



Existing Front Facade @
315 Commonwealth Ave.



Existing Front Facade @
315 Commonwealth Ave.



Existing Front Facade @
315 Commonwealth Ave.



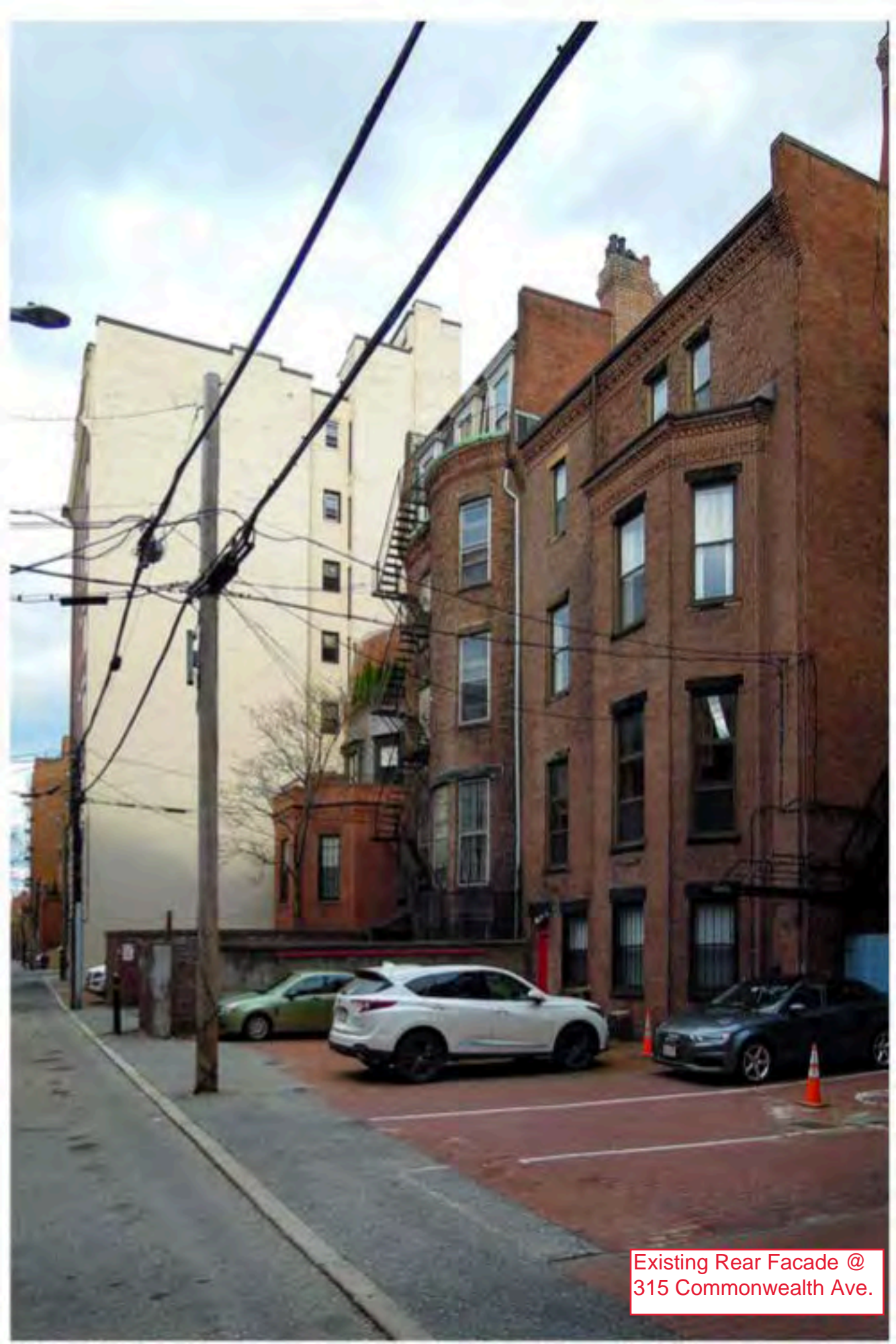
Existing Front Facade Close Up
@ 315 Commonwealth Ave.



Existing Rear Facade @
315 Commonwealth Ave.



Existing Rear Facade @
315 Commonwealth Ave.



Existing Rear Facade @
315 Commonwealth Ave.



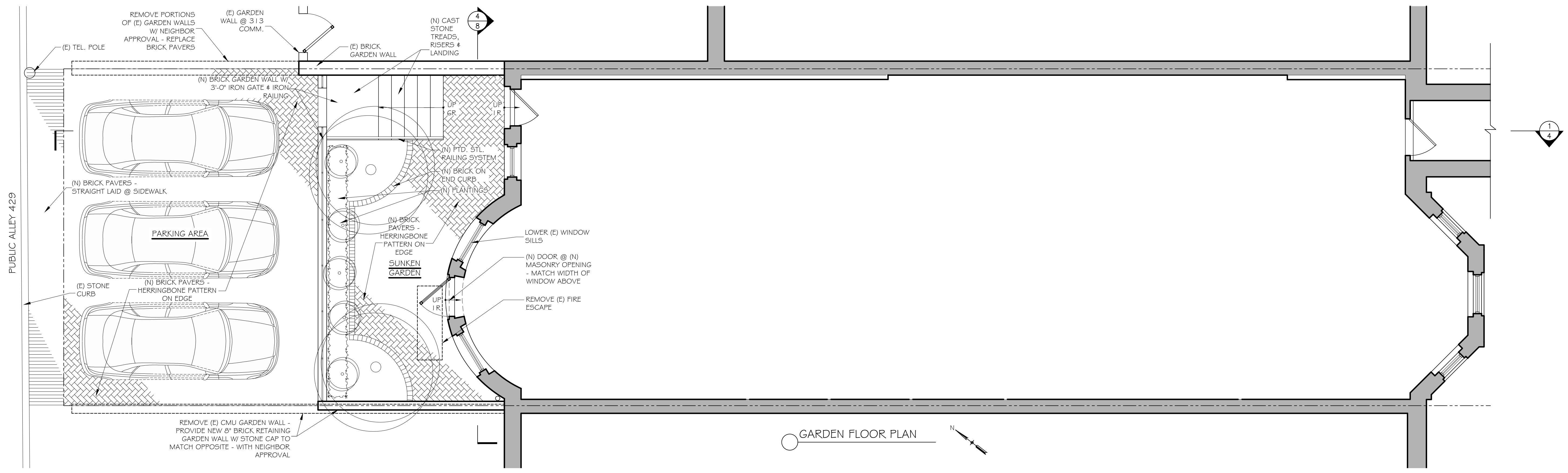
Existing Garden Wall @
313 & 315 Commonwealth
Ave.

Existing Roof @ 315
Commonwealth Ave. looking
North

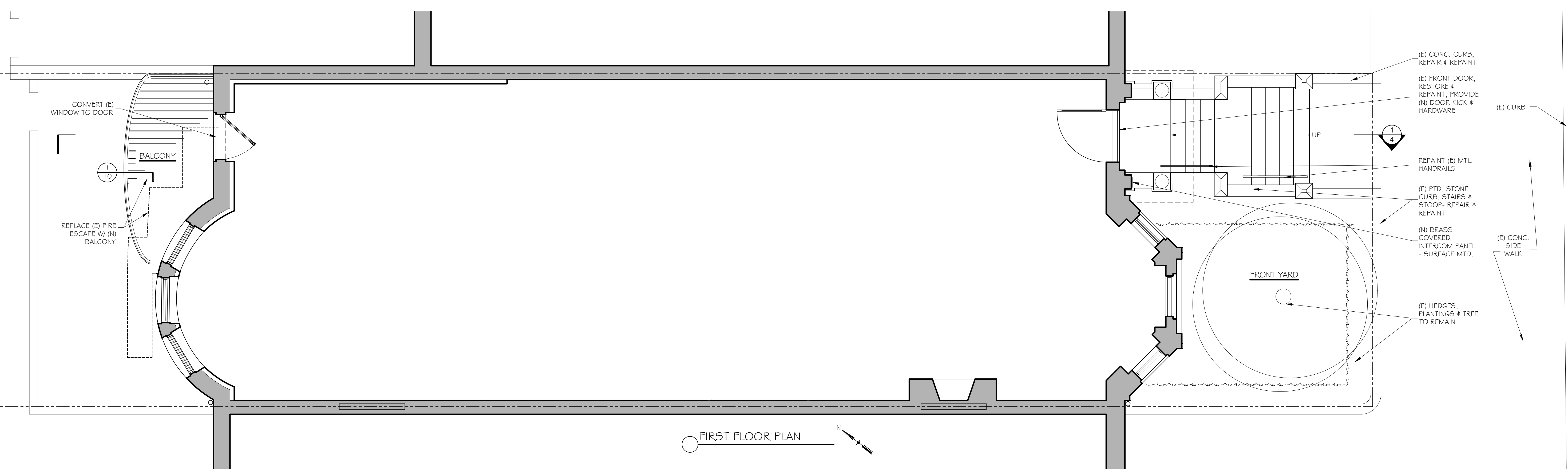
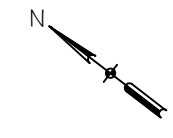




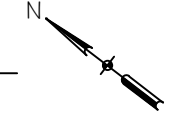
Existing Roof @ 315 Commonwealth Ave. looking South

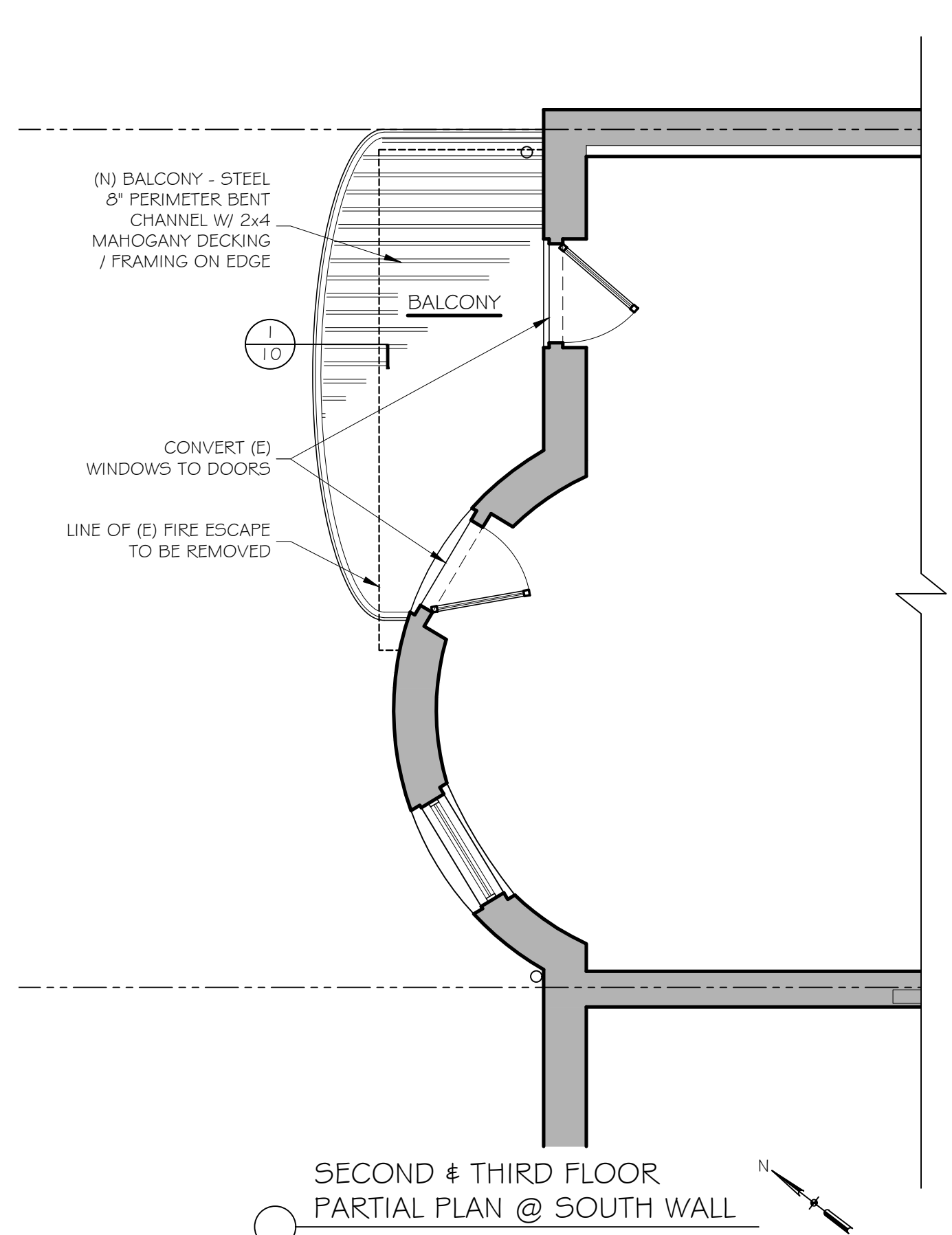


GARDEN FLOOR PLAN

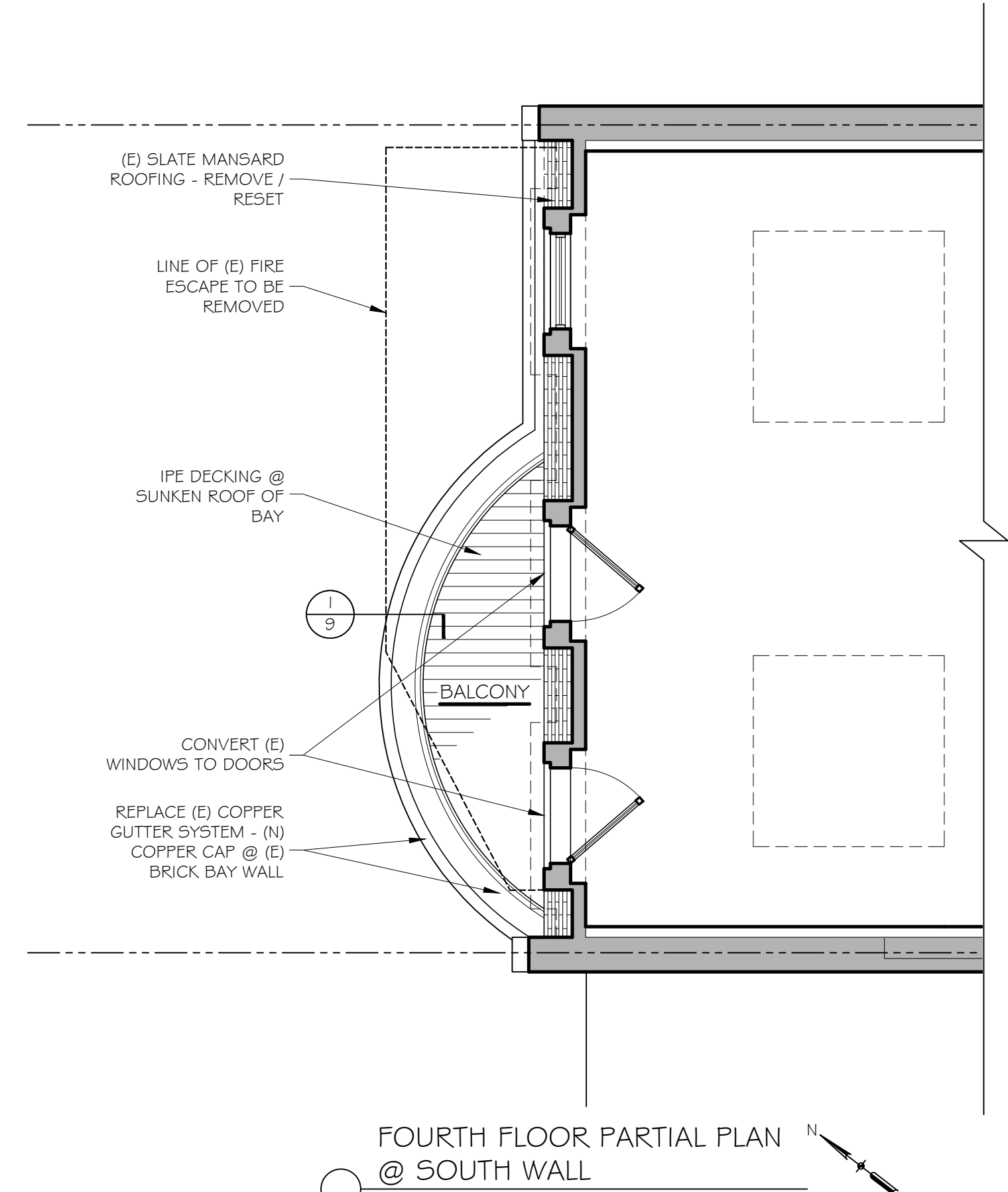


FIRST FLOOR PLAN

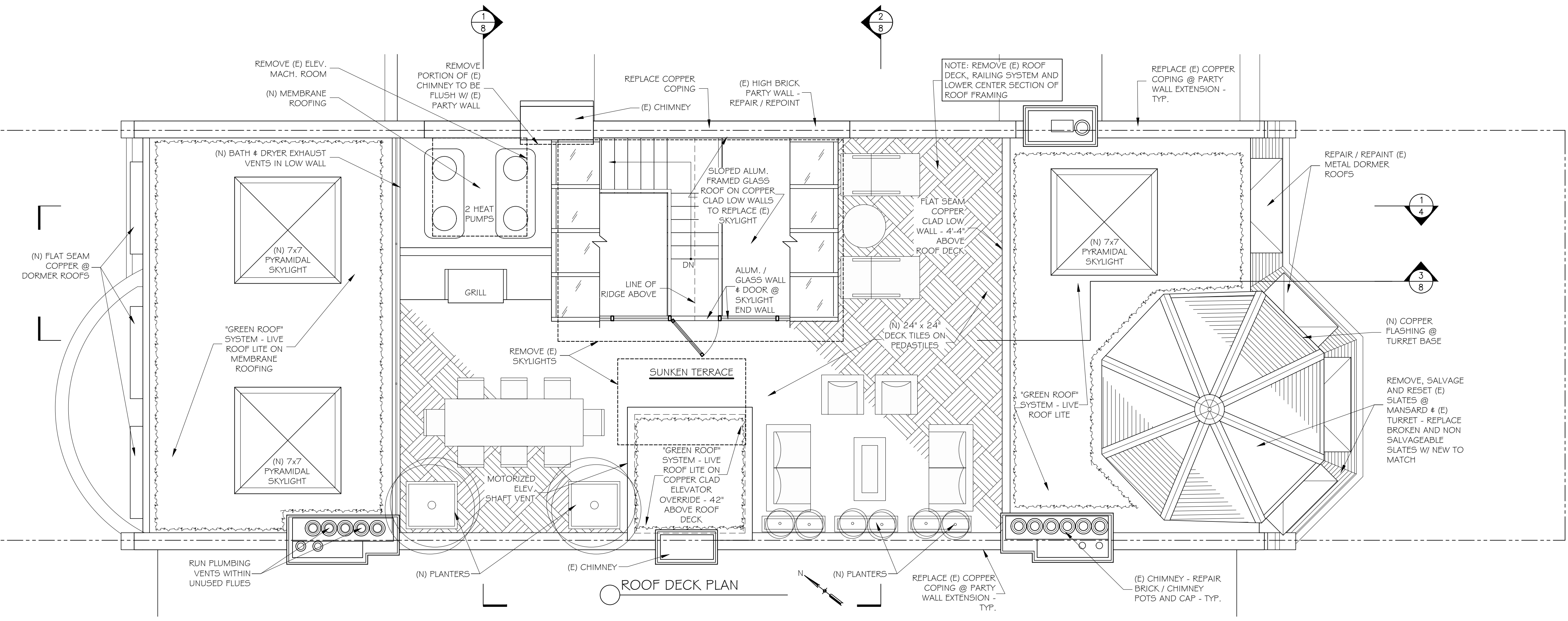




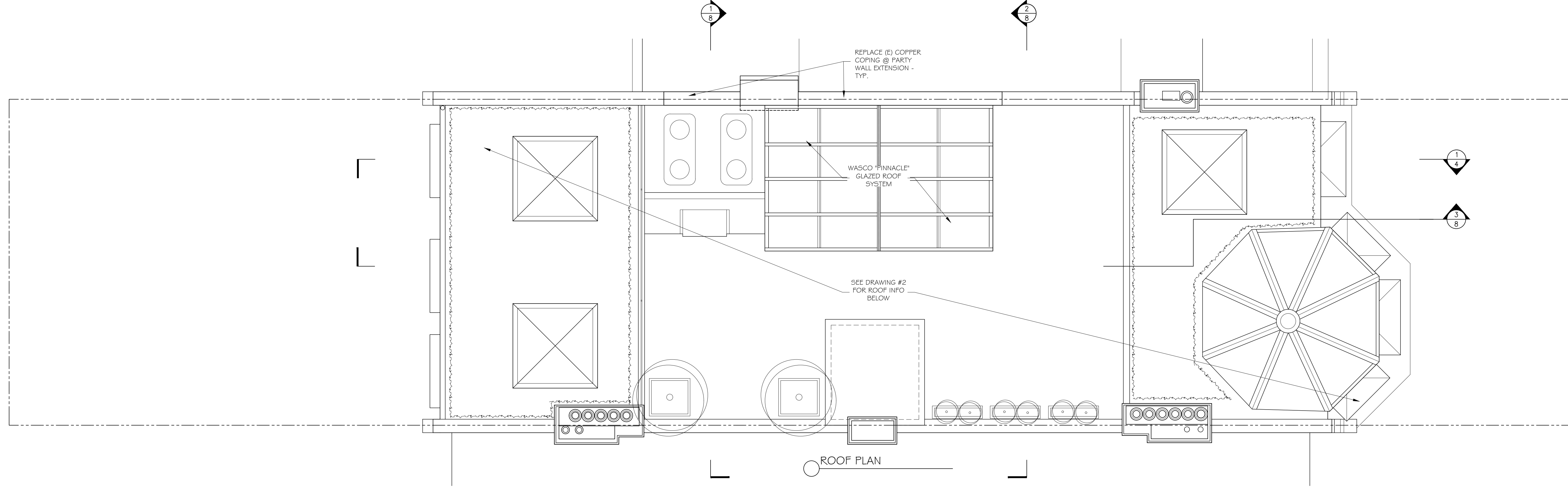
SECOND & THIRD FLOOR
PARTIAL PLAN @ SOUTH WALL



FOURTH FLOOR PARTIAL PLAN
@ SOUTH WALL



ROOF DECK PLAN



ROOF PLAN

JOB NO: 2029
 SCALE: 1/4"=1'-0"
 DATE: 12.21.20

REVISED

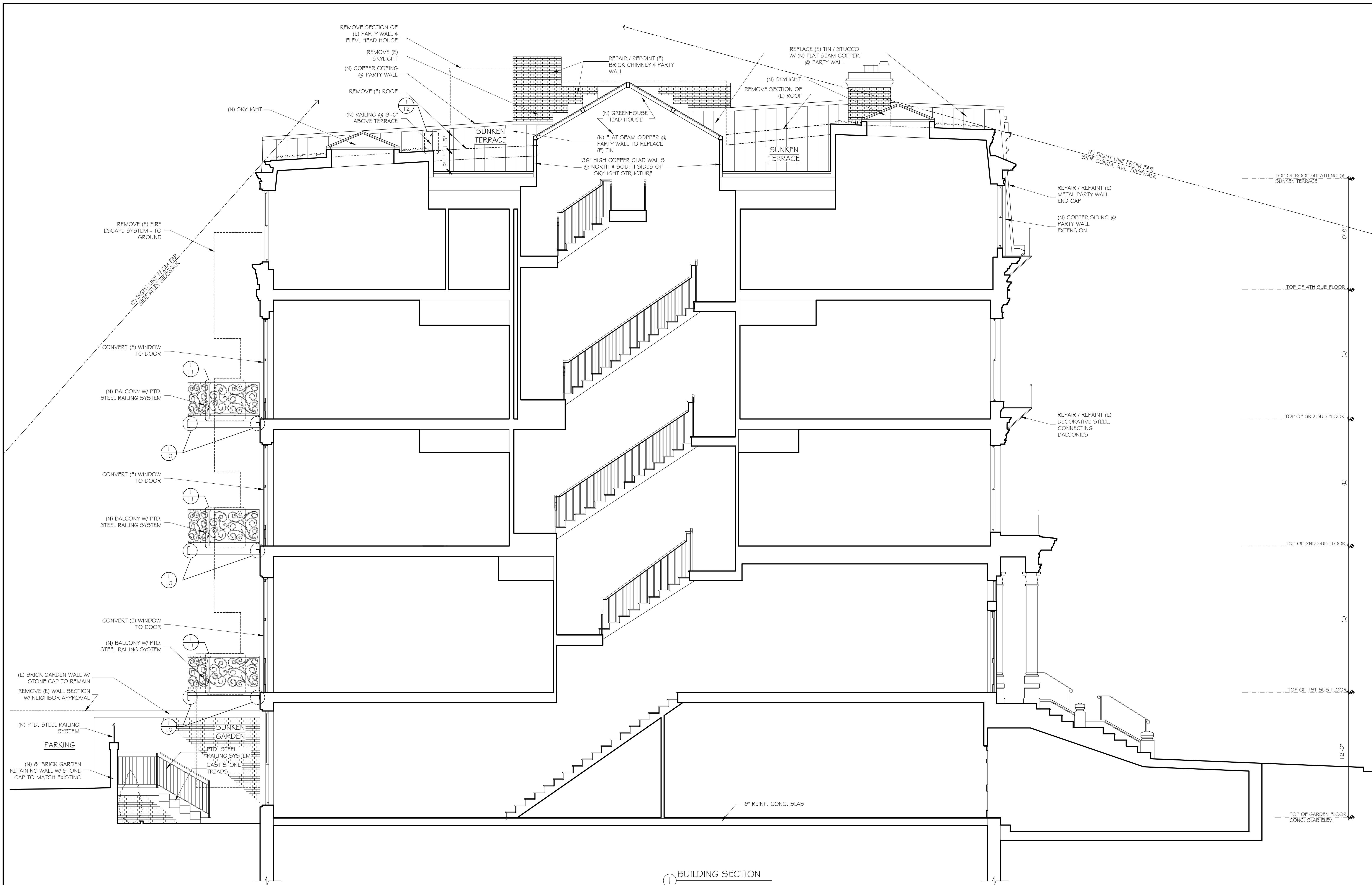
HANEY RESIDENCE
 315 COMMONWEALTH AVE BOSTON, MA 02115

ROOF PLAN

3

46 Waltham Street,
 Suite 3A
 Boston, MA 02118
 Phone 617-956-9992
 Fax 617-956-9893

GD GRASSI DESIGN GROUP
BG BEAUCHEMIN GRASSI INTERIORS



1 BUILDING SECTION

46 Waltham Street,
Suite 3A
Boston, MA 02458
617-956-9992
Fax
917-956-9993

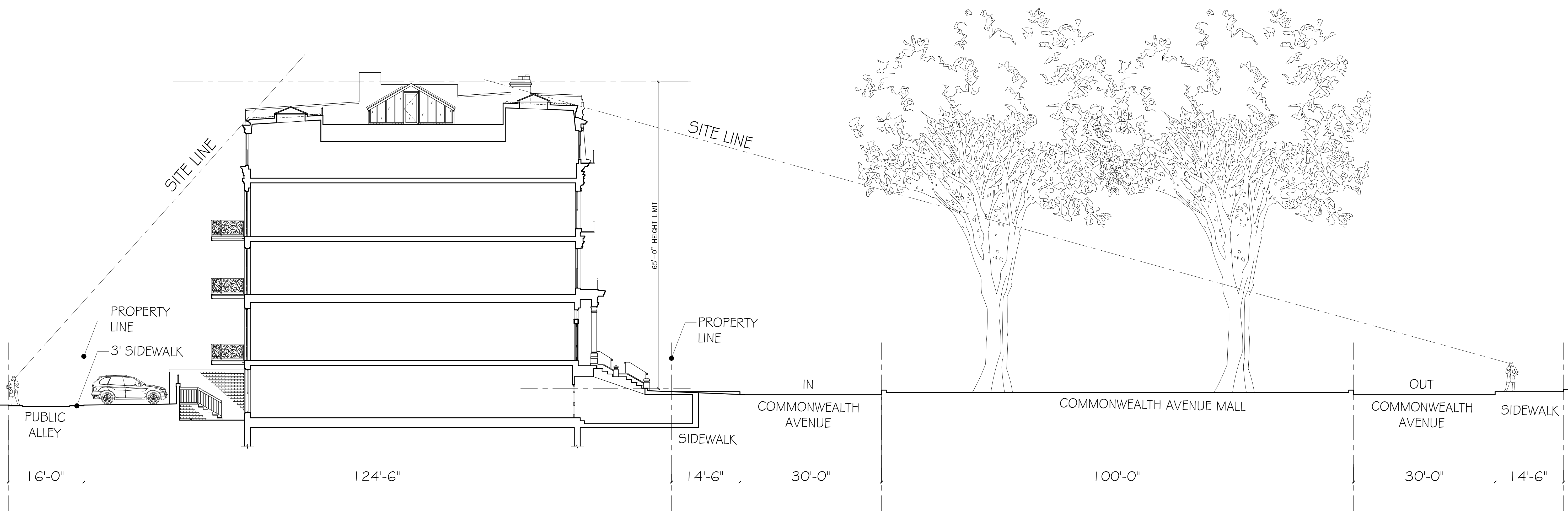
GD GRASSI DESIGN GROUP
BG BEAUCHEMIN GRASSI INTERIORS

JOB NO: 2029
SCALE: 1/4"=1'-0"
DATE: 12.21.20
REVISED

HANEY RESIDENCE
315 COMMONWEALTH AVE BOSTON, MA 02115

BUILDING SECTION

4



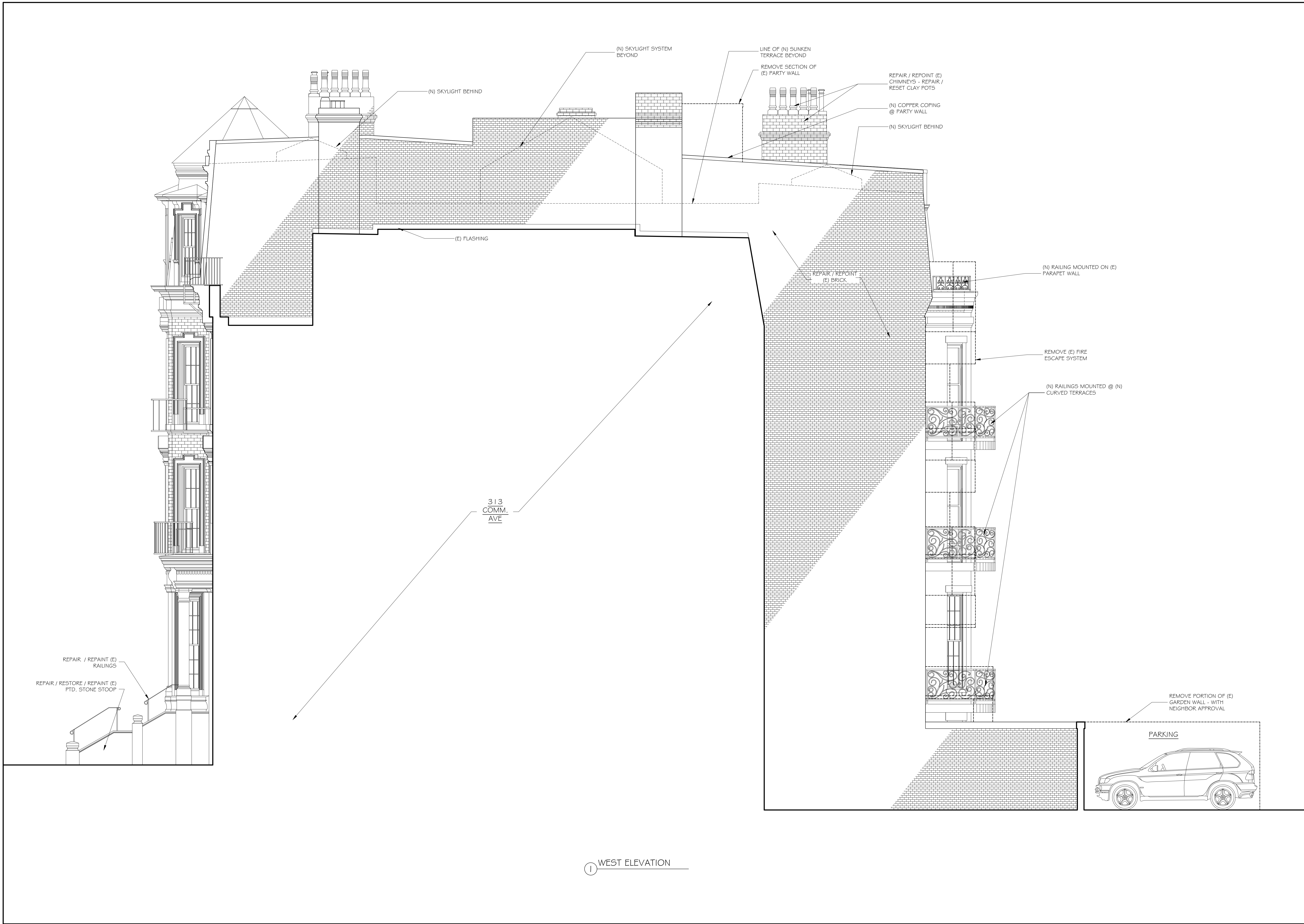
SIGHT LINE SECTION
 SCALE: $\frac{3}{32}" = 1'$



NORTH ELEVATION

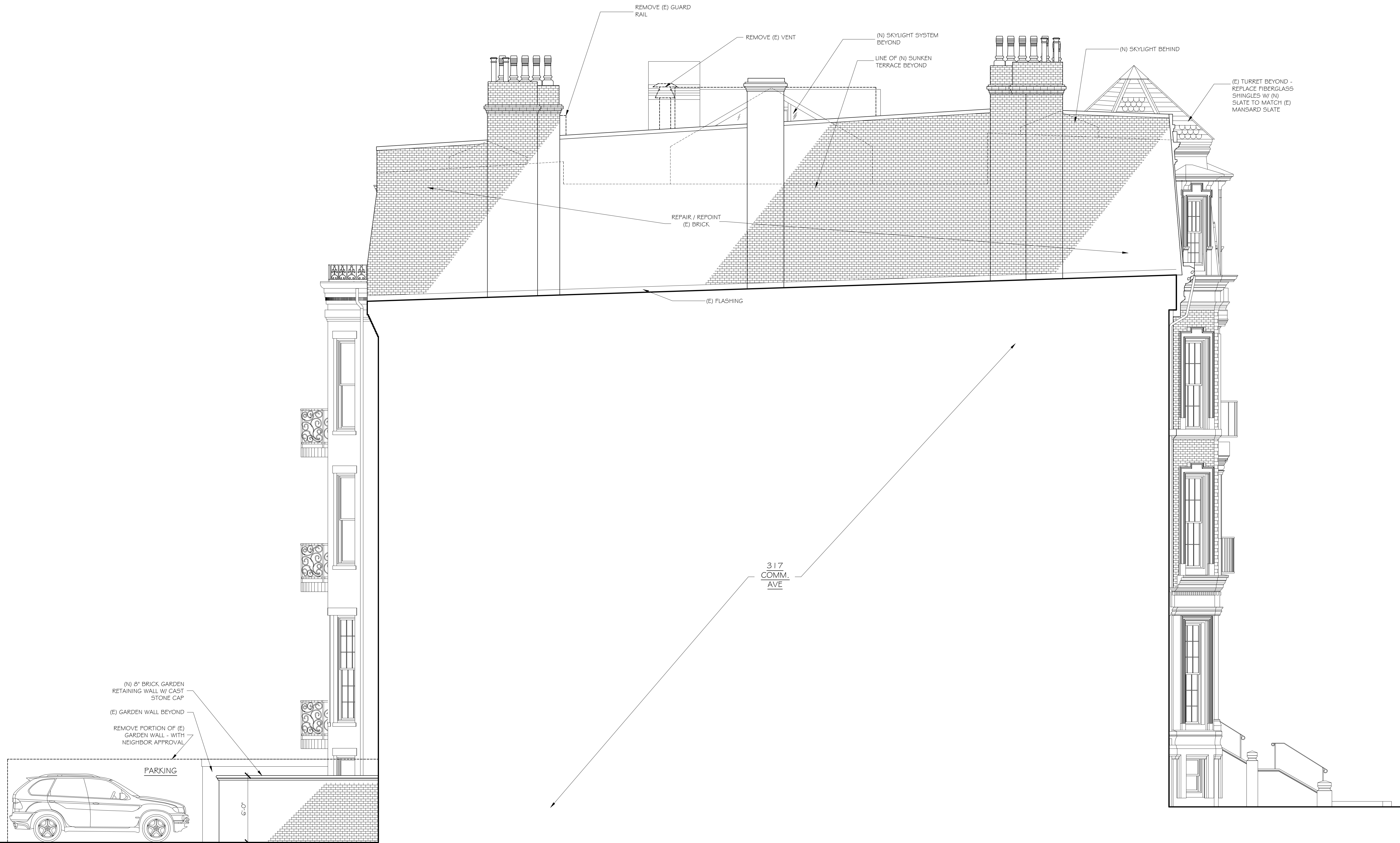


SOUTH ELEVATION



1 WEST ELEVATION

46 Waltham Street, Suite 3A Boston, MA 02458 617-956-9992 Fax 917-956-9993	
GRASSI DESIGN GROUP BEAUCHEMIN GRASSI INTERIORS	
JOB NO: 2029 SCALE: 1/4"=1'-0" DATE: 12.21.20	REVISED
HANEY RESIDENCE 315 COMMONWEALTH AVE BOSTON, MA 02115	
WEST BUILDING ELEVATION	
6	



(N) 8" BRICK GARDEN
RETAINING WALL W/ CAST
STONE CAP

(E) GARDEN WALL BEYOND

REMOVE PORTION OF (E)
GARDEN WALL - WITH
NEIGHBOR APPROVAL

PARKING

6'-0"

REMOVE (E) GUARD
RAIL

REMOVE (E) VENT

(N) SKYLIGHT SYSTEM
BEYOND

LINE OF (N) SUNKEN
TERRACE BEYOND

(N) SKYLIGHT BEHIND

(E) TURRET BEYOND -
REPLACE FIBERGLASS
SHINGLES W/ (N)
SLATE TO MATCH (E)
MANSARD SLATE

REPAIR / REPOINT
(E) BRICK

(E) FLASHING

317
COMM.
AVE

① EAST ELEVATION

46 Waltham Street,
Suite 3A
Boston, MA 02458
617-956-9992
Fax
917-956-9993

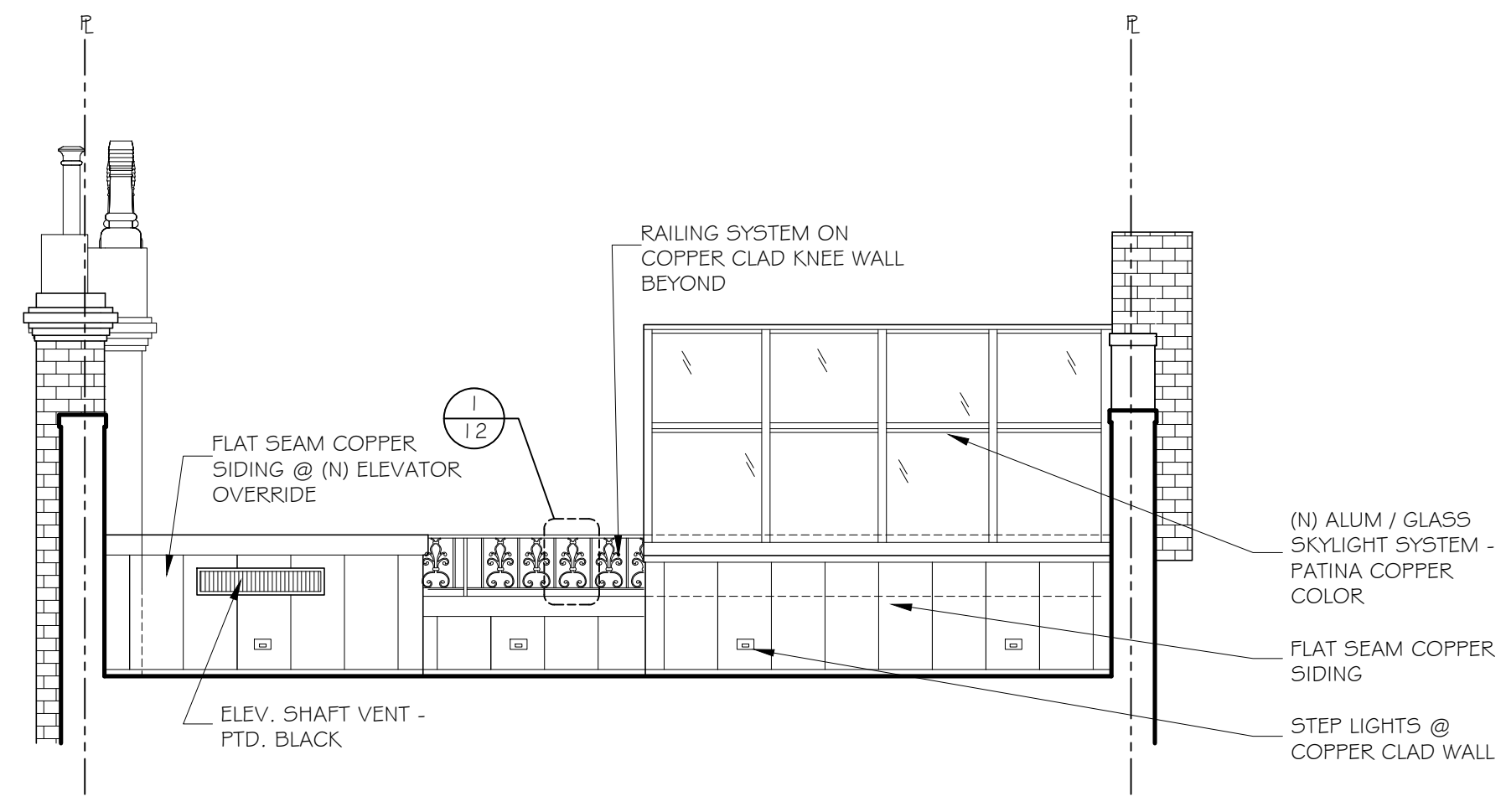
GD GRASSI DESIGN GROUP

BG BEAUCHEMIN GRASSI INTERIORS

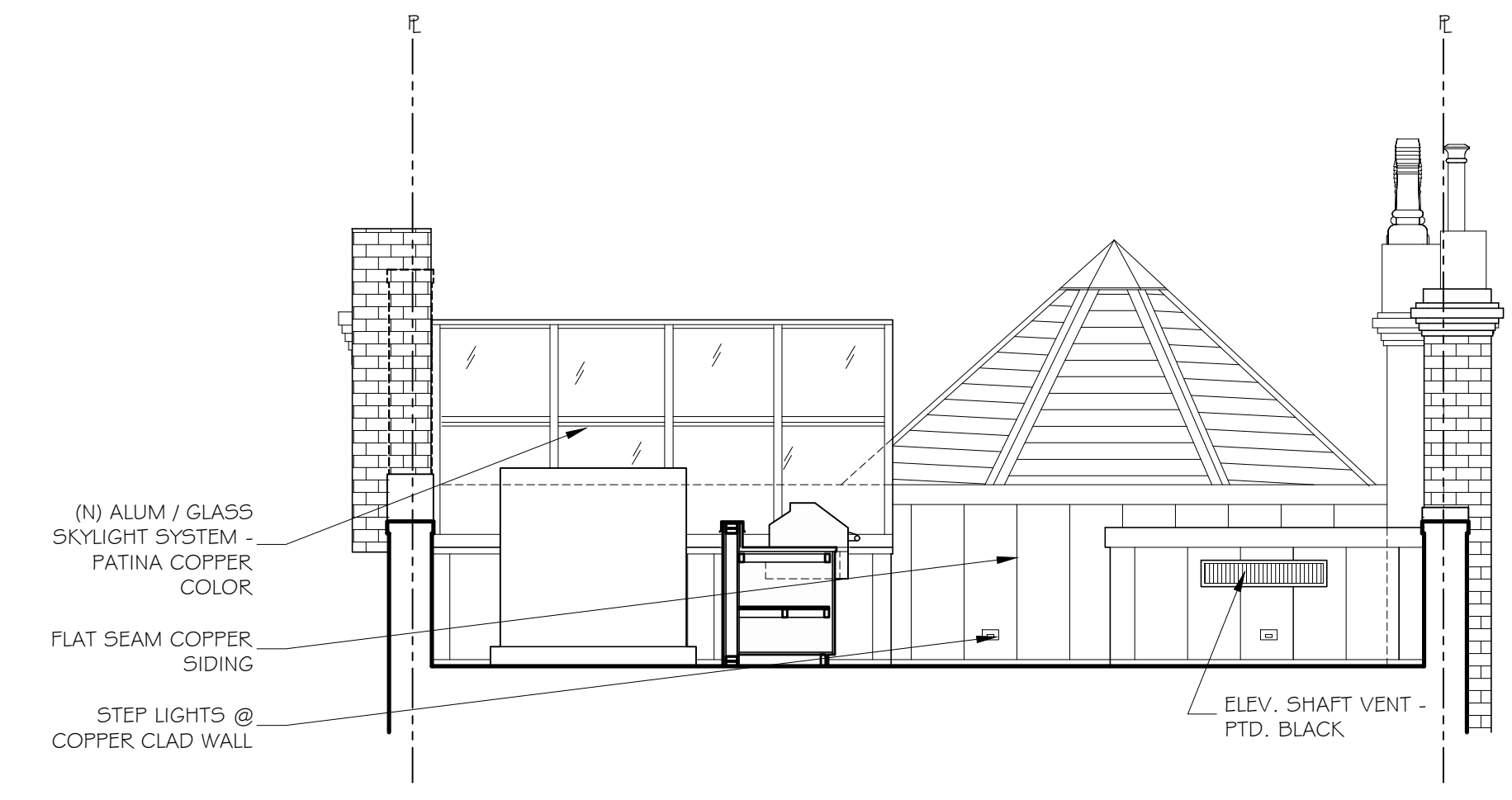
JOB NO: 2029	SCALE: 1/4"=1'-0"
DATE: 12.21.20	REVISED

HANEY RESIDENCE
315 COMMONWEALTH AVE BOSTON, MA 02115

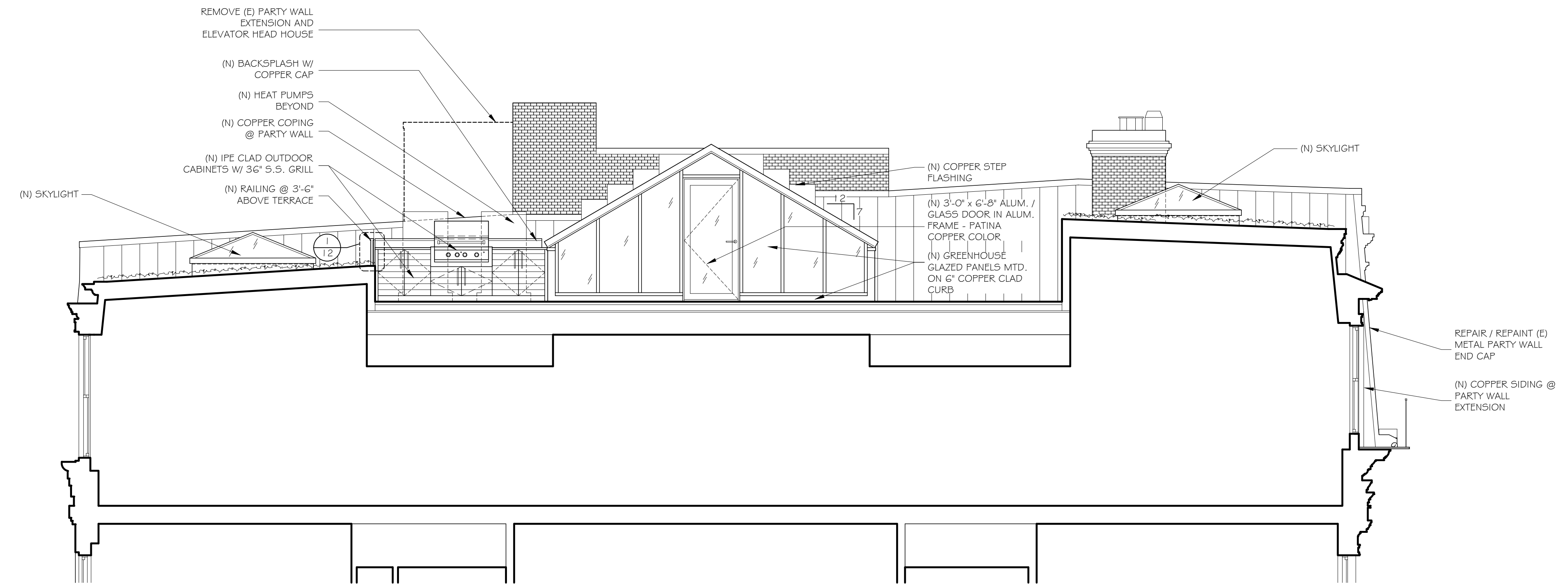
**EAST BUILDING
ELEVATION**



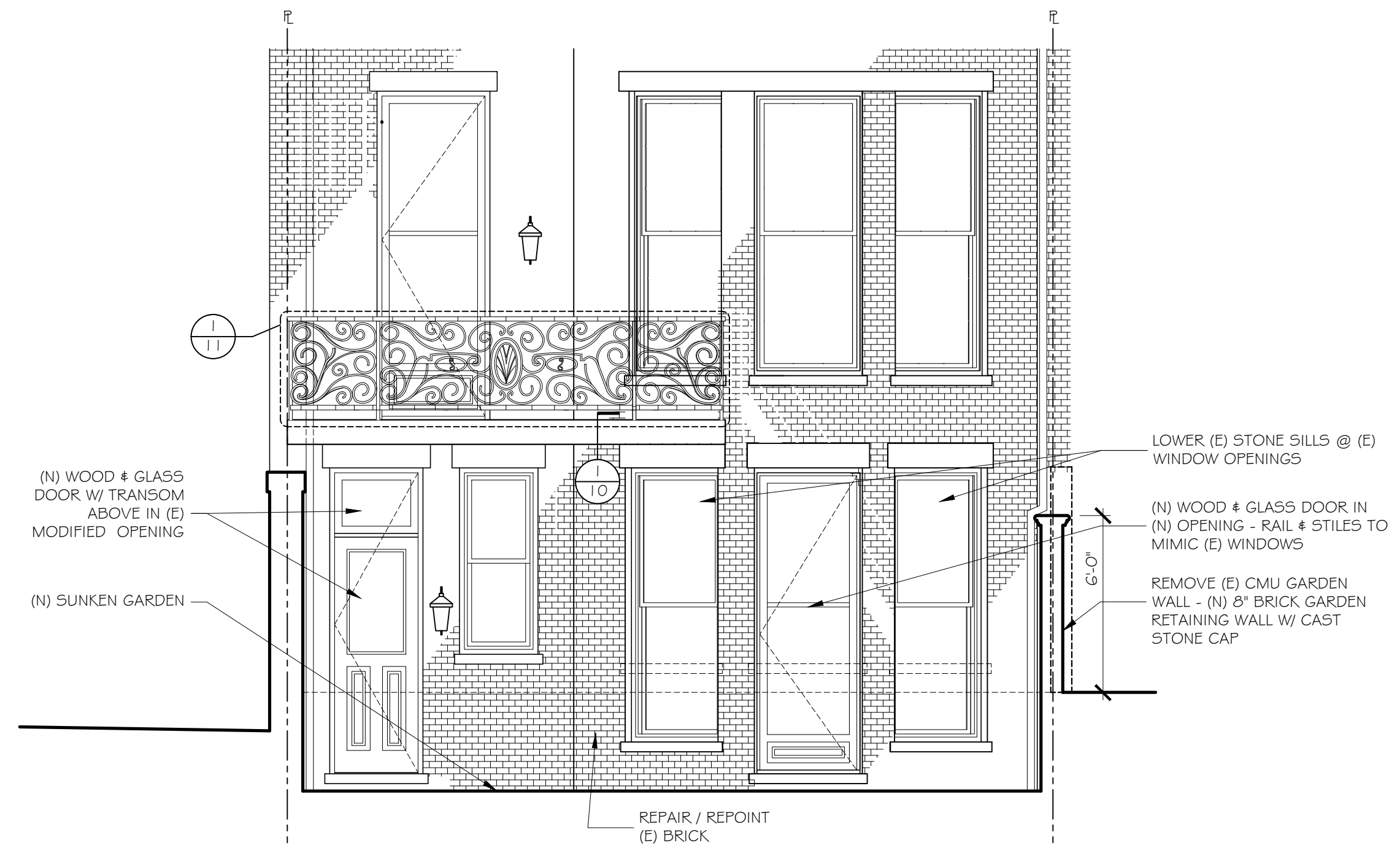
1 ROOF DECK SECTION LOOKING NORTH



2 ROOF DECK SECTION LOOKING SOUTH



3 ROOF DECK SECTION LOOKING EAST



4 NORTH ELEVATION @ SUNKEN GARDEN





Roof Mock up looking South



Roof Mock up looking North



Roof Mock up looking West (New Heat Pumps)



315 Commonwealth from opposite side of Commonwealth



315 Commonwealth from
Eastern end of Commonwealth



315 Commonwealth from
Hereford & Commonwealth



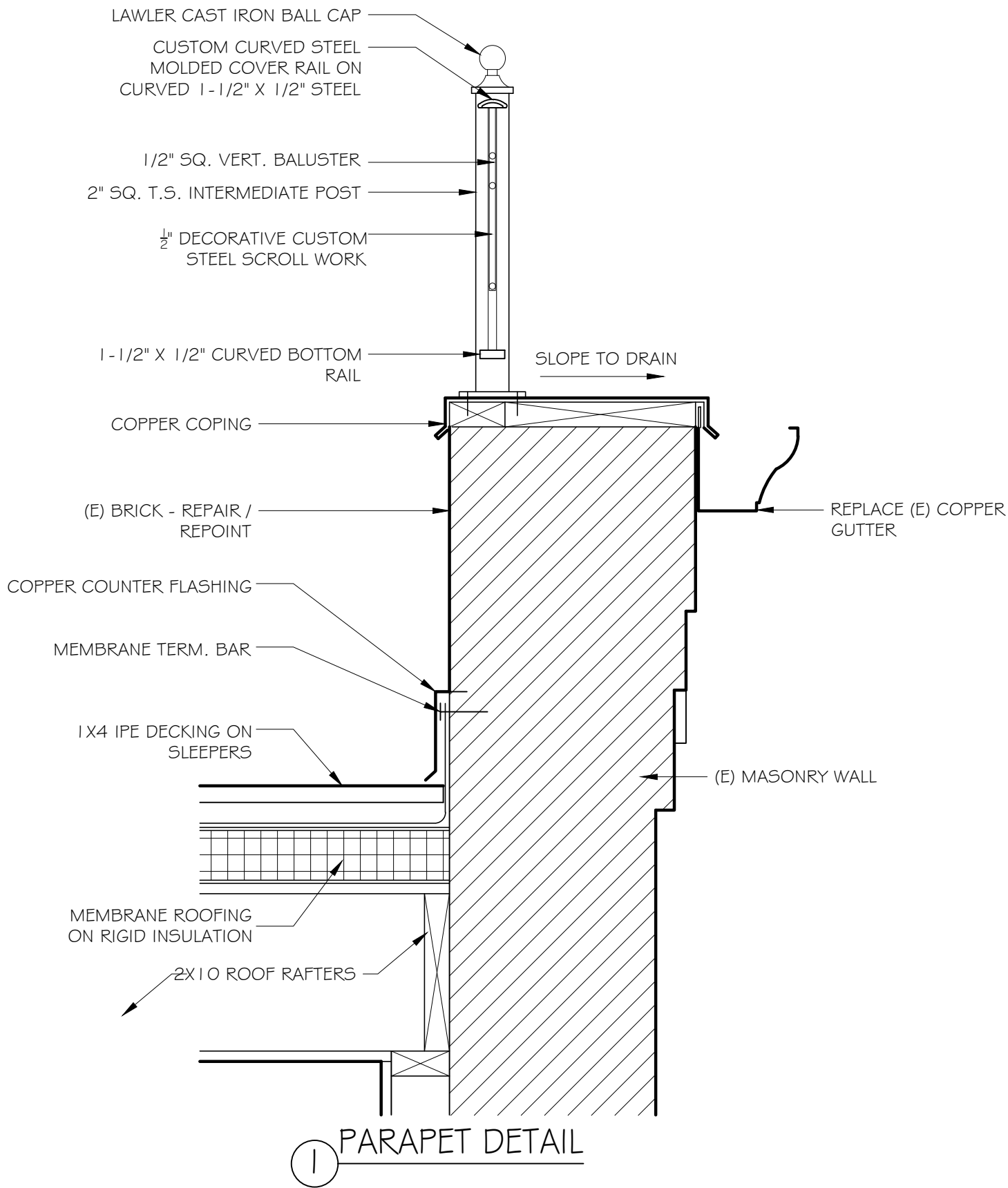
315 Commonwealth from Public Alley



315 Commonwealth from Public Alley looking West



315 Commonwealth from Public Alley looking West



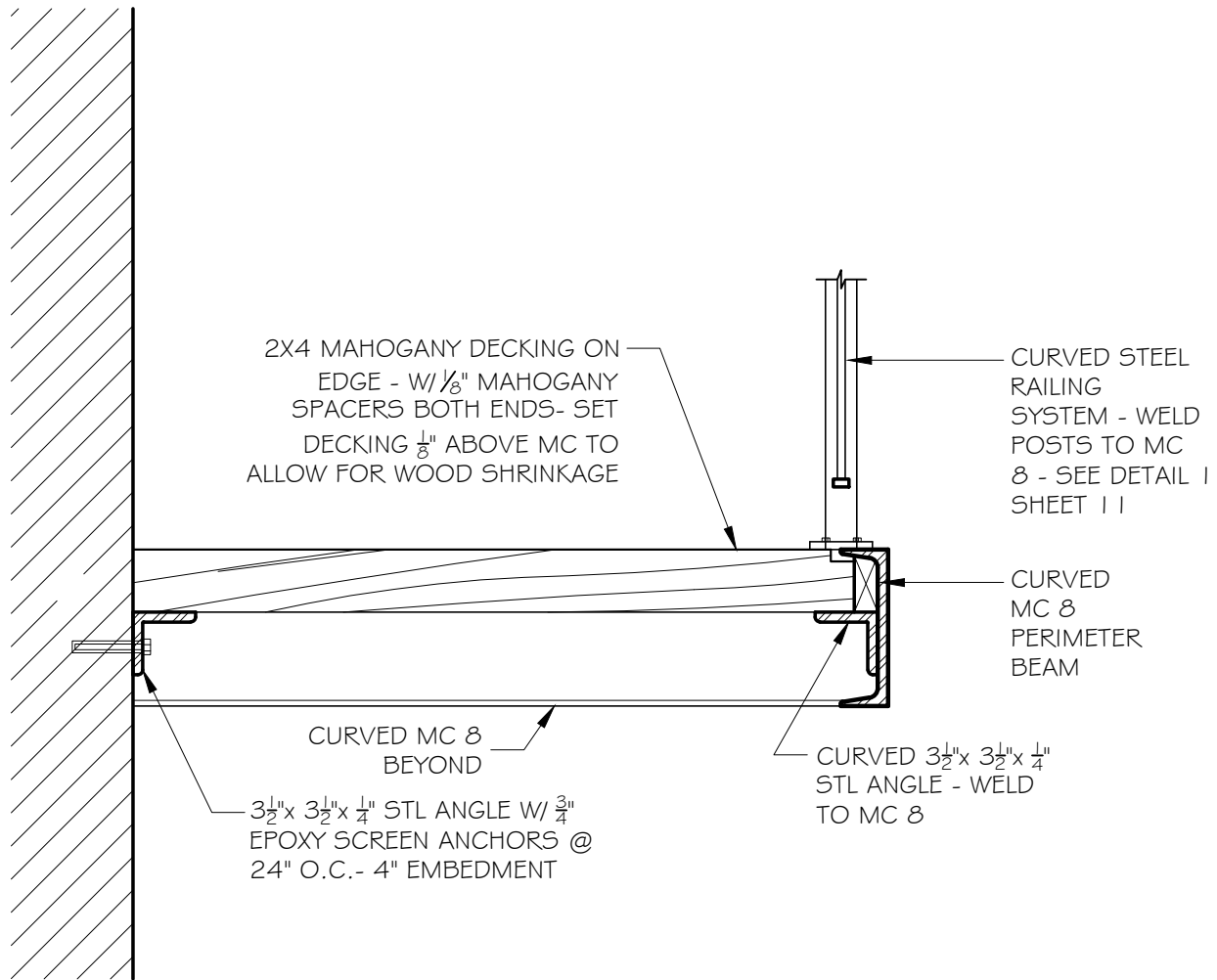
JOB NO: 2029 SCALE: 1-1/2" = 1'-0" DATE: 12.21.2020

PARAPET DETAIL

9

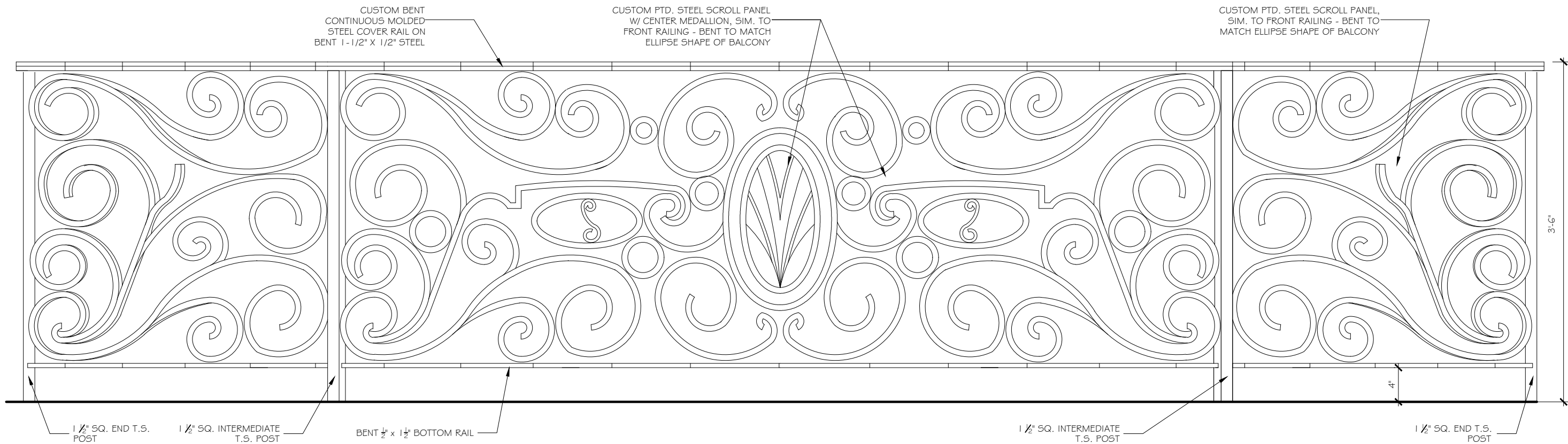
G | D GRASSI DESIGN GROUP 46 Waltham Street, Suite 3A
 Boston, MA 02118
 Phone 617-956-9992
B | G BEAUCHEMIN GRASSI INTERIORS Fax 917-956-9993

315 COMMONWEALTH. AVE
 BOSTON, MA



① BALCONY DETAIL

JOB NO: 2029	SCALE: 1" = 1'-0"	DATE: 12.21.2020	BALCONY DETAIL	10
G D GRASSI DESIGN GROUP 46 Waltham Street, Suite 3A Boston, MA 02118 Phone 617-956-9992 B G BEAUCHEMIN GRASSI INTERIORS Fax 917-956-9993			<u>315 COMMONWEALTH. AVE</u> BOSTON, MA	



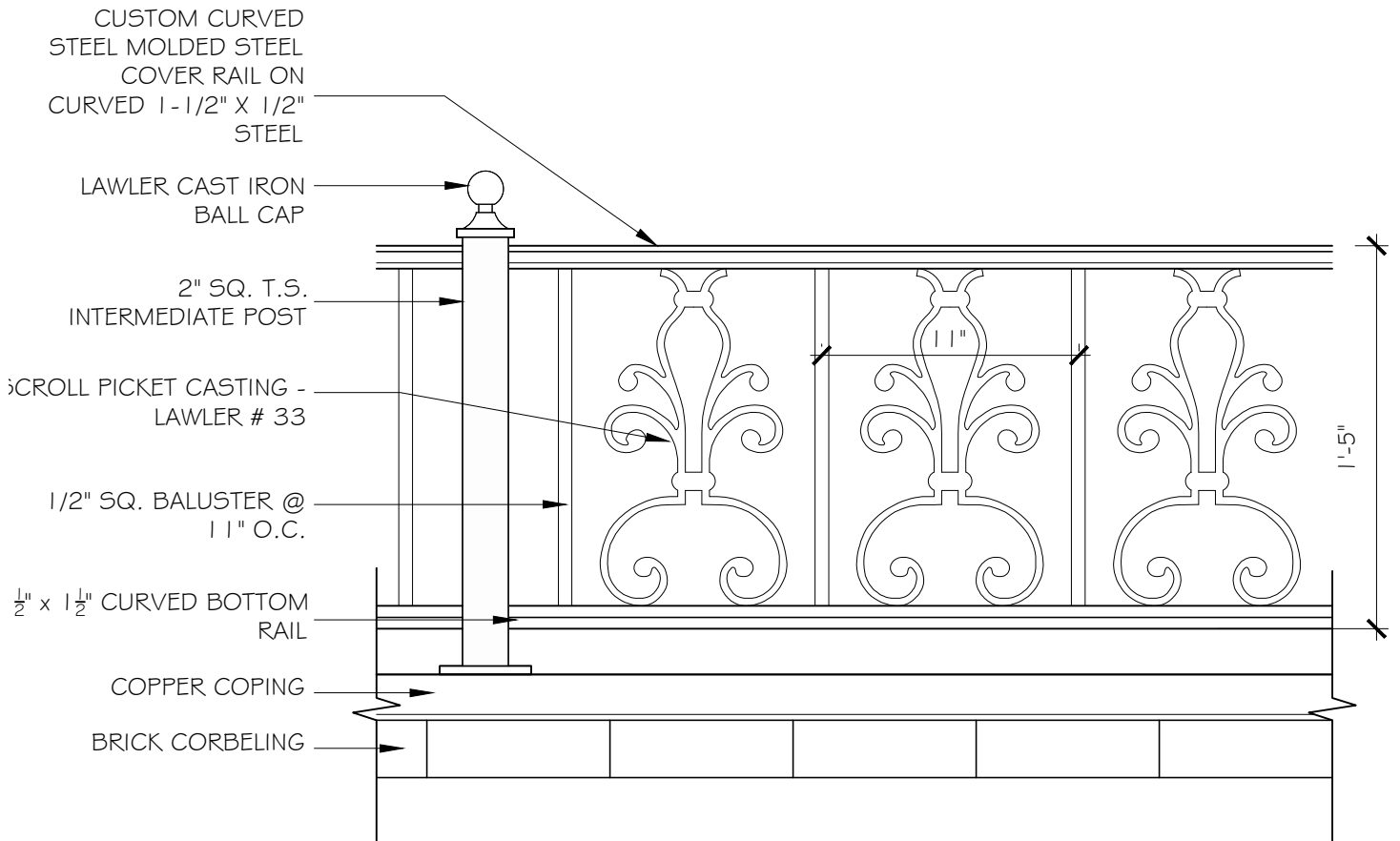
1 BALCONY RAILING DETAIL
 FLATTENED ELEVATION OF ELLIPTICAL RAILING SYSTEM

JOB NO: 2029 SCALE: 1 1/2" = 1'-0" DATE: 12.21.20

BALCONY RAILING DETAIL

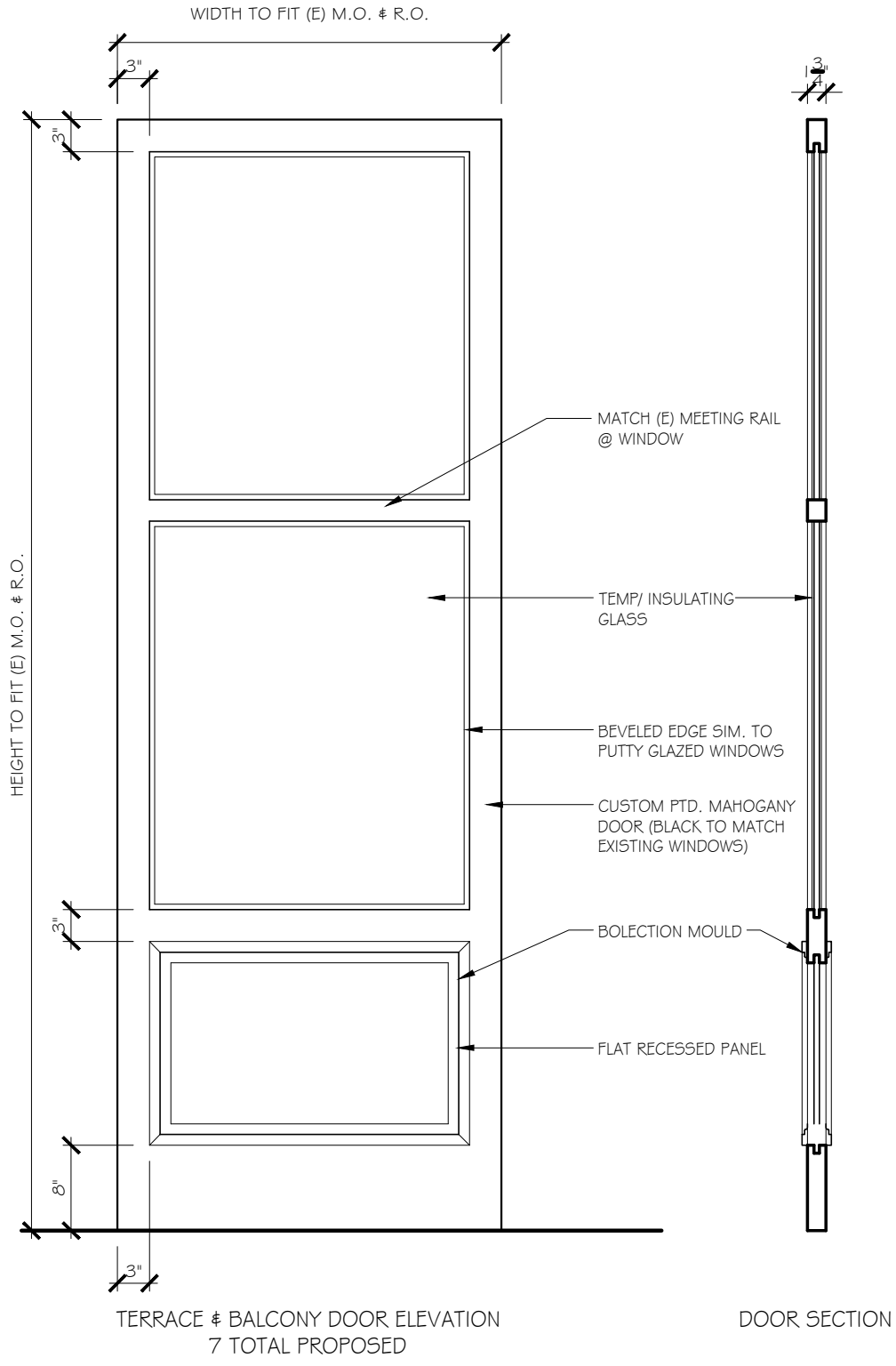
G | D GRASSI DESIGN GROUP 46 Waltham Street, Suite 3A
 Boston, MA 02118
 Phone 617-956-9992
B | G BEAUCHEMIN GRASSI INTERIORS Fax 917-956-9993

315 COMMONWEALTH AVENUE
 BOSTON, MA



① PARAPET RAILING DETAIL

JOB NO: 2029	SCALE: 1" = 1'-0"	DATE: 12.21.2020	PARAPET RAILING DETAIL	12
G D GRASSI DESIGN GROUP 46 Waltham Street, Suite 3A Boston, MA 02118 Phone 617-956-9992 B G BEAUCHEMIN GRASSI INTERIORS Fax 917-956-9993			<u>315 COMMONWEALTH. AVE</u> BOSTON, MA	



JOB NO: 2029

SCALE:
3/4" = 1'-0"

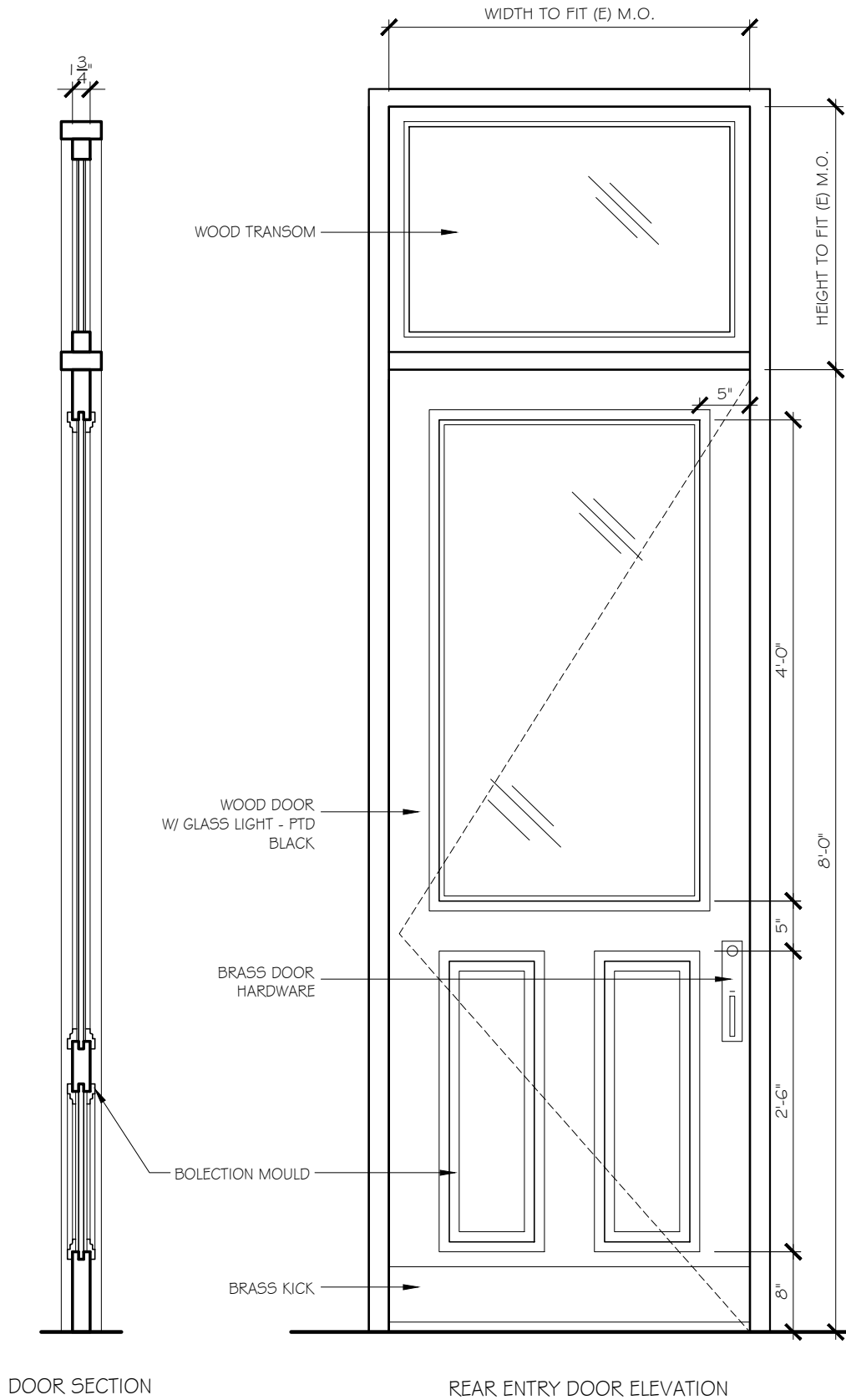
DATE: 12.21.2020

TERRACE & BALCONY DOOR ELEVATION
& SECTION

GID GRASSI DESIGN GROUP 46 Waltham Street, Suite 3A
Boston, MA 02118
Phone 617-956-9992
BG BEAUCHEMIN GRASSI INTERIORS Fax 917-956-9993

315 COMMONWEALTH. AVE
BOSTON, MA

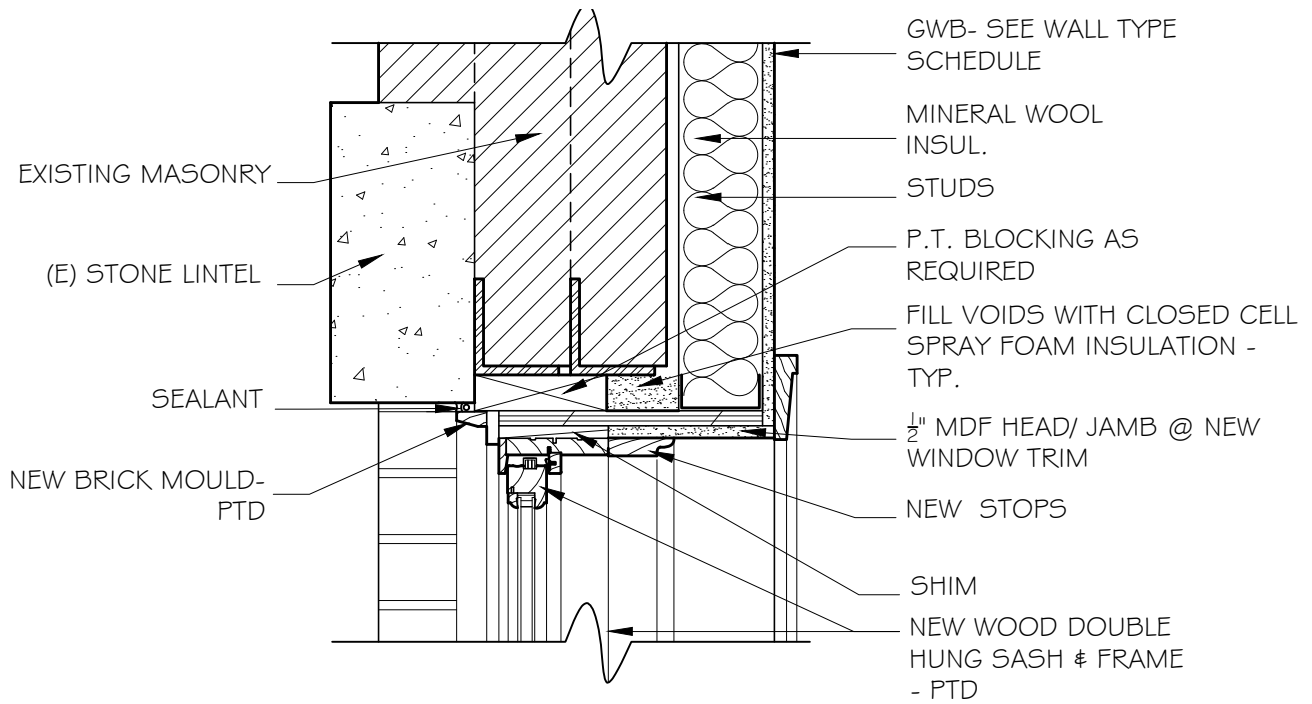
13



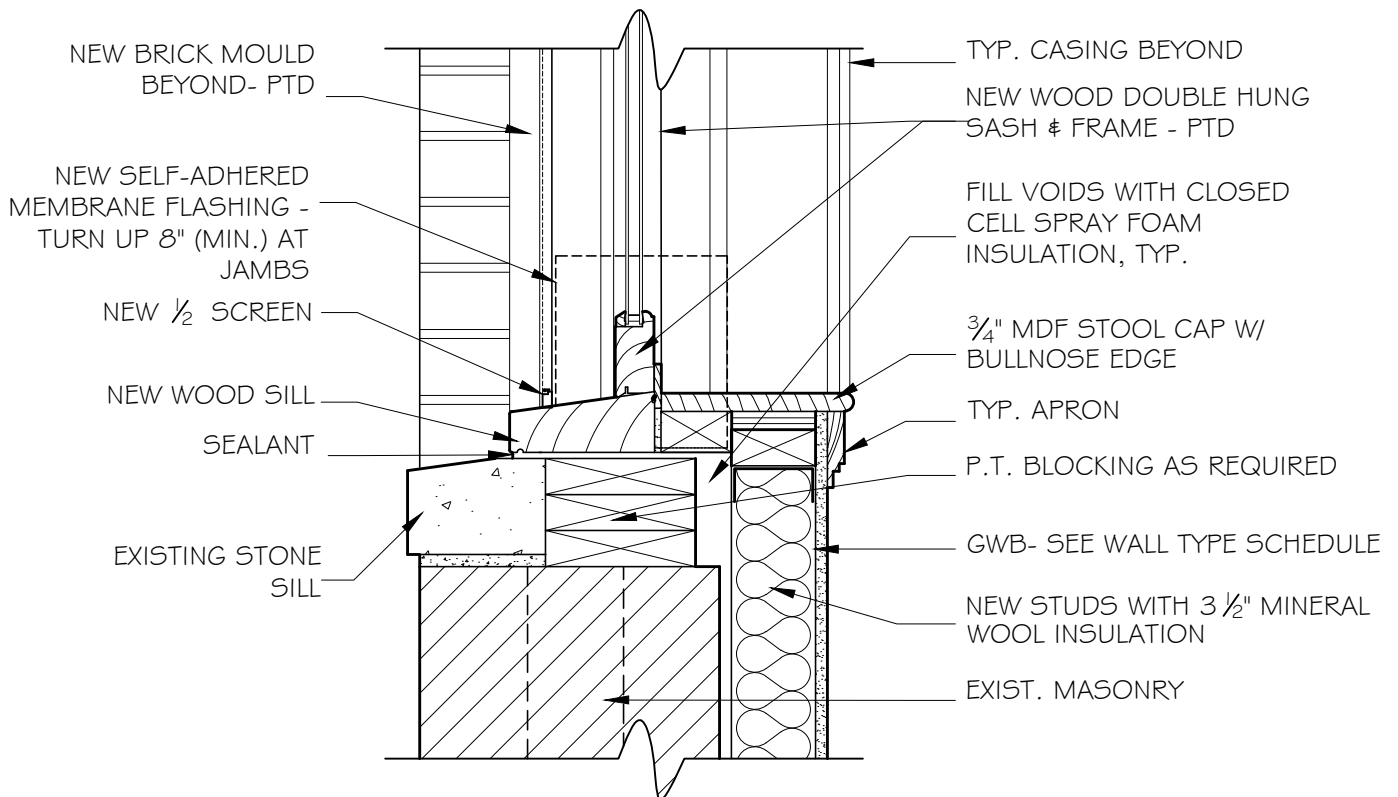
JOB NO: 2029	SCALE: 3/4" = 1'-0"	DATE: 12.21.2020	REAR ENTRY DOOR ELEVATION & SECTION
--------------	------------------------	------------------	-------------------------------------

GID GRASSI DESIGN GROUP 46 Waltham Street, Suite 3A
Boston, MA 02118
Phone 617-956-9992
BG BEAUCHEMIN GRASSI INTERIORS Fax 917-956-9993

315 COMMONWEALTH. AVE
BOSTON, MA



① TYP. WINDOW HEAD DETAIL IN MASONRY OPNG (JAMB SIMILAR) 1 1/2" = 1'-0"



② TYP. WINDOW SILL DTL. IN MASONRY OPENING 1 1/2" = 1'-0"

JOB NO: 2029	SCALE: 3/4" = 1'-0"	DATE: 12.21.2020	TYP. WINDOW HEAD & SILL DETAILS	15
G D GRASSI DESIGN GROUP 46 Waltham Street, Suite 3A Boston, MA 02118 Phone 617-956-9992 B G BEAUCHEMIN GRASSI INTERIORS Fax 917-956-9993			<u>315 COMMONWEALTH. AVE</u> BOSTON, MA	

Model: PURY-P144TKMU-A (-BS) – DIMENSIONS

Unit: mm(in.)

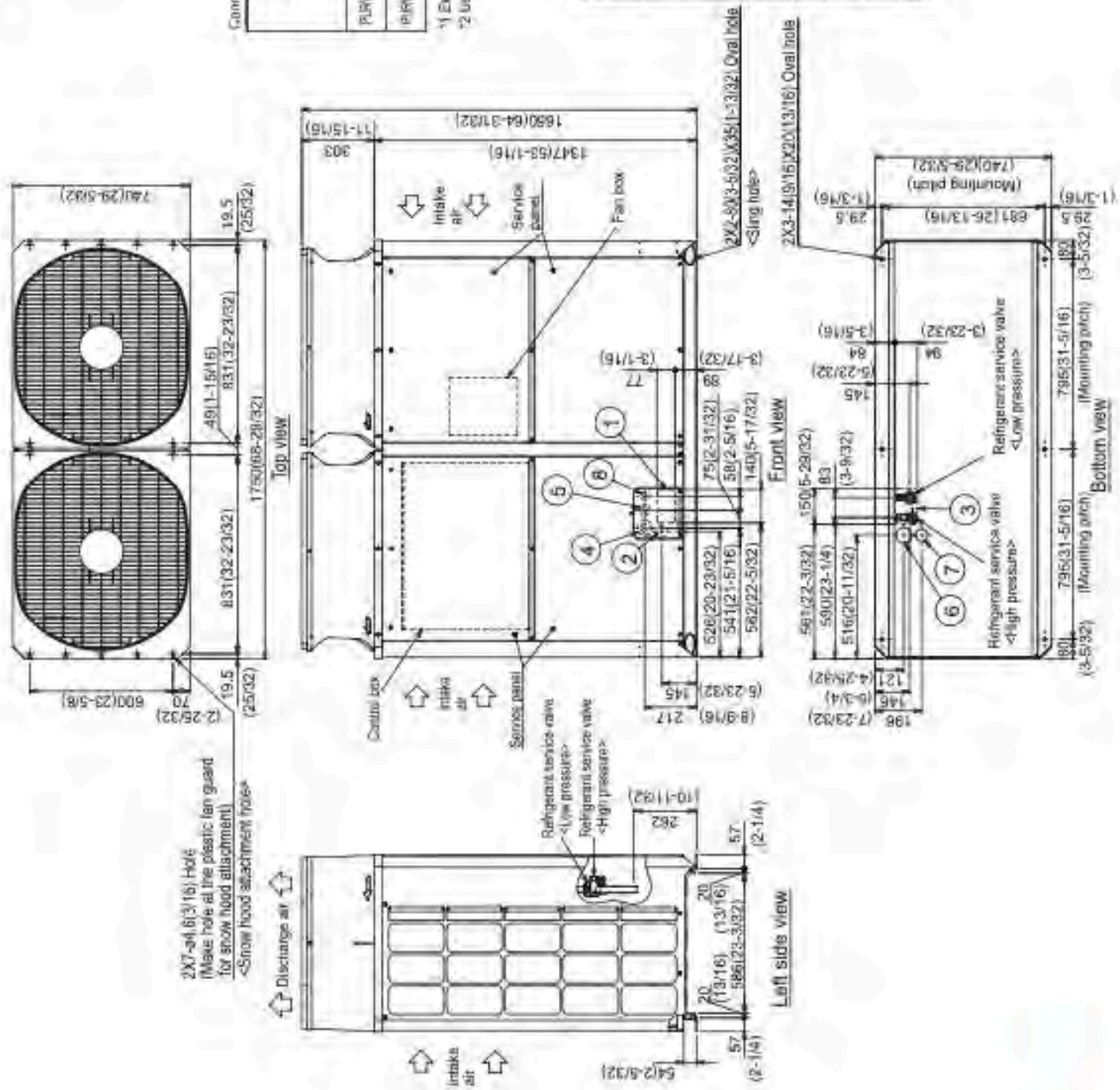
Note 1 Please refer to the engineering manual for information regarding necessary spacing around the unit and foundation work. Outdoor unit must be mounted at least 12" off the ground or 12" above the highest average snow depth, whichever is greater.
 2 At freezing of pipes, wrap the refrigerant service valve with wet cloth and keep the temperature of refrigerant service valve under (30°C/248°F).

Connecting pipe specifications

Model	Diameter			
	High pressure	Low pressure	High pressure	Low pressure
PURY-P120TKMU	φ19.05 Braze (3/4) *2	φ28.58 Braze (1-1/8) *1	φ25.4 (1)	φ28.58 (1-1/8)
PURY-P144TKMU	φ22.2 Braze (7/8) *2	φ28.58 Braze (1-1/8) *1	φ25.4 (1)	φ28.58 (1-1/8)

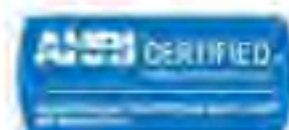
*1 Expand the outdoor piping and connect to the refrigerant service valve piping.
 *2 Use the pipe (on field supply) and connect to the refrigerant service valve piping.

NO	Usage	Specifications
①	Front through hole	140 x 77 Knockout hole (5-1/2)(3-1/16)
②	Front through hole (Uses when wiring of optional parts is installed)	φ45 Knockout hole (1-25/32)
③	Bottom through hole	150 x 84 Knockout hole (5-29/32)(3-23/32)
④	Front through hole	φ62.7 or φ34.5 Knockout hole (2-15/32)(1-3/8)
⑤	Front through hole	φ43.7 or φ22.2 Knockout hole (1-3/4)(7/8)
⑥	Bottom through hole	φ65 Knockout hole (2-9/16)
⑦	Bottom through hole	φ62 Knockout hole (2-1/16)
⑧	Front through hole	φ34 Knockout hole (1-11/32)



COOLING & HEATING

1340 Satellite Boulevard, Suwanee, GA 30024
 Toll Free: 800-433-4822 www.mehvac.com



Heat Pumps

FREE SHIPPING on Most Orders*

[OPEN BOX](#) [STORES](#) [SIGN IN](#) [CONTACT US](#)


LP LUXURY LIGHTING

Search


[Home](#) / [Wac Led](#) / WAC LEDme 5"W Black Horizontal 3000K LED Step And Wall Light - Style # 41K67

Deck Lighting

WAC LEDme 5"W Black Horizontal 3000K LED Step and Wall Light

\$83.95

FREE SHIPPING* | [Low Price Guarantee](#)
IN STOCK - [Ships in 3 to 5 Days](#)


1

ADD TO CART

SAVE

[BUILD FULL SYSTEM](#)


DESIGN CHAT

PRODUCT DETAILS

Let the light show the way with LEDme's horizontal LED step and wall light.

Additional Info:

Energy-efficient with simple styling, this LED step and wall light is perfect illumination for gathering outdoors. Measuring five inches across, this rectangular light can be easily mounted almost anywhere. Black finish over factory-sealed K-alloy aluminum construction is able to withstand a wet environment and maintain its subtle good looks. Built-in dimmable 2 watt LED module radiates a pure 3000K color temperature comparable to a 15 watt incandescent.

WAC LIGHTING
Responsible Lighting*


[Shop all WAC](#)

- 5" wide x 3" high x 1 1/2" deep. Weighs 0.78 lbs.
- Built-in dimmable 2 watt LED. 68 lumens, comparable to a 15 watt incandescent. 3000K. 90 CRI. 50-degree beam spread.
- High powered LED. Input: 9-15V AC. Power: 2W (3VA). Low voltage - 12V. LED averages 60,000 hours at 3 hours per day.
- Horizontal step and wall light from the LEDme collection by WAC Lighting.
- Factory sealed water tight and IP66 rated for protection against high-pressure water jets and outdoor elements.

SPECIFICATIONS**Certifications/Qualifications**www.kichler.com/warranty**Dimensions**

Base Backplate	5.75 X 9.50
Extension	10.75"
Weight	5.70 LBS
Height from center of Wall opening (Spec Sheet)	6.75"
Height	19.50"
Width	8.00"

Light Source

Lamp Included	Not Included
Lamp Type	A19
Light Source	Incandescent
Max or Nominal Watt	100W
# of Bulbs/LED Modules	1
Socket Type	Medium
Socket Wire	150

Mounting/Installation

Interior/Exterior	Exterior
Location Rating	CSA UL Listed Wet
Mounting Weight	3.15 LBS

FIXTURE ATTRIBUTES**Housing**

Diffuser Description	White Linen
Primary Material	ALUMINUM

Product/Ordering Information

SKU	9040BK
Finish	Black
Style	Traditional
UPC	783927226769

Finish Options

Black



Rubbed Bronze

**ALSO IN THIS FAMILY**

Product Information

Item No.: 7-X
1" Sq. Finial

Dimensions:
Height: 2.25 in.
1" ball Plug 1" x 3/4" deep

Weight:
0.31 lb.



[<< Back to Search](#)

HOME > ESTATE DOOR HARDWARE > ENTRANCE > TREMONT ENTRANCE TRIM-031



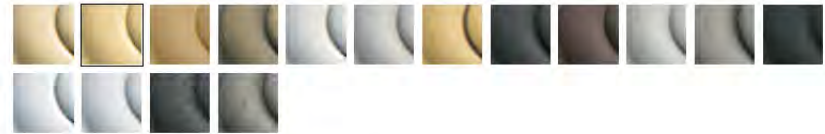
TREMONT ENTRANCE TRIM

Model #: 6542.031

★★★★★ 5.0 (3) [Write a review](#) [Ask a question](#)

AVAILABLE FINISHES:

SELECTED: NON-LACQUERED BRASS



WHERE TO BUY

ADD TO WISH LIST

CLICK IMAGE TO ZOOM

ENLARGE IMAGE

PRODUCT HIGHLIGHTS

- Tremont Entrance Trim, shown with 5020 Knob
- Solid forged brass

Rear Exterior Door Hardware



V1996 Kickplates

V-PAC

8" x 34", Brass

Stock # N244-079

Finish:



Selected: Brass

Size:

6" x 30"

8" x 34"

*Not all sizes are available in all finishes.

+ ADD TO PROJECT LIST

WHERE TO BUY »

Product Overview

- Plate is easy to install
- Plastic cover protects finish during installation
- Includes fasteners
- Aluminum material
- Anodized surface for extra durability

Home Designs

A variety of knobs, pulls, cabinet catches and hinges designed to add the final detail to any kitchen or bathroom.



Package Specifications

V-PAC	
Stock #	N244-079
Catalog #	V1996
Material	Aluminum
UPC	038613244078
Quantity Per Package	1
Quantity Per Box	2 PK

Rear Entry Door Kick Plate

AX-DV, AX-DVF

Video Door Stations for AX Series



DESCRIPTION:

The AX-DV is a surface mount color video door station for the AX Series. The AX-DVF is a flush mount color video door station. Both units wire directly to the AX Central Exchange Unit using CAT-5e wire with an RJ45 jack for connection.

The AX-DV has an aluminum die cast cover. The AX-DVF has a stainless steel faceplate. Both units include a camera, microphone, speaker, and call button. Tamper resistant screws are provided for mounting.

When the call button on the door station is pushed, the master station(s) ring and the video monitor comes on with the image from the door station's camera. The master station user then pushes the "TALK" button to initiate communication. The person at the door station speaks hands-free.

The AX door stations can be located up to 980' from the AX CEU and wired with CAT-5e cable. Additional equipment is available to interface with third party hardware for transmission over fiber optic cable or an IP network.

FEATURES:

- Color video camera with audio intercom
- 2-way hands-free voice communication with AX master station
- Call button to initiate call to master(s)
- White LED illuminator for low light conditions
- RJ45 jack for easy CAT-5e connection
- Surface (AX-DV) or flush mount (AX-DVF) styles available
- 980' wiring distance from CEU on CAT-5e cable

Covered with a Brass finish housing box

Paint Colors



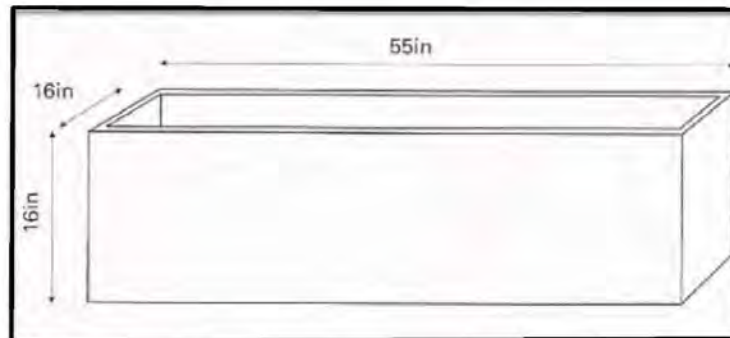
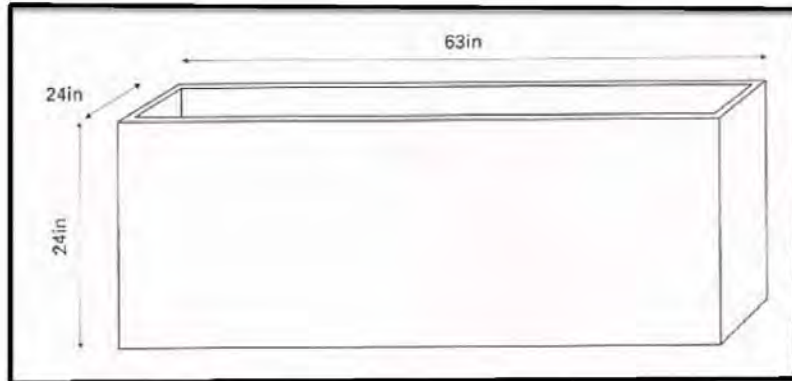
Benjamin Moore Black 2132-10;

315 COMMONWEALTH AVE.

Roof Deck Planters



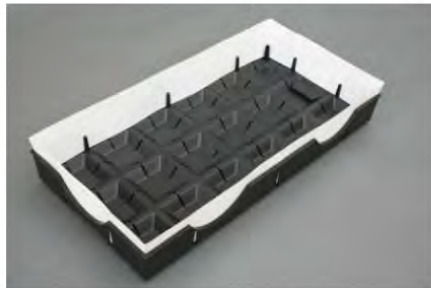
Lightweight, fiberglass planters with drainage
(4) 63"L x 24"D x 24"H 44.1 lbs ea
(2) 55"L x 16"W x 16"H 22 lbs ea



Roof Deck Planters

How The LiveRoof Module Works

The LiveRoof system, patented in the United States and Canada, creates a seamless, beautiful and instantly mature green roof. The modules disappear under the cover of soil and plants which means no ugly container edges or grid lines.



STEP 1

LiveRoof Licensed Grower inserts Soil Elevators™ into the LiveRoof module.



STEP 2

LiveRoof module is filled to the top of Soil Elevators with engineered soil.



STEP 3

Plants are grown to maturity in soil that extends above the module.



STEP 4

Upon delivery to roof, installer sets modules tightly in place, from parapet to



STEP 5

Throughout the installation process, Soil Elevators are removed for a seamless,



STEP 6

The entire system is watered thoroughly to settle any loose soil and get the LiveRoof

Green Roof



City of Warren Police Dept.

Location: Warren, Michigan, United States

Project Size: 4826 sq ft

Installation Date: 2010-10-01

Grower: LiveRoof, LLC

Features

Public

LiveRoof® Lite System

Green Roof

IPE Deck Tiles

Home / IPE Deck Tiles

PRODUCTS

Roof Pavers

Porcelain Pavers

IPE Deck Tiles

Cool-Roof Pavers

Concrete Pavers

Adjustable Pedestals

Paver-Tray™ – Wind Uplift

Turf-Tray™ – Artificial Turf

Plant-Tray™ – Green Roof

Pool Copings

Stair Treads

Detectable Warning Pavers

Quote Request

Catalog Request

Sample Request

(213) 380-5560

(213) 380-5561

Sales@TileTechPavers.com

Twitter

Facebook

LinkedIn

Google +

IPE Deck Tiles



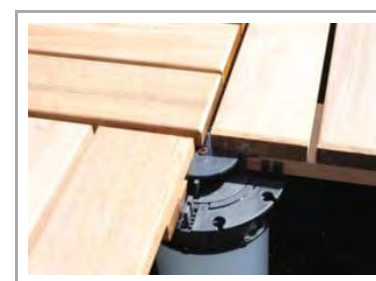
Product Features

IPE Deck Tiles Advantage & Features

IPE Deck Tiles are designed for constructing raised wood decks over exterior surfaces such as rooftops, terraces and plazas, in both residential and commercial applications.

Tile Tech's IPE Wood Tiles are constructed from kiln dried 1x3 IPE wood face slats secured to 3 IPE wood support runners (battens) using corrosion resistant stainless steel screws. Due to their high structural strength, dimensional stability and low flexing.

IPE Decking have the most modern style so far. These tiles are made out of certified ipe wood lumber, also pronounced EPAY wood, consisting of Tabebuia species, which is deemed as the most vital substance. They are intertwining tiles that are made out of IPE lumber. These days, they are used to make decks and are growing more and more popular among homeowners who have a luxurious preference. When this kind of tiling is set up on your deck, they can create a continuous intertwining design on the surface. Replacing or removing them are just as simple as setting them up, as well.



IPE Deck Tiles have curve cut slots on every corner that permit them to fit perfectly into pedestal supports and permit water to drain beneath the deck, unlike the traditional wood deck tiles in which water can just seep through them. Proprietors can select from two tile designs: straight or staggered style. Locals of California typically opt for the straight style due to its straight pattern, similar to the appearance of most wooden decks. However, there are also some who select the brick design in order to imitate the look of actual bricks.

The straight and staggered style are the two IPE Deck Tiles that are most appropriate for decks. But, if you want something more luxurious or decorative, you may select the design, which is most suitable for borders or centerpieces. The advantage of this design is that it does not require you to follow particular instructions, which makes it very simple to set up. Such tiles can be customized to satisfy your preferences, as well. If you dislike rough edges, you may have straight reducers in order to smooth out the outer edges of your decking. You may even have corner reducers, which are able to easily clip out corners in order to get rid of jagged edges or simply to give your deck tiles an elegant finish.

The advantage of lumber IPE Decking is easy compared to other tiles. If you opt to do it yourself, you'll be given an installation toolkit that includes corrosion resistant screws. It is up to you and your planned design whether you use them or not. If you decide to use only the deck planks, you may require the screws in order to make sure that the wood deck slats hold perfectly onto the wood frame. You won't need to purchase bases or other polishes anymore, since the IPE Deck Tiles are painted with preservative oil.

IPE Deck Tiles are specifically designed for installation on our pedestal supports, enabling decks with a perfectly horizontal surface to be built over sloping or irregular surfaces. Pedestals can be either fixed height or adjustable for slop compensation. The Pedestal System provide a broad footprint that can easily be installed and placed directly on top of roofing and waterproofing systems with no insulation.



Smooth Surface

Structural IPE Deck tiles is our most popular tile and exceeds the Americans with Disabilities Act requirements for Static Coefficient of friction in a wet environment (ASTM-C1028-89)



Grooved Surface

Structural IPE Deck tiles provide the highest slip resistance for wet climates. often specified when added slip resistance is desired but not required.



Sealed or Weathered

IPE Deck Tiles can be sealed to maintain its natural beauty or it can be allowed to weather to a beautiful silver gray. To retain the rich color, an oil based finish with ultraviolet inhibitors is recommended.



Commercial Duty

Constructed with 7/8" thick boards for extra strength and resistance to flexing. Slot cut corner of IPE Deck Tiles enables a special washer to be inserted and invisibly screwed to the top of the pedestal, locking down the tiles and ensuring a safe, secure and level surface.



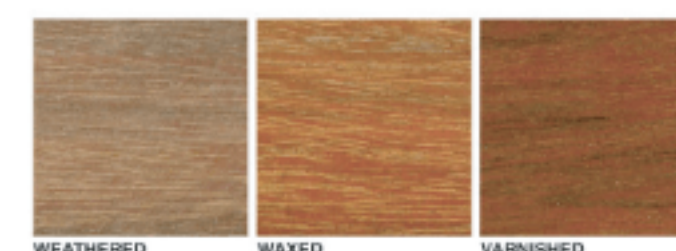
FSC Certified

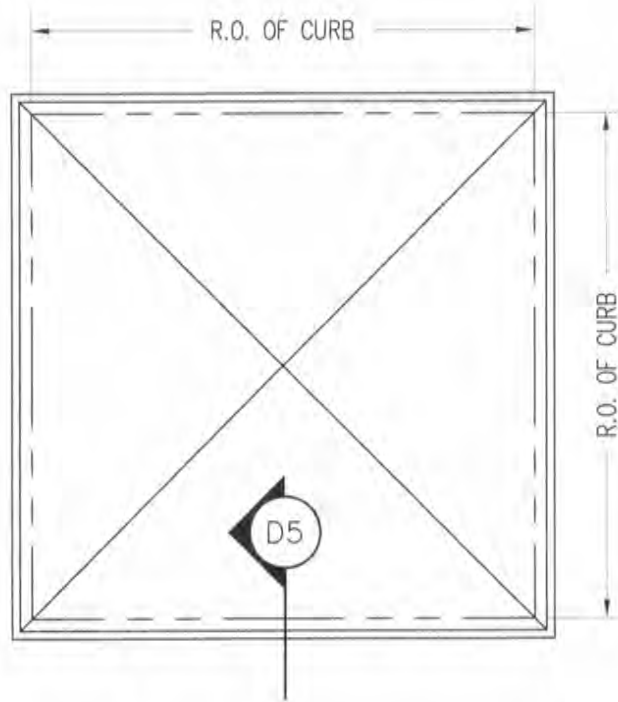
Our FSC® Ipe wood tiles are commercial grade and constructed from responsibly harvested Forest Stewardship Council® certified hardwood and meet their high global standards for forest sustainability. FSC® certification assures wood products have positive environmental attributes, are backed by a global system of verification, and could contribute to LEED points and SITES criteria.



Adjustable Pedestals

Our PATENTED Hybrid pedestal system is designed for IPE Deck Tiles to lock down & lay level over a built up roof decks.





PYRAMID DOME SHOWN - CURVED DOME SIMILAR

GENERAL NOTES:

- 1) UNIT TESTED TO MEET OR EXCEED OSHA FALL GUARD INTENT

MODEL	R.O. OF CURB	OUTER DOME RISE	INNER DOME RISE
2020	14 1/4" X 14 1/4"	5"	3"
2028	14 1/4" X 22 1/4"	5"	3"
2052	14 1/4" X 46 1/4"	5"	3"
2424	19" X 19"	5"	3"
2828	22 1/4" X 22 1/4"	7"	5"
2836	22 1/4" X 30 1/4"	7"	5"
2852	22 1/4" X 46 1/4"	7"	5"
3636	30 1/4" X 30 1/4"	8"	6"
3652	30 1/4" X 46 1/4"	10"	8"
3676	30 1/4" X 69 1/2"	10"	8"
4242	37" X 37"	10"	8"
4280	37" X 75"	12"	10"
→ 4364	38" X 59"	12"	10"
→ 5252	46 1/4" X 46 1/4"	12 1/2"	10 1/2"
→ 5276	46 1/4" X 69 1/2"	12"	10"
5296	46 1/4" X 89 1/2"	12"	10"
6060	55" X 55"	14"	12"
6476	57 1/2" X 69 1/2"	16"	14"
6496	57 1/2" X 89 1/2"	16"	14"
→ 7272	68" X 68"	16"	14"
8080	75" X 75"	18"	16"
9898	92 1/2" X 92 1/2"	22"	20"

GxH

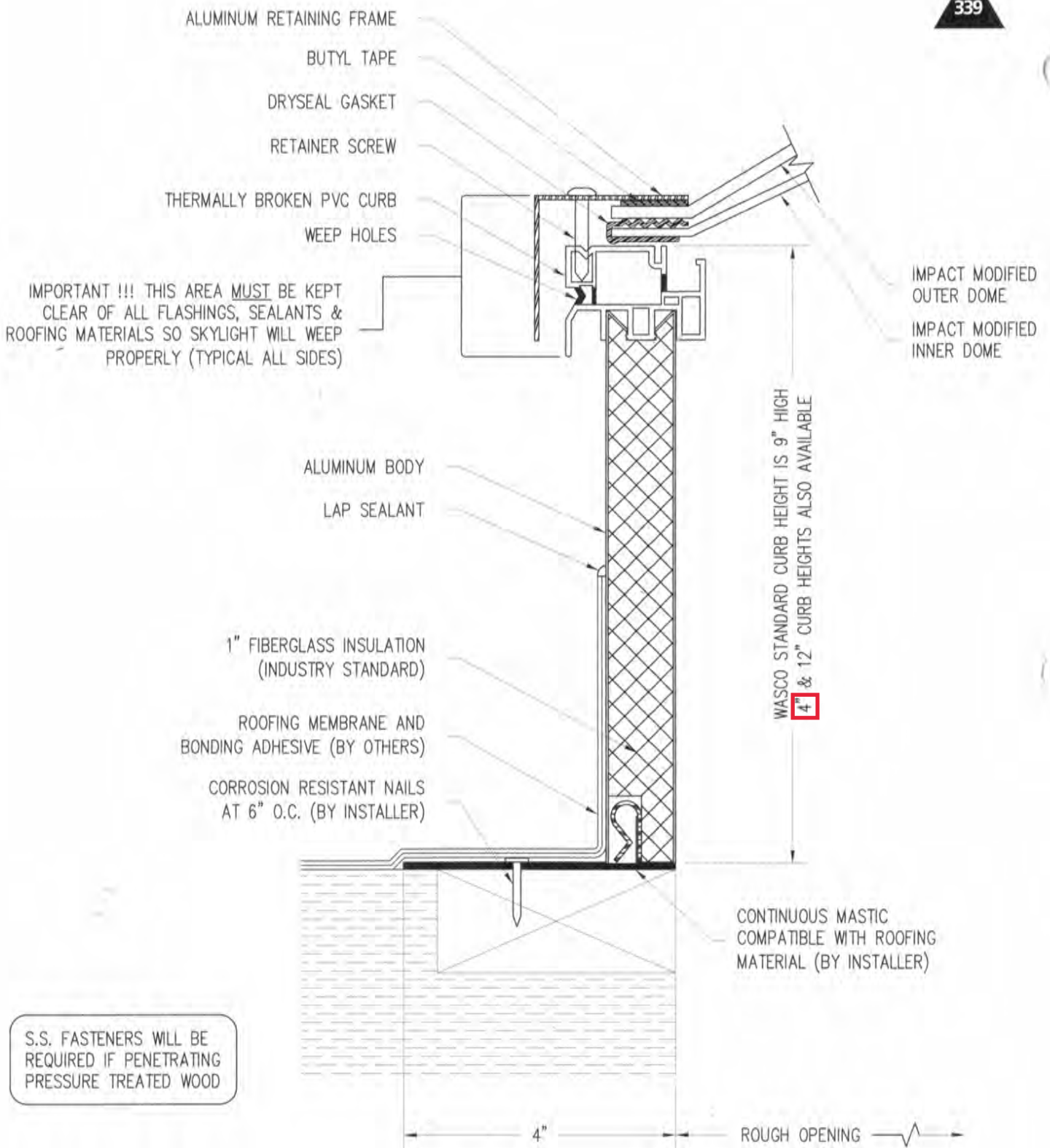
Pyramidal Skylights



Wasco Products, Inc.
 22 Pioneer Avenue, P.O. Box 351
 Sanford, ME 04073
 Fax: 207-490-5270 sales@wascoproducts.com
 800-388-0293 www.wascoproducts.com

Sentinel (DDSA) (DDSAP)
Deck Mount Skydome
Unit Plan View

PLN5

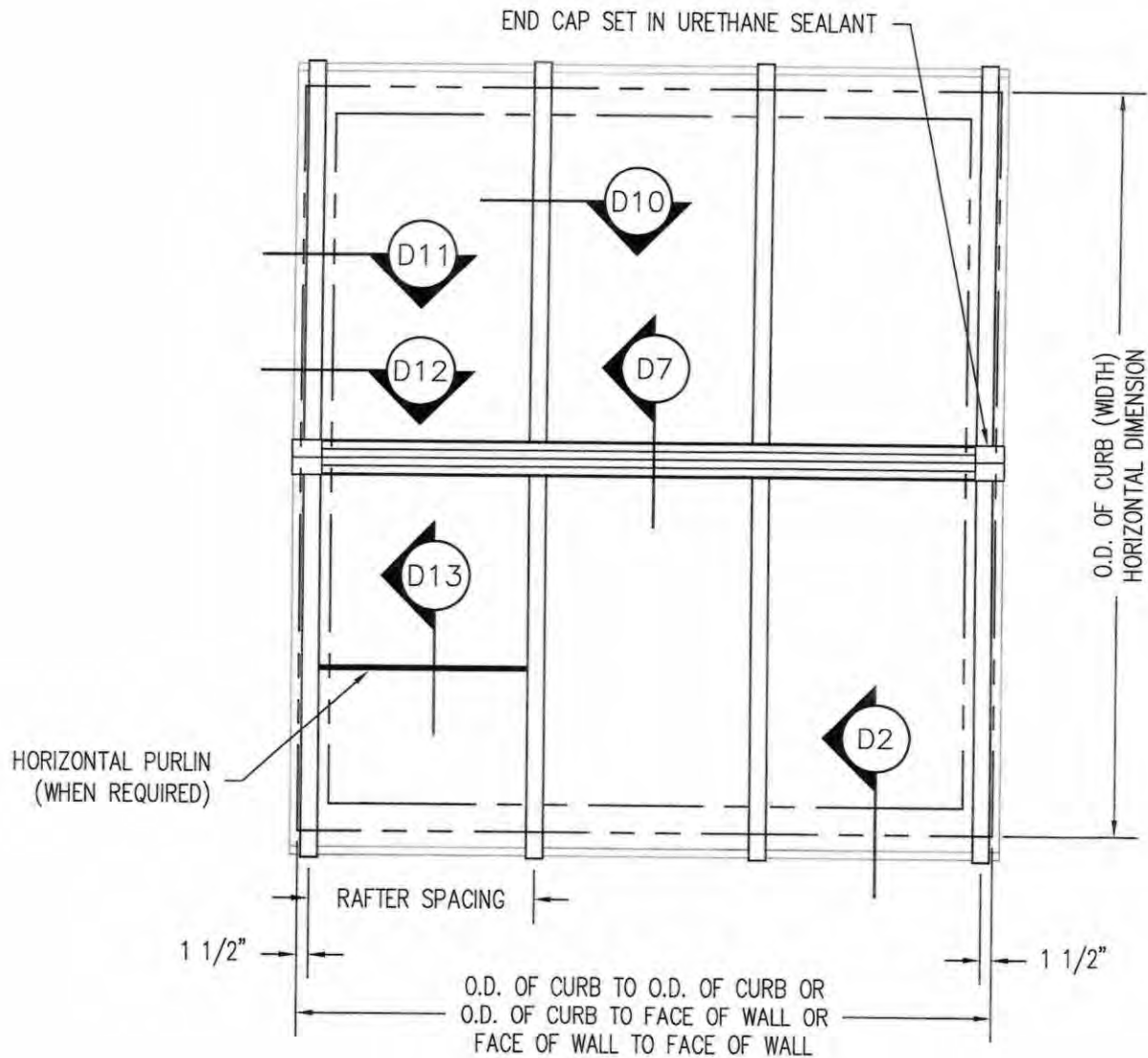


S.S. FASTENERS WILL BE REQUIRED IF PENETRATING PRESSURE TREATED WOOD

GENERAL NOTES:
1) UNIT TESTED TO MEET OR EXCEED OSHA FAIL GUARD INTENT

Pyramidal Skylight
Curb - 4" High

 <p>Since 1935 Wasco SKYLIGHTS</p>	<p>Wasco Products, Inc. 22 Pioneer Avenue, P.O. Box 351 Sanford, ME 04073 Fax: 207-490-5270 sales@wascoproducts.com 800-388-0293 www.wascoproducts.com</p>	<p>DDSA and DDSAP SA Sill Detail</p>	<p>D5</p>
--	--	---	------------------



GENERAL NOTES:

- 1) UNIT(S) ARE AVAILABLE IN WASCO'S STANDARD PITCHES ONLY (4:12, 6:12, 7:12, 12:12)
- 2) RAFTER LOCATION BASED ON WASCO'S RECOMMENDATIONS AND AAMA GLAZING GUIDELINES (BASED ON SIZE OF UNIT, TYPE OF GLAZING, CUSTOMER'S REQUEST, ETC.)
- 3) FOR NON-STANDARD PITCHES REFER TO THE PINNACLE 350 AND 600 SYSTEM

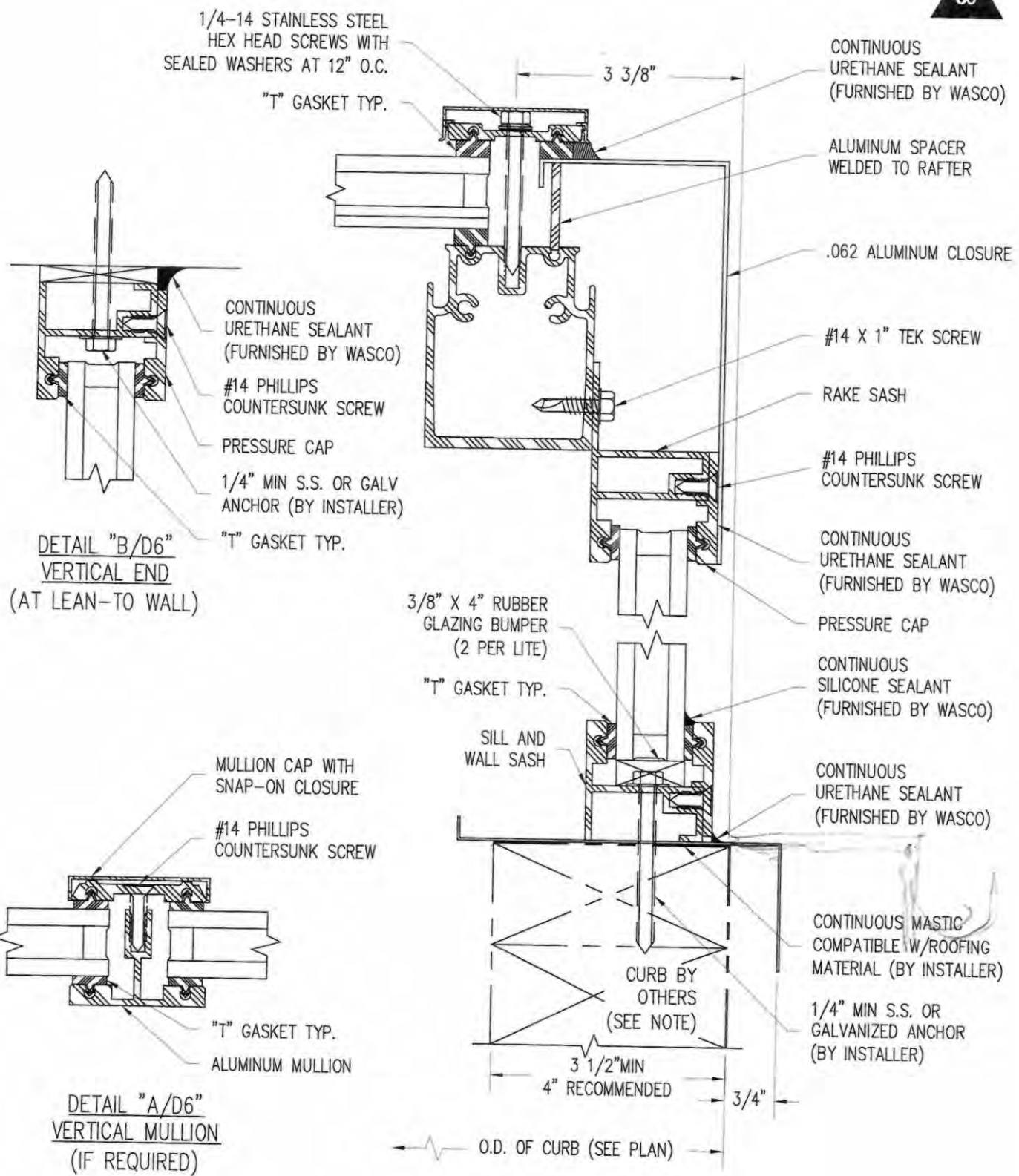
Glazed Roof System

Since 1935
Wasco[®]
 SKYLIGHTS

Wasco Products, Inc.
 22 Pioneer Avenue, P.O. Box 351
 Sanford, ME 04073
 Fax: 207-490-5270 sales@wascoproducts.com
 800-388-0293 www.wascoproducts.com

Pinnacle 300 (SR)
Structural Ridge
Plan View

PLN7



Glazed Roof System

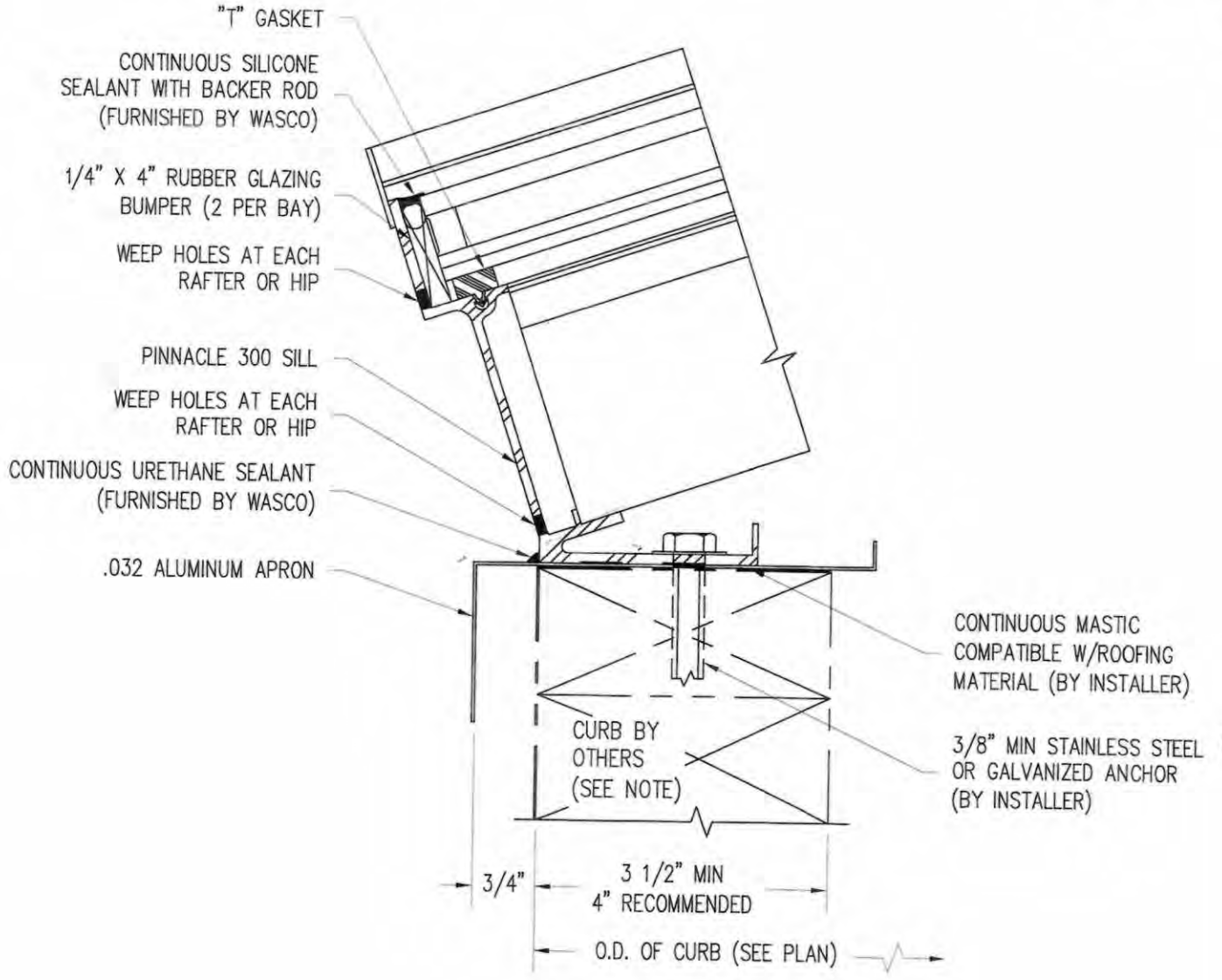
Since 1935



Wasco Products, Inc.
22 Pioneer Avenue, P.O. Box 351
Sanford, ME 04073
Fax: 207-490-5270 sales@wascoproducts.com
800-388-0293 www.wascoproducts.com


**Pinnacle 300
Vertical End Detail**

D6



S.S. FASTENERS WILL BE REQUIRED IF PENETRATING PRESSURE TREATED WOOD

Glazed Roof System

<p>Since 1935</p>  <p>Wasco SKYLIGHTS</p>	<p>Wasco Products, Inc. 22 Pioneer Avenue, P.O. Box 351 Sanford, ME 04073 Fax: 207-490-5270 sales@wascoproducts.com 800-388-0293 www.wascoproducts.com</p>	<p>Pinnacle 300 Sill Detail</p>	<p>D1</p>
---	--	--	------------------

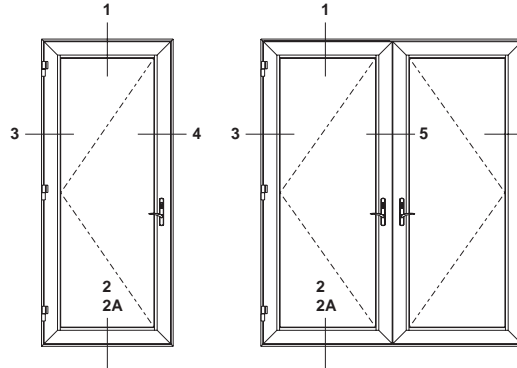
Additional information and CAD details are available at www.kawneer.com

Single Door

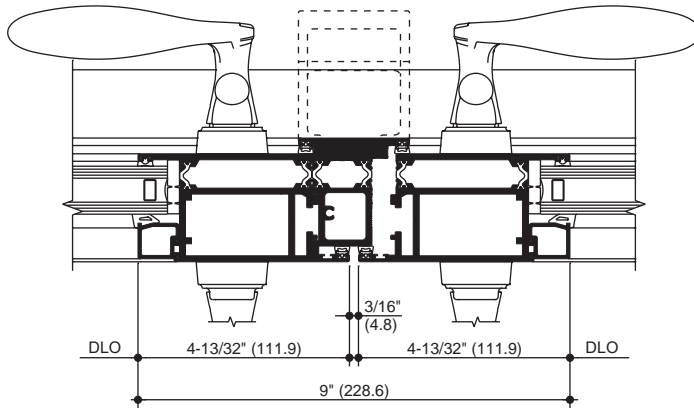
Maximum Frame Size = 48" x 120"
(1,219.2 x 3,048)
Minimum Frame Size = 30" x 73"
(762 x 1,854.2)

Pair of Doors

Maximum Frame Size = 96" x 96"
(2,438.4 x 2,438.4)
Minimum Frame Size = 60" x 81"
(1,524 x 2,057.4)



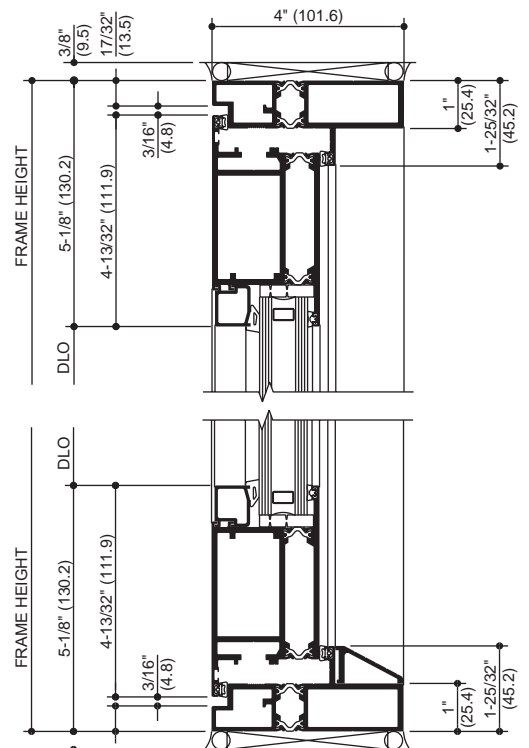
OUTSWING DOORS & FRAME



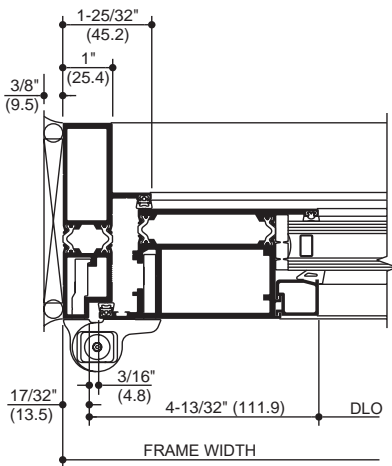
5 MEETING STILE



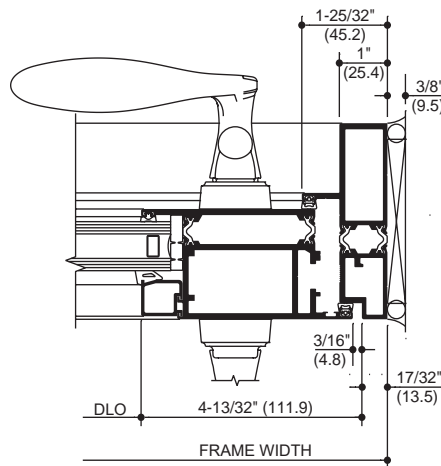
2 THRESHOLD



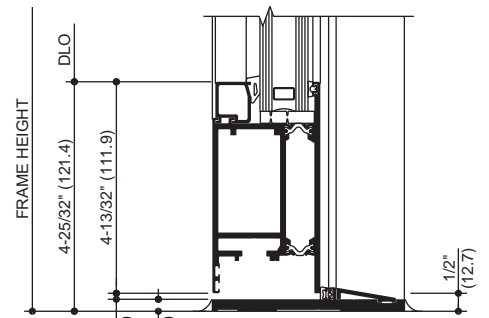
1 HEAD



3 PIVOT JAMB



4 LOCK JAMB AT DEADBOLT/LATCHLOCK



2A OPTIONAL LOW PROFILE THRESHOLD

Laws and building and safety codes governing the design and use of Kawneer products, such as glazed entrance, window, and curtain wall products, vary widely. Kawneer does not control the selection of product configurations, operating hardware, or glazing materials, and assumes no responsibility therefor.

Kawneer reserves the right to change configuration without prior notice when deemed necessary for product improvement.
© 2017, Kawneer Company, Inc.