





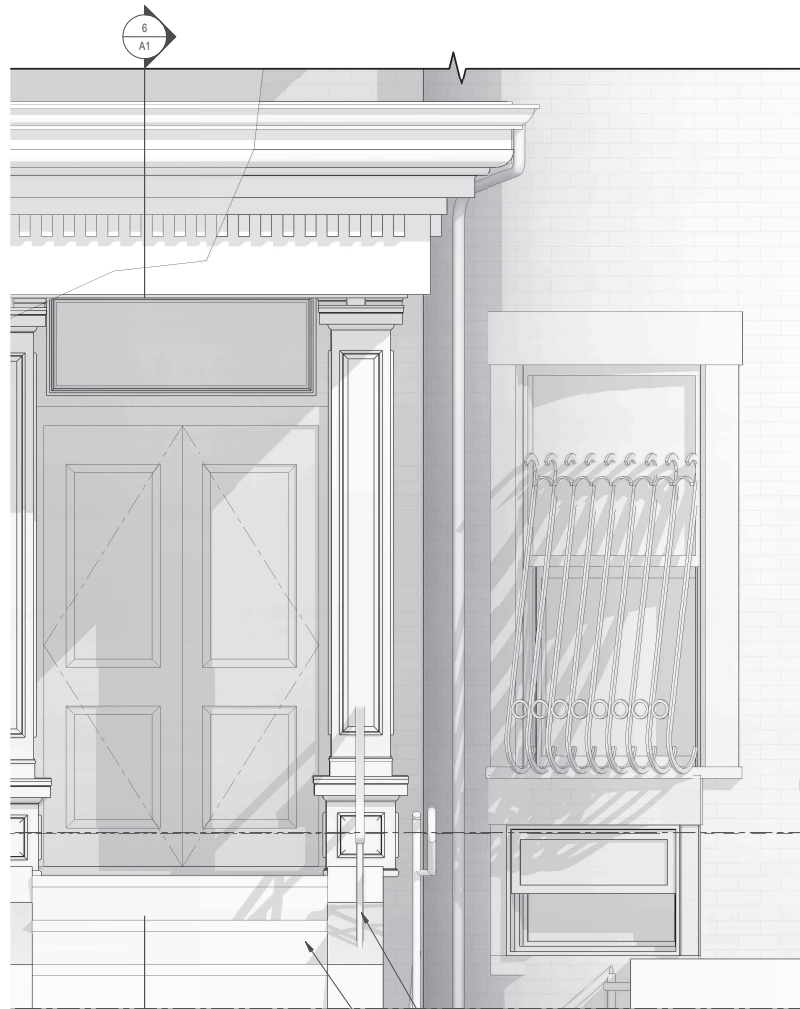
1-3 St. Charles Street  
View of Front Steps



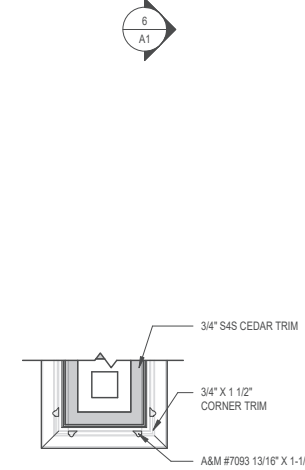
1 St. Charles Street View of Front Steps



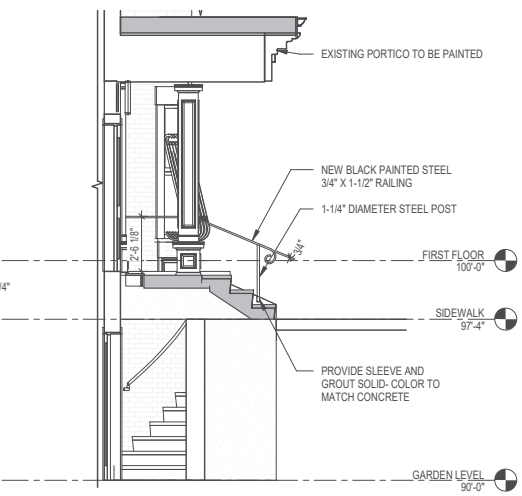
1-3 St. Charles Street Front Elevation



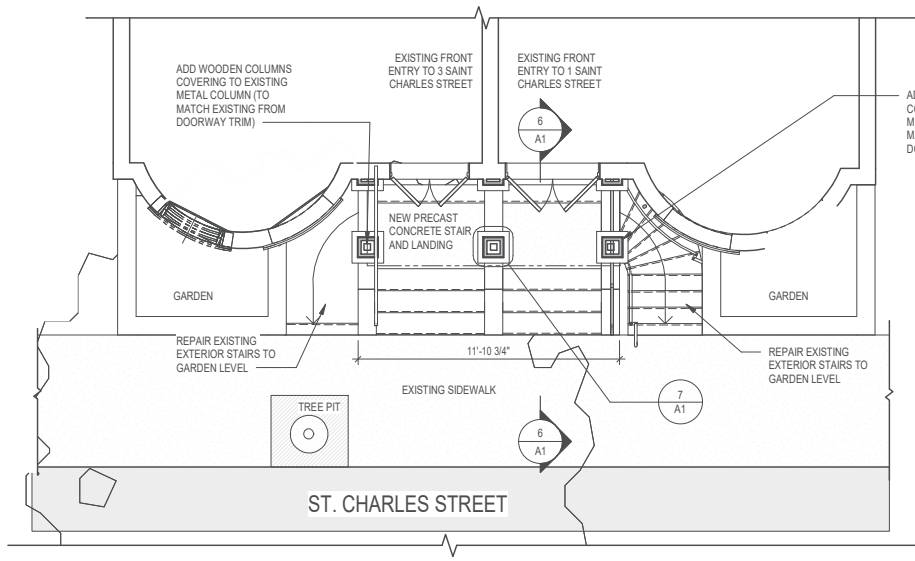
5 PROPOSED ENTRY  
3/4" = 1'-0"



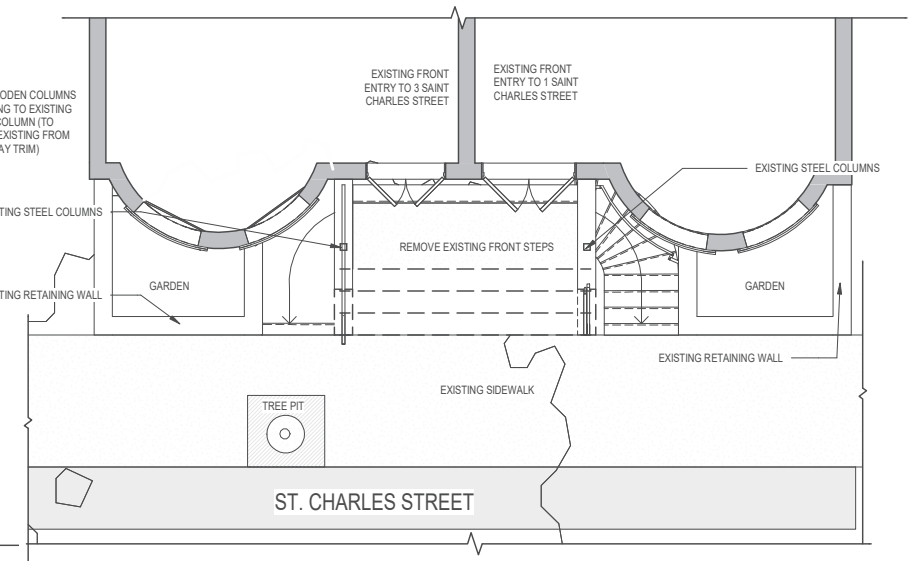
7 COLUMN DETAIL  
1" = 1'-0"



6 Section 1  
1/4" = 1'-0"



4 PROPOSED PLAN AT ENTRY  
1/4" = 1'-0"



3 EXISTING PLAN AT ENTRY  
1/4" = 1'-0"



2 WEST PROPOSED  
1/4" = 1'-0"



1 WEST EXISTING  
1/4" = 1'-0"

**Timothy Burke**  
ARCHITECTURE  
142 BERKELEY STREET, BOSTON MASSACHUSETTS 02116  
P: 617.266.1332 | W: timothyburke.net | F: 617.266.1116

REV.	DATE	DESCRIPTION

FRONT ENTRY PROPOSAL

1-3 SAINT CHARLES STREET  
BOSTON, MA 02116

A1