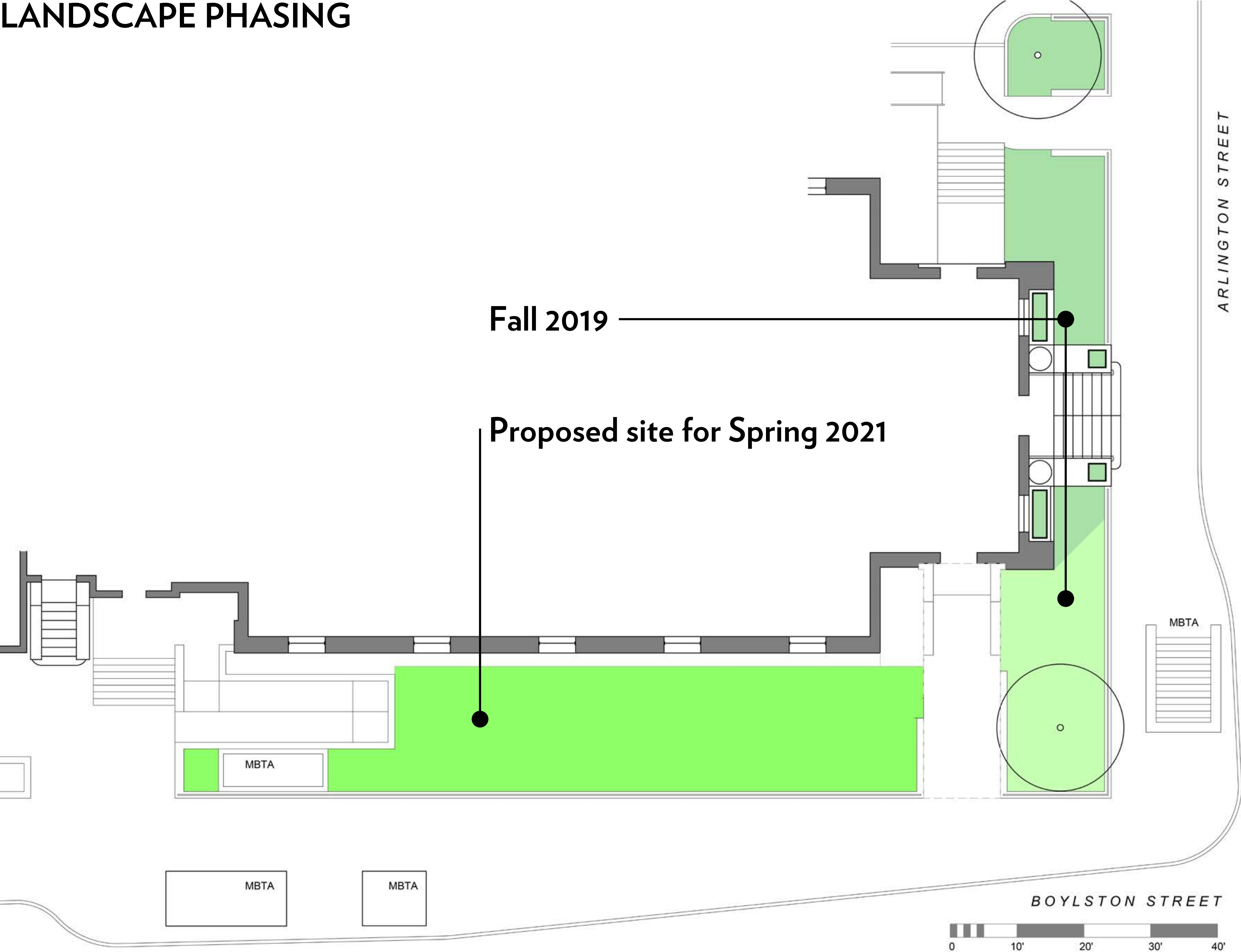
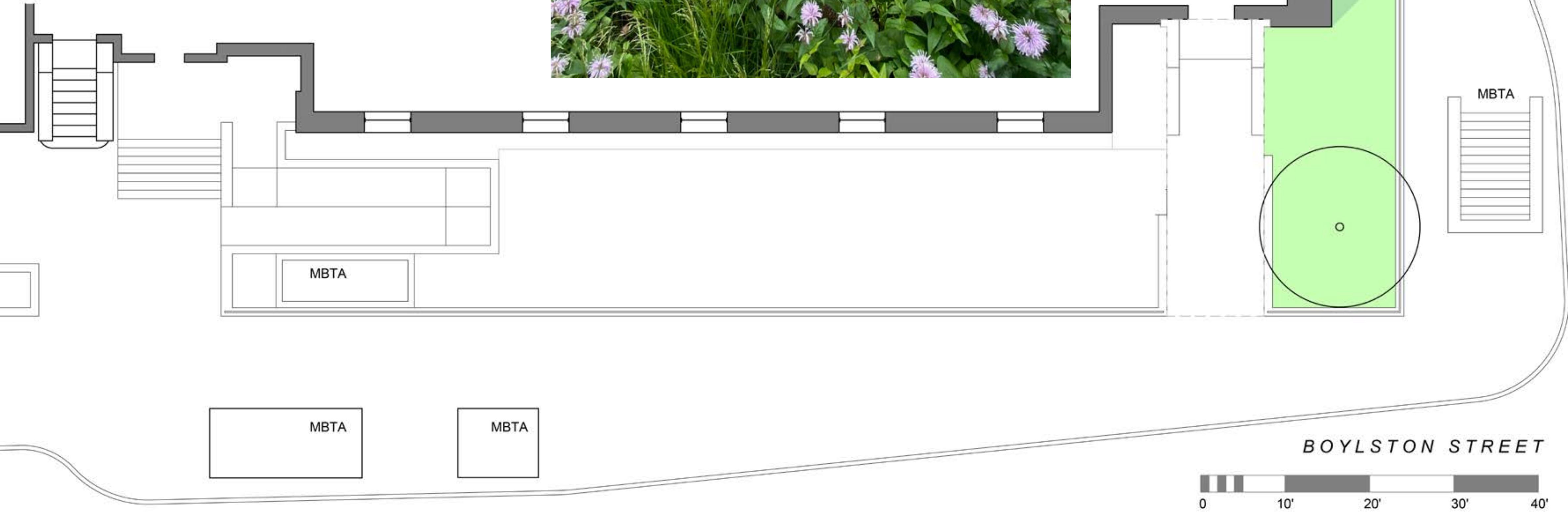




LANDSCAPE PHASING



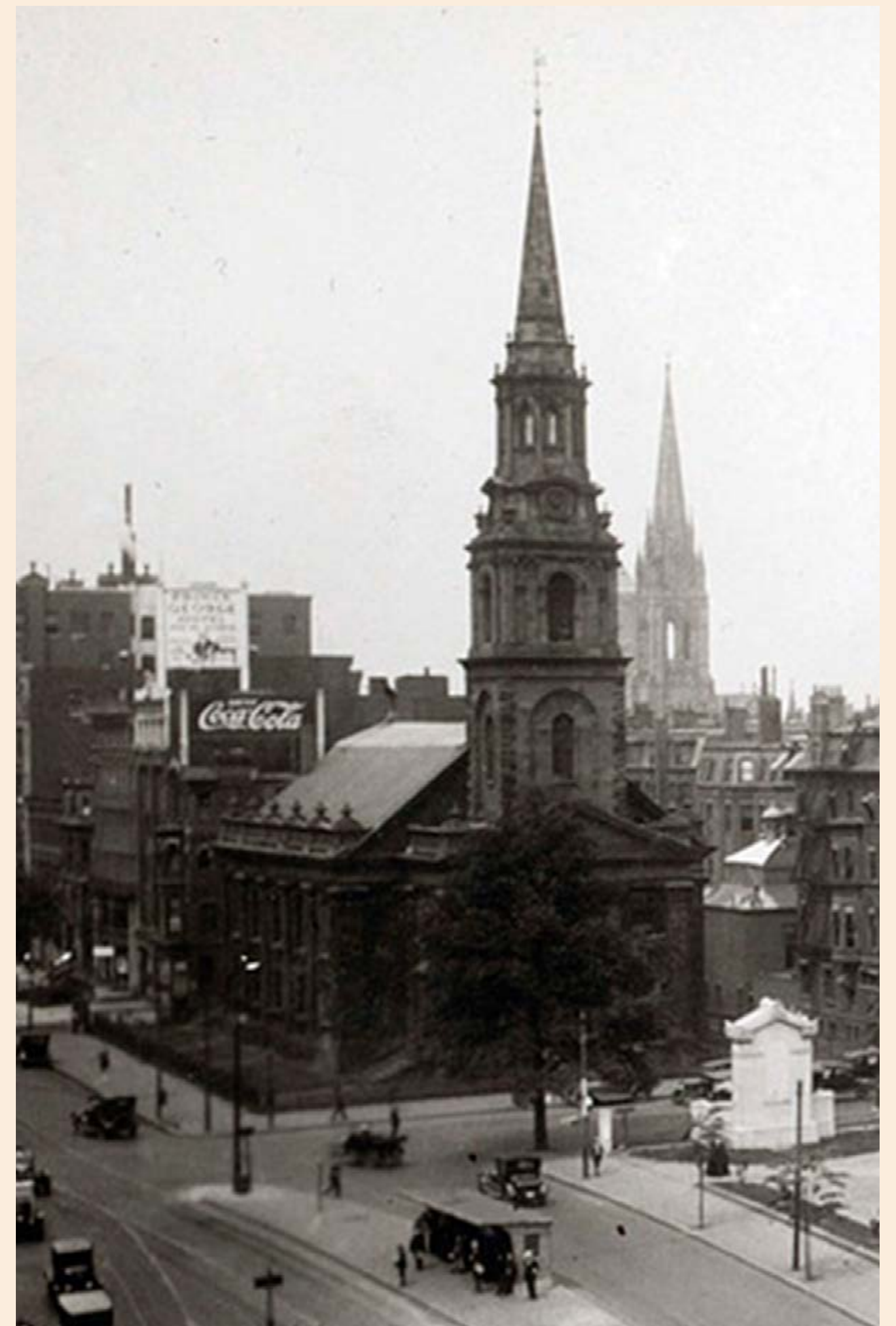
FALL 2019 PLANTINGS





REMOVE 3 MAGNOLIAS

- shade historic windows;
obscure elevation of church
- not historic or characteristic



2019 IMPROVEMENTS



CLEAN UP

- stabilize stair foundations if indicated
- during stone inventory, move stones to stair/walk area
- remove plywood fence
- remove other debris



2019 IMPROVEMENTS



INTERIM PLANTINGS

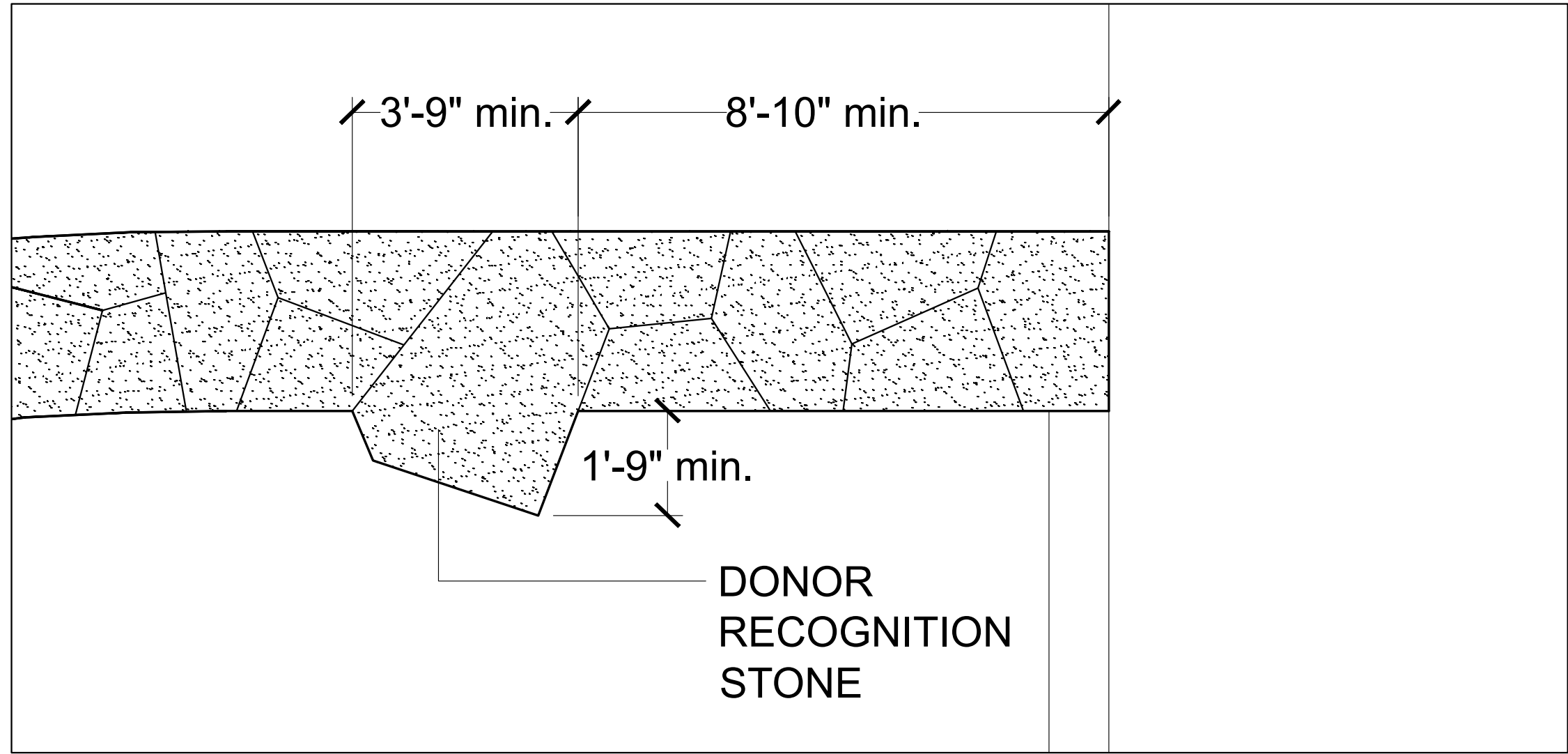
- remove planter boxes, leave turf and perennials in place
- add lawn / self-seeding annuals
- topsoil as needed
- hand irrigation only

2019 IMPROVEMENTS

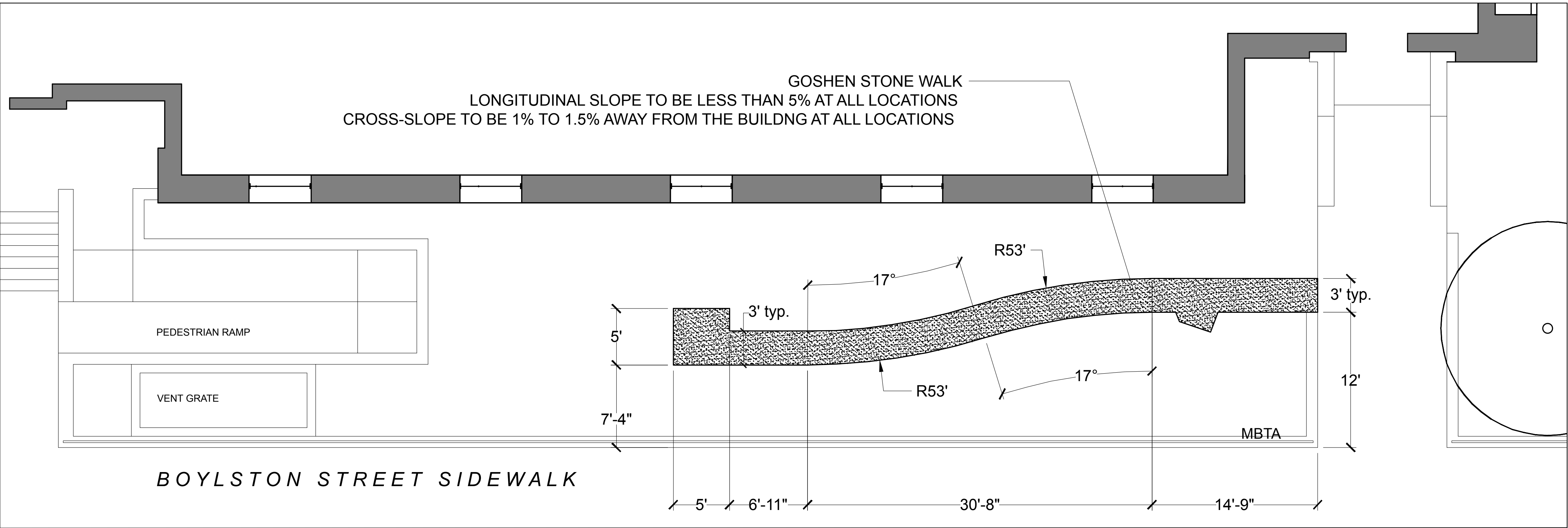
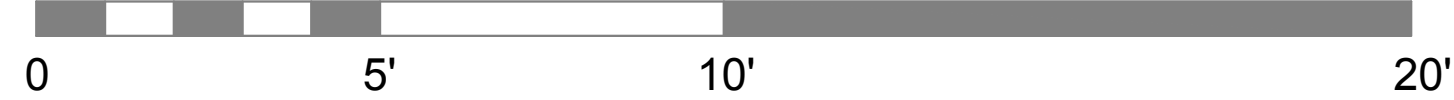


2019 IMPROVEMENTS AND 2020 CLEANUP

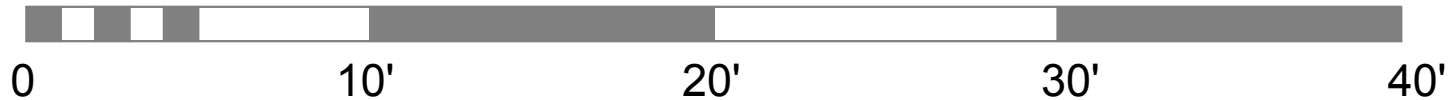
PROPOSED LANDSCAPE IMPROVEMENTS



2 DETAIL PLAN



3 SITE IMPROVEMENTS PLAN

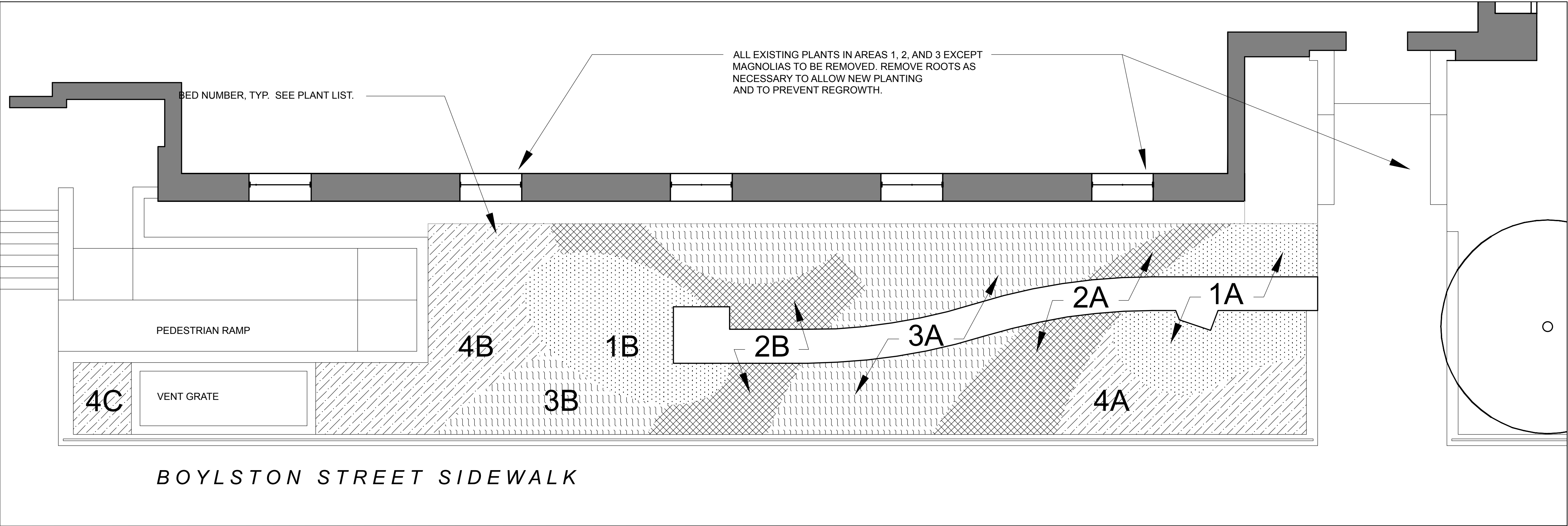


PROPOSED LANDSCAPE IMPROVEMENTS

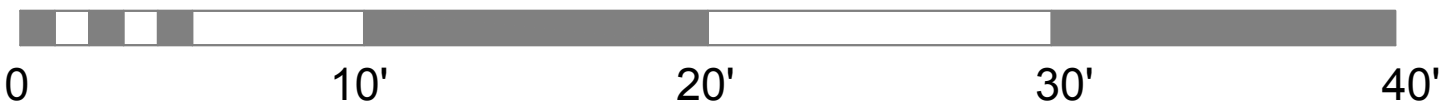


ZONE	1A, 1B	2A, 2B	3A, 3B	4A, 4B, 4C
primary species	<i>Echinacea tennesseensis</i> 'Rocky Top'	<i>Amsonia hubrichtii</i>	<i>Echinacea</i> 'Virgin'	<i>Echinacea</i> Transplants
	<i>Pycnanthemum tenuifolium</i>	<i>Baptisia</i> 'Blue Towers'	<i>Schizachyrium</i> 'Standing Ovation'	<i>Schizachyrium</i> 'Standing Ovation'
	<i>Sporobolus heterolepis</i>	<i>Helianthus angustifolius</i>	<i>Vernonia</i> 'Iron Butterfly'	<i>Monarda bradburiana</i>
secondary species	<i>Symphotrichum ericoides</i> 'Snow Flurry'	<i>Callirhoe involucrata</i>	<i>Pycnanthemum tenuifolium</i>	<i>Asclepias tuberosa</i>
	<i>Symphotrichum oblongifolium</i> 'October Skies'	<i>Rudbeckia</i> Transplants	<i>Symphotrichum ericoides</i> 'Snow Flurry'	<i>Pycnanthemum muticum</i>
ground layer species	<i>Packera obovata</i>	<i>Fragaria virginiana</i>	<i>Packera obovata</i>	<i>Packera obovata</i>

2 PLANT SPECIES BY ZONE



3 PLANTING PLAN



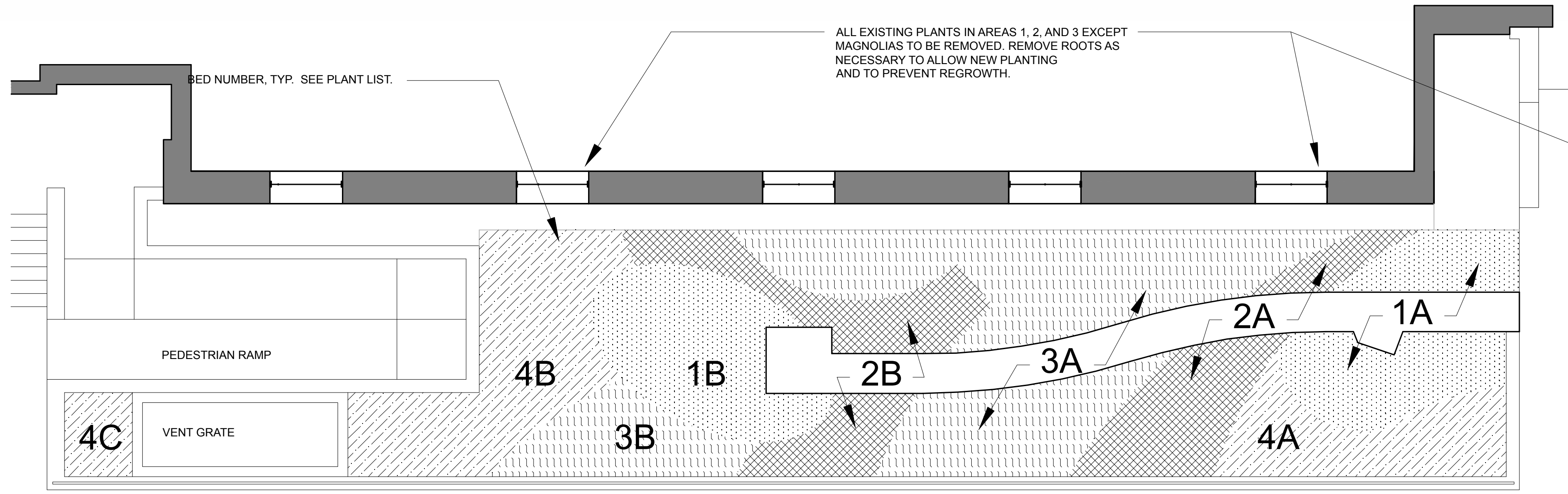
PROPOSED LANDSCAPE IMPROVEMENTS

ZONE	1A, 1B	2A, 2B	3A, 3B	4A, 4B, 4C
primary species	<i>Echinacea tennesseensis</i> 'Rocky Top'	<i>Amsonia hubrichtii</i>	<i>Echinacea</i> 'Virgin'	<i>Echinacea</i> Transplants
	<i>Pycnanthemum tenuifolium</i>	<i>Baptisia</i> 'Blue Towers'	<i>Schizachyrium</i> 'Standing Ovation'	<i>Schizachyrium</i> 'Standing Ovation'
	<i>Sporobolus heterolepis</i>	<i>Helianthus angustifolius</i>	<i>Vernonia</i> 'Iron Butterfly'	<i>Monarda bradburiana</i>
secondary species	<i>Symphyotrichum ericoides</i> 'Snow Flurry'	<i>Callirhoe involucrata</i>	<i>Pycnanthemum tenuifolium</i>	<i>Asclepias tuberosa</i>
	<i>Symphyotrichum oblongifolium</i> 'October Skies'	<i>Rudbeckia</i> Transplants	<i>Symphyotrichum ericoides</i> 'Snow Flurry'	<i>Pycnanthemum muticum</i>
ground layer species	<i>Packera obovata</i>	<i>Fragaria virginiana</i>	<i>Packera obovata</i>	<i>Packera obovata</i>



PROPOSED LANDSCAPE IMPROVEMENTS

ZONE	1A, 1B	2A, 2B	3A, 3B	4A, 4B, 4C
primary species	<i>Echinacea tennesseensis</i> 'Rocky Top'	<i>Amsonia hubrichtii</i>	<i>Echinacea</i> 'Virgin'	<i>Echinacea</i> Transplants
	<i>Pycnanthemum tenuifolium</i>	<i>Baptisia</i> 'Blue Towers'	<i>Schizachyrium</i> 'Standing Ovation'	<i>Schizachyrium</i> 'Standing Ovation'
	<i>Sporobolus heterolepis</i>	<i>Helianthus angustifolius</i>	<i>Vernonia</i> 'Iron Butterfly'	<i>Monarda bradburiana</i>
secondary species	<i>Symphotrichum ericoides</i> 'Snow Flurry'	<i>Callirhoe involucrata</i>	<i>Pycnanthemum tenuifolium</i>	<i>Asclepias tuberosa</i>
	<i>Symphotrichum oblongifolium</i> 'October Skies'	<i>Rudbeckia</i> Transplants	<i>Symphotrichum ericoides</i> 'Snow Flurry'	<i>Pycnanthemum muticum</i>
ground layer species	<i>Packera obovata</i>	<i>Fragaria virginiana</i>	<i>Packera obovata</i>	<i>Packera obovata</i>



BOYLSTON STREET SIDEWALK