

Roslindale Wetlands Urban Wild Design Update Presentation

November 19, 2020



INTRODUCTIONS

Boston Parks and Recreation Department

Paul Sutton, Project Manager

Liz Sullivan, External Affairs & Marketing Dir.

Landscape Architects - Crowley Cottrell, LLC

Michelle Crowley, Principal

Jessica Brown, Associate

Anna Curtis-Heald, Designer

Wetland Scientist - Hughes Environmental Consulting

Tom Hughes

Partners

Longfellow Area Neighborhood Association (LANA)

Roslindale Wetlands Task Force

Agenda

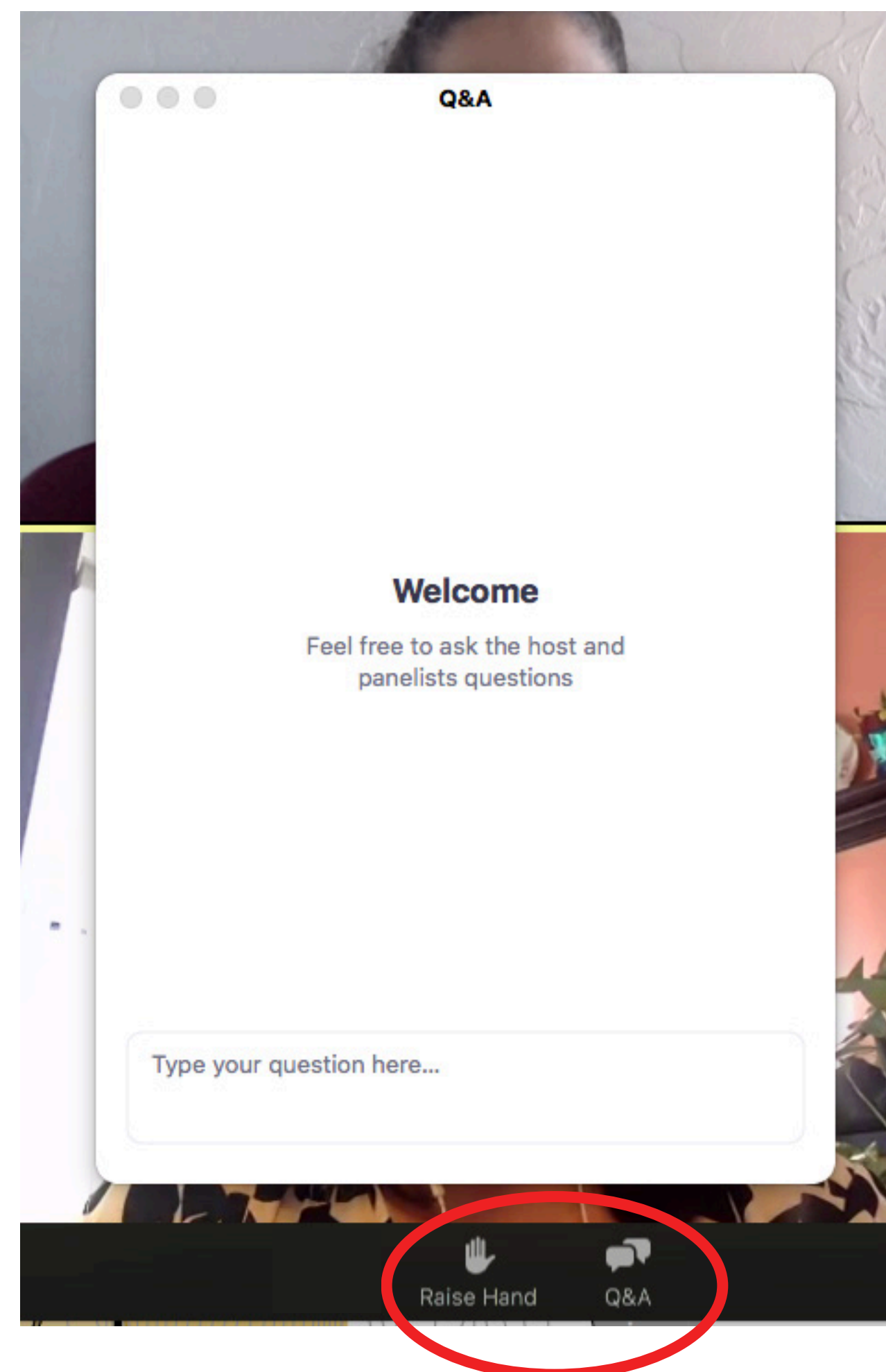
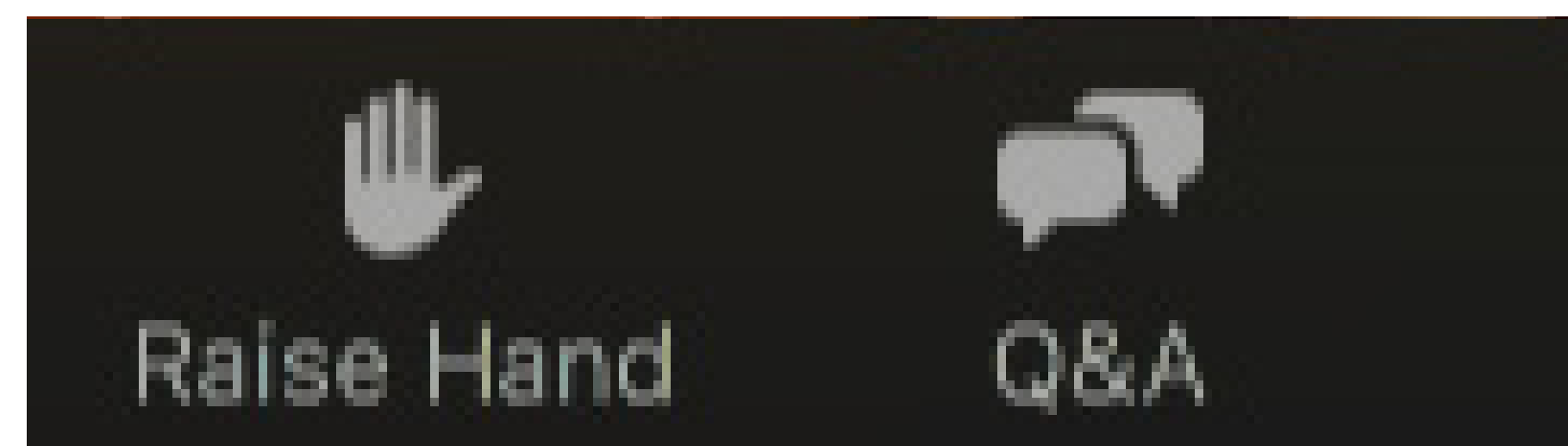
HOW TO COMMENT

PROCESS RE-CAP

DESIGN GOALS

DESIGN UPDATE

HOW TO COMMENT

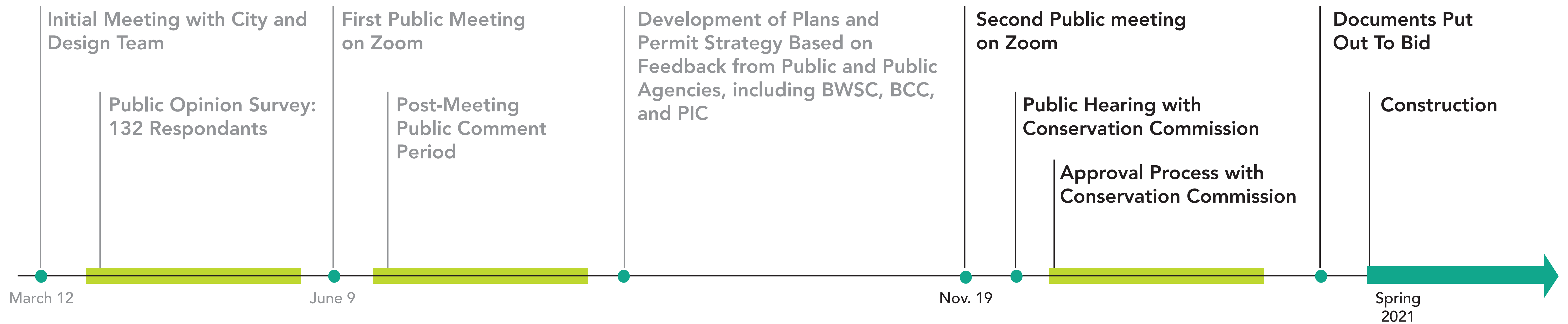


-This is a webinar format, so all participants are muted with video off. You will only see panelists.

-Please use Q&A button to ask questions during the presentation. The list of questions will be monitored, and either answered in real time or held to the end.

-During discussion at the end, you can "raise hand" and will be taken off mute in the order the moderator sees the "hands."

PROCESS RECAP



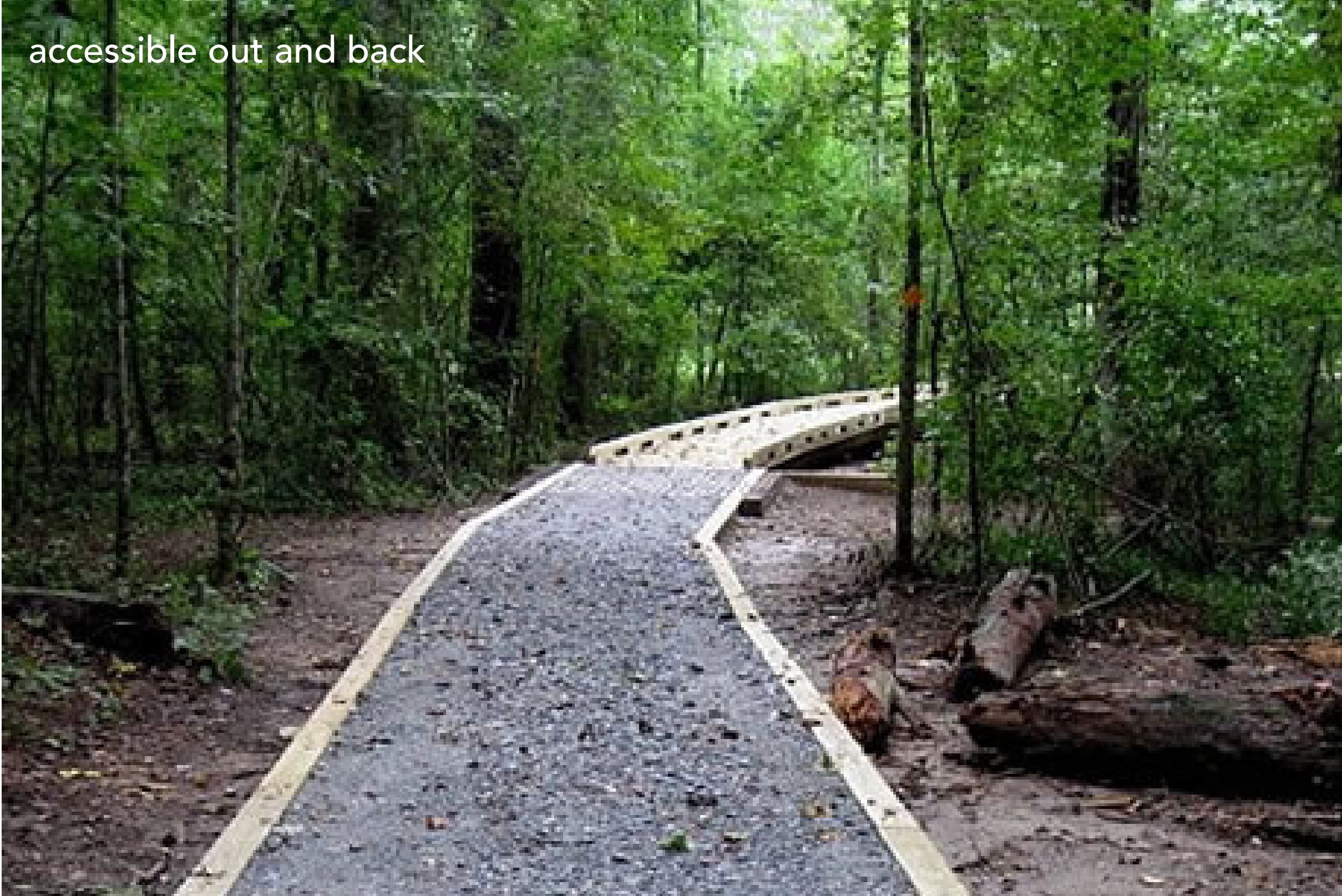
DESIGN GOALS

- **Restore Plant and Wildlife Habitat**
- **Complete the Trail Loop**
- **Improve Trail Accessibility**
- **Make Entrances More Welcoming**
- **Minimize Impact**

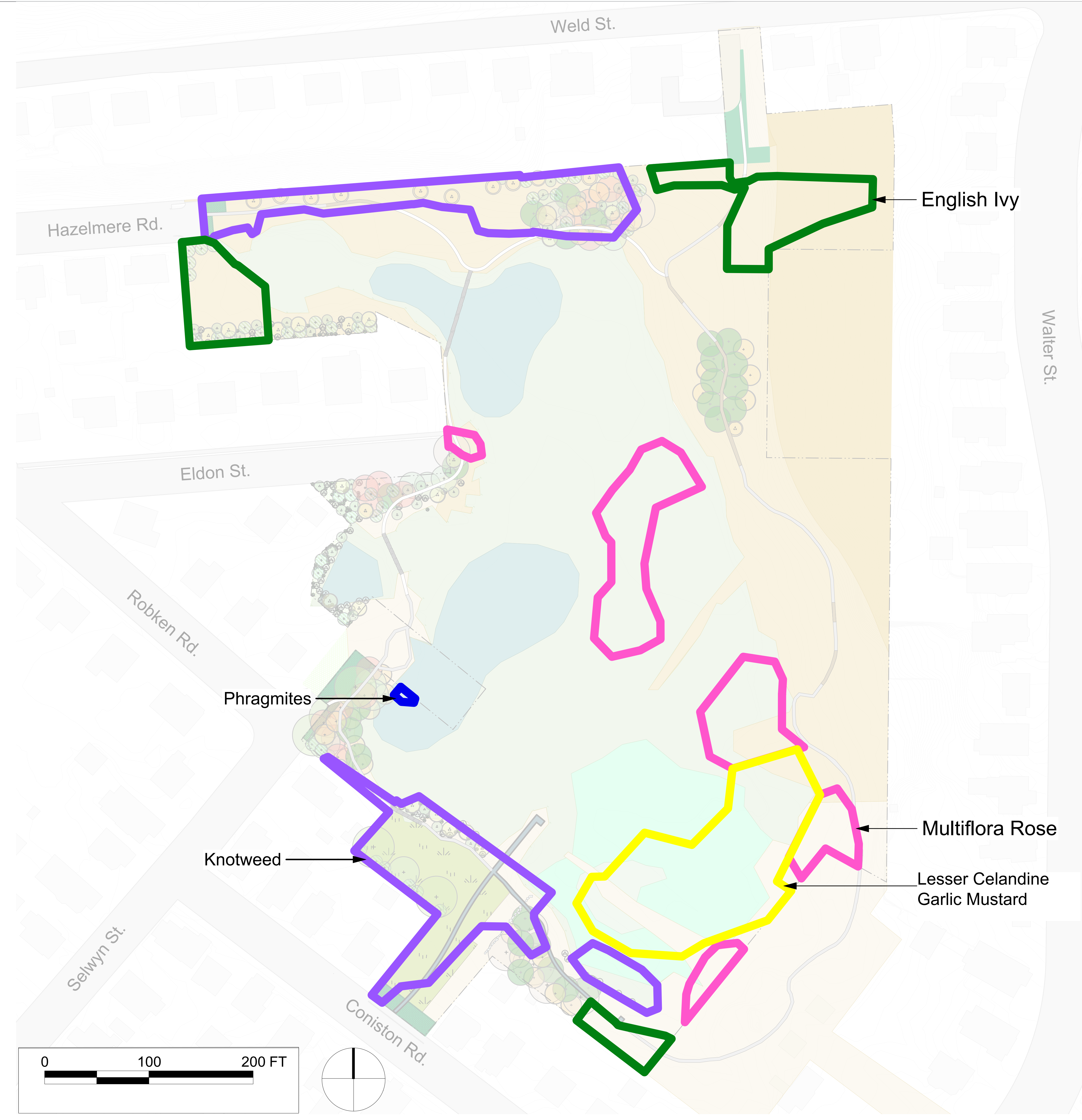
DESIGN UPDATES

- Overall Trail Improvements
- Wetland Restoration Areas
- Selwyn Entrance
- Coniston Entrance
- Hazelmere Entrance
- Weld Entrance

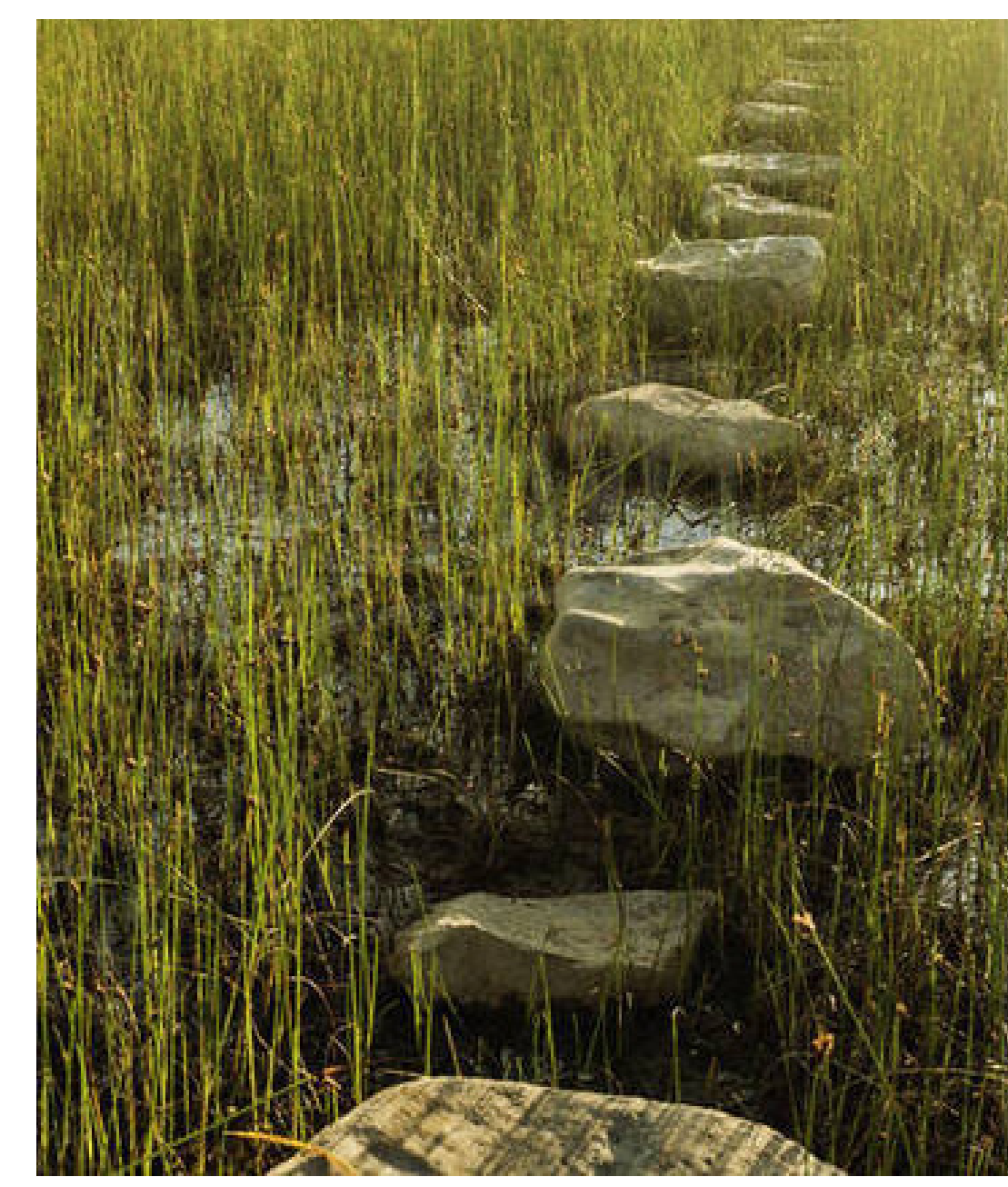
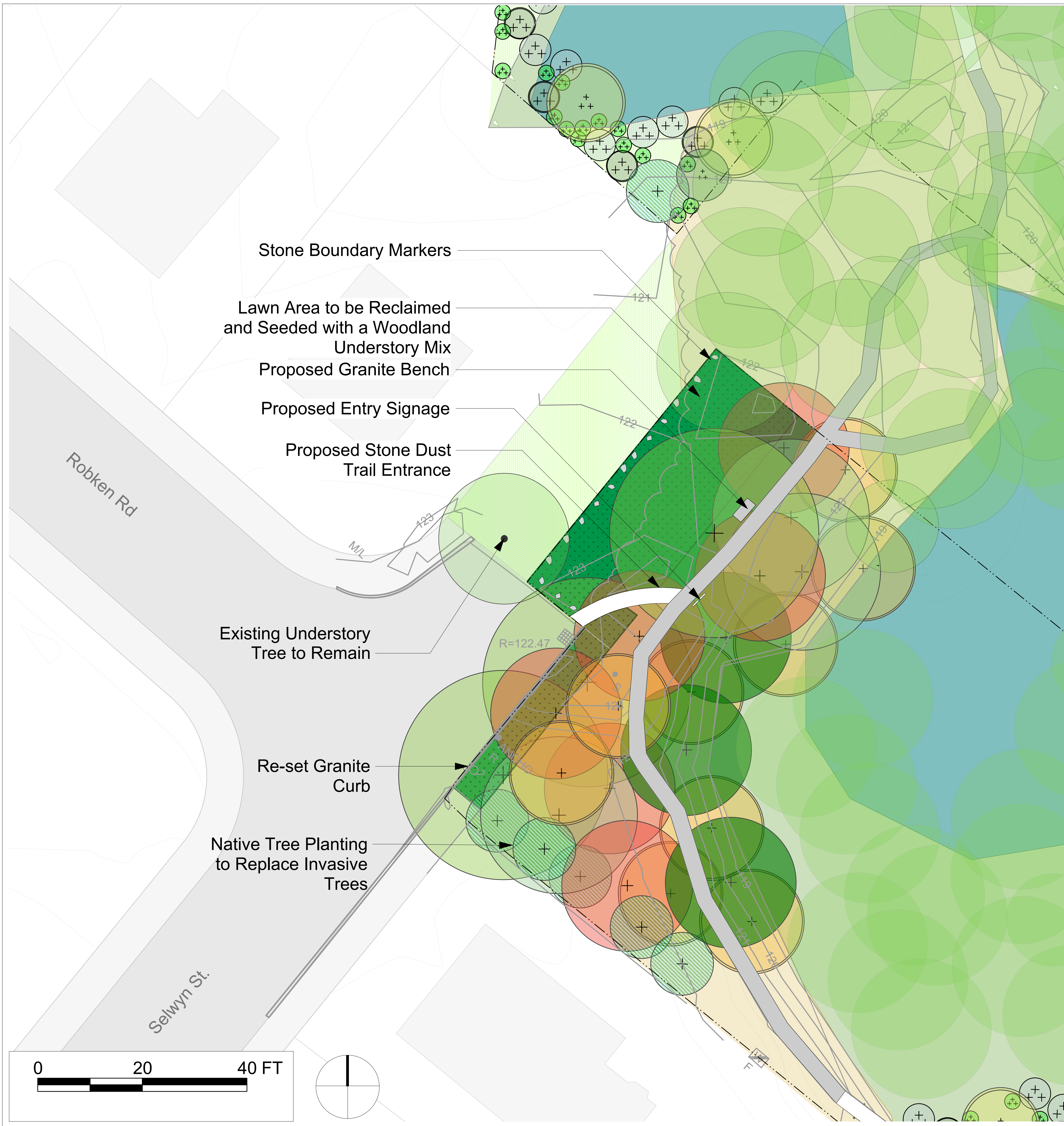
Overall Trail Improvements



Habitat Restoration Areas



Selwyn Entrance



Coniston Entrance

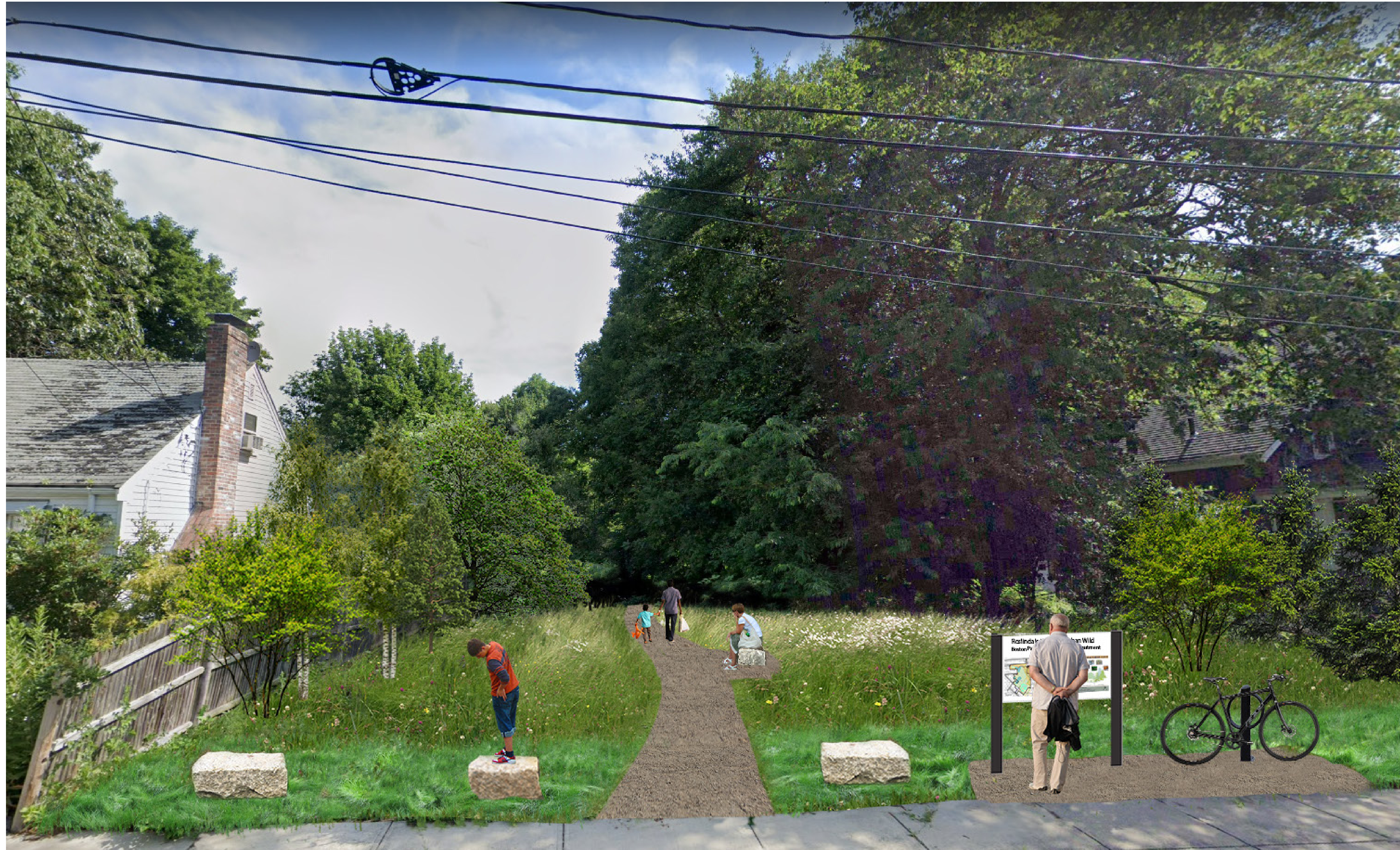


Coniston Entrance



before

Coniston Entrance



after

Hazelmere Entrance



Weld Entrance



LET'S TALK!

