



RINGER PARK COMPREHENSIVE PLAN



How to use Zoom Webinar

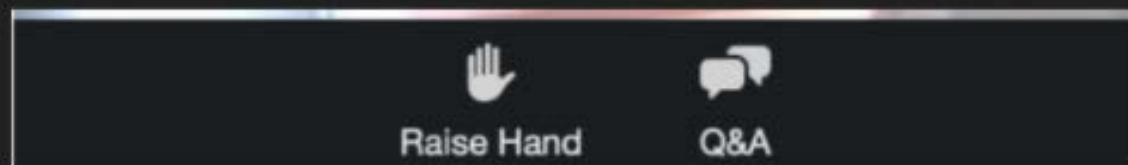
Please note during this presentation, attendees can see the presenters but we can't see you. Here is how you can participate during the question and answer part of the presentation.

Joining via Phone? (dial)

*9 to raise hand

*6 to unmute/mute

Joining via web (i.e computer, tablet, etc?)

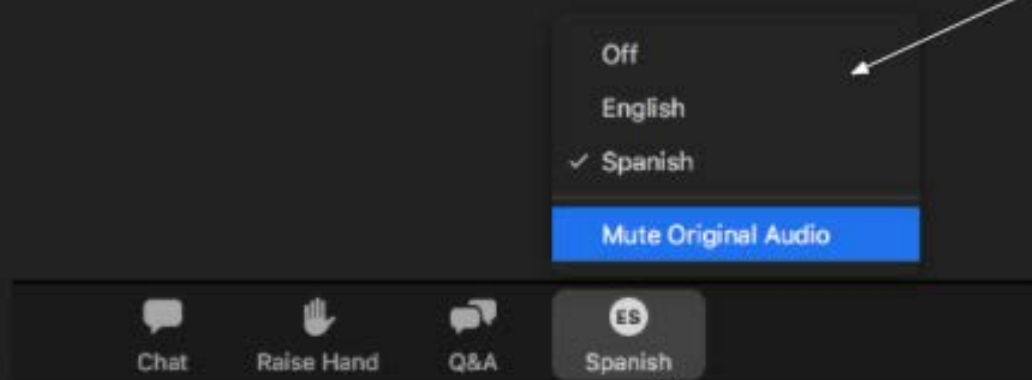


Use to raise your hand during Q&A

Click here to enter your questions throughout presentation

How to access Interpretation

Select the language
(may be different
than your actual
language)



Click interpretation button on
the bottom of screen to
access drop down menu

AGENDA

1

PROJECT TEAM

2

PROJECT STATUS/RECAP

3

PRESENTATION OF SITE ANALYSIS

4

LISTENING AND DISCUSSION

5

CLOSING REMARKS & NEXT STEPS

PROJECT TEAM

Cathy Baker-Eclipse

Project Manager

cathy.baker-eclipse@boston.gov or 617-961-3058

Christine Brandao

Outreach Coordinator, External Affairs

christine.brandao@boston.gov or 617-961-3006

Kyle Zick

Principal, Kyle Zick Landscape Architecture, Inc.

Danielle D. Desilets

Senior Associate, Kyle Zick Landscape Architecture, Inc.

Conor Newman

Office of Neighborhood Services

conor.newman@boston.gov or 617-635-2678





CITY OF BOSTON PRIORITIES

- **Expanding walkable access to parks**
- **Addressing equity**
- **Climate resilience**
- **Health**
- **Housing and community building**



PARK & RECREATION GOALS

- **Accessible and available to all**
- **Diverse, balanced, and efficient mix of uses**
- **Meaningful and inclusive community engagement**
- **Adaptive and resilient landscapes**
- **Promote connections**

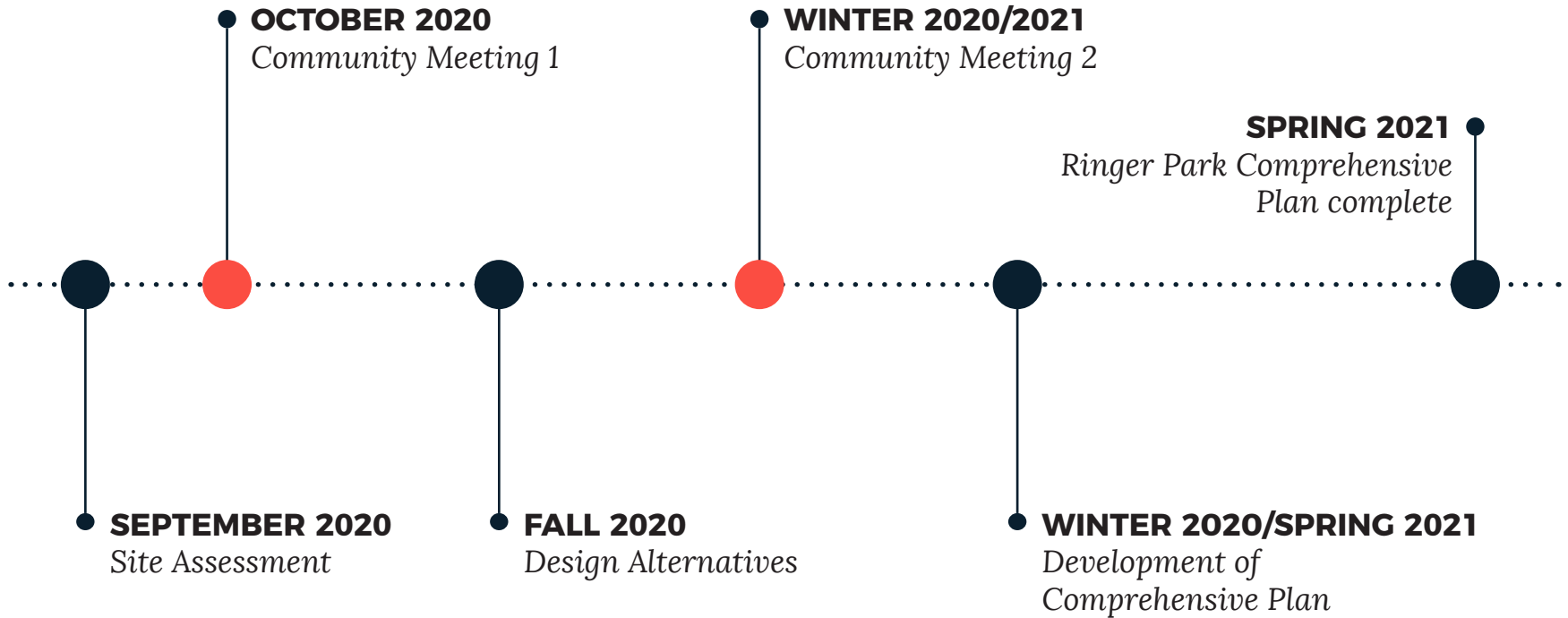


RINGER PARK COMPREHENSIVE PLAN SCOPE OF WORK

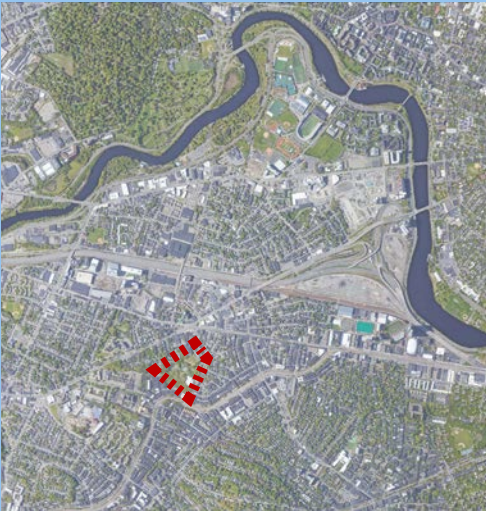
- **Plan for long-term and short-term improvements for the entire park**



PROJECT TIMELINE



PROJECT OVERVIEW



SURROUNDINGS



PROJECT OVERVIEW

SURROUNDING AMENITIES

Fidelis Way Park:

Spray feature, basketball court & playground

Roberts/Hooker St. Playground:

Spray feature & playground

McKinney Playground:

Baseball/softball/little league, batting cage, basketball court, street hockey & playground

Penniman Road Play Area:

Basketball court & playground

Portsmouth Playground:

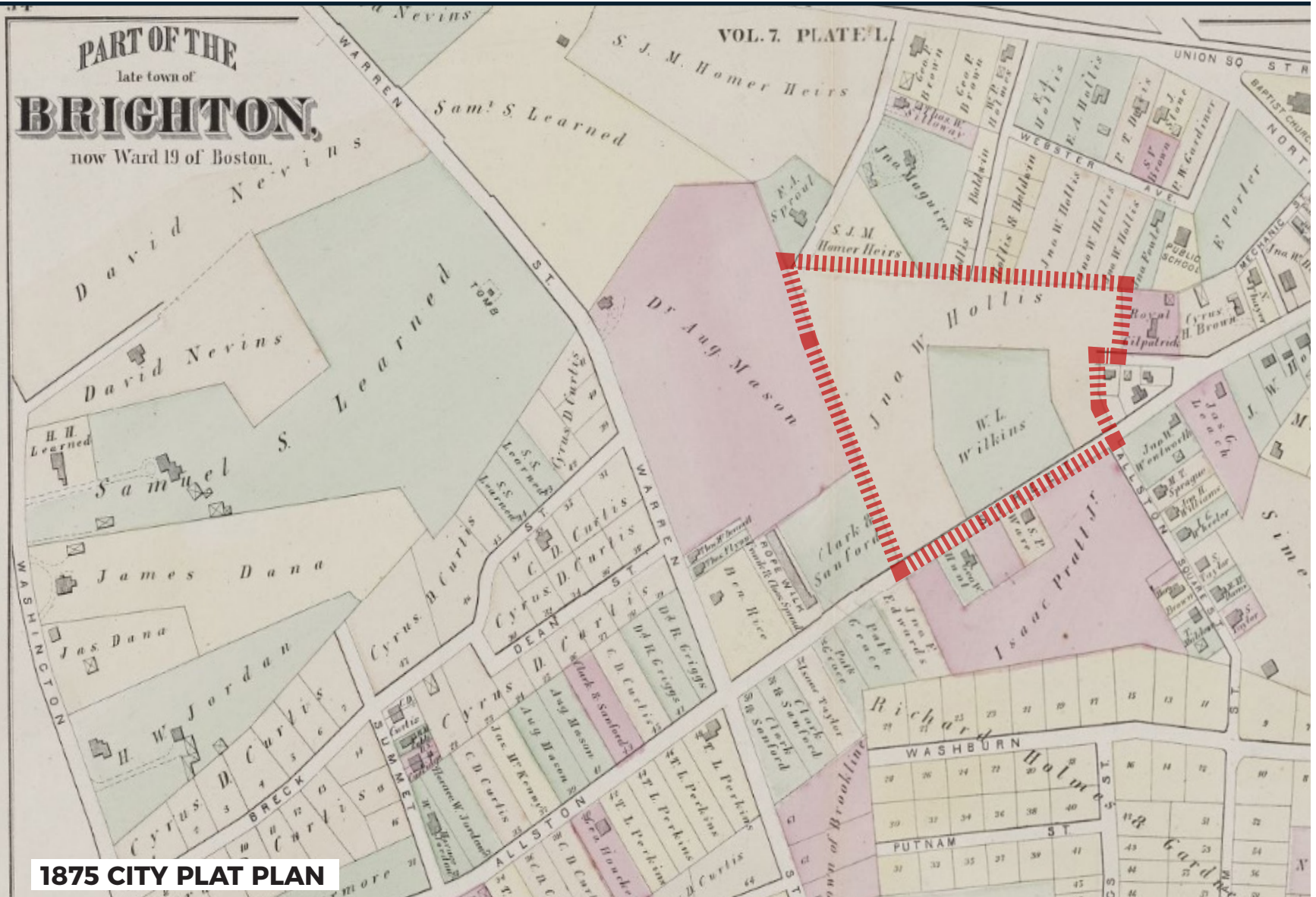
Basketball court, multi-use field, soccer, fitness station, & playground



BIRD'S-EYE VIEW

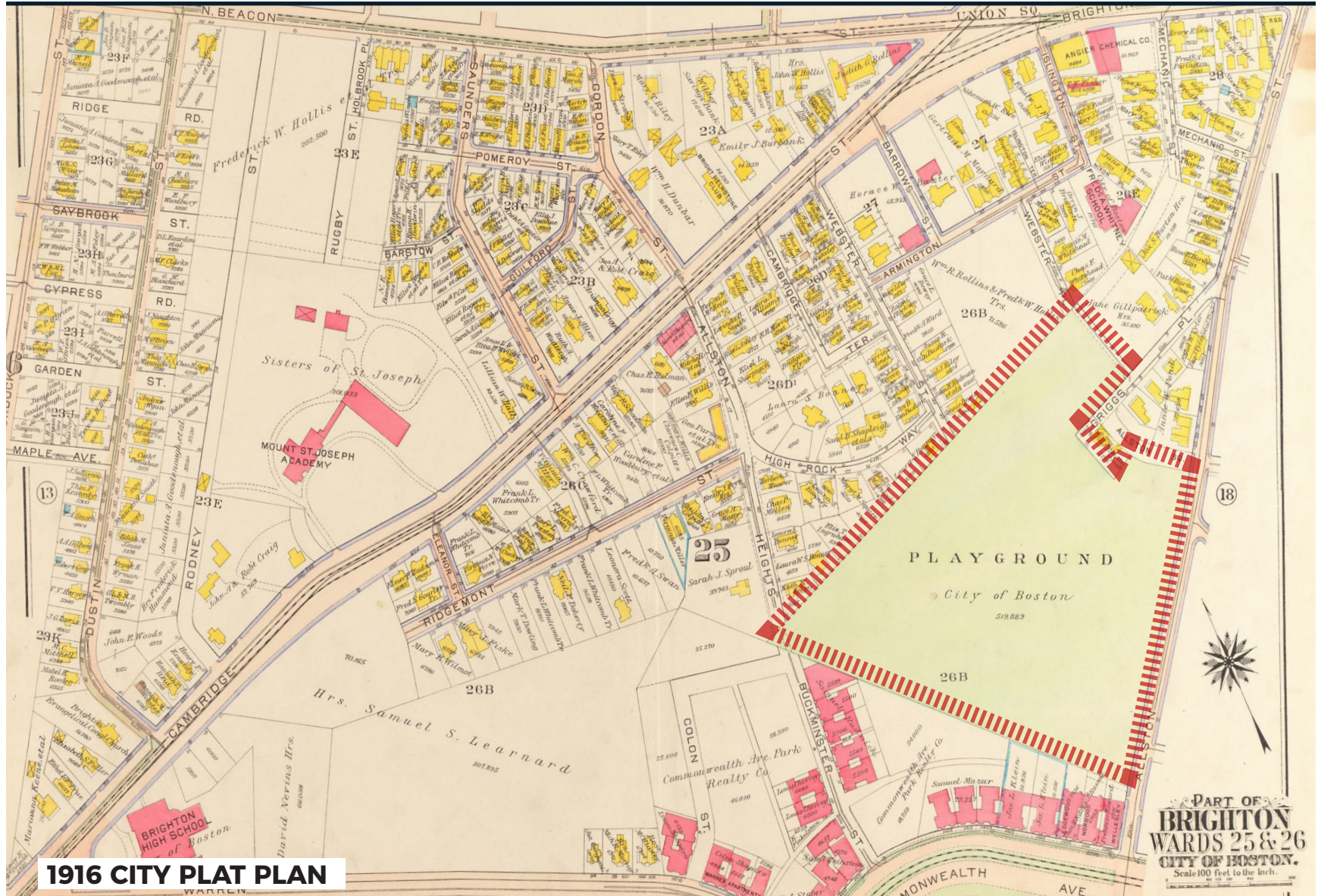


HISTORIC DEVELOPMENT



1875 CITY PLAT PLAN

HISTORIC DEVELOPMENT



HISTORIC DEVELOPMENT



1923:

Survey conducted, park included tennis courts, ball field, field house, swings & flagpole

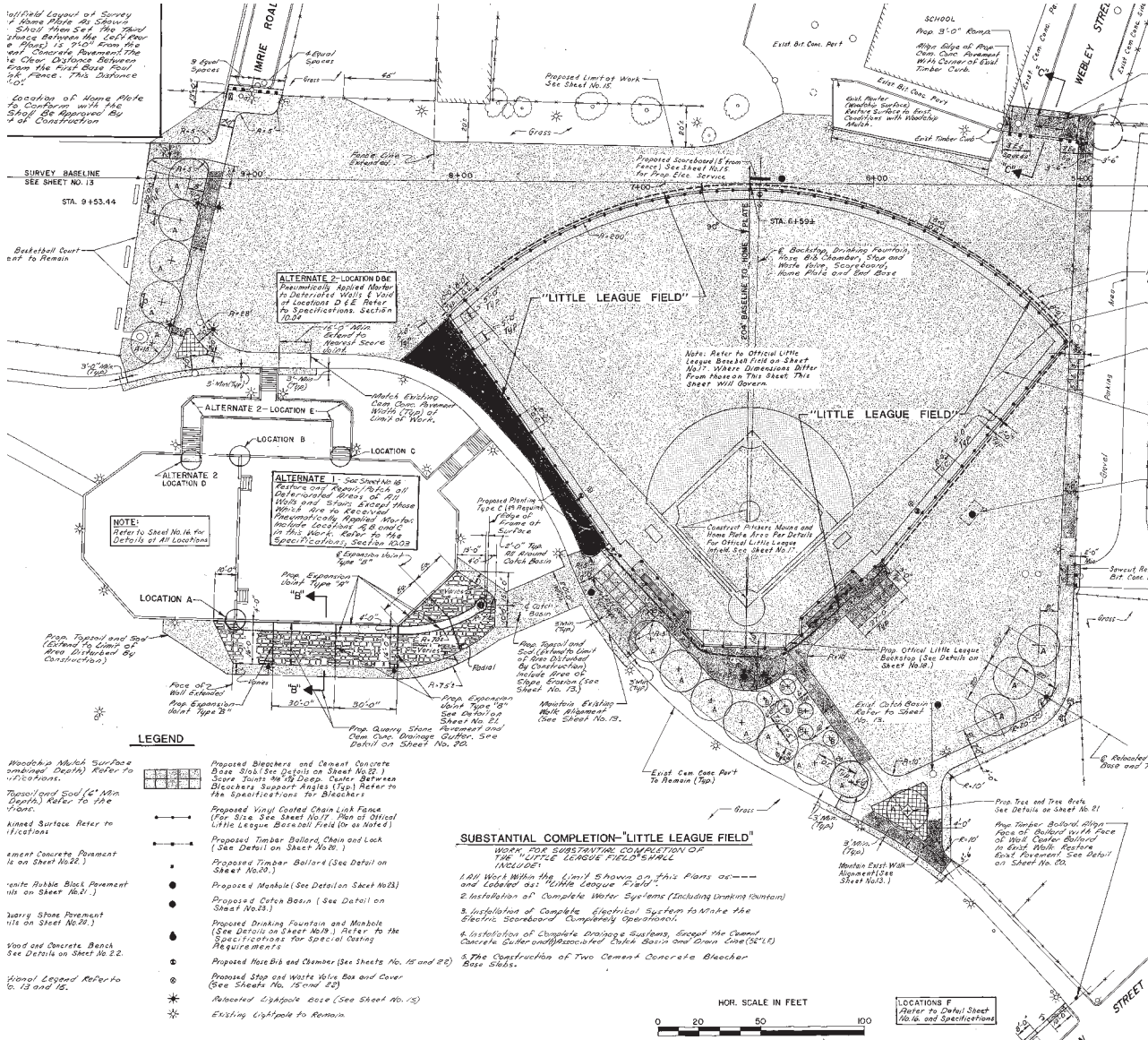
1931:

Park renovated & West End house indicated on plans (see left)

1972:

Renovations to park (basketball courts already replaced 2 tennis courts); field house removed and 2 tot lots added

HISTORIC DEVELOPMENT



1977:
 Major renovation & reorientation of ball field

1988:
 Pathways updated & turnaround added; play space & park entrances renovated

1997:
 Updated to ball fields

2005:
 Significant improvements to play space with new layout & addition of splash pad and ramp for access

SITE VARIETY



PLAYGROUND



STEEP SLOPE



COURTS



WOODS



TREES



BALL FIELD

PARK USE



PARK USE

Basketball courts:

2 courts permitted March - October, 2 days/week

Tennis courts:

2 courts permitted March - August, 5 days/week

Little league field:

Field permitted almost daily, especially in fall



Little League Baseball

Performance space

Basketball

Tennis

Play Area

Passive Use

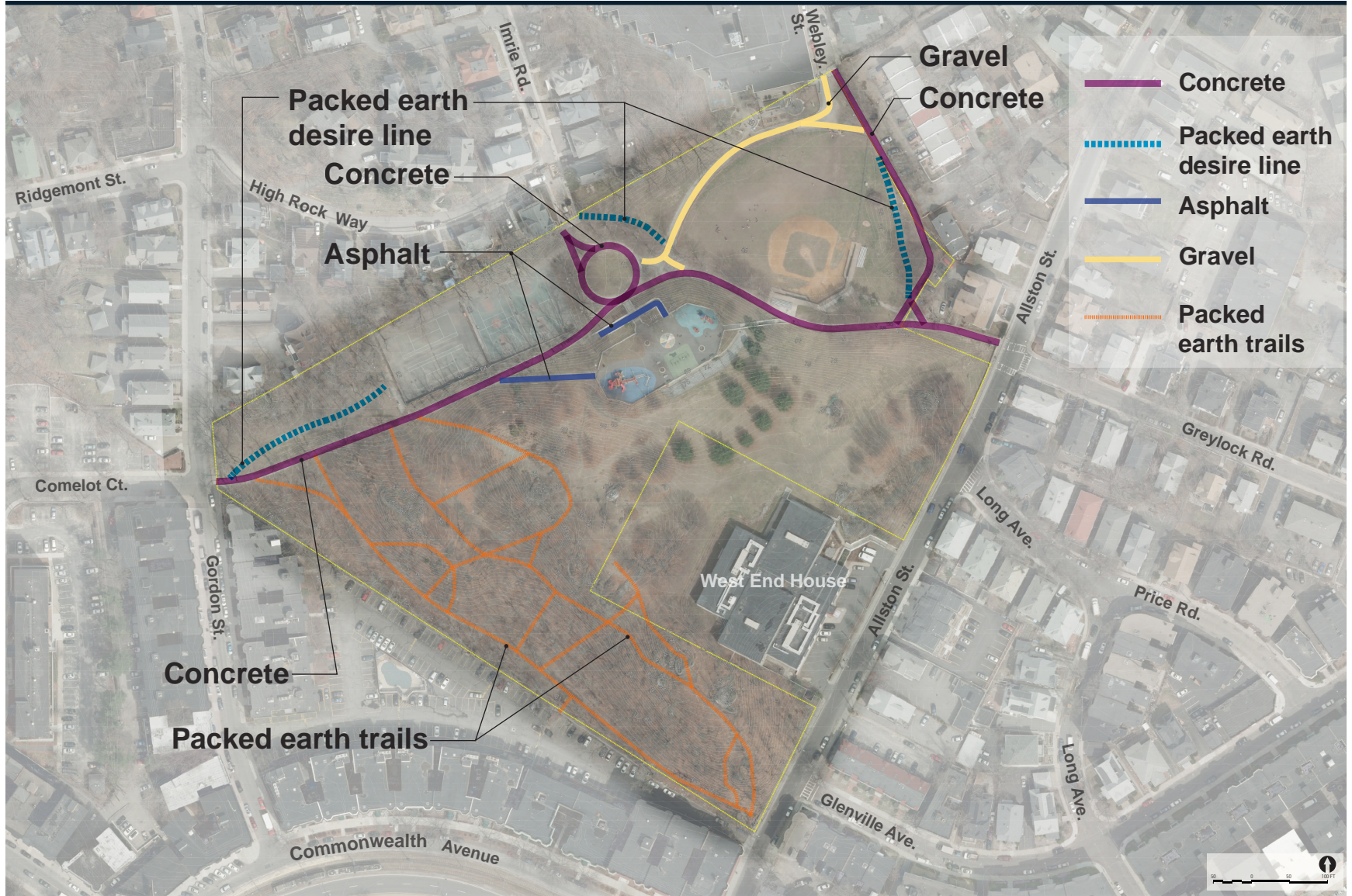
Urban Wild

West End House

Playground & Performance circle:

Varies year to year; most permitted in summer & October

PATHS



PATHS



CONCRETE



ASPHALT



GRAVEL

 **NON-ADA
COMPLIANT
PATHWAY
MATERIAL**

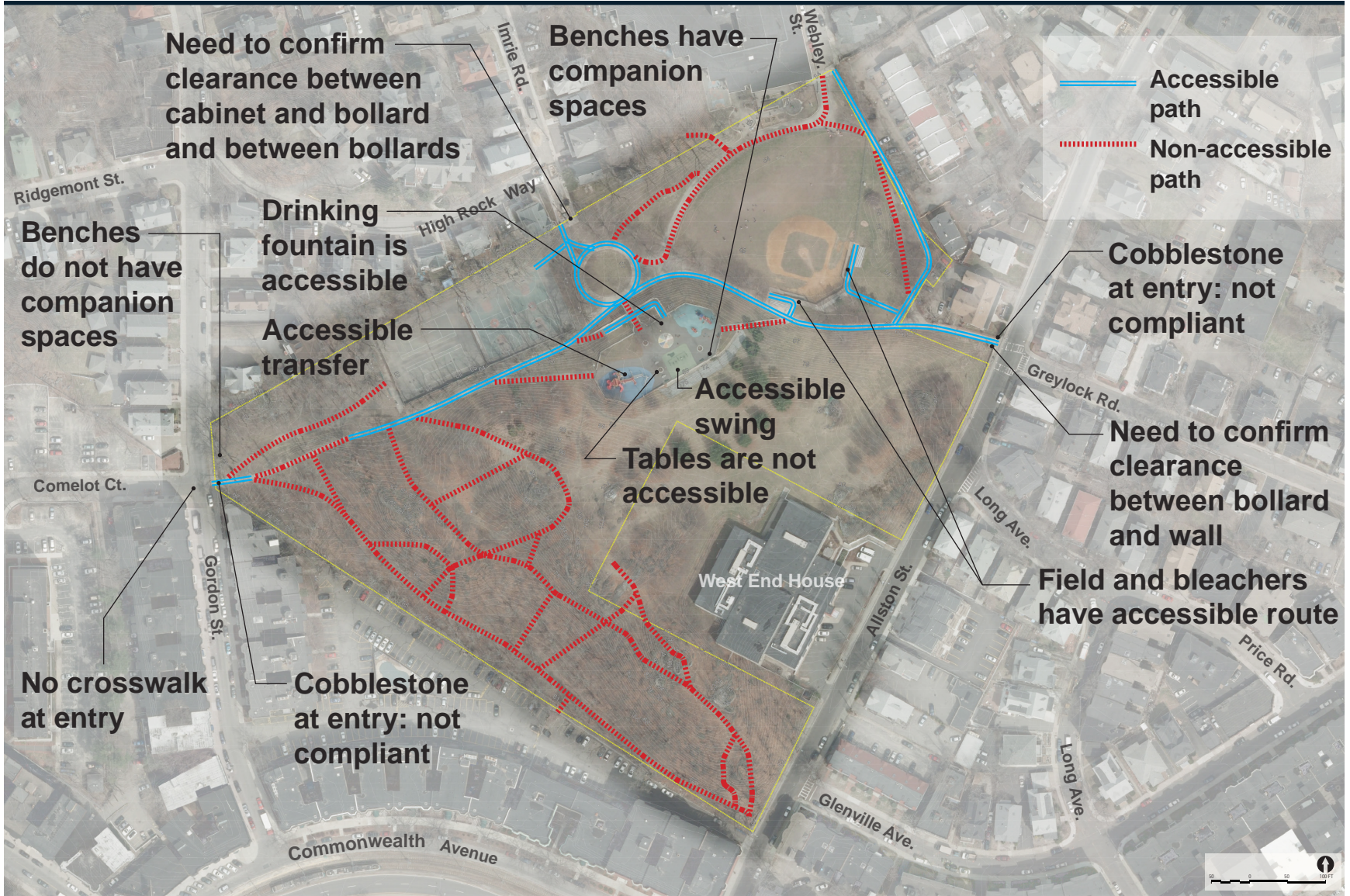


PACKED EARTH DESIRE LINE



PACKED EARTH TRAIL

ACCESSIBILITY



ELEVATION ANALYSIS



SLOPE ANALYSIS



VIEWS



VIEWS



VIEW OF TENNIS COURTS



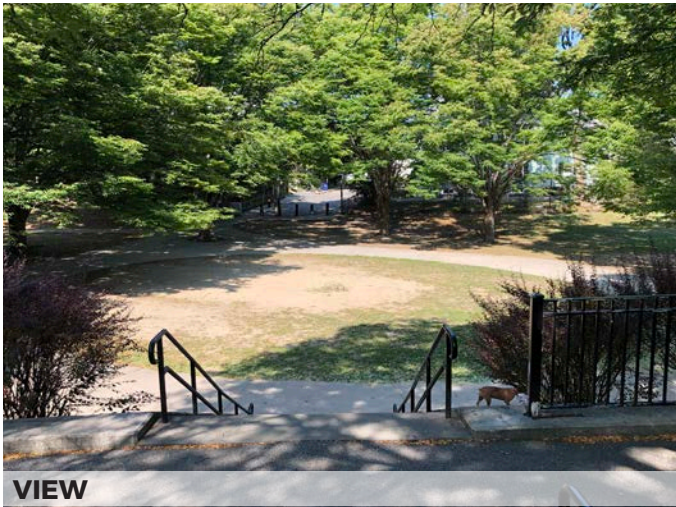
VIEW OF WOODED AREA



VIEW OF BUILDING



SKYLINE VIEW



VIEW

FURNISHINGS



FURNISHINGS



DRINKING FOUNTAIN



DRINKING FOUNTAIN



BENCH



BENCH



BENCH

VEGETATION



PLAY SPACE



PLAYGROUND



TREE WITH TREE GRATE



SWINGS



SPLASH PAD



2-5 PLAY EQUIPMENT



5-12 PLAY EQUIPMENT

URBAN WILD



URBAN WILD



GRAFFITI ON LEDGE



HEAVY TRASH DEPOSITS



GRAFFITI ON LEDGE

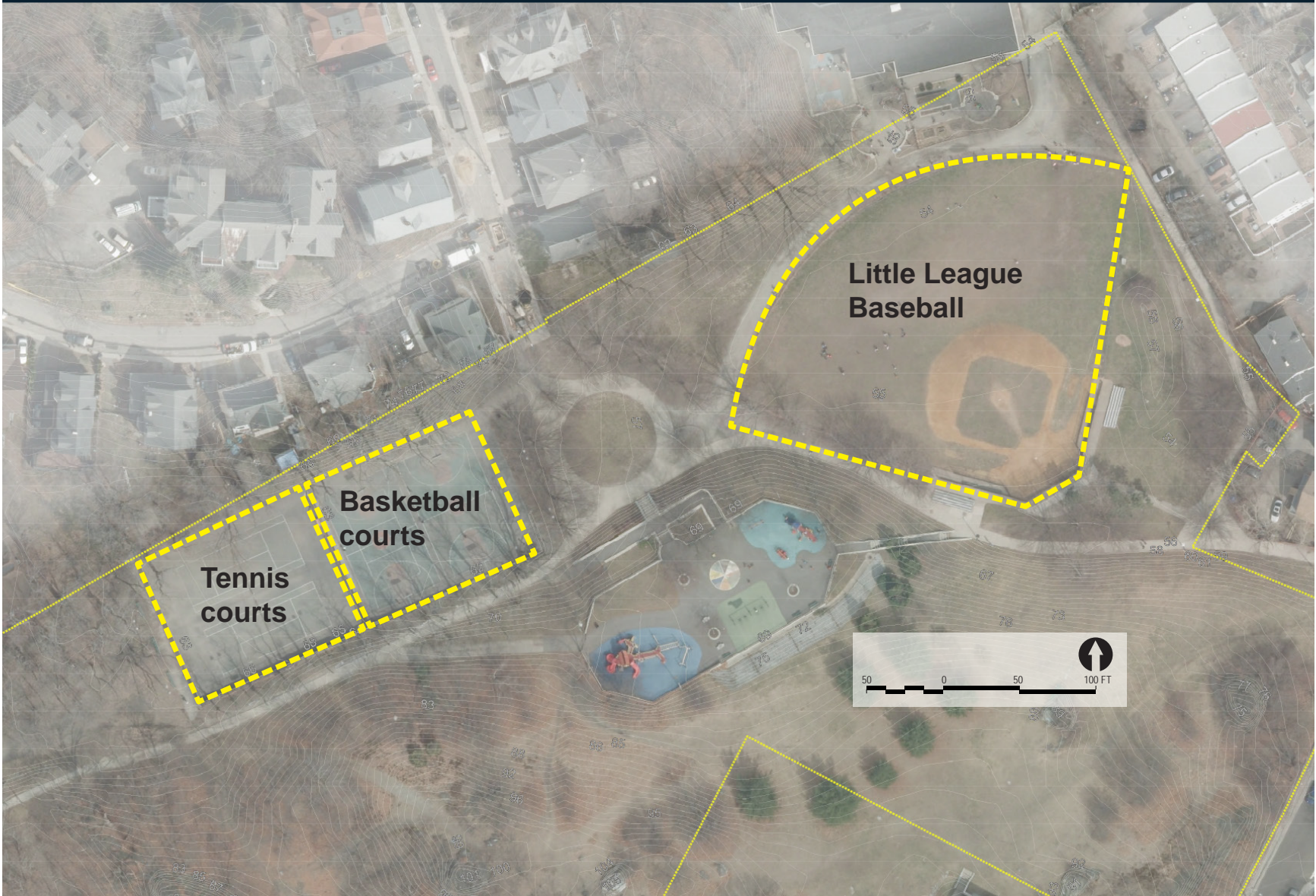


PACKED EARTH TRAIL



HEAVY TRASH DEPOSITS

ATHLETIC FIELD AND COURTS



ATHLETIC FIELD AND COURTS



TENNIS COURT FENCE



BASKETBALL COURTS



TENNIS COURTS



BLEACHERS



BASEBALL FIELD

ENTRANCES



ENTRANCES



ENTRANCE ON WEBLEY ST.



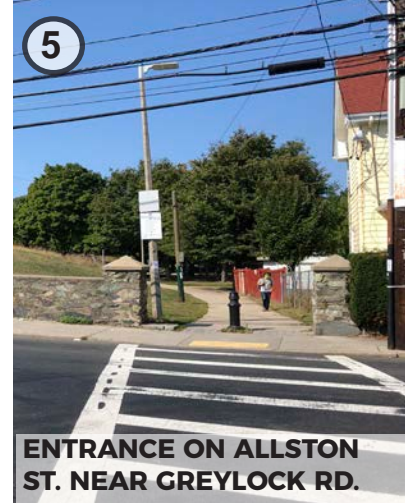
ENTRANCE ON IMRIE RD.



ENTRANCE ON GORDON ST.



ENTRANCE ON ALLSTON ST. NEAR GLENVILLE AVE.



ENTRANCE ON ALLSTON ST. NEAR GREYLOCK RD.

LIGHTING



LIGHTING



LIGHTING FIXTURE AND EMERGENCY TELEPHONE



NIGHT VIEW AT BALL FIELD



NIGHT VIEW APPROACHING COURTS



NIGHT VIEW APPROACHING PLAYGROUND



NIGHT VIEW AT COURTS



NIGHT VIEW AT BLEACHERS



NIGHT VIEW AT PATH

LIGHTING



**NIGHT VIEW AT PATH APPROACHING
PLAYGROUND**



**NIGHT VIEW AT
PLAYGROUND**



NIGHT VIEW AT PLAYGROUND



**NIGHT VIEW AT ENTRANCE ON ALLSTON ST. NEAR
GREYLOCK RD.**



**NIGHT VIEW AT ENTRANCE ON
ALLSTON ST. NEAR GLENVILLE AVE.**



LISTENING & DISCUSSION

Help us build great parks.

Let us know what matters to you.



Group Agreements for a **Fair, Productive Conversation**

- Be respectful and use respectful language
- Share airtime so everyone gets a chance to be heard
- If you disagree, consider asking a question rather than arguing to prove your point
- It's OK to disagree but don't personalize it. Focus on the idea, not the person.
- Speak up if the process doesn't seem fair
- If you talk about people who are not here, don't use their names
- Speak for yourself, not the group.
- We all share responsibility for making the group productive
- Listen to each other

NEXT STEPS

ON-LINE SURVEY

WEB LINK:

<https://www.surveymonkey.com/r/ringermpl>

Scan me with your phone's camera!



PARK DROP-IN

SATURDAY, OCTOBER 24TH 10 AM-12 PM

NEXT PUBLIC MEETING (WINTER)

VISIT PROJECT WEBSITE

WEB LINK:

<https://www.boston.gov/departments/parks-and-recreation/ringer-park-improvements>

Scan me with your phone's camera!



RINGER PARK COMPREHENSIVE PLAN



RINGER PARK COMPREHENSIVE PLAN





THANK YOU!

See the project website for future updates.

For questions, maintenance requests or
concerns regarding any of our
parks contact 311

