

landscape architecture

urban design

master planning

CBA | Landscape Architects LLC

REDESIGN OF COPPENS SQUARE

DORCHESTER, BOSTON, MA

Meeting #4

March 2, 2017

COPPENS SQUARE Meeting Agenda

Introductions: Ed Cook, Friends of Coppens Square

Presentation: Clara Batchelor & Megan Tomkins,
CBA Landscape Architects, LLC

Agenda:

- Schematic Design
- Site Furniture
- Recommended Planting
- Future Timeline



COPPENS SQUARE Project Milestones

- ***Friends of Coppens Square Meeting 1 (November 21, 2016 at 6:00 PM):*** CBA met with the Friends of Coppens Square and presented Site Analysis and Precedents, gathered input, discussed program elements, and discussed preliminary Schematic Designs.
- ***“Public” Meeting 2 (January 30, 2017 at 6:00 PM):*** FOCS and CBA presented an overview to introduce project to the public, including history of existing fountain and site. CBA presented “Feature” Type Alternatives – Fountain or Sculpture, Traditional or Contemporary. The community commented and discussed, and indicating Preferred Feature Type via stickers. FOCS then met in the interim without CBA to discuss and finalize the preferred Feature Type.
- ***Friends of Coppens Square Meeting 3 (February 22, 2017; 6:30 PM):*** CBA to present 3 options for Coppens Square showing different locations for the preferred feature. CBA will discuss local reference ideas for the fountain, design wish list for the fountain, and design wish list for other park features. The committee will express preference on the location and CBA will take that direction and develop a Final Illustrative Plan.
- ***Friends of Coppens Square Meeting 4 (March 2, 2017; 6:00 PM):*** CBA to present Final Illustrative Design for park including fountain type, site furnishings, lighting, planting, and a schematic cost estimate. CBA will review this plan with committee and will incorporate any changes from the discussion at this meeting into the final plan. CBA will then provide a final plan that the committee can use to secure funding and move the park forward.
- ***Construction Documents and Construction Start (Future – TBD, depending on availability of funding)***

EXISTING CONDITIONS Coppens Square Fountain



Photo Source: (Left) CBA, (Right) Urban Culture Institute Website

EXISTING CONDITIONS Coppens Square Plaza



Photo Source: Urban Culture Institute Website

HISTORIC IMAGES Original Fountain

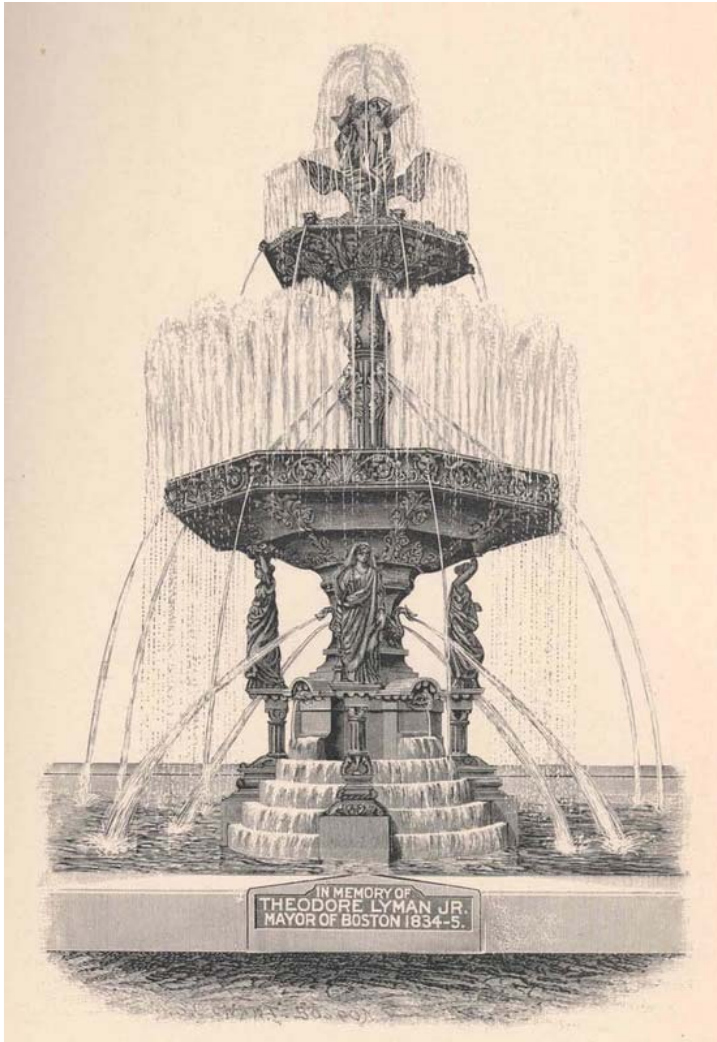
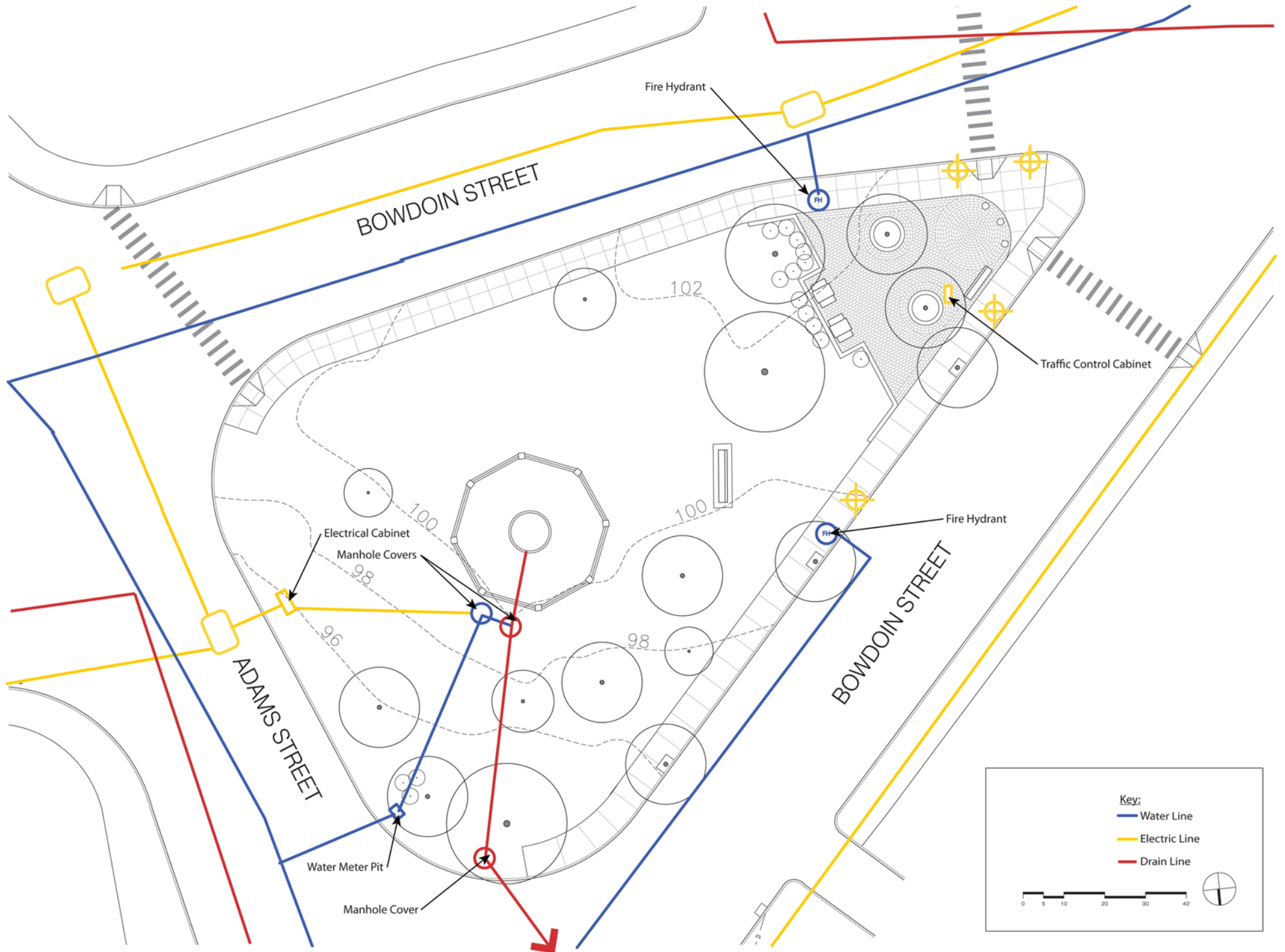


Image Source: (Left) Urban Culture Institute/Ed Cook, (Right) dotmass.blogspot.com

REDESIGN OF COPPENS SQUARE
EXISTING UTILITIES



COPPENS SQUARE Utility Lines and Structures



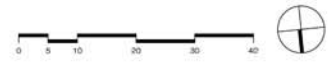
REDESIGN OF COPPENS SQUARE
**PROPOSED SCHEMATIC
DESIGN**





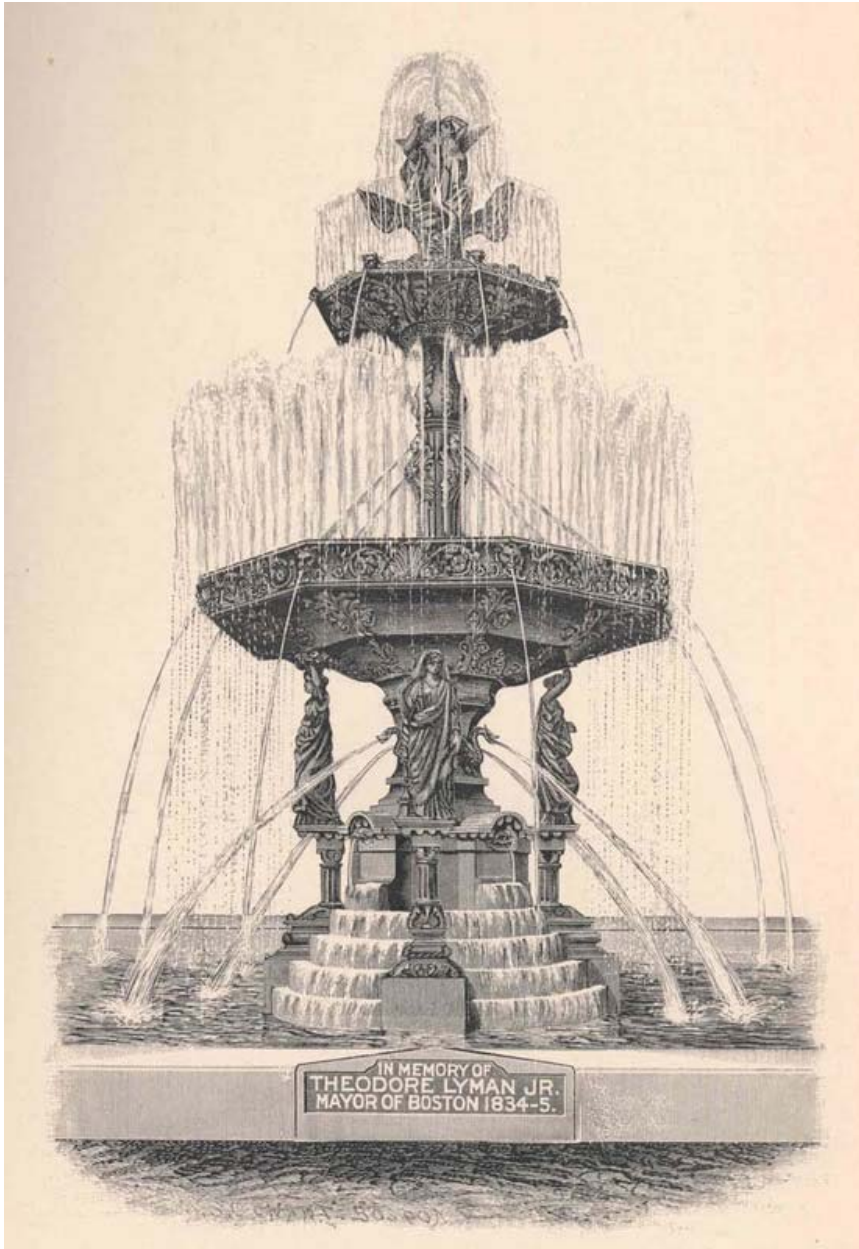
COPPENS SQUARE
 Dorchester, MA
 SCHEMATIC DESIGN

DATE:	02-24-2017
SCALE:	1" = 10' - 0"
FILE:	Coppens-Base.dwg
DWN BY:	AJK
OXD BY:	MNT
PROJ. #:	#####

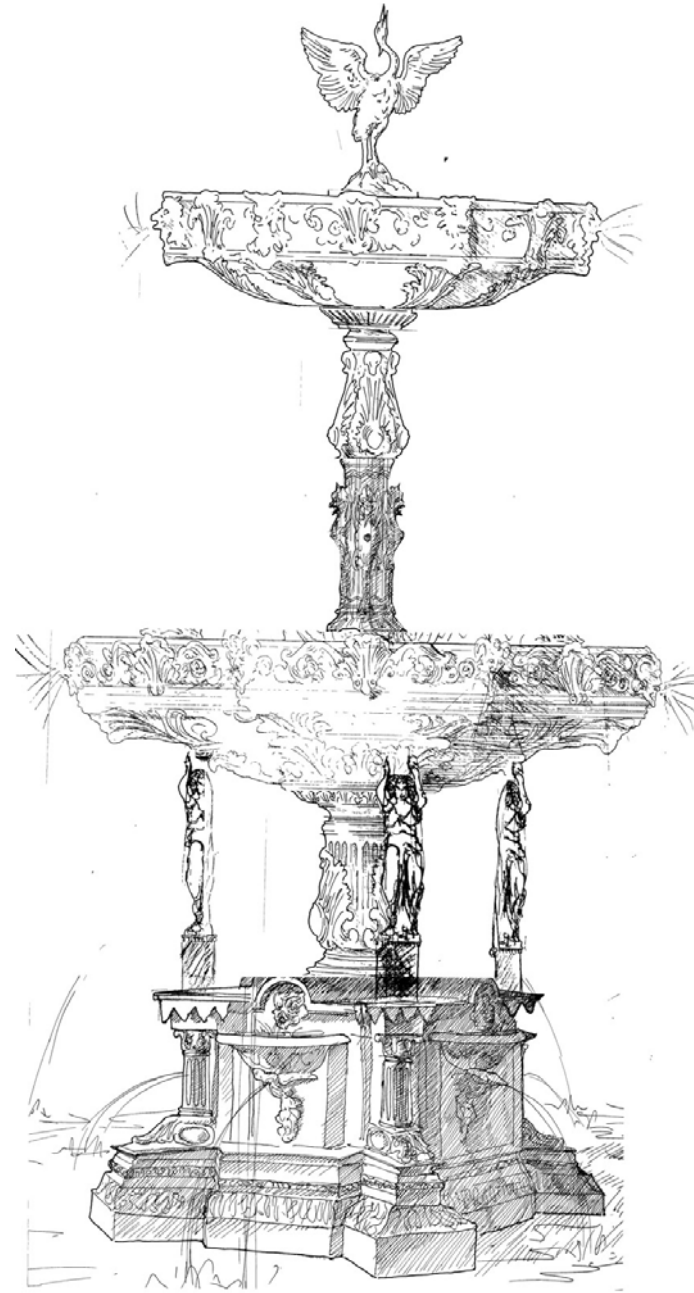


SD

New Fountain: Comparison with Original



Original Fountain



Sketch of Proposed Fountain

Image Source: (Left) Urban Culture Institute/Ed Cook, (Right) Robinson Iron Works

New Fountain: Comparison Images



Original Fountain



Image of Leda with Swan

Image Source: (Left) Urban Culture Institute/Ed Cook, (Right) Robinson Iron Works

New Fountain: Comparison Images



Original Fountain



Image of Lady with Vase

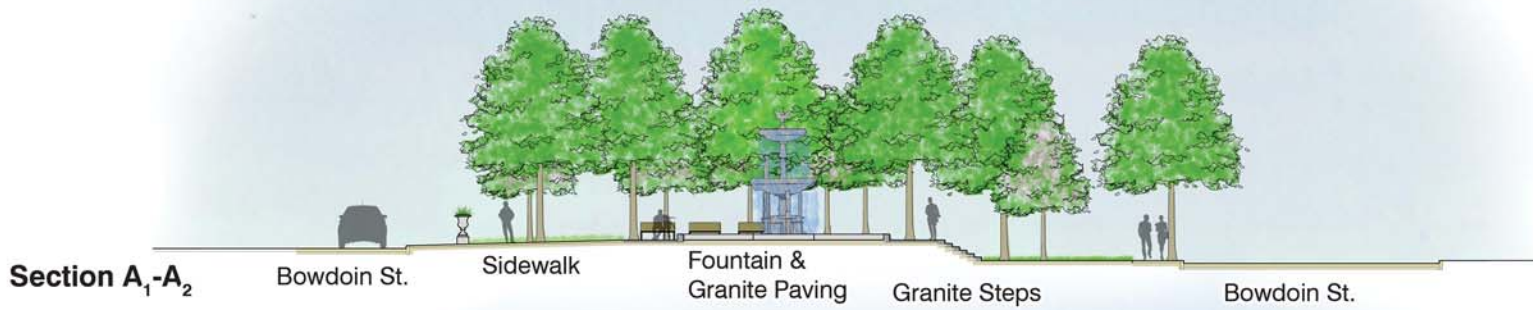
Image Source: (Left) Urban Culture Institute/Ed Cook, (Right) Robinson Iron Works



COPPENS SQUARE
 Dorchester, MA
 SCHEMATIC DESIGN

DATE:	02-24-2017
SCALE:	1" = 10'-0"
FILE:	Coppens-Base.dwg
DWN BY:	AJK
CRD BY:	MNT
PROJ. #:	*****

SD



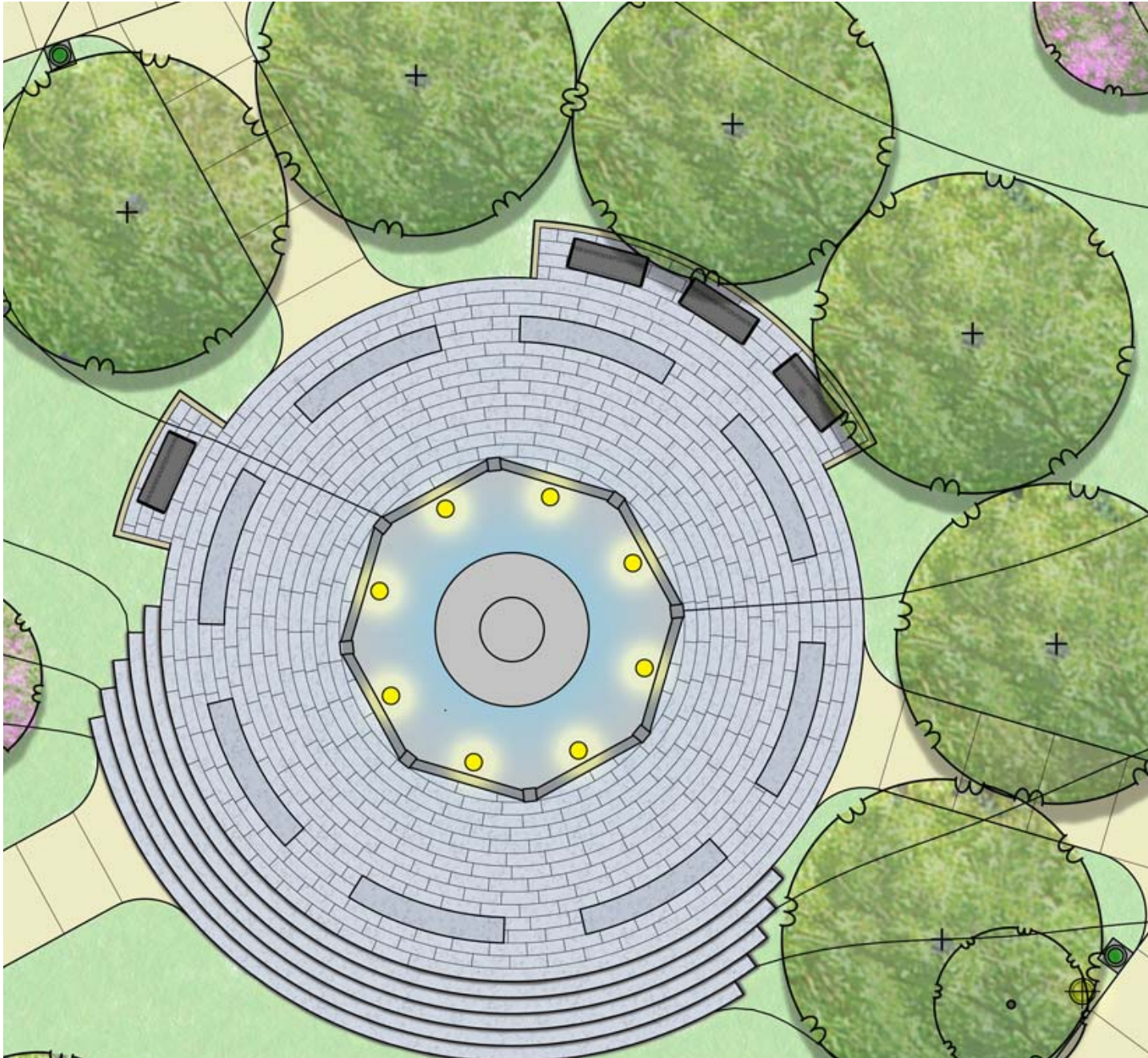
REDESIGN OF COPPENS SQUARE

HISTORICAL REFERENCES

- Celebration of water (use only a reference to Theodore Lyman who brought public water to Boston, rather than commemorating him as a person because he is controversial)
- Trade unions as they have a strong presence in Dorchester
- Diverse community and various waves of immigration over time
- Children, since they are in the neighborhood and at the Mather School
- Abolitionist movement was very strong
- Lucy Stone, Dorchester resident, started the Women Suffrage movement
- Meeting House Hill is where Dorchester started
- Many historic homes and the 2 churches, First Parish and St. Peter's, are abutters

REDESIGN OF COPPENS SQUARE

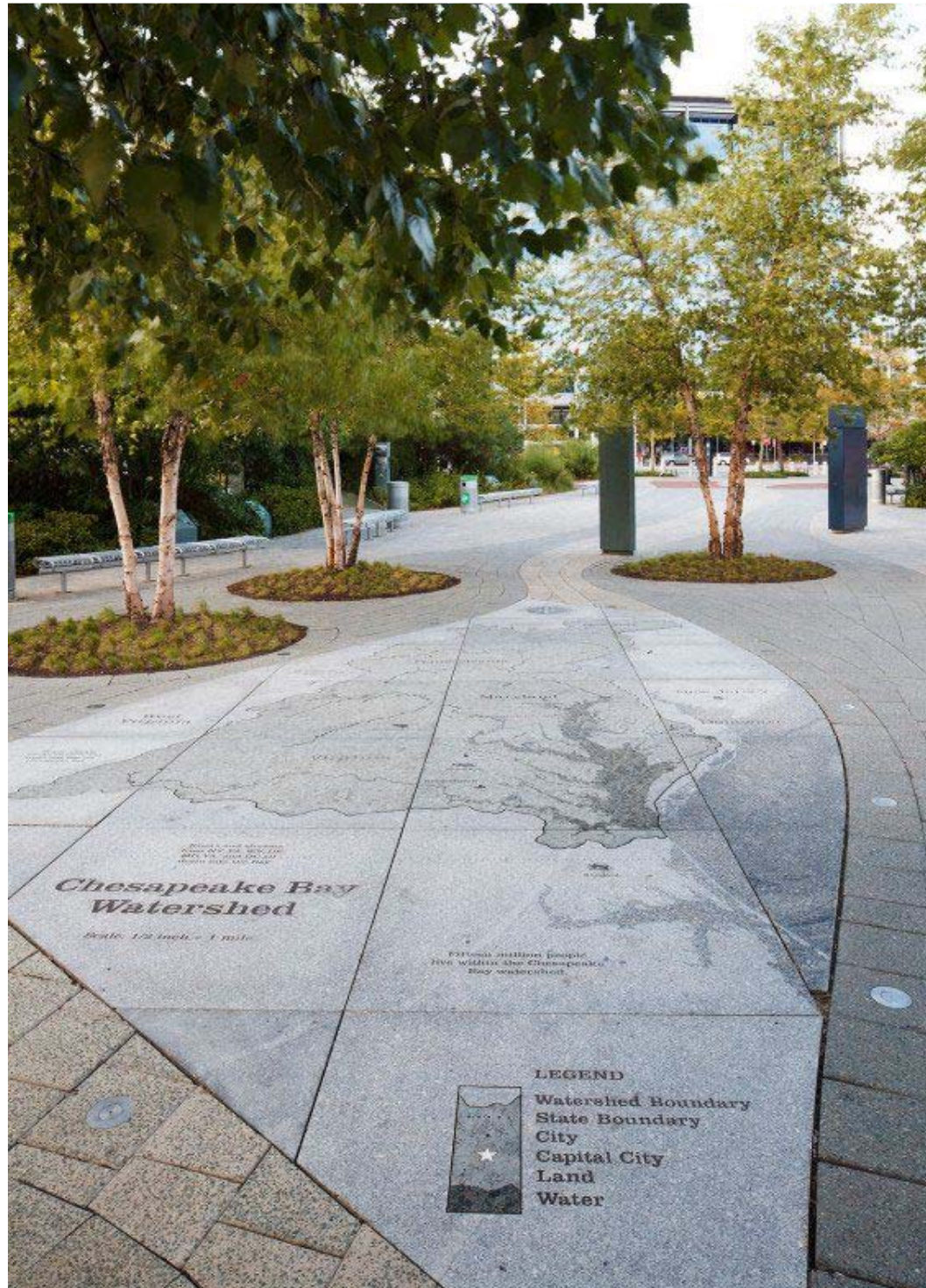
HISTORICAL REFERENCES



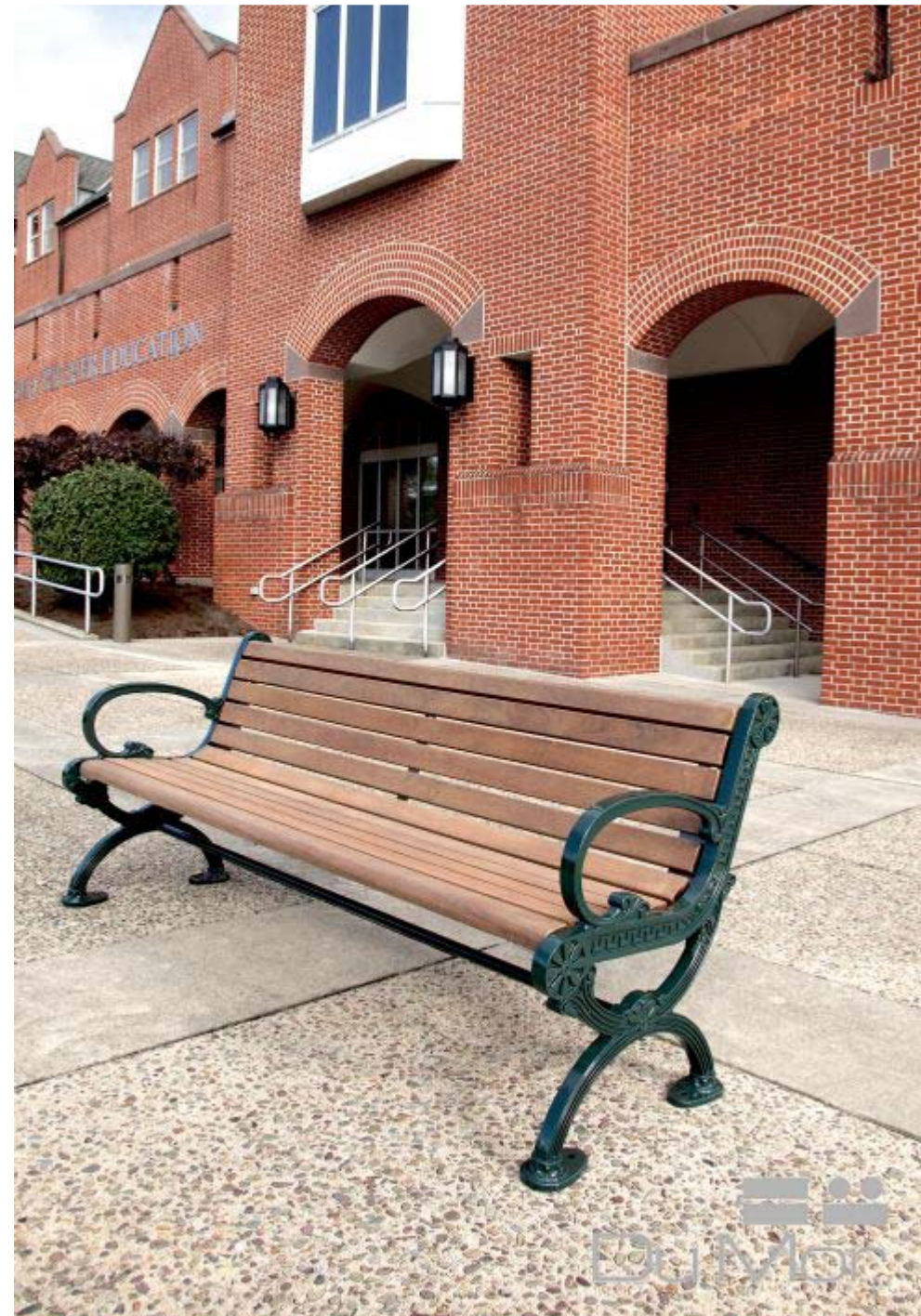
DR. LOESCH FAMILY PARK JUMP ROPE, Dorchester, Boston



PAVEMENT - INTERPRETIVE MAP



HISTORIC TYPE LIGHTPOLES, BENCH, & BPRD TRASH RECEPTACLE



Fountain and Urn Colors

Gloss White



Charleston Green



Verde Gris



Gloss Black



Pompeiiian Green



Colors

Fountains receive a coat of zinc-rich primer. Over this initial coating they and all other pieces receive a two component epoxy primer. A finish of acrylic polyurethane is then applied. Any color can be matched to another manufacturer's color number, a munsell number, or a color swatch. Special finish requests may incur additional charges.



IDEAS FOR PLANTING NATURALIZED BULBS IN LAWN



IDEAS FOR PLANTING SHADE TREES



IDEAS FOR PLANTING FLOWERING TREES



IDEAS FOR PLANTING

Ornamental Grasses for Urns



COMMENTS AND DISCUSSION