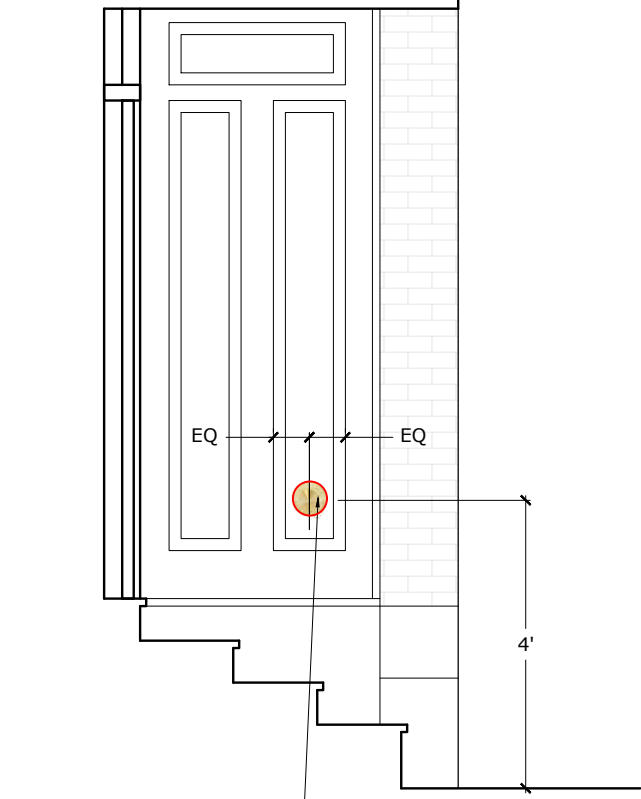
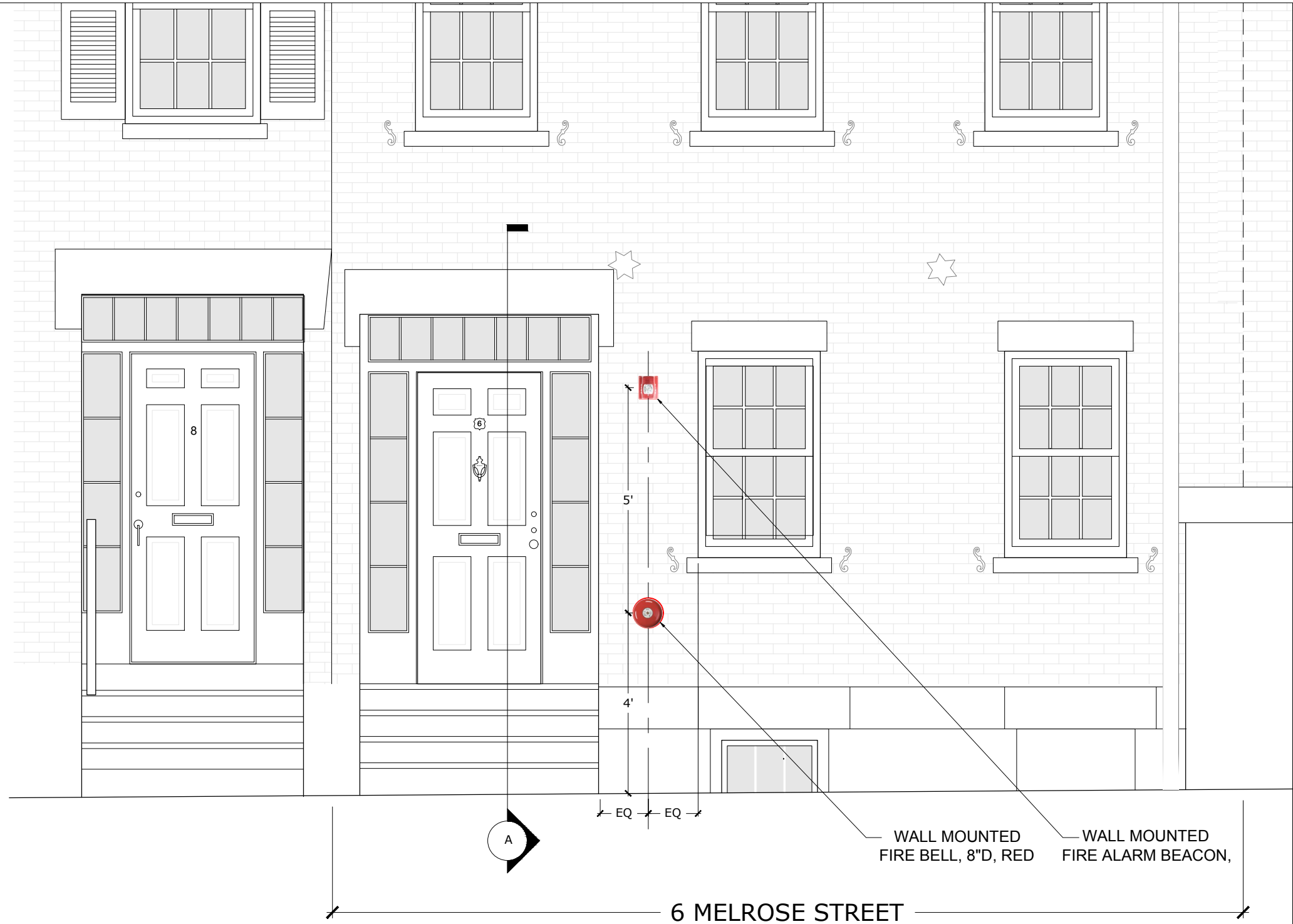


6 MELROSE STREET
BOSTON, MA 02116



FDC SINGLE 2-1/2"
COMPLETE W/
PLATE & PLUG, BRASS

A SECTION @
FRONT STOOP
3/8"=1'-0"



B MELROSE STREET, SOUTH ELEVATION
3/8"=1'-0"

WALL MOUNTED
FIRE BELL, 8"D, RED

WALL MOUNTED
FIRE ALARM BEACON,

6 MELROSE STREET

DRAWING NAME:
ELEVATION &
SECTION
LOCATING
FIRE EQUIPMENT

DATE:
JULY 15, 2020

SCALE:
1/4"= 1'-0"

SHEET NUMBER:
a-1

6 MELROSE STREET
BOSTON, MA 02116



EXTERIOR PHOTOS OF 6 MELROSE STREET (PRECONSTRUCTION)

DRAWING NAME:
PHOTOS
OF 6 MELROSE
(PRECONSTRUCTION)

DATE:
JULY 15, 2020

SCALE:

SHEET NUMBER:
a-2

6 MELROSE STREET
BOSTON, MA 02116



PRECEDENT PHOTO OF 11A MELROSE ST AND 15 MELROSE STREET

DRAWING NAME:
PRECEDENT PHOTO

DATE:
JULY 15, 2020

SCALE:

SHEET NUMBER:
a-3

FIRE DEPARTMENT CONNECTION SINGLE INLET



Straight-through, non-clappered design with female outlets
Exposed type for residential "Automatic" sprinkler systems.
2-1/2" (F) outlet x 2-1/2" swivel (F) NST

65-10-202: 2-1/2" SINGLE INLET CONNECTION

2-1/2" (F) outlet x 2-1/2" swivel (F) NST

Finish: rough brass

65-10-202C: 2-1/2" SINGLE INLET CONNECTION COMPLETE

Includes: 2-1/2" plug with chain and 4-7/16" O.D. round wallplate "AUTO SPKR"

Finish: rough brass

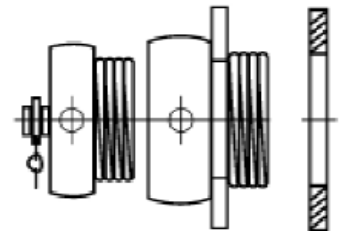
65-10-202CP: 2-1/2" SINGLE INLET CONNECTION (Chrome Plated)

2-1/2" (F) outlet x 2-1/2" swivel (F) NST

65-10-202C-CP: 2-1/2" SINGLE INLET CONNECTION COMPLETE (Chrome Plated)

Includes: 2-1/2" plug with chain and 4-7/16" O.D. round wallplate "AUTO SPKR"

Finish: Chrome Plated Brass



The information contained herein is produced in good faith and is believed to be reliable but is for guidance only. ARGCO and its agents cannot assume liability or responsibility for results obtained in the use of its product by persons whose methods are outside or beyond our control. It is the user's responsibility to determine the suitability of any of the products, methods of use, or preparation prior to use, mentioned in our literature. It is the user's responsibility to observe and adapt such precautions as may be advisable for the protection of personnel and property in the handling and use of any of our products.

**FOR MORE INFORMATION CALL ARGCO AT 1-800-854-1015
OR LOG ONTO WWW.ARGCO.COM**



SSM/SSV Series Alarm Bells

System Sensor's SSM and SSV series alarm bells are low current, high decibel notification appliances for use in fire and burglary systems or other signaling applications.



Features

- Approved for indoor and outdoor use
- Low current draw
- High dB output
- Available in six-inch, eight-inch, and ten-inch sizes
- AC and DC models
- DC models polarized for use with supervision circuitry
- Mount directly to standard four-inch square electrical box indoors
- SSM and SSV series come pre-wired

Reliable Performance. The SSM and SSV series provide loud resonant tones. The SSM series operates on 24VDC and are motor driven, while the SSV series operates on 120VAC utilizing a vibrating mechanism.

Simplified Installation. For indoor use, the SSM and SSV series mount to a standard four-inch square electrical box. For outdoor applications, weatherproof back box, model number WBB, is used.

The SSM and SSV series come pre-wired, to reduce installation time. The SSM series incorporates a polarized electrical design for use with supervision circuitry.

Agency Listings



SSM/SSV Specifications

Architectural/Engineering Specifications

Model shall be a SSM or SSV Series alarm bell. Bells shall have underdome strikers and operating mechanisms. Gongs on said bells shall be no smaller than nominal 6”/8”/10” (specify size) with an operating voltage of 24VDC or 120VAC (specify by part number). Bells shall be suitable for surface or semi-flush mounting. Outdoor surface mounted installations shall be weatherproof (using optional WBB weatherproof electrical box). Otherwise bells shall mount to a standard 4” square electrical box having a maximum projection of 2½”. Bells shall be located as shown on the drawings or as determined by the Authority Having Jurisdiction. Bells shall be listed for indoor/outdoor use by Underwriters Laboratories and the California State Fire Marshal, and approved by Factory Mutual and MEA.

Physical/Operating Specifications

Operating Temperature Range -31°F to 140°F

Operating Voltage SSM series: 24 VDC
SSV series: 120 VAC

Termination Provided with 2 sets of leads for in/out wiring

Service Use Fire Alarm, General Signaling, Burglar Alarm

Warranty 3 years

Electrical Specifications

Model	Gong Diameter (inches)	Nominal Voltage	Operating Voltage Limit	Maximum Current	Sound Output (dBA)
SSM24-6	6	Regulated 24VDC	16 to 33VDC	DC-31.1mA/ FWR-53.5mA	82
SSM24-8	8	Regulated 24VDC	16 to 33VDC	DC-31.1mA/ FWR-53.5mA	80
SSM24-10	10	Regulated 24VDC	16 to 33VDC	DC-31.1mA/ FWR-53.5mA	81
SSV120-6	6	Regulated 120VAC	96 to 132VAC	53mA	85
SSV120-8	8	Regulated 120VAC	96 to 132VAC	53mA	82
SSV120-10	10	Regulated 120VAC	96 to 132VAC	53mA	82

* Sound output measured at Underwriter Laboratories, as specified in UL464

Ordering Information

UL/FM Model No.	ULC/Canadian Model No.	Description
SSM24-6	SSM24-6A	Bell, 6”, 24VDC, Polarized, 82dBA
SSM24-8	SSM24-8A	Bell, 8”, 24VDC, Polarized, 80dBA
SSM24-10	SSM24-10A	Bell, 10”, 24VDC, Polarized, 81dBA
SSV120-6	SSV120-6A	Bell, 6”, 120VAC, 85dBA
SSV120-8	SSV120-8A	Bell, 8”, 120VAC, 82dBA
SSV120-10	SSV120-10A	Bell, 10”, 120VAC, 82dBA
WBB		Weatherproof back box for SSM and SSV series, when installed outdoors



3825 Ohio Avenue • St. Charles, IL 60174
Phone: 800-SENSOR2 • Fax: 630-377-6495
www.systemsensor.com

©2012 System Sensor.
Product specifications subject to change without notice. Visit systemsensor.com
for current product information, including the latest version of this data sheet.
WFDS74501 • 3/12



Outdoor Selectable-Output Horns, Strobes, and Horn Strobes

SpectrAlert® Advance outdoor selectable-output horns, strobes, and horn strobes are rich with features that cut installation times and maximize profits.



Features

- Automatic selection of 12- or 24-volt operation at 15 and 15/75 candela
- Field-selectable candela settings on wall and ceiling units: 15, 15/75, 30, 75, 95, 110, 115, 135, 150, 177, and 185
- Plug-in design with minimal intrusion into the back box
- Tamper-resistant construction
- Universal mounting plate for wall- and ceiling-mount units
- Mounting plate shorting spring tests wiring continuity before devices are installed
- Weatherproof per NEMA 4X, IP56
- Listed to UL 1638 (strobe) and UL 464 (horn)
- Rated from -40°F to 151°F
- Horn rated at 88+ dBA at 16 volts
- Rotary switch for horn tone and three volume selections
- Compatible with System Sensor synchronization protocol and legacy SpectrAlert products

The **SpectrAlert Advance** series offers the broadest line of outdoor horns, strobes, and horn strobes in the industry. With white and red plastic housings, wall and ceiling mounting options, and plain and FIRE-printed devices, SpectrAlert Advance can meet virtually any application requirement.

SpectrAlert Advance outdoor horns, strobes, and horn strobes can be used indoors or outdoors in wet or dry applications, and can provide reliable operation from -40°F to 151°F.

Like the entire SpectrAlert Advance product line, these devices include a variety of features that increase their application versatility while simplifying installation. All devices feature plug-in designs with minimal intrusion into the back box, which make installations fast and foolproof while virtually eliminating costly and time-consuming ground faults.

All horns, strobes, and horn strobes use a universal mounting plate with an onboard shorting spring that tests wiring continuity before the device is installed, protecting devices from damage. In addition, field-selectable candela settings, automatic selection of 12- or 24-volt operation, and a rotary switch for horn tones with three volume selections enables installers to easily adapt devices to suit a wide range of application requirements.

Agency Listings



S4011 (chimes, horn strobes, horns)
S3593 (outdoor and alert strobes)



ME4452-05-E



7300-1653:187 (outdoor strobes)
7125-1653:188 (horn strobes,
chime strobes)
7135-1653:189 (horns, chimes)