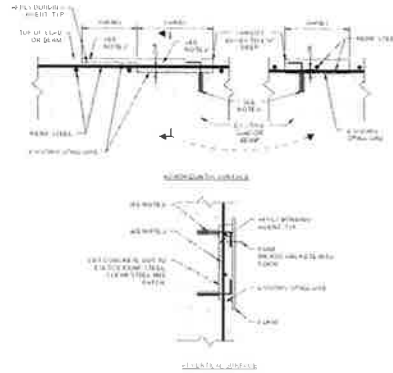


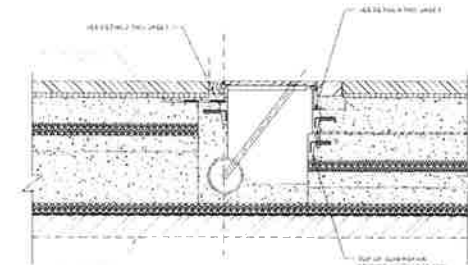
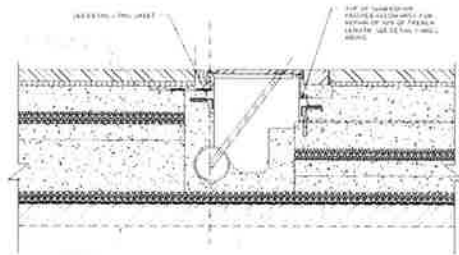
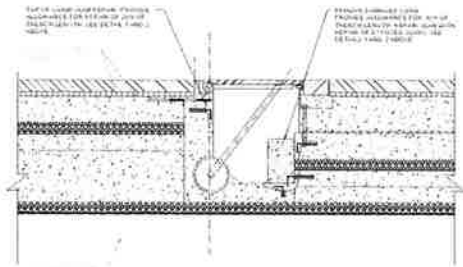
1. REMOVE EXISTING CONCRETE SPALLS AND EXPOSE THE UNDERLYING REINFORCING STEEL.
2. WEDGE REINFORCING STEEL TO MAINTAIN ORIGINAL POSITION AND PROTECT FROM DAMAGE.
3. FORM CONCRETE SPALLS TO MATCH EXISTING SURFACE AND FINISH WITH FINISH.
4. POUR AND FINISH CONCRETE SPALLS TO MATCH EXISTING SURFACE AND FINISH WITH FINISH.



1. REMOVE EXISTING CONCRETE SPALLS AND EXPOSE THE UNDERLYING REINFORCING STEEL.
2. WEDGE REINFORCING STEEL TO MAINTAIN ORIGINAL POSITION AND PROTECT FROM DAMAGE.
3. FORM CONCRETE SPALLS TO MATCH EXISTING SURFACE AND FINISH WITH FINISH.
4. POUR AND FINISH CONCRETE SPALLS TO MATCH EXISTING SURFACE AND FINISH WITH FINISH.
5. REMOVE EXISTING CONCRETE SPALLS AND EXPOSE THE UNDERLYING REINFORCING STEEL.
6. WEDGE REINFORCING STEEL TO MAINTAIN ORIGINAL POSITION AND PROTECT FROM DAMAGE.
7. FORM CONCRETE SPALLS TO MATCH EXISTING SURFACE AND FINISH WITH FINISH.
8. POUR AND FINISH CONCRETE SPALLS TO MATCH EXISTING SURFACE AND FINISH WITH FINISH.
9. REMOVE EXISTING CONCRETE SPALLS AND EXPOSE THE UNDERLYING REINFORCING STEEL.
10. WEDGE REINFORCING STEEL TO MAINTAIN ORIGINAL POSITION AND PROTECT FROM DAMAGE.
11. FORM CONCRETE SPALLS TO MATCH EXISTING SURFACE AND FINISH WITH FINISH.
12. POUR AND FINISH CONCRETE SPALLS TO MATCH EXISTING SURFACE AND FINISH WITH FINISH.
13. REMOVE EXISTING CONCRETE SPALLS AND EXPOSE THE UNDERLYING REINFORCING STEEL.
14. WEDGE REINFORCING STEEL TO MAINTAIN ORIGINAL POSITION AND PROTECT FROM DAMAGE.
15. FORM CONCRETE SPALLS TO MATCH EXISTING SURFACE AND FINISH WITH FINISH.
16. POUR AND FINISH CONCRETE SPALLS TO MATCH EXISTING SURFACE AND FINISH WITH FINISH.

1 SPALL REPAIR CONFIGURATIONS

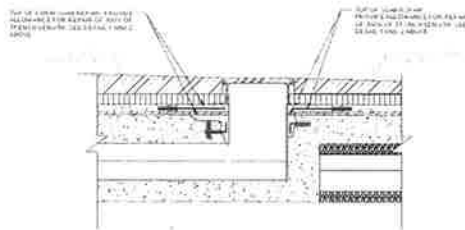
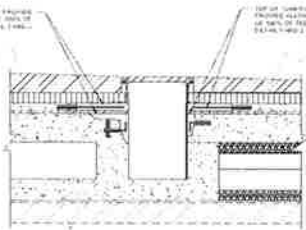
2 TYPICAL CONCRETE REPAIR



3 TYPICAL SECTION AT OUTER TROUGH AT CURB REMOVAL

4 TYPICAL SECTION AT OUTER TROUGH AT CURB TO REMAIN

5 TYPICAL SECTION AT OUTER TROUGH WITHOUT CURB



6 TYPICAL SECTION AT INNER TROUGH

7 TYPICAL SECTION AT INNER TROUGH RETURN

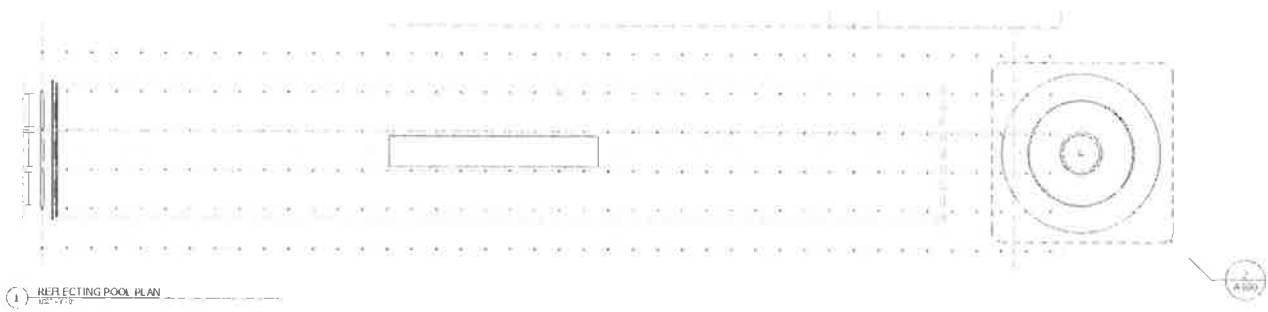
Dedham, MA

The First Church of Christ, Scientist
 Church Edifice

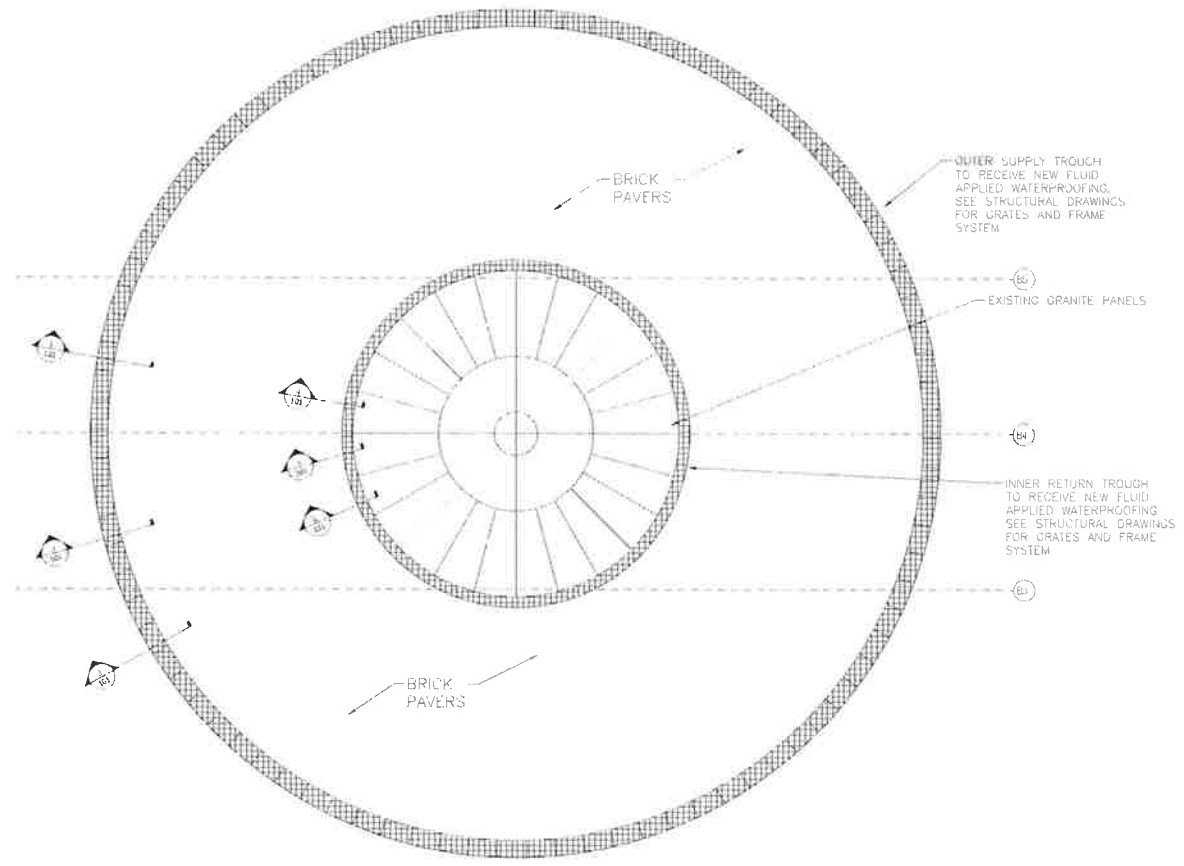
270 Marlborough Street, Boston, MA 02115
 www.fccs.org

LeMessurier

1500 SOLICITERS FIELD ROAD
 WESTON, MA 02459
 857.964.1200
 WWW.LEMESSURIER.COM



1 REFLECTING POOL PLAN
 02/17/18



2 FOUNTAIN PLAN
 02/17/18

NO.	DATE	DESCRIPTION
1	02/17/18	ISSUED FOR PERMIT
2	02/17/18	ISSUED FOR CONSTRUCTION
3	02/17/18	ISSUED FOR RECORD









DeAngelis Iron Work, Inc.
 PO Box 350
 305 Depot Street
 South Easton, MA 02375
 t: 508.238.4310
 f: 508.238.7757
 www.deangelisiron.com

LETTER OF TRANSMITTAL

DATE	1/15/2020	JOB#	11745
ATTENTION	Ed Fontaine		
RE	FCCS Plaza Fountain		
	First Church Christ Sceintist		
	Corner Of Mass. Ave. & Huntington Ave.		
	Boston, MA.		

TO Colliers International
210 Massachusetts Avenue
Boston, Ma. 02115

WE ARE SENDING YOU Attached Under separate cover via _____ the following items:
 Shop drawings Prints Plans Samples Specifications
 Copy of Letter Change Order(s) Sent electronically

COPIES	DATE	NO.	DESCRIPTION
1	1/15/2020	Rev 1	FCCS Plaza Fountain - E100 Thru E102

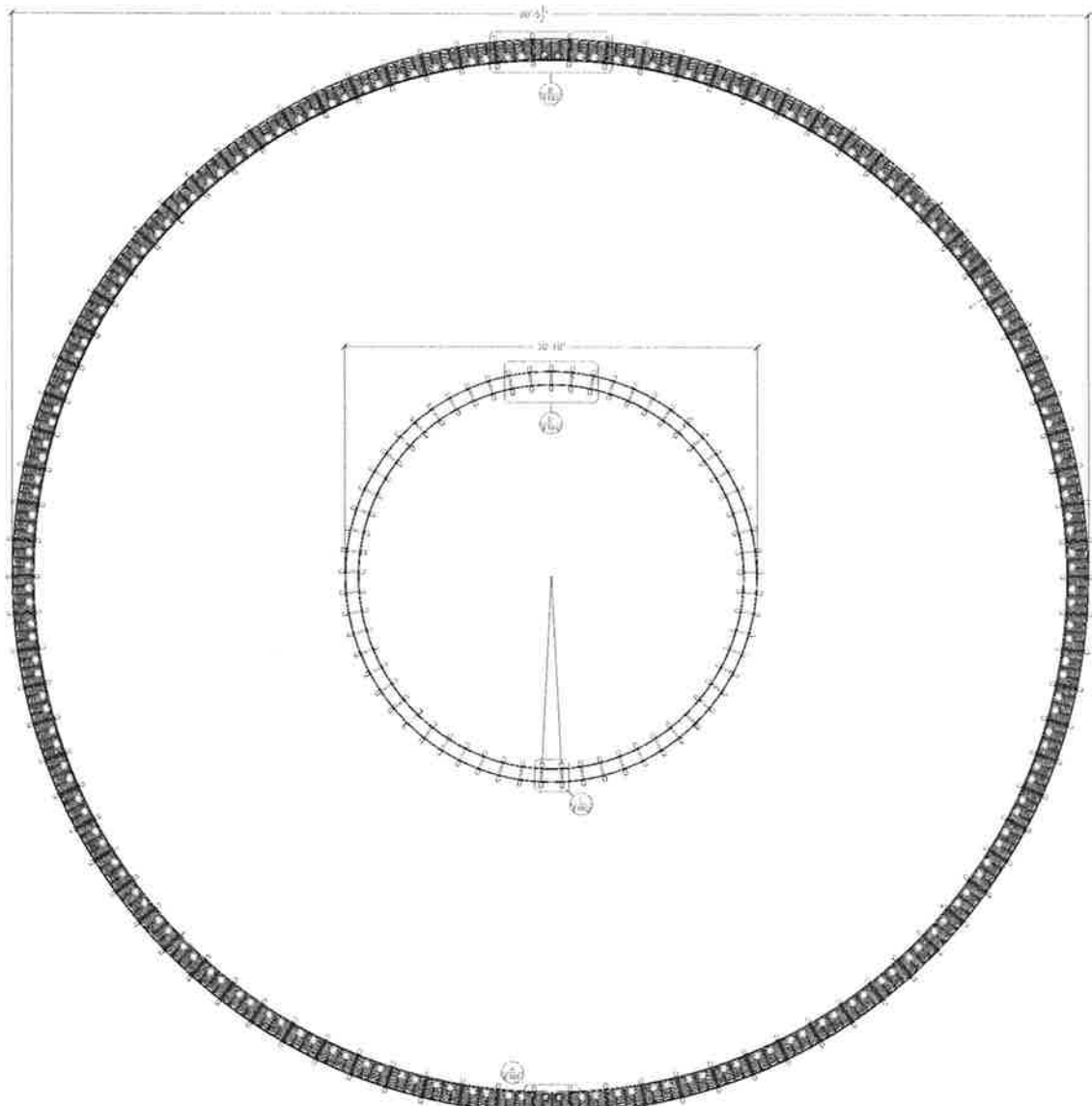
THESE ARE TRANSMITTED as checked below:

- For approval
- For your use
- As requested
- For review & comment
- FOR BIDS DUE _____
- Approved as submitted
- Approved as noted
- Returned for corrections
- _____
- Resubmit _____ copies for approval
- Submit _____ copies for distribution
- Return _____ corrected prints
- PRINTS RETURNED AFTER LOAN TO US

REMARKS _____

COPY TO: File _____

SIGNED: *Harry M. Dodakian*



PLAN VIEW @ FOUNTAIN
SCALE: 1/4" = 1'

BILL OF MATERIALS						
QTY	TRK	DESCRIPTION	LENGTH	TITLE	PKT	NOTES

HARDWARE LIST						
QTY	DESCRIPTION	LENGTH	TITLE	PKT	NOTES	

REVISIONS		
NO.	DATE	DESCRIPTION
1	08/20/20	FOR OFFICIAL SUBMITTAL
2	12/20/20	FOR APPROVAL

SNOP FINISHED

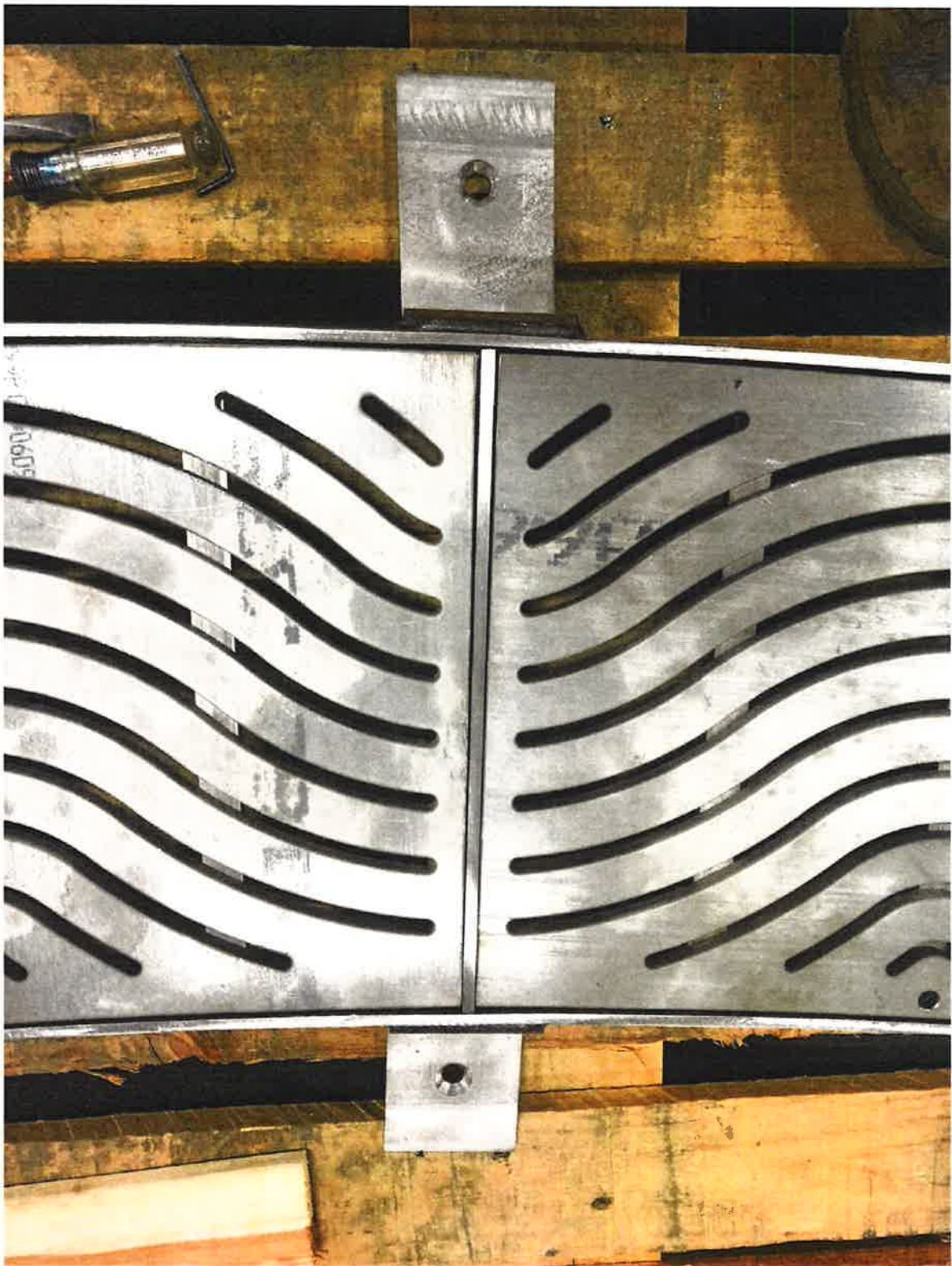
SNOP NOTES

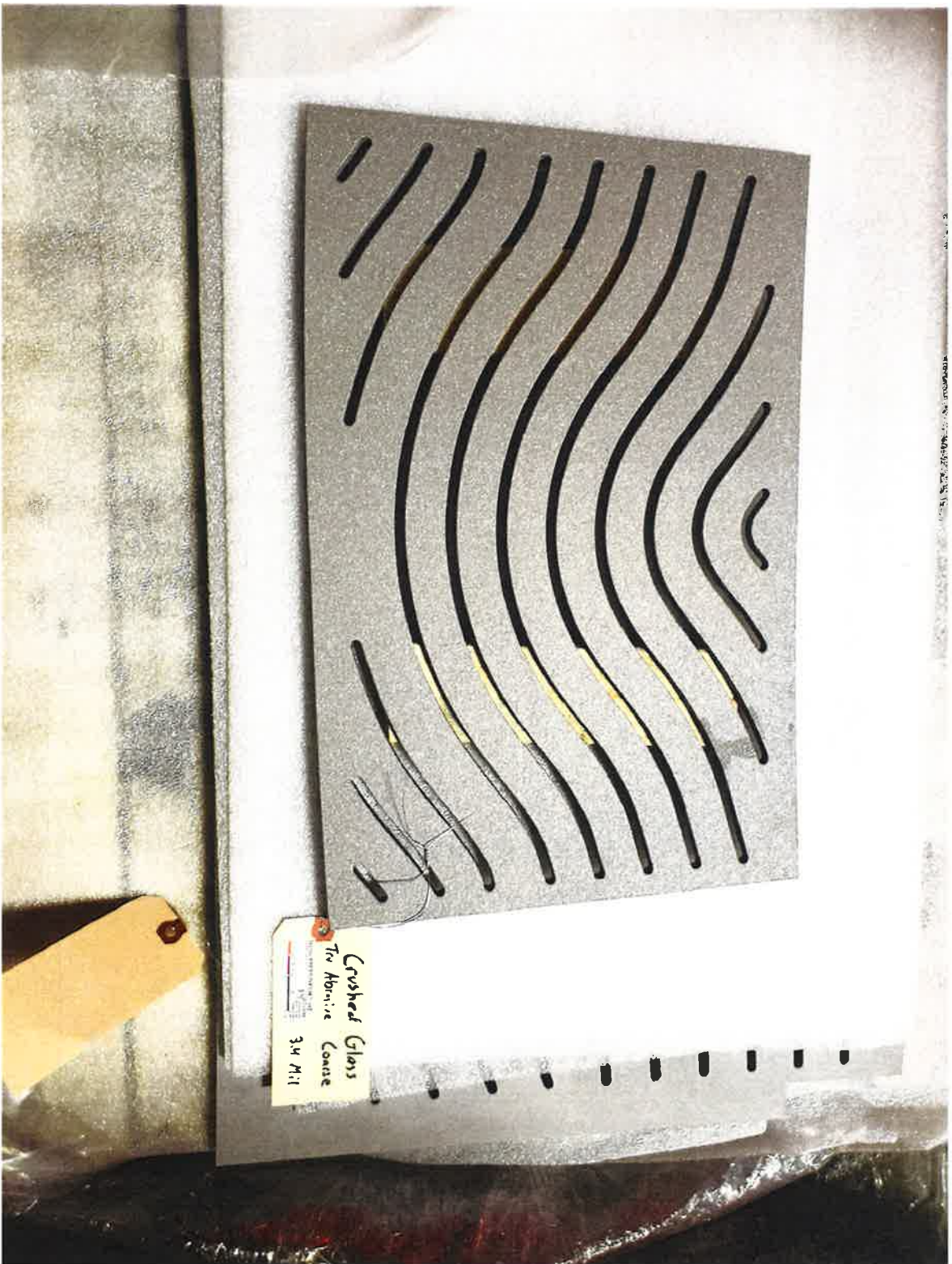
DAW
DeAngelis
DESIGN ARCHITECTS

300 Bay St., Suite 1000, South Haven, MI 49783
P 269.468.4000 F 269.468.4001
E info@deangelis.com

TITLE: Fountain
CLIENT: [Redacted]
PROJECT: [Redacted]
DATE: 08/20/20
SCALE: 1/4" = 1'
DRAWN BY: [Redacted]
CHECKED BY: [Redacted]
DATE: 11/24/20
PROJECT: Plaza Fountain
JOB: 11745
DESIGNER: E100

STAFF: FINEST SUBMITTAL
 TYP: Invo 8 Order Drawing w/ Formwork
 JOB: FCC Plaza Fountain
 JOB#: 11745





Crushed Glass
Tin Abrasive Coarse
3M M-1



