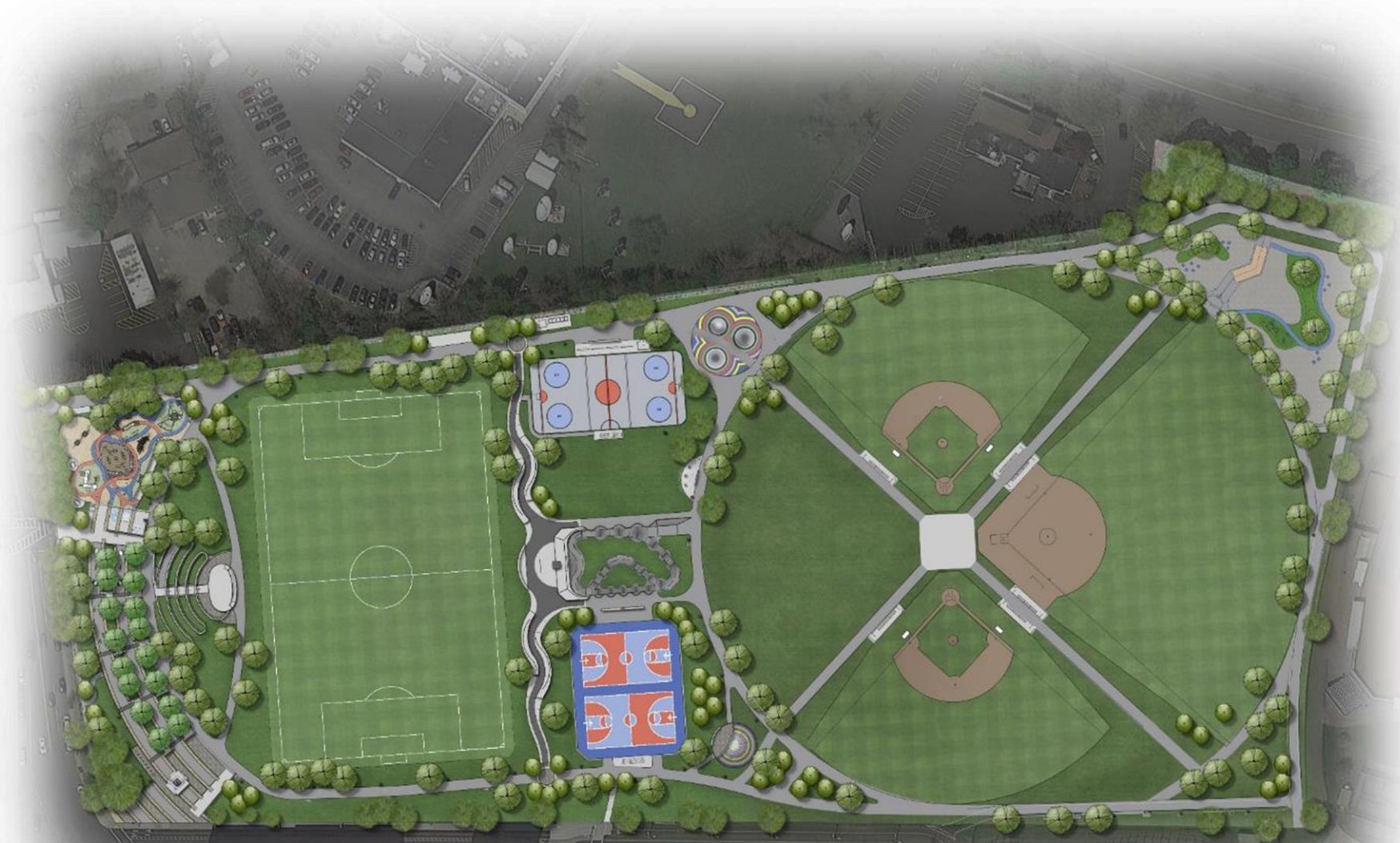


Webex Meeting  
Call in: 617-315-0704  
Access code: 712 757 264

# Improvements to **SMITH PLAYGROUND: PHASE 2**

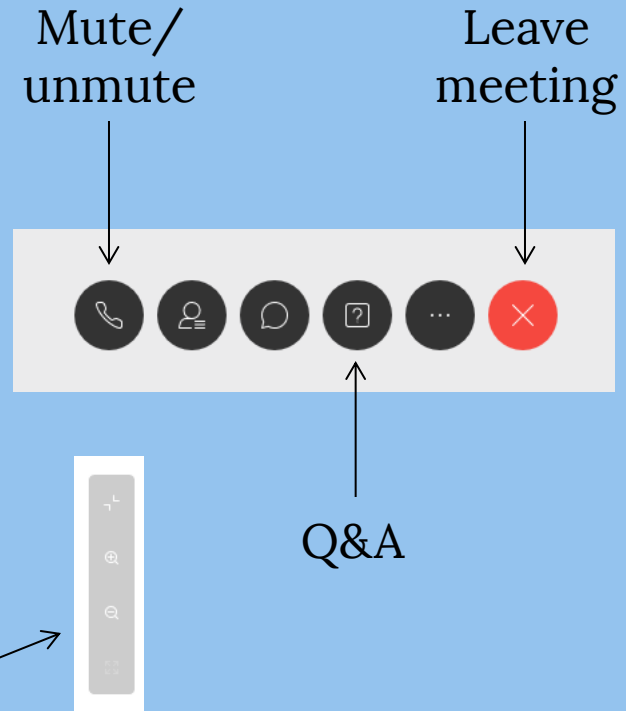


June 02, 2020  
Boston Parks and Recreation

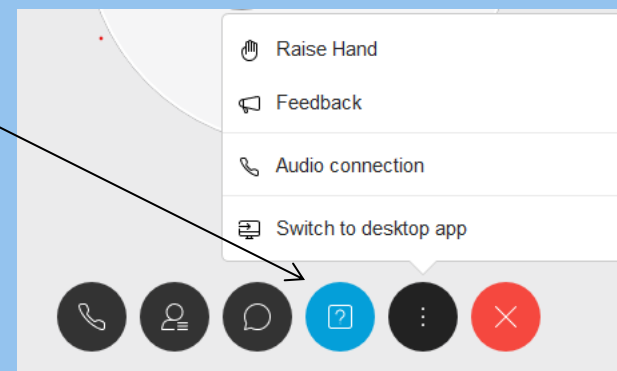


# Intro to WEBEX

- **The Audience is muted**
  - Audience members are muted by default.
- **Views, Panels, and Menu**
  - The menu at the bottom allows you to mute/unmute your voice, open the participants and chat panels, and leave the event.
  - The panels on the left side allow you to zoom in/out on the presentation, and change your view to full screen



- **You can ask questions in WebEx**
  1. Find the “Q&A” button on the bottom.
  2. Type your question in the text box.
- **You can raise your hand in WebEx**
  1. Find the ellipsis button the bottom. Click to open the menu.
  2. Click the “Raise Hand” button to raise your hand. A hand will appear next to your name.
    - TIP: To lower your hand, click the hand button again.
- **Answer yes/no questions in WebEx**
  1. Find the ellipsis button the bottom. Click to open the menu. Click on “Feedback”.
  2. Click the **green checkmark for “yes”** or the **red x for “no.”**



Webex Meeting

Call in: 617-315-0704

Access code: 712 757 264

Intro to

**WEBEX**

- **If you're having audio issues and you can't hear us:**
  1. To receive a call back, provide your phone number when you join the event, or
  2. Call the number below and enter the access code.
    - 617-315-0704
    - Access code: 712 757 264
- If you experience technical issues while joining a web event, call WebEx Technical Support at 1-866-229-3239.
- **The video (with closed captioning) will be posted on the project website about 48 hours after the event**

[boston.gov/smith-park](https://boston.gov/smith-park)



Webex Meeting  
Call in: 617-315-0704  
Access code: 712 757 264

# Intro to **WEBEX**

- **Provide feedback:**

**Have you attended any previous in-person  
community meetings for Smith Field?**

**Yes**

**No**

# AGENDA

---

1 MEETING #1 & 2 PROJECT INTRODUCTION - RECAP

---

2 PRESENTATION – DESIGN ALTERNATIVES

---

3 LISTENING & DISCUSSION

---

4 CLOSING REMARKS & NEXT STEPS

---

# PROJECT TEAM

---

## **Cathy Baker-Eclipse**

Project Manager

[cathy.baker-eclipse@boston.gov](mailto:cathy.baker-eclipse@boston.gov) or 617-961-3058

## **Stantec Planning & Landscape Architecture**

Kevin Beuttell, Project Manager

## **Liz Sullivan**

Director of External Affairs, BPRD

## **Christine Brandao**

Community Outreach Coordinator, BPRD

## **Conor Newman**

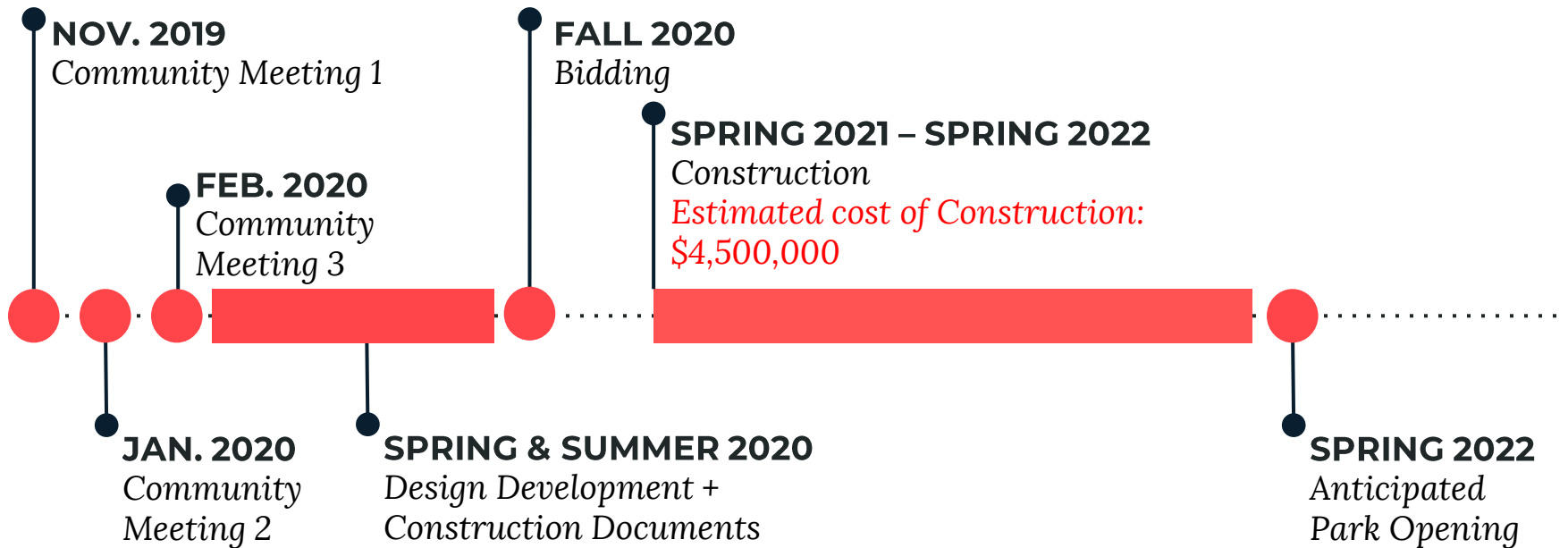
Office of Neighborhood Services

[conor.newman@boston.gov](mailto:conor.newman@boston.gov)



# PROJECT SCHEDULE & FUNDING

Webex Meeting  
Call in: 617-315-0704  
Access code: 712 757 264







# CITY OF BOSTON PRIORITIES

---

Webex Meeting  
Call in: 617-315-0704  
Access code: 712 757 264

- Expanding walkable access to parks
- Addressing equity
- Climate resilience
- Health
- Housing and community building



# PARK & RECREATION GOALS

---

Webex Meeting  
Call in: 617-315-0704  
Access code: 712 757 264

- Preserve And Protect Existing Trees
- Expand Usable Park Area
- Improve Universal Access
- Enhance Park Visibility
- Improve Access to Parks
- Design Flexible, Multi-functional Park Spaces



# COMMUNITY MEETING PROCESS

---

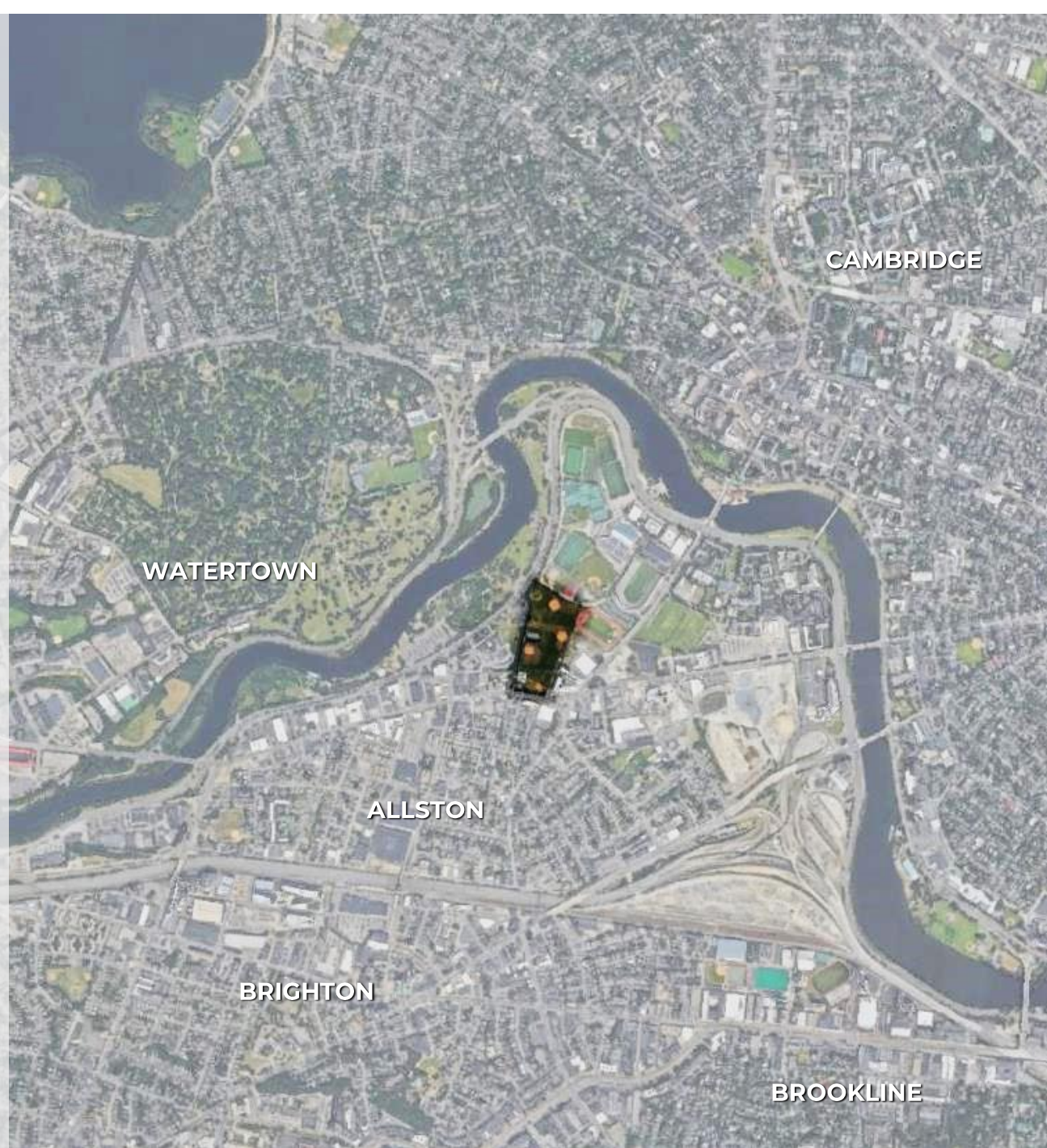
- **Meeting #1 (November 2019)**  
*Project Introduction + Overview*
- **Meeting #2 (January 16, 2020)**  
*Design Alternatives*
- **Meeting #3 (June 2020)**  
*Preview Final Proposed Design*



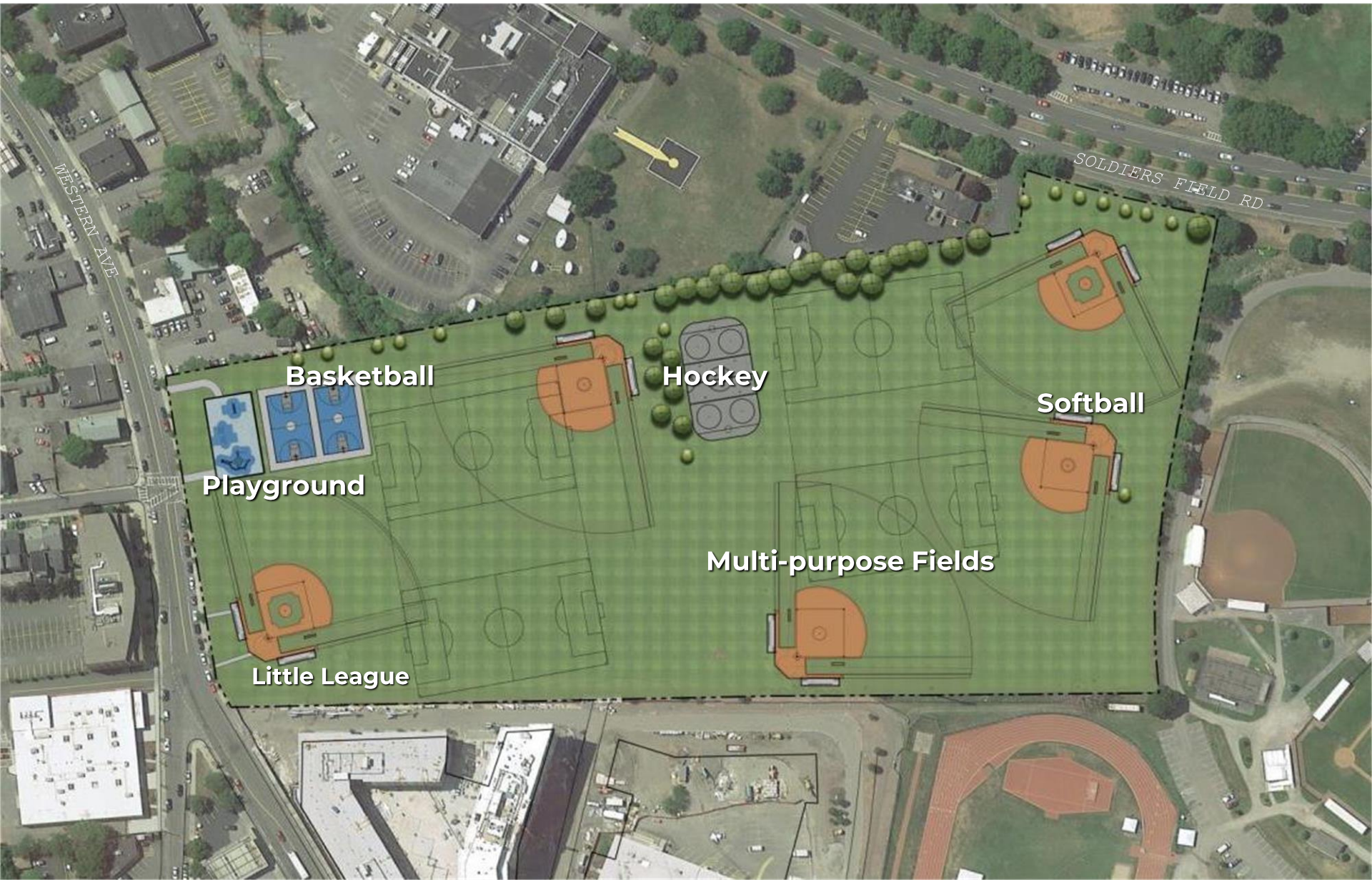
Project Overview: Locus

## SMITH FIELD

- William E. Smith Playground
- Established in 1890's
- 14-acre park
- Currently includes athletic courts, hockey/bike polo rink, athletic fields, pump track, tot lot, amphitheater, sculpture and pathways.



# PARK c.2017



Basketball

Playground

Little League

Hockey

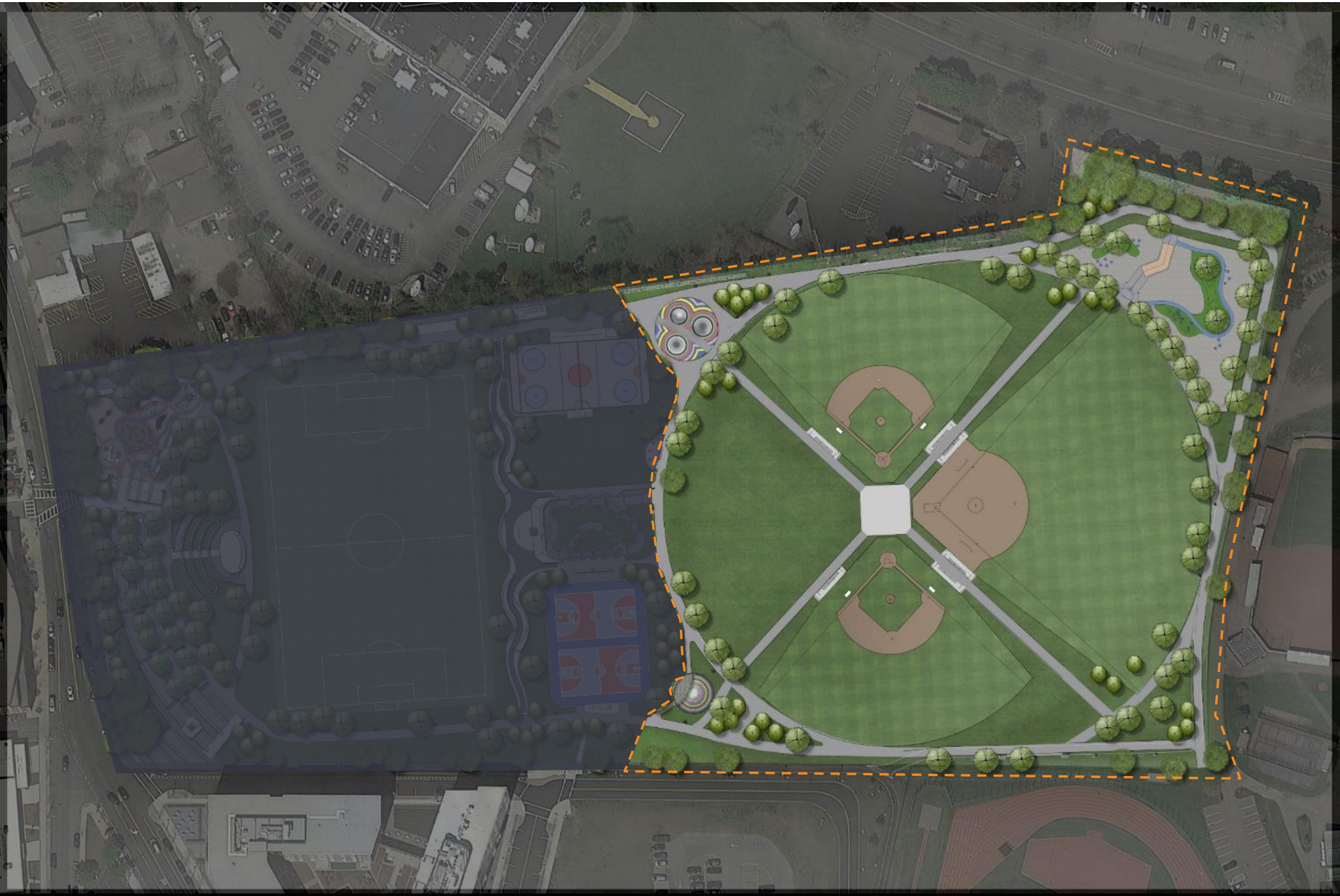
Multi-purpose Fields

Softball

# MASTER PLAN



# PHASE 2





Design  
**BALL FIELDS**

---



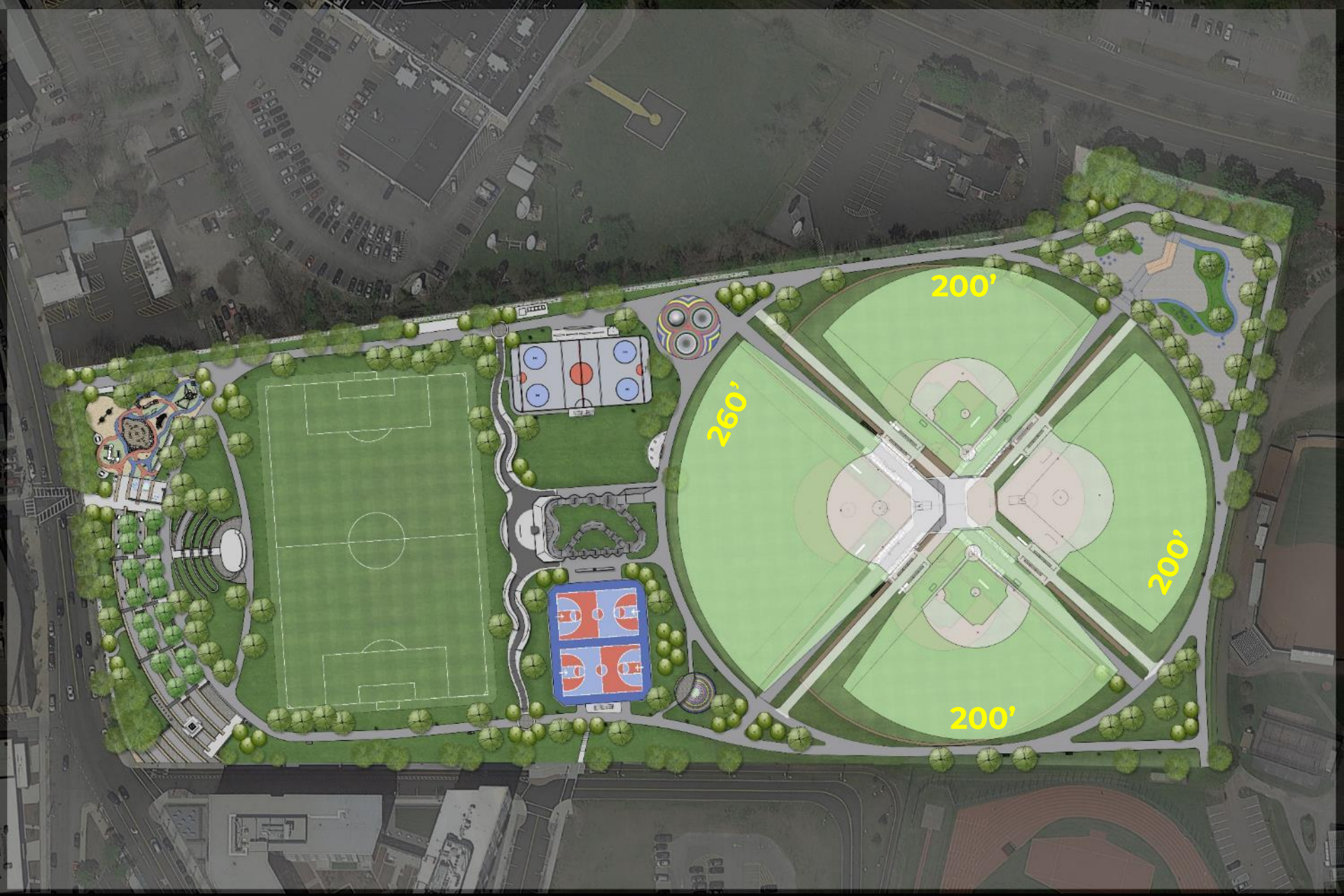
Design

# BALL FIELD ALTERNATIVE LAYOUTS

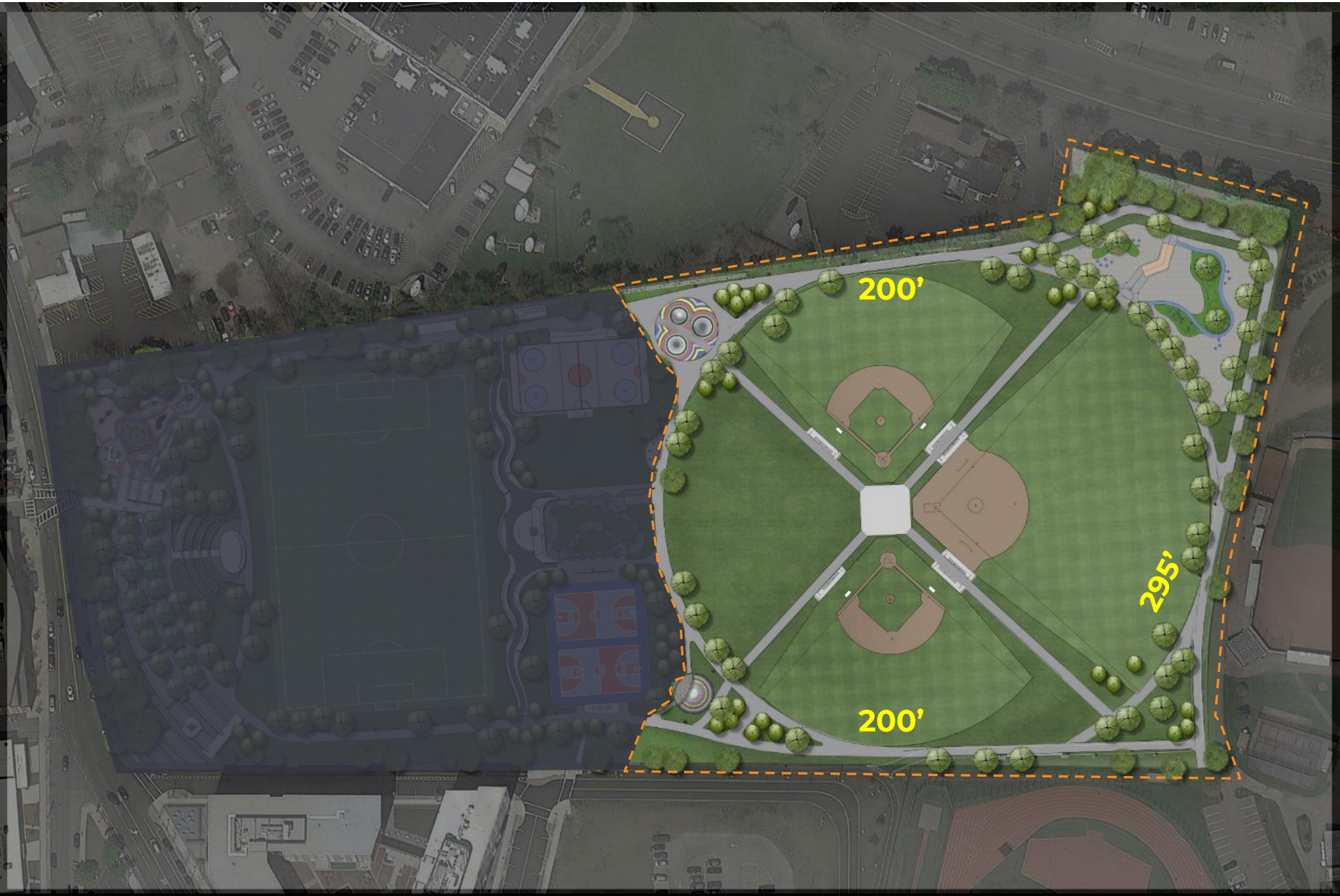


Design

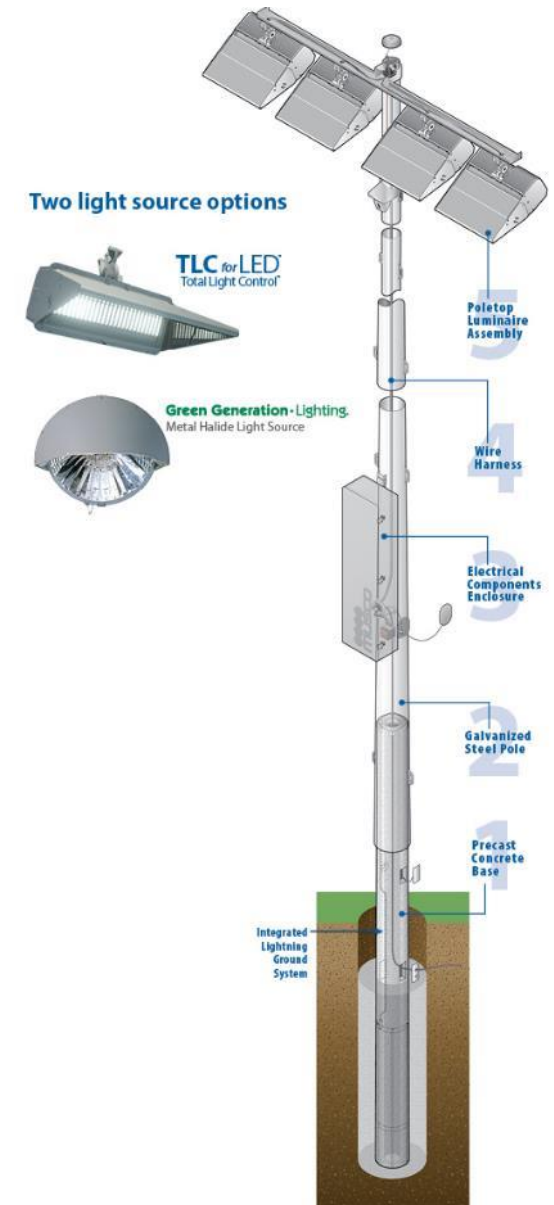
# BALL FIELD ALTERNATIVE LAYOUTS



# PHASE 2



# BALL FIELD AMENITIES



Design

# BALL FIELD AMENITIES

Webex Meeting

Call in: 617-315-0704

Access code: 712 757 264



Design

# DOG PARK

---



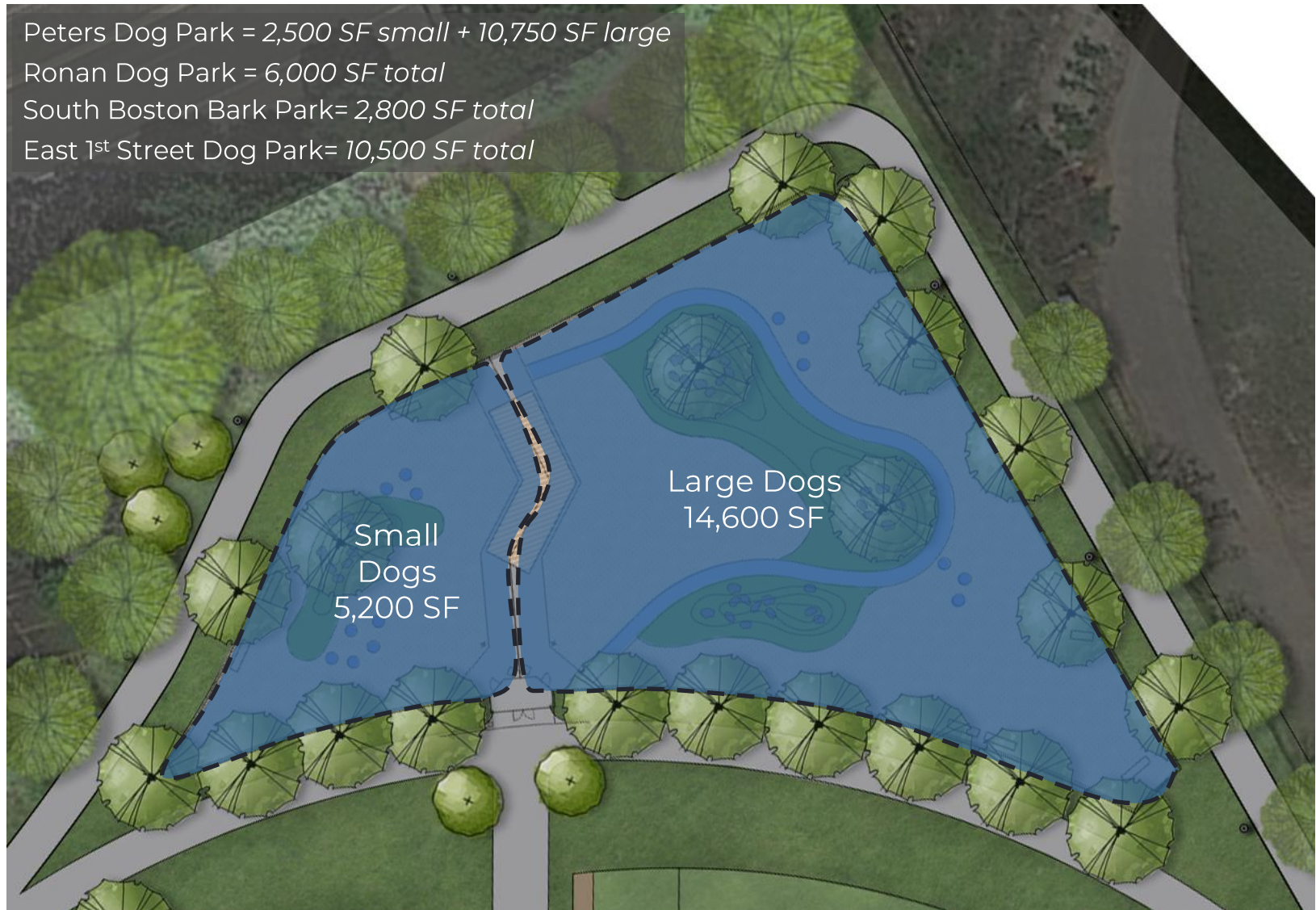
# DOG PARK

Peters Dog Park = 2,500 SF small + 10,750 SF large

Ronan Dog Park = 6,000 SF total

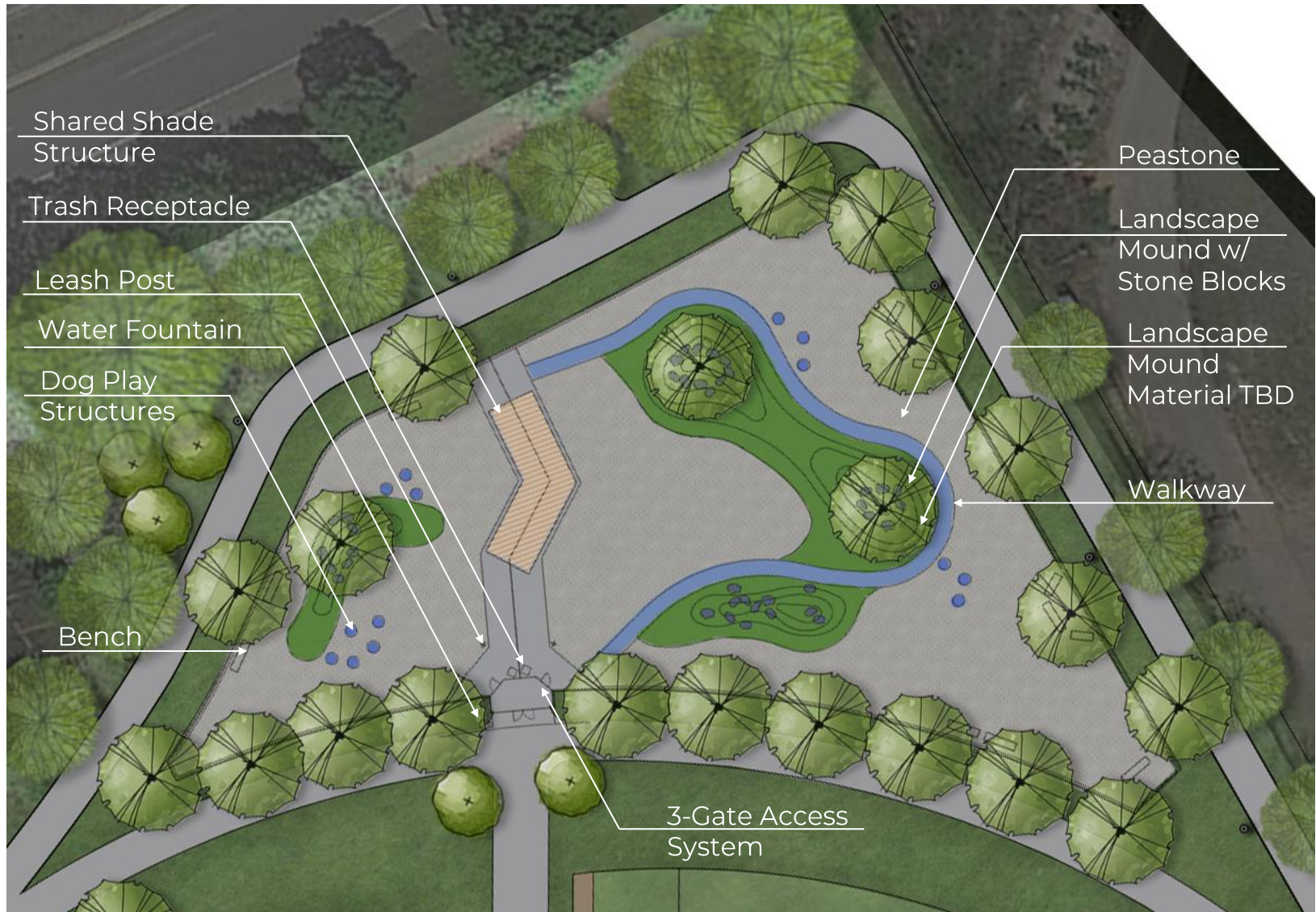
South Boston Bark Park = 2,800 SF total

East 1<sup>st</sup> Street Dog Park = 10,500 SF total





# DOG PARK



Design

# DOG PARK

---



Design

# DOG PARK

Webex Meeting  
Call in: 617-315-0704  
Access code: 712 757 264



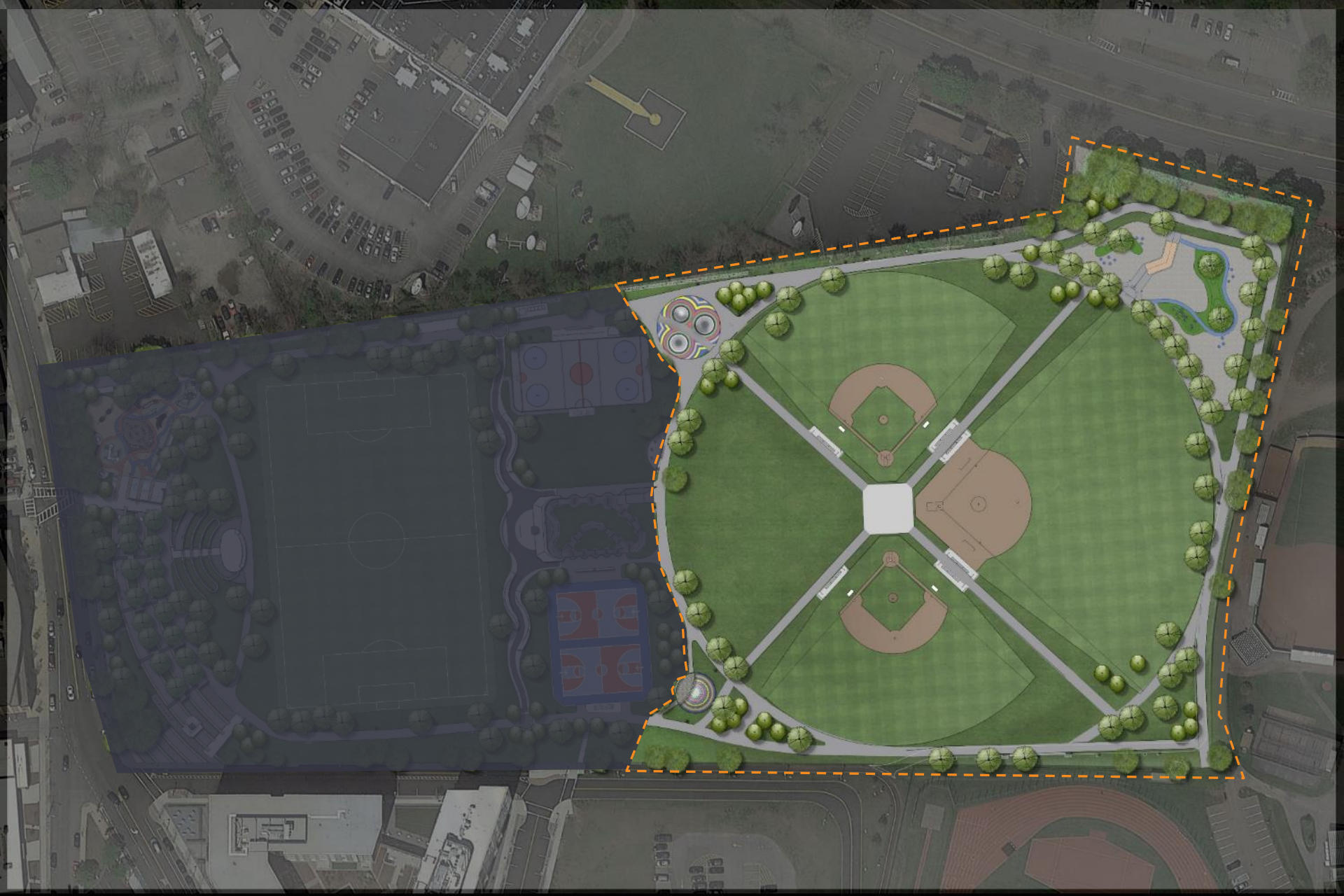
Design

# ADDITIONAL DESIGN ALTERNATIVES

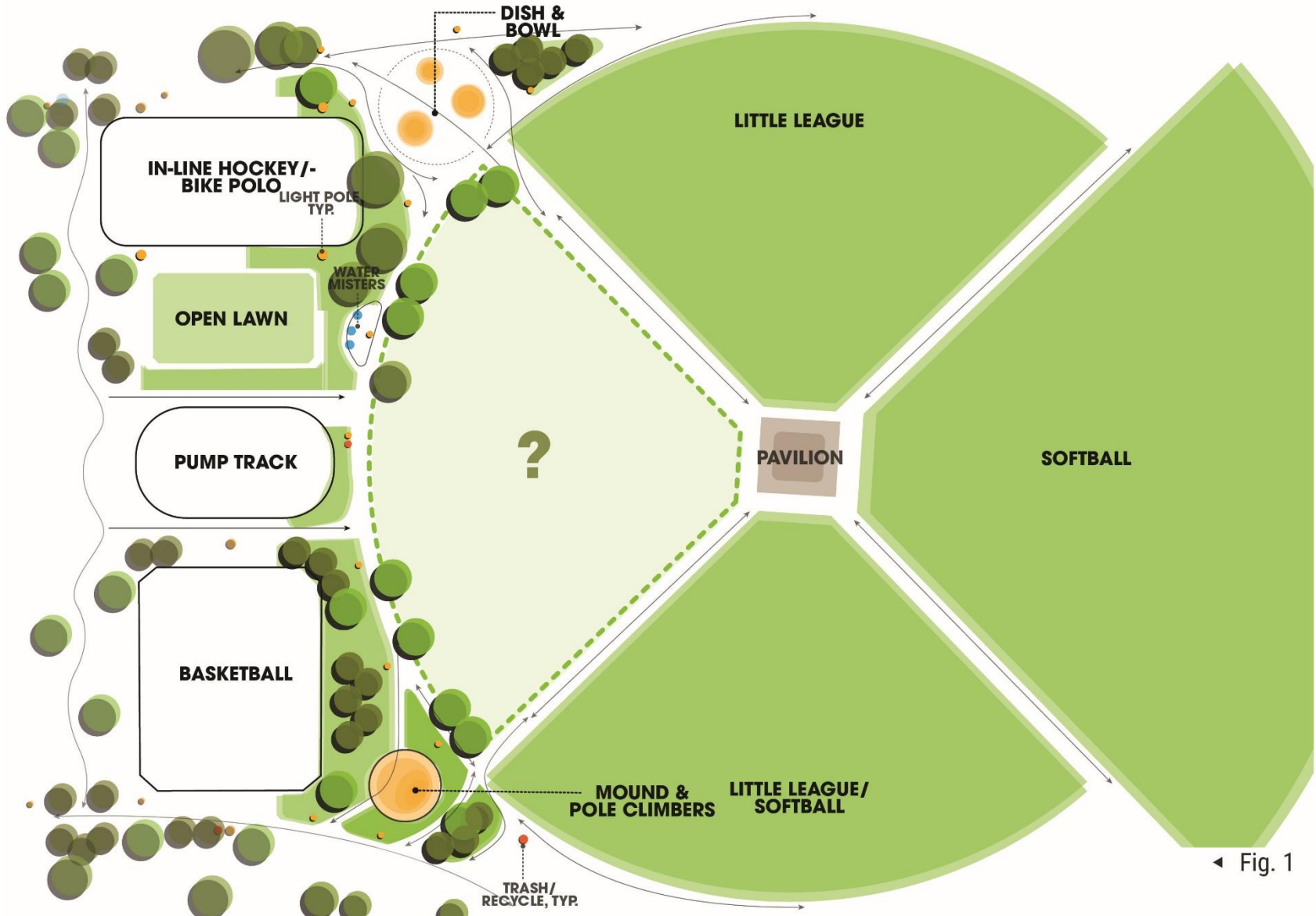
Webex Meeting

Call in: 617-315-0704

Access code: 712 757 264



# CURRENT PROGRAM



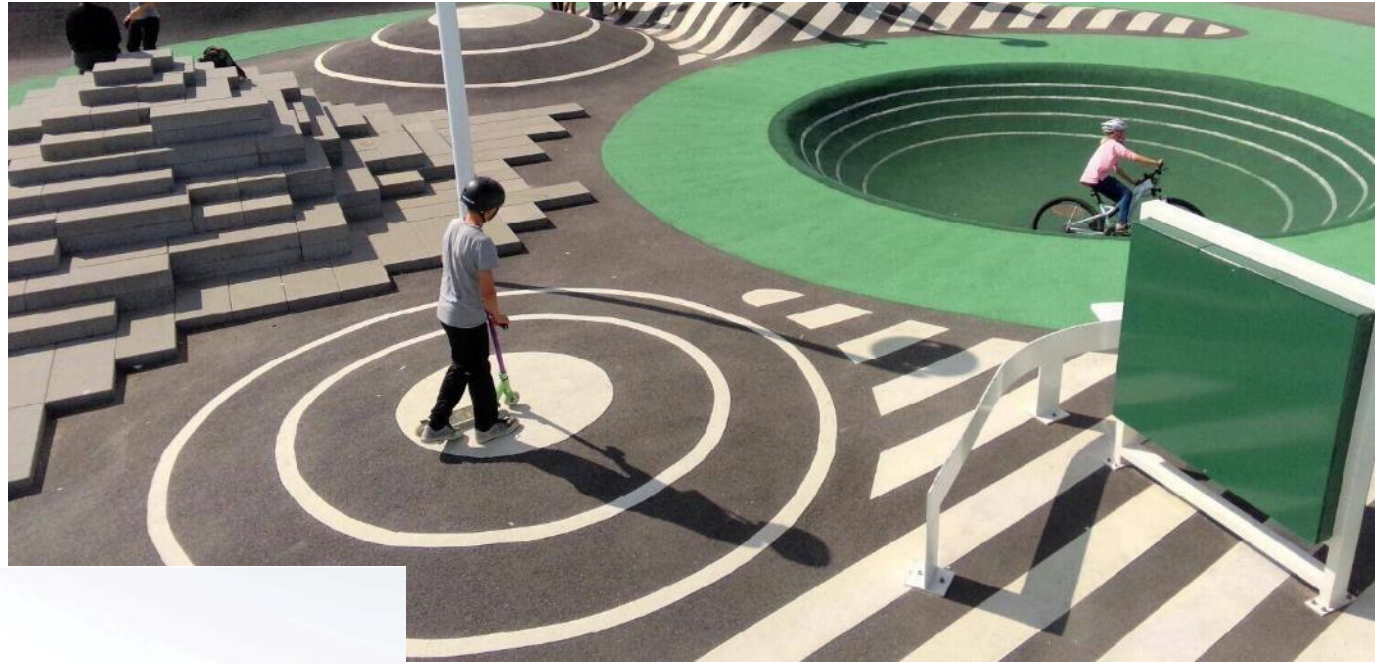
◀ Fig. 1

# 1: VOLLEYBALL LAWN



◀ Fig. 2

# PLAY ELEMENTS



Design

# PLAY ELEMENTS

Webex Meeting

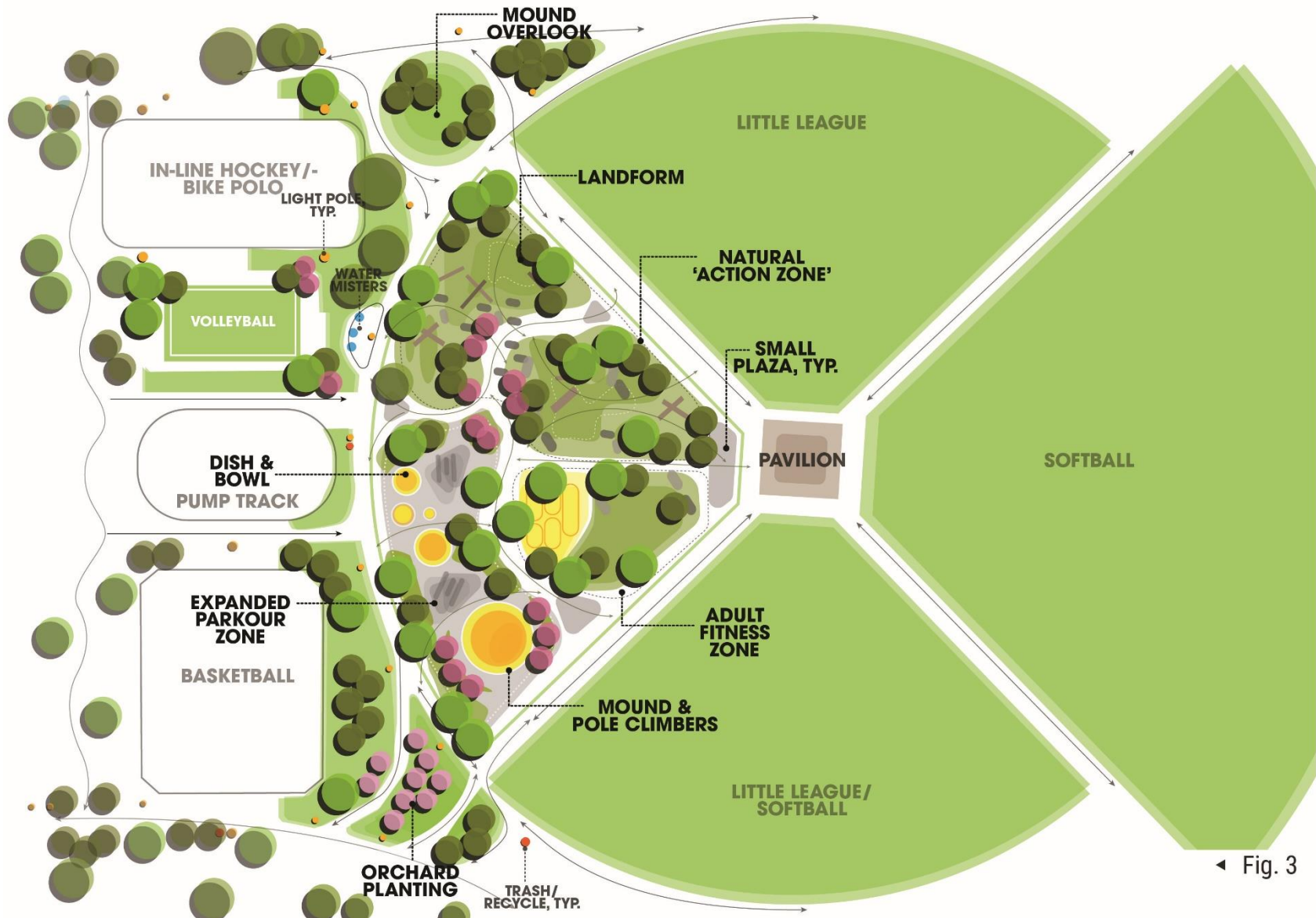
Call in: 617-315-0704

Access code: 712 757 264





# 2: ACTIVE LANDSCAPE



◀ Fig. 3

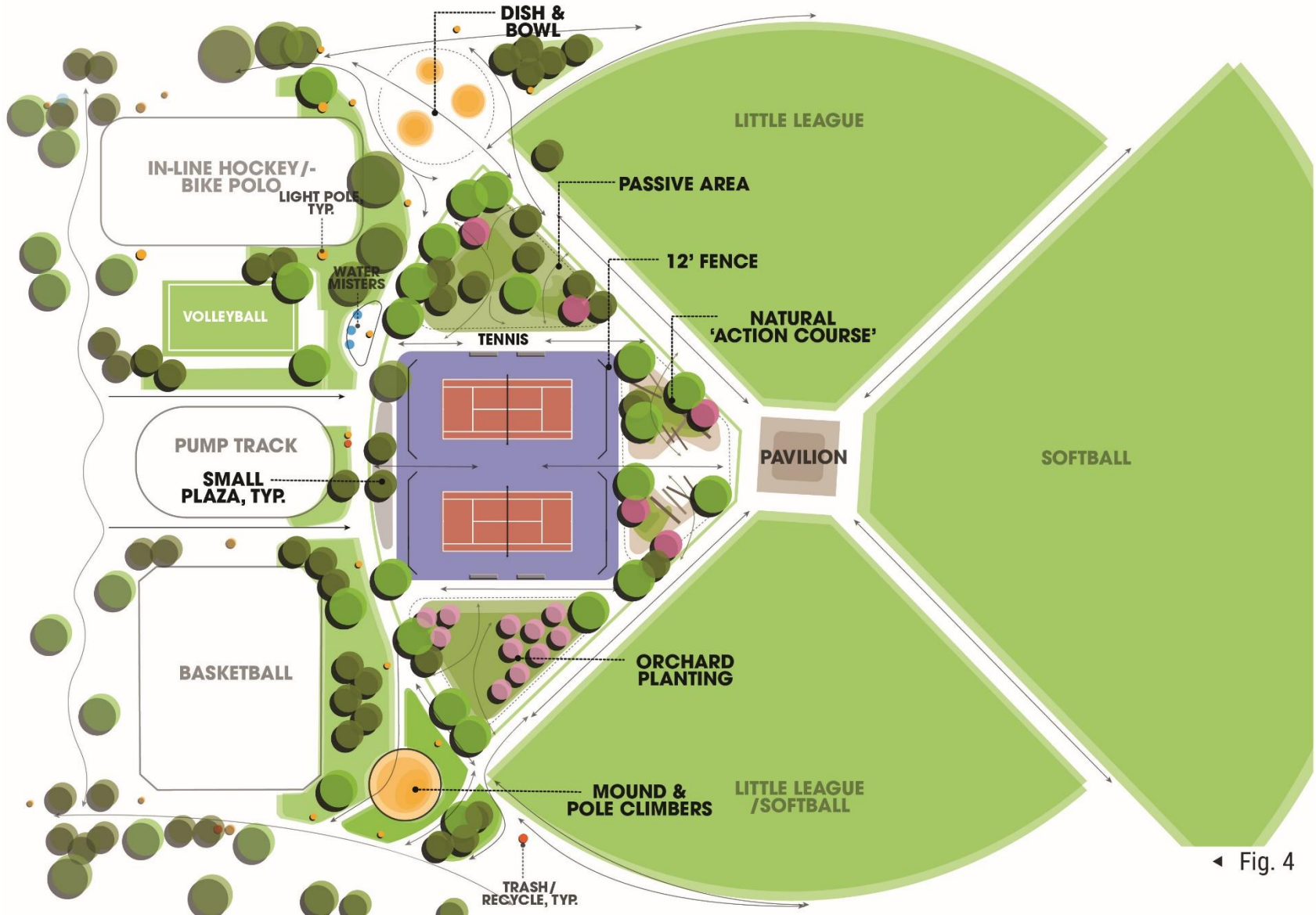
Design

# PLAY ELEMENTS

Webex Meeting  
Call in: 617-315-0704  
Access code: 712 757 264



# 3A: COURTS (TENNIS)



◀ Fig. 4

# 3B: COURTS (TEMP. PICKLEBALL)



◀ Fig. 4a

Design

# TENNIS/PICKLEBALL COURT

Webex Meeting

Call in: 617-315-0704

Access code: 712 757 264





Webex Meeting

Call in: 617-315-0704

Access code: 712 757 264

# LISTENING & DISCUSSION

Help us build great parks.  
Let us know what matters to you.

# Intro to WEBEX

- **The Audience is muted**

- Audience members are muted by default.

- **Views, Panels, and Menu**

- The menu at the bottom allows you to mute/unmute your voice, open the participants and chat panels, and leave the event.
- The panels on the left side allow you to zoom in/out on the presentation, and change your view to full screen

Mute/  
unmute

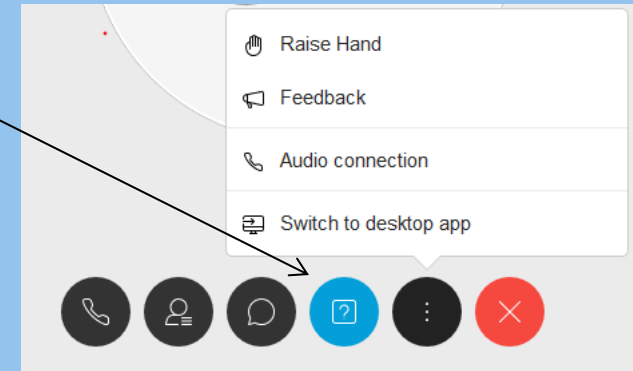
Leave  
meeting



Q&A



- **You can ask questions in WebEx**
  1. Find the “Q&A” button on the bottom.
  2. Type your question in the text box.
- **You can raise your hand in WebEx**
  1. Find the ellipsis button the bottom. Click to open the menu.
  2. Click the “Raise Hand” button to raise your hand. A hand will appear next to your name.
    - TIP: To lower your hand, click the hand button again.
- **Answer yes/no questions in WebEx**
  1. Find the ellipsis button the bottom. Click to open the menu. Click on “Feedback”.
  2. Click the **green checkmark for “yes”** or the **red x for “no.”**





Webex Meeting

Call in: 617-315-0704

Access code: 712 757 264

Intro to

**WEBEX**

- **If you're having audio issues and you can't hear us:**
  1. To receive a call back, provide your phone number when you join the event, or
  2. Call the number below and enter the access code.
    - 617-315-0704
    - Access code: 712 757 264
- If you experience technical issues while joining a web event, call WebEx Technical Support at 1-866-229-3239.
- **The video (with closed captioning) will be posted on the project website about 48 hours after the event**

[boston.gov/smith-park](https://boston.gov/smith-park)



Call in: 617-315-0704

Access code: 712 757 264

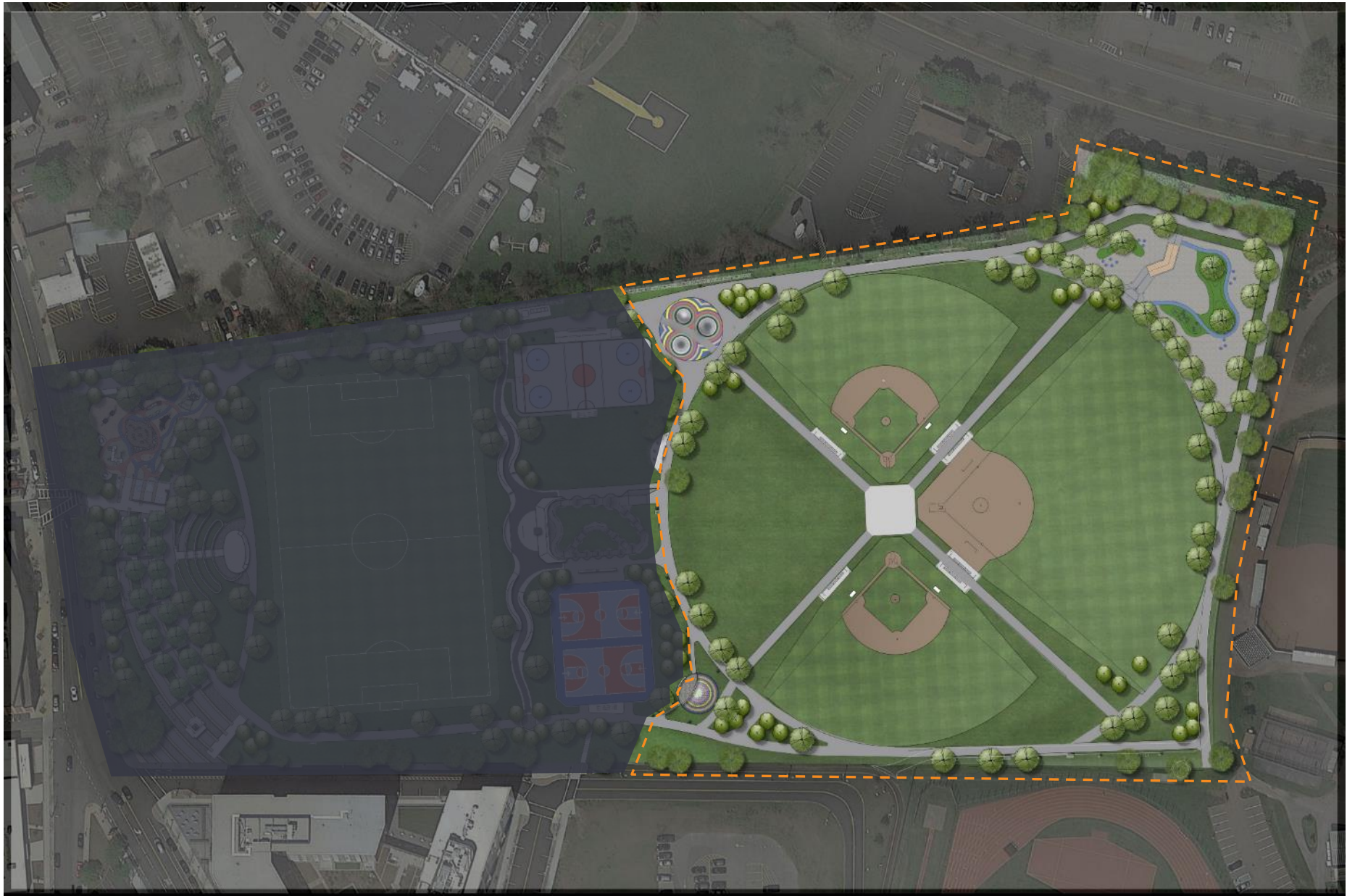
## *Group Agreements for a*

# **Fair, Productive Conversation**

- **Be respectful and use respectful language**
- **Share airtime so everyone gets a chance to be heard**
- **If you disagree, consider asking a question rather than arguing to prove your point**
- **It's OK to disagree but don't personalize it. Focus on the idea, not the person.**
- **Speak up if the process doesn't seem fair**
- **If you talk about people who are not here, don't use their names**
- **Speak for yourself, not the group.**
- **We all share responsibility for making the group productive**
- **Listen to each other.**



# PHASE 2



# THANK YOU!

[www.boston.gov/smith-park](http://www.boston.gov/smith-park)

Survey: <https://forms.gle/3MtzGaF9vcfSQoW4A>

For questions, maintenance requests or concerns regarding any of our parks contact 311

