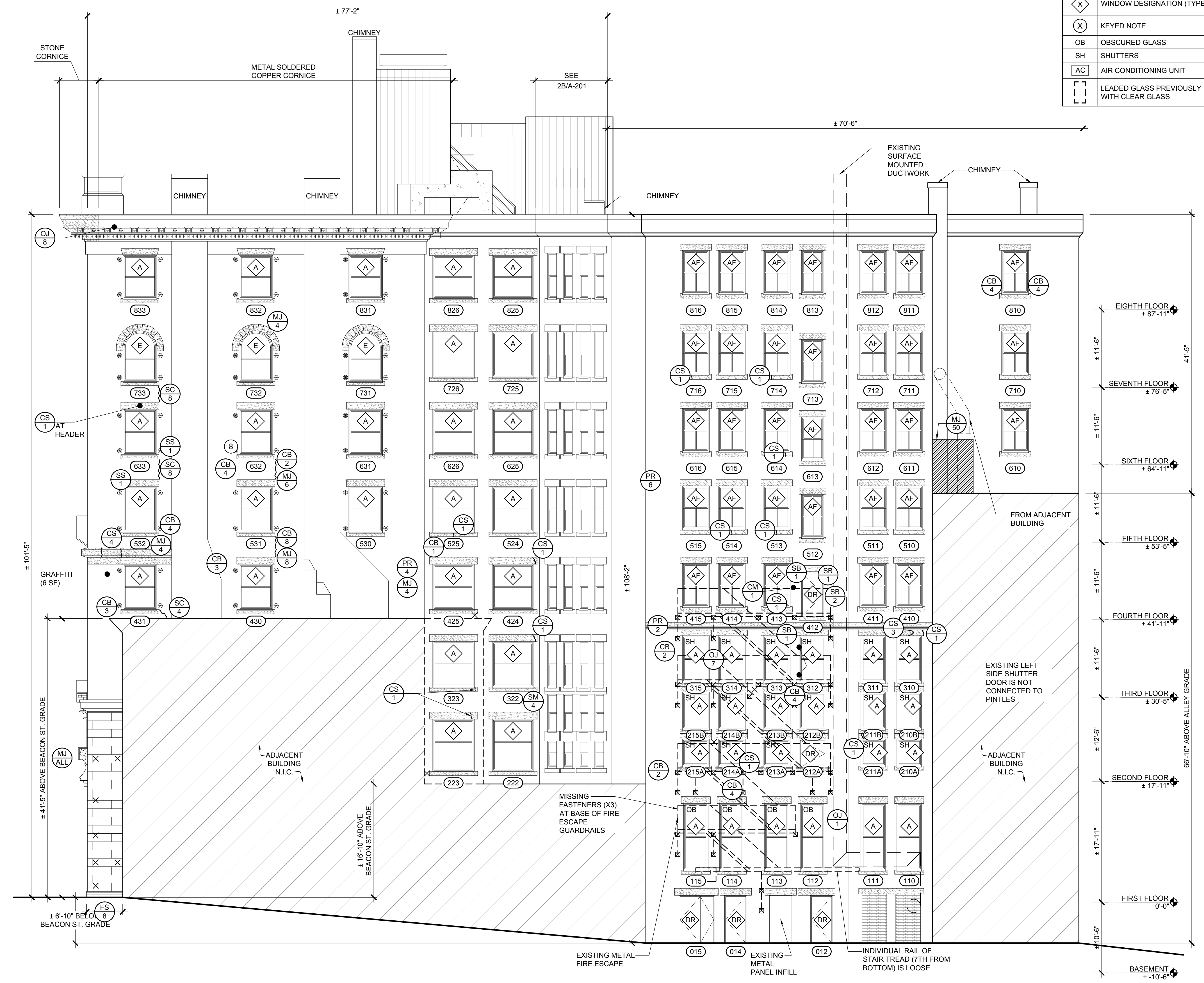


1: 1/8"=1'-0" WEST ELEVATION
 2: 1/8"=1'-0" WEST ELEVATION
 3: 1/8"=1'-0" WEST ELEVATION
 4: 1/8"=1'-0" WEST ELEVATION
 5: 1/8"=1'-0" WEST ELEVATION
 6: 1/8"=1'-0" WEST ELEVATION
 7: 1/8"=1'-0" WEST ELEVATION
 8: 1/8"=1'-0" WEST ELEVATION
 9: 1/8"=1'-0" WEST ELEVATION
 10: 1/8"=1'-0" WEST ELEVATION
 11: 1/8"=1'-0" WEST ELEVATION
 12: 1/8"=1'-0" WEST ELEVATION
 13: 1/8"=1'-0" WEST ELEVATION
 14: 1/8"=1'-0" WEST ELEVATION
 15: 1/8"=1'-0" WEST ELEVATION
 16: 1/8"=1'-0" WEST ELEVATION
 17: 1/8"=1'-0" WEST ELEVATION
 18: 1/8"=1'-0" WEST ELEVATION
 19: 1/8"=1'-0" WEST ELEVATION
 20: 1/8"=1'-0" WEST ELEVATION
 21: 1/8"=1'-0" WEST ELEVATION
 22: 1/8"=1'-0" WEST ELEVATION
 23: 1/8"=1'-0" WEST ELEVATION
 24: 1/8"=1'-0" WEST ELEVATION
 25: 1/8"=1'-0" WEST ELEVATION
 26: 1/8"=1'-0" WEST ELEVATION
 27: 1/8"=1'-0" WEST ELEVATION
 28: 1/8"=1'-0" WEST ELEVATION
 29: 1/8"=1'-0" WEST ELEVATION
 30: 1/8"=1'-0" WEST ELEVATION
 31: 1/8"=1'-0" WEST ELEVATION
 32: 1/8"=1'-0" WEST ELEVATION
 33: 1/8"=1'-0" WEST ELEVATION
 34: 1/8"=1'-0" WEST ELEVATION
 35: 1/8"=1'-0" WEST ELEVATION
 36: 1/8"=1'-0" WEST ELEVATION
 37: 1/8"=1'-0" WEST ELEVATION
 38: 1/8"=1'-0" WEST ELEVATION
 39: 1/8"=1'-0" WEST ELEVATION
 40: 1/8"=1'-0" WEST ELEVATION
 41: 1/8"=1'-0" WEST ELEVATION
 42: 1/8"=1'-0" WEST ELEVATION
 43: 1/8"=1'-0" WEST ELEVATION
 44: 1/8"=1'-0" WEST ELEVATION
 45: 1/8"=1'-0" WEST ELEVATION
 46: 1/8"=1'-0" WEST ELEVATION
 47: 1/8"=1'-0" WEST ELEVATION
 48: 1/8"=1'-0" WEST ELEVATION
 49: 1/8"=1'-0" WEST ELEVATION
 50: 1/8"=1'-0" WEST ELEVATION
 51: 1/8"=1'-0" WEST ELEVATION
 52: 1/8"=1'-0" WEST ELEVATION
 53: 1/8"=1'-0" WEST ELEVATION
 54: 1/8"=1'-0" WEST ELEVATION
 55: 1/8"=1'-0" WEST ELEVATION
 56: 1/8"=1'-0" WEST ELEVATION
 57: 1/8"=1'-0" WEST ELEVATION
 58: 1/8"=1'-0" WEST ELEVATION
 59: 1/8"=1'-0" WEST ELEVATION
 60: 1/8"=1'-0" WEST ELEVATION
 61: 1/8"=1'-0" WEST ELEVATION
 62: 1/8"=1'-0" WEST ELEVATION
 63: 1/8"=1'-0" WEST ELEVATION
 64: 1/8"=1'-0" WEST ELEVATION
 65: 1/8"=1'-0" WEST ELEVATION
 66: 1/8"=1'-0" WEST ELEVATION
 67: 1/8"=1'-0" WEST ELEVATION
 68: 1/8"=1'-0" WEST ELEVATION
 69: 1/8"=1'-0" WEST ELEVATION
 70: 1/8"=1'-0" WEST ELEVATION
 71: 1/8"=1'-0" WEST ELEVATION
 72: 1/8"=1'-0" WEST ELEVATION
 73: 1/8"=1'-0" WEST ELEVATION
 74: 1/8"=1'-0" WEST ELEVATION
 75: 1/8"=1'-0" WEST ELEVATION
 76: 1/8"=1'-0" WEST ELEVATION
 77: 1/8"=1'-0" WEST ELEVATION
 78: 1/8"=1'-0" WEST ELEVATION
 79: 1/8"=1'-0" WEST ELEVATION
 80: 1/8"=1'-0" WEST ELEVATION
 81: 1/8"=1'-0" WEST ELEVATION
 82: 1/8"=1'-0" WEST ELEVATION
 83: 1/8"=1'-0" WEST ELEVATION
 84: 1/8"=1'-0" WEST ELEVATION
 85: 1/8"=1'-0" WEST ELEVATION
 86: 1/8"=1'-0" WEST ELEVATION
 87: 1/8"=1'-0" WEST ELEVATION
 88: 1/8"=1'-0" WEST ELEVATION
 89: 1/8"=1'-0" WEST ELEVATION
 90: 1/8"=1'-0" WEST ELEVATION
 91: 1/8"=1'-0" WEST ELEVATION
 92: 1/8"=1'-0" WEST ELEVATION
 93: 1/8"=1'-0" WEST ELEVATION
 94: 1/8"=1'-0" WEST ELEVATION
 95: 1/8"=1'-0" WEST ELEVATION
 96: 1/8"=1'-0" WEST ELEVATION
 97: 1/8"=1'-0" WEST ELEVATION
 98: 1/8"=1'-0" WEST ELEVATION
 99: 1/8"=1'-0" WEST ELEVATION
 100: 1/8"=1'-0" WEST ELEVATION



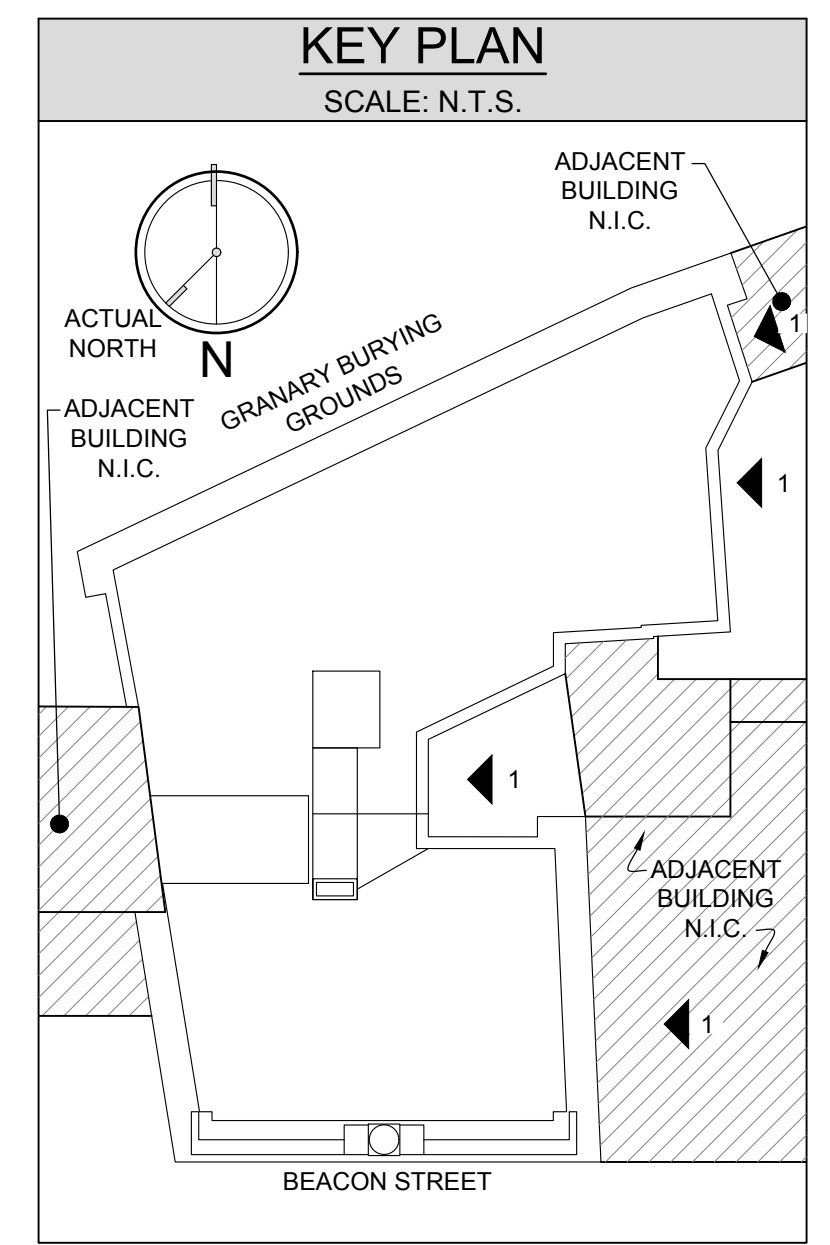
1 WEST ELEVATION
1/8"=1'-0"


LEGEND	
(XXX)	OPENING DESIGNATION (SEE SCHEDULE)
(X)	WINDOW DESIGNATION (TYPE)
(X)	KEYED NOTE
OB	OBSCURED GLASS
SH	SHUTTERS
AC	AIR CONDITIONING UNIT
[]	LEADED GLASS PREVIOUSLY REPLACED WITH CLEAR GLASS

GENERAL NOTES	
1)	ROUNDED EDGES OF STONE ON BEACON STREET ELEVATION ARE WORN/ERODED.
2)	CARBON STAINING AT 90% OF SURFACE AREA OF BEACON STREET CORNICE/OVERHANG. SIGNS OF PREVIOUS CRACK REPAIRS EVIDENT.
3)	NO LEADED T JOINTS AT STONES ON HORIZONTAL LEDGE AT 3RD FLOOR CORNICE ON BEACON STREET ELEVATION.
4)	ROWLOCK BRICK UNITS AT ALL ELEVATIONS EXCEPT LIGHTWELLS ARE BLACK/BROWN GLAZED BRICK. 60% OF UNITS ON THESE ELEVATION ARE CRACKED.
5)	HEAVY CARBON AND RUST STAINING AT STONE HEADERS AND SILLS AT AND ADJACENT TO WEST ELEVATION FIRE ESCAPE.
6)	MAJORITY OF SHUTTER DOORS CANNOT COMPLETELY CLOSE. HEAVY RUST STAINING IS EVIDENT ON THE SKYWARD FACING DOOR SURFACES.
7)	FIRE ESCAPE GUARDRAIL EMBEDMENT LOCATIONS HAVE NO PERIMETER SEALANT AND MULTIPLE SPALLED BRICK AROUND THEM. 8 LOCATIONS AND 4 SPALLED BRICK UNITS EACH.
8)	EXISTING DELAMINATED PAINT/COATING IS PRESENT ALL THE LIGHTWELL ELEVATIONS.

KEYED NOTES	
①	BALCONY EMBEDMENT OK. 65% OF BALCONY IS RUSTED AND HAS FLAKING PAINT. NEWER FASTENERS.
②	EDGES OF STONE ARE SPALLED. PREVIOUS MORTAR JOINT REPAIRS ARE EVIDENT.
③	STEP CRACK THROUGH STONE AT "U" IN THE WORD "HOUSE".
④	ANCHOR/PIN LOCATION COVERED WITH INFILL. SEPARATING MORTAR JOINTS (16 LF) ALL AROUND TABLET.
⑤	CARBON STAINING AT ALL ORNAMENTAL STONWORK.
⑥	DETAILS AND SCROLL EDGES SPALLED. WIDESPREAD CARBON STAINING.
⑦	COPPER PREVIOUSLY PAINTED. JOINT BETWEEN COPPER AND STONE OPEN, FASTENERS/RIVETS POPPED/MISSING.
⑧	BROKEN SHUTTER PINTLE.
⑨	ARCH APEX STONE HAS HARD JOINT - NO SPACE.
⑩	WOOD AND CHICKEN WIRE AT GAP.
⑪	RUSTED METAL FAUX BALCONY.
⑫	DETERIORATED MORTAR JOINT (9 LF) AT STONE AROUND BALCONY.

CONDITION LEGEND	
X	ABANDONED ANCHOR
SSR	SPALLED STONE REPAIR (# = SF)
CSR	CRACKED STONE REPAIR (# = LF)
PS	PREVIOUS STONE REPAIR (# = SF)
PMJ	PREVIOUS MORTAR JOINT REPAIR (# = SF)
MJ	CRACKED/DETERIORATED/MISSING MORTAR JOINT
SS	SPALLED STONE (# = SF)
CS	CRACKED STONE (# = LF)
RM	RUSTED METAL PANEL OR FLASHING (# = SF)
SB	SPALLED BRICK UNIT(S)
CB	CRACKED BRICK UNIT(S)
DB	DISPLACED BRICK UNIT(S)
SC	STEP CRACK THROUGH MASONRY (# = LF)
OJ	OPEN JOINT (# = LF)
ES	EFFLORESCENCE STAINING (# = SF)
CG	CRACKED GLASS (# = UNIT)
/	STEP CRACK
I	BEAM PENETRATION
⊙	SHUTTER PINTLE





WESSLING ARCHITECTS
AIA-CESI-BOCA

PRESIDENTS PLACE, 1250 HANCOCK STREET, SUITE 615N
QUINCY, MA 02169 TEL. 617-773-8150 FAX 617-773-4902
www.wesslingarchitects.com

CONSULTANTS:

PROJECT:

HISTORIC FACADE RESTORATION

14 BEACON STREET
BOSTON, MA 02108

CLIENT:

FAROS PROPERTIES

20 ASHBURTON PLACE, 2ND FLOOR
BOSTON, MA 02108

NOT FOR CONSTRUCTION

PROFESSIONAL

PREPARED BY A LICENSED ARCHITECT
Any changes to this item can be a violation of the law unless altered by a licensed architect. Any alteration made to this item must be accompanied by a specific description of change or changes made; date change was made, as well as the seal of the licensed architect who made or oversaw the changes.

MARK	DATE	DESCRIPTION
	04-25-18	HISTORIC REVIEW SUBMISSION

ISSUE:

PROJECT NO.: 18034
DRAWN BY: LAW / PON
CHECKED BY: JSG
DRAWING SCALE: AS NOTED

SHEET TITLE:

EXISTING WEST ELEVATION

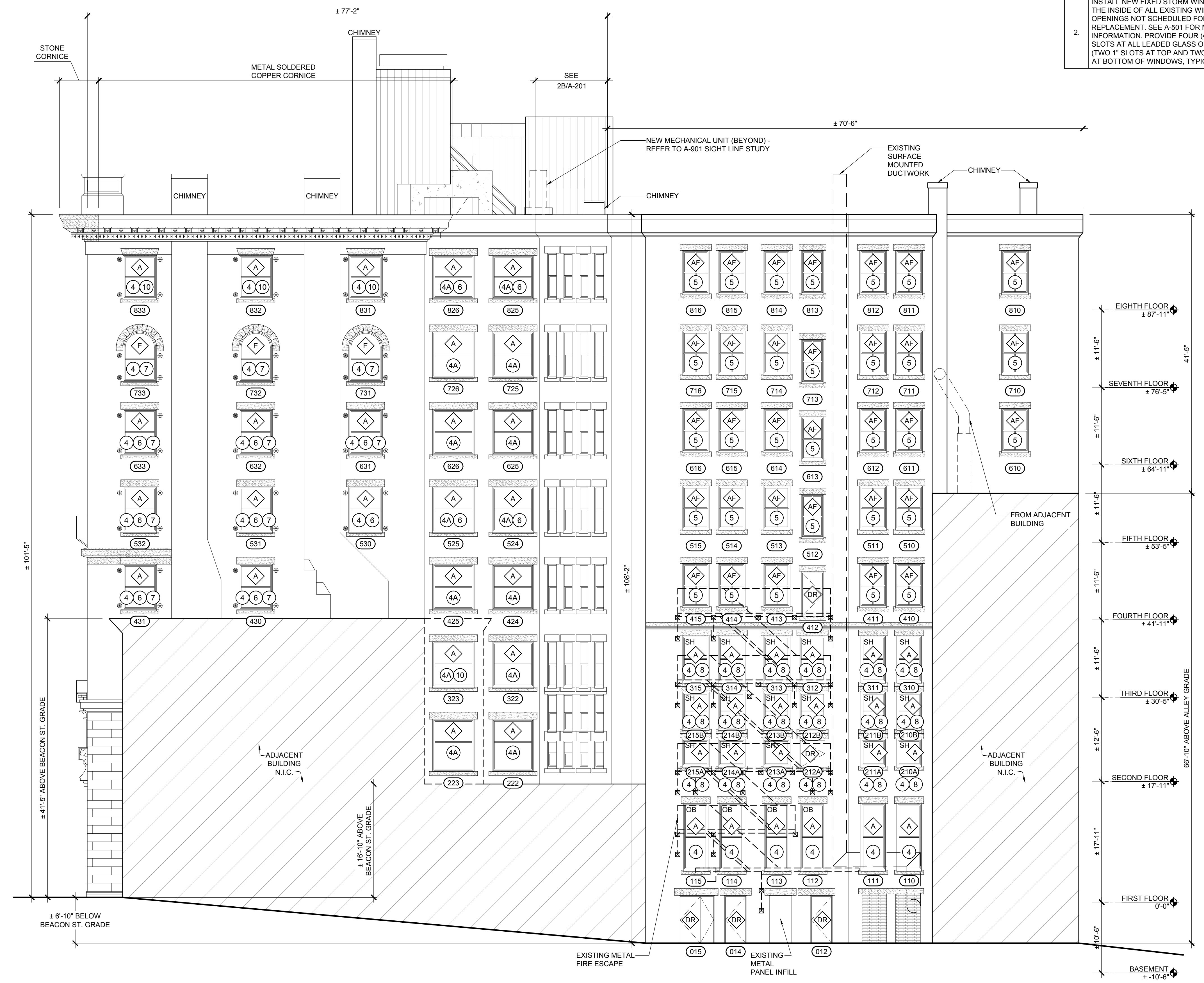
SHEET:

A-203

DO NOT SCALE DRAWING

COPYRIGHT © STEPHEN J. WESSLING ARCHITECTS INC. 2018

Drawing Name: 18-0320-01-18034 - 18 Beacon Street exterior restoration (Sheet) 18034_A-207 Proposed West Elevation.dwg
 Date: 2018, 12:51 PM
 User: JWG
 Plot Date: 2018, 12:51 PM
 Plot User: JWG
 Plot Device: HP DesignJet T1100e
 Plot Path: C:\Users\jwg\AppData\Local\Temp\18034_A-207 Proposed West Elevation.dwg
 Plot Scale: 1/8"=1'-0"
 Plot Size: 36" x 48"



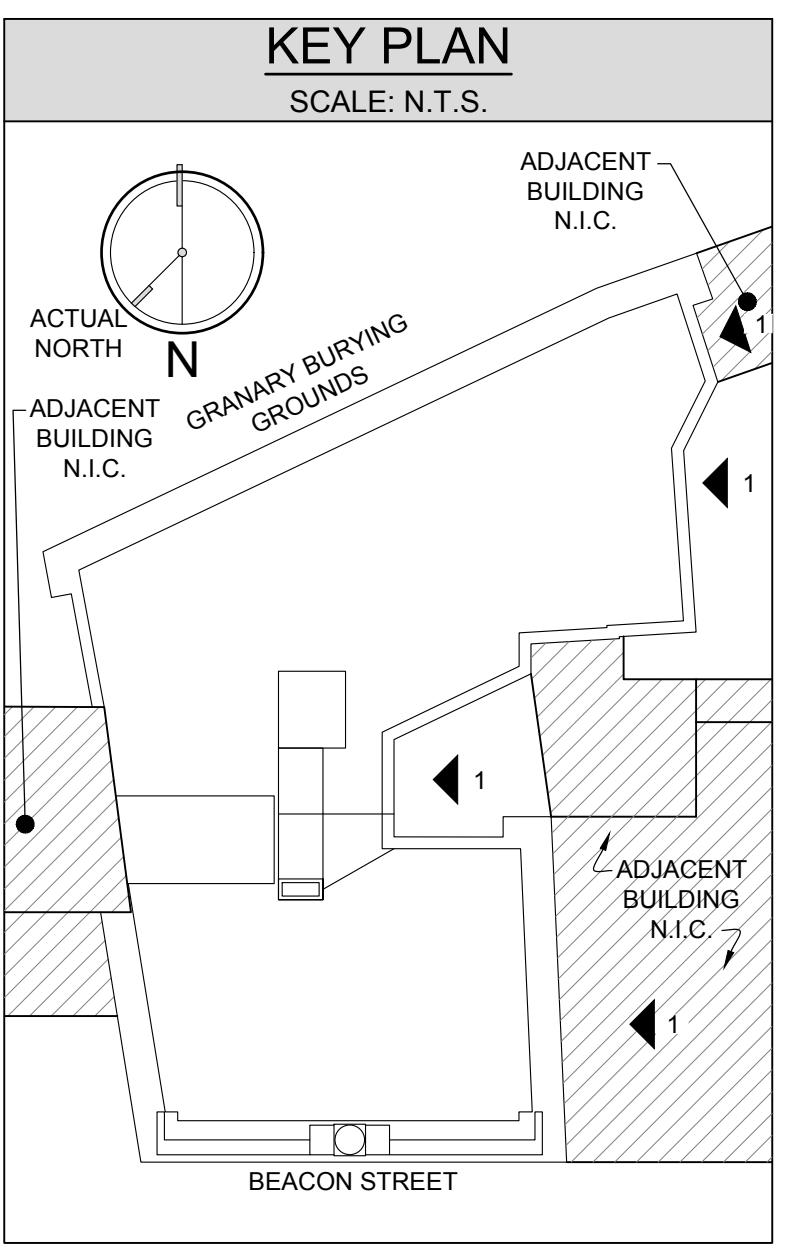
1 WEST ELEVATION
1/8"=1'-0"

- GENERAL WORK NOTES**
- REMOVE AND REPLACE ALL WINDOW PERIMETER SEALANTS.
 - INSTALL NEW FIXED STORM WINDOWS AT THE INSIDE OF ALL EXISTING WINDOW OPENINGS NOT SCHEDULED FOR REPLACEMENT. SEE A-501 FOR MORE INFORMATION. PROVIDE FOUR (4) VENT SLOTS AT ALL LEADED GLASS OPENINGS (TWO 1" SLOTS AT TOP AND TWO 1" SLOTS AT BOTTOM OF WINDOWS, TYPICAL).

- PROPOSED WORK NOTES**
- NOTE:** REFER TO WINDOW SCHEDULE FOR SPECIFIC WORK ITEMS FOR EACH OPENING.
- REFINISH - REGLAZE AND REPAINT.
 - RESTORE EXISTING SASH, FRAME, AND HARDWARE.
 - REPLICATE ONE OR BOTH SASH DETERIORATED BEYOND BEING RESTORED.
 - REPLACE EXISTING WINDOW SASH WITH NEW WOOD SASH - MARVIN MAGNUM SINGLE HUNG TILT PAC - REFER TO SHEET A-502.
 - REPLACE EXISTING WINDOW WITH NEW WOOD WINDOW AND FRAME - JB PROPER BOSTONIAN - REFER TO SHEET A-503.
 - REPLACE EXISTING WINDOW AND FRAME WITH NEW ALUMINUM WINDOW - REFER TO SHEET A-505.
 - REPLACE WOOD SILL TO MATCH EXISTING.
 - REPLACE WOOD BRICK MOULD OR TRIM TO MATCH EXISTING.
 - MAINTAIN EXISTING SHUTTERS OR REPLACE IN KIND.
 - REPLACE DOOR.
 - REPLACE INTERIOR TRIM.
 - REMOVE EXISTING WINDOW AND INSTALL NEW BRICK MASONRY INFILL - SET BACK 4" FROM FACE OF WALL.
 - REMOVE EXISTING WINDOW AND INSTALL NEW MECHANICAL LOUVER IN OPENING.

ELEVATIONS LEGEND

	BRICK MASONRY UNITS
	STONE
	STONE MORTAR JOINTS
	PARTITION WALL OBSTRUCTION
	NEW MECHANICAL LOUVER IN EXISTING WINDOW OPENING
	EXISTING BRICK INFILL
	NEW BRICK INFILL IN EXISTING WINDOW OPENING
	EXISTING CAST IRON DECORATIVE BALCONY
	EXISTING SHUTTER PINTLE



WESSLING ARCHITECTS
AIA-CES-BOCA

PRESIDENTS PLACE, 1250 HANCOCK STREET, SUITE 615N
QUINCY, MA 02169 TEL. 617-773-8150 FAX 617-773-4902
www.wesslingarchitects.com

CONSULTANTS:

PROJECT:

HISTORIC FACADE RESTORATION

14 BEACON STREET
BOSTON, MA 02108

CLIENT:

FAROS PROPERTIES

20 ASHBURTON PLACE, 2ND FLOOR
BOSTON, MA 02108

NOT FOR CONSTRUCTION

PROFESSIONAL

PREPARED BY A LICENSED ARCHITECT

Any changes to this item can be a violation of the law unless altered by a licensed architect. Any alteration made to this item must be accompanied by a specific description of change or changes made; date change was made, as well as the seal of the licensed architect who made or oversaw the changes.

MARK	DATE	DESCRIPTION
	04-25-18	HISTORIC REVIEW SUBMISSION

ISSUE:

PROJECT NO.: 18034
DRAWN BY: LAW / PON
CHECKED BY: JSG
DRAWING SCALE: AS NOTED

SHEET TITLE:

PROPOSED WEST ELEVATION

SHEET:

A-207

DO NOT SCALE DRAWING

COPYRIGHT © STEPHEN J. WESSLING ARCHITECTS INC. 2018

CONSULTANTS:

PROJECT:

**HISTORIC
FACADE
RESTORATION**

14 BEACON STREET
BOSTON, MA 02108

CLIENT:

**FAROS
PROPERTIES**

20 ASHBURTON PLACE, 2ND FLOOR
BOSTON, MA 02108

**NOT FOR
CONSTRUCTION**

PROFESSIONAL

PREPARED BY A LICENSED ARCHITECT

Any changes to this item can be a violation of the law unless altered by a licensed architect. Any alteration made to this item must be accompanied by a specific description of change or changes made; date change was made, as well as the seal of the licensed architect who made or oversaw the changes.

MARK	DATE	DESCRIPTION
	04-25-18	HISTORIC REVIEW SUBMISSION
ISSUE:		

PROJECT NO.:	18034
DRAWN BY:	LAW
CHECKED BY:	SAW
DRAWING SCALE:	6"=1'-0"

SHEET TITLE:

**EXISTING
WOOD WINDOW
DETAILS**

SHEET:

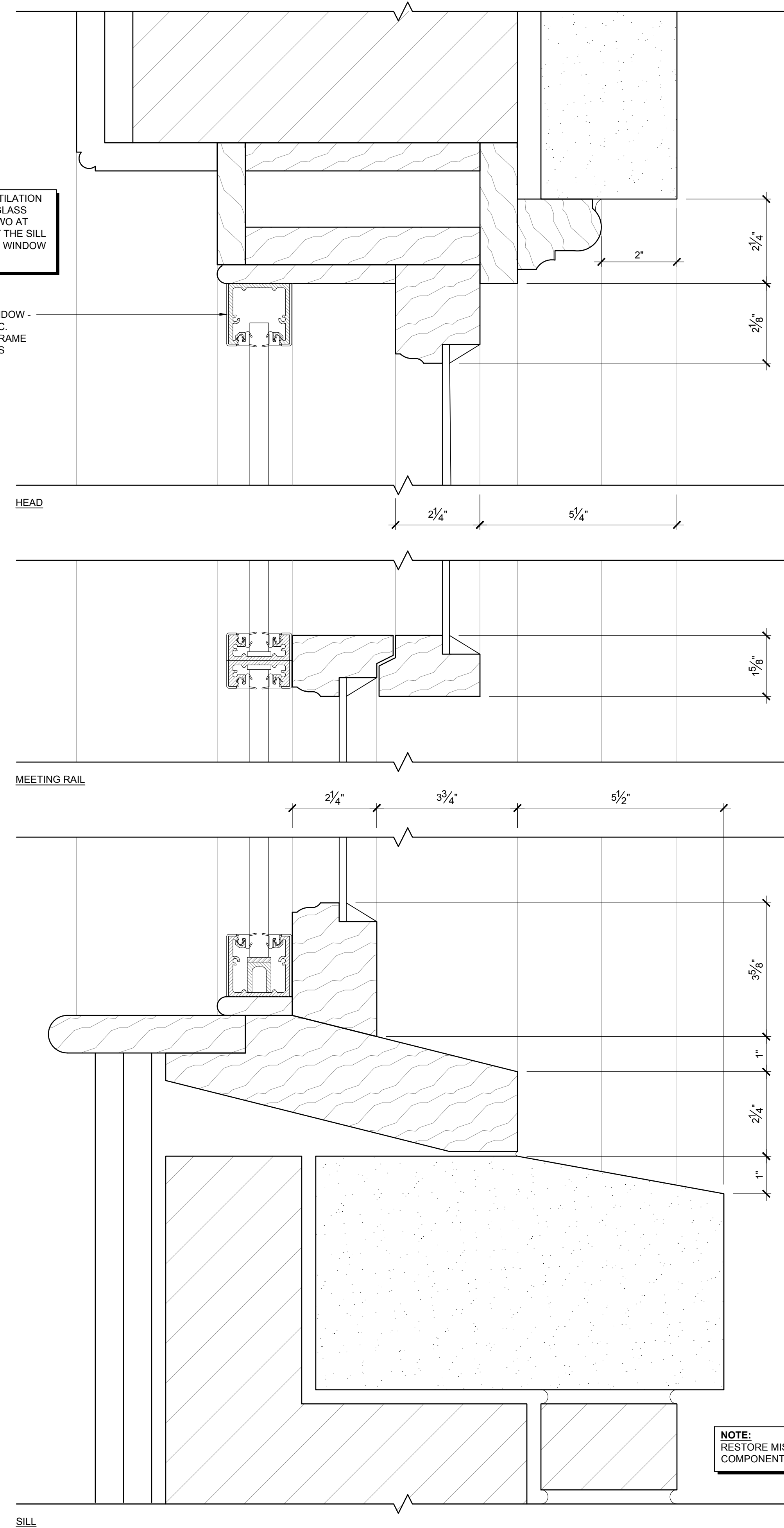
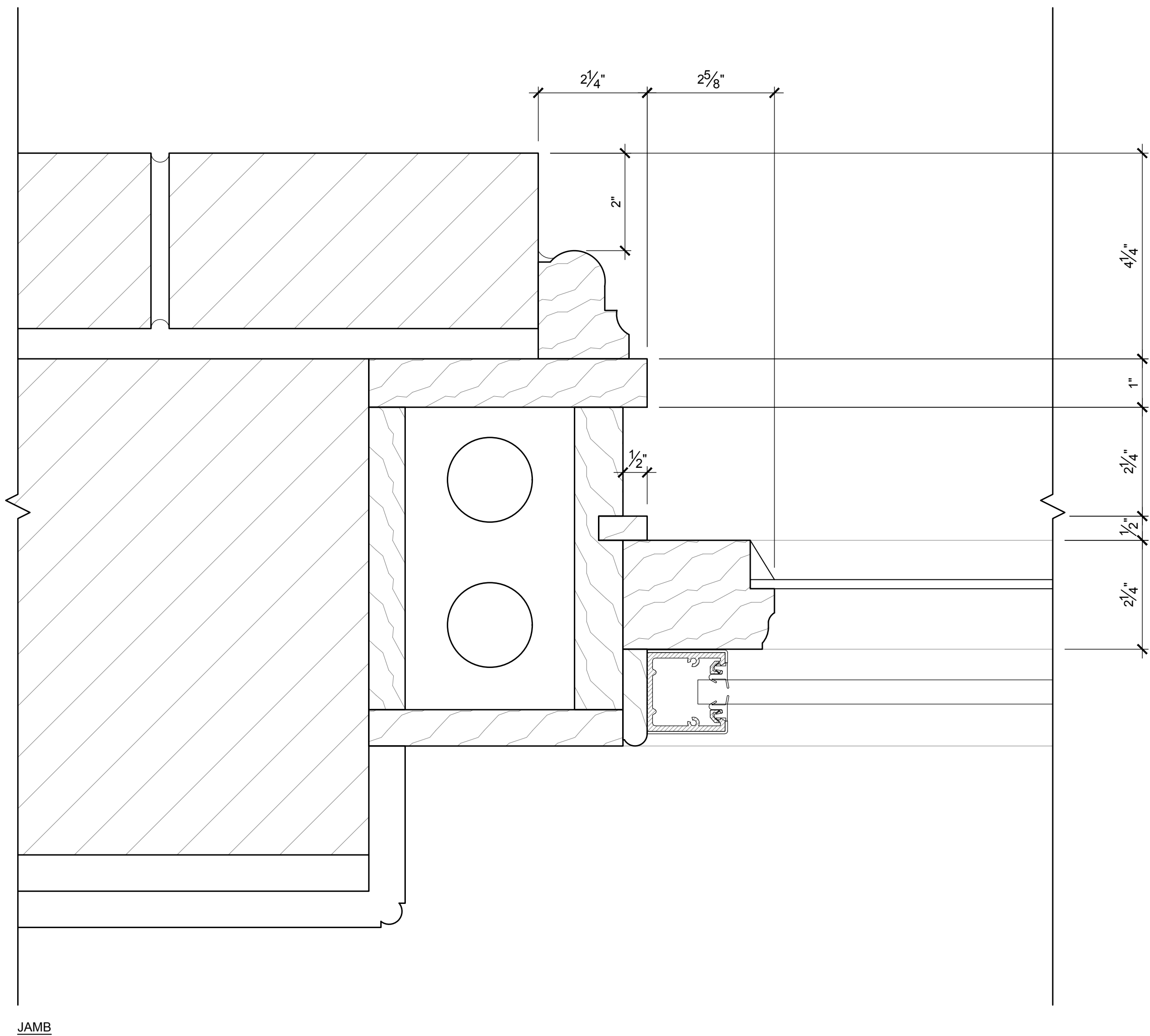
A-501

DO NOT SCALE DRAWING

NOTE: PROVIDE 1" VENTILATION SLITS AT ALL LEADED GLASS WINDOW OPENINGS. TWO AT THE HEAD AND TWO AT THE SILL - FOUR TOTAL AT EACH WINDOW LOCATION.

NEW FIXED STORM WINDOW - C.R. LAURENCE CO., INC. U-CHANNEL GLAZING FRAME WITH TEMPERED GLASS

NOTE: RESTORE MISSING / DETERIORATED COMPONENTS AS NEEDED



1 EXISTING WOOD WINDOW DETAILS
6"=1'-0"

CONSULTANTS:

PROJECT:

HISTORIC FACADE RESTORATION

14 BEACON STREET
BOSTON, MA 02108

CLIENT:

FAROS PROPERTIES

20 ASHBURTON PLACE, 2ND FLOOR
BOSTON, MA 02108

NOT FOR CONSTRUCTION

PROFESSIONAL

PREPARED BY A LICENSED ARCHITECT

Any changes to this item can be a violation of the law unless altered by a licensed architect. Any alteration made to this item must be accompanied by a specific description of change or changes made; date change was made, as well as the seal of the licensed architect who made or oversaw the changes.

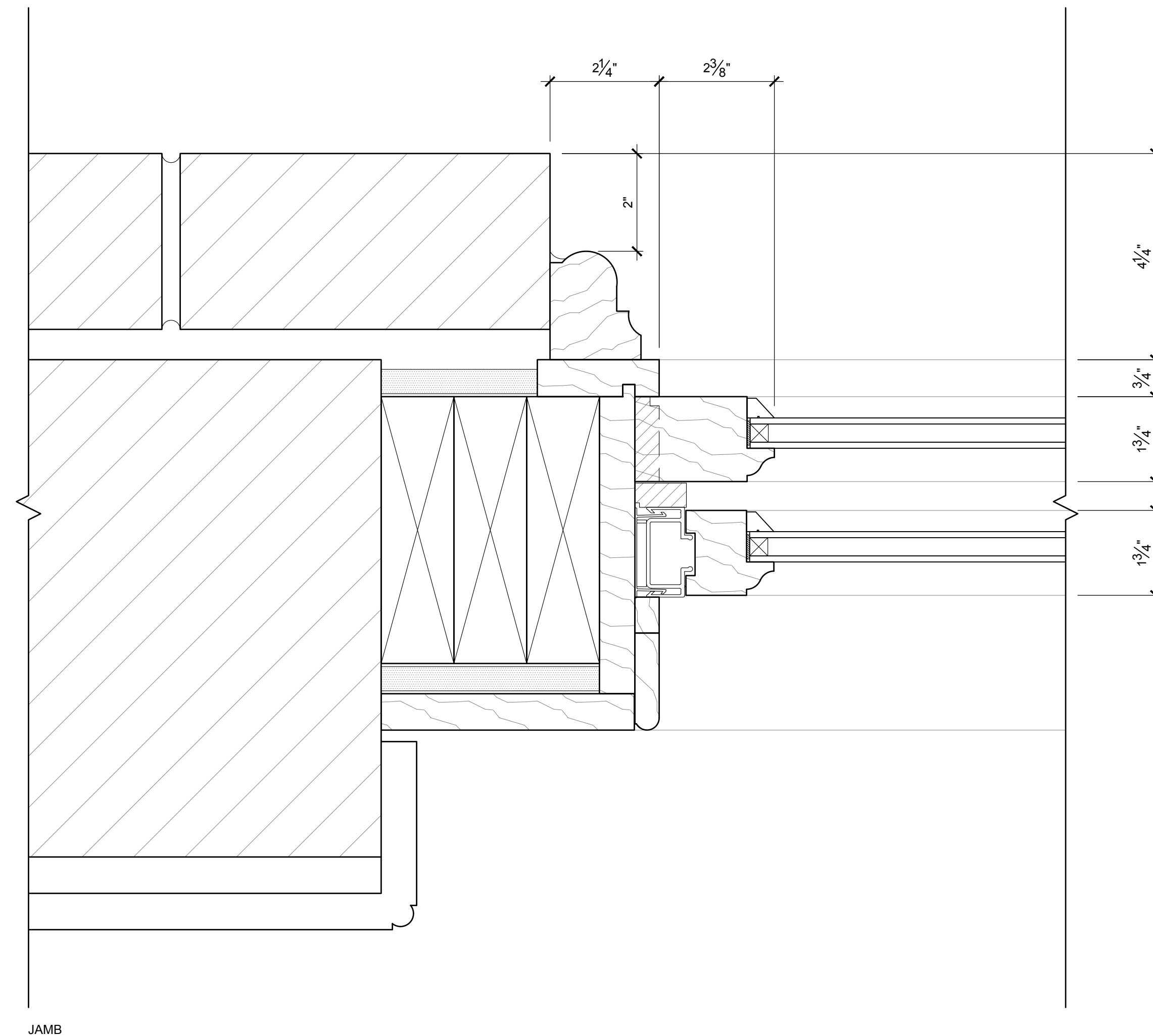
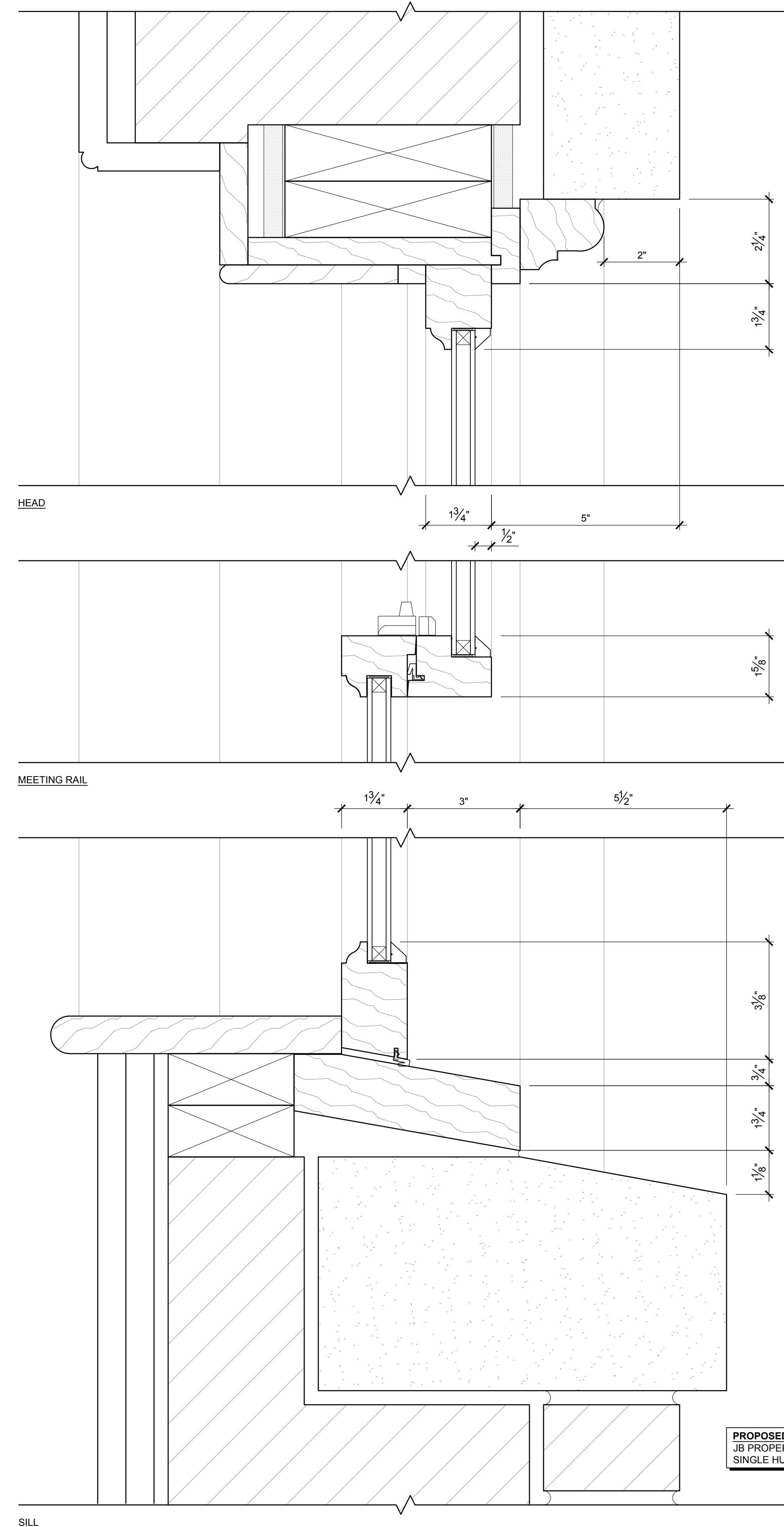
MARK	DATE	DESCRIPTION

PROJECT NO.:	18034
DRAWN BY:	LAW
CHECKED BY:	SAW
DRAWING SCALE:	6"=1'-0"

SHEET TITLE:
PROPOSED WOOD WINDOWS DETAILS

SHEET:
A-503

DO NOT SCALE DRAWING



1 PROPOSED WOOD WINDOW DETAILS
6"=1'-0"

CONSULTANTS:

PROJECT:

**HISTORIC
FACADE
RESTORATION**

14 BEACON STREET
BOSTON, MA 02108

CLIENT:

**FAROS
PROPERTIES**

20 ASHBURTON PLACE, 2ND FLOOR
BOSTON, MA 02108

**NOT FOR
CONSTRUCTION**

PROFESSIONAL

PREPARED BY A LICENSED ARCHITECT

Any changes to this item can be a violation of the law unless altered by a licensed architect. Any alteration made to this item must be accompanied by a specific description of change or changes made; date change was made, as well as the seal of the licensed architect who made or oversaw the changes.

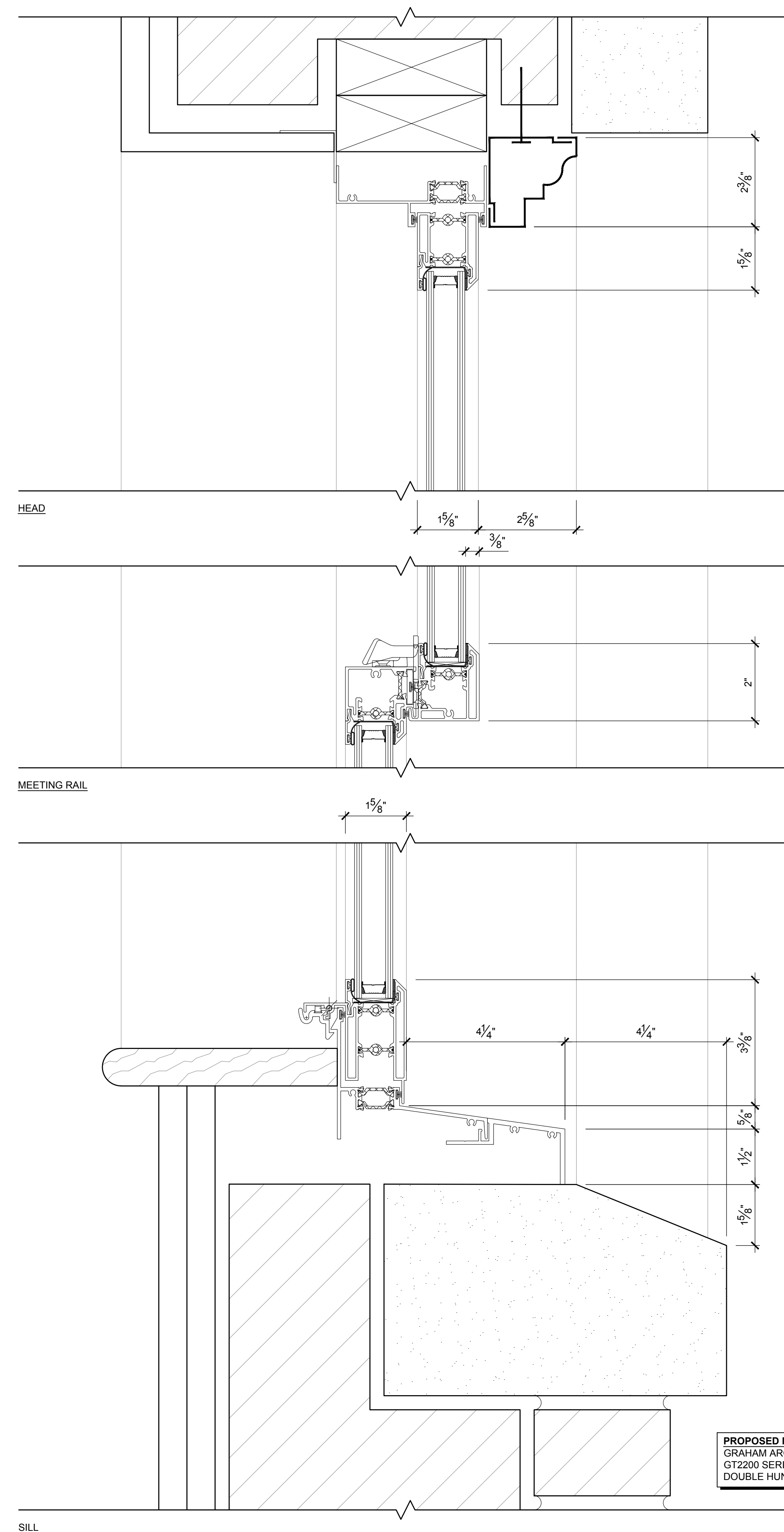
MARK	DATE	DESCRIPTION

PROJECT NO.:	18034
DRAWN BY:	LAW
CHECKED BY:	SAW
DRAWING SCALE:	6"=1'-0"

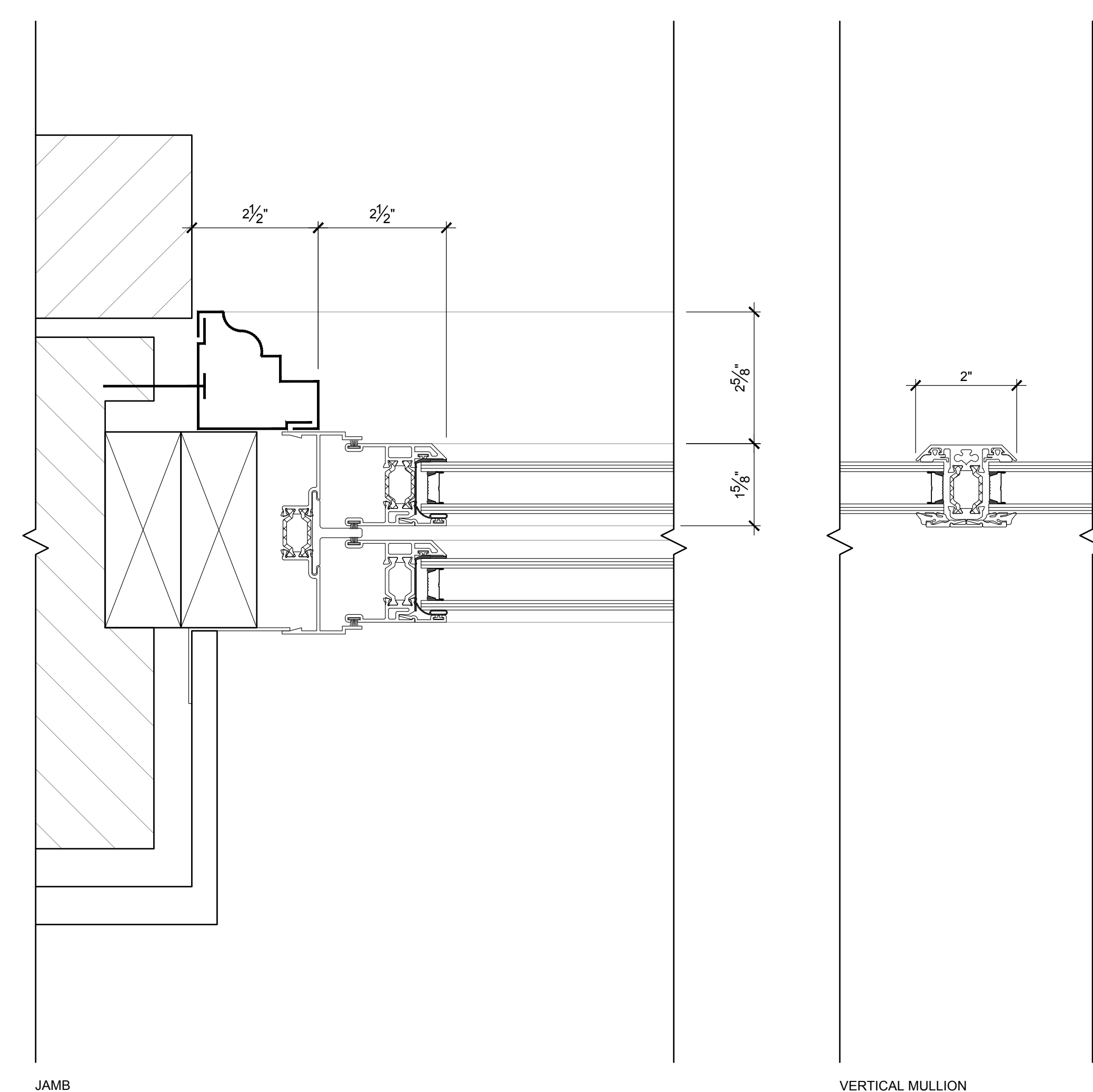
SHEET TITLE:
**PROPOSED
METAL WINDOW
DETAILS**

SHEET:
A-505

DO NOT SCALE DRAWING



PROPOSED METAL WINDOW:
GRAHAM ARCHITECTURAL PRODUCTS
GT2200 SERIES
DOUBLE HUNG 1" HISTORIC GLAZING



1 PROPOSED METAL WINDOW DETAILS
6"=1'-0"

CONSULTANTS:

PROJECT:

HISTORIC FACADE RESTORATION

14 BEACON STREET
BOSTON, MA 02108

CLIENT:

FAROS PROPERTIES

20 ASHBURTON PLACE, 2ND FLOOR
BOSTON, MA 02108

NOT FOR CONSTRUCTION

PROFESSIONAL

PREPARED BY A LICENSED ARCHITECT

Any changes to this item can be a violation of the law unless altered by a licensed architect. Any alteration made to this item must be accompanied by a specific description of change or changes made; date change was made, as well as the seal of the licensed architect who made or oversaw the changes.

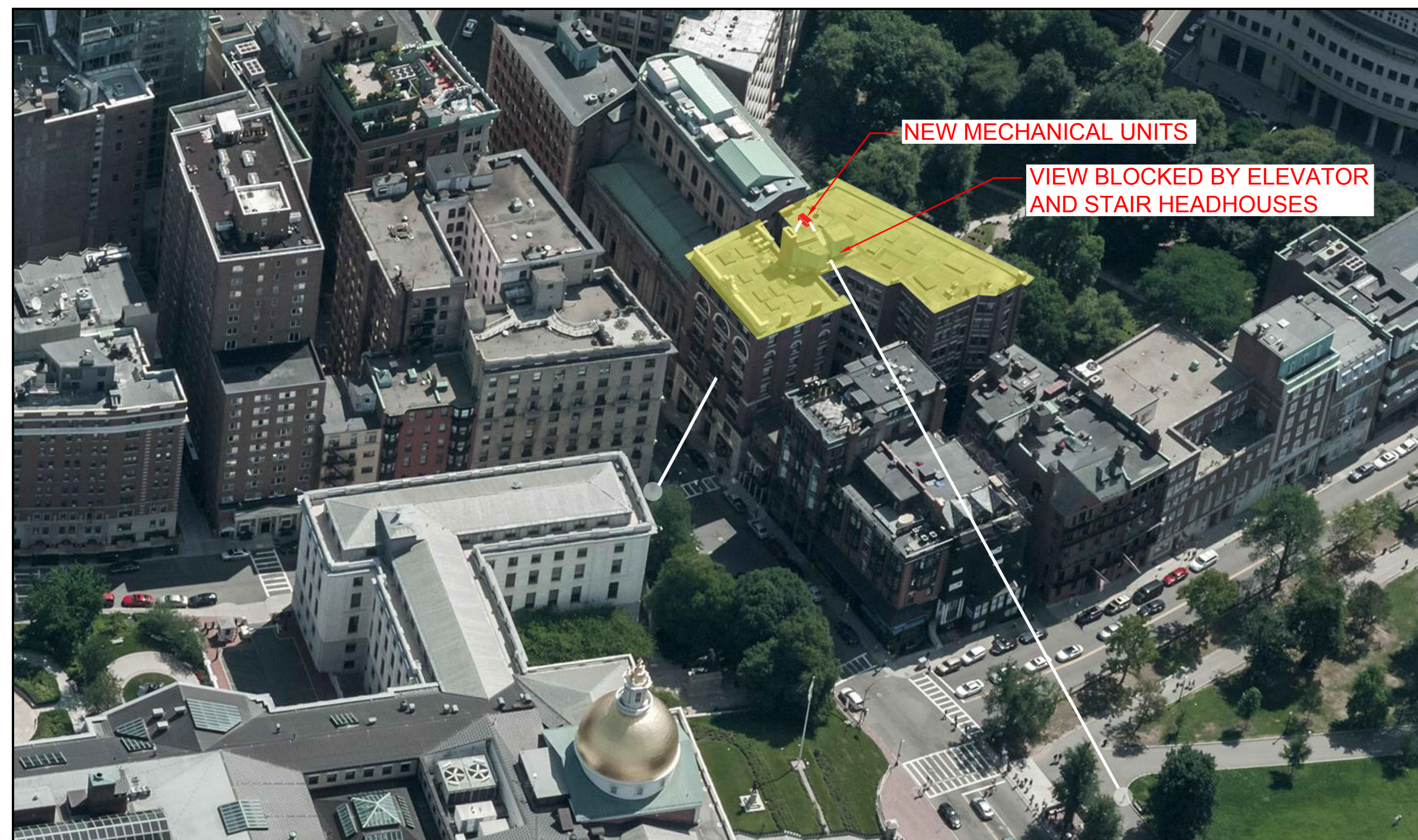
MARK	DATE	DESCRIPTION

PROJECT NO.:	18034
DRAWN BY:	LAW
CHECKED BY:	SAW
DRAWING SCALE:	N.T.S.

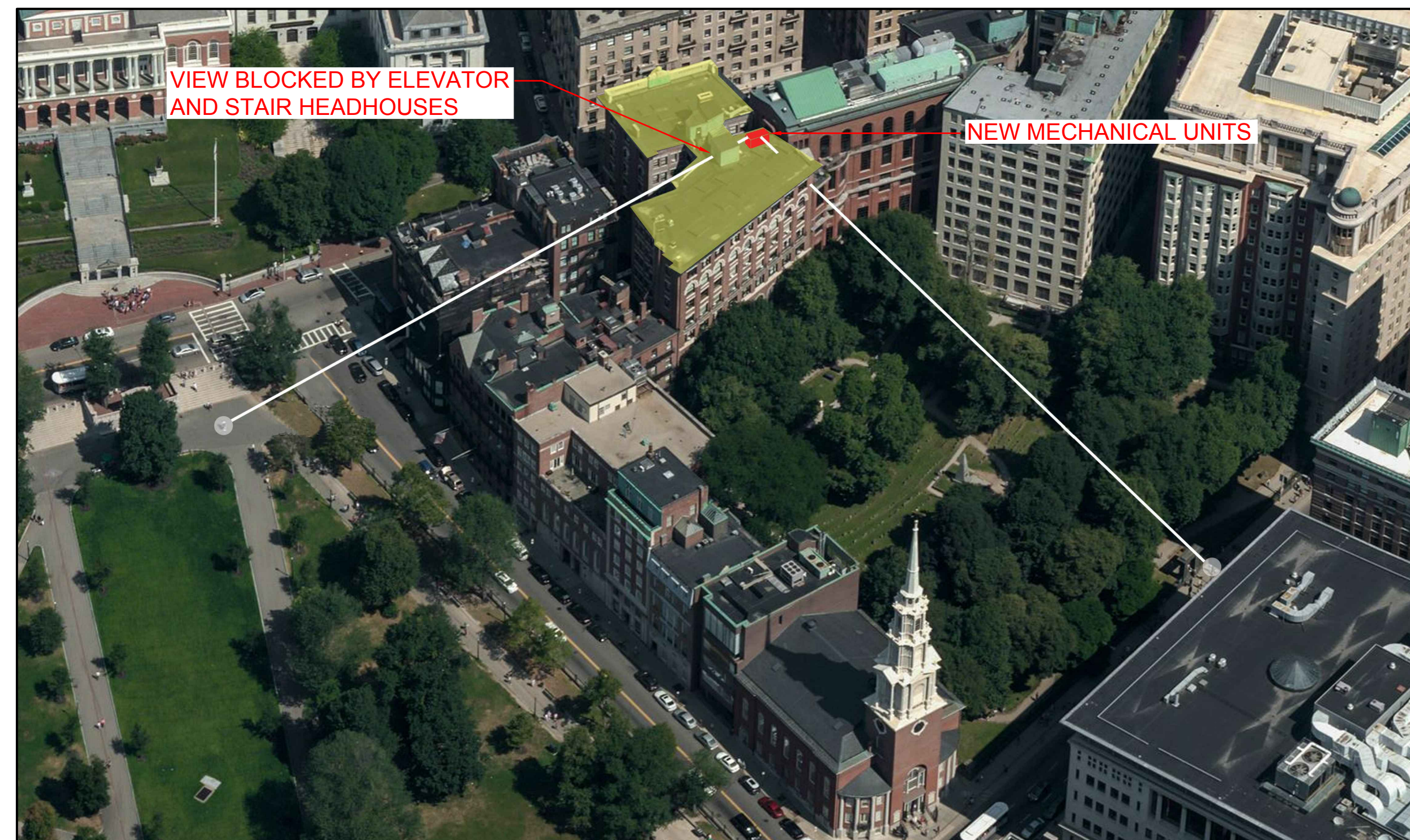
SHEET TITLE:
SIGHT LINE STUDY

SHEET:
A-901

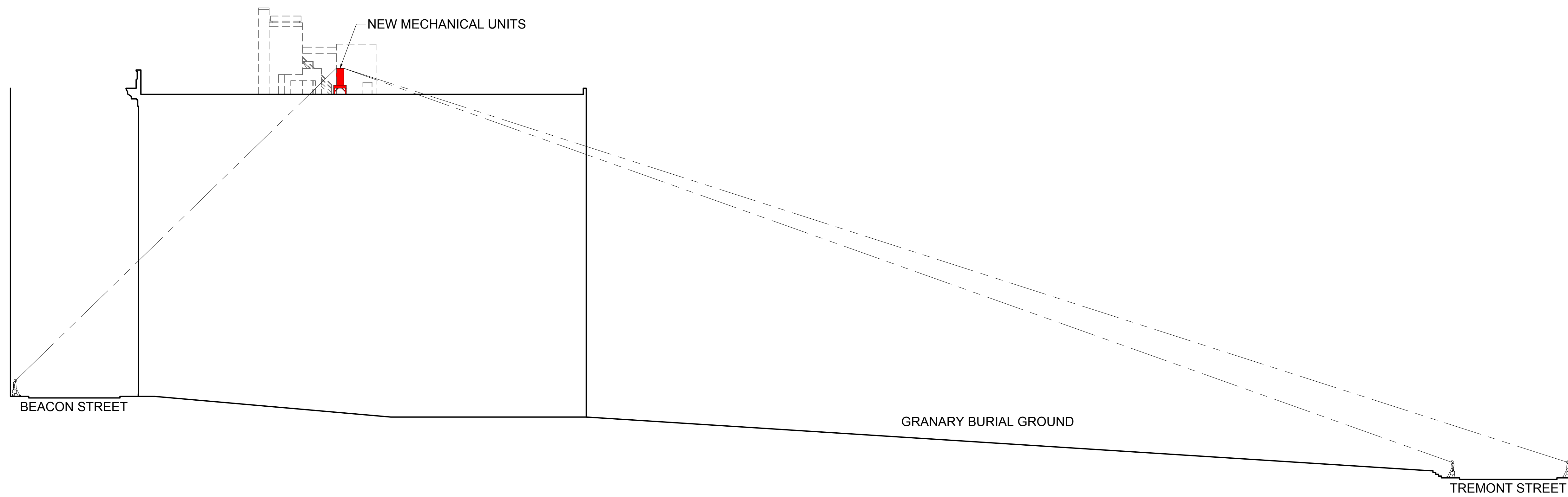
DO NOT SCALE DRAWING



3 SIGHT LINE STUDY FROM BEACON ST. AND THE BOSTON COMMON
N.T.S.



2 SIGHT LINE STUDY FROM TREMONT ST. AND THE BOSTON COMMON
N.T.S.



1 NORTH-SOUTH SECTION SIGHT LINE DIAGRAM - VIEWS FROM TREMONT ST. AND BEACON ST.
N.T.S.

Drawing Name: 18-034-01-01034 - 14 Beacon St Historic Facade Restoration - Mechanical Units - 01034 - A-901 - Sightline Study.dwg
 Date: 04/25/2018 11:52:11am
 User: J. Saw
 Plot Date: 04/25/2018 11:52:11am
 Plot User: J. Saw
 Plot Device: HPGL
 Plot Path: C:\Users\j.saw\AppData\Local\Temp\18-034-01-01034 - 14 Beacon St Historic Facade Restoration - Mechanical Units - 01034 - A-901 - Sightline Study.dwg

COPYRIGHT © STEPHEN J. WESSLING ARCHITECTS INC. 2018