

112 CHARLES ST

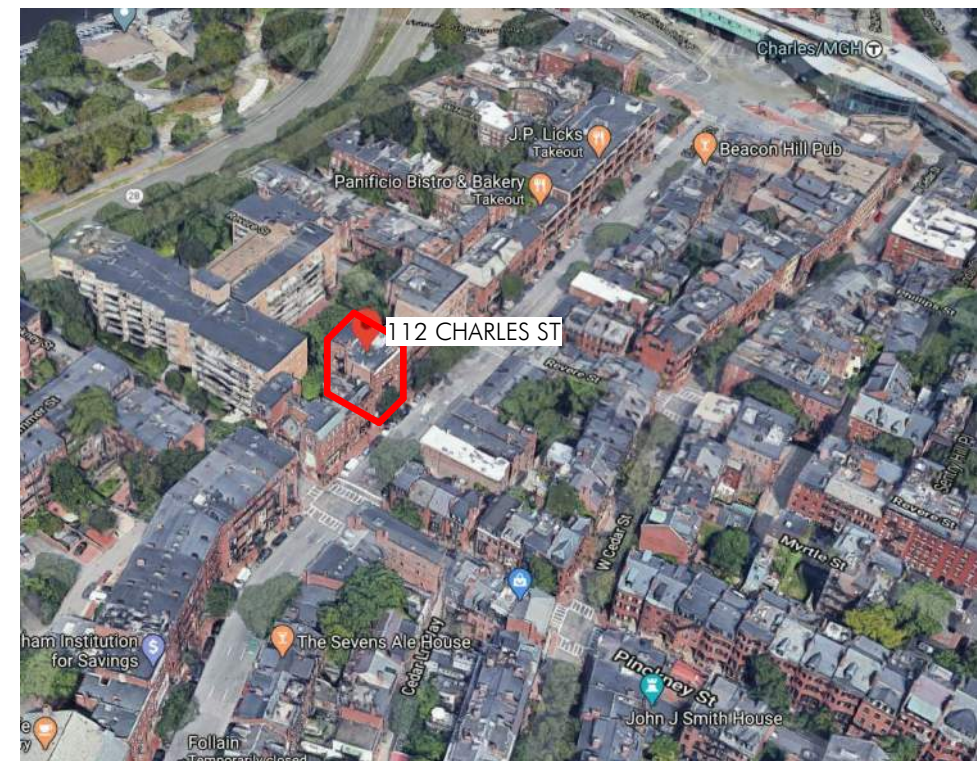
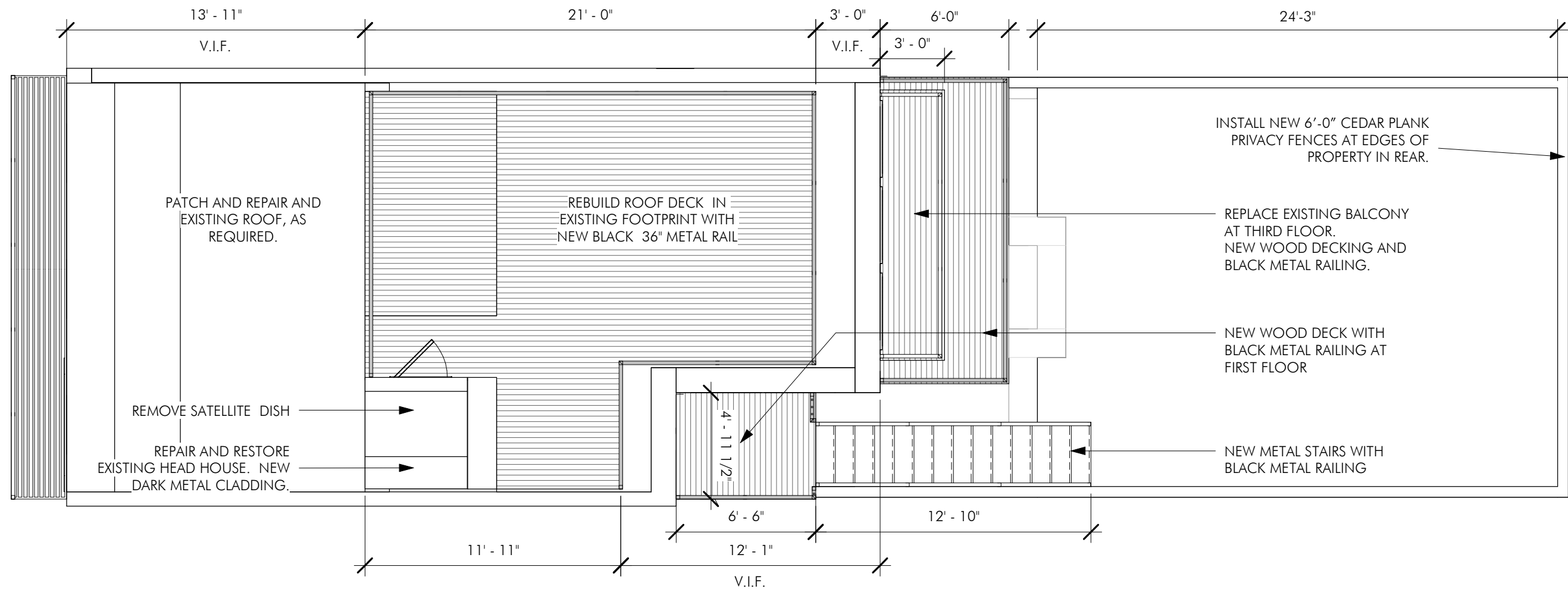
BOSTON, MA 02114

BEACON HILL ARCHITECTURAL DISTRICT

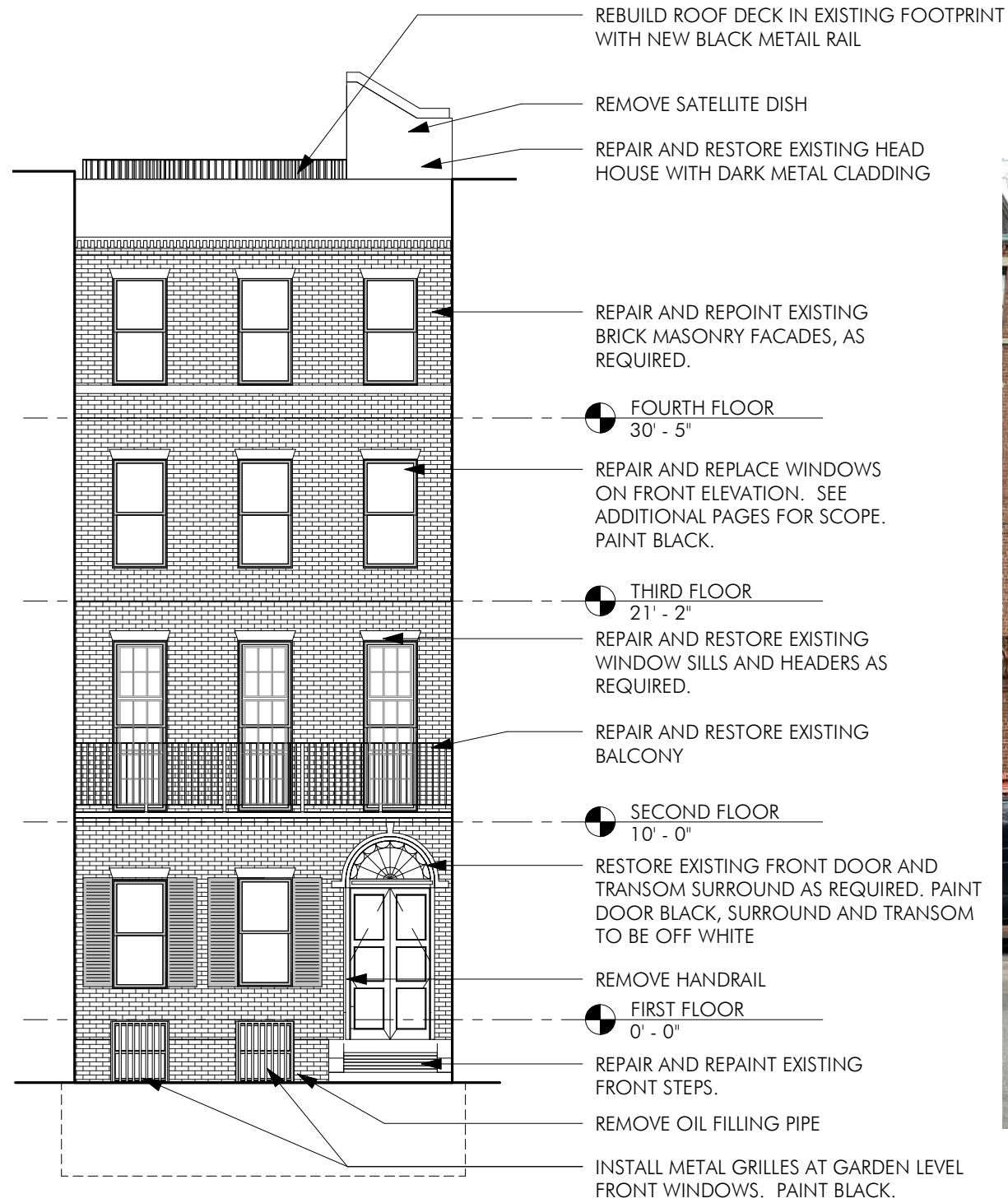
5/28/2020



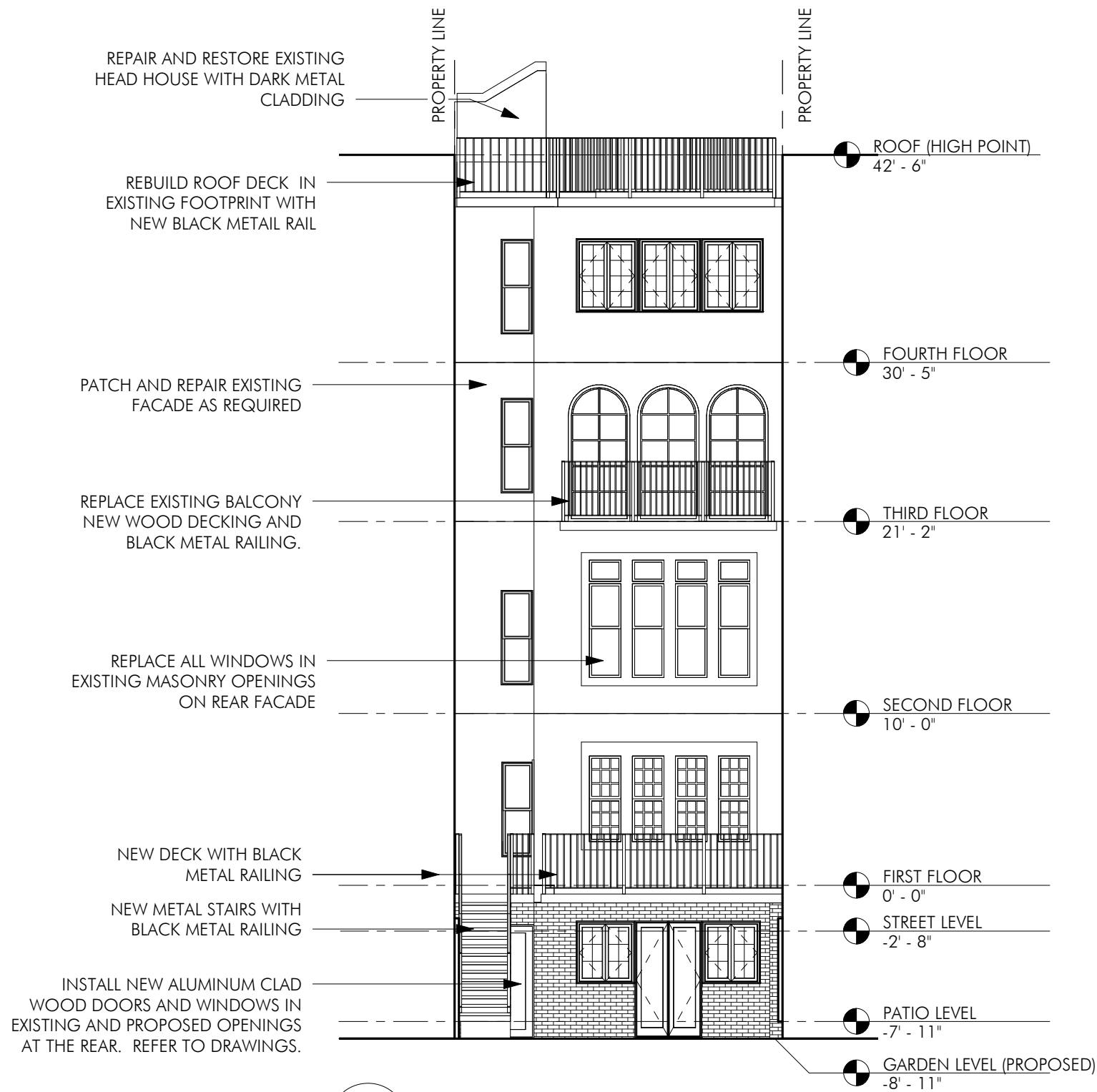
EMBARC







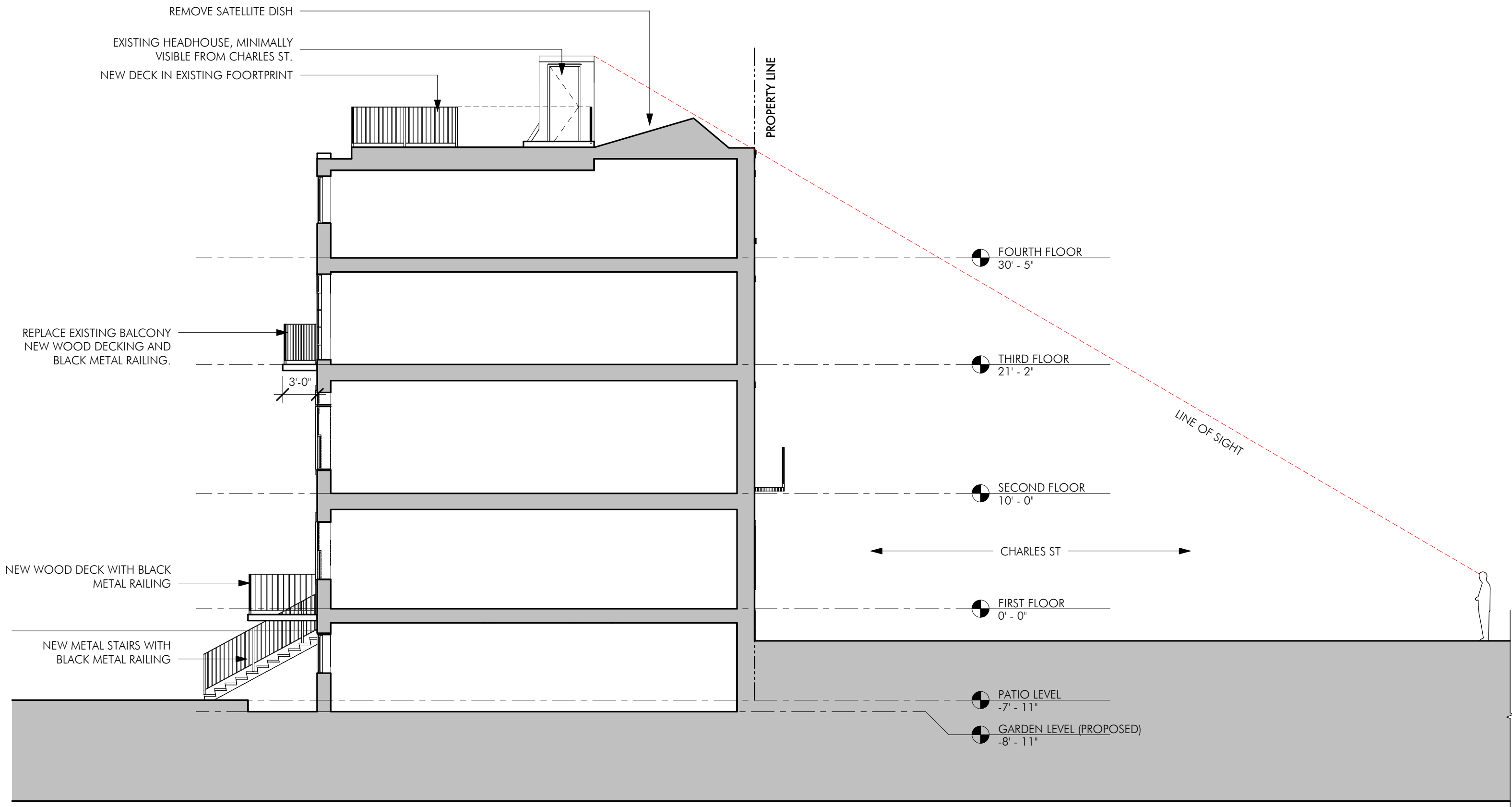
2 CHARLES STREET ELEVATION
1/8" = 1'-0"

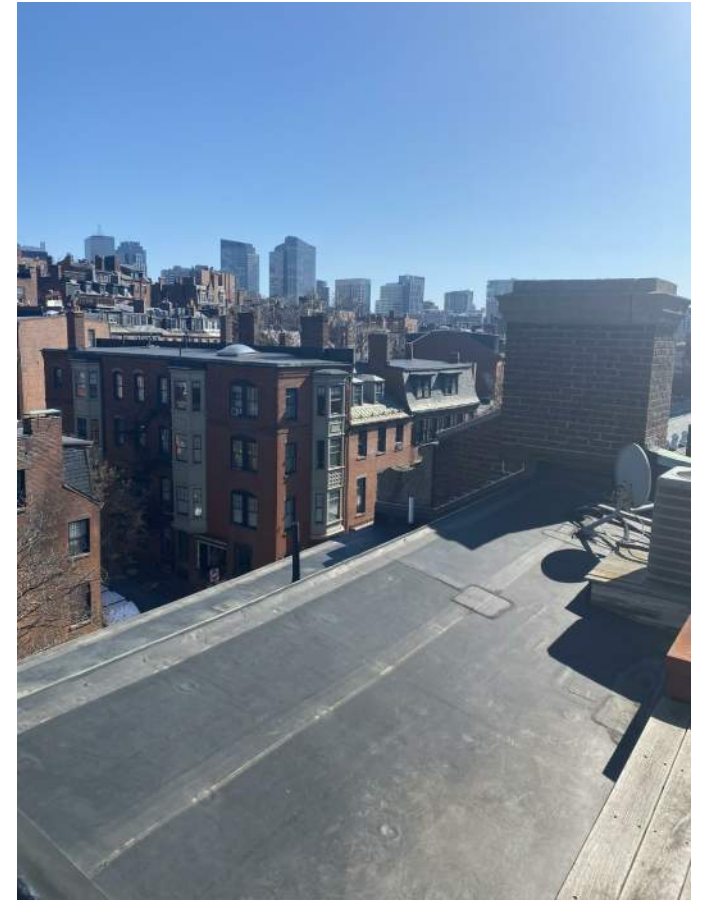


1 LANDMARKS - REAR ELEVATION
1/8" = 1'-0"



NOTE: REAR ELEVATION NOT VISIBLE FROM ANY PUBLIC RIGHT-OF-WAY







INSTALL NEW 2" RECESSED LIGHT WITH ADJUSTABLE TRIM

CLEAN AND REPAINT PANELED ENTRY WAY. BENJAMIN MOORE HC-83 "GRANT BEIGE"

POLISH AND CLEAN EXISTING HOUSE NUMBERS

REMOVE APPLIED FRAME AND HOUSE NUMBERS

CLEAN AND REPAINT EXISTING DOORS. BENJAMIN MOORE HC-190 "BLACK"

REPLACE DOOR HARDWARE BALDWIN "BLAKELEY" ENTRY SET IN UNLACQUERED BRASS

POLISH AND CLEAN EXISTING MAIL SLOT

REMOVE INTERCOM, SIGNAGE, DOORBELLS, AND HANDRAIL
INSTALL NEW INTERCOM IN BRASS FINISH



REMOVE INTERCOM, SIGNAGE, DOORBELLS, AND HANDRAIL
INSTALL NEW INTERCOM IN BRASS FINISH



REMOVE APPLIED FRAME AND HOUSE NUMBERS



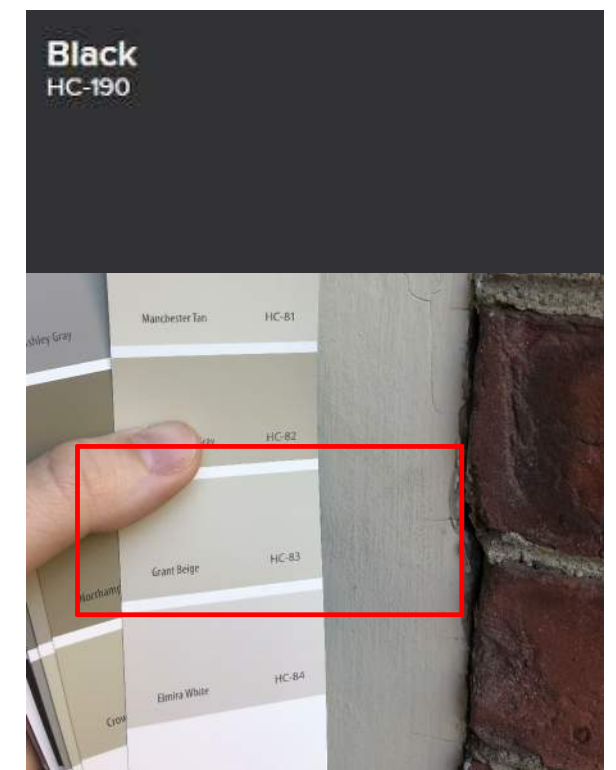
DOORBIRD 3-UNIT INTERCOM

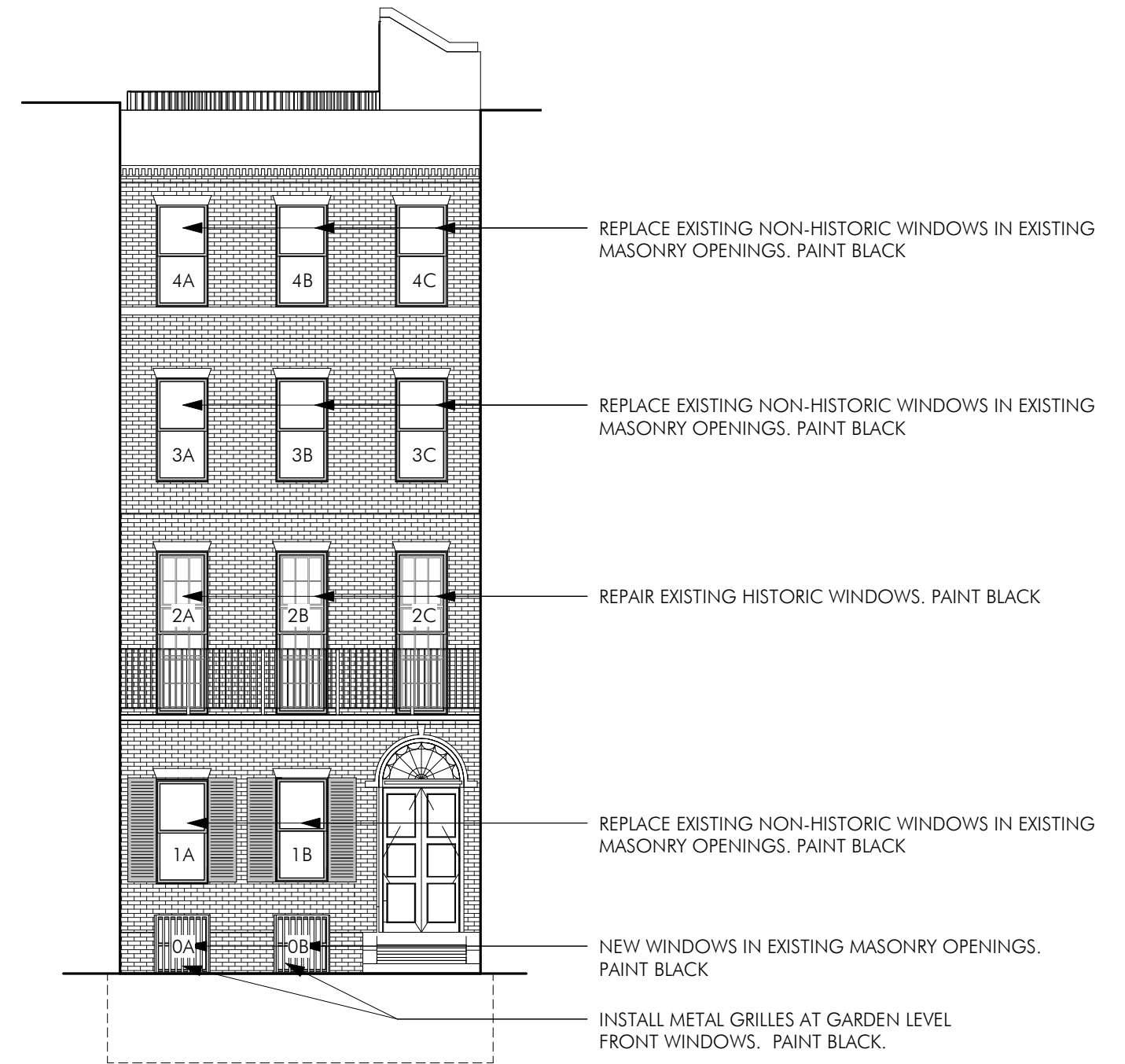


BALDWIN BLAKELEY ENTRY SET UNLACQUERED BRASS FINISH



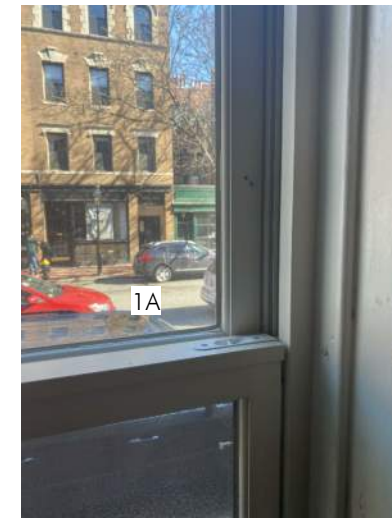
JUNO LIGHTING 2" ADJUSTABLE RECESSED LIGHT TO BE INSTALLED ON TIMER AND DIMMER



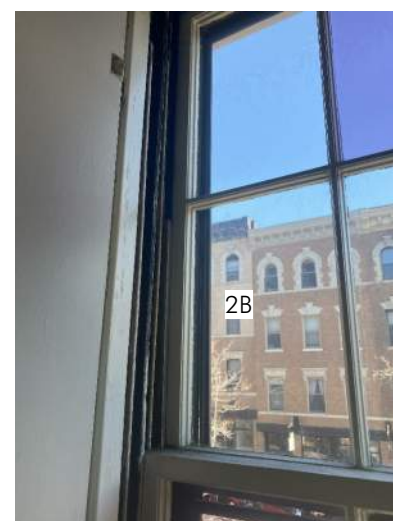


WINDOWS 0A, 0B, 1A, 1B, 3A, 3B, 3C, 4A, 4B, 4C TO BE NEW WINDOWS IN EXISTING MASONRY OPENINGS.
 WINDOWS 2, 2B, 2C TO BE RESTORED AND PAINTED BLACK.

FIRST FLOOR WINDOWS - REPLACE



SECOND FLOOR WINDOWS - RESTORE



WINDOWS 0A, 0B, 1A, 1B, 3A, 3B, 3C, 4A, 4B, 4C TO BE NEW WINDOWS IN EXISTING MASONRY OPENINGS.
WINDOWS 2, 2B, 2C TO BE RESTORED AND PAINTED BLACK.

THIRD FLOOR WINDOWS - REPLACE



FOURTH FLOOR WINDOWS - REPLACE



WINDOWS 0A, 0B, 1A, 1B, 3A, 3B, 3C, 4A, 4B, 4C TO BE NEW WINDOWS IN EXISTING MASONRY OPENINGS.
WINDOWS 2, 2B, 2C TO BE RESTORED AND PAINTED BLACK.



NEW WINDOWS AT GARDEN LEVEL IN EXISTING MASONRY OPENINGS

