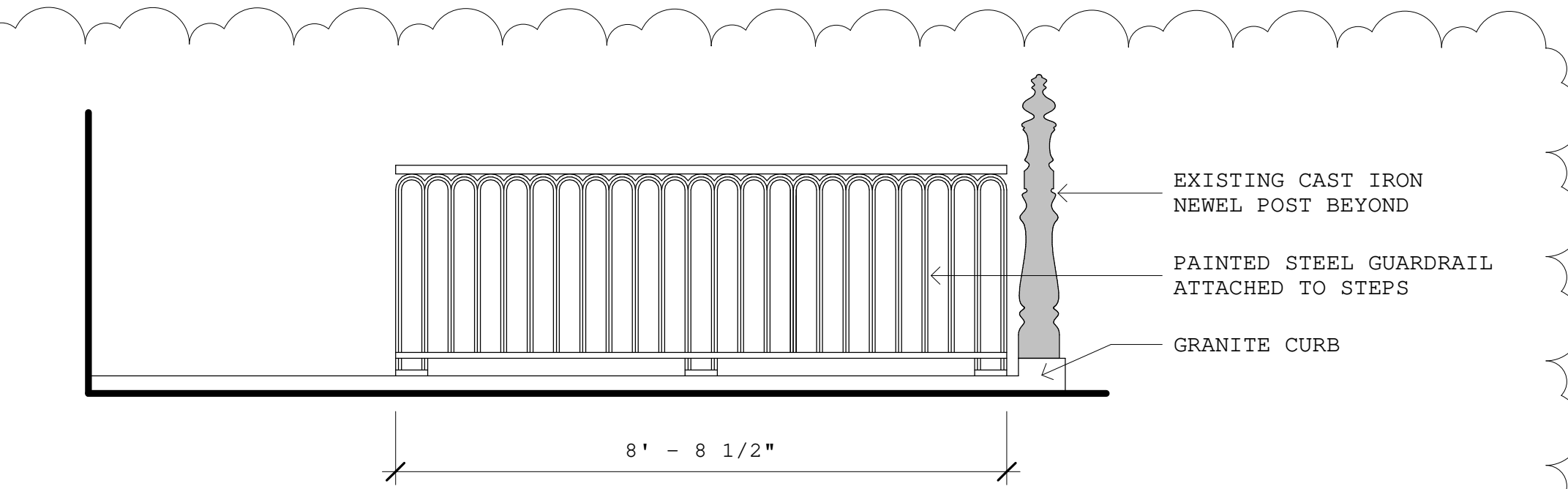
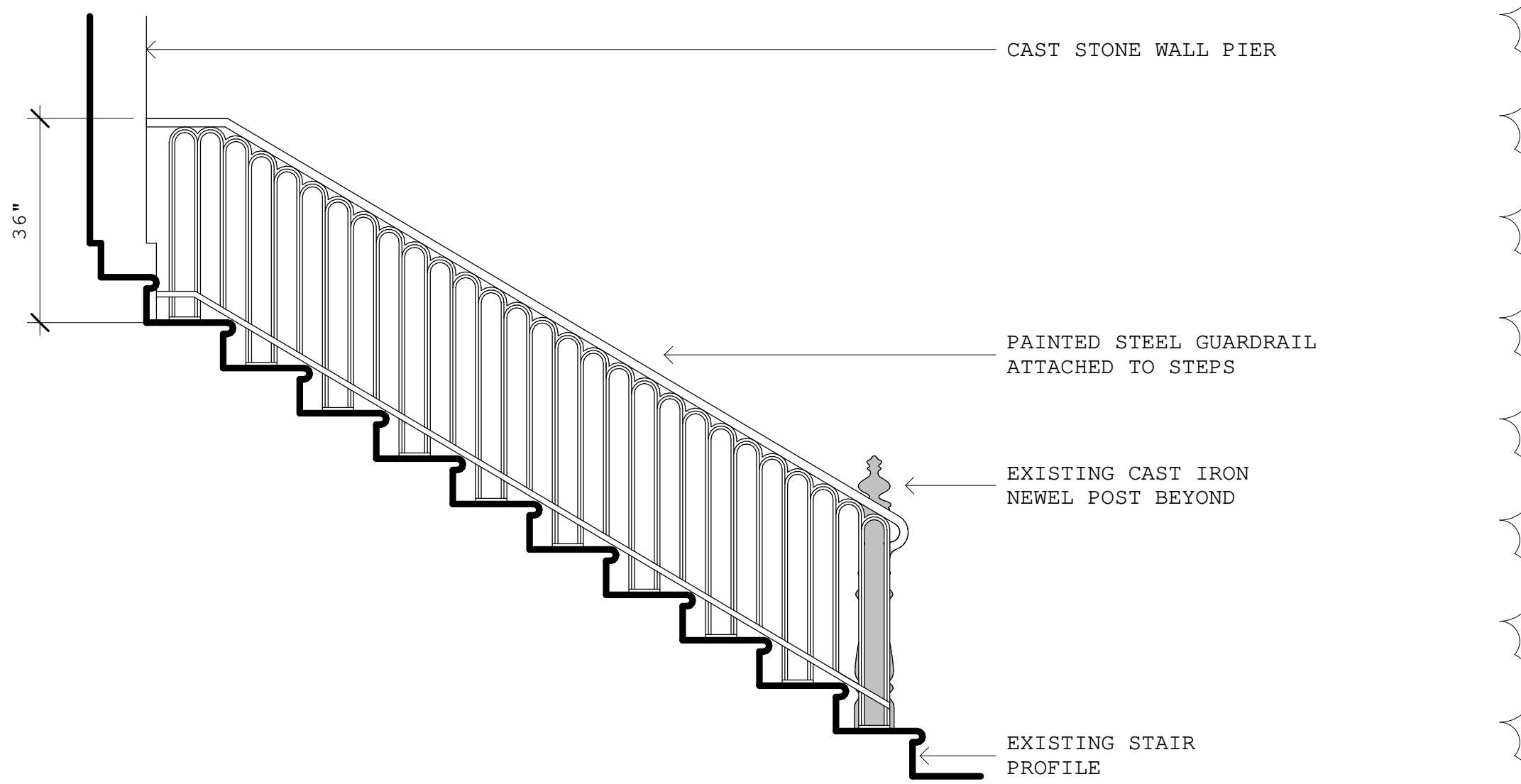


REVISIONS

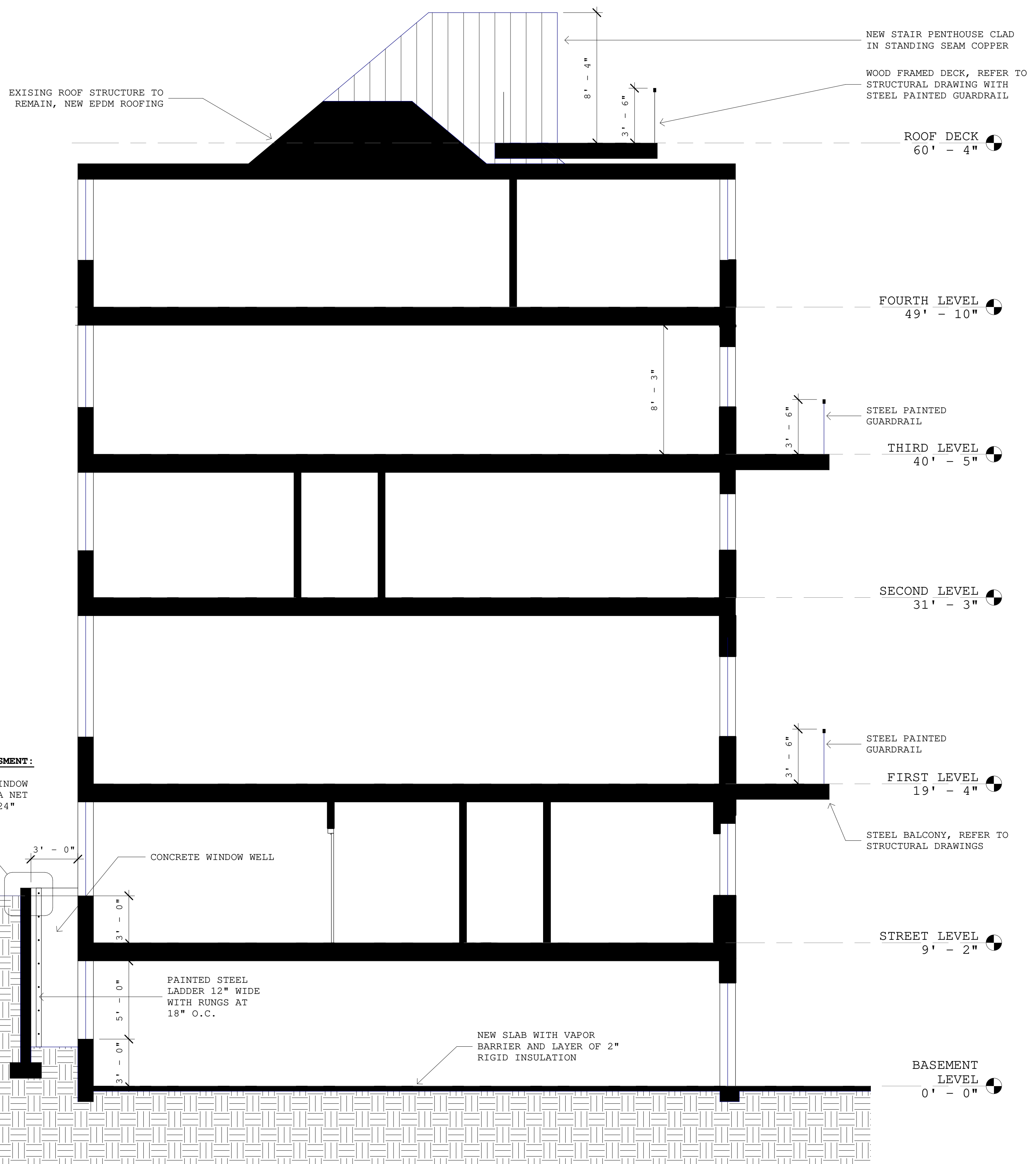
| |
|-----------------------------|
| REVISION NO.1 - 11 FEB 2019 |
| REVISION NO.2 - 18 MAR 2019 |
| REVISION NO.3 - 1 AUG 2019 |
| REVISION NO.4 - 1 MAY 2020 |



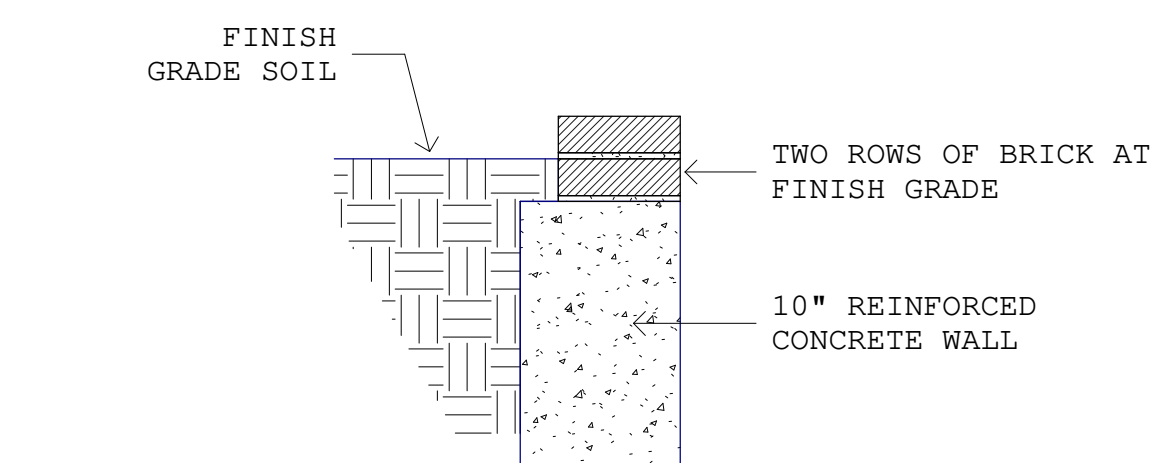
4 GARDEN RAILING
1/2" = 1'-0"



3 FRONT EXTERIOR STAIR RAILING
1/2" = 1'-0"



EMERGENCY ESCAPE FROM BASMENT:
NEW WINDOW SINGLE HUNG WINDOW 36" WIDE, 60" HIGH WITH A NET CLEAR OPENING HEIGHT OF 24"



2 TOP OF WINDOW WELL
1" = 1'-0"

1 BUILDING SECTION
1/4" = 1'-0"



NORBERTO A. Y. LEON
REGISTERED ARCHITECT - MASS
LICENSE 20303
DATE: 13 FEBRUARY 2019

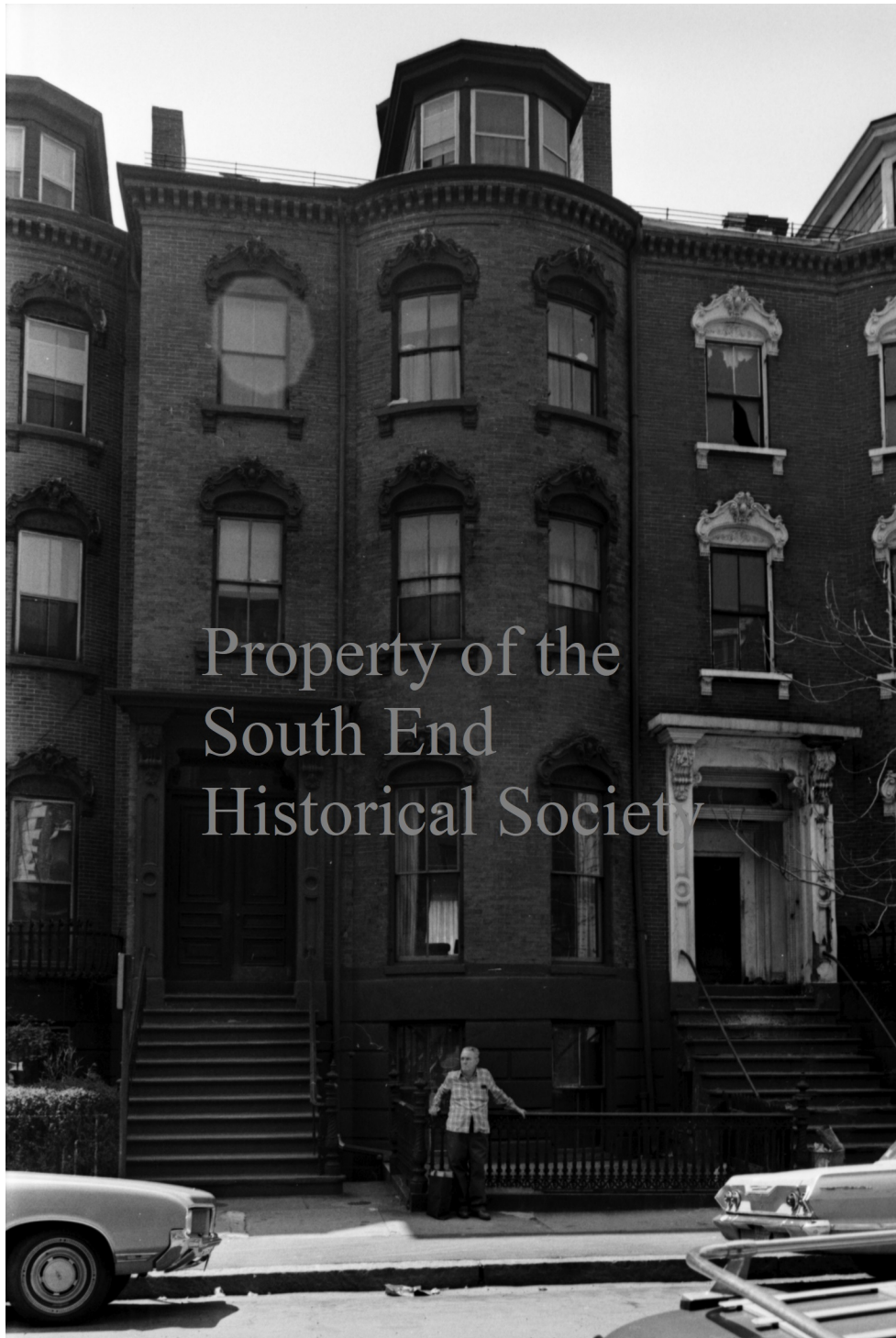
CLIENT:
HIGHLINE DEVELOPMENT
BOSTON, MA

SECTION & DETAILS

A301







Property of the
South End
Historical Society