

73 MOUNT VERNON STREET

BEACON HILL ARCHITECTURAL COMMISSION - DESIGN REVIEW PRESENTATION

APRIL 16, 2020



PARTERRE

GARDEN SERVICES

PREVIOUS AND EXISTING CONDITIONS

SITE PHOTOGRAPHS



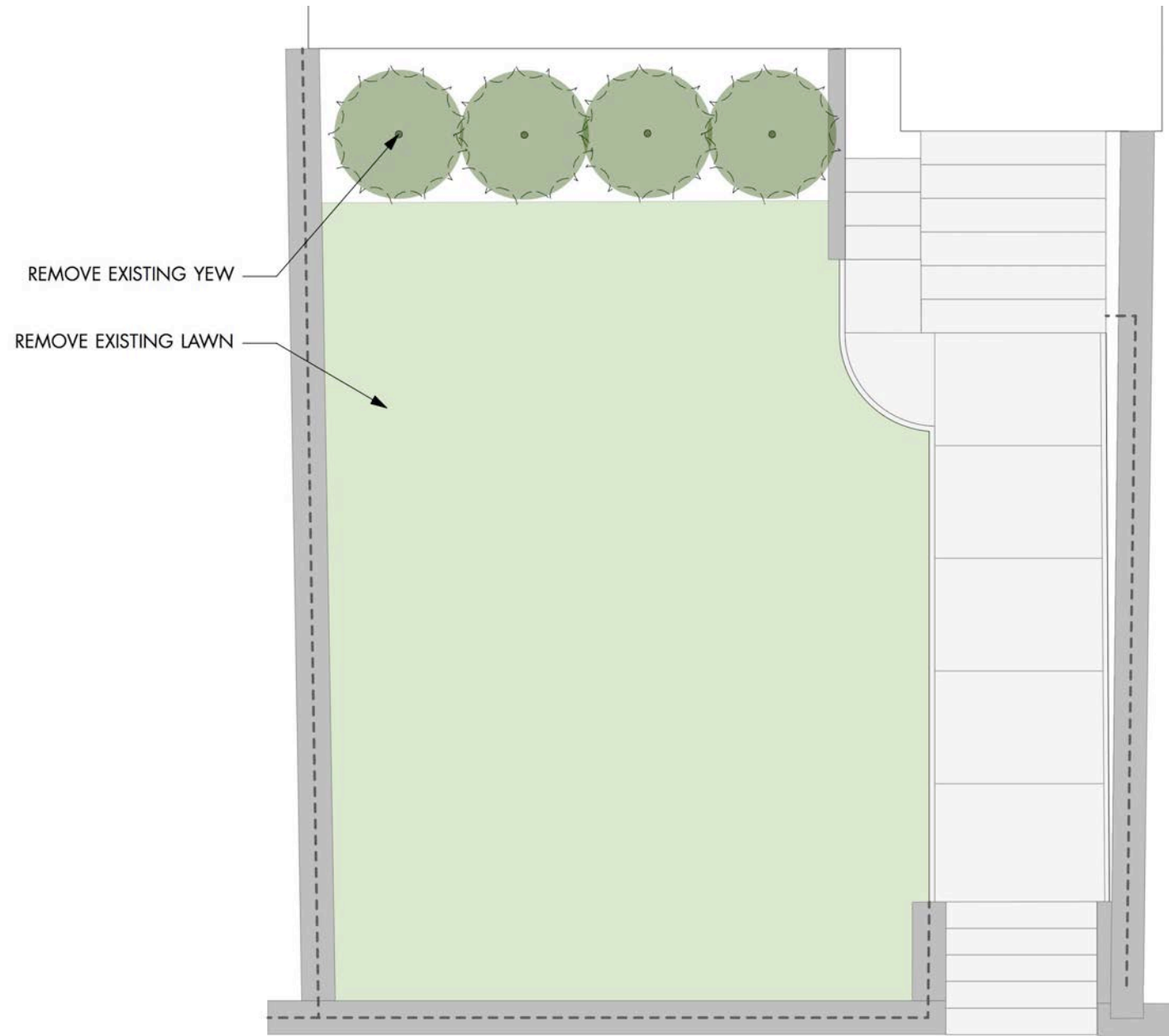
Google Street View image dated June 2009



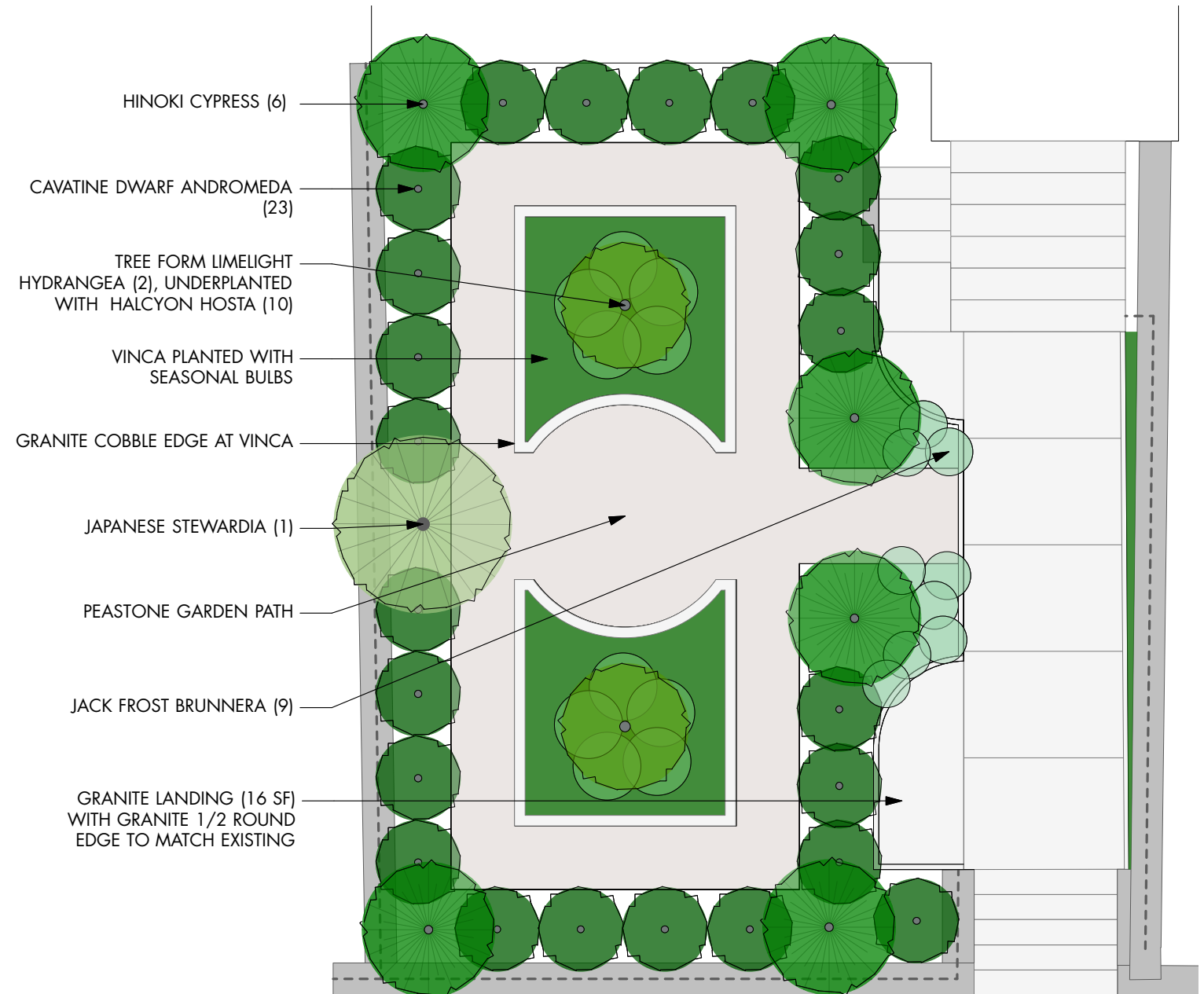
View from roof looking down to existing front lawn

EXISTING AND PROPOSED CONDITIONS

EXISTING SITE PLAN AND APPROVED SITE PLAN



Existing Conditions Plan



Plan Approved 2/20/2020

PROPOSED CONDITIONS

SITE FURNISHINGS PREVIOUSLY PROPOSED

BENCH



Longwood Main Fountain Garden Bench (GS)
BE-33 418 lbs
51.25"L x 19.00"W x 21.00"H



PLANTER



St. Louis Planter (AS)
P-631 409 lbs
38.00"W x 21.25"H

St. Louis Pedestal (AS)
PD-197 530 lbs
23.00"W x 28.00"H



LIGHTING



PROPOSED CONDITIONS

SITE FURSHINGS PRECEDENTS ON MOUNT VERNON + CHESTNUT STREETS

BENCHES



Bench at the Nichols House Museum, 55 Mount Vernon Street



Bench at 29A+B Chestnut Street



PROPOSED CONDITIONS

PROPOSED ALTERNATE BENCHES



Westland Bench



Classical Straight Bench



Woodland Ferns Straight Bench



PROPOSED CONDITIONS

SITE FURSHINGS PRECEDENTS ON MOUNT VERNON + CHESTNUT STREETS

PLANTERS ON PEDESTALS



PROPOSED CONDITIONS

PROPOSED ALTERNATE PLANTER

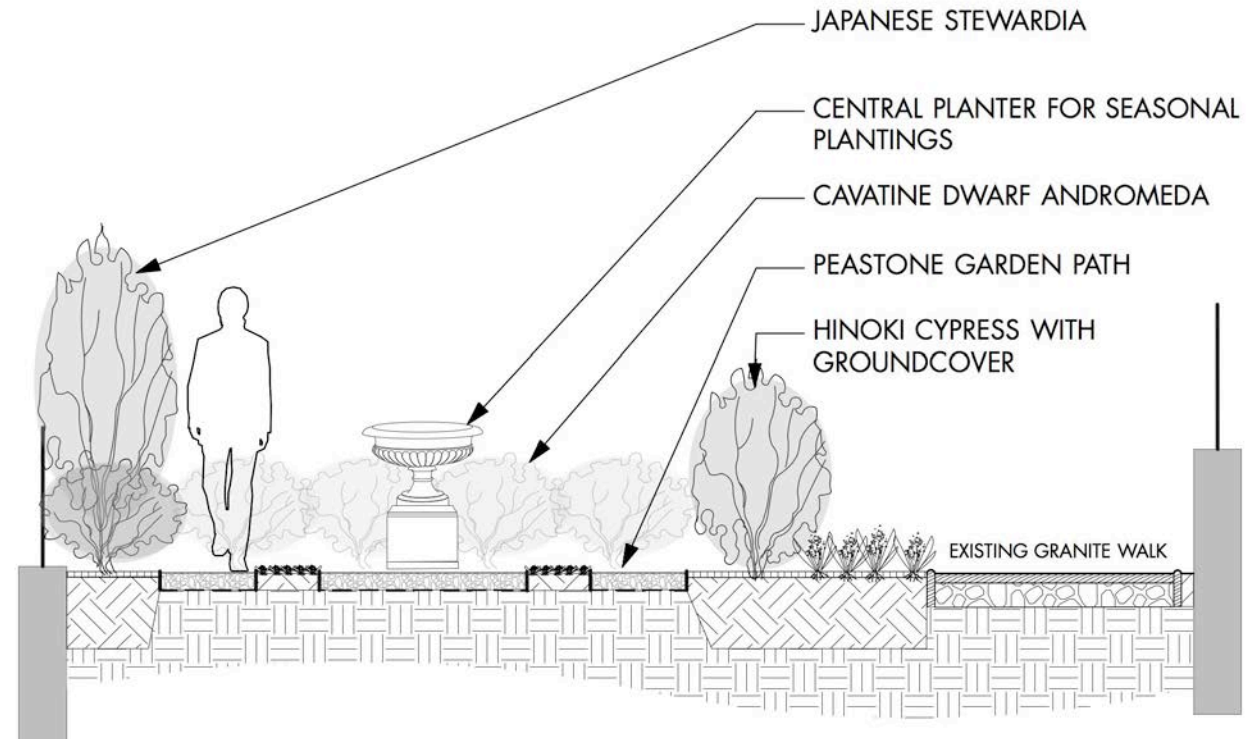


Kingscote Urn (GS)
 P-681 211 lbs
 30.25"W x 19.50"H



2 Rustic 16.5" Pedestal (AS)
 PD-224 193 lbs
 18.00"W x 16.50"H

Total Height = 36" (3')



PROPOSED CONDITIONS SECTION

SCALE: 1/4" = 1'-0"

PROPOSED CONDITIONS

SITE FURSHINGS PRECEDENTS ON MOUNT VERNON + CHESTNUT STREETS

EXTERIOR LIGHTING



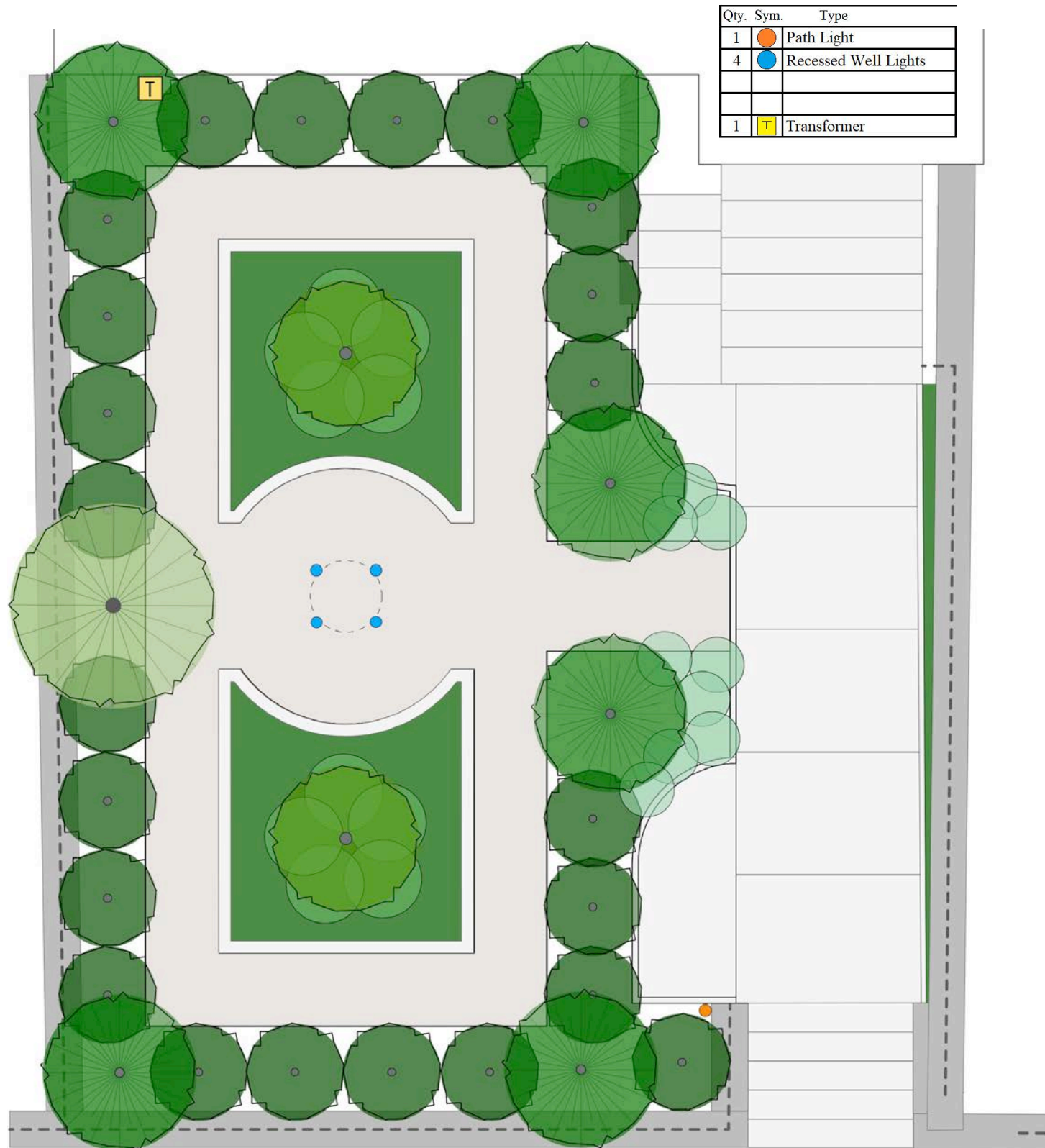
Lighting at the Nichols House Museum, 55 Mount Vernon Street



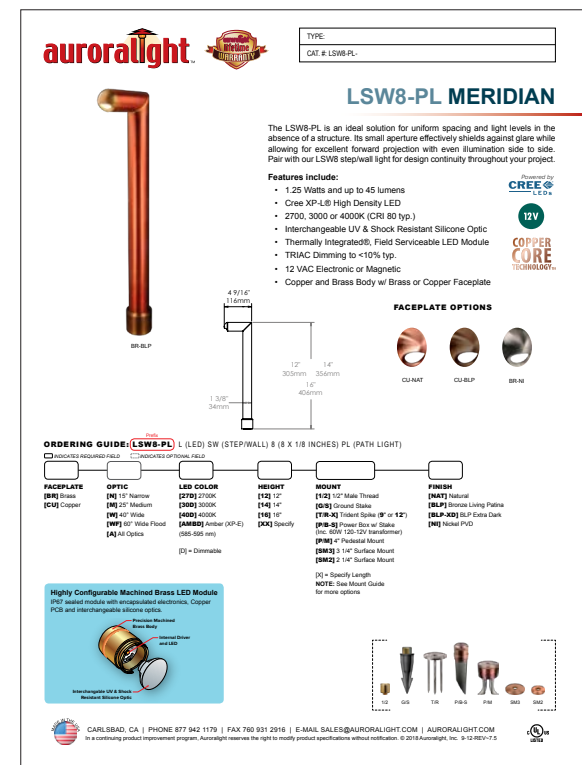
29A+B Chestnut Street

PROPOSED CONDITIONS

PROPOSED LIGHTING PLAN WITH ALTERNATE FIXTURES



Alternate Recessed Well Light



Alternate options for Path Light installed behind granite garden post



Micro Nite™ / Style L Staff Star™
Shown in Black Chrome Finish (BCM)

PROPOSED CONDITIONS

PROPOSED ALTERNATE LIGHTING FIXTURES

Alternate Recessed Well Light

B-K LIGHTING | RECESSED GROUND




m² MINI-MICRO™ RECESSED UPLIGHT

"Every time we specify the Mini-Micro™ Recessed Uplight on a staircase, or along a wall, our clients have been ecstatic with the results. These small fixtures can add safety in areas where tripping might be a concern but do it in a stylish and refined way that's a bit unexpected in such a small profile. The fact that three material types are available in a highly efficient LED really shows B-K's forward thinking. The B-K Mini-Micro™ rocks!"

Gregg Mackell, 186 Lighting Design Group, BKU Fall 2010





MATERIAL



FOR USE WITH



Shown in Bronze Wrinkle (BZW) finish





2 1/4" Dia. (57mm)
8 7/8" (225mm)
1 5/8" Dia. (41mm)

See page 339 for Catalog ordering information.

120


B-K LIGHTING
Quality to Last a Lifetime
www.bklighting.com

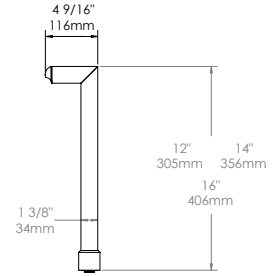
TYPE:

CAT. # LSW8-PL

LSW8-PL MERIDIAN



BR-BLP



The LSW8-PL is an ideal solution for uniform spacing and light levels in the absence of a structure. Its small aperture effectively shields against glare while allowing for excellent forward projection with even illumination side to side. Pair with our LSW8 step/wall light for design continuity throughout your project.

Features include:




- 1.25 Watts and up to 45 lumens
- Cree XP-L® High Density LED
- 2700, 3000 or 4000K (CRI 80 typ.)
- Interchangeable UV & Shock Resistant Silicone Optic
- Thermally Integrated®, Field Serviceable LED Module
- TRIAC Dimming to <10% typ.
- 12 VAC Electronic or Magnetic
- Copper and Brass Body w/ Brass or Copper Faceplate

Powered by **CREE** LEDs

12V

COPPER CORE TECHNOLOGY™

FACEPLATE OPTIONS

CU-NAT CU-BLP BR-NI

ORDERING GUIDE: LSW8-PL L (LED) SW (STEP/WALL) 8 (8 X 1/8 INCHES) PL (PATH LIGHT)

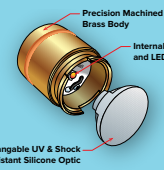
☐ INDICATES REQUIRED FIELD ☐ INDICATES OPTIONAL FIELD

FACEPLATE	OPTIC	LED COLOR	HEIGHT	MOUNT	FINISH
[BR] Brass	[N] 15° Narrow	[27D] 2700K	[12] 12"	[1/2] 1/2" Male Thread	[NAT] Natural
[CU] Copper	[M] 25° Medium	[30D] 3000K	[14] 14"	[G/S] Ground Stake	[BLP] Bronze Living Patina
	[W] 40° Wide	[40D] 4000K	[16] 16"	[TR-X] Trident Spike (9" or 12")	[BLP-XD] BLP Extra Dark
	[WF] 60° Wide Flood	[AMBD] Amber (XP-E) (585-595 nm)	[XX] Specify	[P/B-S] Power Box w/ Stake (Inc. 60W 120-12V transformer)	[NI] Nickel PVD
	[A] All Optics	[D] = Dimmable		[P/M] 4" Pedestal Mount	
				[SM3] 3 1/4" Surface Mount	
				[SM2] 2 1/4" Surface Mount	


[X] = Specify Length
NOTE: See Mount Guide for more options

Highly Configurable Machined Brass LED Module


IP67 sealed module with encapsulated electronics, Copper PCB and interchangeable silicone optics.



Precision Machined Brass Body
Internal Driver and LED
Interchangeable UV & Shock Resistant Silicone Optic




G/S TR P/B-S P/M SM3 SM2



CARLSBAD, CA | PHONE 877 942 1179 | FAX 760 931 2916 | E-MAIL SALES@AUORALIGHT.COM | AUORALIGHT.COM

In a continuing product improvement program, Auroralight reserves the right to modify product specifications without notification. © 2018 Auroralight, Inc. 9-12-REV-7.5



Alternate options for Path Light installed behind granite garden post

