



THE LANGHAM HOTEL

Dyer Brown Architects
dyerbrown.com

T 617 426 1680
F 617 426 2187

One Winthrop Square
Boston, MA 02110-1209

976 Brady Avenue, NW #100
Atlanta, GA 30318



BOSTON LANDMARKS COMMISSION

February 06 2020

PREPARED BY

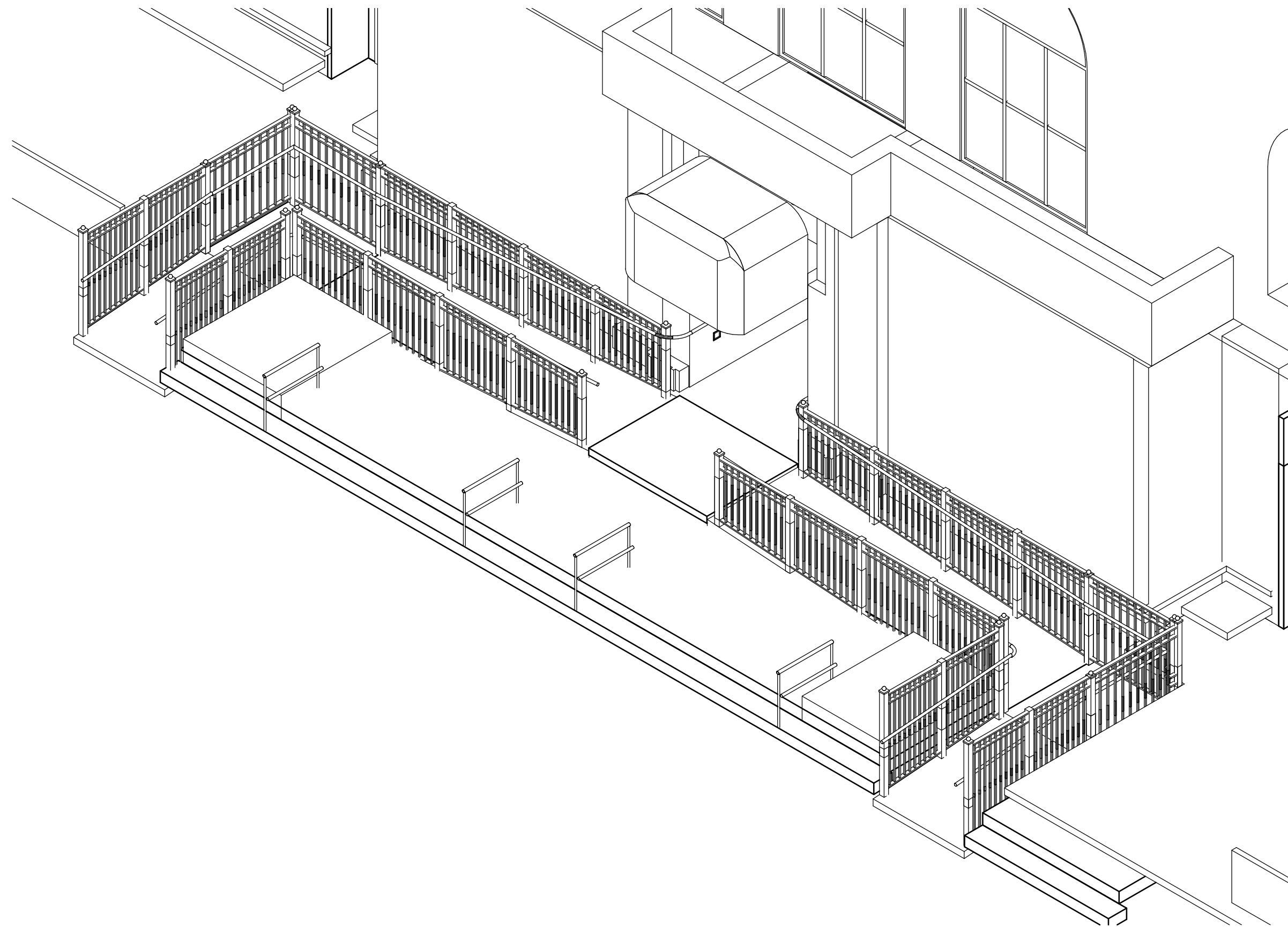
Dyer Brown Architects
One Winthrop Square
Boston, MA 02110



EXISTING PEARL STREET ENTRANCE



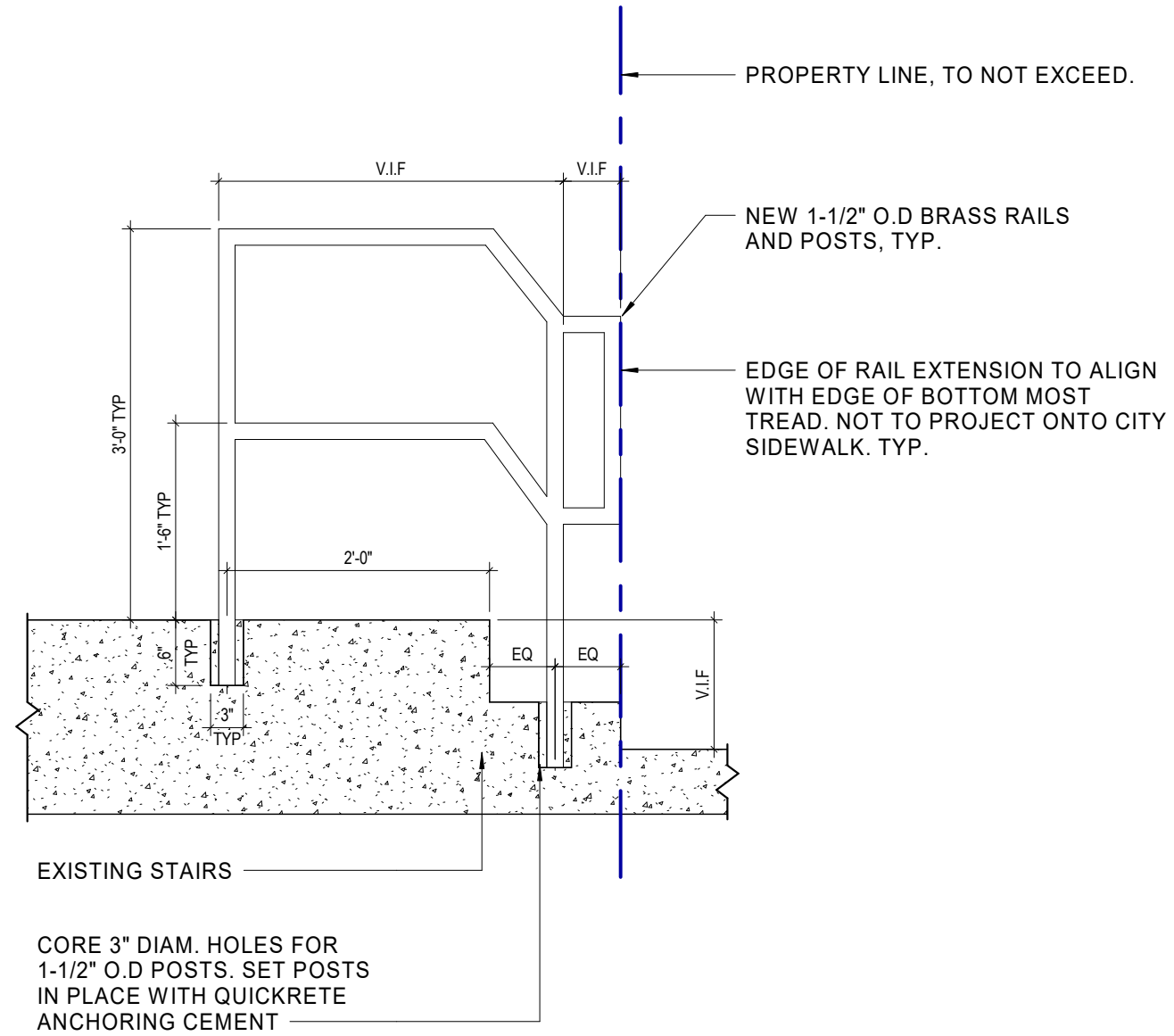
EXISTING PEARL STREET ENTRANCE



① PEARL STREET STAIR RAILS

DATE 04/06/20	CLIENT THE LANGHAM BOSTON	PROJECT THE LANGHAM RENOVATION	DYER BROWN DYER BROWN ARCHITECTS	One Winthrop Square, MA 02110-1209 DYERBROWN.CO M	T 617 426 1680 F 617 426 2187
NO. SK-	TITLE PEARL STREET STAIR RAILS				

4/3/2020 9:38:32 AM C:\Revit\2017 Local Files\MA_BOSTON_LANHAM_DOCUMENTATION\MODEL_CENTRAL_R17_SGIBREE.rvt

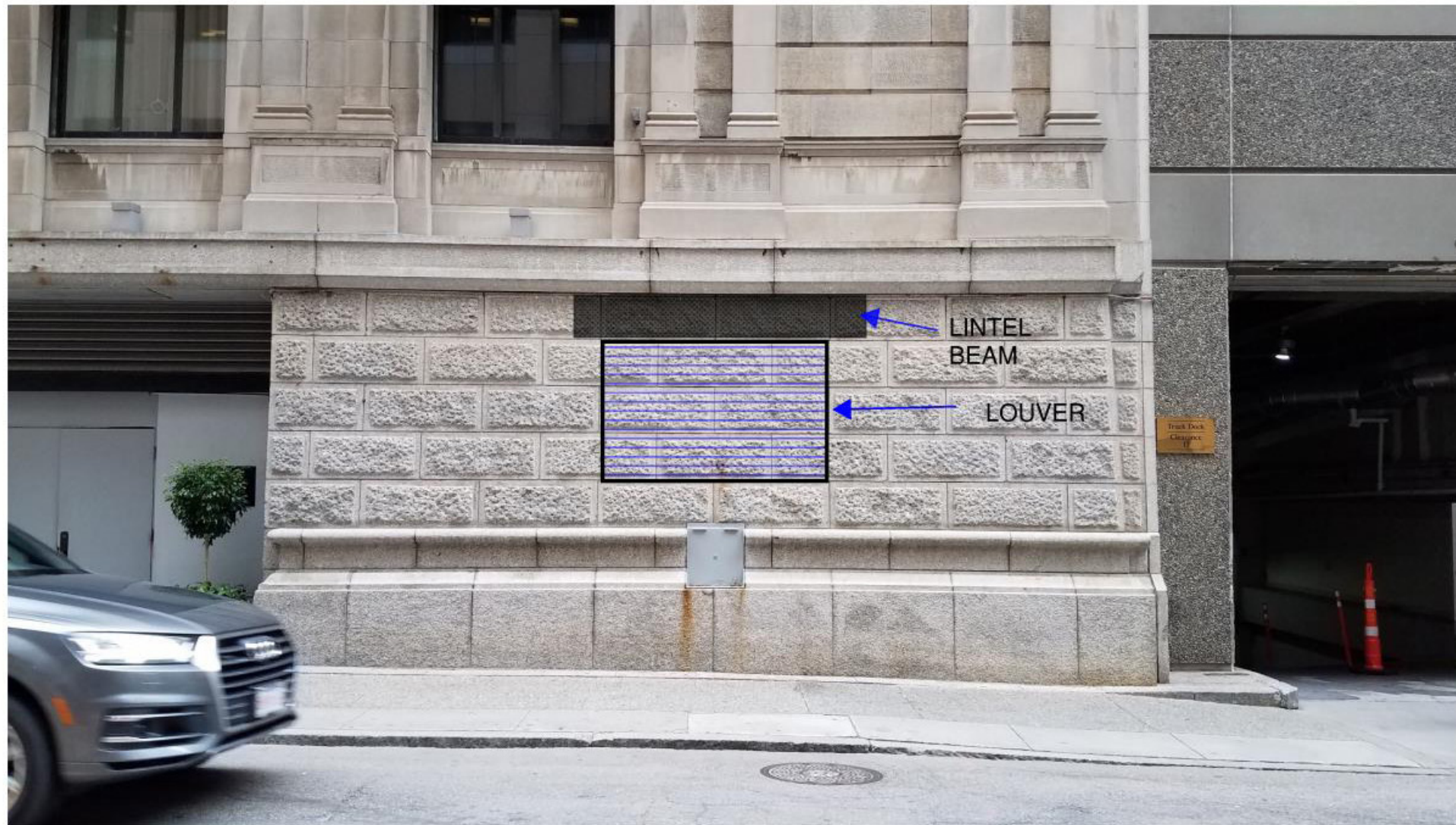


① STAIR RAIL CONSTRUCTION SECTION
1" = 1'-0"

DATE 04/03/20	CLIENT THE LANGHAM BOSTON	PROJECT THE LANGHAM RENOVATION	One Winthrop Square T 617 426 1680 Boston, MA 02110-1209 F 617 426 2187
NO. SKA-65	TITLE RFI 743 - PEARL STREET STAIR RAILS		



EXISTING OLIVER STREET FACADE



PROPOSED LOUVER
4'-6" high x 7'-0" wide
31.5SF using Ruskin
Louver with 62% free area

ELF6350DMP DRAINABLE STATIONARY LOUVER EXTRUDED ALUMINUM

STANDARD CONSTRUCTION

FRAME

6" (152) deep, 6063T6 extruded aluminum with .125" (3.2) nominal wall thickness. Downspouts and caulking surfaces provided.

BLADES

6063T6 extruded aluminum with .090" (2.3) nominal wall thickness. Drainable blades are positioned at 35° angle and spaced approximately 4" (102) center to center.

SCREEN

5/8" x .040" (16 x 1) expanded, flattened aluminum bird screen in removable frame. Screen adds approximately 1/2" (13) to louver depth.

FINISH

Mill.

MINIMUM SIZE

12"w x 12"h (305 x 305).

APPROXIMATE SHIPPING WEIGHT

6 lbs. per sq. ft. (29.3 kg per m²).

MAXIMUM FACTORY ASSEMBLY SIZE

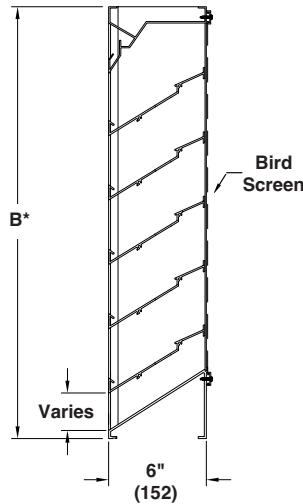
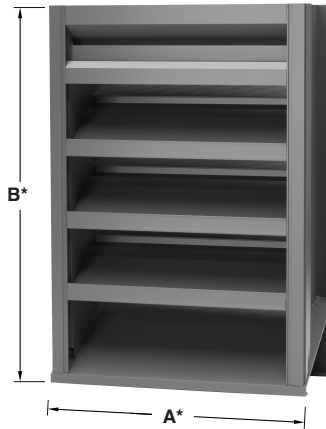
Single sections shall not exceed 120"w x 90"h (3048 x 2286) or 90"w x 120"h (2286 x 3048).

Louvers larger than the maximum factory assembly size will require field assembly of smaller sections.

SUPPORTS

Louvers may be provided with rear mounted blade supports that increase overall louver depth depending on louver size, assembly configuration or windload.

Consult Ruskin for additional information.



FEATURES

- 62% Free Area.
- Beginning point of water penetration above 1,250 fpm free area velocity.
- Published performance ratings based on testing in accordance with AMCA Publication 511.
- High performance frame system with drainable head collects and removes water to provide excellent water penetration performance.
- Drain gutter in each blade minimizes water cascade between blades.
- Continuous blades up to 120" (3048).
- All aluminum construction for low maintenance and high resistance to corrosion.

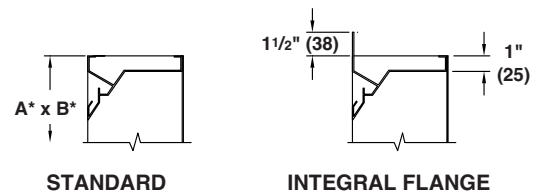
VARIATIONS

Variations to the basic design of this louver are available at additional cost. They include:

- Extended sill
- Hinged frame
- Front or rear security bars
- Filter racks
- Triangular and round options
- Integral flange
- A variety of bird and insect screens
- Selection of finishes: prime coat, 50% PVDF (modified fluoropolymer), epoxy, Pearledize 50 & 70, 70% PVDF, clear and color anodize. (Some variation in anodize color consistency is possible).

Consult Ruskin for other special requirements.

FRAME CONSTRUCTION



NOTES:

1. Dimensions in inches, parenthesis () indicate millimeters.
2. Units furnished 1/4" (6) smaller than given opening dimensions.