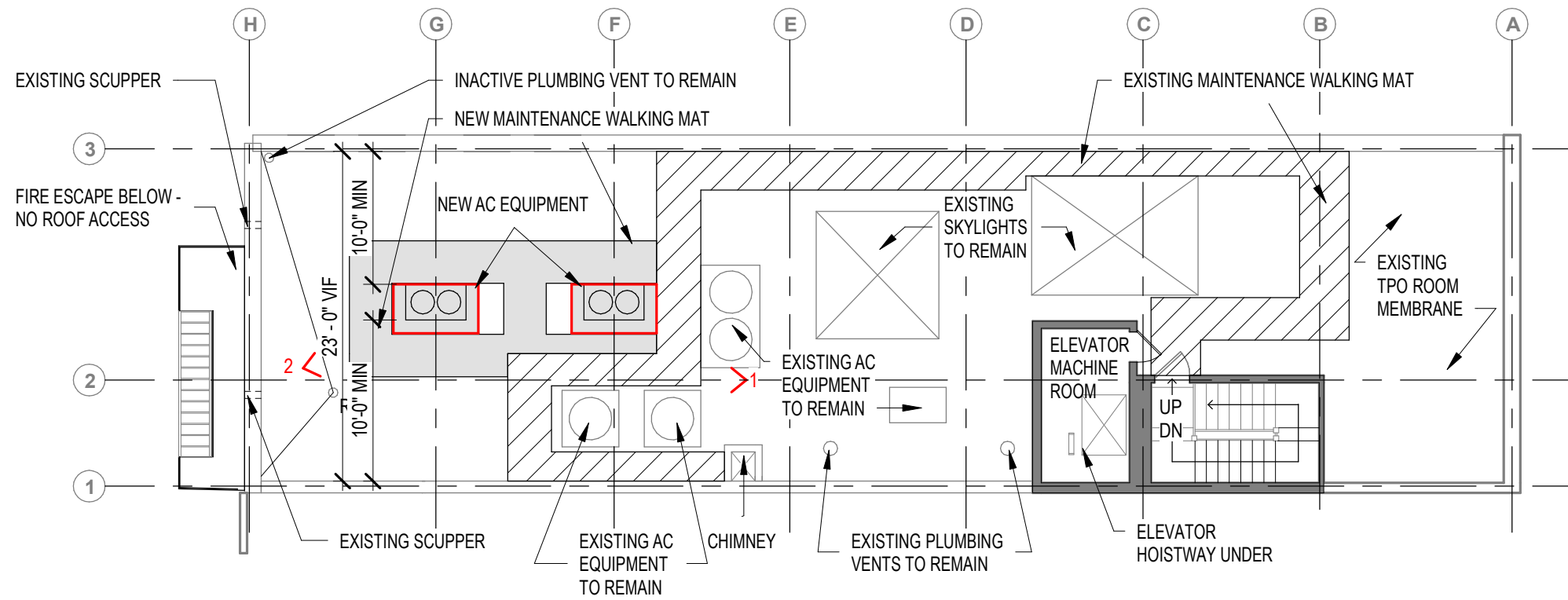
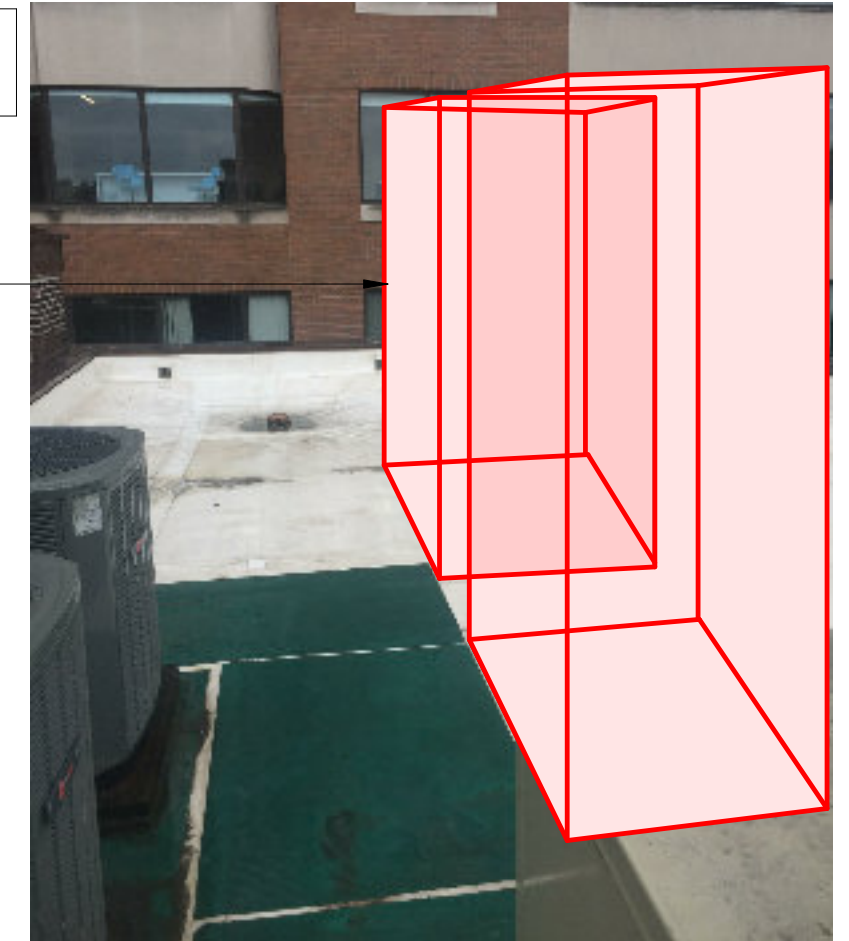


PROPOSED LOCATION AC ROOF UNITS



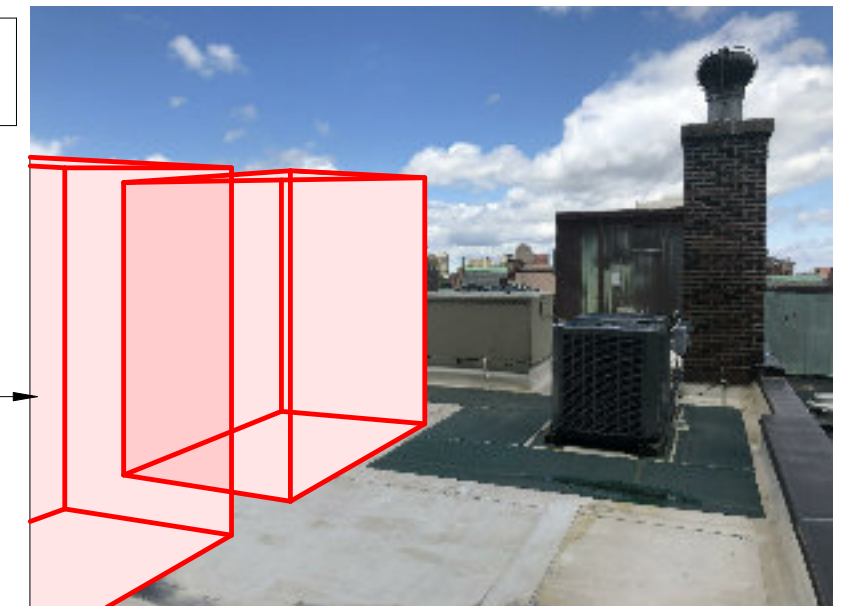
1

EQUIPMENT PROFILES
51"W X 66 3/4"H X 30 1/8"D



2

EQUIPMENT PROFILES
51"W X 66 3/4"H X 30 1/8"D



Bergmeyer

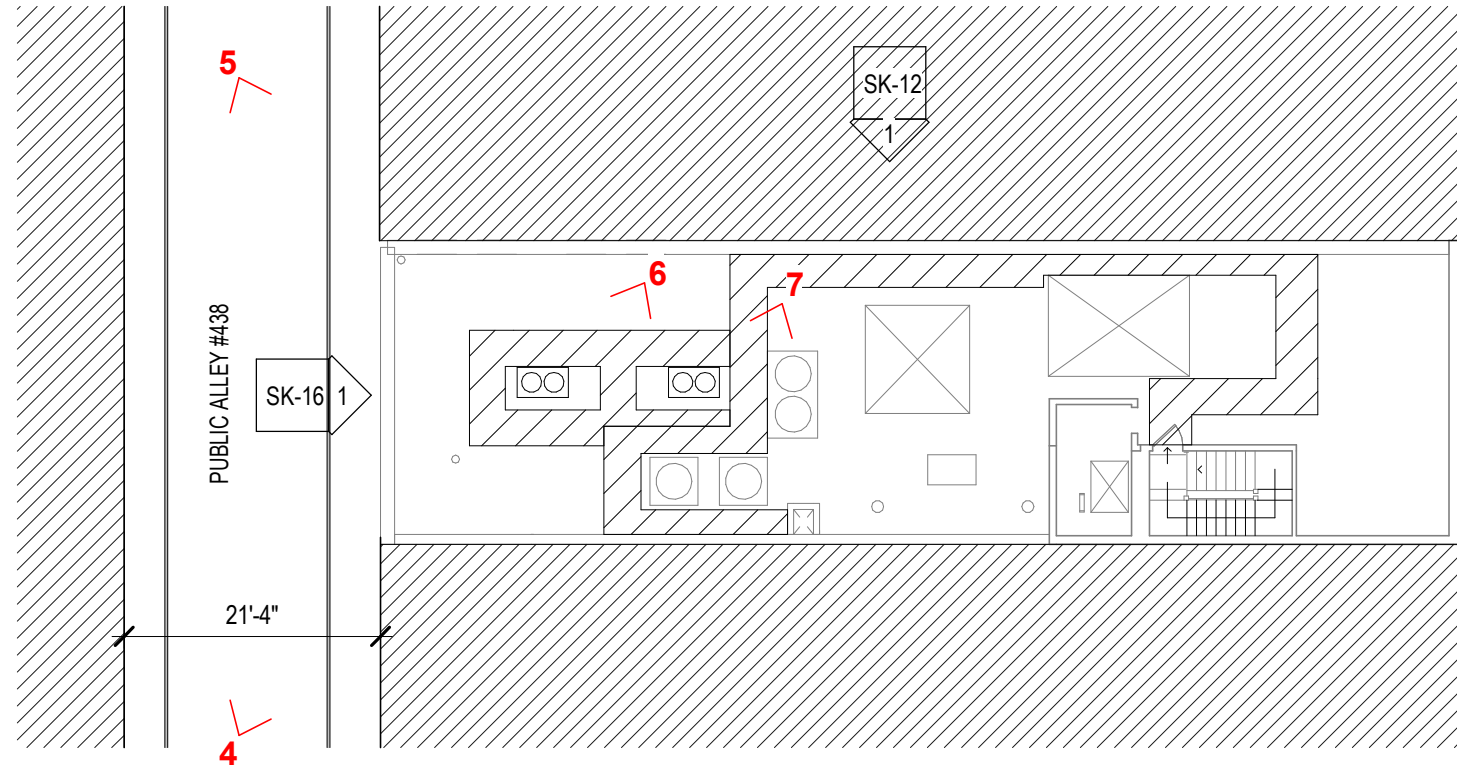
Bergmeyer Associates, Inc.
51 Sleeper Street
Boston, MA 02210
Phone 617 542 1025
Fax 617 542 1026

PROPOSED ROOF PLAN

CONCEPTS
18 NEWBURY STREET
BOSTON, MA 02116

JOB #:	19065.00
SCALE:	3/32" = 1'-0"
DATE:	01/06/20
DWN BY:	Author
CROSS REF:	

SK-10



1

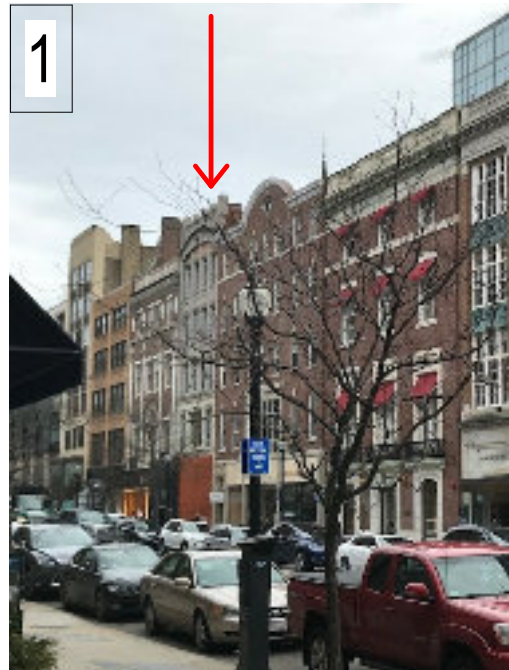
NEWBURY STREET

2

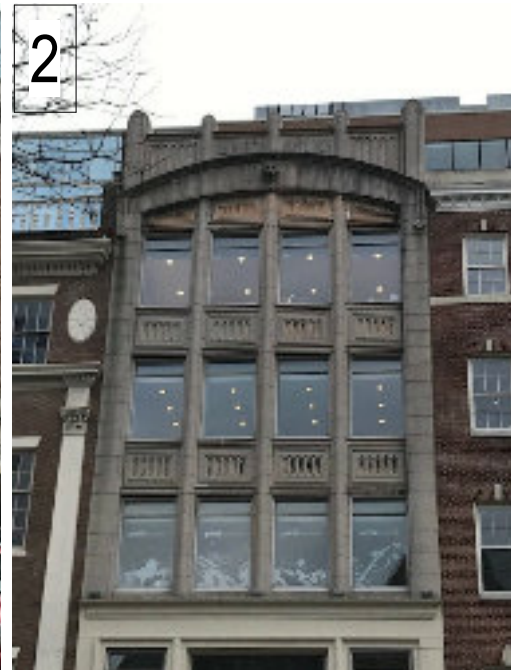
3



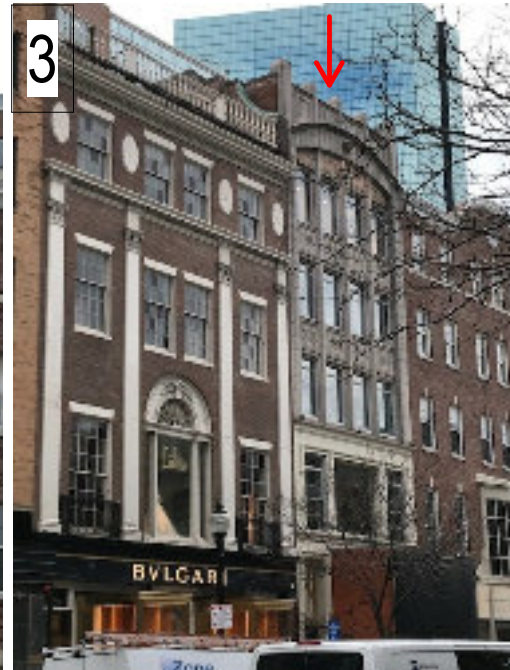
7



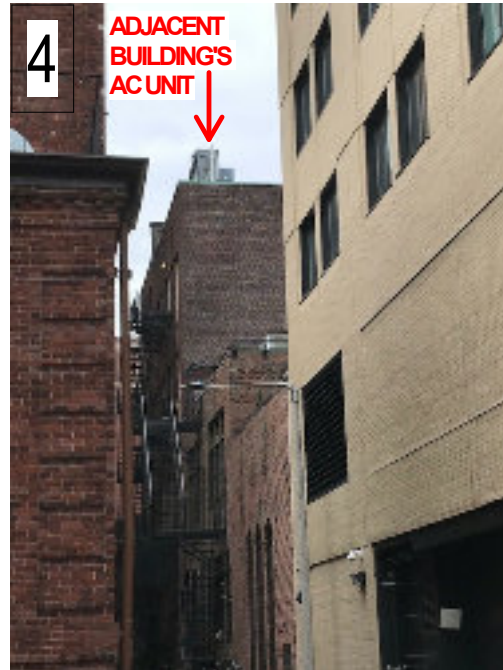
1



2

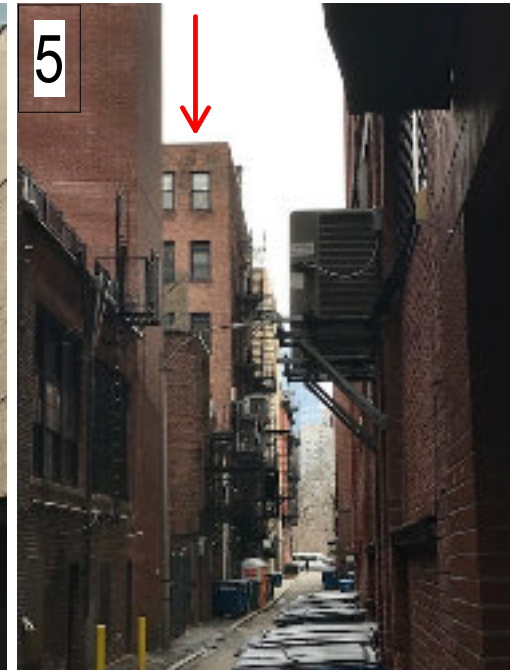


3

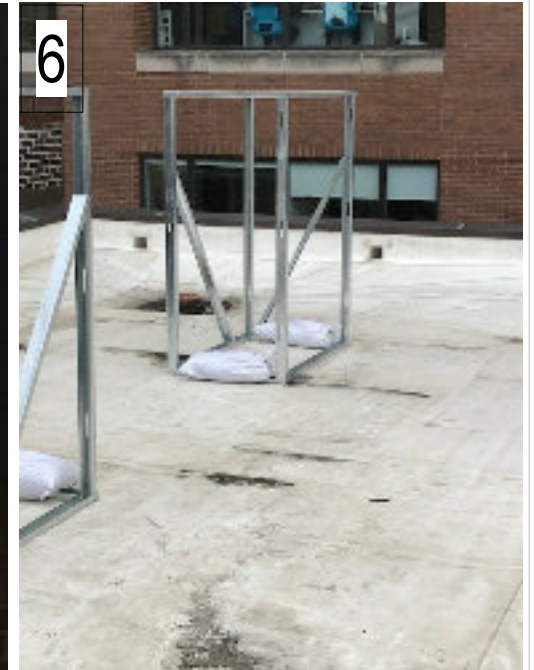


4

ADJACENT BUILDING'S AC UNIT



5



6

Bergmeyer

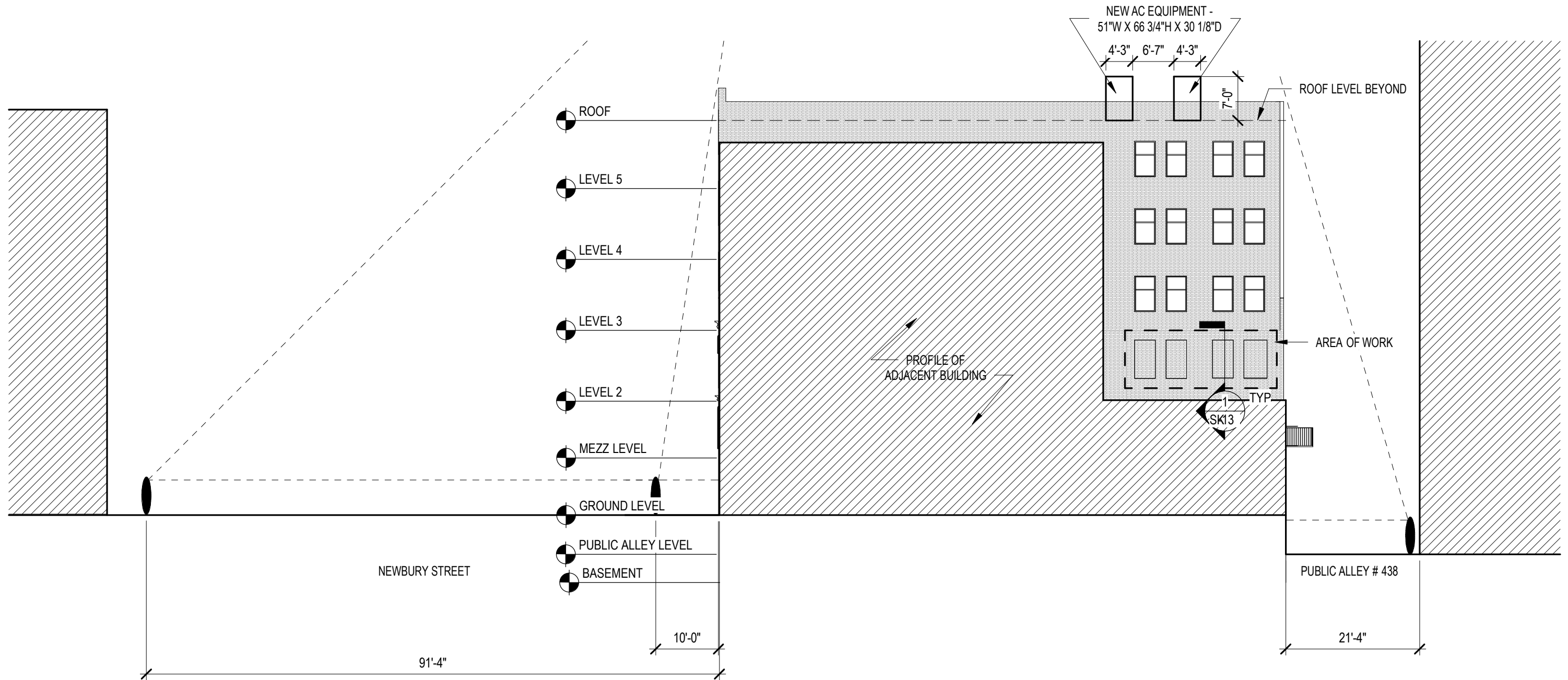
Bergmeyer Associates, Inc.
51 Sleeper Street
Boston, MA 02210
Phone 617 542 1025
Fax 617 542 1026

STREET VIEWS WITH MOCKUP

CONCEPTS
18 NEWBURY STREET
BOSTON, MA 02116

JOB #:	19065.00
SCALE:	1/16" = 1'-0"
DATE:	01/06/20
DWN BY:	Author
CROSS REF:	

SK-18



Bergmeyer

Bergmeyer Associates, Inc.
 51 Sleeper Street
 Boston, MA 02210
 Phone 617 542 1025
 Fax 617 542 1026

ELEVATION WITH SIGHT LINE

CONCEPTS
 18 NEWBURY STREET
 BOSTON, MA 02116

JOB #:	19065.00
SCALE:	1/16" = 1'-0"
DATE:	01/06/20
DWN BY:	Author
CROSS REF:	

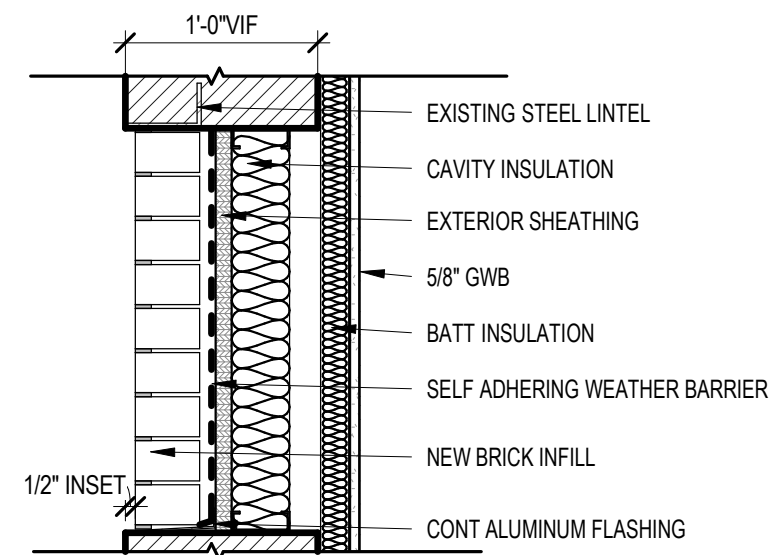
SK-12

INFILL LOT LINE WINDOWS



EXISTING D.H ALUMINUM WINDOWS N.I.C.

REMOVE FAN AND REMOVE (4) WINDOWS. INFILL OPENING WITH BRICK TO MATCH EXISTING



1 BRICK WINDOW INFILL DETAIL
1" = 1'-0"



LOT LINE WINDOW VIEW FROM INSIDE



Bergmeyer

Bergmeyer Associates, Inc.
51 Sleeper Street
Boston, MA 02210
Phone 617 542 1025
Fax 617 542 1026

INFILL LOT LINE WINDOWS

CONCEPTS
18 NEWBURY STREET
BOSTON, MA 02116

JOB #:	19065.00
SCALE:	1" = 1'-0"
DATE:	01/06/20
DWN BY:	Author
CROSS REF:	

SK-13



EXISTING STREET LEVEL

REMOVE EXPOSED EMERGENCY LIGHT AND CONDUIT AND PROVIDE NEW WITH CONCEALED CONDUIT.

BLACK PAINTED FIRE STAIRCASE

REMOVE WOOD D.H WINDOWS

RED BRICK

HVAC PIPING WILL BE REMOVED

REFASTEN AND MAKE SAFE UTILITY CABLES.

BLACK STEEL DOOR

CONCRETE WALL

STEEL BARS & HVAC LOUVERS

Bergmeyer

REAR FACADE

Bergmeyer Associates, Inc.
51 Sleeper Street
Boston, MA 02210
Phone 617 542 1025
Fax 617 542 1026

CONCEPTS

18 NEWBURY STREET
BOSTON, MA 02116

JOB #:	19065.00
SCALE:	
DATE:	01/06/20
DWN BY:	Author
CROSS REF:	

SK-14

EXISTING STREET LEVEL



EXISTING D.H ALUMINUM WINDOWS N.I.C.

A/C EQUIPMENT AND SUPPORTS TO BE REMOVED

LIMIT OF SCOPE OF WORK

STEEL CASEMENT WINDOWS

Bergmeyer

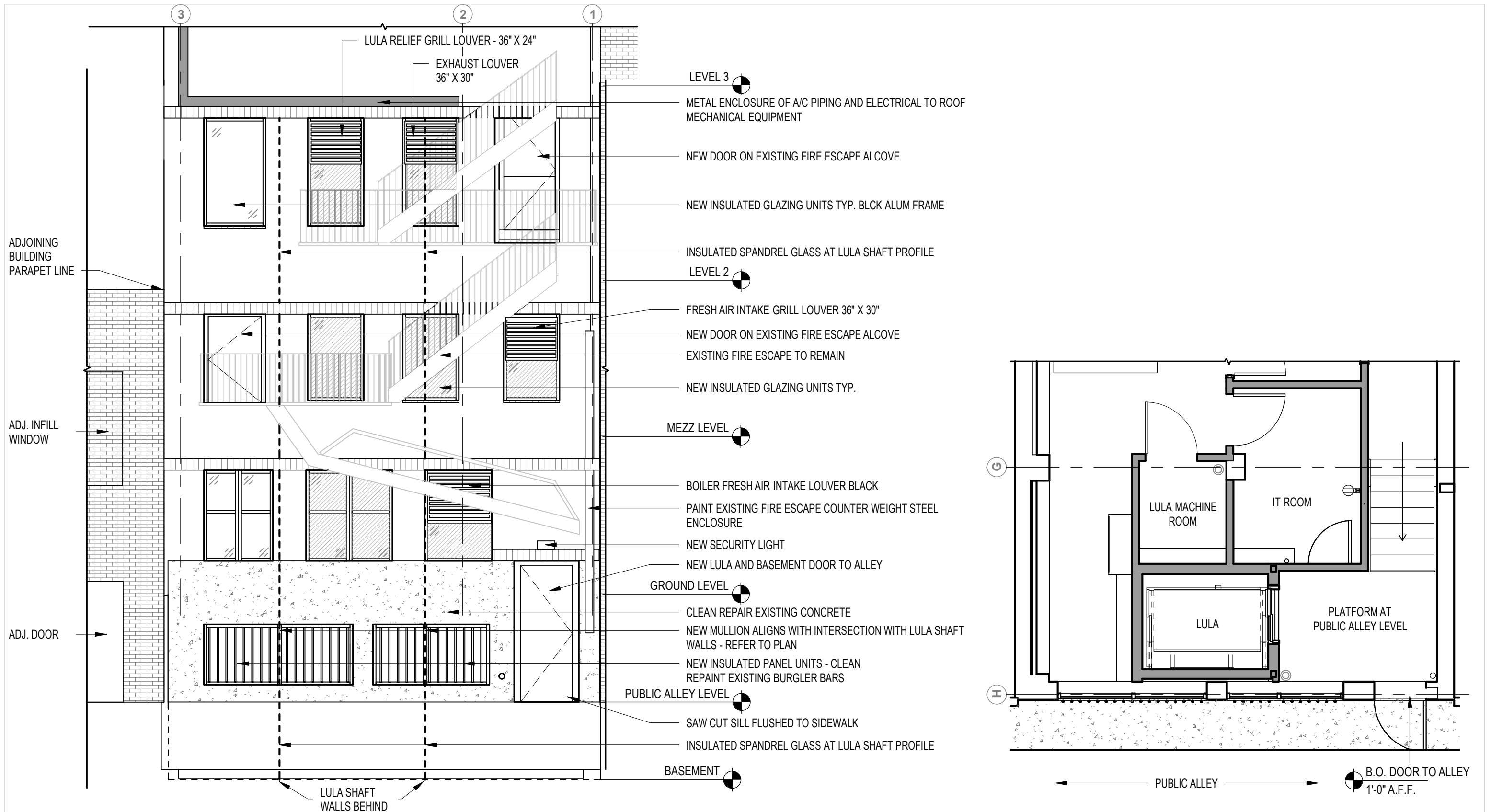
Bergmeyer Associates, Inc.
51 Sleeper Street
Boston, MA 02210
Phone 617 542 1025
Fax 617 542 1026

REAR FACADE

CONCEPTS
18 NEWBURY STREET
BOSTON, MA 02116

JOB #:	19065.00
SCALE:	
DATE:	01/06/20
DWN BY:	Author
CROSS REF:	

SK-15



Bergmeyer

Bergmeyer Associates, Inc.
 51 Sleeper Street
 Boston, MA 02210
 Phone 617 542 1025
 Fax 617 542 1026

PROPOSED REAR FACADE - PUBLIC ALLEY # 438

CONCEPTS
 18 NEWBURY STREET
 BOSTON, MA 02116

JOB #: 19065.00
 SCALE: 3/16" = 1'-0"
 DATE: 01/06/20
 DWN BY: Author
 CROSS REF:

SK-16