

Temporary Operations Site At the Former Lee Pool Area



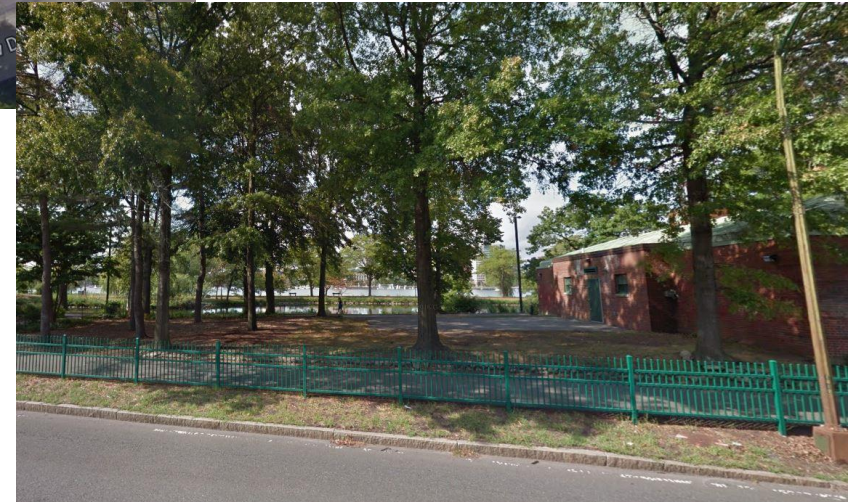
Boston Landmarks Commission
December 10, 2019

Project Background

- The Department of Conservation and Recreation (DCR) and EA shared operations space at the Lee Pool Complex until December 2018
- While the Lee Pool Complex was demolished, DCR approved EA's move of our operations space to the Dartmouth Street Comfort Station
- Now that the Lee Pool Complex demolition is complete, DCR and EA propose to move EA's in-park operations space back to that area

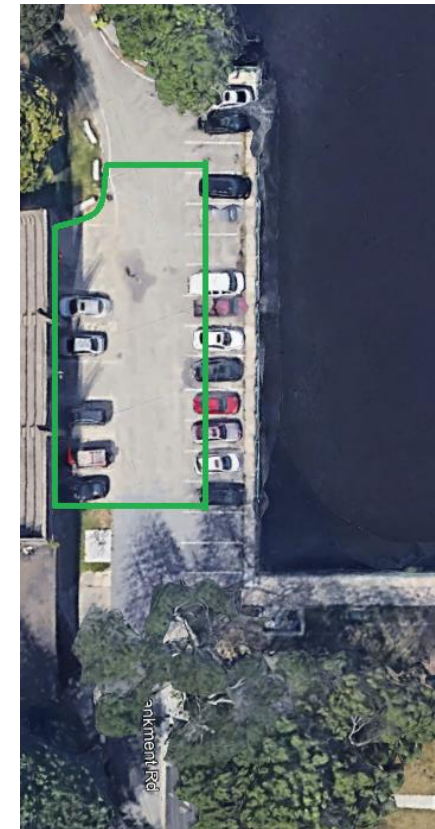
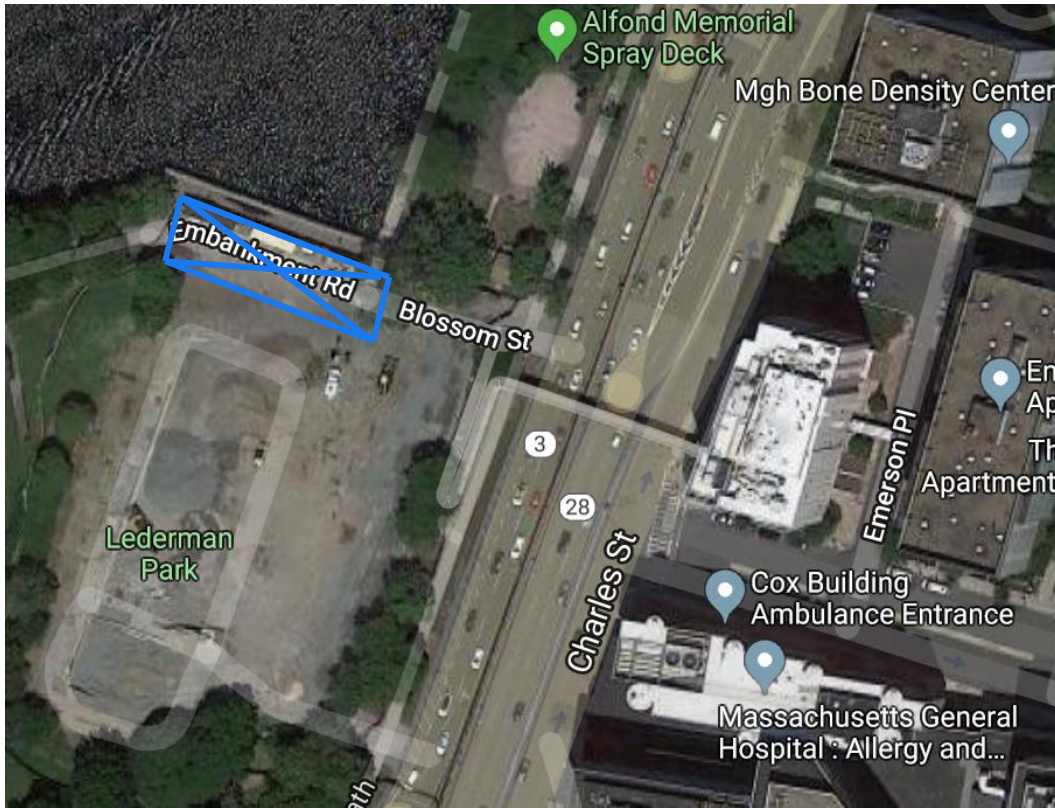
Project Background:

Current Location at Dartmouth Street



Project Background:

Proposed Location at Lee Pool Complex



Project Objectives

1. Improve operations site access
2. Relocate to an area with longstanding operational usage
3. Relocate to an area with more space for horticulture, programs, and projects materials and vehicles

Proposed Site: Current Conditions

Camera facing north-east
from Esplanade pathway,
towards Alfond Memorial
Spray Deck



Proposed Site: Current Conditions

Camera facing
north-east from
Esplanade pathway,
towards Alfond
Memorial Spray
Deck



Proposed Site: Current Conditions

Camera facing
east from
Esplanade
pathway, towards
Storrow Drive

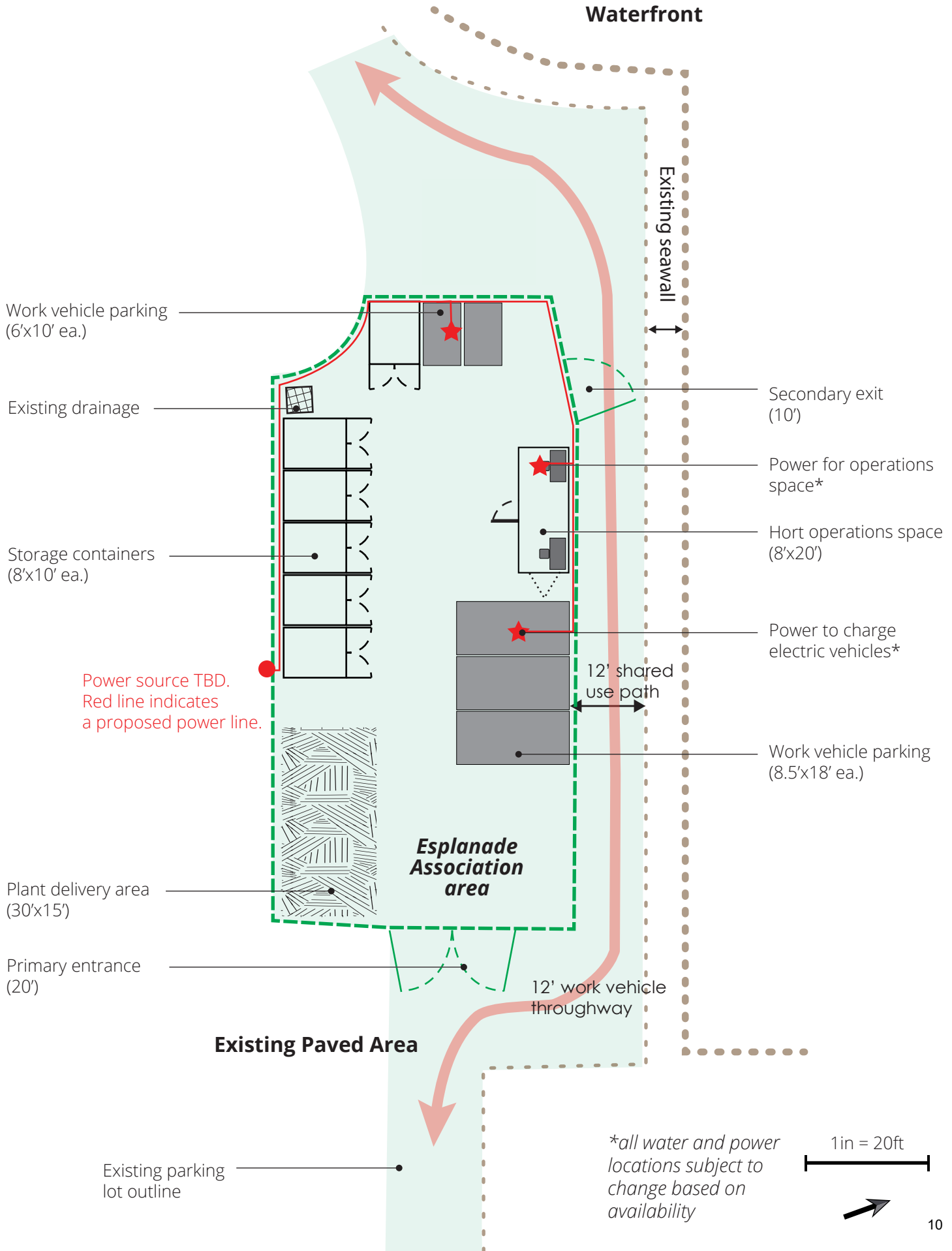


Proposed Site: Current Conditions

Camera facing west
from where the
Blossom St
footbridge meets
Storrow Drive,
towards the
Esplanade Pathway



ESPLANADE ASSOCIATION TEMPORARY OPERATIONS SPACE



Project Scope: Storage Containers



Standard 8'x10'
storage containers



Project Scope: Office Trailer



8'x20' Office Trailer
will provide space for
field operations

Project Scope: Fence and Scrim

8' Chain link fencing with locked gates and privacy scrim would secure the space and screen the area from park users and adjacent neighbors. Weights will be used to hold down the panels.



Note: The fence at Dartmouth operations site was only 6' tall – the fence at the Lee Pool Complex would be 8' tall to fully screen the containers.

Project Scope: Fence and Scrim

EA and DCR are working together to design a custom fence scrim that will inform and delight park visitors.

DESIGN SUBJECT
TO CHANGE,
PENDING DCR
APPROVAL

RUN

The Esplanade is the premier running trail in Greater Boston. Pictured is the annual Esplanade 5K in May, which supports the park!

Photo: Brent Doscher

[Esplanade.org/Esplanade5K](https://www.esplanade.org/Esplanade5K)
[@EsplanadeInBoston](https://www.instagram.com/EsplanadeInBoston) | [@EsplanadeBoston](https://www.twitter.com/EsplanadeBoston)

SEE ART

Public art on the Esplanade is both beautiful and practical. See one of four contemporary temporary murals on the Esplanade!

Photo: Sebastian Gonzalez Quintero
 Mural: Sophy Tuttle

[Esplanade.org/PublicArt](https://www.esplanade.org/PublicArt)
[@EsplanadeInBoston](https://www.instagram.com/EsplanadeInBoston) | [@EsplanadeBoston](https://www.twitter.com/EsplanadeBoston)

Esplanade ASSOCIATION™
 Making life better on the Esplanade

DESIGN SUBJECT
TO CHANGE,
PENDING DCR
APPROVAL

Thank You!