



Starbucks is a smoke-free environment.

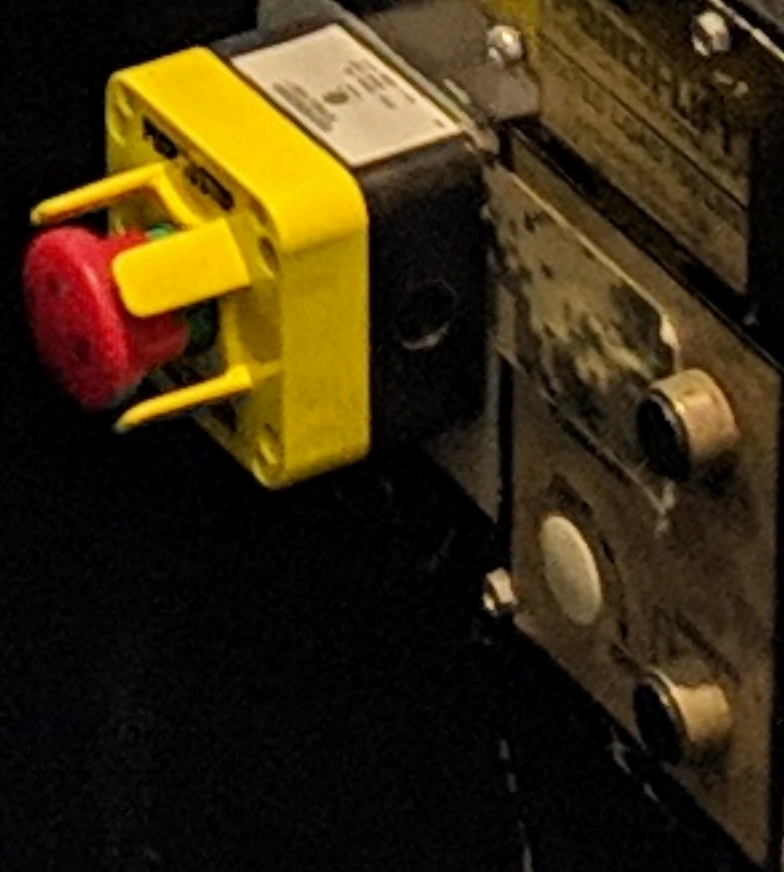


Smoking is prohibited on these premises, including the outdoor dining area or within 25 feet of it.



FOR OUR PROTECTION
Call a licensed fire alarm company to inspect, maintain and service your fire alarm system.
ADT
1-877-238-9630

WARNING
The Commissioner of Assessments
DEPARTMENT OF PUBLIC SAFETY
DIVISION OF INSPECTION
NOTICE
This alarm is not functioning and has caused a fire alarm to be activated. It has been inspected and found to be inoperable. The alarm system must be repaired and tested within 10 business days of the date of this notice. Failure to do so may result in the alarm system being disconnected from the fire alarm control panel. The alarm system must be repaired and tested within 10 business days of the date of this notice. Failure to do so may result in the alarm system being disconnected from the fire alarm control panel.
REPEAL
DANGER

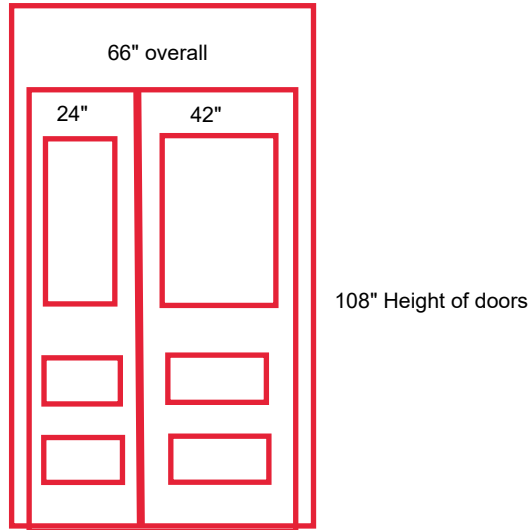




replace controler for lift with new. patch and repair



STARBUCKS DOOR REPLACEMENT 65-66 BEACON STREET



Replace double doors with one larger 42" door and 24" sidedoor to meet ADA code for the lift replacement. Detail and design to match

TO: KAMCO SUPPLY - SHREWSBURY

JOB: STARBUCKS

November 14, 2019

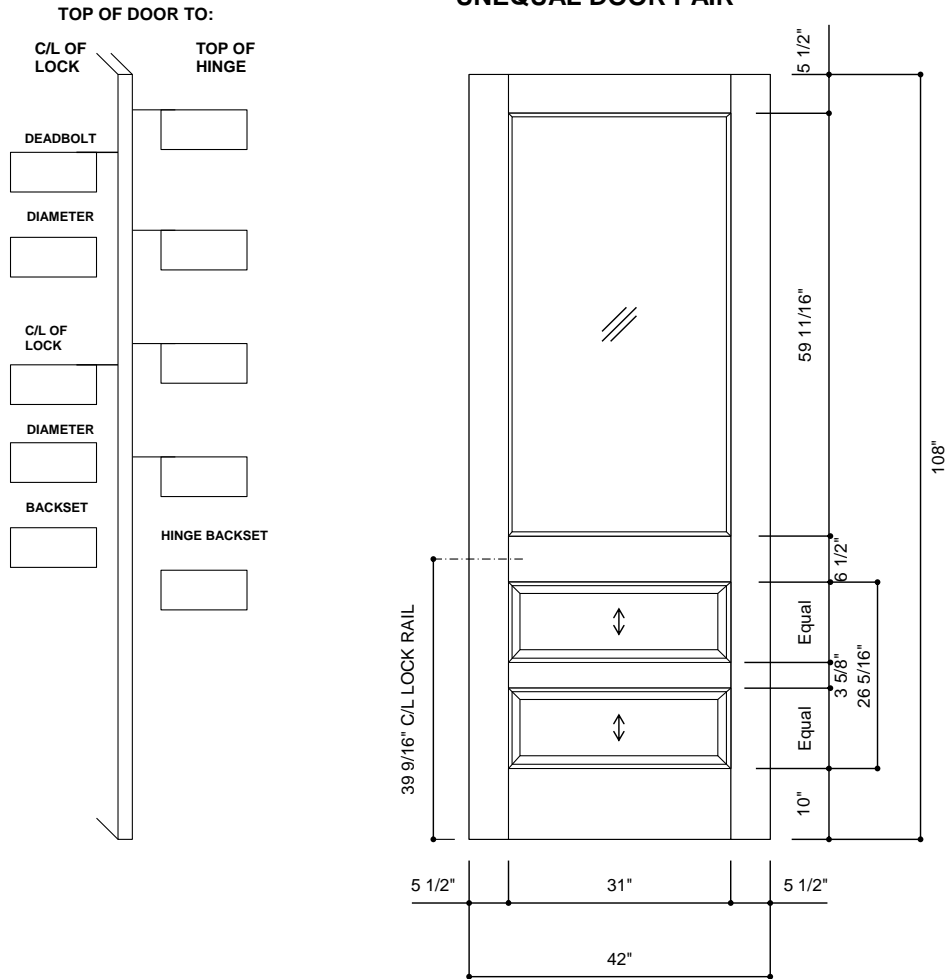
Drawing 1

QUOTE #: L111419-1605

CUST P.O. #: PENDING

ORDER # PENDING

A103L - 2 PANEL 1 LITE W / STANDARD RAISED MOULDING # 115- BOTH SIDES
EXTERIOR - CUSTOM GRADE
UNEQUAL DOOR PAIR



| | | |
|--------------|-------|------|
| (Bevel Info) | Hinge | Lock |
| | Yes | Yes |

QUANTITY
2(VARIOUS WIDTHS)

THICKNESS
1 3/4 "

STILES/RAILS

AFR. MAHOGANY, PLAIN SLICE, HARRING STANDARD CONSTRUCTION

PANEL

1 5/8 " THICK RAISED PANEL, AFR. MAHOGANY, PLAIN SLICE, RIM BANDED

GLASS

5/8" CLEAR TEMP INSUL- LOGO ON EACH LITE

PREFINISH

EXT TO MATCH SAMPLE

WARRANTY

N/A - FACTORY FINISH REQ

MACHINING SPECIFICATIONS

DESC. _____ MANUF. _____ TEMP# _____ PROD/FUNCT _____

SEE QUOTE

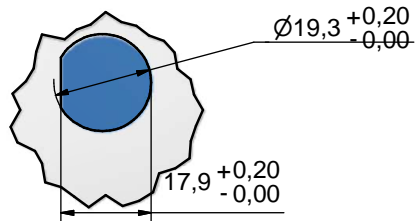
DOOR NUMBERS:

SWING

APPROVED BY: _____

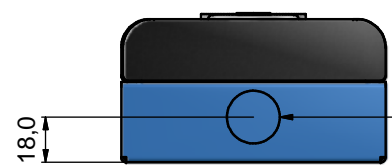
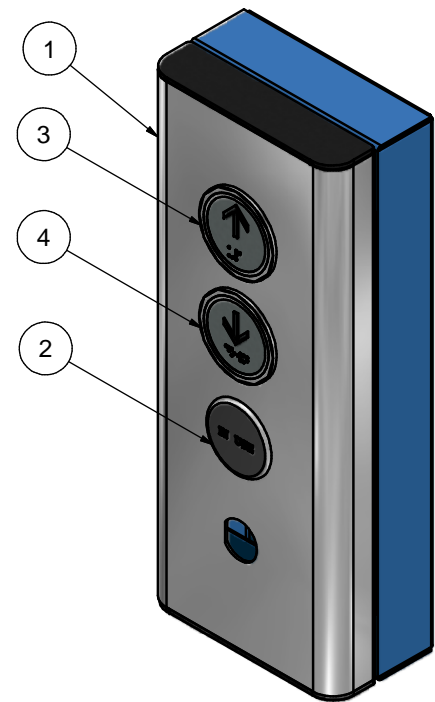
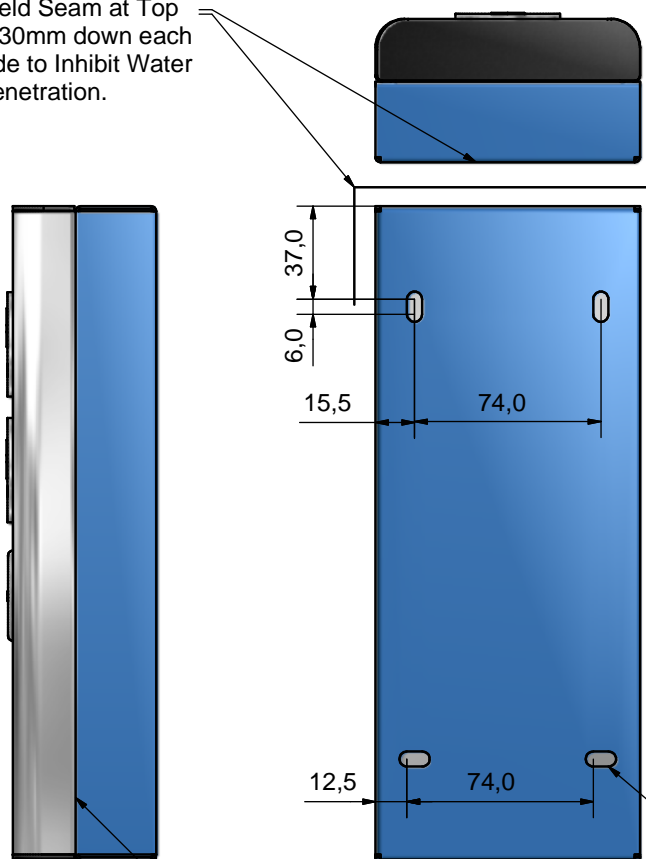
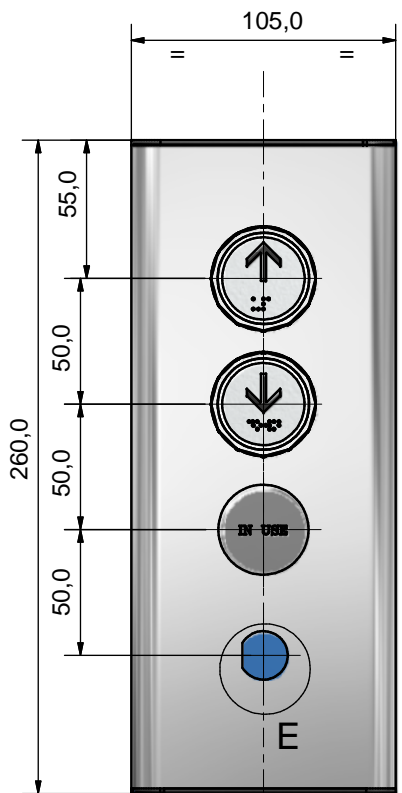
DATE: _____

E (1:1)



| BILL OF MATERIALS | | | | |
|-------------------|-----|-------------|--|---------------------------|
| ITE | QTY | PART NUMBER | DESCRIPTION | Comments |
| 1 | 1 | 37403 | Assy,Box, Call Station, Elevator Buttons | Vendor Design & Assembled |
| 2 | 1 | 21338 | Light,In Use (JHI) | |
| 3 | 1 | 21321 | Button, Up, (JHI) | |
| 4 | 1 | 21323 | Button, Down, (JHI) | |

Weld Seam at Top & 30mm down each side to Inhibit Water Penetration.



Gasket for Outside Use.
37407
(Garaventa Supply)

25,0 32,0
57,0

4x Ø6x12mm Slots

| | | | | | | | |
|------|---------------------------------------|-------------------------------|--------------|--------------------|-----------|--------|--------|
| REV. | SCALE: 1/2 | TOLERANCES: DIMENSIONAL ± 0.5 | ANGULAR 0.5° | UNITS: MILLIMETERS | DATE | DRN.BY | CHK.BY |
| C | Corrected item 4 from 21322 to 21323 | | | | 09/22/11 | DR | |
| B | Modify Drawing to Vendors Arrangement | | | | 08/04/10 | AJW | |
| A | Initial Release | | | | 2/29/2008 | AJW | |

SURREY, BC, CANADA
7505 - 134A STREET
V3W 7B3
PH: ++1 604 594 0422
FAX: ++1 604 594 9915
http://www.garaventalift.com

Assy Call Station (JHI)
Less Key Switch
Genesis III

PAGE 1 of 1

37404-CAY

SW 6258
Tricorn Black
semigloss