

# BOSTON NEWBURY ST

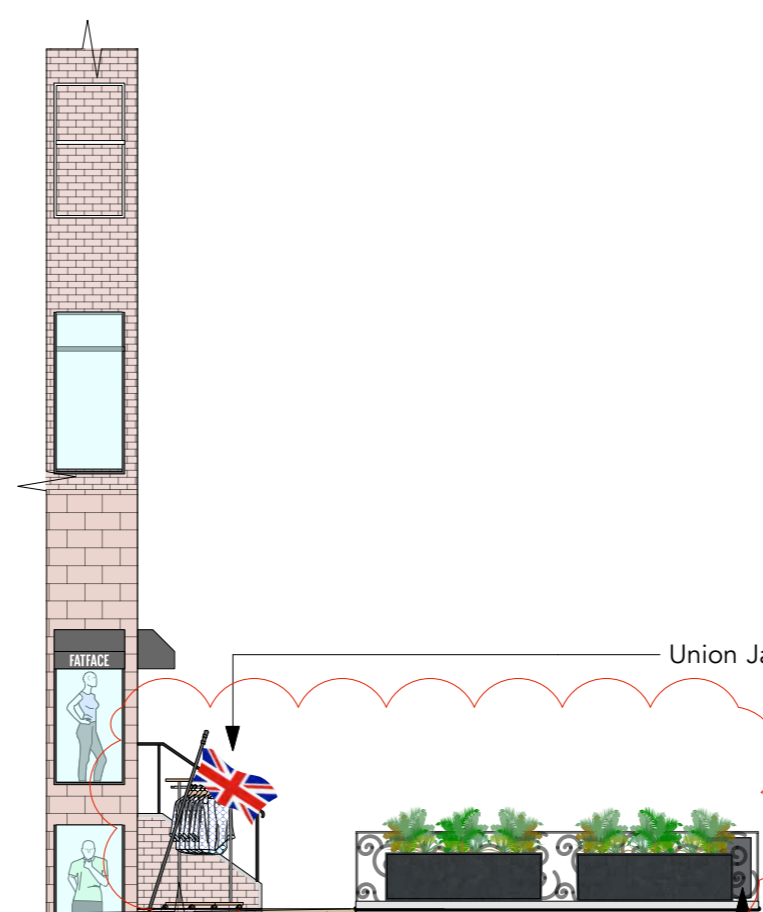
## PROPOSED EXTERNAL AREA



EXISTING RAILINGS & PLANTERS TO BE RETAINED



ELEVATION A-A



ELEVATION B-B

Existing planters to be retained.

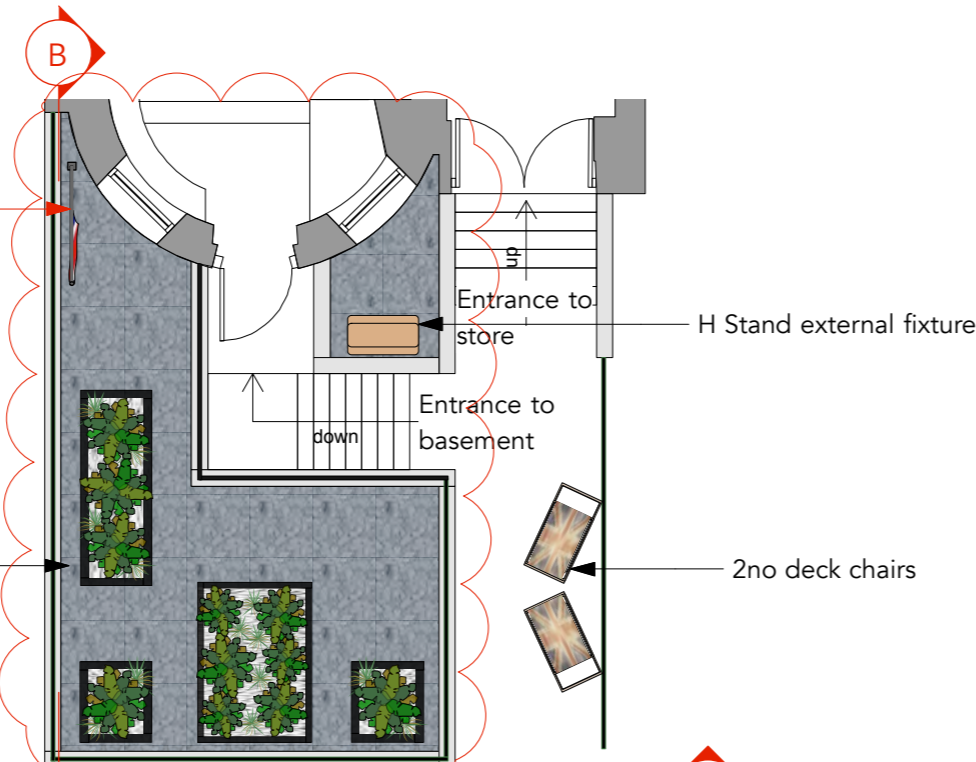
Union Jack Flag angled and fixed to the ground with a 10"L cast aluminium lawn socket for flags.  
Flag Size: 45" x 22"

Union Jack flag

'Pop up' sign to replace existing railing sign. See visual and Detail A.



2no DECK CHAIRS



PLAN

Union Jack Flag angled and fixed to the ground with a 10"L cast aluminium lawn socket for flags.

Existing railings to be retained, cleaned and made good.

Retain existing planters.

H Stand external fixture

2no deck chairs

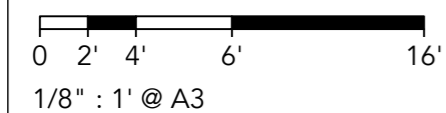


DETAIL A  
Rail Graphic (NTS)  
Printed onto foam board and fixed to railings.



10"L CAST ALUMINUM LAWN SOCKET FOR FLAG POLE  
Supplier: Gettysburg flag works USA

REV	DESCRIPTION	BY	DATE
D	Amended flag design and planters retained.	EP	19.11.19
C	Amended design to include deck chairs & H stand.	EP	21.10.19
B	Amended design to include Union Jack flag	EP	19.09.19
A	Updates in line with planner feedback.	EP	20.08.19



CHECKED BY	DRAWN BY	DRAWING NO	DRAWN DATE	REVISION DATE	REV
EP	JM	19.1846.01-3	27/06/2019	19/11/2019	D

# BOSTON NEWBURY ST

PROPOSED VISUAL  
EXTERNAL AREA



A	Amended flag design	EP	19.11.19
REV:	DESCRIPTION:	BY:	DATE:

CHECKED BY	DRAWN BY	DRAWING NO	DRAWN DATE	REVISION DATE	REV
EP	JM	19.1846. 01-4	23/09/2019	19/11/2019	A