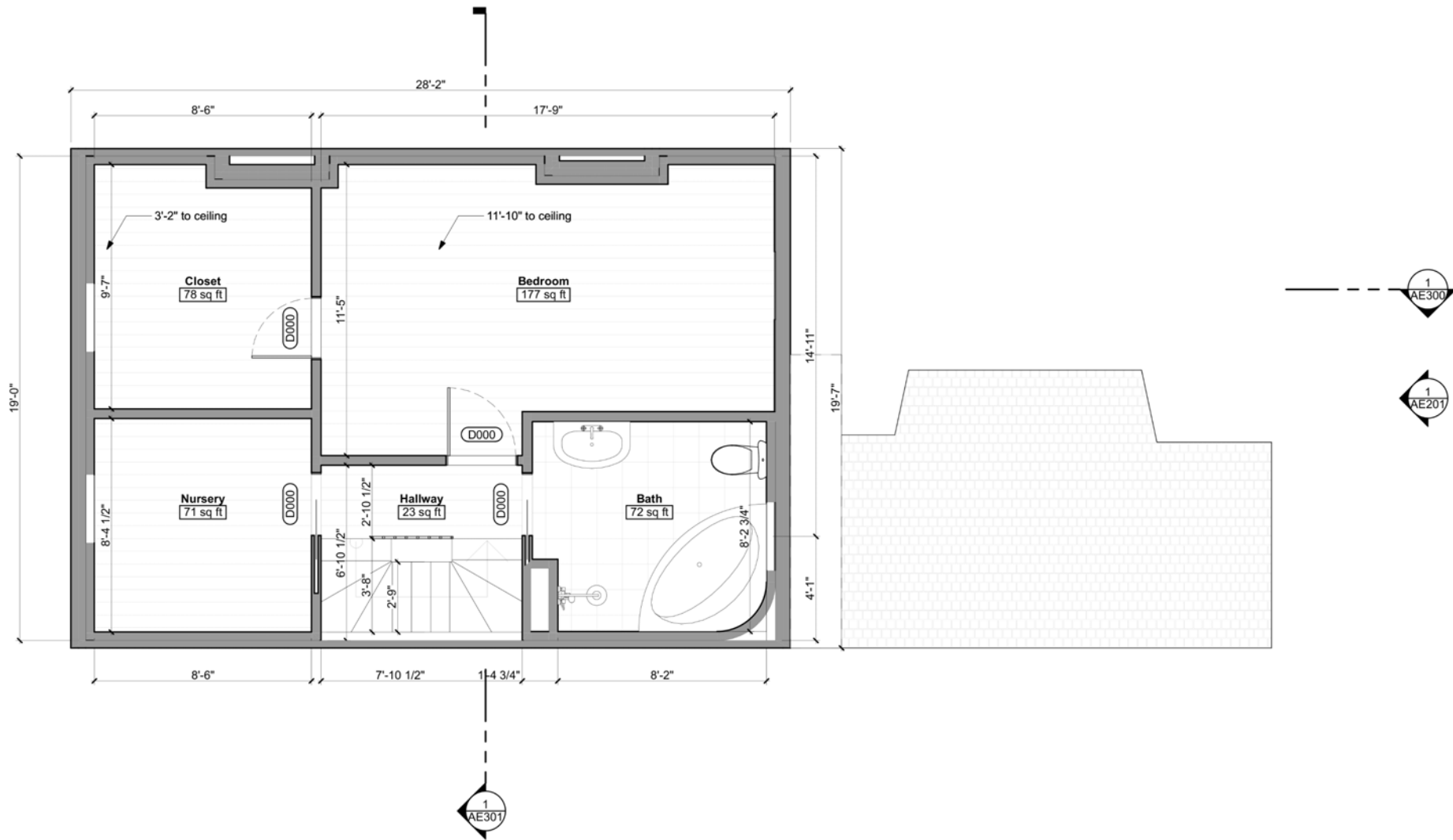


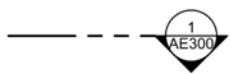
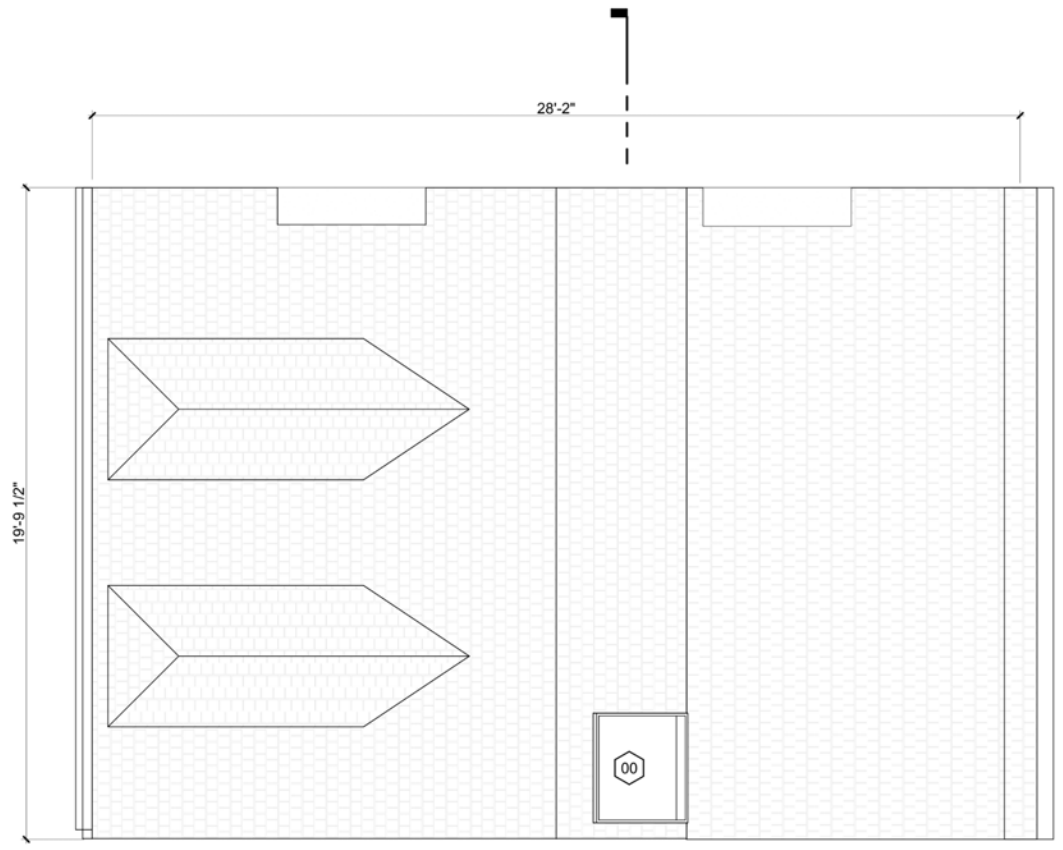
# 4 Ringgold Street New roof deck and windows

SELDC – October 1<sup>st</sup>, 2019





4<sup>th</sup> Floor Existing









+40'-8 1/2"  
Ridge Line

13'-0"

+27'-8 1/2"  
Level 4

8'-11 1/2"

+18'-9"  
Level 3

10'-6"

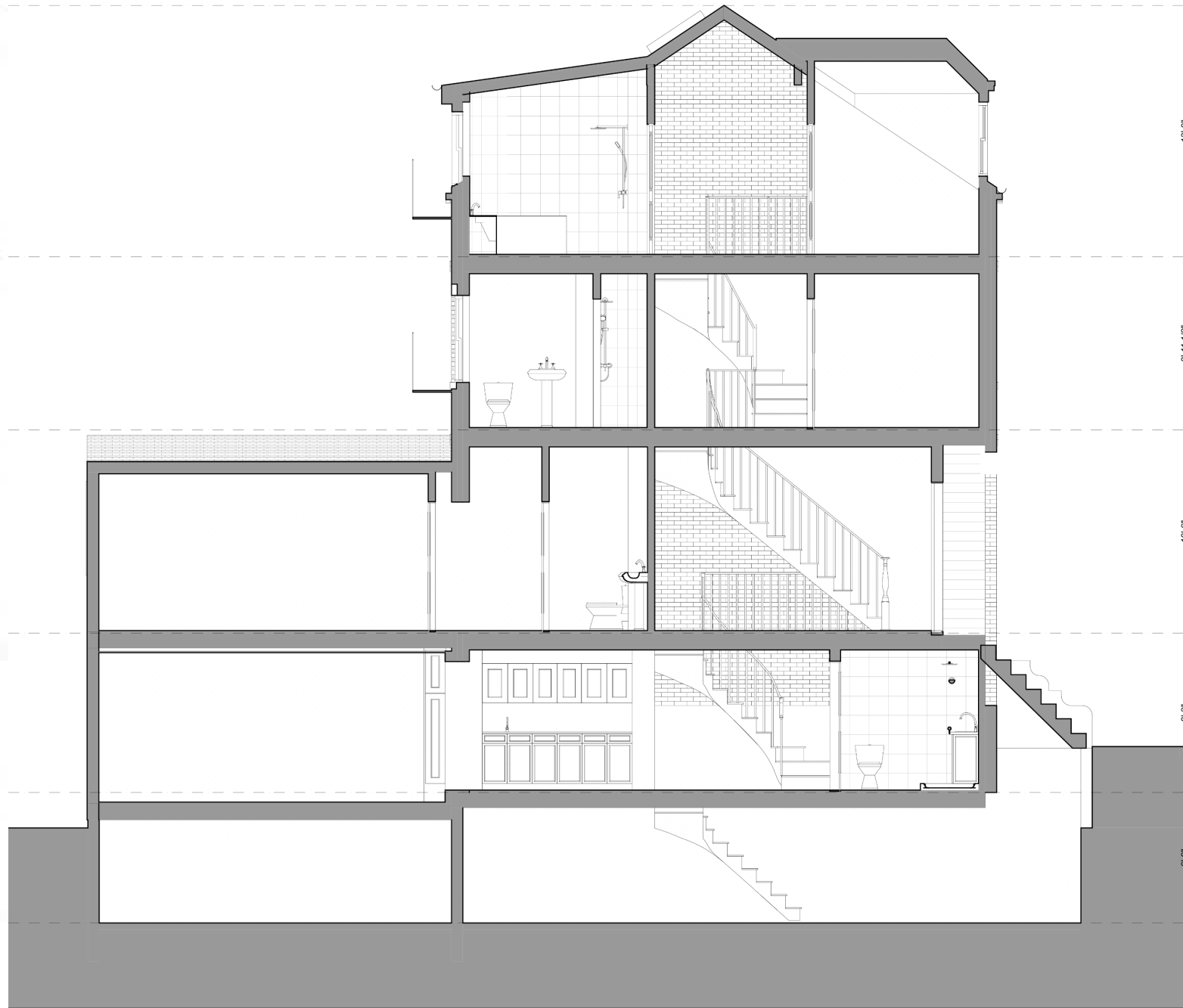
+8'-3"  
Level 2

8'-3"

+0"  
Level 1

6'-9"

-6'-9"  
Basement



+40'-8 1/2"  
Ridge Line

13'-0"

+27'-8 1/2"  
Level 4

8'-11 1/2"

+18'-9"  
Level 3

10'-6"

+8'-3"  
Level 2

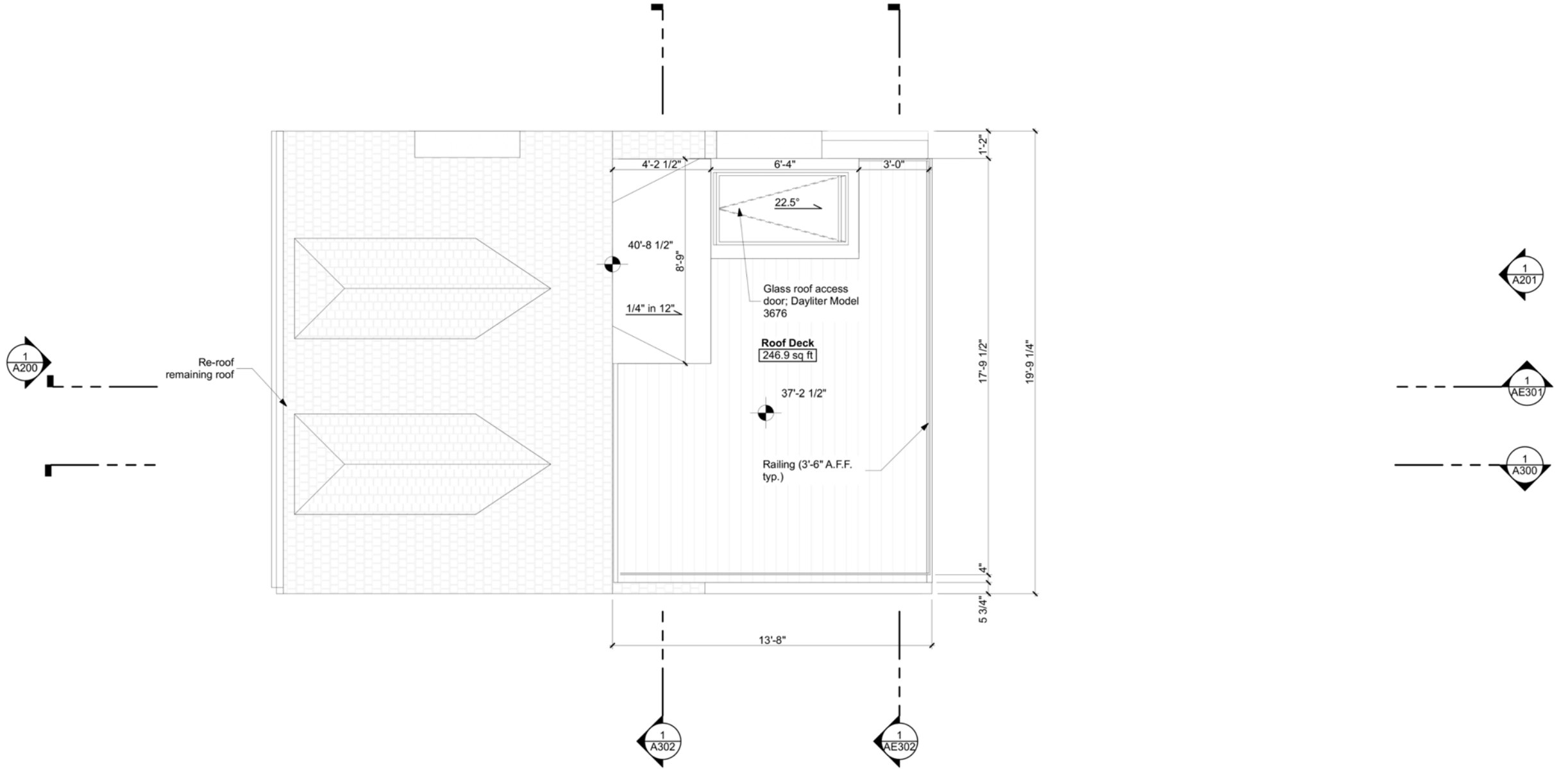
8'-3"

+0"  
Level 1

6'-9"

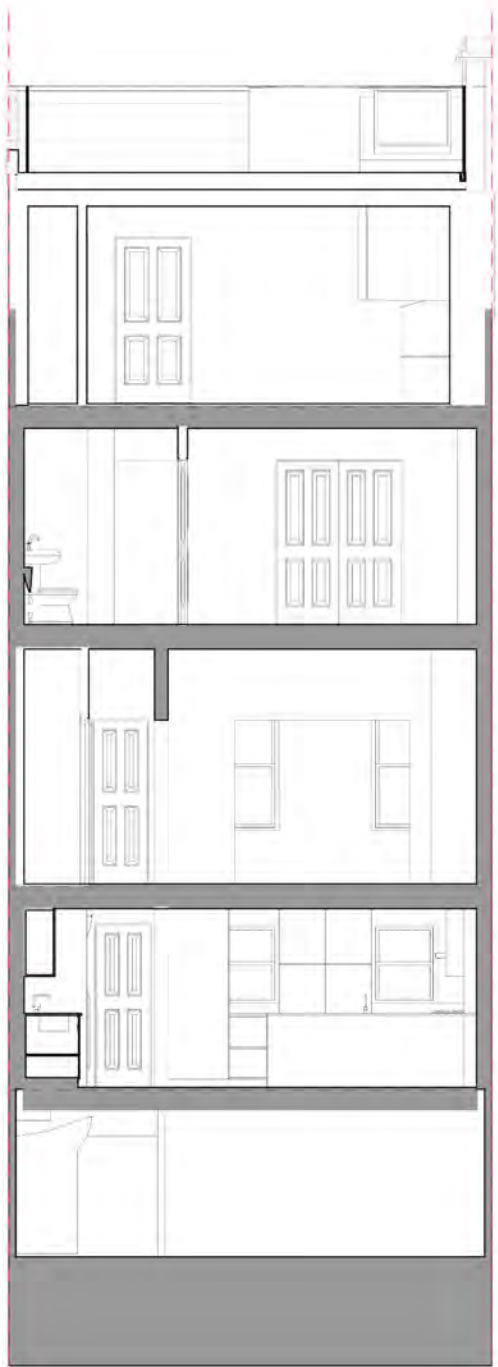
-6'-9"  
Basement











+40'-8 1/2"  
Ridge Line

13'-0"

+27'-8 1/2"  
Level 4

8'-11 1/2"

+18'-9"  
Level 3

10'-6"

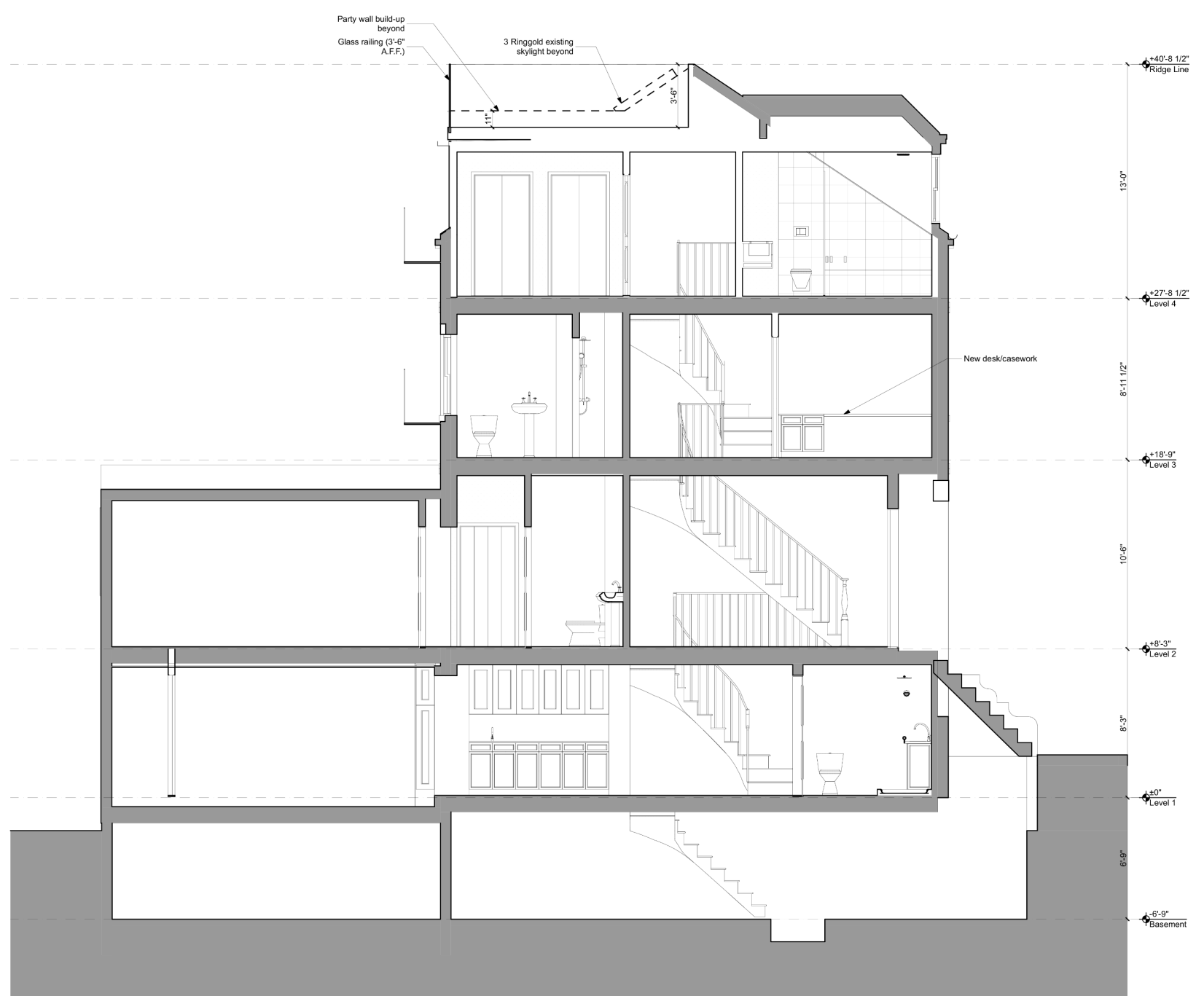
+8'-3"  
Level 2

8'-3"

+0"  
Level 1

6'-9"

-6'-9"  
Basement



Party wall build-up beyond  
Glass railing (3'-6" A.F.F.)

3 Ringgold existing skylight beyond

4'-11"

3'-6"

+40'-8 1/2"  
Ridge Line

13'-0"

+27'-8 1/2"  
Level 4

8'-11 1/2"

+18'-9"  
Level 3

10'-6"

+8'-3"  
Level 2

8'-3"

+0"  
Level 1

6'-9"

-6'-9"  
Basement

New desk/casework



