
Narrative Scope of Work - Boylston Street Landscape and Entry Steps Restoration

An earlier version of this project came before the Commission and included a stone and concrete ramp in the landscape of Boylston St. That project was interrupted by contractor difficulties and while it was on hold, the Church has rethought its approach to accessibility and has refocusing its efforts to continuing to provide access via the north entry steps on the alley side of the main entry.

Given that revised direction, the landscape design returns to the Commission much as it was in the past with the significant change being the elimination of any new permanent ramp, and the original design configuration of steps leading to the south door of the church vestibule.

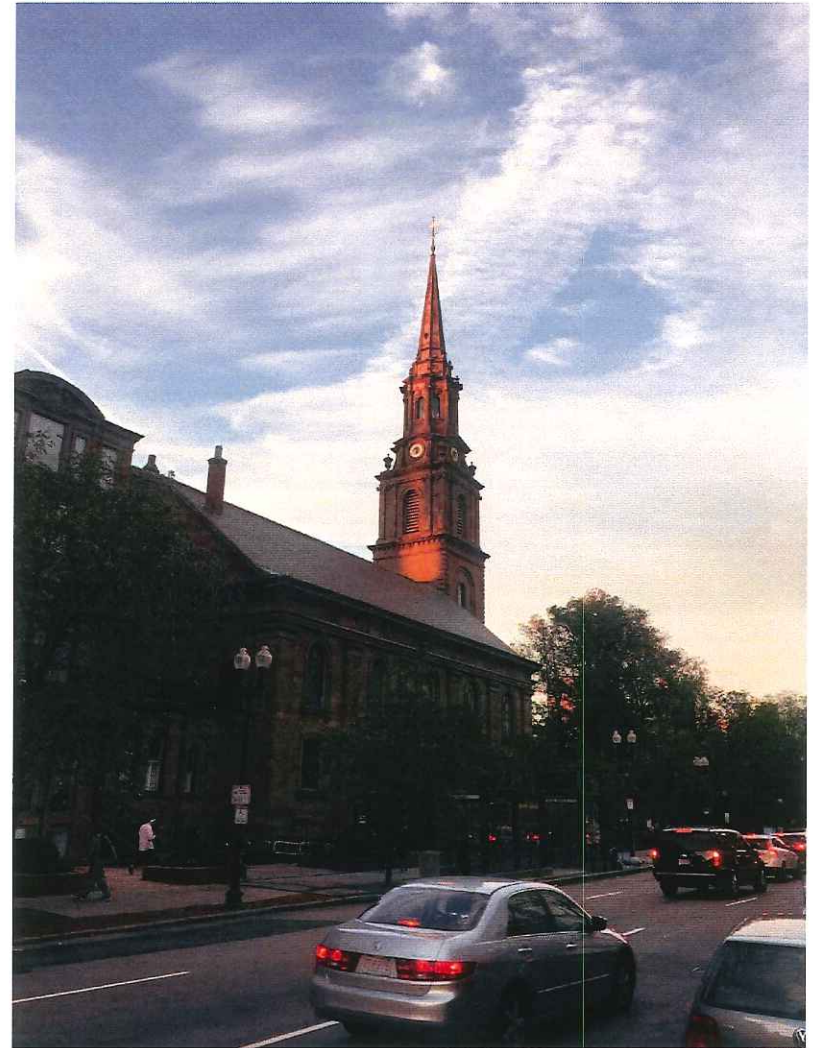
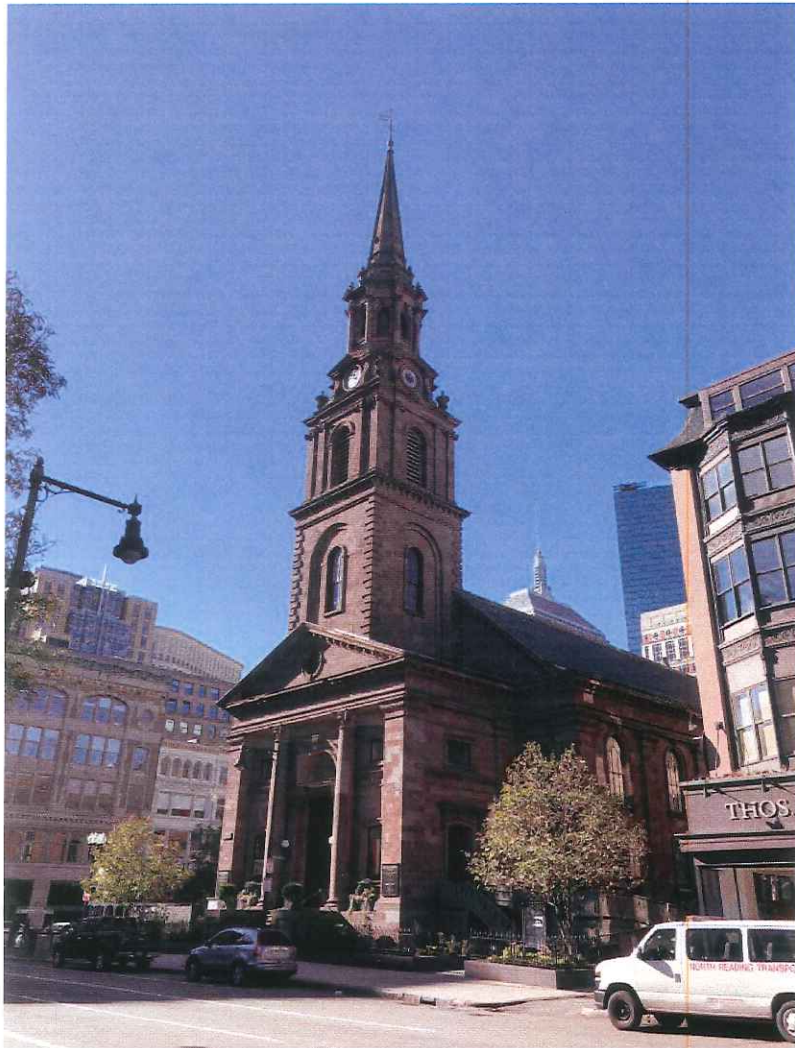
Unfortunately, during the early stages of the previous project, the south steps had already been removed. The scope of this project is now to restore those steps, as historically accurate as possible guided by available photo documentation and the north steps as a model, while incorporating other regulatory requirements. The intent is to utilize original brownstone pieces to the extent that they are available, structurally sound and suitable for reuse. A detailed inventory of available pieces and an assessment of their suitability will be led by a preservation design consultant and engaging a masonry conservator specializing in brownstone, historic mason advisor and structural engineer specializing in historic stone structures.

An outline of the approach to restoring the historic steps is as follows:

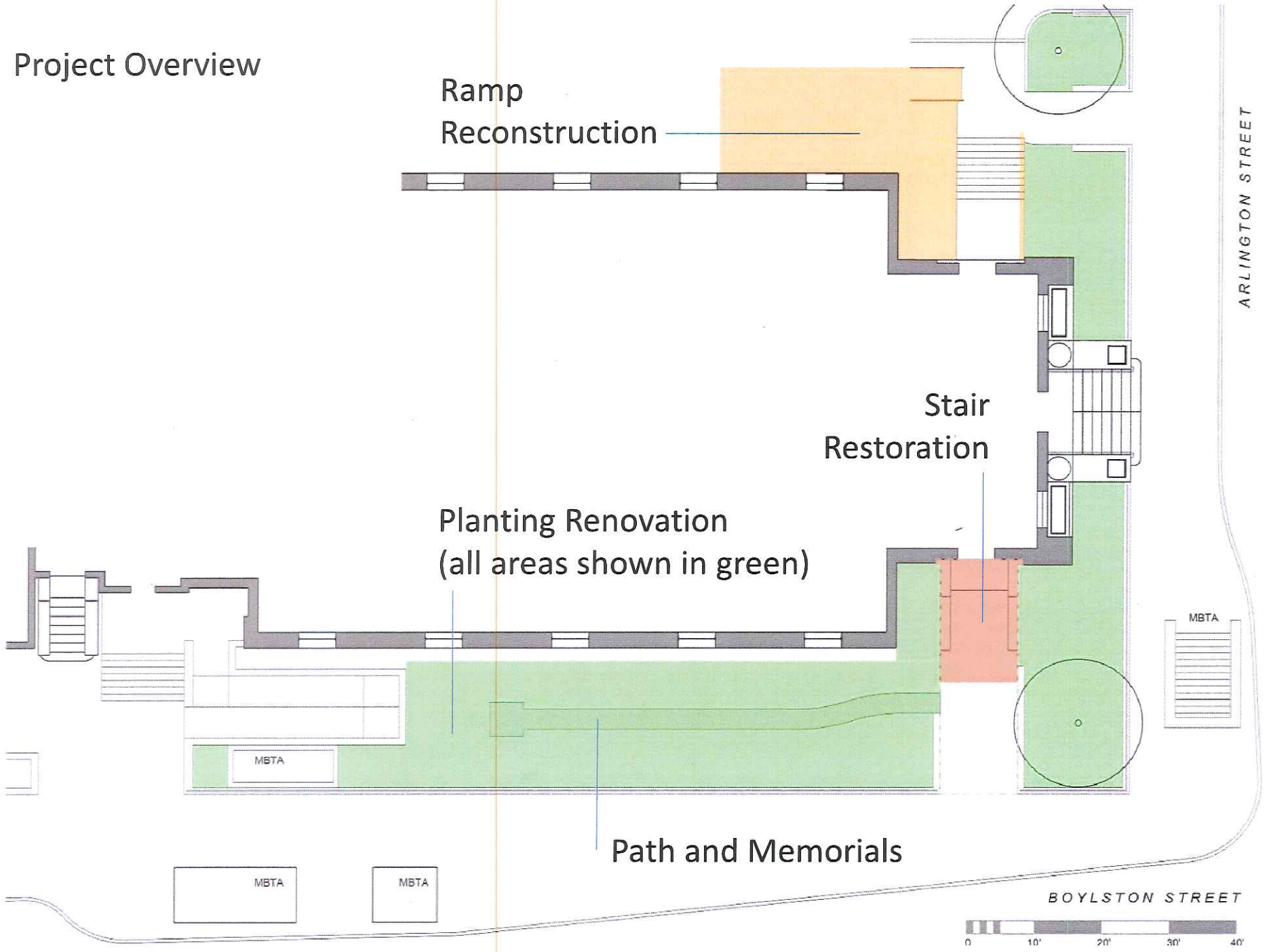
- Initial site visit and visual inspection for preliminary inventory/assessment of existing stone components currently piled on site:
 - Preliminary identification of original components.
 - Preliminary assessment of suitability for re-use in stair restoration, and likely conservation required.
 - Preliminary assessment of suitability as stock for future dutchman repairs to façade.
- Develop restoration approach, configuration, materials and details, such as:
 - Reuse of original brownstone components and related stone conservation.
 - Incorporation of new in-kind brownstone components where needed.
 - Possibility of utilizing cast stone substitute material where required.
 - Trafficable surface material selection and detailing.
- Sourcing of materials, such as:
 - Matching in-kind brownstone, with possible early purchase and storage by ASC.
 - Complementary stone more suitable for trafficable surfaces.
 - Cast stone, if applicable.
- Develop drawings, specifications and detailing sufficient for competitive bidding:
 - Intent is a traditional assembly accommodated by a contemporary foundation.
- Selection of historic mason contractor to include review and comment on final design, and:
 - Disassembly, detailed inventory/assessment of existing stone pile.
 - Confirm/adjust preliminary inventory/assessment that was basis for bidding.
 - Removal of pieces to storage or stack on site if possible.
 - Conservation treatments for existing stone components to be re-used.
 - New materials and execution of reassembly.

Arlington Street Church

Boston Landmarks Commission Boylston Beatification Project

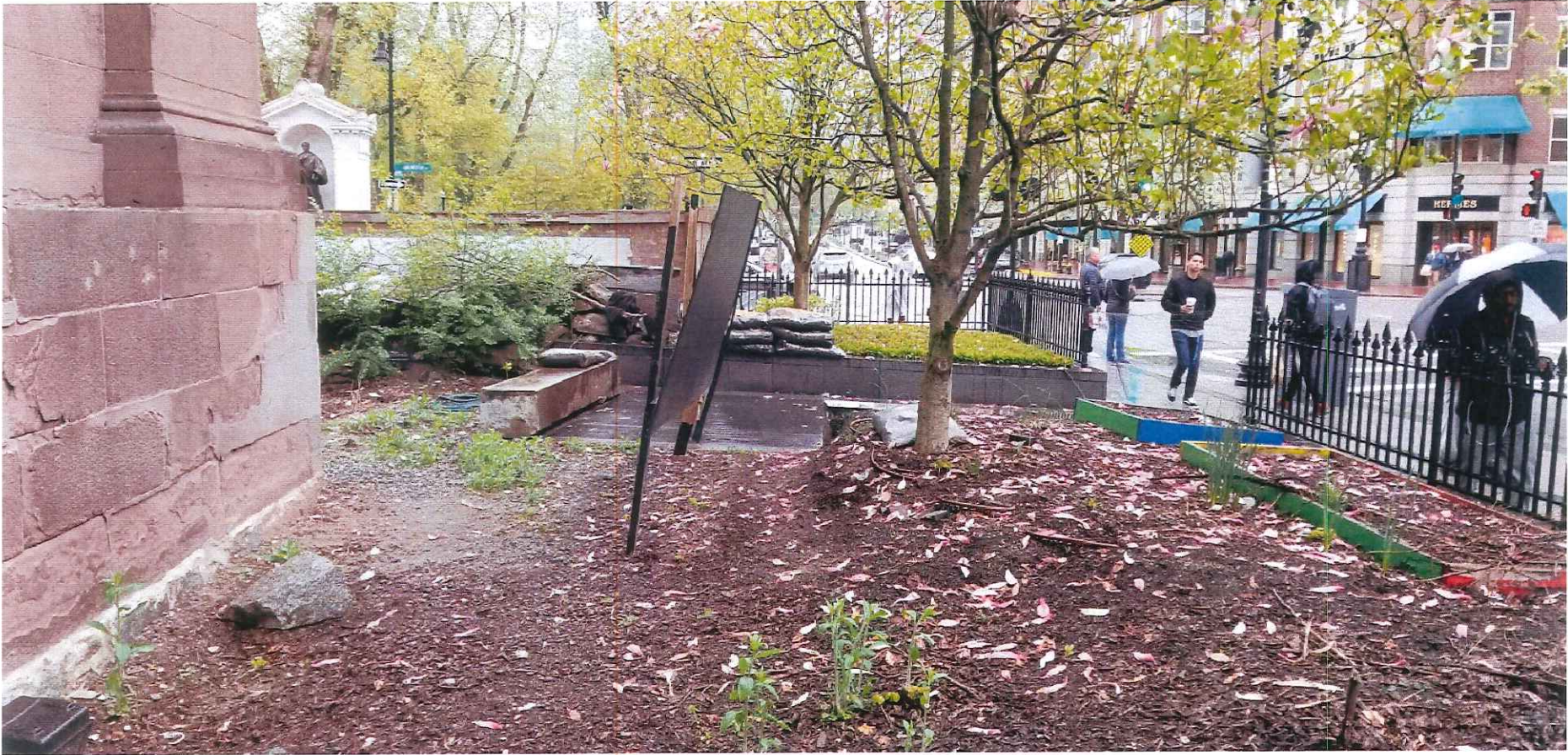


Project Overview



Boylston Beautification Project
Existing Conditions:











Discuss potential approach to stair restoration

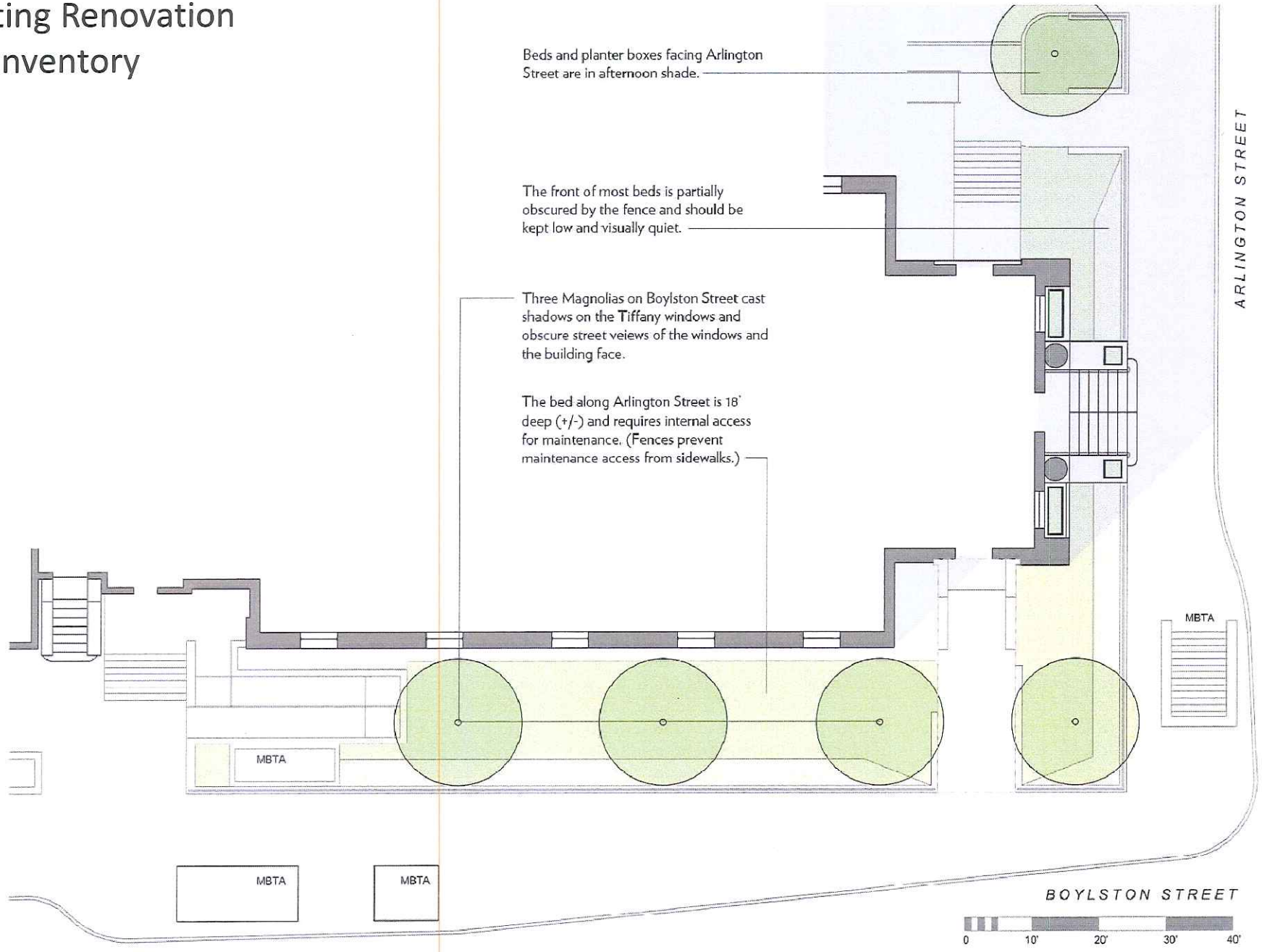
Planting Renovation Site Inventory

Beds and planter boxes facing Arlington Street are in afternoon shade.

The front of most beds is partially obscured by the fence and should be kept low and visually quiet.

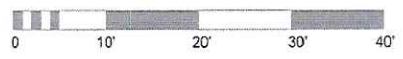
Three Magnolias on Boylston Street cast shadows on the Tiffany windows and obscure street views of the windows and the building face.

The bed along Arlington Street is 18' deep (+/-) and requires internal access for maintenance. (Fences prevent maintenance access from sidewalks.)



ARLINGTON STREET

BOYLSTON STREET



Planting Renovation Schematic Design

PLANTING LEGEND



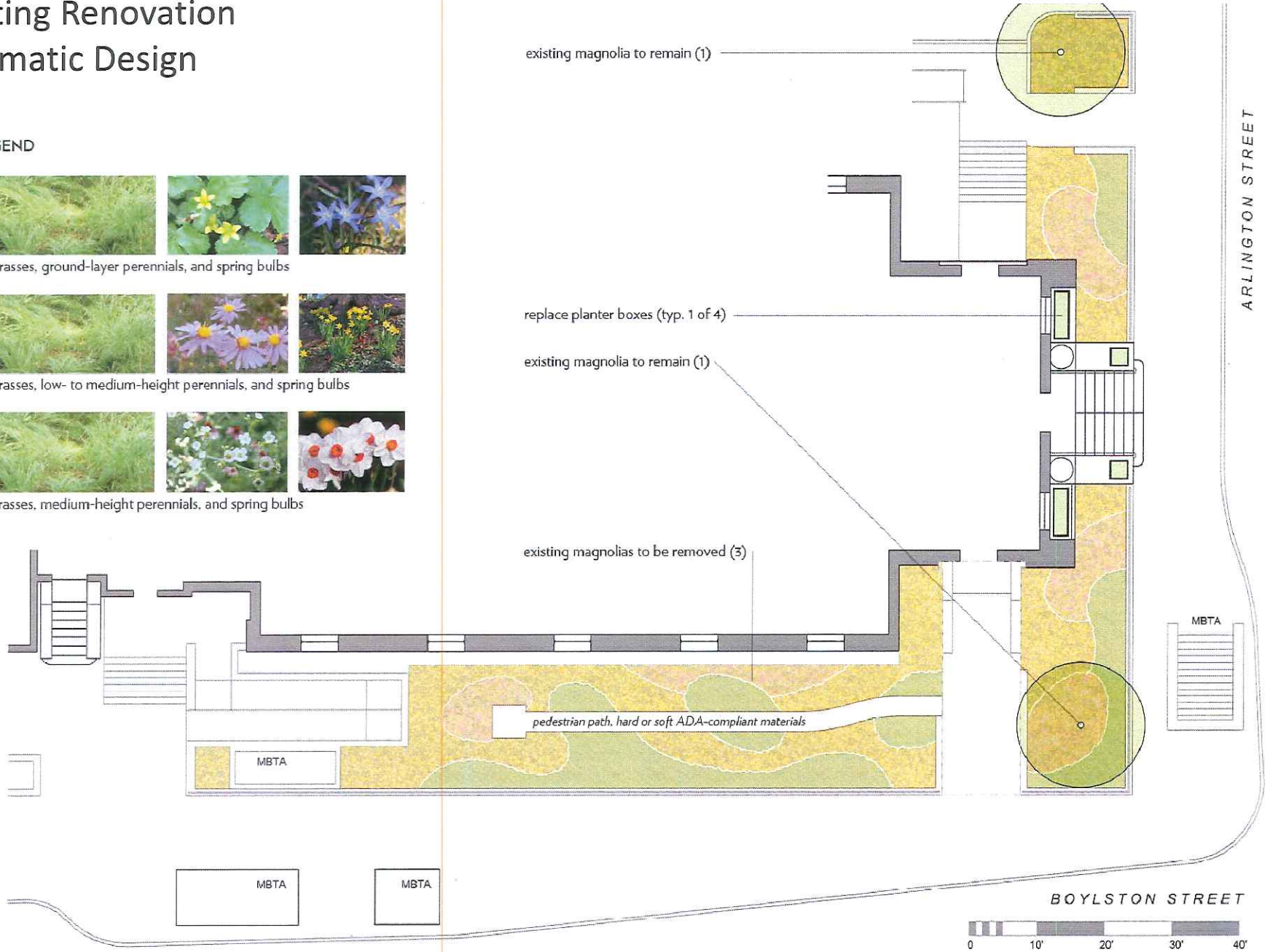
low grasses, ground-layer perennials, and spring bulbs



low grasses, low- to medium-height perennials, and spring bulbs



low grasses, medium-height perennials, and spring bulbs



North Alley Accessible Stair/Ramp Reconstruction

Existing Conditions:



Discuss potential approach to wood stair/ramp