

569 Boylston Street In-Line, Boston, MA

04205



BBAC Proposal

2019/03/20

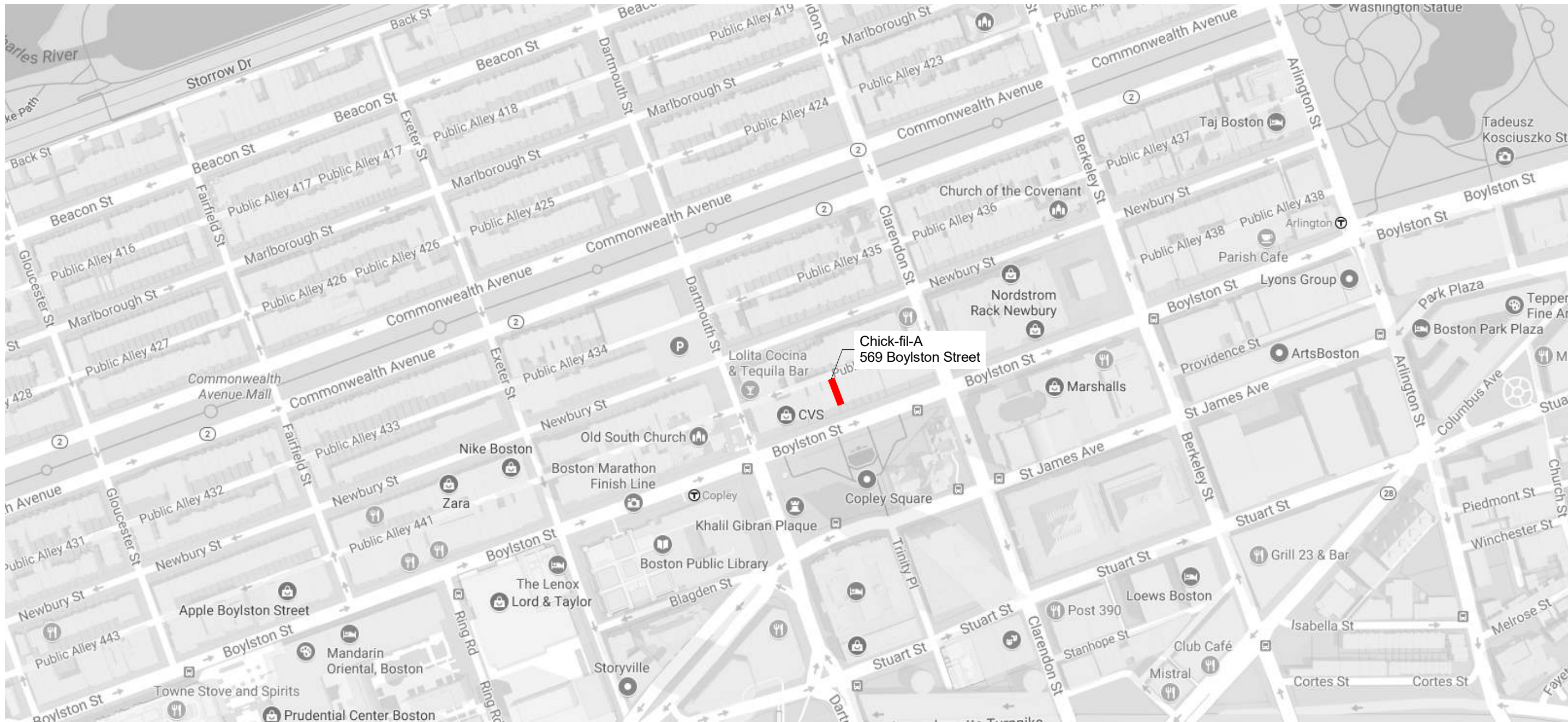


04205 , 569 Boylston Street In-Line , Boston, MA , In-Line

*The Chick-fil-A Design Intent Package represents a brand compliant design solution.
Site adapt professionals are responsible for application of design and compliance of ordinances and codes.*



Corporate Headquarters
5200 Buffington Road
Atlanta, GA 30349
Ph: (404) 765-8000



2019/03/20



Context Site Plan

04205 , 569 Boylston Street In-Line , Boston, MA , In-Line



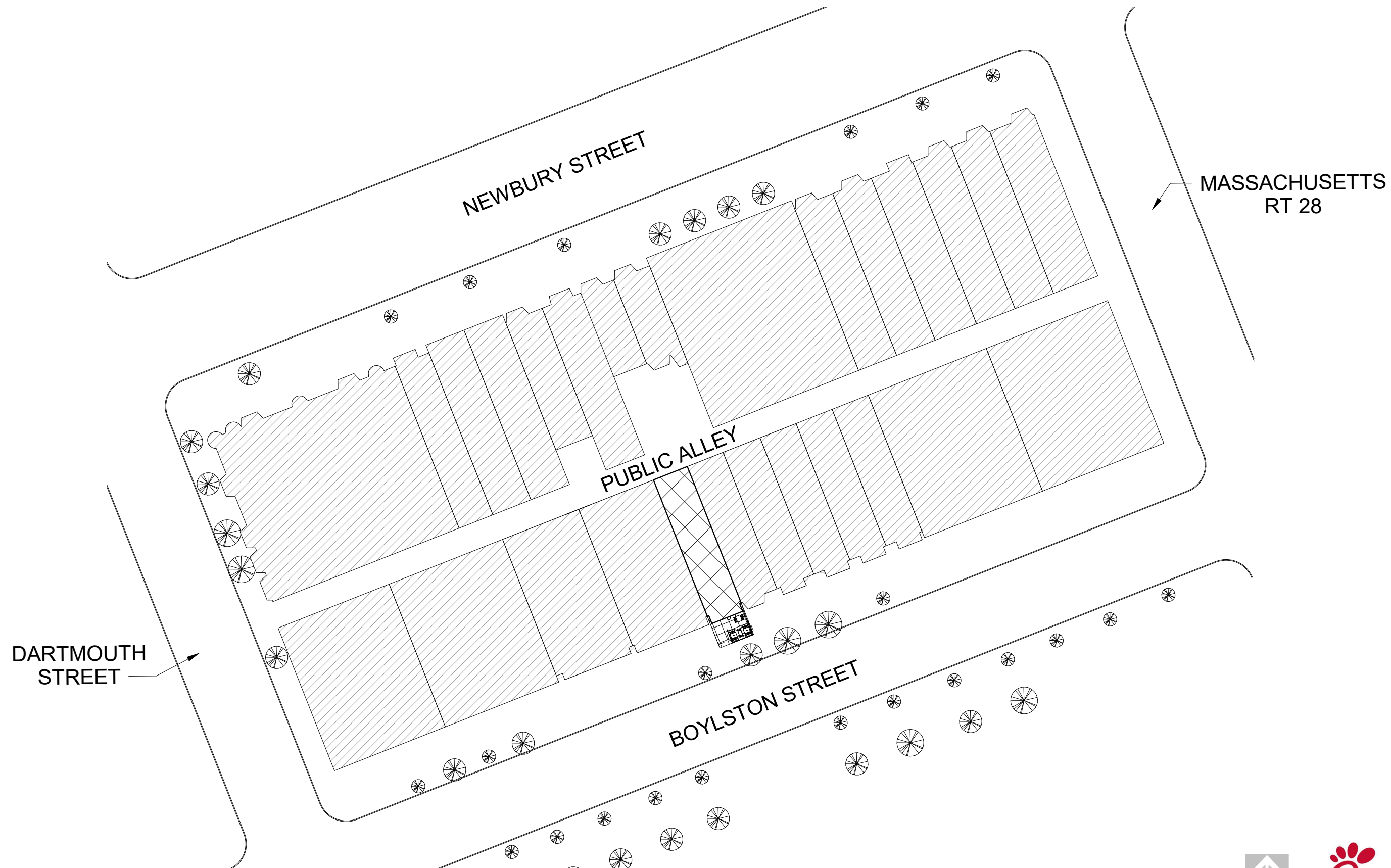
Corporate Headquarters
5200 Buffington Road
Atlanta, GA 30349
Ph: (404) 765-8000











DARTMOUTH STREET

NEWBURY STREET

PUBLIC ALLEY

BOYLSTON STREET

MASSACHUSETTS RT 28

2019/03/20

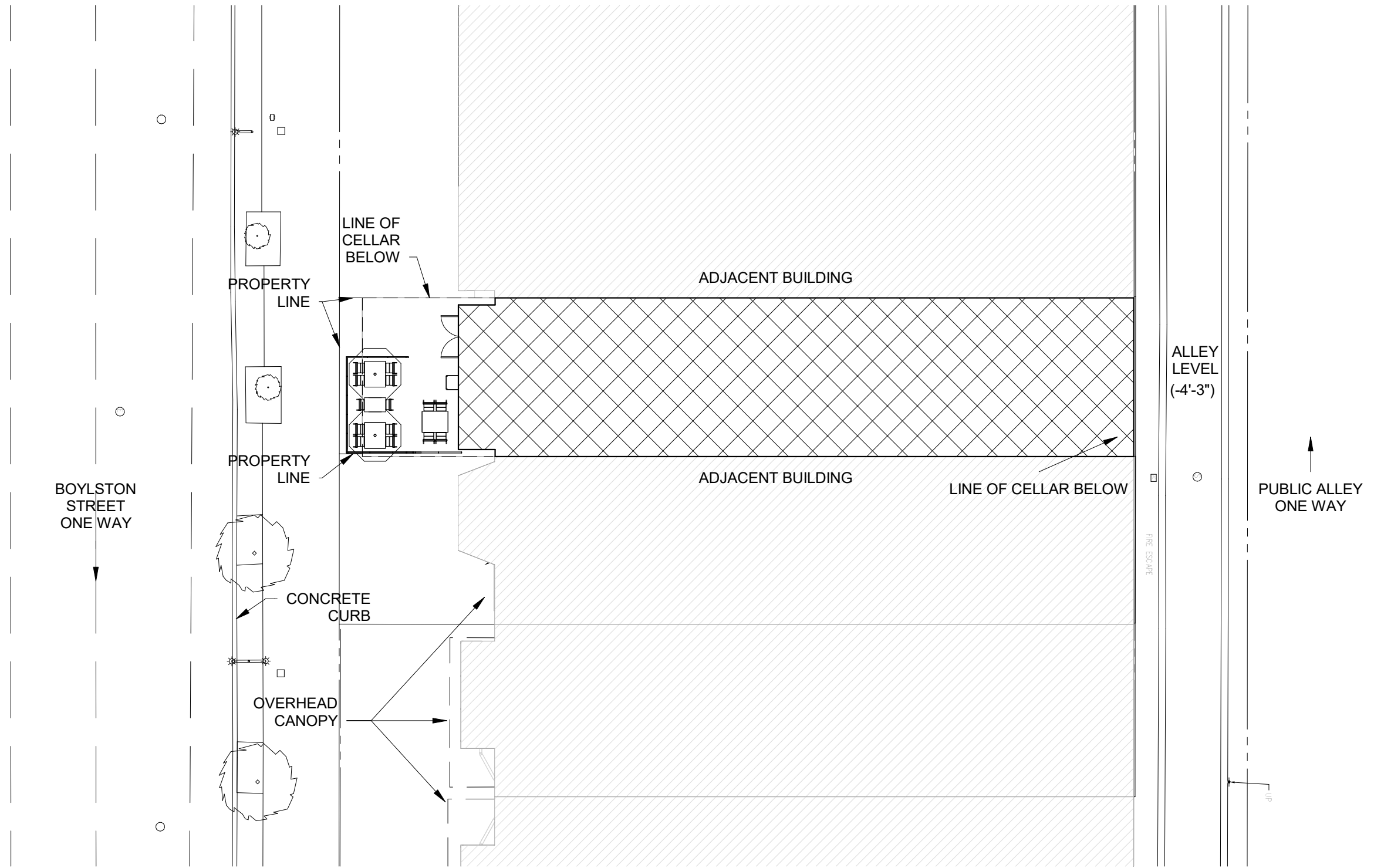


Block Plan



04205 , 569 Boylston Street In-Line , Boston, MA , In-Line

Corporate Headquarters
 5200 Buffington Road
 Atlanta, GA 30349
 Ph: (404) 765-8000



2019/03/20



Site Plan



04205 , 569 Boylston Street In-Line , Boston, MA , In-Line

Corporate Headquarters
5200 Buffington Road
Atlanta, GA 30349
Ph: (404) 765-8000



2019/03/20

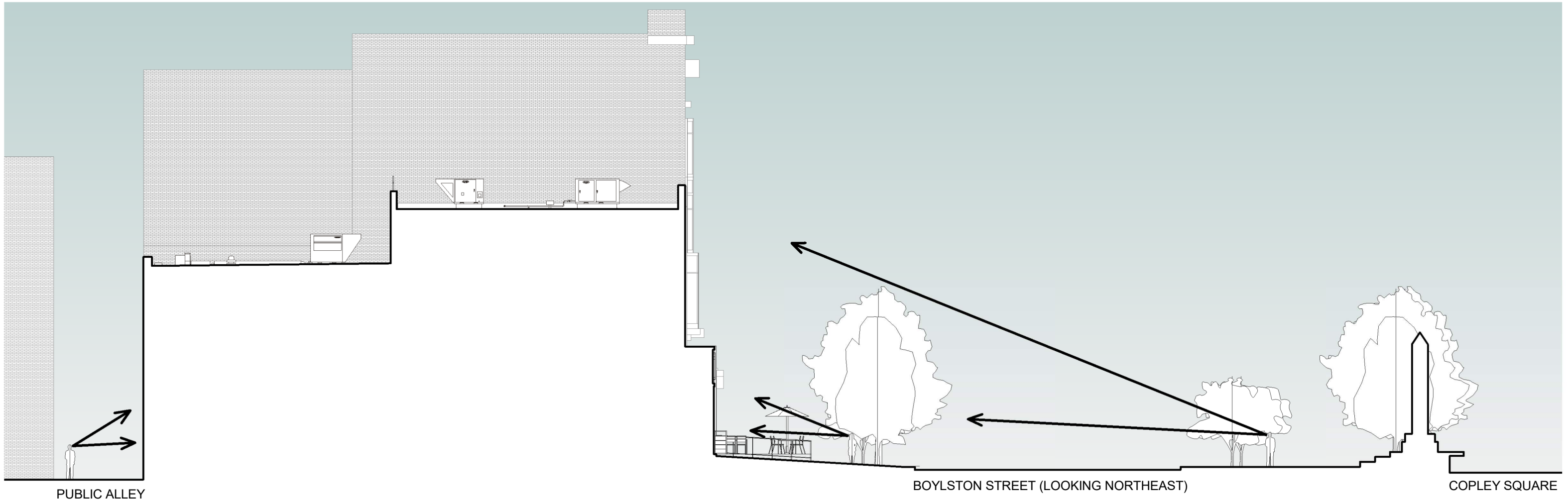
CD CHIPMAN
DESIGN
ARCHITECTURE

Boylston Street Elevation

04205 , 569 Boylston Street In-Line , Boston, MA , In-Line



Corporate Headquarters
5200 Buffington Road
Atlanta, GA 30349
Ph: (404) 765-8000



2019/03/20

CA CHIPMAN
DESIGN
ARCHITECTURE

Site-Line Section

04205 , 569 Boylston Street In-Line , Boston, MA , In-Line



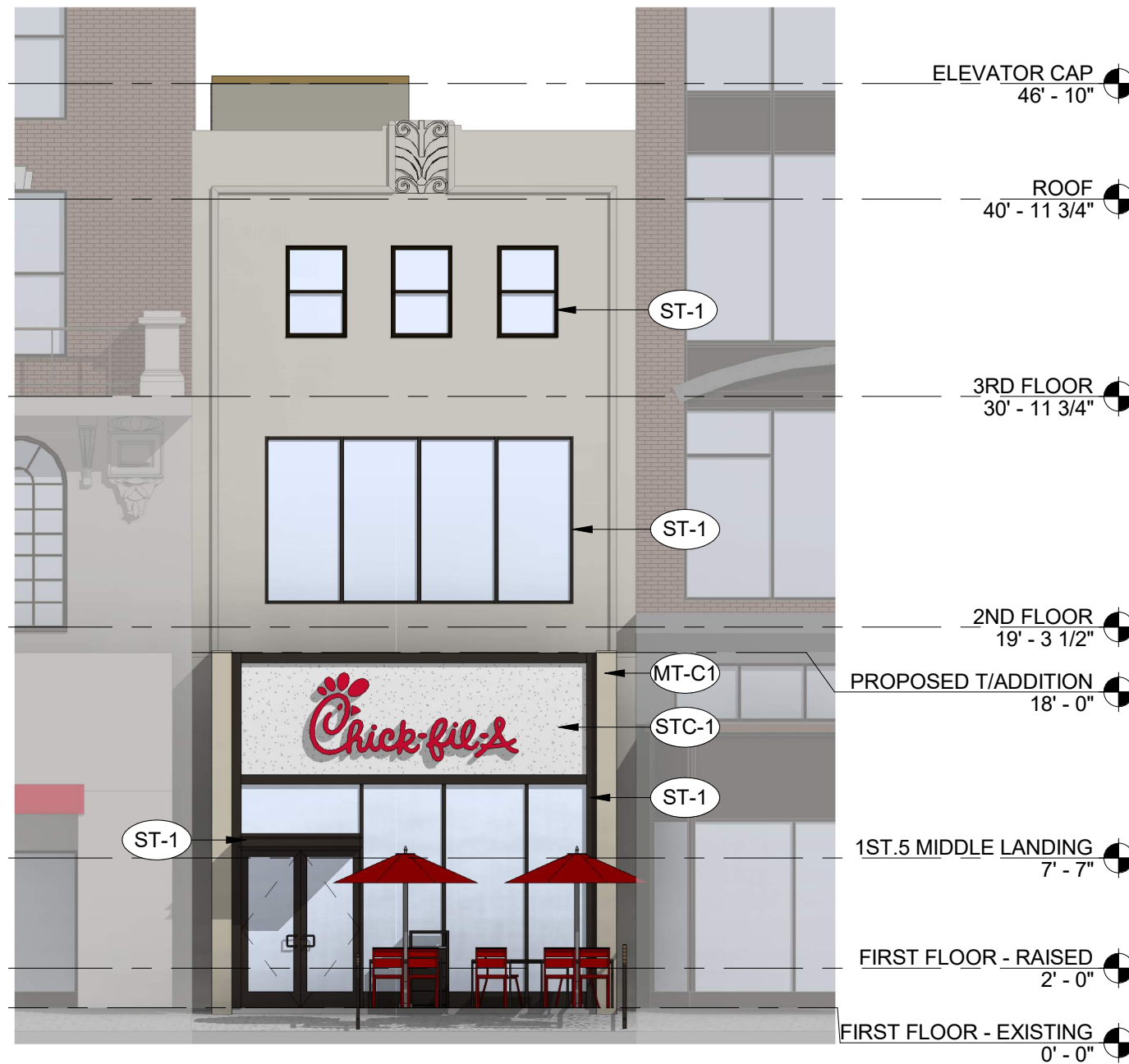
Corporate Headquarters
5200 Buffington Road
Atlanta, GA 30349
Ph: (404) 765-8000

PROPOSED EXTERIOR FINISHES

MT-C1	METAL PANELS. MANUFACTURER: ALUCOBOND. COLOR: ANODIC SATIN MICA
ST-1	STOREFRONT. YKK-YES 45. COLOR: MEDIUM BRONZE ANODIZED (MATTE)
STC-1	3-COAT STUCCO SYSTEM. COLOR: WHITE. FINISH: SAND MEDIUM
PT-9	SHERWIN WILLIAMS - SHER-CRYL HIGH PERFORMANCE ACRYLIC. #B66-350. COLOR: DARK BRONZE (SEMI GLOSS)
EC-2	PARAPET WALL COPING. DUROLAST/EXCEPTIONAL METALS. COLOR: MEDIUM BRONZE ANODIZED (MATTE)
MP-3	ALUMINUM FASCIA & SOFFIT. DUROLAST/EXCEPTIONAL METALS. COLOR: MEDIUM BRONZE ANODIZED (MATTE)



EXISTING ELEVATION



PROPOSED ELEVATION

Exterior Elevations

2019/03/20



04205 , 569 Boylston Street In-Line , Boston, MA , In-Line



Corporate Headquarters
5200 Buffington Road
Atlanta, GA 30349
Ph: (404) 765-8000

PROPOSED EXTERIOR FINISHES	
MT-C1	METAL PANELS. MANUFACTURER: ALUCOBOND. COLOR: ANODIC SATIN MICA
ST-1	STOREFRONT. YKK-YES 45. COLOR: MEDIUM BRONZE ANODIZED (MATTE)
STC-1	3-COAT STUCCO SYSTEM. COLOR: WHITE. FINISH: SAND MEDIUM
PT-9	SHERWIN WILLIAMS - SHER-CRYL HIGH PERFORMANCE ACRYLIC. #B66-350. COLOR: DARK BRONZE (SEMI GLOSS)
EC-2	PARAPET WALL COPING. DUROLAST/EXCEPTIONAL METALS. COLOR: MEDIUM BRONZE ANODIZED (MATTE)
MP-3	ALUMINUM FASCIA & SOFFIT. DUROLAST/EXCEPTIONAL METALS. COLOR: MEDIUM BRONZE ANODIZED (MATTE)



EXISTING ELEVATION



PROPOSED ELEVATION



2019/03/20

Exterior Elevations



04205 , 569 Boylston Street In-Line , Boston, MA , In-Line

Corporate Headquarters
 5200 Buffington Road
 Atlanta, GA 30349
 Ph: (404) 765-8000

EXISTING FINISHES



Existing Stone Veneer
(Front Facade)



Existing Metal Panel System
(Rear Facade)



Existing Wood Facade
(Front Facade)



Existing Brick
(Rear Facade)



Existing Storefront System
(Front Facade)

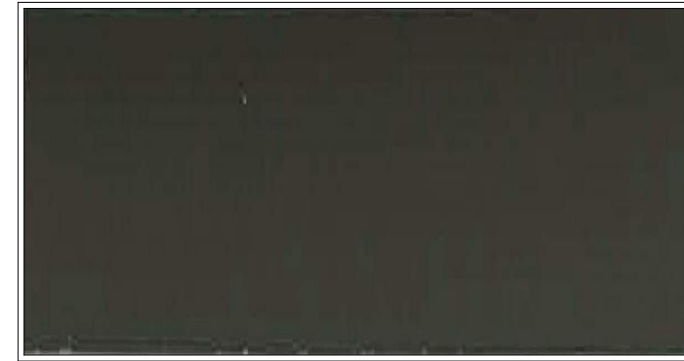
PROPOSED FINISHES



EC-2 Parapet Wall Coping
Durolast/Exceptional Metals
Color: Medium Bronze Anodized (Matte)



MT-C1 Metal Panels
Alucobond
Color: Anodic Satin Mica



PT-9
Sherwin Williams - Sher-Cryl High Performance Acrylic
#B66-350
Color: Dark Bronze (Semi-Gloss)



MP-3
Aluminum Fascia & Soffit
Durolast / Exceptional Metals
Color: Medium Bronze Anodized (Matte)



STC-1
3-Coat Stucco System
Color: White
Finish: Sand Medium



ST-1 Storefront
YKK - Yes 45
Color: Medium Bronze Anodized (Matte)

2019/03/20



Exterior Finishes

04205 , 569 Boylston Street In-Line , Boston, MA , In-Line



Corporate Headquarters
5200 Buffington Road
Atlanta, GA 30349
Ph: (404) 765-8000

A1	54" Chick-fil-A
Type:	Edge Lit Letters
Illumination:	Internally Illuminated LED
Square Footage:	47.63
To Grade:	Top of sign to grade = 16'-11" Bottom of sign to grade = 12'-5"



Existing



Proposed



Front Elevation (Southeast)

Scale: 1/8" = 1'-0"

Allowable Square Footage this Site:	TBD
Actual Square Footage this Elevation:	47.63

2019/03/20



Signage

04205 , 569 Boylston Street In-Line , Boston, MA , In-Line



Corporate Headquarters
5200 Buffington Road
Atlanta, GA 30349
Ph: (404) 765-8000

A1	54" Chick-fil-A
Type:	Edge Lit Letters
Illumination:	Internally Illuminated LED
Square Footage:	47.63
To Grade:	Top of sign to grade = 16'-11" Bottom of sign to grade = 12'-5"



A1 Sign Layout Detail
Scale: 1/2" = 1'-0"

This Product is Listed by
UNDERWRITERS LABORATORIES, INC.
and Bears the Mark:

Electrical Detail:

- Red LEDs
- (2) 60w Transformer
Total Amps: 2.2
- (1) 20 amp 120V Circuit Req.

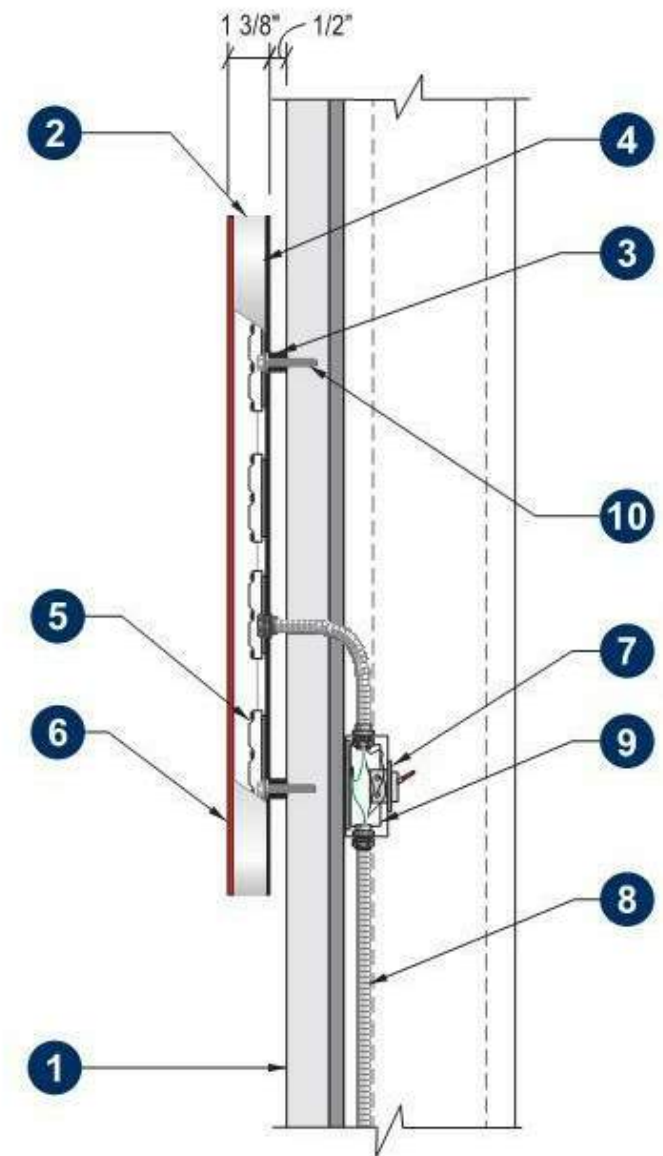
General Notes:

This sign is to be installed in accordance with the requirements of Article 600 of the National Electrical Code.

- 1) Grounded and bonded per NEC 600.7/NEC 250
- 2) Existing branch circuit in compliance with NEC 600.5, not to exceed 20 amps
- 3) Sign is to be UL listed per NEC 600.3
- 4) UL disconnect switch per NEC 600.6- required per sign component before leaving manufacturer*
*For multiple signs, a disconnect is permitted but not required for each section

Specifications: Channel Letters

1. Existing Facade: Stucco/ TBD
2. 1" thick white routed acrylic for edge lighting
3. 1/2" spacers
4. 1/8" Aluminum backs (interior of sign can painted white for maximum illumination)
5. White LEDs
6. 3/16" # 2793 Red Acrylic faces
7. Waterproof disconnect switch per NEC 600-6
8. Primary electrical feed
9. Transformers
10. Mounting method TBD



Section @ LED Channel Letter
Front/Edge-Lit (Remote) Scale: N.T.S.

2019/03/20

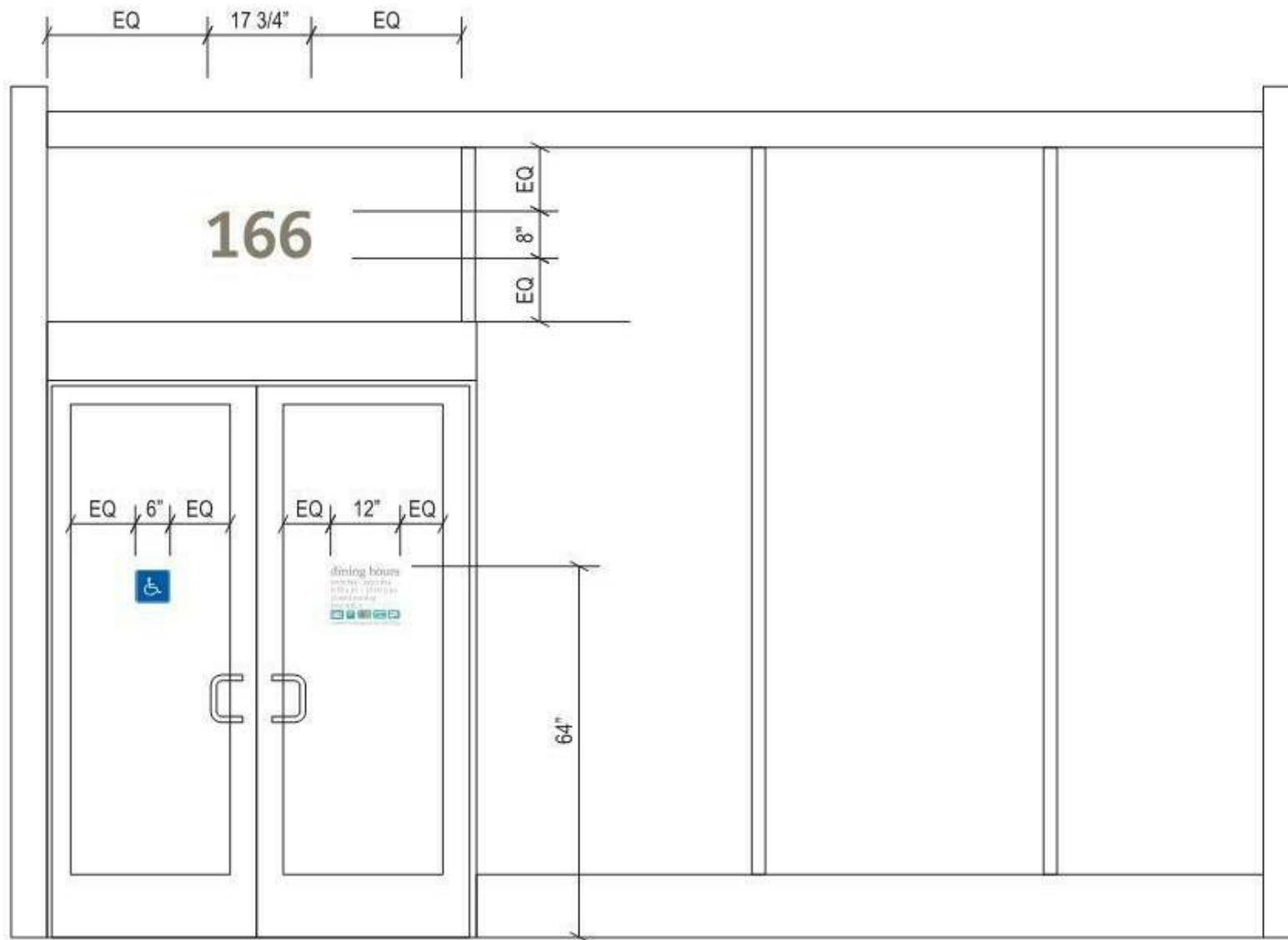


Signage

04205 , 569 Boylston Street In-Line , Boston, MA , In-Line

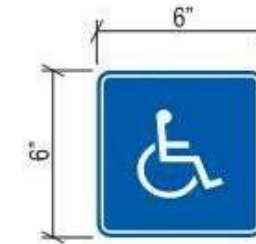


Corporate Headquarters
5200 Buffington Road
Atlanta, GA 30349
Ph: (404) 765-8000



Door Vinyl Elevation Detail

Scale: 3/8" = 1'-0"



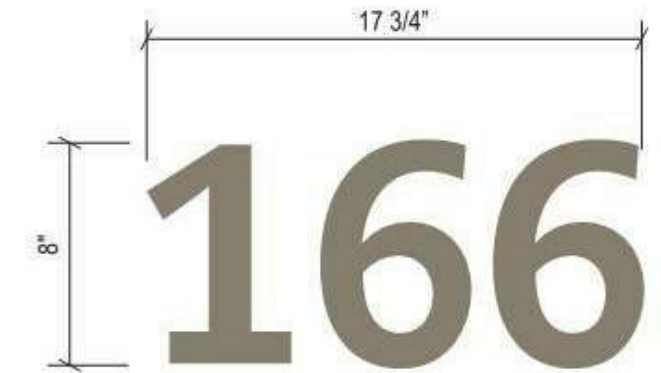
Door Graphics

Qty 1 Scale: 1 1/2" = 1'-0"

First surface applied graphics

■ Reflex blue

□ 3M #3290 Reflective White



Transom Address Vinyl

Qty 1 Set Scale: 1 1/2" = 1'-0"



Window Dining Hours

Qty 1 Scale: 3" = 1'-0"

2019/03/20



Signage

04205 , 569 Boylston Street In-Line , Boston, MA , In-Line

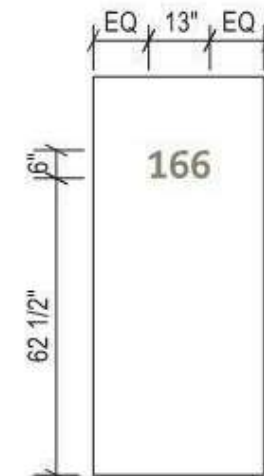


Corporate Headquarters
5200 Buffington Road
Atlanta, GA 30349
Ph: (404) 765-8000



Window Vinyl Graphic Layout Detail
 QTY 2 (East Elevation) Scale: 3/8" = 1'-0"

NOTE:
 Address vinyl will be on rear door in alleyway.



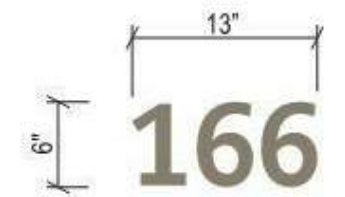
Vinyl Layout
 Scale: NTS



Rear Door Vinyl
 Qty 1 Scale: 1" = 1'-0"



Window Vinyl
 Qty 2 Scale: 1" = 1'-0"



White vinyl shown as Gray for clarity
Rear Address Vinyl
 Qty 1 Scale: 3/4" = 1'-0"

2019/03/20

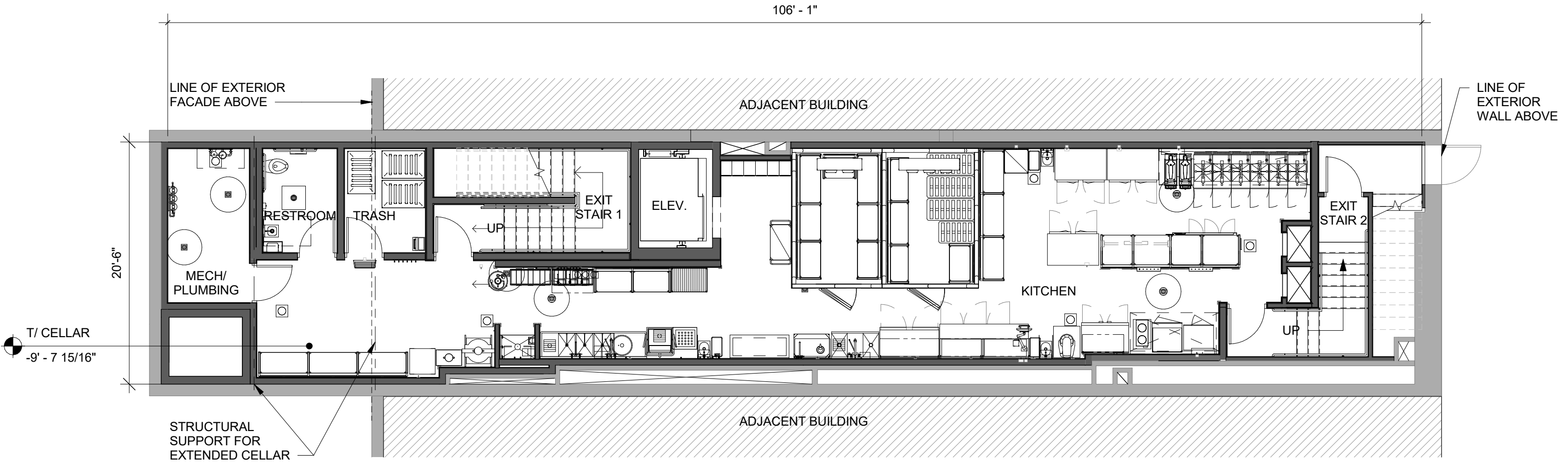


Signage

04205 , 569 Boylston Street In-Line , Boston, MA , In-Line



Corporate Headquarters
 5200 Buffington Road
 Atlanta, GA 30349
 Ph: (404) 765-8000



2019/03/20

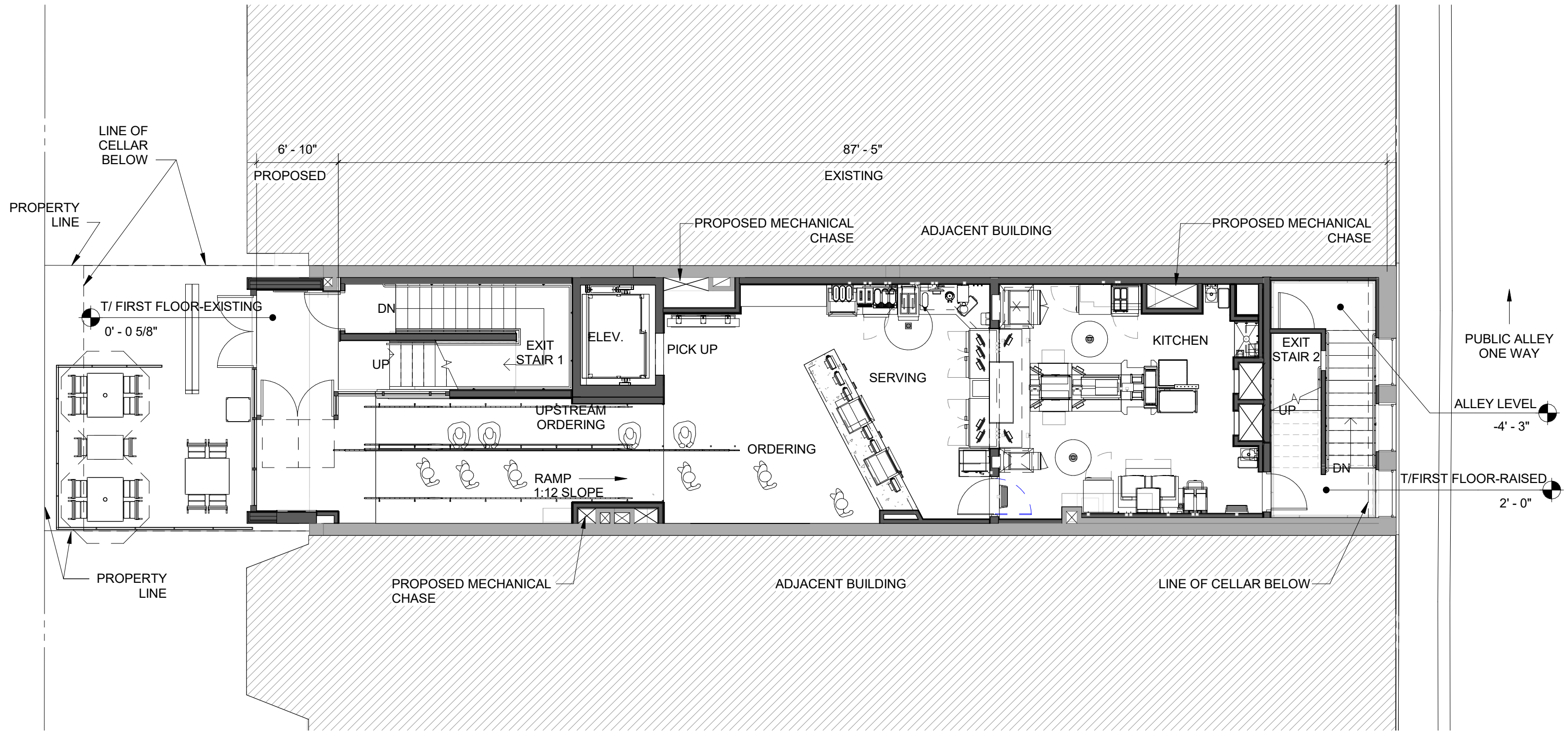
CD CHIPMAN
DESIGN
ARCHITECTURE

Cellar Floor Plan



04205 , 569 Boylston Street In-Line , Boston, MA , In-Line

Corporate Headquarters
5200 Buffington Road
Atlanta, GA 30349
Ph: (404) 765-8000



2019/03/20

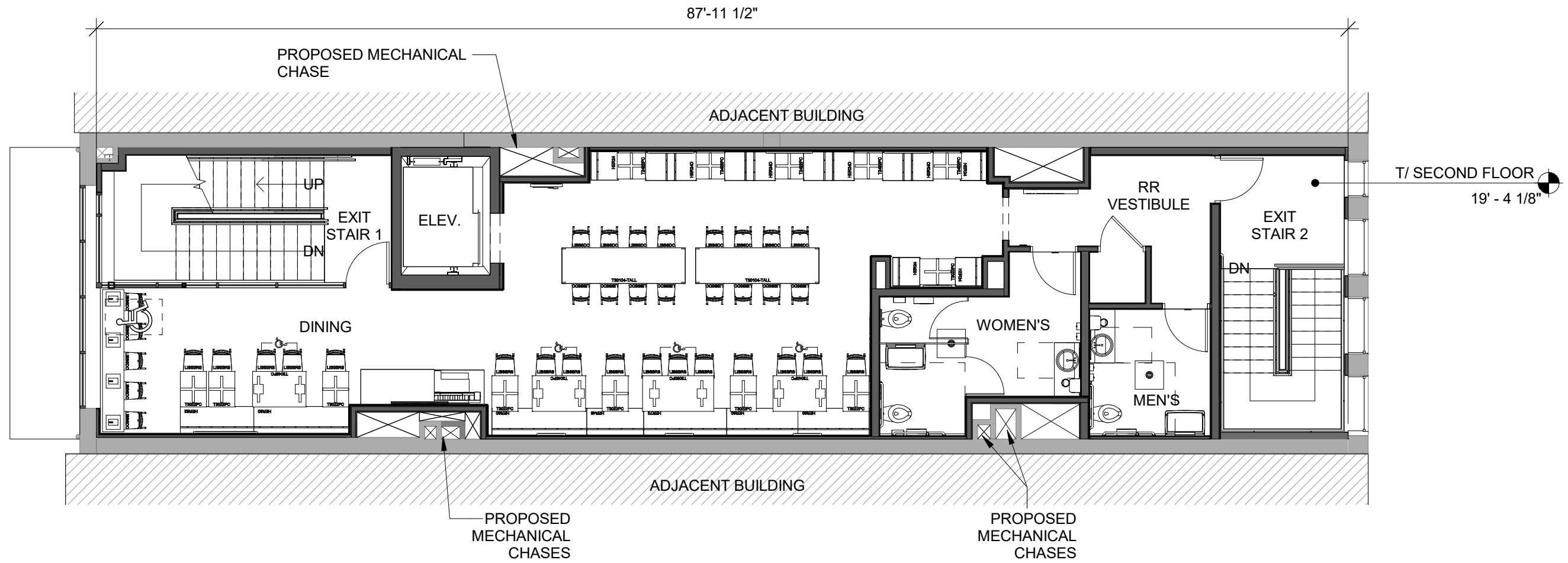


First Floor Plan



04205 , 569 Boylston Street In-Line , Boston, MA , In-Line

Corporate Headquarters
 5200 Buffington Road
 Atlanta, GA 30349
 Ph: (404) 765-8000



2019/03/20

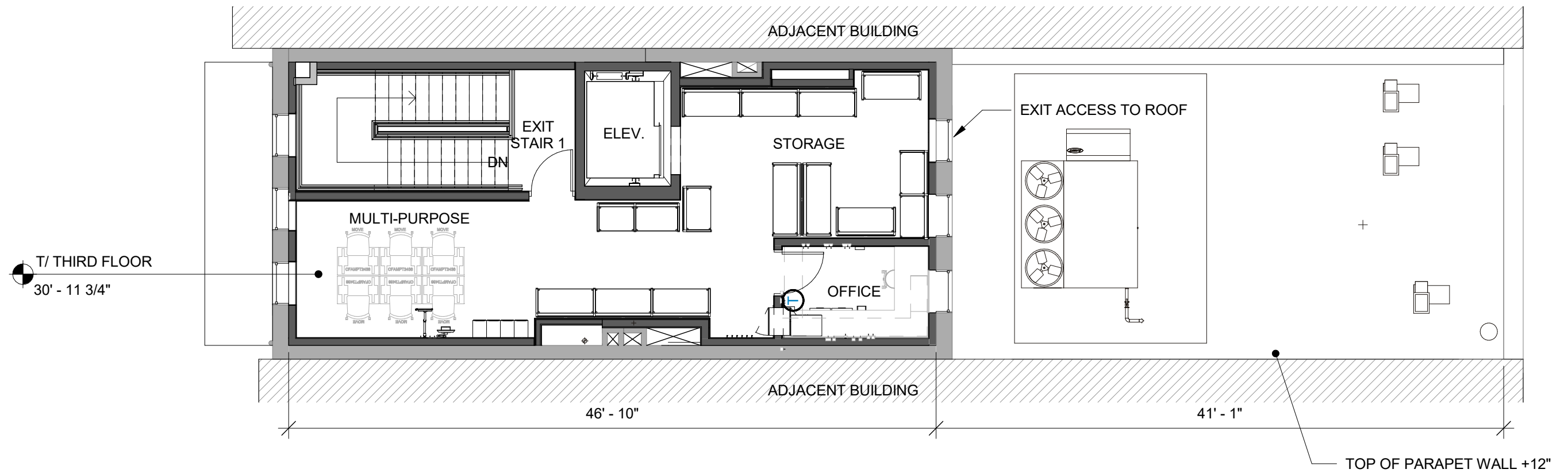


Second Floor Plan



04205 , 569 Boylston Street In-Line , Boston, MA , In-Line

Corporate Headquarters
 5200 Buffington Road
 Atlanta, GA 30349
 Ph: (404) 765-8000



2019/03/20

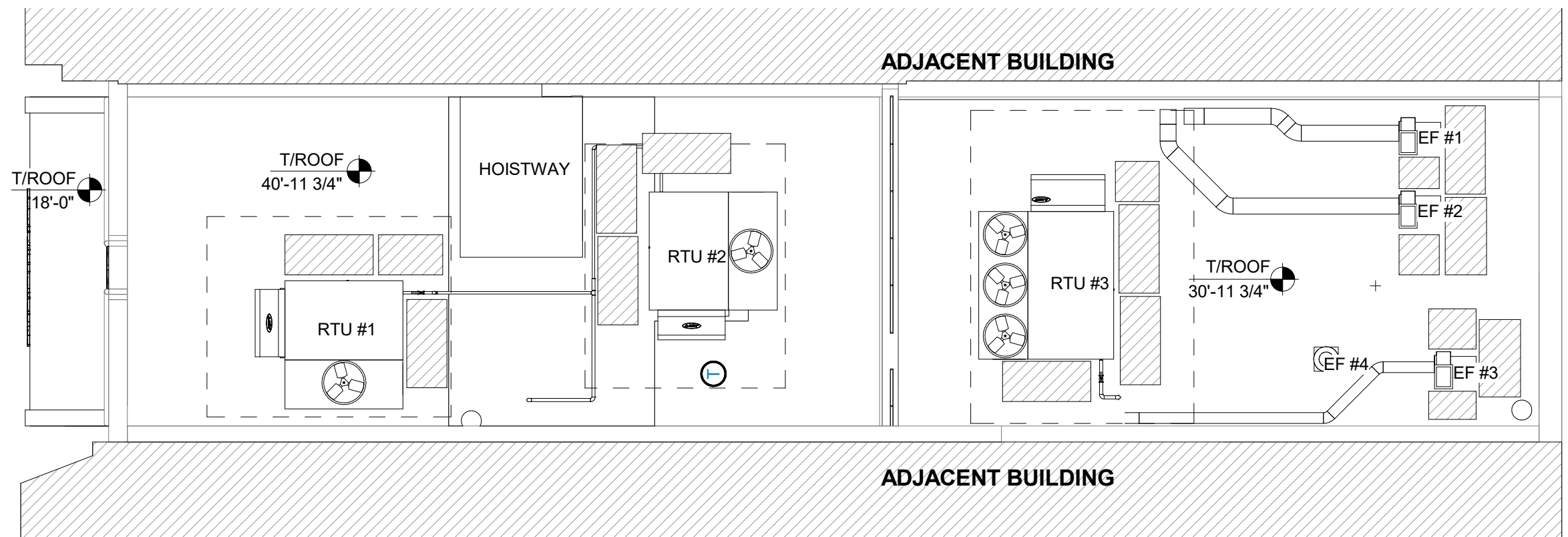


Third Floor Plan



04205 , 569 Boylston Street In-Line , Boston, MA , In-Line

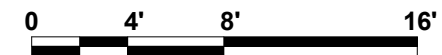
Corporate Headquarters
5200 Buffington Road
Atlanta, GA 30349
Ph: (404) 765-8000



2019/03/20

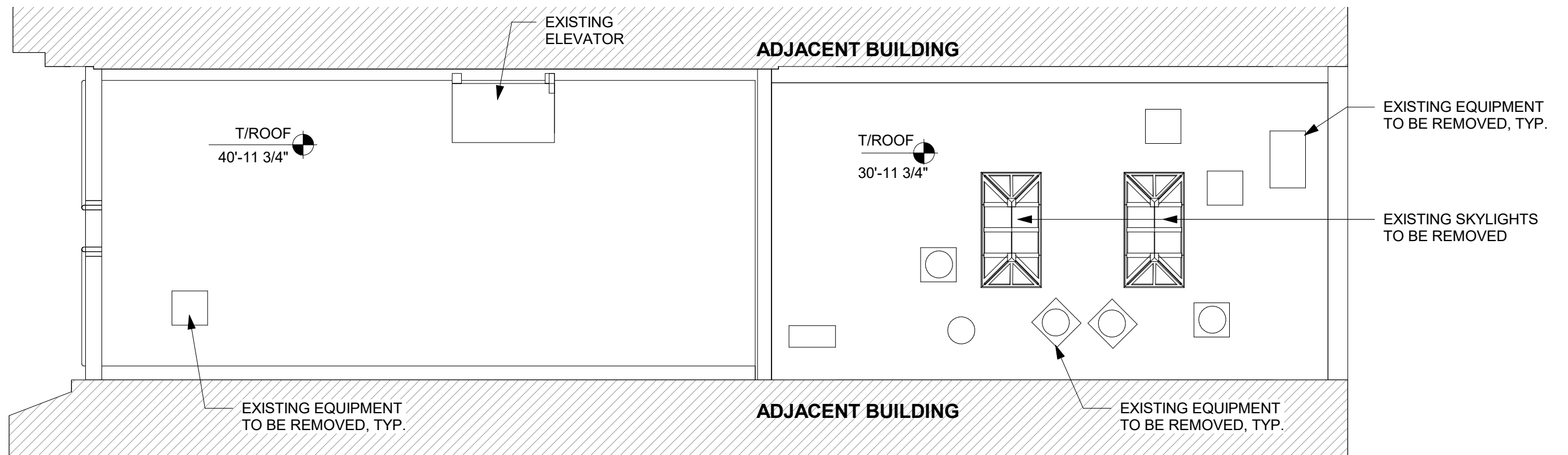


Roof Plan



04205 , 569 Boylston Street In-Line , Boston, MA , In-Line

Corporate Headquarters
 5200 Buffington Road
 Atlanta, GA 30349
 Ph: (404) 765-8000



2019/03/20



Existing Roof Plan



04205 , 569 Boylston Street In-Line , Boston, MA , In-Line

Corporate Headquarters
5200 Buffington Road
Atlanta, GA 30349
Ph: (404) 765-8000



NEW BLDG. 569 BOYLSTON ST.

DEC. 11, 1912.

473-B.

