



PREVIOUSLY APPROVED:
(E) CHIMNEY BEYOND -
SPOT POINT AS REQD

PREVIOUSLY APPROVED:
NEW COPPER DRIP EDGE

PREVIOUSLY APPROVED:
NEW COPPER GUTTER

PREVIOUSLY APPROVED:
REPLACE (E) SLATE
SHINGLES

PREVIOUSLY APPROVED:
REPAIR / REPAINT (E)
SIDING @ DAY

PREVIOUSLY APPROVED:
(N) COPPER GUTTER

PREVIOUSLY APPROVED:
REPLACE (E) SASH W/ NEW 1/2 SASH W/
INSULATED GLASS - MAINTAIN SASH
DIMENSIONS TO MATCH (E) - INSTALL
NEW 1/2 SCREENS. TYP. ALL EXIST.
WINDOWS - ALL EXIST. STORM
WINDOWS TO BE REMOVED

PREVIOUSLY APPROVED:
REPAIR OR REPLACE (E) CASING,
BRICK MOULD - REPAIR FRAMES/
SILLS - EPOXY PATCH WHERE ROTTED -
REPAINT/ CAULK ALL - TYP. ALL
EXISTING WINDOWS

PREVIOUSLY APPROVED:
SPOT POINT AS REQD - TYP

PREVIOUSLY APPROVED:
RELOCATE STONE BRACKETS

PREVIOUSLY APPROVED:
(N) COPPER DOWNSPOUT

(E) PTD. STONE HOOD -
PATCH / REPAIR / REPAINT
@ #47, 49, 51, & 53

PREVIOUSLY APPROVED:
(E) DOORS, FRAME,
TRANSOM TO REMAIN -
REFINISH DOORS /
RESTORE/ REPAINT
FRAMES / TRIM - REPLACE
HARDWARE W/ NEW POL.
BRASS HARDWARE

PREVIOUSLY APPROVED:
REMOVE (E) PENTHOUSE

PREVIOUSLY APPROVED:
EXHAUST VENTS BEYOND

PREVIOUSLY APPROVED:
(E) WOOD DORMER TRIM
TO REMAIN - PATCH/
REPAIR/ PAINT

PREVIOUSLY APPROVED:
A.C. CONDENSERS - BEYOND

PREVIOUSLY APPROVED:
REPAIR & REPAINT ALL
WOOD TRIM

PREVIOUSLY APPROVED:
REPAIR (E) ROT ON SILL / TRIM
@ WINDOWS - REPAINT (TYP)

PREVIOUSLY APPROVED:
SCRAPE & PAINT (E)
BALCONY TO REMAIN
(TYP)

PREVIOUSLY APPROVED:
REPAIR ALL EXTERIOR
METAL WORK

PREVIOUSLY APPROVED:
REMOVE (E)
BALCONIES

(E) PAINTED STONE
HEADERS AND SILLS -
PATCH / REPAIR / REPAINT -
TYP. @ #47, 49, 51, & 53
EAST ELEVATION

PREVIOUSLY APPROVED:
REMOVE (E)
BALCONIES

PREVIOUSLY APPROVED:
ALL STONE WORK AT #45
- STRIP PAINT / CLEAN
AND PATCH AS
NECESSARY WITH TINTED
MORTAR TO MATCH (E)
STONE TYP. (COMPLETED)

PREVIOUSLY
APPROVED:
SPOT POINT ALL
BRICK & CLEAN - TYP.
BRICK 30% OF ALL (E)
BRICK SURFACES -
ALL 5 BUILDINGS

PREVIOUSLY APPROVED:
REPLACE (E) SURFACE
MTD LIGHT (TYP)

PREVIOUSLY APPROVED:
(E) RECESSED BRICK PANEL

(E) PTD. STONE BAND - PATCH/
REPAIR / REPAINT - TYPICAL @
#47, 49, 51 & 53 HEREFORD,
EAST ELEVATION

PREVIOUSLY APPROVED:
REFINISH FRONT
DOORS & REPAINT TRIM

PREVIOUSLY APPROVED:
REFINISH FRONT
DOORS & REPAINT TRIM

HEREFORD ST.

PREVIOUSLY APPROVED:
(N) BRASS DOOR HARDWARE

PREVIOUSLY APPROVED:
REPLACE (E) MAIL SLOT W/
(N) BRASS MAIL SLOT

PREVIOUSLY APPROVED:
REPLACE (E) INTERCOM -
RECESSED IN JAMB

(E) SPALLED STONE - PATCH / REPAIR/
REPAINT - TYPICAL ALL STONE TRIM,
STAIRS, BELTS, CURBS, SILLS, AND
LINTELS, #47, 49, 51 & 53
HEREFORD @ EAST ELEVATION

EAST ELEVATION
SCALE: 1/4" = 1'-0"

46 Waltham Street, Suite 2A
Boston, MA 02118
Phone 617.956.9992
Fax 917.956.9993

GD GRASSI DESIGN GROUP
BG BEAUCHEMIN GRASSI INTERIORS

JOB NO. 1612
SCALE: 1/4" = 1'-0"
DATE: 11.20.17
09.17.18
REVISED

45-53 HEREFORD ST
BOSTON, MA

EAST ELEVATION

A10



#47-53 Hereford



#49-53 HEREFORD



1975 116 125 1000 10



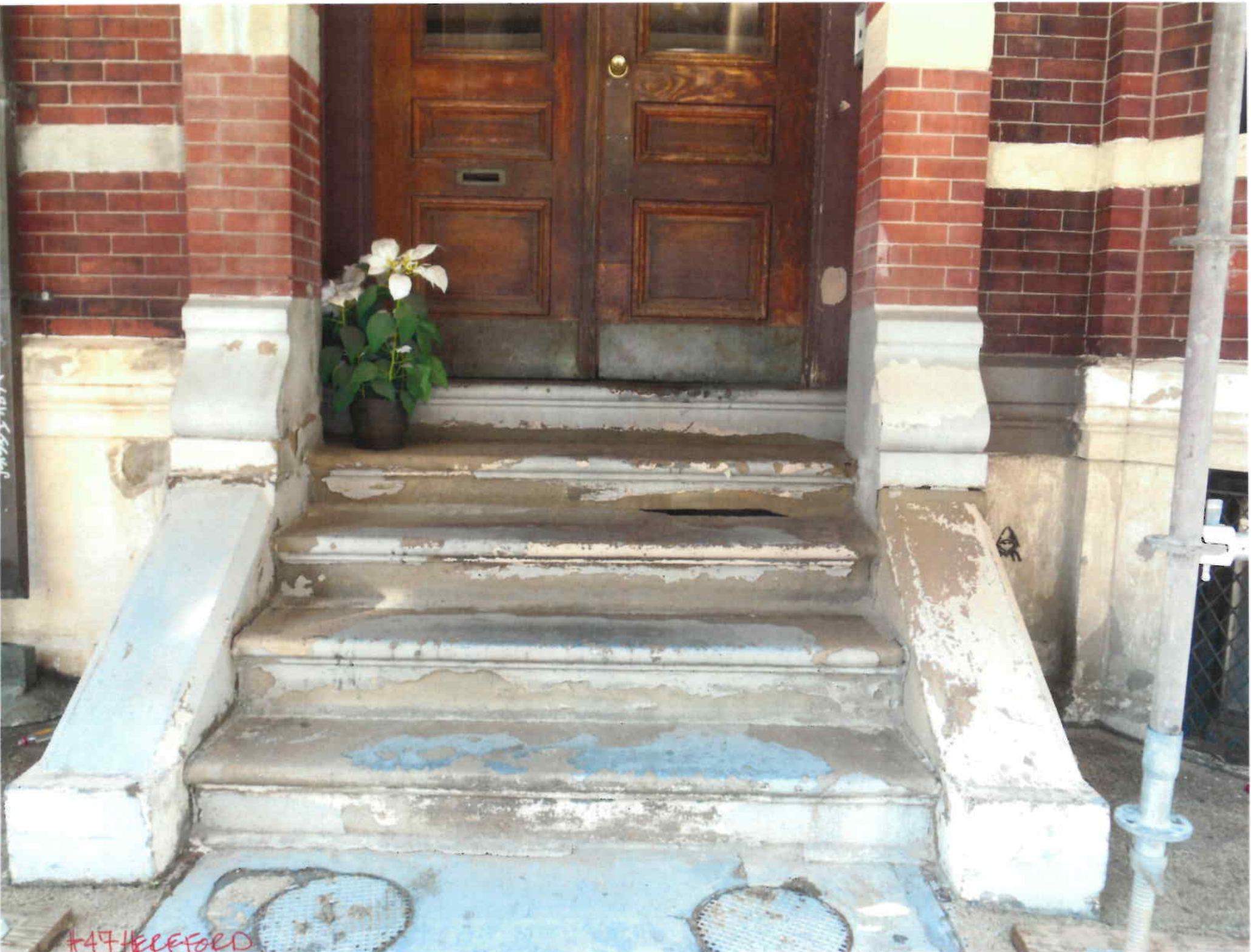
#53-51 Hereford



#47 HEREFORD



#44 HEREFORD



#47 HEREFORD



#49 HERE FOR



#49 HOFFERFORD



ASSURER



#49 HERE.FORD

7-25-11



49 1676210



#51 Hereford



#51 HEREFORD



BEHOLD THE WORLD



#53 HERE FOR 1)

Sample of Stripped Areas









#45 Hereford Street:

Stripped and patched with tinted mortar



PAINT STRIPPED @ #45 - EAST SIDE JAN. 2017



PAINT STRIPPED @ # 45 - EAST SIDE JAN 2017





