

Back Bay - South End

Prudential

Huntington at Belvedere

Columbus at W Canton

Tremont St at W. Dedham

Washington St at E. B

Mass Ave T

Tremont St at Northamp...

Google My Maps

345 Har

Harris

Traveler St

East Berkeley Street

Paul Sullivan Wa

Randolph St

Union Park St

Malden St

Harrison Ave

E Newton St

Shawmut Ave

Tremont St

Boylston St

Dulton St

Belvidere St

Huntington Ave

Massachusetts Ave

Worcester St

W Springfield St

Camden St

Warwick St

Trinity Pl

Dartmouth St

Chandler St

Lawrence St

Appleton St

Dartmouth Pl

Warren Ave

W Canton St

W Dedham St

Washington St

Shawmut Ave

Washington St

W Dedham St

W Canton St

W Dedham St

W Dedham St

W Dedham St

W Dedham St

W Dedham St

W Dedham St

W Dedham St

W Dedham St

W Dedham St

Curies St

Tremont St

Marginal Rd

Washing

Pine St

Herald St

Shawmut Ave

Paul Pl

Village Ct

Dwight St

Milford St

Hanson St

Waltham St

Tremont St

W Canton St

W Canton St

W Canton St

W Canton St

W Canton St

W Canton St

W Canton St

W Canton St

W Canton St

W Canton St

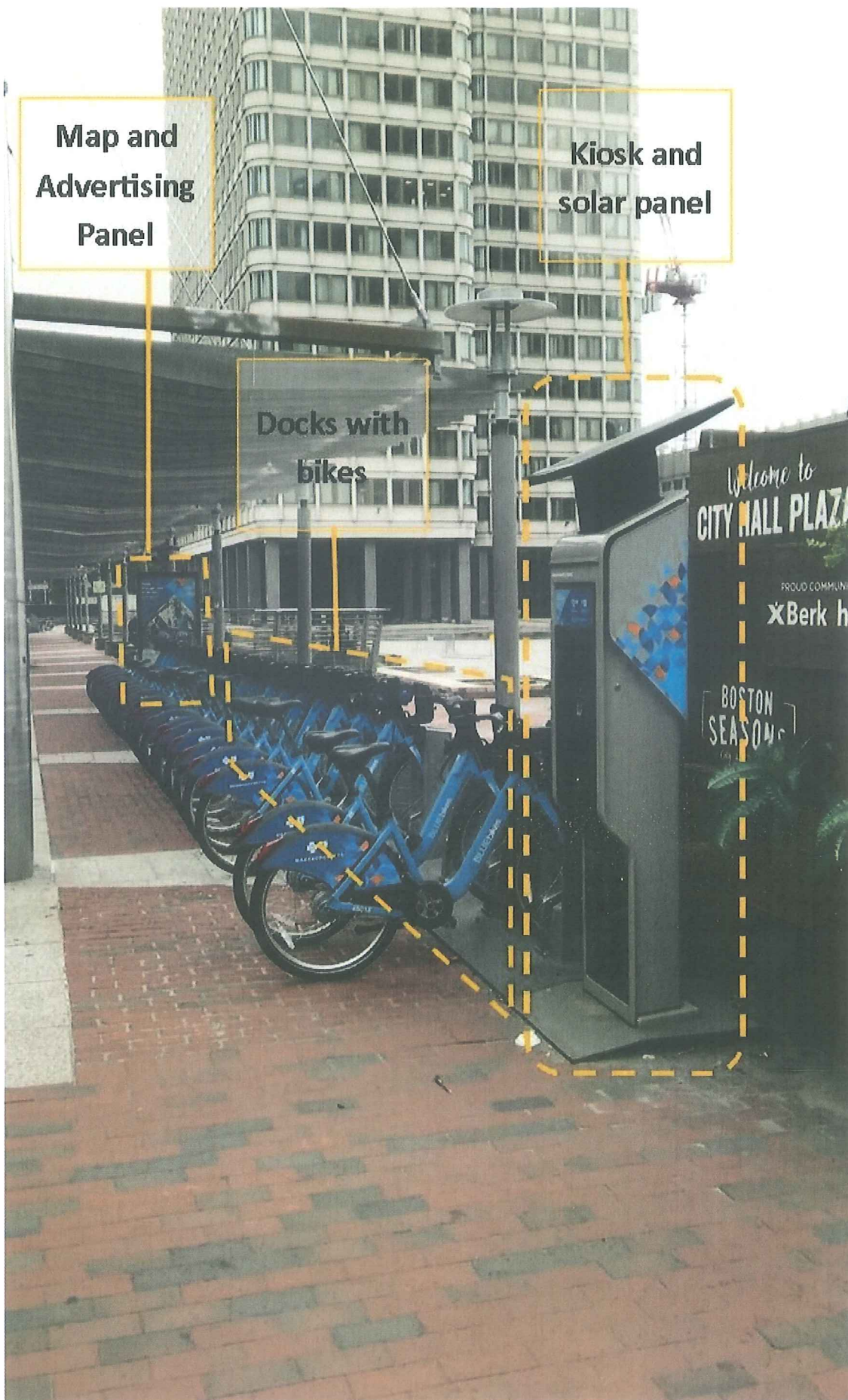
W Canton St

W Canton St

W Canton St

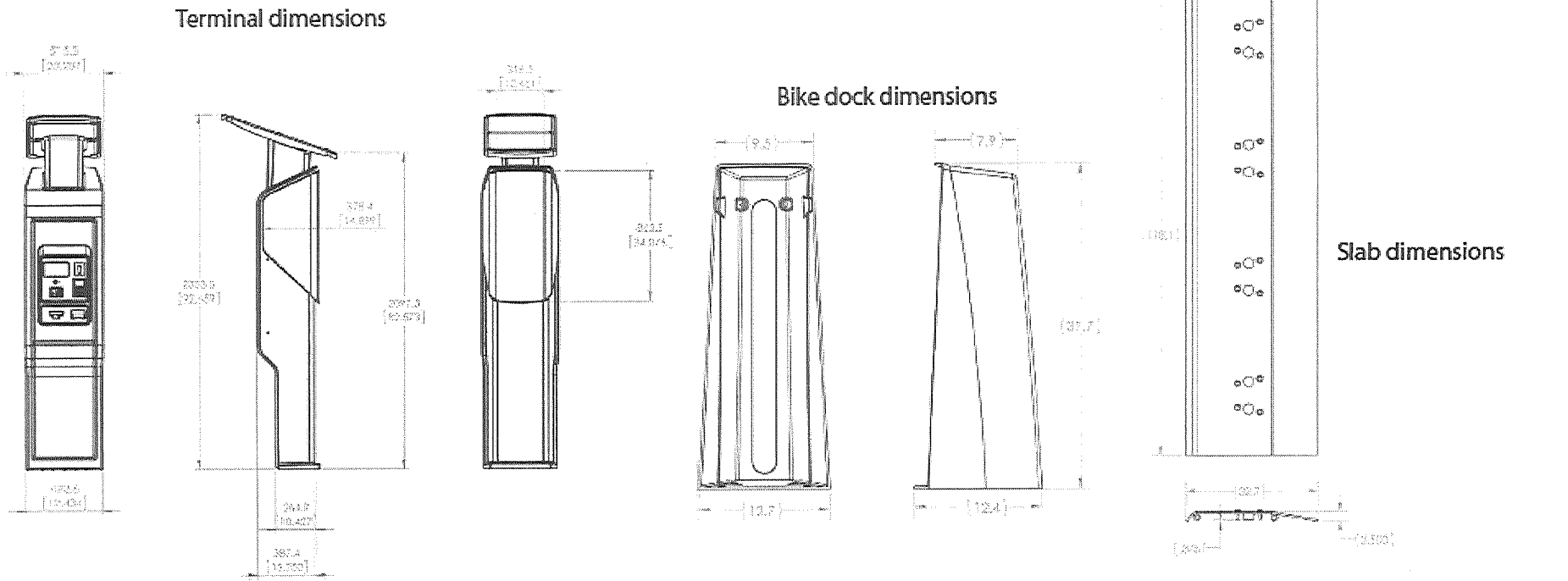
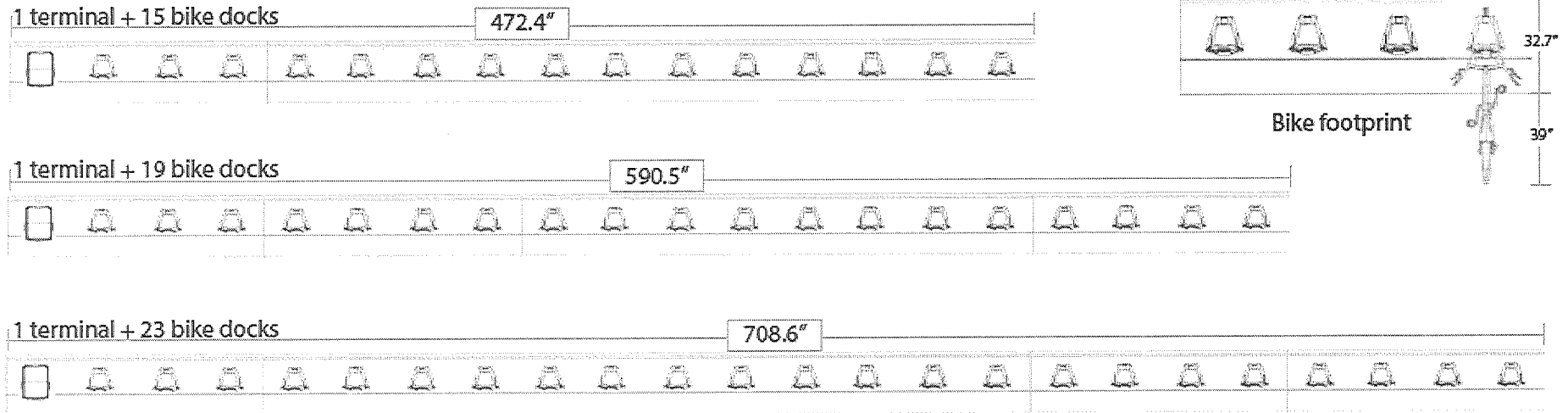
Wider

BLUE BIKES STATION COMPONENTS



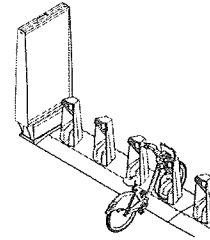
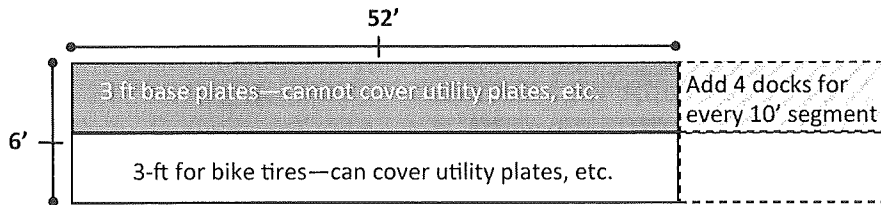
8D Station Dimensions. 19 Dock = Standard City of Boston

Figure A. Dimensions of various bike share components and configurations.



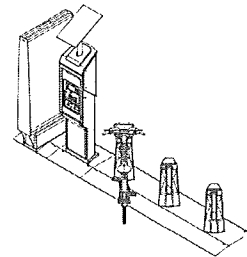
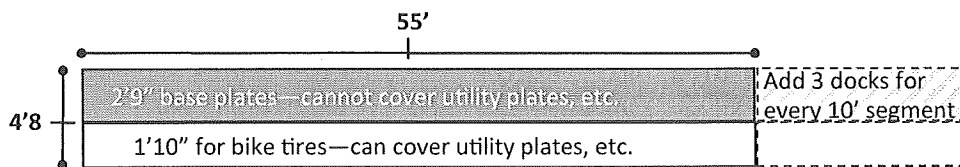
BLUE BIKES STATION FOOTPRINTS

STANDARD 19-DOCK STATION



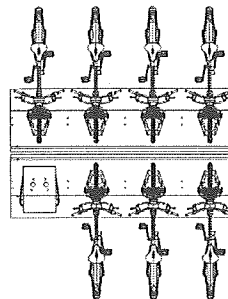
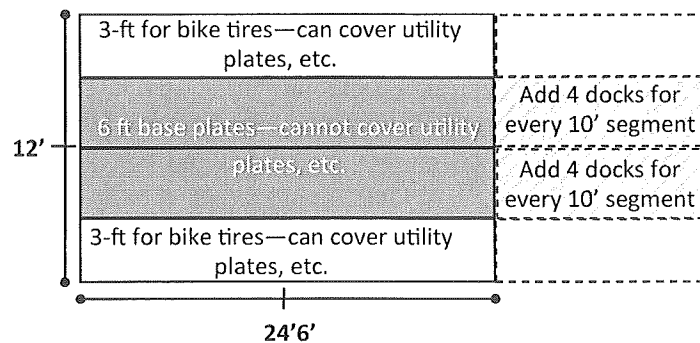
45-DEGREE 15-DOCK STATION

bikes at 45-degree angle to base plate



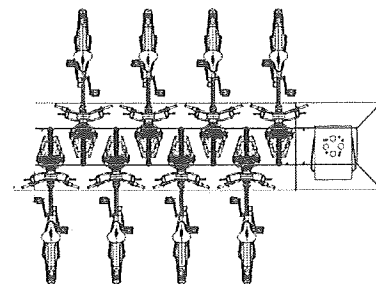
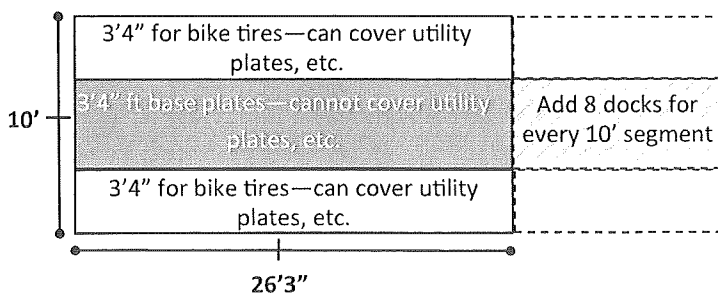
180 PLATE 17-DOCK STATION

two rows of docks with bikes facing each other

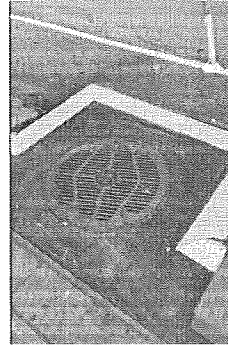
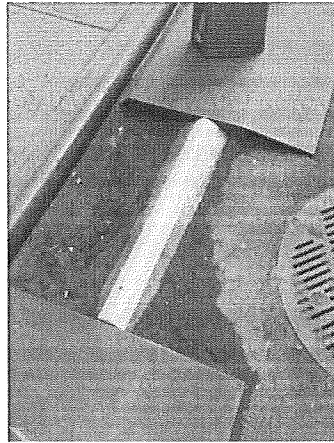
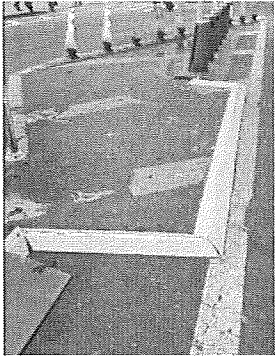


DUAL-RAMP 16-DOCK STATION

two rows of docks on a single base plate with bikes facing each other



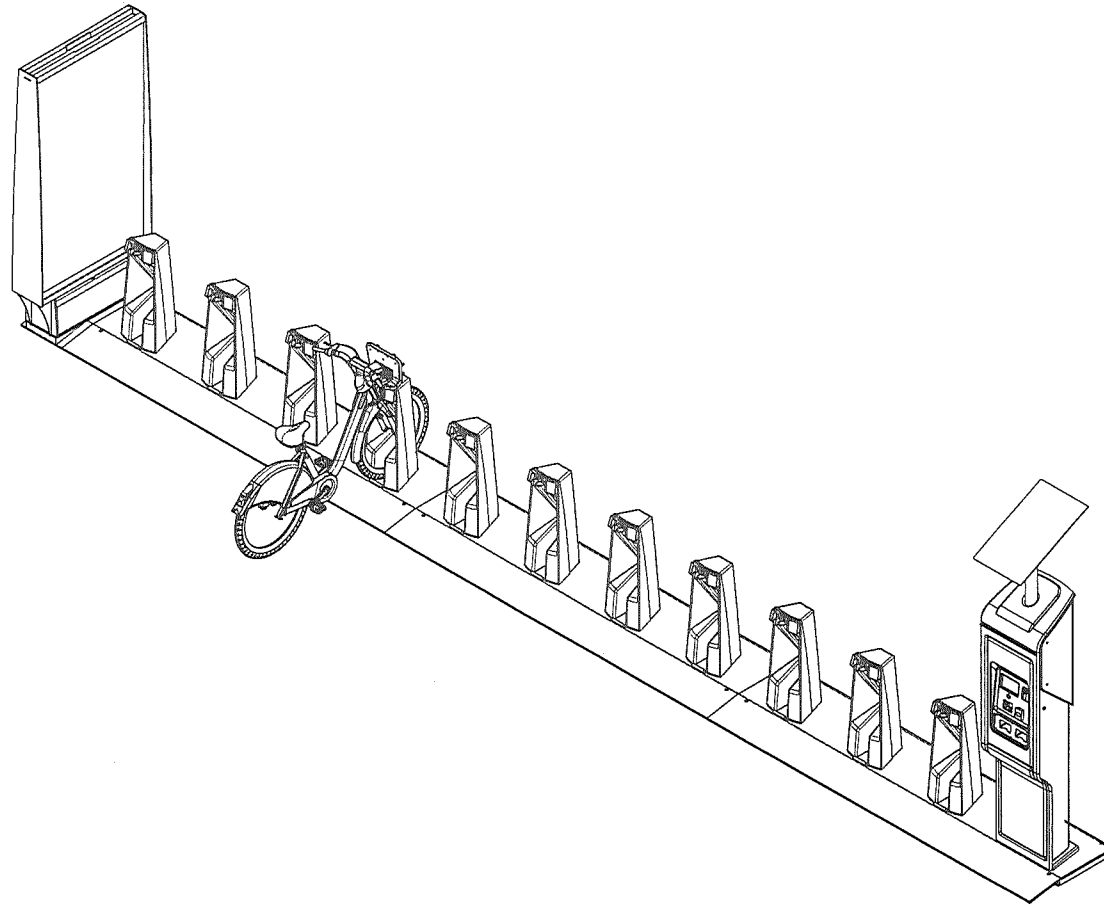
STATION BRIDGING



Cable and housing connects two station segments to get around an obstacle



Bridging at The Eddy at New Street, East Boston



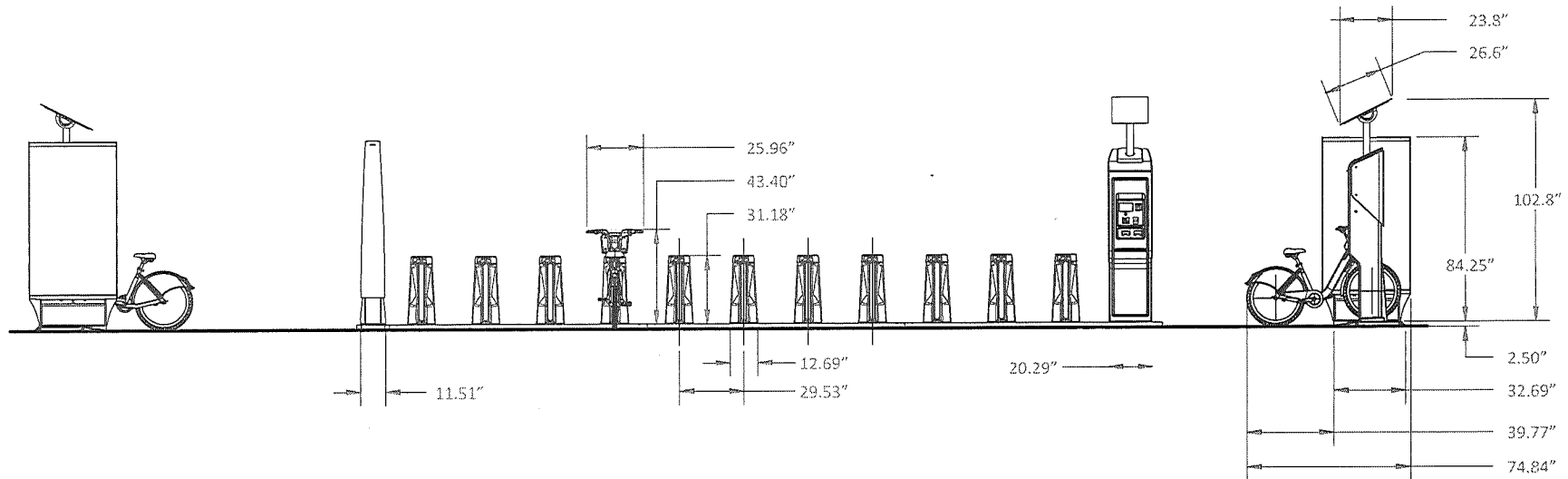
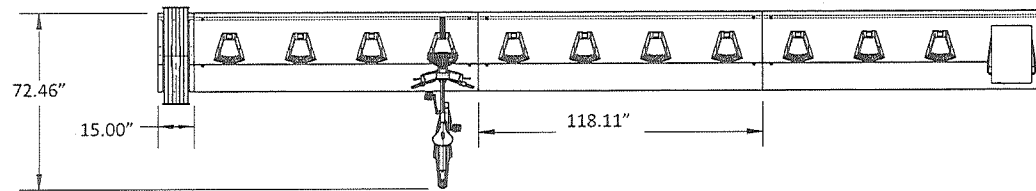
motivate

Project : Bonfire Station Configuration Document

Configuration type : BAR
Station elements: 11 docks + 1 Bonfire Terminal + 1 Ad Panel non Backlit
Views: Isometric Top View

Date : 2018-02-09
Scale: Not to scale
Name: 8DT-13-0102.ai

03



motivate

Project : Bonfire Station Configuration Document

Configuration type : BAR
Station elements: 11 docks + 1 Bonfire Terminal + 1 Ad Panel non-Backlit
Views: Isometric Top View

Date : 2018-02-09
Scale: Not to scale
Name: 8DT-13-0102.ai

02

WASHINGTON ST AT E. BERKELEY ST REVIEW APPROVALS

Location Description:

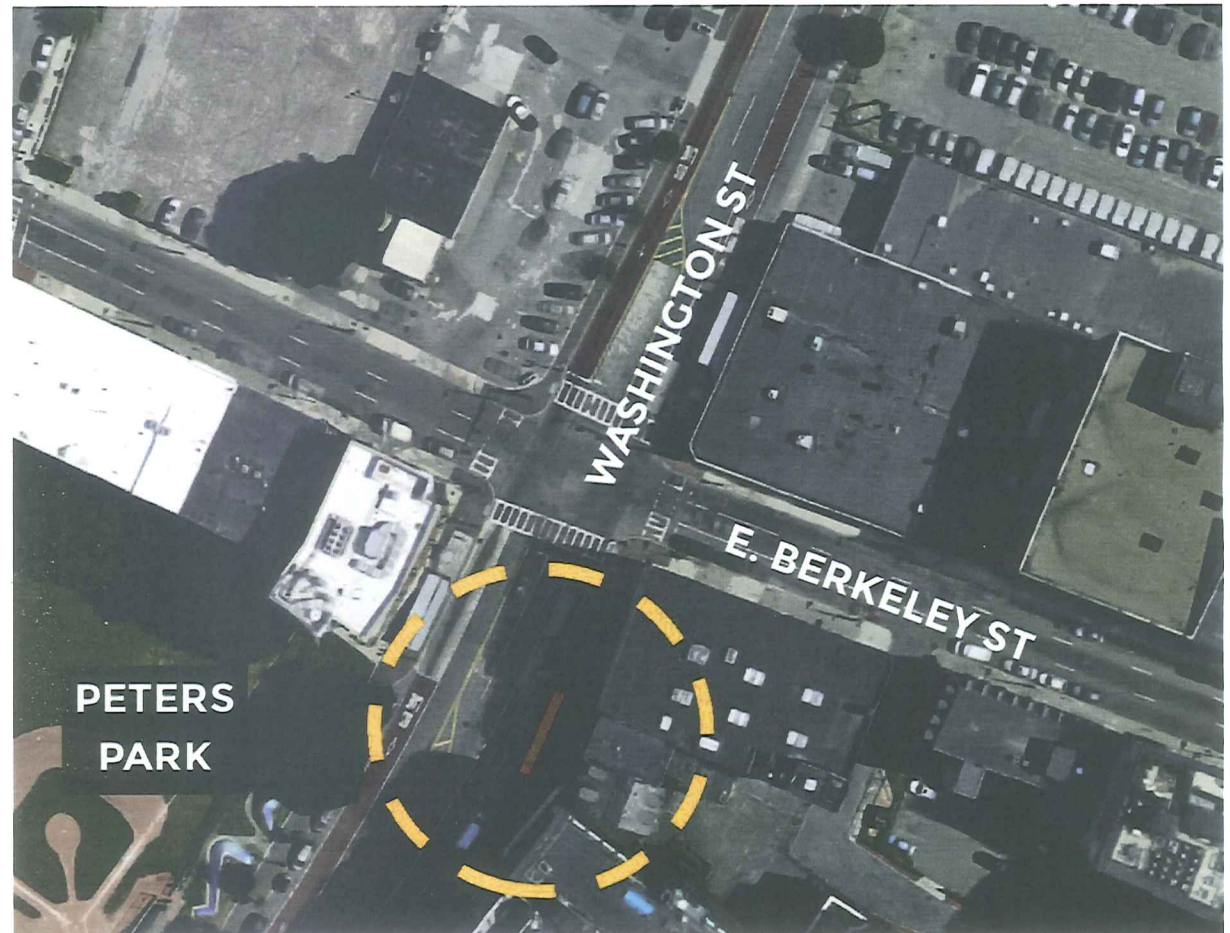
COB sidewalk on Washington Street, just south of intersection with E. Berkeley St. Opposite Peter's Park. South End.

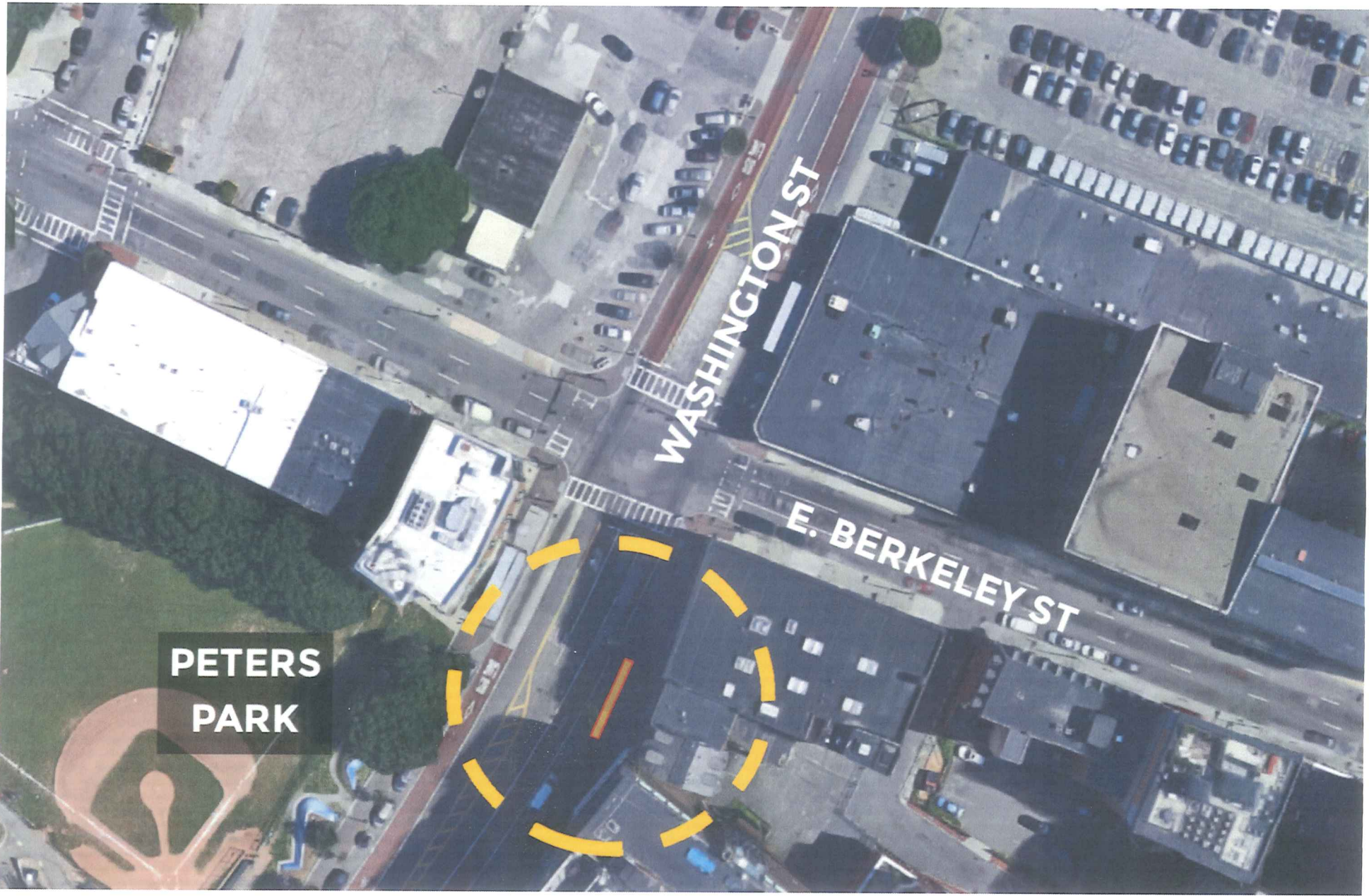
On/Off Street:

Off-street

Dimensions, Dock Number, Components:

- 15 docks
- 42' x 6'
- Kiosk and ad panel/map frame





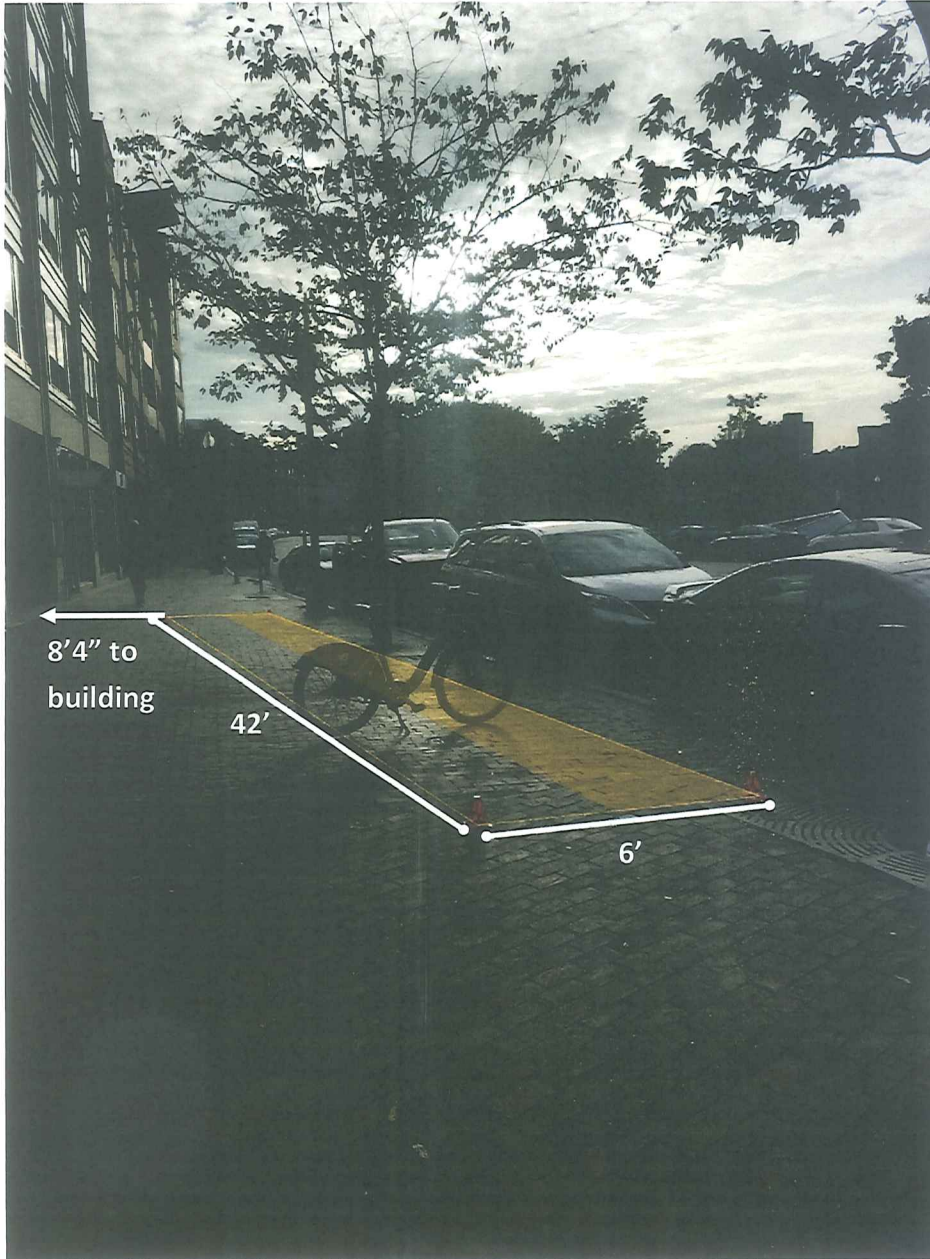
**PETERS
PARK**





WASHINGTON ST AT E. BERKELEY ST

REVIEW APPROVALS



81) TREMONT ST AT W. DEDHAM ST REVIEW APPROVALS

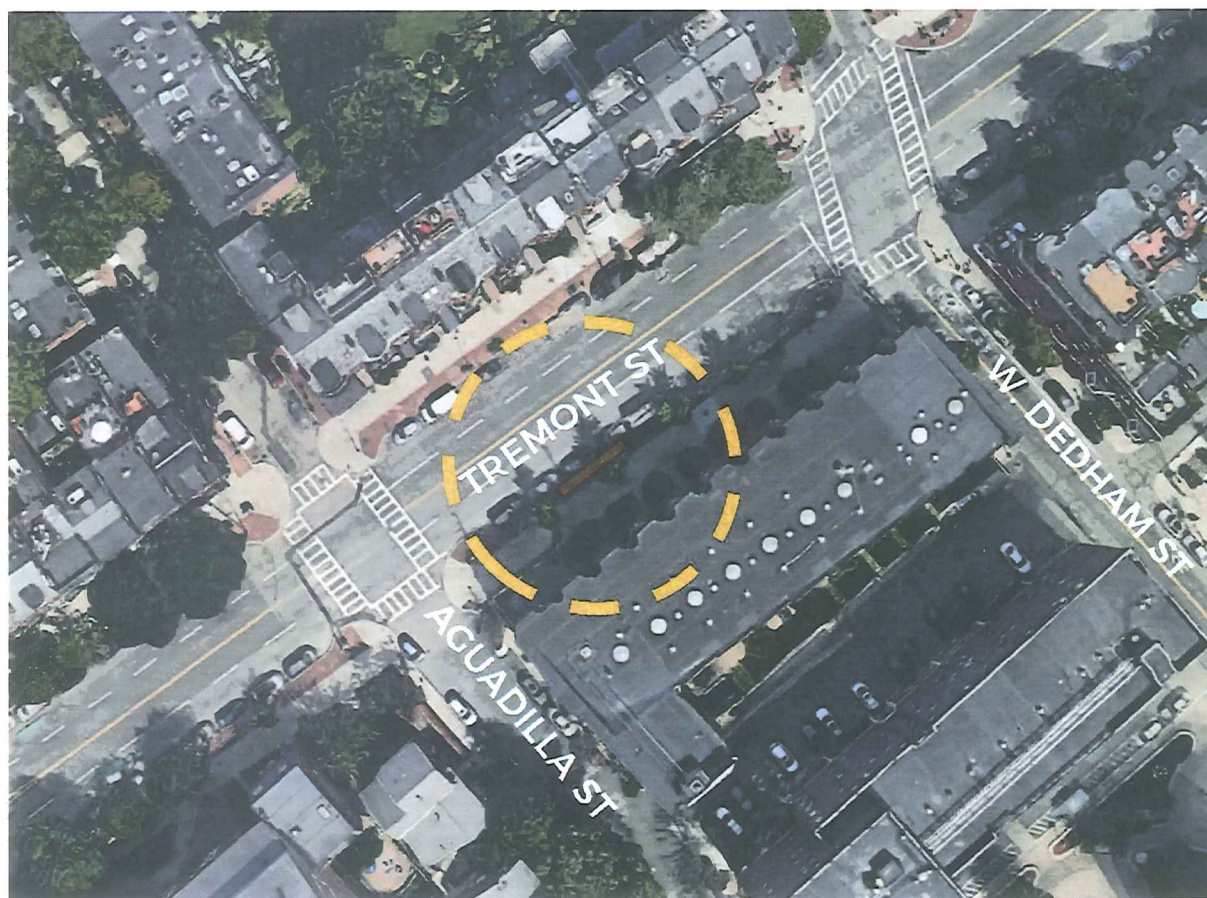
Location Description:

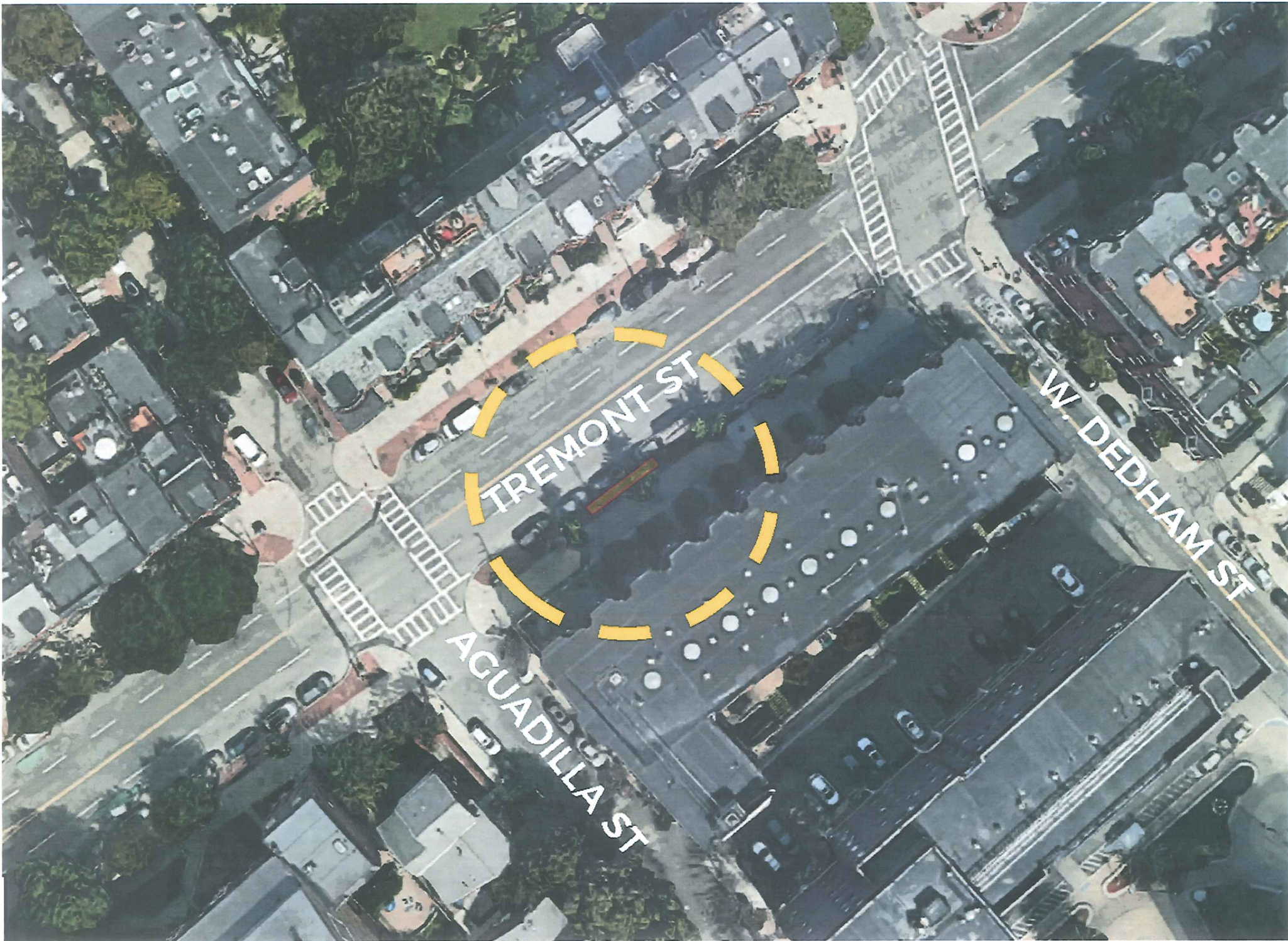
Tremont St, between Aguadilla St and W. Dedham St on COB-owned sidewalk, South End

On/Off Street:
Off-street

Dock Number, Dimensions, Components:

- 19 docks
- 30' x 6' and 22' x 6 segments connected by bridging
- Kiosk and ad panel/map frame





TREMONT ST

AGUADILLA ST

W. DEDHAM ST





81) TREMONT ST AT W. DEDHAM ST REVIEW APPROVALS



75) TREMONT ST AT NORTHAMPTON ST REVIEW APPROVALS

Location Description:

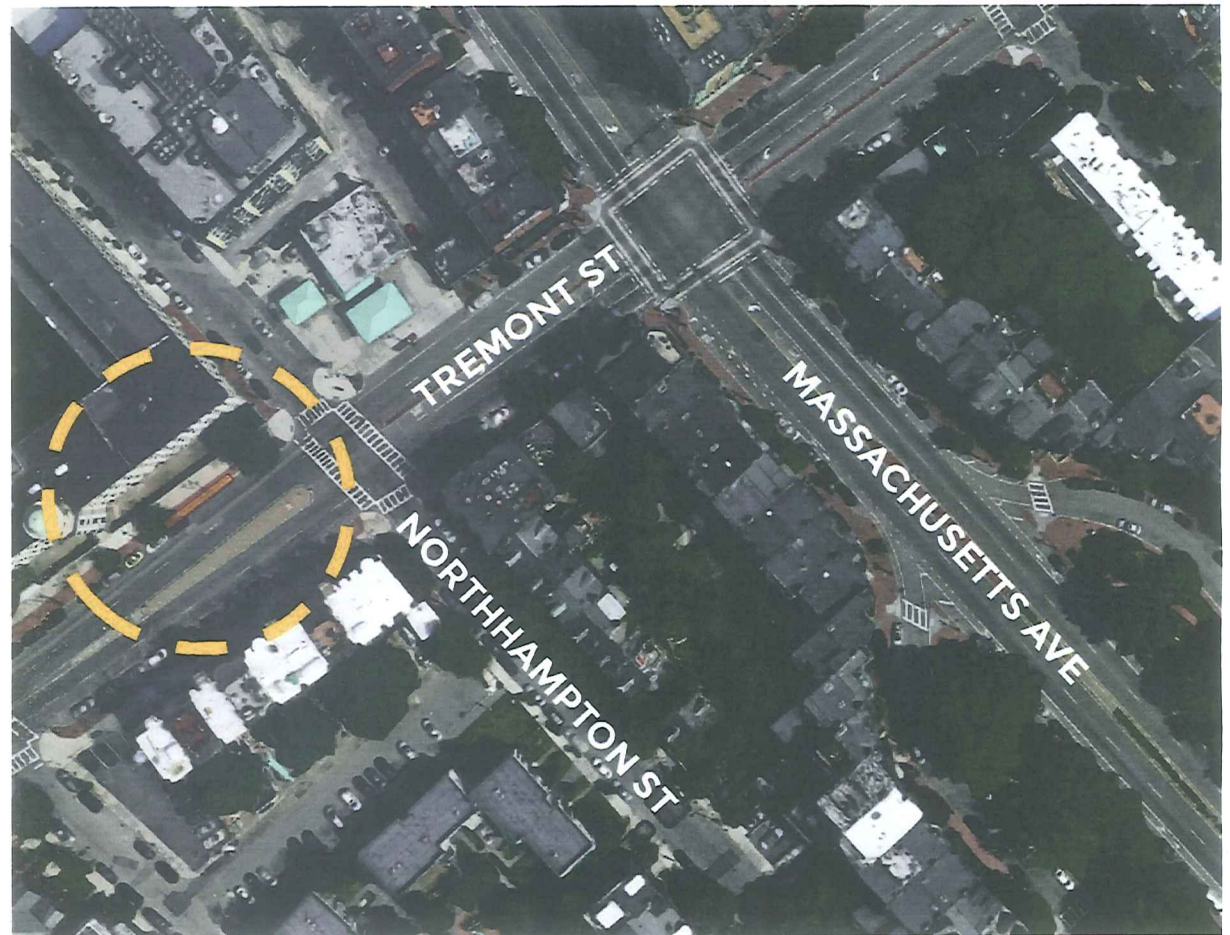
Tremont St, just southwest of Northampton st on COB-owned sidewalk

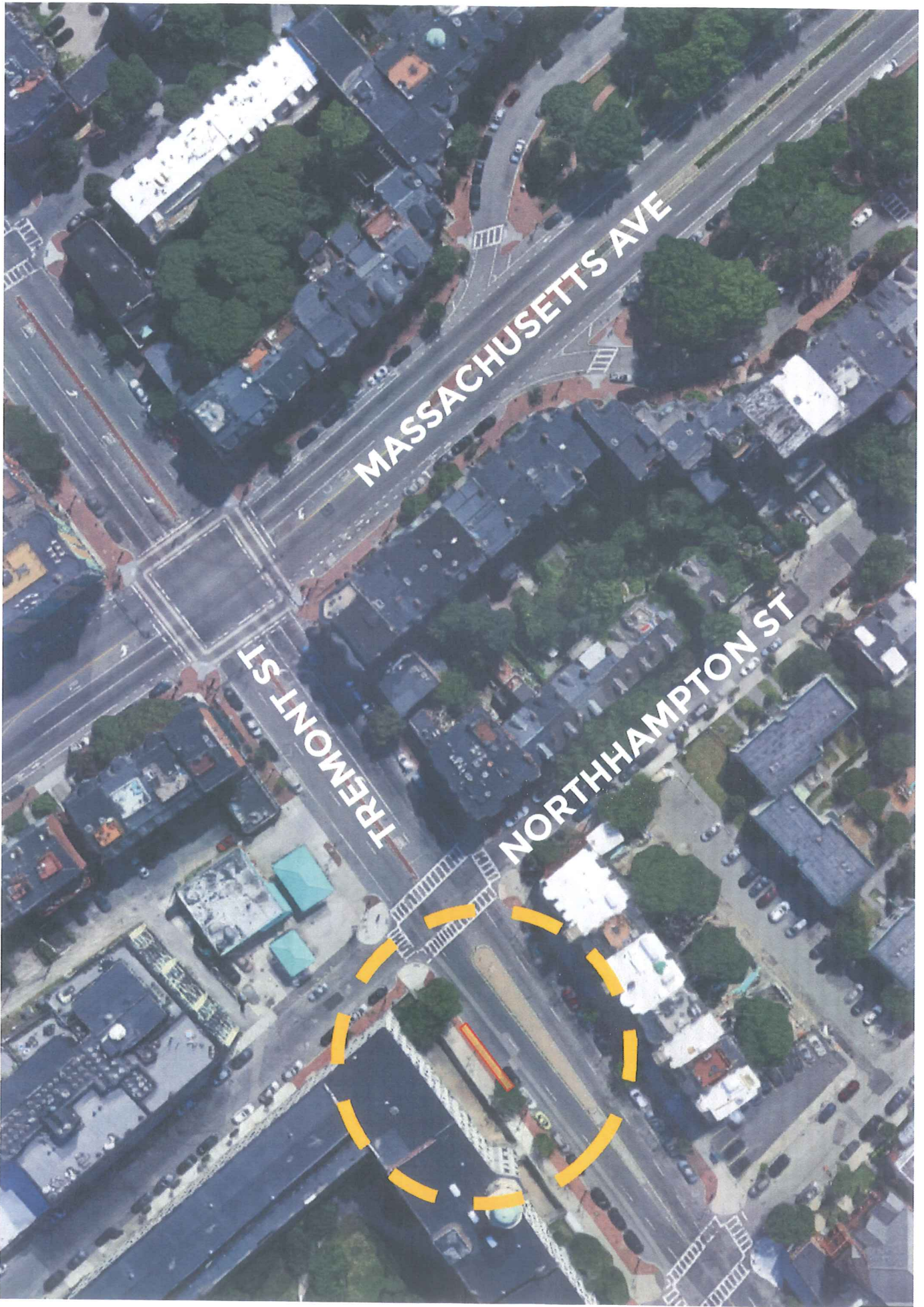
On/Off Street:

Off-street

Dock Number, Dimensions, Components:

- 19 docks
- 32' x 6' and 20' x 6 segments connected by bridging
- Kiosk and ad panel/map frame









75) TREMONT ST AT NORTHAMPTON ST REVIEW APPROVALS



COLUMBUS AVE AT W. CANTON ST REVIEW APPROVALS

Location Description:

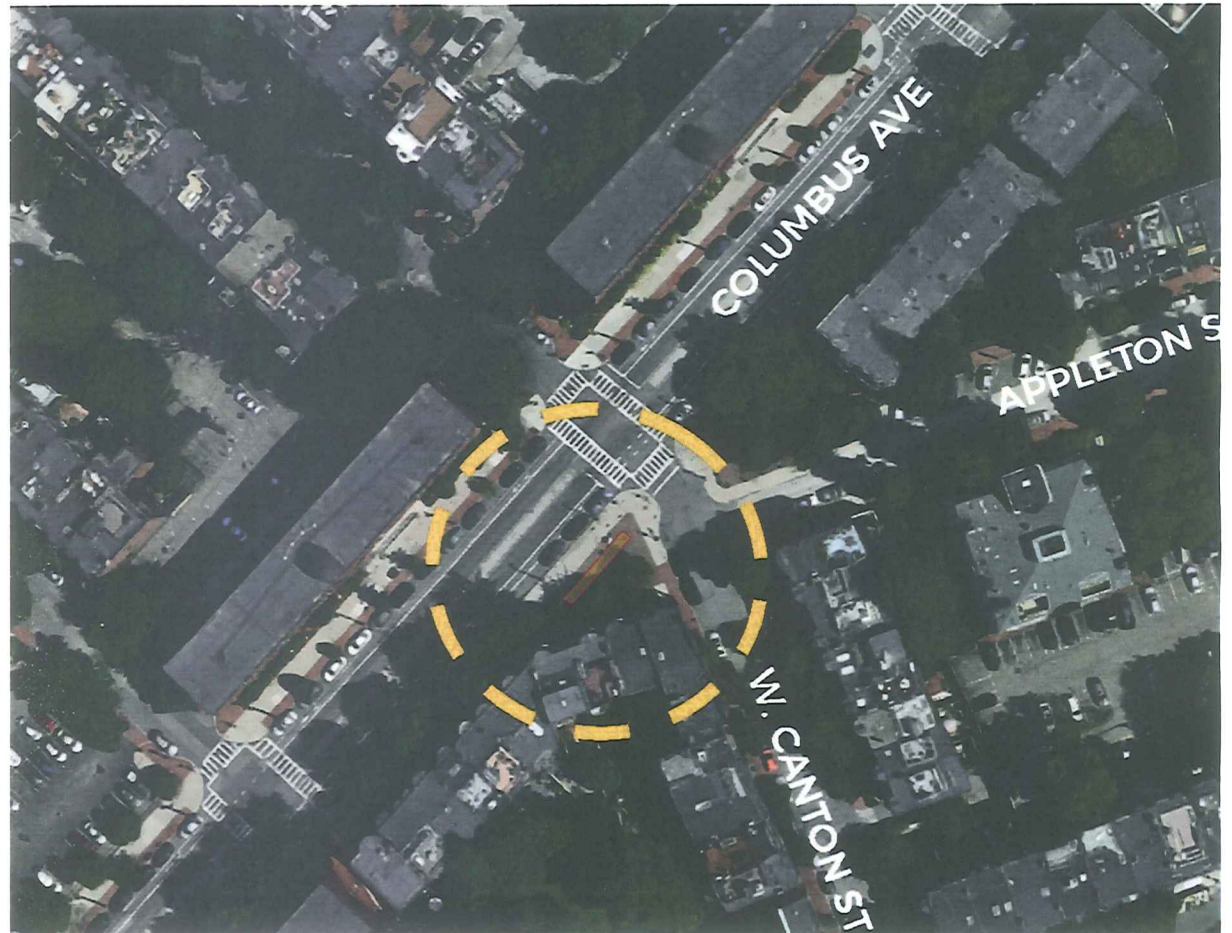
COB plaza adjacent to W. Canton St and Columbus Ave, South End

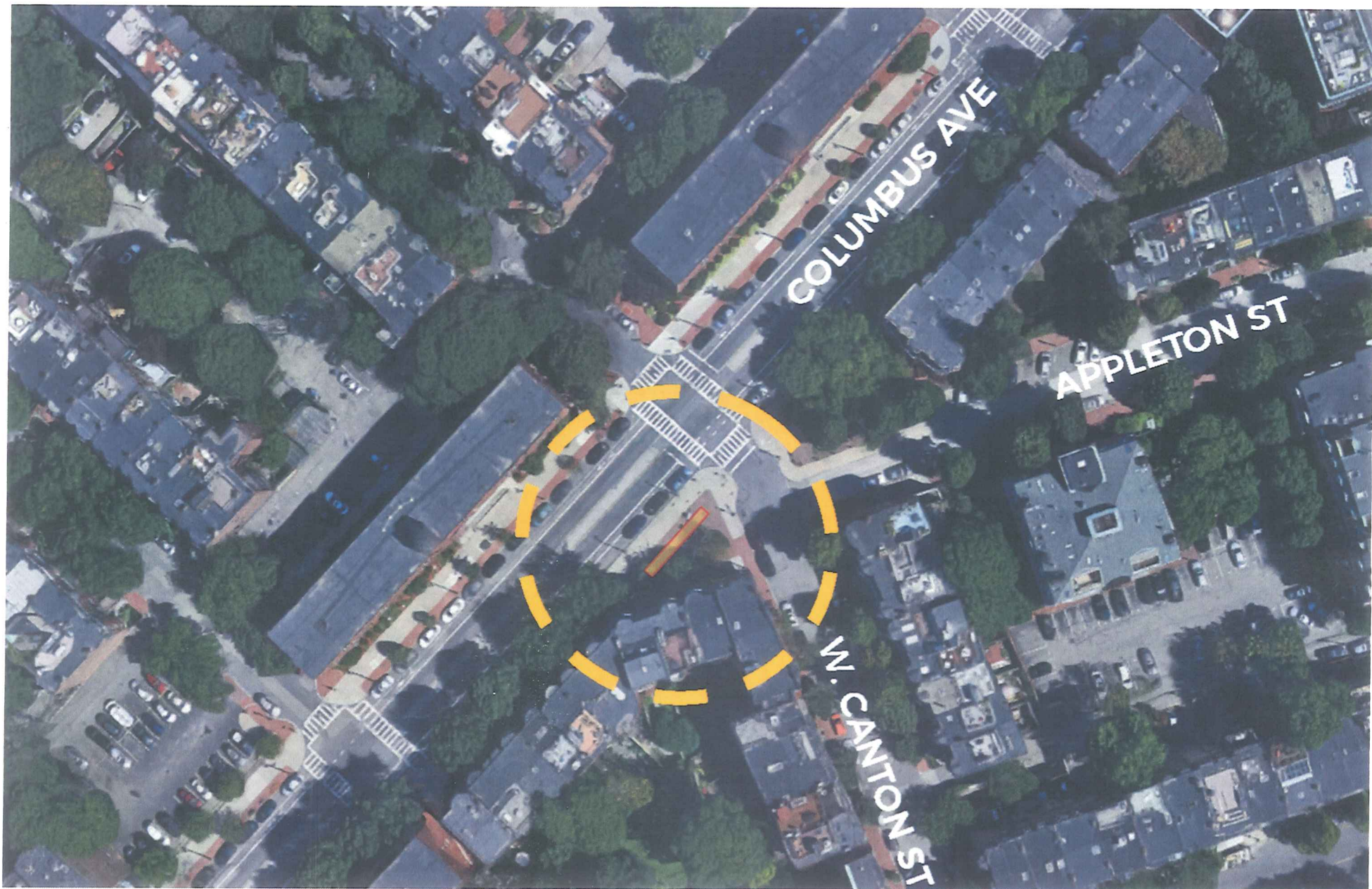
On/Off Street:

Off-street

Dimensions, Dock Number, Components:

- 15 docks
- 42' x 6'
- Kiosk and ad panel/map frame





COLUMBUS AVE

APPLETON ST

W. CANTON ST





COLUMBUS AVE AT W. CANTON ST REVIEW APPROVALS

