

A blue-tinted photograph of a street scene with motion blur, overlaid with white text. The text reads "33 CONGRESS STREET" in a large, bold, sans-serif font, and "SIGNAGE" in a smaller, all-caps, sans-serif font below it.

# 33 CONGRESS STREET

SIGNAGE

**SIGN 1**  
**QUAKER LANE VIEW CORRIDOR**  
Existing Conditions

ORIGINAL BUILDING



CURRENT CONDITION



FUTURE CONDITION



## SIGN 1 QUAKER LANE VIEW CORRIDOR

### Proposed Sign

Plotter cut vinyl applied to glass to give a subtle, yet dynamic identity to the Quaker Lane view corridor. The delicate nature of the logo, combined with the application method makes it feel integrated into the glass and surrounding architecture.



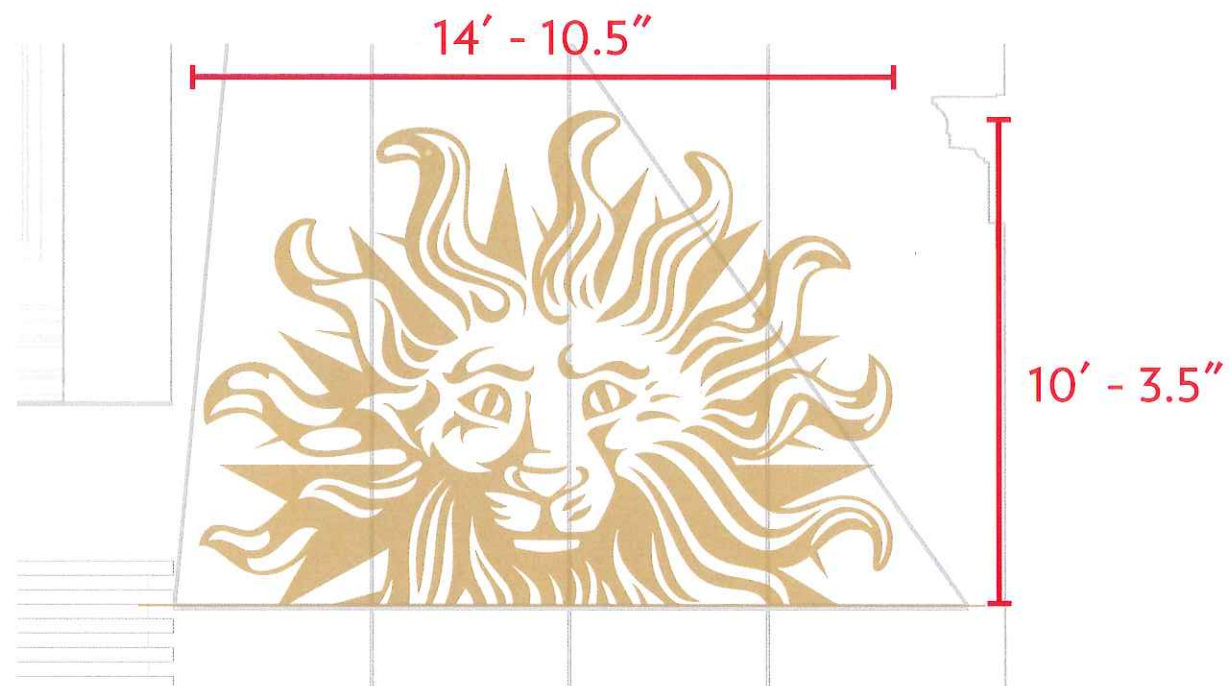
PRECEDENT IMAGE



**SIGN 1**  
**QUAKER LANE VIEW CORRIDOR**

Building Elevation

Plotter cut vinyl applied to angled portion of glass canopy. Shown flat in elevation below.



ENLARGED ELEVATION 1/4" = 1'-0"



QUAKER LANE ELEVATION 1/8" = 1'-0"

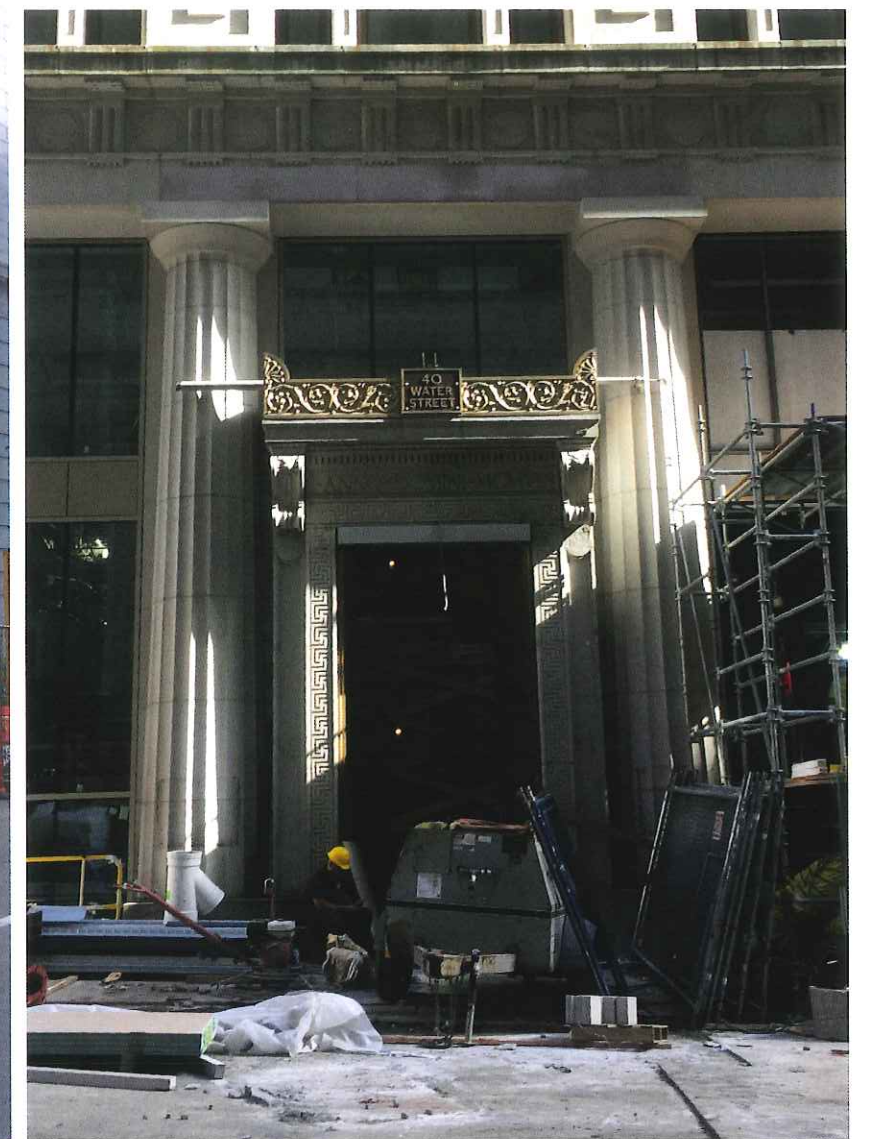
**SIGN 2**  
**40 WATER STREET ENTRANCE**  
Existing Conditions

ORIGINAL BUILDING



**SIGN 2**  
**40 WATER STREET ENTRANCE**  
Existing Conditions

CURRENT CONDITION

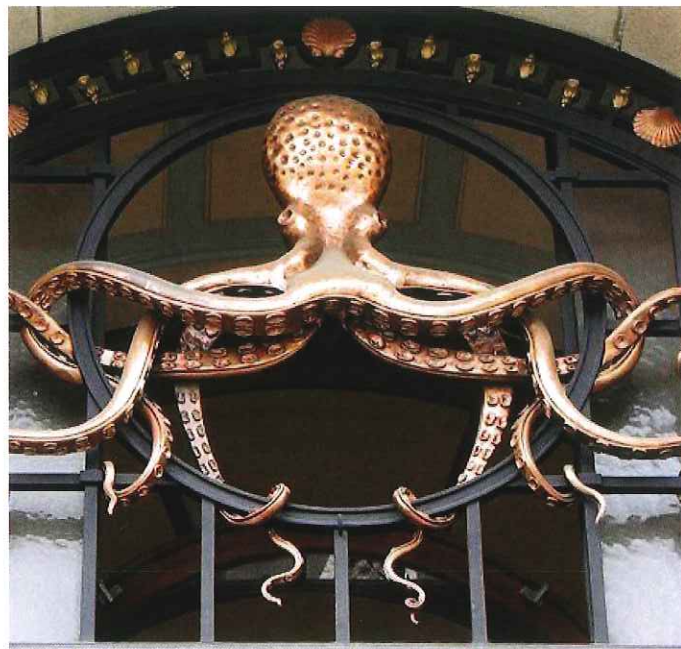


## SIGN 2

### 40 WATER STREET ENTRANCE

Proposed Sign

Dimensional fabricated lion mounted to building above door. Material finish to match existing architectural details to integrate into the facade, making it feel more like a piece of the architecture than a sign.



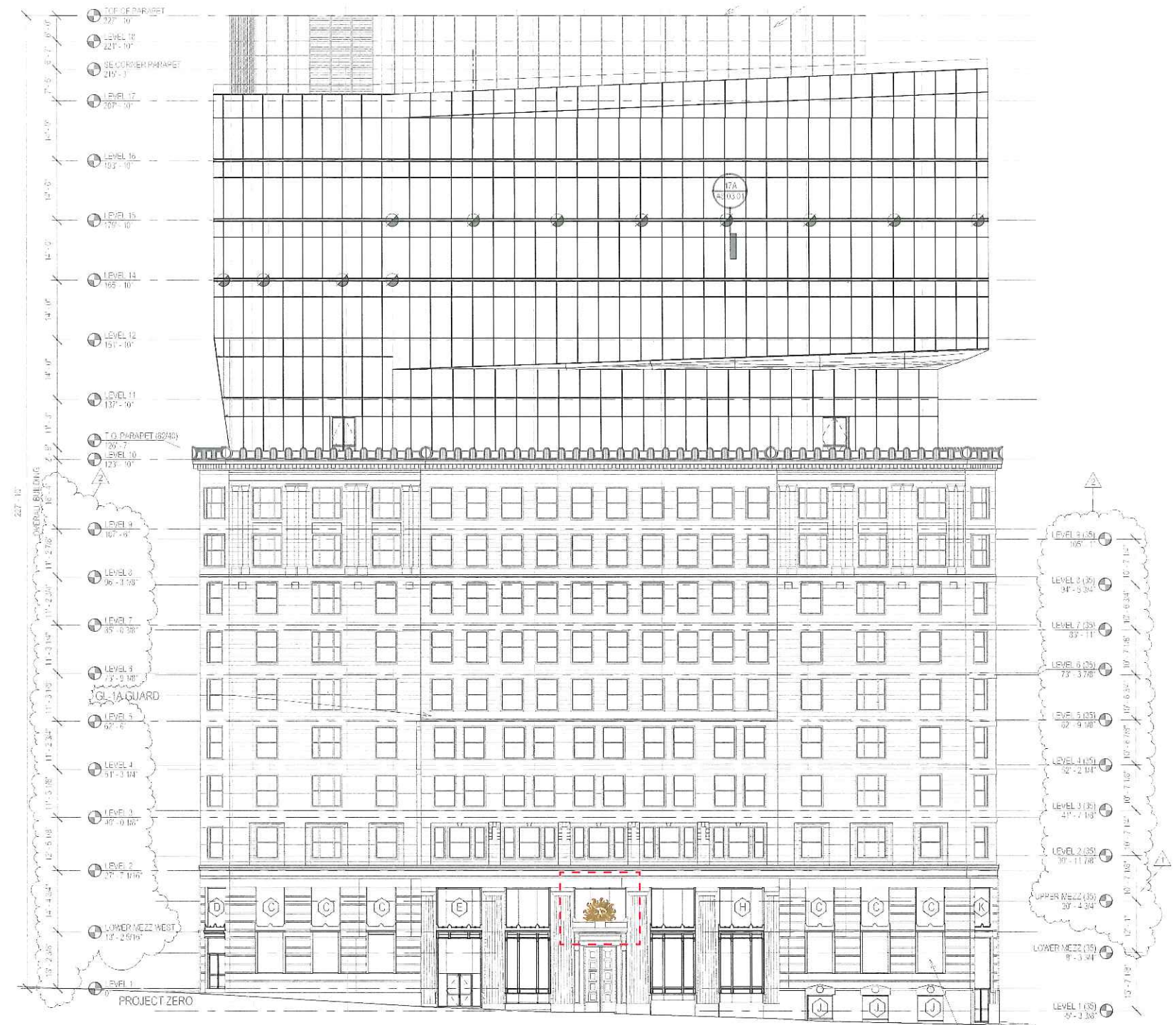
PRECEDENT IMAGE



## SIGN 2 40 WATER STREET ENTRANCE

### Elevation

Logo will have a 1" backer plate for structural stability painted a neutral color to disappear against the background. 5" of sign foam will be added to the backer plate and sculpted into the lion form. The foam will be finished to coordinate with the existing bronze detailing above the door.



SOUTH ELEVATION - WATER STREET 1/32" = 1'-0"

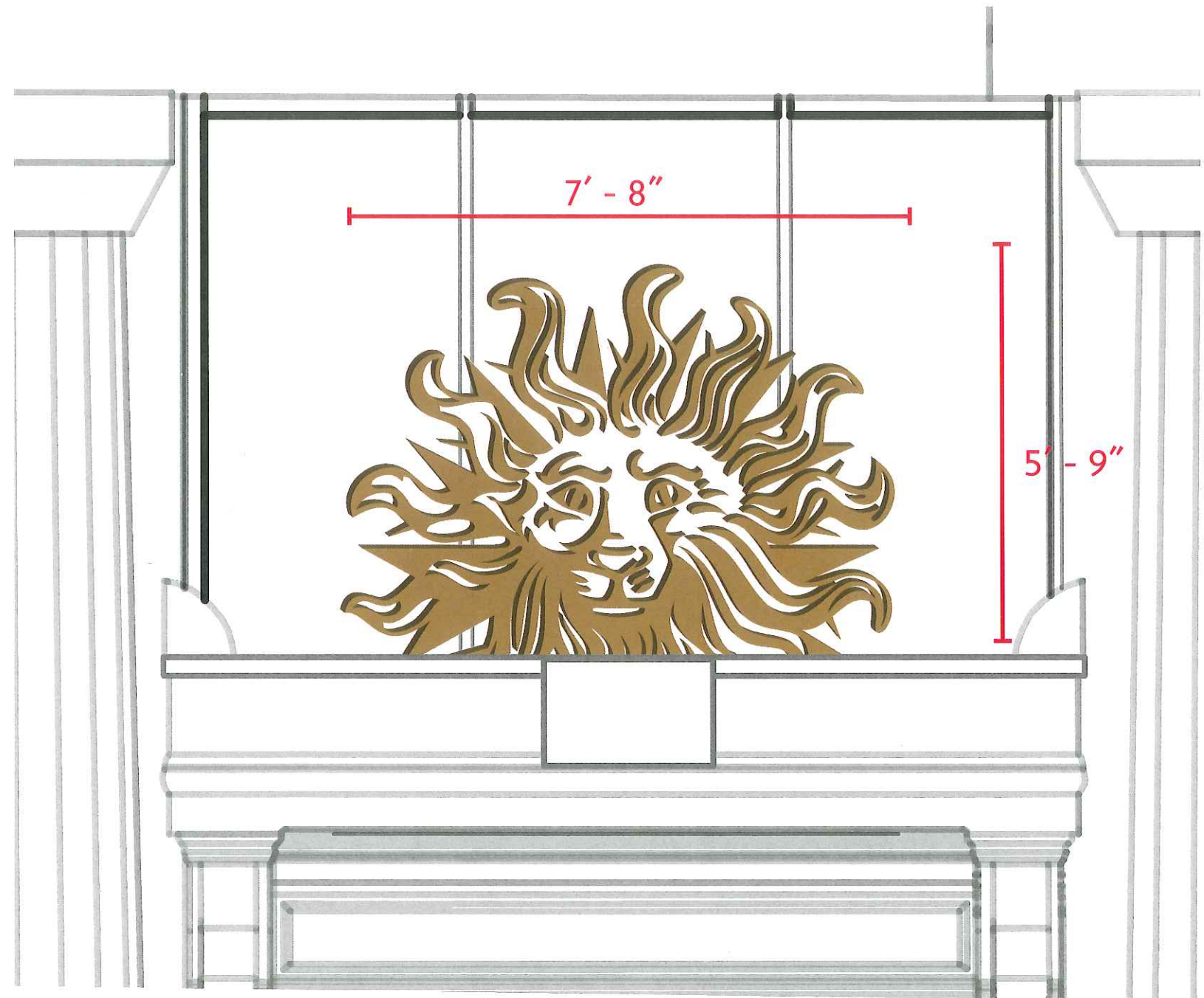


## SIGN 2

### 40 WATER STREET ENTRANCE

#### Enlarged Elevation

Logo will have a 1" backer plate for structural stability painted a neutral color to disappear against the background. 5" of sign foam will be added to the backer plate and sculpted into the lion form. The foam will be finished to coordinate with the existing bronze detailing above the door.



ENLARGED ELEVATION - 1/2" = 1'-0"