

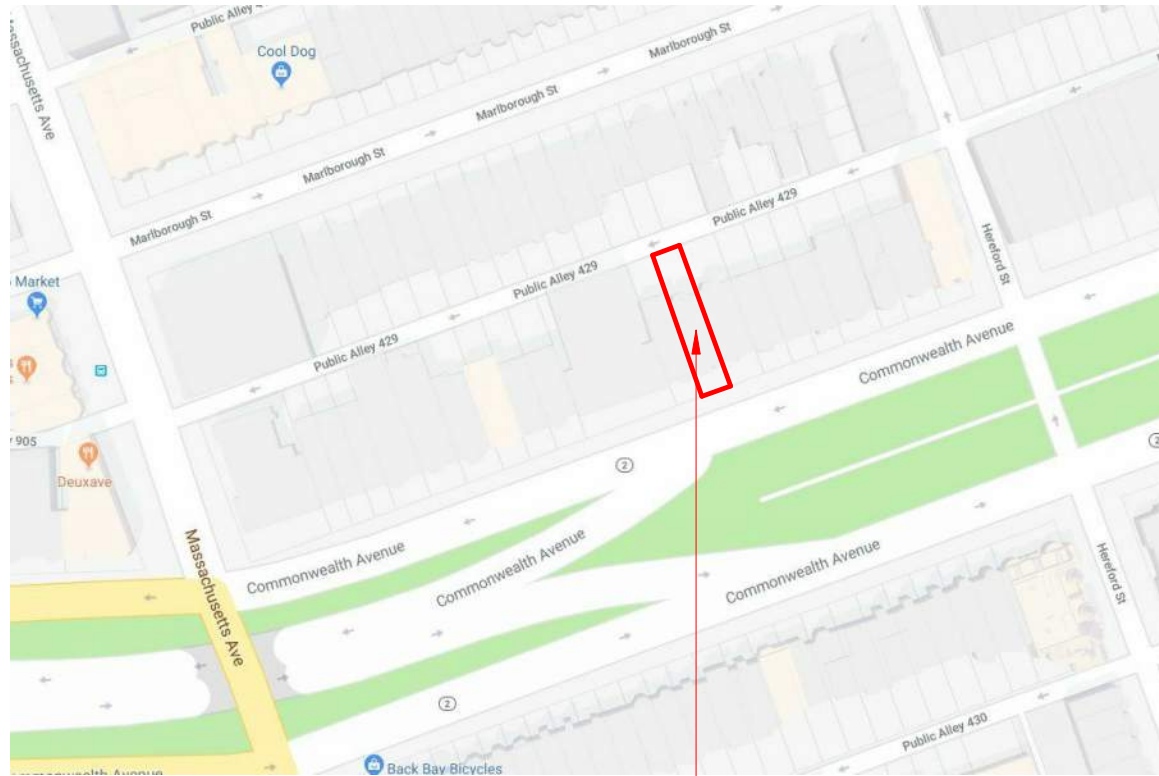
327 COMMONWEALTH AVE

BOSTON, MA 02115

BACK BAY ARCHITECTURAL COMMISSION

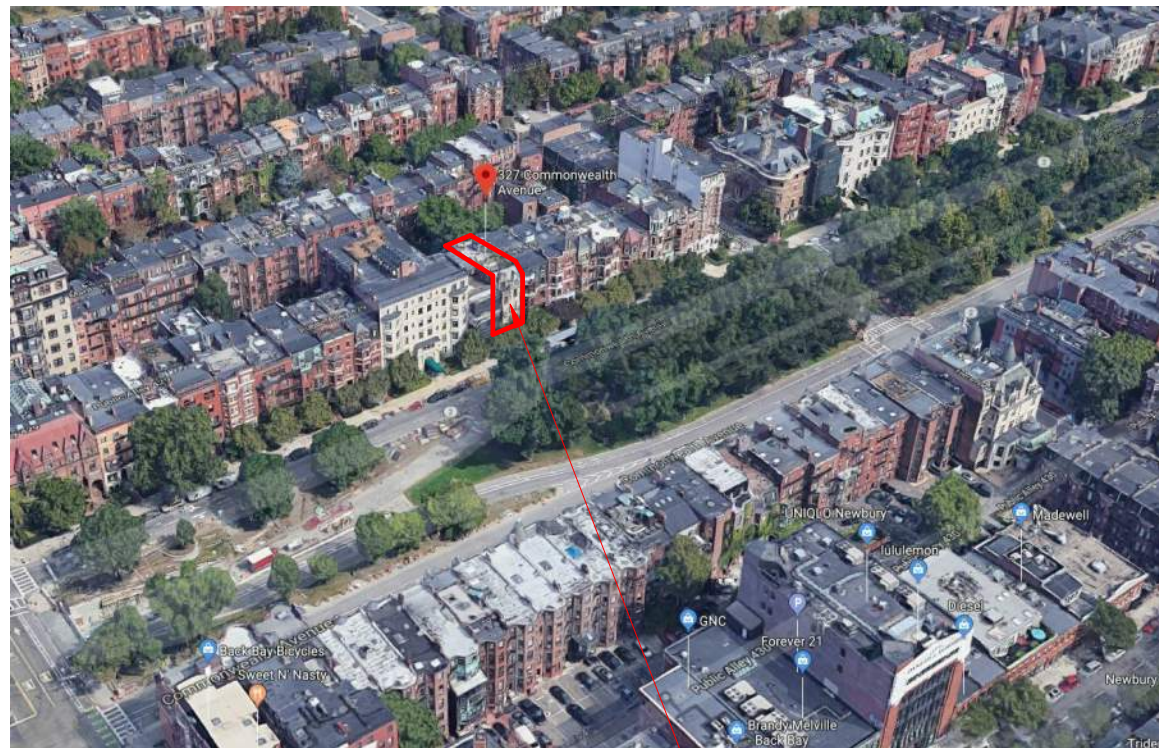


EMBARC



AERIAL

327 COMMONWEALTH AVE



BIRD'S EYE

327 COMMONWEALTH AVE



AERIAL - NEIGHBORING ROOF CONTEXT



COMMONWEALTH AVE LOOKING EAST



327 COMMONWEALTH AVE



COMMONWEALTH AVE LOOKING WEST

327 COMMONWEALTH AVE

327 COMMONWEALTH AVE

327 COMMONWEALTH AVE



PUBLIC ALLEY 429 LOOKING EAST

327 COMMONWEALTH AVE



327 COMMONWEALTH AVE - REAR(ALLEY) ELEVATION

327 COMMONWEALTH AVE



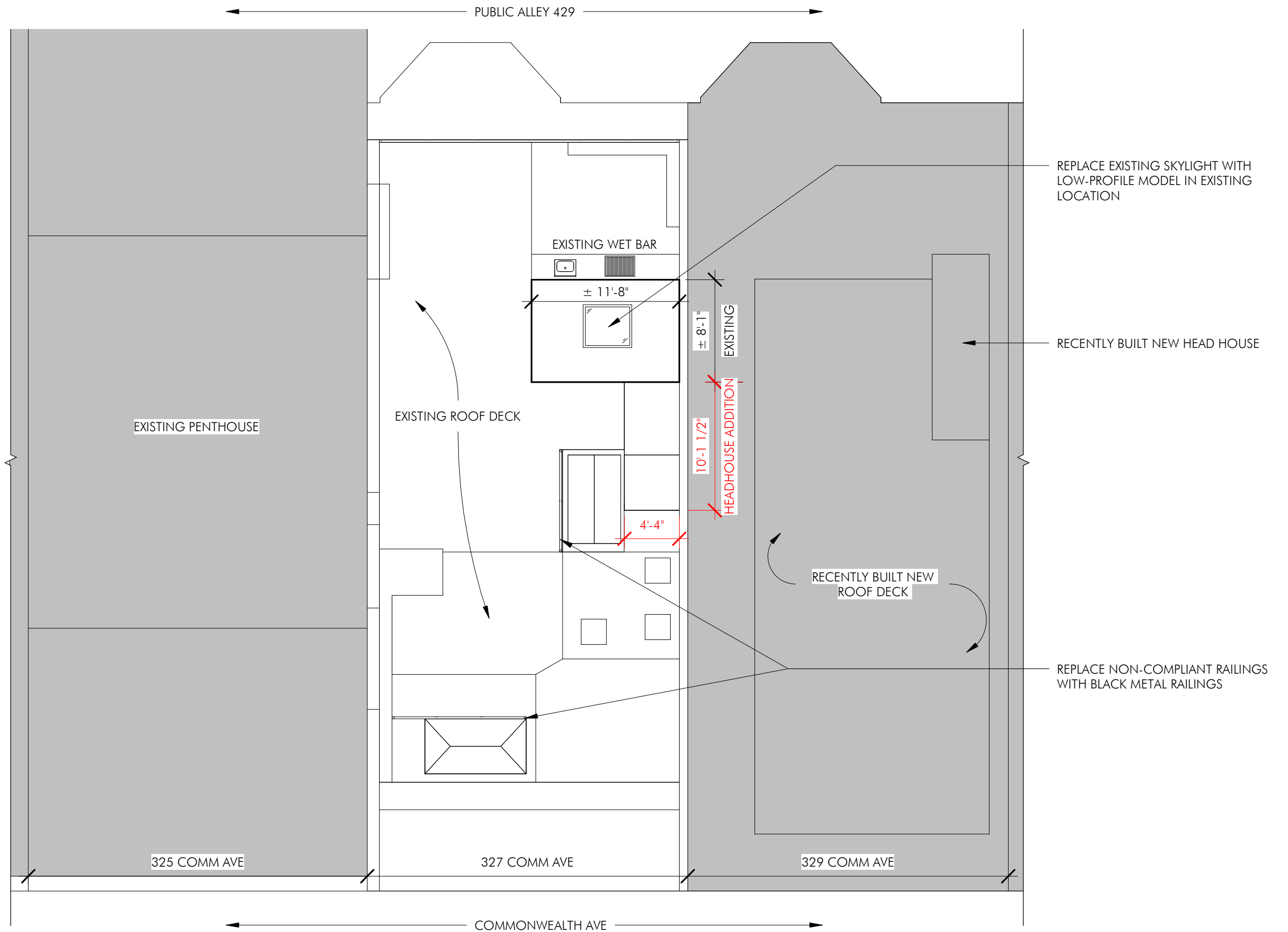
PUBLIC ALLEY 429 LOOKING WEST



EXISTING ROOF DECK FACING TOWARDS COMM AVE
327 COMMONWEALTH AVE

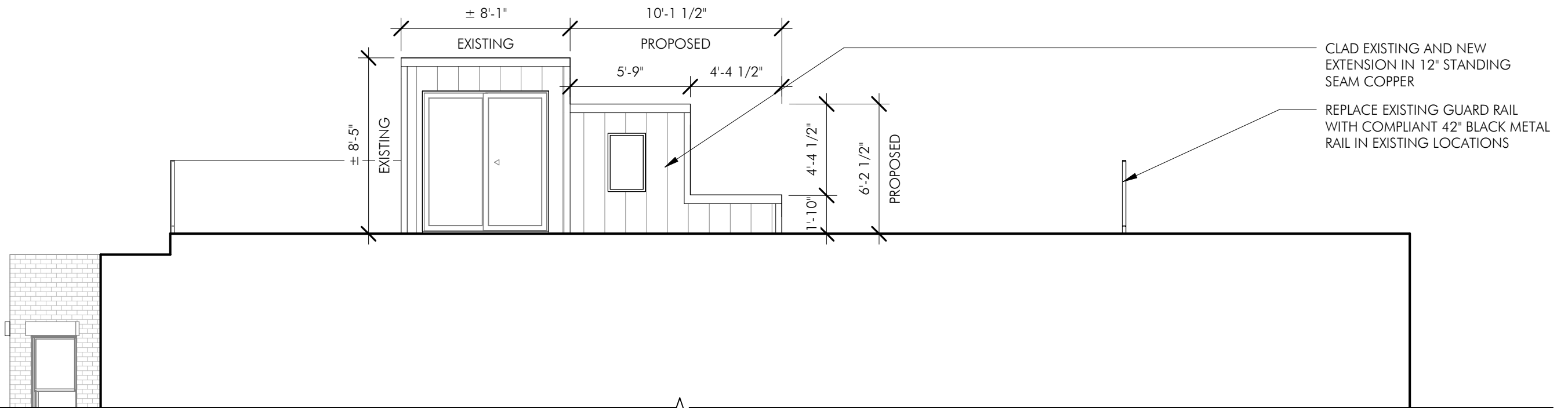


EXISTING HEAD HOUSE - 327 COMMONWEALTH AVE
NEW HEAD HOUSE AND ROOF DECK UNDER CONSTRUCTION - 329 COMMONWEALTH AVE (RIGHT SIDE OF PHOTO)



PUBLIC ALLEY 429

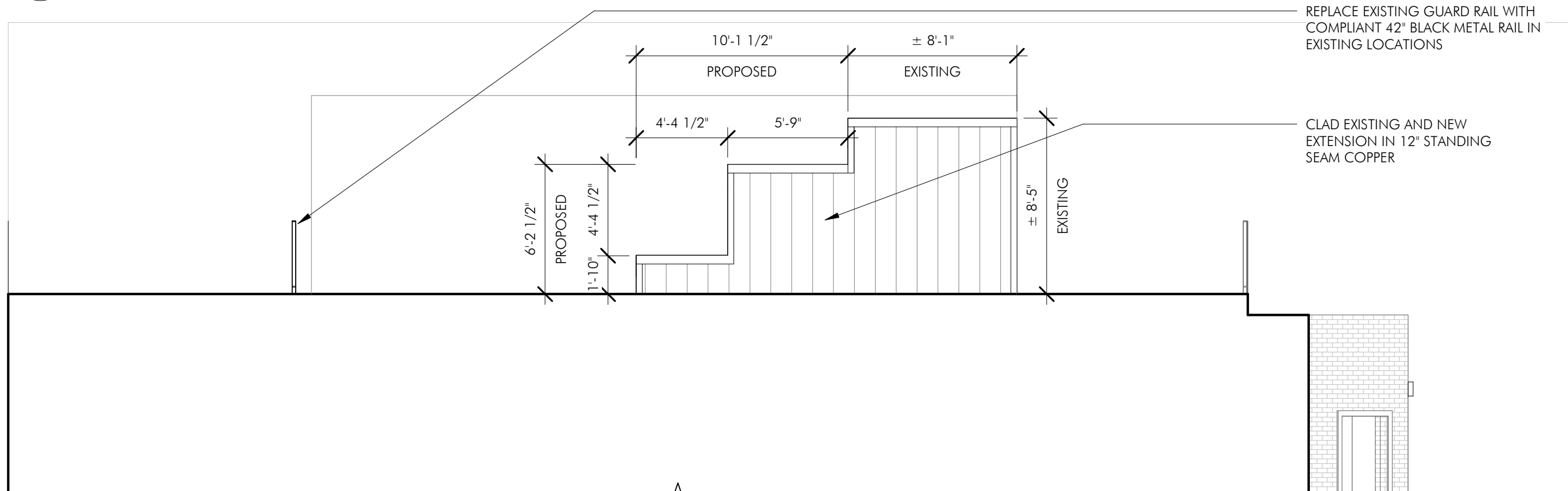
COMMONWEALTH AVE



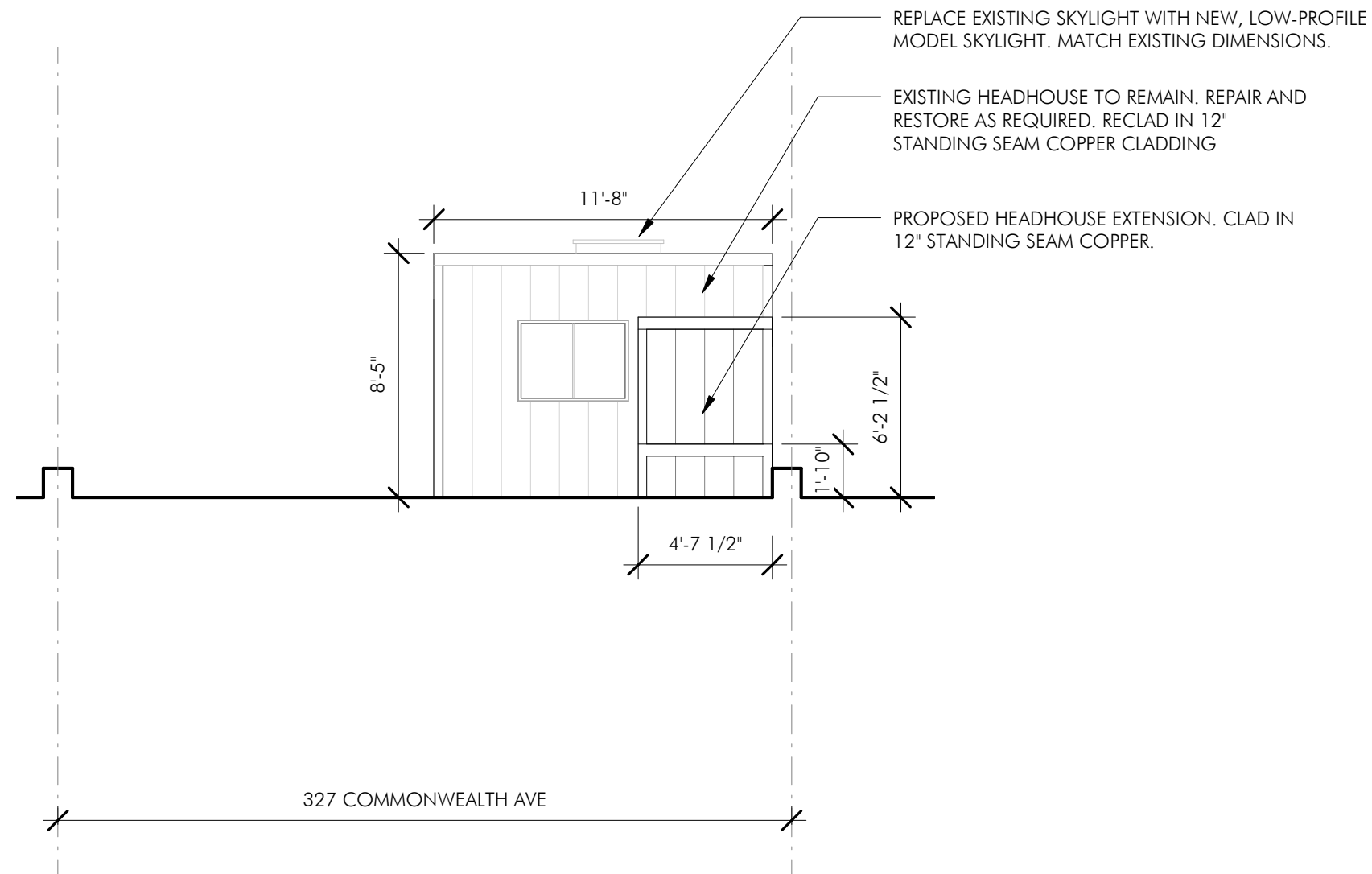
1 WEST FACING HEAD HOUSE ELEVATION
3/16" = 1'-0"

COMMONWEALTH AVE

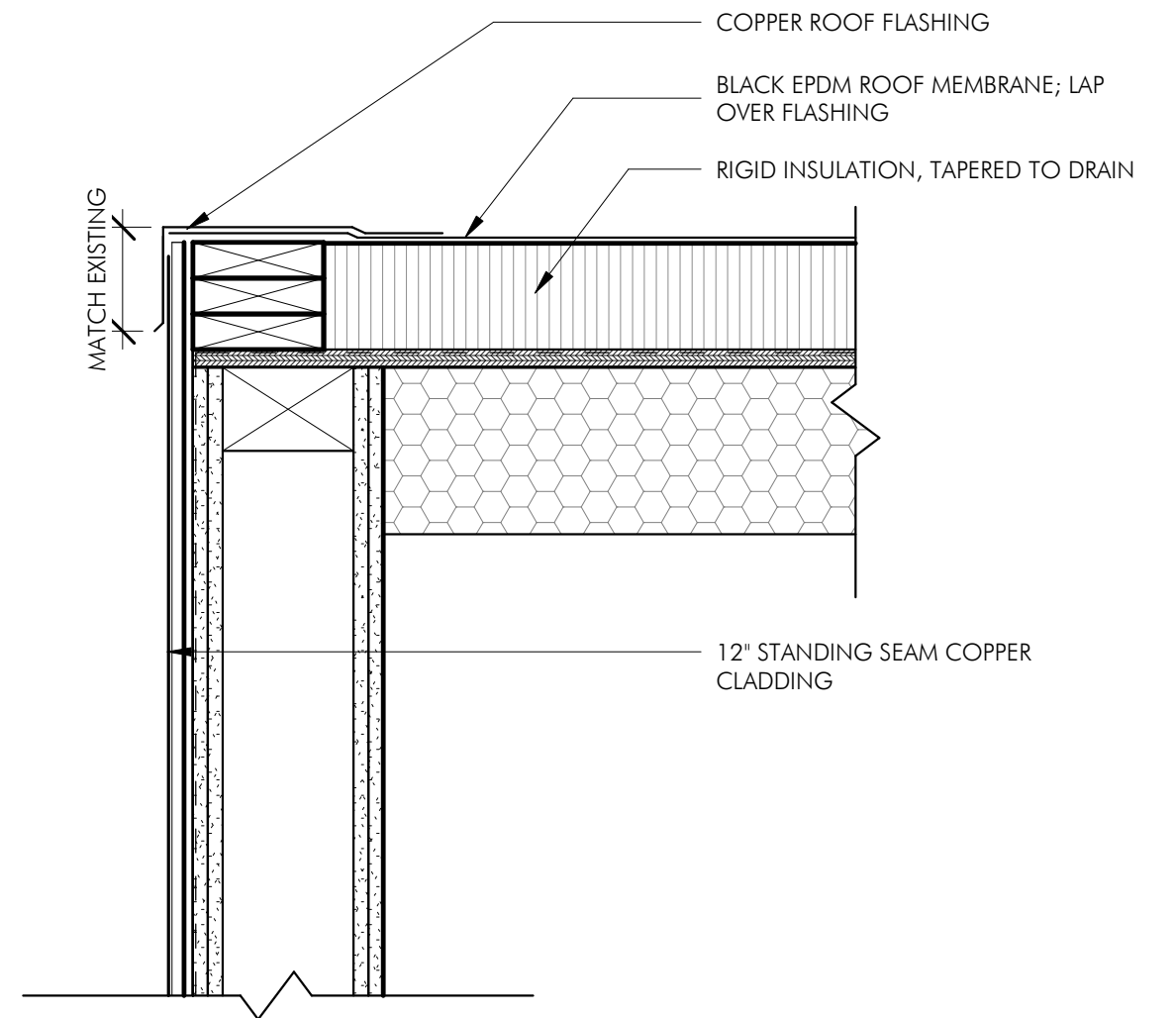
PUBLIC ALLEY 429



2 EAST FACING HEAD HOUSE ELEVATION
3/16" = 1'-0"

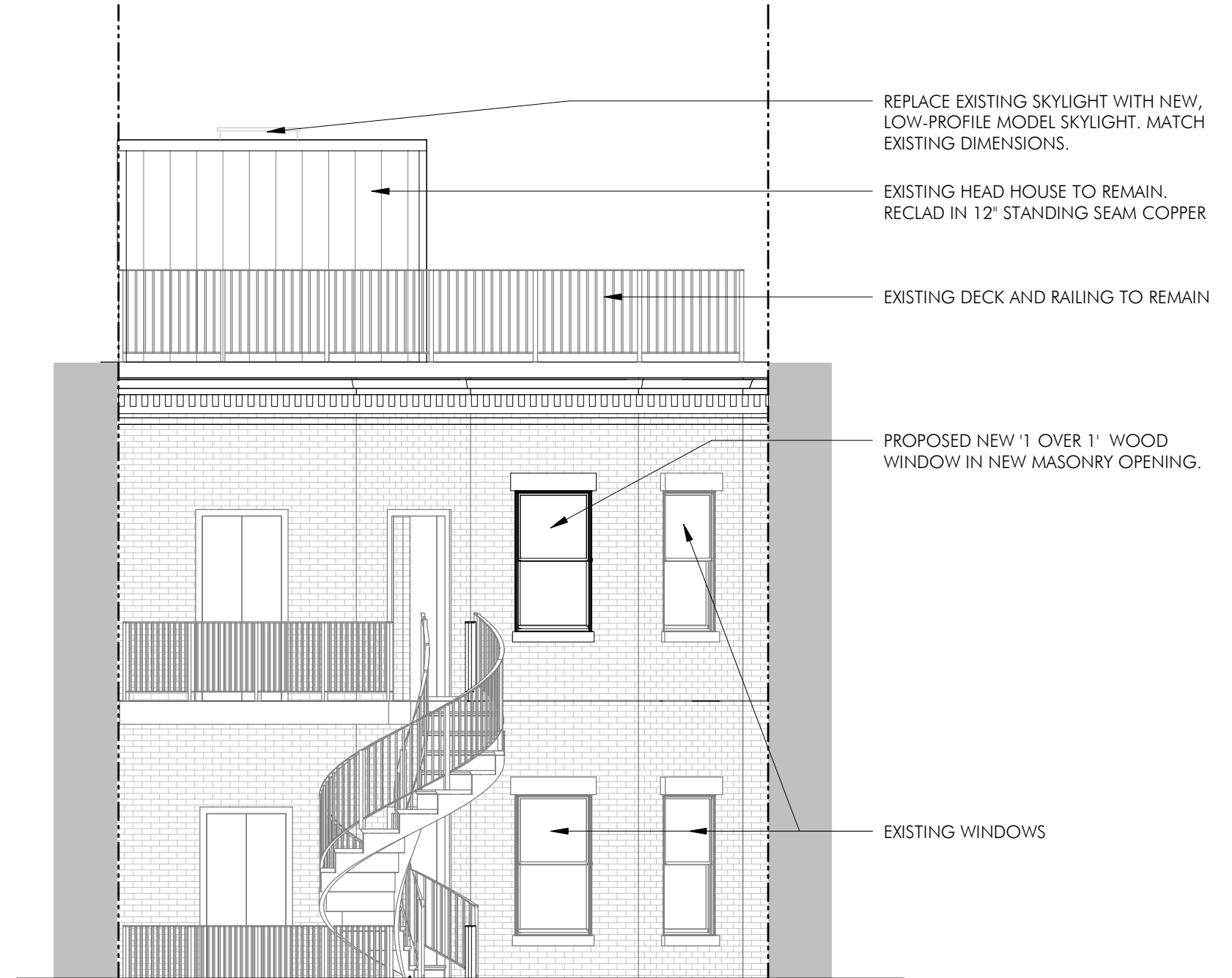


1 EAST FACING (COMMONWEALTH AVE) HEAD HOUSE ELEVATION
 3/16" = 1'-0"



2 HEADHOUSE EXTENSION DETAIL @ ROOF
 1 1/2" = 1'-0"

PROPOSED WINDOW LOCATION



1 PARTIAL REAR (PUBLIC ALLEY 429) ELEVATION
3/16" = 1'-0"





FACE SHIELD
SAFETY GEAR

DEMO BAGS
Heavy Duty
www.demobags.com

