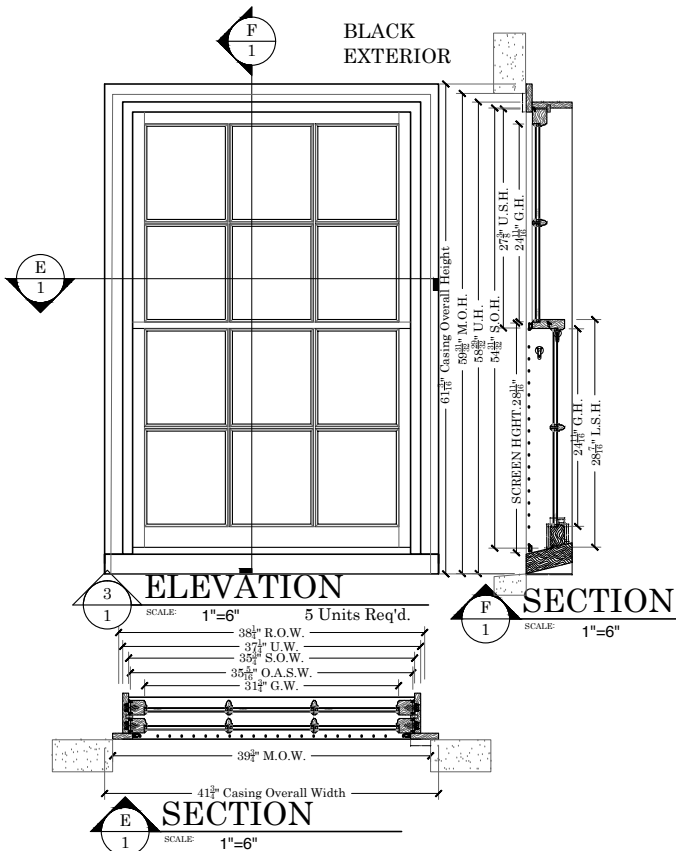
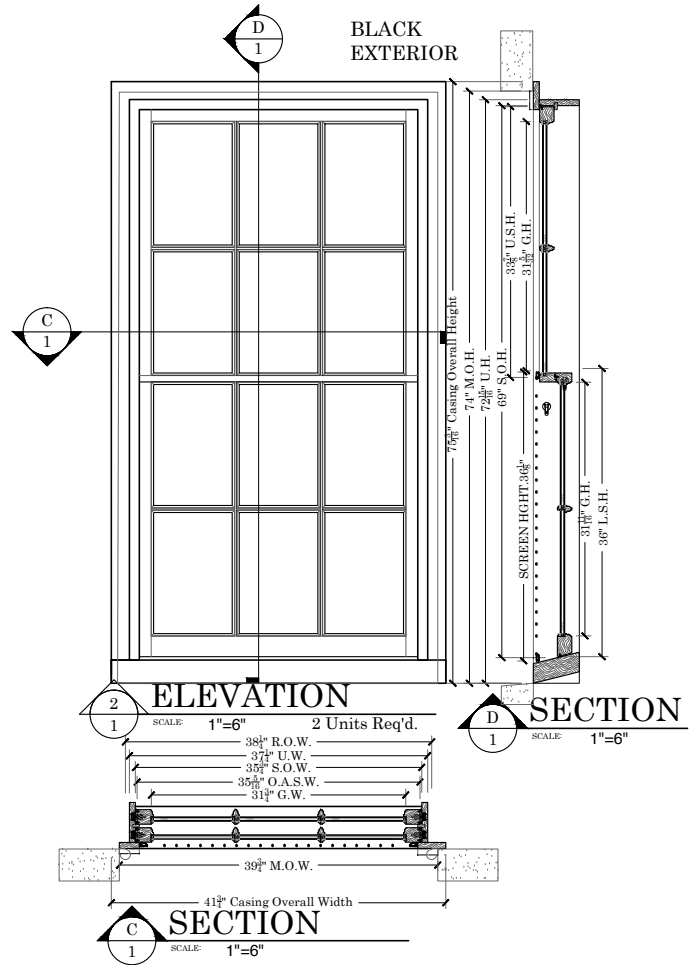
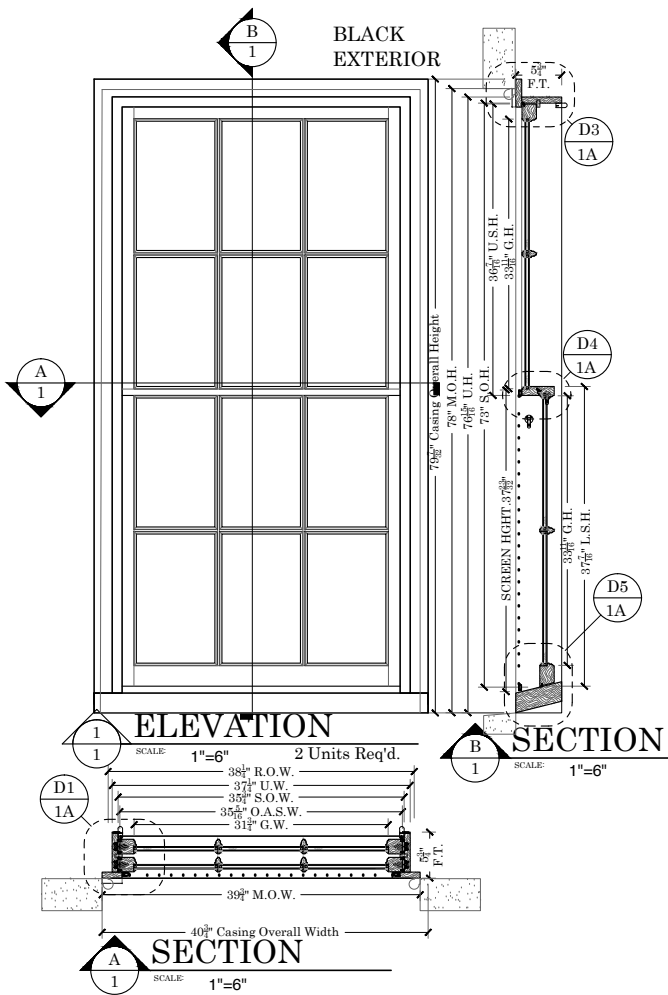


82 Mt Vernon Street
 Beacon Hill
 Boston - 05/31/18
 rev'd 7/9/18

FRONT ELEVATION
 NTS

PROPOSED Front Elevation

A1
 Steven Young, Architect
 617.645.0374
 shimspace.com

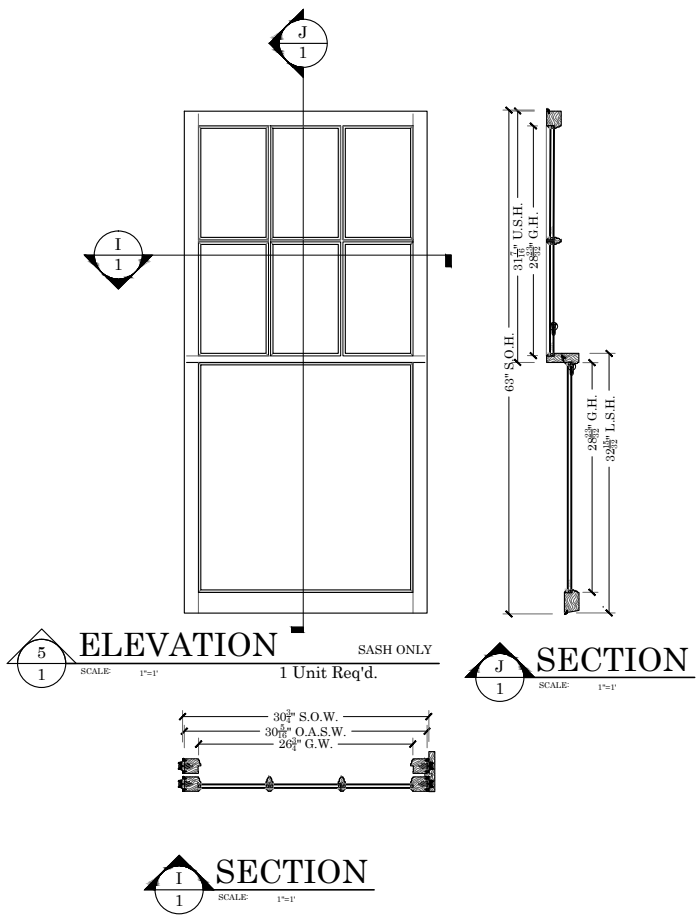
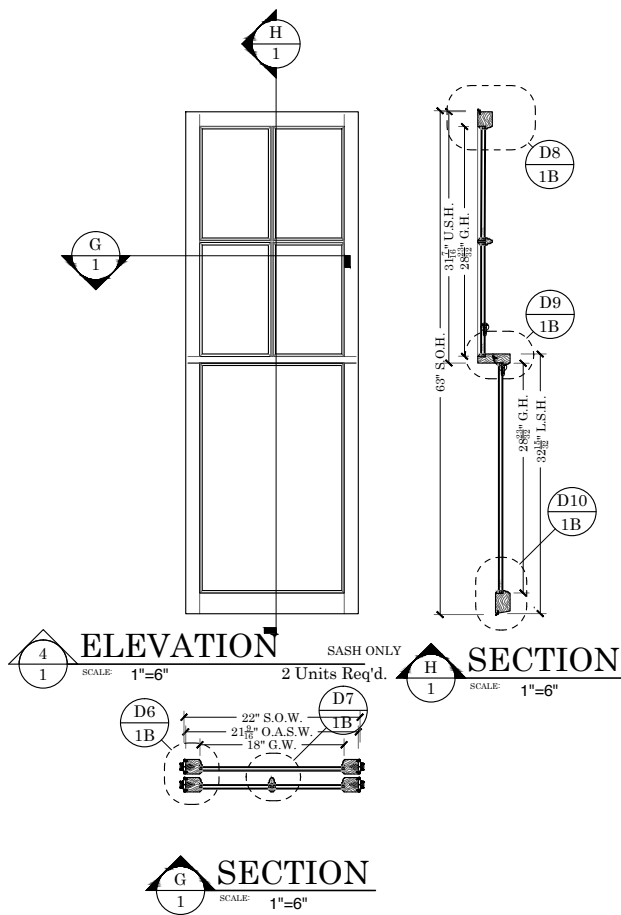


NOTES:

Mahogany double hung windows; primed interior with Ben Moore, HC-83 'Grant Beige' semi-gloss, hand-painted exterior.
 Beige aluminum half screens at DH with charcoal fiberglass screen mesh

Concealed black and tackle balances @ DH
 True divided lite insulated clear glass
 Interior sash stops with weatherstrip and brass screws
 Custom WRC (or equal) Pencil mold prefinished black
 14 degree bevel on sills

A2



NOTES:

- Mahogany double hung windows; primed interior with Ben Moore, HC-83 'Grant Beige' semi-gloss, hand-painted exterior.
- Beige aluminum half screens at DH with charcoal fiberglass screen mesh
- Concealed black and tackle balances @ DH
- True divided lite insulated clear glass
- Interior sash stops with weatherstrip and brass screws
- Custom WRC (or equal) Pencil mold prefinished black
- 14 degree bevel on sills

A3





Grant Beige

HC-83

HC-83