

PREVIOUSLY APPROVED FOURTH FLOOR PLAN
 SCALE: 1/4" = 1'-0"

| | |
|--------------------------------------|-------------------------|
| == | NEW WALL |
| --- | EXISTING WALL TO REMAIN |
| SEE SHEET A15 FOR WALL TYPE SCHEDULE | |

46 Waltham Street, Suite 3A
 Boston, MA 02118
 Phone: 617-956-9972
 Fax: 617-956-9973

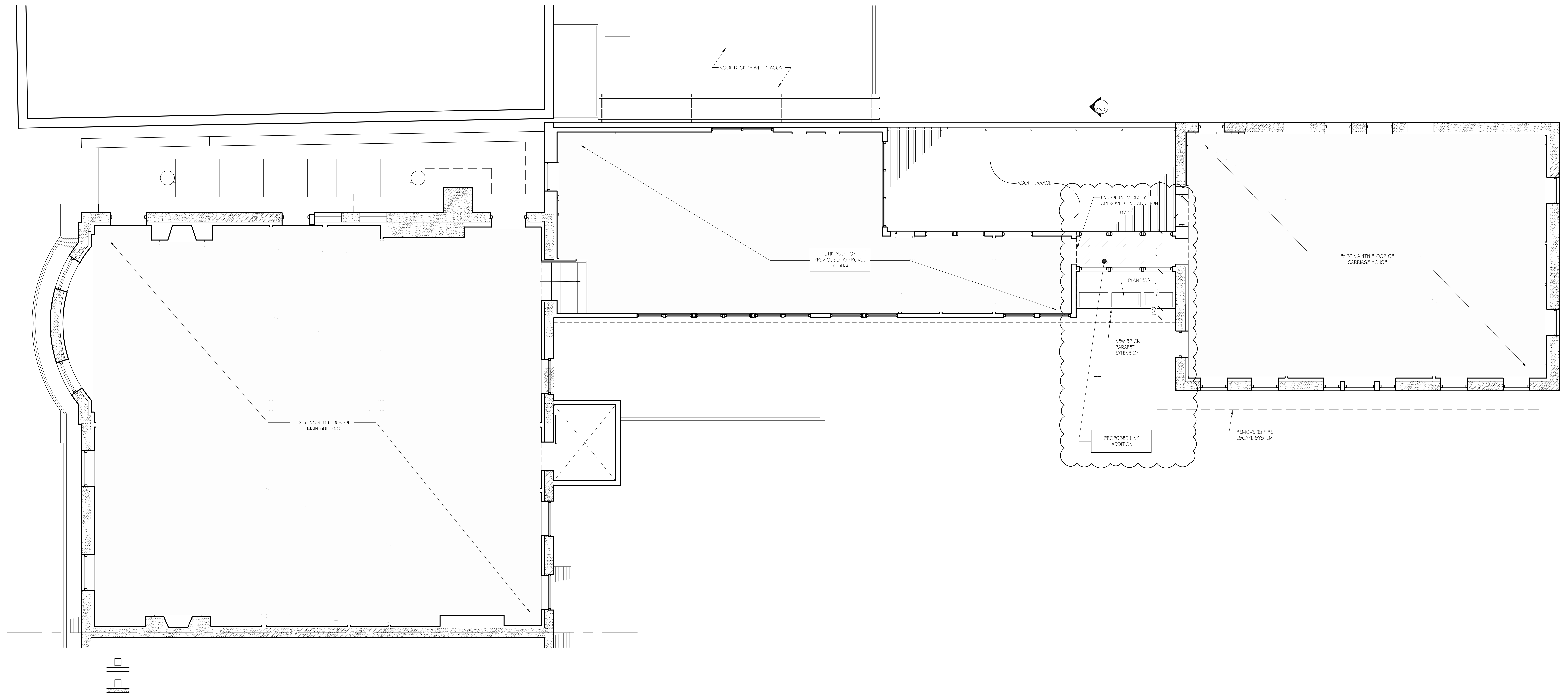
GD GRASSI DESIGN GROUP
 BG BEAUCHEVIN GRASSI INTERIORS

| | |
|------------------|---------------------|
| JOB NO: 1226 | SCALE: 1/4" = 1'-0" |
| DATE: 12.02.2016 | REVISION: |

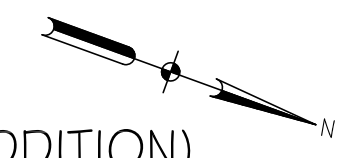
40 BEACON STREET
 BOSTON, MASSACHUSETTS

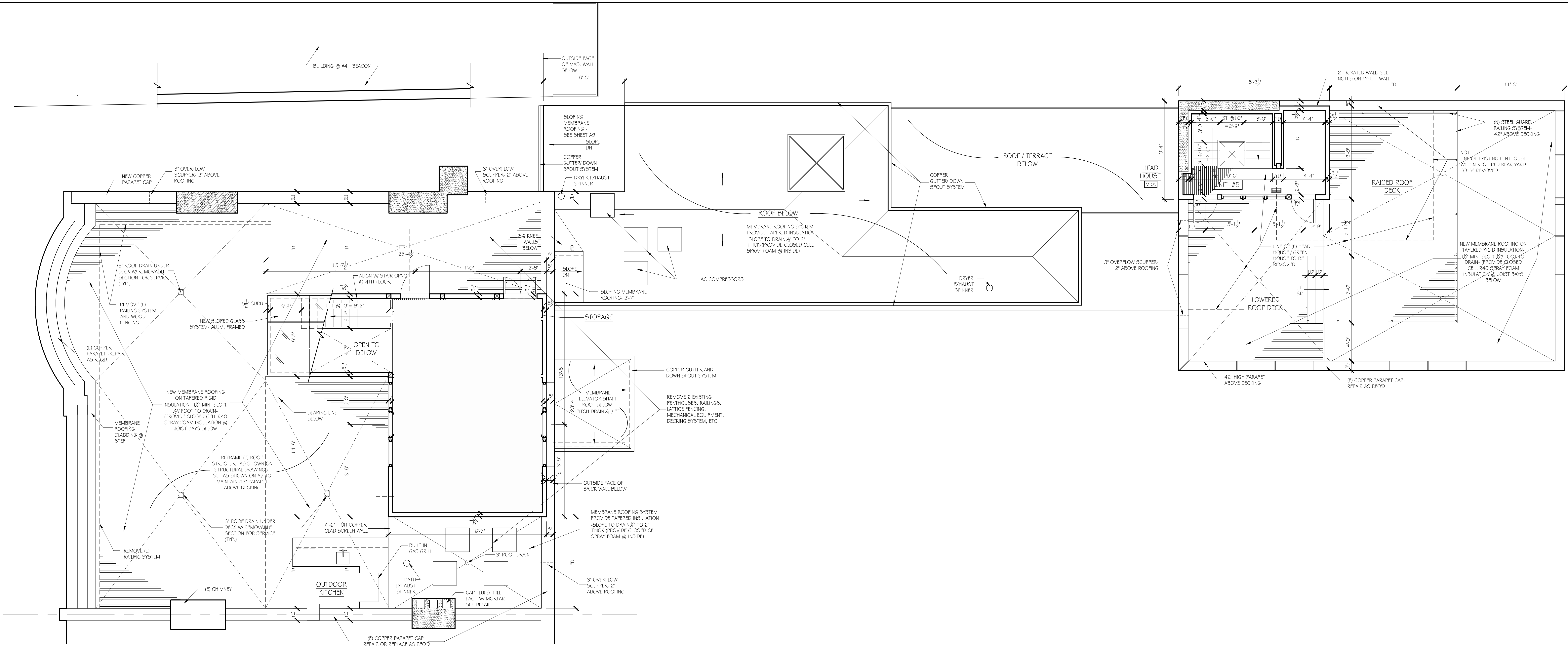
FOURTH FLOOR PLAN

A5



FOURTH FLOOR PLAN (PREVIOUSLY APPROVED ALTERATIONS & PROPOSED ADDITION)
 SCALE: 1/4" = 1'-0"





| | |
|--------------------------------------|-------------------------|
| | NEW WALL |
| | EXISTING WALL TO REMAIN |
| SEE SHEET A15 FOR WALL TYPE SCHEDULE | |

PREVIOUSLY APPROVED ROOF / MEZZANINE PLAN
SCALE: 1/4" = 1'-0"

46 Waltham Street, Suite 3A
Boston, MA 02118
Phone: 617-956-9972
Fax: 617-956-9973

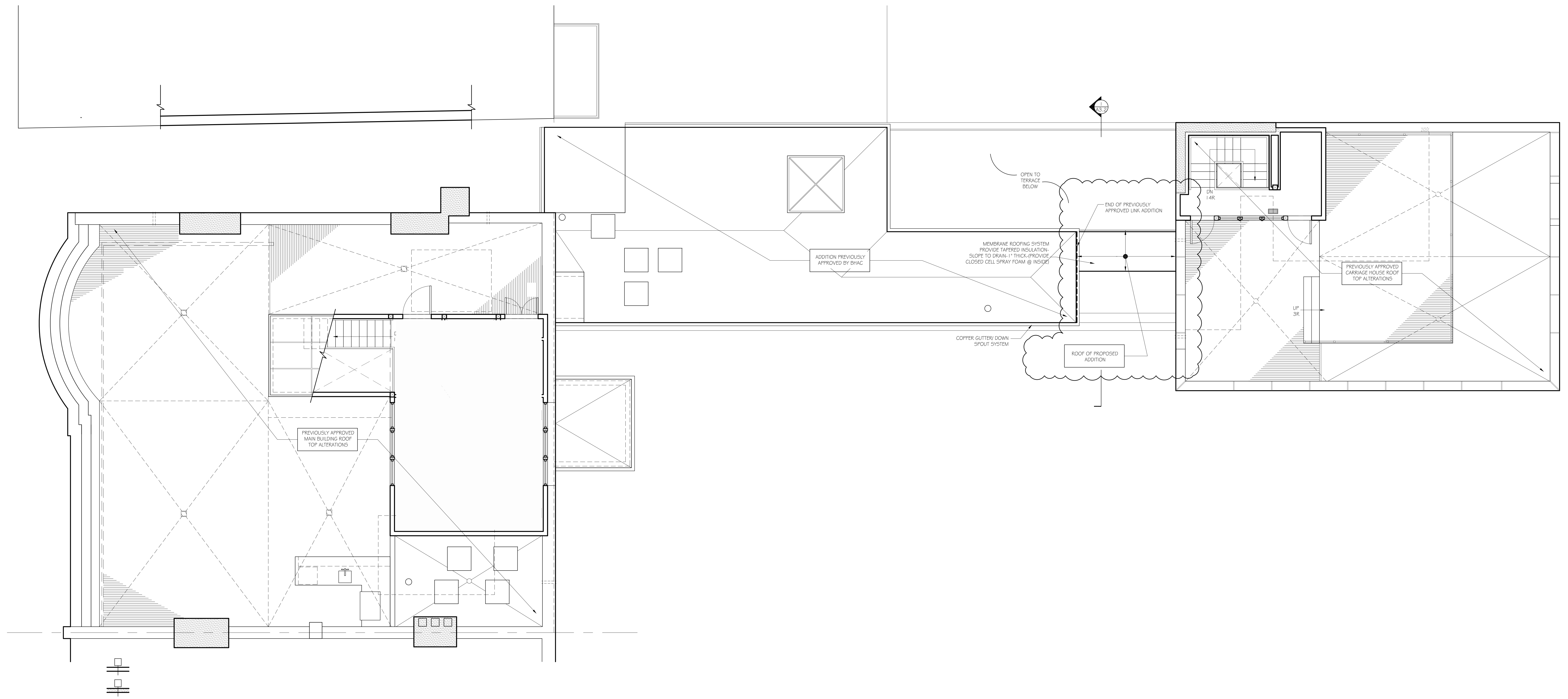
GD GRASSI DESIGN GROUP
BG BEAUCHEMIN GRASSI INTERIORS

| | |
|------------------|---------------------|
| JOB NO: 1226 | SCALE: 1/4" = 1'-0" |
| DATE: 12.02.2016 | REVISED |

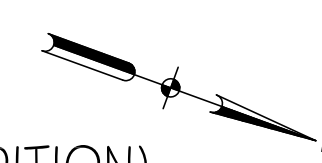
40 BEACON STREET
BOSTON, MASSACHUSETTS

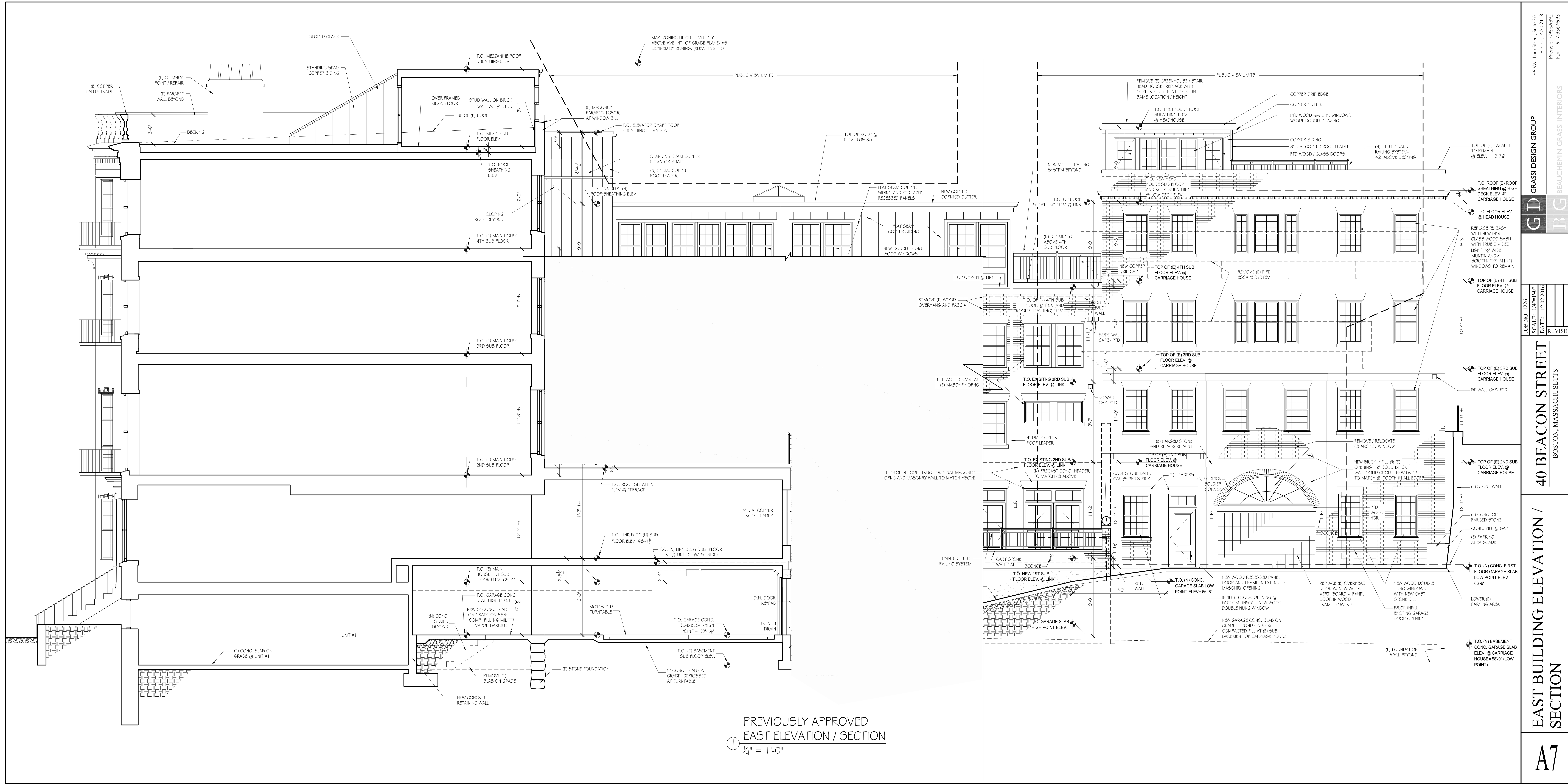
ROOF / MEZZANINE PLAN, NORTH AND SOUTH MEZZ. ROOF PLANS, CARRIAGE HOUSE NORTH BUILDING ELEVATION

A6



ROOF PLAN (PREVIOUSLY APPROVED ALTERATIONS & PROPOSED ADDITION)
 SCALE: 1/4" = 1'-0"





PREVIOUSLY APPROVED
 EAST ELEVATION / SECTION
 1/4" = 1'-0"

46 William Street, Suite 3A
 Boston, MA 02118
 Phone 617-956-9992
 Fax 917-956-9993

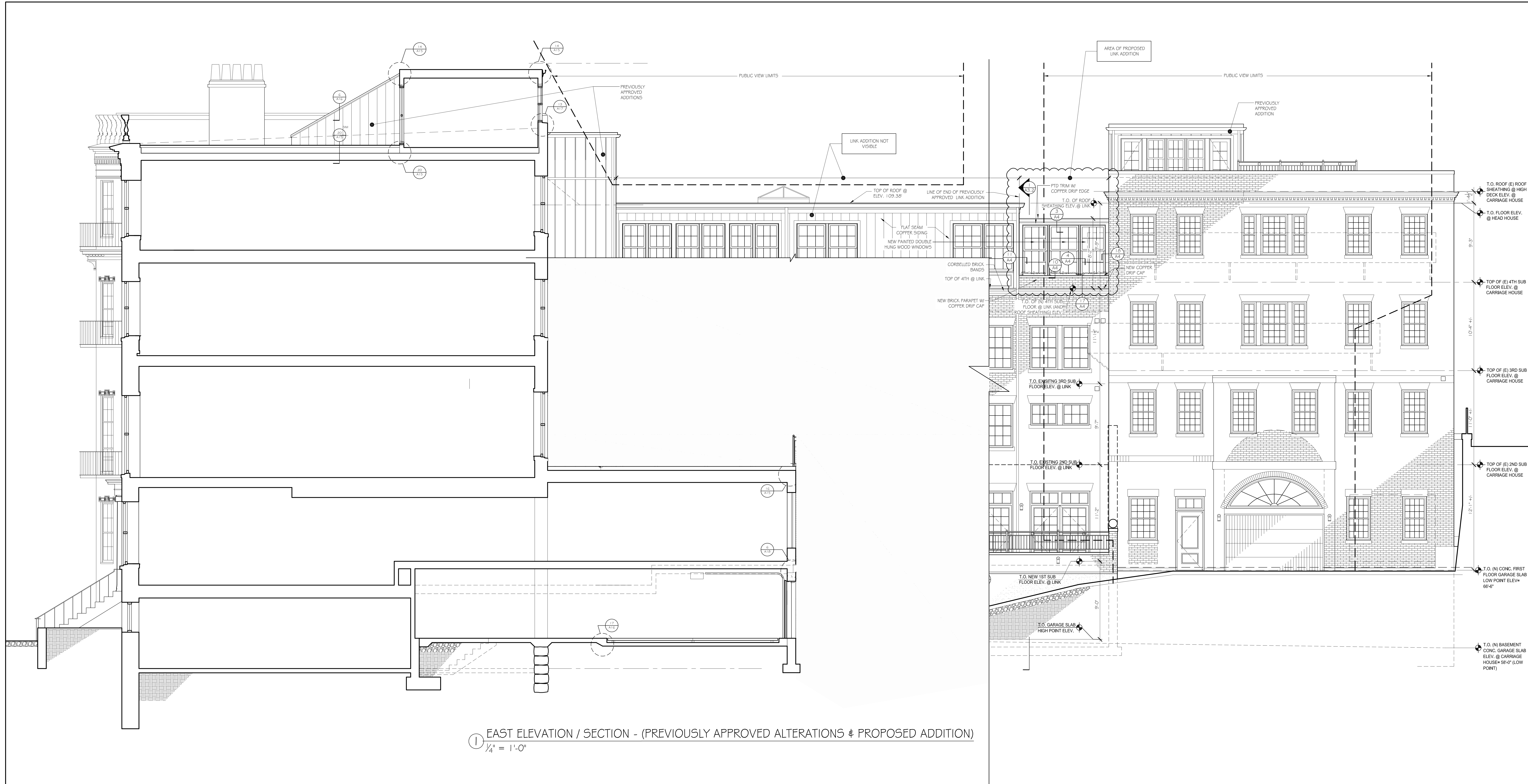
GD GRASSI DESIGN GROUP
IBG BEAUCHEMIN GRASSI INTERIORS

JOB NO: 1226
 SCALE: 1/4" = 1'-0"
 DATE: 12.02.2016
 REVISED

40 BEACON STREET
 BOSTON, MASSACHUSETTS

EAST BUILDING ELEVATION / SECTION

A7



① EAST ELEVATION / SECTION - (PREVIOUSLY APPROVED ALTERATIONS & PROPOSED ADDITION)
 1/4" = 1'-0"

46 William Street, Suite 3A
 Boston, MA 02118
 Phone 617-956-9992
 Fax 917-956-9993

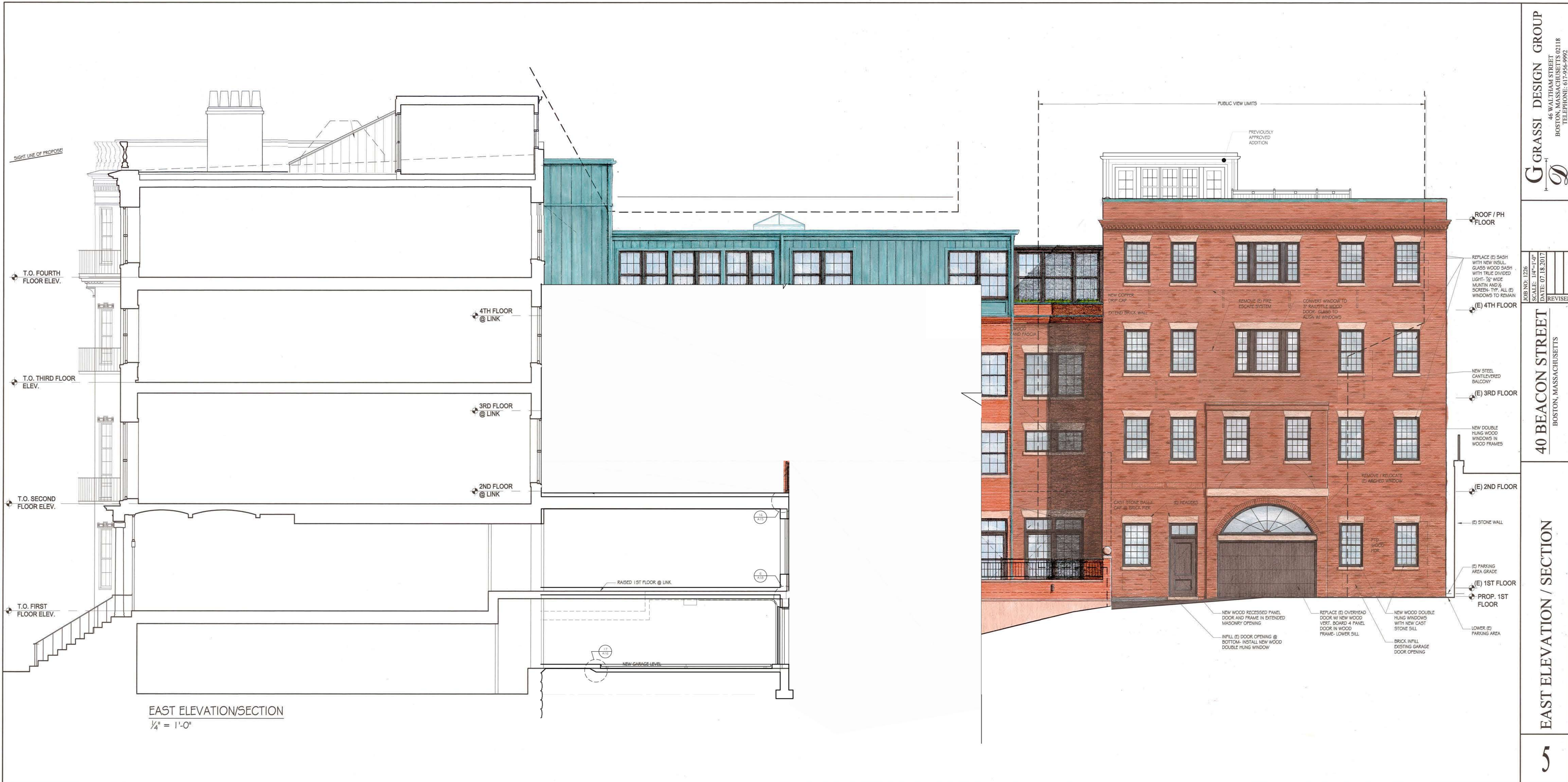
GD GRASSI DESIGN GROUP
IRG BEAUCHEMIN GRASSI INTERIORS

JOB NO: 1226
 SCALE: 1/4" = 1'-0"
 DATE: 06-29-2017
 REVISED

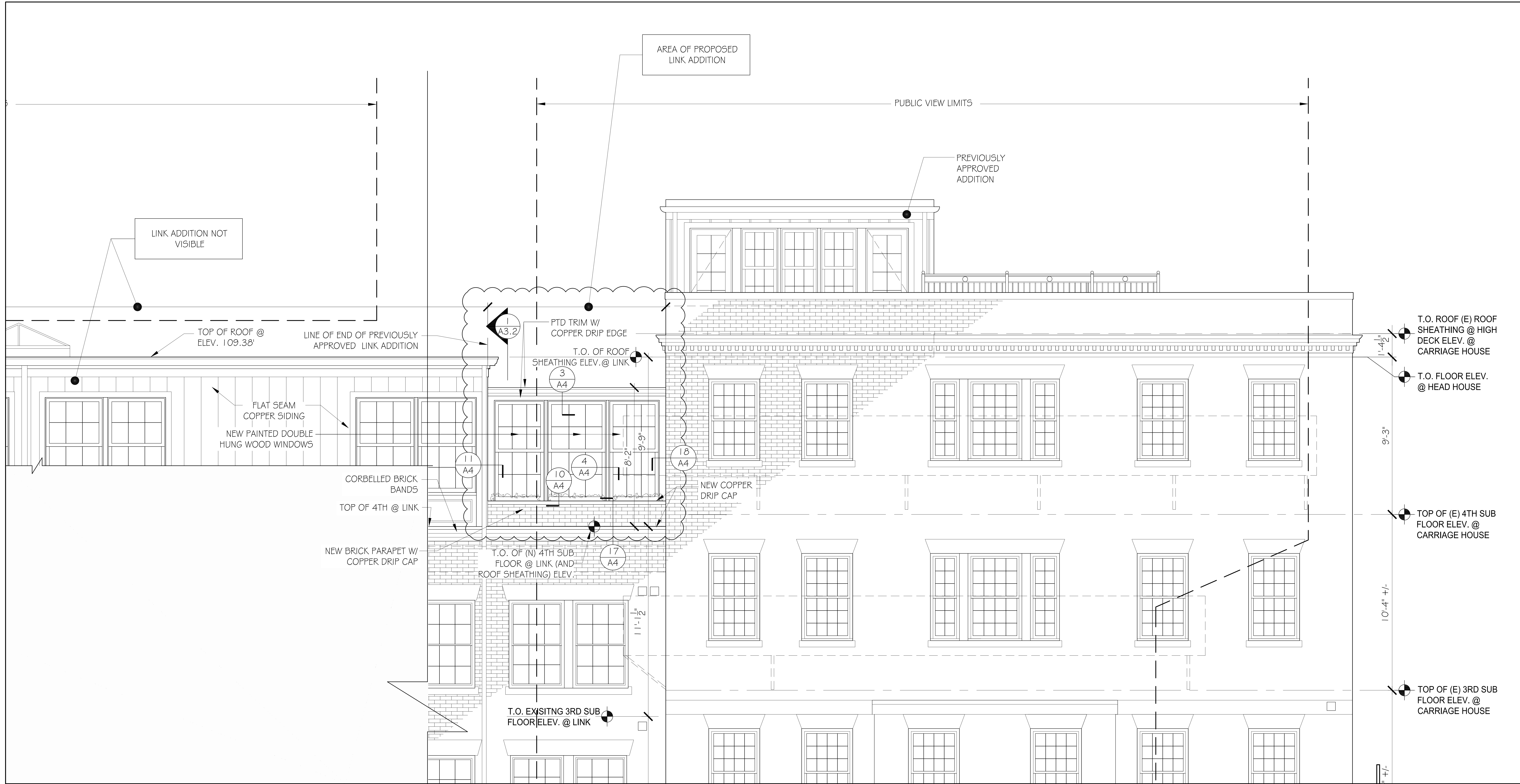
40 BEACON STREET
 BOSTON, MASSACHUSETTS

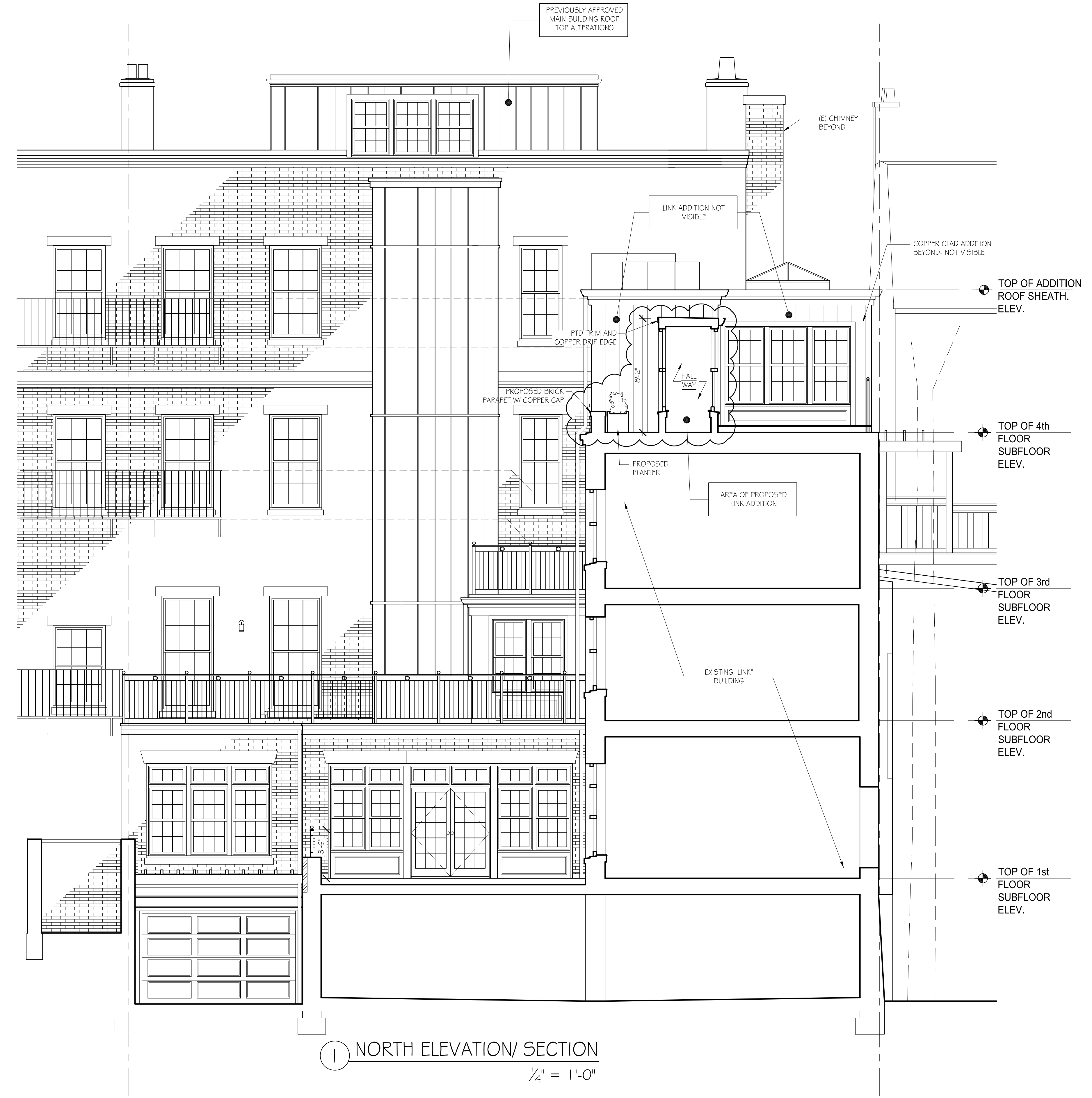
EAST BUILDING ELEVATION / SECTION

A3



EAST ELEVATION/SECTION
 1/4" = 1'-0"





1 NORTH ELEVATION / SECTION
 1/4" = 1'-0"

46 Walham Street, Suite 3A
 Boston, MA 02118
 Phone 617-956-9992
 Fax 917-956-9993

GD GRASSI DESIGN GROUP
 BG BEAUCHEMIN GRASSI INTERIORS

JOB NO: 1226
 SCALE: 1/4" = 1'-0"
 DATE: 06.29.2017
 REVISED

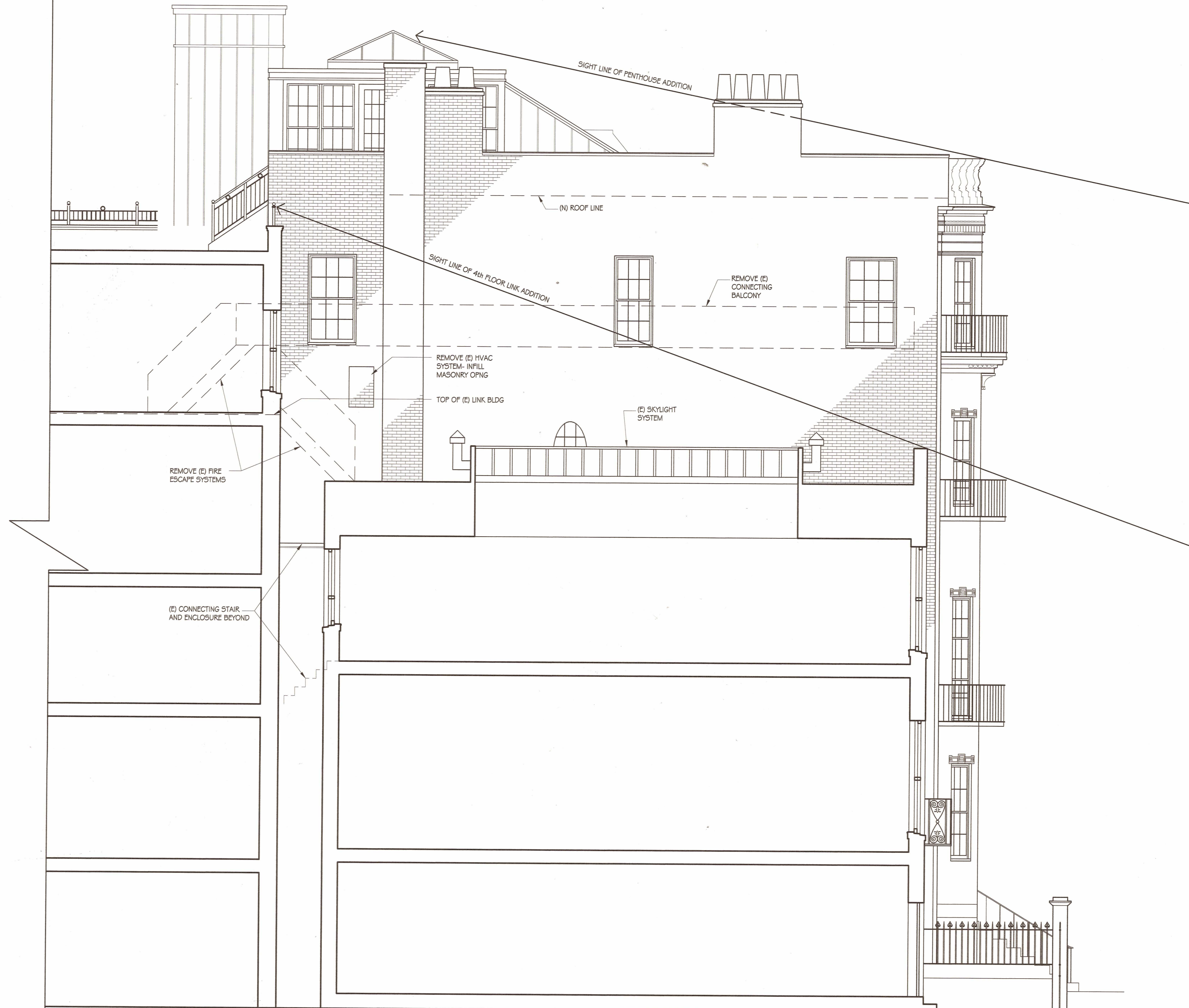
40 BEACON STREET
 BOSTON, MASSACHUSETTS

NORTH BLDG ELEVATION / SECTION
 THRU LINK BUILDING

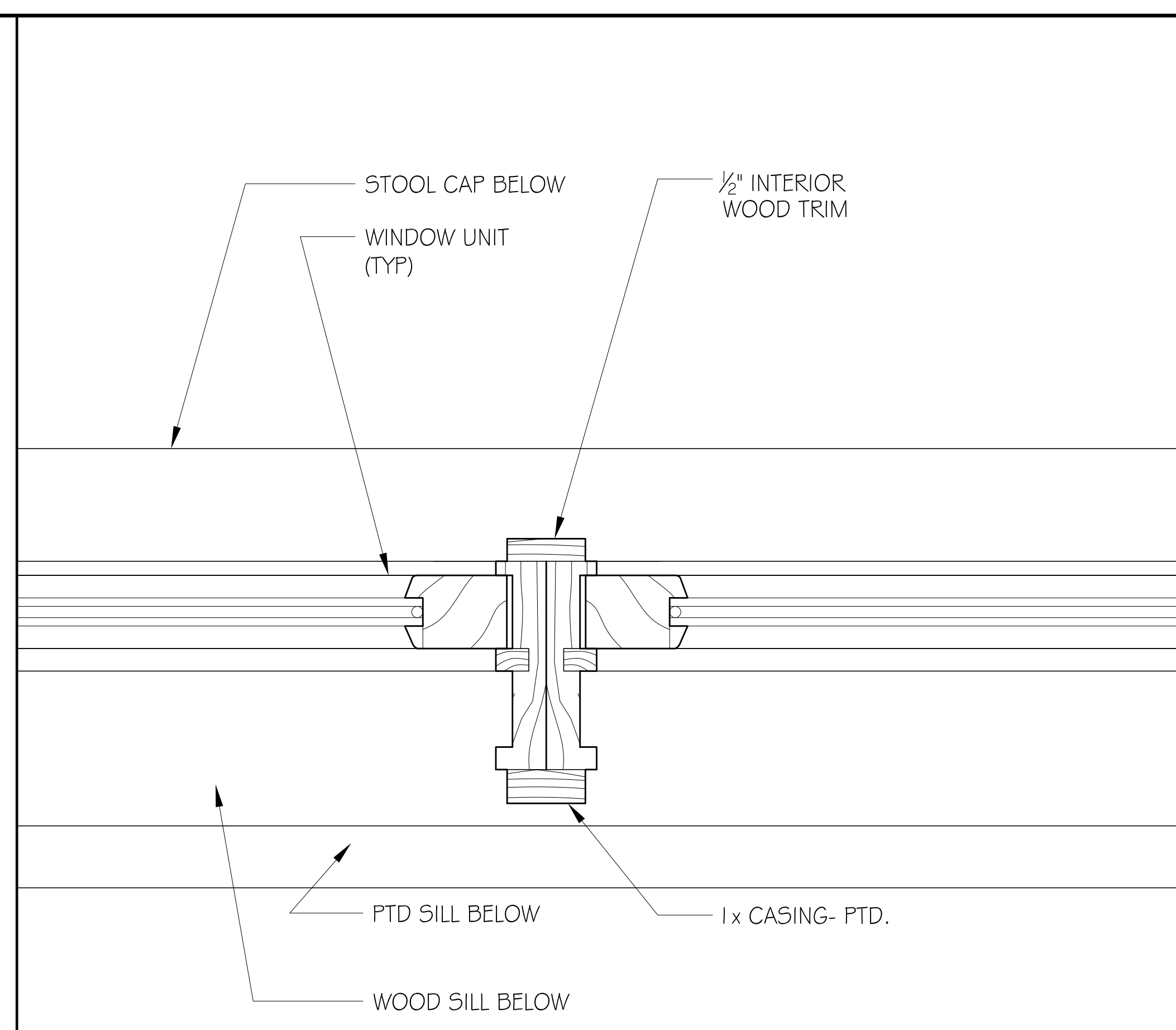
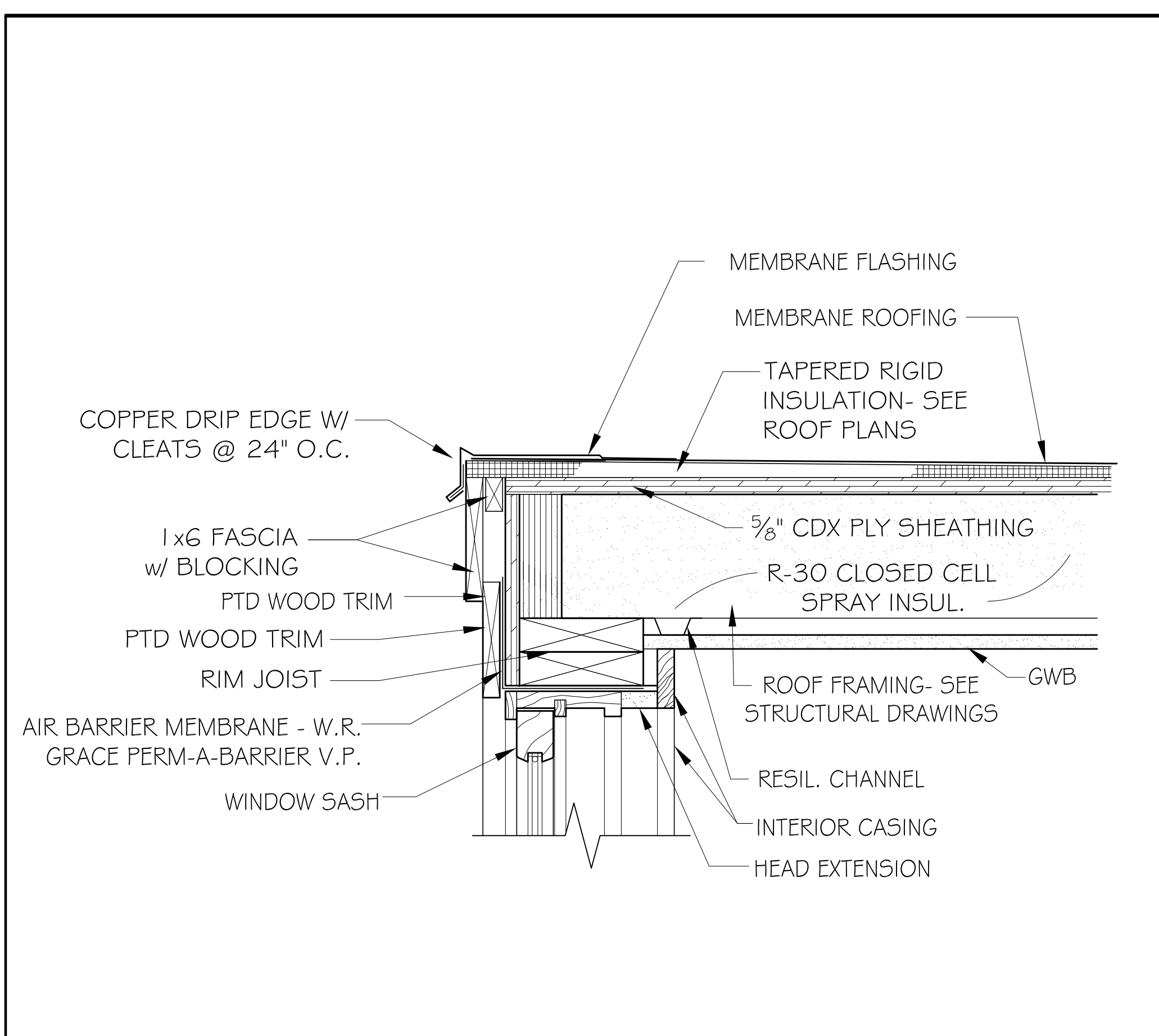
A3.2



SOUTH ELEVATION
1/4" = 1'-0"

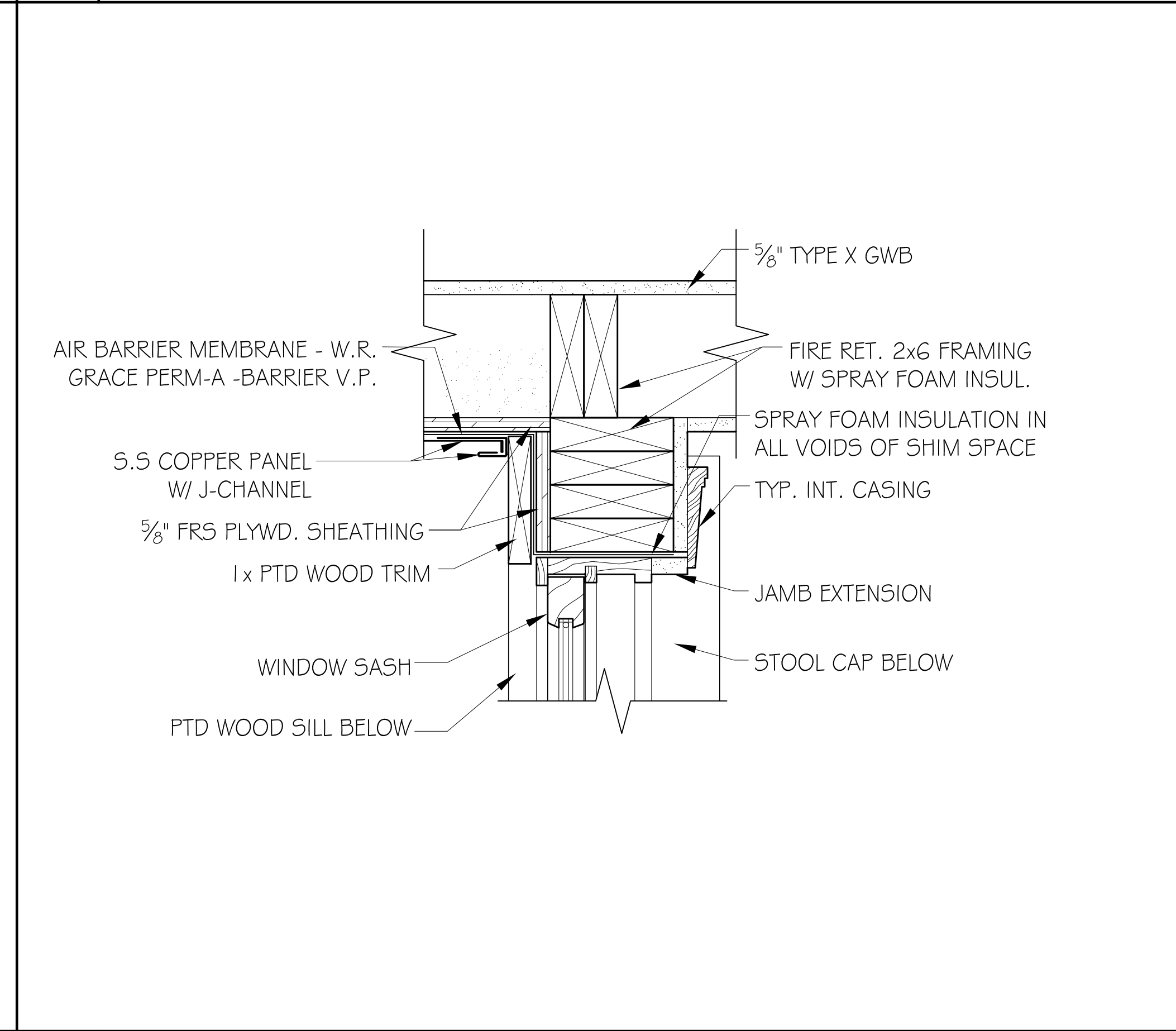
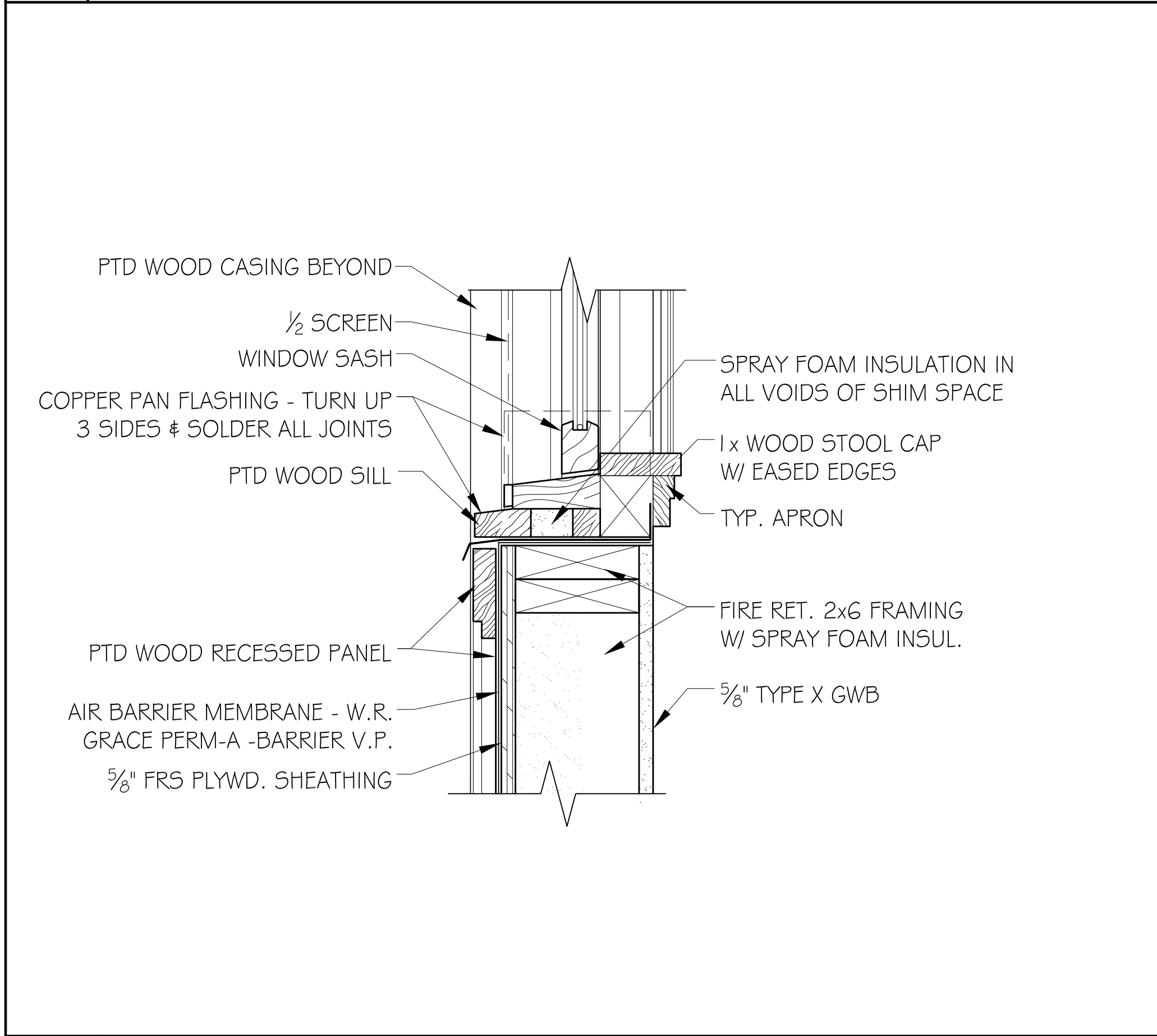


PARTIAL WEST ELEVATION/SECTION
1/4" = 1'-0"



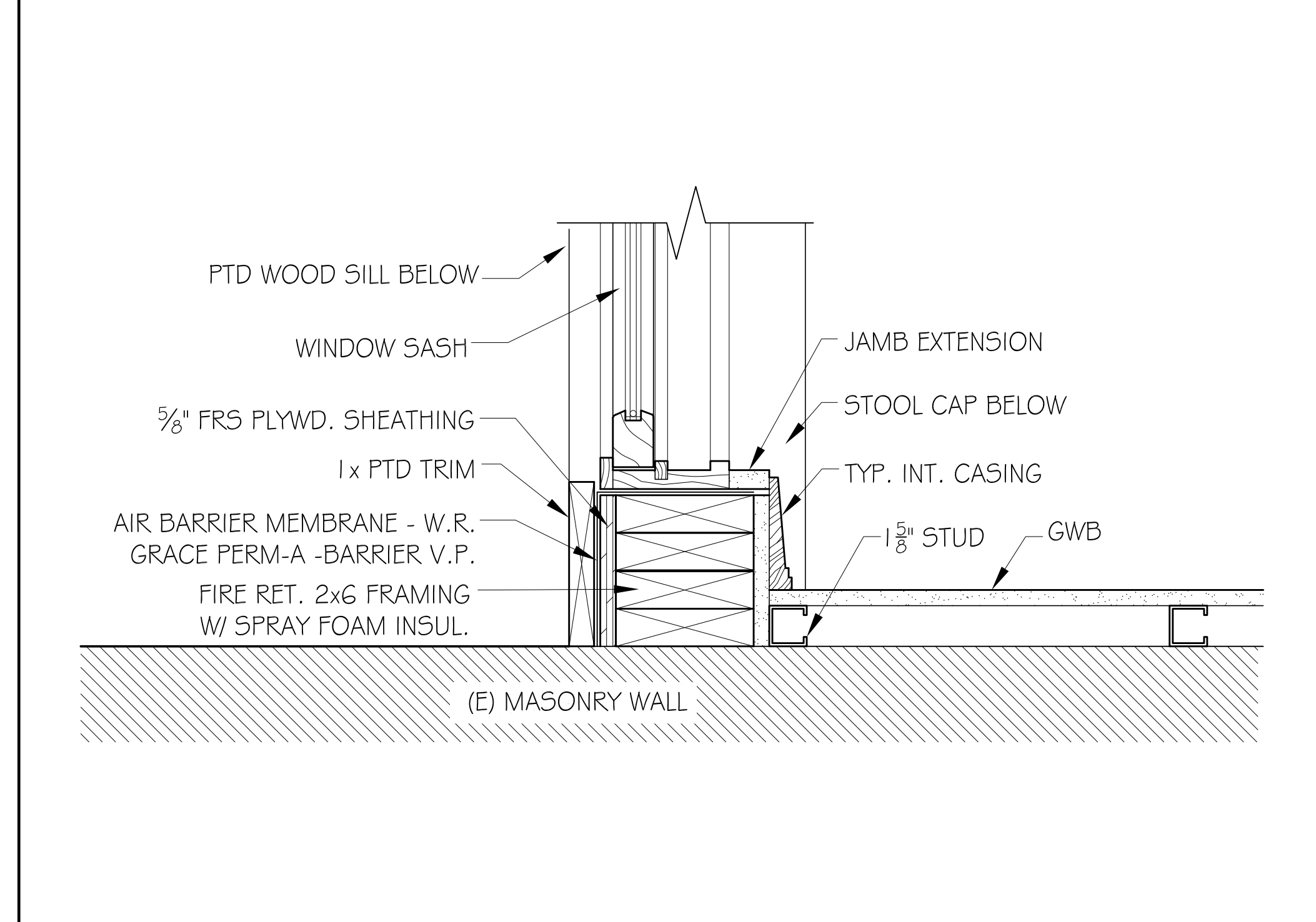
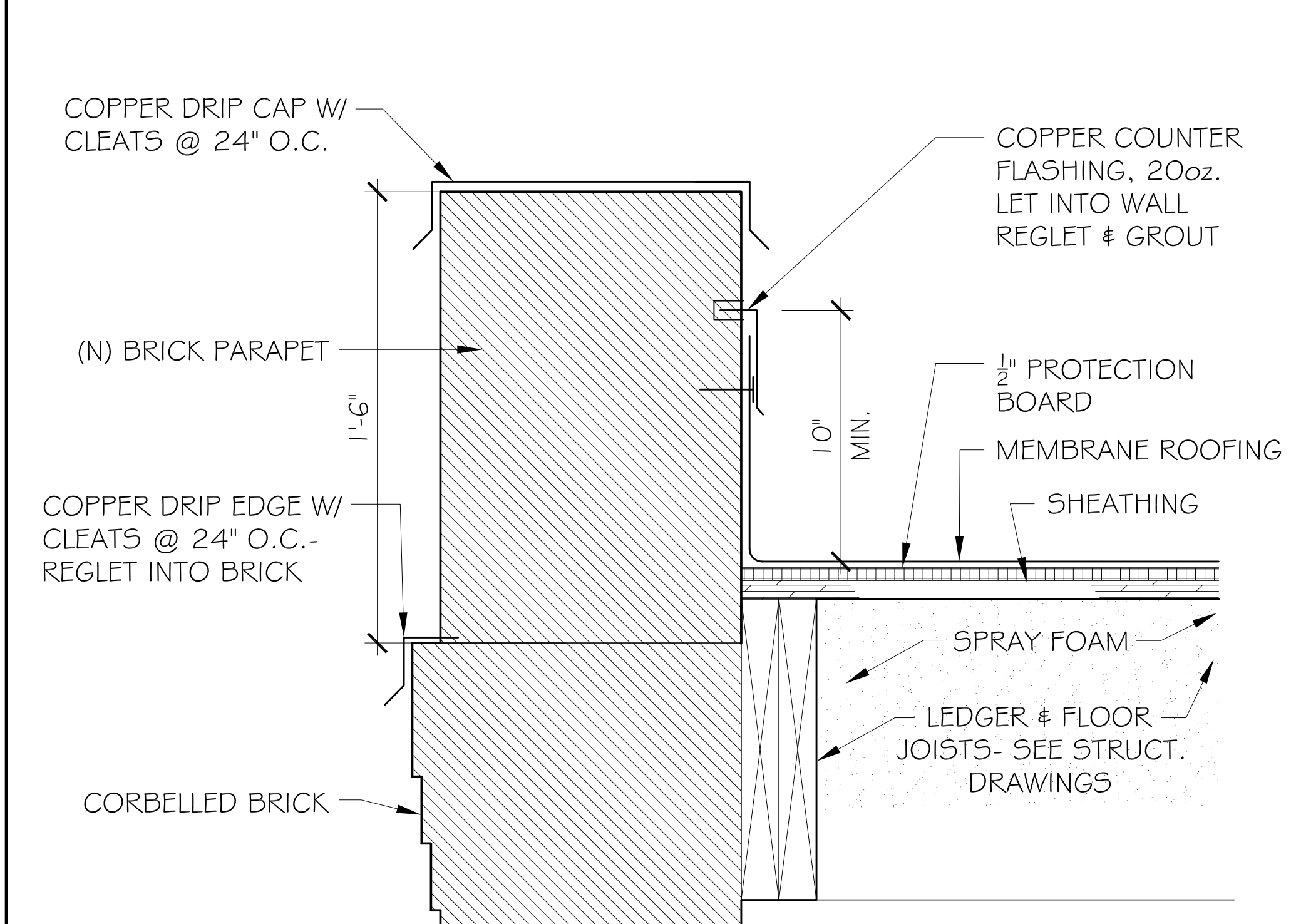
3 ROOF / WINDOW HEAD DETAIL @ LINK ADDITION 1/2"=1'-0"

4 MULLED WINDOW DETAIL 3"=1'-0"



10 WINDOW SILL @ LINK ADDITION 1/2"=1'-0"

11 WINDOW JAMB @ LINK ADDITION (STUD WALL) 1/2"=1'-0"



17 LINK ADDITION WALL DETAIL @ 4th FLOOR 1/2"=1'-0"

18 WINDOW JAMB @ LINK ADDITION (MAS. WALL) 1/2"=1'-0"



Historic New England
Library and Archives
141 Cambridge St.
Boston, MA 02114



**EXISTING 40 BEACON ST.
(FROM SIDEWALK ACROSS
BEACON ST.) 06.29.17**



EXISTING 40 BEACON ST.
(FROM WALNUT ST. DRIVEWAY)
06.29.17



PROPOSED 40 BEACON ST.
4TH FLOOR LINK ADDITION
RENDER (FROM WALNUT
ST. DRIVEWAY) 06.29.17



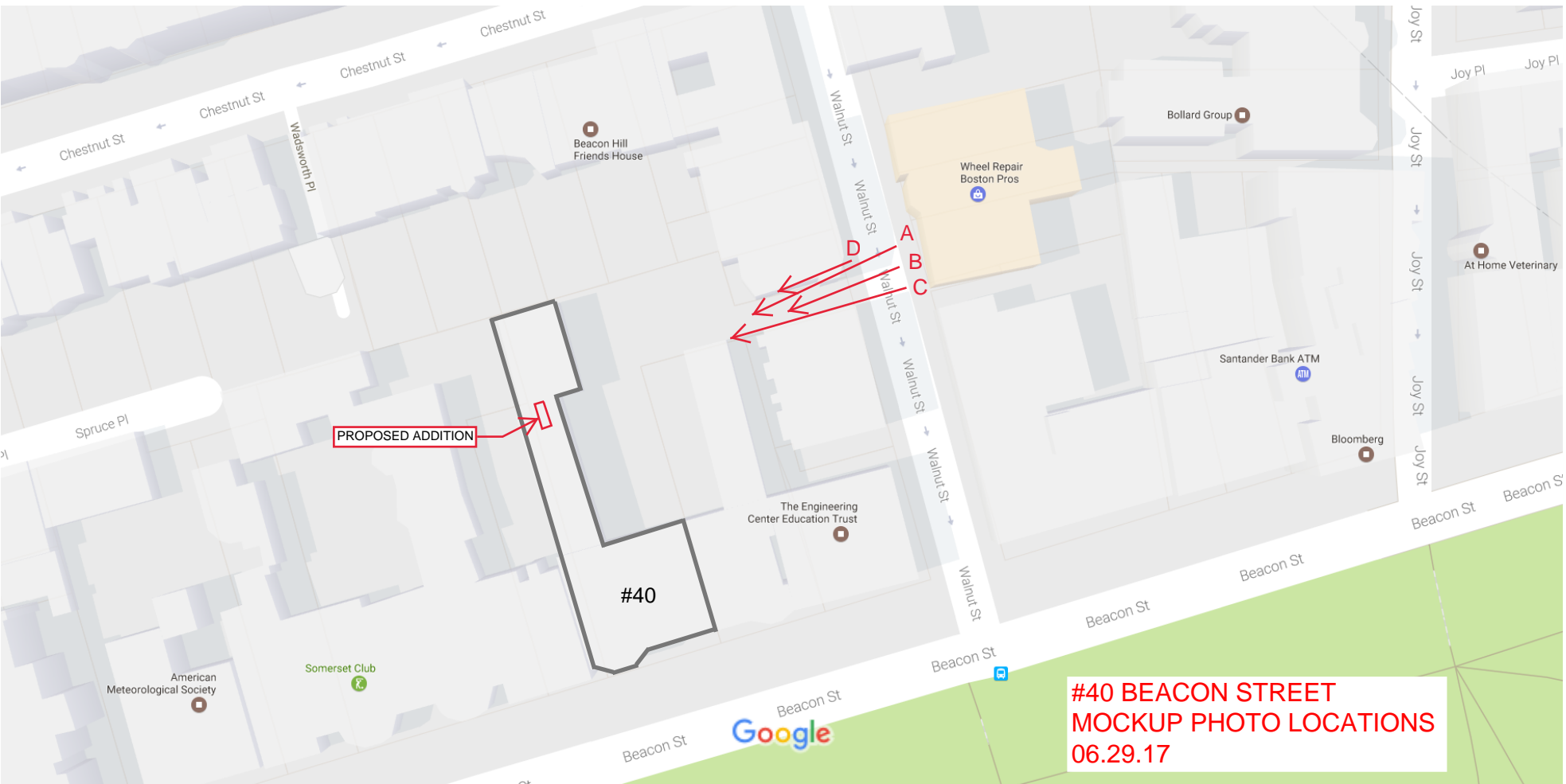
EXISTING 40 BEACON ST.
(FROM DRIVEWAY) 06.29.17



**EXISTING 40 BEACON ST.
(FROM ROOF OF MAIN BLDG)
06.29.17**



EXISTING 40 BEACON ST.
(FROM ROOF OF LINK BLDG)
06.29.17



PROPOSED ADDITION

#40

A
B
C
D

#40 BEACON STREET
MOCKUP PHOTO LOCATIONS
06.29.17



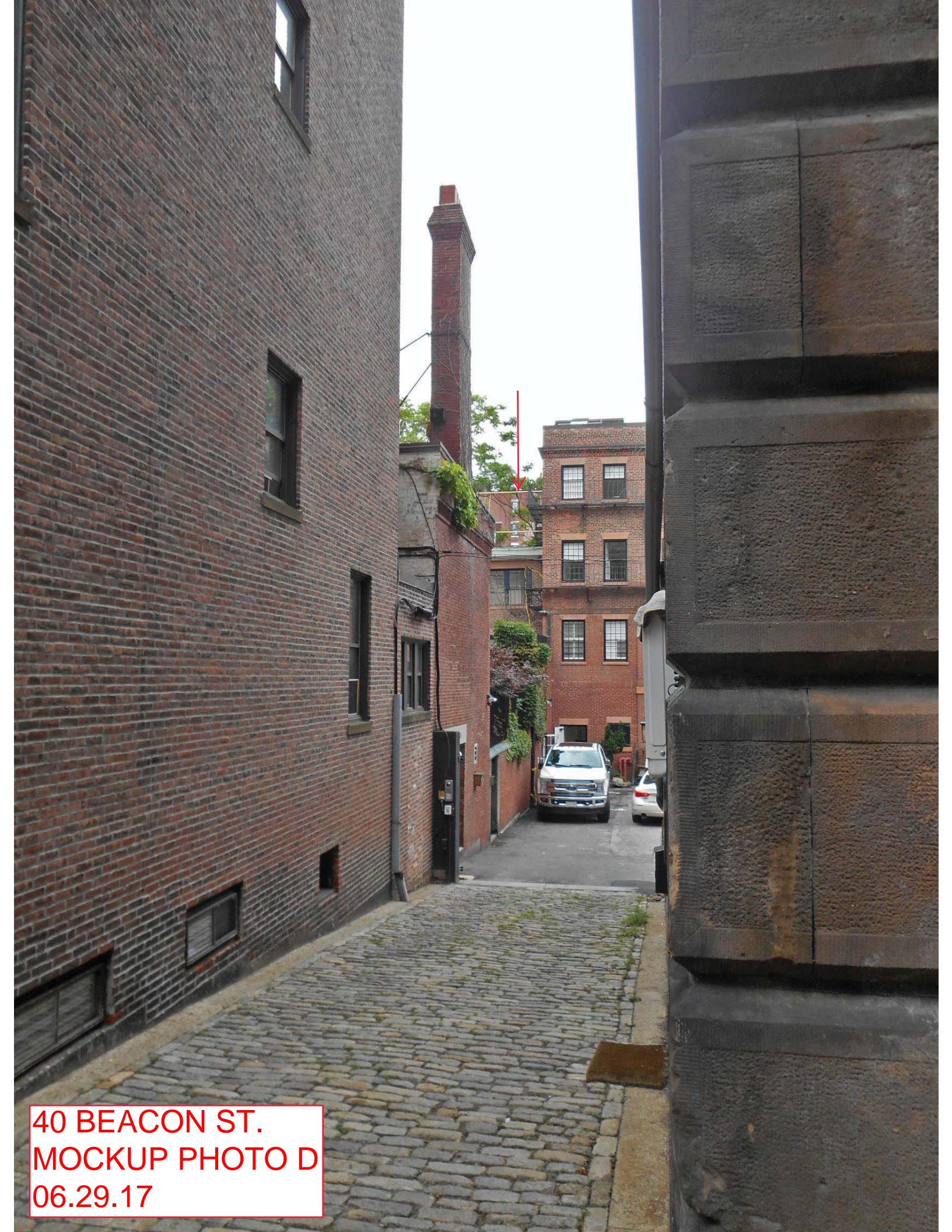
40 BEACON ST.
MOCKUP PHOTO A
06.29.17



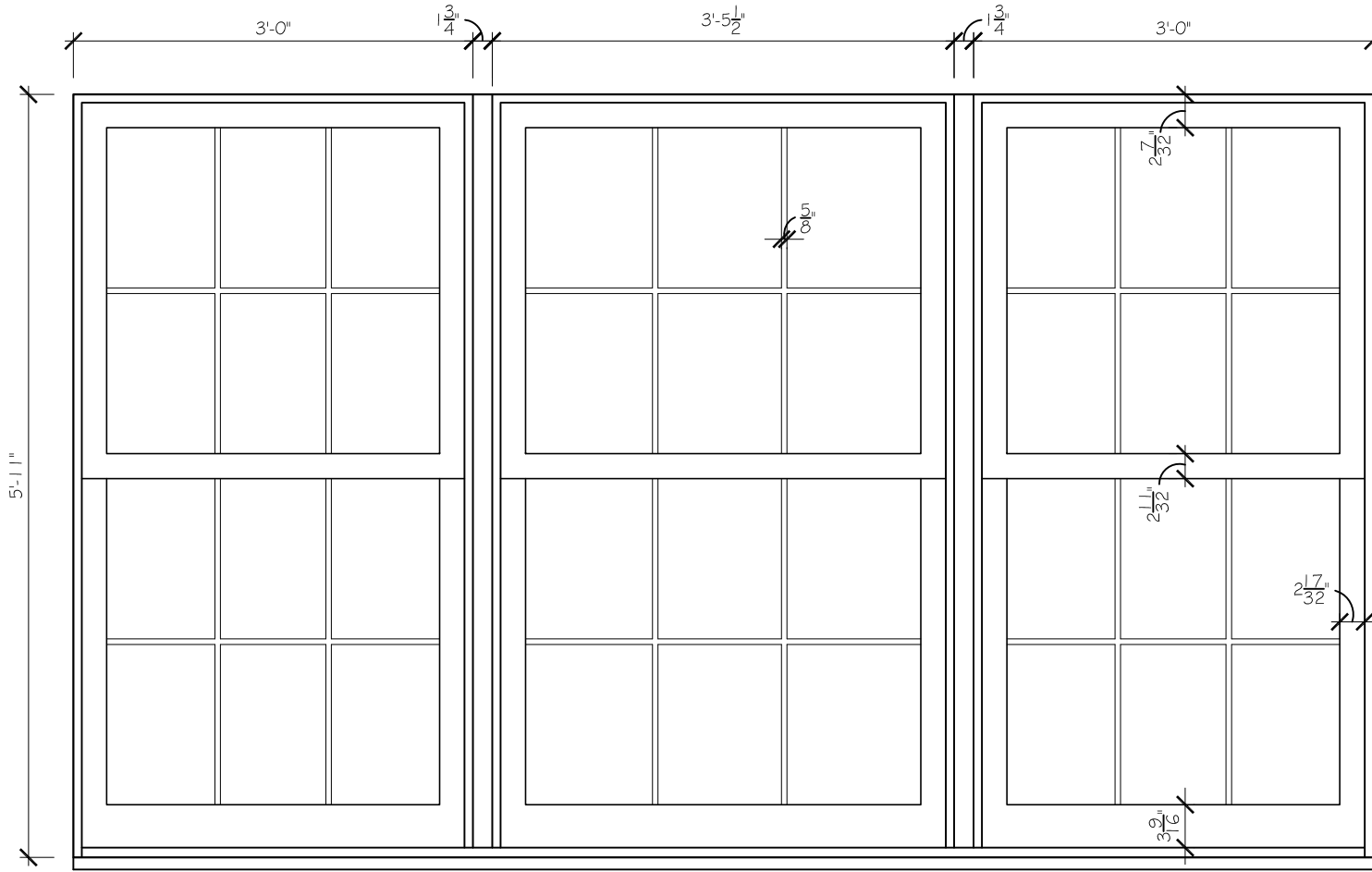
40 BEACON ST.
MOCKUP PHOTO B
06.29.17



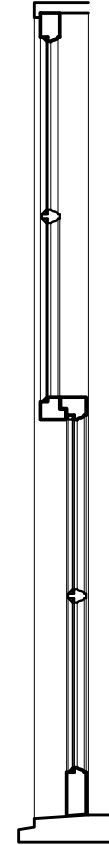
40 BEACON ST.
MOCKUP PHOTO C
06.29.17



40 BEACON ST.
MOCKUP PHOTO D
06.29.17



ELEVATION

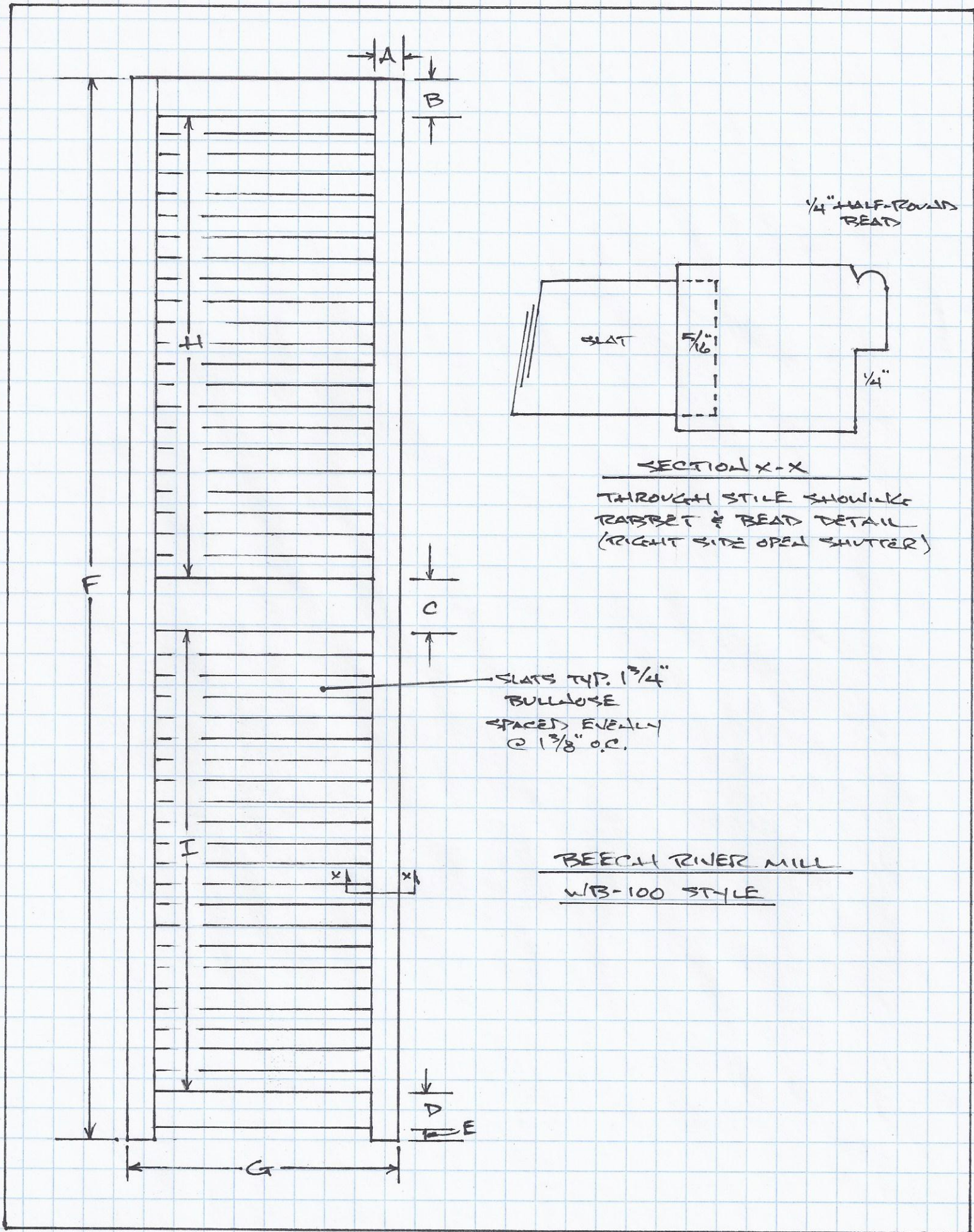


SECTION

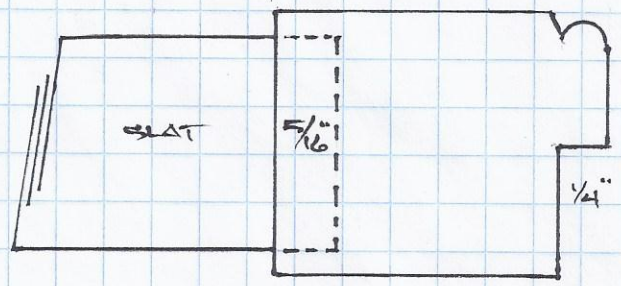
40 BEACON STREET
BOSTON MA

SCALE: 3/4" = 1'-0"
JOB #: 1226
DATE: 06.29.17

WINDOWS @ PROPOSED 4TH FLOOR ADDITION



1/4" HALF-ROUND BEAD



SECTION X-X

THROUGH STILE SHOWING RABBIT & BEAD DETAIL (RIGHT SIDE OPEN SHUTTER)

SLATS TYP. 1 3/4" BULLMOSE SPACED EVENLY @ 1 3/8" O.C.

BEECH RIVER MILL
WB-100 STYLE

804 Series Beacon Hill



Our “Beacon Hill Tieback”™ takes its name from its home. This is about the only original tieback seen on Beacon Hill in Boston.

Early examples date from around 1800 and it's advertised in hardware catalogues as late as 1889. I assumed it was local to Boston until I saw examples in Annapolis, Chestertown, and Charlestown, SC. As Boston as beans, this tieback apparently found its way on New England coastal trading vessels and spread along the Atlantic seaboard through the 1800's. We forge this piece from a bar of ½" square steel. Made exactly the way the originals were, our Beacon Hill Tieback™ has the weight and three dimensionality of the early work – worlds nicer than the machine cut and “roughed up with a hammer” work that's being imported and sold under the same name today.

Sizes & Prices

- 7" h x 1-1/4" w – \$34.00
- Offset Beacon Hill – \$36.00

Add \$4.00 for painted

Hinges: Midweight Hinge and Pintles



1000 Series Traditional Pintle/Hinge System

1 3/8" throw, galvanized coated. This Pintle/Hinge combination is employed to mount shutters to the outside of window casings on wooden framed structures.

Sizes & Prices

- \$28.99

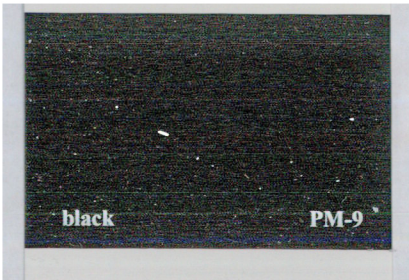
Add \$ for painted

#40 BEACON STREET - 06.29.17

BENJAMIN MOORE CLASSIC PAINT COLORS



DOORS @ JOY STREET ELEVATION
ESSEX GREEN PM-11



IRON WORK FRONT/REAR AND
WINDOWS @ ADDITION
BLACK PM-9



WINDOWS & TRIM @ FRONT & NORTH ELEVATIONS,
REAR TRIM AND SIDING
WHITE DOVE PM-19