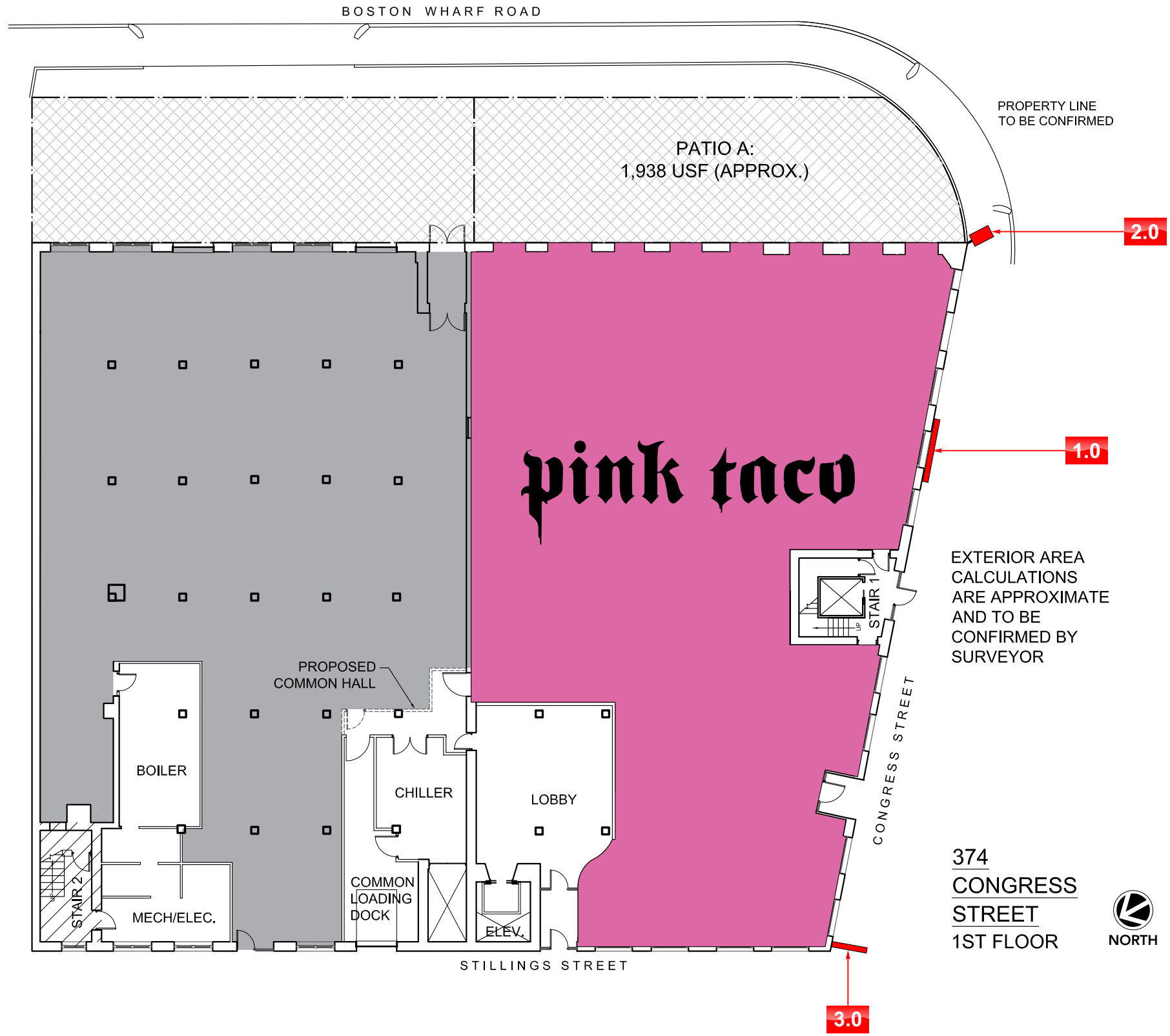




WEST COAST HQ.
2231 S. Dupont Drive
Anaheim, CA 92806
800-655-9972

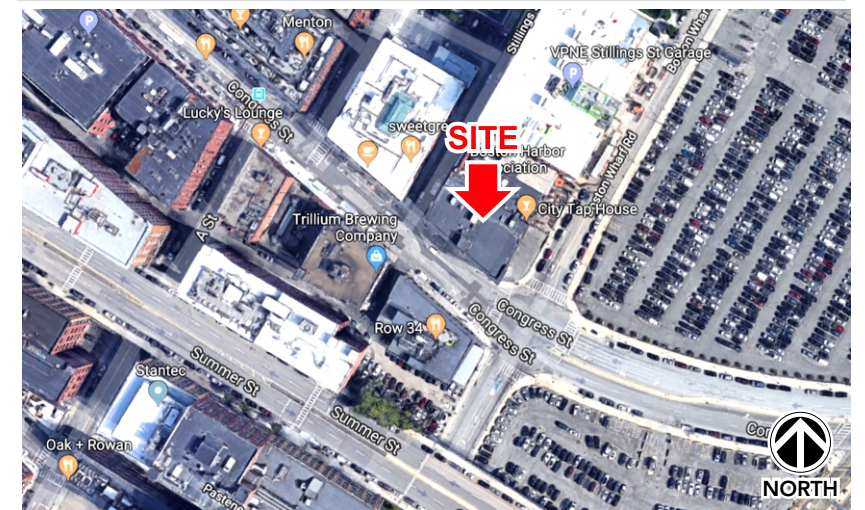
SITE PLAN



SIGNAGE SPECIFICATIONS

- 1.0 FAUX NEON & HALO LETTERS on CONTOUR BACKER:**
Manufacture and Install (1) One Set of Channel Letters.
- 2.0 MULTI-ILLUMINATED MARQUEE SIGN:**
Manufacture and Install (1) One Sign.
- 3.0 D/F NON-ILLUMINATED FLAG MOUNTED SIGN:**
Manufacture and Install (1) One Sign.

AERIAL MAP



VICINITY MAP



PS 127:1

PROJECT

CLIENT

JOB / DRAWING #



WEST COAST HQ.
2231 S. Dupont Drive
Anaheim, CA 92806
800-655-9972

Project Name: PINK TACO / BOSTON

Address: 374 Congress St.

City, State, Zip: Boston, MA 02210

Client Approval:

Landlord Approval:

Designer: Trong T.

Sales: Chris D.

All ideas, designs, arrangements, and plans indicated or represented by this drawing are owned by and the property of Signage-Solutions, and were created, evolved and developed for use on and in connection with the specified project. None of such ideas, designs, arrangements or plans shall be used by or disclosed to any person, firm or corporation for any purpose what so ever without written permission.

#	Designer:	Date:	Revision Notes:
1	Trong T.	05/10/18	
2			
3			
4			
5			
6			
7			
8			
9			
10			



171128-01

Page 2 of 7



CONCEPTUAL PHOTO RENDERING

Scale: 3/16" = 1'-0"

SIGNAGE SOLUTIONS
 WEST COAST HQ.
 2231 S. Dupont Drive
 Anaheim, CA 92806
 800-655-9972

Project Name: PINK TACO / BOSTON
 Address: 374 Congress St.
 City, State, Zip: Boston, MA 02210

Client Approval:
 Landlord Approval:
 Designer: Trong T. Sales: Chris D.

All ideas, designs, arrangements, and plans indicated or represented by this drawing are owned by and the property of Signage-Solutions, and were created, evolved and developed for use on and in connection with the specified project. None of such ideas, designs, arrangements or plans shall be used by or disclosed to any person, firm or corporation for any purpose what so ever without written permission.

#	Designer:	Date:	Revision Notes:
1	Trong T.	05/10/18	
2			
3			
4			
5			
6			
7			
8			
9			
10			

pink taco

171128-01



1.0 FAUX NEON & HALO ON CONTOUR BACKER MOUNTED TO RACEWAY CABINET

Sign Sq. Ft. 27.11

Scale: 1" = 1'-0"



SQUARE FOOTAGE

27.11 SQ. FT. PROPOSED

MATERIALS

M1	.063 ALUM CHNL LTR RETURNS
M2	.080 ALUM CHNL LTR FACES
M3	3/16" CLEAR ACRYLIC BACKS
M4	1/2" WHITE ACRYLIC PUSH THRU
M5	.080 ALUM. CONTOUR BACKER
M6	8" DEEP ALUM. RACEWAY

PAINT FINISH

P1	BLACK
P2	MATTHEWS BRUSHED ALUM
P3	P.T.M. EXISTING MULLION

VINYLS

V1	PINK TRANSLUCENT VINYL
----	------------------------

ILLUMINATION

LED	WHITE L.E.D.
-----	--------------

ELECTRICAL REQUIREMENTS

Approx. A load (amps)
(1) 120V 20A circuit req'd

UL labels required away from public view.

IMPORTANT NOTE

UL COMPLIANT NEC AND MANUFACTURING RECOMMENDATIONS, ALL ELECTRICAL PRIMARY CIRCUITS MUST BE DEDICATED ISOLATED CIRCUITS PROVIDED BY CLIENT/ OWNER.

GC TO PROVIDE ACCESSIBILITY TO REMOTE TRANSFORMERS AND OR BALLASTS FOR INSTALL AND SERVICE.

FINAL ELECTRICAL HOOK UP BY OTHERS.

THIS SIGN IS INTENDED TO BE INSTALLED IN ACCORDANCE WITH THE REQUIREMENTS AS PER NEC 2016 ART: 600.6 FBC ELECTRIC CODE AND/OR OTHER APPLICABLE LOCAL CODES. THIS INCLUDES PROPER GROUNDING AND BONDING OF SIGN.



PS 127:1

PROJECT

CLIENT

JOB / DRAWING #



WEST COAST HQ.
2231 S. Dupont Drive
Anaheim, CA 92806
800-655-9972

Project Name: PINK TACO / BOSTON

Address: 374 Congress St.

City, State, Zip: Boston, MA 02210

Client Approval:

Landlord Approval:

Designer: Trong T.

Sales: Chris D.

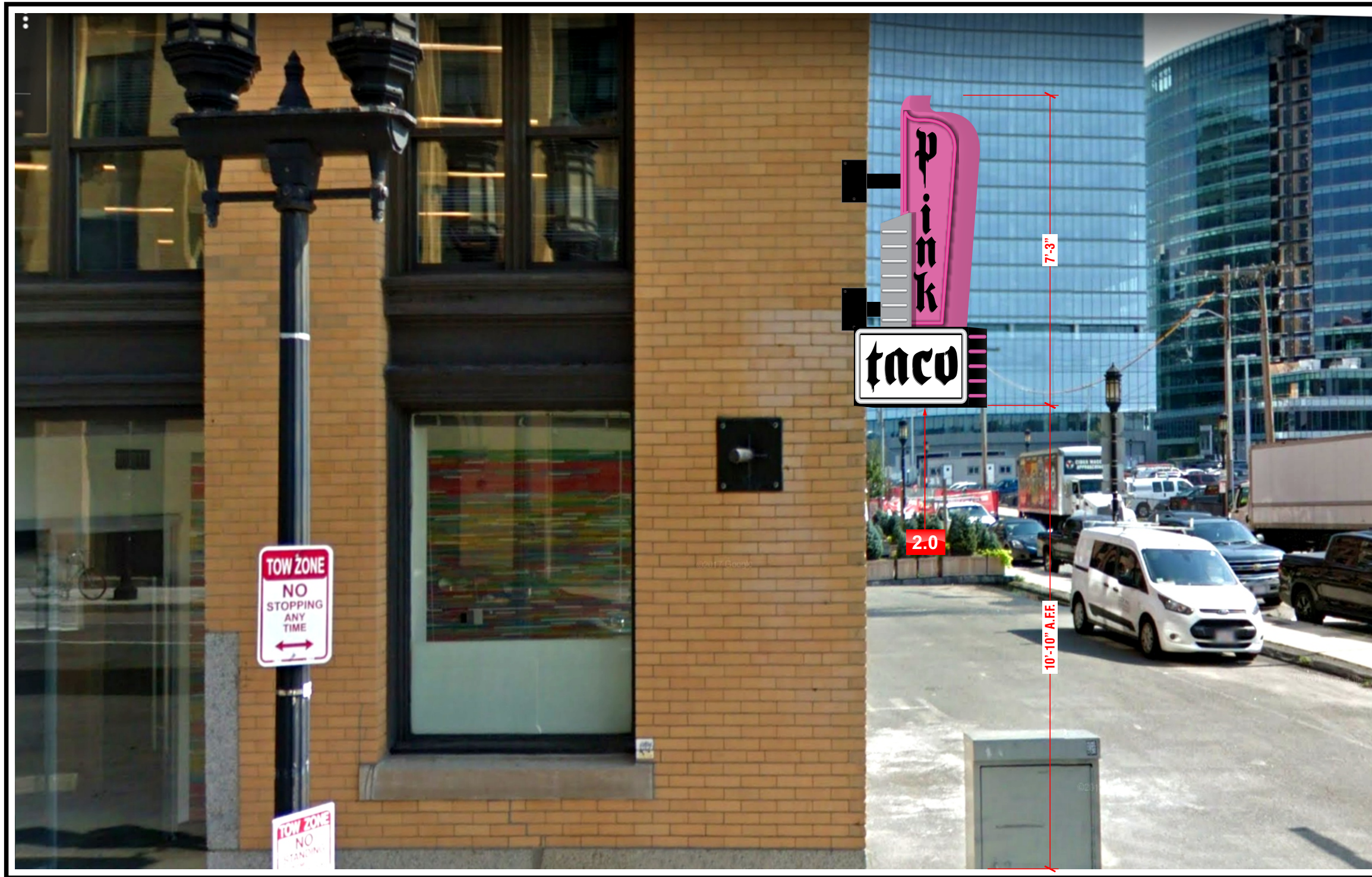
All ideas, designs, arrangements, and plans indicated or represented by this drawing are owned by and the property of Signage-Solutions, and were created, evolved and developed for use on and in connection with the specified project. None of such ideas, designs, arrangements or plans shall be used by or disclosed to any person, firm or corporation for any purpose what so ever without written permission.

#	Designer:	Date:	Revision Notes:
1	Trong T.	05/10/18	
2			
3			
4			
5			
6			
7			
8			
9			
10			



171128-01

Page 4 of 7



CONCEPTUAL PHOTO RENDERING

Scale: 3/8" = 1'-0"



WEST COAST HQ.
2231 S. Dupont Drive
Anaheim, CA 92806
800-655-9972

Project Name: PINK TACO / BOSTON

Address: 374 Congress St.

City, State, Zip: Boston, MA 02210

Client Approval:

Landlord Approval:

Designer: Trong T.

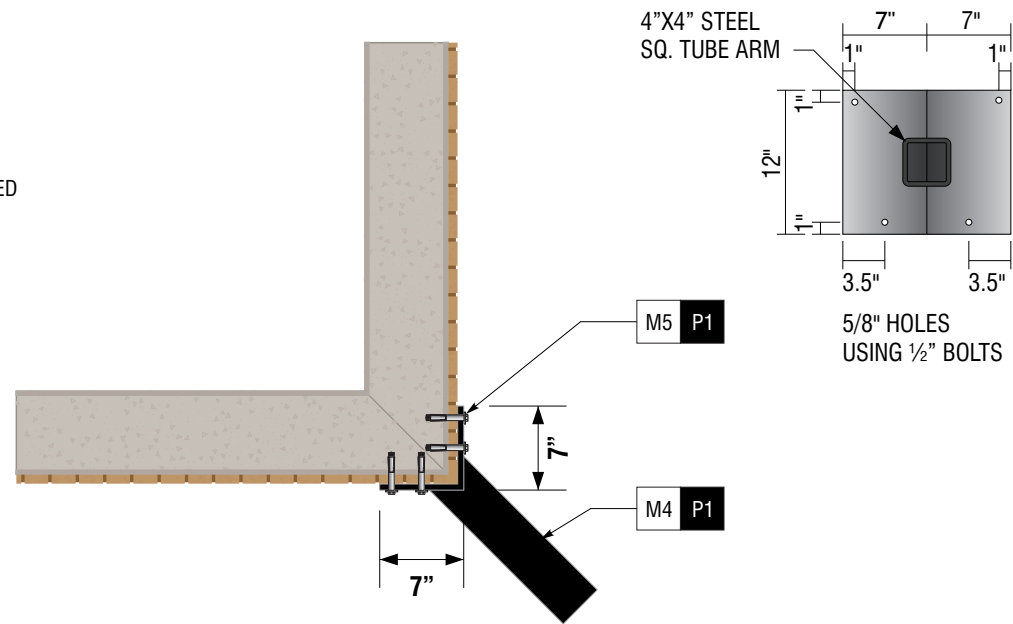
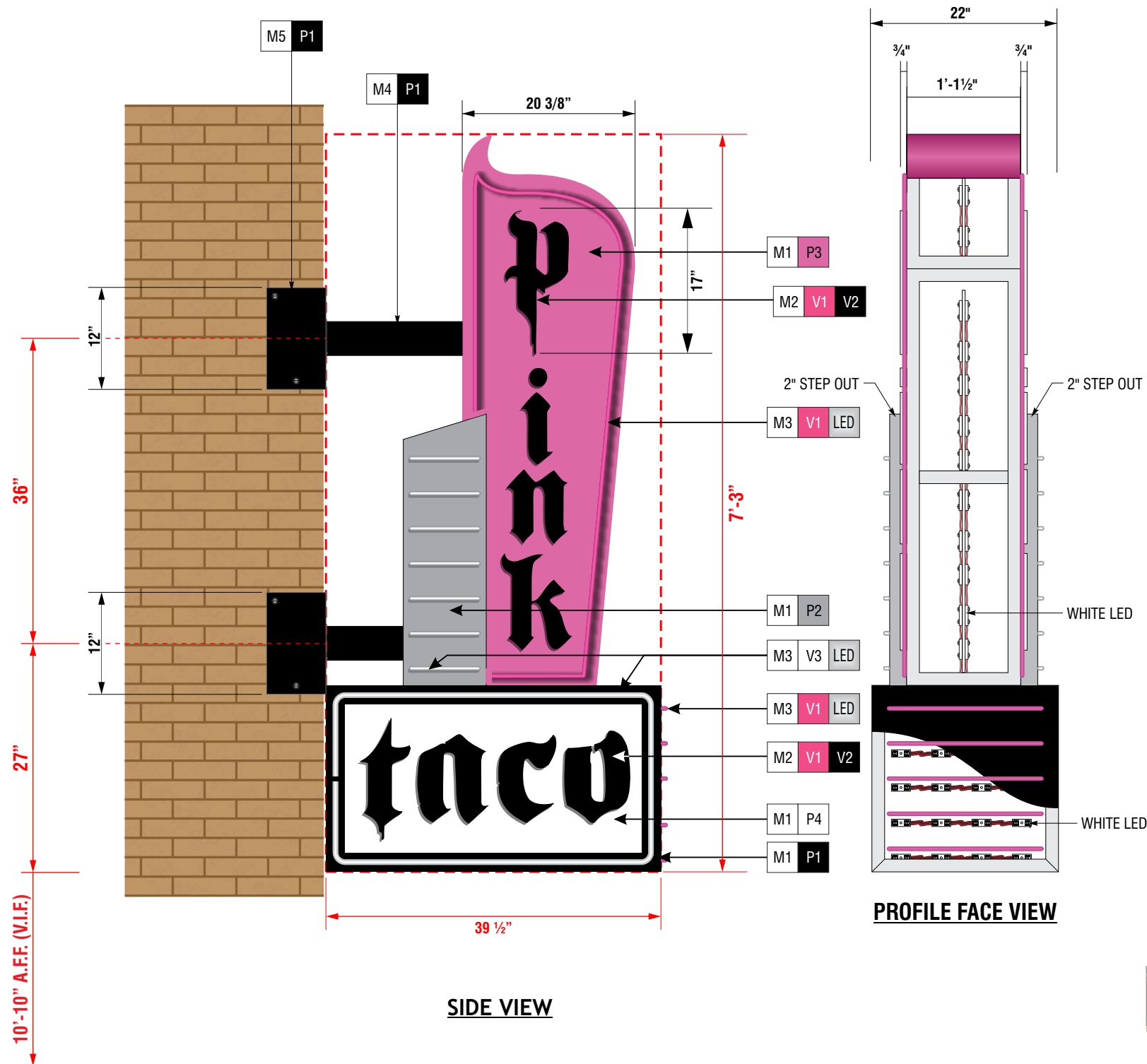
Sales: Chris D.

All ideas, designs, arrangements, and plans indicated or represented by this drawing are owned by and the property of Signage-Solutions, and were created, evolved and developed for use on and in connection with the specified project. None of such ideas, designs, arrangements or plans shall be used by or disclosed to any person, firm or corporation for any purpose what so ever without written permission.

#	Designer:	Date:	Revision Notes:
1	Trong T.	05/10/18	
2			
3			
4			
5			
6			
7			
8			
9			
10			



171128-01



SQUARE FOOTAGE	
23.86 SQ. FT. PROPOSED	
MATERIALS	
M1	.080 ALUM MARQUEE ENCLOSURE
M2	3/4" CLEAR ACRYLIC PUSH THRU
M3	3/4" FAUX NEON TRIM
M4	4" STEEL SQ TUBE
M5	1/2" STEEL MOUNTING PLATE
PAINT FINISH	
P1	BLACK
P2	MATTHEWS BRUSHED ALUM
P3	PINK
P4	WHITE
VINYL	
V1	PINK TRANSLUCENT VINYL 2ND SURFACE
V2	BLACK OPAQUE VINYL 1ST SURFACE
V3	WHITE VINYL 2ND SURFACE
ILLUMINATION	
LED	WHITE L.E.D.
IMPORTANT NOTE	
UL COMPLIANT NEC AND MANUFACTURING RECOMMENDATIONS. ALL ELECTRICAL PRIMARY CIRCUITS MUST BE DEDICATED ISOLATED CIRCUITS PROVIDED BY CLIENT/ OWNER.	
GC TO PROVIDE ACCESSIBILITY TO REMOTE TRANSFORMERS AND OR BALLASTS FOR INSTALL AND SERVICE.	
FINAL ELECTRICAL HOOK UP BY OTHERS.	
THIS SIGN IS INTENDED TO BE INSTALLED IN ACCORDANCE WITH THE REQUIREMENTS AS PER NEC 2016 ART: 600.6 FBC ELECTRIC CODE AND/OR OTHER APPLICABLE LOCAL CODES. THIS INCLUDES PROPER GROUNDING AND BONDING OF SIGN.	
ELECTRICAL REQUIREMENTS	
Approx. A load (amps) (1) 120V 20A circuit req'd	
UL labels required away from public view.	

2.0 D/F MARQUEE BLADE SIGN W/PUSH THRU COPY & FAUX NEON ACCENTS

Scale: 3/4" = 1'-0"

NOTE: ALL MEASUREMENTS TO BE VERIFIED

SIGNAGE SOLUTIONS
 WEST COAST HQ.
 2231 S. Dupont Drive
 Anaheim, CA 92806
 800-655-9972

Project Name: PINK TACO / BOSTON
 Address: 374 Congress St.
 City, State, Zip: Boston, MA 02210

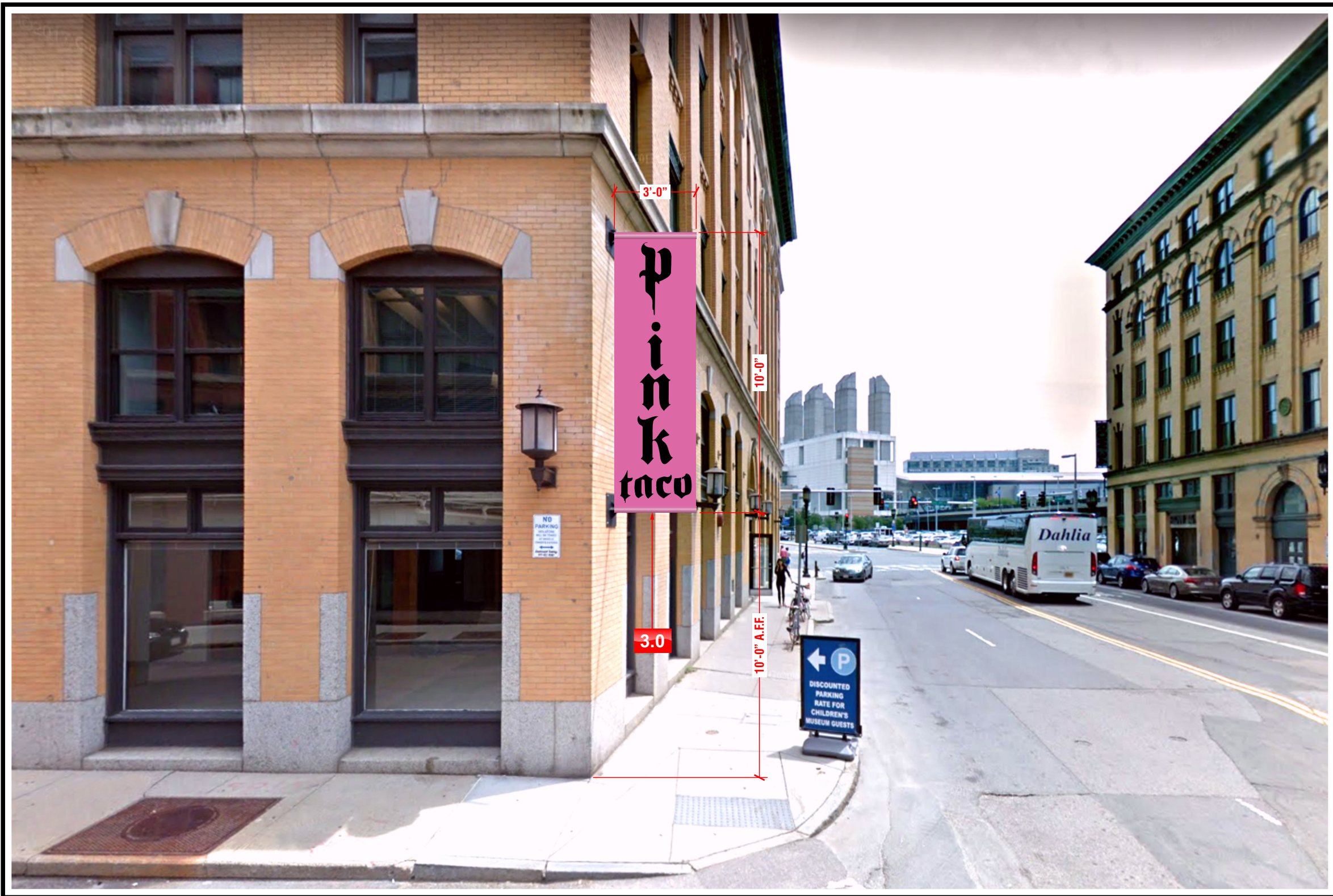
Client Approval:
 Landlord Approval:
 Designer: Trong T. Sales: Chris D.

All ideas, designs, arrangements, and plans indicated or represented by this drawing are owned by and the property of Signage-Solutions, and were created, evolved and developed for use on and in connection with the specified project. None of such ideas, designs, arrangements or plans shall be used by or disclosed to any person, firm or corporation for any purpose what so ever without written permission.

#	Designer:	Date:	Revision Notes:
1	Trong T.	05/10/18	
2			
3			
4			
5			
6			
7			
8			
9			
10			

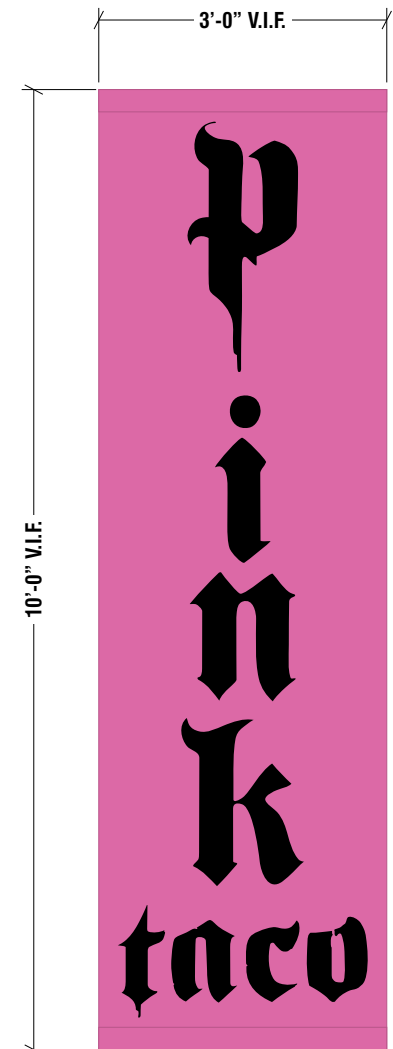
pink taco 171128-01
 Page 6 of 7





CONCEPTUAL PHOTO RENDERING

Scale: 1/4" = 1'-0"



3.0 D/F NON-ILLUMINATED FLAG MOUNTED SIGN
Scale: 1/2" = 1'-0"

NOTE: ALL MEASUREMENTS TO BE VERIFIED

SQUARE FOOTAGE	
30 SQ. FT. PROPOSED	
MATERIALS	
M1	14 Oz. VINYL BANNER
DIGITAL PRINTS	
D1	PINK
D2	BLACK



WEST COAST HQ.
2231 S. Dupont Drive
Anaheim, CA 92806
800-655-9972

Project Name: PINK TACO / BOSTON

Address: 374 Congress St.

City, State, Zip: Boston, MA 02210

Client Approval:

Landlord Approval:

Designer: Trong T.

Sales: Chris D.

All ideas, designs, arrangements, and plans indicated or represented by this drawing are owned by and the property of Signage-Solutions, and were created, evolved and developed for use on and in connection with the specified project. None of such ideas, designs, arrangements or plans shall be used by or disclosed to any person, firm or corporation for any purpose what so ever without written permission.

#	Designer:	Date:	Revision Notes:
1	Trong T.	05/10/18	
2			
3			
4			
5			
6			
7			
8			
9			
10			



171128-01



View 10 A



View 11 A

Torres Architects Inc.



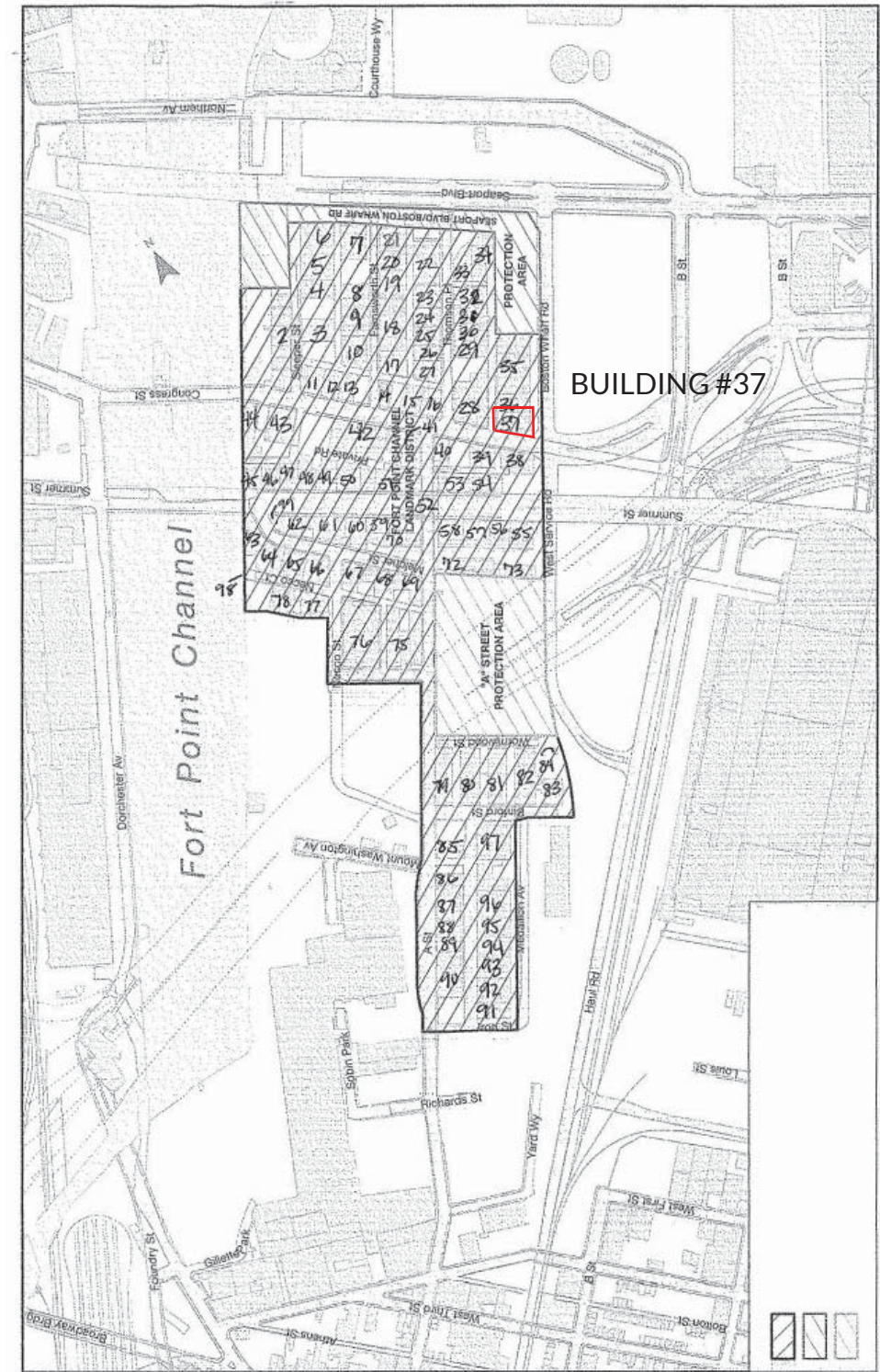
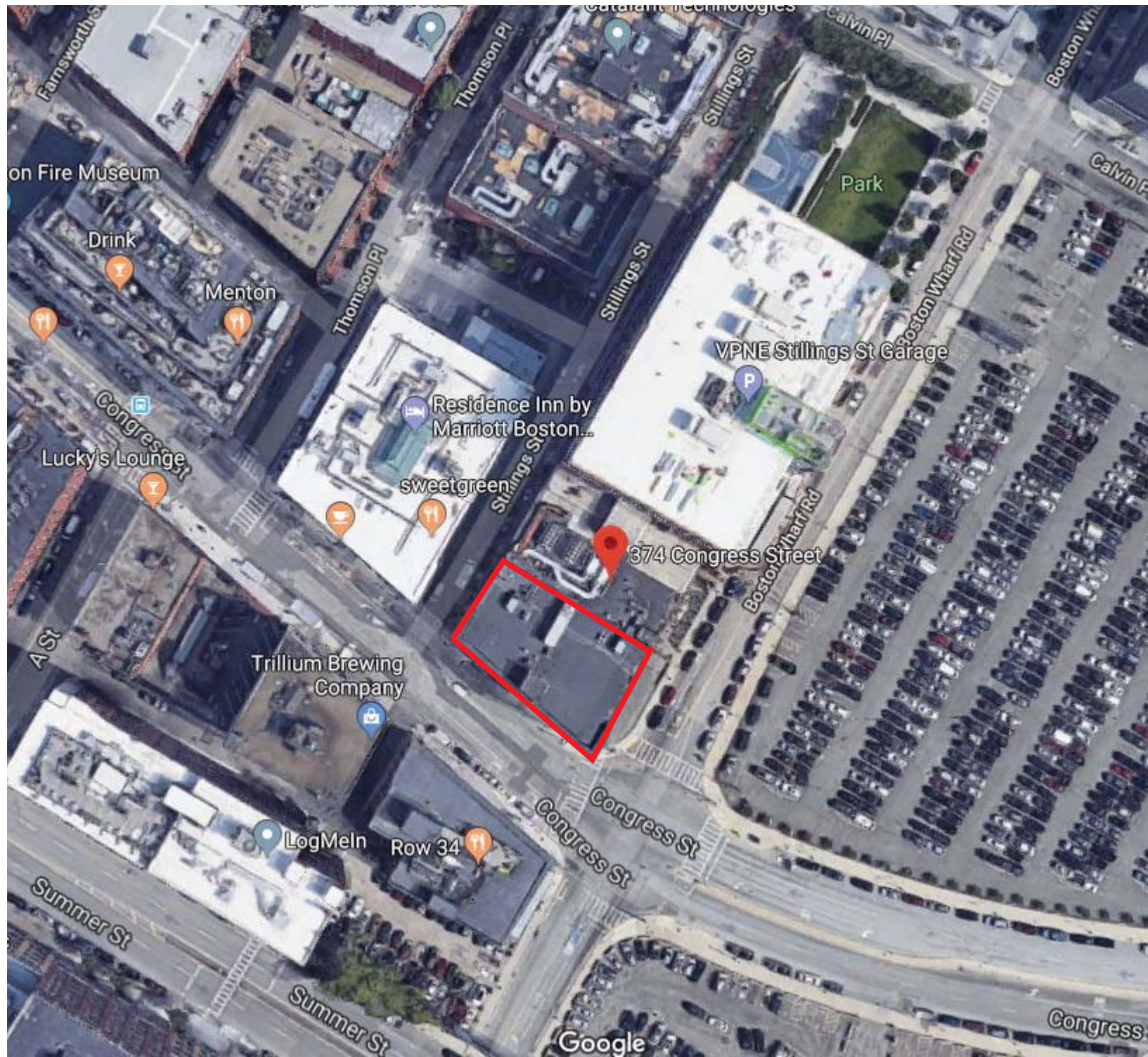
View 14

Torres Architects Inc.



View 14

Torres Architects Inc.



pink taco
374 CONGRESS ST

SITE PLAN

Whitlock
DESIGN GROUP

TORRES ARCHITECTS, INC



pink taco
374 CONGRESS ST

EXISTING PHOTOS

Whitlock
DESIGN GROUP
TORRES ARCHITECTS, INC



pink taco
374 CONGRESS ST

EXISTING PHOTOS

Whitlock
DESIGN GROUP
TORRES ARCHITECTS, INC



pink taco
374 CONGRESS ST

NEIGHBORING
CONTEXT PHOTOS

Whitlock
DESIGN GROUP
TORRES ARCHITECTS, INC



pink taco
374 CONGRESS ST

HISTORIC PHOTOS

Whitlock
DESIGN GROUP

TORRES ARCHITECTS, INC