

PHOTOS OF EXISTING SIGNAGE



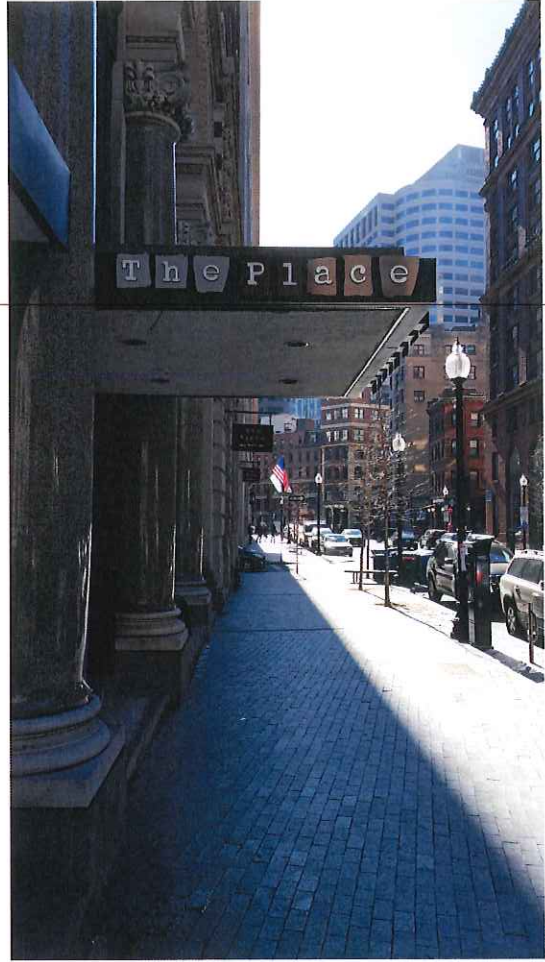
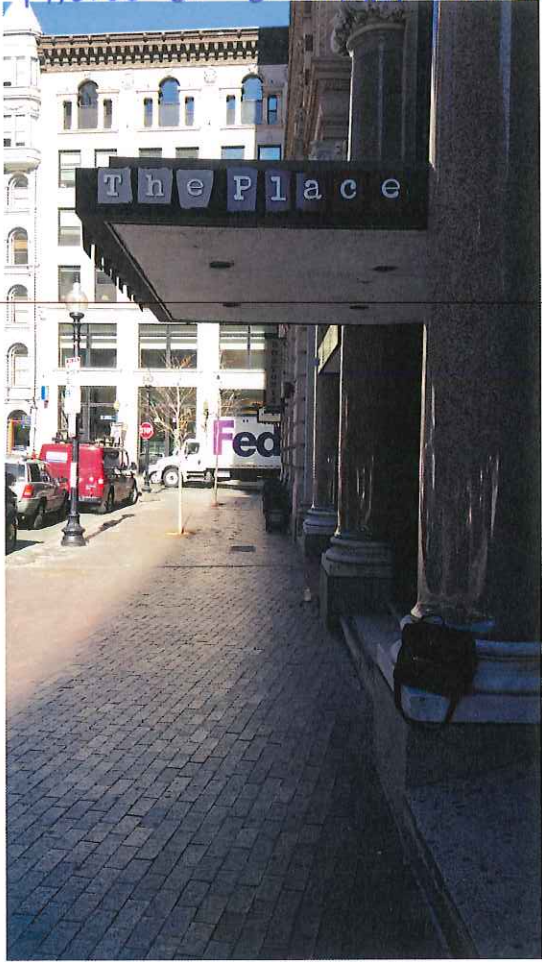
CANOPY  
(3-SIDED)

(2) BLADE SIGNS

PHOTOS OF EXISTING SIGNAGE



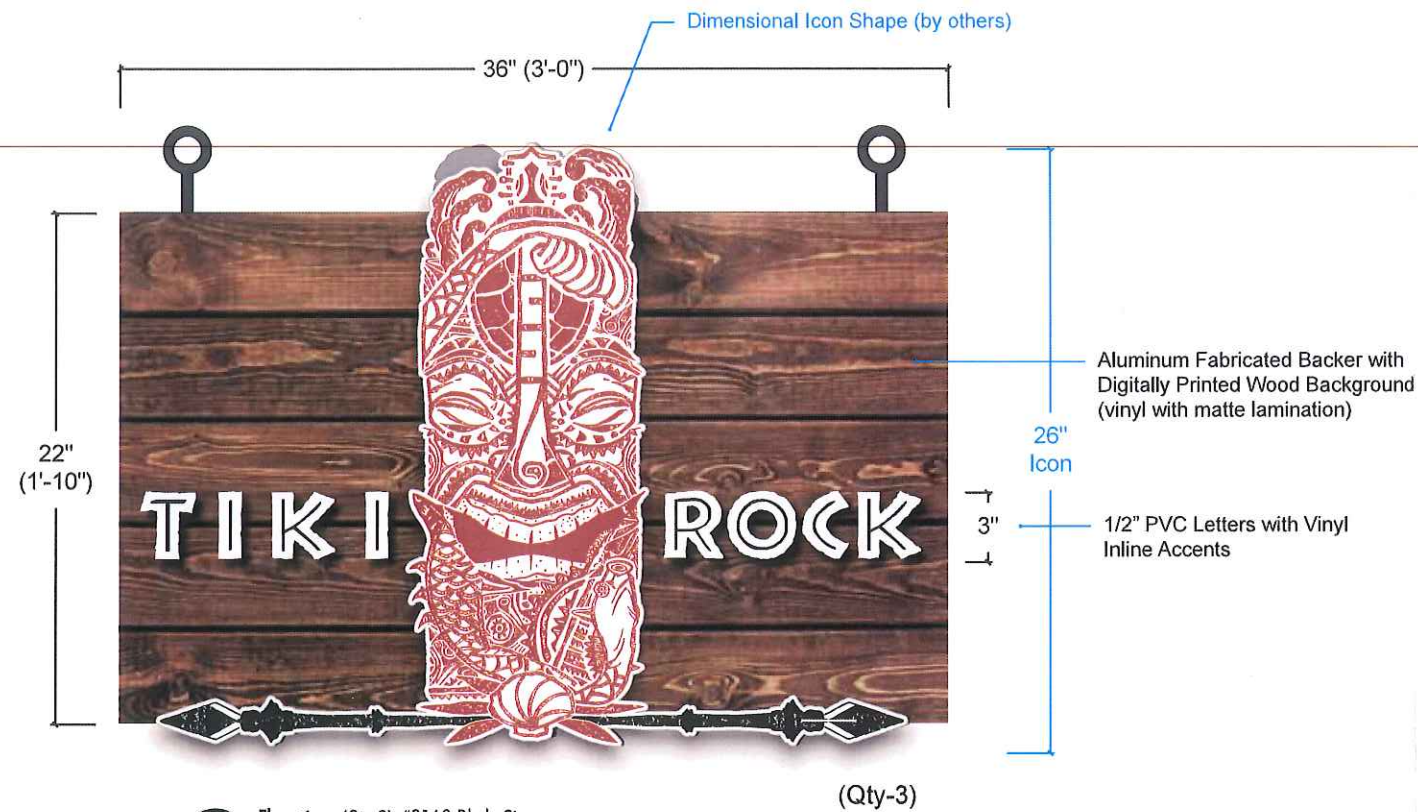
PHOTOS OF EXISTING SIGNAGE



PHOTOS OF EXISTING SIGNAGE



2-Sided Dimensional Blade Sign Panel Replacements



**E1** Elevation: (Qty-3) #9169 Blade Signs  
Scale: 1 1/2"=1'

All Measurements (VIF)

\* External Illumination (by others)



Proposed Location 1 of 3



\* External Illumination Location (by others)



Existing

Job:  
Tiki Rock  
Location:  
2 Broad St. Boston, MA

Account Manager:  
Jeff Kwass  
File:  
TikiRock\_Boston\_BladeSigns\_1d.ai

Date:  
11.29.17 .75  
Designer:  
Steven Manna

Revisions:  
12.06.17 1.25  
01.30.18 .5  
02.07.18 .25

Revisions:

THIS PROPOSAL DRAWING CONTAINS ORIGINAL ELEMENTS  
CREATED BY VIEWPOINT SIGN AND AWNING. ALL RIGHTS RESERVED.  
UNAUTHORIZED DUPLICATION OR REPRODUCTION IS PROHIBITED.

**ViewPoint** 1.508.393.8200  
SIGN AND AWNING FAX 1.508.393.4244

Customer Approval

Acct. Manager Approval

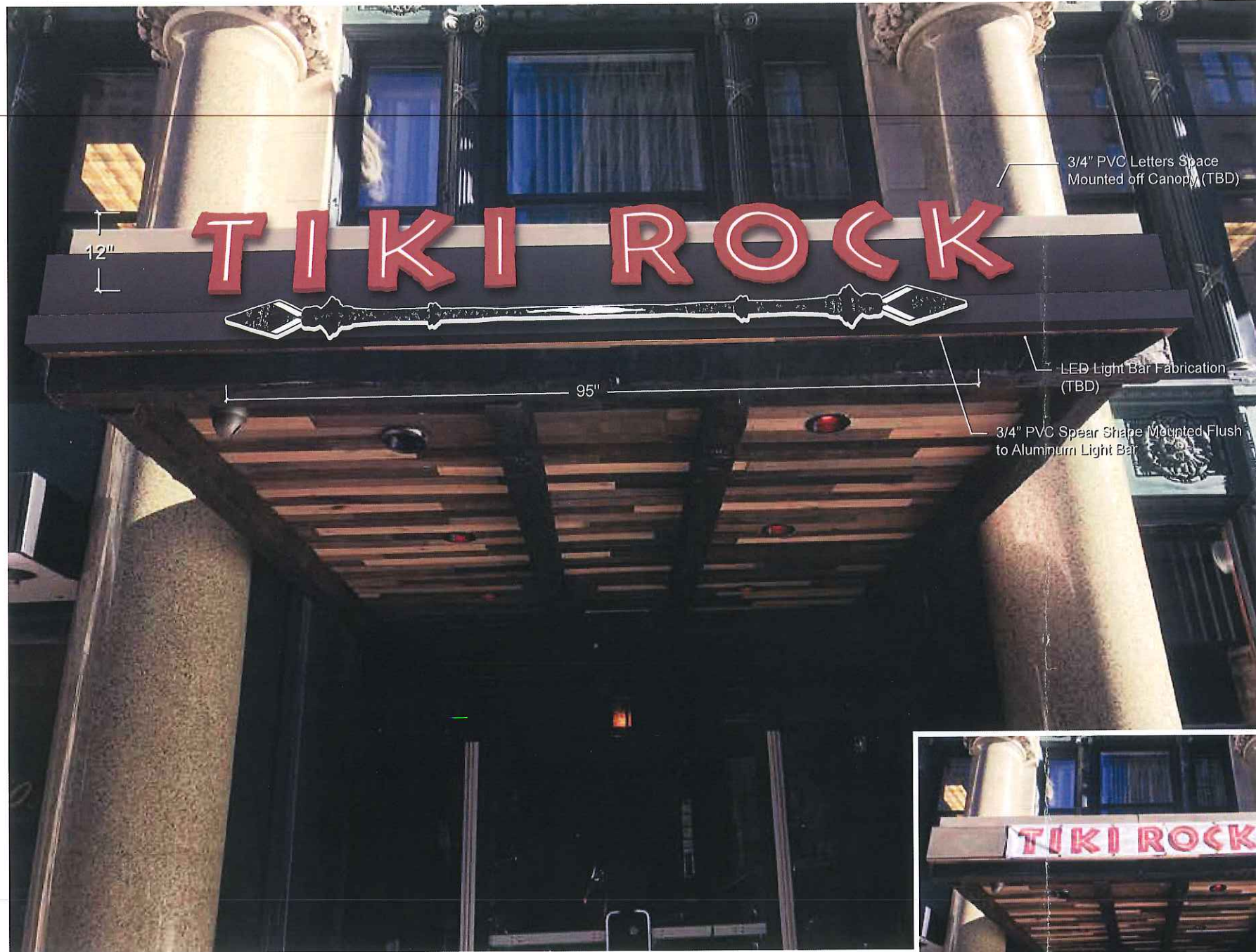
Production Approval

Concept

Dimensional Letters & Spears Added to Front & Sides of Existing Canopy

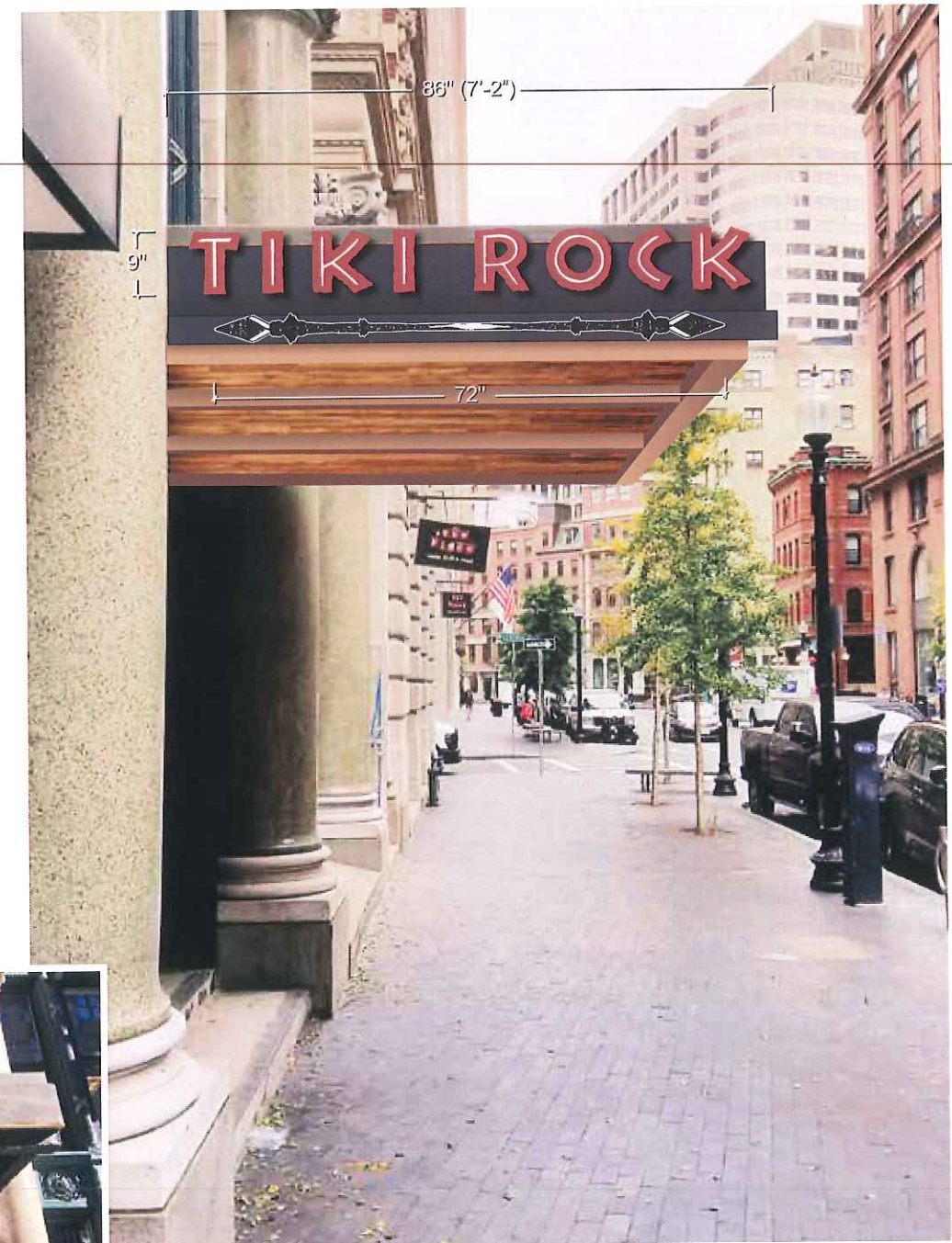
Proposed

Front



Proposed

Side 1 of 2



Existing

Existing

E1 Elevation: #9169 Front, Left & Right Sides of Canopy  
Scale: NTS

All Measurements (VIF)

Job:  
Tiki Rock  
Location:  
2 Broad St. Boston, MA

Account Manager:  
Jeff Kwass  
File:  
TikiRock\_Boston\_CanopySign\_1c.ai

Date:  
11.28.17 2  
Designer:  
Steven Manna

Revisions:  
12.06.17 1.5  
01.30.18 .75

Revisions:

THIS PROPOSAL DRAWING CONTAINS ORIGINAL ELEMENTS  
CREATED BY VIEWPOINT SIGN AND AWNING. ALL RIGHTS RESERVED.  
UNAUTHORIZED DUPLICATION OR REPRODUCTION IS PROHIBITED.

**ViewPoint**  
SIGN AND AWNING

1.508.393.8200  
FAX 1.508.393.4244

Customer Approval

Acct. Manager Approval

Production Approval

Concept