

ART WALL

10 FARNSWORTH STREET
FORT POINT - BOSTON

x

Tomek Sadurski

art wall

10 FARNSWORTH STREET, FORT POINT - BOSTON

CONCEPT WORK

DESCRIPTION

TECHNICAL DRAWING

MATERIAL & PRODUCTION

COST ESTIMATE

tides

An abstract composition inspired by the movements of water.

An organic structure of particles tuned and directed by a celestial body.

The direction and density of waves create a drawing, that besides being a representation of a natural phenomena symbolizes the history of the city area founded on water grounds and developing throughout 2 centuries with its peaks, lows and upheavals.

the circle represents the point of convergence of past and the future, nature and the city, water and solid ground and a new lively area of the city in historic fundamentals

the hand drawn and computer generated elements has been created with a random parameter.

The seemingly chaotic, flowing pattern is created with bold drawing and painting techniques (incl. woodcut & monotype print) and the initial sketch digitaly modified with random parameters. The structures echoe the force of nature in the urban environment.

Mix of natural and graphic motifs is composed and woven into a dynamic pattern that allows the eye wondering through a detailed abstract world

The colour code: monochromatic, black and white.

The monumental forms & detailed structures invite the viewer to a contemplation, analysis, while creating another bigger picture from distance . The aim is to create detailed and stylized composition to connect the natural with the urban and play with perception of close and far.

tides: the rise and fall of sea levels caused by the combined effects of the gravitational forces exerted by the Moon and the Sun and the rotation of Earth.

art wall

10 FARNSWORTH STREET, FORT POINT - BOSTON

CONCEPT WORK

tides

NATURAL ± URBAN
LIGHT LINES ± BOLD SHAPES
FRAGILE ± ROBUST
DETAILED ± MASSIVE
SYMBOLIC ± SCIENTIFIC
EPHEMERAL ± DURABLE
PRIMAL ± HIGH TECH

BOSTON IN 1880,
SHOWING HORSE RAILROADS.



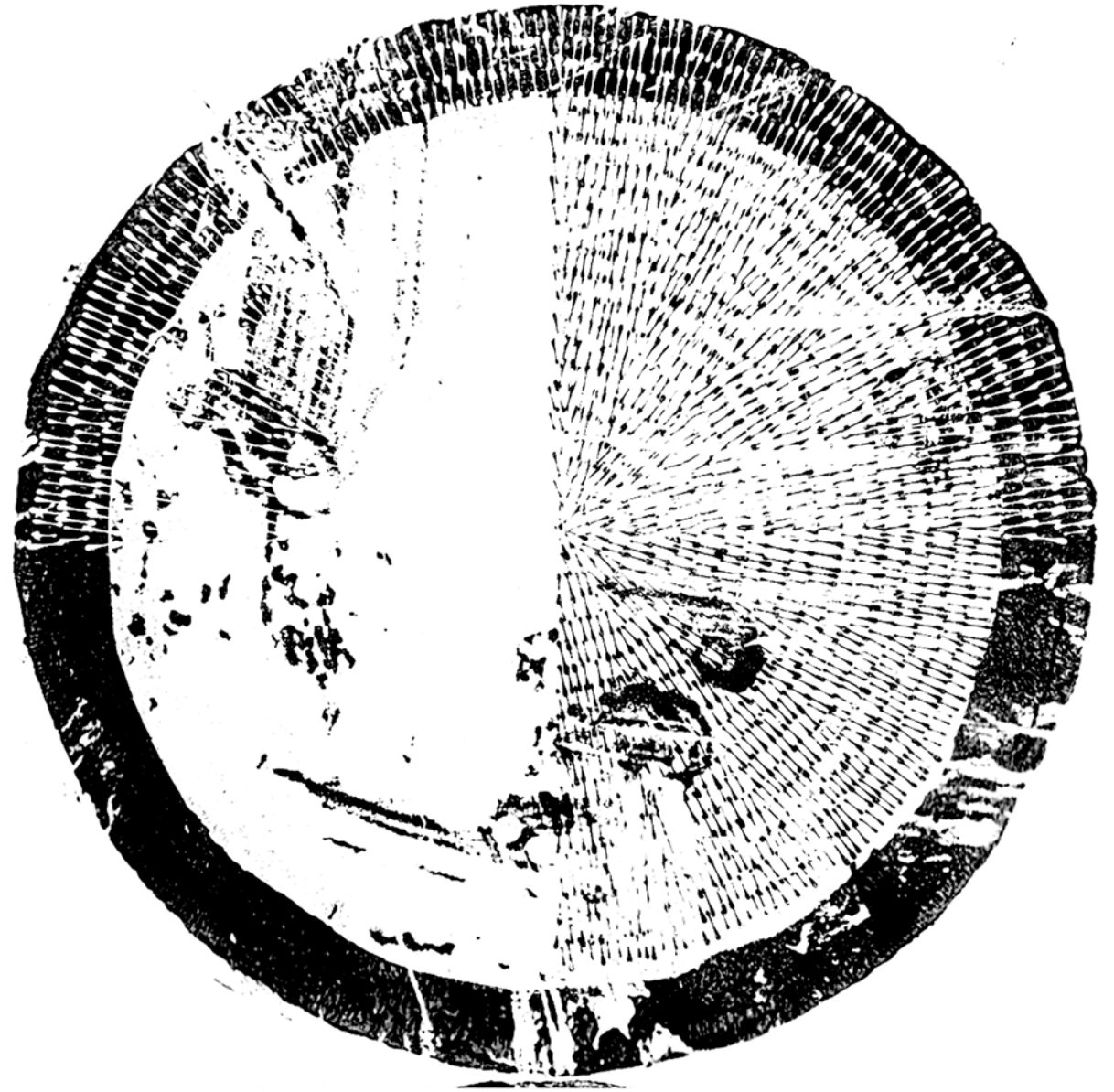
TO BE SOLD by RALPH INMAN at his
Warehouse on Belcher's Wharf,
Ordage of all sizes, English Duck and Sole-Leather,
Bear-skins, scarlet and coloured Ratteens, scarlet and blue Broad-
Cloths, Men's and Women's Lamb and Kid Gloves, Leather
Breeches, Sheet Copper of all sizes, with Caps and Bottoms for Stills,
Tea-kettles, Coffee-pots, Sauce-pans, &c. by the Quantity; Cask and
Bottled Beer, with a Variety of other Goods.



research

A black and white photograph of a textured surface, possibly water or a rough material, with the text "FORT POINT" centered in white. The texture consists of small, irregular ripples and creases, creating a complex, organic pattern. The lighting is even, highlighting the subtle variations in the surface's topography.

FORT POINT



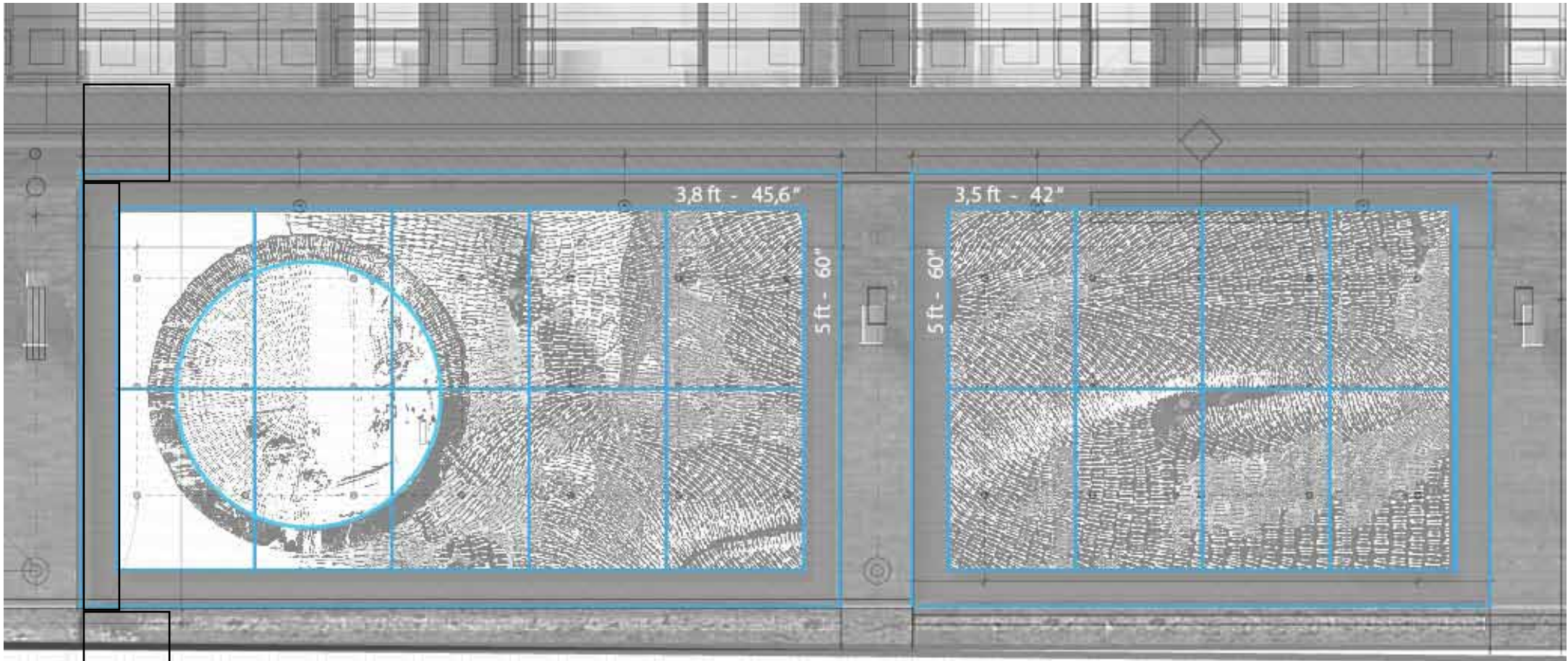
concept work
& composition







the look

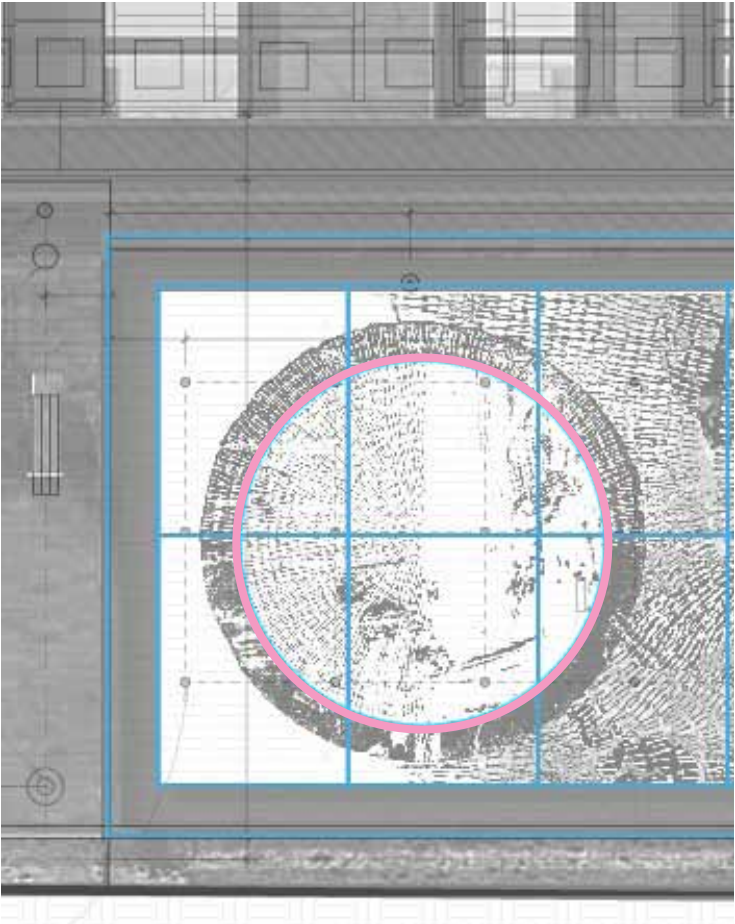


circle panel: 7ft diameter

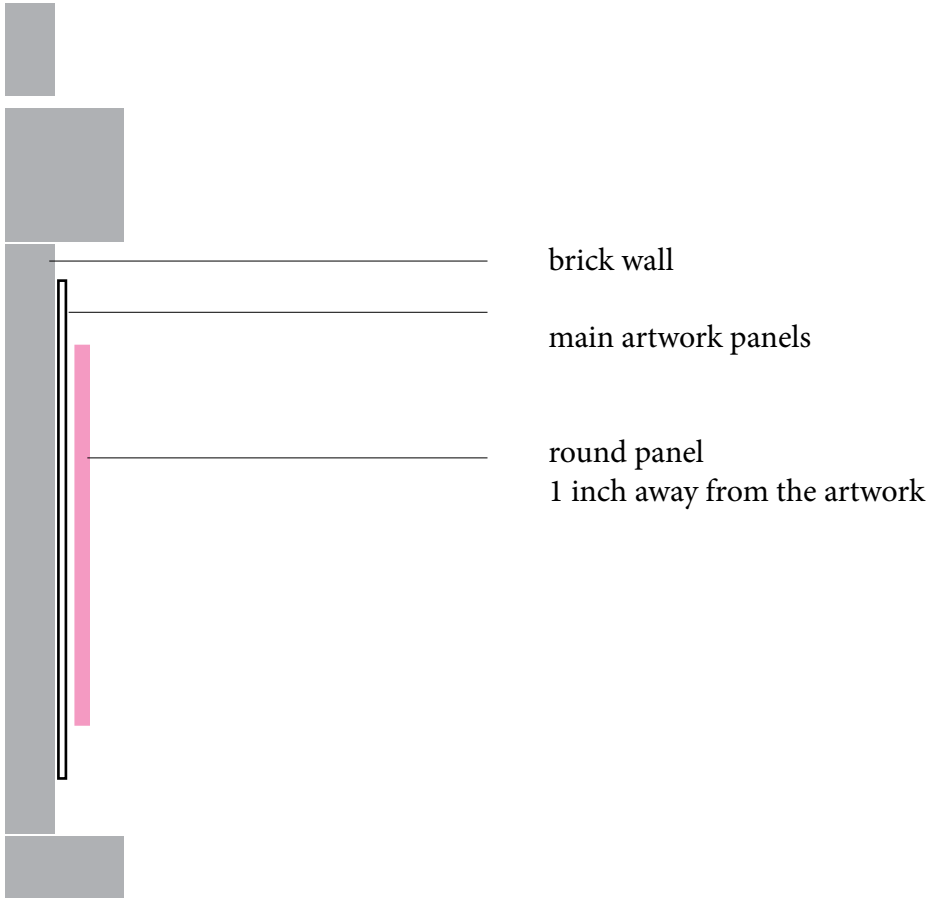
RIGHT WALL (21 x 12 ft) 10 panels
panel size:
5 ft x 3,8 ft
60" x 45,6"
19 sqft

LEFT WALL (16 x 12 ft) 8 panels
panel size:
5 ft x 3,5 ft
60" x 42"
17,5 sqft

CIRCLE PANEL



RIGHT WALL (21 x 12 ft) 10 panels
panel size:
5 ft x 3,8 ft
60" x 45,6"
19 sqft



circle panel: 7ft diameter

THE DESIGN PROPOSAL & TECHNICAL SPECIFICATION.

I will paint panels in my studio in Boston and then have them delivered and installed to the site. As I will be doing all the painting in my studio, I can install the panels in the winter if needed.

MATERIALS

PANELS

Im planning on using ALPOLIC® ACM (aluminium composite material) panels, 1/4“(thick). These panels are extremely rigid, light weight and durable. They are designed specifically for exterior use.

An additional aluminium circle will be added on top of the mural with a 1” distance from the main panel, adding depth and structure to the artwork.

A 1 ft border of brick will be kept free and exposed all the way around the finished piece.

Amount of panels needed:

RIGHT WALL 10 panels
panel size: 5 ft x 3,8 ft
60” x 45,6”
19 sqft

LEFT WALL 8 panels
panel size: 5 ft x 3,5 ft
60” x 42”
17,5 sqft

Additional circle panel: 7ft diameter

The panels will be attached 1” away from the wall, the metal circle will be 1” away from the panels for the relief and each panel is 1/4” thick. TOTAL depth 2,5” within the 3” guideline.

The panels are fabricated with a 10 year manufactures warranty powder matt coating.

The artwork will be painted with acrylic latex Benjamin More Exterior Paint: Low Lustre (542) 100% Acrylic Latex in black & white. This paint is manufactured for heavy weather/ duty outdoor use, with a 25 year manufacturers warranty.

The panels will be fastened with approx. 80 HILTI brick fasteners: 4 per panel and 8 for the circle. Exact fastening to be confirmed with architect and engineers.



ARTWORK

PAINT



ANCHORS

PRODUCTION

TIME

I will need 4 weeks to paint the panels in my studio.

2 days are needed to install the panels and fasten them to the brick.

Total project time from order will be up to 5 week time plus initial 2 weeks lead time for the cutting and delivery of the panels

The project can be completed in the winter or spring at the developers choice

WARRANTY

Panels have minimum 10 year warranty

The coating has minimum 10 year warranty

Benjamin More Exterior Acrylic Latex Paint: 25 year warranty

I will provide 10 years touch up warranty

I can prepare a mockup with the listed materials, which i can present at your convenience

MATERIAL

LINKS

www.alpolic-americas.com

<http://www.alpolic-americas.com/samples/?corporate-id=&colors=&finishes=&pg=3>

<https://www.benjaminmoore.com>

www.benjaminmoore.com/en-us/interior-exterior-paints-stains/product-catalog/bwep/ben-exterior-paint

COST ESTIMATE

MATERIALS:

PANELS	ALPOLIC® ACM (aluminium composite materials) panels 1/4" thick	4.440,-
PAINT	Ben more Low Lustre 100% Acrylic Latex White Ben more Low Lustre (542) 100% Acrylic Latex Charcoal Black	200,- USD
ANCHORS	78 HILTI brick fasteners: 4 per panel	1000,- USD estimate tbd with an architect & engineer
INSTALLATION	2 people x 2 day	1.600,- USD
PACKAGING AND DELIVERY	packing and transporting the panels to the site	2.500 USD
FINAL DESIGN	finalizing and correctioins	3.500,- USD
PAINTING	production	5000,- USD
	TOTAL COST:	18.240,- USD

ARTWORK MAINTENANCE

retouch and maintenance by the author on site within 45 days
the cost of travel, accomodation and maintenance work wont exceed 3.000 USD

10 years warranty to maintain and restore the artwork in case of damages



ART WALL

10 FARNSWORTH STREET
FORT POINT - BOSTON

Tomek Sadurski

.....
3508 CRESTMONT AVE, LOS ANGELES, CA 90026
LINIENSTRASSE 155, 10115 BERLIN
+1 424 394 3854 | +49 177 877 2007
INFO@TOMEKSADURSKI.COM | WWW.TOMEKSADURSKI.COM
ALL RIGHTS RESERVED | TOM EK SADURSKI © 2017
.....





CUSTOMER:
 JB Ventures

PROJECT :
 10 Farnsworth Art Panels

DATE:
 2/5/18

SCALE:
 As Noted

DRAWN BY:
 RT

WORK ORDER:

DRAWING NO:

FILE:
 Pan Shop

REVISIONS:

