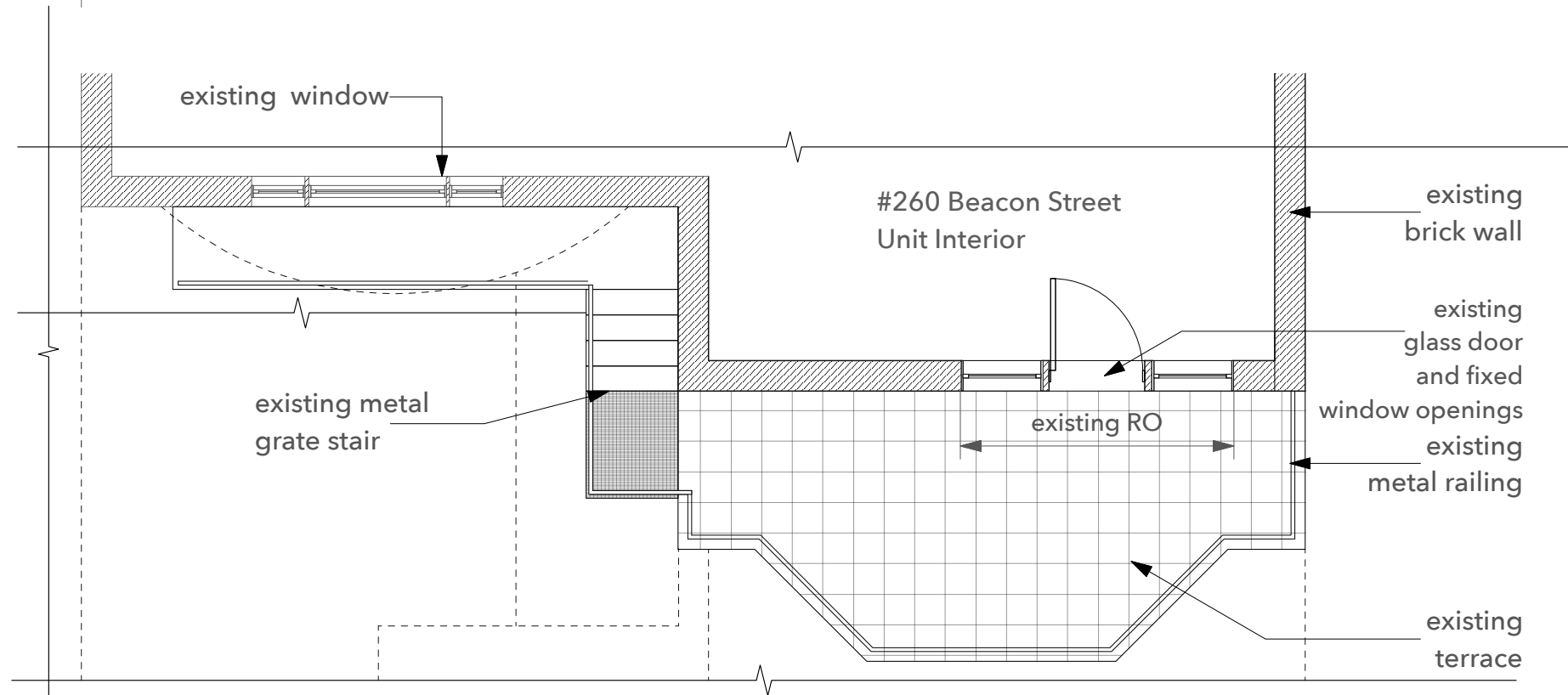


11 Existing Exterior Door & Window Elevation
Scale: 3/16" = 1'-0"



10 Existing Exterior Door & Window Plan
Scale: 3/16" = 1'-0"



existing door /window assembly



10

Existing Condition Rear Elevation View
Scale: 1/8" = 1'-0"



20

Existing Door and Fixed Window View
Scale: 1/8" = 1'-0"



Hresko Associates, Inc.
Architects, Landscape Architects
36 Bromfield Street, Suite 209
Boston, MA 02108
617-350-7666
eMail: hresko@ArchUSA.com

260 Beacon Street,
Back Bay, Boston

Existing Condition Views/Photos

Date: 12/11/17

#29-18

ExA
1.00

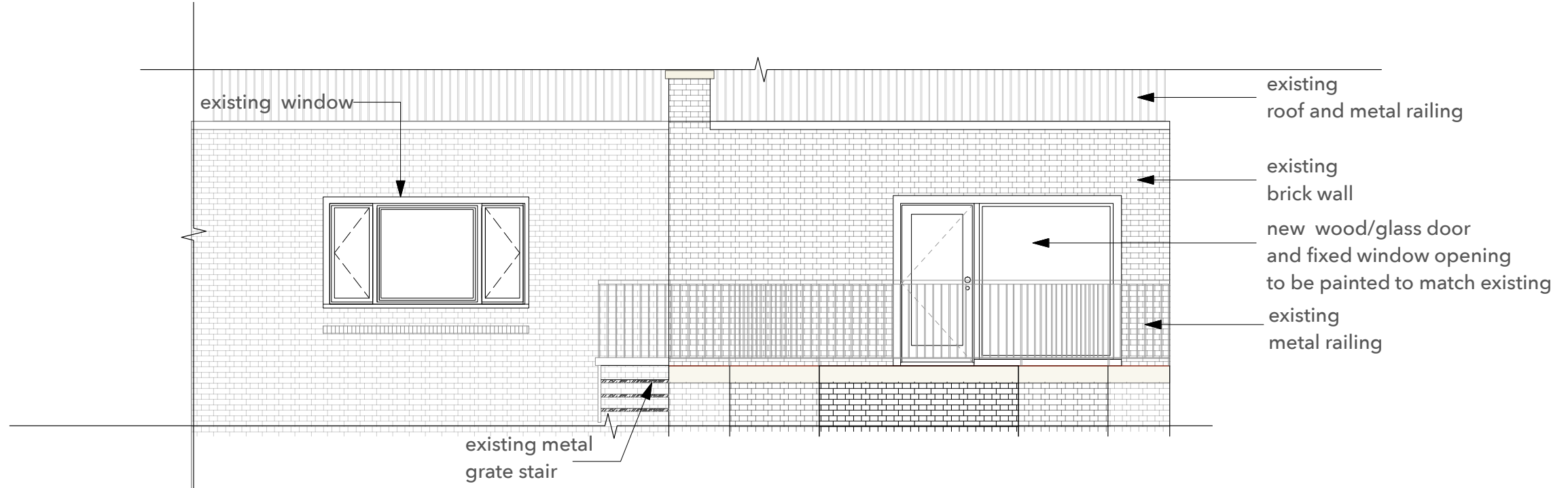
proposed door /window assembly



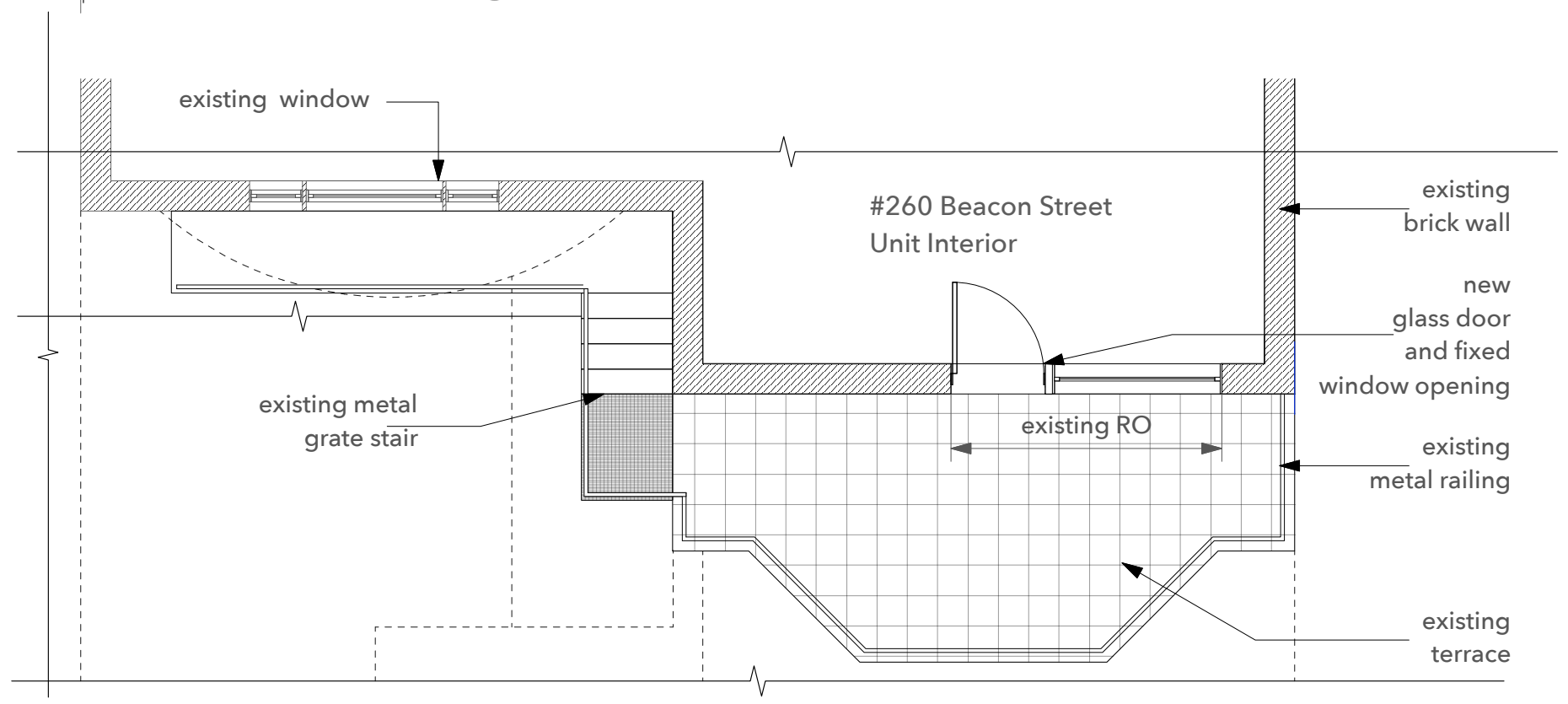
10 Proposed Condition Rear Elevation View
Scale: 1/8" = 1'-0"

20 Proposed New Door and Fixed Window View
Scale: 1/8" = 1'-0"





11 Proposed New Door & Window Elevation
Scale: 3/16" = 1'-0"



10 Proposed Door & Window Plan
Scale: 3/16" = 1'-0"



Hresko Associates, Inc.
Architects, Landscape Architects
36 Bromfield Street, Suite 209
Boston, MA 02108
617-350-7666
eMail: hresko@ArchUSA.com

**260 Beacon Street,
Back Bay, Boston**

Proposed New Ext. Door & Window
Plan/Elevation
Date: 12/11/17
Scale: As Noted

#29-18
A
1.01

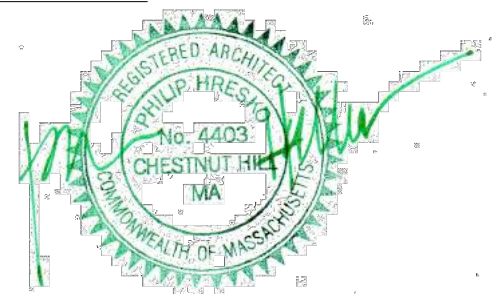
existing 4 pane window assembly



10 Existing Condition Front Elevation View
Scale: 1/8" = 1'-0"



20 Existing Street View corner of Beacon & Exeter Street
Scale: 1/8" = 1'-0"



proposed 3 pane window assembly



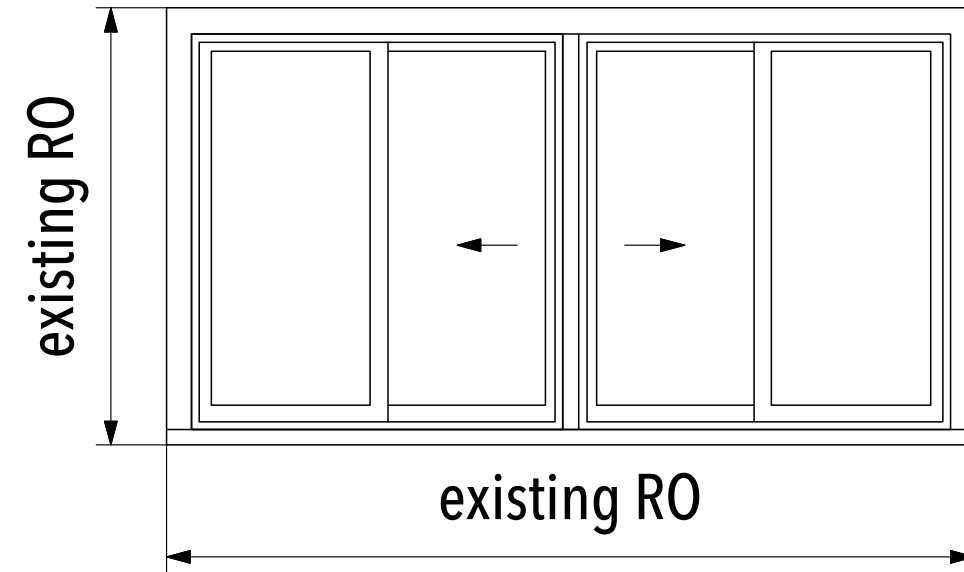
Notes:
Replace (3) existing 4 pane
with (3) 3 pane window assembly.
New wood windows to be painted
to match existing.
See specification provided
by manufacturer.



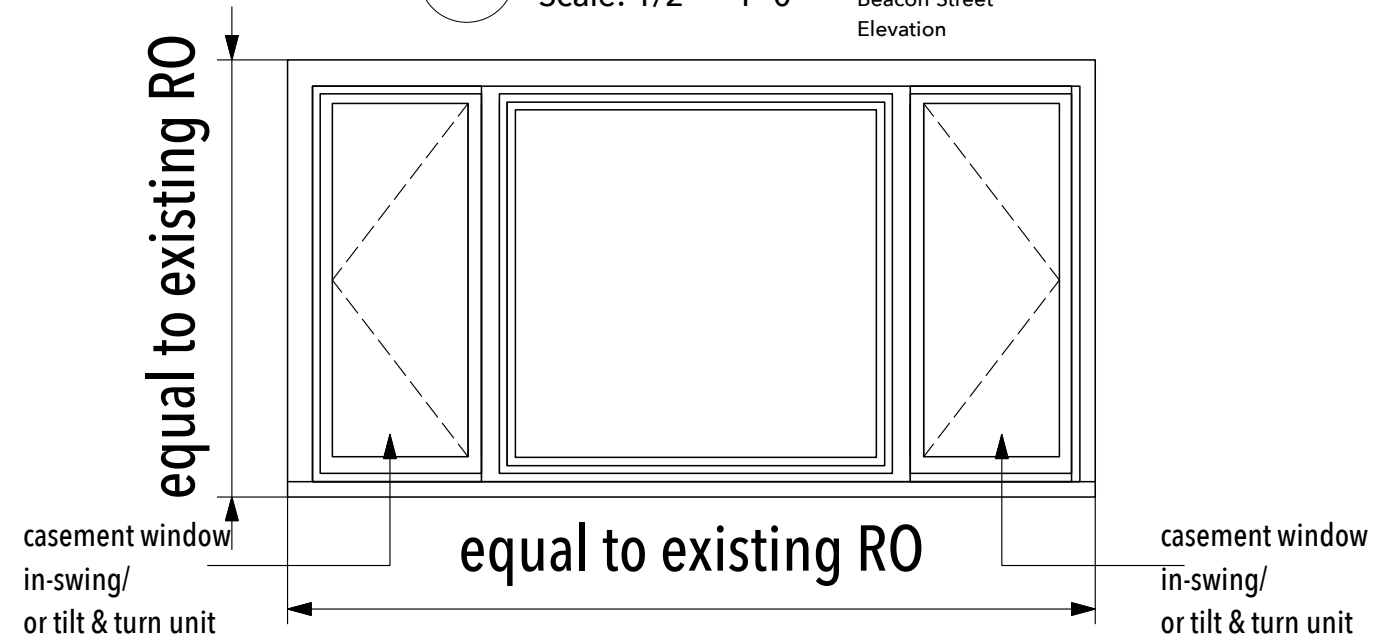
10 Proposed Condition Front Elevation View
Scale: 1/8" = 1'-0"

20 Proposed Street View corner of Beacon & Exeter Street
Scale: 1/8" = 1'-0"





11 Existing Window Elevation
 Scale: 1/2" = 1'-0" Beacon Street Elevation



10 Proposed Window Elevation
 Scale: 1/2" = 1'-0" Beacon Street Elevation

Notes:
 Install (3) new wood windows to be painted to match existing.
 See specifications from window manufacturer.

example of similar window configuration
in adjacent building



10

Example of similar windows as the proposed in adjacent building
Scale: 1/8" = 1'-0"

