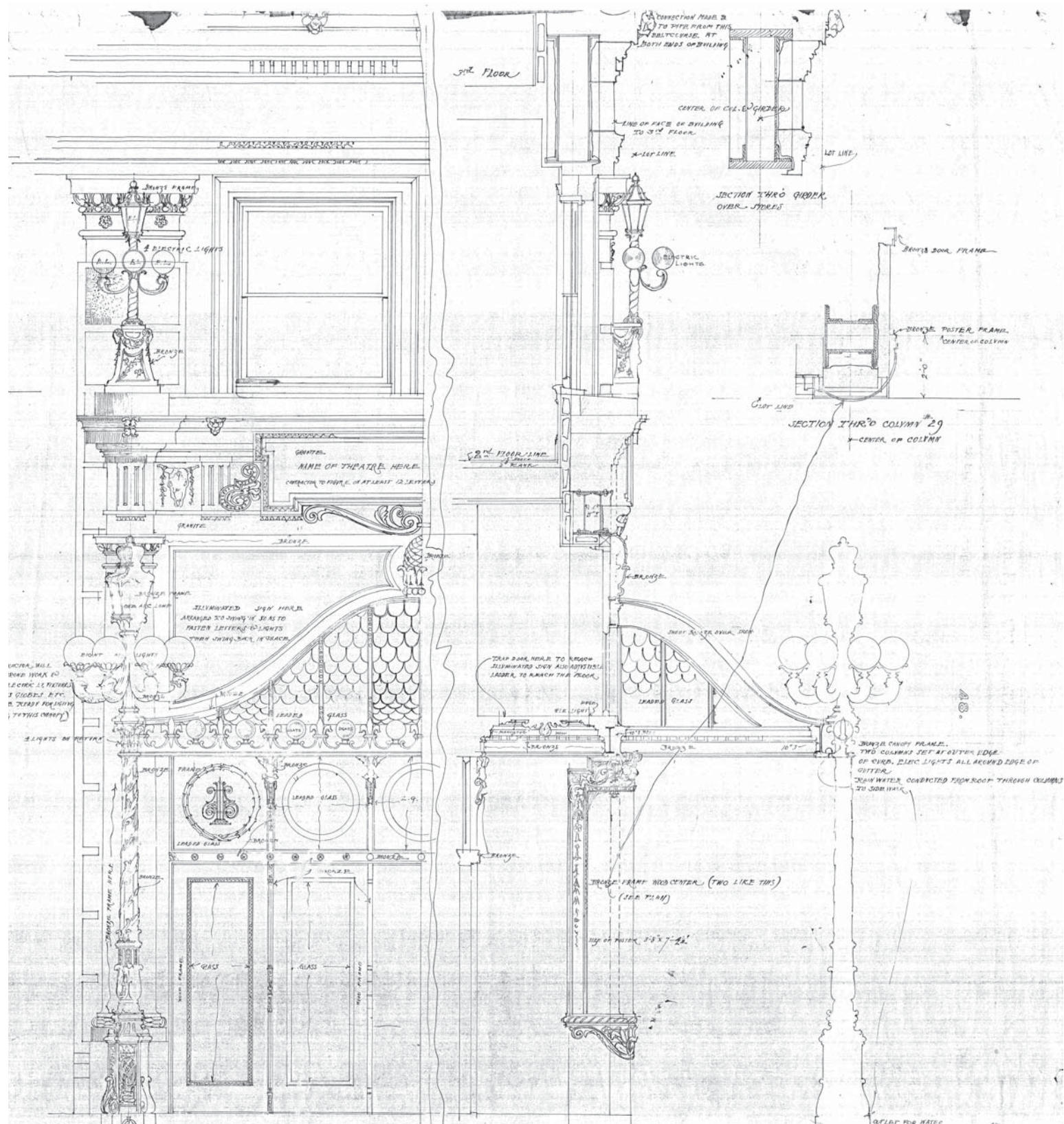




COLONIAL THEATRE
BOSTON LANDMARKS COMMISSION
CANOPY DESIGN
Boston, MA

JANUARY 23, 2018

ELKUS | MANFREDI
ARCHITECTS



CIRCA 1901



CIRCA 1901

HISTORICAL IMAGES



CIRCA 1902



CIRCA 1932



CIRCA 1902



CIRCA 1965

HISTORICAL IMAGES

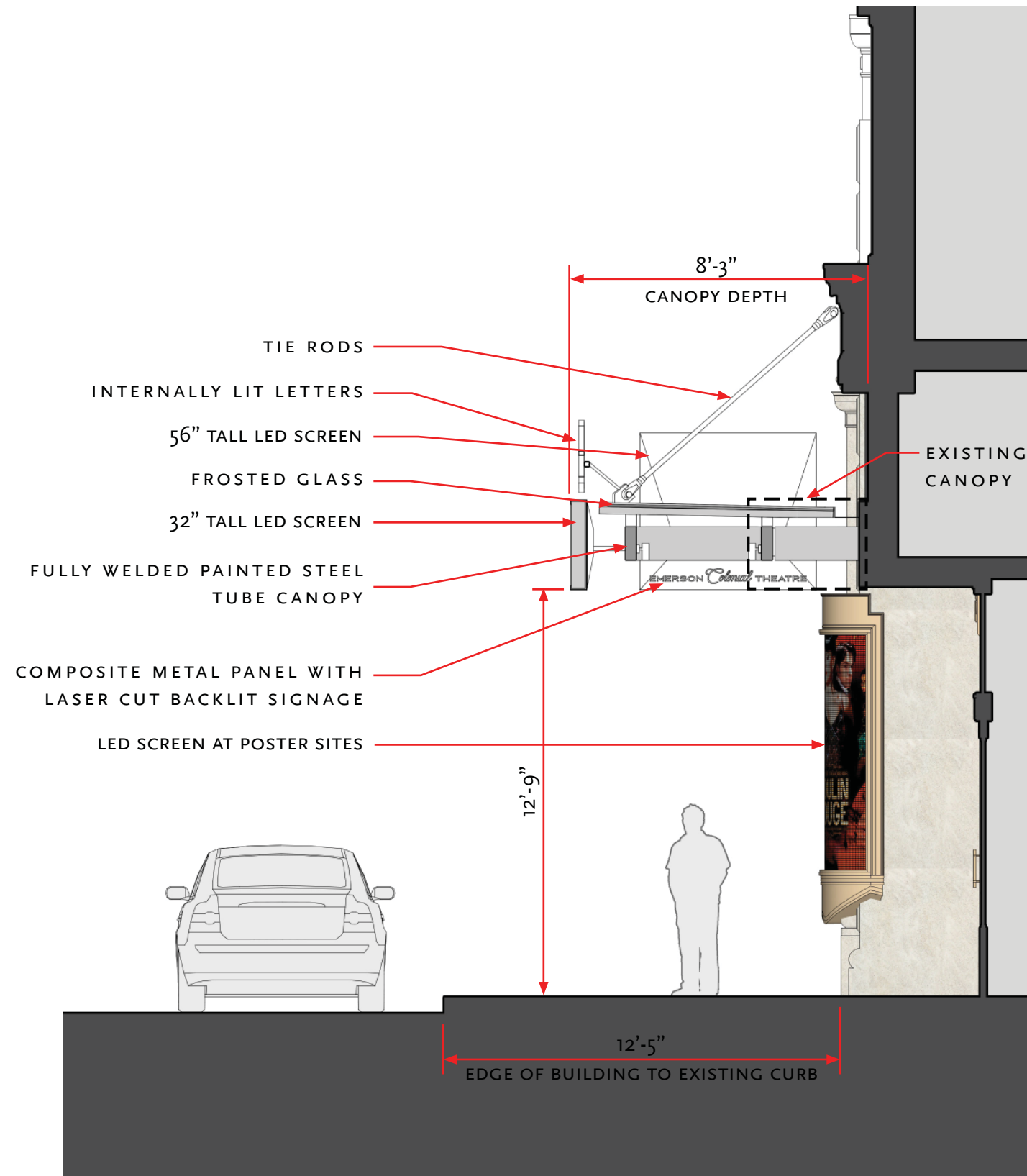


CIRCA 1990 +/-

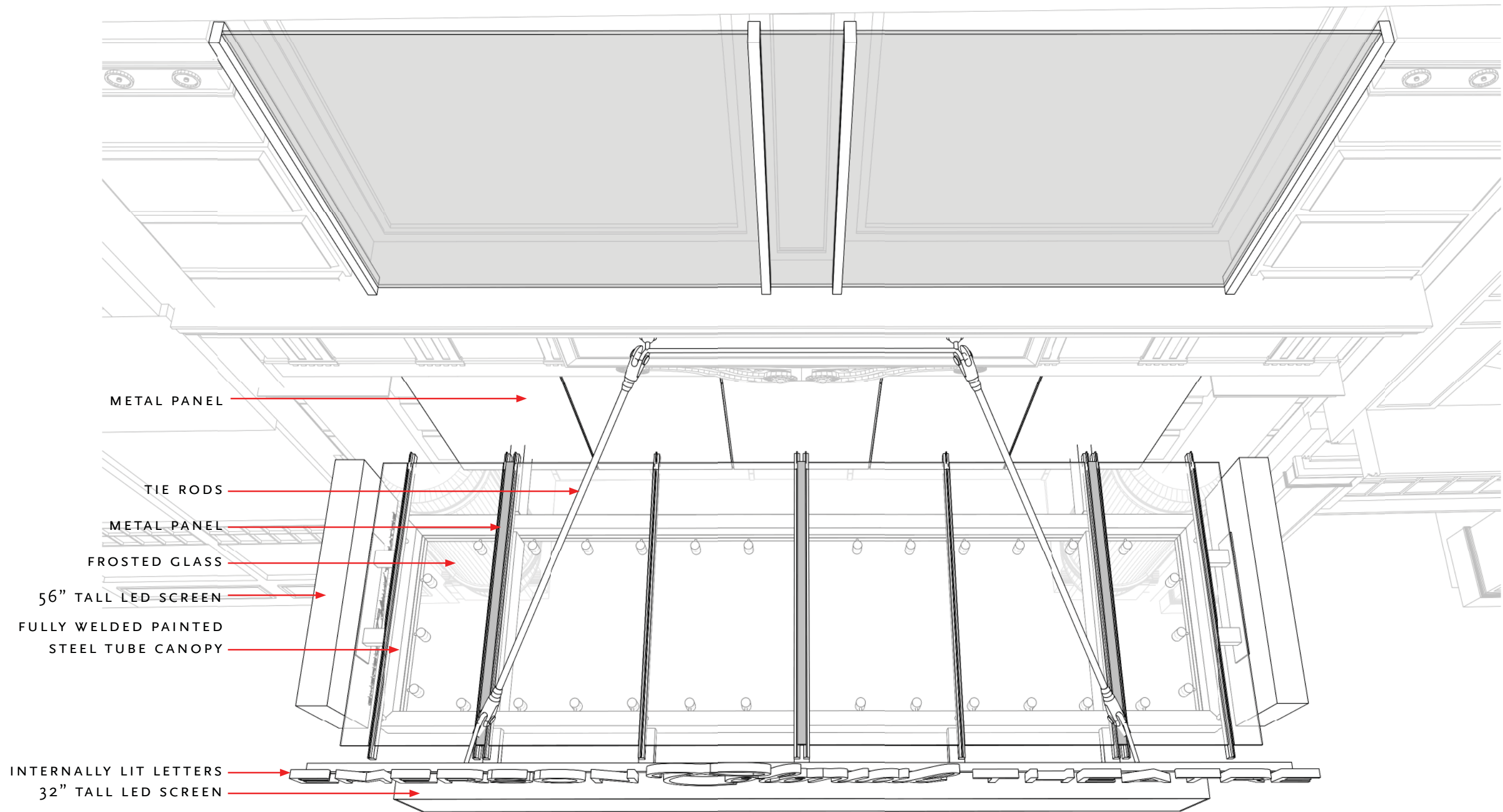
HISTORICAL IMAGES



PRESENT

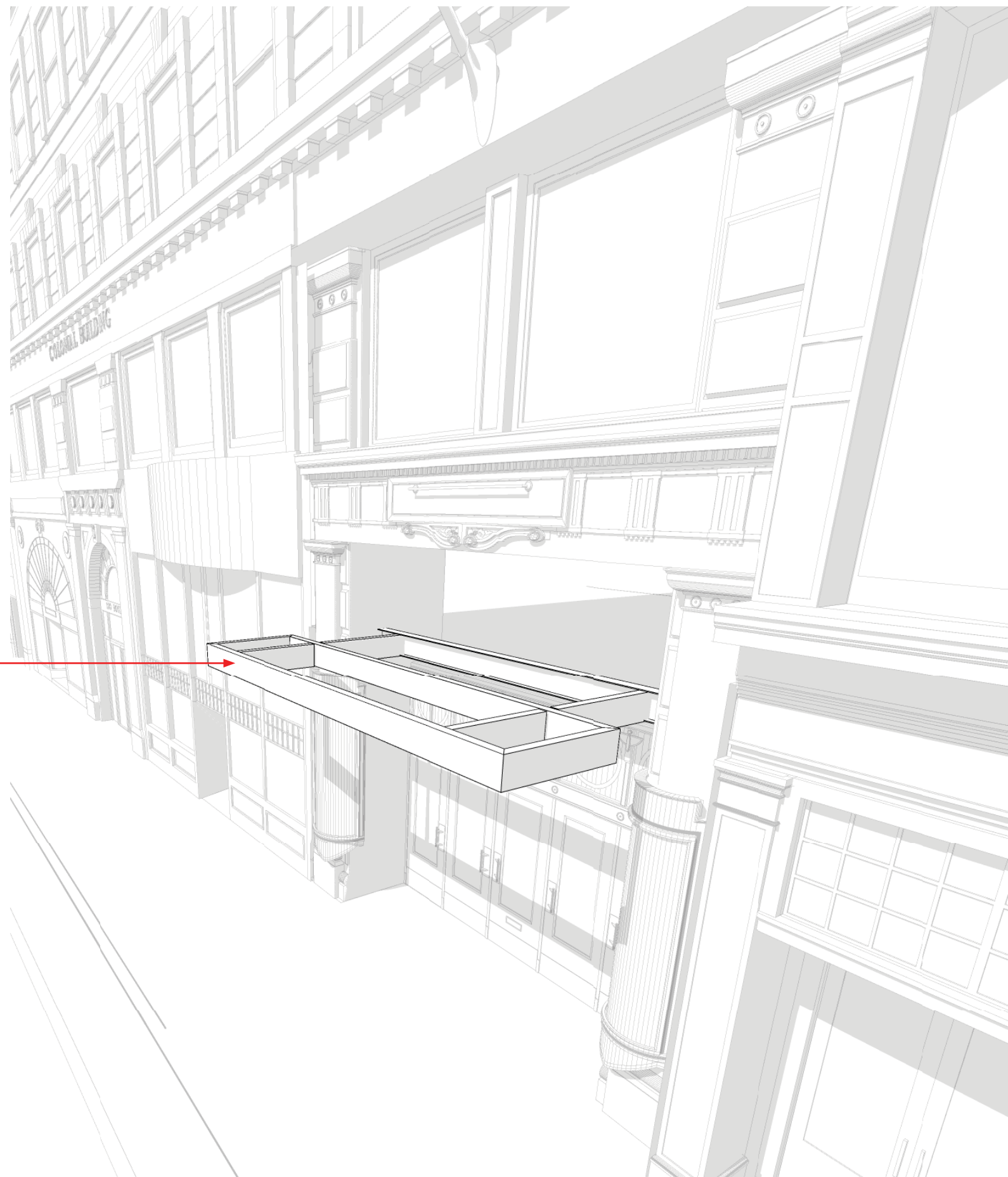


PROPOSED SECTION



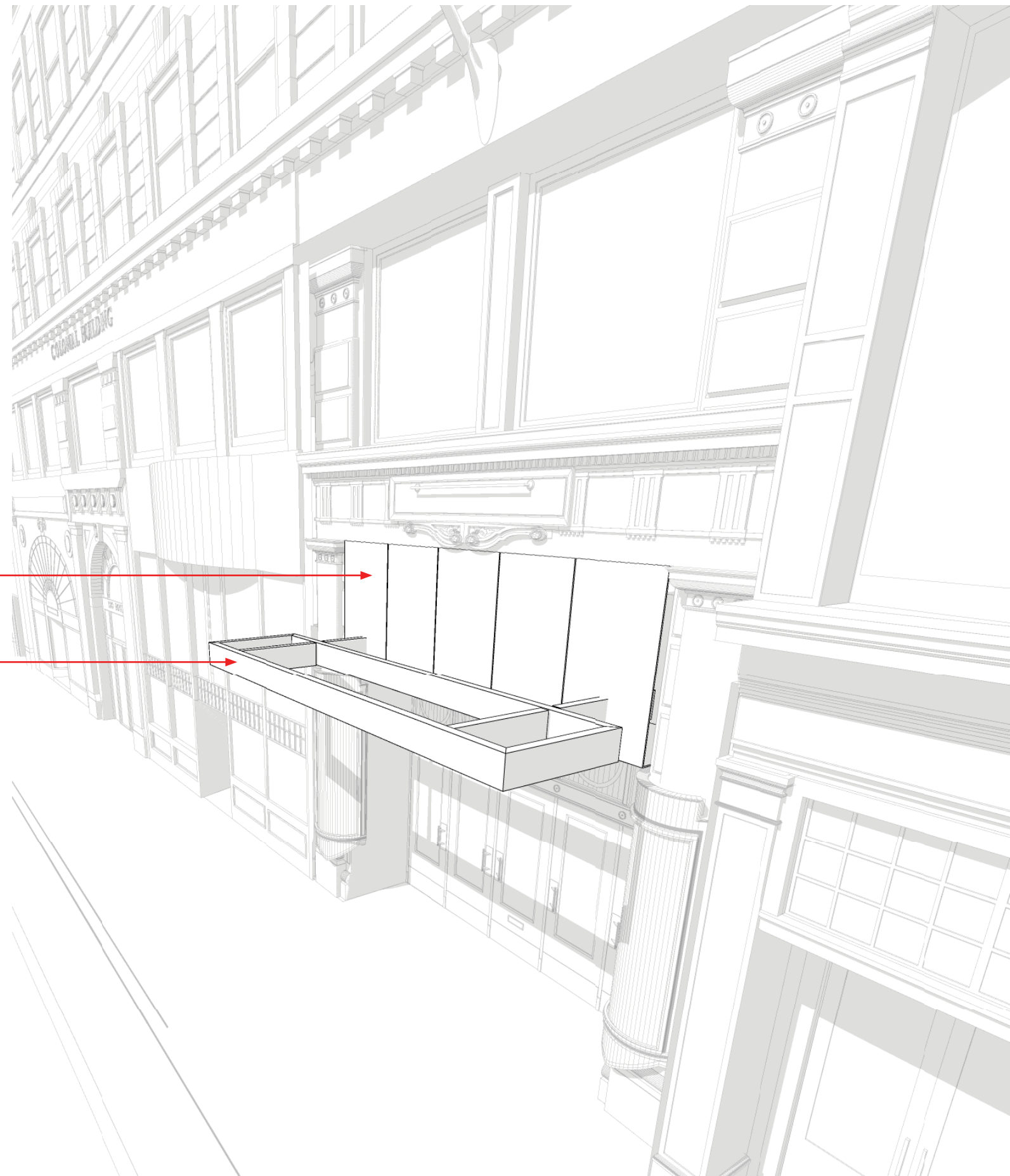
PROPOSED PLAN PERSPECTIVE

FULLY WELDED
PAINTED STEEL TUBE
CANOPY

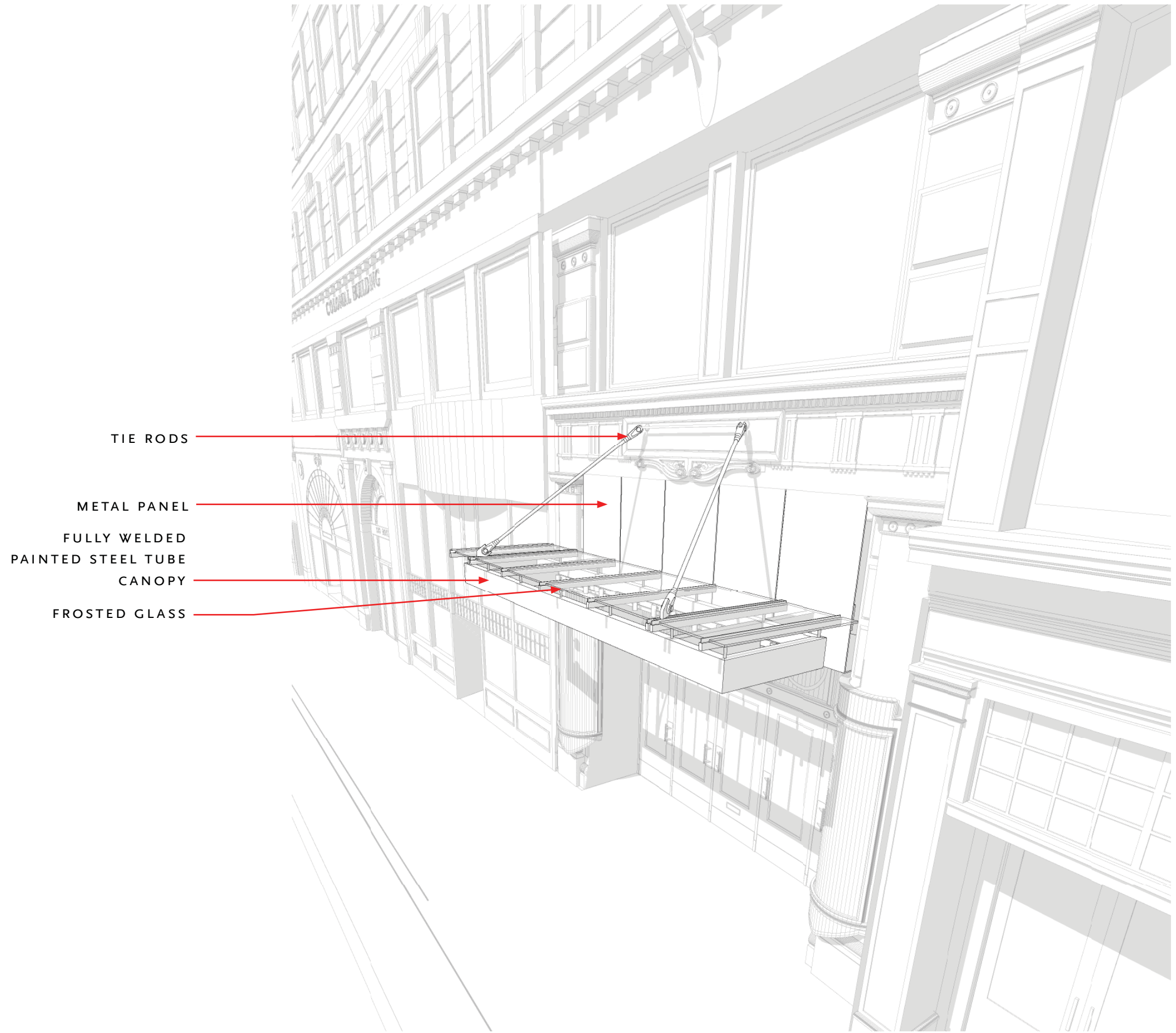


PROPOSED CANOPY DIAGRAM

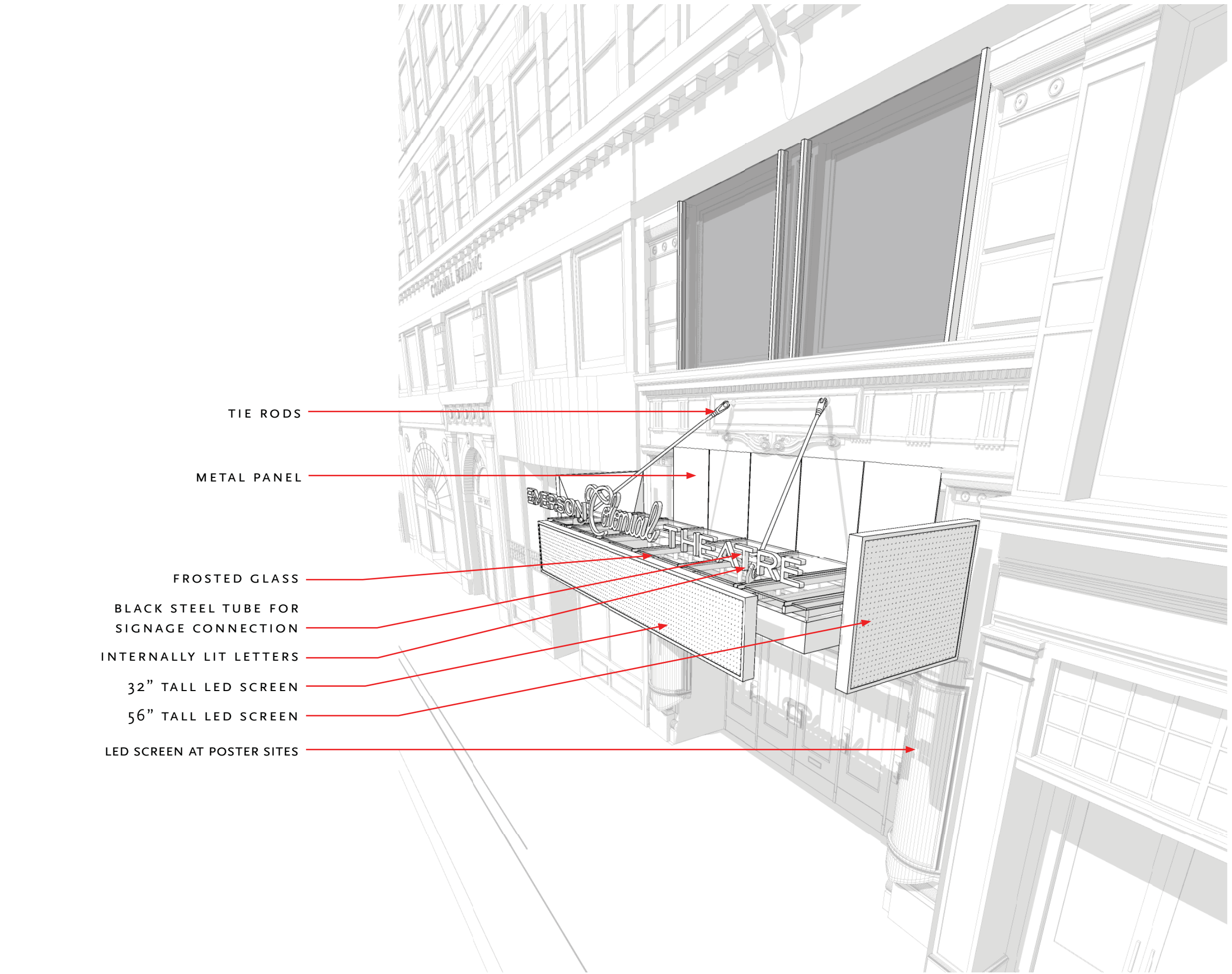
METAL PANEL
FULLY WELDED
PAINTED STEEL TUBE
CANOPY



PROPOSED CANOPY DIAGRAM



PROPOSED CANOPY DIAGRAM



TIE RODS

METAL PANEL

FROSTED GLASS

BLACK STEEL TUBE FOR
SIGNAGE CONNECTION

INTERNALLY LIT LETTERS

32" TALL LED SCREEN

56" TALL LED SCREEN

LED SCREEN AT POSTER SITES

PROPOSED CANOPY DIAGRAM



PROPOSED PERSPECTIVE



PROPOSED PERSPECTIVE



PROPOSED PERSPECTIVE



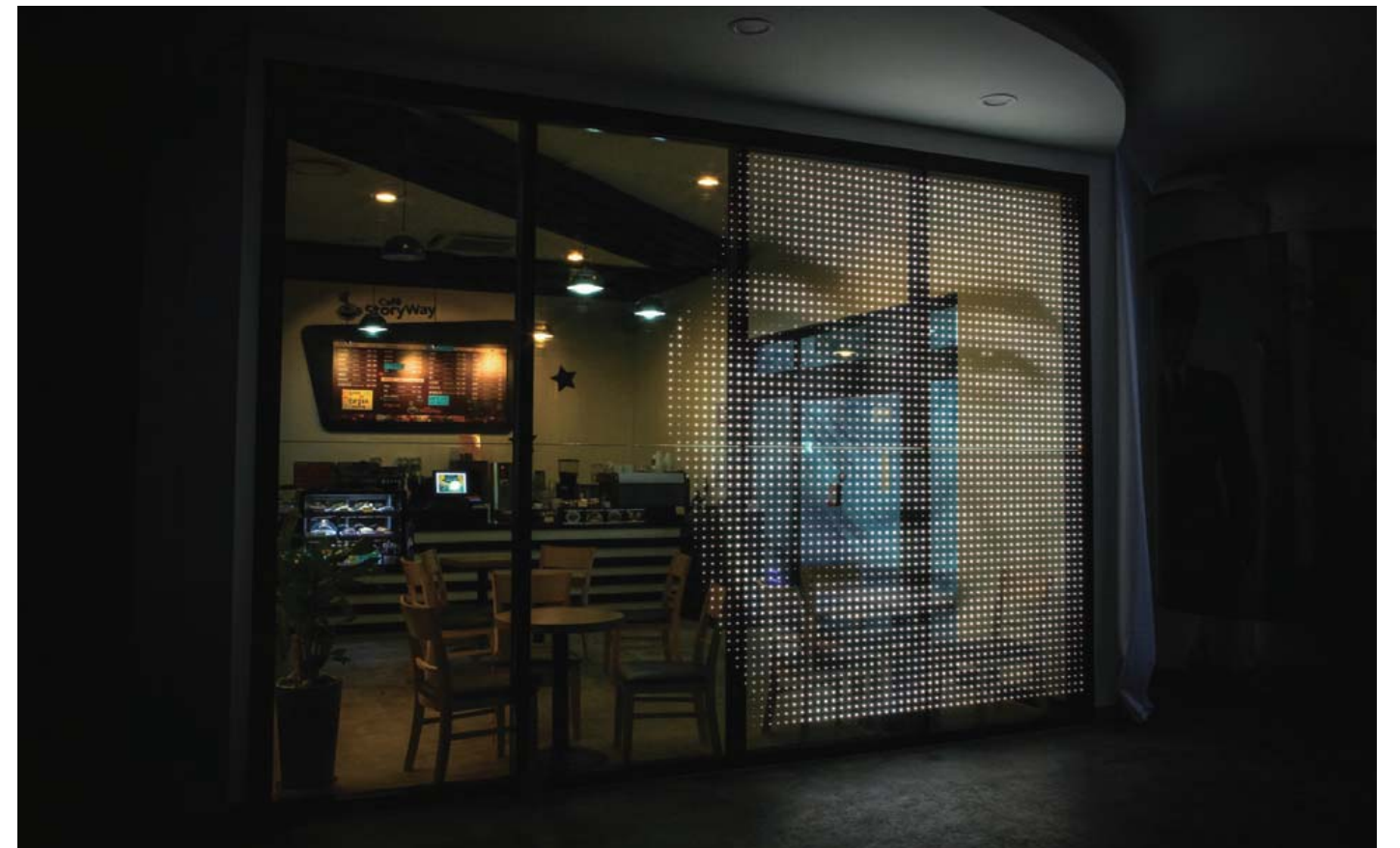
PROPOSED PERSPECTIVE



Paramount Theater Marquee
Boston, MA
November 2017



PRECEDENT IMAGES



GLASS LED PRECEDENTS



PROPOSED PERSPECTIVE