



Improvements to

Franklin Park Pathways, Lower Circuit Drive and Scarboro Pond Area

Community Meeting # 3



AGENDA

1

PROJECT TEAM INTRODUCTION

2

PROJECT OVERVIEW

3

**BRIEFING ON PHASE 5A CONSTRUCTION
AND PHASE 5B DESIGN**

4

LISTENING & DISCUSSION

5

CLOSING REMARKS & NEXT STEPS

PROJECT TEAM

Lauren Bryant

Project Manager

lauren.bryant@boston.gov or 617-961-3019

Marchelle Jacques-Yarde

Outreach Coordinator, External Affairs

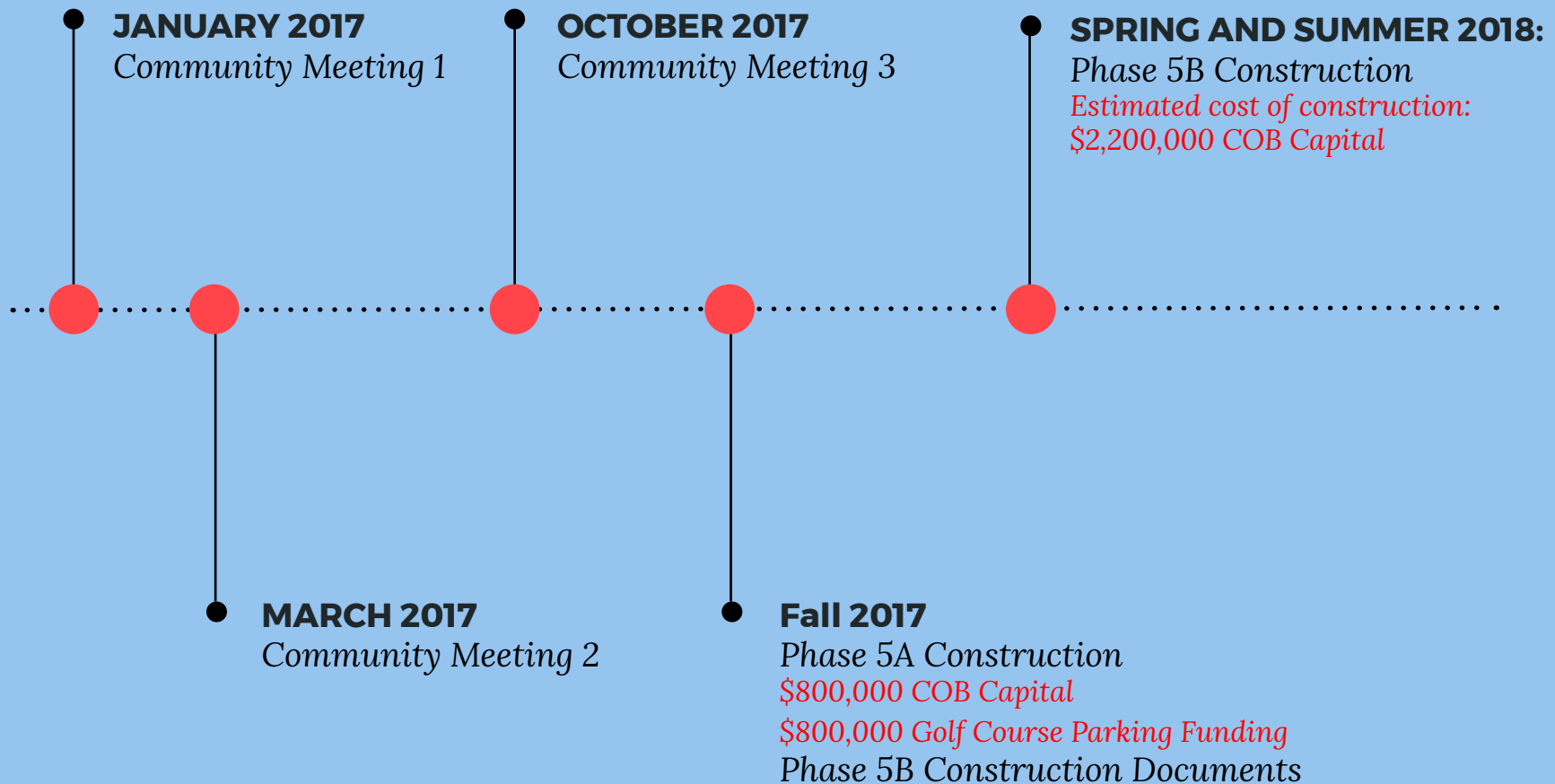
marchelle.jacques-yarde@boston.gov or 617-961-3006

Kyle Zick

Kyle Zick Landscape Architecture, Inc.



PROJECT SCHEDULE & FUNDING



PARK & RECREATION GOALS

- **Preserve and Protect/Existing Trees**
- **Expand Usable Park Area**
- **Improve Universal Access**
- **Enhance Park Visibility**
- **Improve Park Access**
- **Design Flexible, Multi-functional park spaces**





**City of Boston
Priorities**

**Safety Guidelines +
Regulatory Conditions**

**PARK
DESIGN**

**Parks + Recreation
Goals**

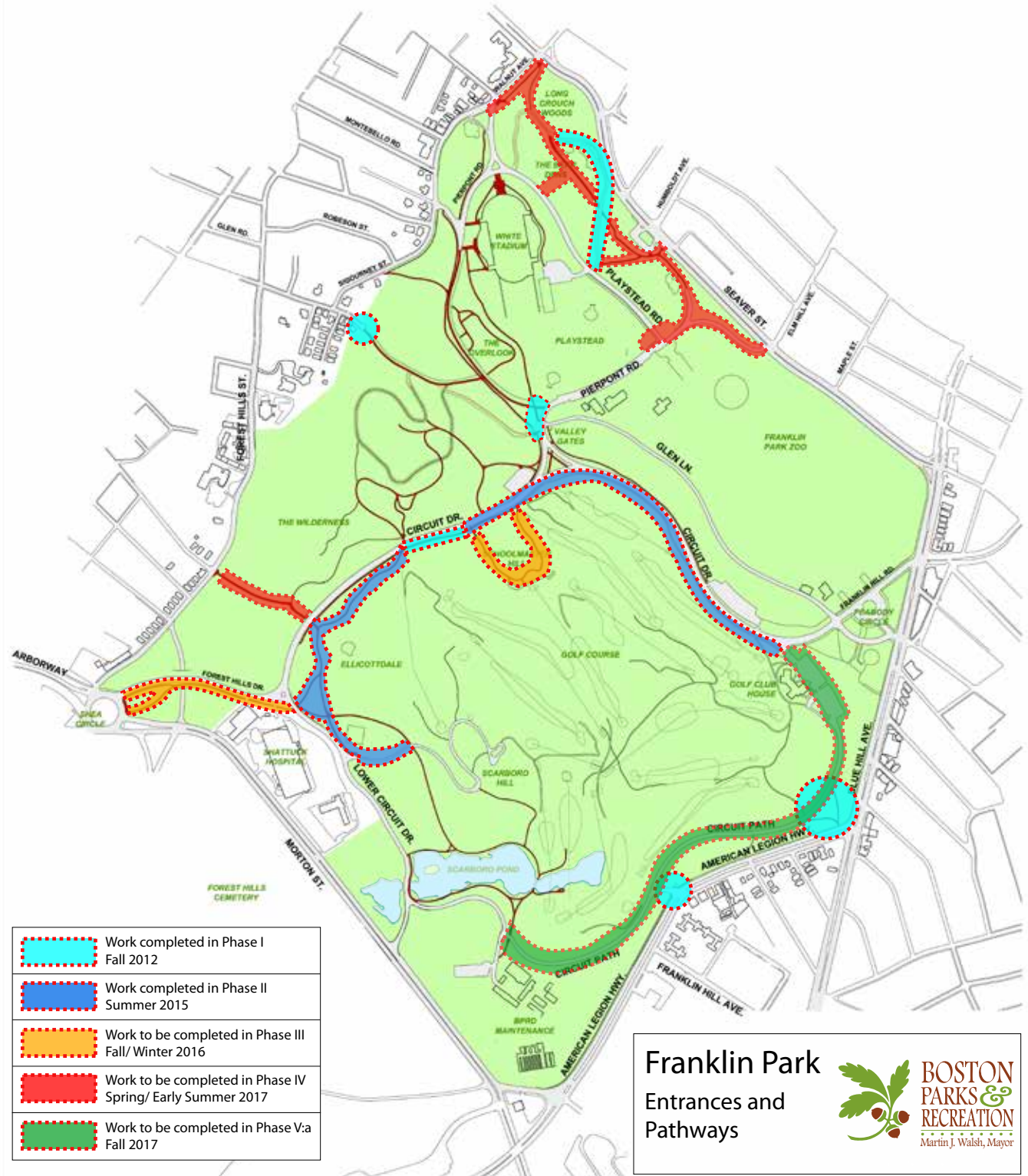
**Community
Input**

GOALS FOR COMMUNITY MEETING

- **Update on Phases 1 through 4**
- **Update on Phase 5A Construction: Scope & Schedule**
- **Update on Phase 5B Design for Lower Circuit Drive and Scarboro Pond**



PHASES 1-5A



Franklin Park
Entrances and Pathways



**BOSTON
PARKS &
RECREATION**
Martin J. Walshi, Mayor

BEFORE & AFTER IMAGES



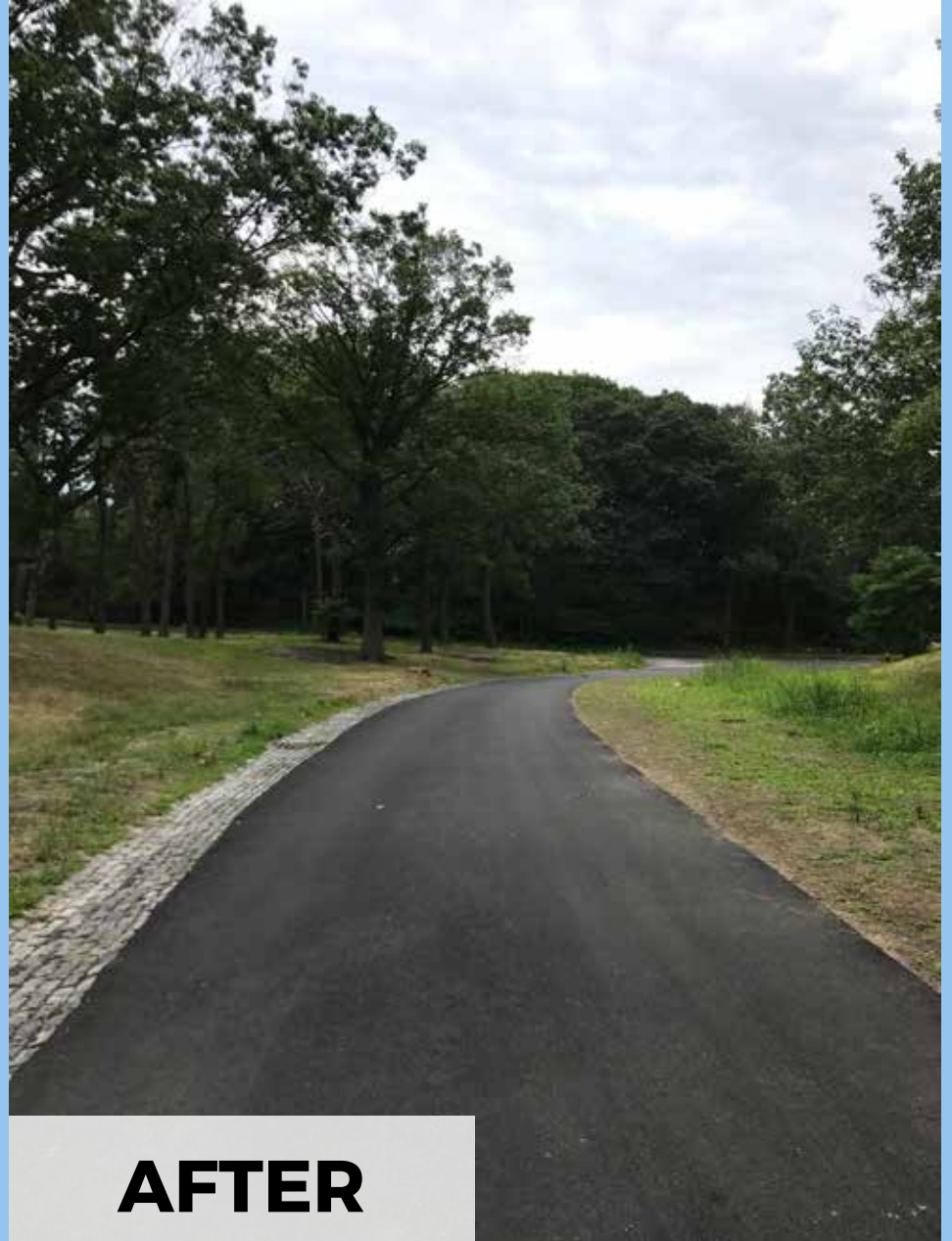
BEFORE

BEFORE & AFTER IMAGES



AFTER

BEFORE & AFTER IMAGES



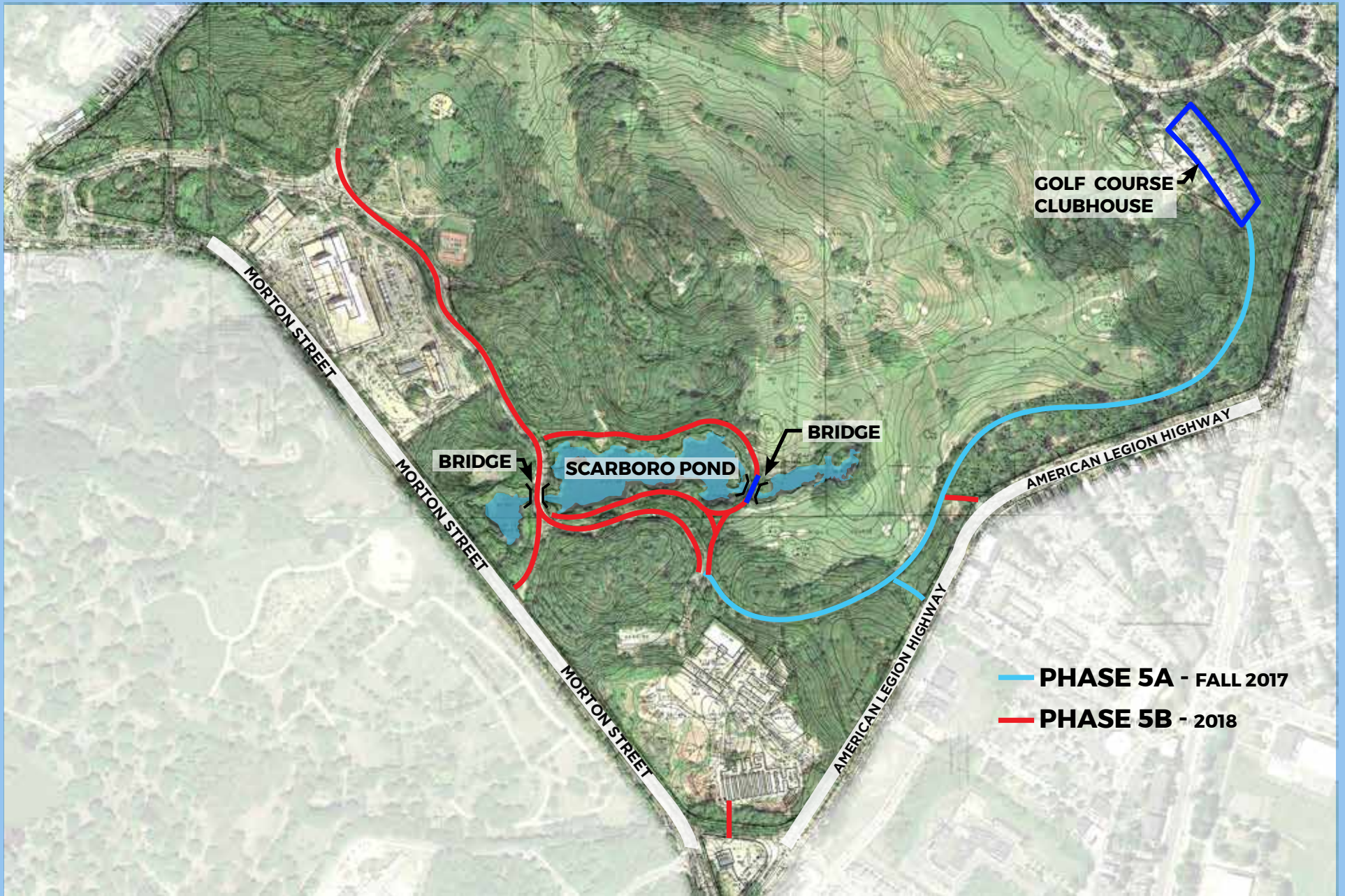
BEFORE & AFTER IMAGES



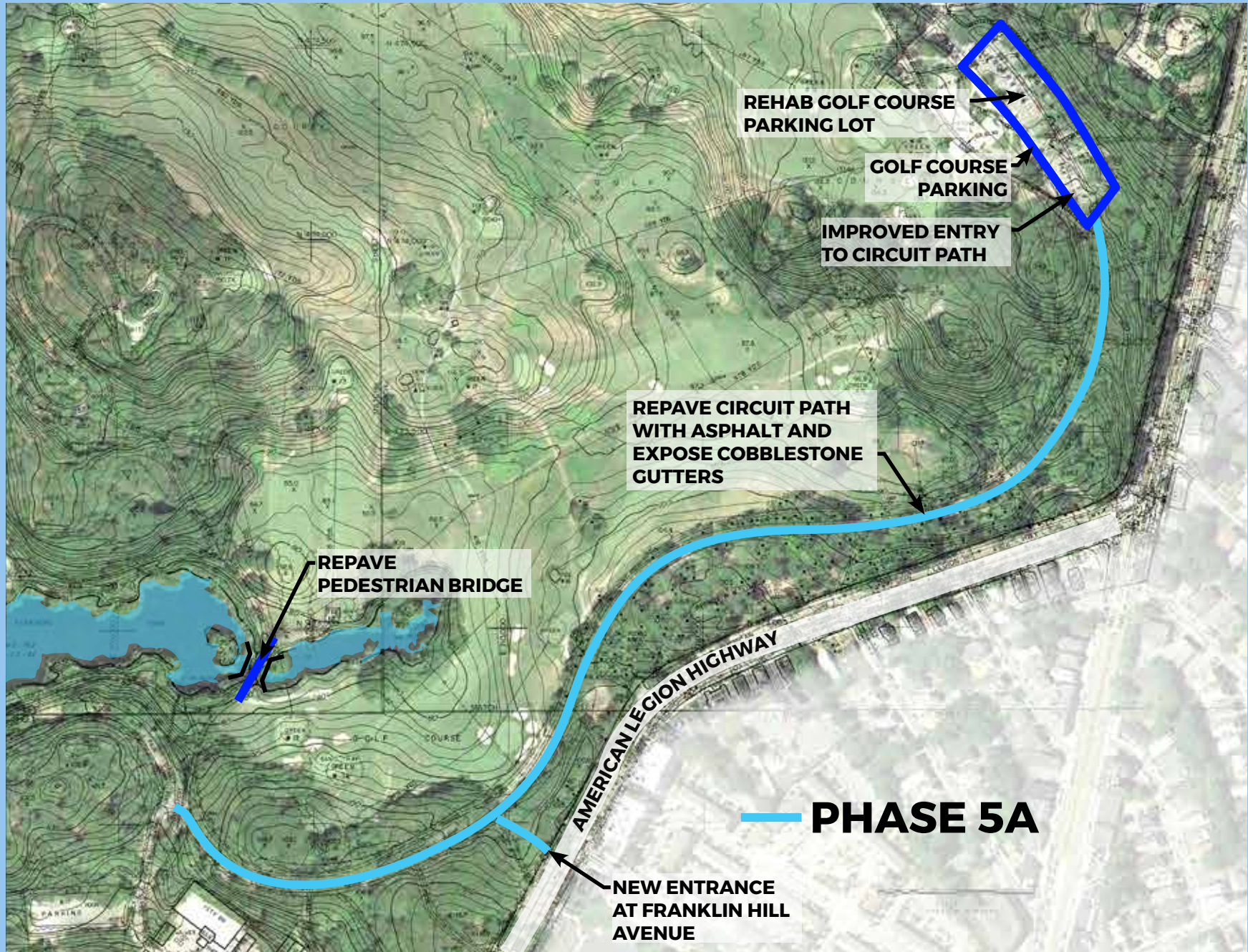
BEFORE & AFTER IMAGES



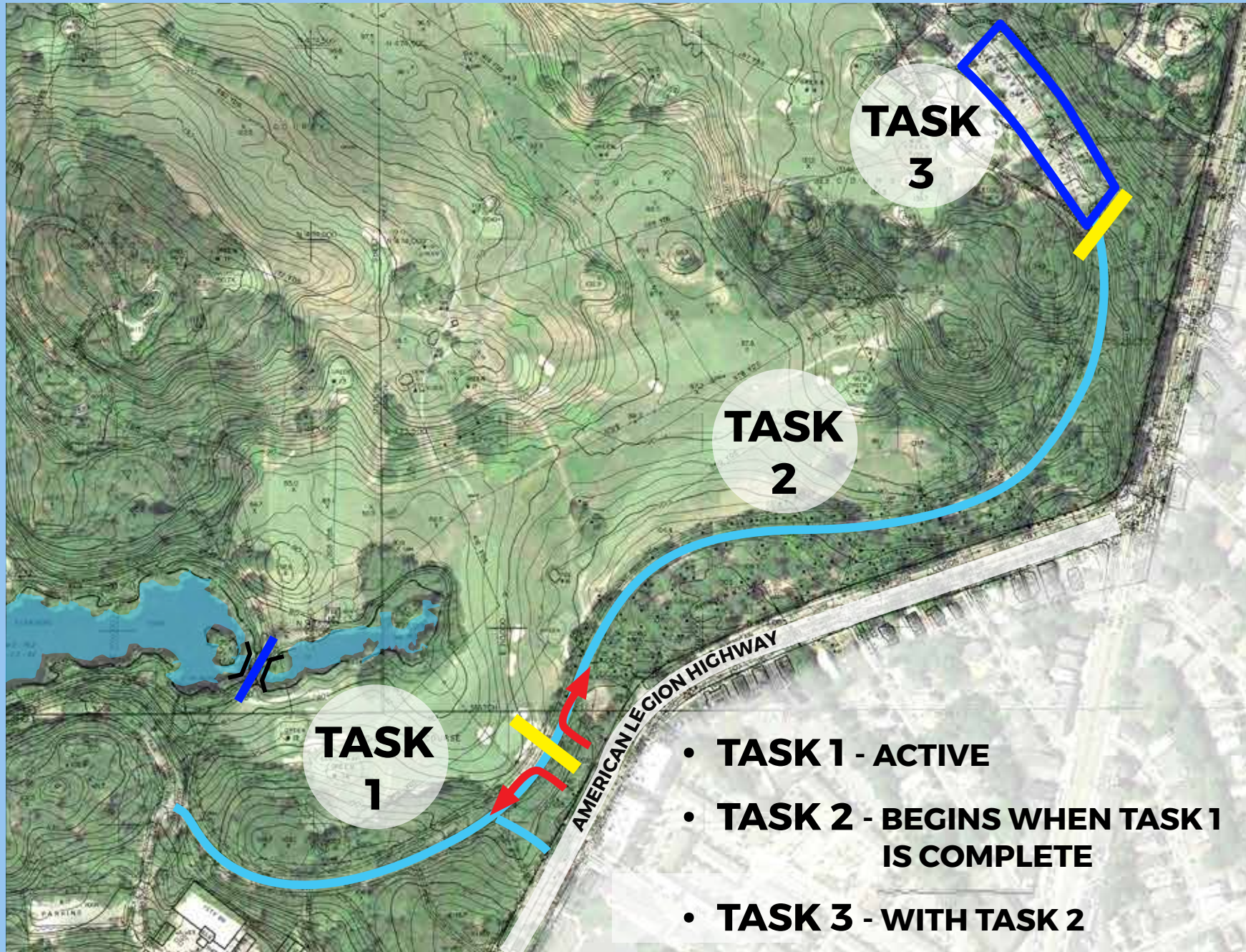
PROJECT OVERVIEW



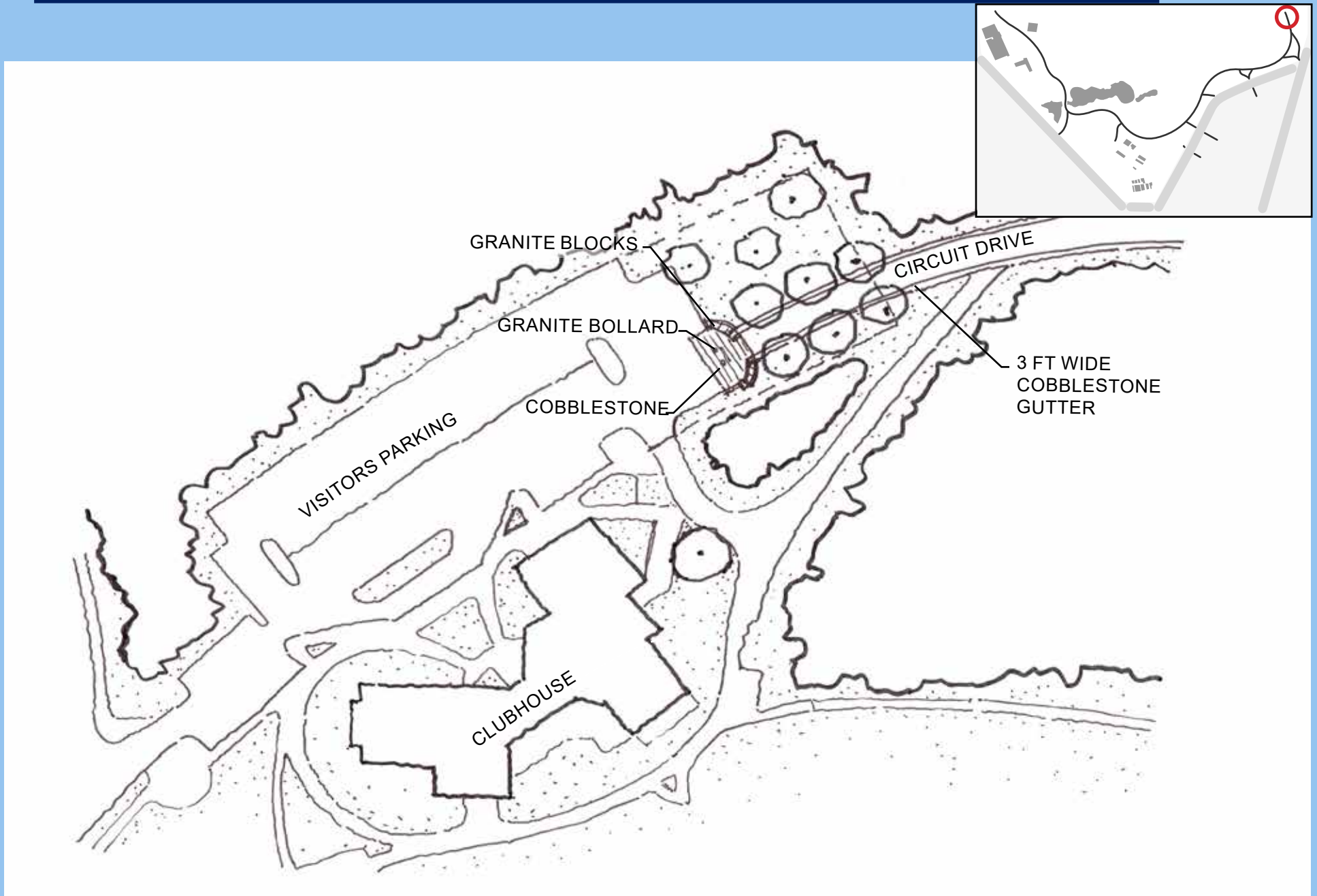
PHASE 5A



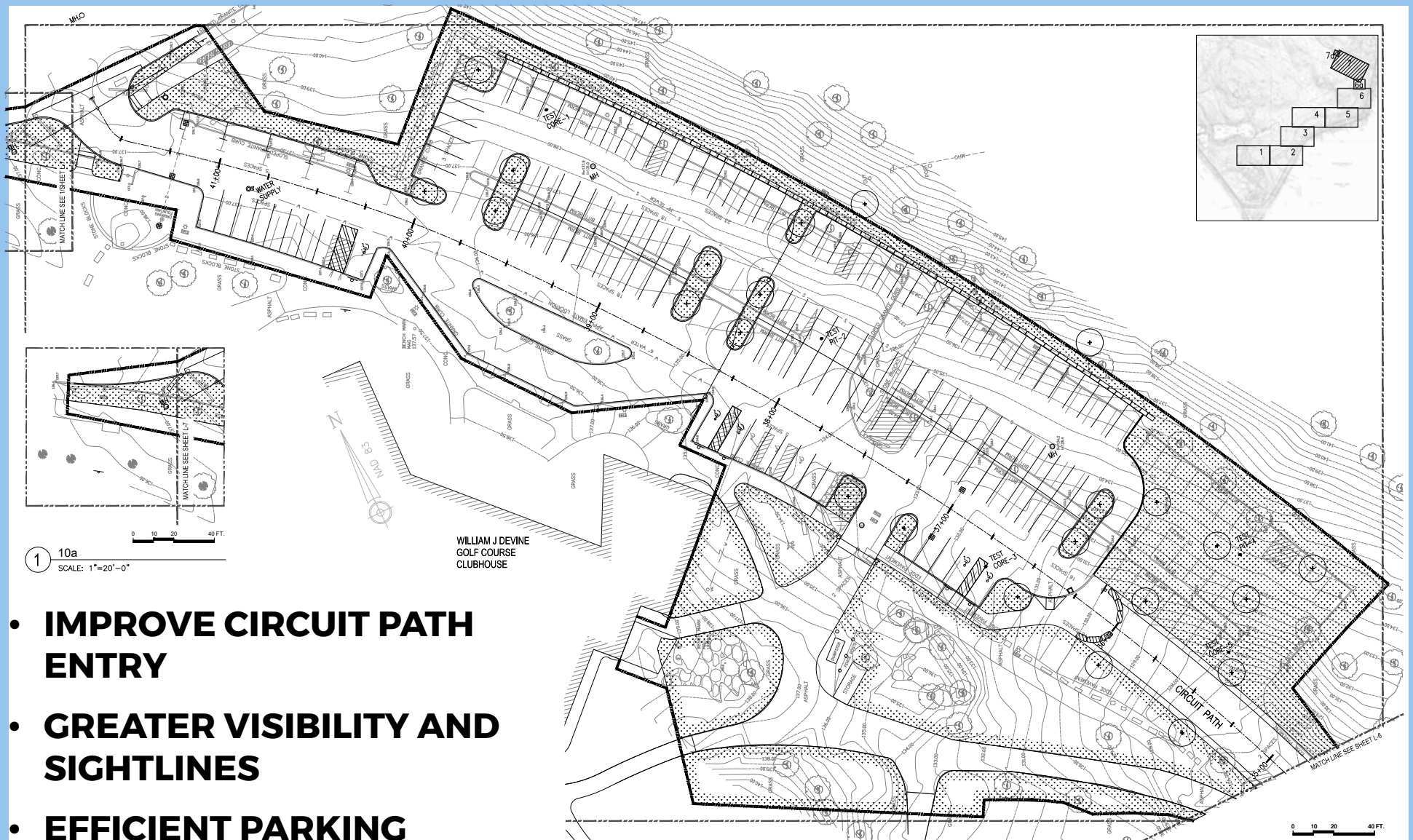
PHASE TASKS



PEDESTRIAN ENTRANCE AT GOLF CLUBHOUSE

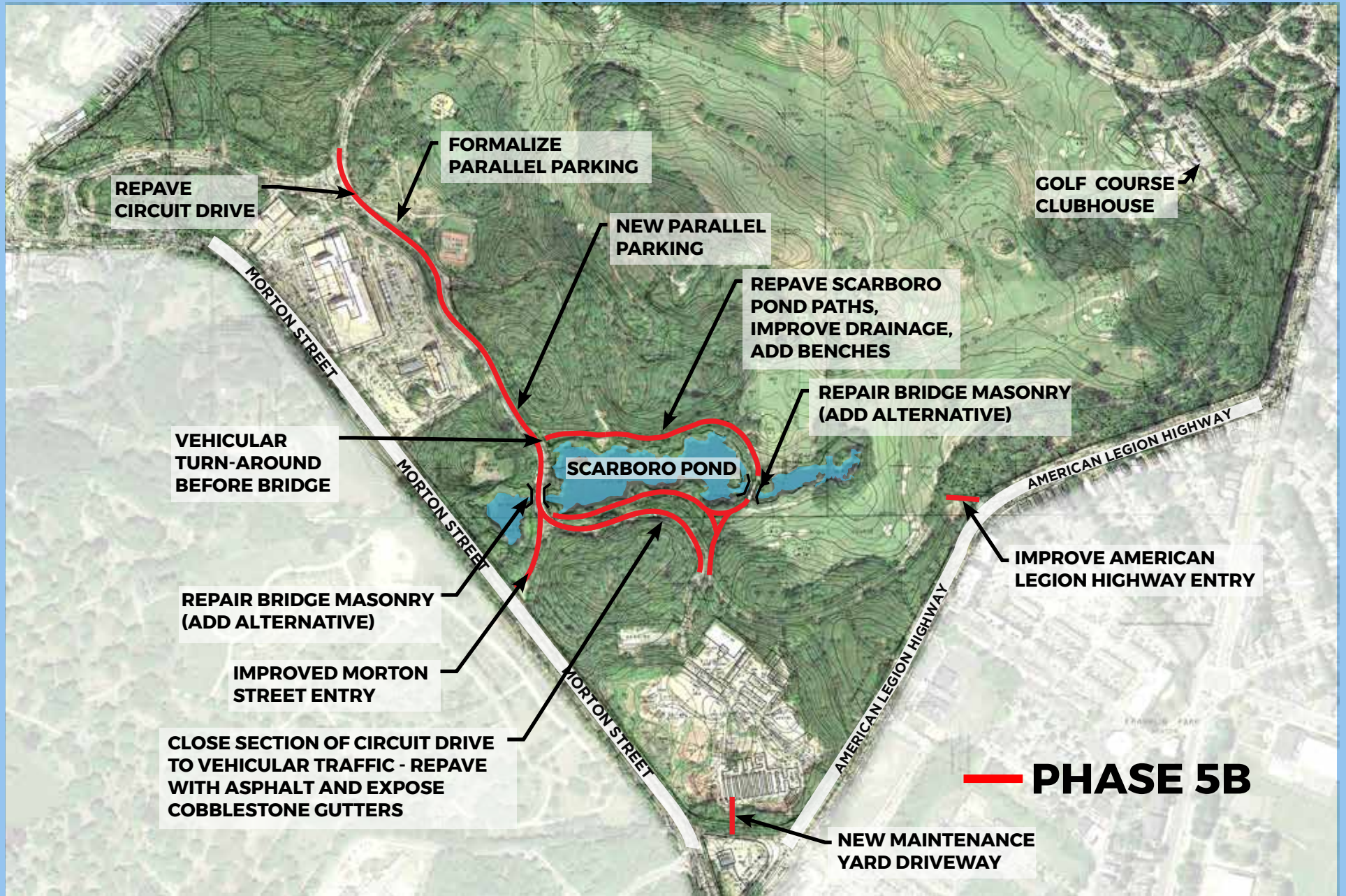


PARKING LOT IMPROVEMENTS



- **IMPROVE CIRCUIT PATH ENTRY**
- **GREATER VISIBILITY AND SIGHTLINES**
- **EFFICIENT PARKING LAYOUT**
- **ADDITIONAL LIGHTING**

PHASE 5B



EXISTING CONDITIONS

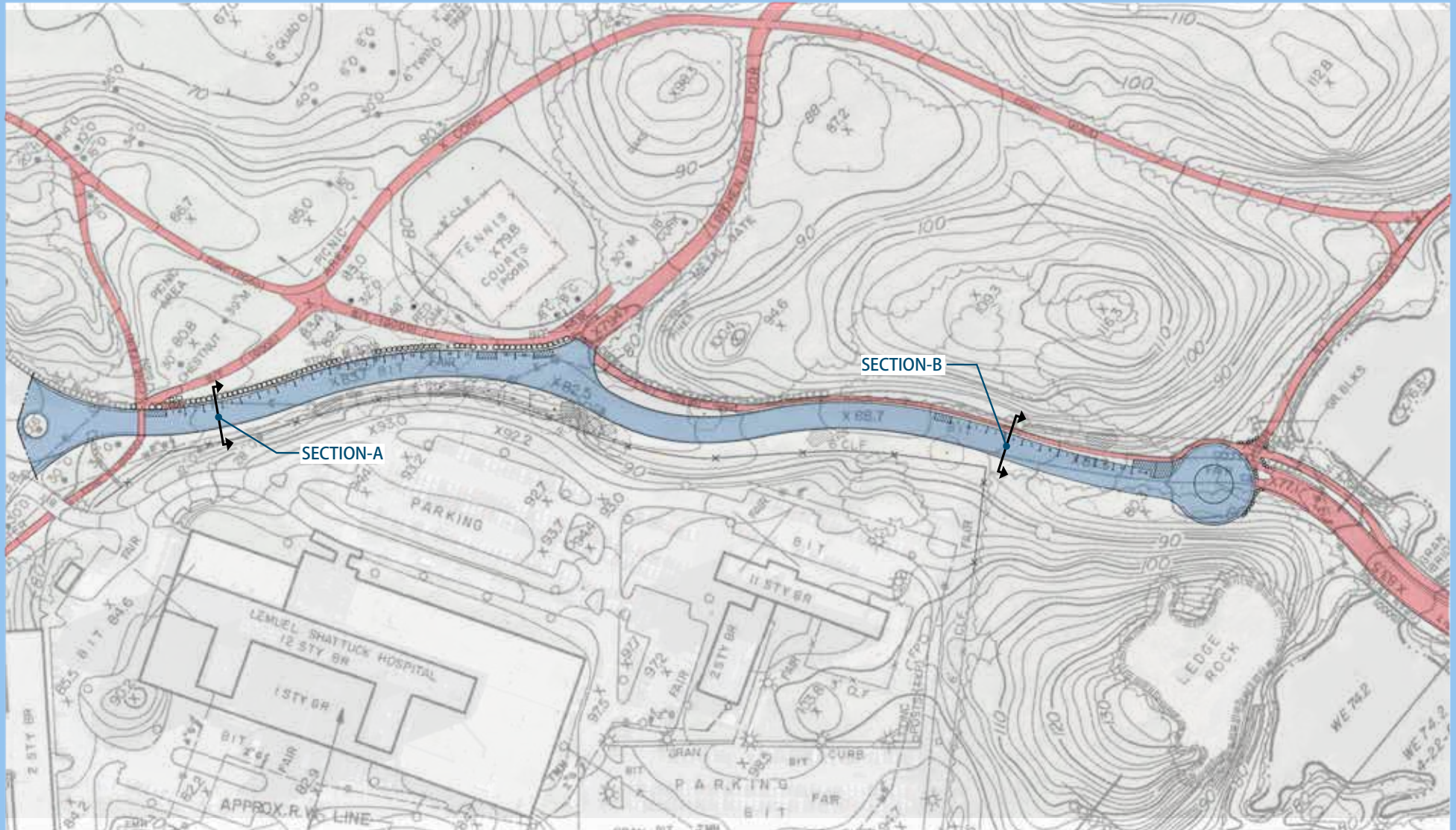


EXISTING CONDITION



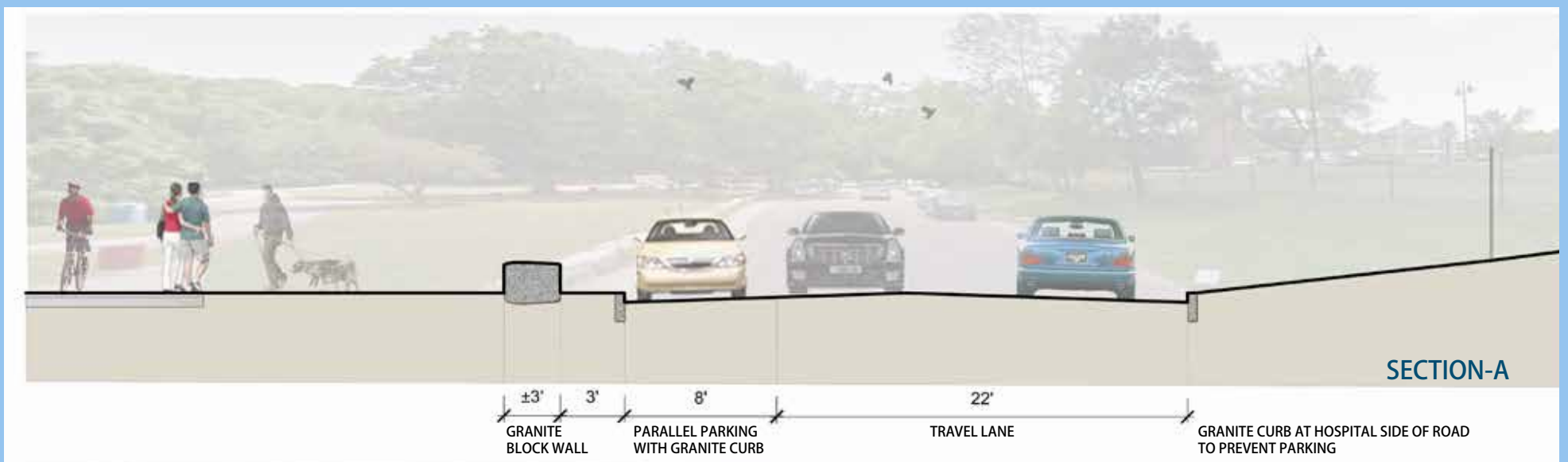
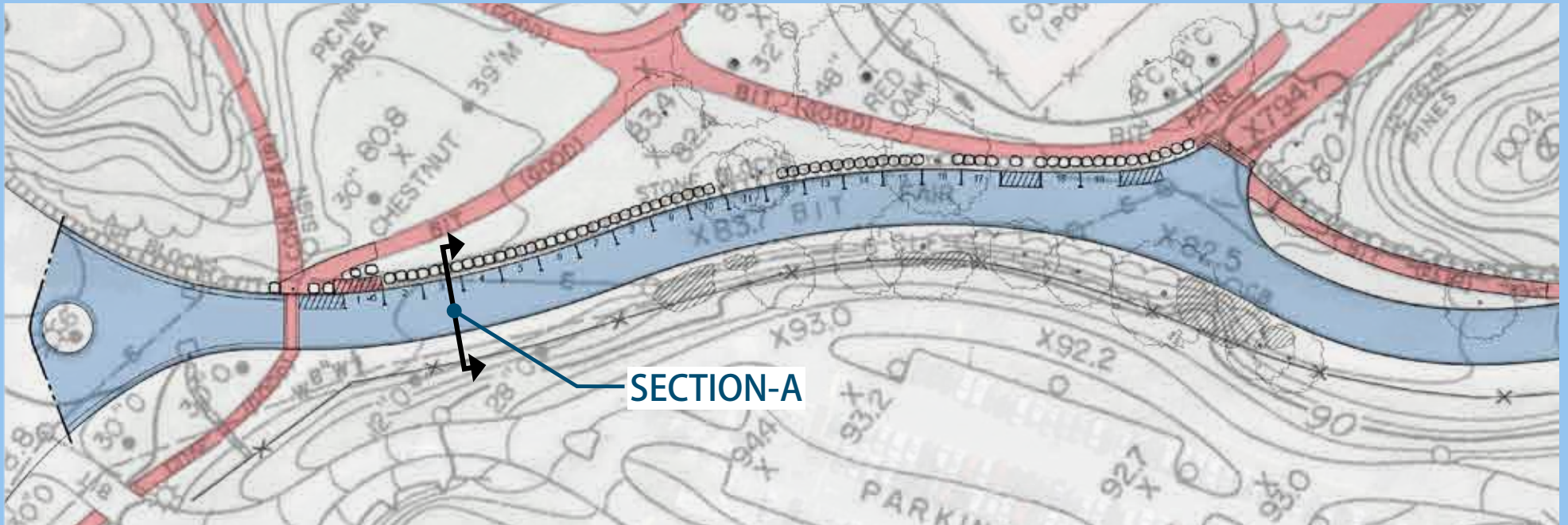
kzla

CIRCUIT DRIVE - CARS ALLOWED AS FAR AS SCARBORO POND

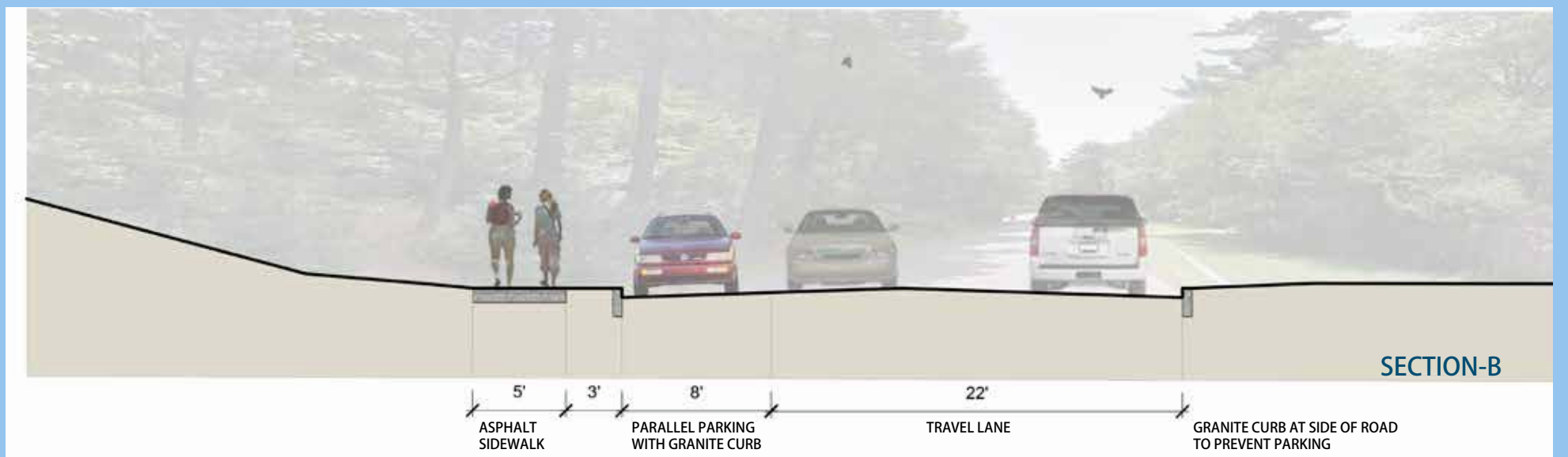
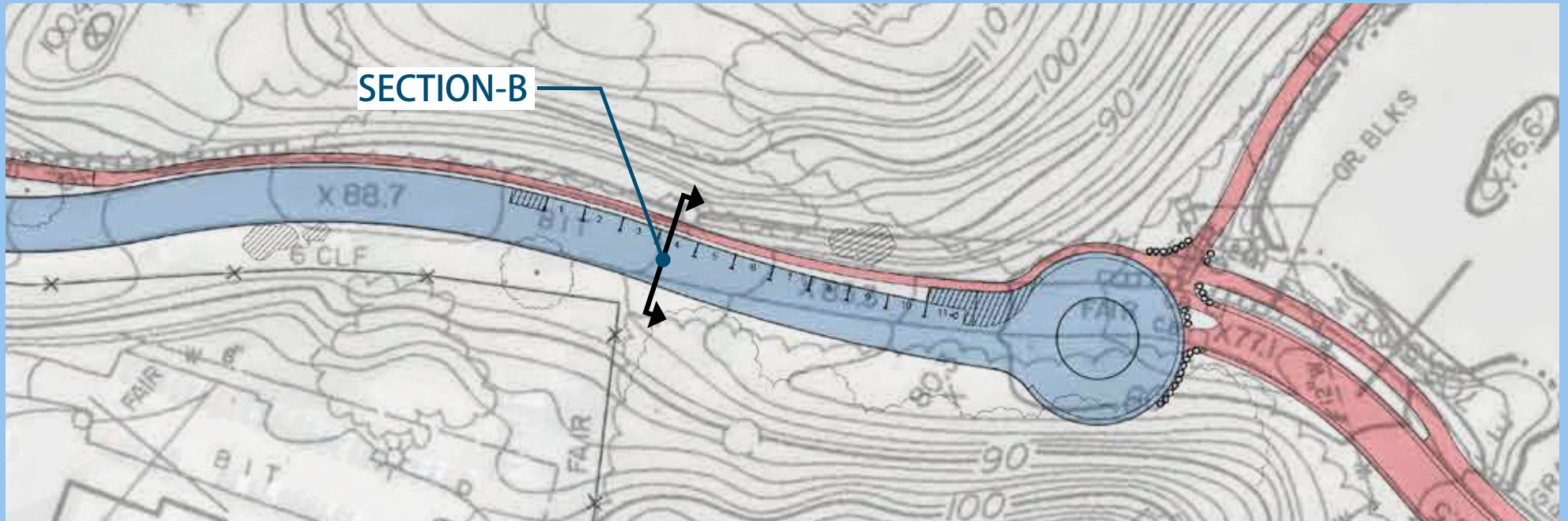


SITE PLAN

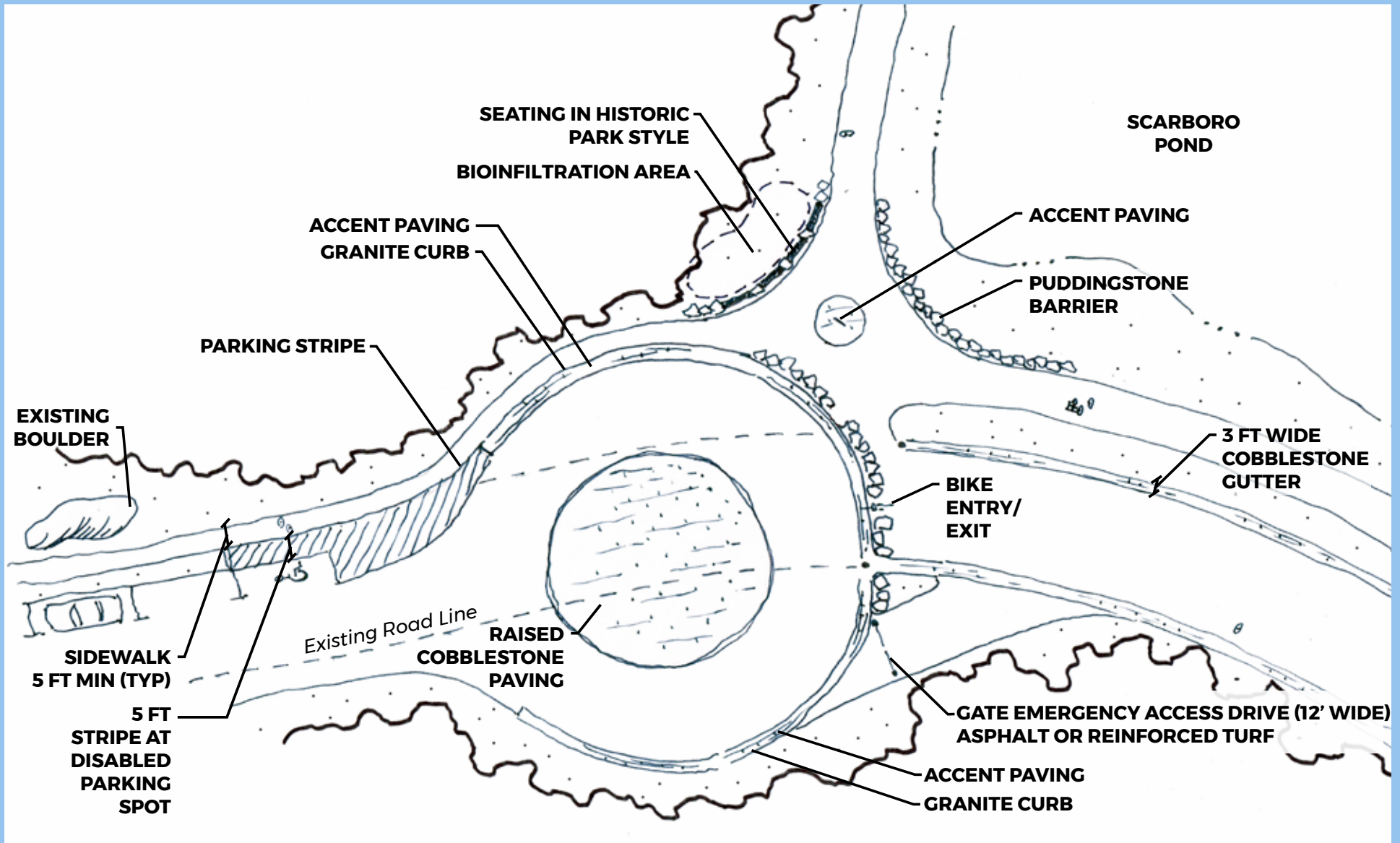
CIRCUIT DRIVE - CARS ALLOWED AS FAR AS SCARBORO POND



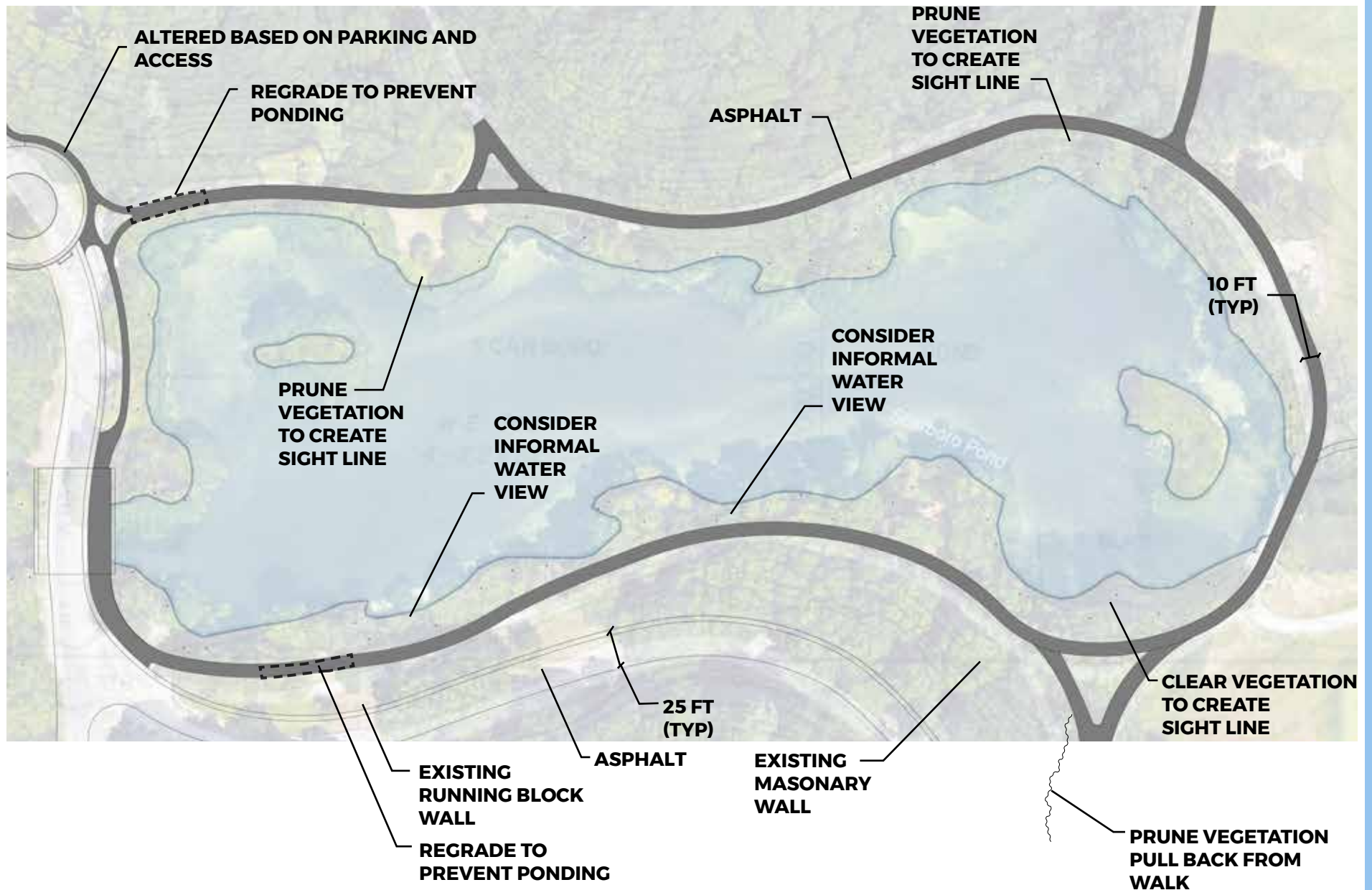
CIRCUIT DRIVE - CARS ALLOWED AS FAR AS SCARBORO POND



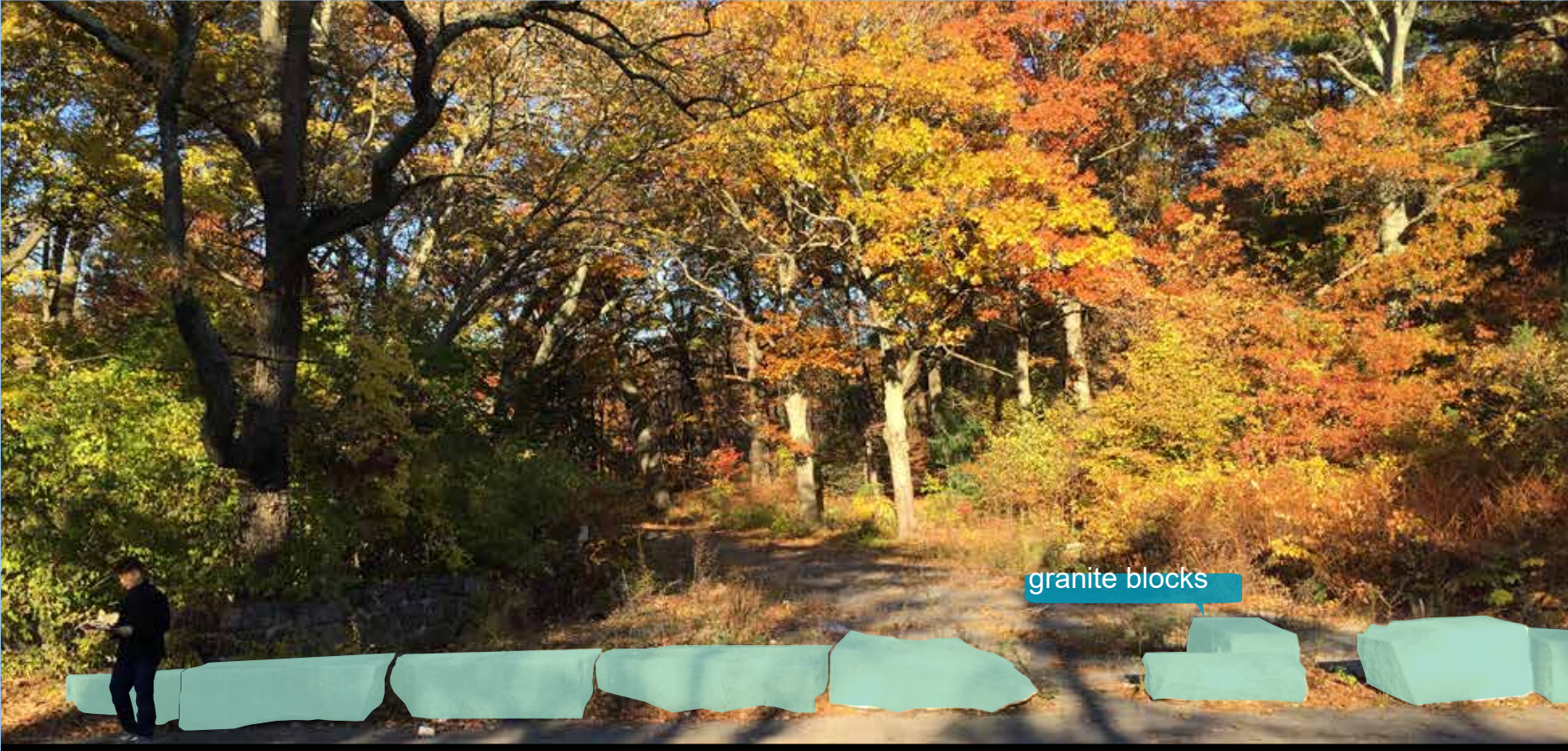
EDGE DETAILS AND VEHICULAR BARRIERS FOR CIRCUIT DRIVE BEFORE SCARBORO POND



PROPOSAL FOR SCARBORO POND



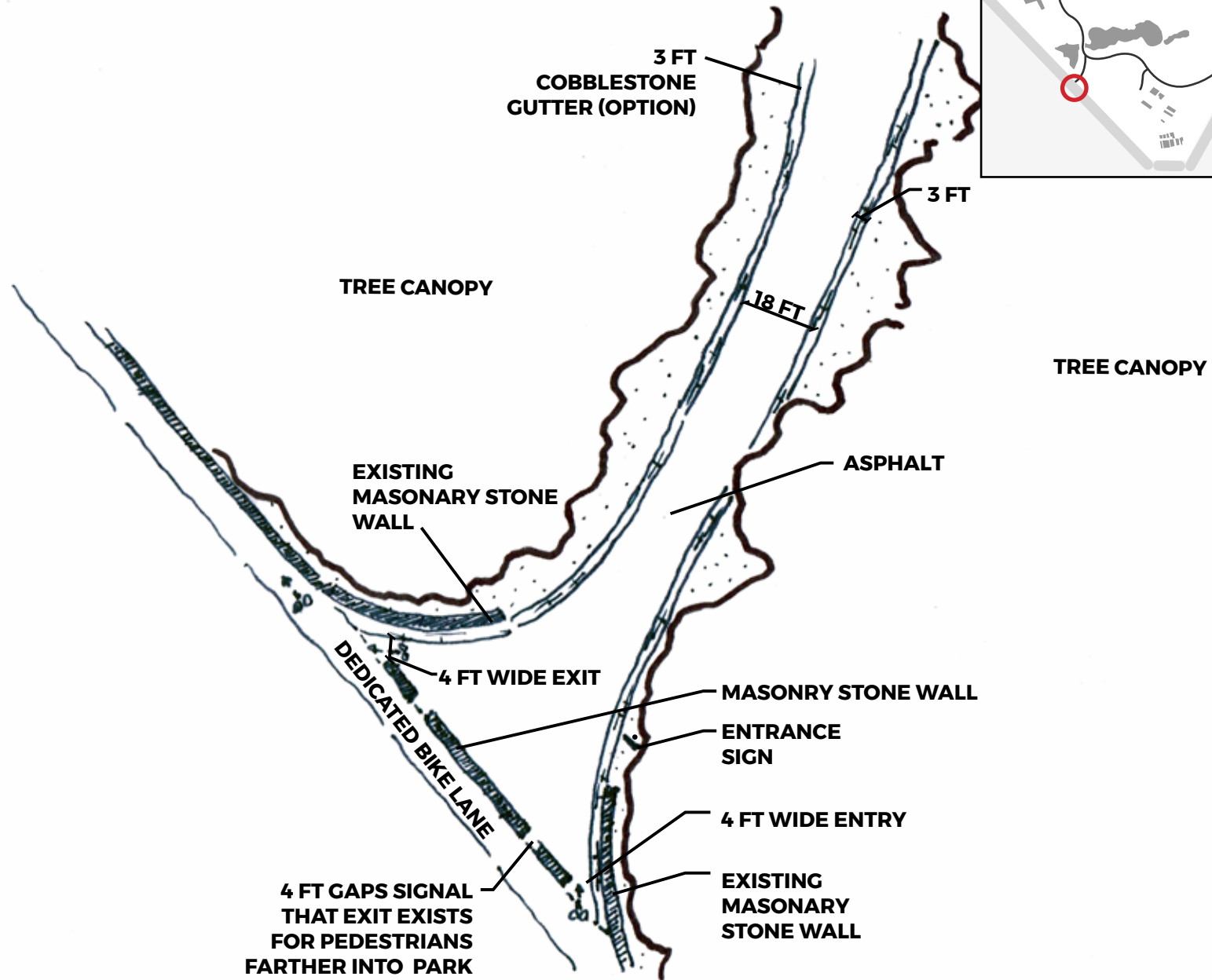
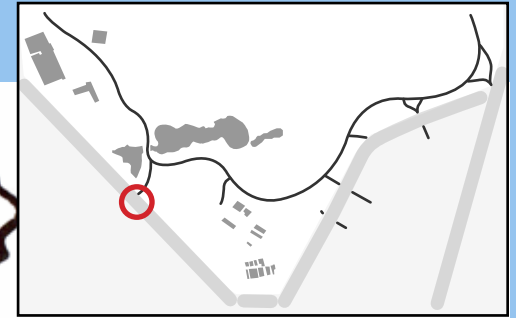
PEDESTRIAN ENTRANCE AT MORTON STREET



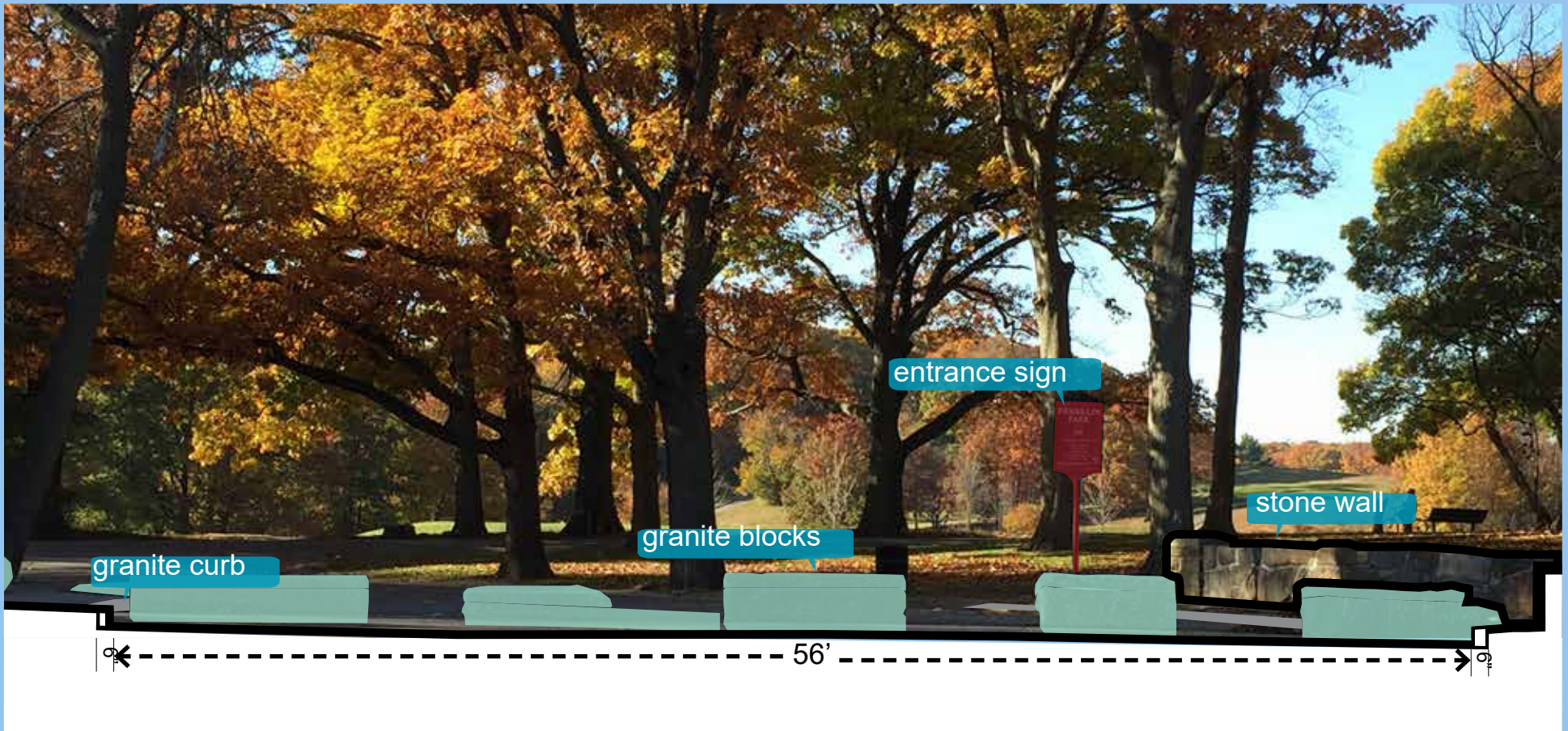
granite blocks

←----- 89' ----->

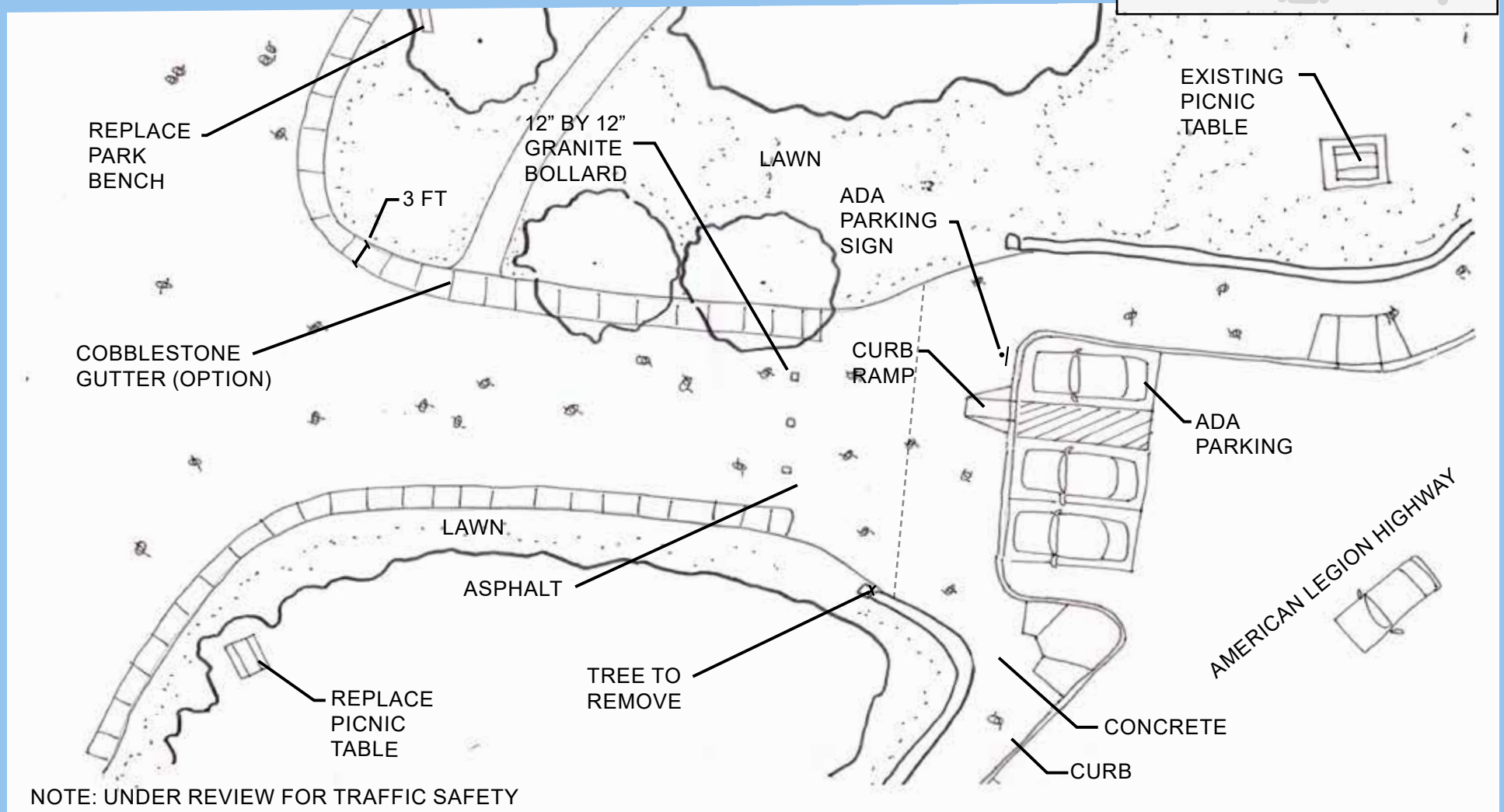
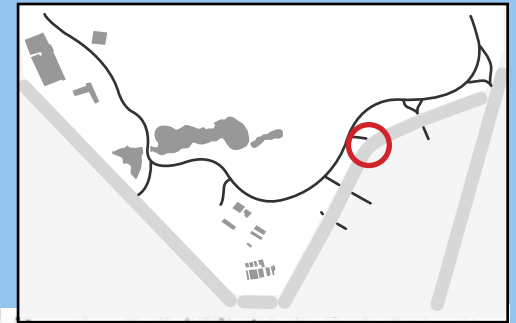
PEDESTRIAN ENTRANCE AT MORTON STREET



FORMER CARRIAGE ENTRANCE OF CIRCUIT DRIVE AT AMERICAN LEGION HIGHWAY

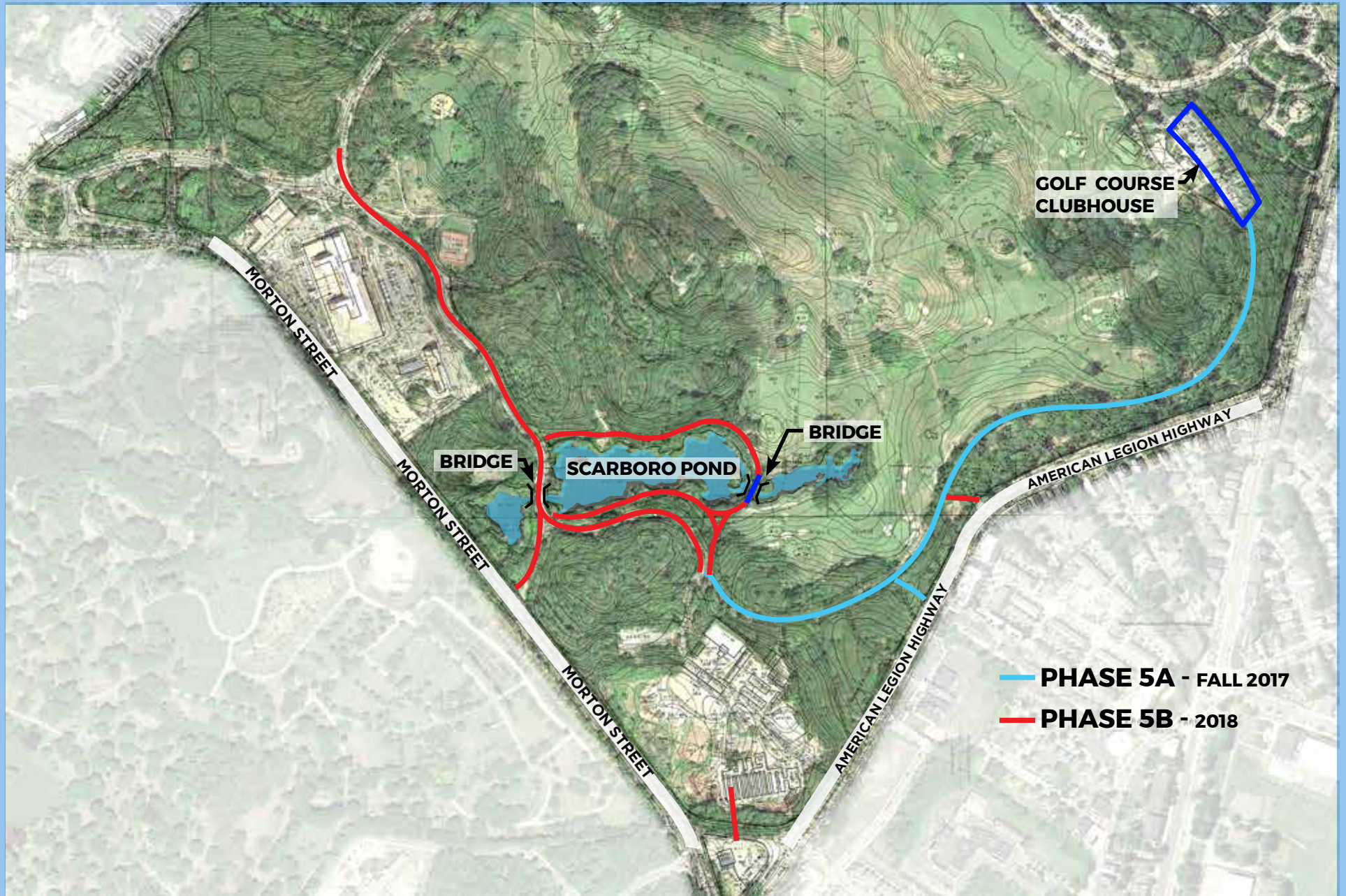


FORMER CARRIAGE ENTRANCE OF CIRCUIT DRIVE AT AMERICAN LEGION HIGHWAY



NOTE: UNDER REVIEW FOR TRAFFIC SAFETY

PROJECT OVERVIEW





LISTENING & DISCUSSION

**Help us build great parks by providing input
on what matters to you.**



THANK YOU.

Lauren Bryant, Project Manager
lauren.bryant@boston.gov or 617-961-3019

Marchelle Jacques-Yarde, Outreach Coordinator, External Affairs
marchelle.jacques-yarde@boston.gov or 617-961-3006

Kyle Zick, Kyle Zick Landscape Architecture, Inc.

For questions, maintenance requests or concerns regarding any of our parks
contact 311

