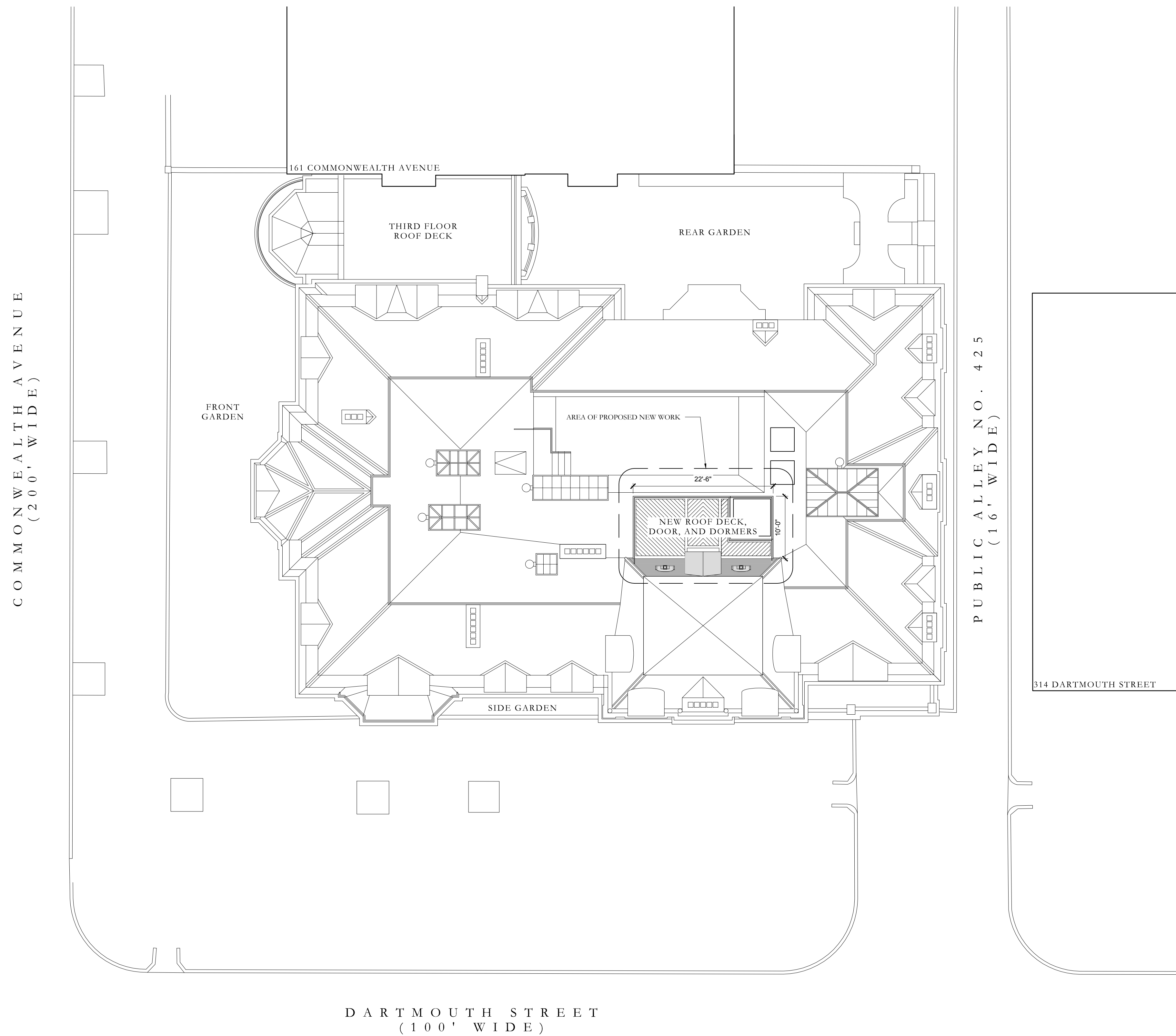


THIS DRAWING MUST BE REVIEWED BY THE GENERAL CONTRACTOR OR APPROPRIATE SUBCONTRACTORS.

ANY ERRORS, OMISSIONS OR DISCREPANCIES MUST BE REPORTED TO HAMADY ARCHITECTS PRIOR TO THE START OF CONSTRUCTION.

© THIS DRAWING IS THE PROPERTY OF HAMADY ARCHITECTS. ALL USAGE MUST CONFORM TO NATIONAL, STATE, AND LOCAL COPYRIGHT LAWS AND REGULATIONS.



BBAC Submission

DATE: November 1, 2017

Additions and Alterations  
to the  
Ames Mansion  
306 Dartmouth Street  
Boston, Massachusetts

Site  
Plan

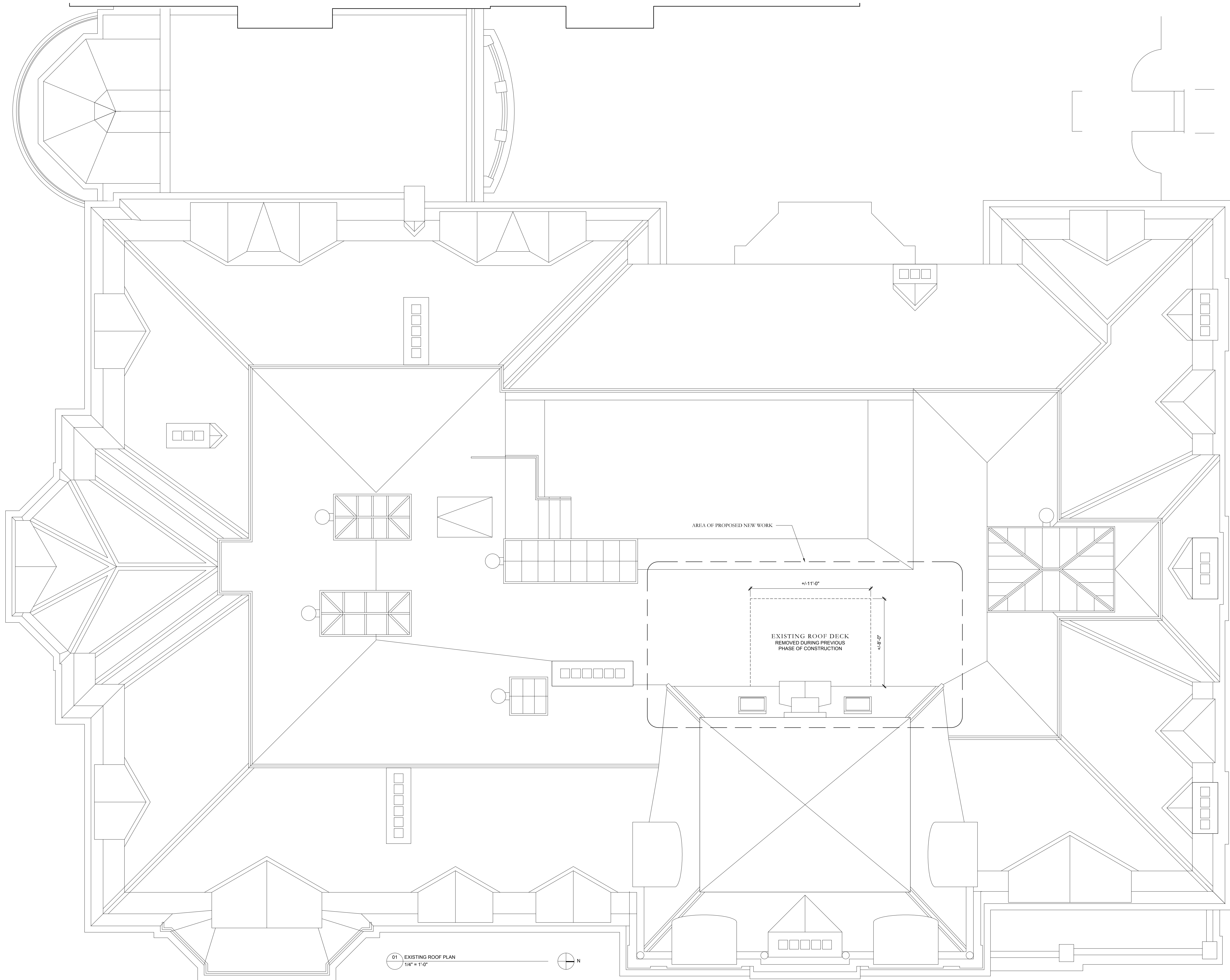
SCALE: 1" = 10'



THIS DRAWING MUST BE REVIEWED BY  
THE GENERAL CONTRACTOR OR APPR-  
PRIATE SUBCONTRACTORS.

ANY ERRORS, OMISSIONS OR DISCREPA-  
NCIES MUST BE REPORTED TO HAMADY  
ARCHITECTS PRIOR TO THE START OF  
CONSTRUCTION.

© THIS DRAWING IS THE PROPERTY OF  
HAMADY ARCHITECTS. ALL USAGE  
MUST CONFORM TO NATIONAL, STATE,  
AND LOCAL COPYRIGHT LAWS AND  
REG-  
ULATIONS.



01 EXISTING ROOF PLAN  
1/4" = 1'-0" N

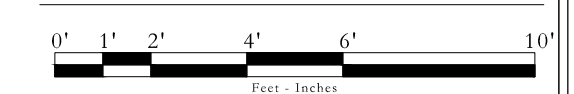
BBAC Submission

DATE: November 1, 2017

Additions and Alterations  
to the  
Ames Mansion  
306 Dartmouth Street  
Boston, Massachusetts

Existing  
Roof  
Plan

SCALE: 1/4" = 1'-0"



THIS DRAWING MUST BE REVIEWED BY  
THE GENERAL CONTRACTOR OR APPR-  
PRIATE SUBCONTRACTORS.

ANY ERRORS, OMISSIONS OR DISCREPA-  
NCIES MUST BE REPORTED TO HAMADY  
ARCHITECTS PRIOR TO THE START OF  
CONSTRUCTION.

© THIS DRAWING IS THE PROPERTY OF  
HAMADY ARCHITECTS. ALL USAGE  
MUST CONFORM TO NATIONAL, STATE,  
AND LOCAL COPYRIGHT LAWS AND  
REG-  
ULATIONS.



AREA OF NEW WORK  
SEE ENLARGED ELEVATIONS  
FOR NOTATION

65'-10 1/2"  
MEASURED FROM APPROXIMATE GARAGE ALLEY ELEVATION  
TO TOP OF EXISTING ROOF ACCESS PEDIMENT

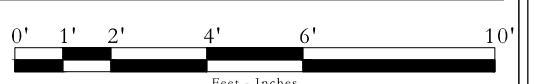
BBAC Submission

DATE: November 1, 2017

Additions and Alterations  
to the  
Ames Mansion  
306 Dartmouth Street  
Boston, Massachusetts

Existing  
West Elevation

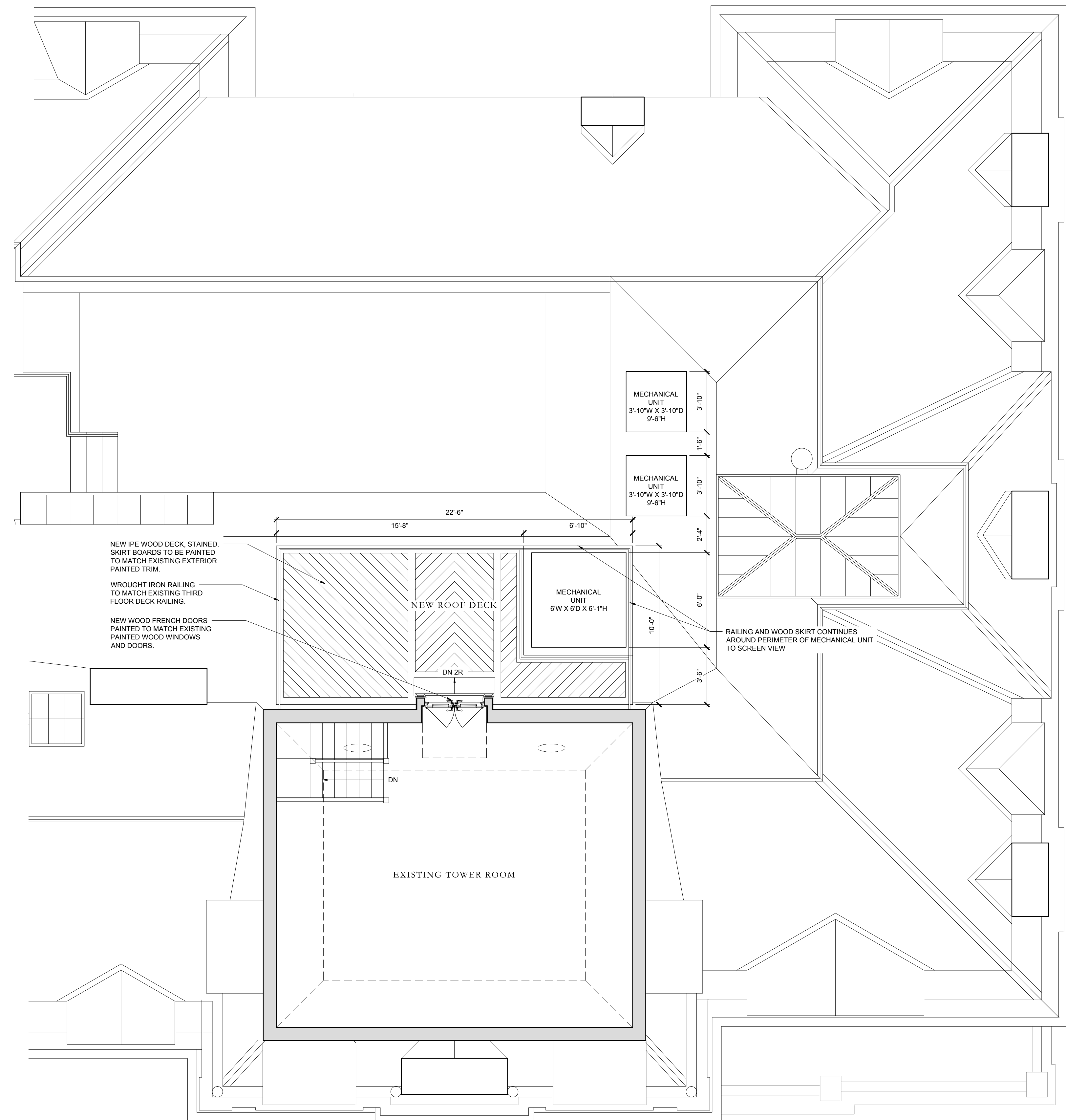
SCALE: 1/4" = 1'-0"



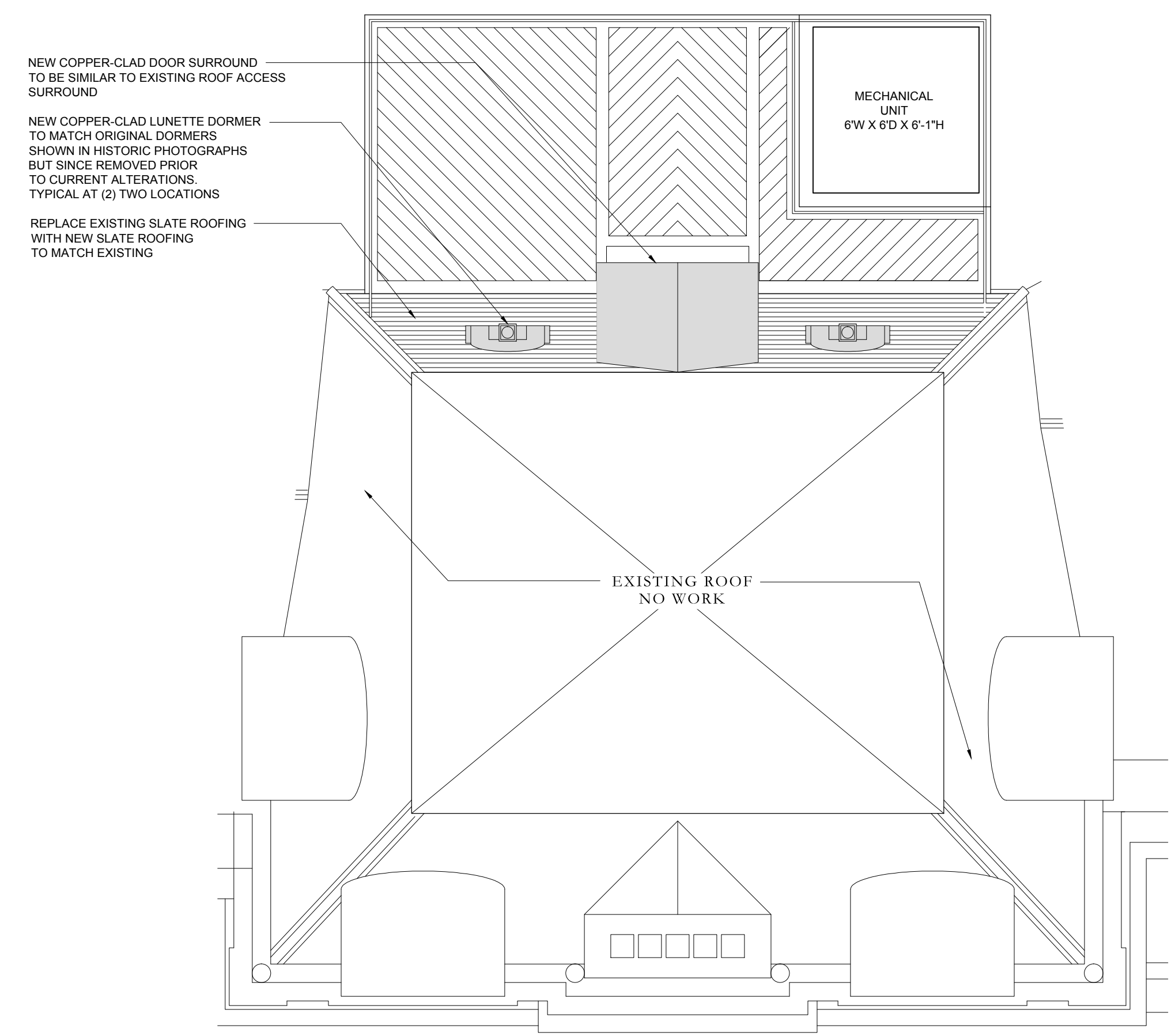
THIS DRAWING MUST BE REVIEWED BY THE GENERAL CONTRACTOR OR APPROPRIATE SUBCONTRACTORS.

ANY ERRORS, OMISSIONS OR DISCREPANCIES MUST BE REPORTED TO HAMADY ARCHITECTS PRIOR TO THE START OF CONSTRUCTION.

© THIS DRAWING IS THE PROPERTY OF HAMADY ARCHITECTS. ALL USAGE MUST CONFORM TO NATIONAL, STATE, AND LOCAL COPYRIGHT LAWS AND REGULATIONS.



02 PARTIAL FLOOR PLAN AT TOWER  
1/4" = 1'-0"



01 PARTIAL ROOF PLAN AT TOWER  
1/4" = 1'-0"

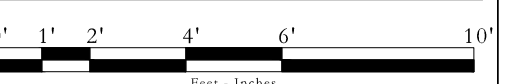
BBAC Submission

DATE: November 1, 2017

Additions and Alterations  
to the  
Ames Mansion  
306 Dartmouth Street  
Boston, Massachusetts

Roof Plans

SCALE: 1/4" = 1'-0"



THIS DRAWING MUST BE REVIEWED BY THE GENERAL CONTRACTOR OR APPROPRIATE SUBCONTRACTORS.

ANY ERRORS, OMISSIONS OR DISCREPANCIES MUST BE REPORTED TO HAMADY ARCHITECTS PRIOR TO THE START OF CONSTRUCTION.

© THIS DRAWING IS THE PROPERTY OF HAMADY ARCHITECTS. ALL USAGE MUST CONFORM TO NATIONAL, STATE, AND LOCAL COPYRIGHT LAWS AND REGULATIONS.



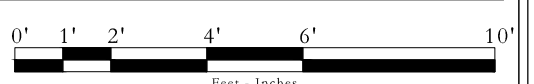
BBAC Submission

DATE: November 1, 2017

Additions and Alterations  
to the  
Ames Mansion  
306 Dartmouth Street  
Boston, Massachusetts

Proposed  
West Elevation

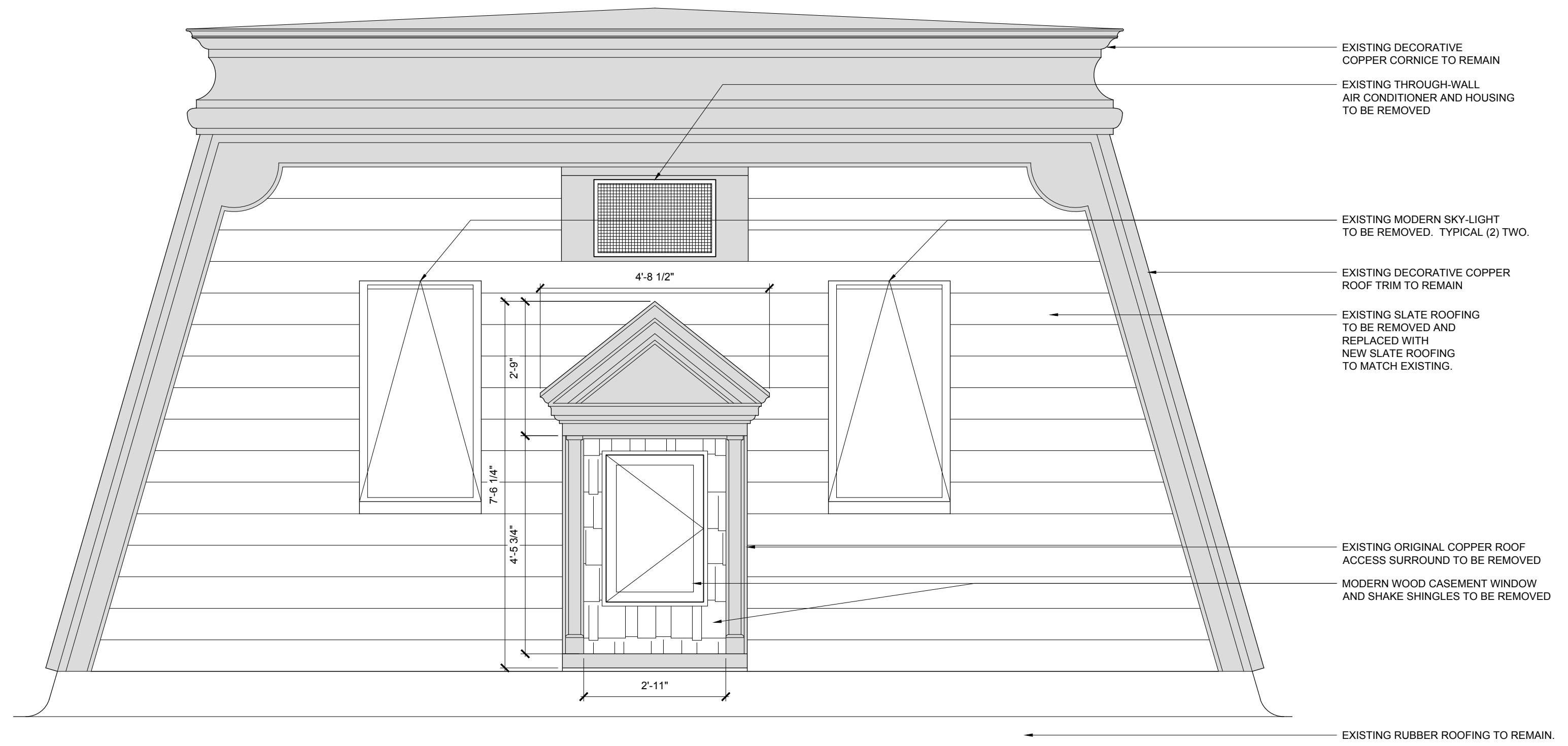
SCALE: 1/4" = 1'-0"



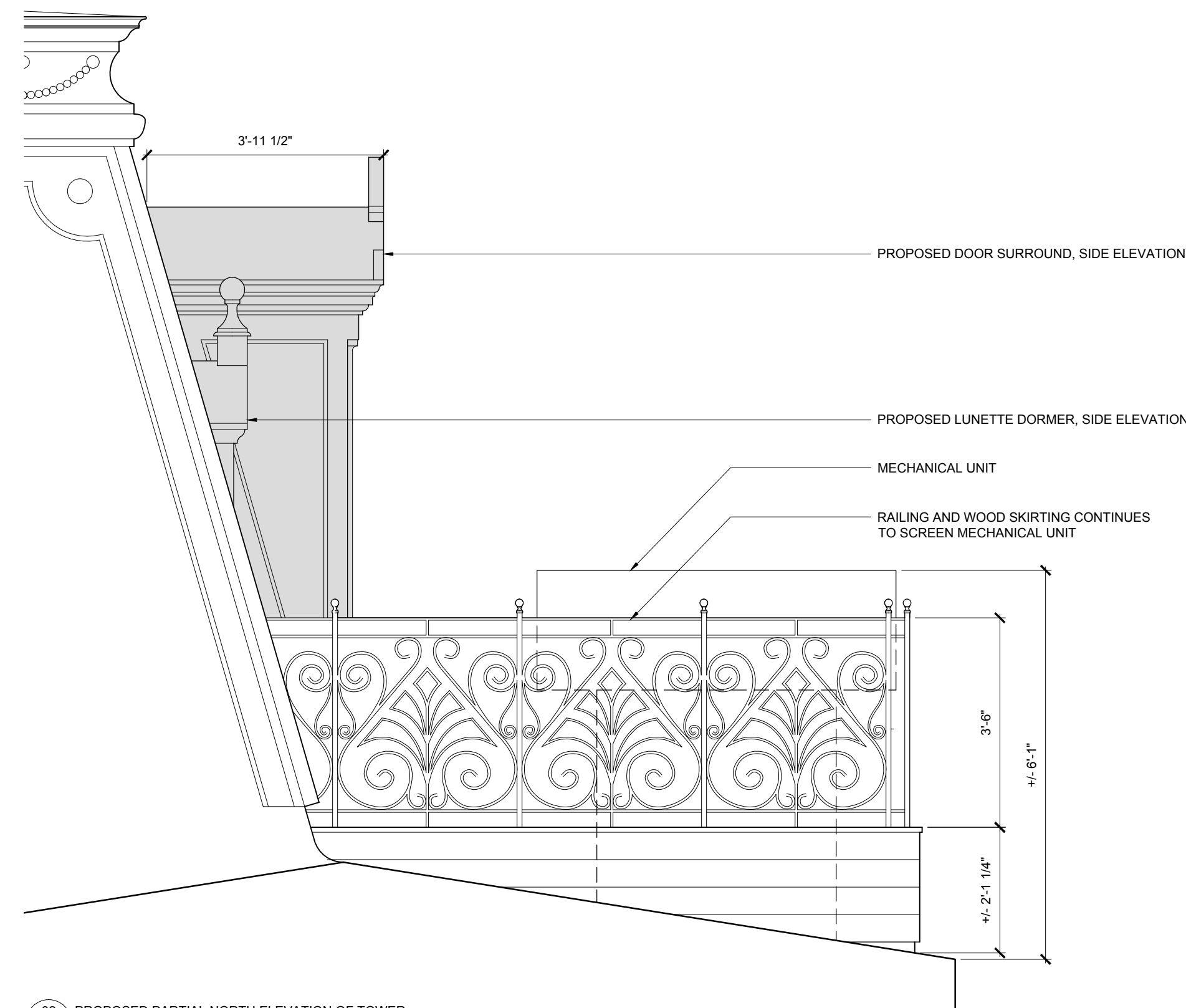
THIS DRAWING MUST BE REVIEWED BY THE GENERAL CONTRACTOR OR APPROPRIATE SUBCONTRACTORS.

ANY ERRORS, OMISSIONS OR DISCREPANCIES MUST BE REPORTED TO HAMADY ARCHITECTS PRIOR TO THE START OF CONSTRUCTION.

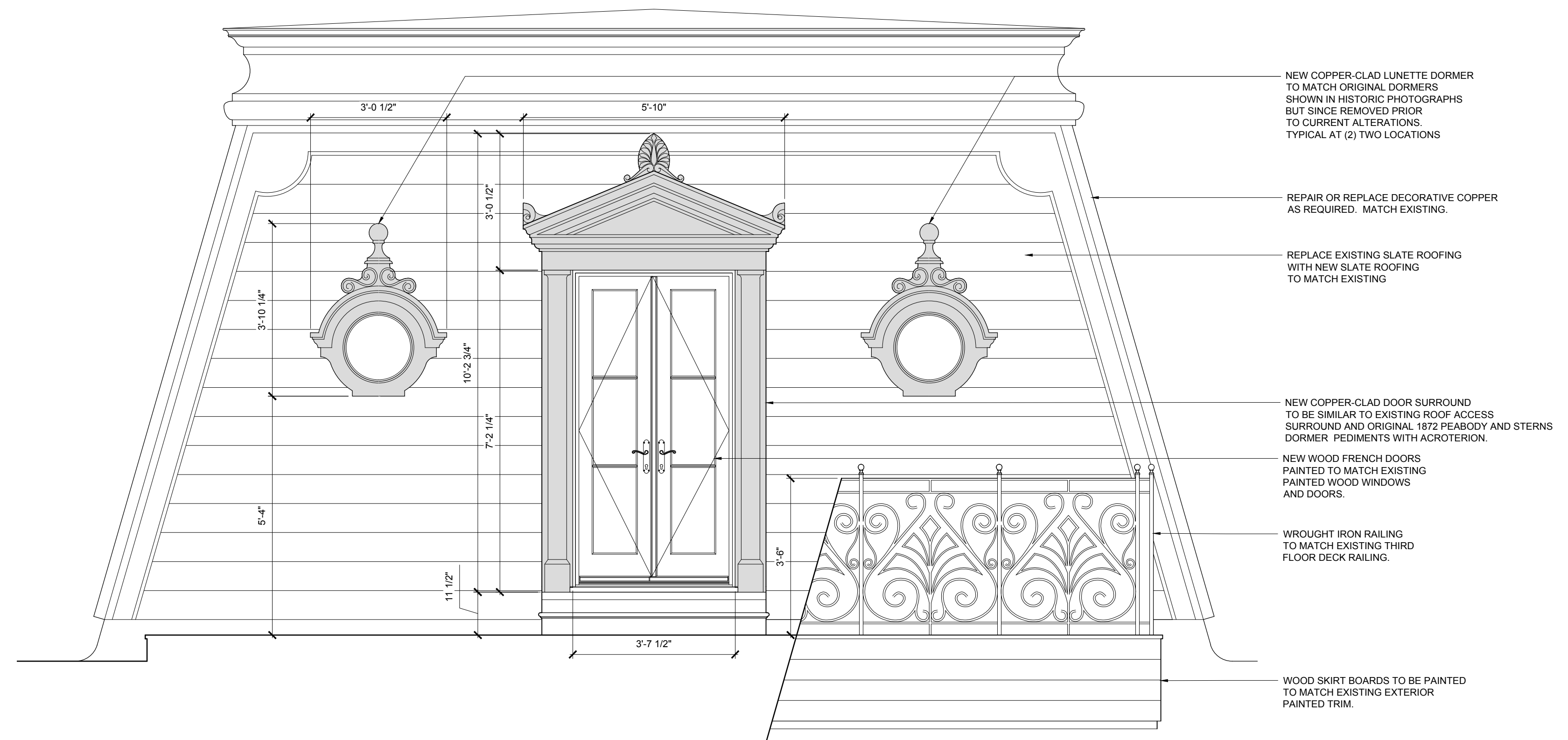
© THIS DRAWING IS THE PROPERTY OF HAMADY ARCHITECTS. ALL USAGE MUST CONFORM TO NATIONAL, STATE, AND LOCAL COPYRIGHT LAWS AND REGULATIONS.



01 EXISTING PARTIAL WEST ELEVATION OF TOWER  
1/2" = 1'-0"



02 PROPOSED PARTIAL NORTH ELEVATION OF TOWER  
1/2" = 1'-0"



03 PROPOSED PARTIAL WEST ELEVATION OF TOWER  
1/2" = 1'-0"

BBAC Submission

DATE: November 1, 2017

Additions and Alterations  
to the  
Ames Mansion  
306 Dartmouth Street  
Boston, Massachusetts

Enlarged  
Elevations

SCALE: 1/2" = 1'-0"



THIS DRAWING MUST BE REVIEWED BY THE GENERAL CONTRACTOR OR APPROPRIATE SUBCONTRACTORS.

ANY ERRORS, OMISSIONS OR DISCREPANCIES MUST BE REPORTED TO HAMADY ARCHITECTS PRIOR TO THE START OF CONSTRUCTION.

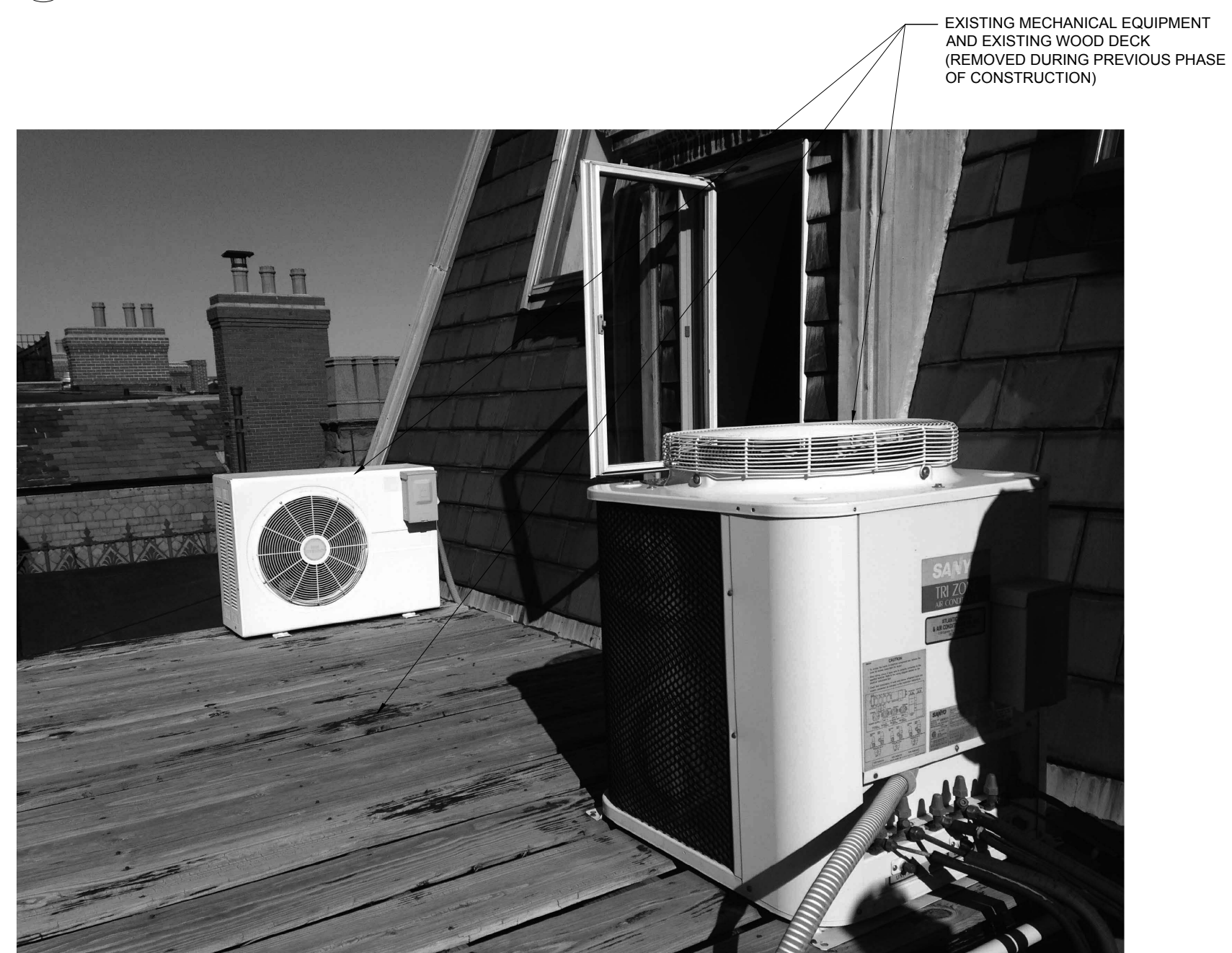
© THIS DRAWING IS THE PROPERTY OF HAMADY ARCHITECTS. ALL USAGE MUST CONFORM TO NATIONAL, STATE, AND LOCAL COPYRIGHT LAWS AND REGULATIONS.



01 EXISTING CONDITIONS OF TOWER ROOF ACCESS  
N.T.S.



01 EXISTING CONDITIONS OF TOWER ROOF ACCESS  
N.T.S.



01 EXISTING CONDITIONS OF TOWER ROOF ACCESS  
N.T.S.



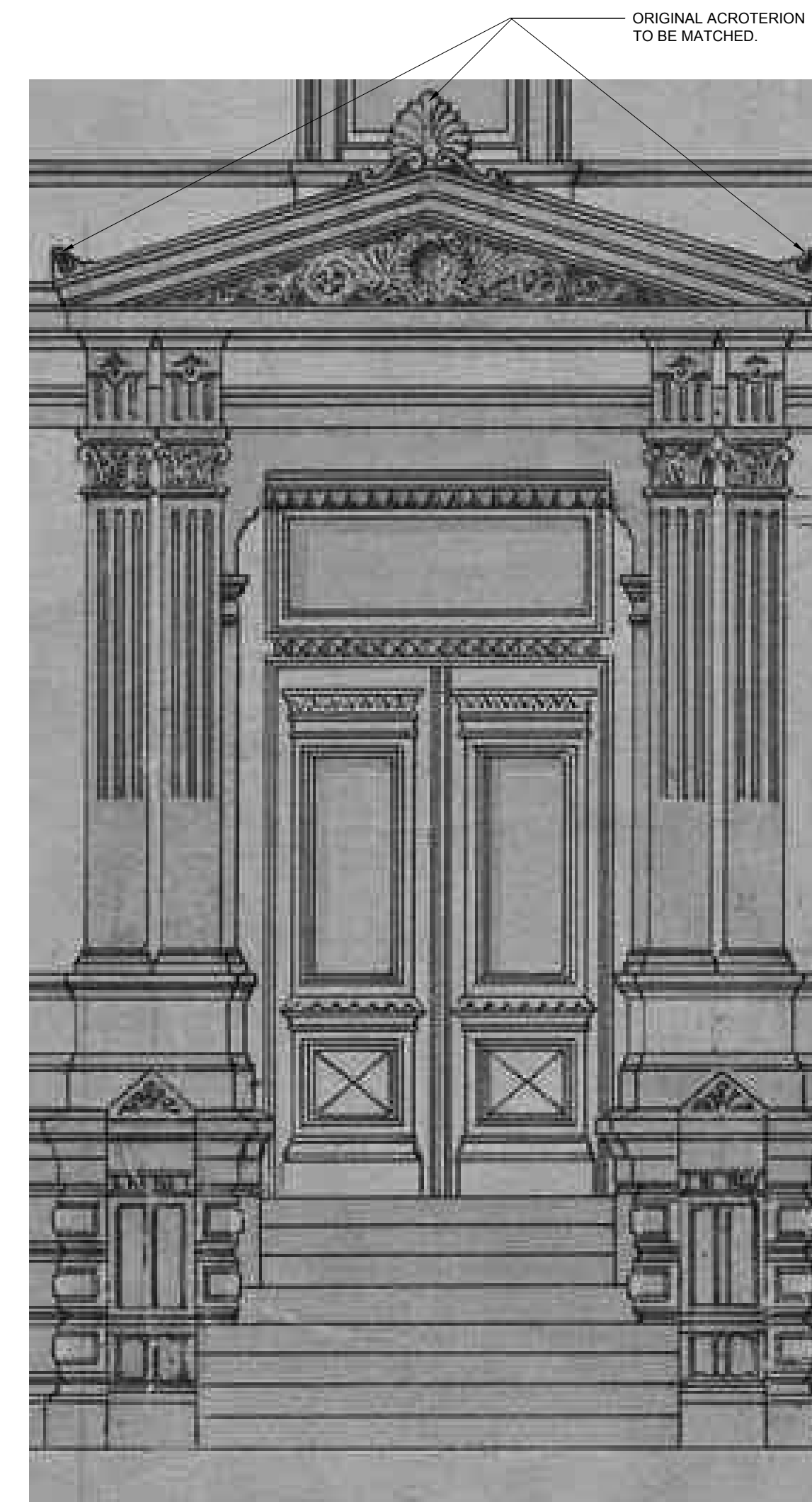
01 HISTORIC PHOTOGRAPH - CIRCA 1885  
N.T.S.



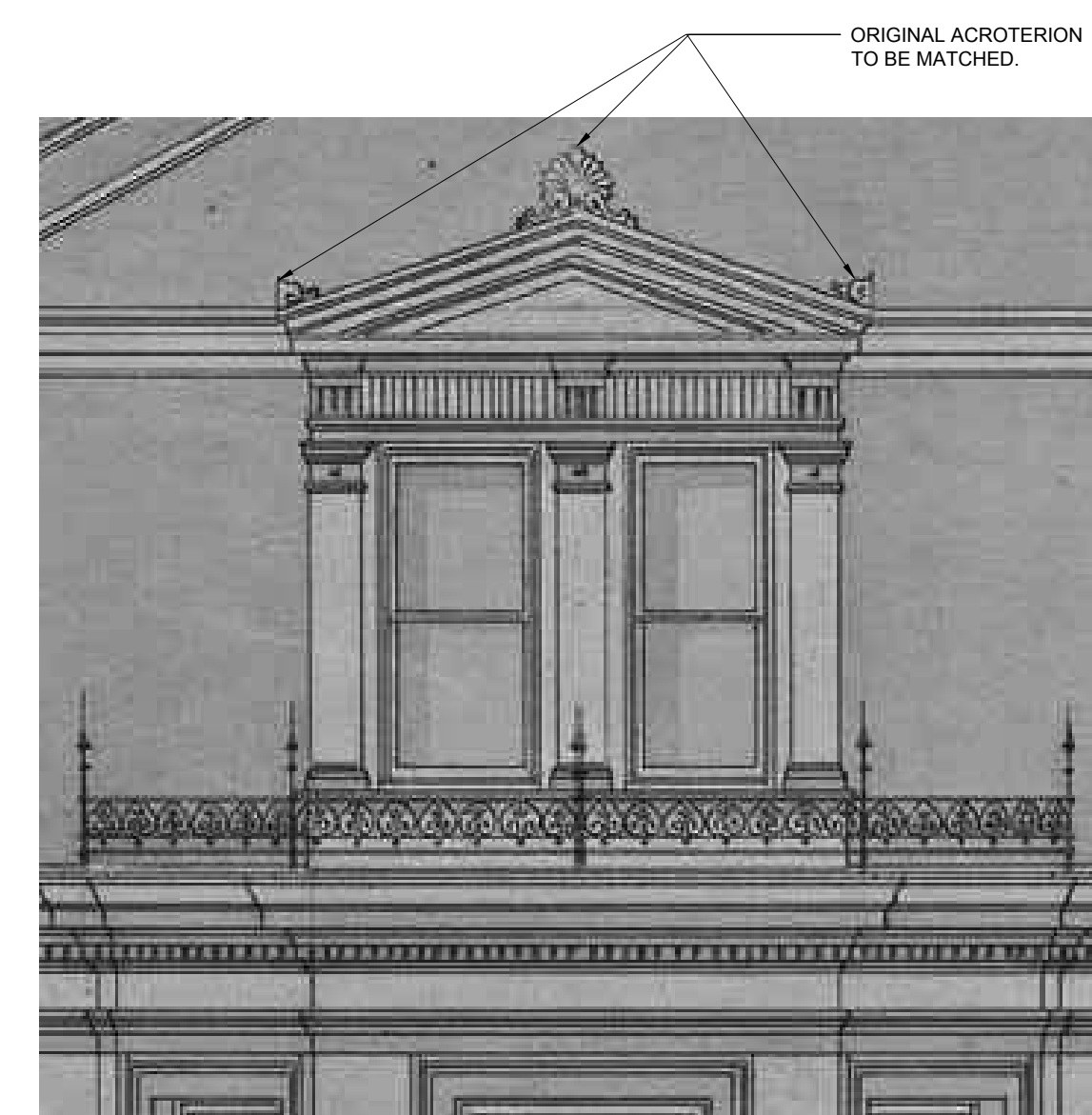
01 HISTORIC PHOTOGRAPH - CIRCA 1885  
N.T.S.



01 HISTORIC PHOTOGRAPH - CIRCA 1885  
N.T.S.



01 PARTIAL ELEVATION - 1872 PEABODY AND STEARNS DRAWINGS  
N.T.S.  
ELEVATION OF 1872 FRONT DOOR, REMOVED DURING THE 1882 RENOVATION UNDER F.L. AMES



01 PARTIAL ELEVATION - 1872 PEABODY AND STEARNS DRAWINGS  
N.T.S.

BBAC Submission

DATE: September 8, 2017

Additions and Alterations  
to the  
Ames Mansion  
306 Dartmouth Street  
Boston, Massachusetts

Existing and Historic  
Photographs

SCALE: N.T.S.