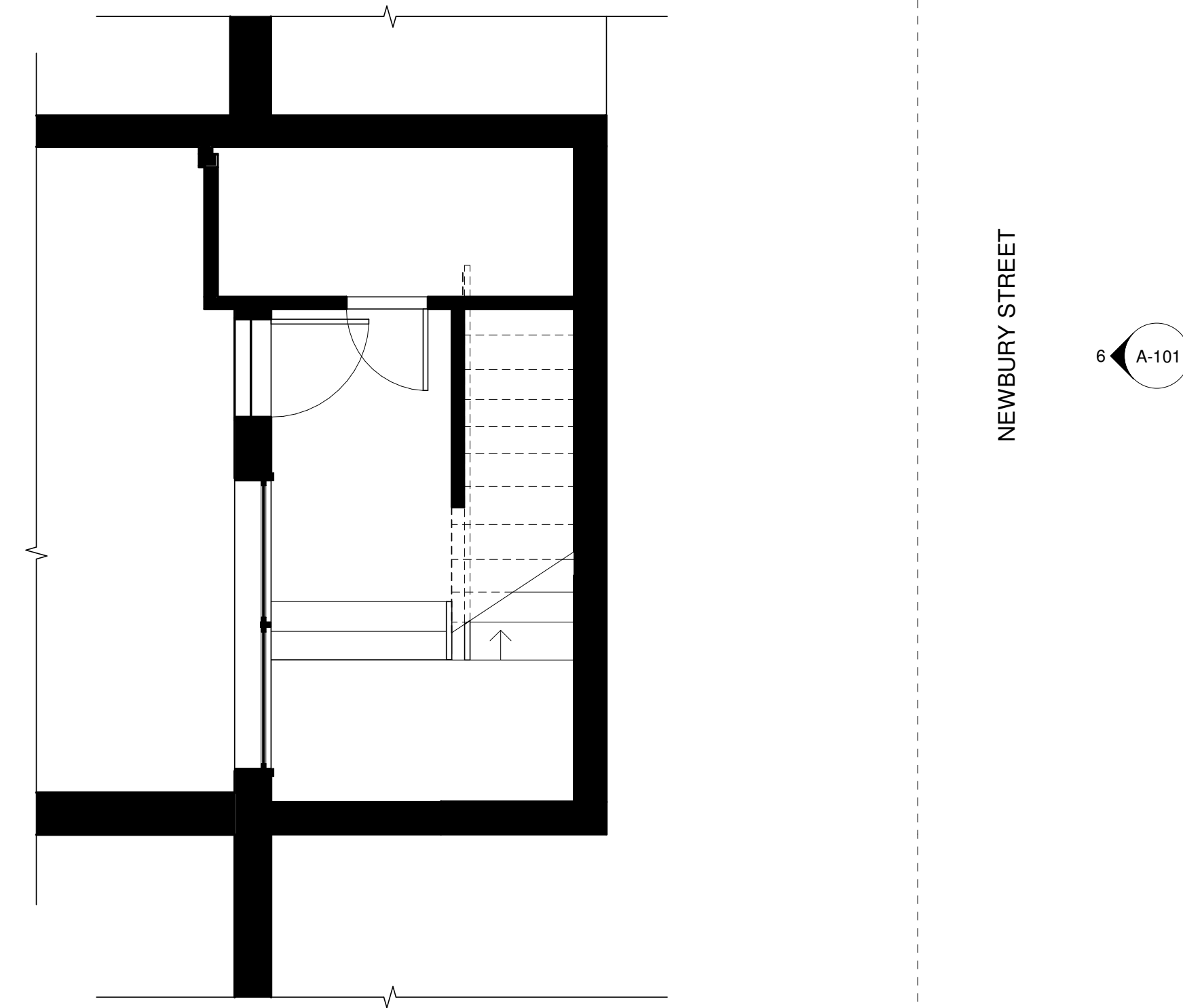
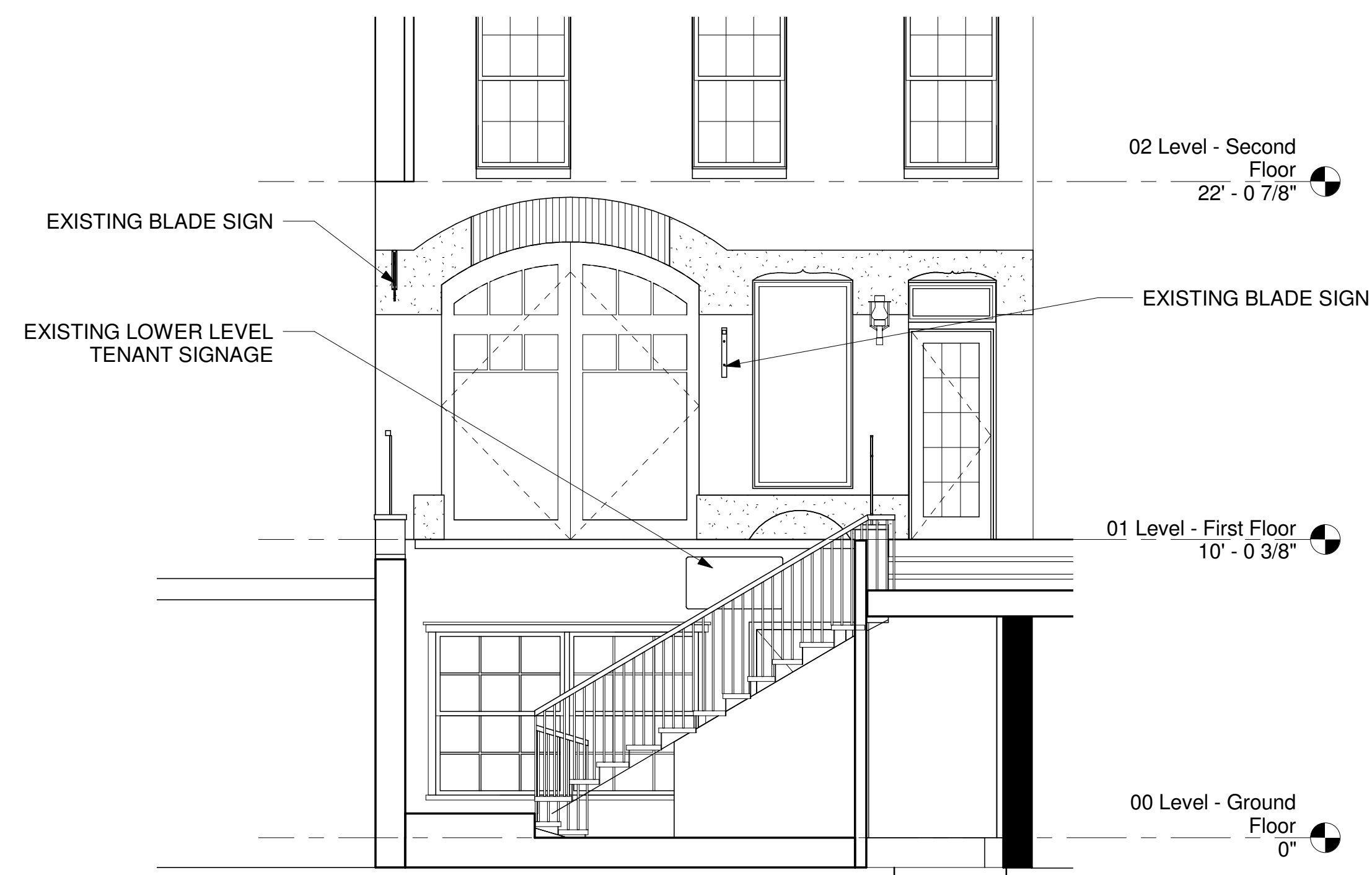


5 EXISTING FIRST FLOOR PLAN
1/4" = 1'-0"



4 Ground Floor Existing Plan
1/4" = 1'-0"



6 EXISTING SOUTH ELEVATION
1/4" = 1'-0"

328 Newbury Street

Jamestown LP

Boston, MA 02116

© Silverman Trykowski Associates, Inc. expressly reserves its common law copyright and other property rights in these plans. These plans are not to be reproduced, changed or copied in any form or manner whatsoever nor are they to be assigned to any third party without first obtaining the expressed written permission and consent of Silverman Trykowski Associates, Inc.



125 Broad Street, 7th Floor
Boston, MA 02110
t: 617.426.1501
f: 617.426.5491

www.sta-design.com

Project Status



No.	Description	Date

Scale	1/4" = 1'-0"
Project Number	2017.25
Date	07/19/17
Drawn by	AD
Checked by	TT

A-101
328 Newbury Street_Existing Conditions



328 Newbury Street

Jamestown LP

Boston, MA 02116

© Silverman Trykowski Associates, Inc. expressly reserves its common law copyright and other property rights in these plans. These plans are not to be reproduced, changed or copied in any form or manner whatsoever nor are they to be assigned to any third party without first obtaining the expressed written permission and consent of Silverman Trykowski Associates, Inc.



125 Broad Street, 7th Floor
Boston, MA 02110
t: 617.426.1501
f: 617.426.5491

www.sta-design.com

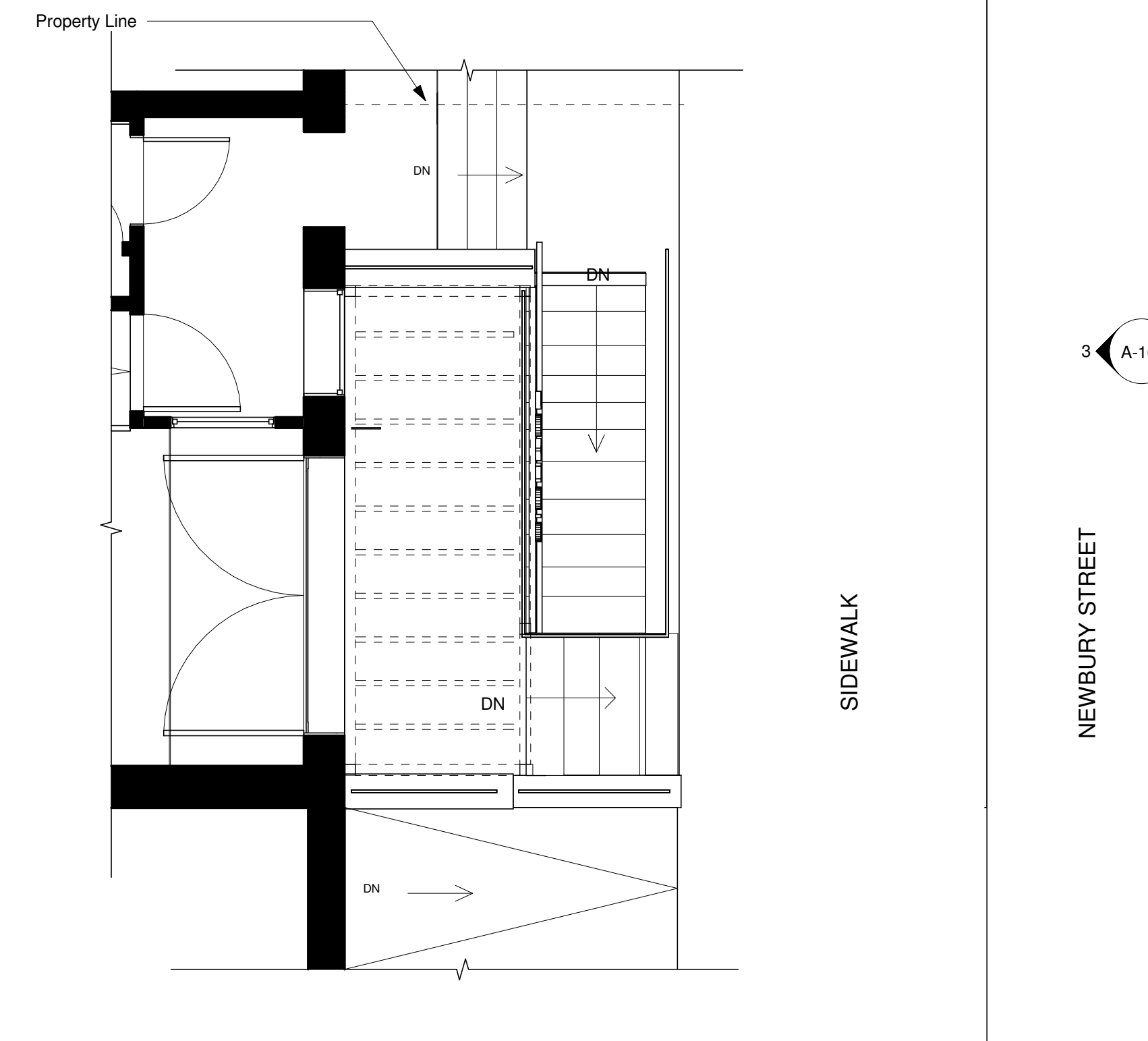
Project Status



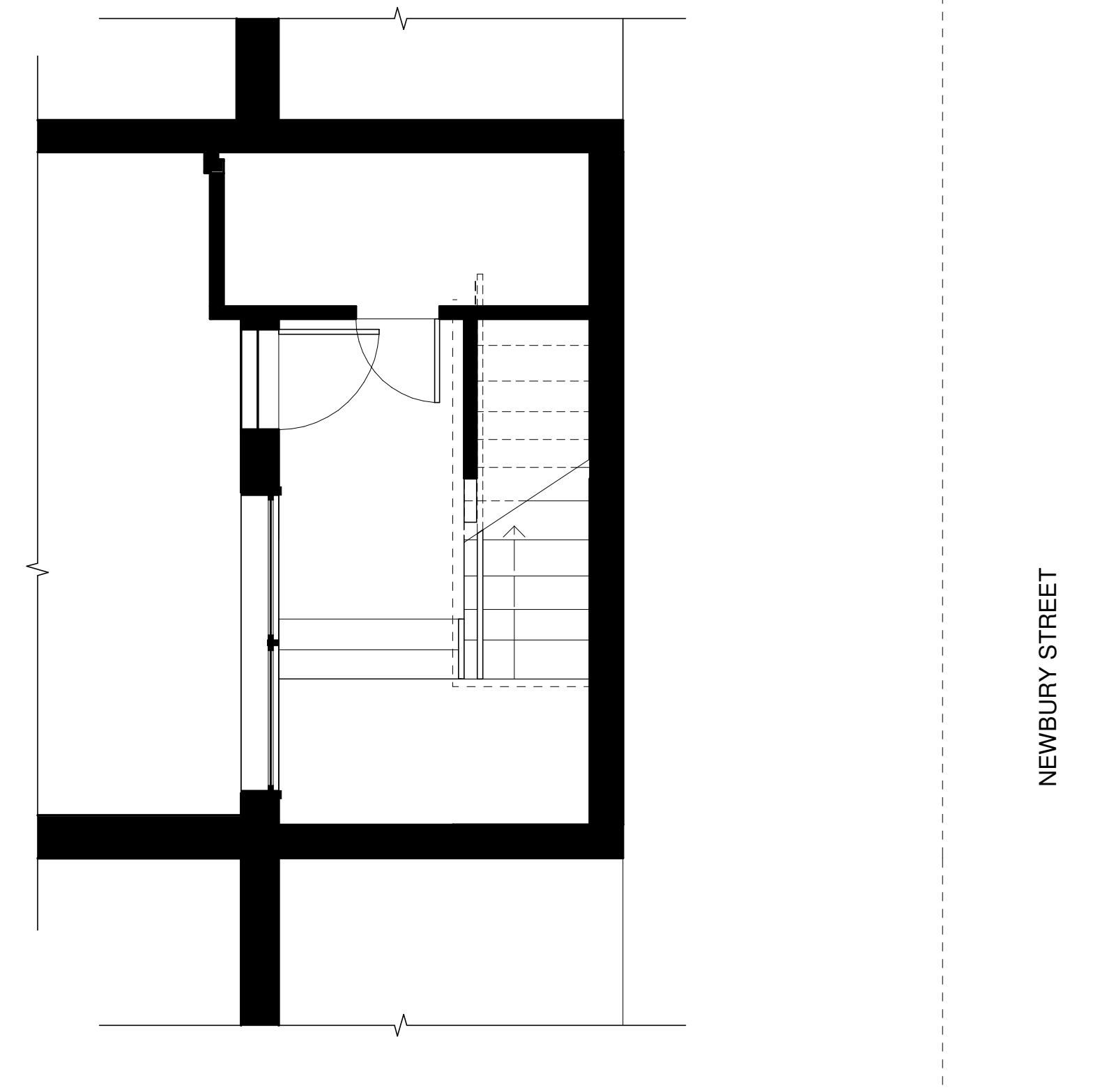
No.	Description	Date

Scale As indicated
Project Number 2017.25
Date 3/22/17
Drawn by AD
Checked by TT

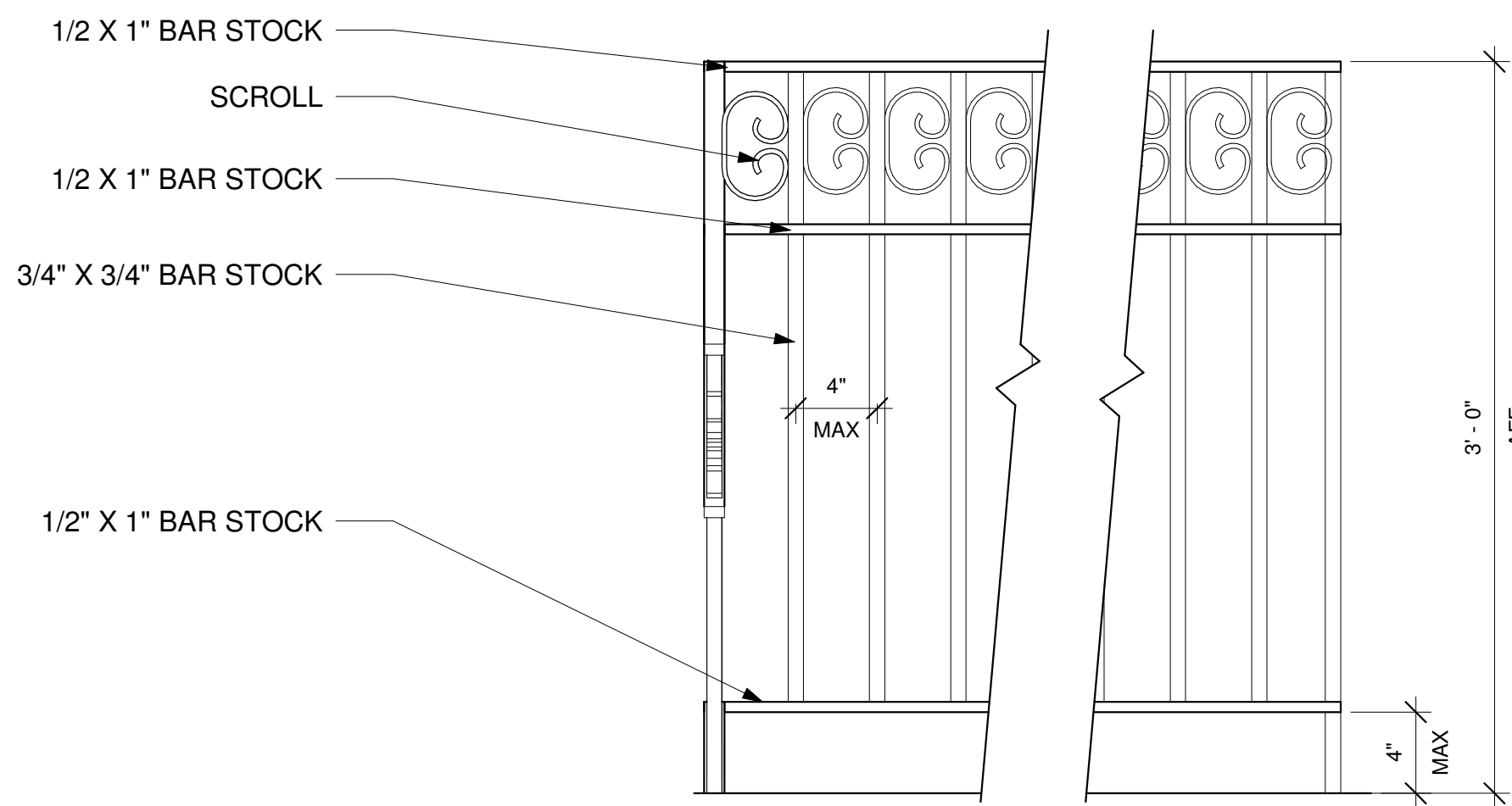
A-102
328 Newbury Street_Proposed Conditions



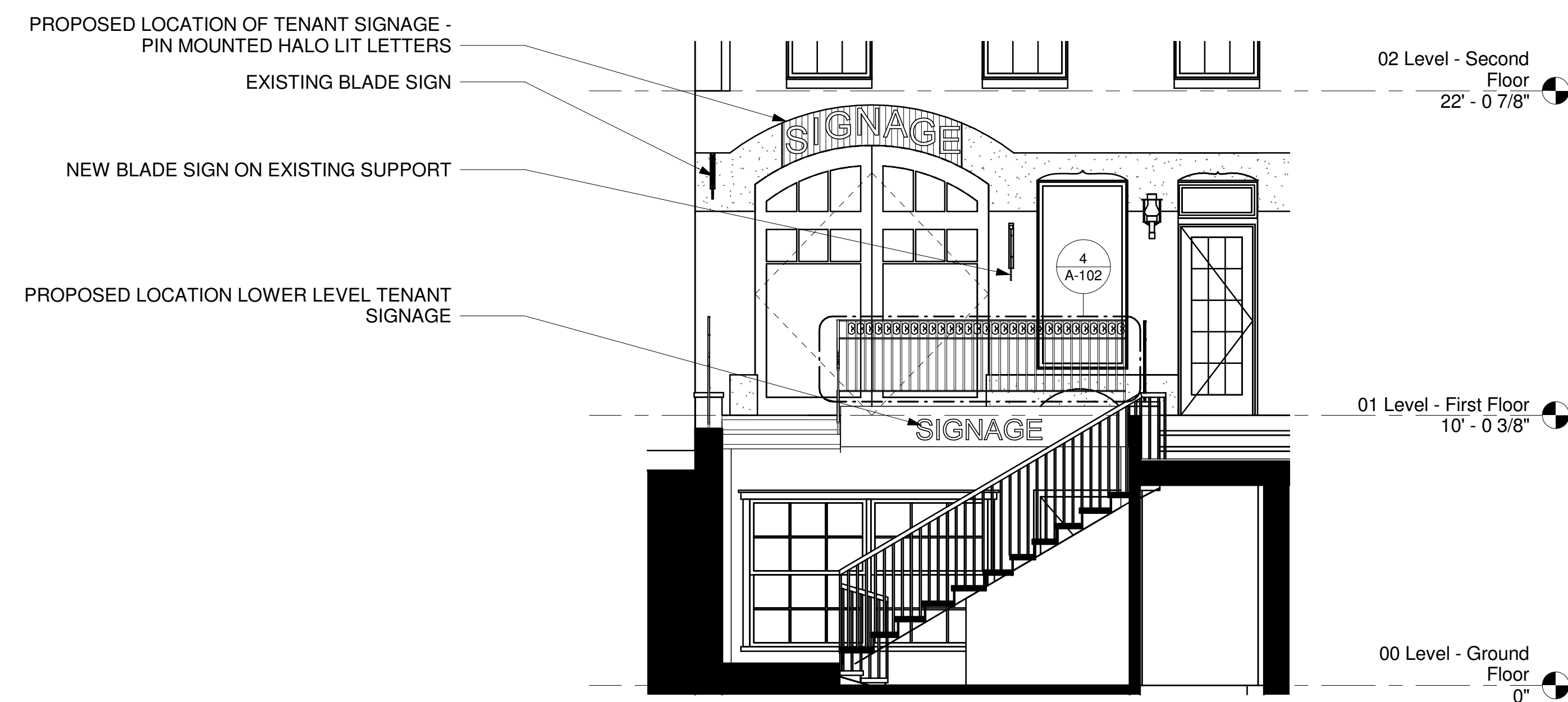
2 1st Floor Partition Plan, Proposed
1/4" = 1'-0"



1 Ground Level Proposed
1/4" = 1'-0"



4 WROUGHT IRON RAIL
1 1/2" = 1'-0"



3 South Elevation, Proposed Conditions
1/4" = 1'-0"

328 Newbury Street

Jamestown LP

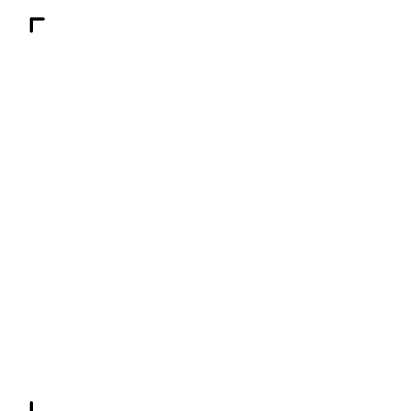
Boston, MA 02116

© Silverman Trykowski Associates, Inc. expressly reserves its common law copyright and other property rights in these plans. These plans are not to be reproduced, changed or copied in any form or manner whatsoever nor are they to be assigned to any third party without first obtaining the expressed written permission and consent of Silverman Trykowski Associates, Inc.



125 Broad Street, 7th Floor
Boston, MA 02110
t: 617.426.1501
f: 617.426.5491

www.sta-design.com



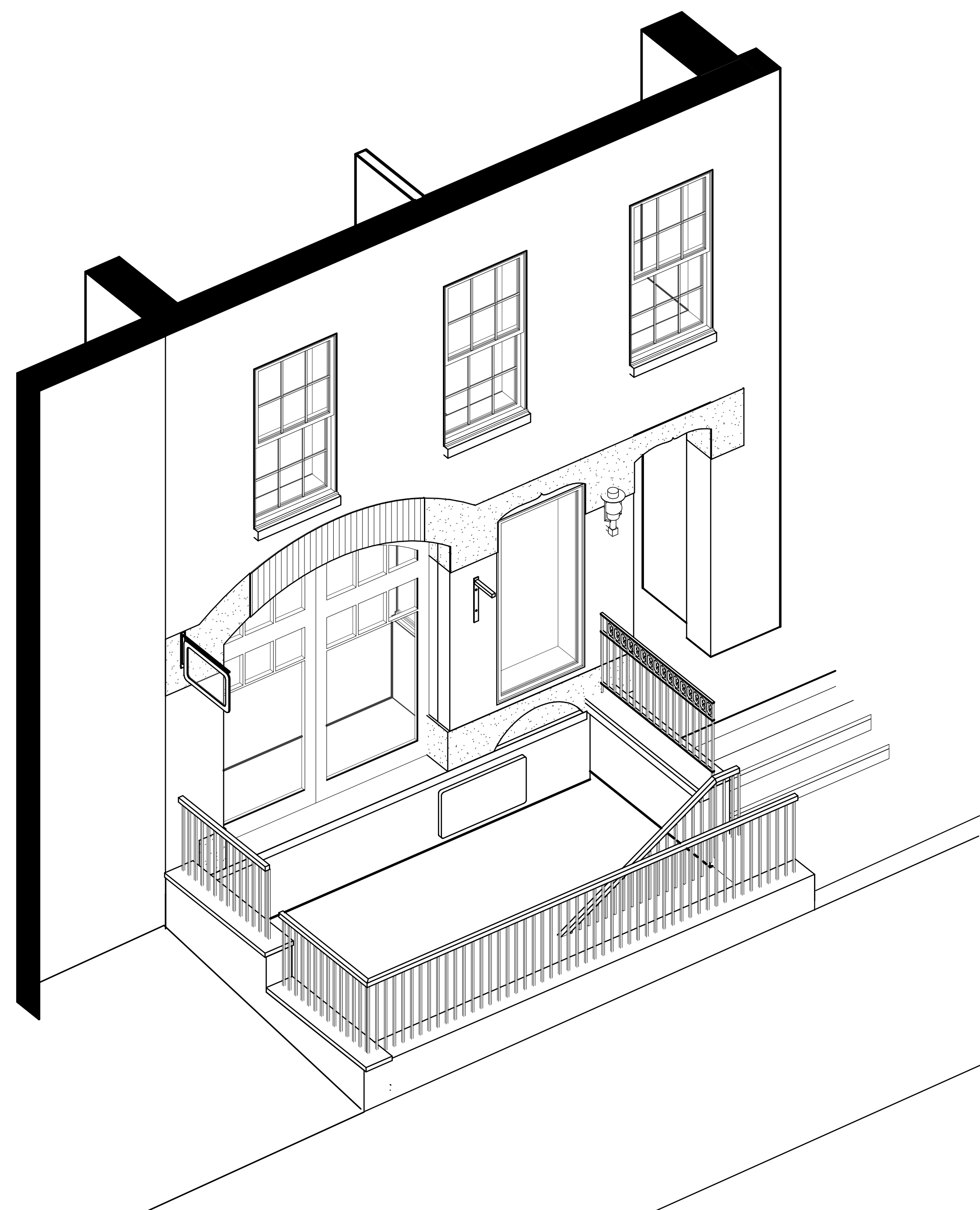
Project Status



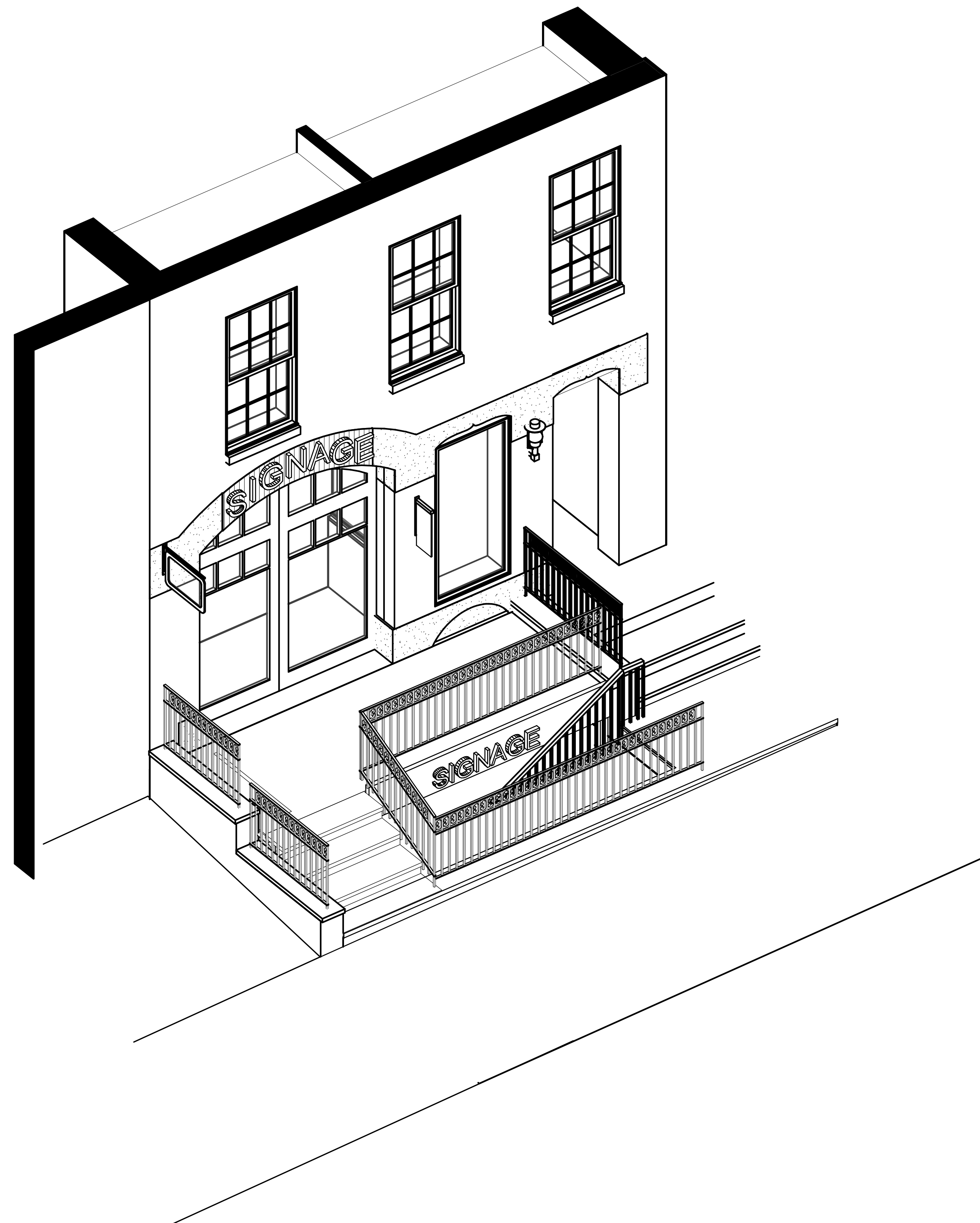
No.	Description	Date

Scale
Project Number 2017.25
Date 05/30/17
Drawn by Author
Checked by Checker

A-103
BIRDS EYE VIEWS



1 BIRDS EYE VIEW - EXISTING



2 BIRDS EYE VIEW - PROPOSED

328 Newbury Street

Jamestown LP

Boston, MA 02116

© Silverman Trykowski Associates, Inc. expressly reserves its common law copyright and other property rights in these plans. These plans are not to be reproduced, changed or copied in any form or manner whatsoever nor are they to be assigned to any third party without first obtaining the expressed written permission and consent of Silverman Trykowski Associates, Inc.



125 Broad Street, 7th Floor
Boston, MA 02110
t: 617.426.1501
f: 617.426.5491

www.sta-design.com



EXISTING PERSPECTIVE



PROPOSED PERSPECTIVE

- WROUGHT IRON RAIL WITH SCROLLS
- PROPOSED BLASE SIGN ON EXISTING SUPPORT
- PROPOSED LOWER TENANT SIGNAGE
- PAINTED BREAK METAL CAP
- STONE TREADS TO MATCH EXISTING
- RISERS WITH PARGED FINISH TO MATCH EXISTING
- BLUESTONE PATIO

Project Status



No.	Description	Date

Scale	
Project Number	2017.25
Date	05/30/17
Drawn by	BMS
Checked by	TT

A-104
PERSPECTIVES