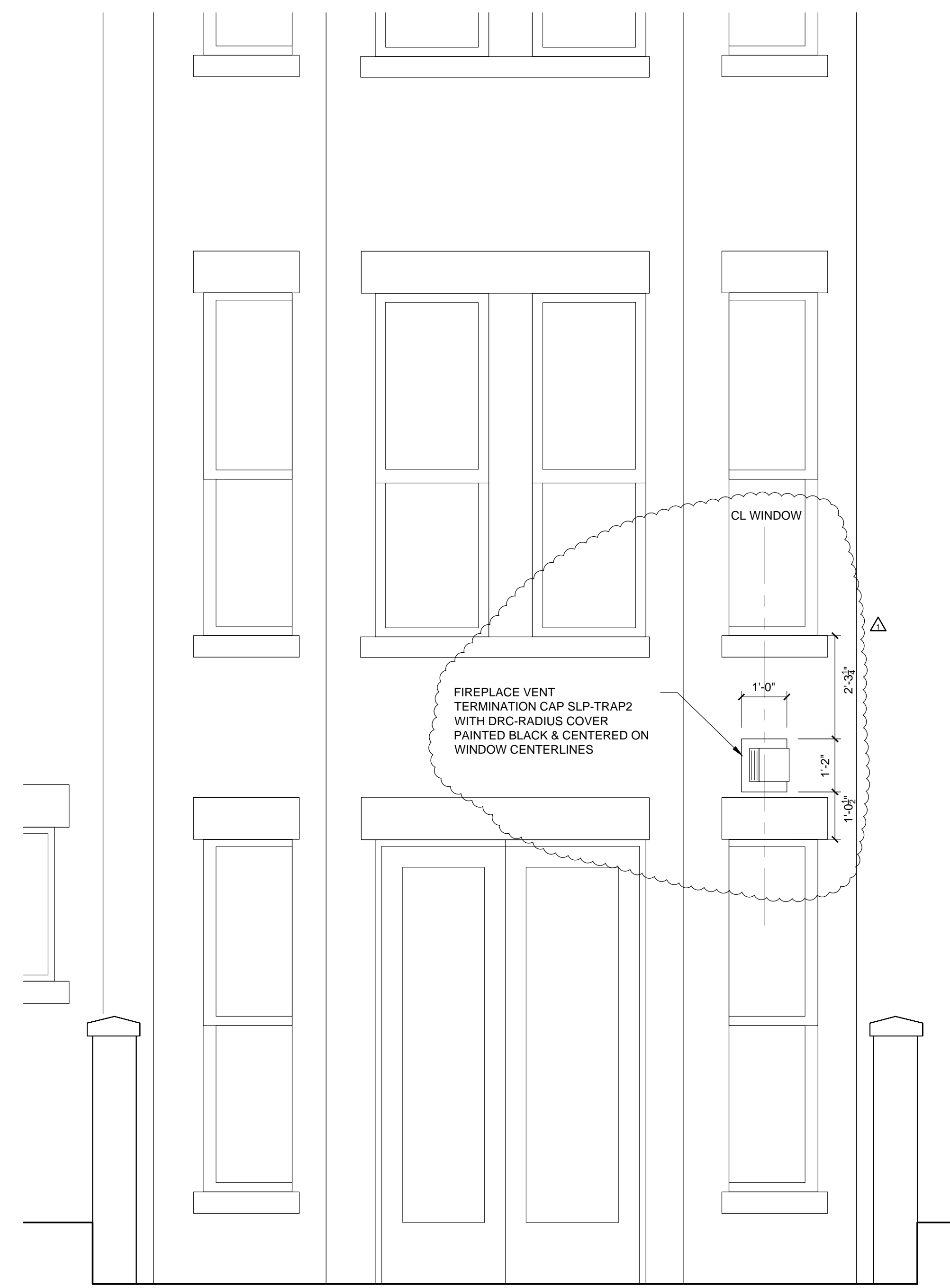


| DRAWING SUBMISSIONS | | |
|---------------------|------------|-----------------------|
| NO. | DATE: | ISSUED FOR: |
| | 06/30/2017 | CONSTRUCTION SET |
| | 07/07/2017 | BBAC REVIEW |
| ▲ | 07/13/2017 | BBAC REVIEW (REVISED) |
| | | |
| | | |
| | | |
| | | |
| | | |
| | | |



1 EXTERIOR ELEVATION
 Scale: 3/16" = 1'-0"



2 ELEVATION DETAIL
 Scale: 1/2" = 1'-0"

TERMINATION CAP



HORIZONTAL VENTING
 GAS TERMINATION CAP

Horizontal Termination Cap

Use this multi-purpose cap to finish off any Direct Vent gas fireplace or stove. Shrouds are also available to blend with siding materials or for enhanced safety.

**DVP-TRAP1/DVP-TRAP2/SLP-TRAP1/
 SLP-TRAP2/SLP-HHW2**

APPROX SIZE: 12"W x 15"H



HORIZONTAL VENTING
 GAS SHROUD

Decorative Radius Cover

This decorative, paintable shroud easily blends with exterior siding and provides a secondary safety barrier for heated exhaust

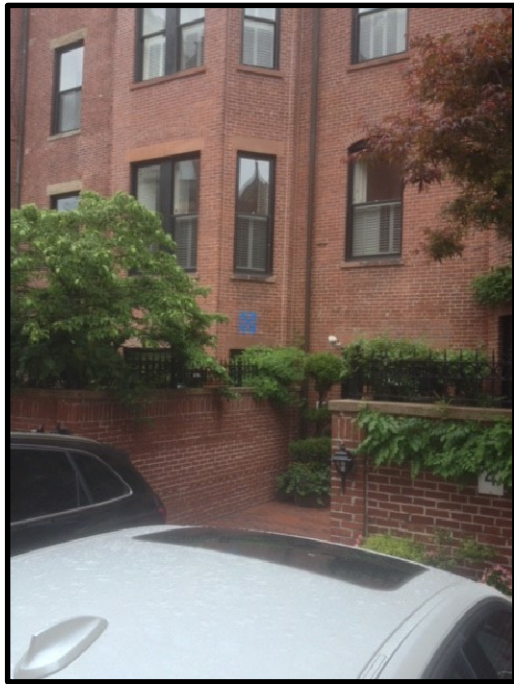
DRC-RADIUS (For use with DVP-TRAP1, DVP-TRAP2, SLP-TRAP1 or SLP-TRAP2)

APPROX SIZE: 14"W x 17"H
 PAINTED BLACK

PROJECT:
PORTER RESIDENCE
 202 COMM AVE - U1
 BOSTON, MA

TITLE:
 EXTERIOR ELEVATION

| | |
|--------------------|--------------------------|
| JOB NO. | DRAWN BY: CS |
| DATE: 6/30/2017 | SCALE: 1/4" = 1' - 0" |
| DWG. NO. | A3.1 |
| ORIGINAL SIZE | SHEET NO. D |



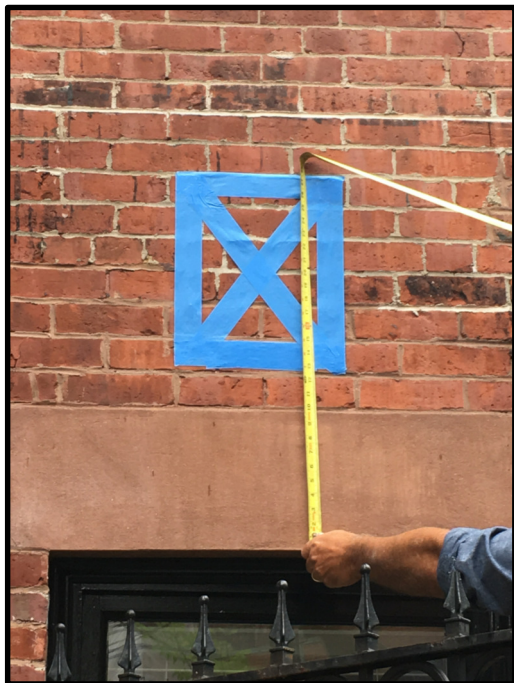
VIEW 1
Scale: N/A



VIEW 2
Scale: N/A



VIEW 3
Scale: N/A



VIEW 4
Scale: N/A



VIEW 5
Scale: N/A



VIEW 6
Scale: N/A



| REV: | DATE: | ISSUED FOR: |
|------|------------|-----------------------|
| 1 | 07/13/2017 | BBAC REVIEW (REVISED) |
| 2 | | |
| 3 | | |
| 4 | | |

| | |
|----------|---|
| PROJECT: | PORTER RESIDENCE 202 COMM AVE - U1 BOSTON, MA |
|----------|---|

| | |
|--------|-----------------------------------|
| TITLE: | FIREPLACE VENT LOCATION PHOTOS |
|--------|-----------------------------------|

| | | | | | |
|-----------|------------|----------------|-----|-----------|--------------|
| DRAWN BY: | ED | ORIGINAL SIZE: | B | DWG. NO: | |
| DATE: | 07/10/2017 | SCALE: | NTS | SHEET NO: | ____ OF ____ |

Copyright © Woodmeister Master Builders 2015 all rights reserved. WARNING: Woodmeister is not responsible for and will void warranty on any product that is not operated according to manufacturer specifications. Safe operation is the responsibility of the end user. Any intentional alternate methods of proper use will result in the end user being responsible for any damages incurred.

P:\POD01 - Porter - Boston\03_DESIGN\B_Working Drawings\01_Drawing Set\A3.1 Exterior Elevation.dwg, 7/13/2017 12:46:17 PM, ERD263



Public Alley 433

Public Alley 433





Public Alley 433 <

> Public Alley 433

VENT TERMINATION LOCATED





Public Alley 433

Public Alley 433





VENT TERMINATION LOCATED HERE



VENT TERMINATION LOCATED