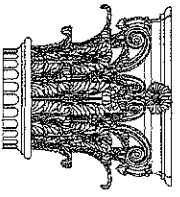




[IMAGE 1] 21 SOUTH RUSSELL STREET FRONT FACADE PHOTO





**PAULI & URIBE**  
**ARCHITECTS LLC**  
 Classic Architecture  
 Interior Design  
 121 Mount Vernon Street  
 Boston, Massachusetts, 02108  
 617.227.0934 • www.pauli-uribe.com

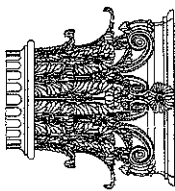
**21 SOUTH RUSSELL STREET**  
 BOSTON, MA 02114

SHEET TITLE:  
 EXISTING CONDITIONS  
 FRONT ELEVATION

DATE: JUL 7 26, 2017  
 SCALE: AS NOTED  
 DRAWN: JGUR & RJP  
 CHECKED: JGUR & RJP

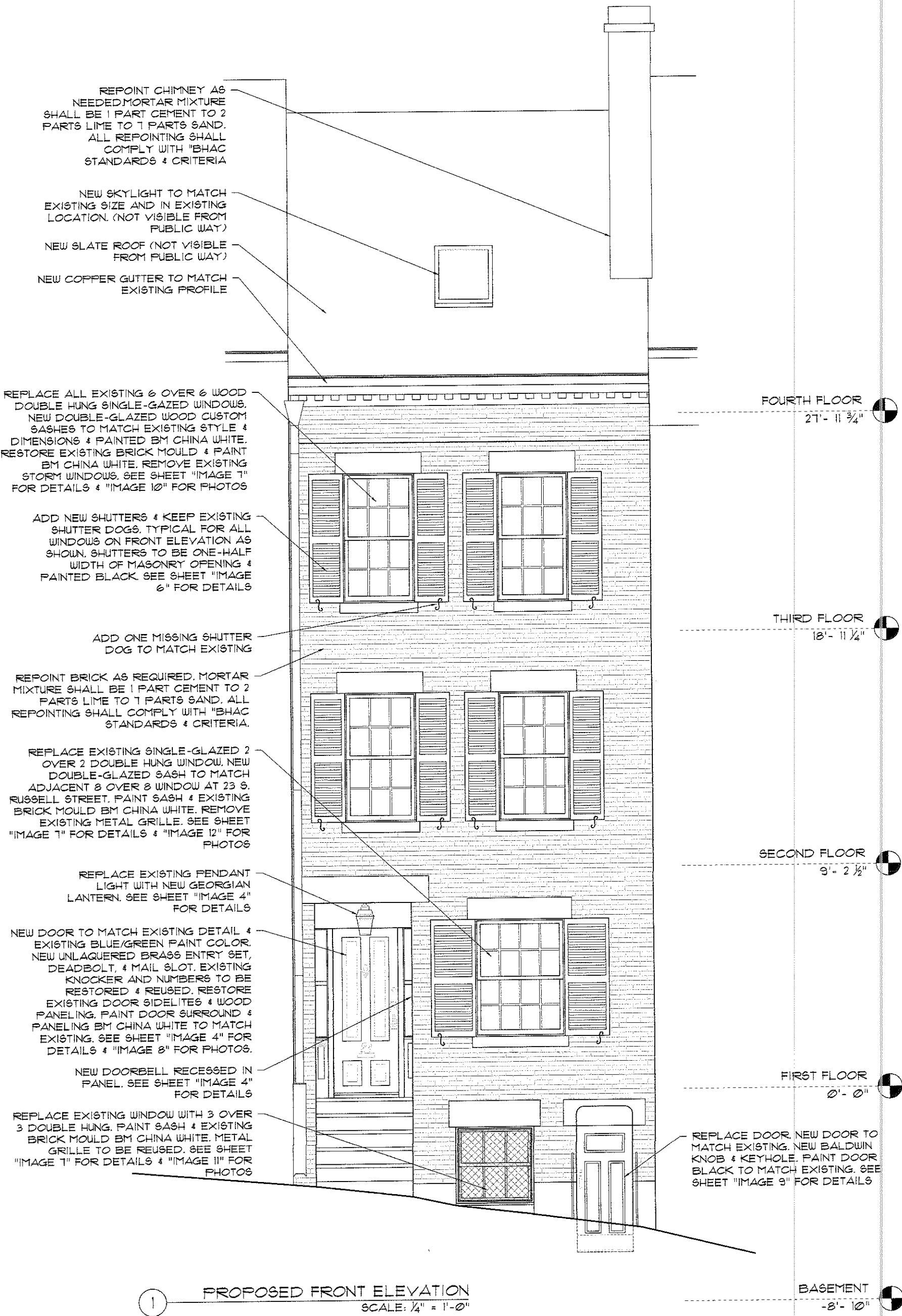
SHEET NO.  
**EC-1**





**PAULI & URIBE**  
**ARCHITECTS LLC**  
 Classic Architecture  
 Interior Design  
 121 Mount Vernon Street  
 Boston, Massachusetts, 02108  
 617 227 0954 • www.pauli-uribe.com

**21 SOUTH RUSSELL STREET**  
 BOSTON, MA 02114



**PROPOSED FRONT ELEVATION**  
 SCALE: 1/4" = 1'-0"

SHEET TITLE:  
 PROPOSED FRONT ELEVATION

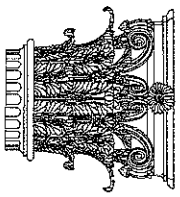
DATE: JUL 7 26, 2011

SCALE: AS NOTED

DRAWN: JGUR & RJP

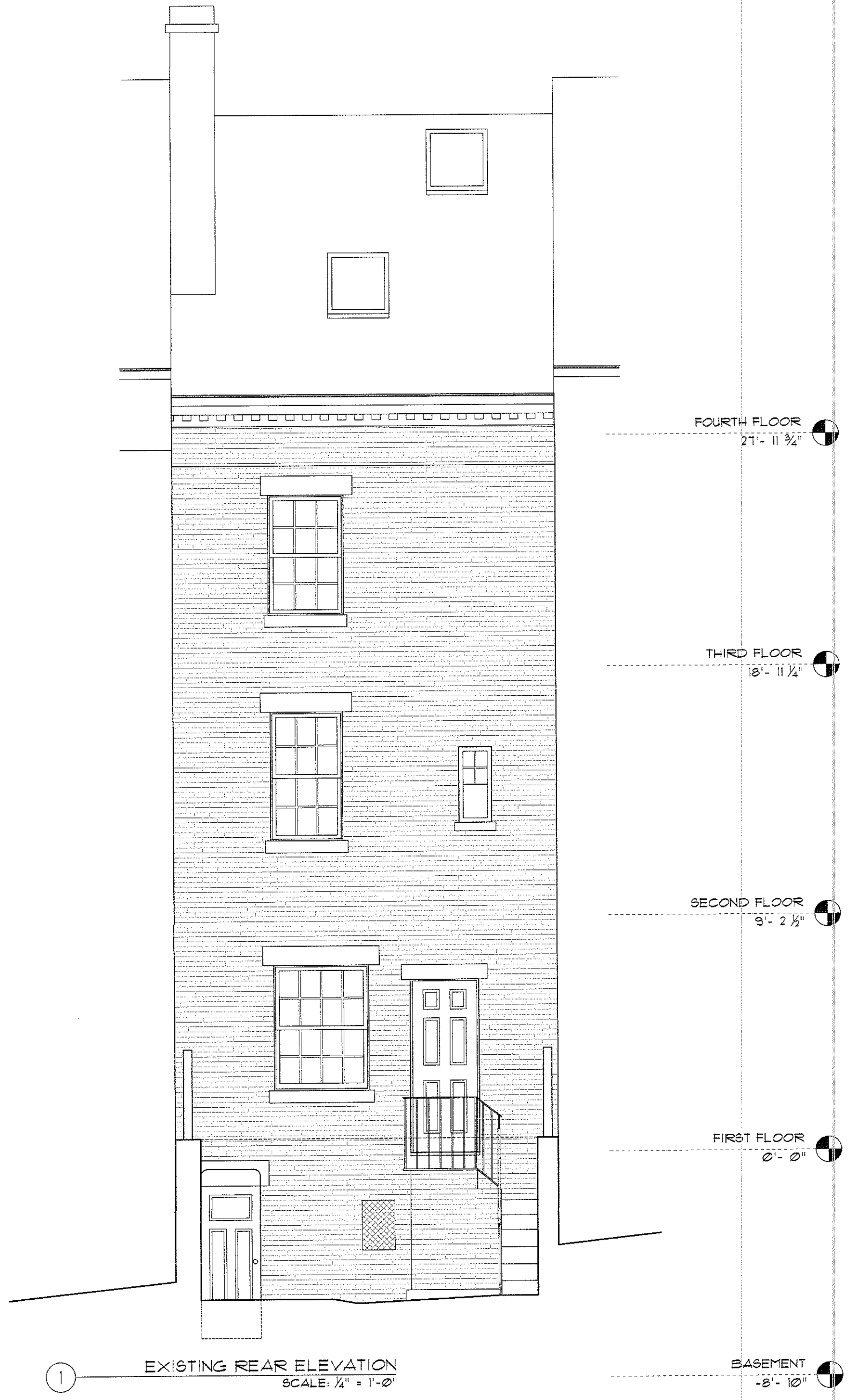
CHECKED: JGUR & MZP

SHEET NO.  
 A-1



**PAULI & URIBE**  
**ARCHITECTS LLC**  
 Classic Architecture  
 Interior Design  
 121 Mount Vernon Street  
 Boston, Massachusetts, 02108  
 617.227.0994 • www.pauli-uribe.com

**21 SOUTH RUSSELL STREET**  
**BOSTON, MA 02114**

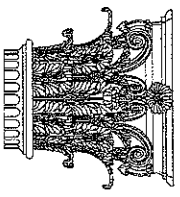


**EXISTING REAR ELEVATION**  
 SCALE: 1/4" = 1'-0"

SHEET TITLE:  
 EXISTING CONDITIONS  
 REAR ELEVATION  
 DATE: JUL 7 26, 2011  
 SCALE: AS NOTED  
 DRAWN: JGUR & RJP  
 CHECKED: JGUR & HZP

SHEET NO.

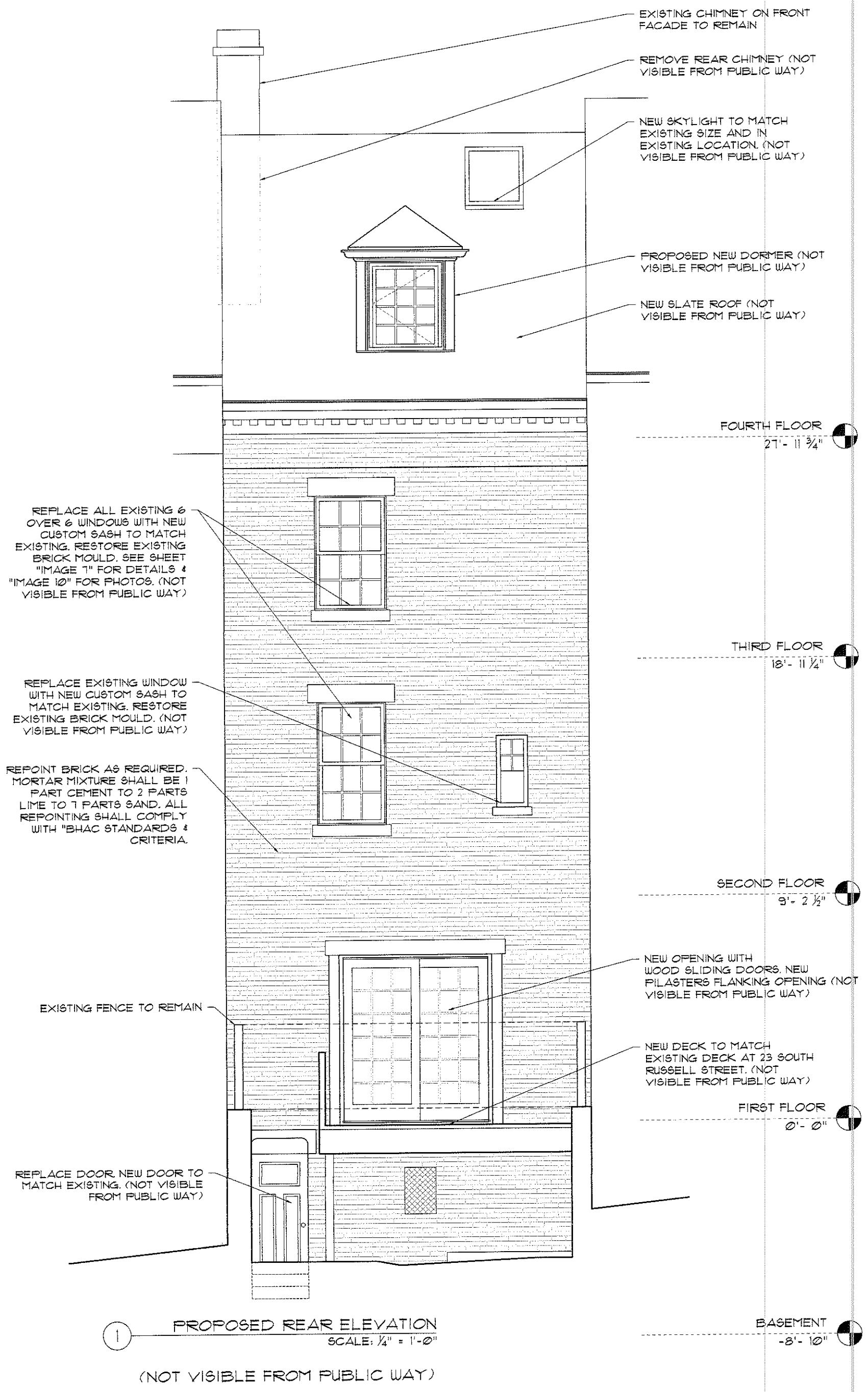
**EC-2**



**PAULI & URIBE**  
**ARCHITECTS LLC**  
 Classic Architecture  
 Interior Design  
 121 Mount Vernon Street  
 Boston, Massachusetts, 02108  
 617.227.0974 • www.pauli-uribe.com

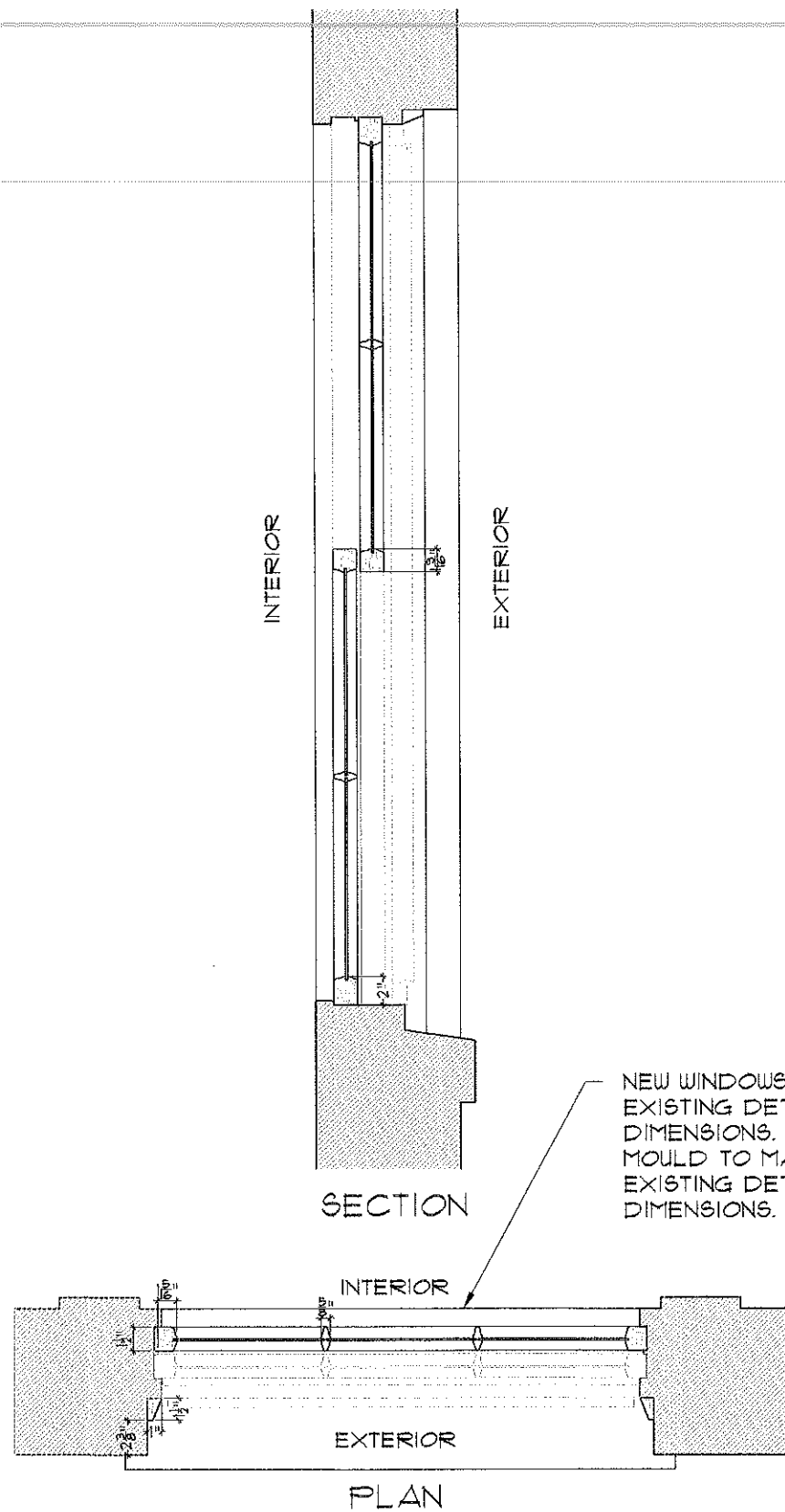
**21 SOUTH RUSSELL STREET**  
 BOSTON, MA 02114

SHEET TITLE: <b>PROPOSED REAR ELEVATION</b>	SHEET NO. <b>A-2</b>
DATE: JUL 7 26, 2011	
SCALE: AS NOTED	
DRAWN: JGAR & RJP	
CHECKED: JGAR & RJP	



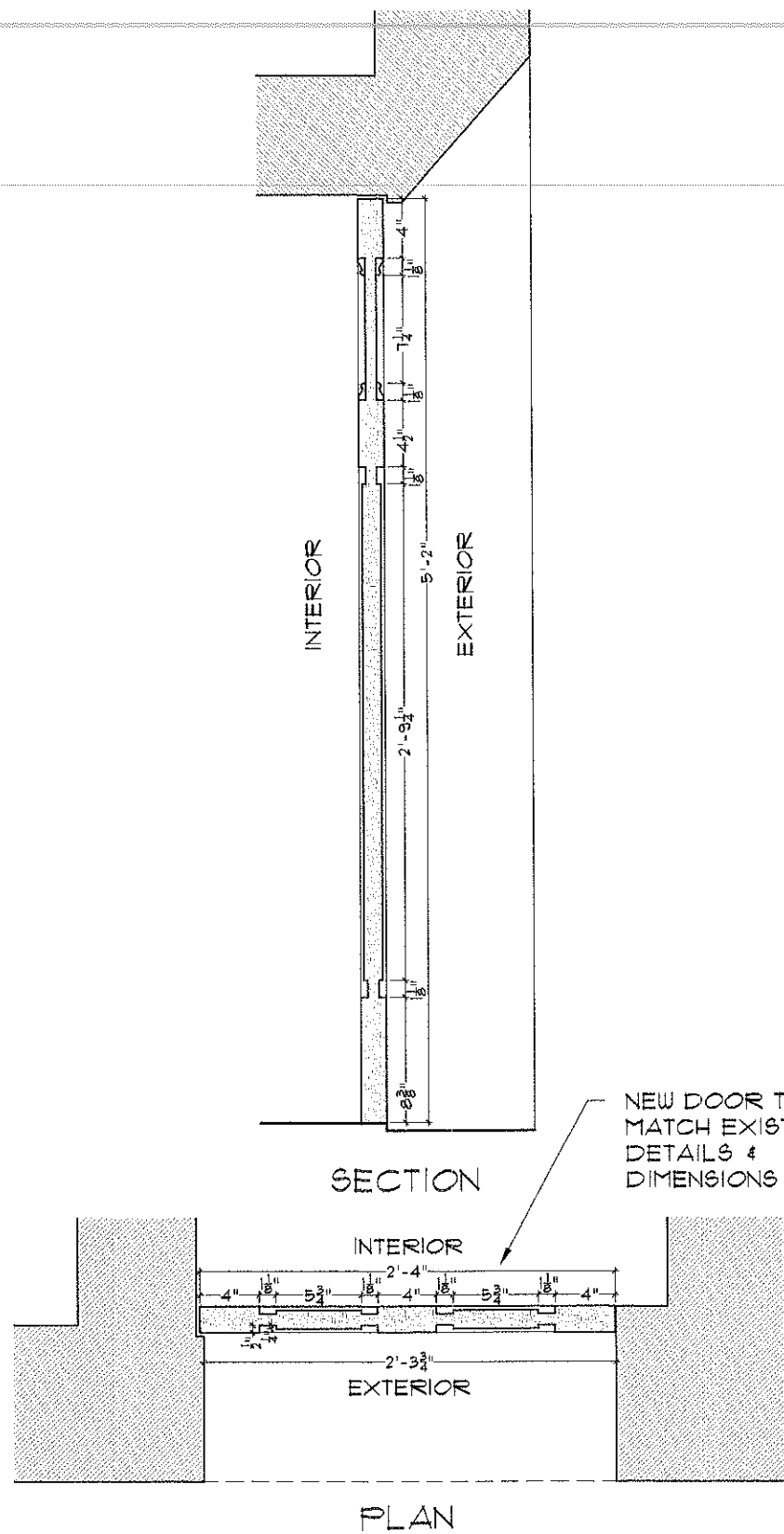
**PROPOSED REAR ELEVATION**  
 SCALE: 1/4" = 1'-0"  
 (NOT VISIBLE FROM PUBLIC WAY)

- FOURTH FLOOR  
21'- 11 3/4"
- THIRD FLOOR  
18'- 11 1/4"
- SECOND FLOOR  
9'- 2 1/2"
- FIRST FLOOR  
0'- 0"
- BASEMENT  
-3'- 10"



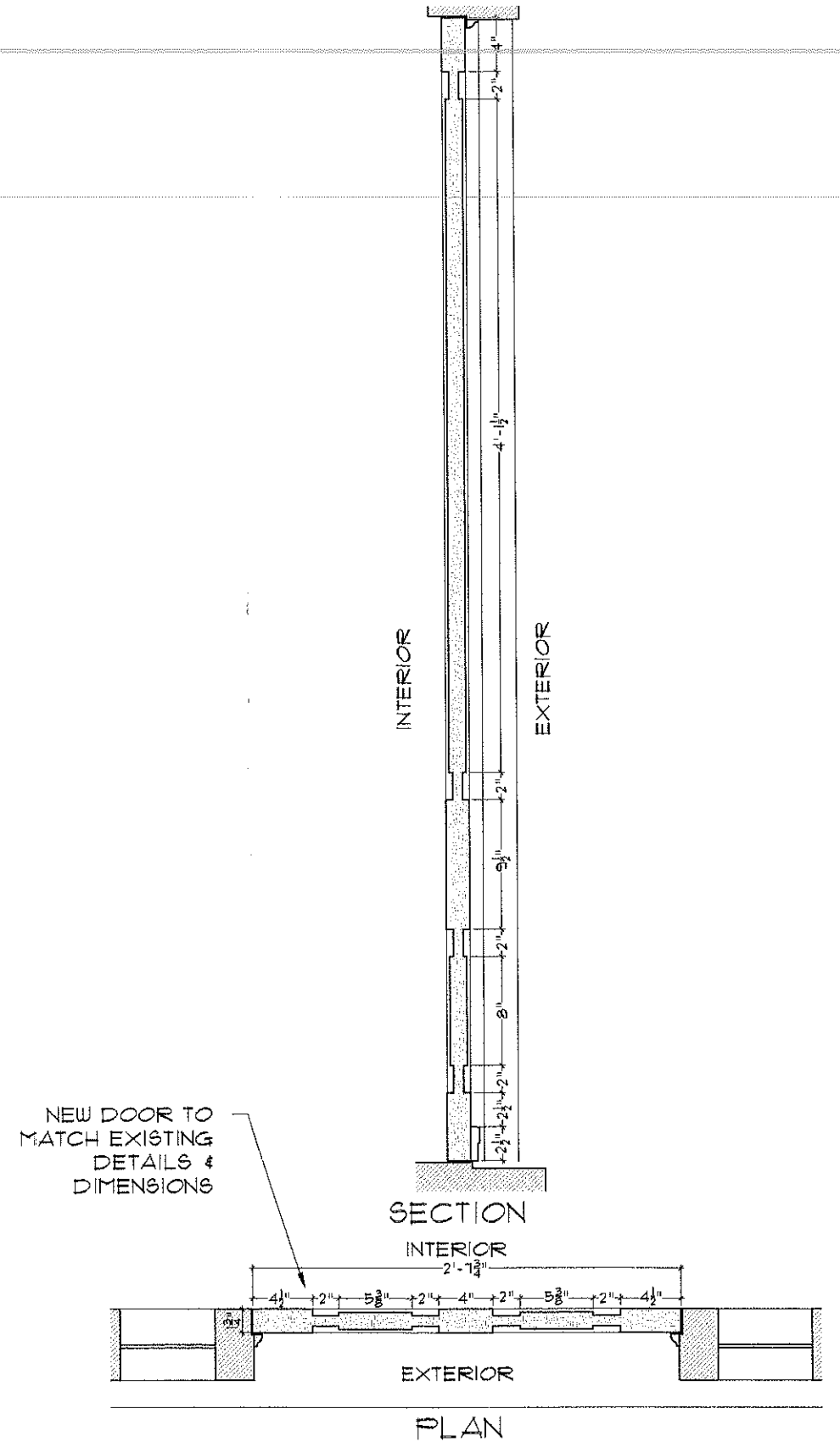
NEW WINDOWS TO MATCH EXISTING DETAILS & DIMENSIONS. NEW BRICK MOULD TO MATCH EXISTING DETAILS & DIMENSIONS.

1 TYPICAL EXISTING DH WINDOW DETAIL  
SCALE: 1" = 1'-0"



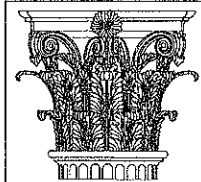
NEW DOOR TO MATCH EXISTING DETAILS & DIMENSIONS

2 EXISTING GARDEN LEVEL DOOR DETAIL  
SCALE: 1" = 1'-0"



NEW DOOR TO MATCH EXISTING DETAILS & DIMENSIONS

3 EXISTING FRONT ENTRY DOOR DETAIL  
SCALE: 1" = 1'-0"



PAULI & URIBE ARCHITECTS LLC  
Classic Architecture Interior Design  
121 Mount Vernon Street  
Boston, Massachusetts 02108  
617 227 0954 • www.pauli-unibe.com

21 SOUTH RUSSELL STREET  
BOSTON, MA 02114

SHEET TITLE: DOOR & WINDOW DETAILS  
DATE: JULY 26, 2011  
SCALE: AS NOTED  
DRAWN: JGUR & RJP  
CHECKED: JGUR & MZP

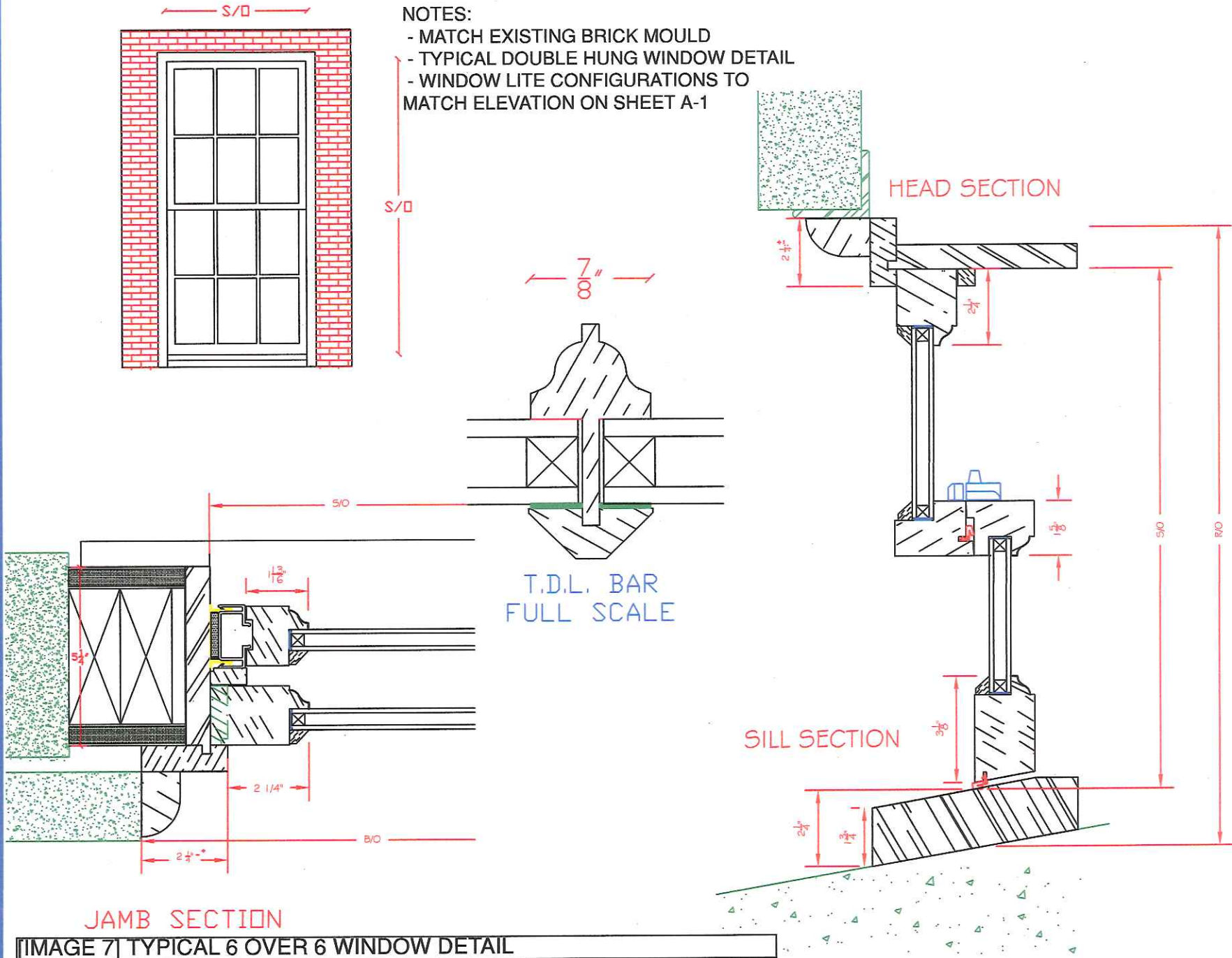
SHEET NO. A-3



# JB PROPER BOSTONIAN SH WINDOW UNIT

## NOTES:

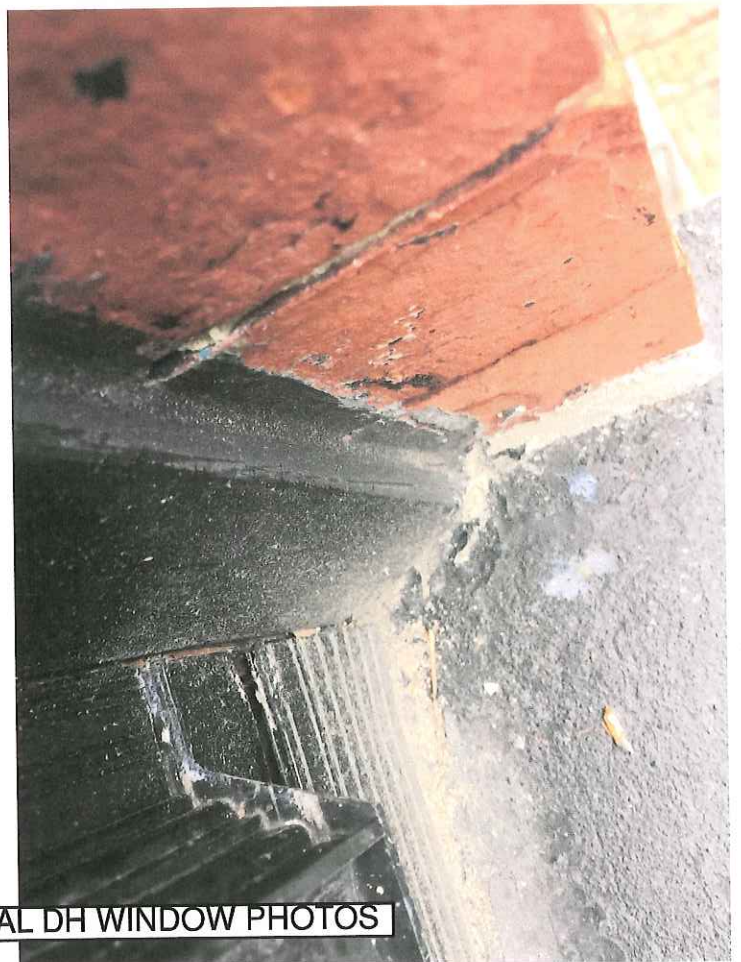
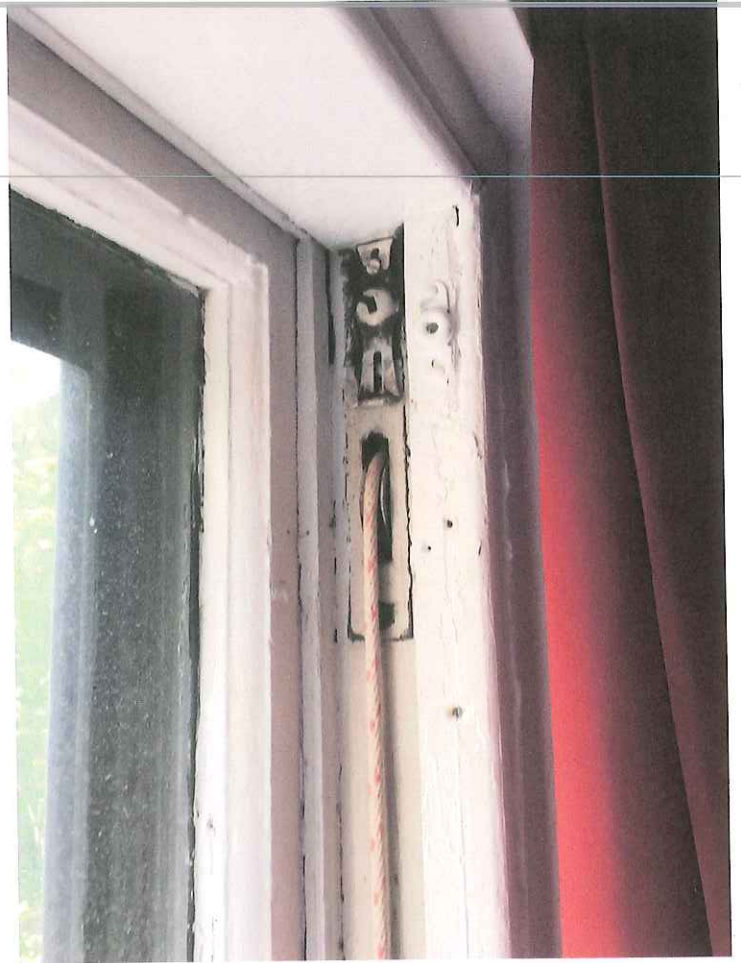
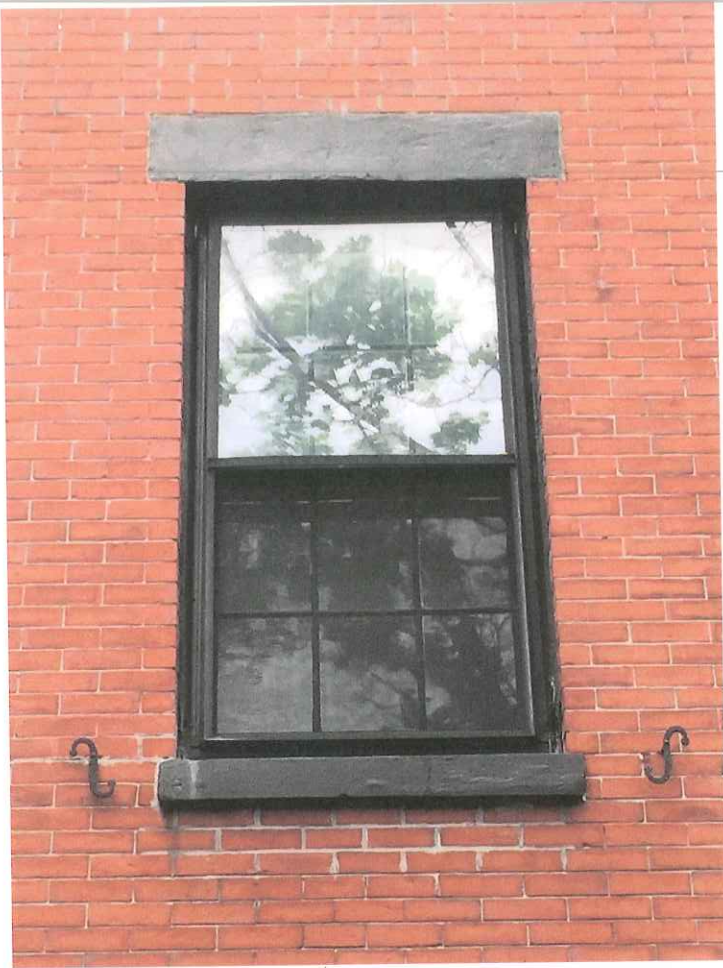
- MATCH EXISTING BRICK MOULD
- TYPICAL DOUBLE HUNG WINDOW DETAIL
- WINDOW LITE CONFIGURATIONS TO MATCH ELEVATION ON SHEET A-1



## JAMB SECTION

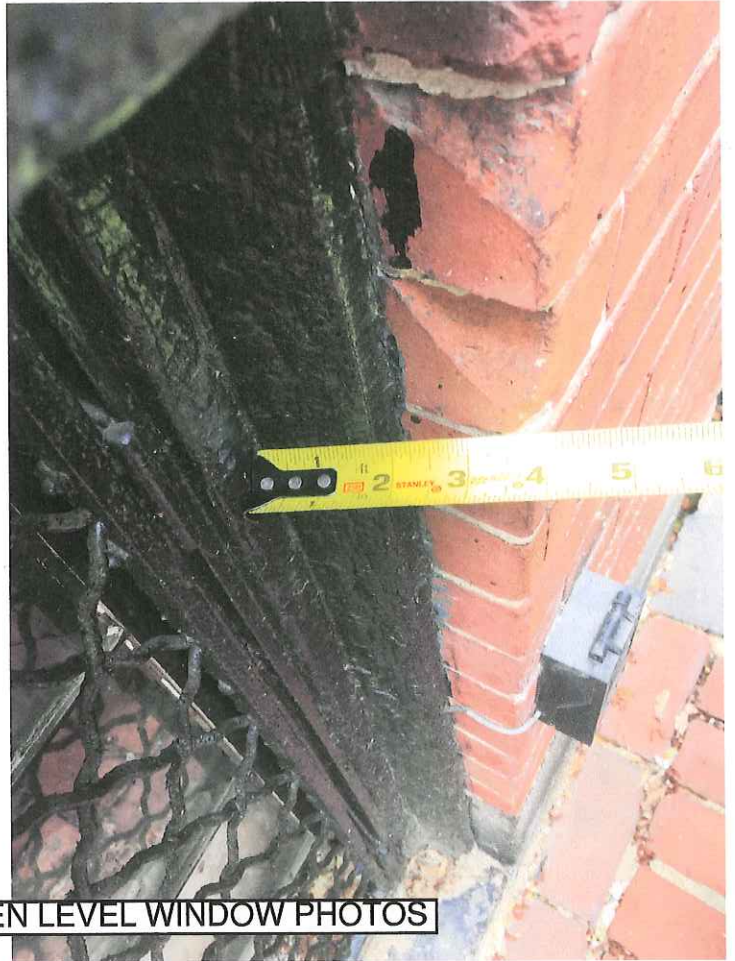
[IMAGE 7] TYPICAL 6 OVER 6 WINDOW DETAIL





[IMAGE 10] 21 SOUTH RUSSELL STREET TYPICAL DH WINDOW PHOTOS





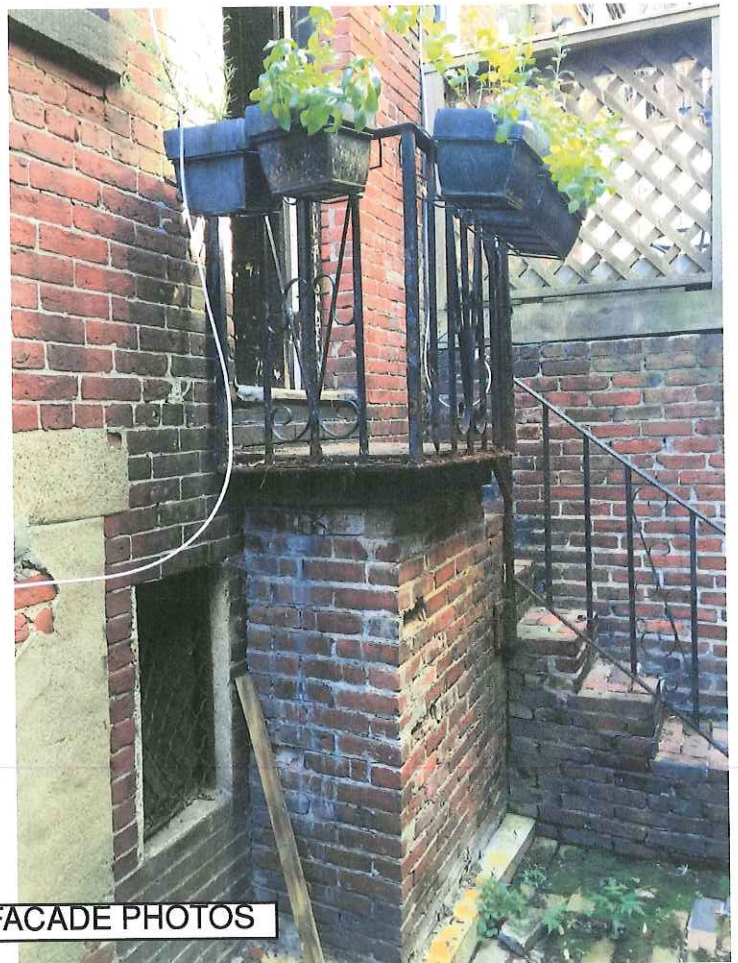
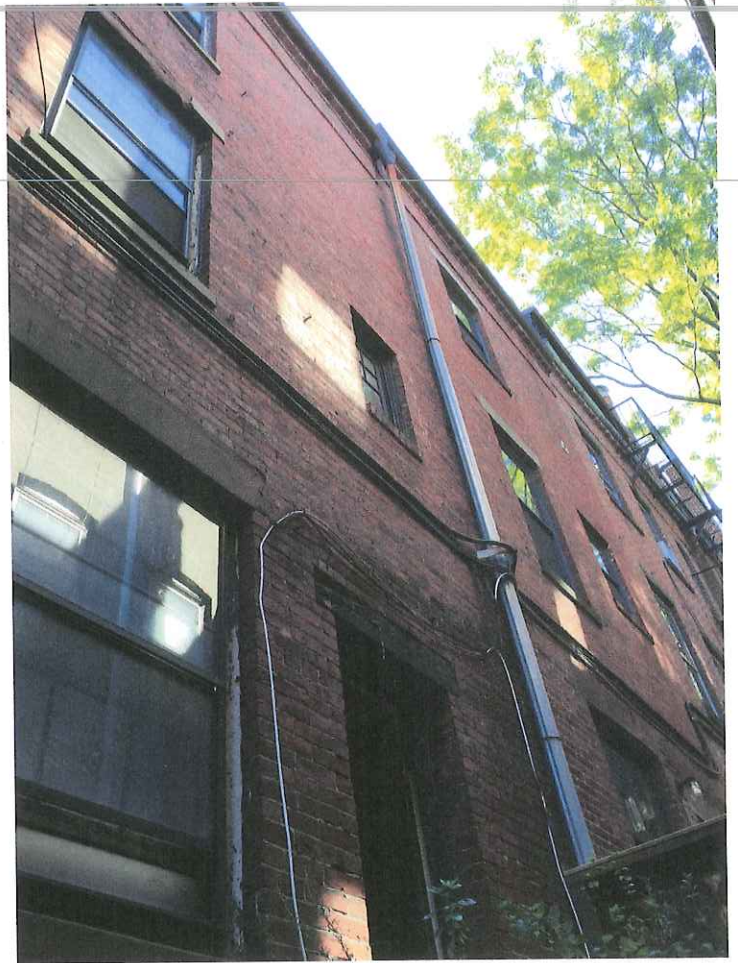
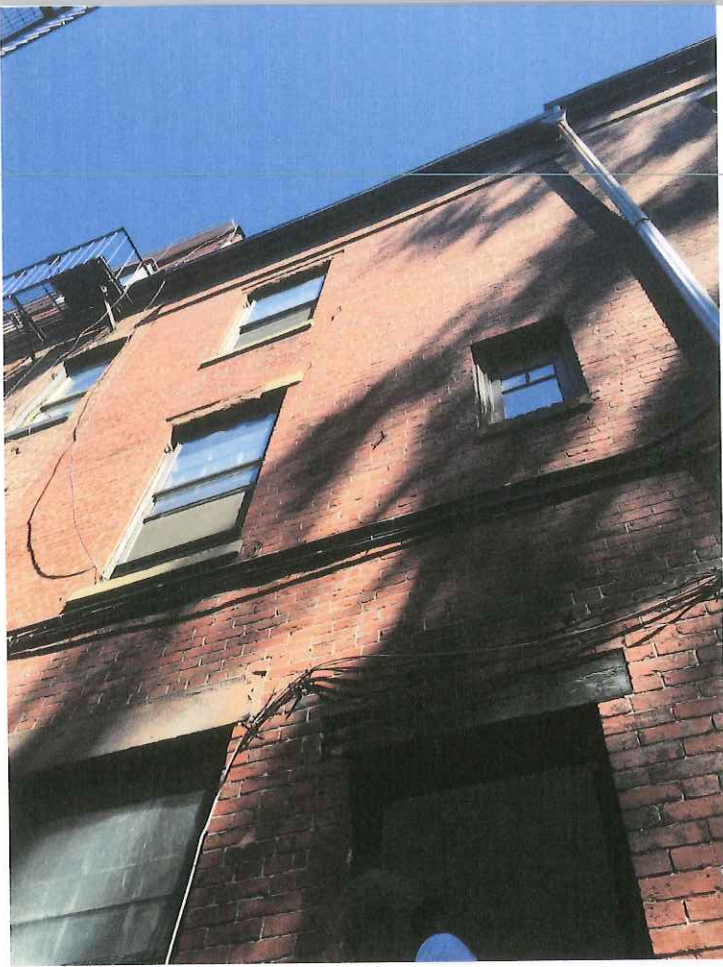
[IMAGE 11] 21 SOUTH RUSSELL STREET GARDEN LEVEL WINDOW PHOTOS





[[IMAGE 12] 21 SOUTH RUSSELL STREET FIRST FLOOR WINDOW PHOTOS





[IMAGE 2] 21 SOUTH RUSSELL STREET REAR FACADE PHOTOS



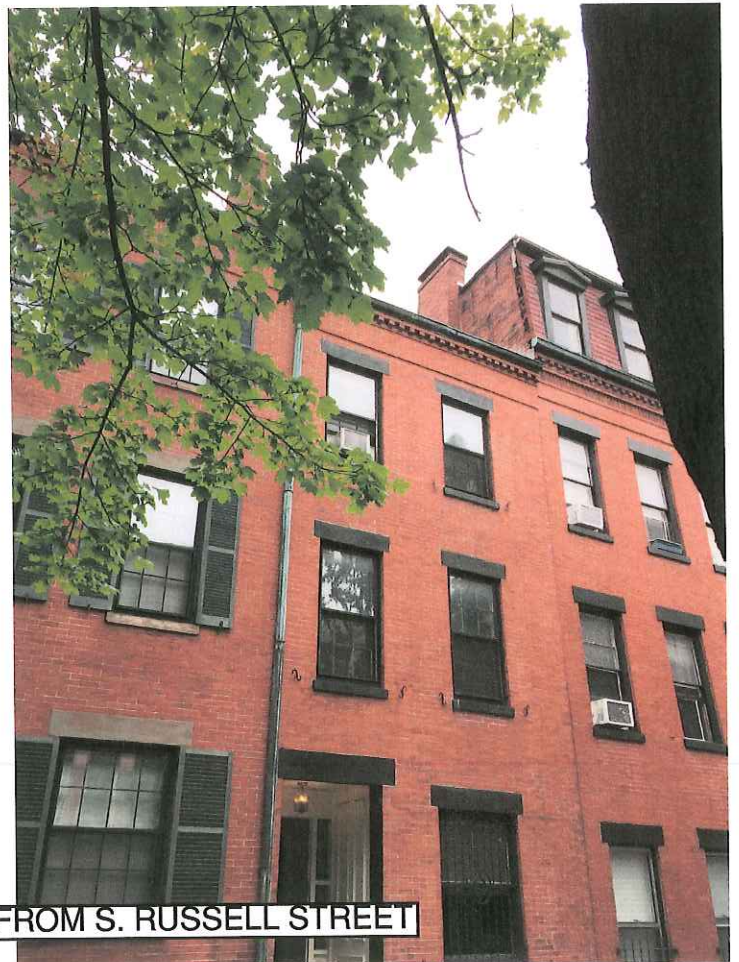
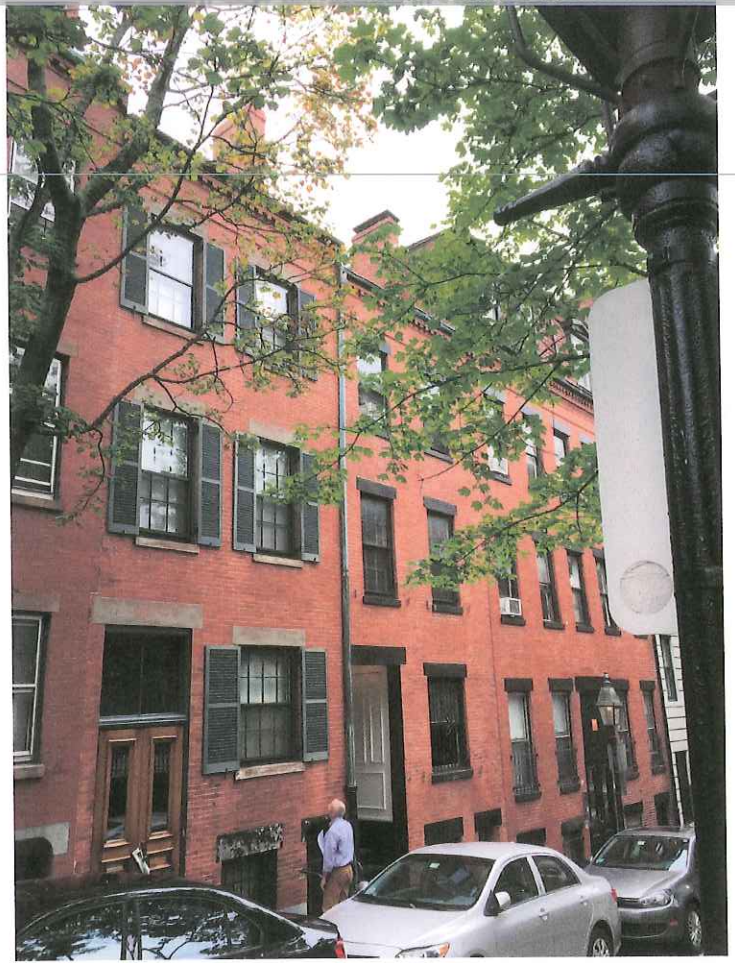
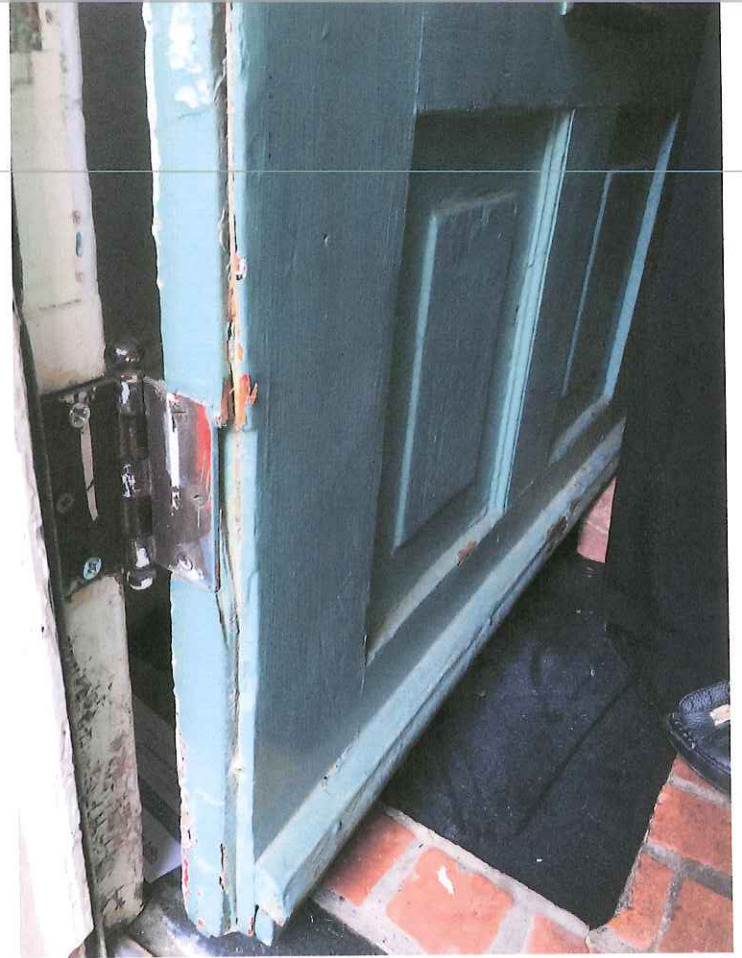


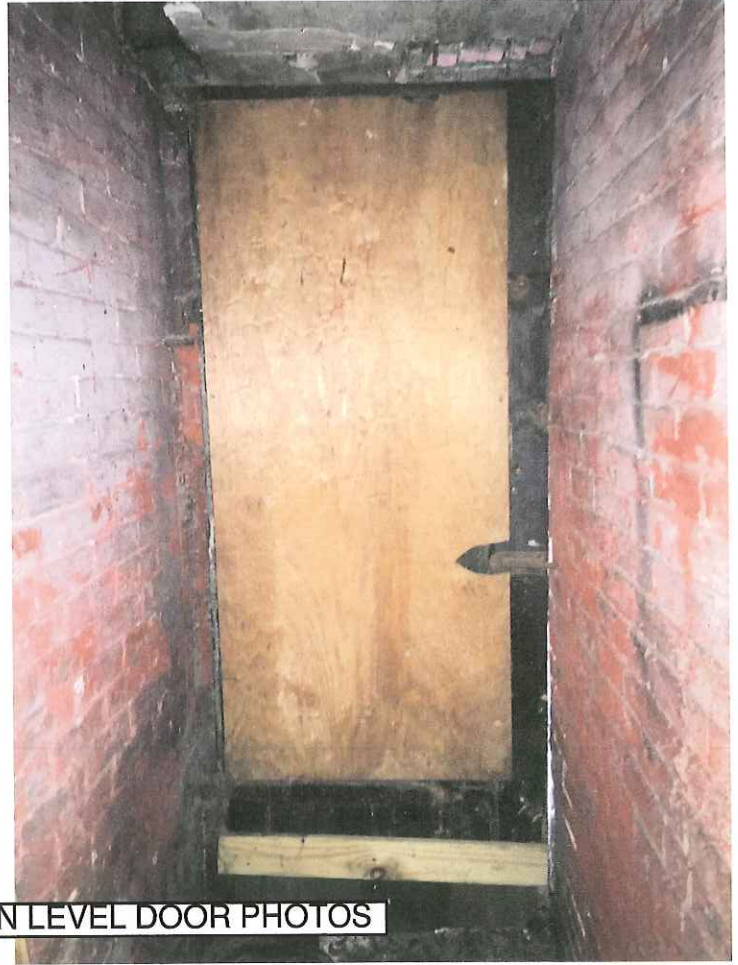
IMAGE 3 | 21 SOUTH RUSSELL STREET VIEWS FROM S. RUSSELL STREET |





[IMAGE 8] 21 SOUTH RUSSELL STREET FRONT ENTRY DOOR PHOTOS





[[IMAGE 9] 21 SOUTH RUSSELL STREET GARDEN LEVEL DOOR PHOTOS





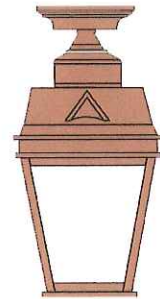
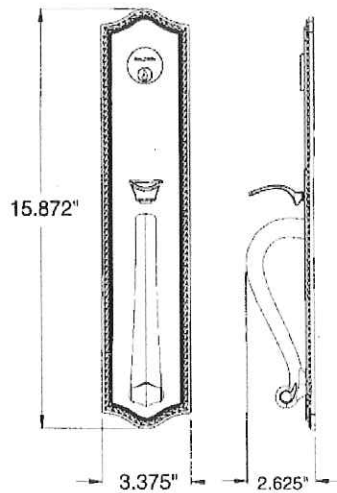
**BALDWIN Traditional Deadbolt**  
Model # 8031.031  
Finish: Unlacquered Brass



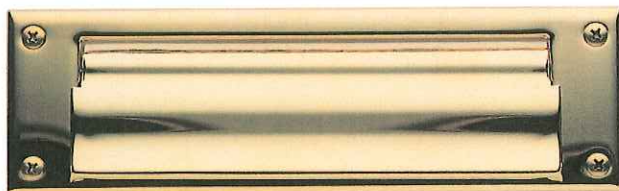
**EXISTING DOOR**



**BALDWIN Bristol Entrance Trim**  
Model # 6963.031  
Finish: Unlacquered Brass  
Size: 15.872" H x 3.375" W



**BRASS LIGHT GALLERY Gerogian Lantern**  
Model #EX-5409-A17  
Finish: Architectural Bronze  
Lantern Size: 12.5" H x 9" W  
Mounted Height: 17"



**BALDWIN Letter Box Plate**  
Model # 0015.031  
Finish: Unlacquered Brass  
Size: 9.9" W x 3" H

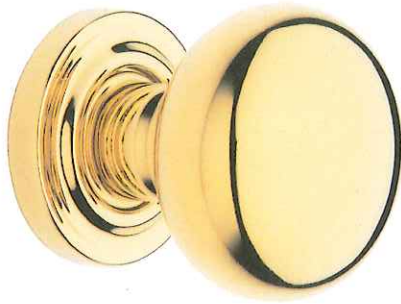


**SMEDBO Beslagsboden Doorbell**  
Model # B110M  
Finish: Unlacquered Brass  
Size: 2.25" H x 1.125" W





**BALDWIN Traditional Deadbolt**  
Model # 8031.031  
Finish: Unlacquered Brass



**BALDWIN Estate Knob**  
Model # 5000.031  
Finish: Unlacquered Brass

(reuse existing black pull if feasible)

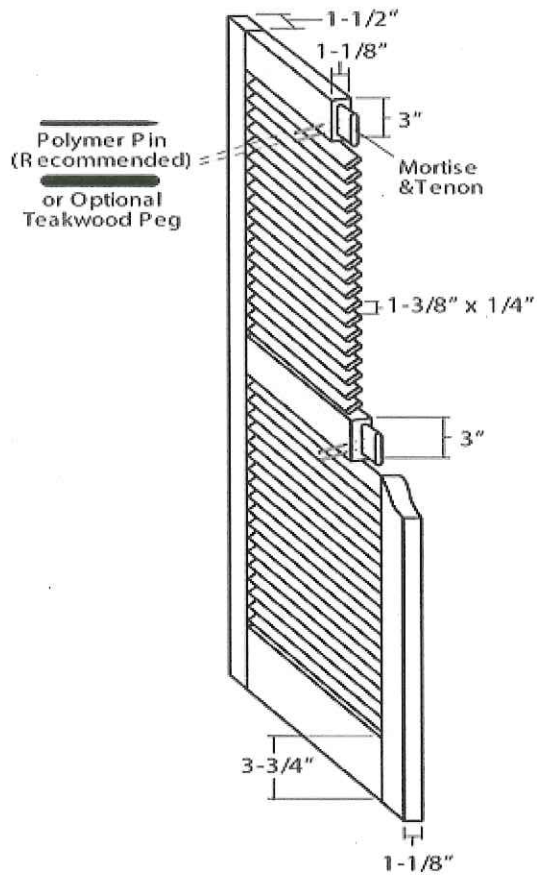


**EXISTING DOOR**





# Classic Louver



XCLM



**NOTE:**  
 - SHUTTER HEIGHT TO MATCH MASONRY OPENING.  
 - WIDTH TO MATCH HALF OF MASONRY OPENING

X Traditional Hinge & Pintel