

89 BEACON STREET

BOSTON, MASSACHUSETTS

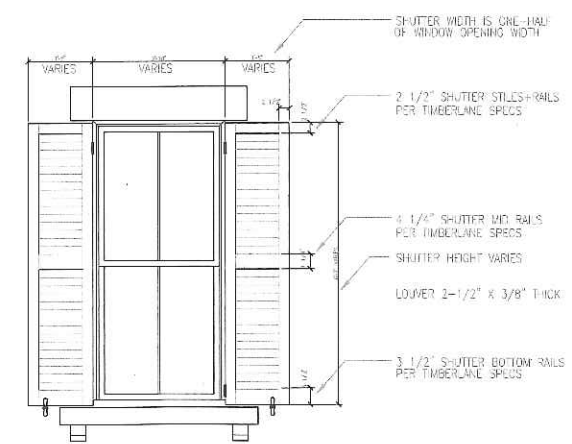
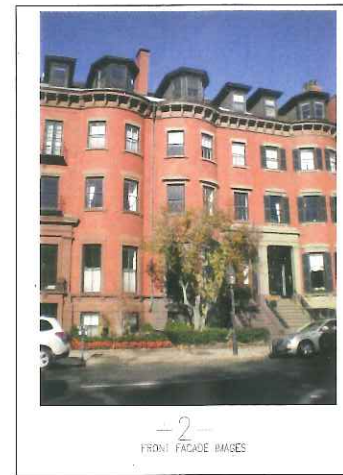
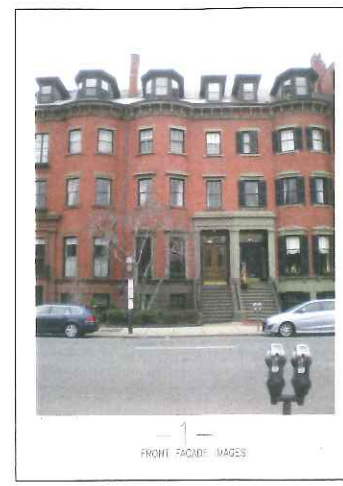
Revision No.	Date
REVISION 1	05.10.17

Date:	April 12, 2017
Project Number:	
Checked By:	RP/PC/SB
Scale:	





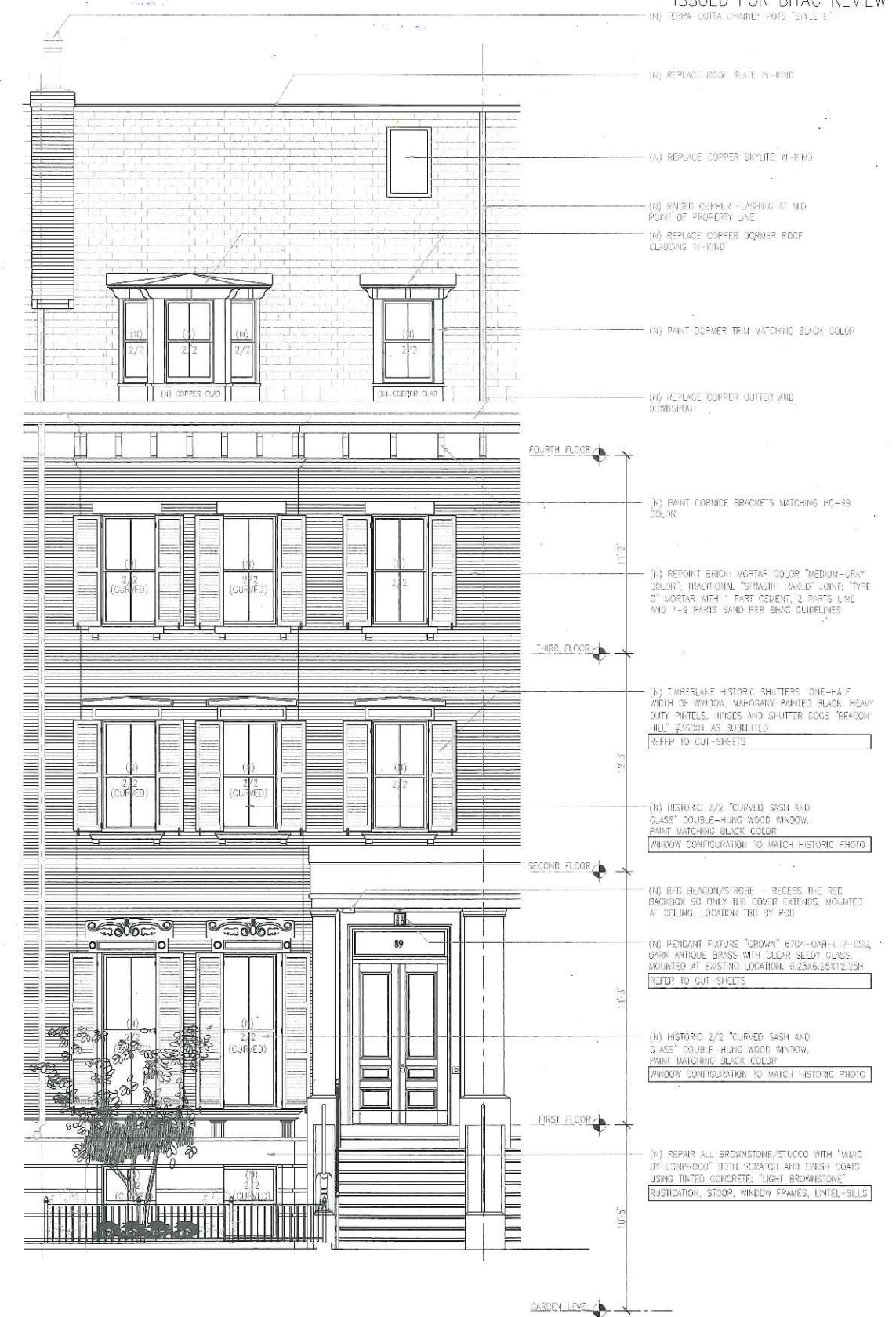
1 EXISTING BEACON STREET ELEVATION
SCALE: 1/4" = 1'-0"



SHUTTER SPECIFICATION:
TIMBERLAND MODEL SW 2-1/2" FIXED LOUVER SABLE MAHOGANY PAINTED BLACK WITH COPPER TOP CAP - REFER TO CUT SHEETS

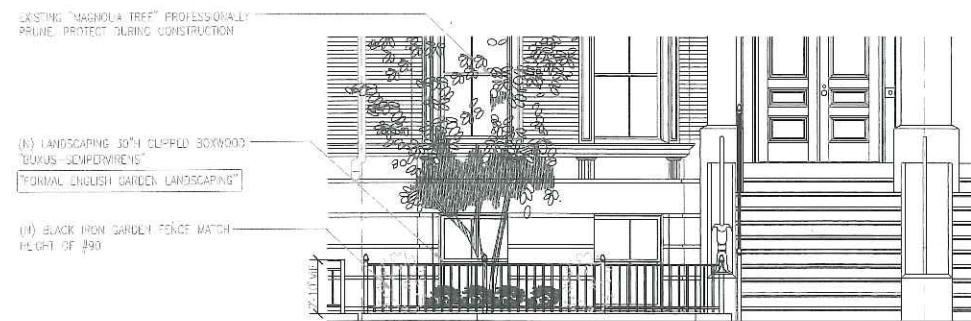
SHUTTER HARDWARE:
NARROW PLATE PINNETS AND PINNIT HINGES WITH "BEACON HILL" SHUTTER DOGS

2 SHUTTER ELEVATION DETAIL
SCALE: 1/4" = 1'-0"

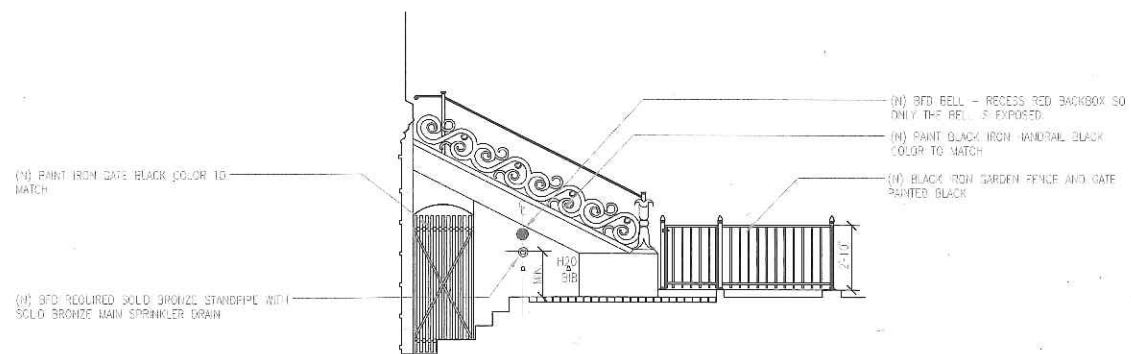


3 PROPOSED BEACON STREET ELEVATION
SCALE: 1/4" = 1'-0"

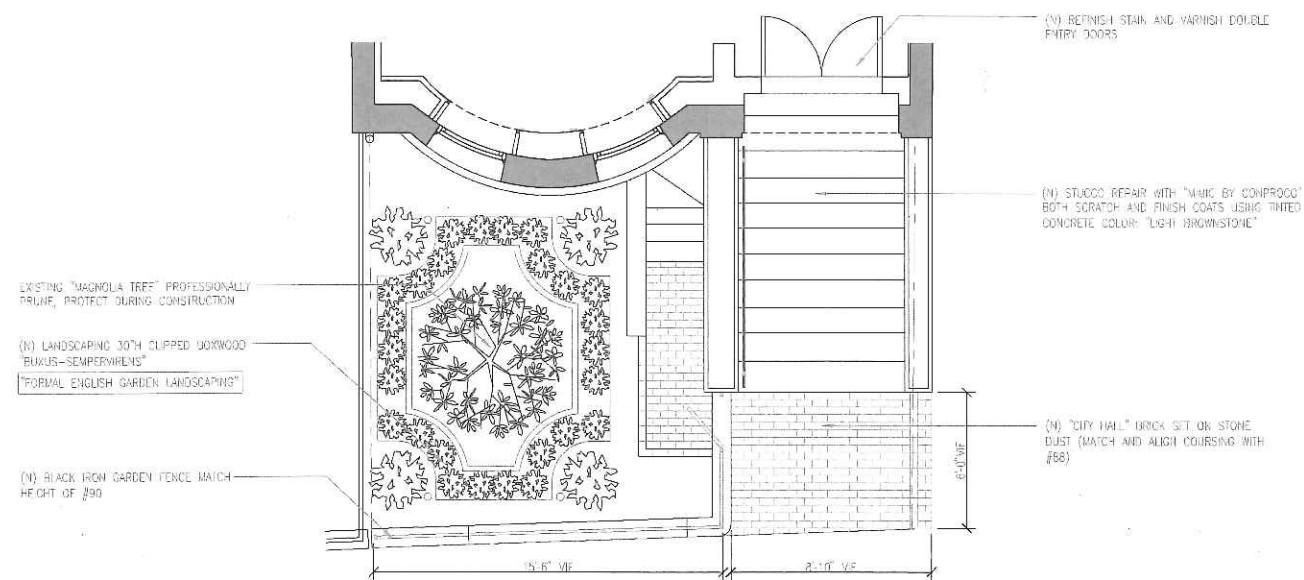
Revision No.	Date
REVISION 1	05.10.17



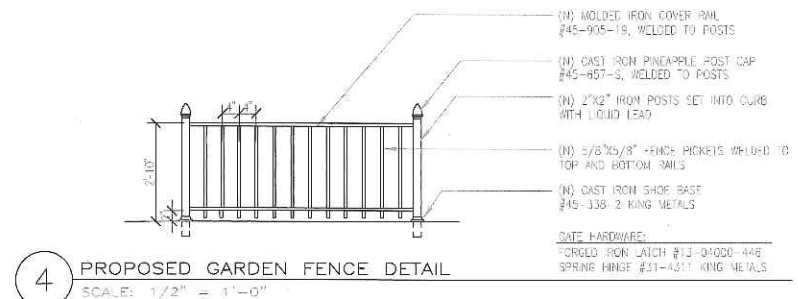
1 PROPOSED FRONT GARDEN FENCE
SCALE: 1/4" = 1'-0"



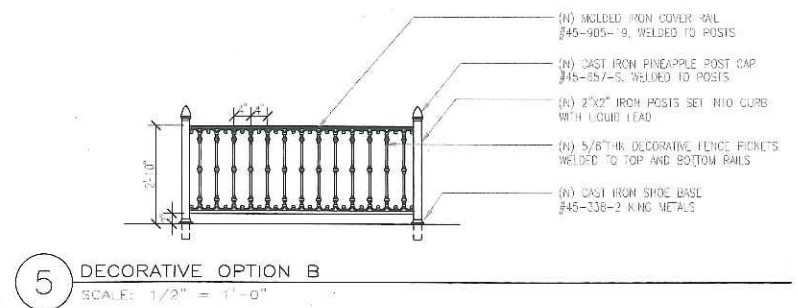
2 PROPOSED FRONT GARDEN FENCE
SCALE: 1/4" = 1'-0"



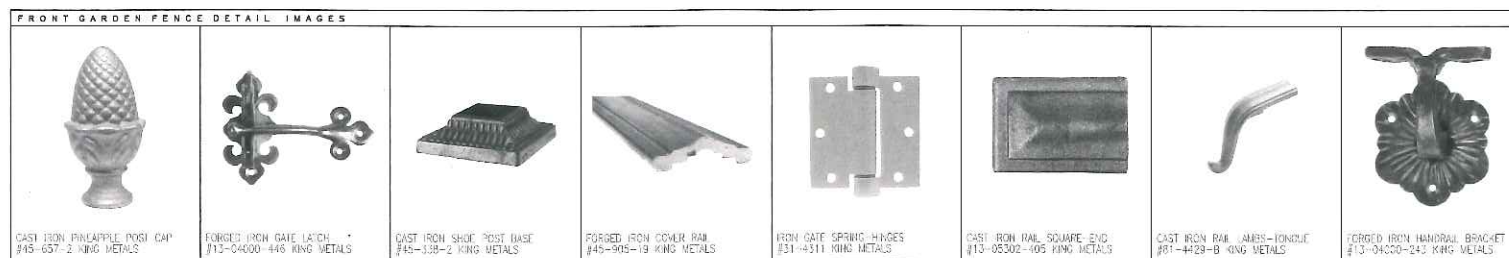
3 PROPOSED FRONT LANDSCAPING PLAN
SCALE: 1/4" = 1'-0"



4 PROPOSED GARDEN FENCE DETAIL
SCALE: 1/2" = 1'-0"



5 DECORATIVE OPTION B
SCALE: 1/2" = 1'-0"



-5-
FRONT GARDEN IMAGES



-6-
FRONT GARDEN IMAGES

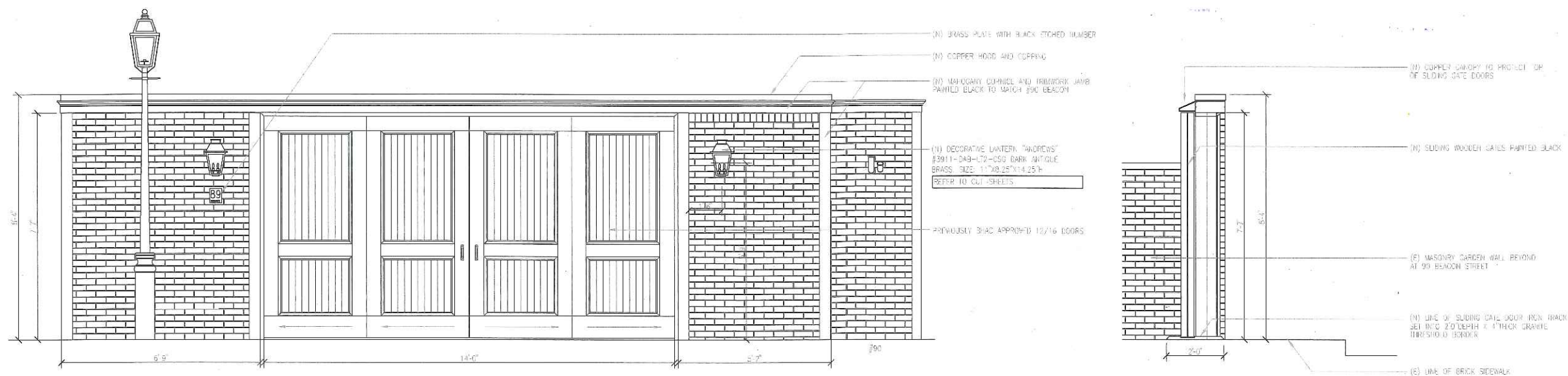


-7-
FRONT GARDEN IMAGES

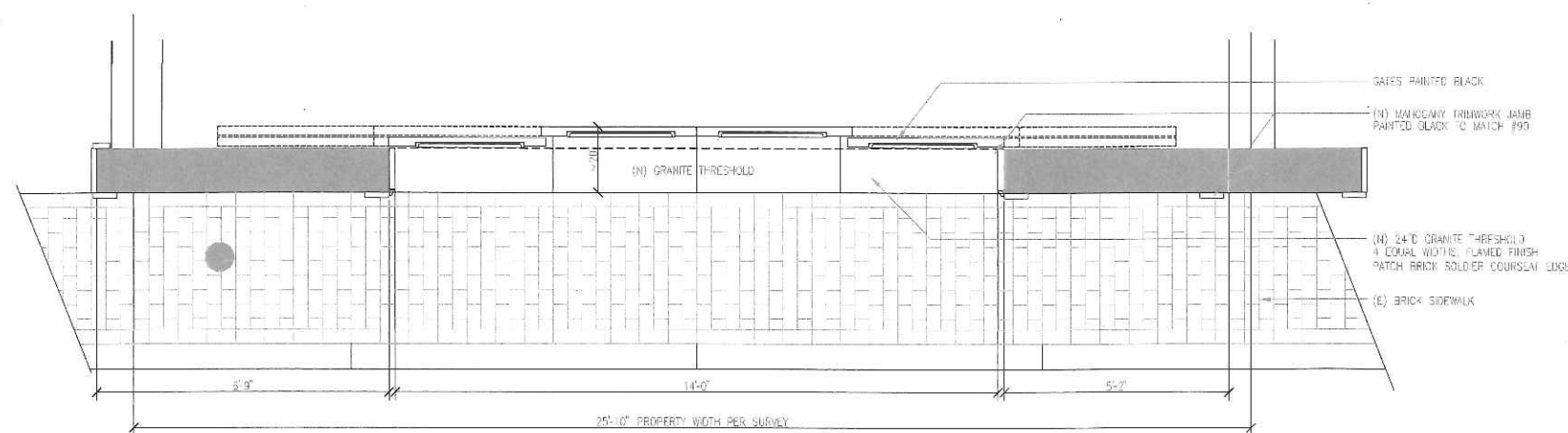
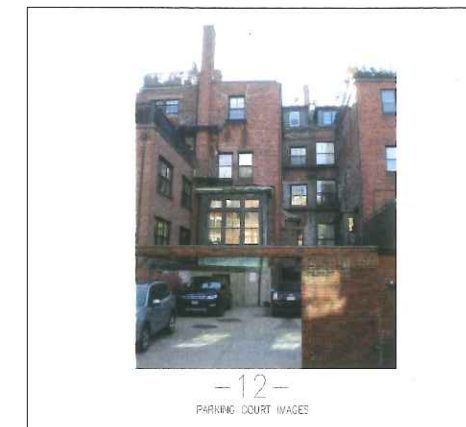
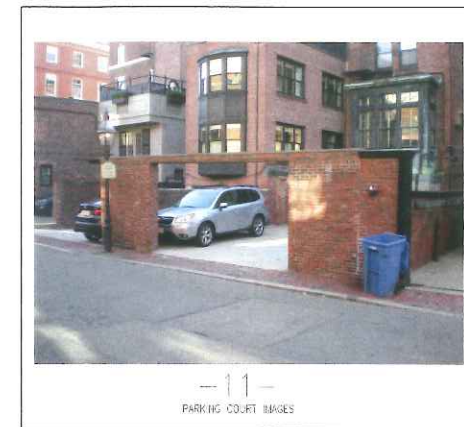
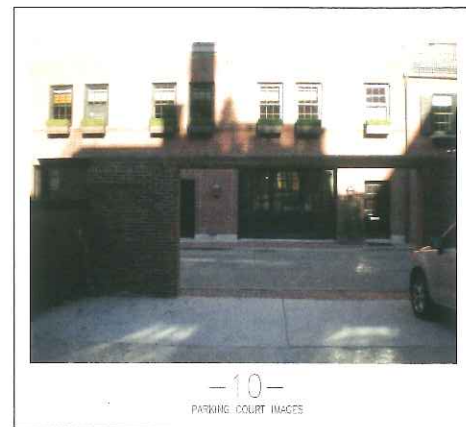
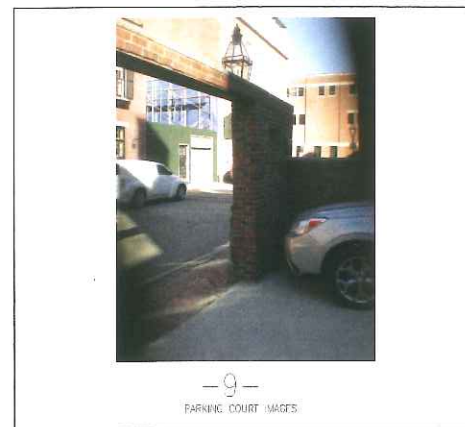


-8-
FRONT GARDEN IMAGES

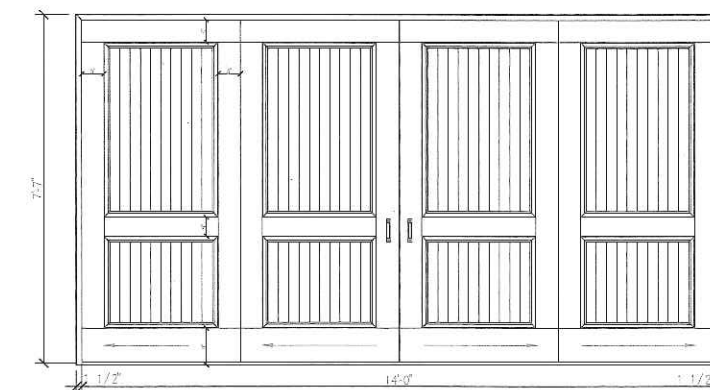
Revision No.	Date
REVISION 1	05.10.17



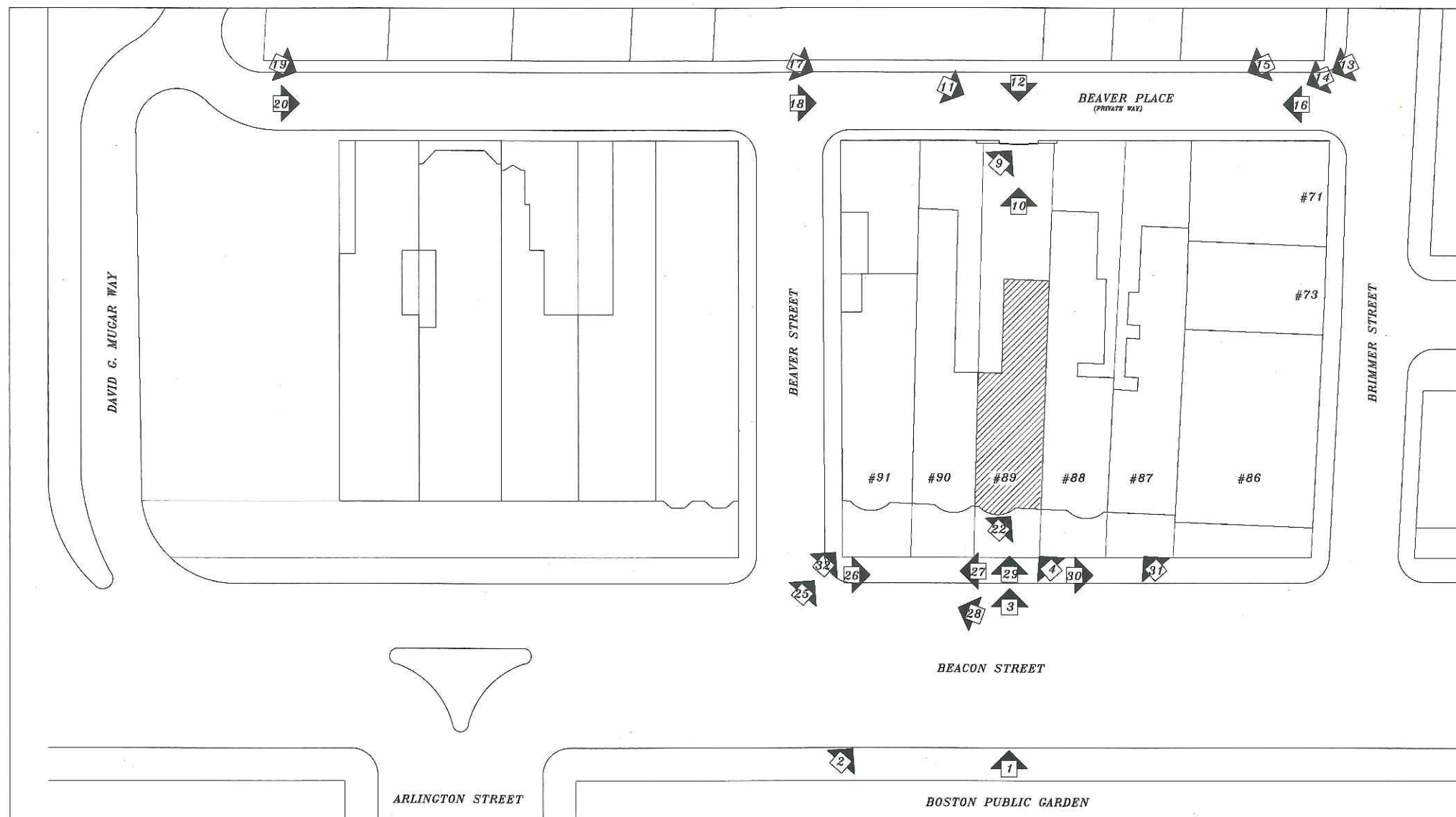
1 BEAVER PLACE (PRIVATE WAY) ELEVATION
SCALE: 1/2" = 1'-0"



2 BEAVER PLACE (PRIVATE WAY) PLAN
SCALE: 1/2" = 1'-0"



3 SLIDING GATE DOOR DETAILS
SCALE: 1/2" = 1'-0"



1 SITE PLAN SHOWING PICTURE LOCATION
SCALE: N.T.S.





FRONT FACADE IMAGES



FRONT FACADE IMAGES

PHOTOGRAPHS

89 Beacon Street
Boston - Massachusetts

PAYNE | COLLINS
16 Worcester Square, Boston, MA 02118
Tel: 617.308.4887
Tel: 617.694.2757

Revision No. Date
REVISION 1 05.10.17

Date: April 12, 2017
Project Number:
Checked By: RP/PC/SB
Scale:

Novack Properties, LLC
81 Beacon Street, #7
Boston, MA 02108
TEL: 978-325-0095

BHAC
05



-5-
FRONT GARDEN IMAGES



-6-
FRONT GARDEN IMAGES

PHOTOGRAPHS

89 Beacon Street
Boston - Massachusetts

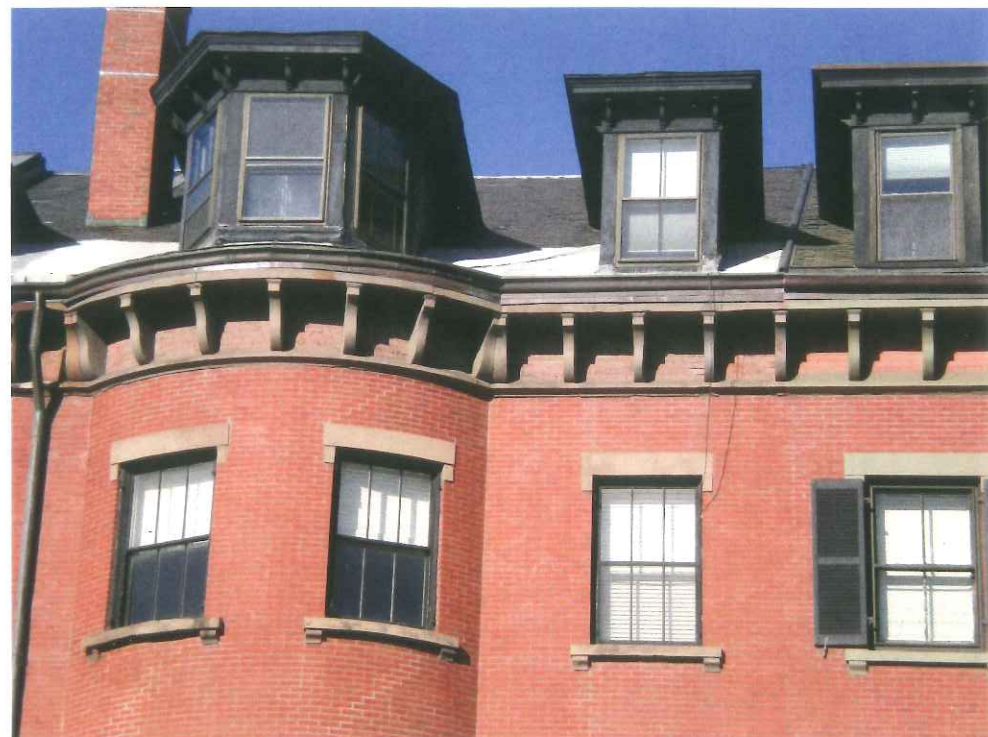
PAYNE | COLLINS
18 Worcester Square, Boston, MA 02118
Tel: 617.308.4887
Tel: 617.694.2757

Revision No. _____ Date _____
REVISION 1 _____ 05.10.17

Date: _____ April 12, 2017
Project Number: _____
Checked By: _____ RP/PC/SB
Scale: _____

Novack Properties, LLC
81 Beacon Street, #7
Boston, MA 02108
TEL: 978-325-0095

BHAC
06



-3-
FRONT FACADE IMAGES



-4-
FRONT FACADE IMAGES



-7-
FRONT GARDEN IMAGES



-8-
FRONT GARDEN IMAGES



-9-
PARKING COURT IMAGES



-10-
PARKING COURT IMAGES



-11-
PARKING COURT IMAGES



-12-
PARKING COURT IMAGES

PHOTOGRAPHS

89 Beacon Street
Boston - Massachusetts

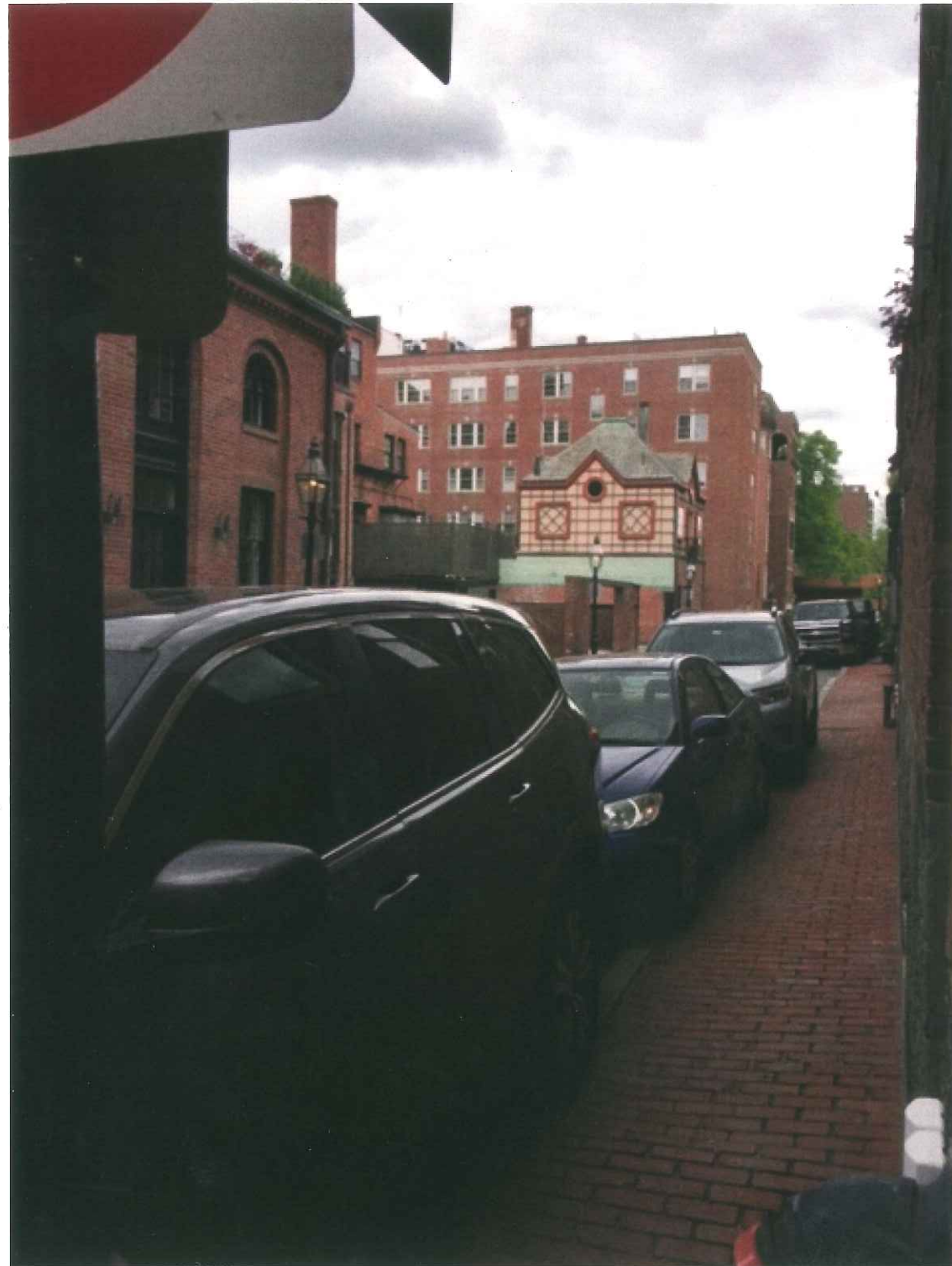
PAYNE | COLLINS
18 Worcester Square, Boston, MA 02118
Tel: 617.308.4887
Tel: 617.694.2757

Revision No.	Date
REVISION 1	05.10.17

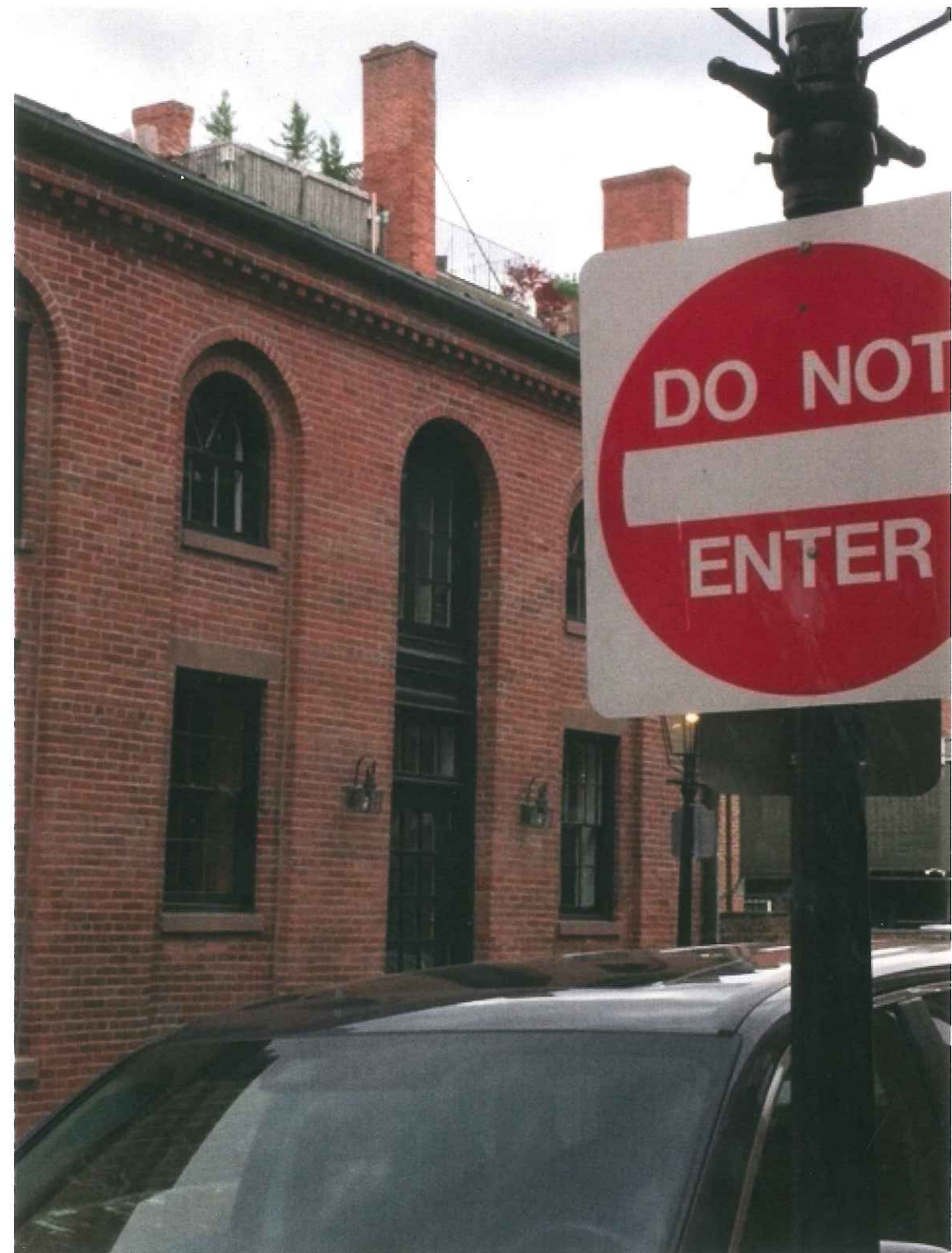
Date:	April 12, 2017
Project Number:	
Checked By:	RP/PC/SB
Scale:	

Novack Properties, LLC
81 Beacon Street, #7
Boston, MA 02108
TEL: 978-325-0095

BHAC
08



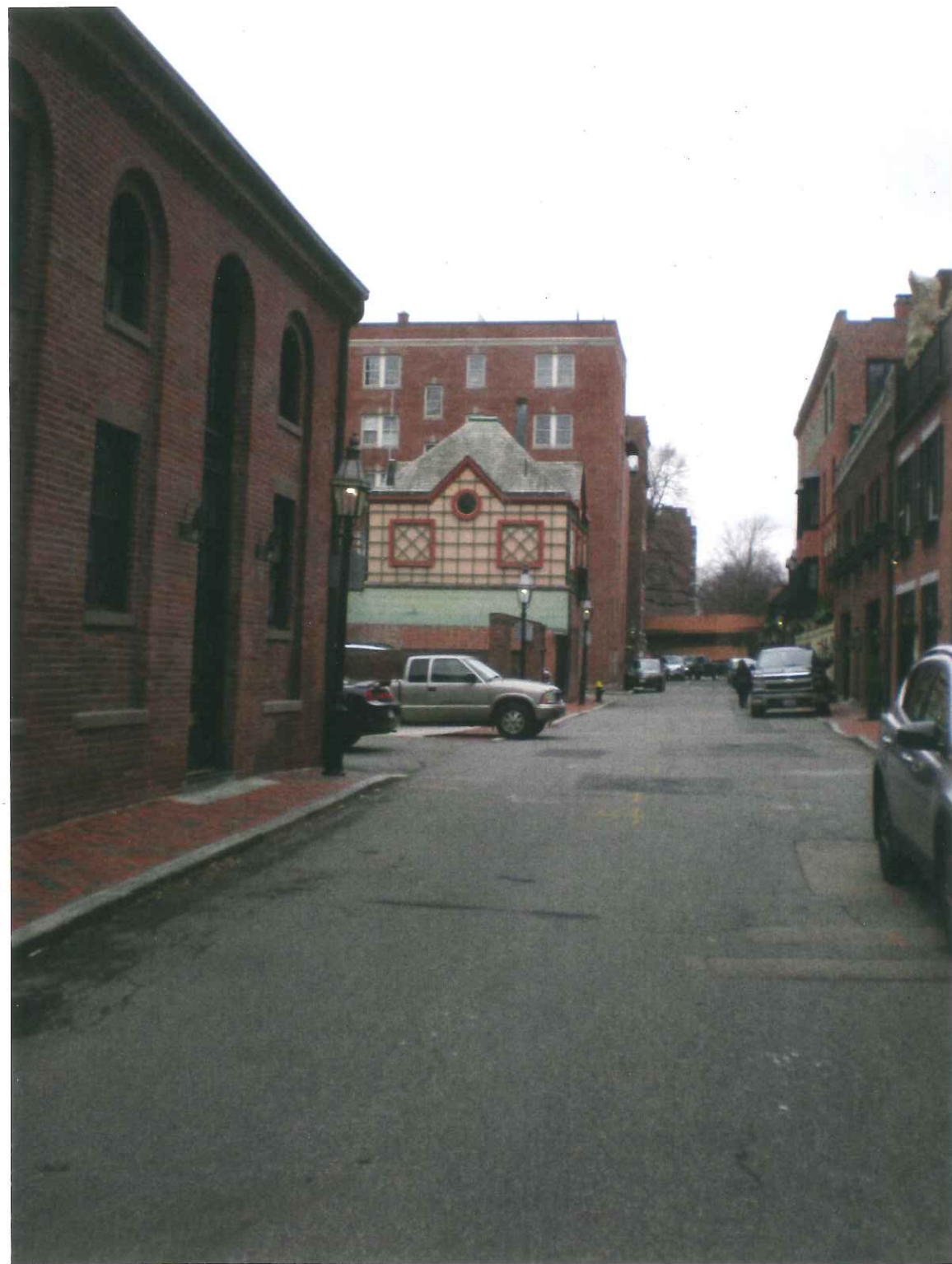
-13-
SIGHTLINE STUDY PHOTOGRAPH
FROM BRIMMER STREET



-14-
SIGHTLINE STUDY PHOTOGRAPH
FROM BRIMMER STREET

PHOTOGRAPHS

89 Beacon Street
Boston - Massachusetts



-15-
SIGHTLINE STUDY PHOTOGRAPH
FROM BRIMMER STREET



-16-
SIGHTLINE STUDY PHOTOGRAPH
FROM BRIMMER STREET

Revision No.	Date
REVISION 1	05.10.17

PHOTOGRAPHS
89 Beacon Street
Boston - Massachusetts

Date: April 12, 2017
Project Number:
Checked By: RP/PC/SB
Scale:





-17-
SIGHTLINE STUDY PHOTOGRAPH
FROM BEWER STREET



-18-
SIGHTLINE STUDY PHOTOGRAPH
FROM BEWER STREET

Revision No.	Date
REVISION 1	05.10.17

Date:	April 12, 2017
Project Number:	
Checked By:	RP/PC/SB
Scale:	



-19-
SIGHTLINE STUDY PHOTOGRAPH
FROM DAVID G. MUGAR WAY



-20-
SIGHTLINE STUDY PHOTOGRAPH
FROM DAVID G. MUGAR WAY



-21-
VIEW OF EXISTING DETAILS



-22-
VIEW OF EXISTING DETAILS



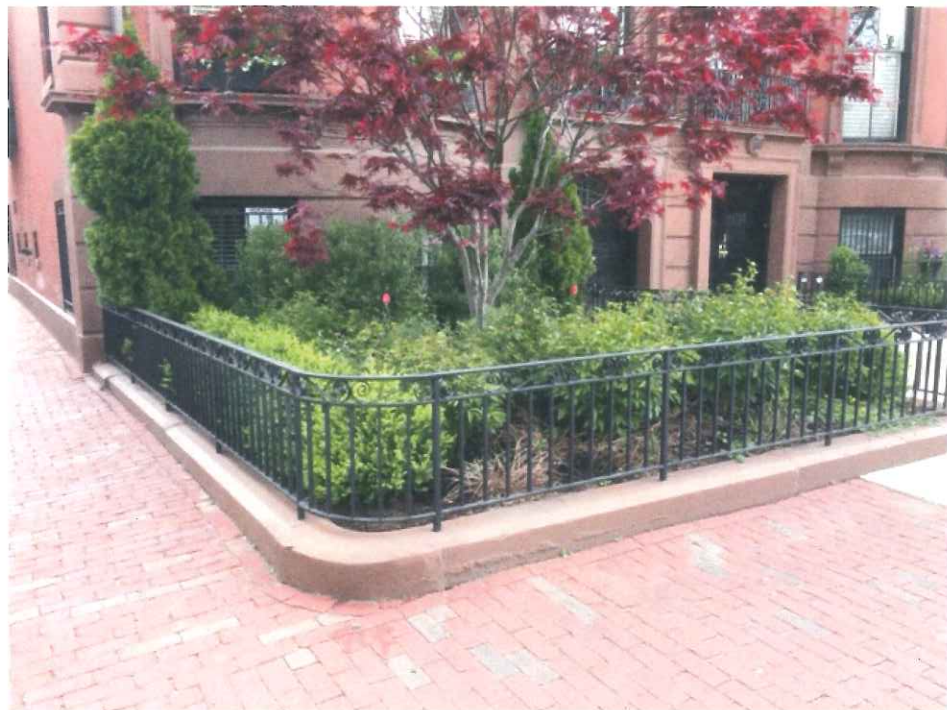
-23-
VIEW OF EXISTING DETAILS



-24-
VIEW OF EXISTING DETAILS

PHOTOGRAPHS

89 Beacon Street
Boston - Massachusetts



-25-
VIEW OF STREETScape SHOWING AREAWAY RAILINGS



-26-
VIEW OF STREETScape SHOWING AREAWAY RAILINGS



-27-
VIEW OF STREETScape SHOWING AREAWAY RAILINGS



-28-
VIEW OF STREETScape SHOWING AREAWAY RAILINGS



-29-
VIEW OF STREETSCAPE SHOWING AREAWAY RAILINGS



-30-
VIEW OF STREETSCAPE SHOWING AREAWAY RAILINGS



-31-
VIEW OF STREETSCAPE SHOWING AREAWAY RAILINGS



-32-
VIEW OF STREETSCAPE SHOWING AREAWAY RAILINGS

Revision No.	Date
REVISION 1	05.10.17



89 DEAGN STREET 1

4.24.17



09 DEACON STREET 2

4.24.17



4.24.17

89 BEACON STREET

3



4.24.17

89 BEACON STREET

4



4.24.17

89 DEACON STREET

5



PRIVATE
PARKING

4.24.17

BEAVER PLACE

6



7
809 HEALON STREET

4.24.17



89 WEAVER STREET 8

4.24.17



89 BEACON STREET

4.24.17 9



89 DEACON STREET

4.24.17 10



HEAVEN PLACE

4.24.17

9 15 11

HEAVEN PLACE



4.24.17

BEAVER PLACE



4.14.17



HEAVEN PLACE

4.24.17



4.24.17



Thomas J. Parker

89 Beacon St Boston



(1)



(2)



(3)



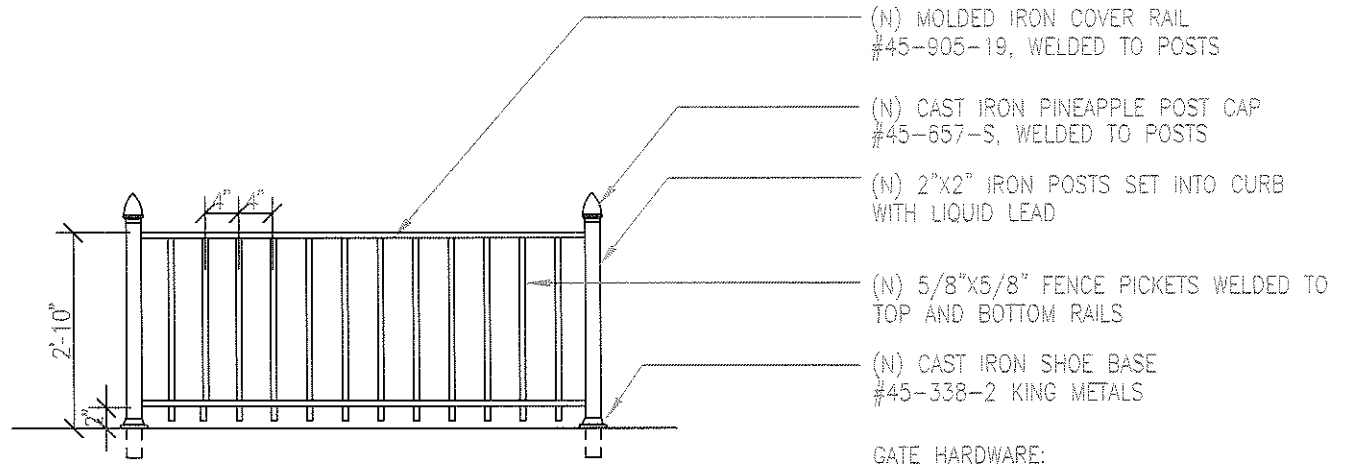
(4)



(5)



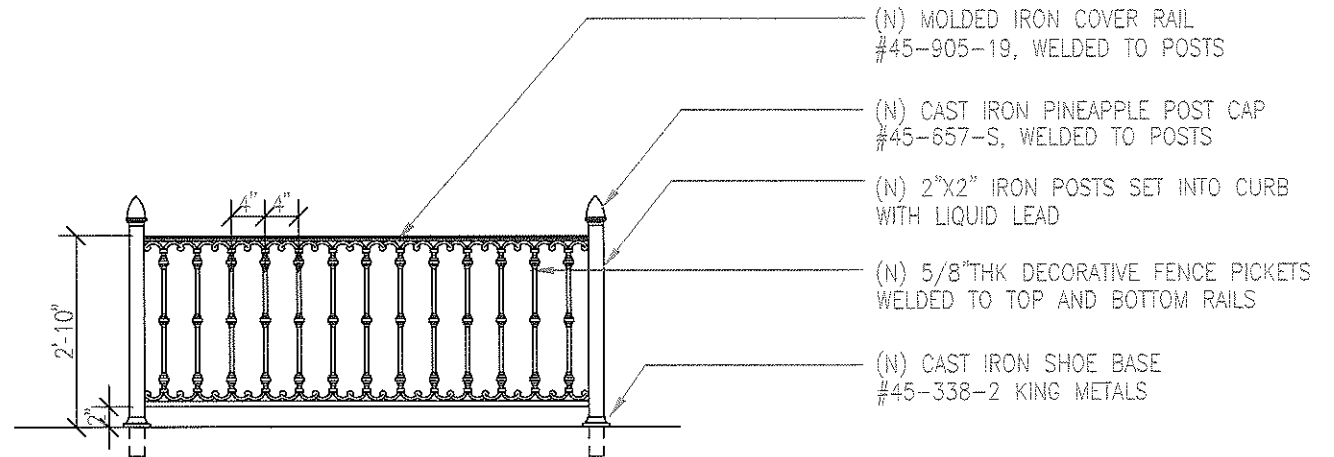




- (N) MOLDED IRON COVER RAIL
#45-905-19, WELDED TO POSTS
- (N) CAST IRON PINEAPPLE POST CAP
#45-857-S, WELDED TO POSTS
- (N) 2"x2" IRON POSTS SET INTO CURB
WITH LIQUID LEAD
- (N) 5/8"x5/8" FENCE PICKETS WELDED TO
TOP AND BOTTOM RAILS
- (N) CAST IRON SHOE BASE
#45-338-2 KING METALS

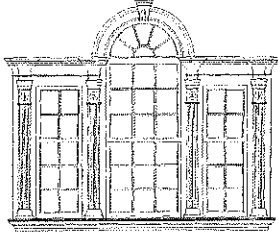
GATE HARDWARE:
 FORGED IRON LATCH #13-04000-446
 SPRING HINGE #31-4311 KING METALS

4 PROPOSED GARDEN FENCE DETAIL
 SCALE: 1/2" = 1'-0"



- (N) MOLDED IRON COVER RAIL
#45-905-19, WELDED TO POSTS
- (N) CAST IRON PINEAPPLE POST CAP
#45-857-S, WELDED TO POSTS
- (N) 2"x2" IRON POSTS SET INTO CURB
WITH LIQUID LEAD
- (N) 5/8" THK DECORATIVE FENCE PICKETS
WELDED TO TOP AND BOTTOM RAILS
- (N) CAST IRON SHOE BASE
#45-338-2 KING METALS

5 DECORATIVE OPTION B
 SCALE: 1/2" = 1'-0"



Liberty
Door and Window
60 Concord St
N. Reading, MA 01864

April 6, 2017

Beacon Hill Architectural Commission
Lisbeth Schwab
City of Boston Environment Department
Boston City Hall, Room 709
Boston, MA 02201

Re: 89 Beacon Street, Beacon Hill

Dear Ms. Schwab:

I was asked to inspect the existing window conditions and to offer my professional opinion and assessment on the possibility of restoration vs. replacement.

Existing Condition Survey: I inspected the entire property and observed that the majority of the windows are badly deteriorated and in such a severe state of disrepair, that salvage or restoration would be impossible. The sash, window frames and sills are badly rotted beyond merely filling them in; the dry-rot is extensive and likely caused by years of neglect and improper maintenance, the paint is all peeling and bare. The window frames have settled over time, making the sash function with great difficulty and include large gaps which are drafty; weather stripping would not solve nor adequately fill in the drafty gaps. The windows are deteriorated beyond repair.

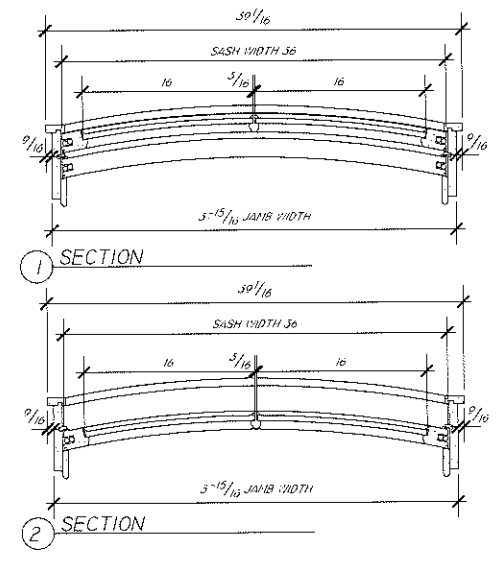
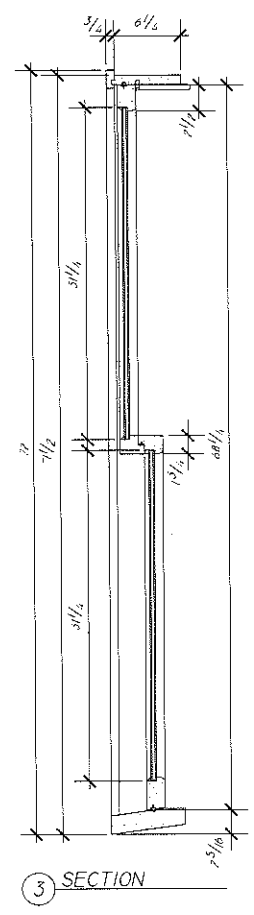
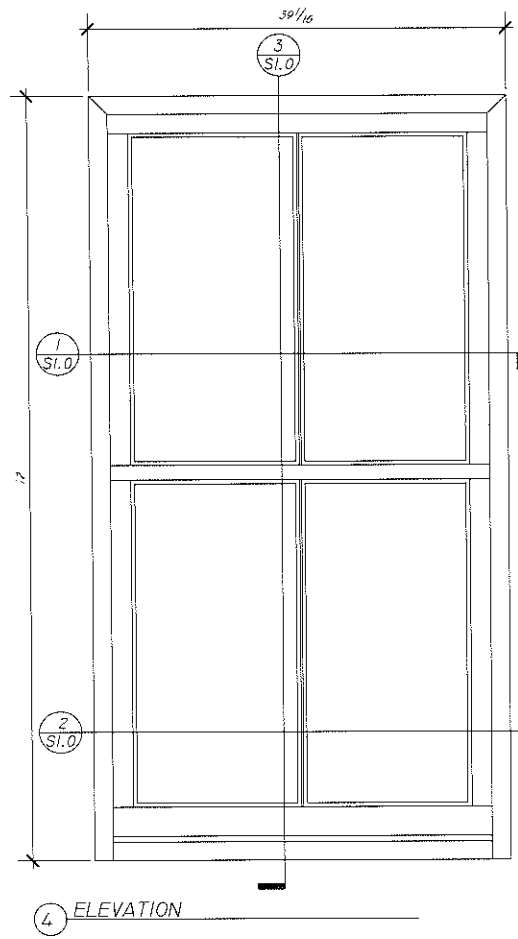
It is my recommendation that all (14) fourteen of the front windows be replaced, including (8) eight with curved-sash/segmented glass, custom fabricated, sized in-kind using solid Mahogany wood and follow the BHAC guidelines including wooden, double and triple-hung, historic duplicates, including sash, frame, sill and muntin dimensional requirements using true-divided glass panes. The Storm windows will be removed.

Sincerely,

Jim Maccario

Jim Maccario
Liberty Door and Window Company, Inc.
60 Concord St
N. Reading, MA 01864

EXISTING DIMENSIONS - match new windows



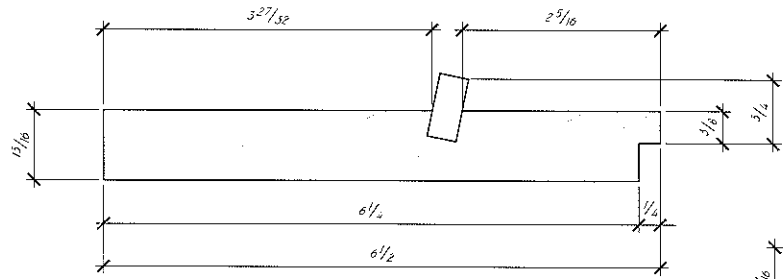
GENERAL NOTES:
 WOOD SPECIES: MAHOGANY
 INTERIOR FINISH: PAINTED BLACK
 EXTERIOR FINISH: PAINTED BLACK
 GLASS TYPE: 1/2" BOH LG BRONZE SP-CEP
 SASH LOCK(S):
 SASH PULL(S):
 SCREEN(S):

DOOR SWING:
 LOCK SET:
 HINGES:
 WEATHERSTIPS:
 DOOR BOTTOM:
 THRESHOLD:
 INT CASING:
 EXT CASING:

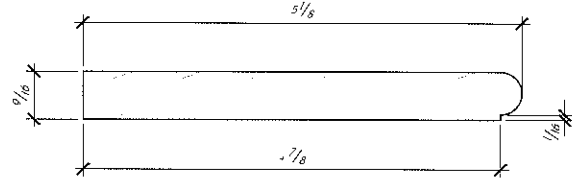
Liberty
 Door and Window
 60 Concord Street
 North Reading, MA 01864

JOB NUMBER:
 2017-02
 PPI:
 GREGG MARTIN
 ENGINEER:
 DATE: 05/10/2017
 REV 1:
 UNCHECKED:
 H TD
 REV 2:
 REV 3:
 REV 4:

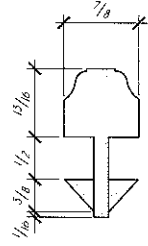
PROJECT NAME:
 89 BEACON STREET, BOSTON, MA
 TITLE:
 SASH ELEVATION AND SECTIONS
 DRAWING NUMBER:
 1.0
 PAGE 1 OF 2



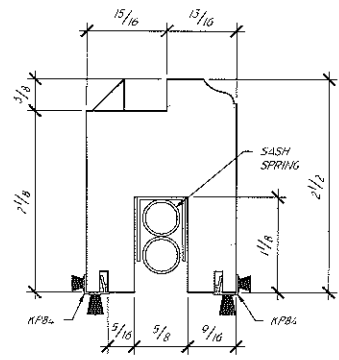
JAMB



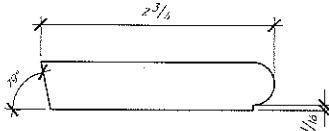
HEAD STOP



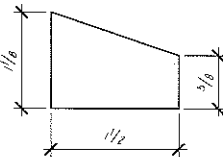
MUNTIN



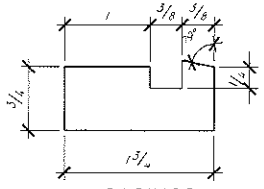
STILE



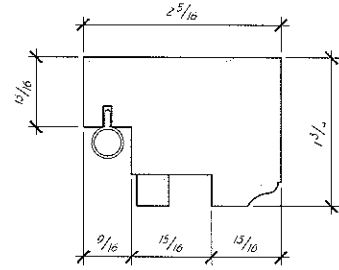
JAMB STOP



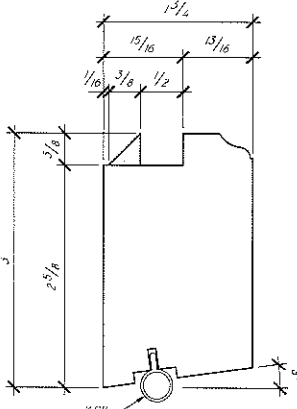
BRICK MOLD



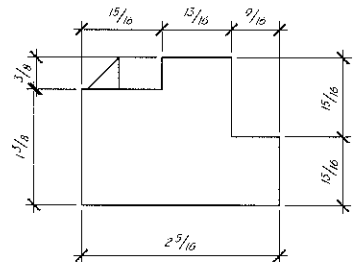
CASINGS



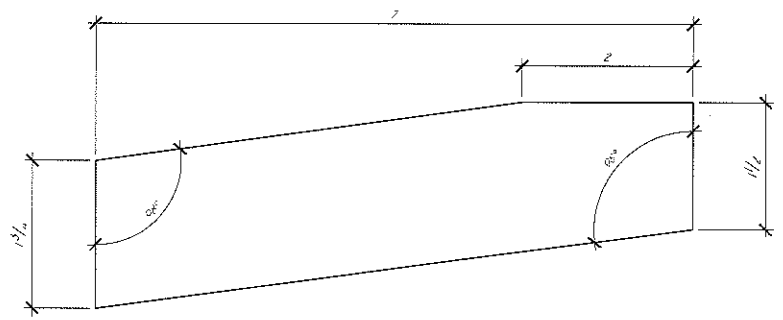
CENTER RAIL BOTTOM SASH



BOTTOM RAIL



CENTER RAIL TOP SASH



SILL

GENERAL NOTES:
 WOOD SPECIES: MAHOGANY
 INTERIOR FINISH: PAINTED BLACK
 EXTERIOR FINISH: PAINTED BLACK
 GLASS TYPE: L2" BOVIG BRONZE SPACER
 SASH LOCK (S):
 S-SH PULL(S):
 SCREEN(S):

DOOR SWING:
 LOCKSET:
 HINGES:
 WEATHERSTIPS:
 DOOR BOTTOM:
 THRESHOLD:
 INT CASING:
 EXT CASING:

Liberty
Door and Window
 60 Concord Street
 North Reading, MA 01864

JOB NUMBER:
 2017-02
 P/E:
 GREGG MARTIN
 ENGINEER:
 DIV DATE:
 05/16/2017
 REV 1:
 REV 2:
 REV 3:
 REV 4:

PROJECT NAME:
 89 BELCON STREET, BOSTON, MA
 TITLE:
 WINDOW PROFILES
 DRAWING NUMBER:
 1.1
 PAGE 2 OF 2

TIMBERLANE

Because every "Welcome Home" moment should be extraordinary

[Q \(/search-results/\)](#)

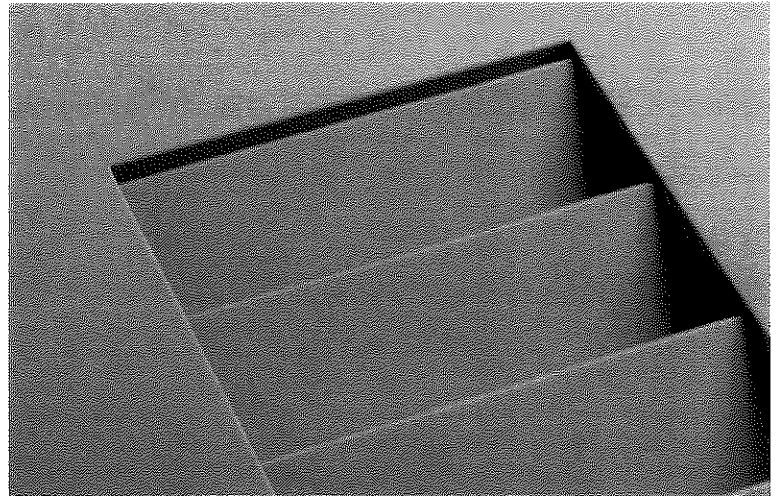
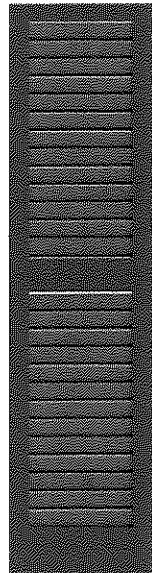
[☎ \(tel:8002502221\)](tel:8002502221)

SW1: 2-1/2" FIXED LOUVER

Plantation style with a modern flourish. Set at a 20-degree pitch, these extra wide louvers make a grand statement: steeped in tradition, but full of contemporary appeal. In addition to its application as exterior shutters, this style also makes a graceful transition inside as closet and cabana doors.

Specifications

Stiles	2-1/2"
Top Rail	2-1/2"
Middle Rail(s)	4-1/4"
Bottom Rail	3" to 5"
Stile/Rail Thickness	1-5/16"
Louver Pitch	20 degrees
Louver Spacing	2-1/4" on center
Louver Thickness	3/8"



SW1 - 2 1/2" Fixed Louver 

CHOOSE THE WOOD SPECIES THAT IS RIGHT FOR YOU

MOST POPULAR



WESTERN RED CEDAR

is a beautiful, fine-grained wood that has natural tannins to help preserve its character, quality, and long lasting durability. It is naturally resistant to decay, insects, and weather, and every piece of cedar we use is hand-selected and patiently kiln-dried. We pride ourselves in our kiln-dried process because it reduces the cedar's moisture content and the wood's expansion in years to come when exposed to the elements.

- Naturally resistant to decay, insects, & weather
- Beautiful fine-grained wood
- Kiln-dried to reduce moisture and expansion

SPECIALTY WOOD



SPANISH CEDAR

also known as cigar box cedar, is a fine hardwood. It has similar characteristics to Western Red Cedar but with its own enduring charm. Naturally resistant to decay, Spanish Cedar is also known for its durability. Unlike Western Red Cedar, this type of wood has a more even colored grain preferable for staining or clear, natural finishes.

- Naturally resistant to decay
- Known for its durability as well as its exceptional light weight.
- Even colored grain preferable for staining or clear, natural finishes
- Kiln-dried to reduce moisture and expansion



SAPELE MAHOGANY

a wood in the Mahogany family, delivers a dramatic impact. It is a luxurious wood, with a straight, open, and attractive grain, that looks beautiful either stained or with a clear, natural finish. Being one of the strongest, most water-resistant woods, Timberlane Shutters are considered nothing short of a woodworking masterpiece. Timberlane Sapele shutters are indeed for those people who will not settle for anything less.

- One of the strongest, most water-resistant woods
- Interlocking grain produces light & dark ribbon stripes throughout
- Natural luster & depth, further enhanced with stain and clear-coating
- Kiln-dried to reduce moisture and expansion



MERANTI

sometimes referred to as Philippine Mahogany, is known for its rich, deep reddish brown tones and beautiful grain. Meranti wood adorns many outdoor structures, but is most recognized for its use in the famous Chris Craft boats. With a stain or clear, natural finish, Meranti's luster and strength make it an excellent choice for outdoor use, including decking, door and window frames and shutters.

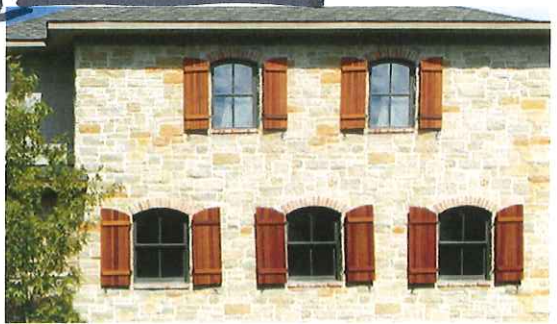
- Color and strength resemble Mahogany woods
- No characteristic aroma; generally termite resistant
- Performance and rich luster are improved with stain or clear-coat finishes
- Kiln-dried to reduce moisture and expansion







RED GRANDIS

is an increasingly popular hardwood choice because of its beautiful, straight grains and dimensional stability that is similar to Cherry, Sapele and Hard Maple woods. Ranging from light pinkish to reddish brown, its grain consistency makes it an extraordinary choice for achieving a rich, high impact luster in stained and clear finishes; but its durability makes it a noteworthy for painted finishes as well. Red Grandis' tight grains provide better water-resiliency than soft woods, and can be found on exquisite, high-end furniture and cabinetry as well as windows, doors, decking, exterior siding and trim, and other outdoor furniture.

- Offers similar durability to Meranti or Sapele and stability of Cherry and Hard Maple
- Consistent, straight grains produce a beautiful appearance with stain or clear-coating
- Tight pattern offers added resistance to natural elements
- Kiln-dried to reduce moisture and expansion



A CLOSER LOOK AT SPECIALTY WOODS

SPECIALTY LUMBER:	SPANISH CEDAR	SAPELE	MERANTI Dark Red Nemesu	RED GRANDIS
COLOR:	Light pinkish to reddish brown	Dark reddish brown	Dark reddish brown	Light pinkish to reddish brown
STAINING:	Stains well	Stains well	Stains well	Stains well
GROWTH AREA:	Central & South America and the Caribbean	Tropical Africa	Southeast Asia	Latin America
SUITABLE FOR EXTERIOR USE:	Excellent	Excellent	Excellent	Excellent
ALSO KNOWN AS:	Cedro	Sapelli, Sapeli	Dark Red Lauan, Dark Red Philippine Mahogany	Eucaluptus Grandis, rose gum
COMMON USES:	Cabinetry, fine furniture, musical instruments, boat building, cigar boxes	Furniture, cabinetry, decorative veneers, plywood, flooring, paneling	Furniture, flooring, decking, paneling, door and window frames, boat building, vehicle floor boards	Furniture, cabinetry, flooring, decking, windows, doors, exterior siding and trim, outdoor furniture
DURABILITY:	Resistant to termites	Resistance to termites is moderate	Generally termite resistant	Resistance to termites is moderate
GRAIN:	Straight or shallow interlocked	Interlocked and sometimes wavy	Straight or interlocked	Straight or slightly interlocked
SMELL:	Distinctive cedar-like aroma	Cedar-like aroma	No characteristic aroma	No characteristic aroma
BENDING STRENGTH (Dry):	11,300 psi	17,895 psi	17,761 psi	11,250 psi
AVERAGE WEIGHT (Dry):	29 lbs./ft ³	42 lbs./ft ³	42 lbs./ft ³	42 lbs./ft ³
JANKA HARDNESS:	600 lbf	1410 lbf	800 lbf	720 lbf
RADIAL SHRINKAGE:	4%	5%	4%	3%
GRAIN APPEARANCE:				

All wood is a product of nature, and therefore, present natural variations in grain and coloring. These unique traits typically emerge from the weather conditions and soil during the wood's development and create the distinctive grains and mineral streaks, which add to the overall attractiveness. Stains will enhance the omnipresent beauty of each piece of wood, which means you will see inherent differences between shutters, and sometimes on the same shutter. These variations are not considered a defect or reason for replacement, but rather, coloring differences, mineral streaks and unusual graining, are widely considered as characteristic of natural wood and part of its overall appeal.

TIMBERLANE

Because every "Welcome Home" moment should be extraordinary

[Q \(/search-results/\)](/search-results/)

[☎ \(tel:8002502221\)](tel:8002502221)

SHUTTER COLORS

Color is such an individual decision, which is why Timberlane offers an extensive palette of 24 premium colors, custom color matching, and for Premium Wood Shutters, a variety of additional finishing options, too. Whether you like traditional or bold, contrasting or complimentary, the key is to go with the color that best reflects your individual style.

FACTORY PAINTED – 24 PREMIUM COLORS

Timberlane's special factory multi-step painting process is designed to deliver rich colors and long-lasting beauty. Our Premium Colors are achieved through a specially-formulated water-based paint and finish system that provides optimal protection against weather, allowing the substrate to withstand direct exposure to rain, snow and moisture and offering high resistance to light and UV rays for the longest coating film life and greater stability. We have carefully selected these Premium Colors to appeal to a wide variety of architectural styles and tastes. You can always speak to a Timberlane expert for recommendations about which color options will work best with your home's exterior color.



http://www.timberlane.com/wp-content/uploads/2016/11/Timberlane_paint-card.png

Download Our Color Chart (PDF) (/wp-content/uploads/2016/11/Timberlane_paint_card.pdf)

TIMBERLANE

Because every "Welcome Home" moment should be extraordinary

[Q \(/search-results/\)](#)

[☎ \(tel:8002502221\)](tel:8002502221)

EXTERIOR SHUTTER CAPPING

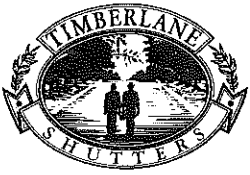
Capping provides both aesthetic appeal and added protection. There are two capping materials available.



Aluminum – Available standard or as an upgrade on some brands.



Copper – Available as a Upgrade on most shutters



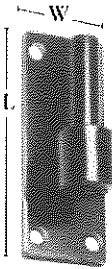
TIMBERLANE

HARDWARE GUIDE

Timberlane, Inc. • 150 Domorah Drive • Montgomeryville, PA 18936 • 800 250 2221 • Timberlane.com

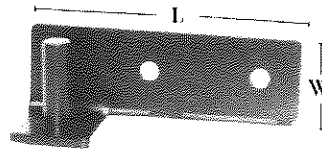
Copyright © 2015 Timberlane, Inc. 081015-SP

PINTELS: 1/2" Pin - Heavy Duty



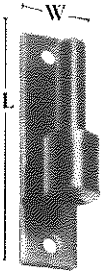
Heavy Duty Plate Pintels
Sold per pair: 2 Pintels with Required Fasteners

Item #	Offset	Pin Dia.	Plate Thickness	Plate Width	Plate Length
2062	1"	1/2"	3/16"	1-1/2"	4"
2062S	1"	1/2"	3/16"	1-1/2"	4"
2063	2"	1/2"	3/16"	1-1/2"	4"
2063S	2"	1/2"	3/16"	1-1/2"	4"
2064	3"	1/2"	3/16"	1-1/2"	4"
2065	4"	1/2"	3/16"	1-1/2"	4"



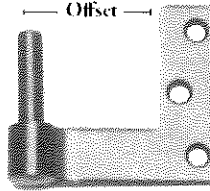
Heavy Duty Brick Mount Pintels
Sold per pair: 2 Pintels with Required Fasteners
Left and Right Specific

Item #	Offset	Pin Dia.	Plate Thickness	Plate Width	Plate Length
2070(L)	1"	1/2"	3/16"	1-1/2"	4-3/4"
2070(R)	1"	1/2"	3/16"	1-1/2"	4-3/4"



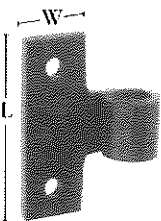
Heavy Duty Narrow Plate Pintels
Sold per pair: 2 Pintels with Required Fasteners

Item #	Offset	Pin Dia.	Plate Thickness	Plate Width	Plate Length
2042	1"	1/2"	3/16"	1"	4"
2042S	1"	1/2"	3/16"	1"	4"
2043	2"	1/2"	3/16"	1"	4"
2043S	2"	1/2"	3/16"	1"	4"
2044	3"	1/2"	3/16"	1"	4"



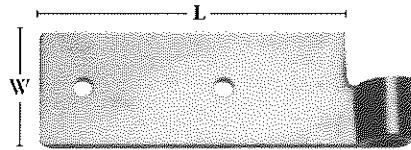
Heavy Duty Jamb Pintels
Sold per pair: 2 Pintels with Required Fasteners

Item #	Offset	Pin Dia.	Plate Thickness	Plate Width	Plate Length
2032	1"	1/2"	3/16"	1"	3-1/4"
2033	2"	1/2"	3/16"	1"	3-1/4"
2034	3"	1/2"	3/16"	1"	3-1/4"



Heavy Duty T-Notched Pintel (Hinge)
Sold per pair: 2 Pintels with Required Fasteners

Item #	Offset	Sleeve Dia.	Plate Thickness	Plate Width	Plate Length
2077	0"	1/2"	3/16"	1"	3"
2050	0"	1"	3/16"	1"	3"
2051	0"	1 1/2"	3/16"	1"	3"



Heavy Duty Notched Pintels
Sold per pair: 2 Pintels with Required Fasteners - Left and Right Specific - For use with Heavy Duty Tapered Strap Hinge w/Attached Pin

Item #	Offset	Sleeve Dia.	Plate Thickness	Plate Width	Plate Length
2075(L)	0"	1/2"	3/16"	2"	4-3/4"
2075(R)	0"	1/2"	3/16"	2"	4-3/4"

Heavy Duty Adjustable Pintels
Sold per pair: 2 Pintels



Item #	Type	Offset	Pin Dia.	Bolt Length	Bolt Dia.
2071	Lag Bolt	Adj.	1/2"	4"	1/2"
2071S	Lag Bolt	Adj.	1/2"	4"	1/2"
2072	Lag Bolt	Adj.	1/2"	6"	1/2"

PINTELS: 3/8" Pin - Standard Duty

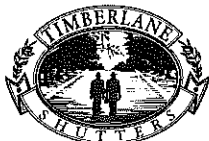
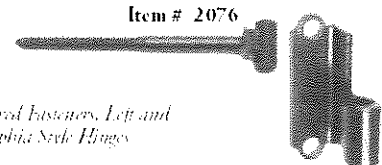


Standard Duty Plate and Lag Pintels
Sold per pair: 2 Pintels with Required Fasteners

Item #	Offset	Pin Dia.	Plate Thickness	Plate Width	Plate Length	Bolt Length	Bolt Dia.
2081S	1/2"	3/8"	1/8"	1-1/2"	4"	N/A	N/A
2082S	1-1/2"	3/8"	1/8"	1-1/2"	4"	N/A	N/A
2083S	2-1/4"	3/8"	1/8"	1-1/2"	4"	N/A	N/A
2090S	Adj.	3/8"	N/A	N/A	4"	3/8"	3/8"
2091S	Adj.	3/8"	N/A	N/A	N/A	5-7/8"	3/8"

Philadelphia Style Pintels
Sold per pair: 2 Pintels with Required Fasteners, Left and Right Specific for use with Philadelphia Neck Hinges

Item #	Offset	Sleeve Dia.	Plate Thickness	Plate Width	Plate Length
2085(L)	1"	3/8"	1/8"	3/4"	2-1/2"
2085(R)	1"	3/8"	1/8"	3/4"	2-1/2"
2086(L)	2"	3/8"	1/8"	3/4"	2-1/2"
2086(R)	2"	3/8"	1/8"	3/4"	2-1/2"
2087(L)	3"	3/8"	1/8"	3/4"	2-1/2"
2087(R)	3"	3/8"	1/8"	3/4"	2-1/2"
2076	Adj.	3/8"	N/A	N/A	N/A



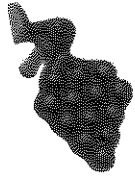
FIND MORE RESOURCES AT WWW.TIMBERLANE.COM

Timberlane, Inc. • 150 Domorah Drive • Montgomeryville, PA 18936 • 800 250 2221 • Timberlane.com

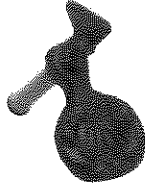
Copyright © 2015 Timberlane, Inc. 081015-SP

SHUTTER TIEBACKS (SHUTTER DOGS)

(all tiebacks sold per pair)



Vintage Grape 5"
Item # Mount Type
35101 Lag
35102 Plate
35103 Sill



Shell 4"
Item # Mount Type
35201 Lag
35202 Plate
35203 Sill



Star 5"
Item # Mount Type
35301 Lag
35302 Plate
35303 Sill



"S" Beveled 7"
Item # Mount Type
35401 Lag
354015 Lag
35402 Plate
35403 Sill



"S" Floral 6-1/2"
Item # Mount Type
36501 Lag
36502 Plate
36503 Sill



Rat Tail 5-3/4"
Item # Mount Type
35501 Lag
355015 Lag
35504 Plate
35503 Sill



Propeller 7-1/2"
Item # Mount Type
35601 Lag
35602 Plate
35603 Sill



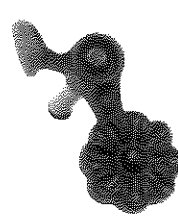
Antique Flower 4-1/4"
Item # Mount Type
35701 Lag
35702 Plate
35703 Sill



Scallop 5"
Item # Mount Type
35751 Lag



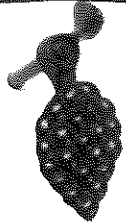
Soldier 4"
Item # Mount Type
35801 Lag
35802 Plate
35803 Sill



Flower 5"
Item # Mount Type
35755 Lag
35756 Sill



Beveled Curl 5-3/4"
Item # Mount Type
35757 Lag
35758 Sill



Grape 5"
Item # Mount Type
35759 Lag
35760 Sill



English Rat Rail 6-1/2"
Item # Mount Type
36401 Lag
36402 Plate
36403 Sill



English Rat Rail 6-1/2"
Item # Mount Type
36410 Lag
36411 Plate
36412 Sill

Offset



Belmont (Sm.) 5-1/2"
Item # Mount Type
35901 Lag
35902 Plate
35903 Sill



Belmont (Med.) 6-1/2"
Item # Mount Type
35921 Lag
35922 Plate
35923 Sill



Belmont (Large) 8-1/2"
Item # Mount Type
35931 Lag
35932 Lag
35933 Plate



Beacon Hill 6-1/2"
Item # Mount Type
36001 Lag
36002 Plate
36003 Sill



Beacon Hill 4"
Item # Mount Type
36010 Lag
36011 Plate

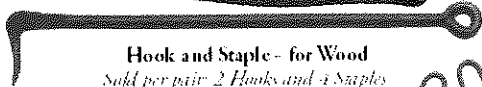
Offset



Sea Horse 7"
Item # Mount Type
37201 Lag
37202 Plate
37203 Sill



Dolphin 7"
Item # Mount Type
37801 Lag
37802 Plate
37803 Sill

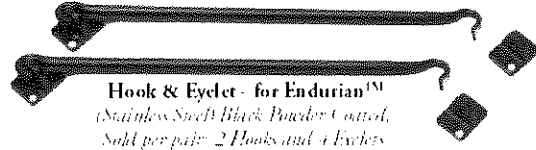


Hook and Staple - for Wood
Sold per pair: 2 Hooks and 4 Staples

Item #	Length	Diameter
52121	12"	3/8"
52161	16"	3/8"
52181	24"	3/8"



Boxed Item Available in Stainless Steel




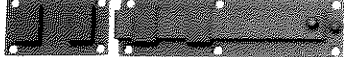
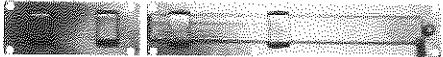

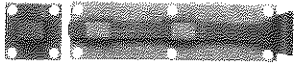
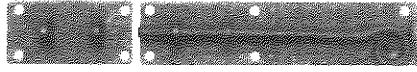
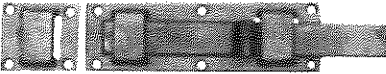
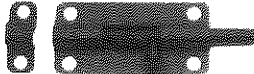
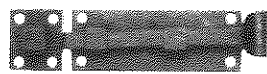

Hook & Eyelet - for Endurian™
(Stainless Steel) Black Powder Coat.
Sold per pair: 2 Hooks and 4 Eyelets

Item #	Length	Diameter
521215	12"	3/8"
521615	16"	3/8"

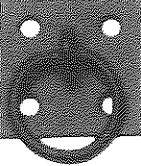




FIND MORE RESOURCES AT WWW.TIMBERLANE.COM

SHUTTER LOCKS (sold individually, with required fasteners)

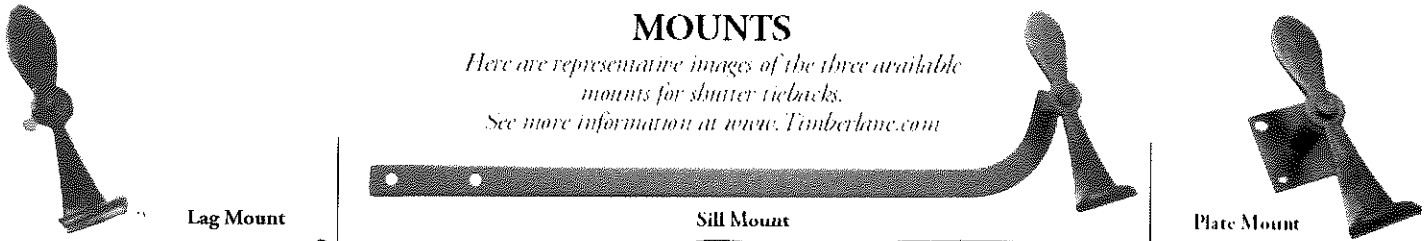
 Slide Bolt <table border="1" style="width: 100%; border-collapse: collapse;"> <tr> <th>Item #</th> <th>Length of Bolt Plate</th> <th>Overall Length</th> <th>Height</th> </tr> <tr> <td>30102</td> <td>9"</td> <td>12-3/4"</td> <td>1-3/4"</td> </tr> </table>	Item #	Length of Bolt Plate	Overall Length	Height	30102	9"	12-3/4"	1-3/4"	 Slide Bolt <table border="1" style="width: 100%; border-collapse: collapse;"> <tr> <th>Item #</th> <th>Length of Bolt Plate</th> <th>Overall Length</th> <th>Height</th> </tr> <tr> <td>30104</td> <td>7-1/4"</td> <td>10-3/4"</td> <td>2"</td> </tr> </table>	Item #	Length of Bolt Plate	Overall Length	Height	30104	7-1/4"	10-3/4"	2"	 Slide Bolt <table border="1" style="width: 100%; border-collapse: collapse;"> <tr> <th>Item #</th> <th>Length of Bolt Plate</th> <th>Overall Length</th> <th>Height</th> </tr> <tr> <td>30101</td> <td>11"</td> <td>16"</td> <td>2"</td> </tr> </table>	Item #	Length of Bolt Plate	Overall Length	Height	30101	11"	16"	2"							
Item #	Length of Bolt Plate	Overall Length	Height																														
30102	9"	12-3/4"	1-3/4"																														
Item #	Length of Bolt Plate	Overall Length	Height																														
30104	7-1/4"	10-3/4"	2"																														
Item #	Length of Bolt Plate	Overall Length	Height																														
30101	11"	16"	2"																														
 Slide Bolt <table border="1" style="width: 100%; border-collapse: collapse;"> <tr> <th>Item #</th> <th>Length of Bolt Plate</th> <th>Overall Length</th> <th>Height</th> </tr> <tr> <td>30103S</td> <td>7-7/8"</td> <td>12"</td> <td>2"</td> </tr> </table>	Item #	Length of Bolt Plate	Overall Length	Height	30103S	7-7/8"	12"	2"	 Slide Bolt <table border="1" style="width: 100%; border-collapse: collapse;"> <tr> <th>Item #</th> <th>Length of Bolt Plate</th> <th>Overall Length</th> <th>Height</th> </tr> <tr> <td>30106</td> <td>6"</td> <td>7-5/4"</td> <td>1-3/4"</td> </tr> </table>	Item #	Length of Bolt Plate	Overall Length	Height	30106	6"	7-5/4"	1-3/4"	 Slide Bolt <table border="1" style="width: 100%; border-collapse: collapse;"> <tr> <th>Item #</th> <th>Length of Bolt Plate</th> <th>Overall Length</th> <th>Height</th> </tr> <tr> <td>30105</td> <td>6-7/8"</td> <td>10-1/8"</td> <td>1-11/16"</td> </tr> </table>	Item #	Length of Bolt Plate	Overall Length	Height	30105	6-7/8"	10-1/8"	1-11/16"							
Item #	Length of Bolt Plate	Overall Length	Height																														
30103S	7-7/8"	12"	2"																														
Item #	Length of Bolt Plate	Overall Length	Height																														
30106	6"	7-5/4"	1-3/4"																														
Item #	Length of Bolt Plate	Overall Length	Height																														
30105	6-7/8"	10-1/8"	1-11/16"																														
 Slide Bolt <table border="1" style="width: 100%; border-collapse: collapse;"> <tr> <th>Item #</th> <th>Length of Bolt Plate</th> <th>Overall Length</th> <th>Height</th> </tr> <tr> <td>30108</td> <td>6-3/8"</td> <td>8-5/8"</td> <td>2"</td> </tr> </table>	Item #	Length of Bolt Plate	Overall Length	Height	30108	6-3/8"	8-5/8"	2"	 Slide Bolt <table border="1" style="width: 100%; border-collapse: collapse;"> <tr> <th>Item #</th> <th>Length of Bolt Plate</th> <th>Overall Length</th> <th>Height</th> </tr> <tr> <td>30110</td> <td>3"</td> <td>3-5/8"</td> <td>1-3/8"</td> </tr> </table>	Item #	Length of Bolt Plate	Overall Length	Height	30110	3"	3-5/8"	1-3/8"	 Slide Bolt <table border="1" style="width: 100%; border-collapse: collapse;"> <tr> <th>Item #</th> <th>Length of Bolt Plate</th> <th>Overall Length</th> <th>Height</th> </tr> <tr> <td>30107</td> <td>4"</td> <td>5-1/4"</td> <td>1-1/2"</td> </tr> </table>	Item #	Length of Bolt Plate	Overall Length	Height	30107	4"	5-1/4"	1-1/2"	 Slide Bolt <table border="1" style="width: 100%; border-collapse: collapse;"> <tr> <th>Item #</th> <th>Dia.</th> <th>Overall Length</th> </tr> <tr> <td>30109</td> <td>3/8"</td> <td>8"</td> </tr> </table>	Item #	Dia.	Overall Length	30109	3/8"	8"
Item #	Length of Bolt Plate	Overall Length	Height																														
30108	6-3/8"	8-5/8"	2"																														
Item #	Length of Bolt Plate	Overall Length	Height																														
30110	3"	3-5/8"	1-3/8"																														
Item #	Length of Bolt Plate	Overall Length	Height																														
30107	4"	5-1/4"	1-1/2"																														
Item #	Dia.	Overall Length																															
30109	3/8"	8"																															

PULL RINGS (sold individually)


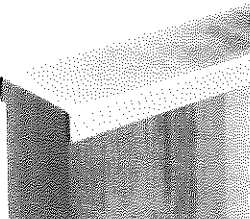
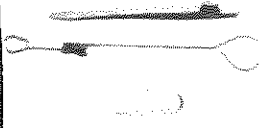
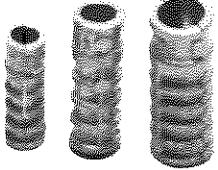
 Pull Ring <table border="1" style="width: 100%; border-collapse: collapse;"> <tr> <th>Item #</th> <th>Mount Type</th> </tr> <tr> <td>53101</td> <td>Plate - Large</td> </tr> </table>	Item #	Mount Type	53101	Plate - Large	 Pull Ring <table border="1" style="width: 100%; border-collapse: collapse;"> <tr> <th>Item #</th> <th>Mount Type</th> </tr> <tr> <td>53103</td> <td>Screw-In</td> </tr> </table>	Item #	Mount Type	53103	Screw-In	 Pull Ring <table border="1" style="width: 100%; border-collapse: collapse;"> <tr> <th>Item #</th> <th>Mount Type</th> </tr> <tr> <td>53102 53102S</td> <td>Plate - Small</td> </tr> </table>	Item #	Mount Type	53102 53102S	Plate - Small
Item #	Mount Type													
53101	Plate - Large													
Item #	Mount Type													
53103	Screw-In													
Item #	Mount Type													
53102 53102S	Plate - Small													

MOUNTS

*Here are representative images of the three available mounts for shutter tiebacks.
See more information at www.Timberlane.com*



MISCELLANEOUS HARDWARE

 Escutcheon Plate <i>for use with lag pintels or as a shim with Plate Pintels</i> <table border="1" style="width: 100%; border-collapse: collapse;"> <tr> <th>Item #</th> <th>Size</th> </tr> <tr> <td>2073</td> <td>1-1/2" x 4"</td> </tr> </table>	Item #	Size	2073	1-1/2" x 4"	 Shutter Capping <i>sold per linear foot will fit over shutters 1-5/16" or less</i> <table border="1" style="width: 100%; border-collapse: collapse;"> <tr> <th>Item #</th> <th>Material Type</th> </tr> <tr> <td>57101</td> <td>Aluminum</td> </tr> <tr> <td>57102</td> <td>Copper</td> </tr> </table>	Item #	Material Type	57101	Aluminum	57102	Copper	 New England Spring Latch <i>sold per pair, galvanized - unpainted</i> <table border="1" style="width: 100%; border-collapse: collapse;"> <tr> <th>Item #</th> <th>Size</th> <th>Type</th> </tr> <tr> <td>F38210</td> <td>3/16" x 2-1/4"</td> <td>Tapcon - Hex Head</td> </tr> <tr> <td>F38211</td> <td>3/16" x 2-1/4"</td> <td>Tapcon - Flat Head</td> </tr> <tr> <td>F40100</td> <td>#12 x 1-1/4"</td> <td>Pan Head</td> </tr> <tr> <td>F40150</td> <td>#10 x 1"</td> <td>Pan Head</td> </tr> <tr> <td>F40200</td> <td>#12 x 1-1/4"</td> <td>Flat Head</td> </tr> <tr> <td>F40250</td> <td>#10 x 1"</td> <td>Flat Head</td> </tr> </table>	Item #	Size	Type	F38210	3/16" x 2-1/4"	Tapcon - Hex Head	F38211	3/16" x 2-1/4"	Tapcon - Flat Head	F40100	#12 x 1-1/4"	Pan Head	F40150	#10 x 1"	Pan Head	F40200	#12 x 1-1/4"	Flat Head	F40250	#10 x 1"	Flat Head	 Lag Bolt Expansion Shields <i>sold individually</i> <table border="1" style="width: 100%; border-collapse: collapse;"> <tr> <th>Item #</th> <th>Length</th> </tr> <tr> <td>F38180</td> <td>1/4"</td> </tr> <tr> <td>F38181</td> <td>3/8"</td> </tr> <tr> <td>F38182</td> <td>1/2"</td> </tr> </table>	Item #	Length	F38180	1/4"	F38181	3/8"	F38182	1/2"
Item #	Size																																									
2073	1-1/2" x 4"																																									
Item #	Material Type																																									
57101	Aluminum																																									
57102	Copper																																									
Item #	Size	Type																																								
F38210	3/16" x 2-1/4"	Tapcon - Hex Head																																								
F38211	3/16" x 2-1/4"	Tapcon - Flat Head																																								
F40100	#12 x 1-1/4"	Pan Head																																								
F40150	#10 x 1"	Pan Head																																								
F40200	#12 x 1-1/4"	Flat Head																																								
F40250	#10 x 1"	Flat Head																																								
Item #	Length																																									
F38180	1/4"																																									
F38181	3/8"																																									
F38182	1/2"																																									

Bowditch Item Available in Stainless Steel



FIND MORE RESOURCES AT WWW.TIMBERLANE.COM

Dealer Login

Wish list

Enter product code, category,

FRONT ENTRY PENDENT



Northeast Lantern

MADE IN THE USA

MAKING LANTERNS SINCE 1987



HOME * OUR PRODUCTS * OUR STORY * FINISH & GLASS * FIND A DEALER * CONTACT

CHOOSE A PRODUCT | CHOOSE A COLLECTION | NEW PRODUCTS | QUICK SHIP LANTERNS
CUSTOM LIGHTING

Our Products » Choose a Collection » Crown » Crown 6704

CROWN 6704

PRODUCT CODE: #6704-DAB-LT2-CSG

Like this lantern? Create the product code by selecting the size, finish and glass type to add the lantern to your wish list. Use your wish list to share the product code with your local dealer.

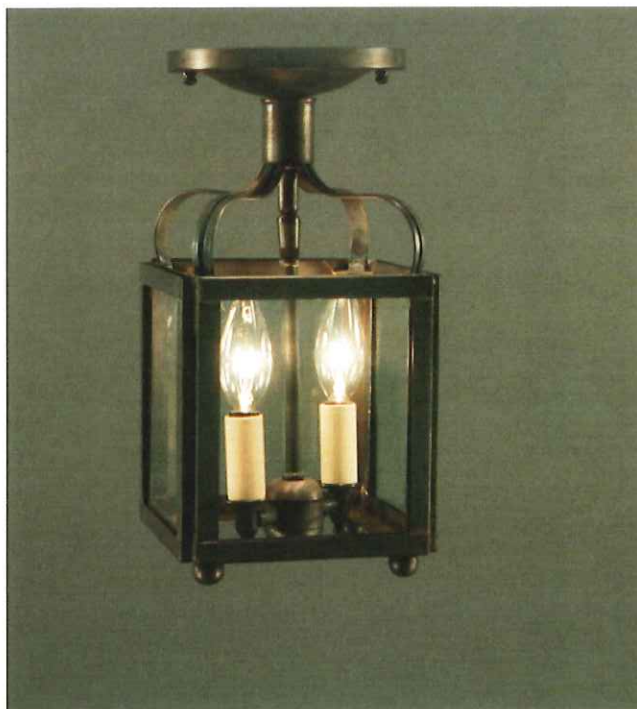
Finish:

Socket:

Glass:

Quantity:

[VIEW WISH LIST](#)



Details

Dimensions: 6.25"W x 6.25"D x 12.25"H

Bulb type: Two 60 Watt Candelabra Base Bulbs

Suitable location: Dry

Backplate: 5.75" Diam. Ceiling Canopy

Sorry, currently there is no spec sheet available for this product. We will upload as soon as it is available.

Alternate views



09 BEACON ST.

Available Accessories

Finish options



Raw
Brass



Raw
Copper



Antique
Brass



Antique
Copper



Dark
Antique
Brass



Dark
Brass



Verdi Gris

Glass options



Clear



Clear
Seedy



Seedy
Marine



Frosted



Corduroy



Caramel



White

CONTACT US

info@northeastlantern.com

[Visit our contact page](#)

CONNECT

JOIN OUR MAILING LIST!

Enter email address

OUR

LANTERNS

Find out
what makes
them so
special



SITMAP

- Home
- Our Products
- Our Story
- Finish & Glass
- Find a Dealer
- Contact

COPYRIGHT © 2017 NORTHEAST LANTERN LTD. ALL RIGHTS RESERVED.

Site created by Be Better Studios



Northeast Lantern

MADE IN THE USA

MAKING LANTERNS SINCE 1987



- HOME *
- OUR PRODUCTS *
- OUR STORY *
- FINISH & GLASS *
- FIND A DEALER *
- CONTACT

- CHOOSE A PRODUCT
- CHOOSE A COLLECTION
- NEW PRODUCTS
- QUICK SHIP LANTERNS
- CUSTOM LIGHTING

Our Products » Choose a Collection » Andrews » Andrews 3911

ANDREWS 3911

(2) AT NEAR BRICK WALL

PRODUCT CODE: #3911-DAB-LT2-CSG

Like this lantern? Create the product code by selecting the size, finish and glass type to add the lantern to your wish list. Use your wish list to share the product code with your local dealer.

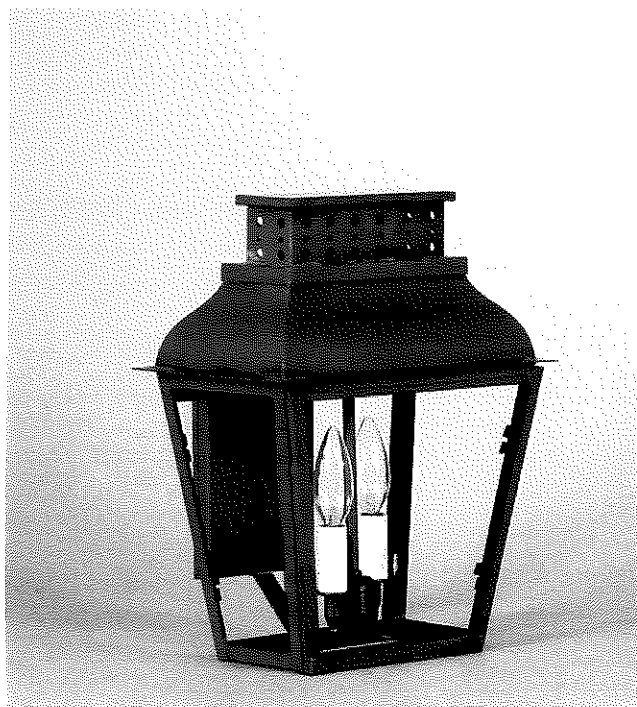
Finish:

Socket:

Glass:

✓ Quantity:

[VIEW WISH LIST](#)



Alternate views



89 BEACON STREET

Details

Dimensions: 11"W x 8.25"D x 14.25"H

Mounting height: 8.75"

Bulb type: Two 60 Watt Candelabra Base Bulbs

Suitable location: Wet

Backplate: 4.25 x 7

Sorry, currently there is no spec sheet available for this product. We will upload as soon as it is available.

Other Sizes Available

3921 (12"W x 9.25"D x 15"H)

Finish options



Antique Brass



Antique Copper



Dark Antique Brass



Dark Brass



Raw Brass



Raw Copper



Verdi Gris

Glass options



Clear



Clear Seedy



Seedy Marine



Frosted

CONTACT US

info@northeastlantern.com

[Visit our contact page](#)

CONNECT

JOIN OUR MAILING LIST!

Enter email address

OUR

LANTERNS

Find out what makes them so special



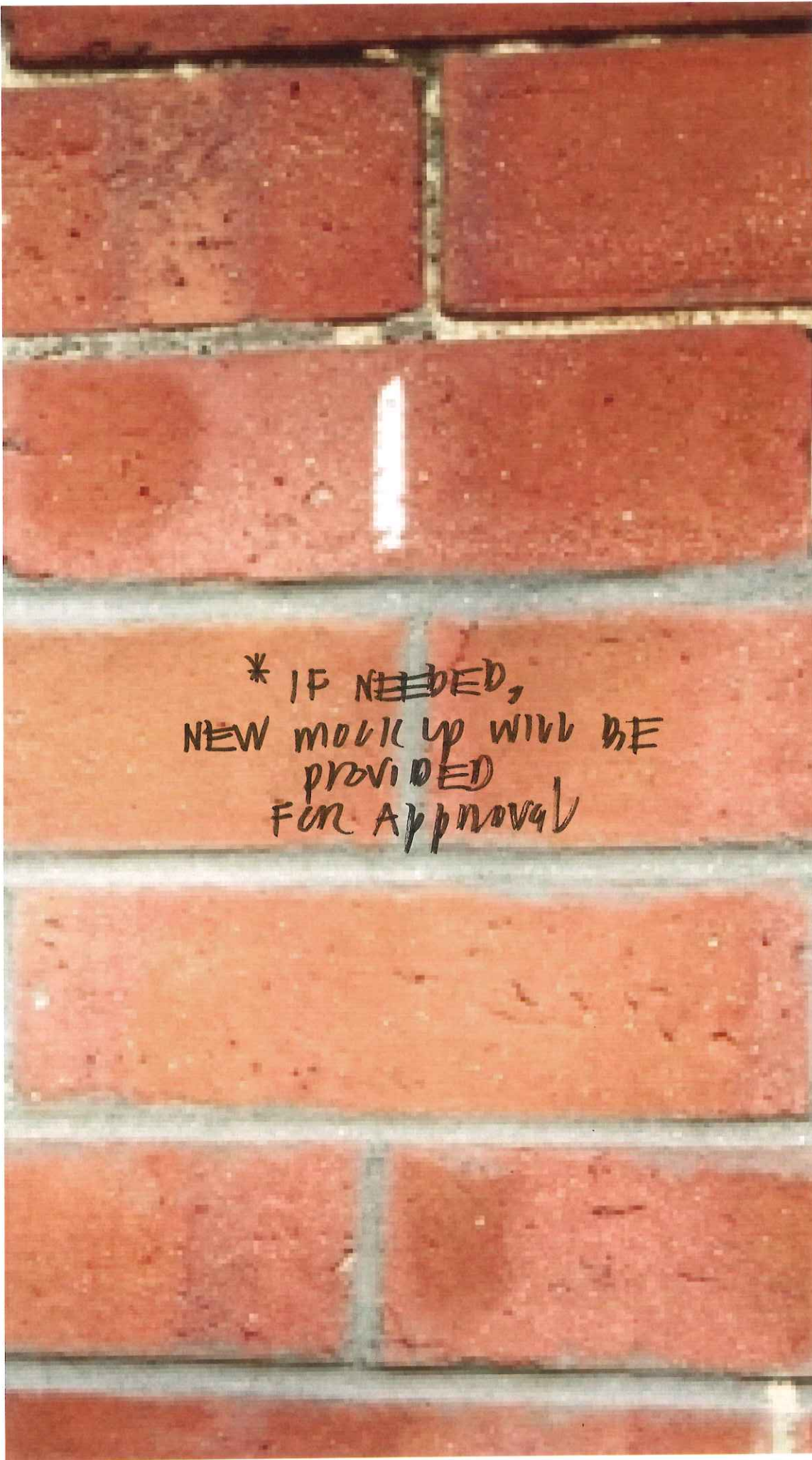
SITEMAP

- Home
- Our Products
- Our Story
- Finish & Glass
- Find a Dealer
- Contact

COPYRIGHT © 2017 NORTHEAST LANTERN LTD. ALL RIGHTS RESERVED.

Site created by Be Better Studios

89 BEACON STREET
MORTARWORK 5/10/17



* IF NEEDED,
NEW MORTAR WILL BE
PROVIDED
FOR APPROVAL

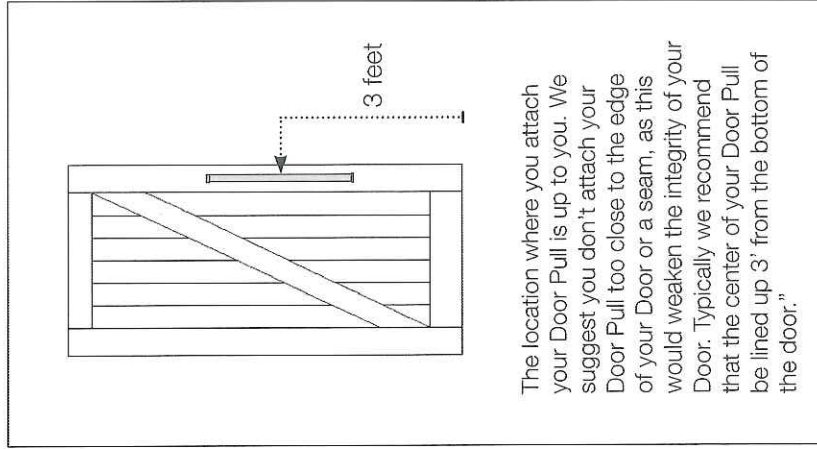
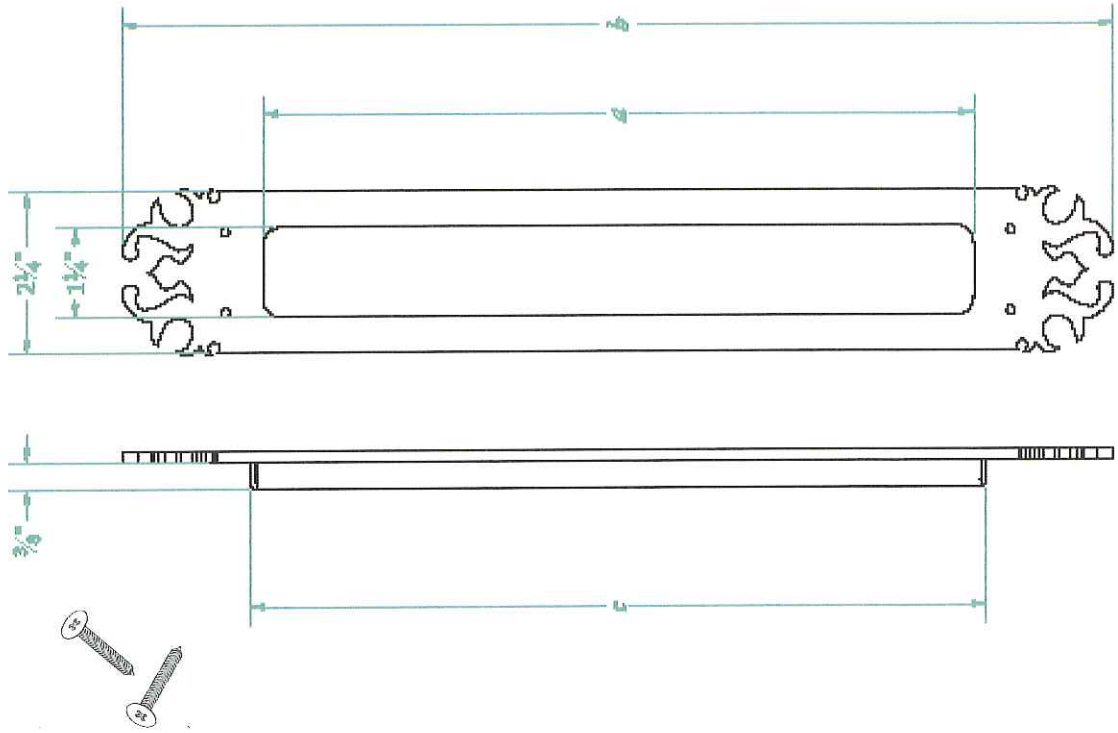
4.24.17

BEAVER PLACE 4.24.17
NECESSED GATE PULL (2)

Vintage Flush Door Pull



Vintage Flush Door Pull



The location where you attach your Door Pull is up to you. We suggest you don't attach your Door Pull too close to the edge of your Door or a seam, as this would weaken the integrity of your Door. Typically we recommend that the center of your Door Pull be lined up 3' from the bottom of the door."

length	8	10	12	14	16	18	20	22	24	26	28	30
--------	---	----	----	----	----	----	----	----	----	----	----	----

Molded Steel Cap Rail

- [Request A Catalog](#)
- [Shipping](#)
- [Online Bill Pay](#)
- [Family Material Codes](#)
- [Help!](#)
- [Construction Grade Metal](#)
- [Careers](#)
- [Green](#)
- [King Story](#)
- [Koenig Eisen](#)
- [Privacy](#)



Item # 45-905-19

Molded Steel Cover Rail, 1 3/4" W, 19 Ft

In Stock

\$25.89

Each

BHAC 4

A molded steel cover or cap rail that will fit over 1/2" to 1" square, flat or channel rails. Sold in 19' lengths. This item ships via UPS. This cap rail has a low profile at 5/8" and is 1-3/4" side. Matches item 81-4429-F. Receive a quantity discount when you purchase 10 or more.

- [DWG File](#)
- [DXF File](#)

DWG File

YOU MIGHT ALSO BE INTERESTED IN THE FOLLOWING



Molded Handraill, 1-5/8", 20ft USA

45-905-20



Molded Steel Cover Rail, 1 3/4 " W,

8ft

45-905-8

[Request A Catalog](#)

[Shipping](#)

[Online Bill Pay](#)

[Family Material Codes](#)

[Help!](#)

[Construction Grade Metal](#)

[Careers](#)

[Green](#)

[King Story](#)


[Koenig Eisen](#)

[Privacy](#)



Item # 45-338-2

Cast Iron Shoe. 4" Base. Fits 2" Square.

 In Stock

\$4.28

Each

Cast Iron Shoe/Flange. Fits 2" Square and 4" Baseplate. 4-3/4" Sq W. 1-1/2" H. 1.94 lbs

YOU MIGHT ALSO BE INTERESTED IN THE FOLLOWING



Cast Iron Shoe. 1" Height, Fits 2" Square.

45-1-K2



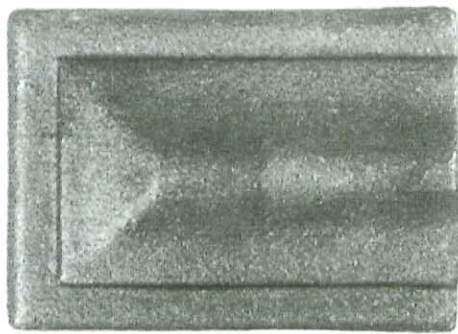
Steel Flange, Fits 2" (50mm) Square.

45-20-S

Ca

BHAC3

- [Request A Catalog](#)
- [Shipping](#)
- [Online Bill Pay](#)
- [Family Material Codes](#)
- [Help!](#)
- [Construction Grade Metal](#)
- [Careers](#)
- [Green](#)
- [King Story](#)
- [Koenig Eisen](#)
- [Privacy](#)



Item # 13-05302-405

Cast Steel Square End Piece. 1-3/4" Handrail

In Stock

\$1.47

Each

Cast Steel Terminal End Piece For 1-3/4" Width Molded Cover Rail. 2-3/8" Width x 2-3/8" Length.

DWG File	DXF File
--------------------------	--------------------------

DWG File

YOU MIGHT ALSO BE INTERESTED IN THE FOLLOWING



Cast Steel End Piece For 1-3/4 " W Handrail

13-05302-403



Cast Steel Corner Piece For 1- 3/4" Handrail

13-05302-407

3HAL 6

- [Request A Catalog](#)
- [Shipping](#)
- [Online Bill Pay](#)
- [Family Material Codes](#)
- [Help!](#)
- [Construction Grade Metal](#)
- [Careers](#)
- [Green](#)
- [King Story](#)
- [Koenig Eisen](#)
- [Privacy](#)



Item # 81-4429-B

Ductile Iron Pitched
Lambs Tongue 1-3/4"

 In Stock

\$4.10

Each

Malleable Iron Lambs Tongue for Pitched & Beveled 1-3/4" Width Molded Cover Rail. 4" Width x 5" Height.

- [DWG File](#)
- [DXF File](#)

DWG File

YOU MIGHT ALSO BE INTERESTED IN THE FOLLOWING



Cast Iron Pitched Lambs Tongue
1-5/8" W

45-6



Cast Iron Pitched Lambs Tongue
1-5/8" W

45-6-XL

BHAG J.

Forged Floral Handrail Bracket

FRONTSTOPWEAR and



- [Request A Catalog](#)
- [Shipping](#)
- [Online Bill Pay](#)
- [Family Material Codes](#)
- [Help!](#)
- [Construction Grade Metal](#)
- [Careers](#)
- [Green](#)
- [King Story](#)
- [Koenig Eisen](#)
- [Privacy](#)

Item # 13-04000-243

Forged Floral Hand Rail Bracket,
4-5/16" H

In Stock

\$12.15

Each

- [DWG File](#)
- [DXF File](#)

DWG File

YOU MIGHT ALSO BE INTERESTED IN THE FOLLOWING



Forged Steel Leaf Style Hnd Br
acket. 5-1/8"H

13-04000-242



Forged Steel Handrail bracket
8-1/16" H

13-04000-371

BHAC 8

BY BEALOW STREET
WALKING PIECES

- [Request A Catalog](#)
- [Shipping](#)
- [Online Bill Pay](#)
- [Family Material Codes](#)
- [Help!](#)
- [Construction Grade Metal](#)
- [Careers](#)
- [Green](#)
- [King Story](#)
- [Koenig Eisen](#)
- [Privacy](#)



Item # 13-04000-446

Forged Steel Gravity Gate Latch. 5-1/2"
Width, 4-1/8" Height

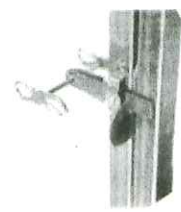
In Stock

\$17.30

Each

Hand Forged Fancy Gravity Gate Latch. 5-1/8" W. 4-1/8" H. .57 lbs.

YOU MIGHT ALSO BE INTERESTED IN THE FOLLOWING



3 Piece Forged Steel Gate Latch.
7-5/16" W, 4-5/16" Height.

13-04000-445

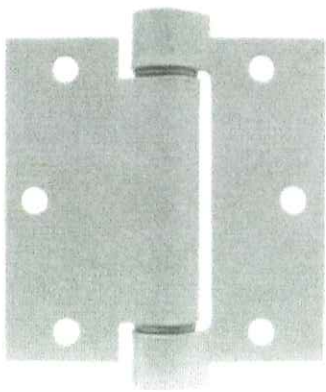


Forged Steel Barrel Bolt. 3-9/16"
Width, 2-3/8" Height.

13-08000-018

BHAC 2

- Request A Catalog
- Shipping
- Online Bill Pay
- Family Material Codes
- Help!
- Construction Grade Metal
- Careers
- Green
- King Story
- Koenig Eisen
- Privacy



Item # 31-4311

Spring Hinge. 3-1/2" x 3-1/2", 7 lbs

In Stock

\$16.98

Pair

Spring Hinge. 12 Gauge Steel, Singel Acting, Full Mortise Template, Non-Handed, Weldable, 1/4" Thick When Closed. 3-1/2" x 3-1/2",

YOU MIGHT ALSO BE INTERESTED IN THE FOLLOWING



Steel Butt Hinge. 3/8" Pin, 1- 5/8" Leaf

1-4040



Aluminum Butt Hinge. 4" x 4" S quare

1-4040-ALUM

BHAC 5