



33 Bowdoin Renovation Project

33 Bowdoin St, Boston, MA 02114

CENTREPOINT
ARCHITECTS



Project visibility from across Bowdoin Street

33 Bowdoin Renovation Project

33 Bowdoin St, Boston, MA 02114
CENTREPOINT
ARCHITECTS



Front Door



Front Door Detail



Front Door Detail



Historic photo showing basement openings
Historic New England Nathaniel Stebbins Collection (1847-1922)
Reference code PC047.02.6120.NN004



Basement Opening (Left) with Concrete Sill



Basement Opening (Right)



Wood Sill at Fifth Floor Side Window (505)



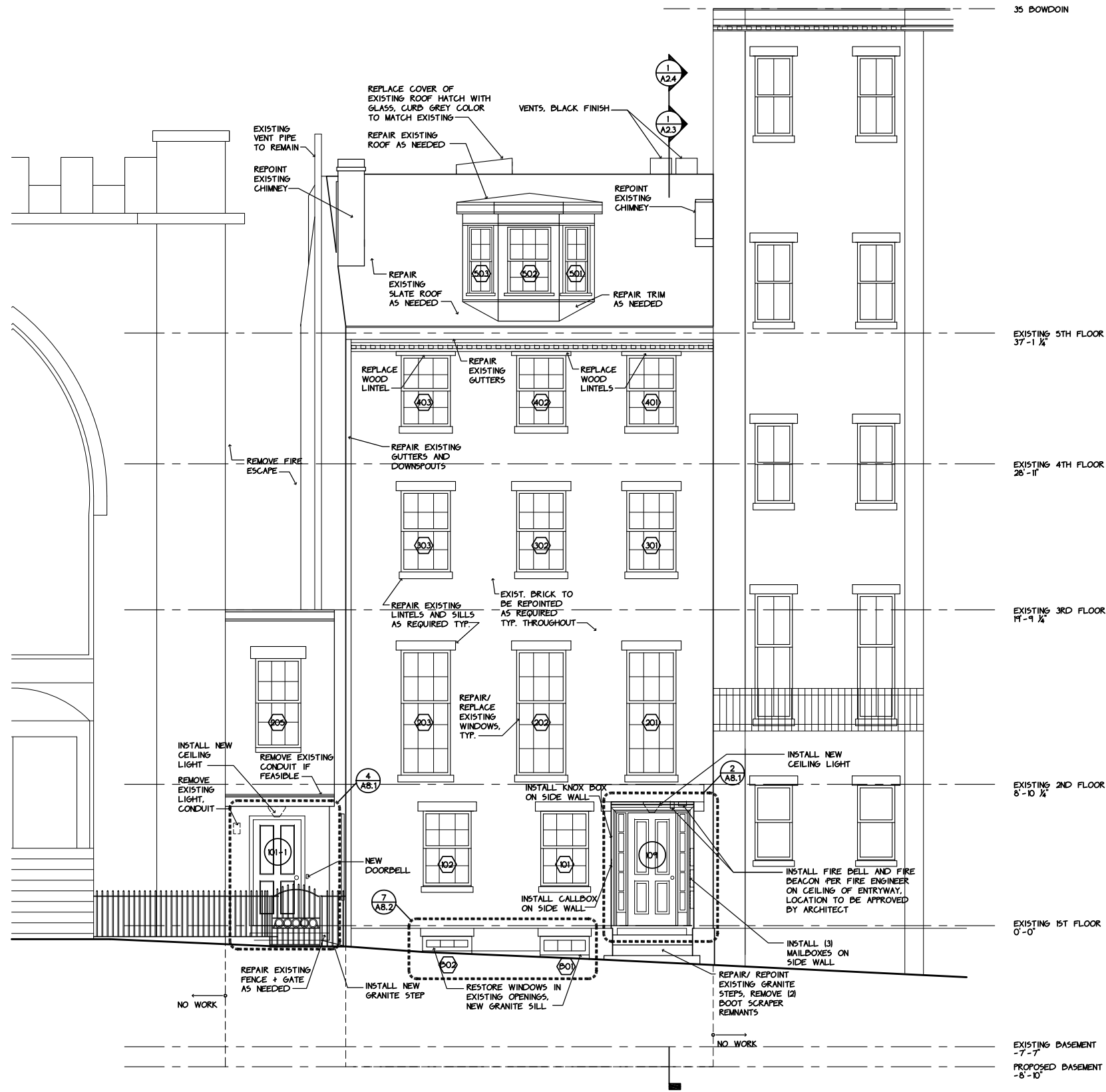
Wood Sill at Fifth Floor Side Window (505)



Wood Sill at Fifth Floor Side Window (504)



Wood Lintel at Fourth Floor Front Window



35 BOWDOIN

EXISTING 5TH FLOOR
37'-1 1/4"

EXISTING 4TH FLOOR
28'-11"

EXISTING 3RD FLOOR
14'-9 1/4"

EXISTING 2ND FLOOR
8'-10 1/4"

EXISTING 1ST FLOOR
0'-0"

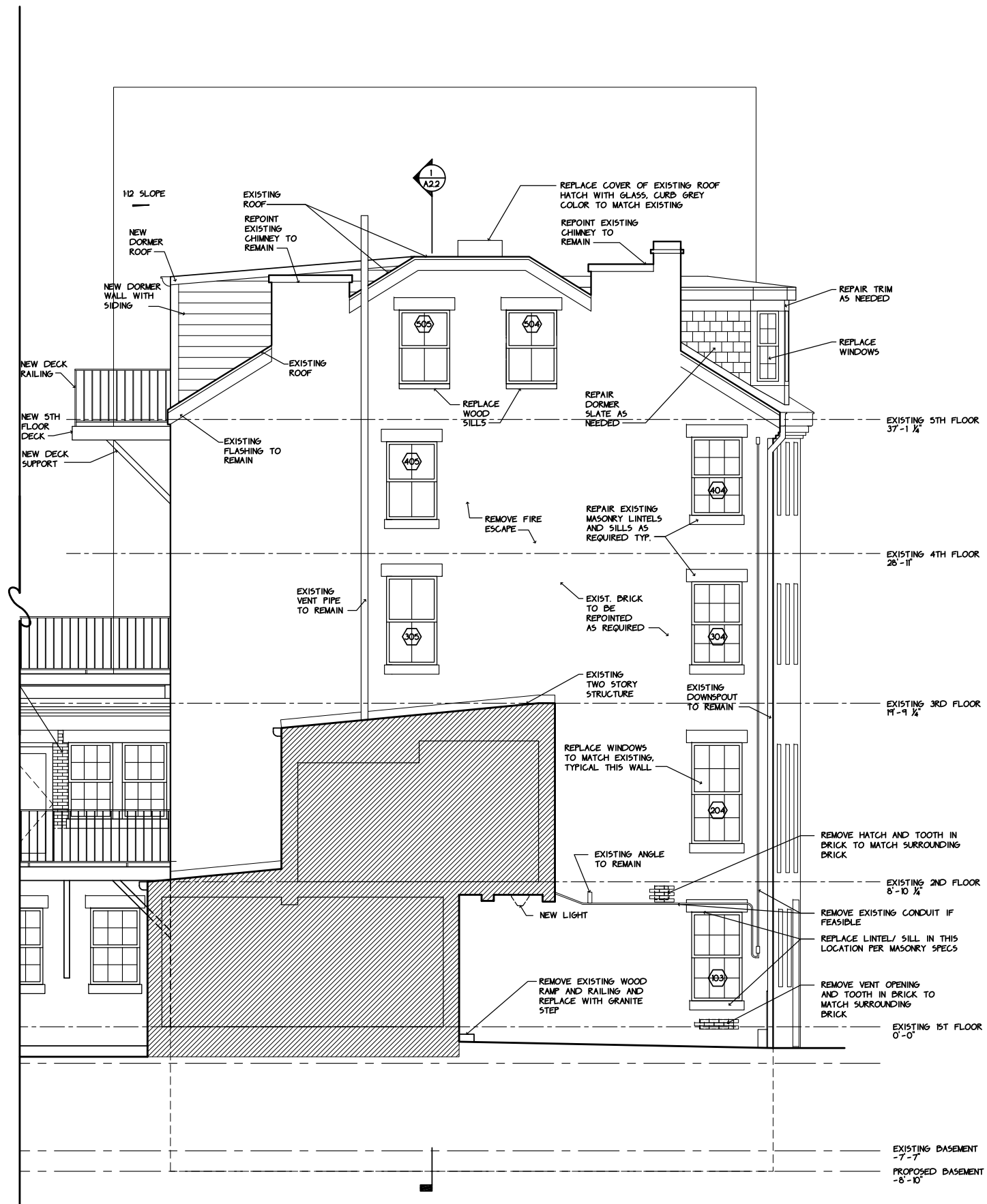
EXISTING BASEMENT
-7'-7"
PROPOSED BASEMENT
-8'-10"

NOTES:
PAINT SELECTION:
BROWNSTONE AND GRANITE LINTELS AND SILLS-
DO NOT PAINT
WOOD LINTELS AND SILLS-
BENJAMIN MOORE HC69 "WHITALL BROWN"
WINDOW FRAMES, SASHES AND BRICKMOLD-
BENJAMIN MOORE OC-17 "WHITE DOVE"
DOOR FRAMES-
BENJAMIN MOORE OC-17 "WHITE DOVE"
DOORS-
BENJAMIN MOORE HC-154 "HALE NAVY"
EXISTING FRONT DORMER TRIM AND WINDOWS-
MATCH EXISTING COLOR
NEW REAR DORMER SIDING-
BENJAMIN MOORE HC69 "WHITALL BROWN"

1 Front Elevation
Scale: 1/8" = 1'-0"

A2.0 Front Elevation

33 Bowdoin St, Boston, MA 02114

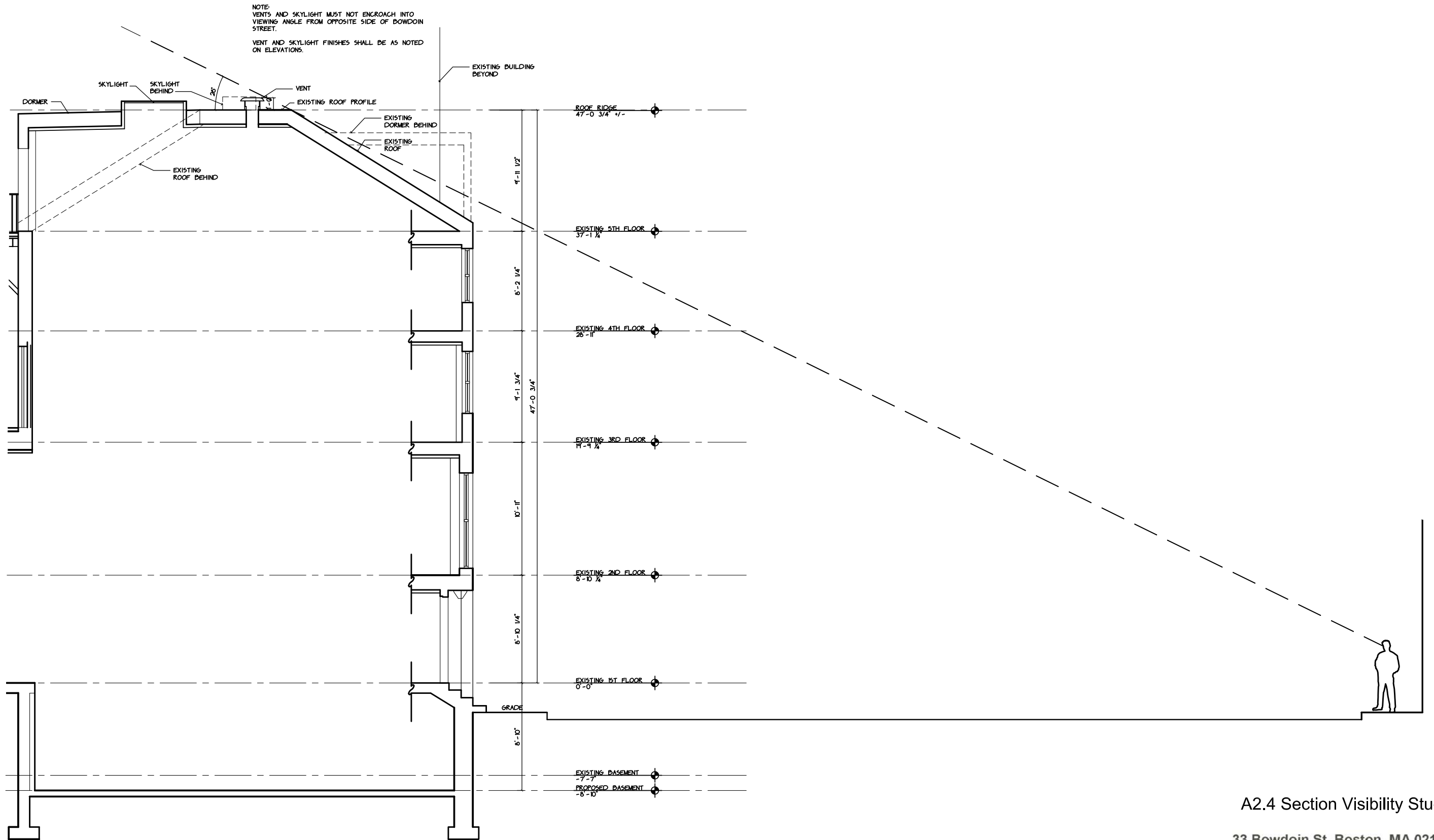


NOTE:
 FOR PAINT SELECTION, SEE NOTES ON PAGE
 A20

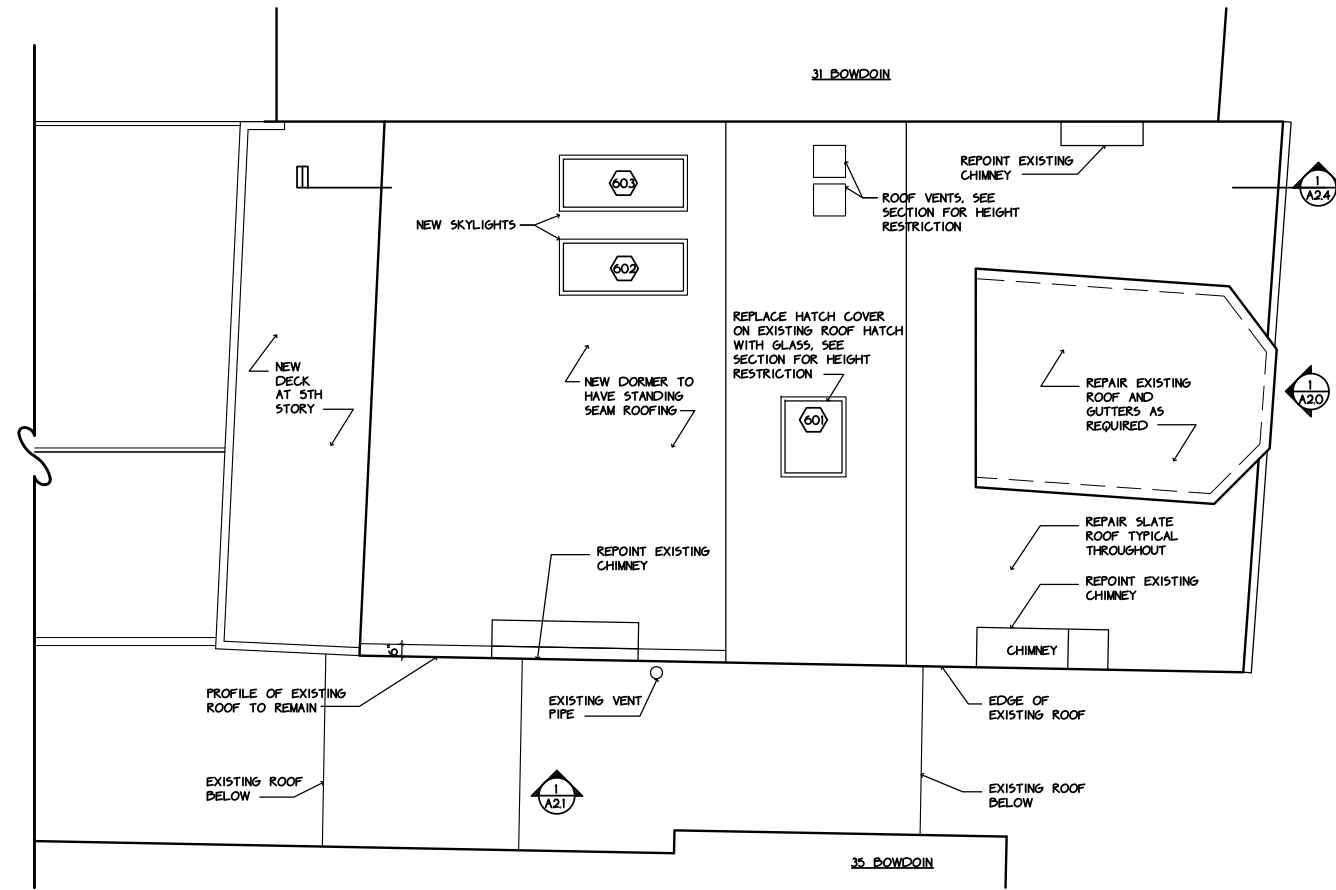
① Side Elevation
 Scale: 1/8" = 1'-0"

A2.1 Side Elevation

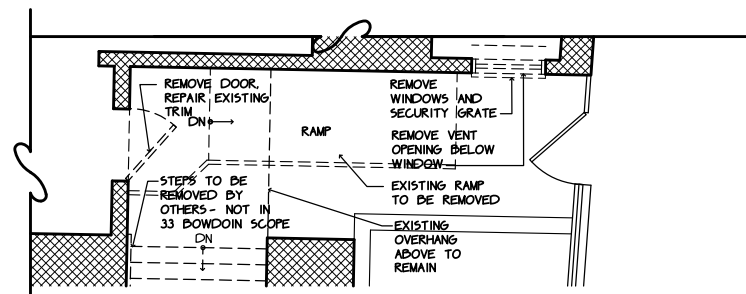
33 Bowdoin St, Boston, MA 02114



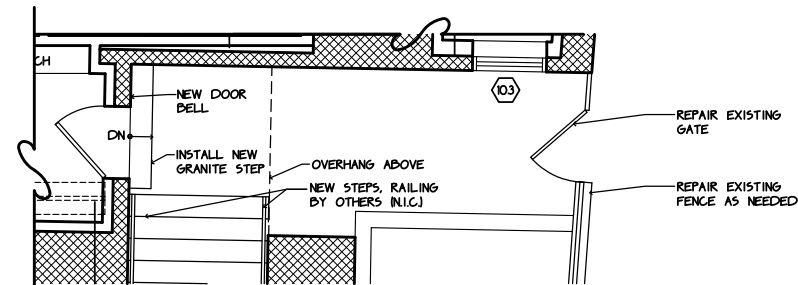
1 Section
Scale: 1/8" = 1'-0"



1 Roof Plan
Scale: 1/8" = 1'-0"

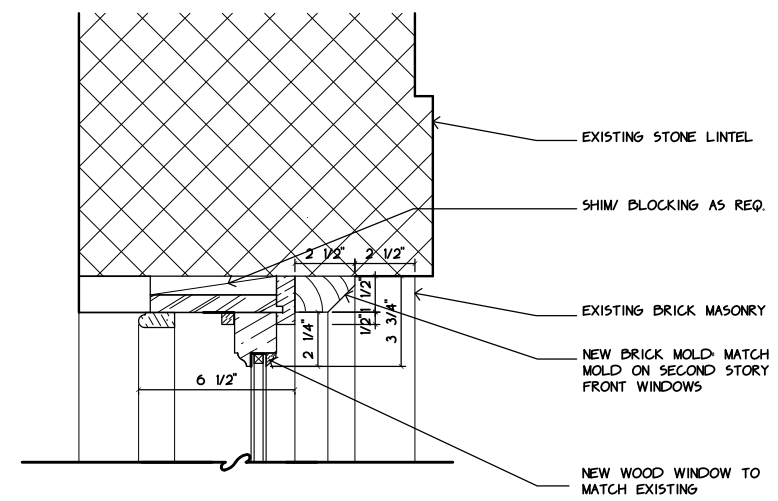
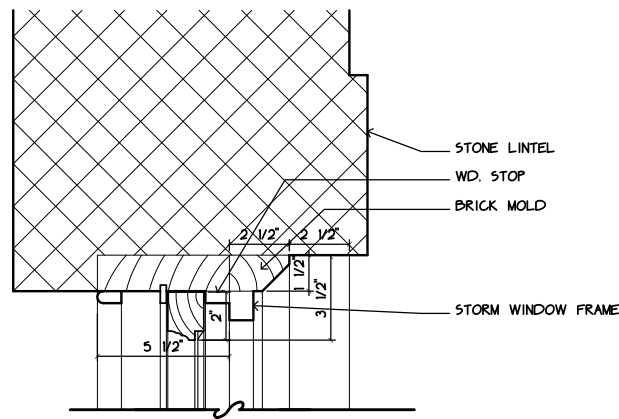


2 Partial First Floor Demolition Plan
Scale: 1/8" = 1'-0"



3 Partial First Floor Proposed Plan
Scale: 1/8" = 1'-0"

WINDOW SCHEDULE								
WINDOW NO.	TYPE	MFR.	ROUGH OPENING	MUNTIN CONFIG.	HEAD	SILL	JAMB	REMARKS
BASEMENT								
B01	F	CUSTOM	3'-1" X 14" VIF	SEE ELEVATIONS	1/A8.2	1/A8.2	1/A8.2 SIM.	ALUMINUM CLAD IN EXISTING OPENING. NEW GRANITE SILL
B02	F	CUSTOM	3'-1" X 11" VIF	SEE ELEVATIONS	1/A8.2	1/A8.2	1/A8.2 SIM.	ALUMINUM CLAD IN EXISTING OPENING. NEW GRANITE SILL
FIRST STORY								
101	A	CUSTOM	3'-0" X 5'-1" VIF	SEE ELEVATIONS	9/A8.0	10/A8.0	12/A8.0	CUSTOM WOOD REPLACE EXISTING UNDIVIDED WINDOWS
102	A	CUSTOM	3'-0" X 5'-1" VIF	SEE ELEVATIONS	9/A8.0	10/A8.0	12/A8.0	CUSTOM WOOD REPLACE EXISTING UNDIVIDED WINDOWS
103	A	CUSTOM	3'-1" X 5'-0" VIF	SEE ELEVATIONS	9/A8.0	10/A8.0	12/A8.0	CUSTOM WOOD TO MATCH ORIGINAL WINDOWS
SECOND STORY								
201	B	CUSTOM	3'-4" X 8'-2" VIF	SEE ELEVATIONS	9/A8.0	10/A8.0	12/A8.0	CUSTOM WOOD TO MATCH ORIGINAL WINDOWS
202	B	CUSTOM	3'-4" X 8'-2" VIF	SEE ELEVATIONS	9/A8.0	10/A8.0	12/A8.0	CUSTOM WOOD TO MATCH ORIGINAL WINDOWS
203	B	CUSTOM	3'-4" X 8'-2" VIF	SEE ELEVATIONS	9/A8.0	10/A8.0	12/A8.0	CUSTOM WOOD TO MATCH ORIGINAL WINDOWS
204	A	CUSTOM	3'-3" X 8'-6" VIF	SEE ELEVATIONS	9/A8.0	10/A8.0	12/A8.0	CUSTOM WOOD TO MATCH ORIGINAL WINDOWS
205	A	CUSTOM	2'-10" X 5'-1" VIF	SEE ELEVATIONS	9/A8.0	10/A8.0	12/A8.0	CUSTOM WOOD TO MATCH ORIGINAL WINDOWS
THIRD STORY								
301	A	CUSTOM	3'-4" X 5'-5" VIF	SEE ELEVATIONS	9/A8.0	10/A8.0	12/A8.0	CUSTOM WOOD TO MATCH ORIGINAL WINDOWS
302	A	CUSTOM	3'-4" X 5'-5" VIF	SEE ELEVATIONS	9/A8.0	10/A8.0	12/A8.0	CUSTOM WOOD TO MATCH ORIGINAL WINDOWS
303	A	CUSTOM	3'-4" X 5'-5" VIF	SEE ELEVATIONS	9/A8.0	10/A8.0	12/A8.0	CUSTOM WOOD TO MATCH ORIGINAL WINDOWS
304	A	CUSTOM	3'-3" X 5'-5" VIF	SEE ELEVATIONS	9/A8.0	10/A8.0	12/A8.0	CUSTOM WOOD TO MATCH ORIGINAL WINDOWS
305	A	CUSTOM	3'-3" X 5'-5" VIF	SEE ELEVATIONS	9/A8.0	10/A8.0	12/A8.0	CUSTOM WOOD TO MATCH ORIGINAL WINDOWS
FOURTH STORY								
401	A	CUSTOM	3'-4" X 4'-10" VIF	SEE ELEVATIONS	2/A8.2	10/A8.0	12/A8.0	CUSTOM WOOD TO MATCH ORIGINAL WINDOWS
402	A	CUSTOM	3'-4" X 4'-10" VIF	SEE ELEVATIONS	2/A8.2	10/A8.0	12/A8.0	CUSTOM WOOD TO MATCH ORIGINAL WINDOWS
403	A	CUSTOM	3'-4" X 4'-10" VIF	SEE ELEVATIONS	2/A8.2	10/A8.0	12/A8.0	CUSTOM WOOD TO MATCH ORIGINAL WINDOWS
404	A	CUSTOM	3'-3" X 4'-10" VIF	SEE ELEVATIONS	9/A8.0	10/A8.0	12/A8.0	CUSTOM WOOD TO MATCH ORIGINAL WINDOWS
405	C	CUSTOM	3'-1" X 4'-9" VIF	SEE ELEVATIONS	9/A8.0	10/A8.0	12/A8.0	CUSTOM WOOD TO MATCH ORIGINAL WINDOWS
FIFTH STORY								
501	D	CUSTOM	1'-11" X 4'-5" VIF	SEE ELEVATIONS	4/A8.2	4/A8.2	5/A8.2	CUSTOM WOOD, EXISTING WINDOWS NOT HISTORIC
502	E	CUSTOM	2'-9" X 4'-5" VIF	SEE ELEVATIONS	4/A8.2	4/A8.2	5/A8.2	CUSTOM WOOD, EXISTING WINDOWS NOT HISTORIC
503	D	CUSTOM	1'-11" X 4'-5" VIF	SEE ELEVATIONS	4/A8.2	4/A8.2	5/A8.2	CUSTOM WOOD, EXISTING WINDOWS NOT HISTORIC
504	C	CUSTOM	3'-1" X 4'-11" VIF	SEE ELEVATIONS	9/A8.0	3/A8.2	12/A8.0	CUSTOM WOOD TO MATCH ORIGINAL WINDOWS
505	C	CUSTOM	3'-1" X 4'-11" VIF	SEE ELEVATIONS	9/A8.0	3/A8.2	12/A8.0	CUSTOM WOOD TO MATCH ORIGINAL WINDOWS

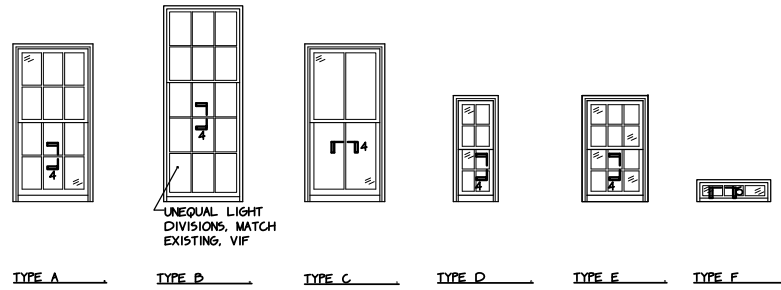


1 Window Schedule
N.T.S.

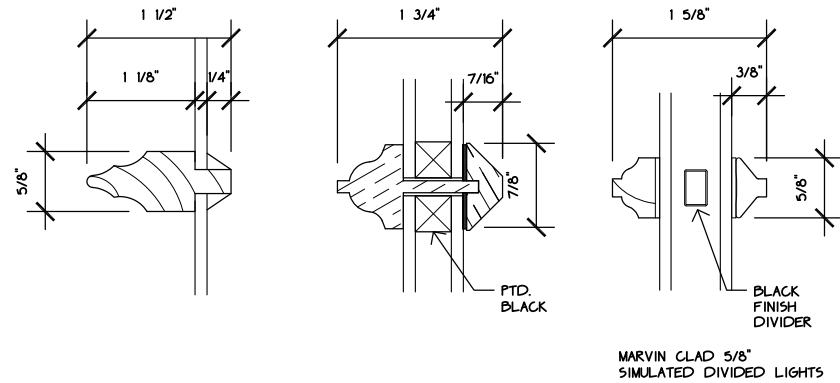
NOTES:

WINDOW DETAILS BASED ON JB SASH "PROPER BOSTONIAN" SERIES WITH CUSTOM DIMENSIONAL ADJUSTMENTS WITH THE EXCEPTION OF THE BASEMENT WINDOWS, WHICH ARE BASED ON MARVIN CLAD DIRECT GLAZE SERIES.

FOR PAINT SELECTION, SEE A20



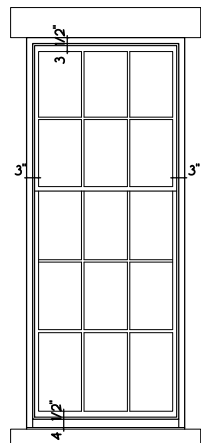
2 Window Types
N.T.S.



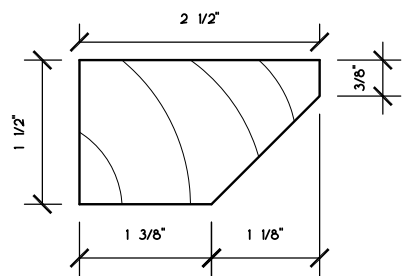
3 Existing Muntin
Scale: 6"=1'-0"

4 Proposed Muntin
Scale: 6"=1'-0"

5 Proposed Muntin-- Basement Only
Scale: 6"=1'-0"



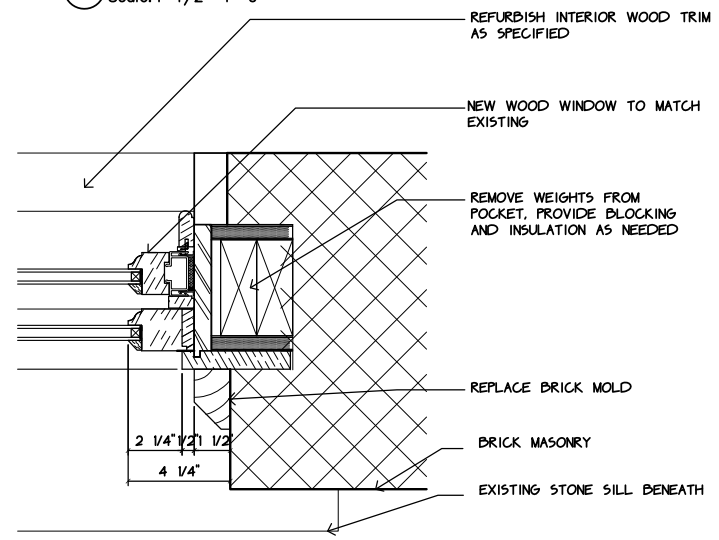
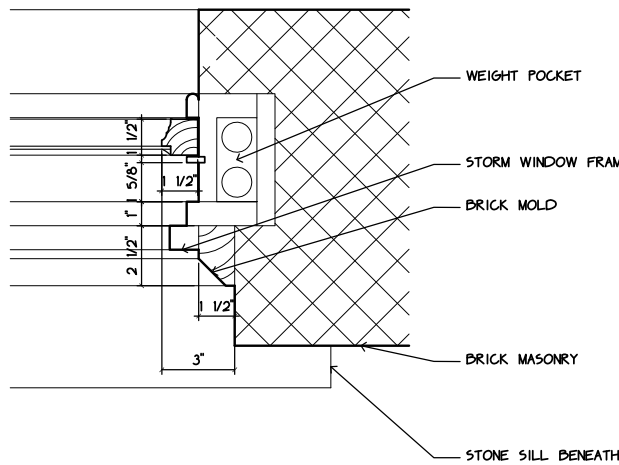
6 Existing Sightlines. Typ.
Scale: 1/4"=1'-0"



7 Existing Brick Mold (Proposed to Match)
Scale: 6"=1'-0"

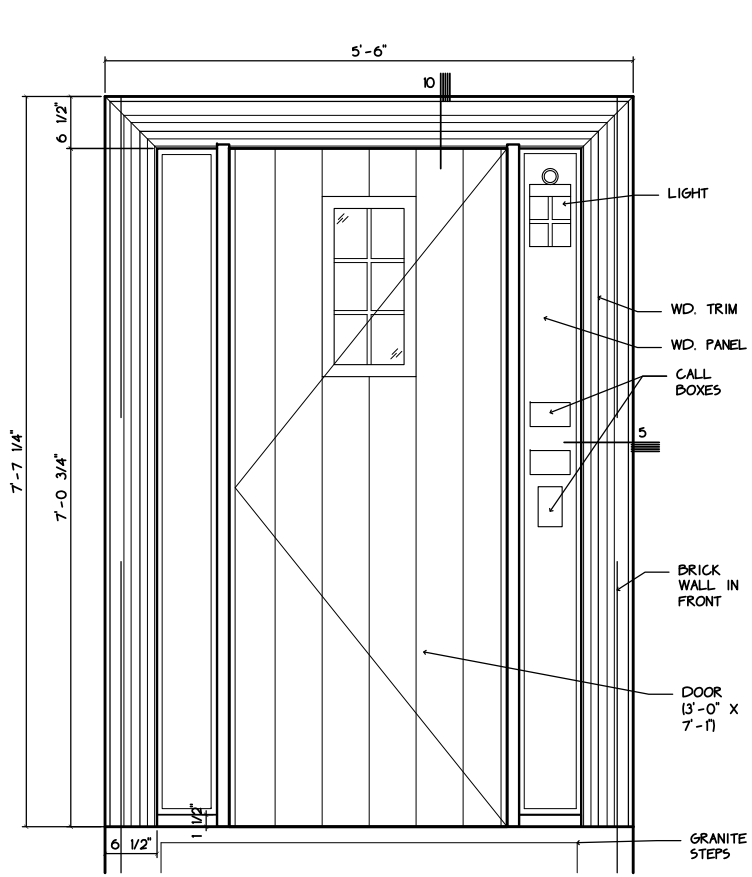
8 Existing Window Head & Sill in Masonry Wall. Typ.
Scale: 1-1/2"=1'-0"

10 Proposed Window Sill in Masonry Wall. Typ.
Scale: 1-1/2"=1'-0"

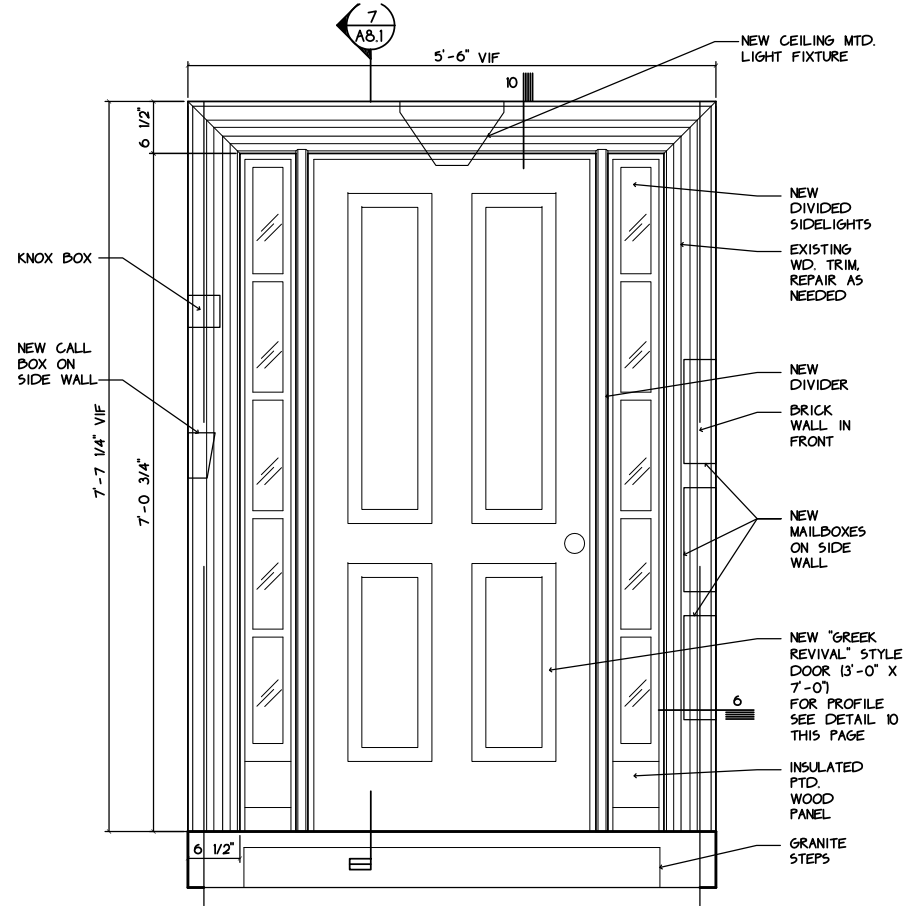


11 Existing Window Jamb in Masonry Wall. Typ.
Scale: 1-1/2"=1'-0"

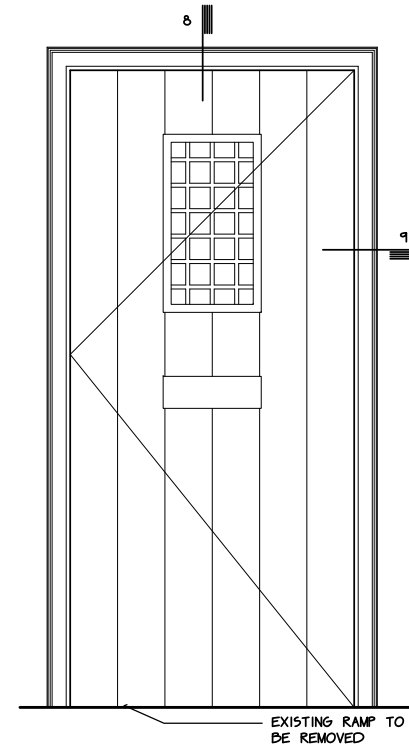
12 Proposed Window Jamb in Masonry Wall. Typ.
Scale: 1-1/2"=1'-0"



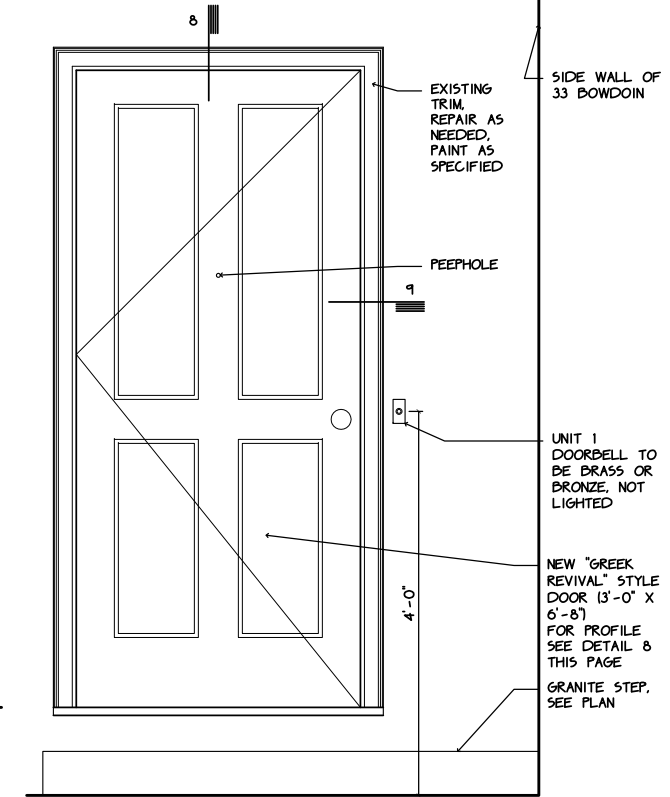
1 Existing Front Door
Scale: 1/2" = 1'-0"



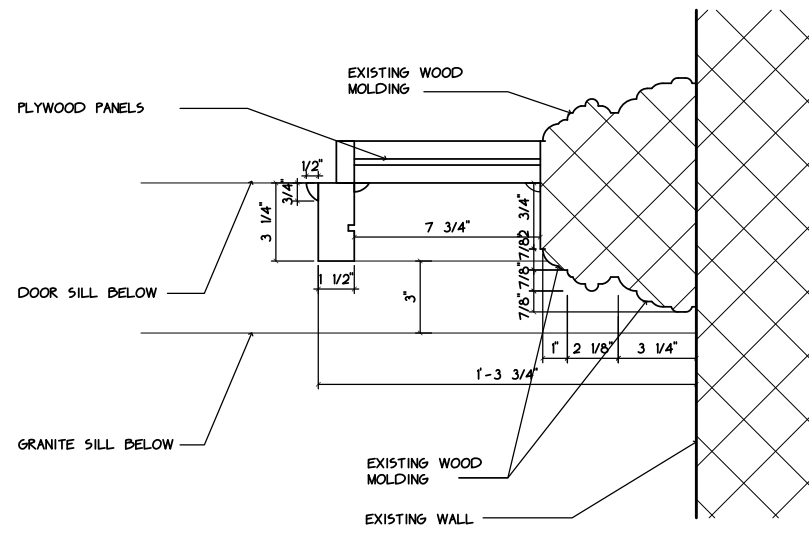
2 Proposed Front Door
Scale: 1/2" = 1'-0"



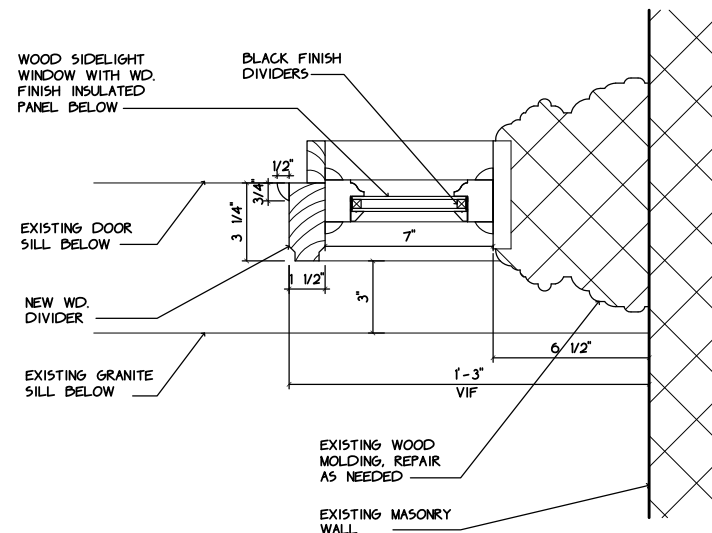
3 Existing Side Door
Scale: 1/2" = 1'-0"



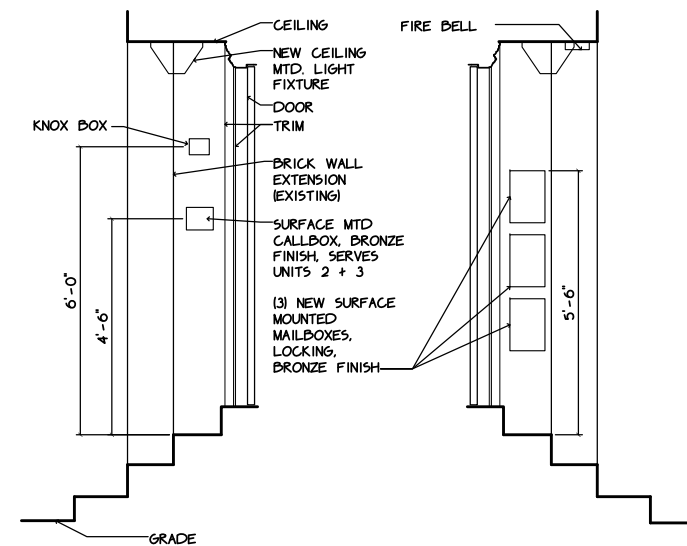
4 Proposed Side Door
Scale: 1/2" = 1'-0"



5 Existing Side Panel at Front Door
Scale: 1-1/2" = 1'-0"

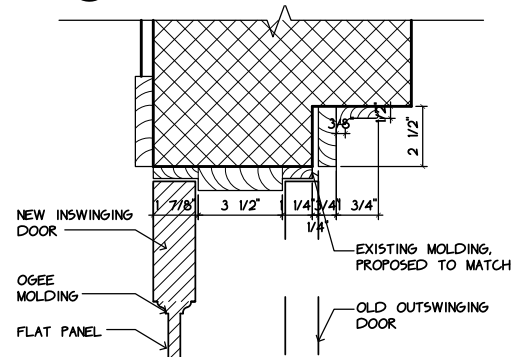


6 Proposed Sidelight at Front Door
Scale: 1-1/2" = 1'-0"

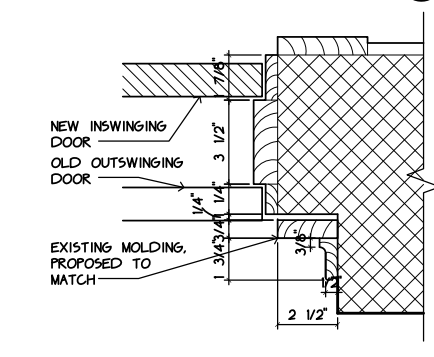


7 Left Side Elevation at Front Door
Scale: 1/4" = 1'-0"

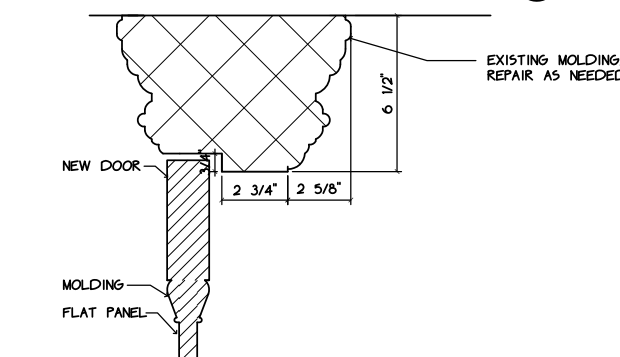
7a Right Side Elevation at Front Door
Scale: 1/4" = 1'-0"



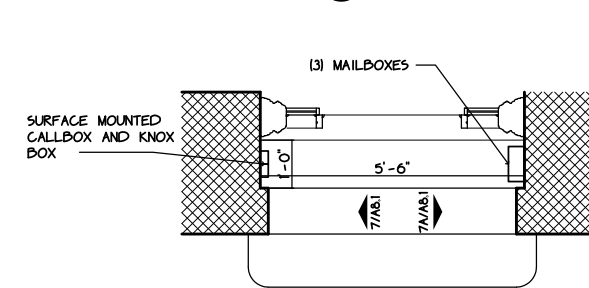
8 Side Door Head
Scale: 1-1/2" = 1'-0"



9 Side Door Jamb
Scale: 1-1/2" = 1'-0"



10 Front Door Head
Scale: 1-1/2" = 1'-0"

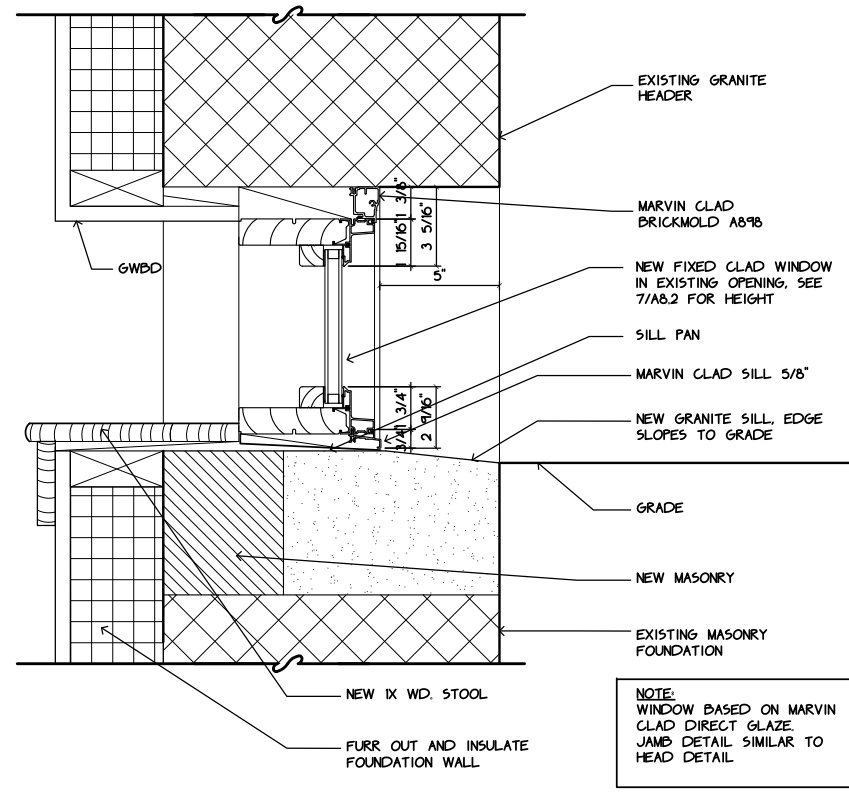


11 Proposed Front Door Plan
Scale: 1/4" = 1'-0"

NOTES:
FOR PAINT COLORS, SEE SHEET A20
NEW CALL BOXES/ BUZZERS TO BE BRASS OR BRONZE.

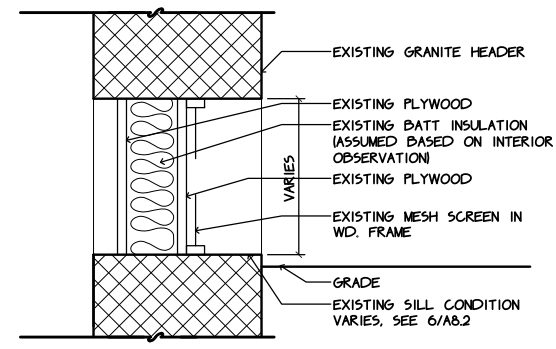
A8.1 Historic Door Details

33 Bowdoin St, Boston, MA 02114

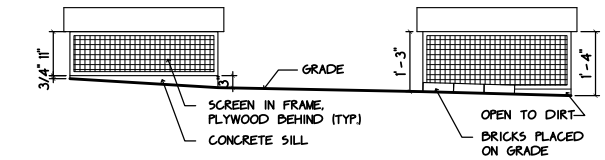


1 Proposed Head and Sill at Basement Window
Scale: 1-1/2"=1'-0"

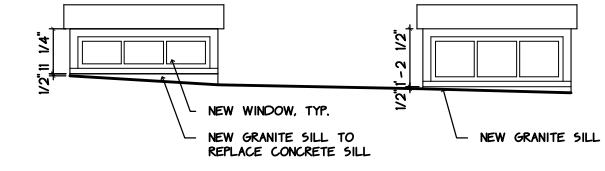
NOTE:
WINDOW BASED ON MARVIN
CLAD DIRECT GLAZE
JAMB DETAIL SIMILAR TO
HEAD DETAIL



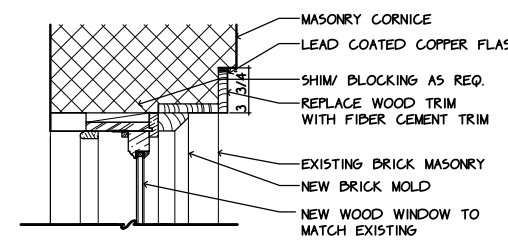
1A Existing Conditions at Basement Window
Scale: 3/4"=1'-0"



6 Existing Basement Opening Elevations
Scale: 1/2"=1'-0"

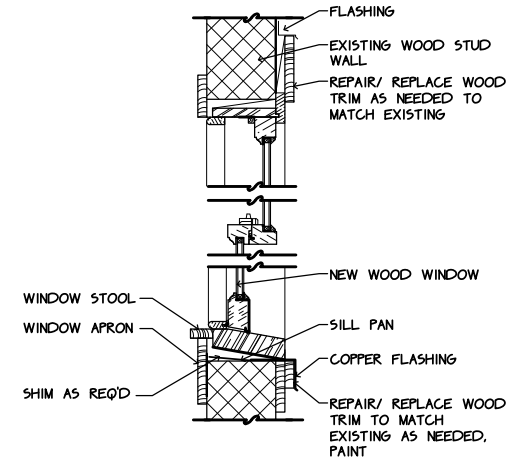


7 Proposed Basement Window Elevations
Scale: 1/4"=1'-0"



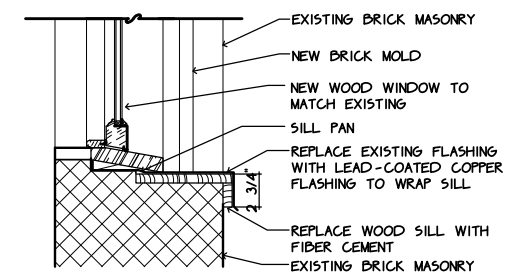
2 Proposed Wood Lintel, Fourth Story Front Windows
Scale: 3/4"=1'-0"

NOTE:
SEE 9/A&O FOR WINDOW PROFILE



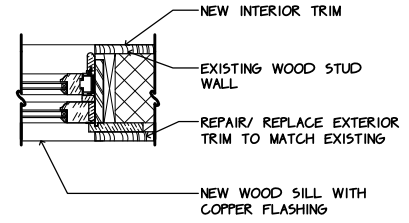
4 Proposed Window Head & Sill, Front Dormer at Fifth Story
Scale: 3/4"=1'-0"

NOTE:
SEE 9/A&O FOR WINDOW PROFILE



3 Proposed Wood Sill in Masonry Wall, Fifth Story Side Windows
Scale: 3/4"=1'-0"

NOTE:
SEE 10/A&O FOR WINDOW PROFILE



5 Proposed Window Jamb, Front Dormer at Fifth Story
Scale: 3/4"=1'-0"

NOTE:
SEE 10/A&O FOR WINDOW PROFILE

NOTES:
FOR PAINT SELECTION, SEE A20

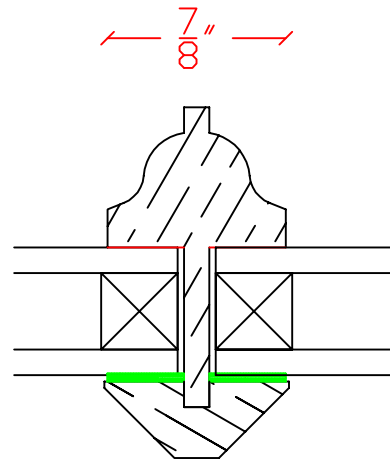
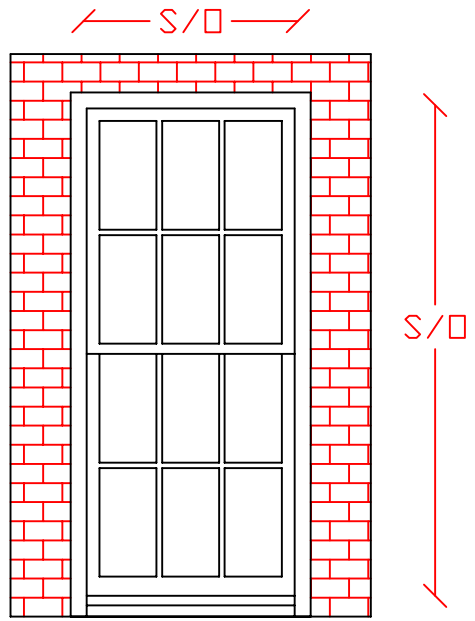
A8.2 Historic Windows

33 Bowdoin St, Boston, MA 02114

33 Bowdoin

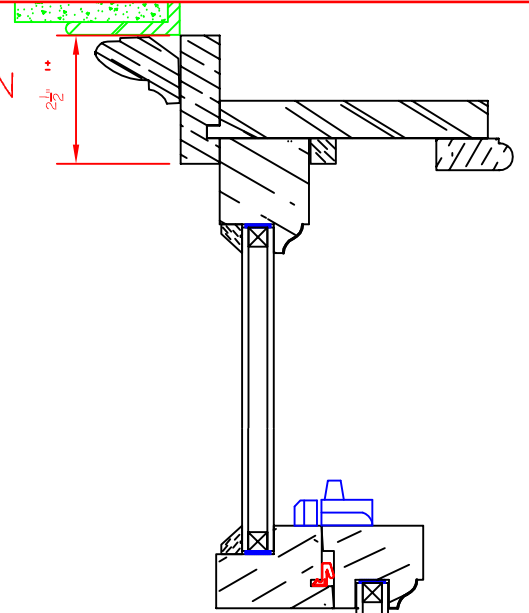
This window is the typical basis of design, however, see architectural details for dimensional adjustments to the standard profiles.

JB PROPER BOSTONIAN SH WINDOW UNIT

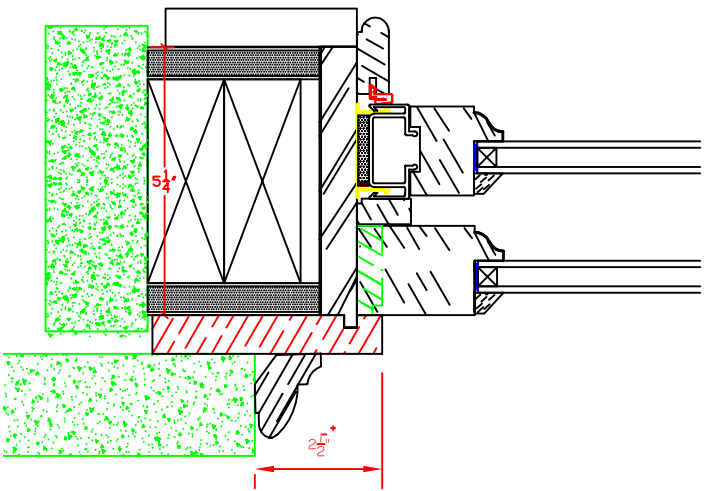
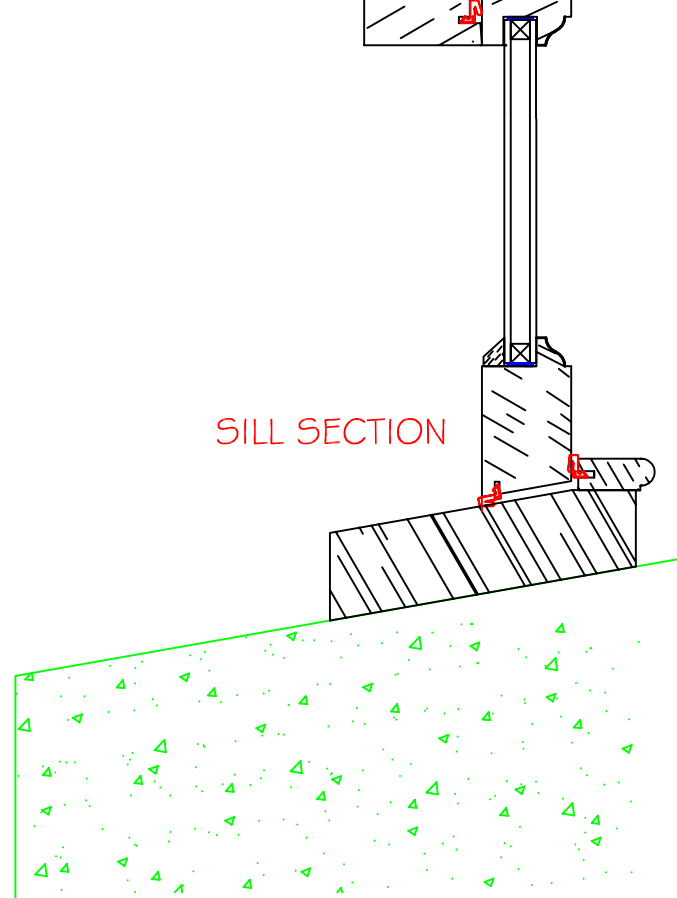


T.D.L. BAR
FULL SCALE

HEAD SECTION



SILL SECTION



SHE
OF 1

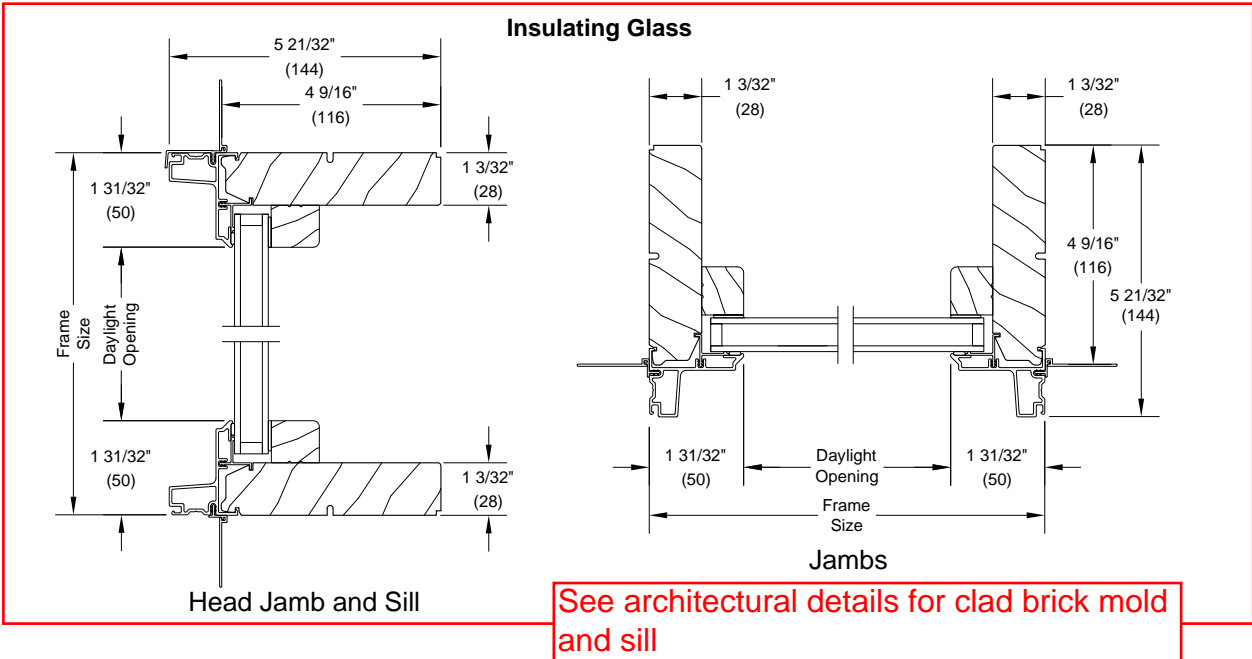
JBPB SH - 6/6

DEALER: JB SASH & DOOR CO., INC.
DATE: 03/19/15
NUMBER:
DRAWN: R.L.B.
CHECK:

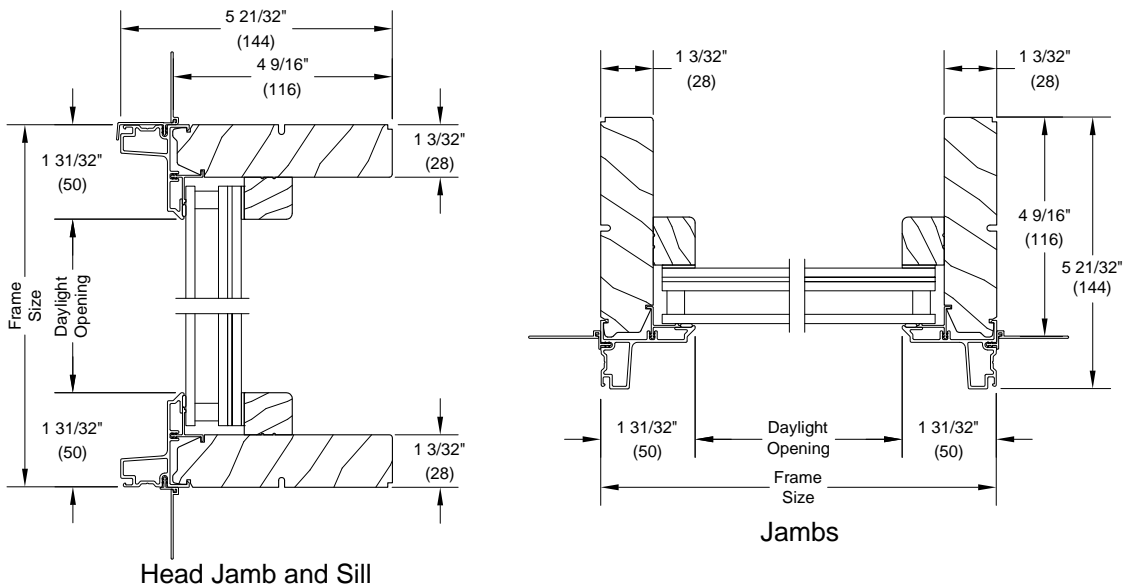
Clad Direct Glaze Polygon and Round Top

Section Details: Clad Direct Glaze Polygon - Standard and StormPlus IZ3/IZ4

Scale: 3' = 1' 0"



IZ3/IZ4 - Impact Glass



NOTE: CE mark is not available on Impact units

33 Bowdoin Street
Front Door

UPSTATE DOOR

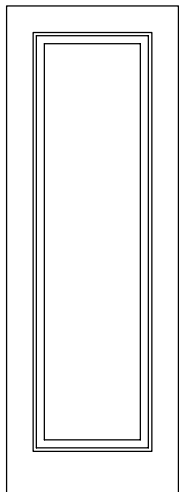
Distinctive Door Solutions

p 800.570.8283 ~ www.upstatedoor.com ~ sales@upstatedoor.com

Door Layout

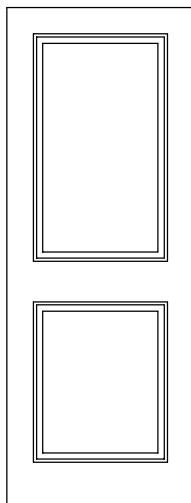
Exterior door: 5" stiles & top rail,
8" bottom rail (on flat)

Full Panel



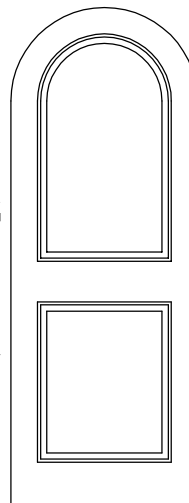
E-10

Bi-Panel



E-20

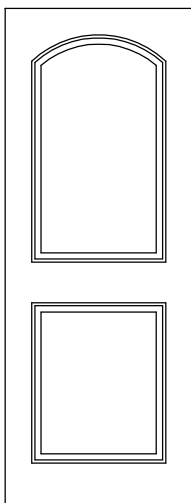
Bi-Panel
(Round top)



E-21

Bi-Panel

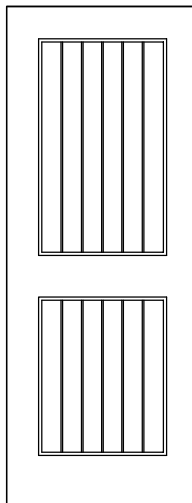
(Arch top panel only)



E-22

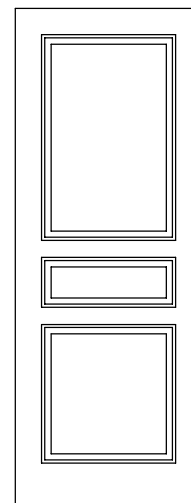
Bi-Panel

(v-grooved flat panels)



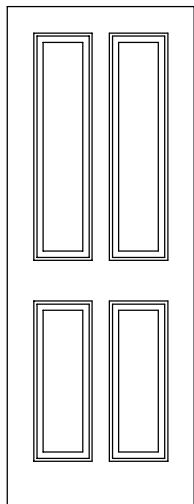
E-23

Tri-Panel



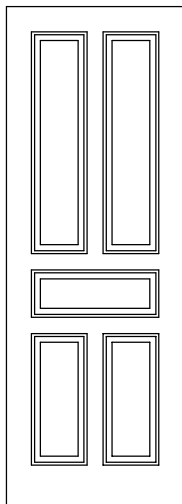
E-30

4 Panel



E-40

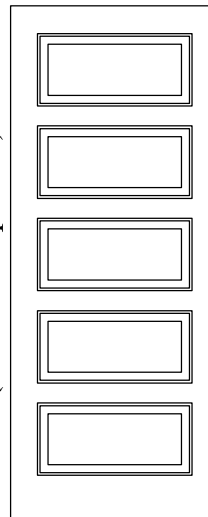
5 Panel



E-50

5 Panel

(horizontal panels)



E-51

Note: All doors available with raised or flat panels

EL-1

33 Bowdoin Street
Front Door Profile

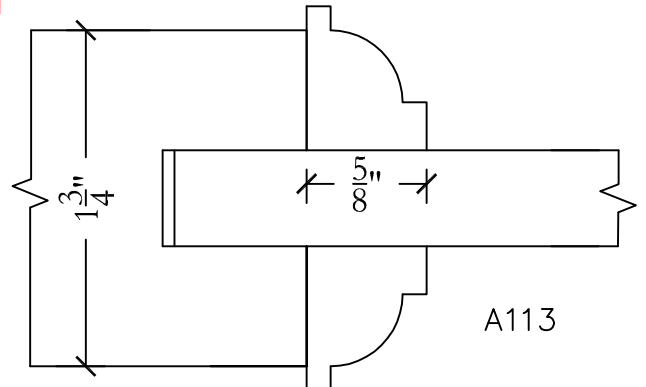
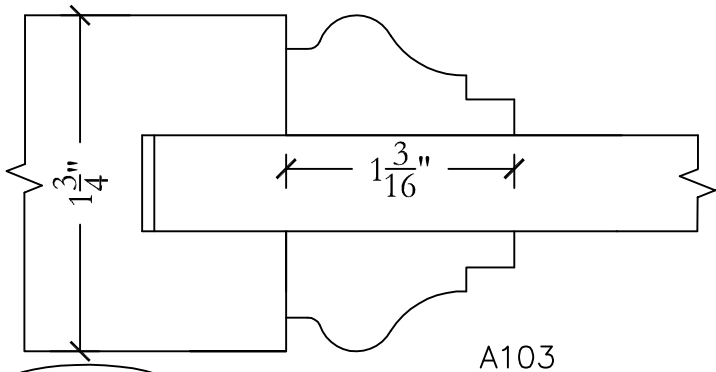
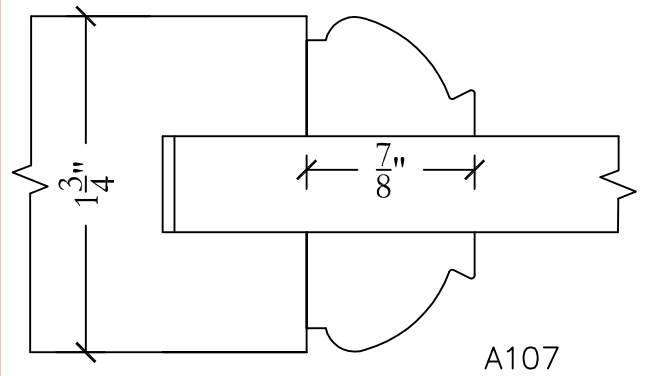
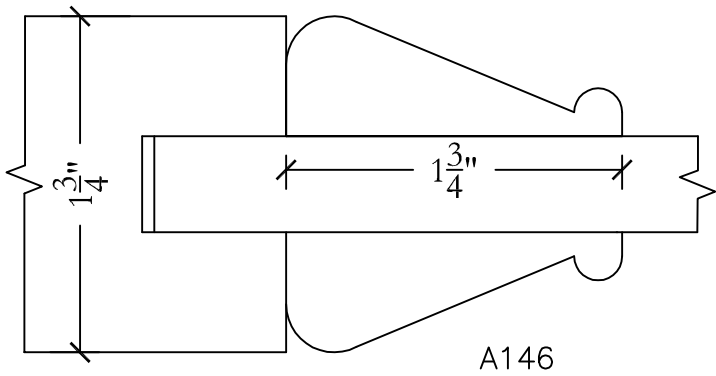
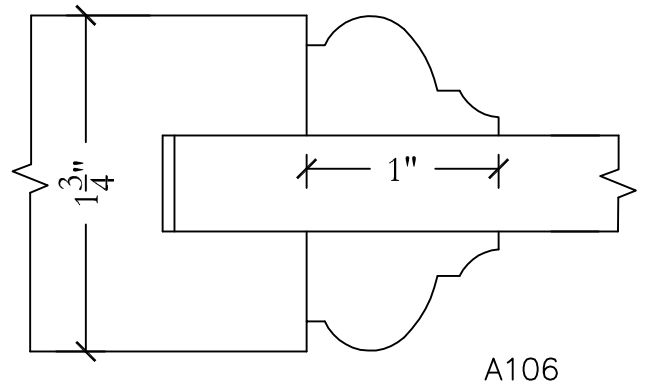
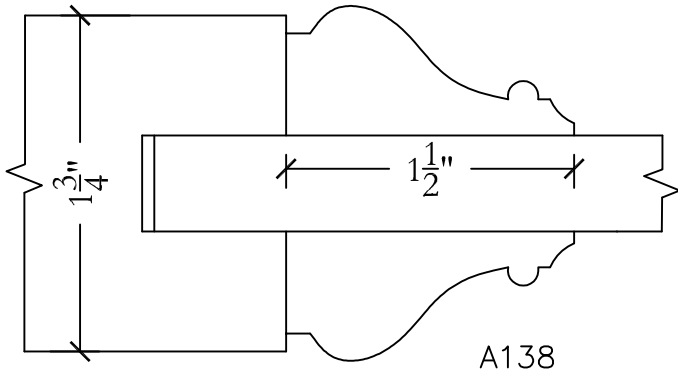
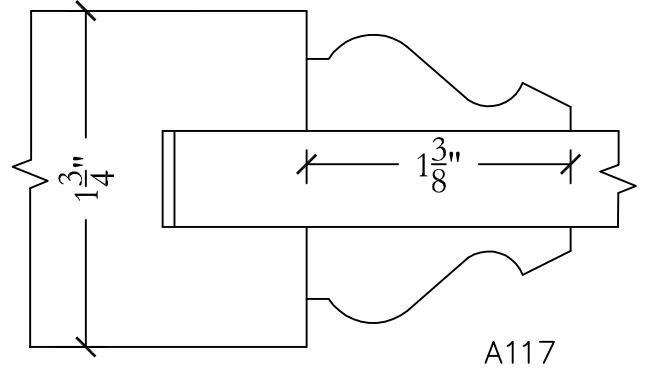
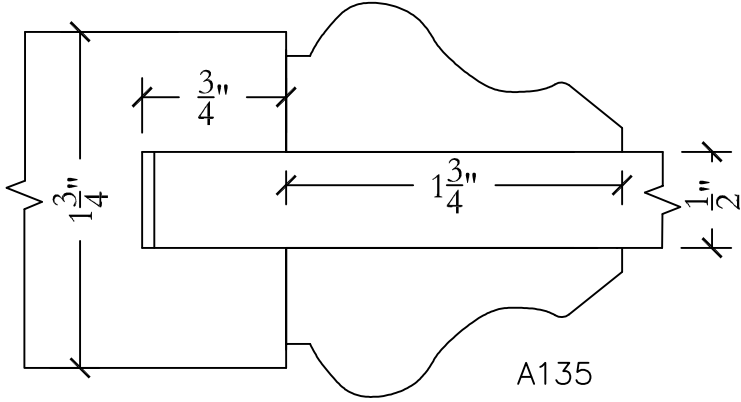
UPSTATE DOOR

Distinctive Door Solutions

p 800.570.8283 ~ www.upstatedoor.com ~ sales@upstatedoor.com

Profile Examples Flat Panel Applied Molding

Scale: Full



PE-1

UPSTATE DOOR

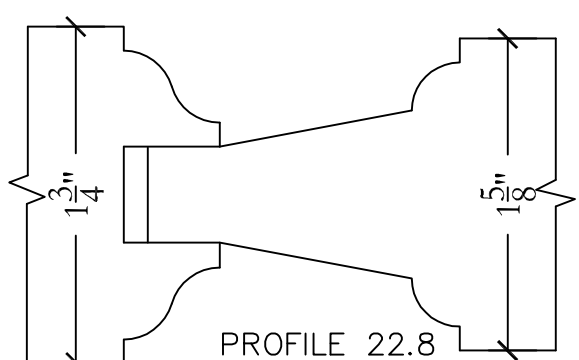
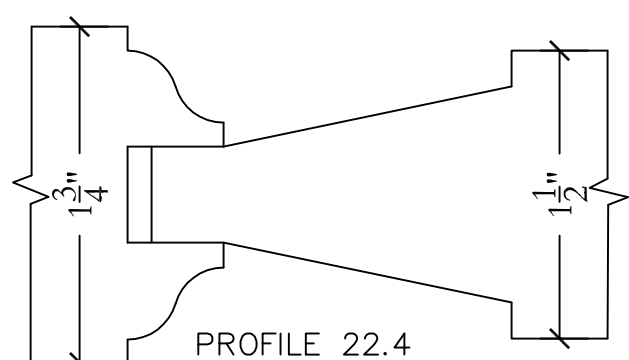
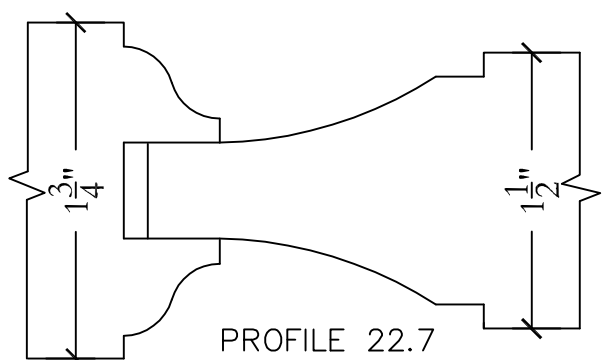
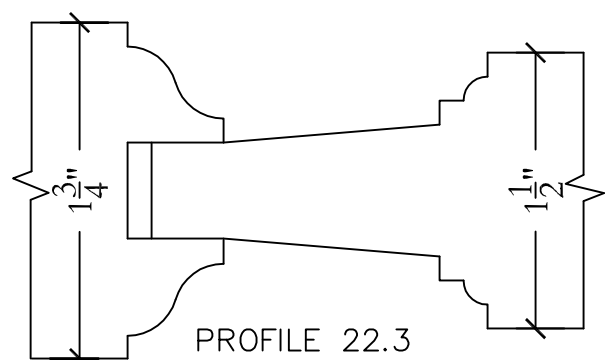
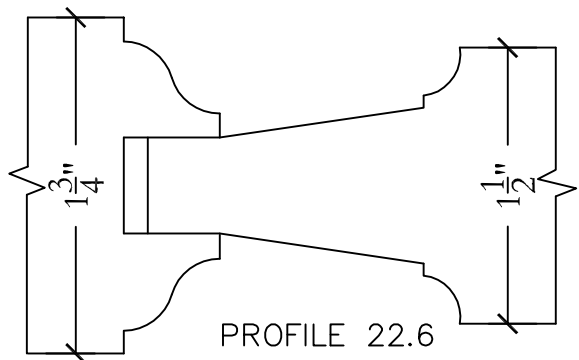
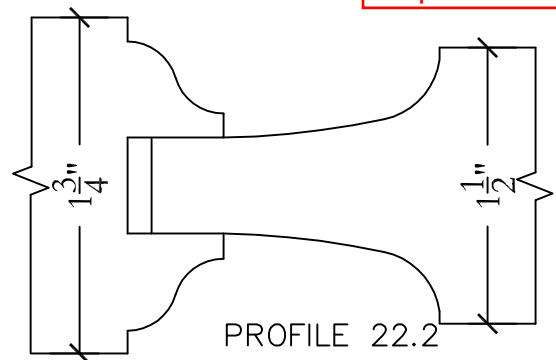
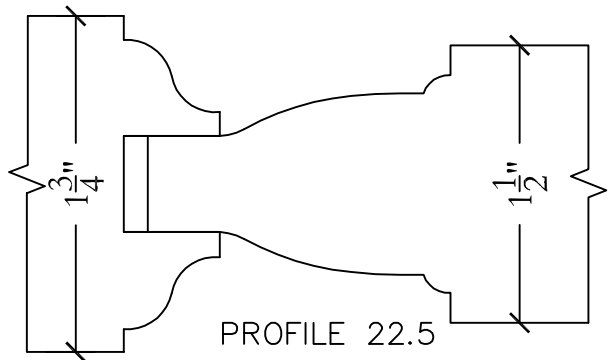
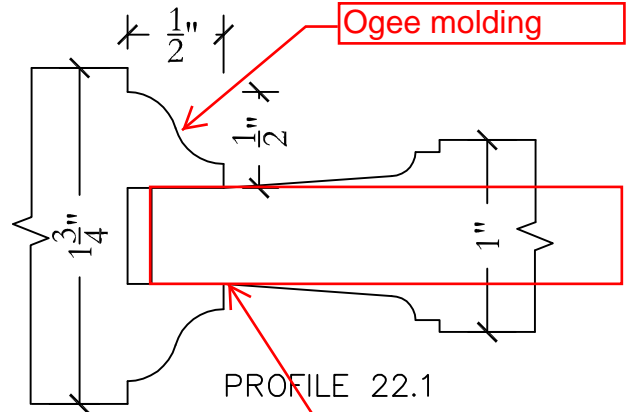
Distinctive Door Solutions

Profile 22

Cope: 1/2" x 1/2"
(all dimensions on flat)

p 800.570.8283 ~ www.upstatedoor.com ~ sales@upstatedoor.com

Scale: Full



33 Bowdoin Street
Surface Mount Mailboxes
Ecco E9 Bronze Finish

Home Mailboxes Numbers Fans Lamps Contact Order Form



E10 SATIN SS

E9 SATIN SS

E9 & E10 CONTEMPORARY STYLE

The E9 and E10 are commercial grade locking wall mailboxes made of 20 gauge 304 stainless steel with a smooth satin finish or galvanized steel with a polyester base epoxy paint.

The lock assembly features a built in recessed finger pull with a combination spring loaded latch and key lock allowing the door to be used with or without locking.

The incoming mail slot is protected from the elements by a self closing angled flap finished in a satin black paint or stainless steel. The front door opens downward to 80 degrees preventing contents from falling out.

E9: 8.5 W 13 H 4 D. Slot: 7 W 1.5 H.

Hardware and two keys included.

E10: 11.5 W 15 H 5 D. Slot: 10 W 1.5 H.

Hardware and two keys included.

[Specification Sheet](#)



E9 SATIN SS



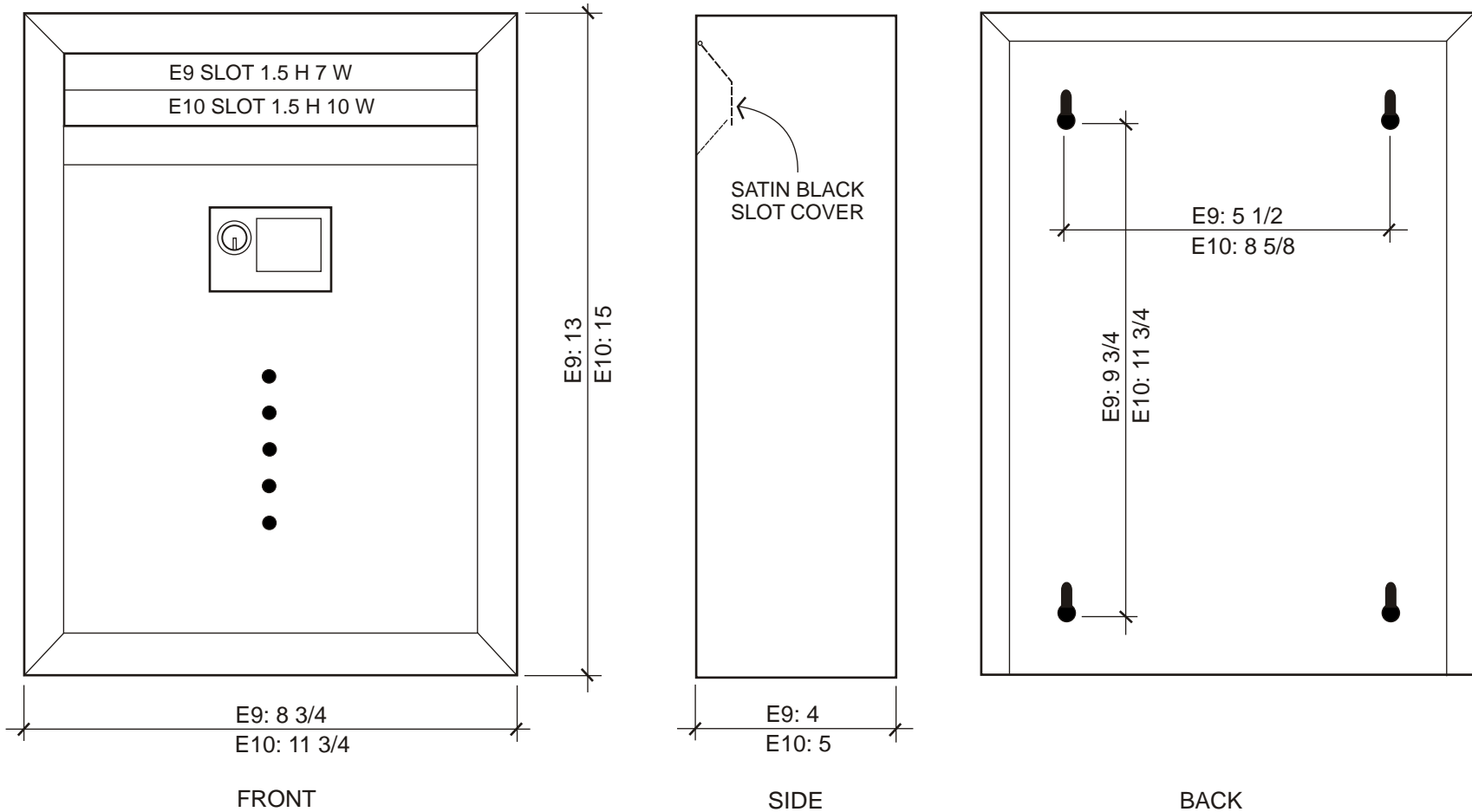
E9BZ BRONZE



33 Bowdoin Street
Surface Mount Mailboxes Ecco E9 Bronze Finish

MODEL	MATERIAL	OVERALL SIZE	INSTALLATION	FINISHES	HARDWARE
E9	304 SS	8 3/4" W 13" H 4"	Wall mounted	Satin stainless steel	Hardware and 2 keys included
E10	304 SS	11 3/4" W 15" H 5"	Wall mounted	Satin stainless steel	Hardware and 2 keys included

IMAGES NOT TO SCALE



Maintenance

Regular dusting and cleaning. Apply 3 in 1 oil into key way of lock a couple of times a year to prevent key from sticking.

Installation Instructions

- 1 Determine the location and height of where the mailbox is to be installed. With the door open, mark the location of screw holes. Install mailbox using screws.
- 2 Mailbox door can be used with or without locking. Hardware and two keys provided.

33 Bowdoin
Callbox at front door.

LED light only illuminates while call is in progress.

VIKING PRODUCT MANUAL

SECURITY & COMMUNICATION SOLUTIONS

K-1770-3 Series

Entry Phones with Keypads
and Proximity Card Readers

October 10, 2016

Vandal Resistant Entry Phones with Built-In Keypad and 125KHz Proximity Card Reader

The **K-1770-3 Series** entry phones provide a tough and attractive handsfree phone for commercial, apartment, and residential door entry or applications requiring a vandal resistant speaker phone with built-in 125 KHz Proximity Card Reader. The card reader outputs industry standard 26-bit Wiegand data, allowing it to be used with a **Viking ES-1** door controller or any controller compatible with 26-bit Wiegand format. The **K-1770-3 Series** entry phones are available in two attractive finishes: "brushed stainless steel" and "oil rubbed bronze".

When the "Call" button is pressed, the **K-1770-3** returns dial tone. The keypad may then be used to dial any number. If no Touch Tone is entered within 8 seconds, CPC is detected, a busy signal is detected, or the programmable maximum call time has elapsed, the **K-1770-3** will automatically disconnect. Alternatively, the **K-1770-3** may be disconnected by pressing the "Call" button again. The **K-1770-3** comes complete with a standard, flush mount, rough-in box. In addition, an optional **VE-6x7** weather resistant, surface mount box is available (see **DOD# 424**).



K-1770-3
"Brushed Stainless Steel"
(similar to brushed nickel)



K-1770-3-BN
"Oil Rubbed Bronze"
(satin dark brown powder paint
with fine copper metallic)

The **K-1770-3-EWP** shares all of the features of the **K-1770-3** in addition to Enhanced Weather Protection (EWP) for outdoor installations where the unit is exposed to precipitation or condensation. EWP products feature foam rubber gaskets and boots, sealed connections, gel-filled butt connectors, as well as urethane or thermal plastic potted circuit boards with internally sealed, field-adjustable trim pots and DIP switches for easy on-site programming. For more info, see **DOD# 859**.

Features

- Built-in 125KHz 26-bit Wiegand proximity card reader with LED, beep card read confirmation, and EWP board protection
- Compatible with the following Viking Proximity Cards and Fobs: **PRX-C, PRX-C-ISO** and **PRX-FOB (DOD# 198)**
- **Vandal Resistant Features:** 14 gauge louvered 316 stainless steel faceplate with permanent laser etched graphics, stainless steel "Call" button, heavy duty metal keypad and T-10 Torx security mounting screws, scratch resistant powder coating (**K-1770-3-BN**)
- **Weather Resistant Features:** Marine grade 316 stainless steel faceplate, screws and push button switch. Switch internally sealed per IP67. Mylar speaker. Self-draining mic mount. Faceplate, mic and speaker gaskets. Weather Resistant powder paint (**K-1770-3-BN**)
- **K-1770-3-EWP** is designed to meet IP66 Ingress Protection Rating (see **DOD# 859** for more information)
- Available in 2 standard faceplate finishes: 316 brushed stainless steel or oil rubbed bronze powder paint
- Blue "in use" LED
- Telephone line powered
- Volume adjustments for microphone and speaker
- Advanced call progress detection: disconnects on busy signal, return to dial tone, CPC, reorder tone, maximum call time out and 40 second silence time out
- Selectable auto-answer feature for monitoring
- Selectable push button disconnect
- Zinc plated steel rough-in box with (2) 3/4" conduit knockouts
- Optional **VE-6x7** Surface Mount Box available (**DOD 424**)
- Optional **VE-LIGHT** to illuminate the front panel at night (**DOD 428**)

Applications

- Apartment entry phone when used with the **K-1900-3** Apartment Entry Dialer or **C-4000** Apartment/Office Entry Controller or **C-3000** Apartment Entry Controller
- Use with a **Viking C-500** to control 1 or 2 (expandable to 8) (**DOD 177**) **K-1770**'s and door/gate control on a single phone line
- Use with a **Viking C-2000B** to control 1 to 4 **K-1770**'s and door/gate control on a single phone line (**DOD 156**)
- Courtesy and customer assistance phone
- Automated teller (ATM) phone
- Use with a **Viking ES-1** for proximity card reader door control
- Provide unique front and back door chimes and paging when use with a **Viking SLP-1** or **SLP-4** and **C-2000B**
- Kiosk phone with (100 number speed dialing) when used with the **K-1900-9** Multi-Number Dialer (**DOD 321**)
- Use with Viking's Proximity Cards: **PRX-C, PRX-C-ISO, PRX-FOB (DOD 198)**

Specifications

Entry Phone Power: Telephone line powered 20V DC/20mA minimum
Proximity Card Reader Power: 5 to 14V DC @ 60mA maximum
Dimensions: Overall: 140mm x 165mm x 66mm (5.5" x 6.5" x 2.6"),
Rough-in box: 114mm x 140mm x 64mm (4.5" x 5.5" x 2.5")
Shipping Weight: 1.6 kg (3.5 lbs)
Environmental: -29°C to 54°C (-20°F to 130°F)
Humidity - K-1770-3: 5% to 95% non-condensing
Humidity - K-1770-3-EWP: Up to 100% condensing
Speaker Volume: Approximately 70 db maximum @1m
Connections: Gel-filled tip and ring connectors
CPC Disconnect Time: 500ms minimum
REN #: 0.5 A

VIKING PRODUCT MANUAL

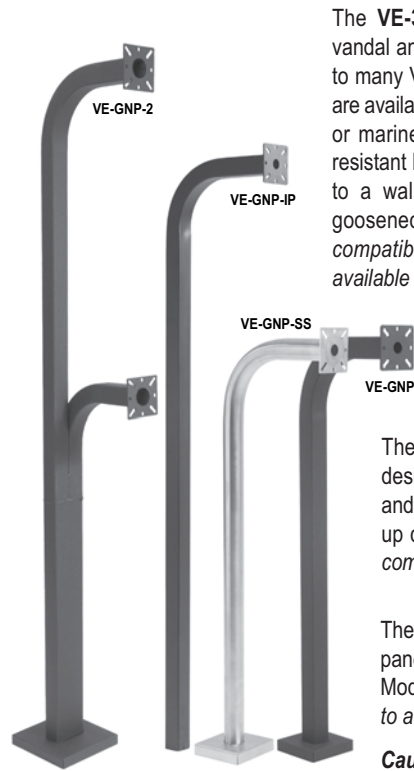
COMMUNICATION & SECURITY SOLUTIONS

VE-Series

Surface Mount Boxes
and Pedestals

July 5, 2016

Surface or Pedestal Mount Viking Products While Maintaining Weather and Vandal Resistance

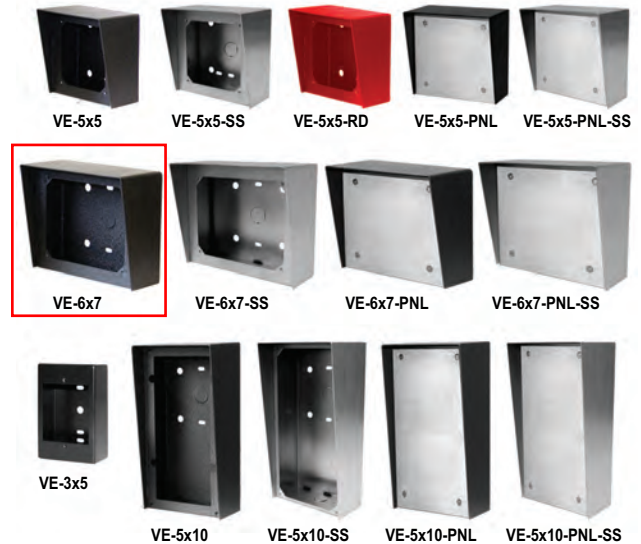


The **VE-3x5**, **VE-5x5**, **VE-6x7** and **VE-5x10** add vandal and weather resistance, as well as versatility to many Viking products. The **VE-Series** backboxes are available in black fine texture powder painted steel or marine grade 316 stainless steel. The weather resistant boxes are designed to be surface mounted to a wall, post, single gang box, or a **VE-GNP** gooseneck pedestal. **Note:** The **VE-3x5** is not compatible with the **VE-GNP** pedestals and is not available in stainless steel.

The **VE-GNP** gooseneck pedestals are designed to be used with the **VE-5x5**, **VE-6x7** and **VE-5x10** backboxes and are ideal for drive up communications. **Note:** The **VE-3x5** is not compatible with the **VE-GNP** pedestals.

The **VE-PNL**'s are **VE-Series** backboxes with a blank aluminum panel. The user can customize the clear-coated aluminum panel to mount an **PRX-1** card reader, **PRX-2** keypad or switch. The kits come complete with box, gasket, panel and screws. Model numbers that end with "SS" are stainless steel version. **Note:** The use of magnets to mount the **VE-Series** enclosure to a metal surface can affect the operation of the enclosed product.

Caution: Handsfree phones are not suitable for noisy applications (see "Important" on page 2).



Features

- Surface mounts to a wall, post or single gang box
- **VE-5x5** mounts to a single or double gang box
- **VE-5x5**, **VE-6x7** and **VE-5x10** mount to the **VE-GNP** gooseneck pedestals
- **VE-PNL**'s blank aluminum panels are easy to modify
- Adds weather and vandal resistance
- Heavy duty, black powder painted steel or stainless steel

Applications

- Drive up communication
- Commercial door security
- Business / delivery entrances
- Vehicular gates
- Parking ramps/lots
- Truck stops / fuel islands

Specifications

Model	Shipping Weight (each)
VE-3x5	0.45 kg (1 lb)
VE-5x5 / SS / RD / PNL	0.9 kg (2 lbs)
VE-6x7 / SS / PNL	0.9 kg (2 lbs)
VE-5x10 / SS / PNL	1.36 kg (3 lbs)
VE-GNP	8.2 kg (18 lbs)
VE-GNP-SS	4.5 kg (10 lbs)
VE-GNP-2	13.6 kg (30 lbs)
VE-GNP-IG	10.2 kg (22.5 lbs)

www.vikingelectronics.com
Information: (715) 386-8861

Product specifications by model number on pages 2-7.

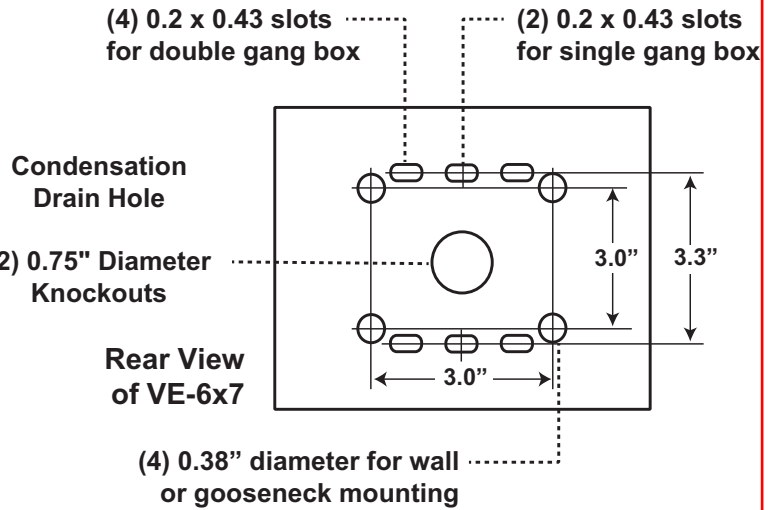
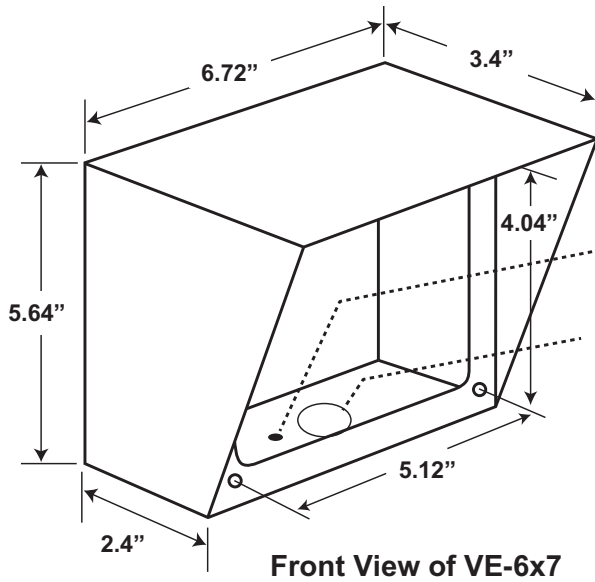
D. VE-6x7 / VE-6x7-SS Surface Mount Box

VE-6x7 Material: 16 gauge CRS

VE-6x7 Finish: UV stable black fine texture powder paint

VE-6x7-SS Material: 0.062 Marine Grade 316 stainless steel

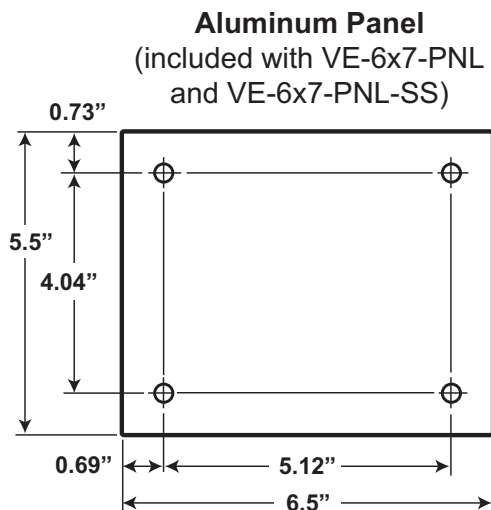
VE-6x7-SS Finish: #4B brushed



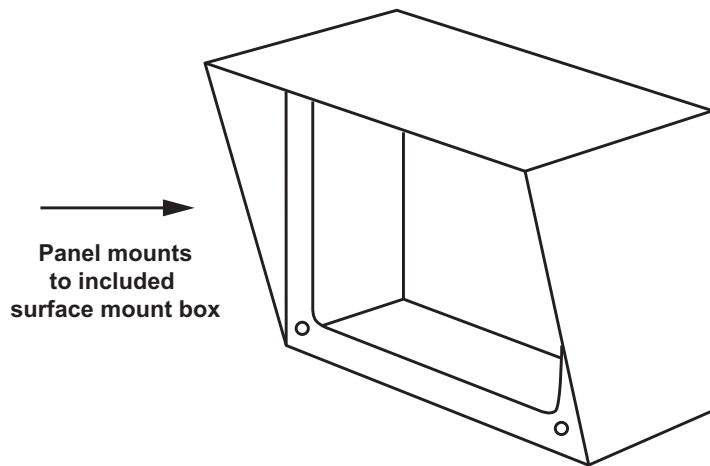
E. VE-6x7-PNL / VE-6x7-PNL-SS

Material: 12 gauge aluminum

Finish: UV stable clear gloss powder paint



VE-6x7 (included with VE-6x7-PNL) or
VE-6x7-SS (included with VE-6x7-PNL-SS)



Knox-Box® 3200 Series

The number one high-security Knox-Box® is used for most commercial applications including businesses, schools, government and public buildings, community associations and apartment complexes. The 3200 Series Knox-Box holds keys, access cards and other small items necessary for emergency access.

We recommend the hinged-door 3200 Series Knox-Box because it allows single-handed operation. We also recommend use of the alarm tamper switch. The tamper switch allows you to connect the Knox-Box to the building's alarm system, adding even further security.

Options/Accessories Available

- Two Door Types: Hinged and Lift-off
- Two Mount Types: Recessed and Surface
- Three Color Options:



- Recess mount kit (RMK) available for new masonry construction
- Multi-purpose electrical switch
- Alarm tamper switch

Capacity

10

Keys and/or access cards



Recessed Mounting Kits Available

What Can Fit Inside?



Keys



Access Cards



Multi-Purpose Switch



#3264



#3202



#3275

Holds up to 10 Keys

Ship Weight = 10 lbs.



Knox-Box® 3200 Series

Door Type	Mount Type	Tamper Switch	Color	Part Number	
Hinged	Surface Mount	-	Black	3261	
		•	Black	3262	
		-	Aluminum	3263	
		•	Aluminum	3264	
		-	Dark Bronze	3265	
		•	Dark Bronze	3266	
	Recess Mount	-	Black	3270	
		•	Black	3271	
		-	Aluminum	3272	
		•	Aluminum	3273	
		-	Dark Bronze	3274	
		•	Dark Bronze	3275	
Optional Multi-purpose electrical switch				3291	
3200 Hinged Door Recessed Mounting Kit				3290	
Lift-Off	Surface Mount	-	Black	3201	
		•	Black	3202	
	Recess Mount	-	Black	3220	
		•	Black	3221	
	Optional Multi-purpose electrical switch				3241
	3200 Lift-off Door Recessed Mounting Kit				3240



Dimensions

Surface Mount: 4" H x 5" W x 3-3/4" D
Recessed Mount: 7" H x 7" W Flange



Dimensions

Surface Mount: 5" H x 4" W x 3-3/4" D
Recessed Mount: 7" H x 7" W Flange

33 Bowdoin Street
Ceiling Light at Front and Side Entry

FEISS
EST. 1955

Comments:

Job Type:

Quantity:

OL1013ORB: 2 - Light Ceiling Fixture

Dimensions:

Width: 13"

Wire: 180"

Height: 7 3/4"

Connection: Mounted To Box

Weight: 18 lbs.

Bulbs:

2 - Medium A19 60w Max. 120v - Not included

Features:

•

Material List:

1 Body - Stainless Steel - Oil Rubbed Bronze

Safety Listing:

Safety Listed for Wet Locations

Instruction Sheets:

English (OL1013)



Collection: Homestead

UPC #: 014817237634

Finish: Oil Rubbed Bronze (ORB)

Shipping Information:

Package Type	Product #	Quantity	UPC	Length	Width	Height	Cube	Weight	Fr. Class	UPS Ship
Individual	OL1013ORB	1	014817237634	17.25	15.75	7.875	1.238	9	125	Yes
Master Pack	OL1013ORB	2	10014817237631	17.25	15.75	15.75	2.476	18	125	Yes
Shipping Master		2		17.25	15.75	15.75	2.476	18		Yes
NJ Pallet		48		48	40	67	74.444	432		No
NV Pallet		48		48	40	67	74.444	432		No



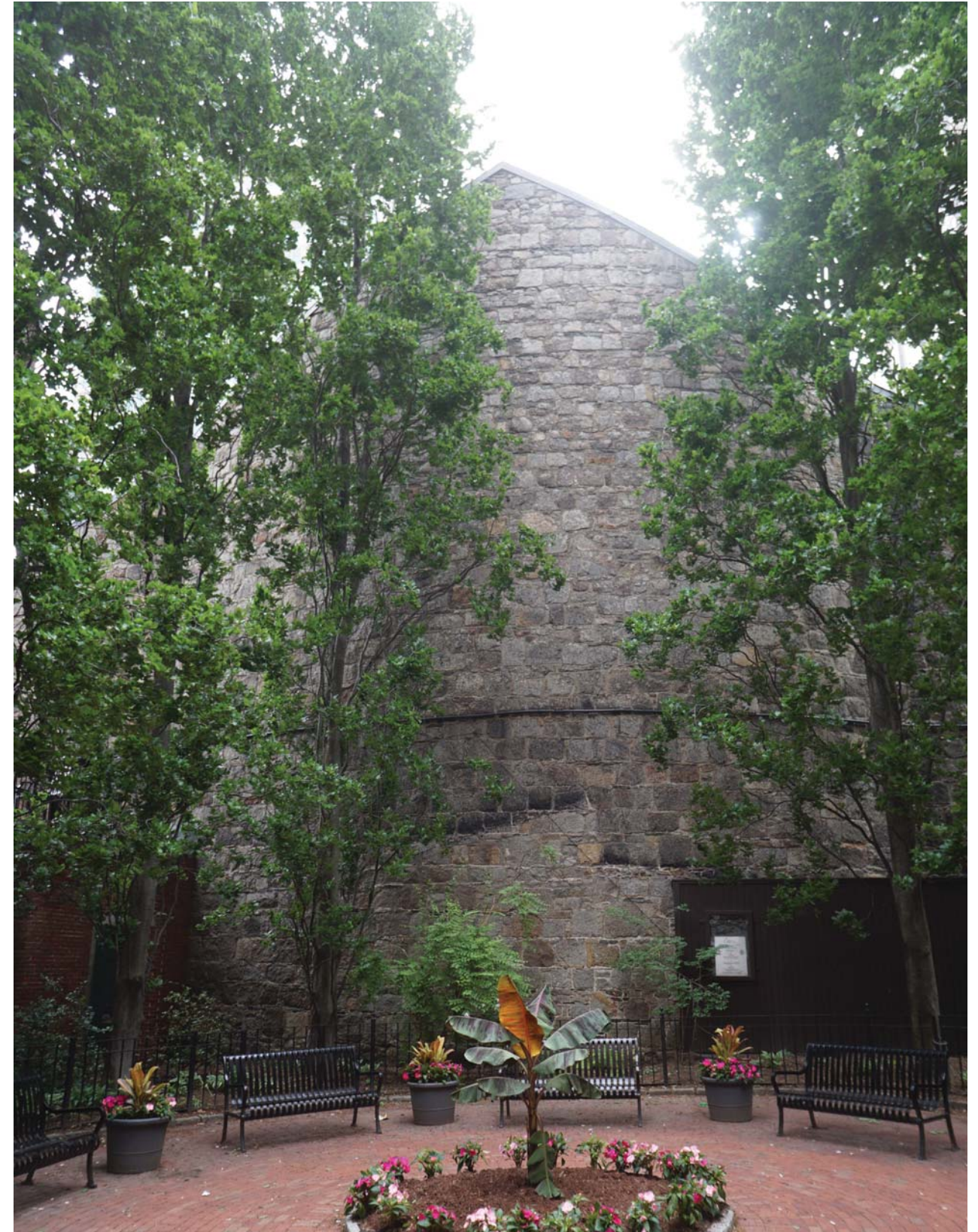
Finegold Alexander Architects

35 Bowdoin
Renovation Project

Existing Building Elevation



Bowdoin Street
Elevation

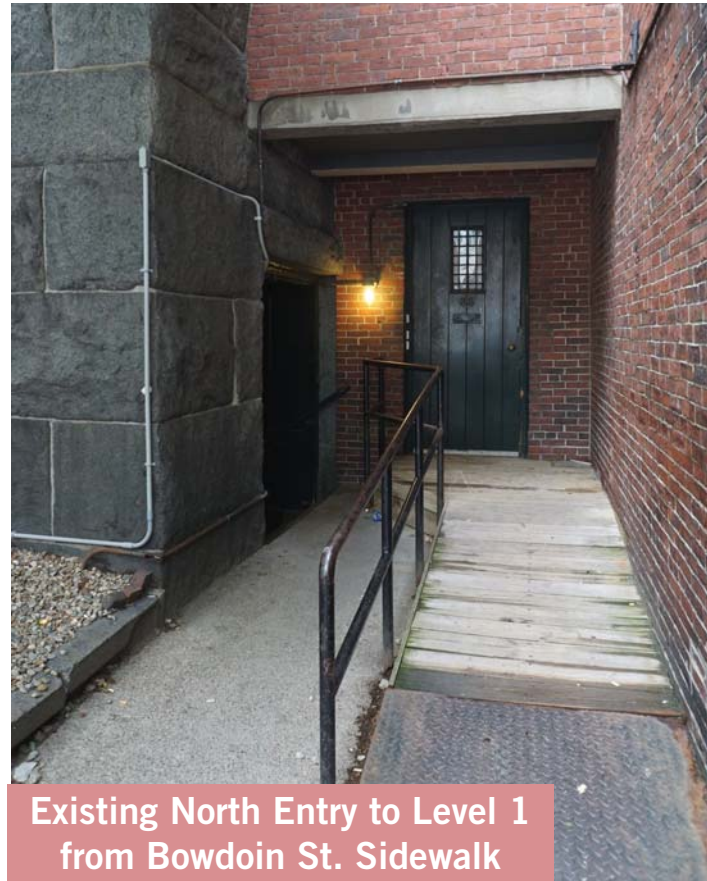


Temple Street
Elevation

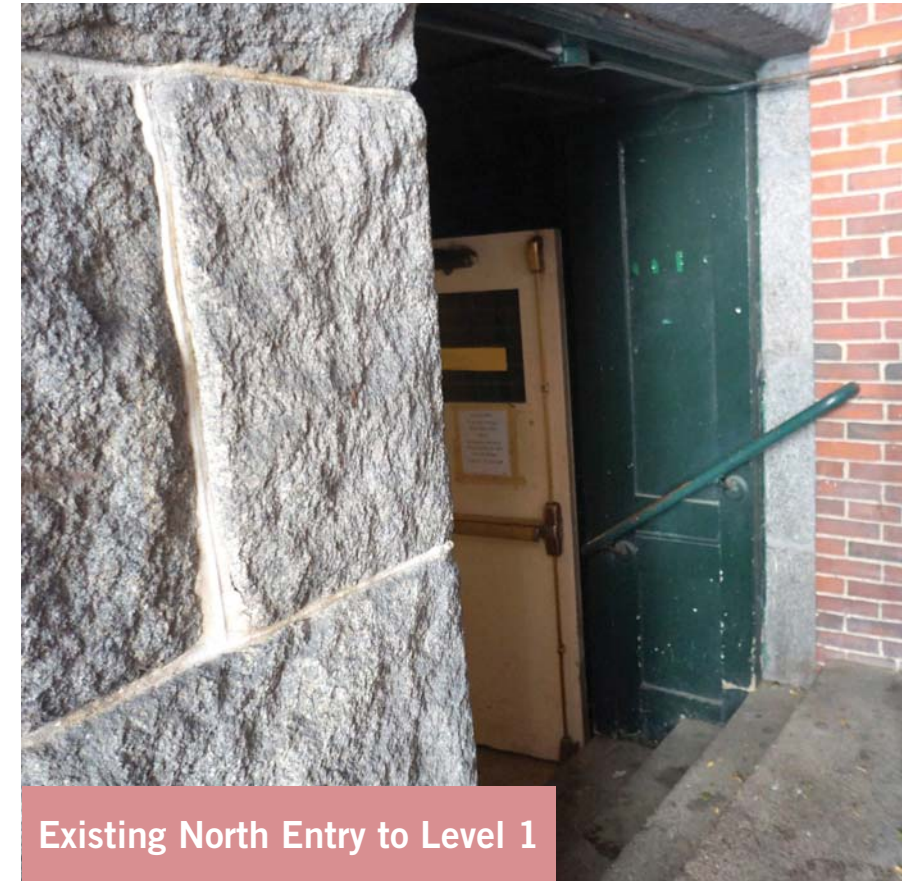
Existing Photos



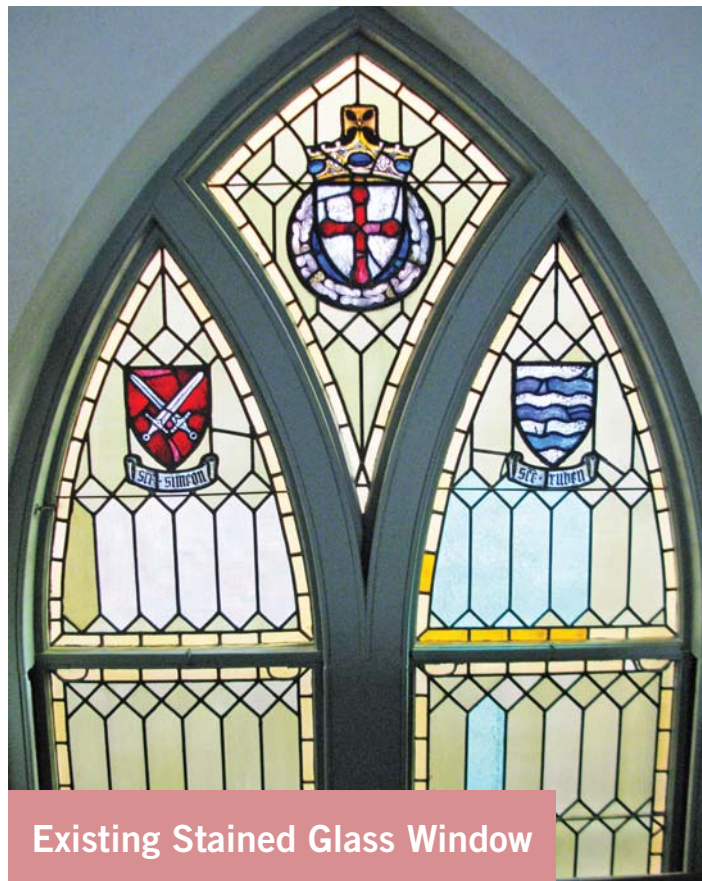
Existing Railing and Gate to South Courtyard



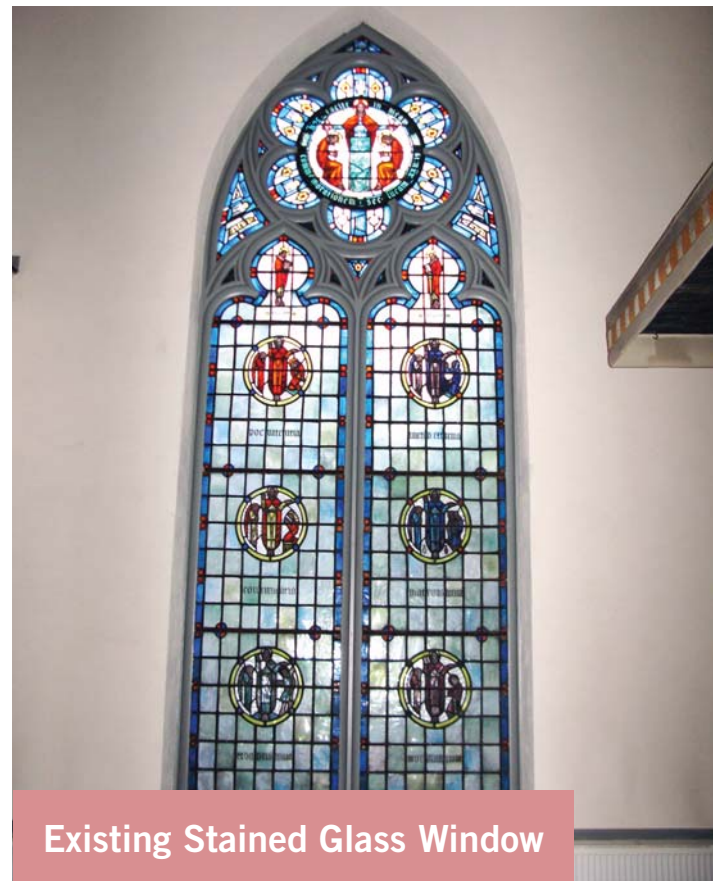
Existing North Entry to Level 1 from Bowdoin St. Sidewalk



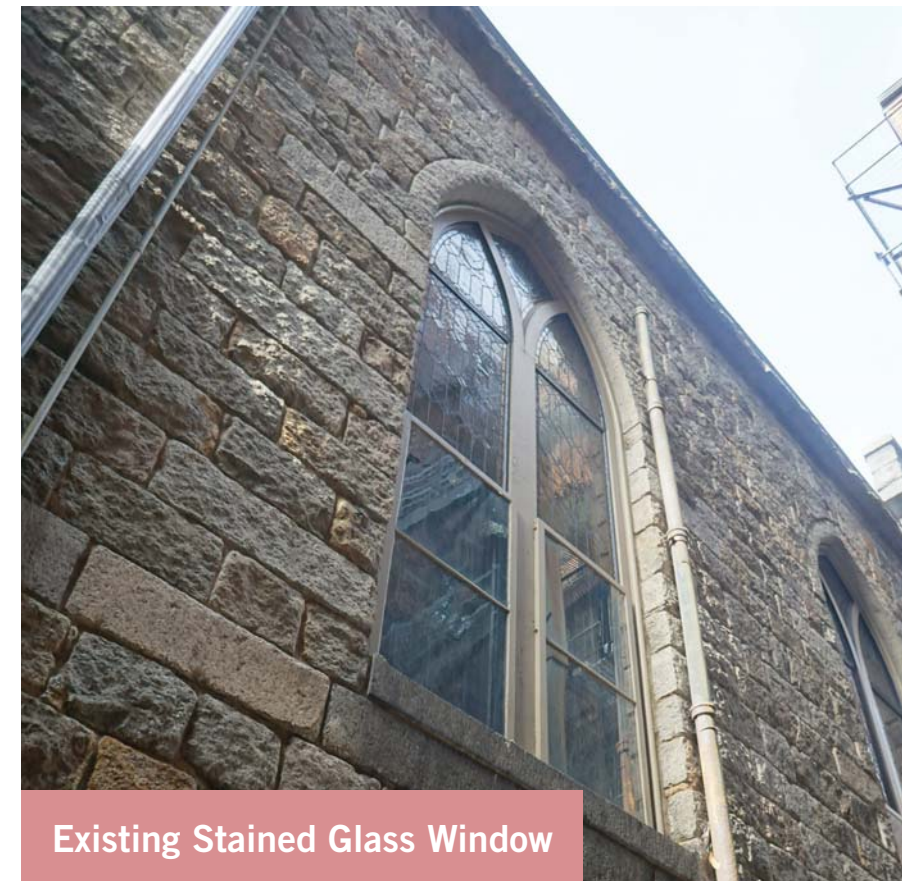
Existing North Entry to Level 1



Existing Stained Glass Window



Existing Stained Glass Window



Existing Stained Glass Window

Existing Photos



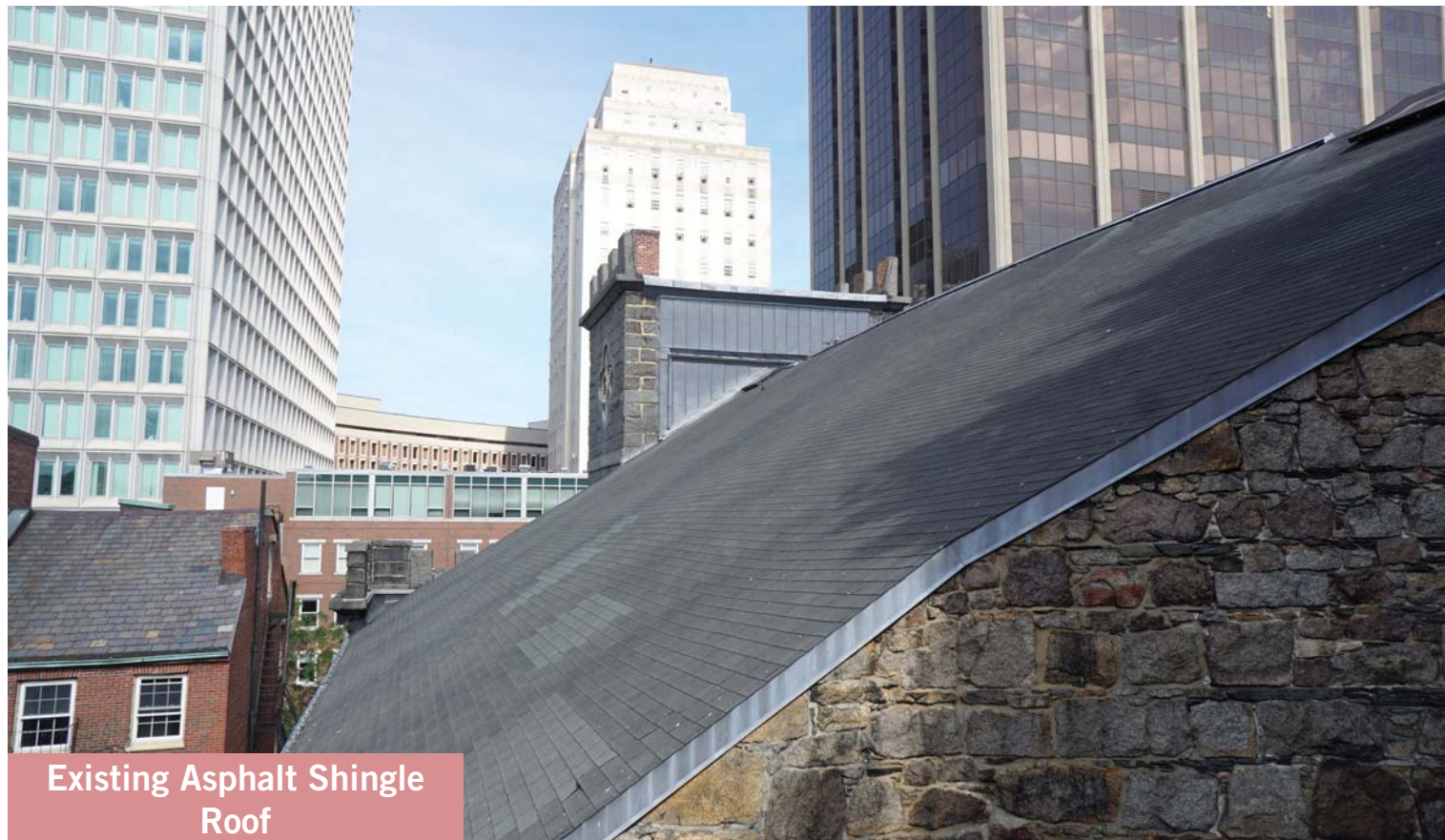
Existing Bell Tower Louvers



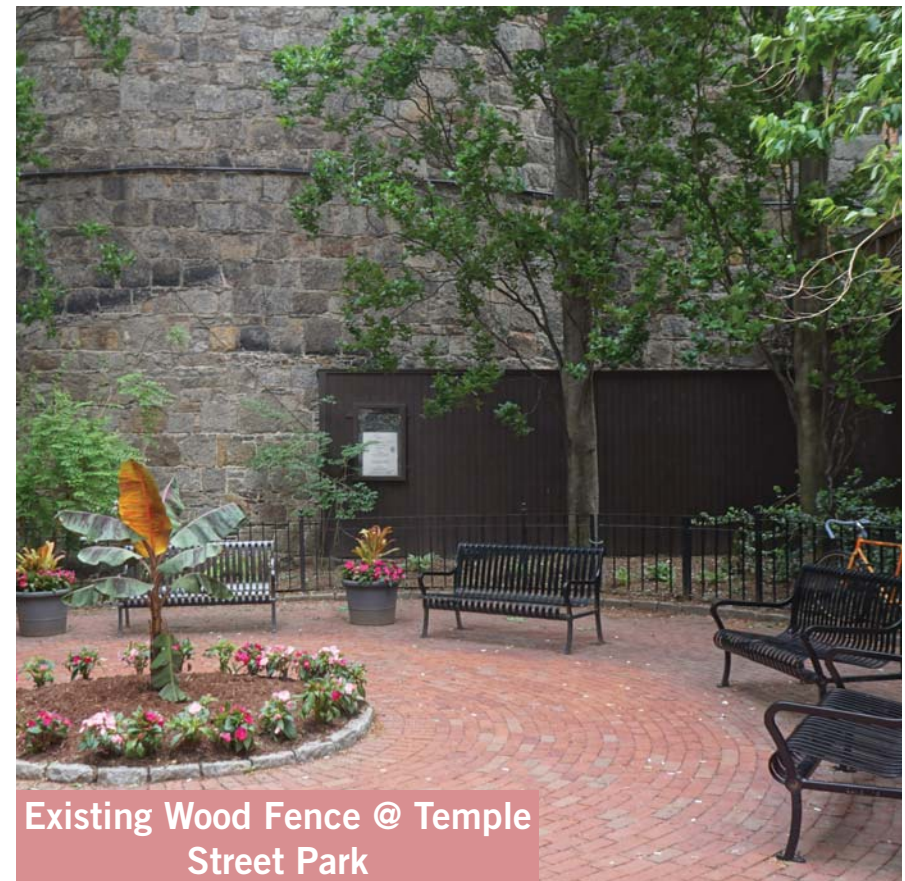
Existing Roof and Skylights



Existing Roof Skylight Detail



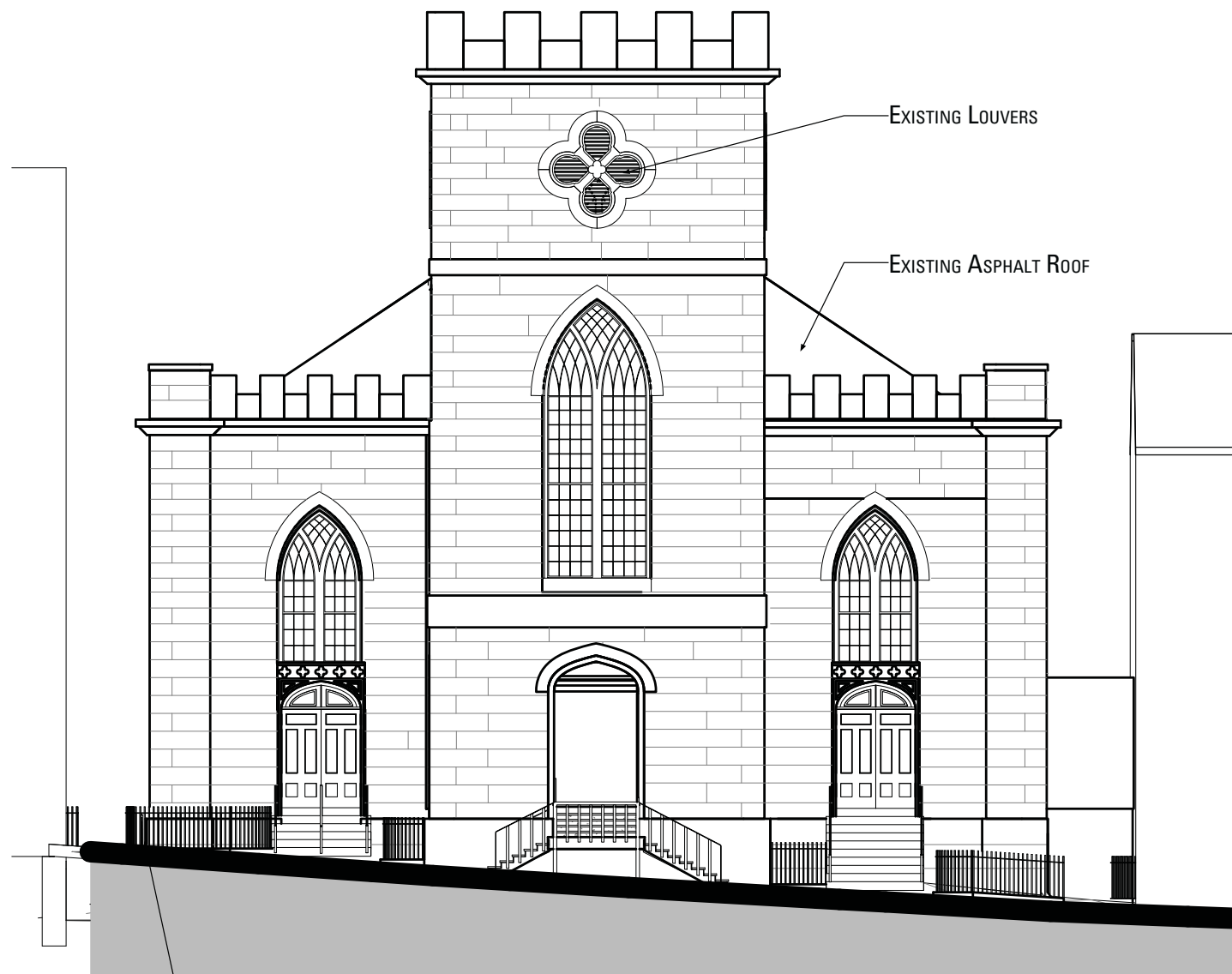
Existing Asphalt Shingle Roof



Existing Wood Fence @ Temple Street Park

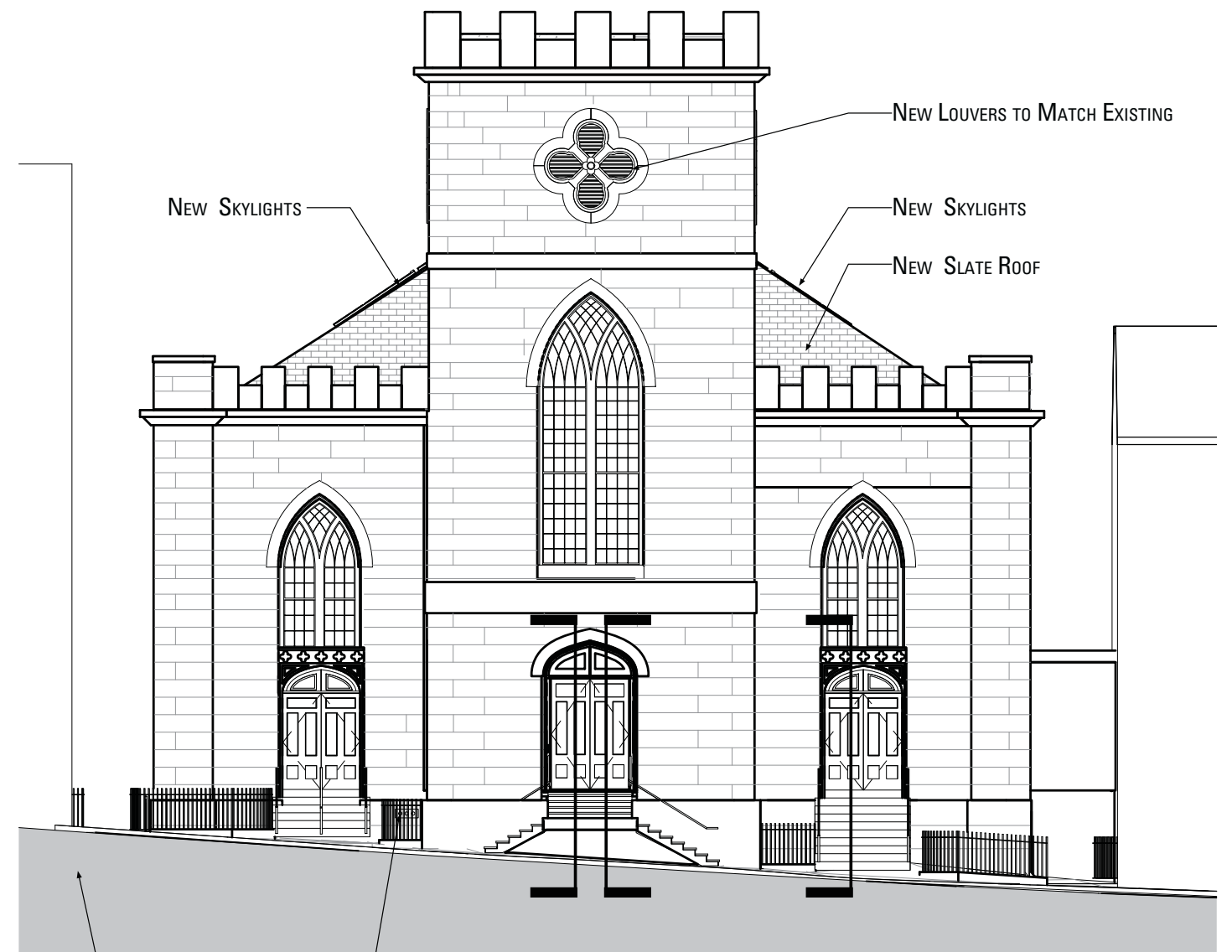
Existing East Elevation

Bowdoin Street



EXISTING RAILING AND GATE TO SOUTH ALLEY

Proposed East Elevation



NEW FIRE DEPARTMENT CONNECTION

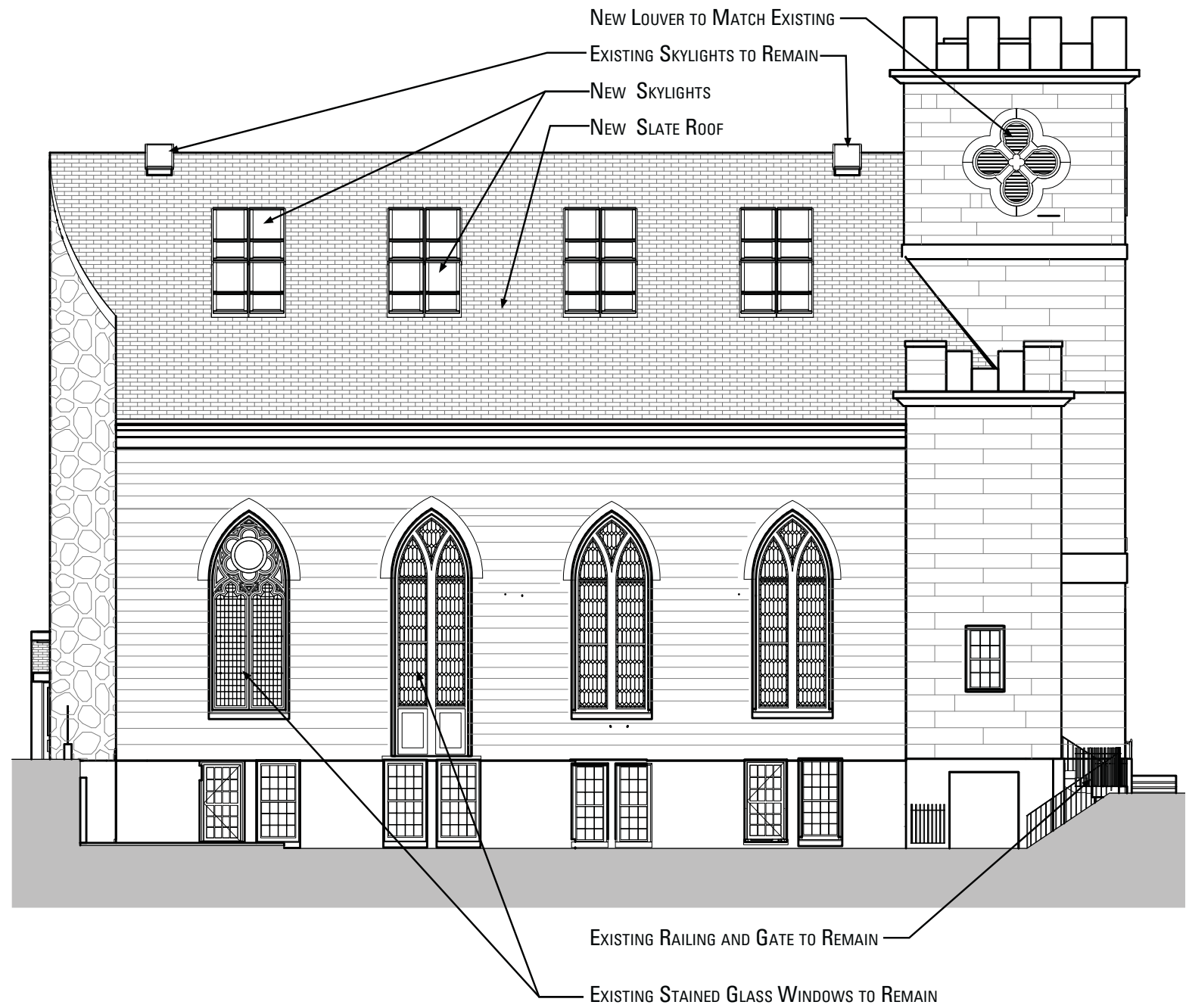
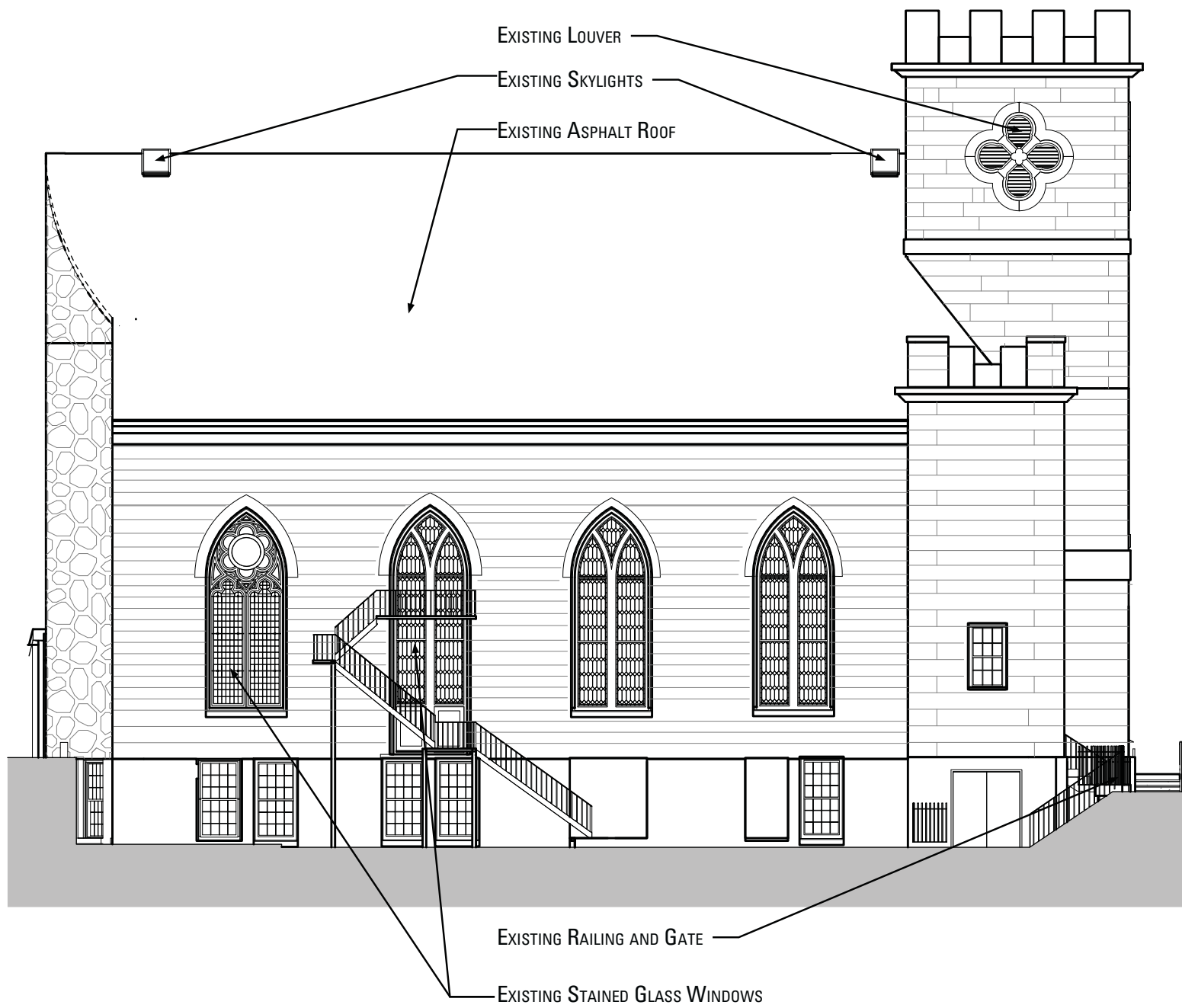
SEE PG. 10 FOR SECTION INFORMATION

SEE PG. 10 FOR SECTION INFORMATION

EXISTING RAILING AND GATE TO SOUTH ALLEY TO REMAIN

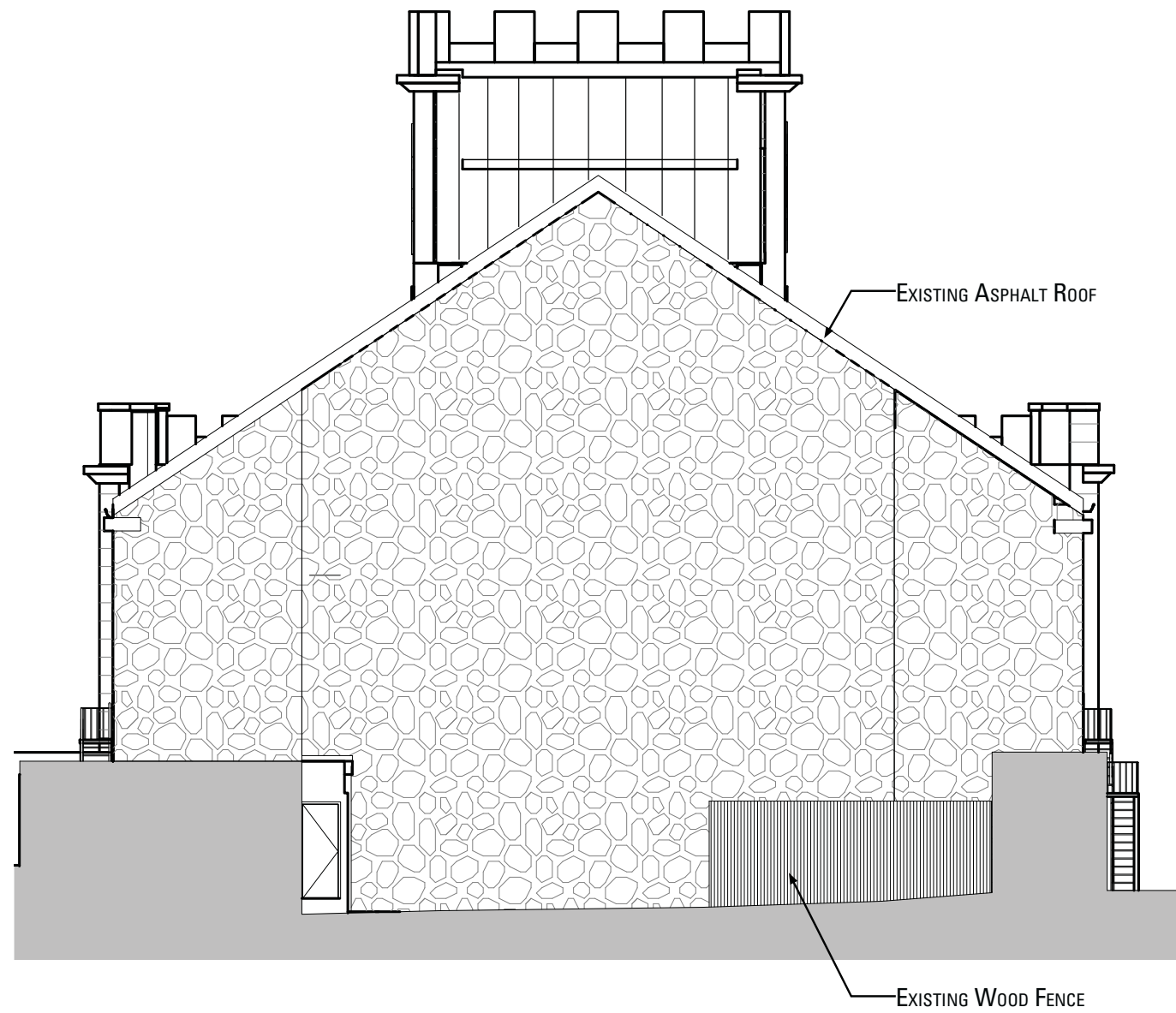
Existing South Elevation

Proposed South Elevation

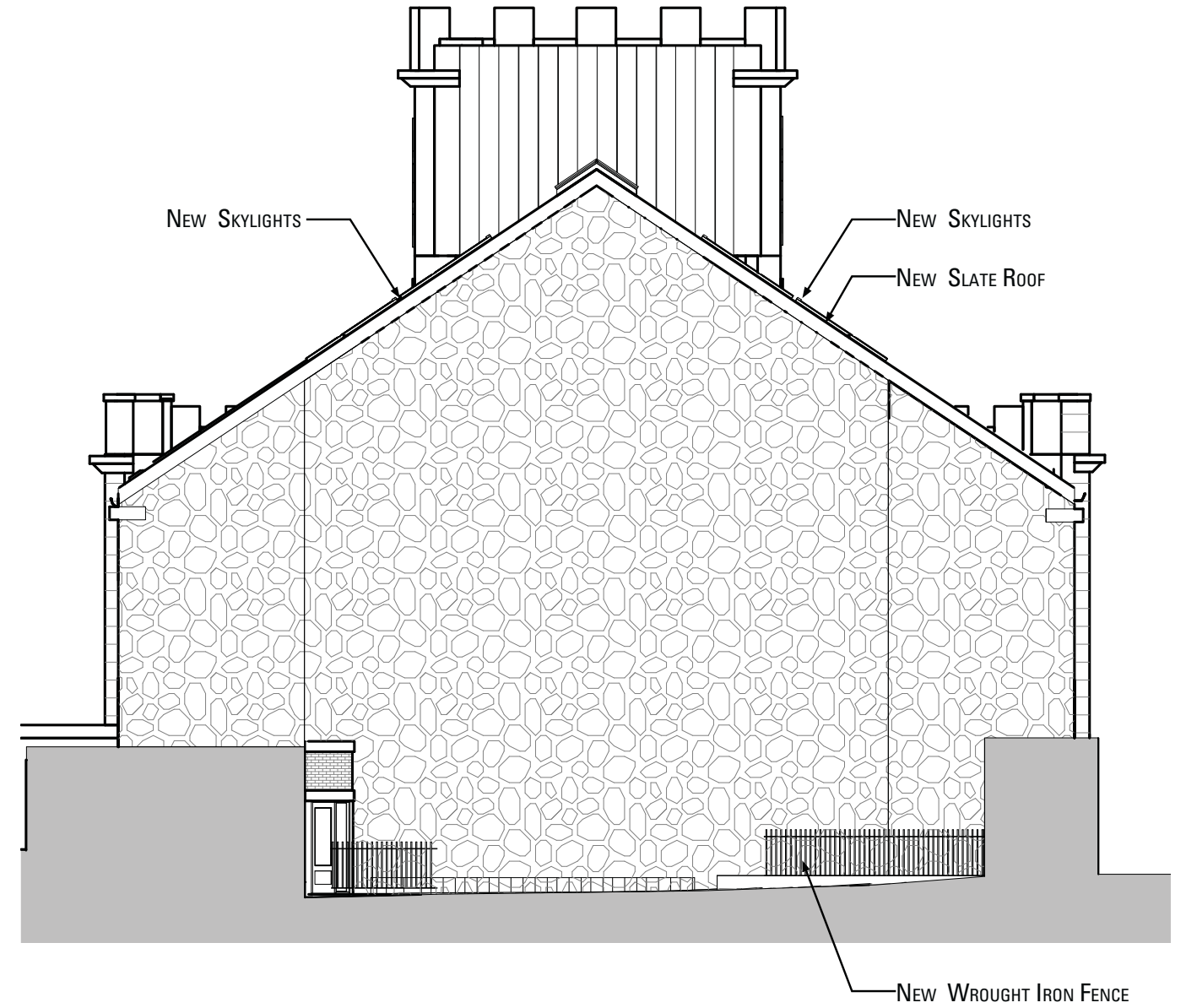


Existing West Elevation

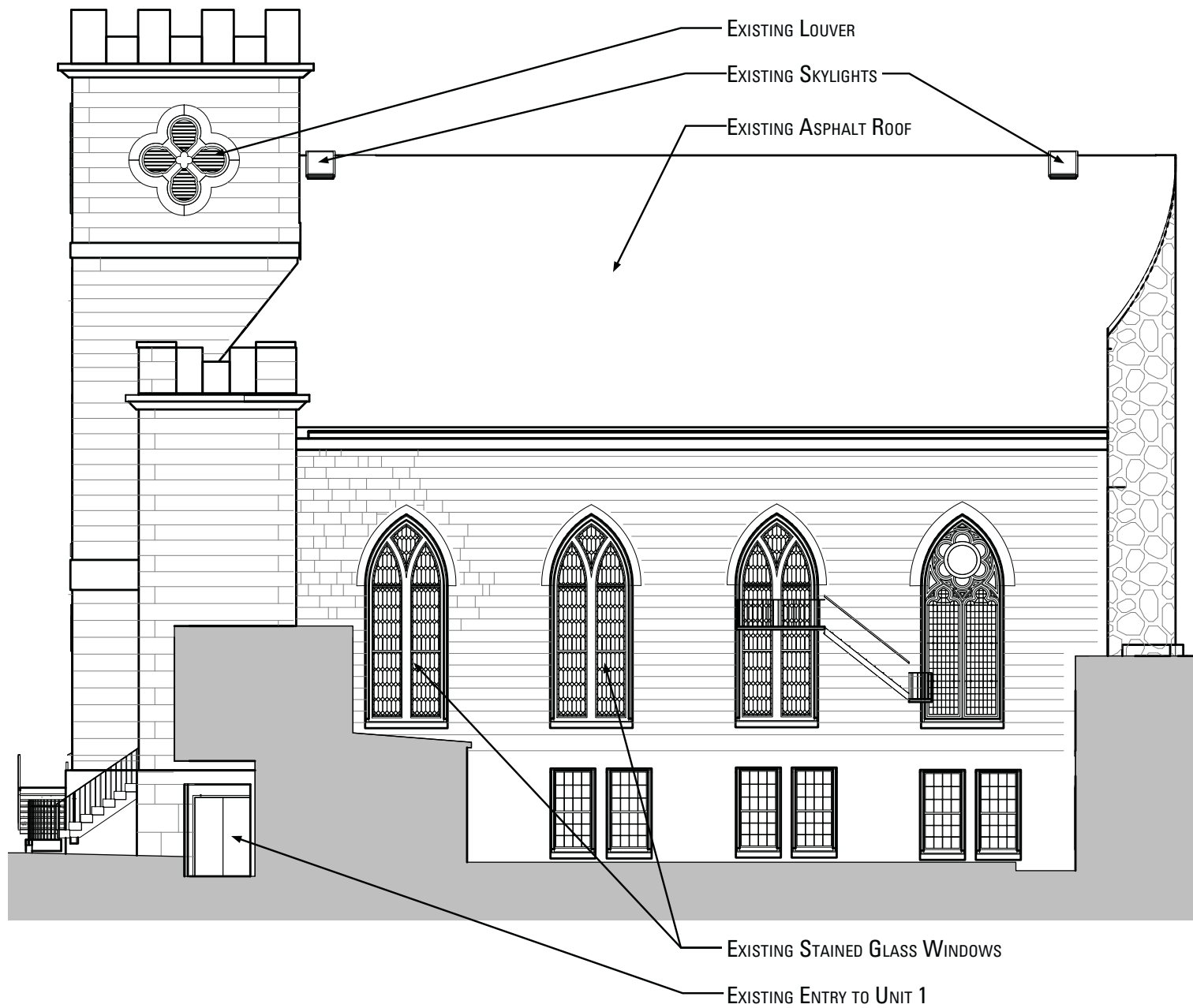
Temple Street



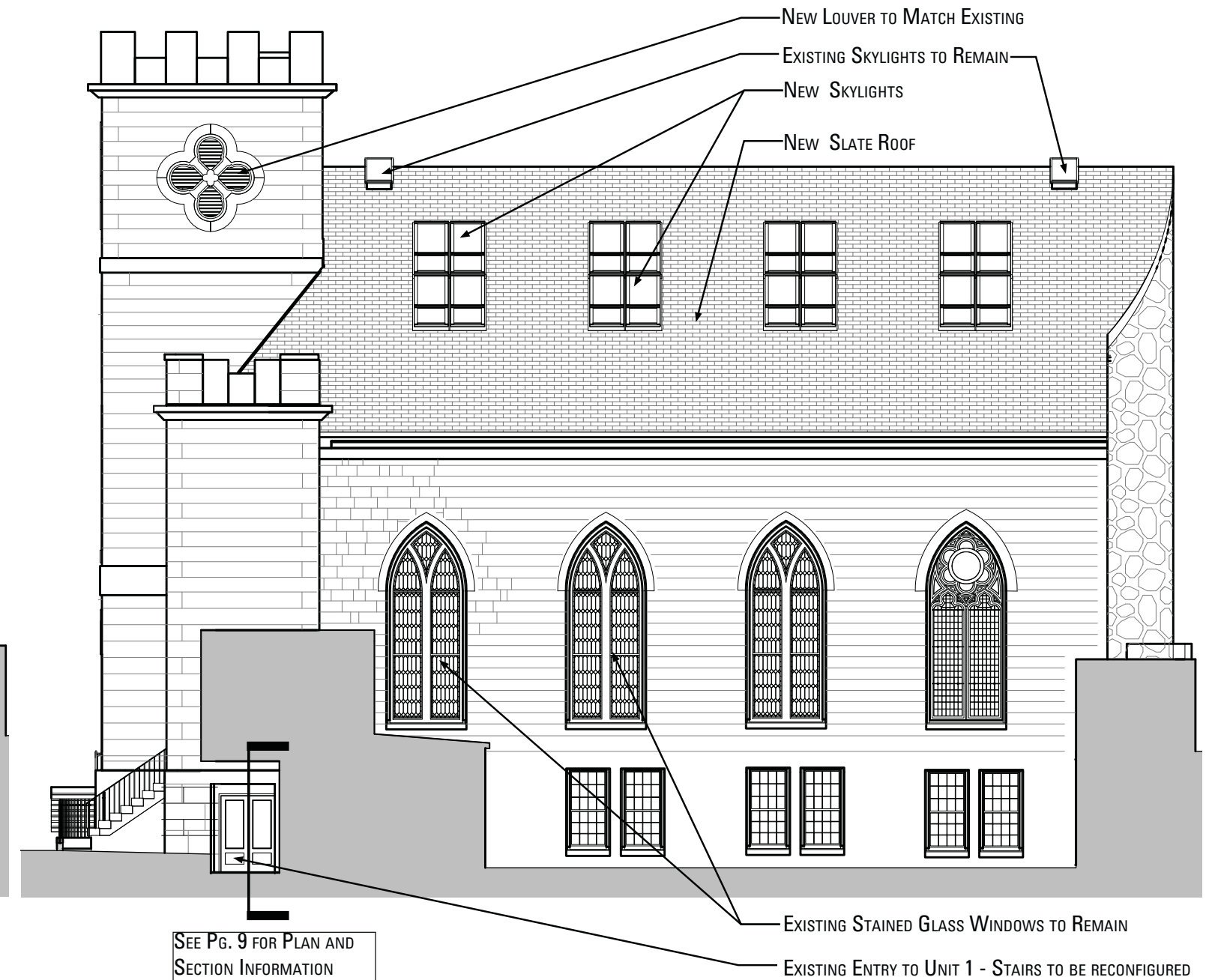
Proposed West Elevation



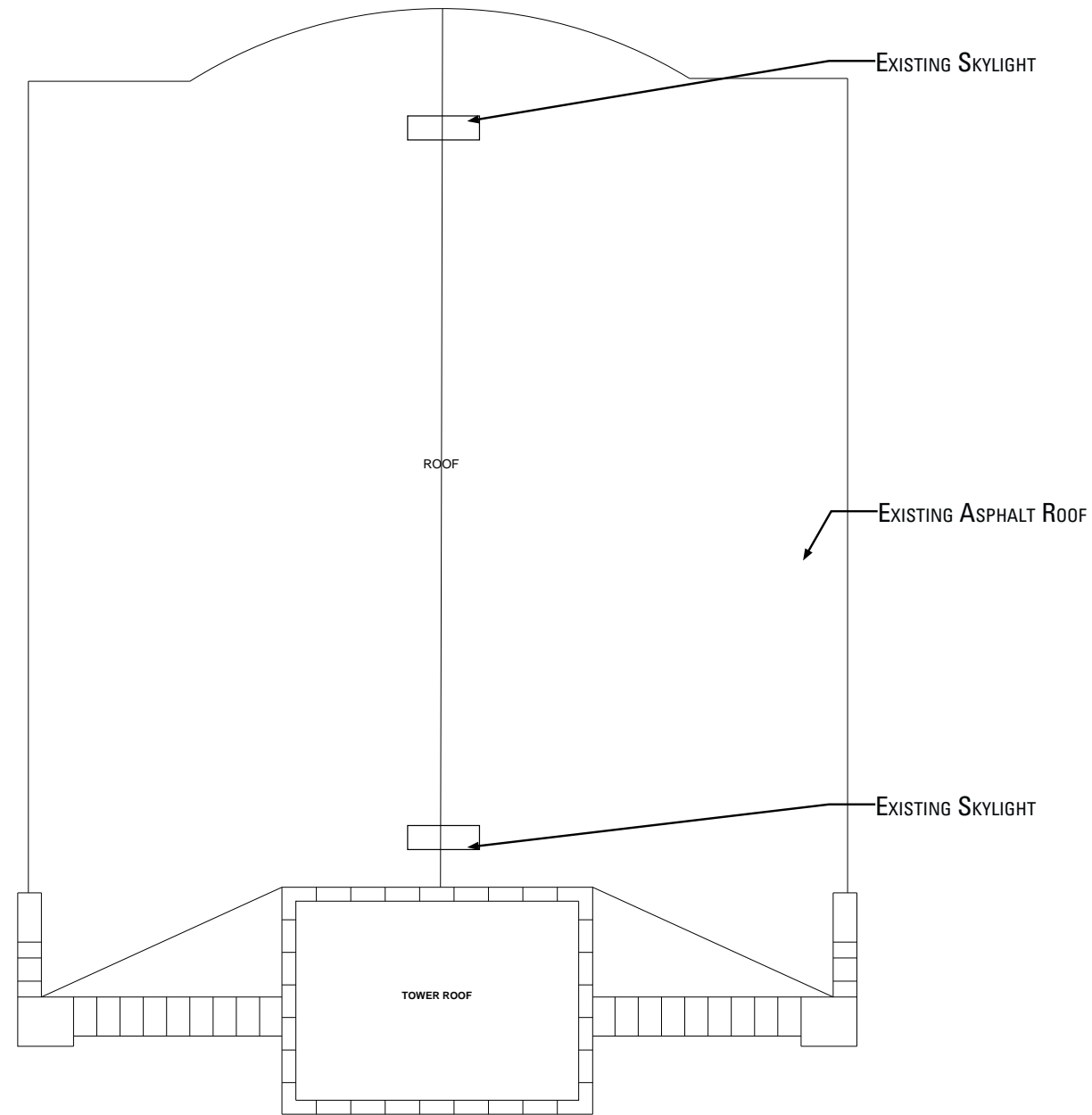
Existing North Elevation



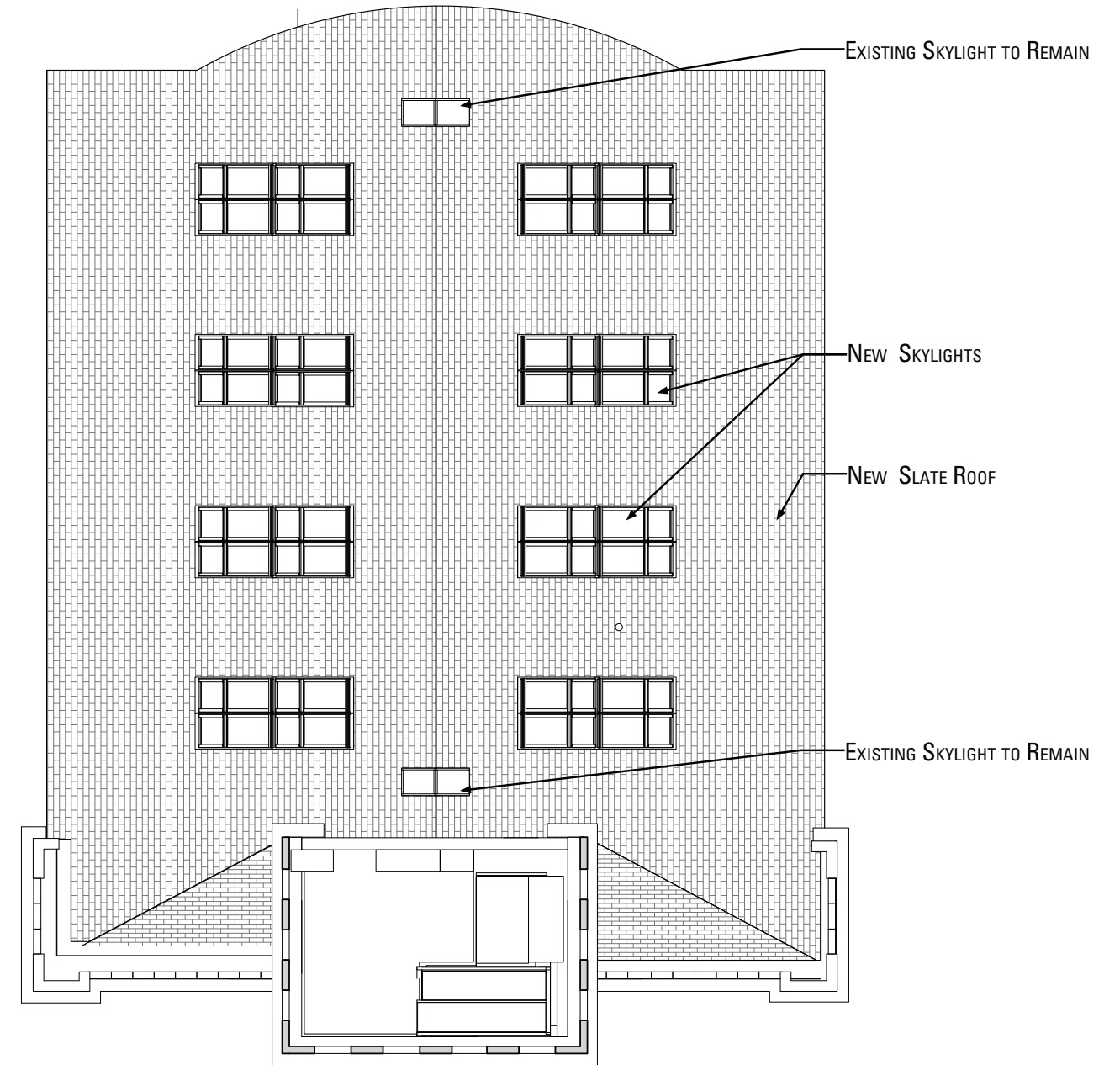
Proposed North Elevation



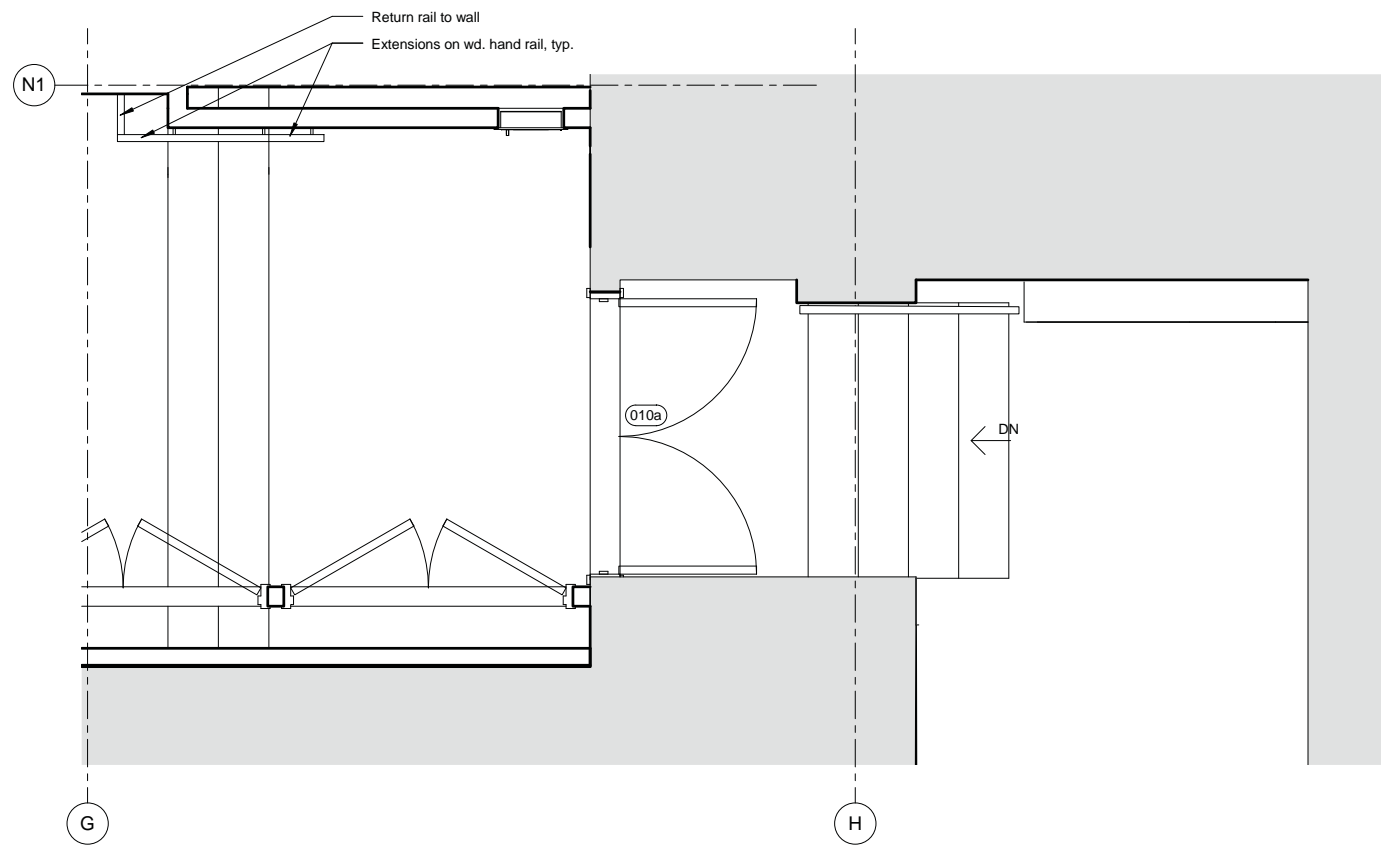
Existing Roof Plan



Proposed Roof Plan

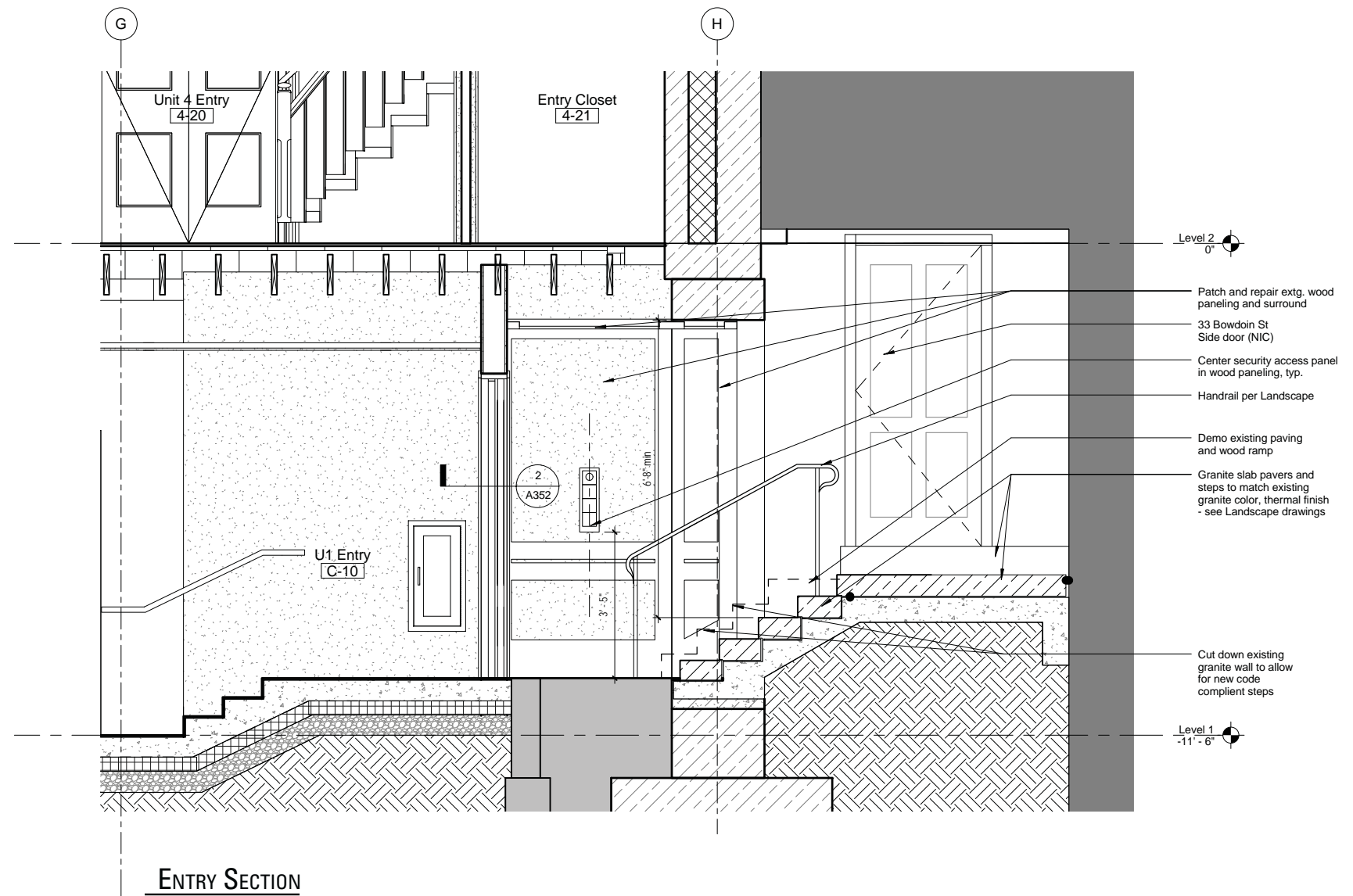


Level 1 North Entry - Plan



ENTRY PLAN

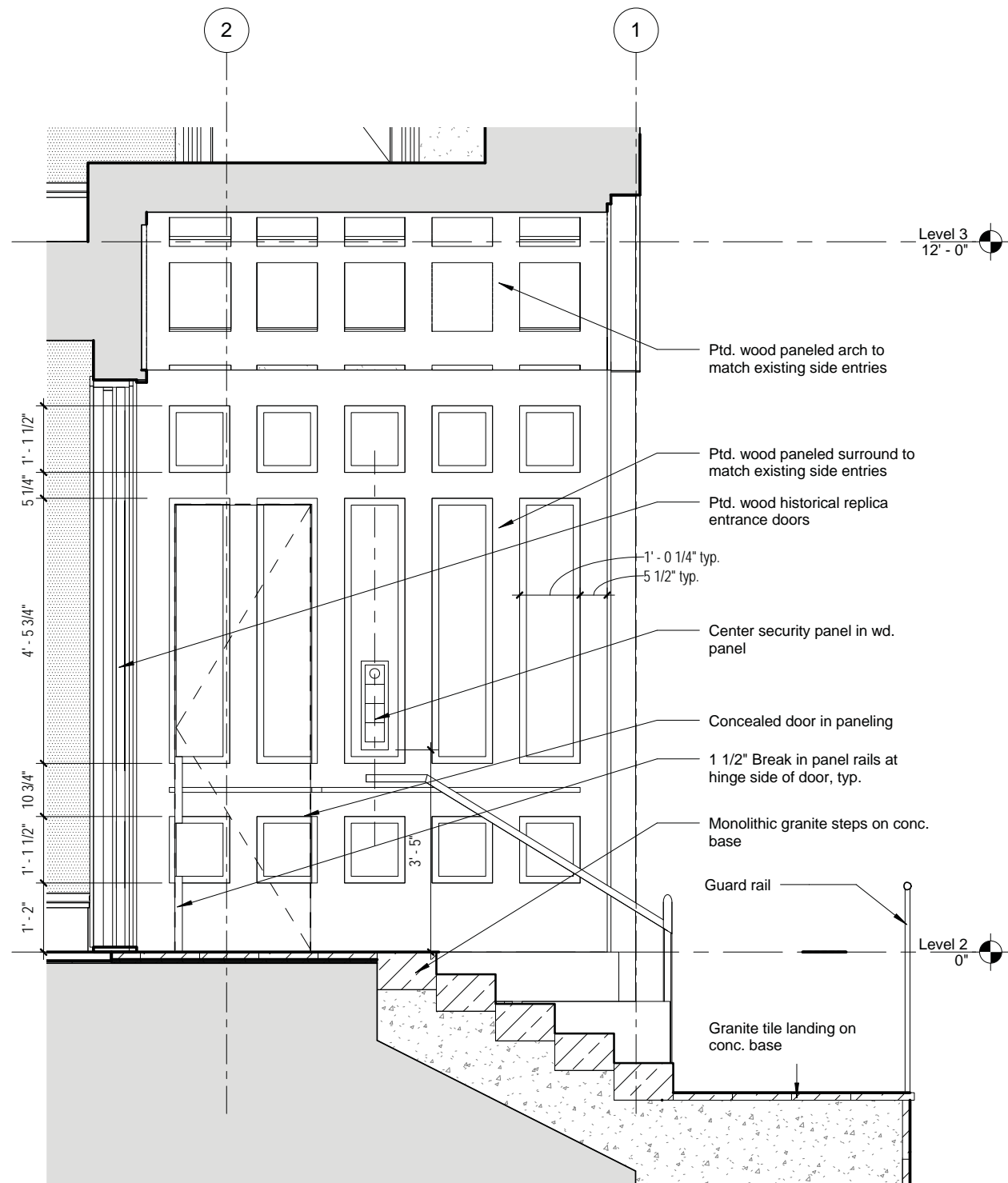
Level 1 North Entry - Section



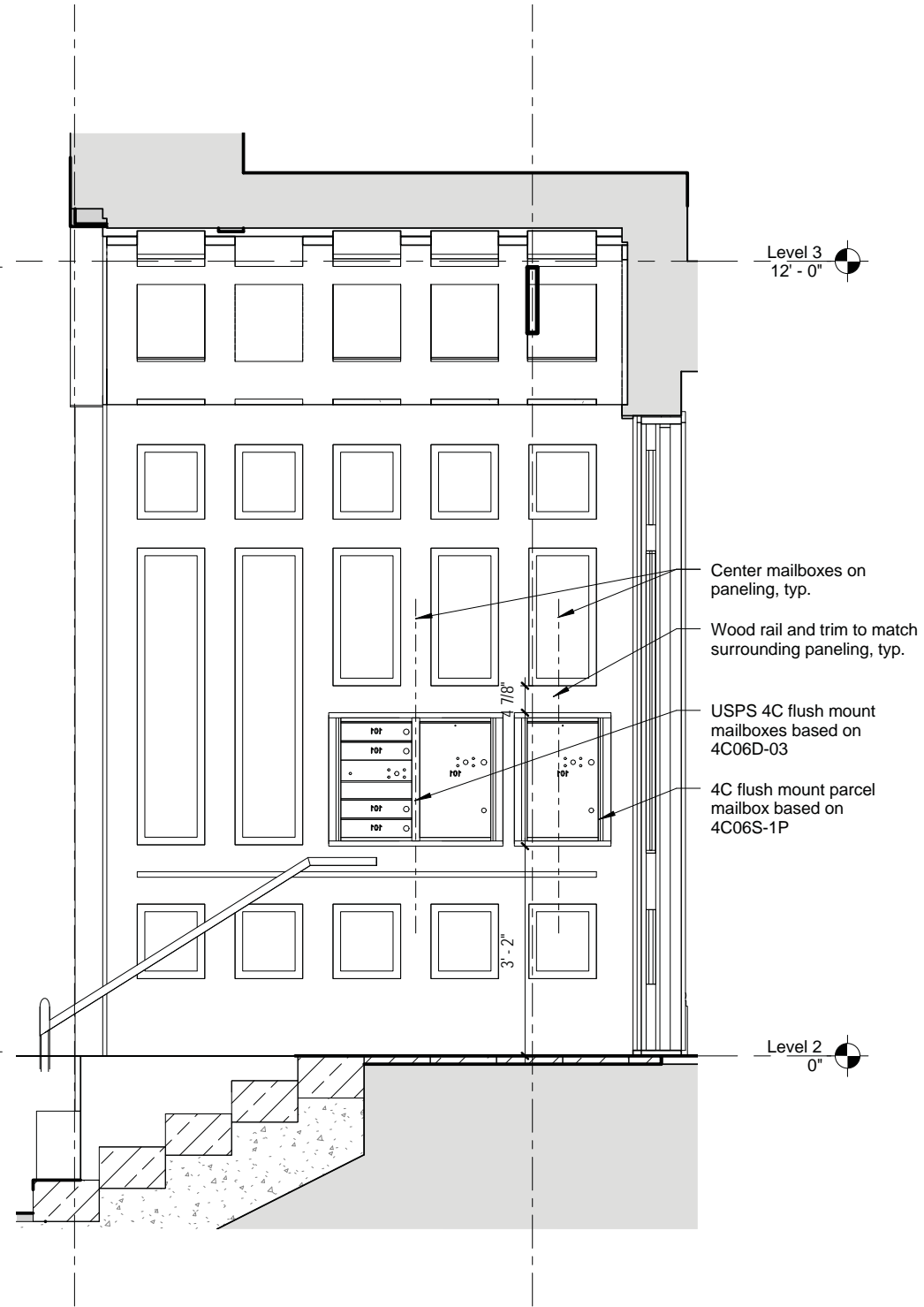
ENTRY SECTION

Bowdoin Street Main Entrance - Sections

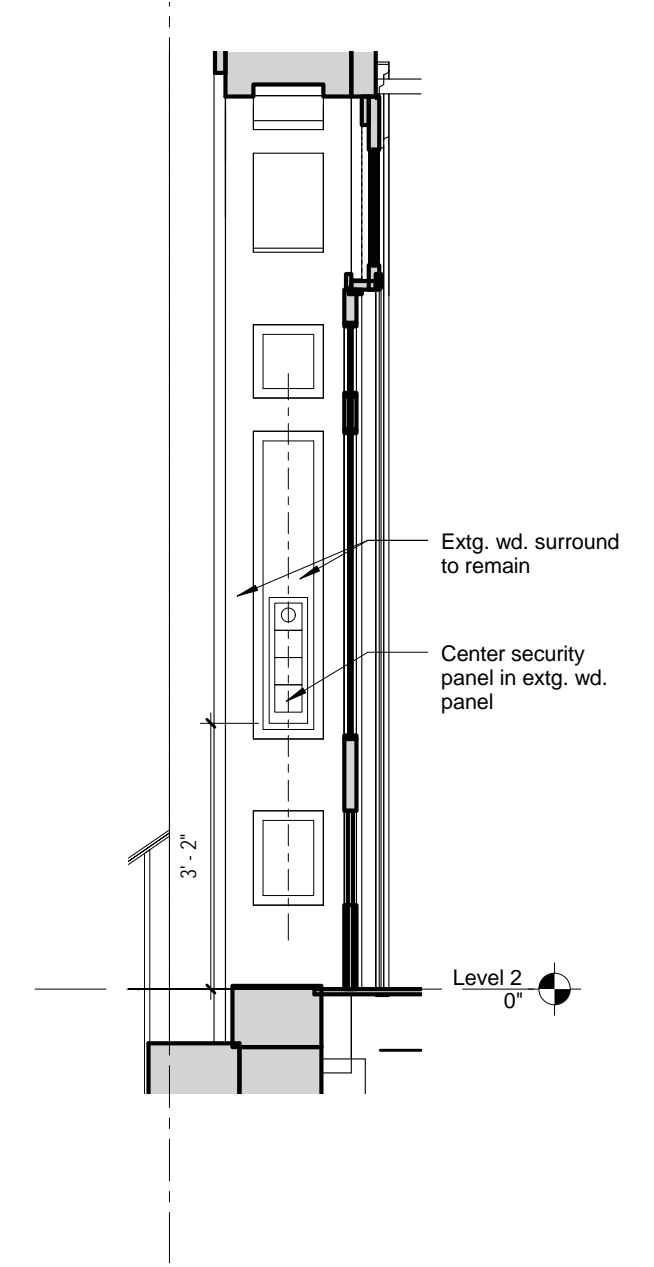
Bowdoin Street Unit 2 Entry - Section



ENTRY SECTION LOOKING NORTH



ENTRY SECTION LOOKING SOUTH



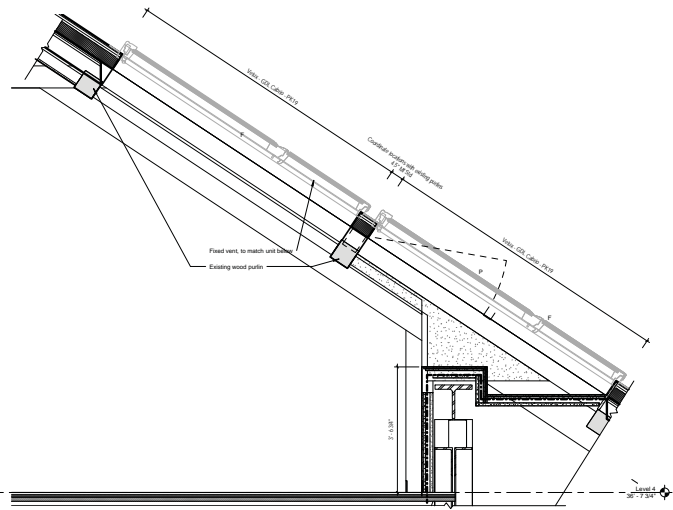
ENTRY SECTION LOOKING SOUTH

Unfolded Roof Plan

Velux Cabrio Roof Windows



Cabrio Example Image



Cabrio Section



View Angle Study: Coolidge



View Angle Study: Coolidge

Line of Sight



View Angle Study: Coolidge

Viewable Disturbance

