

Improvements to PARKMAN PLAYGROUND

Wachusett St

Barlow St

A
Parkman Playground

B

March 16, 2017
Boston Parks and Recreation



PROJECT OVERVIEW

PROJECT
AREA

Wachusett St

Barlow St

Parkman Playground



AGENDA

1

PROJECT TEAM INTRODUCTION

2

PROJECT OVERVIEW

3

PRESENTATION

4

LISTENING & DISCUSSION

5

CLOSING REMARKS & NEXT STEPS

PROJECT TEAM

Nathan Frazee

Project Manager

nathan.frazee@boston.gov or 617-961-3167

Marchelle Jacques-Yarde

Outreach Coordinator, External Affairs

marchelle.jacques-yarde@boston.gov or
617-961-3006

Joshua Burgel

Senior Associate, Crosby Schlessinger Smallridge

Samuel Basta

Landscape Architectural Designer, Crosby Schlessinger
Smallridge

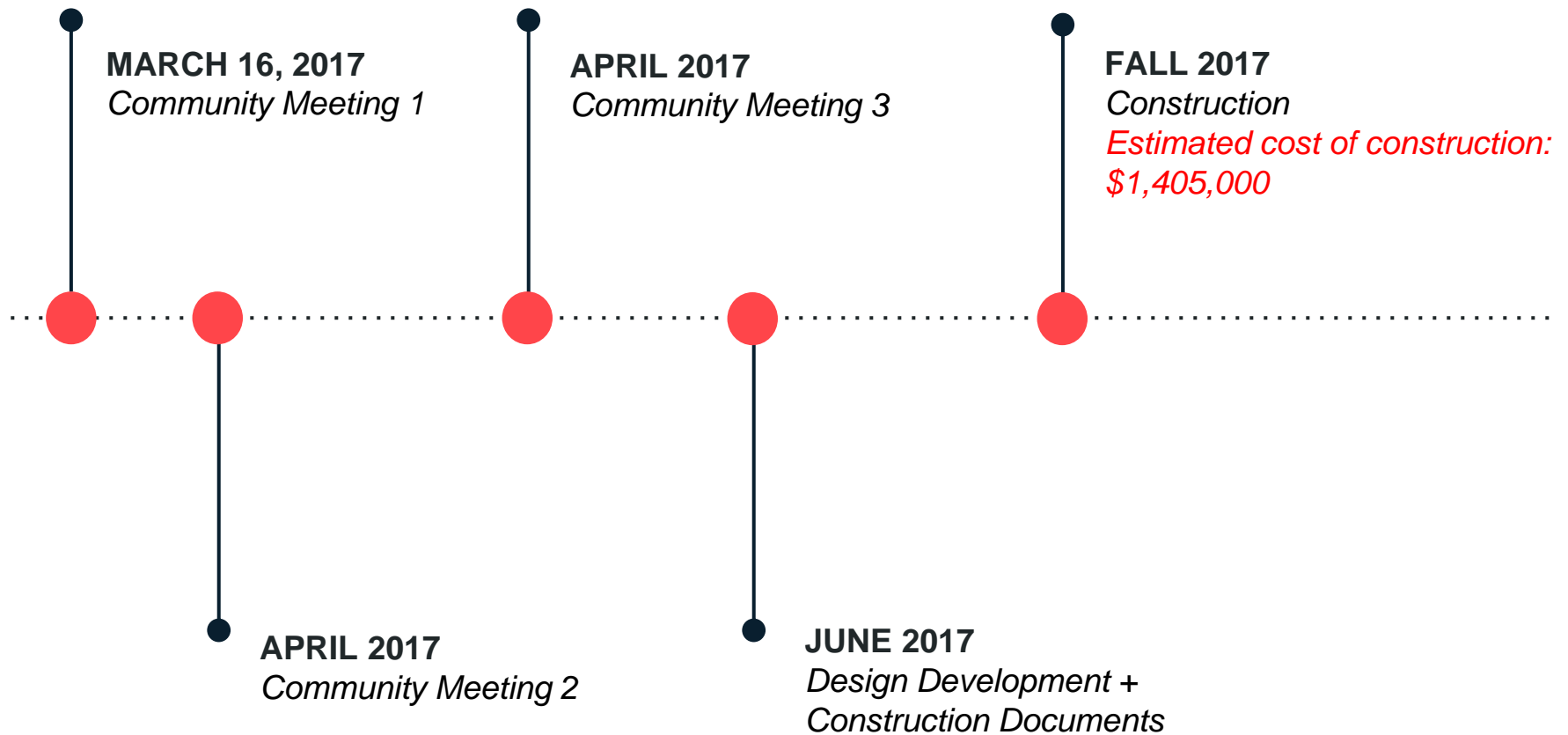
Alexandra Valdez

Office of Neighborhood Services

alexandra.valdez@boston.gov or 617-635-2185



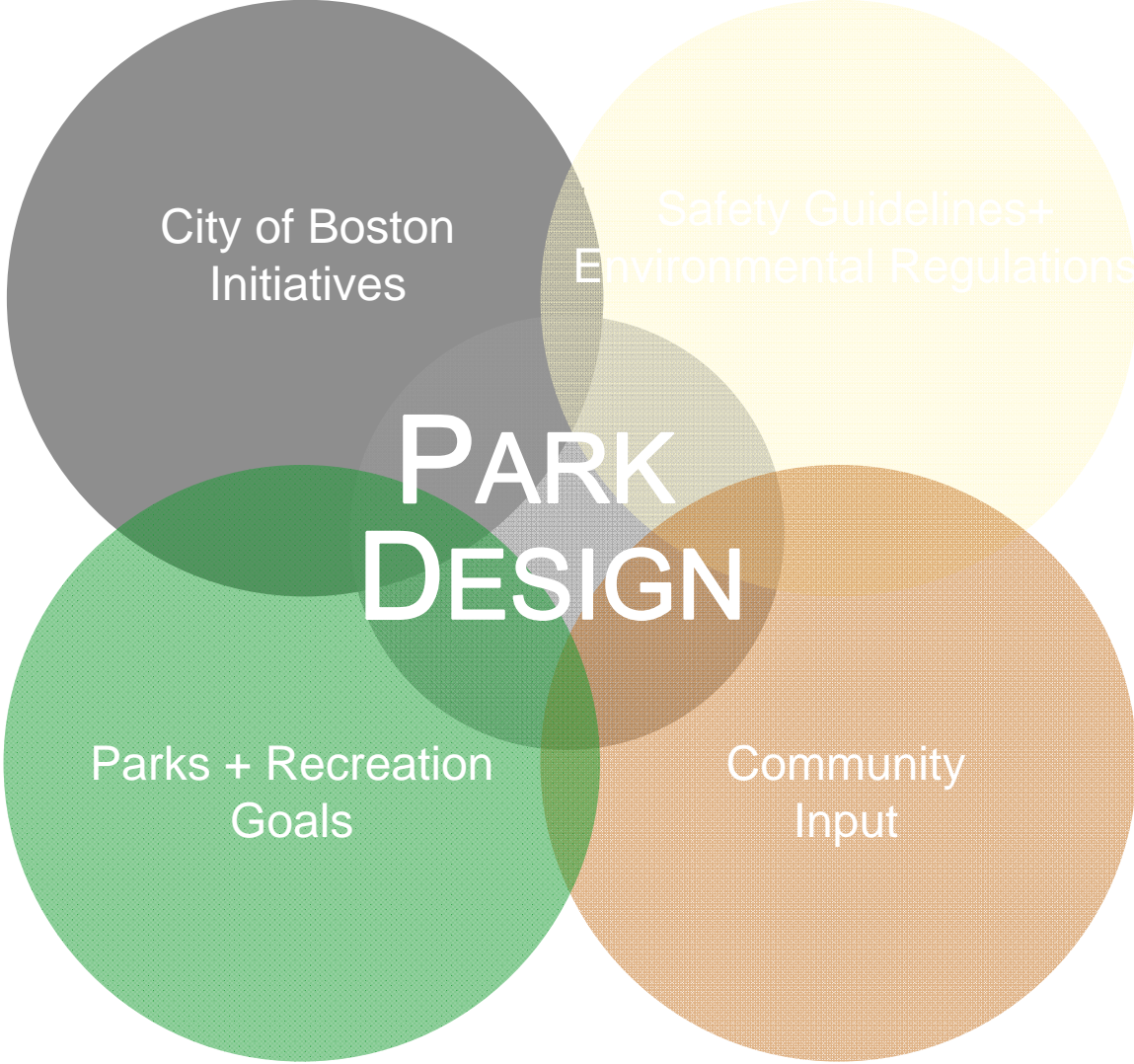
PROJECT SCHEDULE & FUNDING



PARK & RECREATION GOALS

- **Preserve and protect existing trees**
- **Expand usable park area**
- **Improve universal access**
- **Enhance park visibility**
- **Improve park access**
- **Design flexible, multi-functional park spaces**





City of Boston
Initiatives

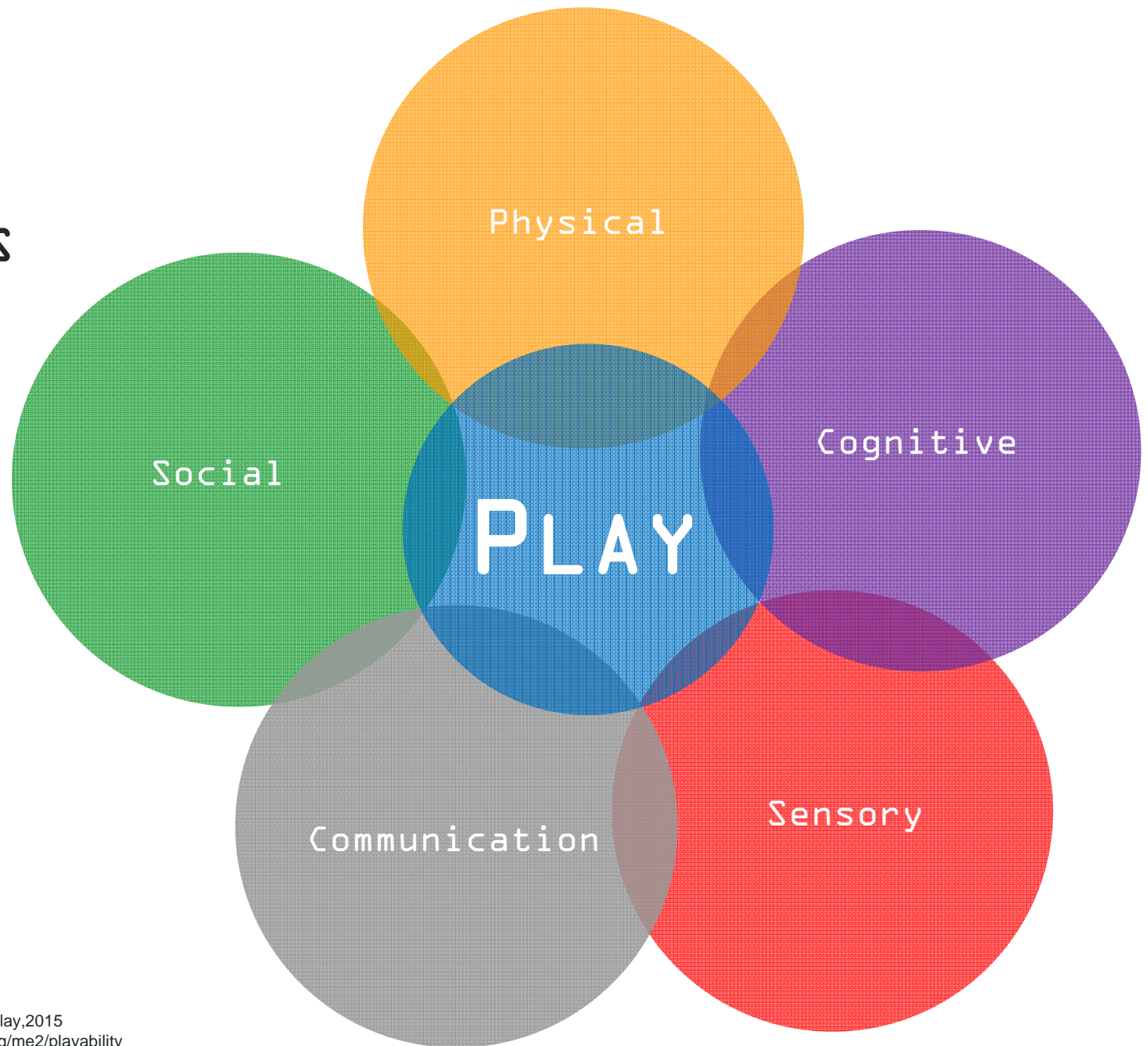
Safety Guidelines+
Environmental Regulations

**PARK
DESIGN**

Parks + Recreation
Goals

Community
Input

THE **5**
ELEMENTS
OF
PLAY



SOCIAL/ EMOTIONAL
COOPERATION, DRAMATIC +
IMAGINATIVE PLAY



SEATING + TABLE AREAS,
THEMATIC PLAY ELEMENTS
(SHIPS), PLAY HOUSES

PHYSICAL
GROSS MOTOR/ FINE MOTOR SKILLS,
FLEXIBILITY, ACCESSIBILITY,
HEALTHY RISK + VARIETY



DISH SWINGS, MOVEABLE
OBJECTS, SWINGS, MONKEY
BARS, BALANCE

SENSORY
TOUCH, VISUAL, AUDITORY, SMELL
VESTIBULAR, PROPRIOCEPTIVE +
INTEROCEPTIVE



PUSH/ PULL ELEMENTS
WATER ELEMENTS, VARIED
TEXTURES + COLORS,
SPINNING, MOVEABLE
OBJECTS, ROCKING

COGNITIVE
CREATIVITY, SENSE OF
ACCOMPLISHMENT, PROBLEM-
SOLVING, CAUSE + EFFECT, RISK
ASSESSMENT



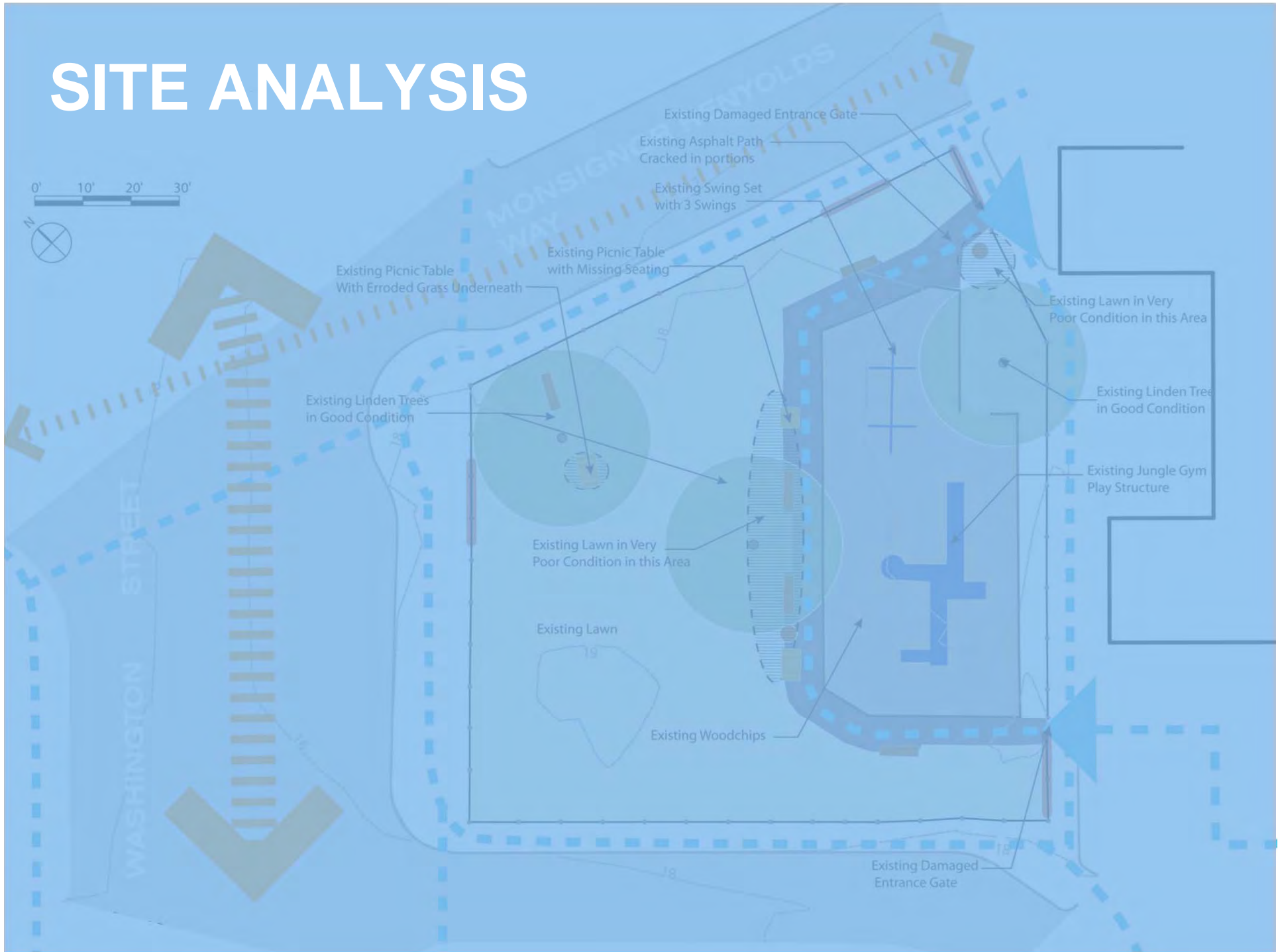
INTERACTIVE WATER
ELEMENTS, ROPE CLIMBER,
LINKED PLAY ELEMENTS

COMMUNICATION
DEVELOPMENT OF RECEPTIVE +
EXPRESSIVE LANGUAGE

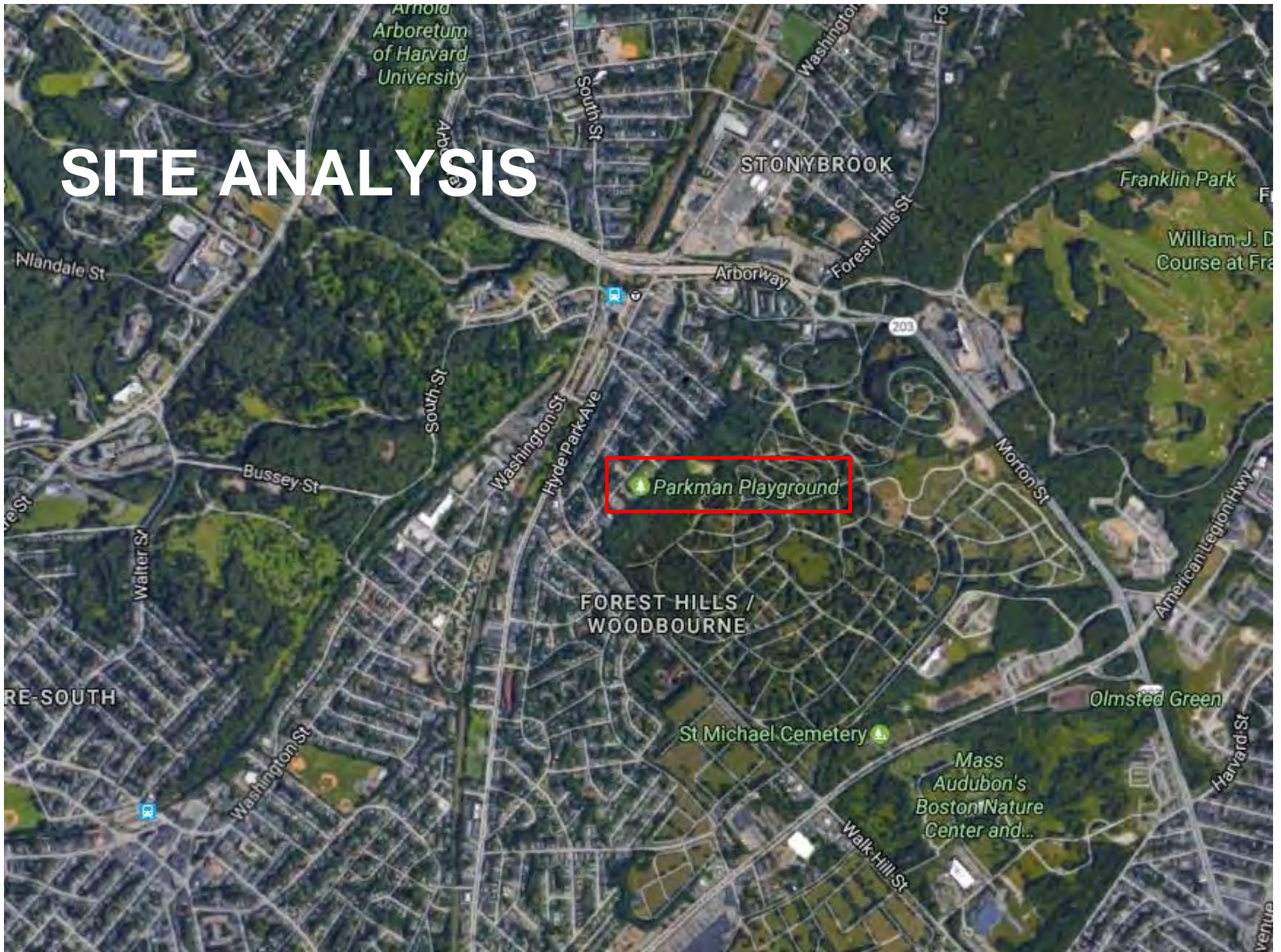


TALK TUBES, SLIDES,
THEMATIC PLAY ELEMENTS,
TRIKE TRACK, SEE SAWS

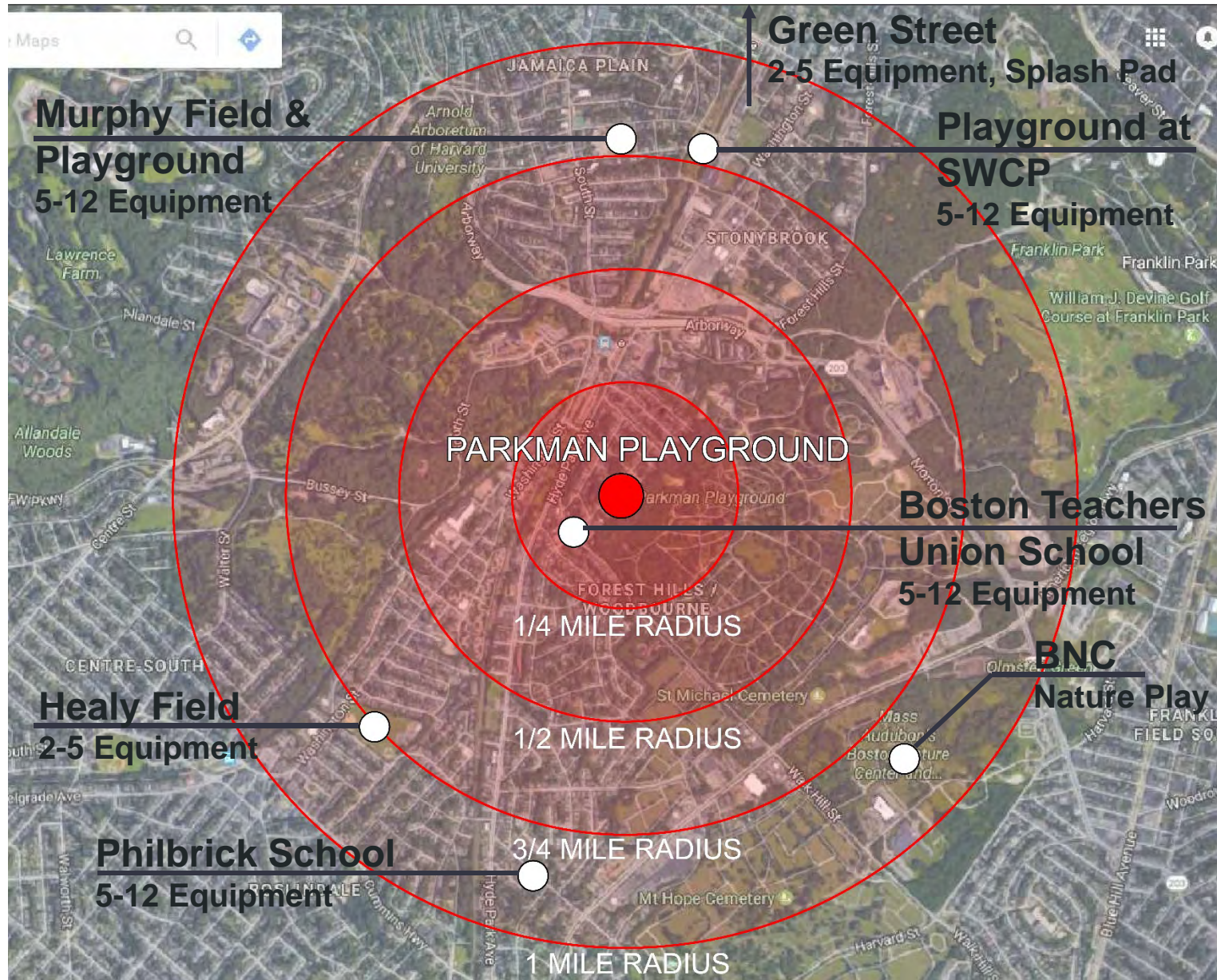
SITE ANALYSIS



SITE ANALYSIS



LOCAL PLAYGROUNDS



PARK ACCESS



PARK ACCESS



PARK ACCESS SECONDARY + ALTERNATE



Secondary Access-
AME Church Parking Lot



Alternate Access
From Barlow St

PLAYGROUND CONDITION: 5-12 Equipment



PLAYGROUND CONDITION: 2 to 5 Equipment

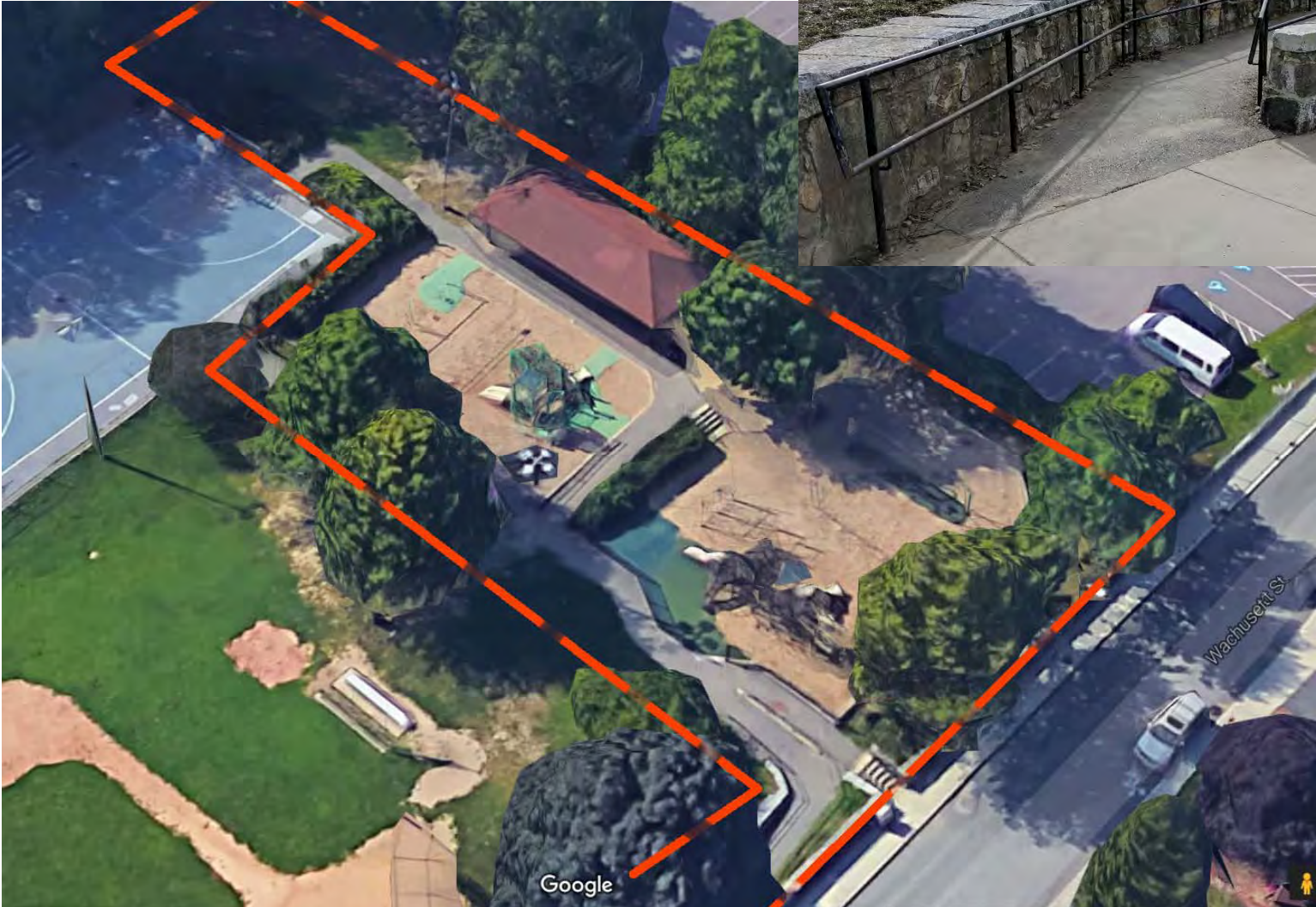


SHELTER CONDITION



ANALYSIS

Multiple Levels



ANALYSIS

Multiple Levels



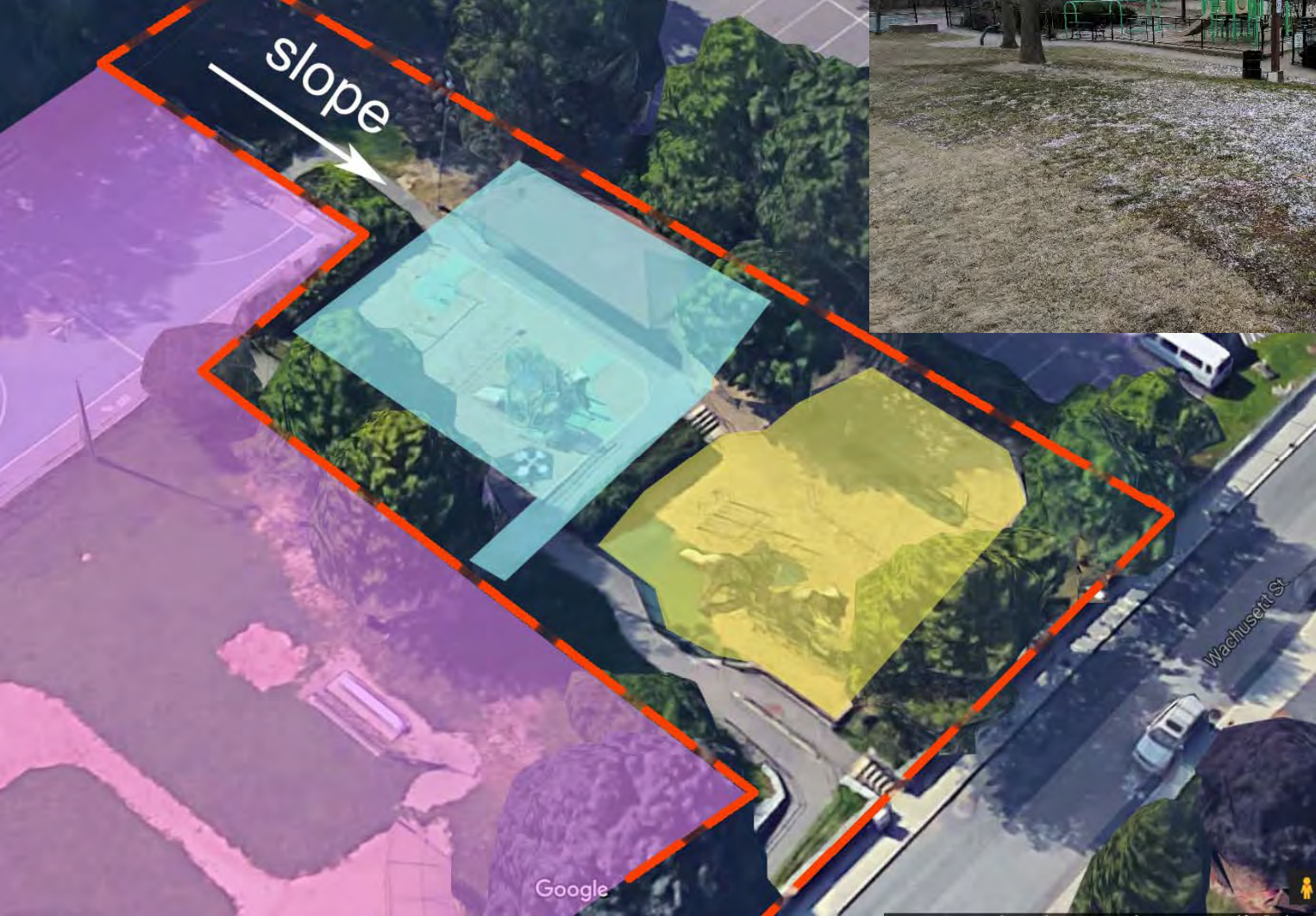
ANALYSIS

Multiple Levels



ANALYSIS

Multiple Levels



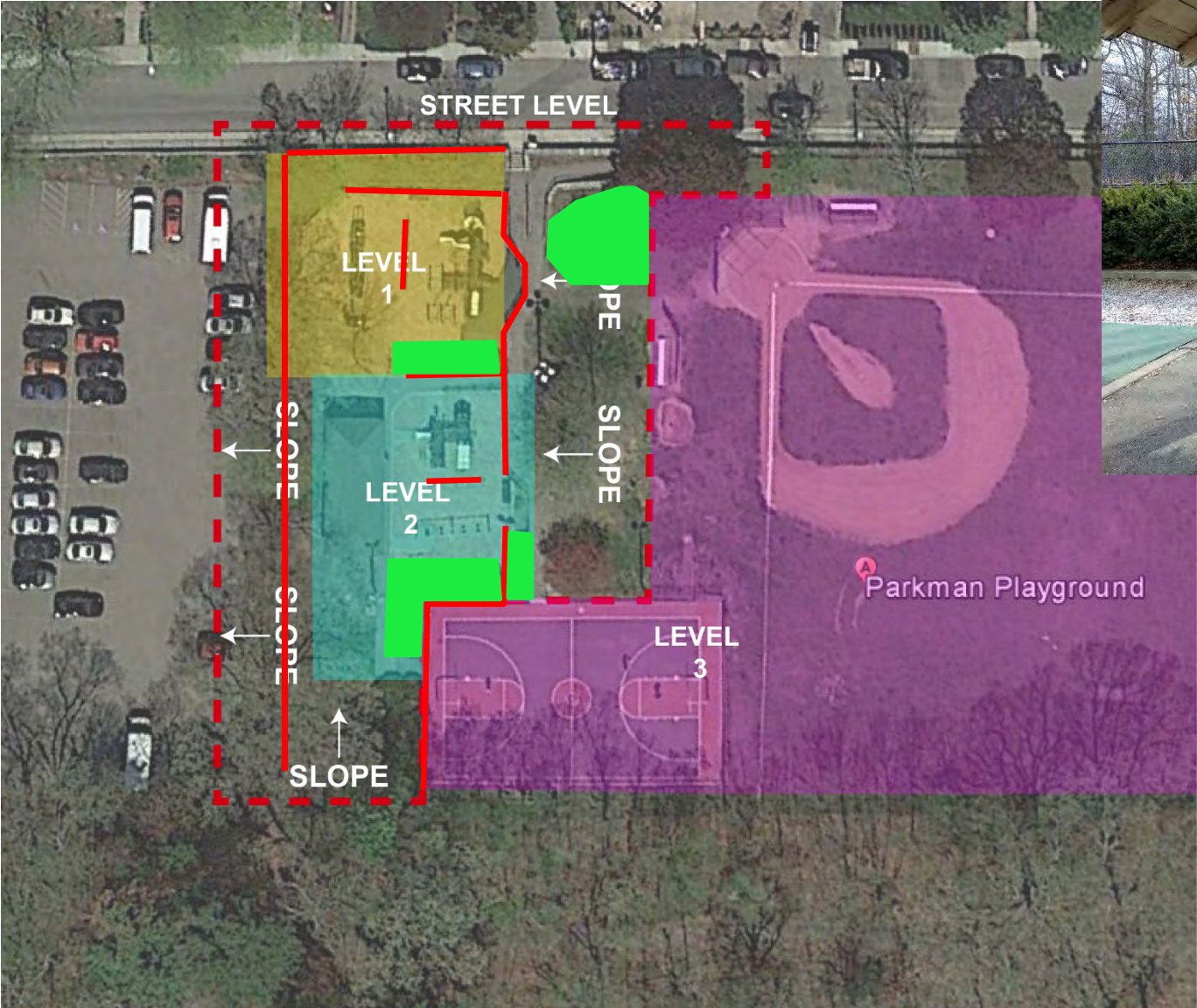
ANALYSIS

Fences and Barriers, Open Spaces



ANALYSIS

Fences and Barriers



INSPIRATION



INSPIRATION



PLAY STRUCTURES: 5-12



PLAY STRUCTURES: 2-5



PLAY STRUCTURES: Components



PLAY STRUCTURES: Swings



FURNISHING: Other Ideas



NATURE PLAY



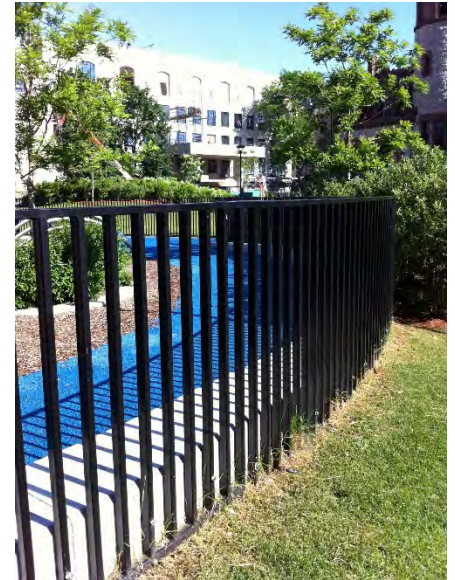
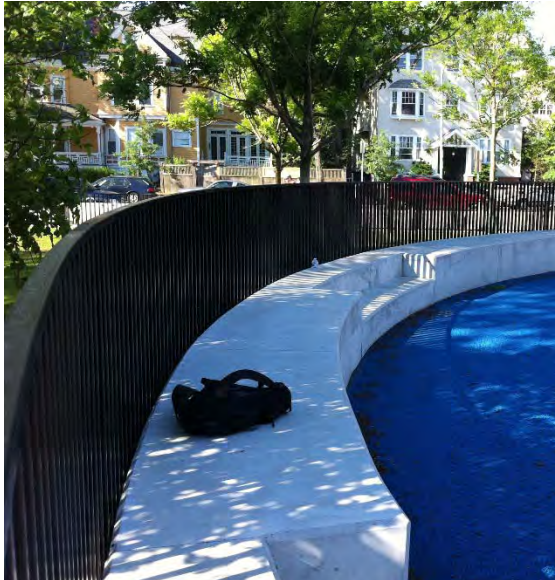
WATER PLAY



SHELTER



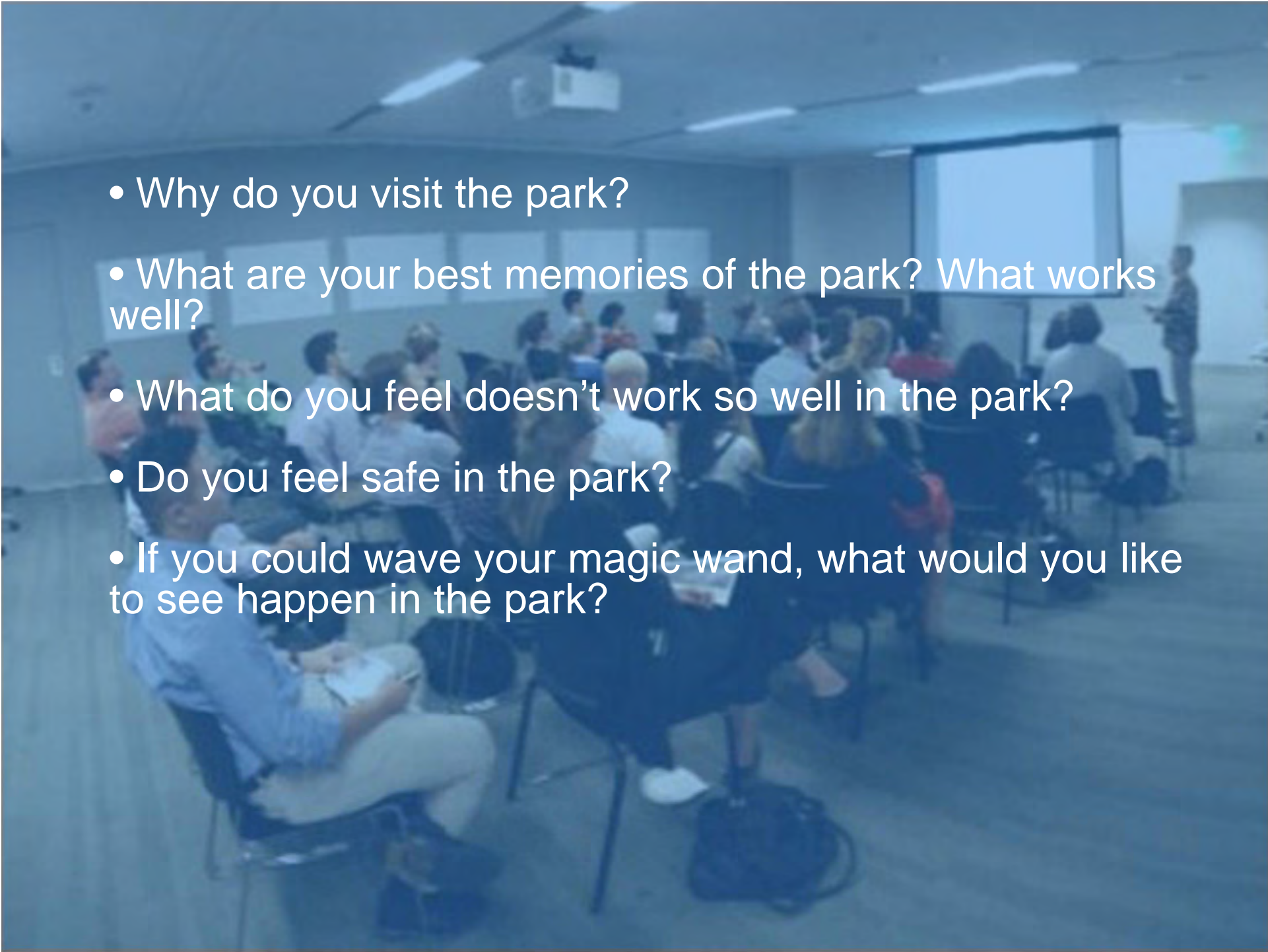
ENTRANCE AND EDGES





LISTENING & DISCUSSION

Help us build great parks by providing input on what matters to you.

- 
- Why do you visit the park?
 - What are your best memories of the park? What works well?
 - What do you feel doesn't work so well in the park?
 - Do you feel safe in the park?
 - If you could wave your magic wand, what would you like to see happen in the park?



THANK YOU!

Nathan Frazee, Project Manager
nathan.frazee@boston.gov or 617-961-3167

Marchelle Jacques-Yarde, Outreach Coordinator, External Affairs
marchelle.jacques-yarde@boston.gov or 617-961-3006

Alexandra Valdez, Office of Neighborhood Services
alexandra.valdez@boston.gov or 617-635-2185

For questions, maintenance requests or concerns regarding any of our parks
contact 311



B

March 16, 2017
Boston Parks and Recreation



TITLE

SUBTITLE

Insert photo

Caption