

# ISKCON Boston Temple Garden Concept Design



Mayor Martin J. Walsh



SOUTH ASIAN  
ARTS & CULTURAL COUNCIL



WARNER LARSON  
LANDSCAPE ARCHITECTS

# PRECEDENTS

Existing Front Gardens on Commonwealth Ave adjacent to the Temple (72 Commonwealth Ave, Boston)



Mayor Martin J. Walsh



SOUTH ASIAN  
ARTS & CULTURAL COUNCIL



WARNER LARSON  
LANDSCAPE ARCHITECTS

# Existing Temple Garden



Mayor Martin J. Walsh



SOUTH ASIAN  
ARTS & CULTURAL COUNCIL



WARNER LARSON  
LANDSCAPE ARCHITECTS

# Inspiration for the ISKCON Boston Temple Garden – The LOTUS

- The lotus flower is the icon for the ISKCON
- The lotus flower holds spiritual significance in both Hindu and Buddhist traditions

## Lotus



- **The bud of the lotus** symbolizes potential, specifically of a spiritual nature. Because the lotus rises from unclean water to blossom as a pure, uncontaminated flower, it is a symbol of purity and resurrection.
- Among its many meanings and significance, the lotus is a symbol of "spontaneous" generation, and so it also represents divine birth, spiritual development and creation itself.
- At night, the lotus flower sleeps. At sunrise, with the waking of the sun, the lotus flower emerges to life. Just as in nature. Life is born, and reborn.



Mayor Martin J. Walsh



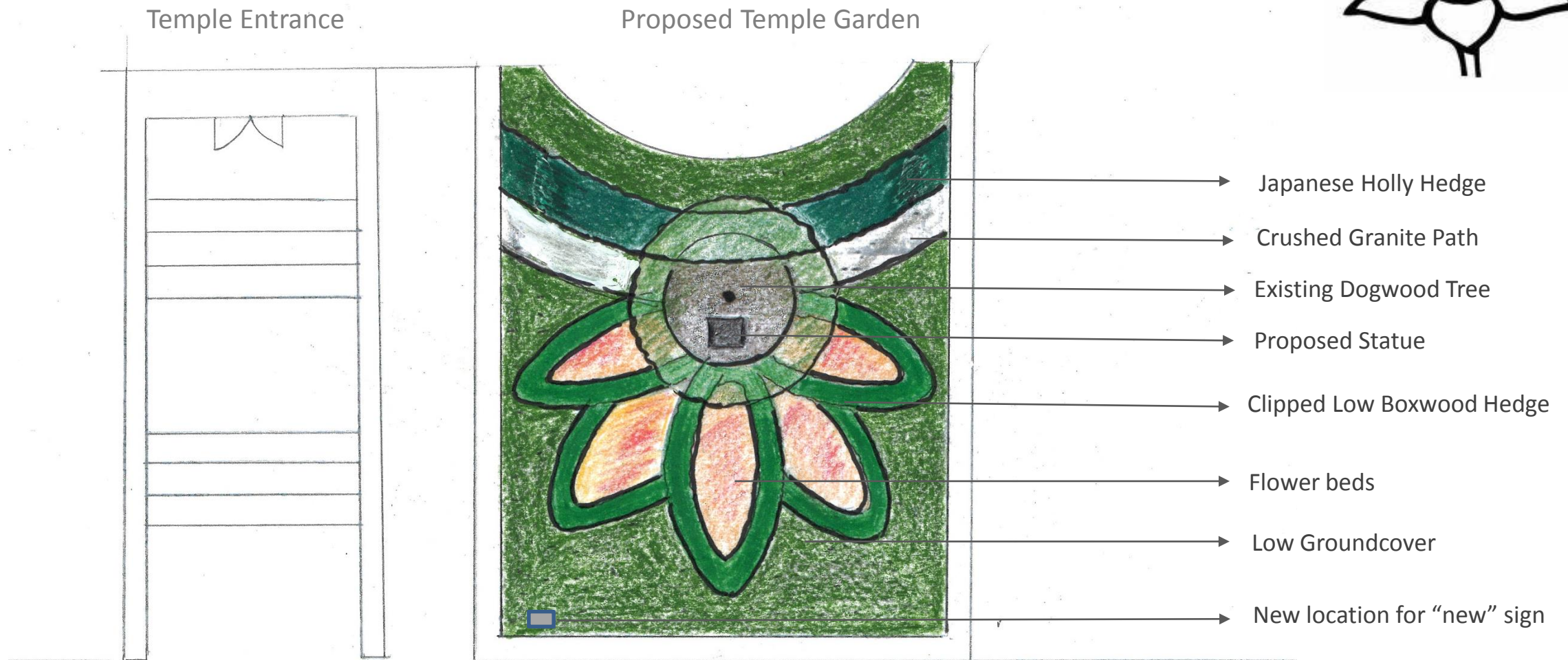
SOUTH ASIAN  
ARTS & CULTURAL COUNCIL



WARNER LARSON  
LANDSCAPE ARCHITECTS

# ISKCON Boston Temple Garden Concept Design

- Honoring the founder of ISKCON and Saint Srila Prabhupada



Commonwealth Ave



Mayor Martin J. Walsh



# ISKCON Boston Temple Garden – Landscape Style

- French ‘parterre’ garden beds influence
- Adapted to Hindu traditions with the use of garden scrolls with symbolic meaning as seen below in a Hindu temple garden in London



- Keeping with the Back Bay architecture and garden traditions



Mayor Martin J. Walsh



SOUTH ASIAN  
ARTS & CULTURAL COUNCIL



WARNER LARSON  
LANDSCAPE ARCHITECTS

# ISKCON Boston Temple Garden – Planting Inspirations

- Lotus flower petals defined by low clipped boxwood hedge surrounded by low groundcover like Pachysandra
- Petal beds planted with color (perennials or shrubs or annuals)
  - Color from flowers ‘Groundcover Rose’ OR
  - Color from foliage ‘Coral Bells’ OR
  - Seasonal annuals such as ‘Marigold’ in summer and tulips in spring
- A low ornamental border fence similar to styles shown will be installed to protect the planting from dogs.



Mayor Martin J. Walsh



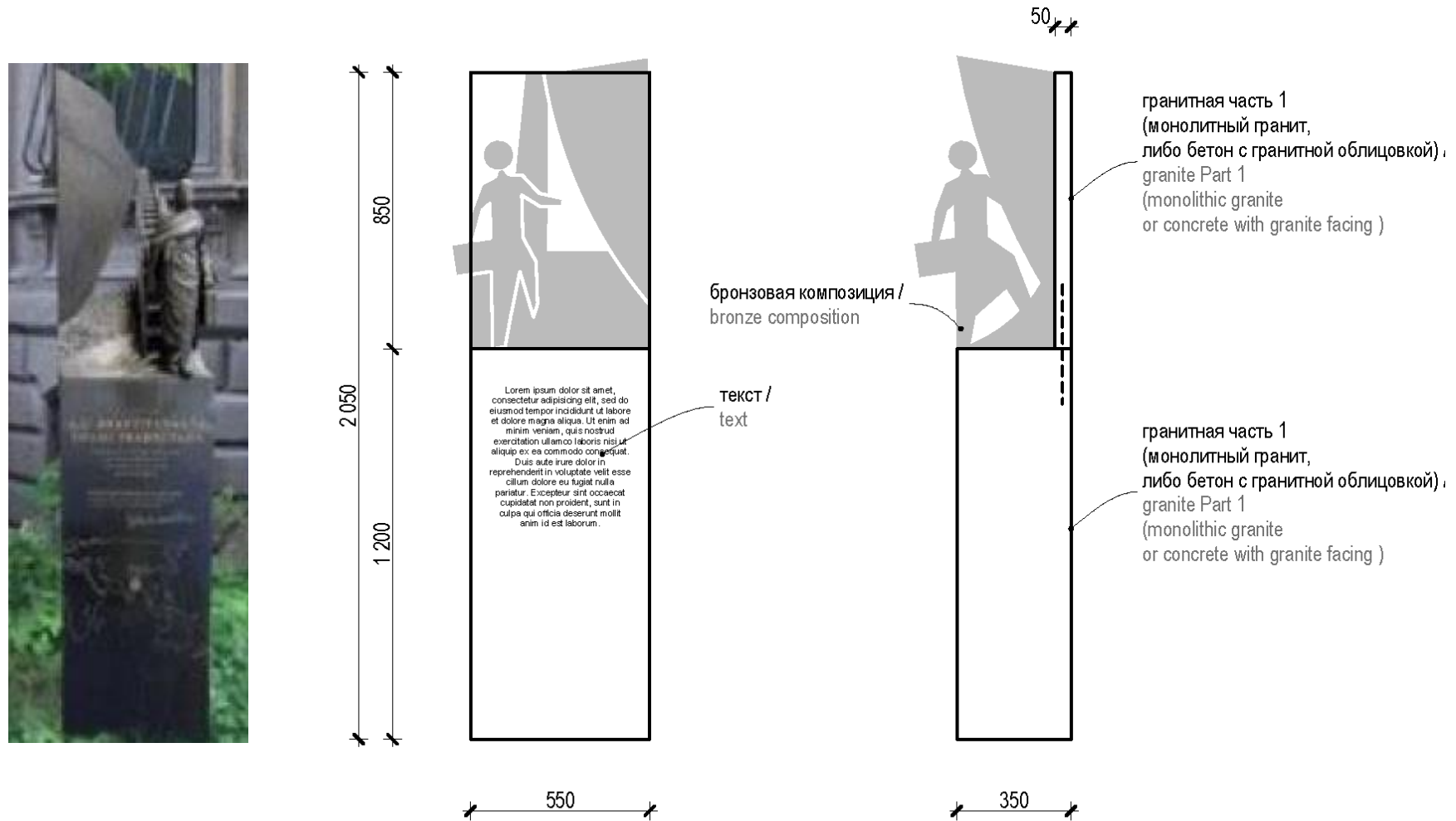
SOUTH ASIAN  
ARTS & CULTURAL COUNCIL



WARNER LARSON  
LANDSCAPE ARCHITECTS

# ISKCON Boston Temple Garden – Other considerations

- The existing dogwood tree will remain but the remaining landscape will be replaced
- The six foot bronze statue (as shown below) will be placed in front of the tree.



Mayor Martin J. Walsh

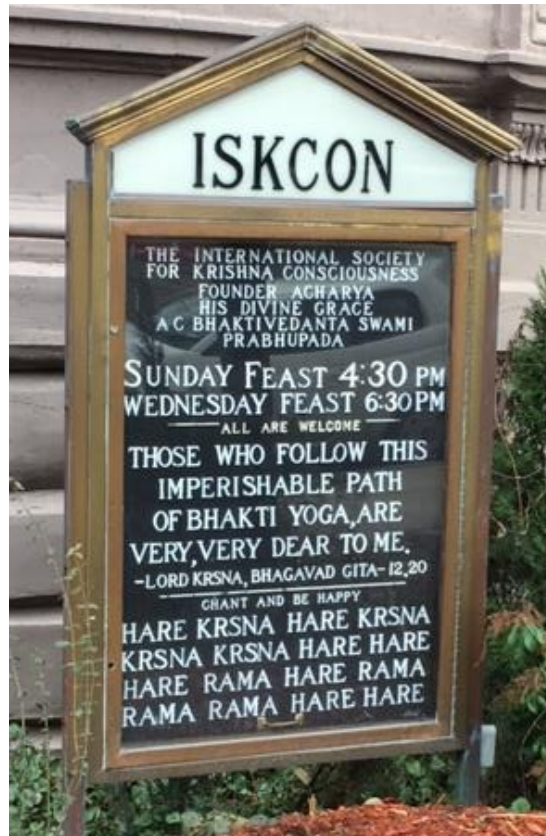




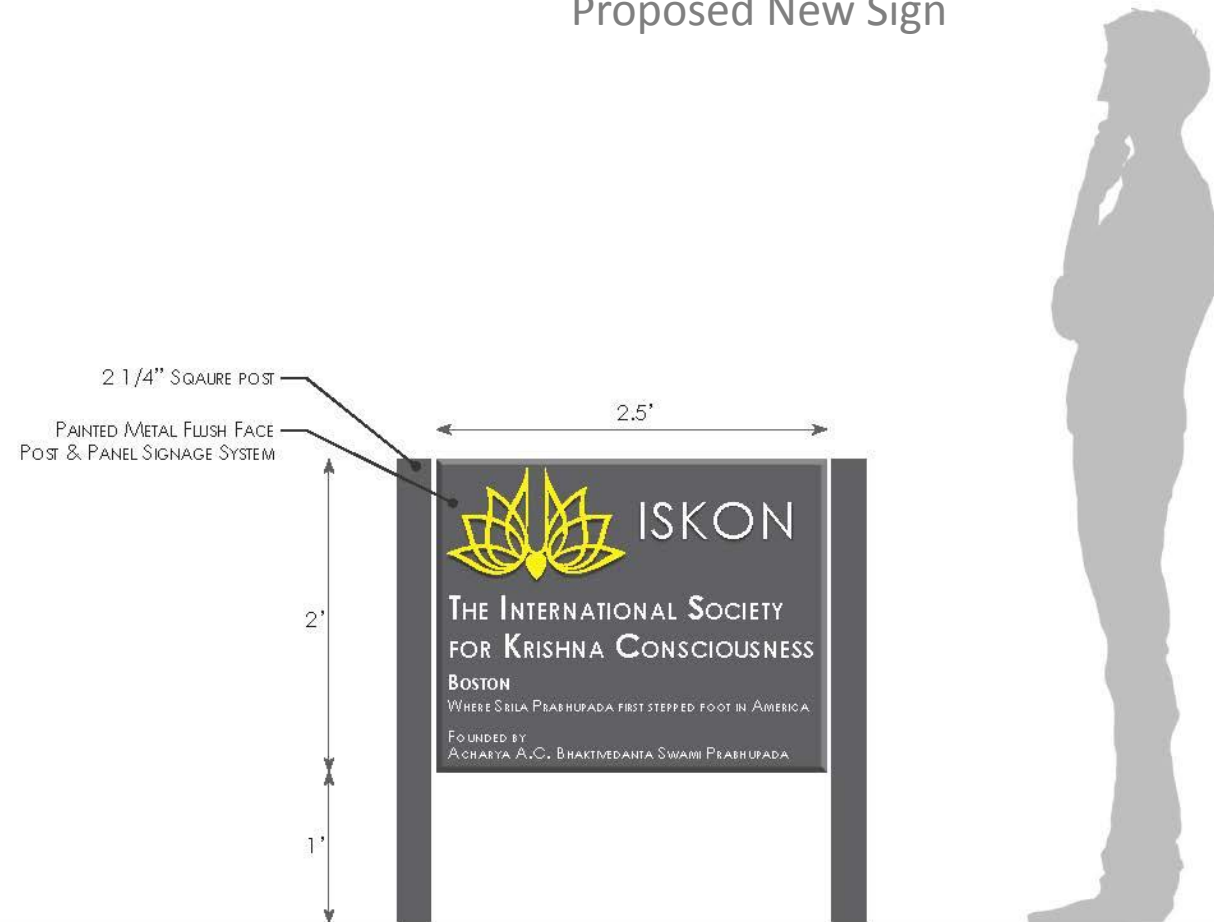
# ISKCON Boston Temple Garden – Other considerations

- The current ISKCON sign will be “replaced” with a new smaller sign ( 3 ft T x 2.5 ft W) and proposed to be placed in front left corner of the garden

Current Sign



Proposed New Sign



Mayor Martin J. Walsh

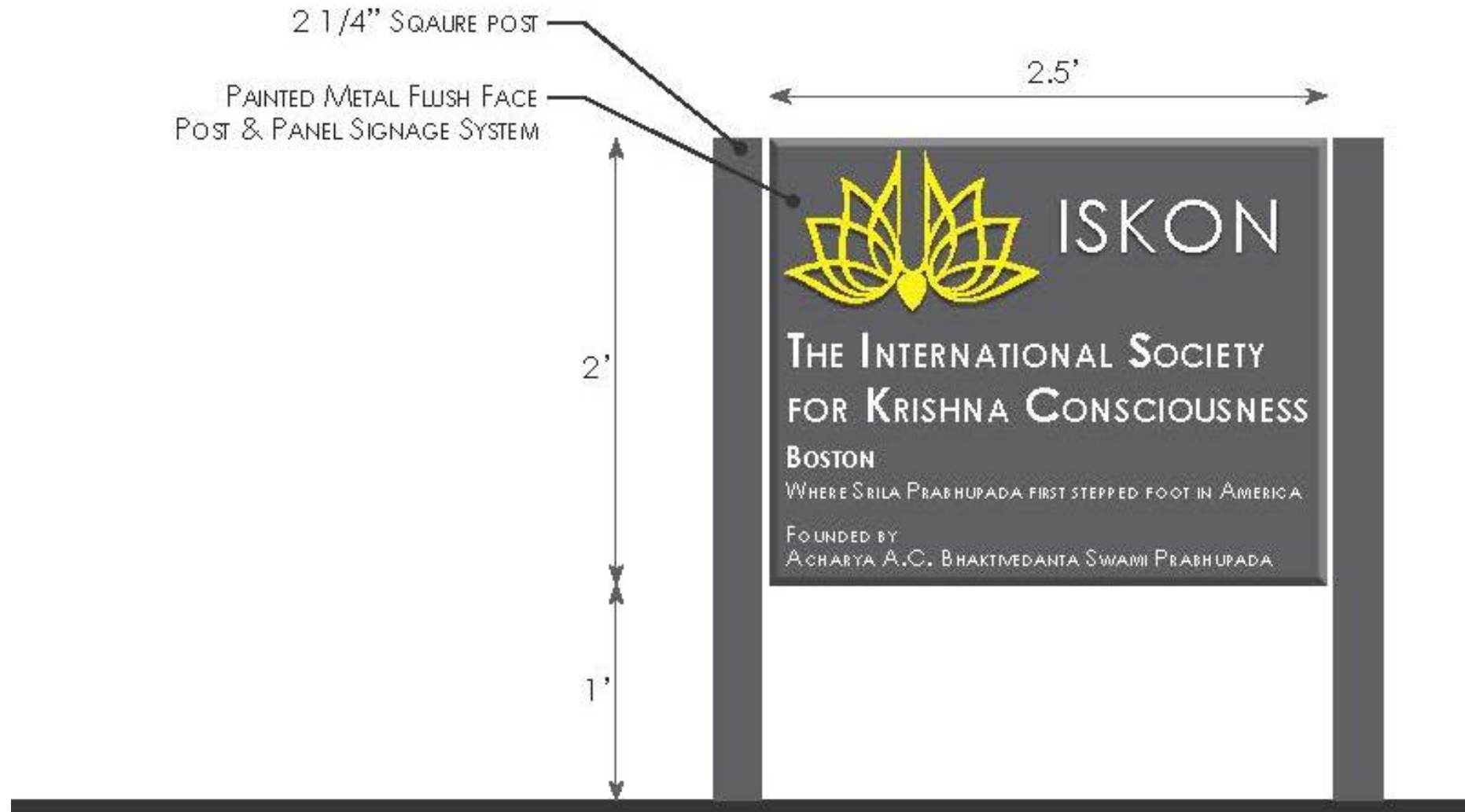


SOUTH ASIAN  
ARTS & CULTURAL COUNCIL



WARNER LARSON  
LANDSCAPE ARCHITECTS

# ISKCON Boston Temple Garden – Close up of proposed ISKON sign and statue



Mayor Martin J. Walsh



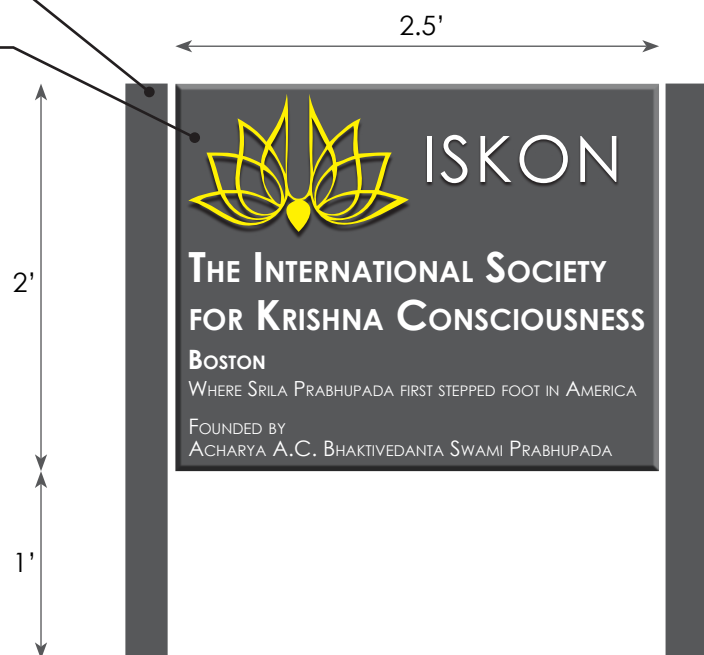
SOUTH ASIAN  
ARTS & CULTURAL COUNCIL



WARNER LARSON  
LANDSCAPE ARCHITECTS



2 1/4" SQUARE POST  
PAINTED ALUMINUM FLUSH FACE  
POST & PANEL SIGNAGE SYSTEM



Lorem ipsum dolor sit amet,  
consectetur adipisicing elit, sed do  
eiusmod tempor incididunt ut labore  
et dolore magna aliqua. Ut enim ad  
minim veniam, quis nostrud  
exercitation ullamco laboris nisi ut  
aliquip ex ea commodo consequat.  
Duis aute irure dolor in  
reprehenderit in voluptate velit esse  
cillum dolore eu fugiat nulla  
pariatur. Excepteur sint occaecat  
cupidatat non proident, sunt in  
culpa qui officia deserunt mollit  
anim id est laborum.

6.5'





70

 ISKON  
THE INTERNATIONAL SOCIETY  
FOR KRISHNA CONSCIOUSNESS  
BOSTON

1800-398-6343  
www.iskcon.org

# Next Steps

- Approval from Back Bay Neighborhood Association and Landmarks Commission
- Spring 2017 Implementation



Mayor Martin J. Walsh



SOUTH ASIAN  
ARTS & CULTURAL COUNCIL



WARNER LARSON  
LANDSCAPE ARCHITECTS

# Questions or comments!

## ISKCON Contact:

Amit Dixit

[adixit@southasianartscouncil.org](mailto:adixit@southasianartscouncil.org)

## City of Boston:

Joseph Cornish

[Joseph.Cornish@boston.gov](mailto:Joseph.Cornish@boston.gov)



Mayor Martin J. Walsh



SOUTH ASIAN  
ARTS & CULTURAL COUNCIL



WARNER LARSON  
LANDSCAPE ARCHITECTS