

sweetgreen

**399 BOYLSTON STREET
BOSTON, MA 02116**



TABLE OF CONTENTS:

PROPOSED WORK FOR SWEETGREEN TENANT SPACE:

- 1 - Site Plan
- 2 - Floor Plan
- 3 - Exterior Elevation - Front Facade
- 4 - Exterior Elevation - Rear Facade
- 5 - Exterior 3D View & Existing Photos
- 6 - Exterior 3D View & Existing Photos

399 BOYLSTON STREET SIGNAGE GUIDELINES - 01/06/17

- 7 - Tenant Signage Typology
- 8 - Tenant Signage Typology - Elevations
- 9 - Signage Type C - Single Entry - Requirements & 3D View
- 10 - Signage Type C - Single Entry - Elevation & Detail

SHOP DRAWINGS

- Channel Letter Shop Drawings
- Neon Seasons Shop Drawings

CONTACTS:

BJA ARCHITECTS

Megan Baxter
142 Crescent Street
Brockton, MA 02302
508-583-5603 ext 315

PFG ADVISORS

Paul F. Gibbs, Permit Expediter
P.O. Box 374
Sandwich, MA 02563
508-942-5585



142 Crescent Street
Brockton, MA 2302
tel: 508.583.5603
fax: 508.584.2914
www.bkaarchts.com

sweetgreen

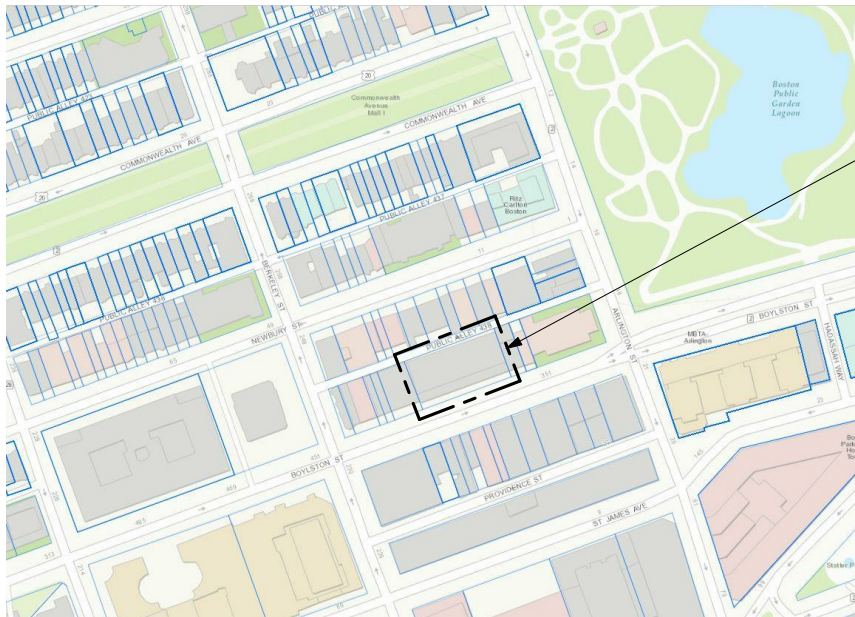
BOS17 - 399 BOYLSTON ST

399 Boylston Street
Boston, MA 02116

COVER SHEET

02/10/17
BJA #216306

BBAC - 0



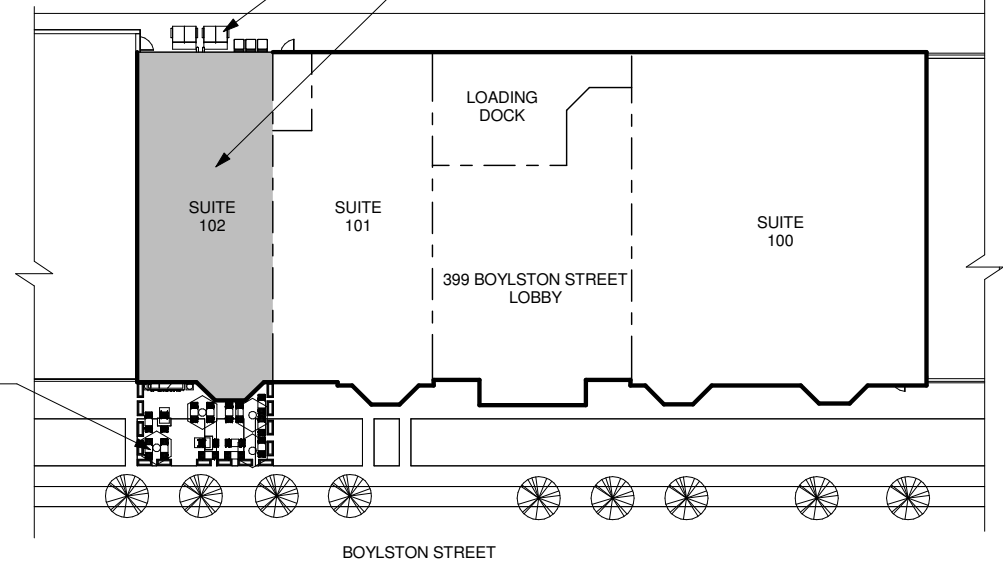
LOCUS MAP

399 BOYLSTON STREET

PROPOSED DUMPSTERS FOR SWEETGREEN'S USE; REFER TO PLAN ON SHEET #2

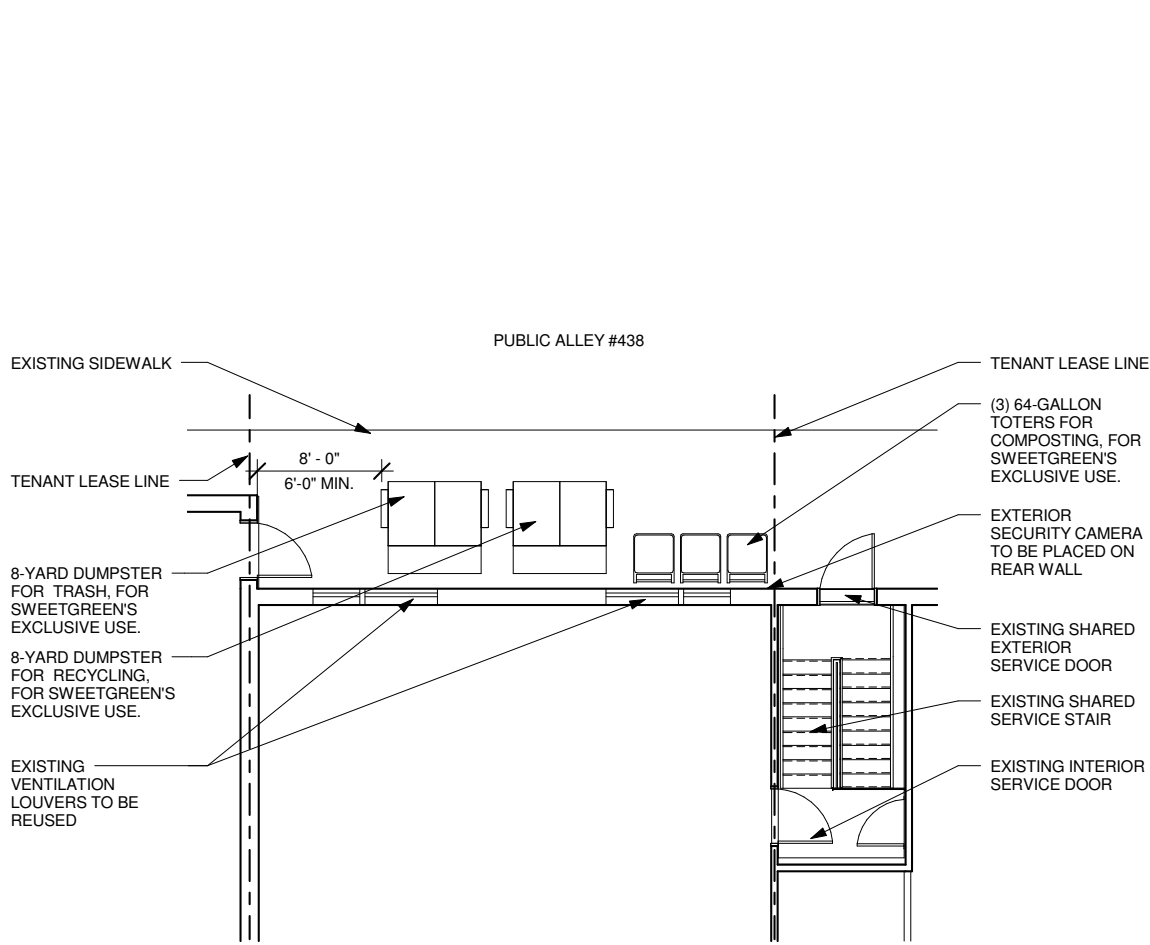
PROPOSED SWEETGREEN LOCATION

PUBLIC ALLEY #438

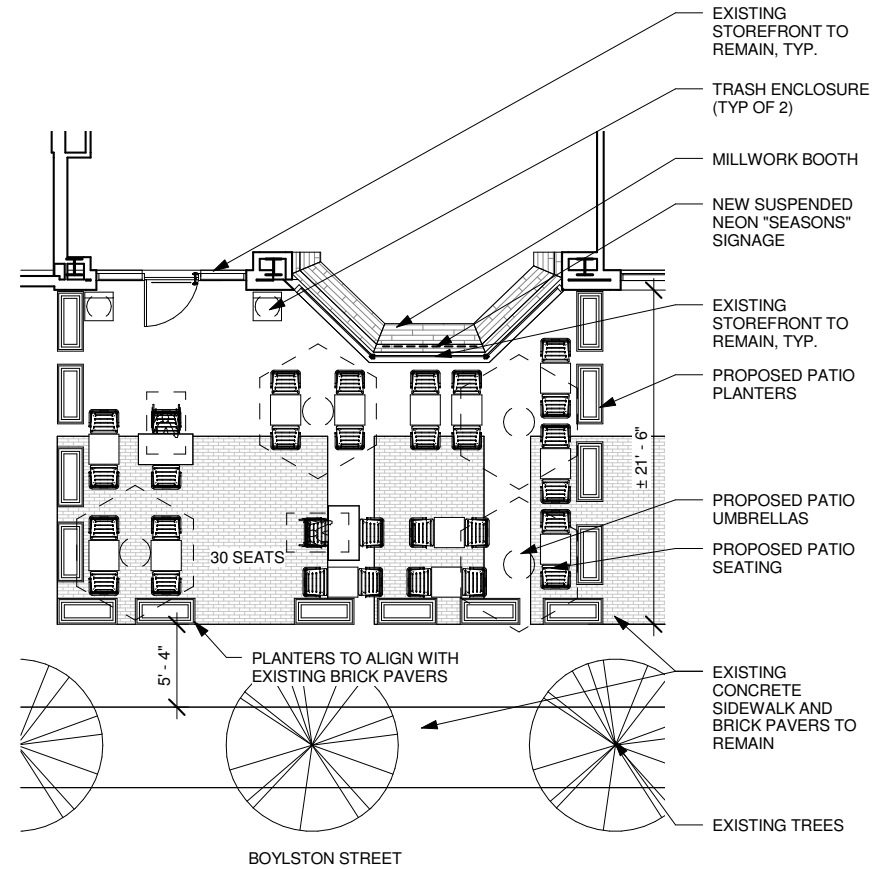


PROPOSED PATIO AREA. REFER TO PATIO PLAN ON SHEET #2

① SITE PLAN
1/32" = 1'-0"



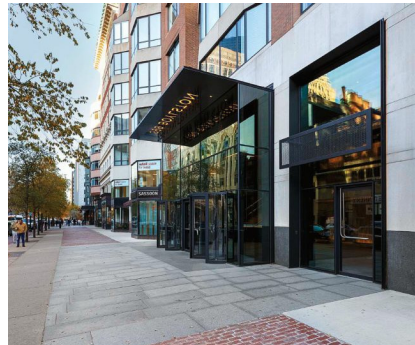
② FLOOR PLAN - REAR
1/8" = 1'-0"



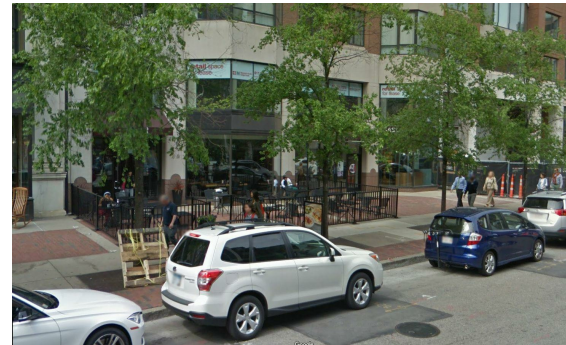
① FLOOR PLAN - FRONT
1/8" = 1'-0"



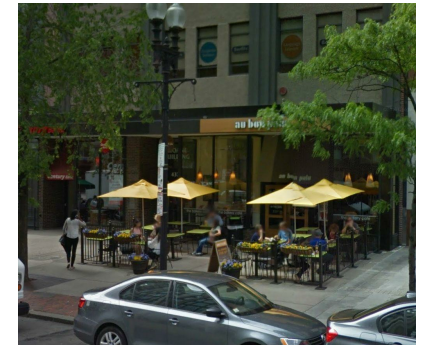
EXISTING STOREFRONT



EXISTING FACADE - MESH PANEL



FORMER TENANT PATIO - COSI



ADJACENT TENANT PATIO - AU BON PAIN

INTERNALLY ILLUMINATED WHITE CHANNEL LETTERS, TO COMPLY WITH APPROVED "399 BOYLSTON STREET SIGNAGE GUIDELINES" REFER TO SIGNAGE SHOPS FOR ADDITIONAL INFORMATION

BY LANDLORD/EXISTING BLACK PAINTED STEEL MESH ON BLACK PAINTED STEEL ARMATURE.

EXISTING STOREFRONT TO REMAIN

WHITE WINDOW VINYL WITH "SWEETGREEN" LOGO

EXISTING DOOR TO REMAIN; NEW CUSTOM WOOD AXE HANDLE TO BE INSTALLED



EXISTING STOREFRONT SIGN BAND TO REMAIN, TYP.

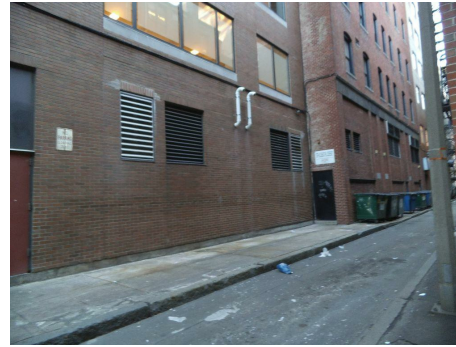
INTERIOR NEON "SEASONS" SIGNAGE SUSPENDED FROM INTERIOR SOFFIT

EXISTING STOREFRONT BAY WINDOW TO REMAIN, TYP.

WOOD MILLWORK BOOTH SEATING VISIBLE THROUGH GLAZING. T.O. BOOTH TO ALIGN WITH FACADE MATERIAL CHANGE

EXISTING STONE BASE TO REMAIN, TYP.

① EXTERIOR ELEVATION - FRONT
1/4" = 1'-0"



EXISTING PHOTOS





EXISTING EXTERIOR



EXISTING EXTERIOR



PROPOSED EXTERIOR



142 Crescent Street
 Brockton, MA 2302
 tel: 508.583.5603
 fax: 508.584.2914
 www.bkaarchts.com

sweetgreen

BOS17 - 399 BOYLSTON ST

399 Boylston Street
 Boston, MA 02116

EXTERIOR VIEWS

02/10/17
 BKA #216306

BBAC - 5



EXISTING EXTERIOR



EXISTING EXTERIOR



PROPOSED EXTERIOR

399 Boylston Street Signage Guidelines
01/06/2017
 Equity Office - CBT



Tenant Signage Typology

- A Wing Door Tenant Signage
 (Existing to be modified)
- B Multi-Bay Tenant Signage
- C Single-Bay Tenant Signage
- D Bay Window Tenant Signage
 (Existing to be modified)

399 Boylston Street Signage Guidelines
01/06/2017
 Equity Office - CBT



399 Boylston Street Signage Guidelines

01/06/2017
Equity Office - CBT

Signage Type C- Single Entry

Dimensions

Panel Dimension
2'-11" h X 9'-7" w
Mesh Dimension
2'-5" h X 9'-1" w

Margin Requirements

0'-6" Margin from top and bottom of mesh edge
0'-9" Margin from left and right of mesh edge

Construction & Finish

- Black painted steel mesh in black painted metal frame
- Internally illuminated channel-cut characters of any color to be mounted on mesh signage panel
- All electrical connections and means of mounting characters to be hidden from public view

Signage Parameters

- Character height not to exceed 1'-2"
- Characters not to exceed 2" depth from mesh with 3/4" spacer
- Signage must not exceed margin requirements
- Signage must be centered on metal mesh



Signage Type C- Single Entry

399 Boylston Street Signage Guidelines 01/06/2017 Equity Office - CBT

