



**Pharmacy = Upper Band
at old Bangkok Bistro turned
SaPa & now new Jade Monkey**

**Starbucks facade faux re-creation of
neighboring facades previously
requested by neighborhood/Board.
Blade sign installed at upper parapet**

**Old Boloco - Recently reviewed
for new GNC .. graphics on upper
band + on projecting awning.**

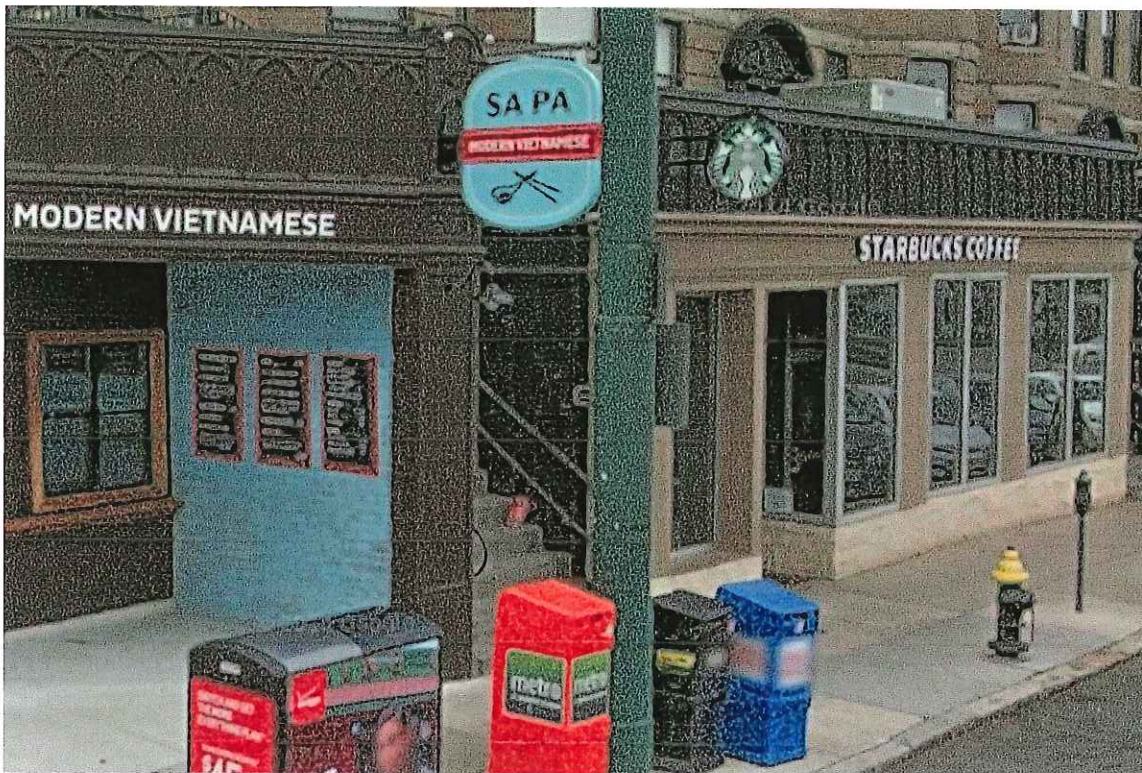
1952 Beacon Street - Exterior Niche Evolution

Jade Monkey Renovations - 2016



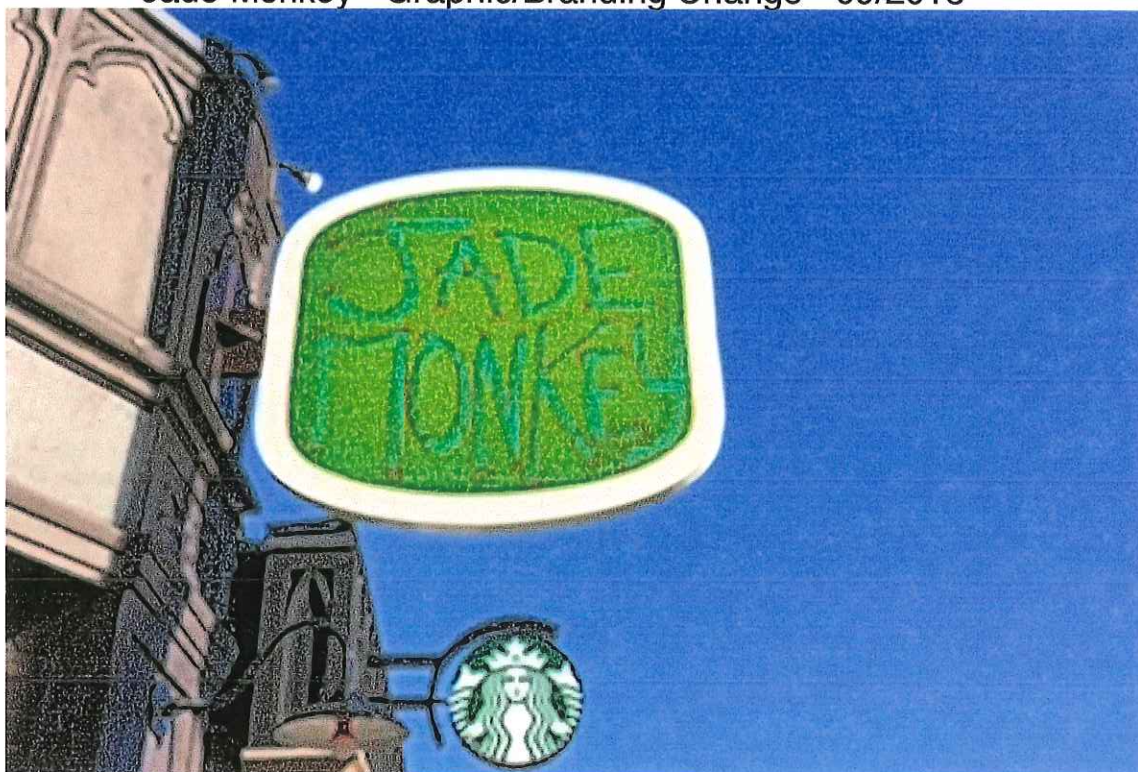
1. REMOVED MENUS & PAINT FROM BRICK
2. REPLACED TAKE-OUT WINDOWS WITH DIVIDED LIGHT ANTIQUE WINDOW
3. RAISED WOOD PLATFORM & RAILING FOR OUTDOOR SEATING

SaPa - Opened in 2014

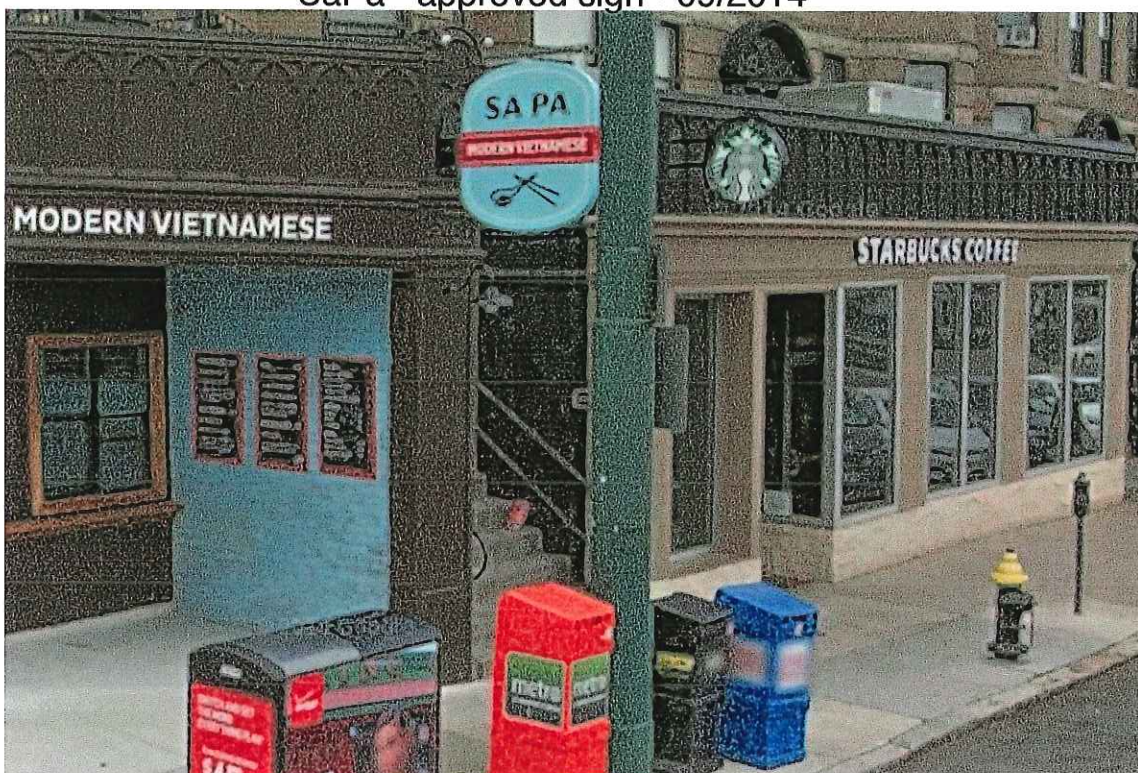


1952 Beacon Street - Blade Sign Graphic Change

Jade Monkey - Graphic/Branding Change - 09/2016



SaPa - approved sign - 09/2014

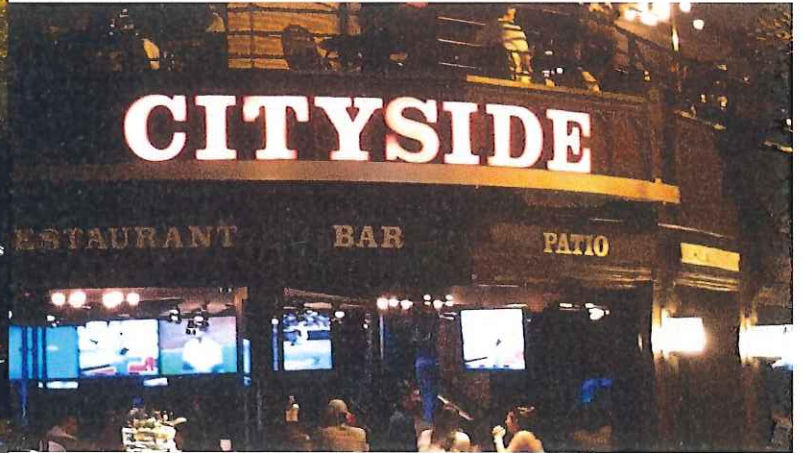


Contextural Upper Parapet Sign Photos

around 1940 to 1936 Beacon Street
& around corner towards Chestnut Hill Ave.



1952 Beacon Street 05/15/2015



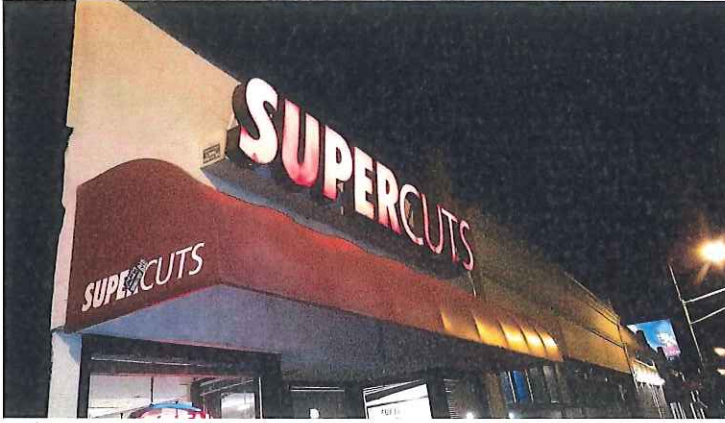
Upper Parapet Sign - CitySide 09/15/16



Upper Parapet Sign - The Real Deal 09/15/16



CVS Parapet Sign 09/15/16



Upper Parapet Sign - Super Cuts 09/15/16

Upper Parapet Sign - Chipotle 09/15/16



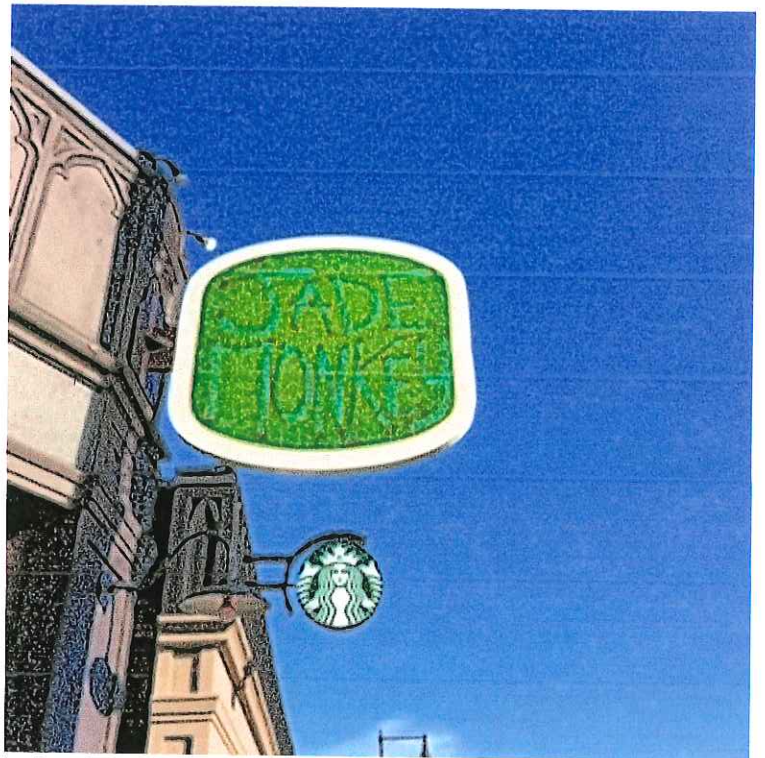
Upper Parapet Sign - Tedeschi 09/15/16

Contextural Blade Sign Photos
around 1940 to 1936 Beacon Street
& around corner towards Chestnut Hill Ave.



Starbucks Blade Sign 09/15/2016

Jade Monkey Blade Sign 09/15/16



Real Deal Blade Sign 09/15/2016

Blade Sign - 1952 Beacon Street



Blade Light - Starbucks



Blade Sign, 7Eleven



Blade Sign - City Realty Group



Blade Sign - Fins, 354 Chestnut Hill Ave

1952 Beacon Street Signage Evolution

2013 to Present



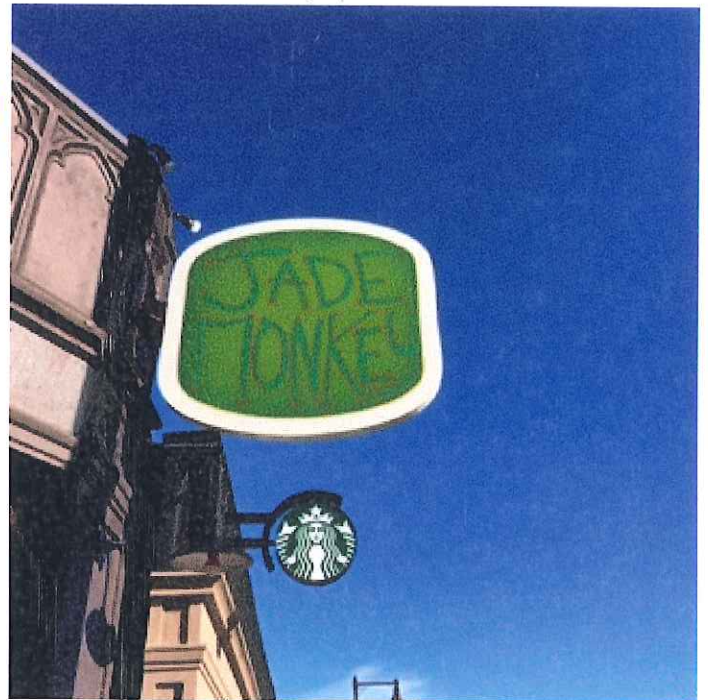
Blade Sign - 1952 Beacon Street 08/13/13



1952 Beacon Street 11/13/2013



1952 Beacon Street 05/15/2015



Blade Sign - 1952 Beacon Street



1952 Beacon Street 09/2014

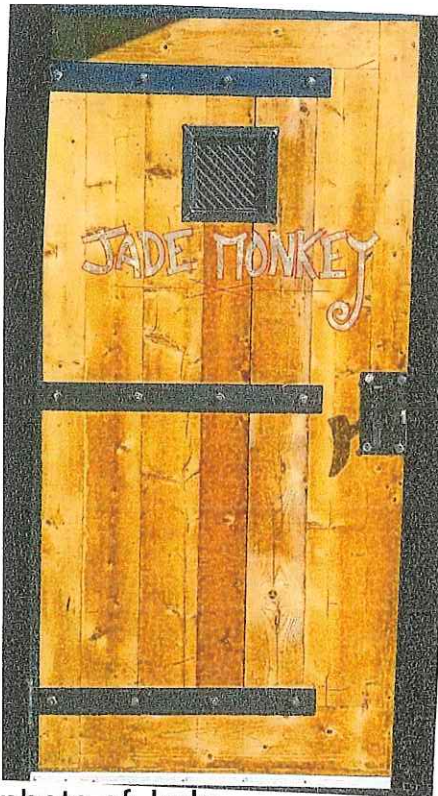


Blade Sign & Niche 09/2014



Upper Parapet 1940 Beacon 09/2014

1952 Beacon Street Front Door Change

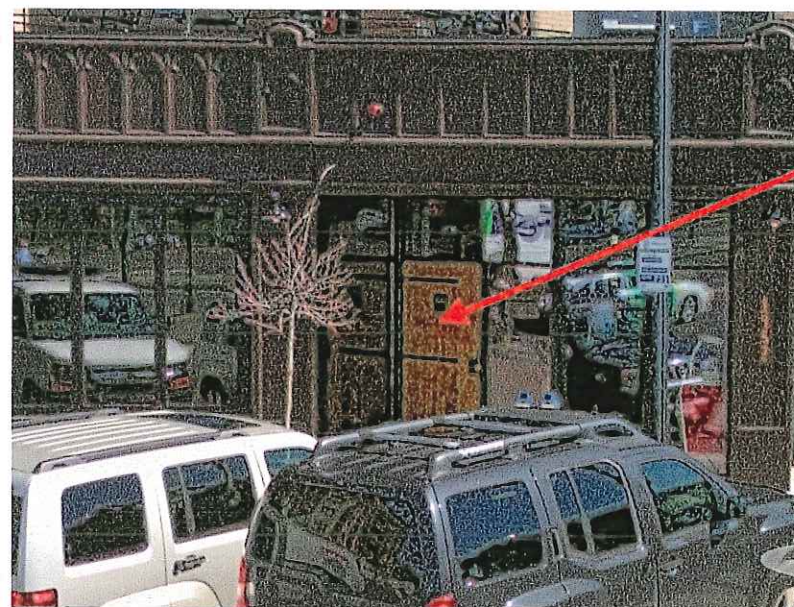


Detailed photo of Jade Monkey Door - 09/2016

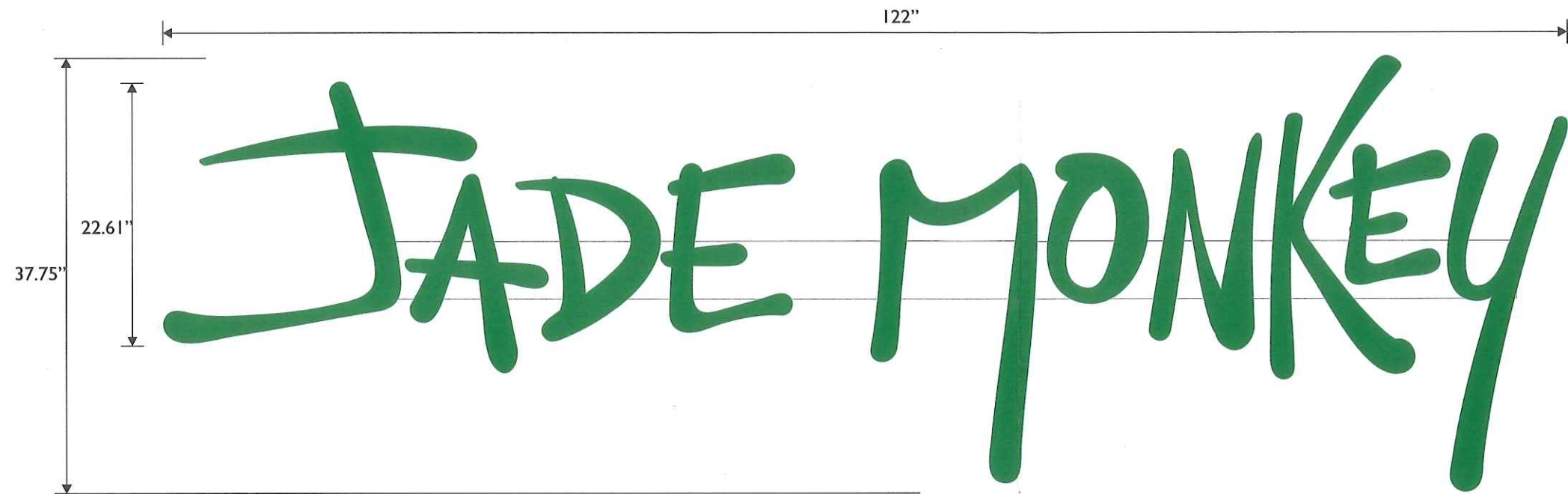
SaPa - Kawneer 190 Dark Anodized Bronze Door to match storefront - 09/2014



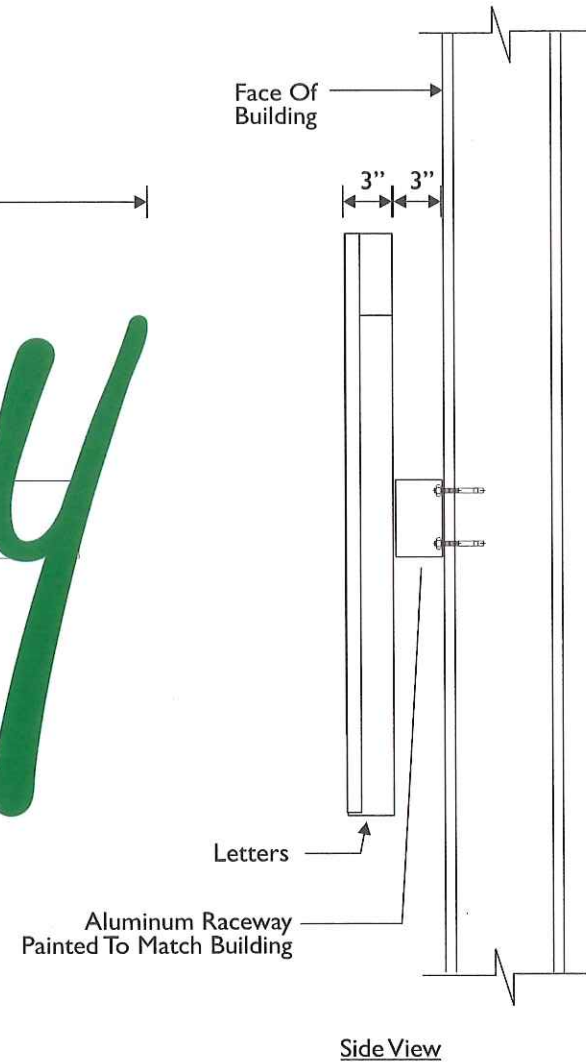
Remove Jade Monkey wood door and re-install SaPa's approved Kawneer 190 door. Anodized Dark Bronze to match existing storefront systems.



Jade Monkey - 09/2016



Front View



Side View

Internally Illuminated Channel Letters
Scale: 1" = 1'-0"

- .040 White Aluminum Returns 4" Deep
- .187" White Acrylic Faces With 3M Trans "Bright Jade Green" Vinyl Overlay
- 1" White Trimcap
- Internal Illumination By White LEDs
- 120V 60W Power Supply
- Fabricated Aluminum Raceway -Painted To Match Building (Exact Color TBD)



Existing



Proposed

Customer



Location:

1952 Beacon St
Brighton, MA

Job Description:

Illuminated
Storefront Sign

Date

06.07.16

Revisions

This is an original copyright drawing created by and owned by Batten Bros., Inc. It is submitted for your personal use in connection with a project being planned for you by Batten Bros. It is not to be shown to anyone outside your organization, nor is it to be used, reproduced, copied or exhibited in any fashion.

Scale

Noted

File Name

Sketch #:

Account

J. Sarra

Since 1946



Batten Bros.
Signs & Awnings

893 Main Street
Wakefield, MA 01880

781.245.4800

BEFORE FEBRUARY 2015 – 1952 Beacon Street



BEFORE FEBRUARY 2015 – 1952 Beacon Street



AFTER MARCH 2017 – 1952 Beacon Street



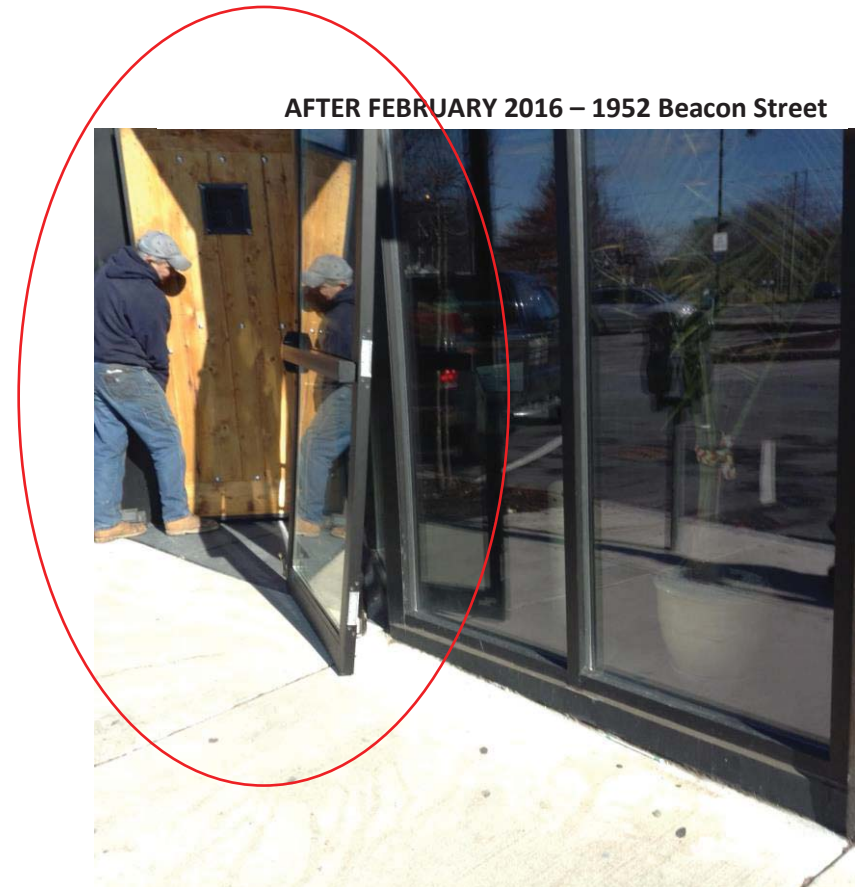
BEFORE FEBRUARY 2015 – 1952 Beacon Street



BEFORE FEBRUARY 2015 – 1952 Beacon Street



AFTER FEBRUARY 2016 – 1952 Beacon Street



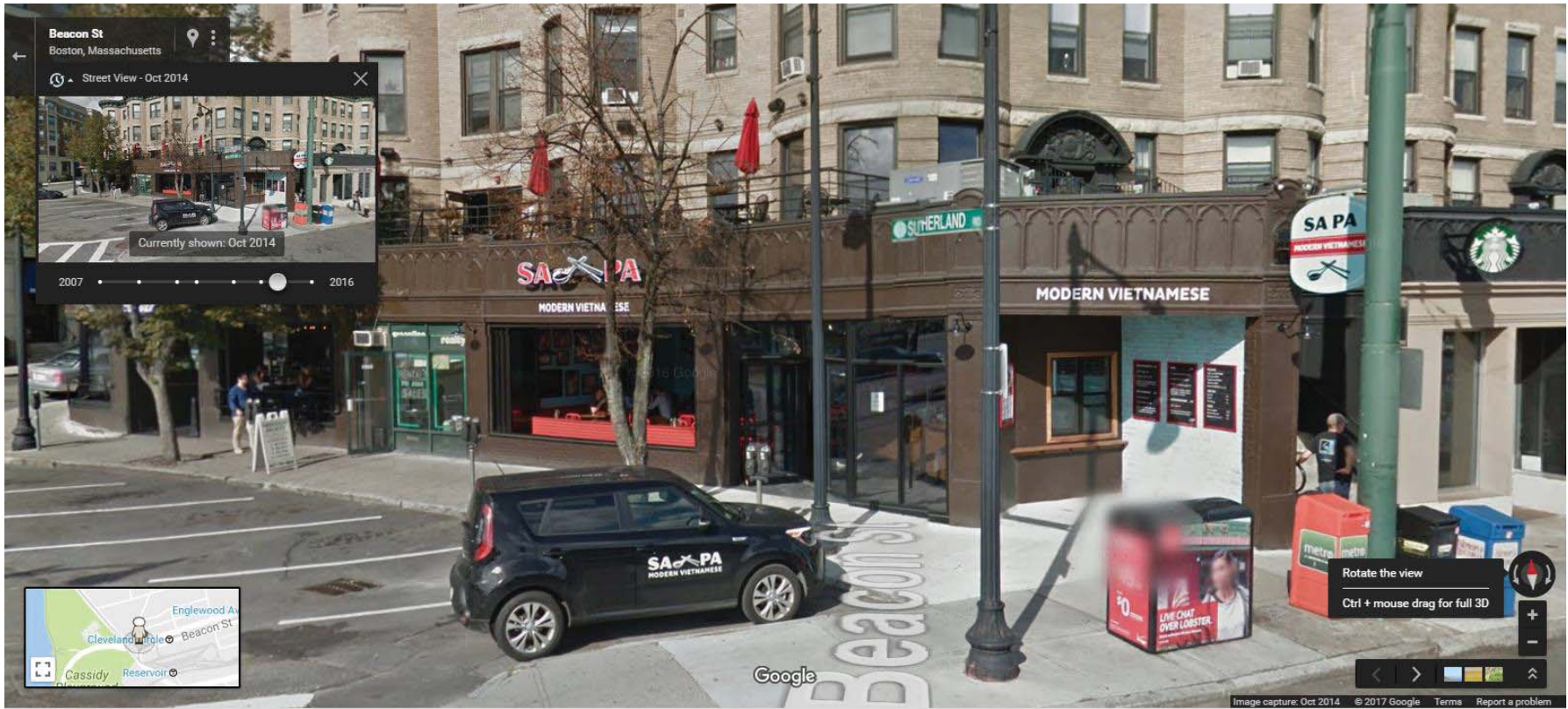
AFTER MARCH 2017 – 1956 Beacon Street



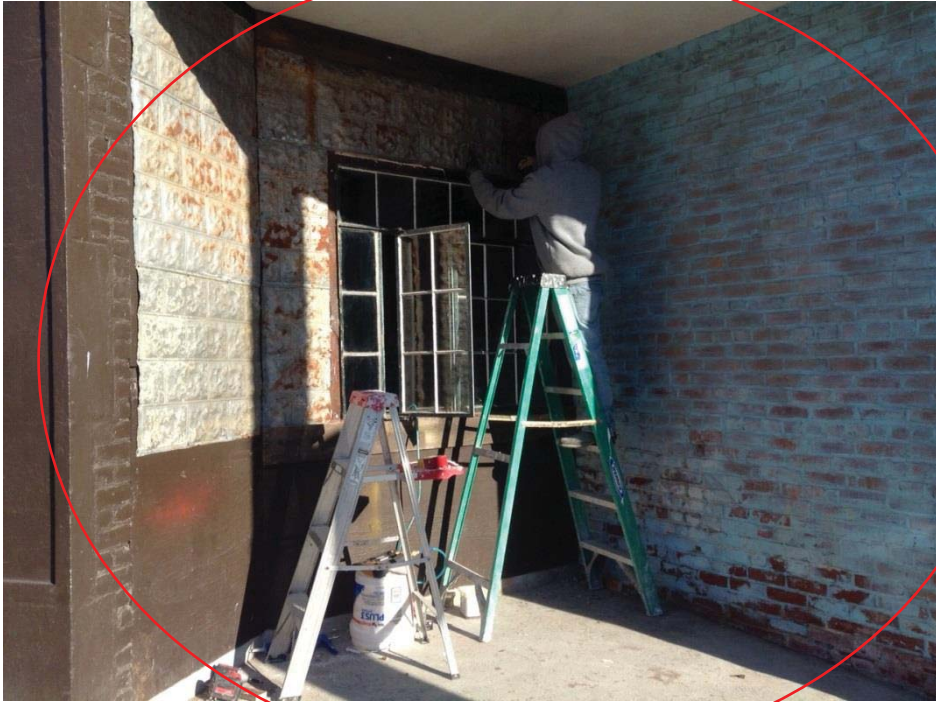
BEFORE FEBRUARY 2015 – 1952 Beacon Street



BEFORE OCTOBER 2014 – 1952 Beacon Street



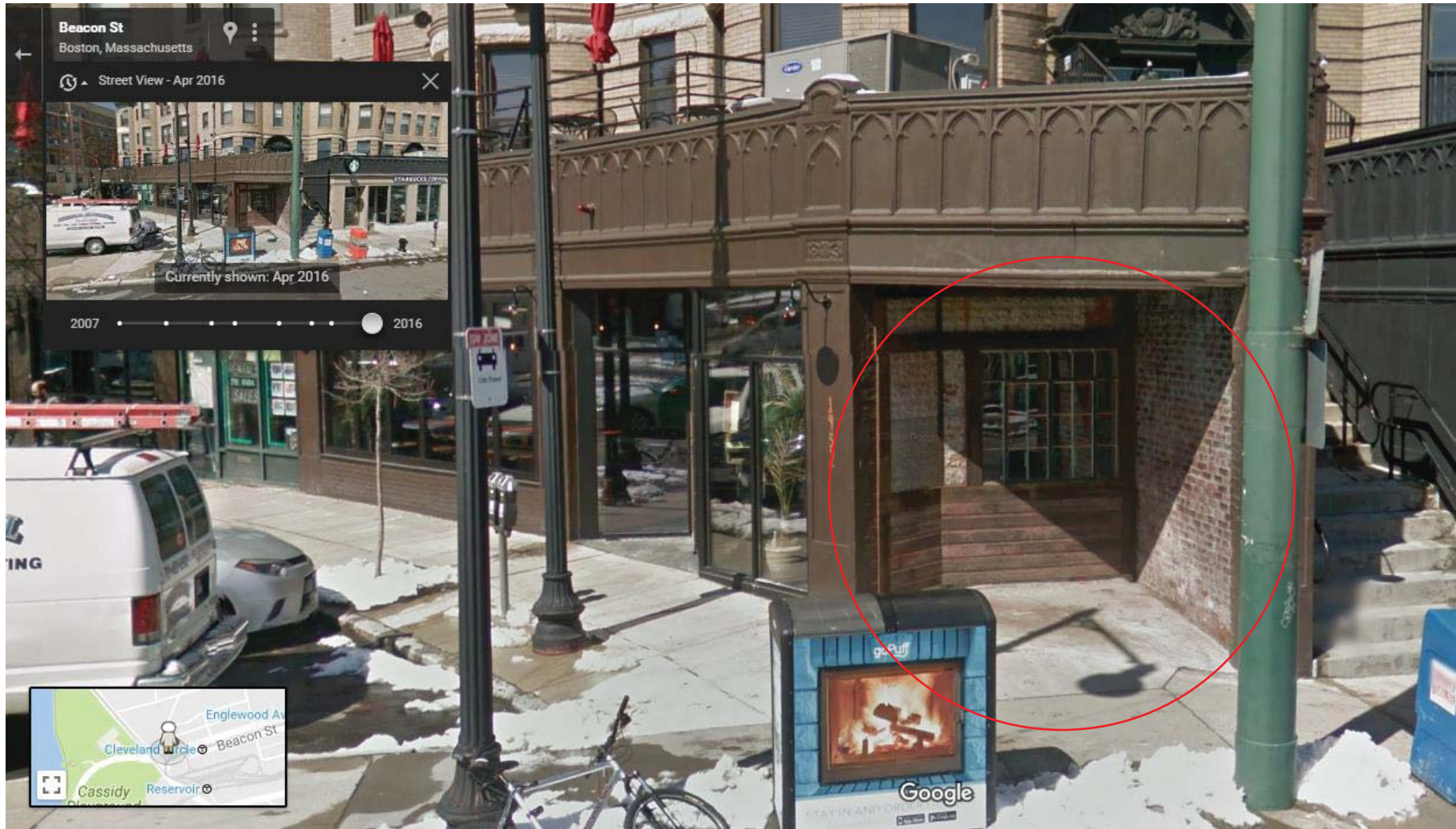
AFTER FEBRUARY 2016 – 1952 Beacon Street



AFTER MARCH 2017 – 1952 Beacon Street



AFTER APRIL 2016 – 1952 Beacon Street



AFTER FEBRUARY 2017 – 1952 Beacon Street

20160720_142736.jpg

2/9/17, 4:48 PM

