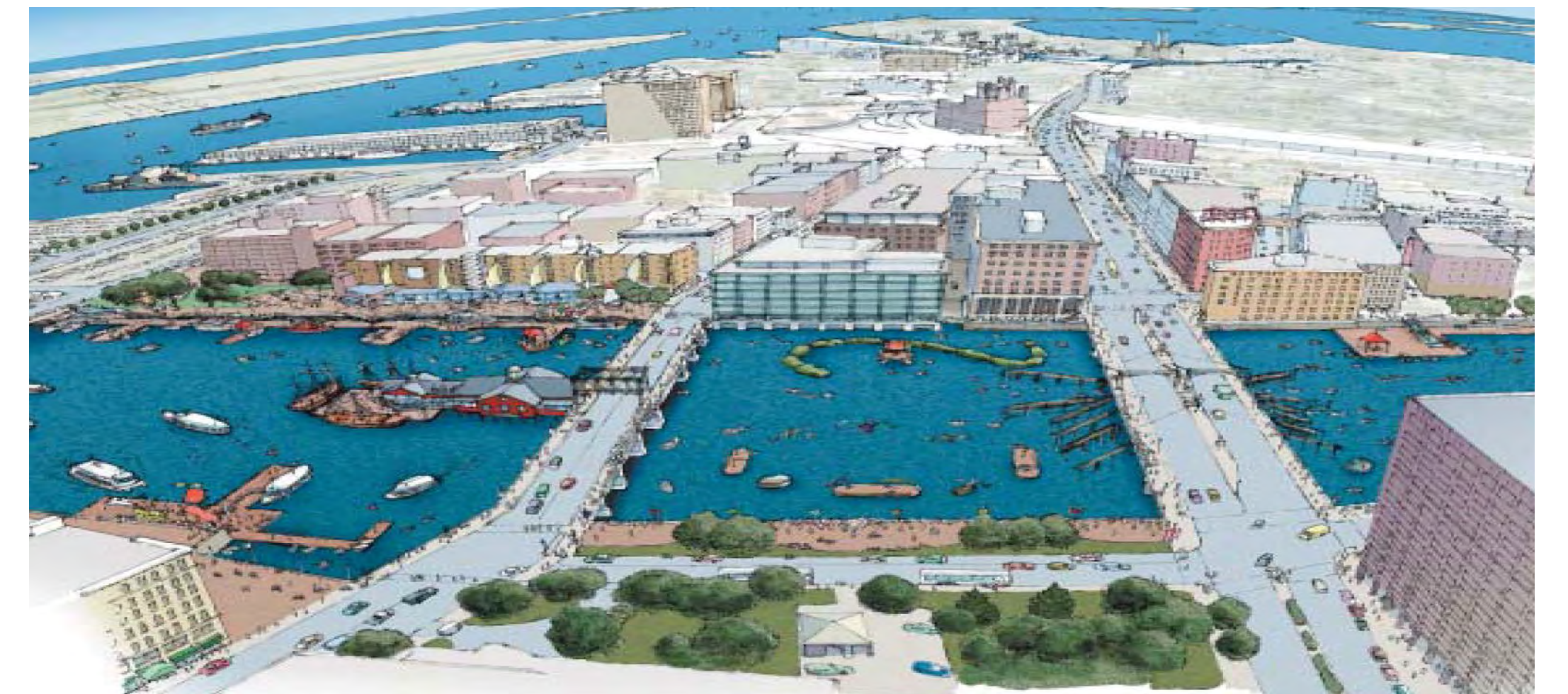
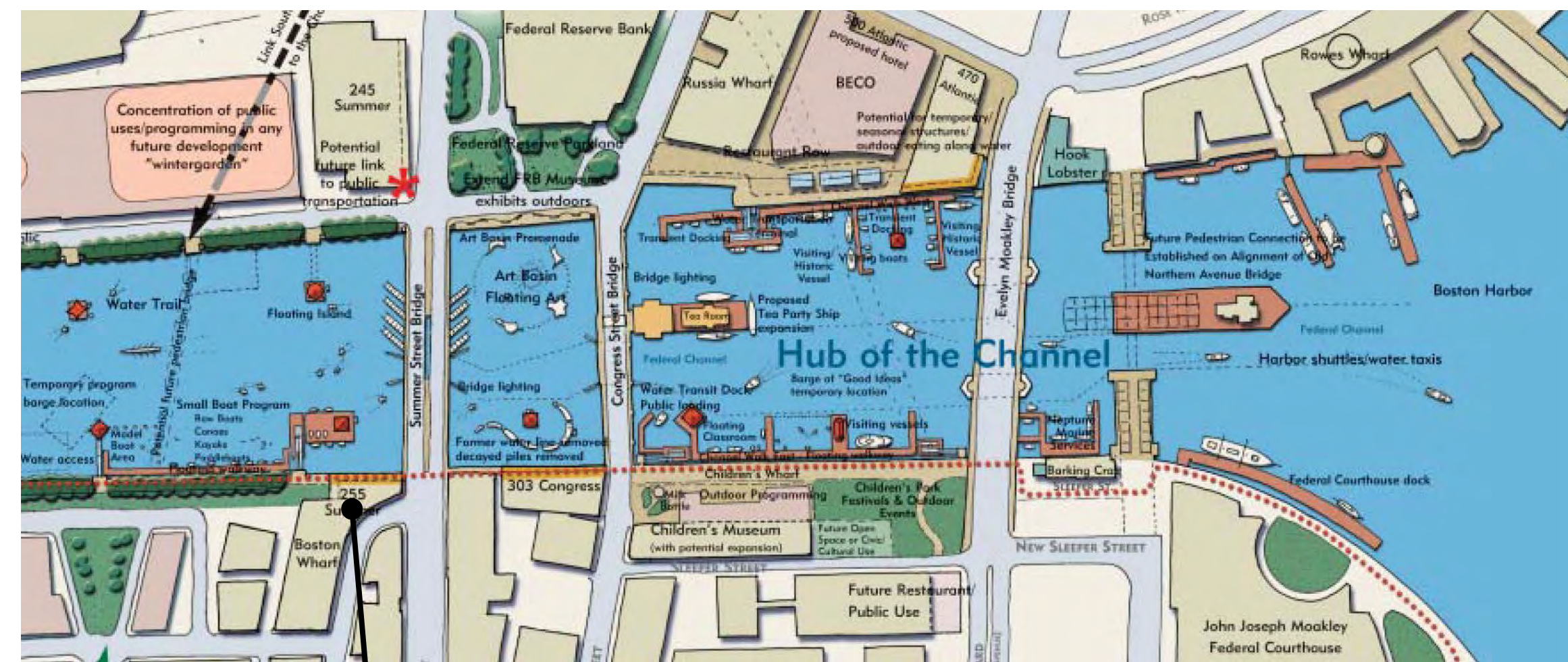
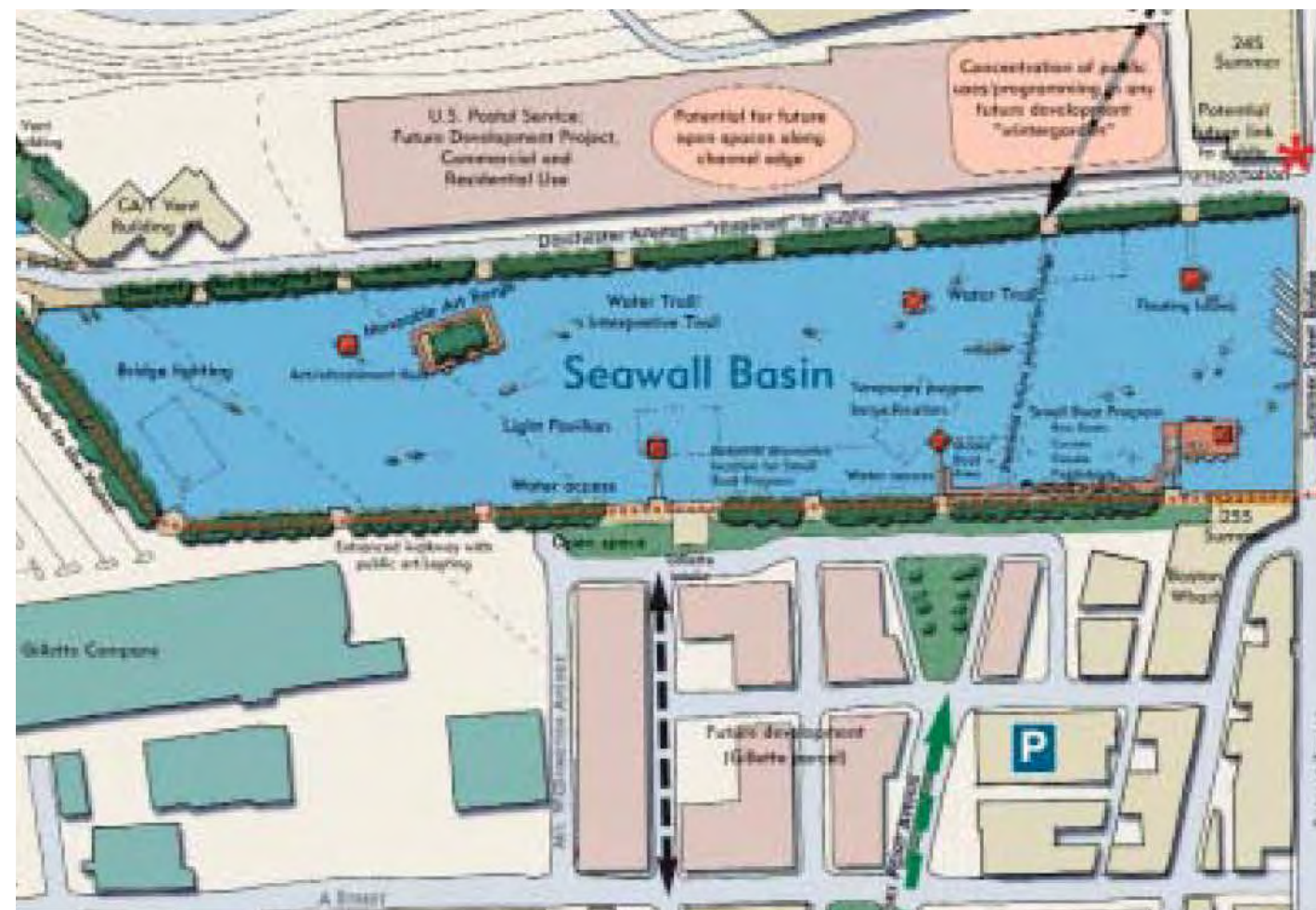




Polita

cocina & tequila bar

FORT POINT NEIGHBORHOOD

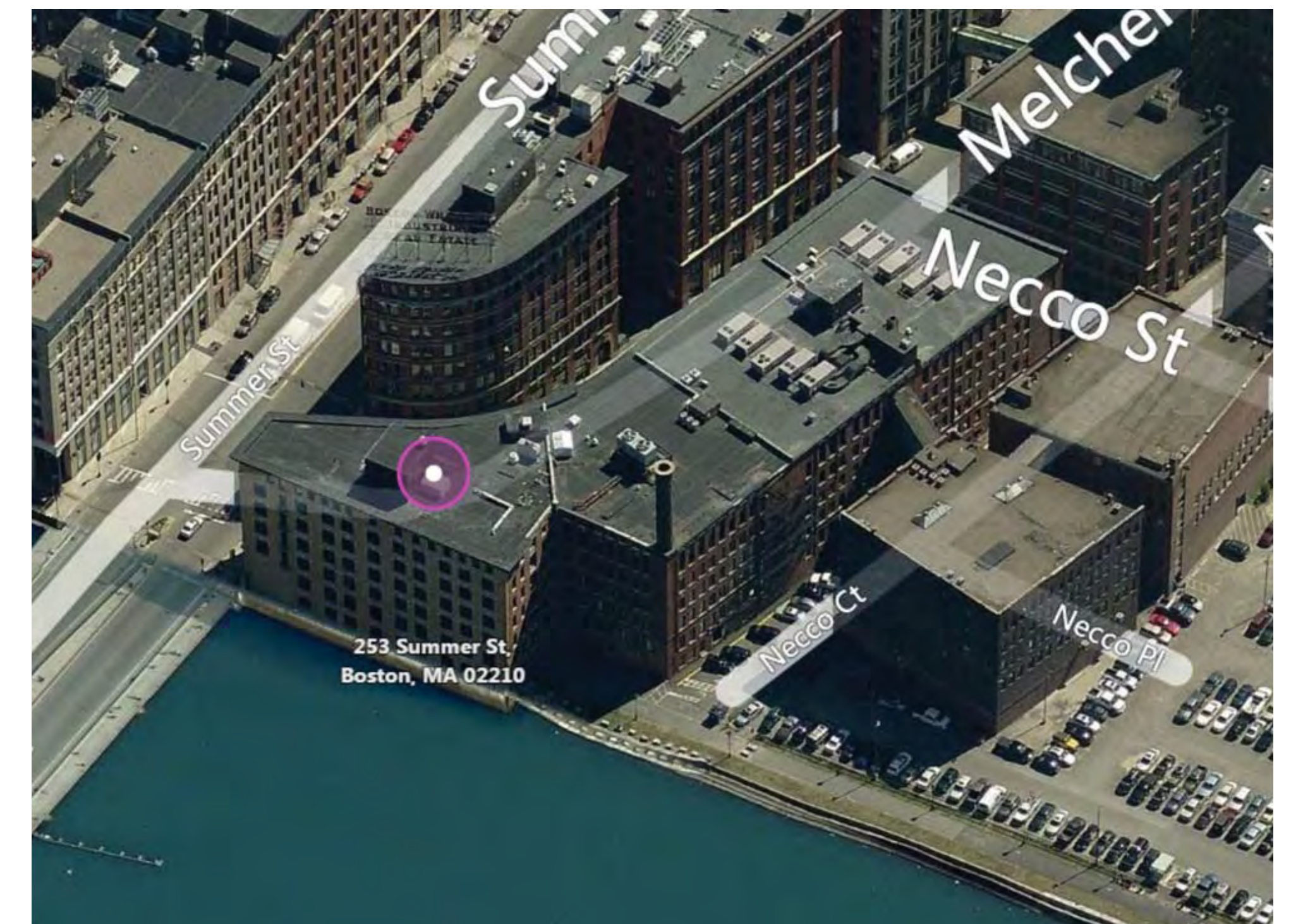


253 SUMMER STREET

AERIAL VIEWS



253 SUMMER STREET



SITE LOCATION
(PREVIOUSLY APPROVED SUBMISSION)

Bergmeyer
05-26-2016

EXTERIOR BUILDING VIEWS



253 SUMMER STREET

BOSTON, MA 02110

(PREVIOUSLY APPROVED SUBMISSION)

Bergmeyer

05-26-2016

EXTERIOR BUILDING VIEWS



253 SUMMER STREET

BOSTON, MA 02110

(PREVIOUSLY APPROVED SUBMISSION)

Bergmeyer

05-26-2016

253 SUMMER STREET CIRCA 1909 TO CIRCA 2017



253 SUMMER TRANSFORMATION

Bergmeyer

03-23-2017



Polita



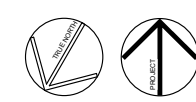
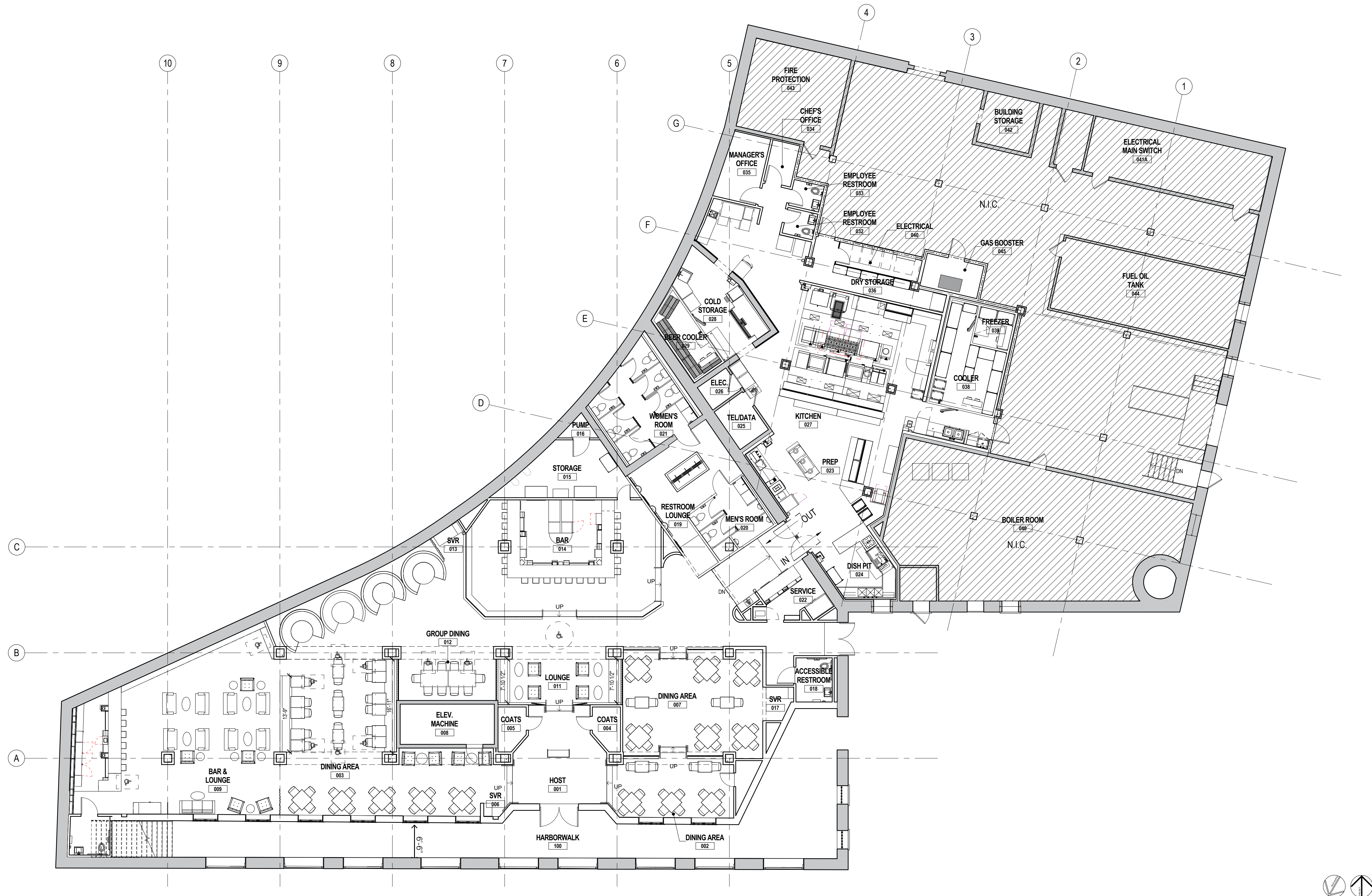
cocina & tequila bar

EXISTING PLAN

(PREVIOUSLY APPROVED SUBMISSION)

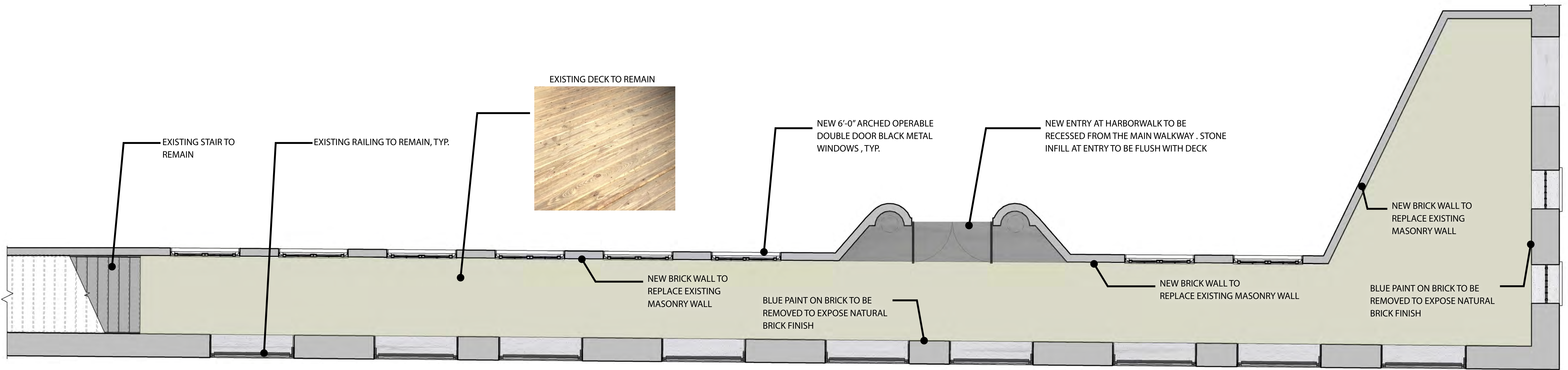
Bergmeyer

05-26-2016

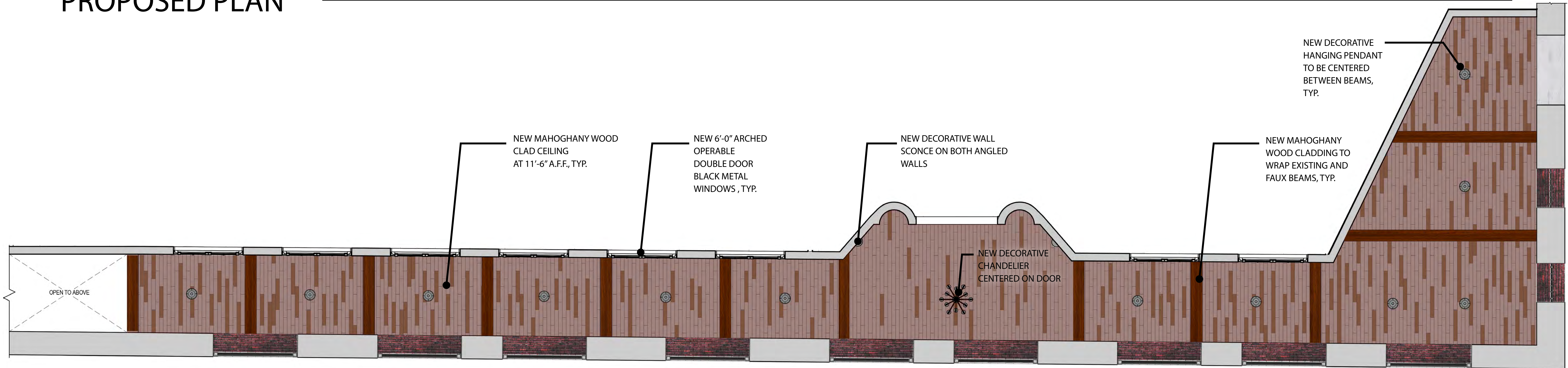


PROPOSED PLAN

Bergmeyer
03-23-2017



PROPOSED PLAN



PROPOSED REFLECTED CEILING PLAN

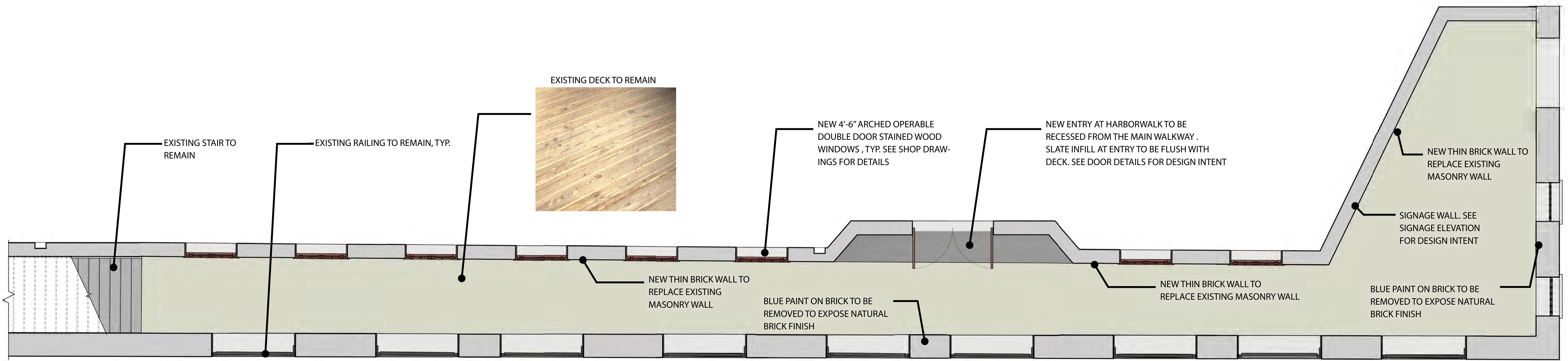
PROPOSED HARBORWALK PLANS

(PREVIOUSLY APPROVED SUBMISSION)

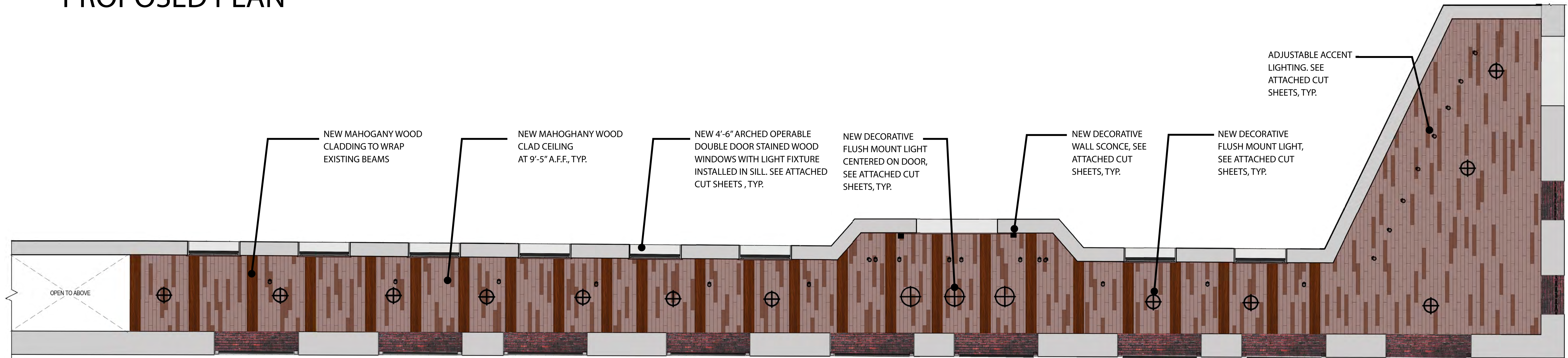
Bergmeyer

12-19-2016





PROPOSED PLAN



PROPOSED REFLECTED CEILING PLAN

PROPOSED HARBORWALK PLANS

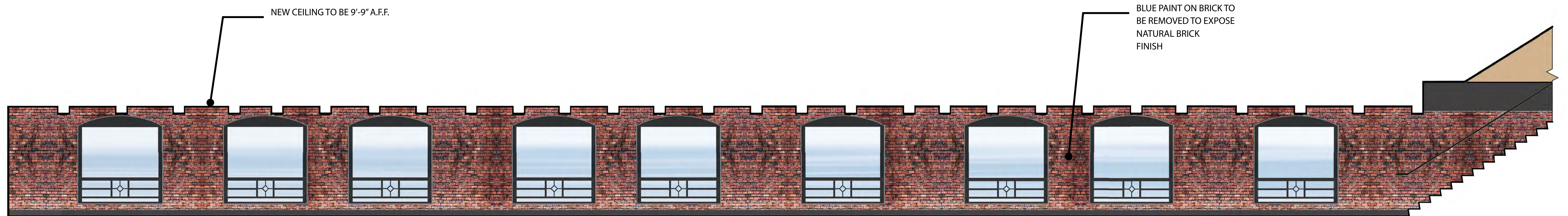


Bergmeyer

03-23-2017



EXISTING ELEVATION



PROPOSED ELEVATION

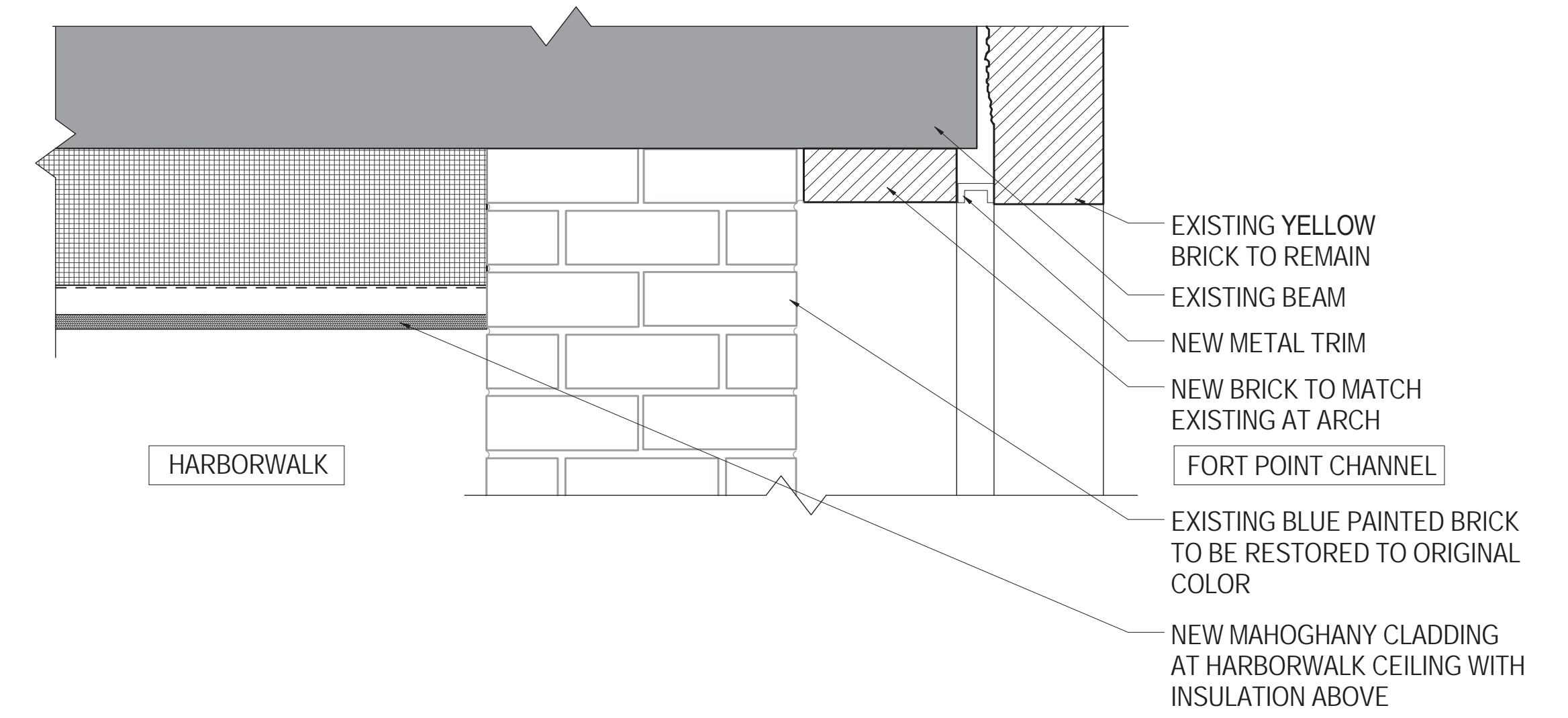
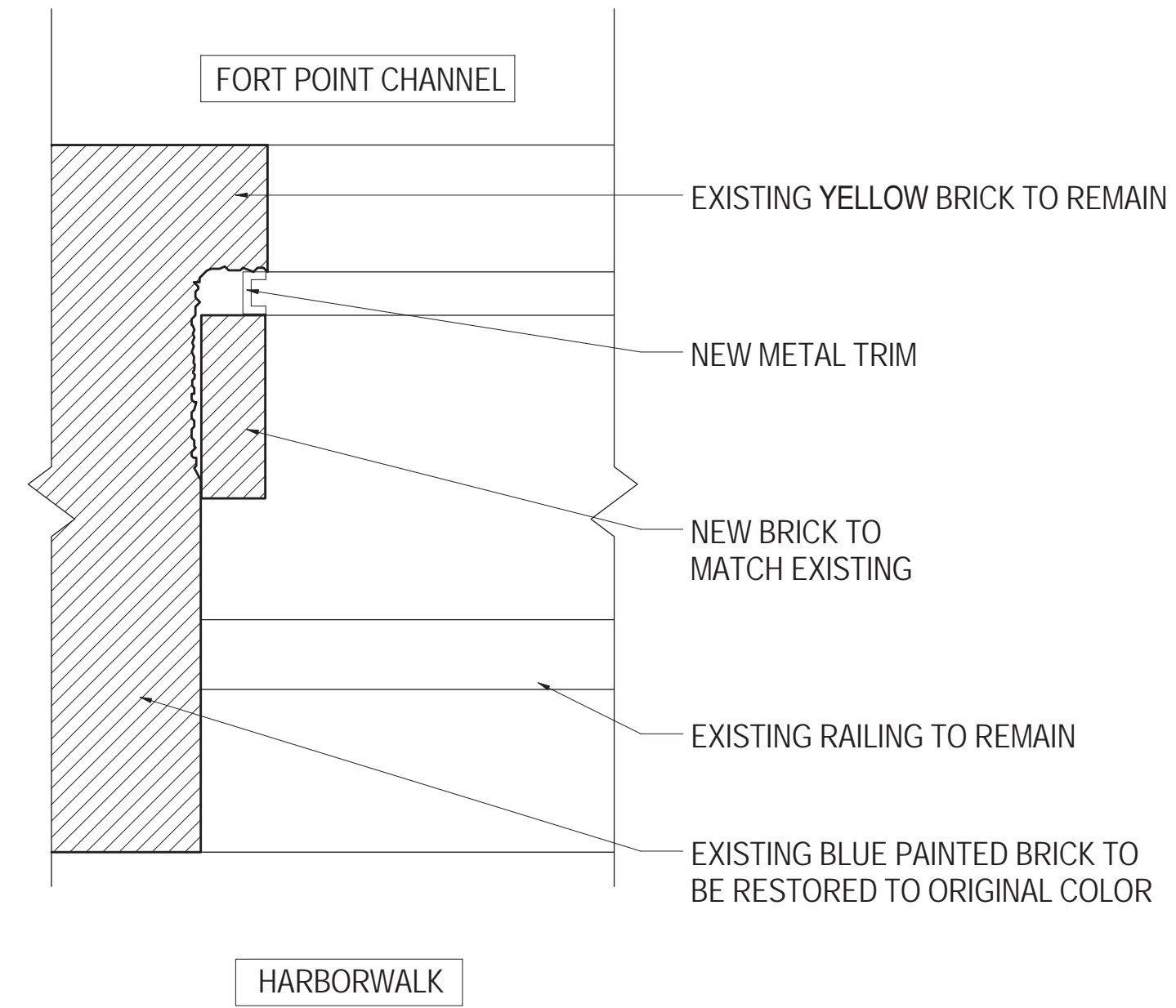
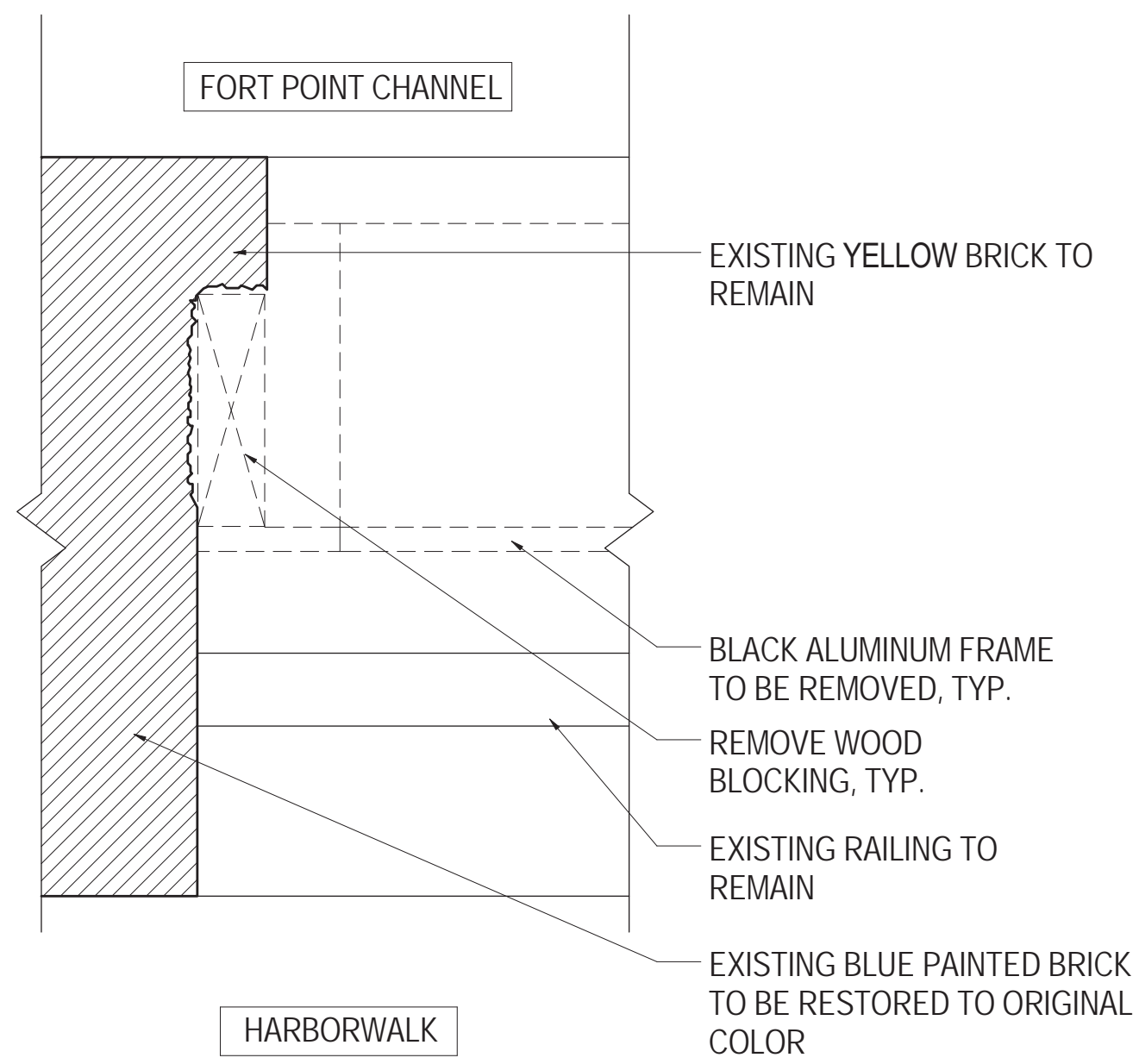
FACING FORT POINT CHANNEL

(PREVIOUSLY APPROVED SUBMISSION)



Bergmeyer

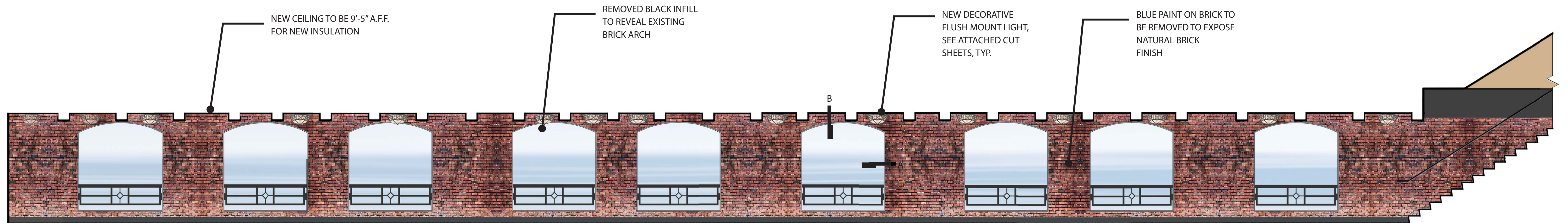
12-19-2016



JAMB/HEAD DEMO

(A) JAMB

(B) HEAD



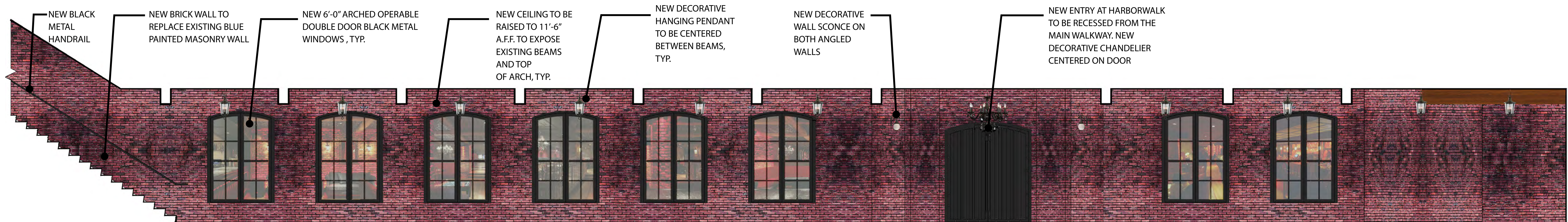
PROPOSED ELEVATION

FACING FORT POINT CHANNEL

Bergmeyer

03-23-2017





PROPOSED ELEVATION

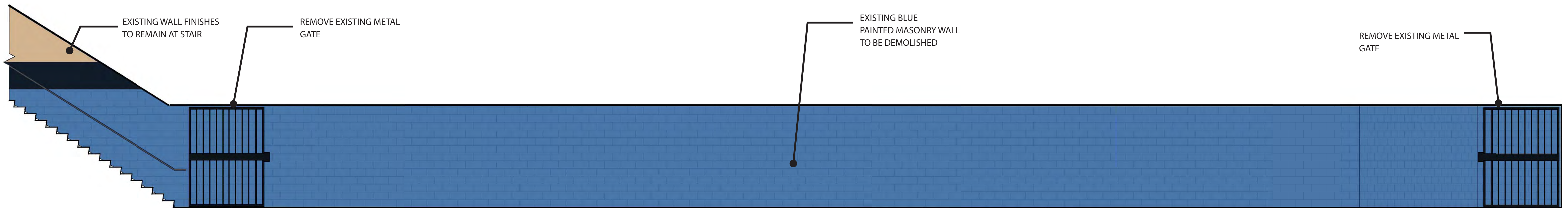


FACING LOLITA COCINA

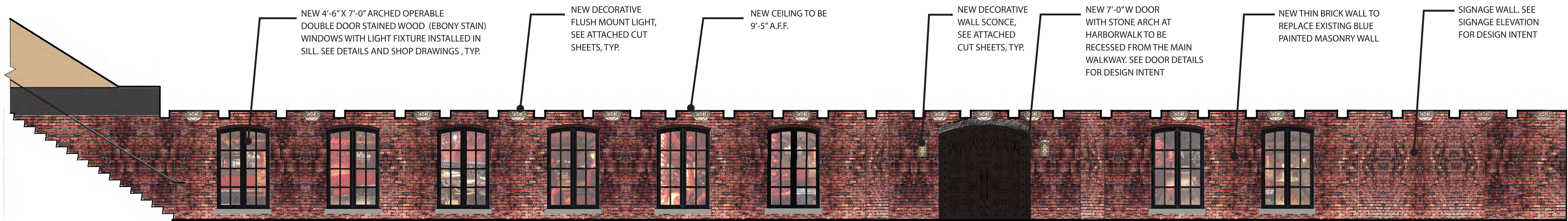
(PREVIOUSLY APPROVED SUBMISSION)

Bergmeyer

05-26-2016



EXISTING ELEVATION



PROPOSED ELEVATION



FACING LOLITA COCINA

Bergmeyer

03-23-2017



PREVIOUSLY APPROVED NECCO COURT ELEVATION



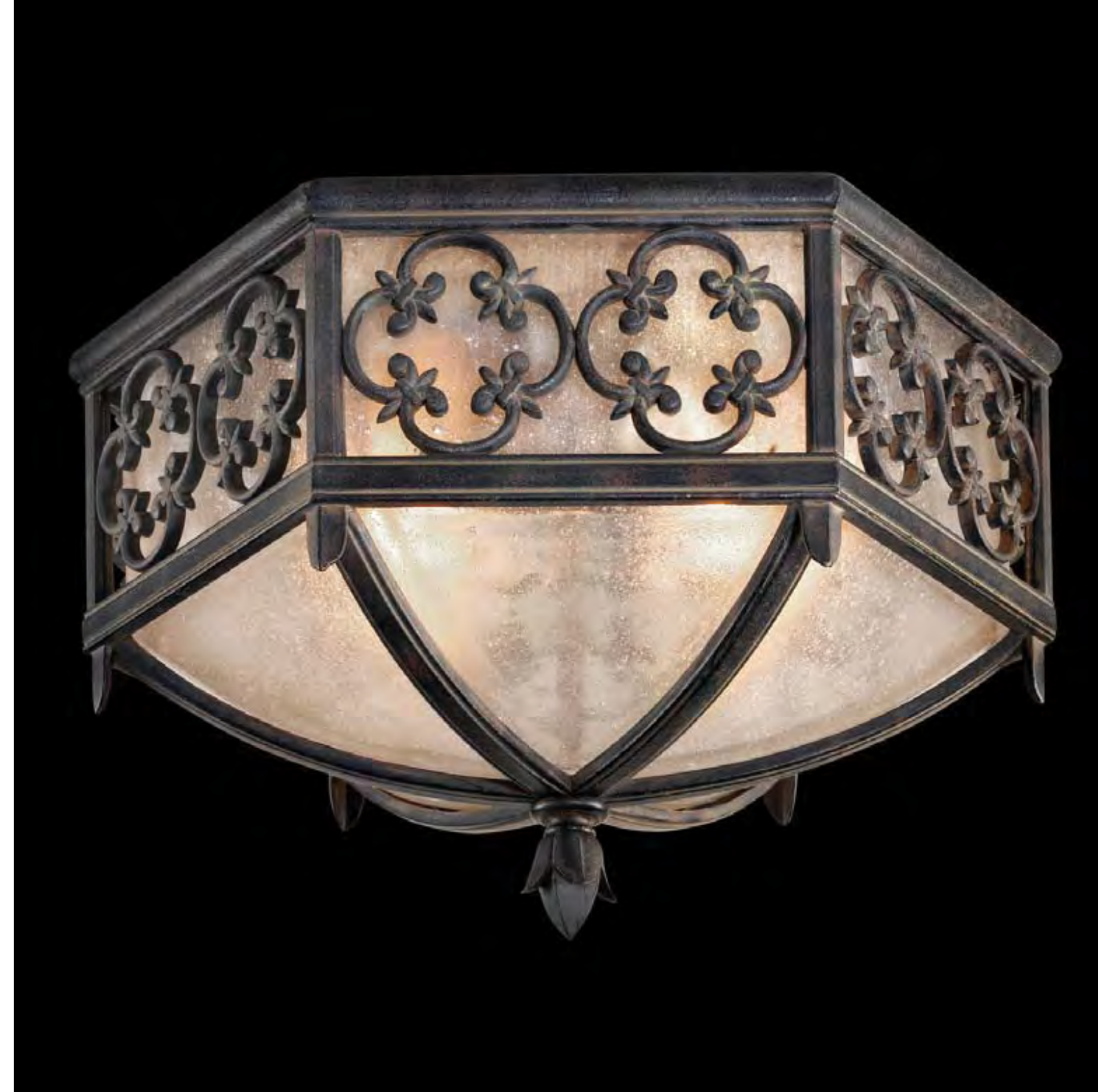
PROPOSED NECCO COURT ELEVATION



NECCO COURT ELEVATION

Bergmeyer

03-23-2017



COSTA DEL SOL 324882ST

DESCRIPTION

Flush mount in stylized quatrefoil design features Marbella wrought iron finish and subtle iridescent textured glass.

U.S. DIMENSIONS & DETAILS

DIMENSIONS	H 10" x W 16"
WEIGHT	20 LBS
BULB	A-19
WATTS	60
BASE	Medium
SOCKET	Porcelain
BULB QTY.	2

METRIC DIMENSIONS & DETAILS

DIMENSIONS	H 25cm x W 41cm
WEIGHT	9 Kg.
BULB	A60 E27
WATTS	60
BASE	Medium
SOCKET	Thermoplastic
BULB QTY.	2



COSTA DEL SOL 329681ST

DESCRIPTION

Wall sconce in stylized quatrefoil design features Marbella wrought iron finish and subtle iridescent textured glass.

U.S. DIMENSIONS & DETAILS

DIMENSIONS	H 24" x W 8" x D 5"
WEIGHT	9 LBS
BULB	B-10
WATTS	60
BASE	Candelabra
SOCKET	Porcelain
BULB QTY.	2

METRIC DIMENSIONS & DETAILS

DIMENSIONS	H 61cm x W 20cm x D 13cm
WEIGHT	4 Kg.
BULB	B35 E14
WATTS	60
BASE	Candelabra
SOCKET	Thermoplastic
BULB QTY.	2

Yolita

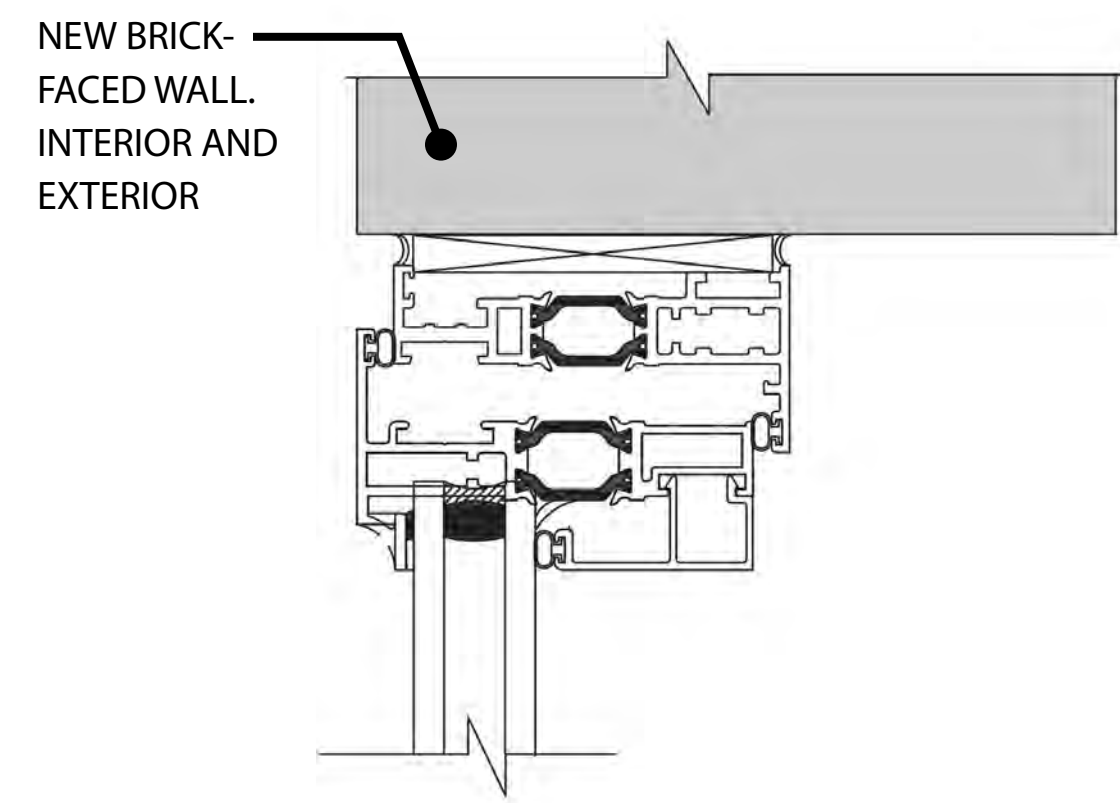


cocina & tequila bar

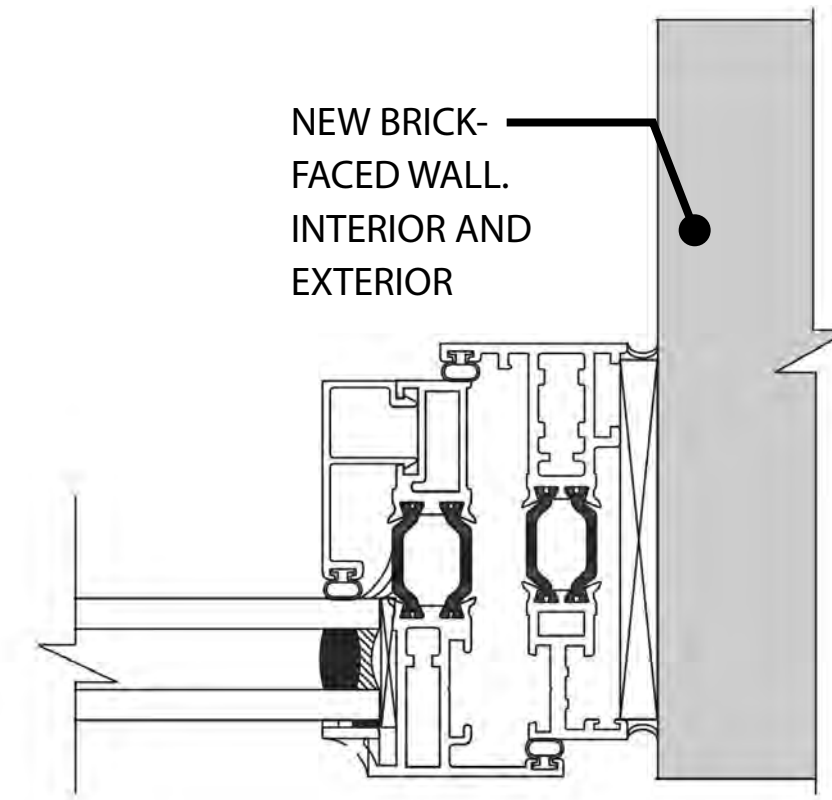
HARBORWALK LIGHT FIXTURE CUT SHEETS

Bergmeyer

03-23-2017

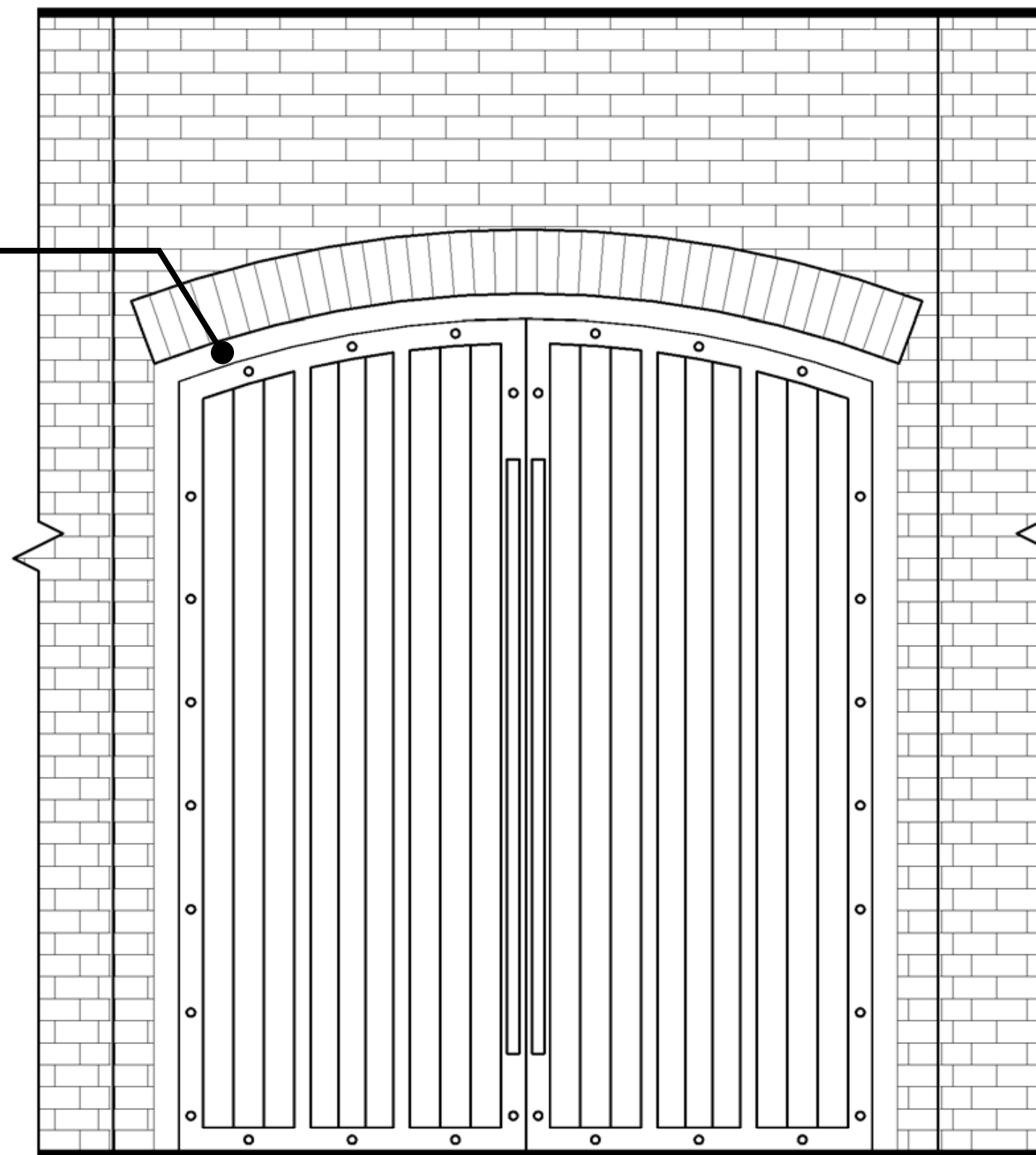


(1) WINDOW HEAD

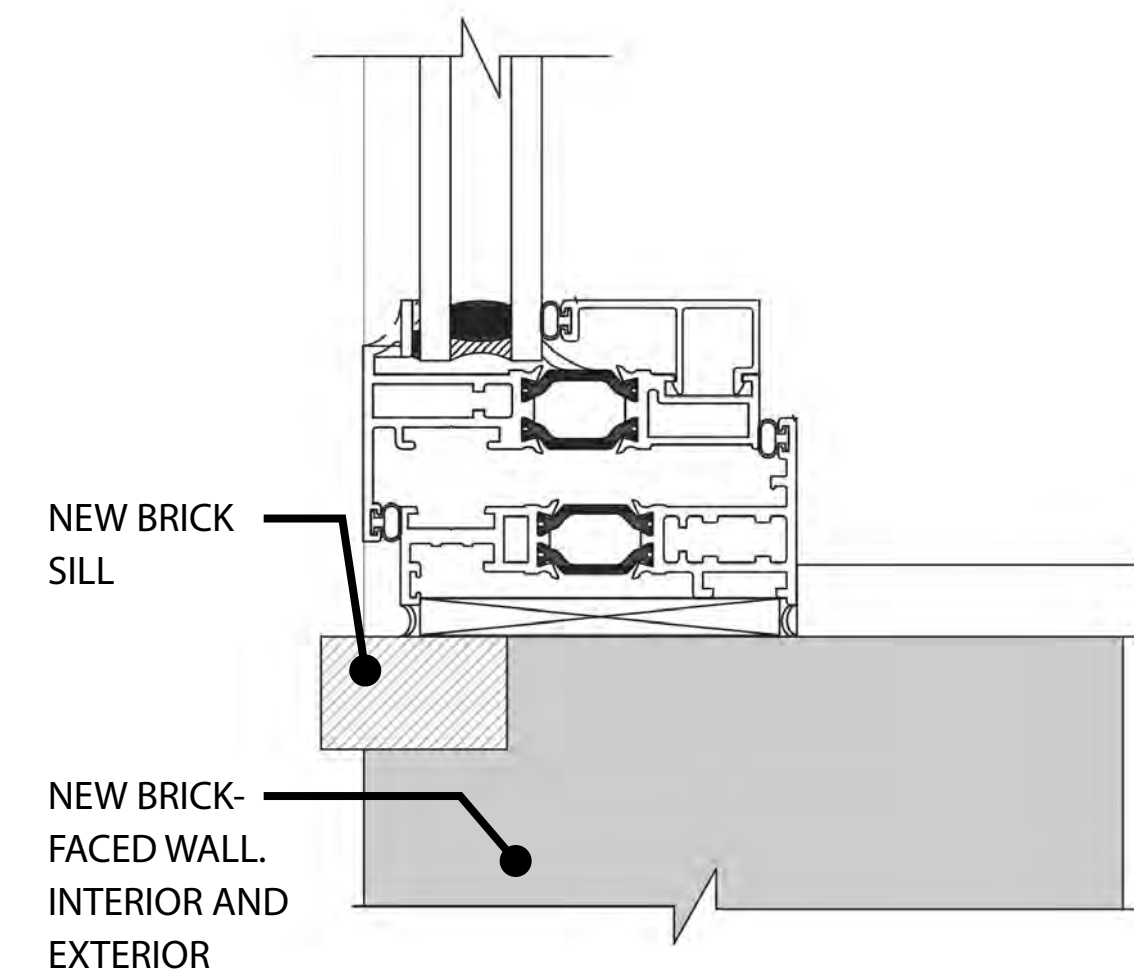
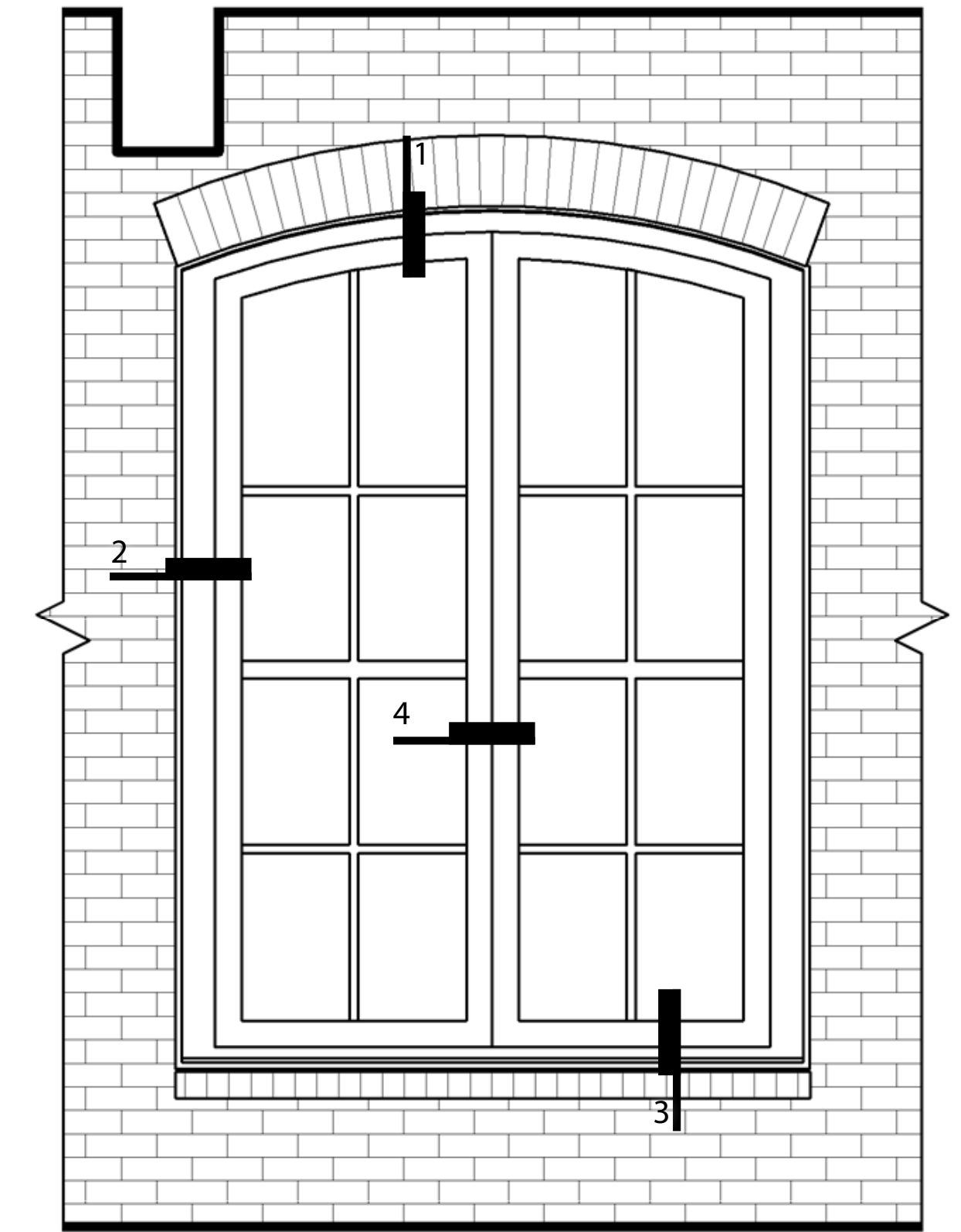


(2) WINDOW JAMB

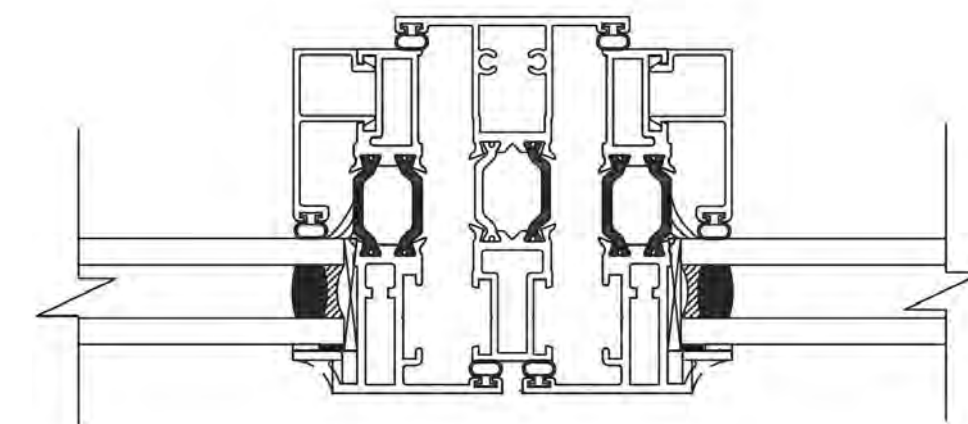
CUSTOM DOOR
FRAME DETAIL
TO BE
CONFIRMED



NOTE: DOOR HARDWARE TO BE CONFIRMED



(3) WINDOW SILL



(4) VERTICAL INTEGRAL MUNTIN

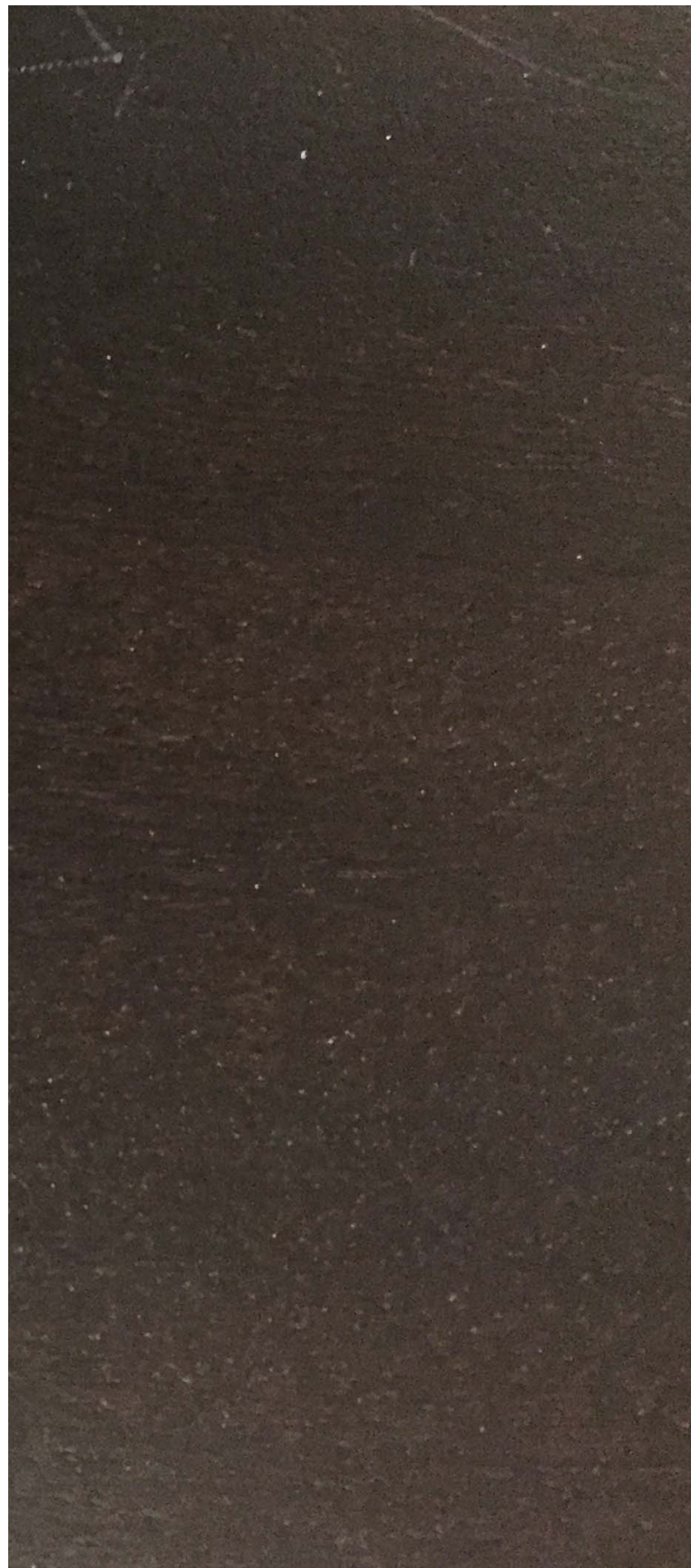


WINDOW DETAILS

(PREVIOUSLY APPROVED SUBMISSION)

Bergmeyer

05-26-2016

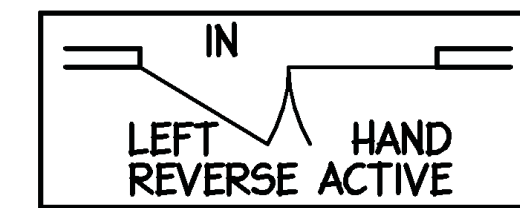
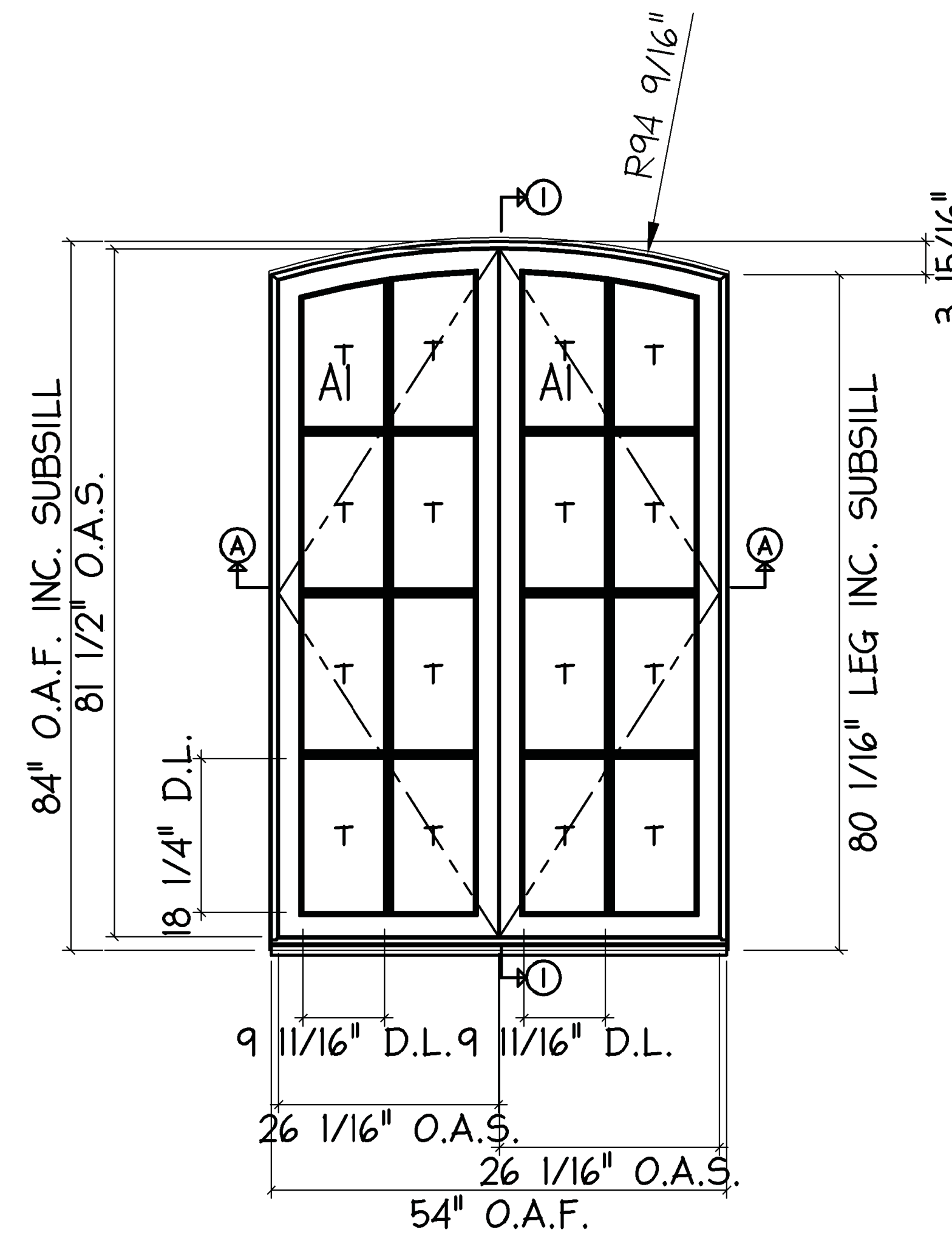


WOOD SAMPLE

SPECIFICATION	
FRAME	
JAMB DEPTH	4 9/16"
JAMB TONGUE	3/4"
JAMB TYPE	SQUARE - ONE PIECE
W/S COLOR	BLACK
TRIM	
EXT. TRIM	SILL ONLY (WOOD)
SILL PROJ	1 1/2"
SILL HORN	0" PAST FRAME
SILL FACE	1 1/8"
HARDWARE	
TYPE	M-POINT/BUTT HINGE BA
HANDLE TYPE	DK7 DEVON HANDLE
COLOR	OILRUB BRONZE
SASH STOP	HD CAM
WINDOW SASH	
SASH THICKNESS	2"
TOP RAIL	2 1/2"
BTM RAIL	2 1/2"
STILE	2 1/2"
BEAD TYPE	0.375" WOOD PUTTY/OGEE
OVERALL TDL BAR	15/16"
GLASS	
TYPE	CARD272 LE TMP / CLR TEMP
ARGON, NO CAPILLARY TUBES (UP TO 2000FT. ELEVATION)	
THICKNESS	3mm/3mm
LOW E SURFACE	2
SPACERBAR	EDGE TECH BLACK
TAPE	BLACK

ATTENTION: FRENCH CASEMENTS TO HAVE 4-1/2" x 4-1/2" HINGES TO CLEAR 1-1/2" TRIM.

MOD A1 - NO TEMPERED/LAMINATED SAFETY BUGS. MULTIPONT HANDLE HEIGHT AT 40 3/4" CENTER FROM BOTTOM OF SASH.



E-001	
LEGEND	
O.A.S.	OVERALL SASH SIZE
O.A.F.	OVERALL FRAME
M.O.A.F.	MODULE OVERALL FRAME
D.L.	DAYLITE OPENING
G.O.	GLASS OPENING
PROJ	PROJECTION (SILL)
D.G.	DIRECT GLAZED
MP	MULTIPONT
F.O.	FRAME OPENING
HDC	HARDCOAT
LE/LOWE	LOW EMISSIVITY
R.O.	ROUGH OPENING
CTR	CENTER
BA	BOTH ACTIVE (MULTIPONT)
SA	SINGLE ACTIVE (MULTIPONT)
T	INDICATES TEMPERED
⬇	CAM HANDLE / LOCKING POINT

NOTES:
 APPROXIMATE WEIGHT PER UNIT: 165 lbs.
 ALL CURVED UNITS WILL BE CONSTRUCTED USING FINGER JOINED BLOCKUPS, WHICH ARE MORE VISIBLE ON STAIN GRADE ORDERS.
 (EUROPEAN STYLE) MULTIPONT HARDWARE.

UNIT IS VIEWED FROM THE EXTERIOR.

All shop drawings and copies thereof remain the exclusive property of Dynamic Windows & Doors Inc. Copyright © 2017 All rights reserved.

Eclipse Version: 4.37.1 Elevations Version: 0.28457

APPROVED FOR MANUFACTURE



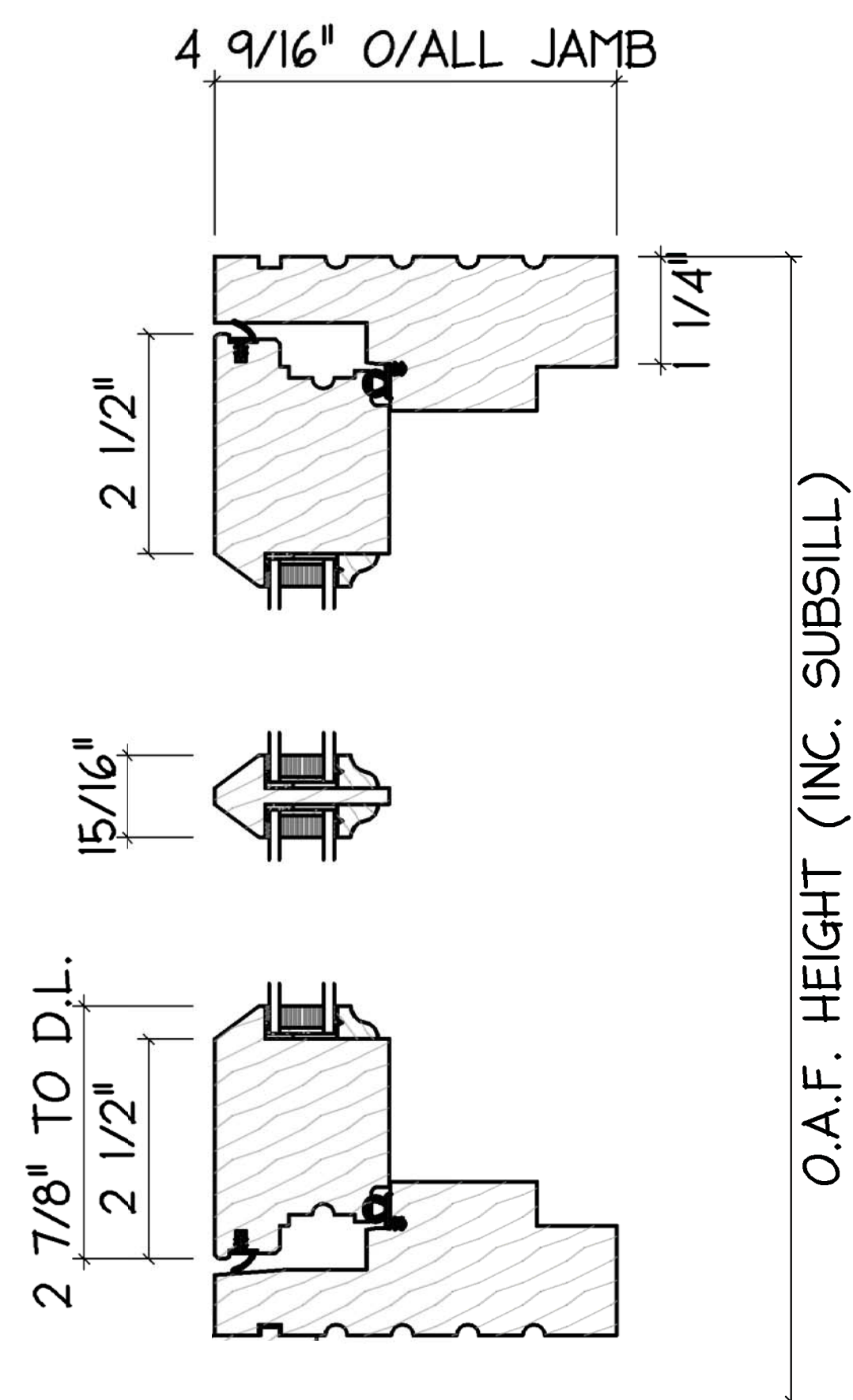
REF. # : 26890-01-001	SPECIES : SAPELE MIXED GRAIN
PROJECT : LOLITA TEQUILA BAR	FINISH : EBONY STAIN EXT & INT
CUSTOMER : ASHLING INCORPORATED	DATE : FEB 27, 2017
LOCATION : WINDOWS	SCALE: 3/8" = 1'
REV. : L	QTY: 8
SALESMAN : JIM OLENDER / SUK DHARIWAL	

WINDOW DETAILS

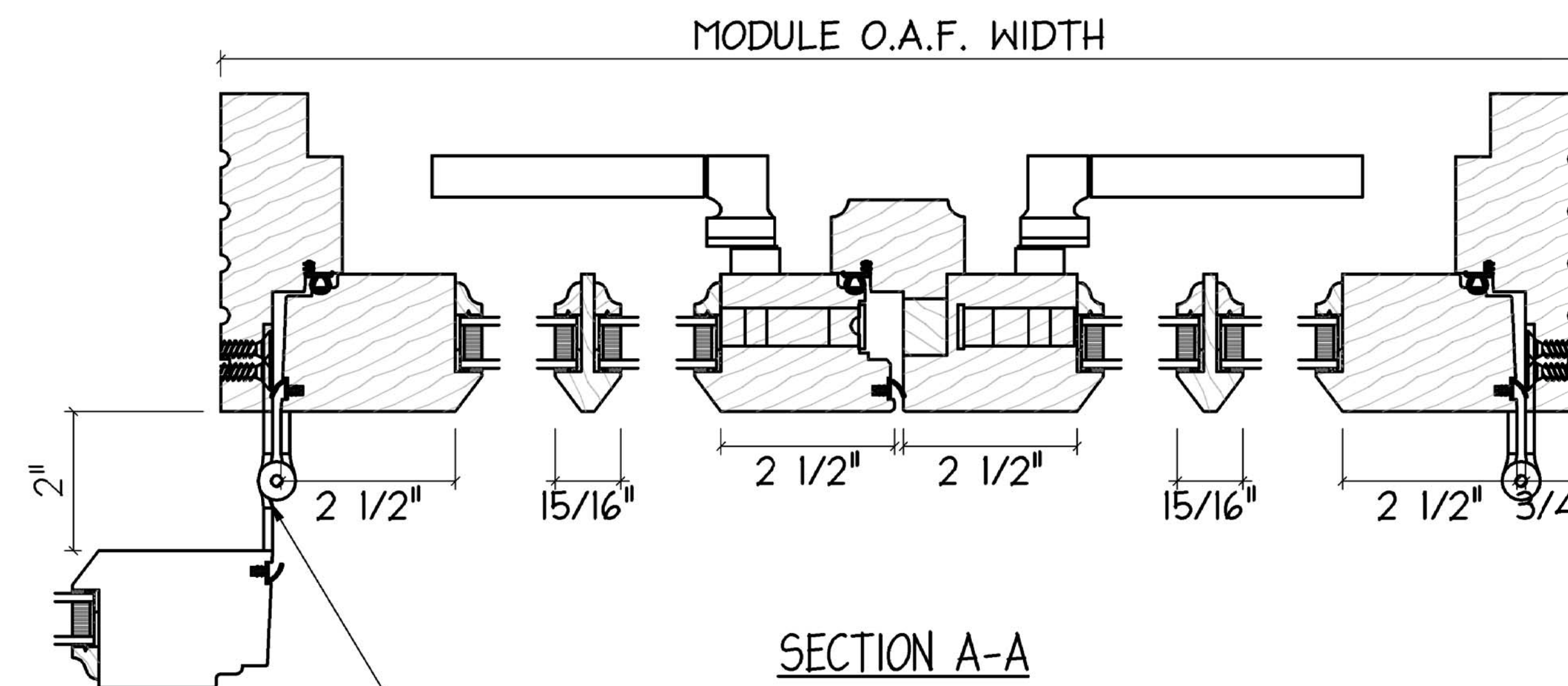
Bergmeyer

03-23-2017





SECTION I-I



SECTION A-A

SUPPLIED WITH 4 1/2" X 4 1/2" HINGES TO CLEAR TRIM BY OTHERS

CUSTOM

All shop drawings and copies thereof remain the exclusive property of Dynamic Windows & Doors Inc. Copyright © 2017 All rights reserved. Eclipse Version: 4.37.122 Sections Version: 14.14712

APPROVED FOR MANUFACTURE

X



REF. # : 26890-01 (SECTION 001)
 PROJECT : LOLITA TEQUILA BAR
 CUSTOMER : ASHLING INCORPORATED
 LINE : 1

DATE : FEB 27, 2017
 SALESMAN : JIM OLENDER / SUK DHARIWAL

SCALE : 1/4" = 1"

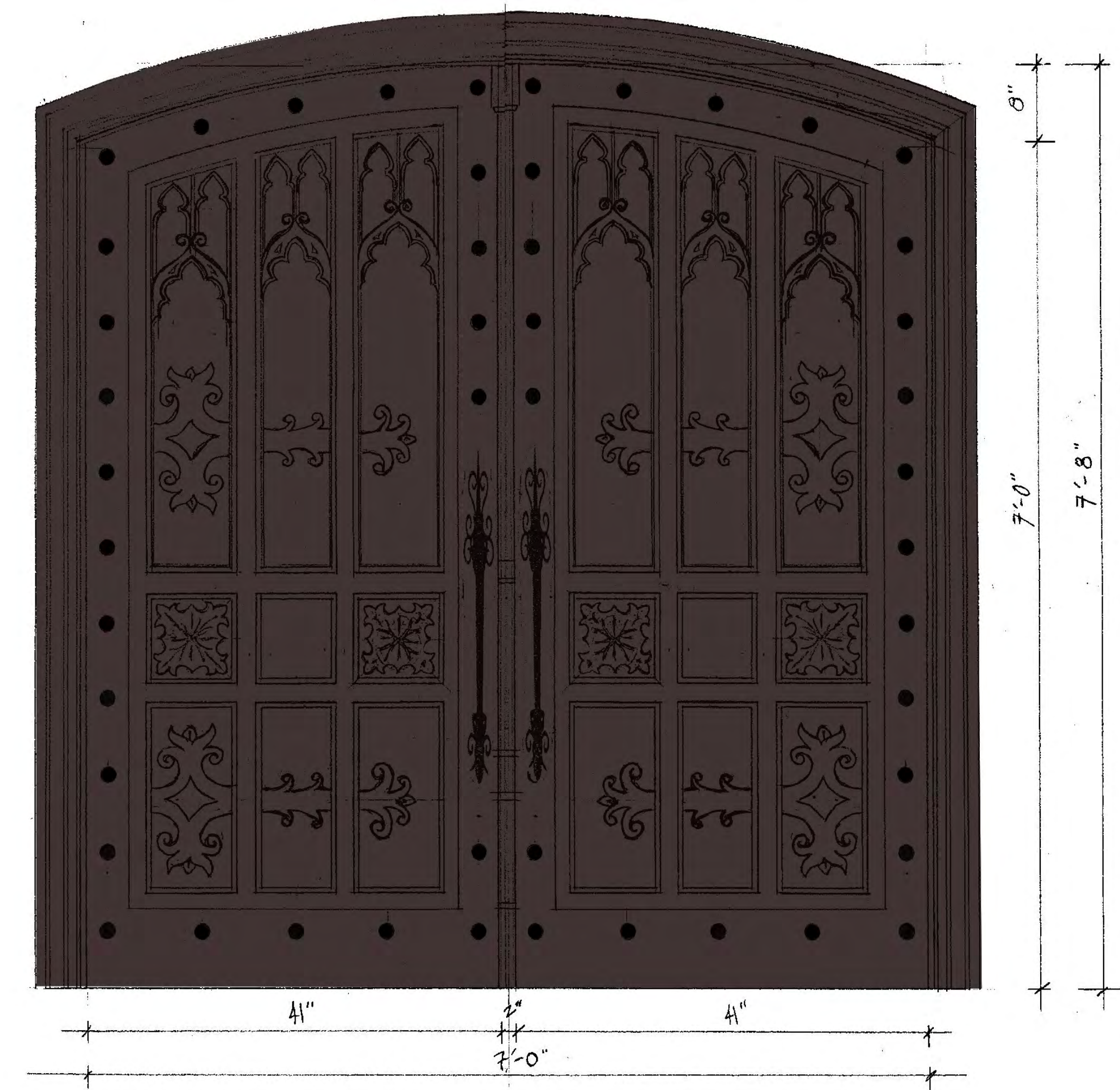
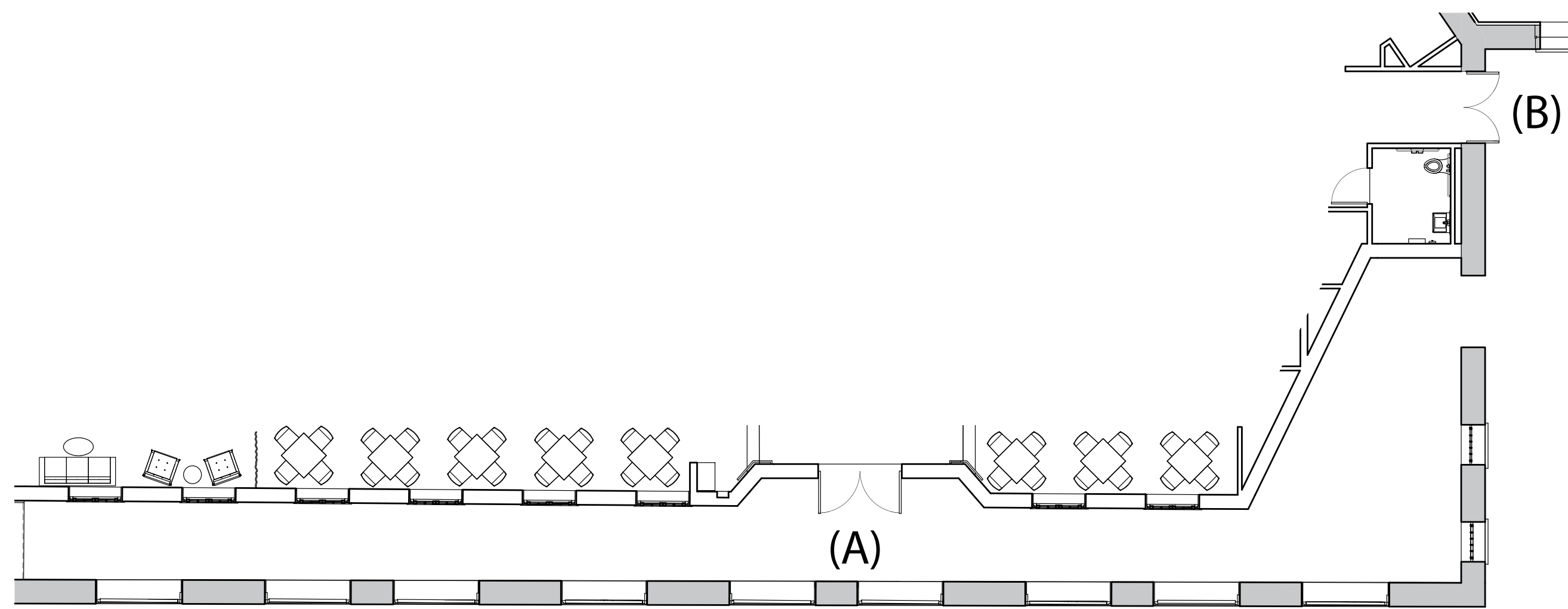
Q³



WINDOW DETAILS

Bergmeyer

03-23-2017

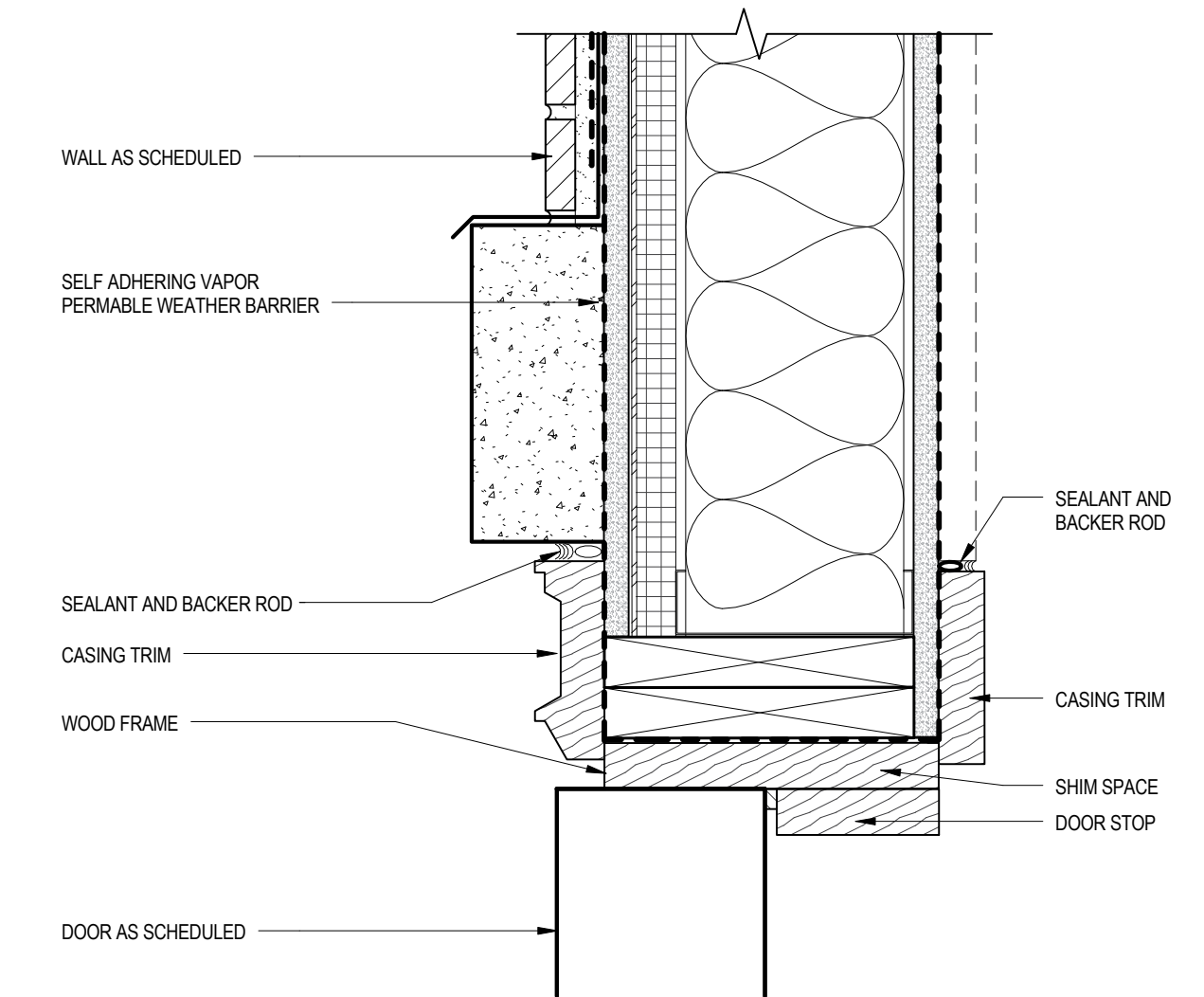


(A) HARBORWALK ENTRY DOOR

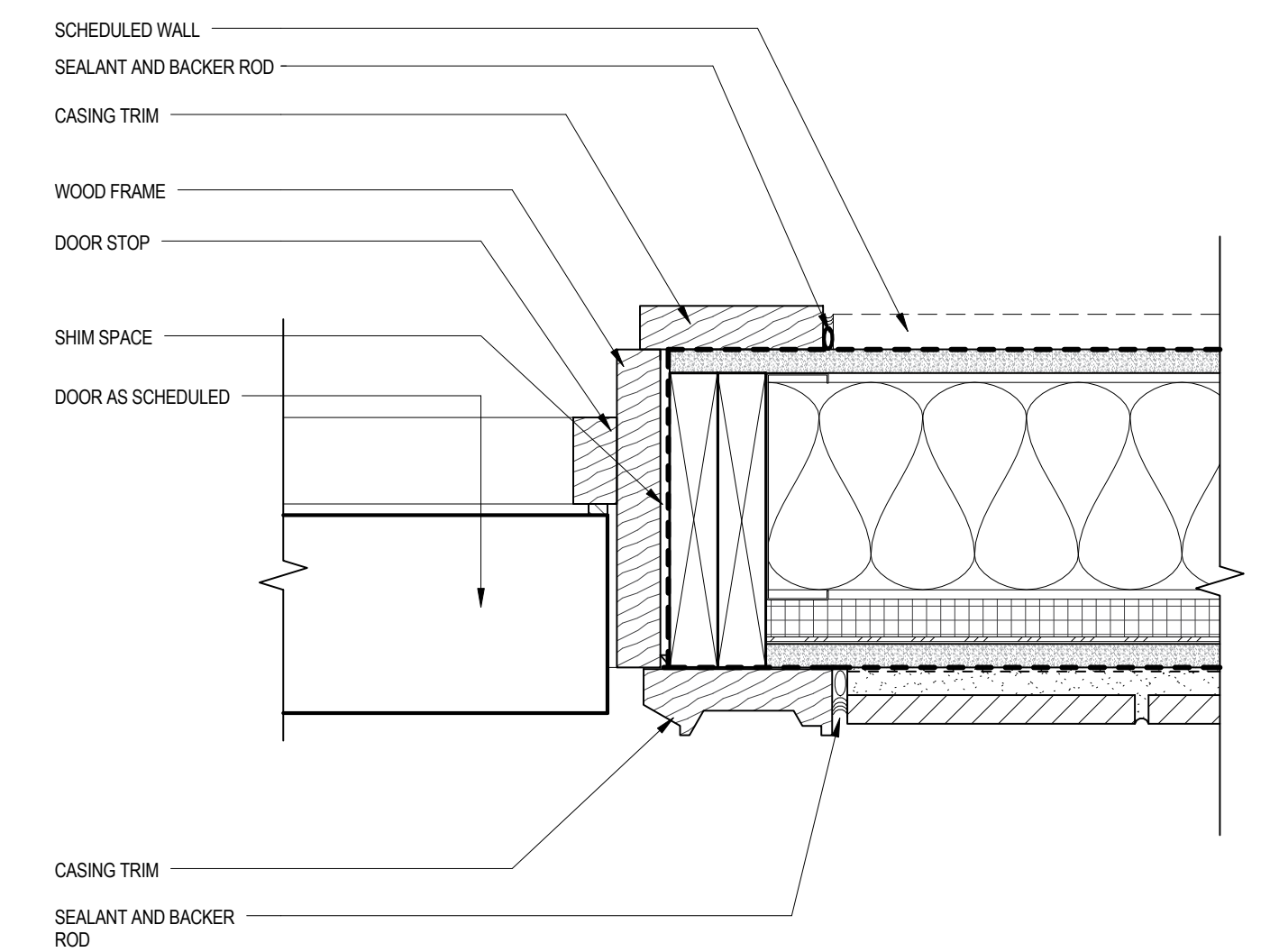


(B) MAIN ENTRY DOOR

NOTE: CUSTOM WOOD DOORS WITH IRON HARDWARE. EXACT DOOR HARDWARE TO BE CONFIRMED



WOOD DOOR HEAD



WOOD DOOR JAMB

EXTERIOR ENTRY DOOR DETAILS

Bergmeyer

03-23-2017

Yolita



cocina & tequila bar

FORT POINT NEIGHBORHOOD



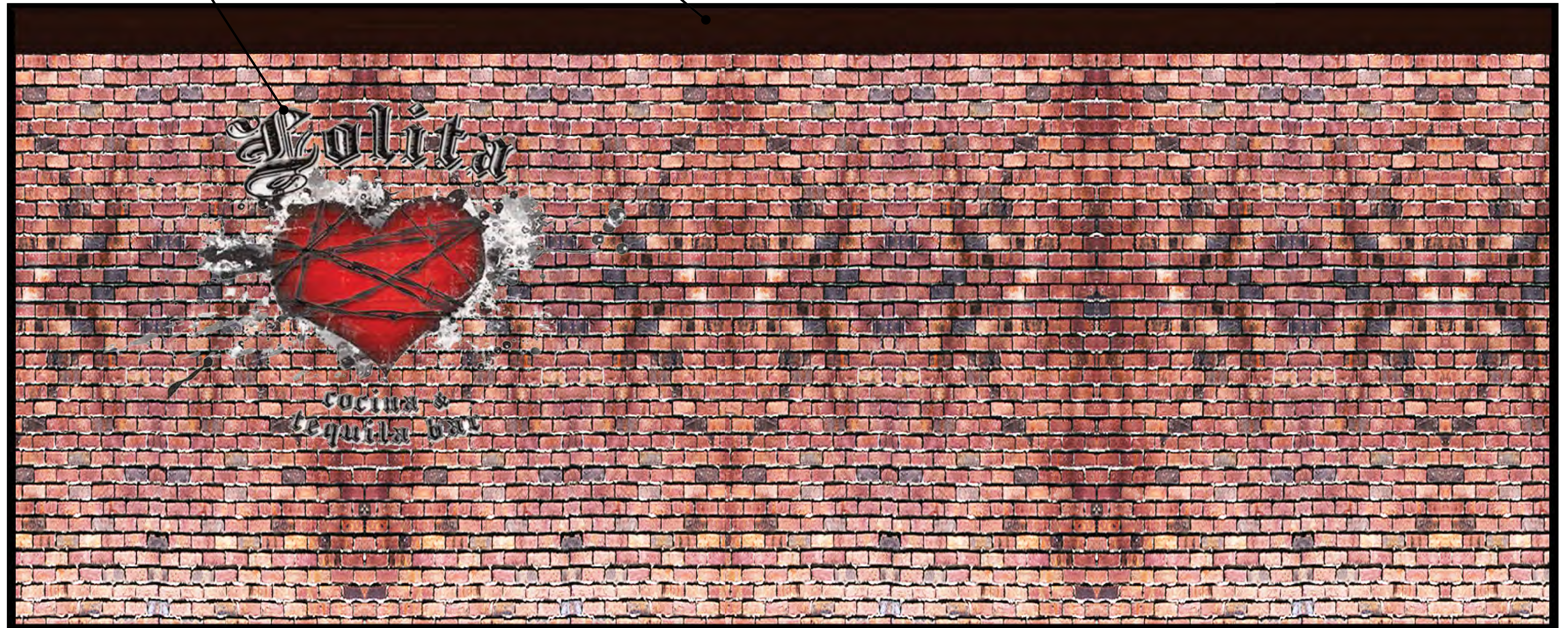
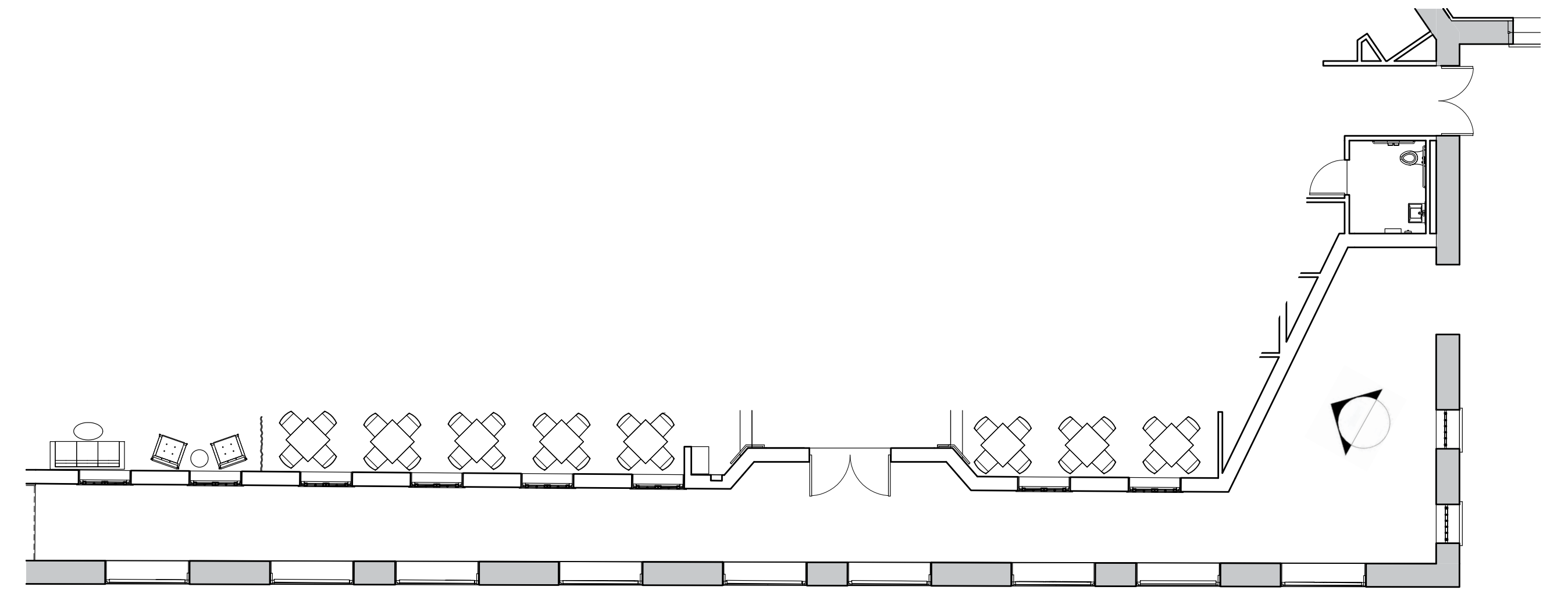
PAINTED SIGNAGE HISTORIC PRECEDENTS

Bergmeyer

03-23-2017

NEW MAHOGANY WOOD CLADDING TO WRAP EXISTING BEAMS

PROPOSED PAINTED "LOLITA" SIGNAGE
DIM: 6'-0" H X 9'-0" W



HARBOWALK SIGNAGE WALL

Bergmeyer

03-23-2017



PROPOSED WALL MOUNTED 44" GAS
SCONCE. SEE CUT SHEETS

PROPOSED PAINTED "LOLITA" SIGNAGE
DIM: 10'-0" H X 15'-6" W



VIEW OF EXTERIOR LANTERN AND SIGNAGE

Bergmeyer

03-23-2017



EXTERIOR PAINTED SIGN



HARBORWALK PAINTED SIGN

NOTE: SIGNAGE DIMENSIONS ARE TAKEN FROM THE MOST FURTHESTMOST POINT OF THE PAINTED SIGN.

SIGNAGE DIMENSIONS





IMAGE OF PROPOSED GOOSENECK FIXTURE



WALL MOUNTED GOOSENECK LIGHTING

BRIDGE MOUNTED SPOTLIGHT



EXTERIOR SIGNAGE ILLUMINATION

Bergmeyer

03-23-2017

ESTATE

The Kronberg

Model 9000

Named for the majestic Kronberg Mountain in the Appenzell Alps of Switzerland, this most regal of our lamps embodies the power and elegance of old Europe. The Kronberg is our largest lamp, standing 44 inches tall on its elegant scrolled supports. Combining scale, detail and craftsmanship, the Kronberg is an exceptional choice for both magisterial residence and historic streetscape.



Post Mount



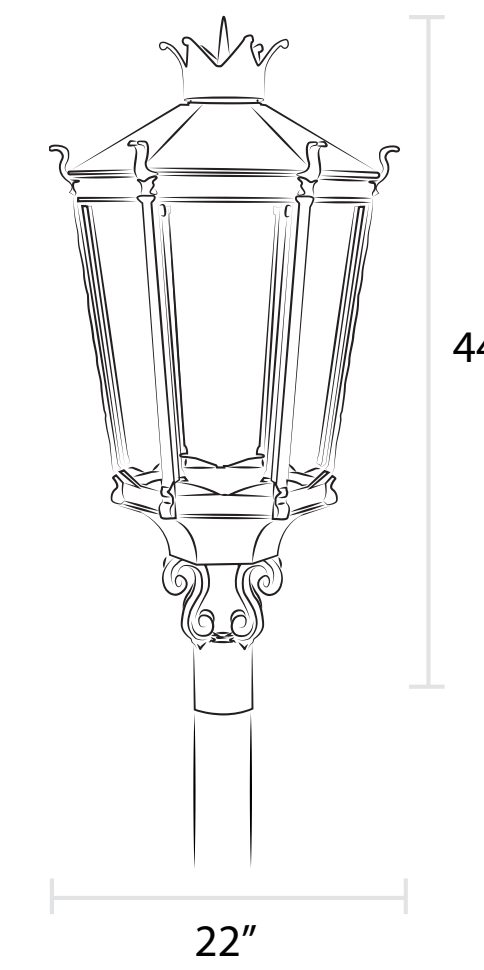
Wall Mount



Pier Mount
As shown with Spike finial

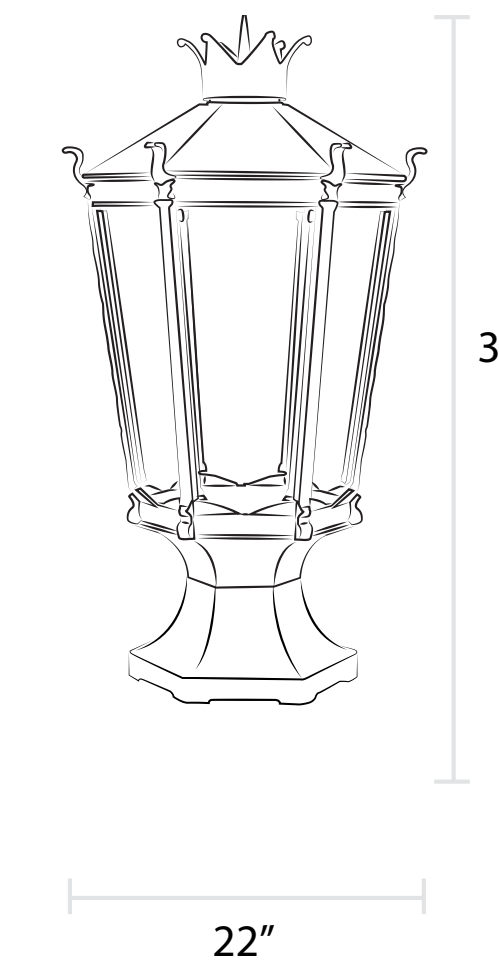
AMERICANGASLAMP.COM

The Kronberg



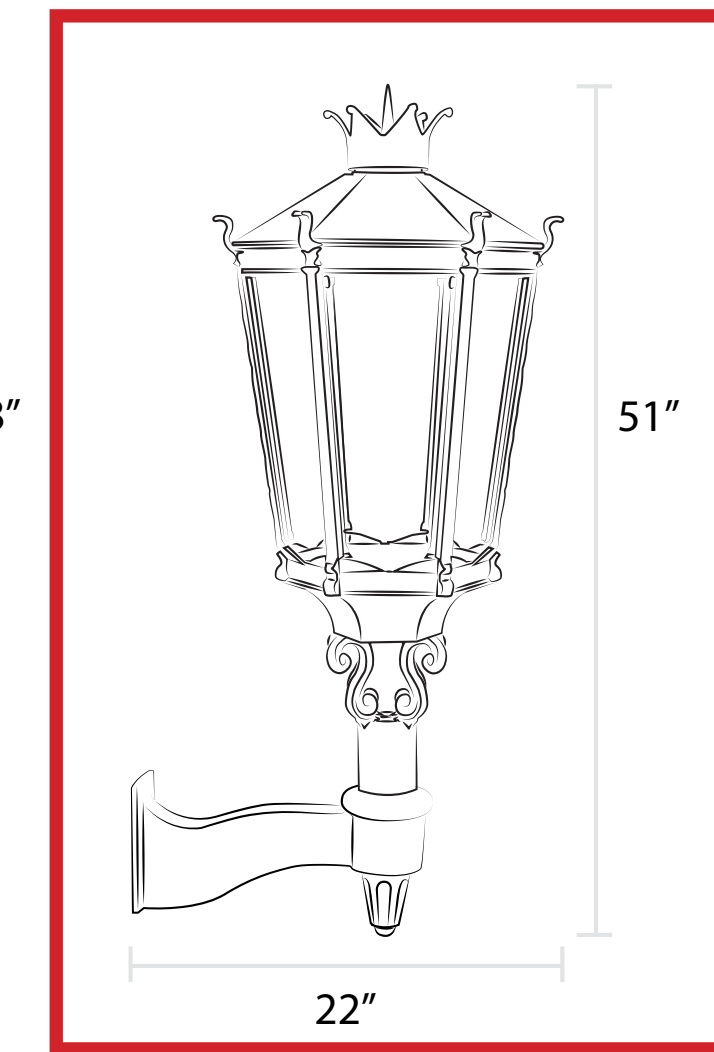
44"

22"



38"

22"



51"

22"

Product Overview:

- Sand cast aluminum
- CSA approved valve
- Flat tempered glass included; additional glass options available*
- Crown with Spike finial included; decorative finials available*

Installation Options:

- Post mount fits standard 3" outside diameter post
- For wall mount, combine with our Universal Bracket
- For pier mount, combine with our Large Six-Sided Pier Mount or Large Six-Sided Pier Mount with 3" outside diameter stud

Illumination Options:



Finish Options:

- Available in all finish options

*Additional charges may apply



AMERICANGASLAMP.COM

Volita



cocina & tequila bar

WALL MOUNTED GAS LANTERN CUT SHEET

Bergmeyer

03-23-2017