

Existing condition

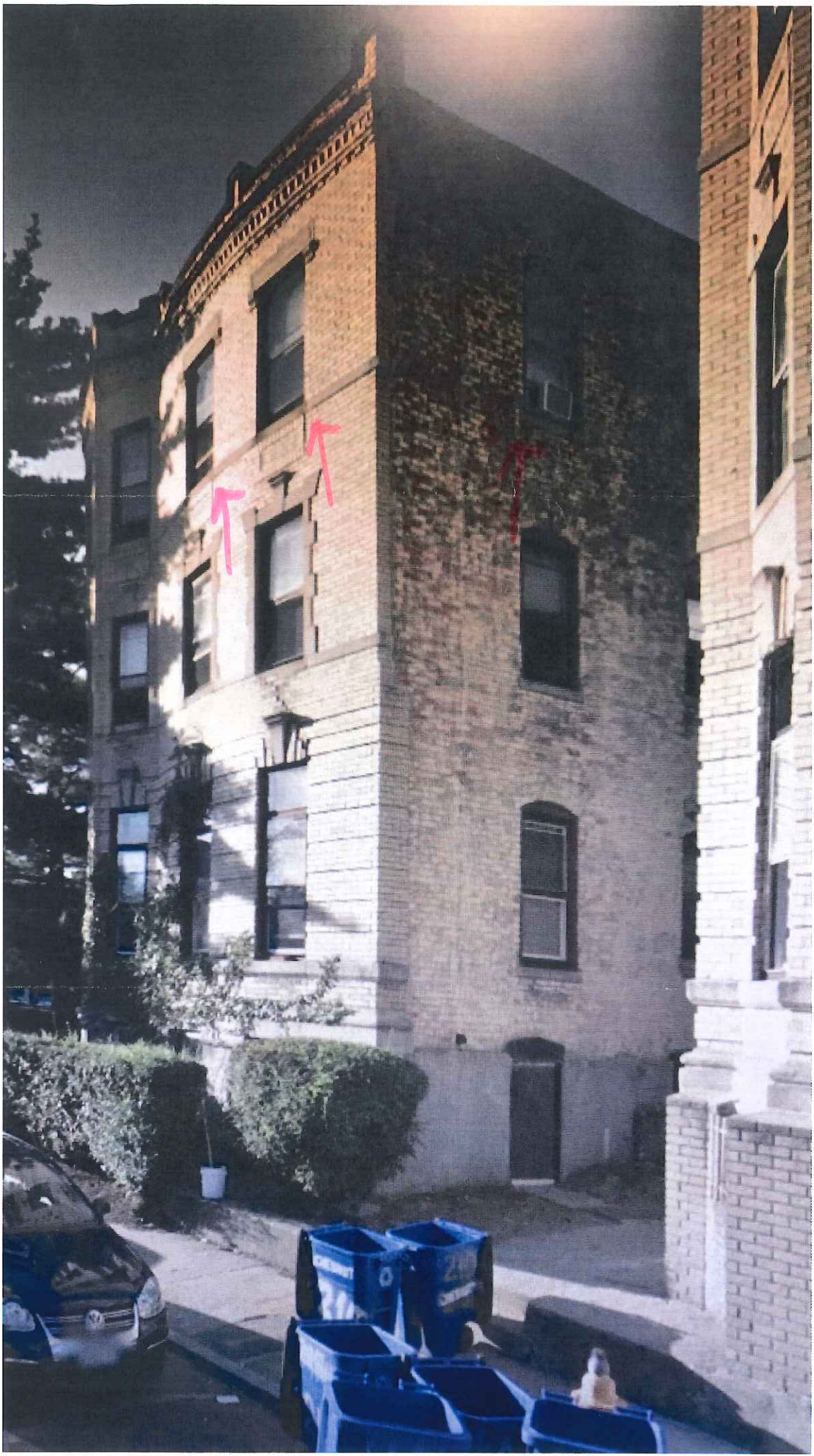
210 Chestnut Hill Ave.
Unit #5, Brighton, MA,
02135
11/17/2016



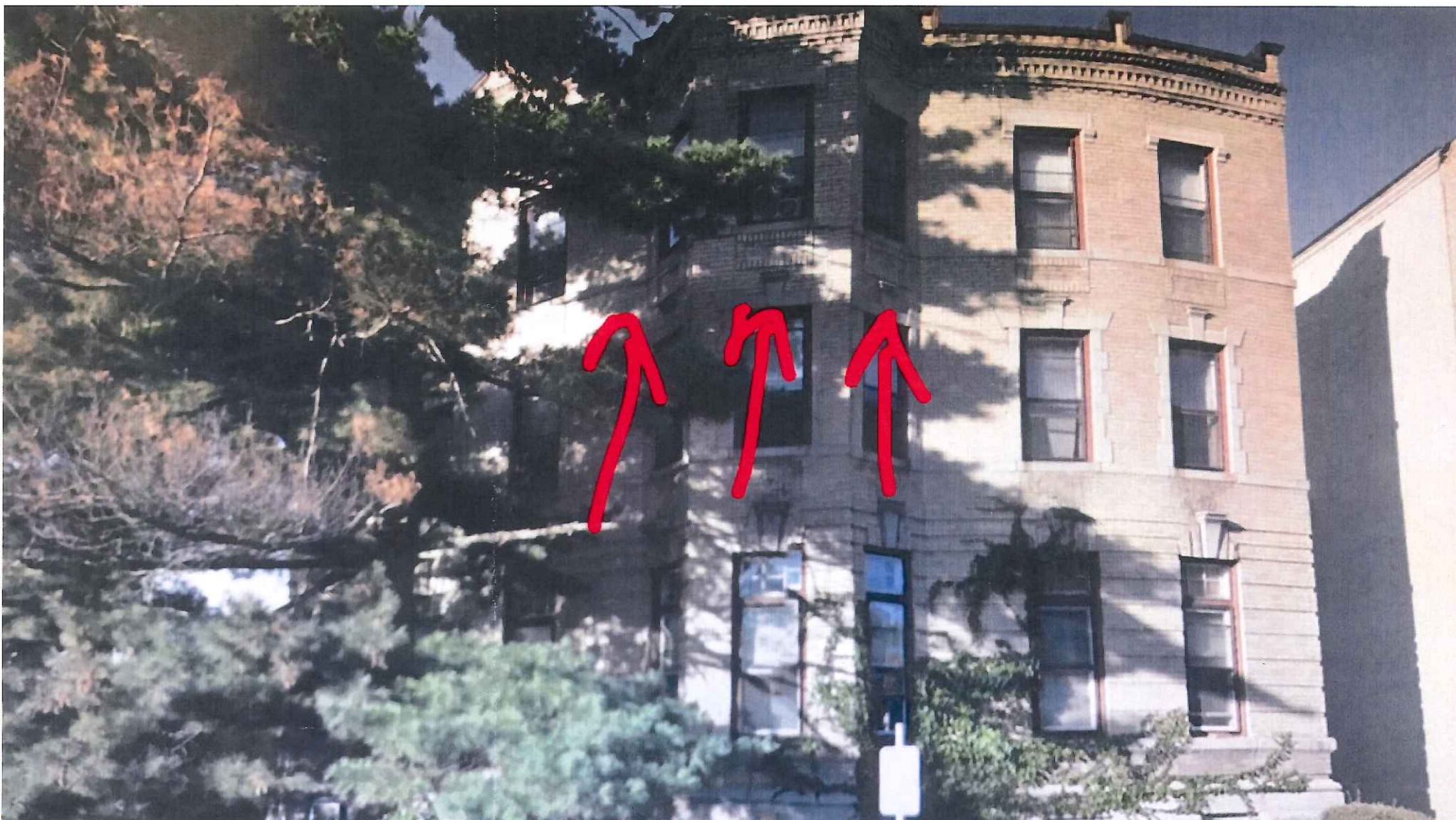


210 Chestnut Hill Ave,
Unit #5, Brighton, MA,
02135.
11/17/2016

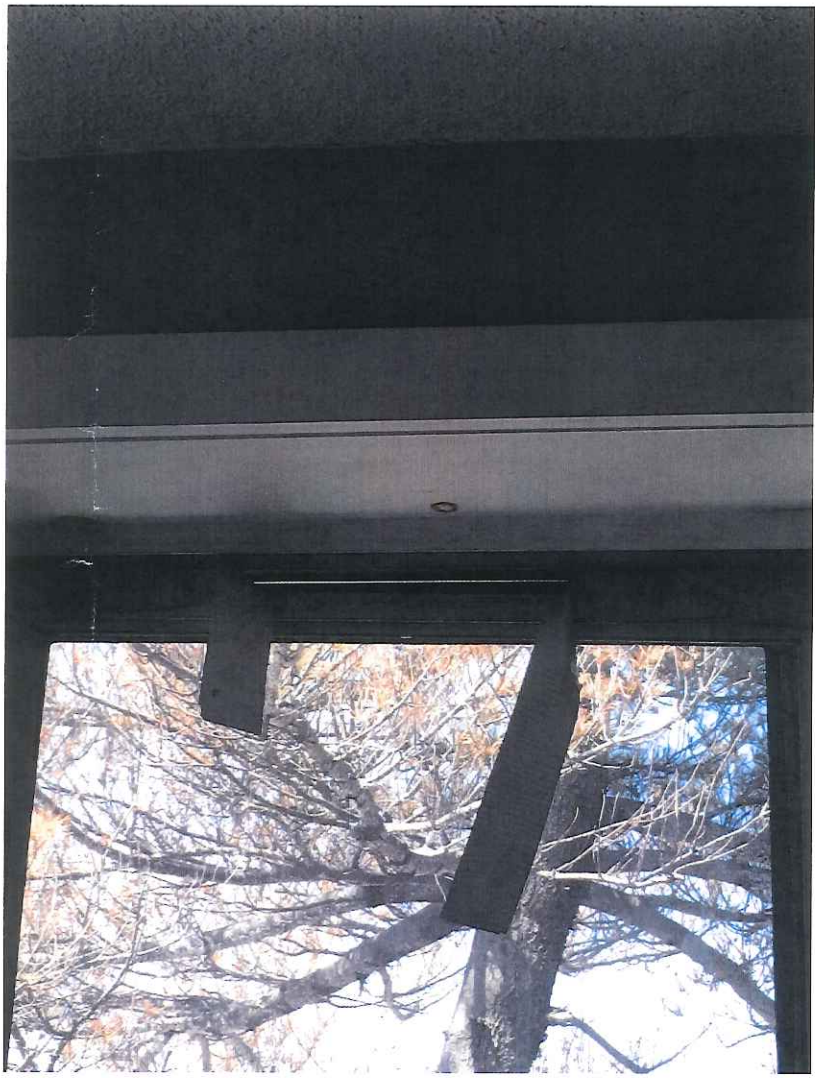
210 Chestnut Hill Ave,
Unit # 5, Brighton, MA,
02135
11/17/2016



210 Chestnut Hill Ave.
Unit # 5, Brighton,
MA, 02135
11/17/2016



210 Chestnut Hill Ave,
Unit # 5, Brighton,
MA, 02135
11/17/2016

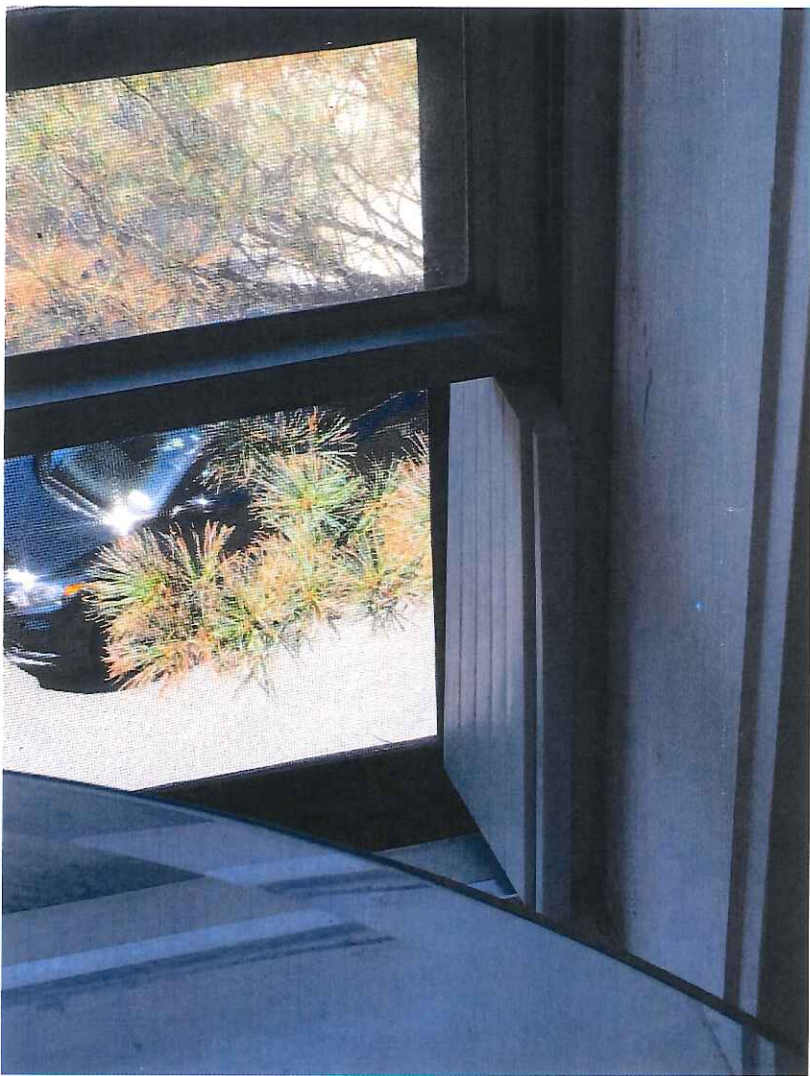


← Improper insulation

Existing Condition

210 Chestnut Hill Ave.
Unit #5, Brighton,
MA, 02135
11/17/2016





← prop needed

210 Chestnut Hill Ave,
Unit #5, Brighton,
MA, 02135
11/17/2016

210 Chestnut Hill Ave,
Unit #5, Brighton,
MA, 02135
11/17/2016

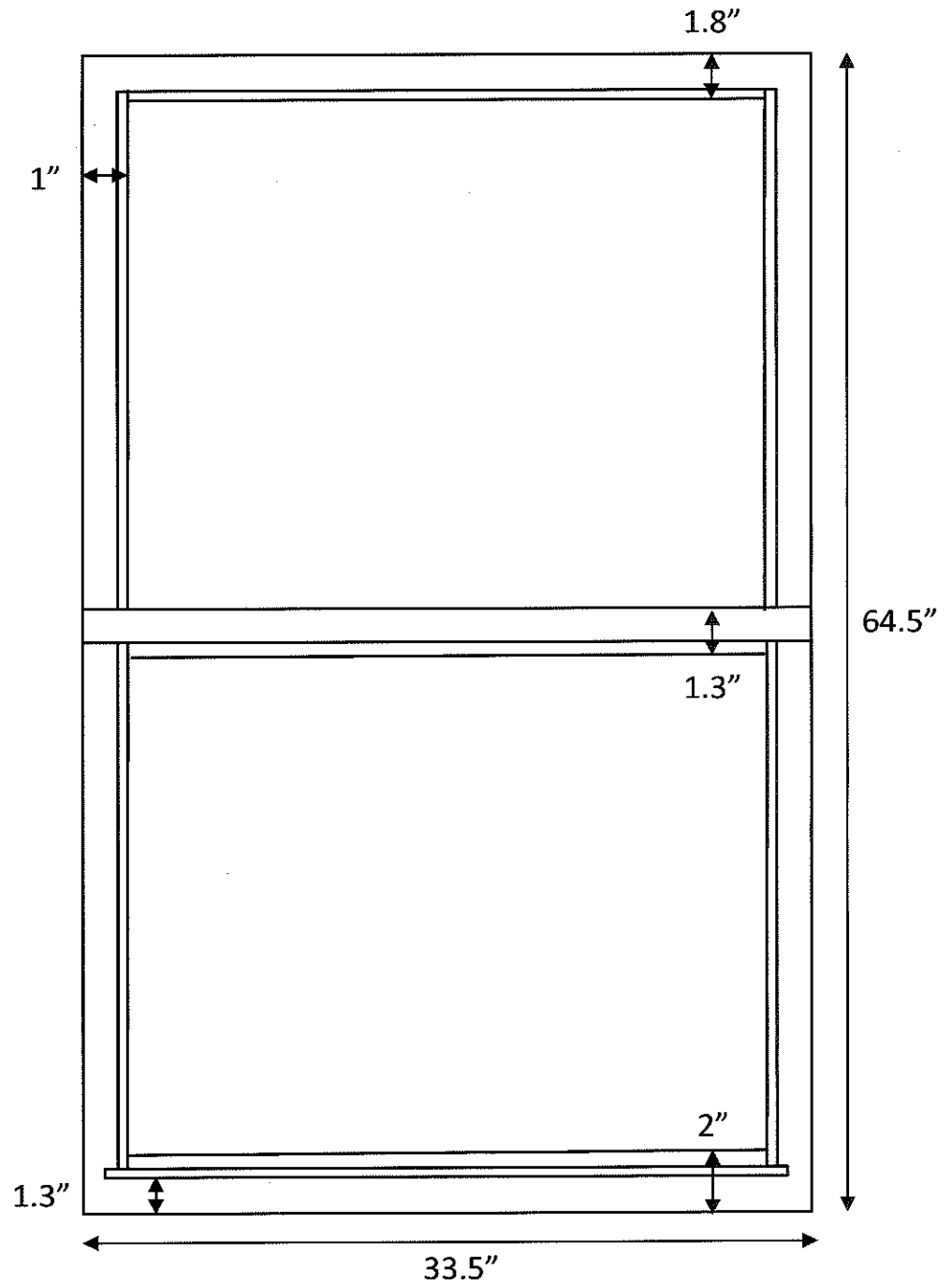


Misalignment ←

**Existing condition:
Non-Kitchen x 6**

210 Chestnut Hill Ave, Apt 5,
Brighton, MA, 02135

2017/1/11



210 Chestnut Hill Ave, Apt 5,
Brighton, MA, 02135

2017/1/11

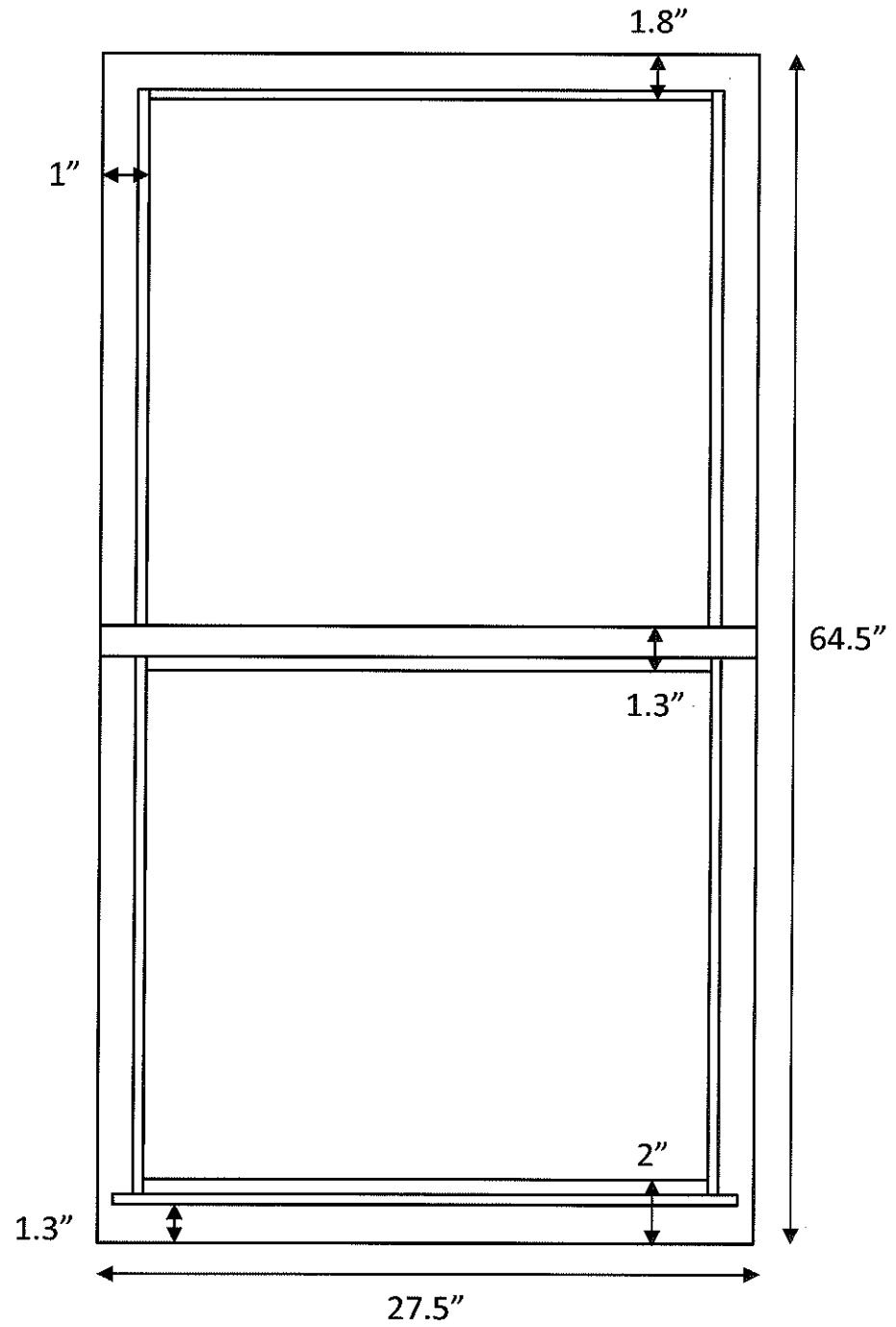
Existing condition:
Non-Kitchen x 6



**Existing condition:
Kitchen x 2**

210 Chestnut Hill Ave, Apt 5,
Brighton, MA, 02135

2017/1/11



210 Chestnut Hill Ave, Apt 5,
Brighton, MA, 02135

2017/1/11

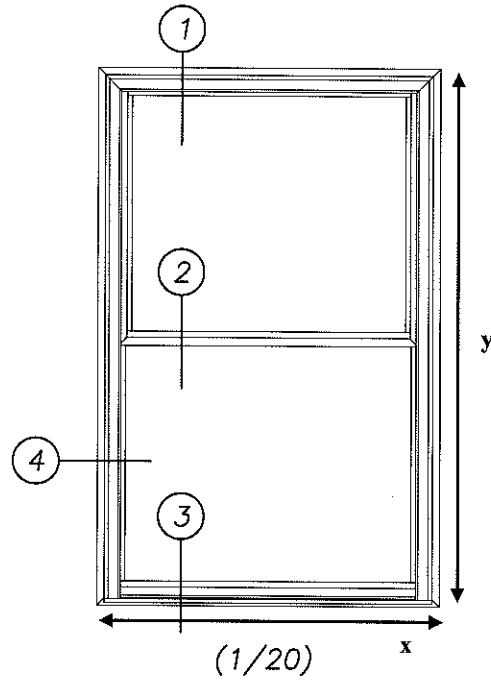
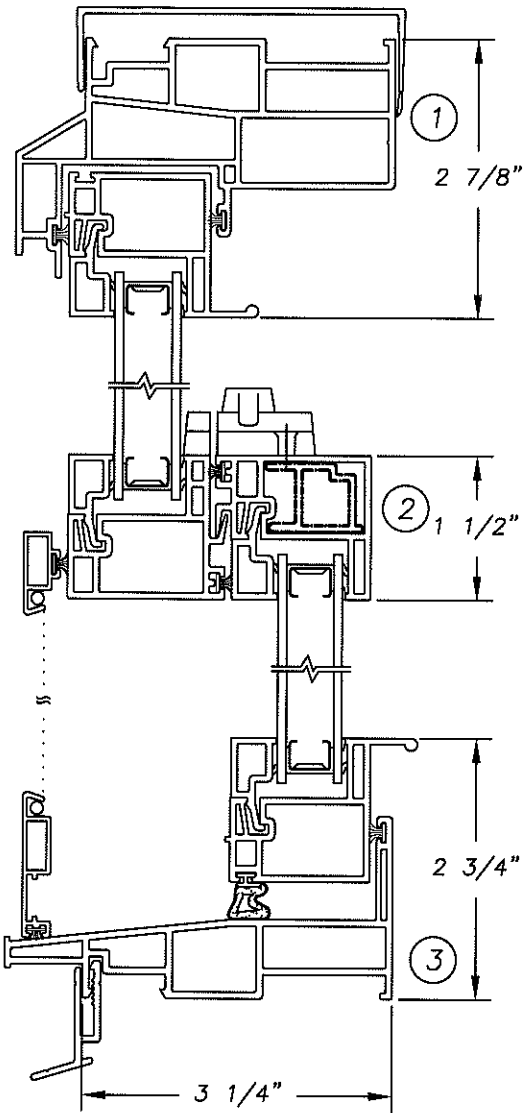
Existing condition:
Kitchen x 2



Replacement windows
Color: interior - white, exterior - universal brown

**210 Chestnut Hill Ave, Apt 5,
 Brighton, MA, 02135**

2017/1/11



y = 64.5"
x = 33.5" (non-kitchen windows)
x = 27.5" (kitchen windows)

